

Data Path : Z:\pestpcbsrv\HPCHEM1\ECD_P\Data\PP061523\
 Data File : PP058499.D
 Signal(s) : Signal #1: ECD1A.ch Signal #2: ECD2B.ch
 Acq On : 16 Jun 2023 03:22
 Operator : YP\AJ
 Sample : AR1268ICC750
 Misc :
 ALS Vial : 27 Sample Multiplier: 1

Instrument :
 ECD_P
ClientSampleId :
 AR1268ICC750

Integration File signal 1: autoint1.e
 Integration File signal 2: autoint2.e
 Quant Time: Jun 16 05:38:14 2023
 Quant Method : Z:\pestpcbsrv\HPCHEM1\ECD_P\methods\PP061523.M
 Quant Title : GC EXTRACTABLES
 QLast Update : Fri Jun 16 05:28:13 2023
 Response via : Initial Calibration
 Integrator: ChemStation

Volume Inj. : 2 µl
 Signal #1 Phase : ZB-MR1 Signal #2 Phase: ZB-MR2
 Signal #1 Info : 30Mx0.32mmx 0.50µ Signal #2 Info : 30M x 0.32mm x 0.25µm

Compound	RT#1	RT#2	Resp#1	Resp#2	ng/ml	ng/ml

System Monitoring Compounds						
1) SA Tetrachlo...	4.458	3.770	176.8E6	120.5E6	74.615	74.137
2) SA Decachlor...	10.357	8.871	183.2E6	181.8E6	73.136	72.687
Target Compounds						
41) L9 AR-1268-1	8.775	7.719	154.1E6	165.3E6	738.949	732.143
42) L9 AR-1268-2	8.872	7.783	137.0E6	156.8E6	740.564	740.117
43) L9 AR-1268-3	9.113	7.996	127.3E6	131.2E6	744.406	727.577
44) L9 AR-1268-4	9.559	8.289	47557325	51939185	735.715	721.250
45) L9 AR-1268-5	9.997	8.597	388.8E6	402.3E6	734.063	733.895

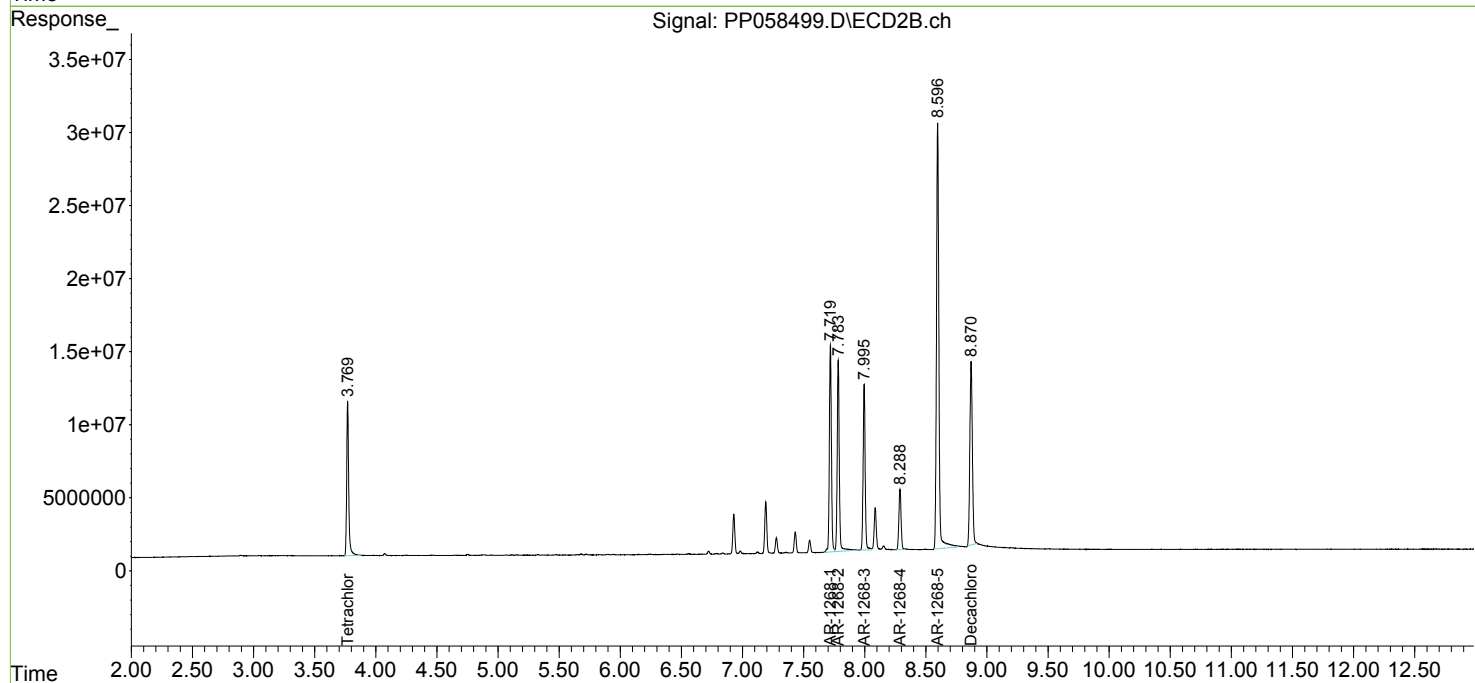
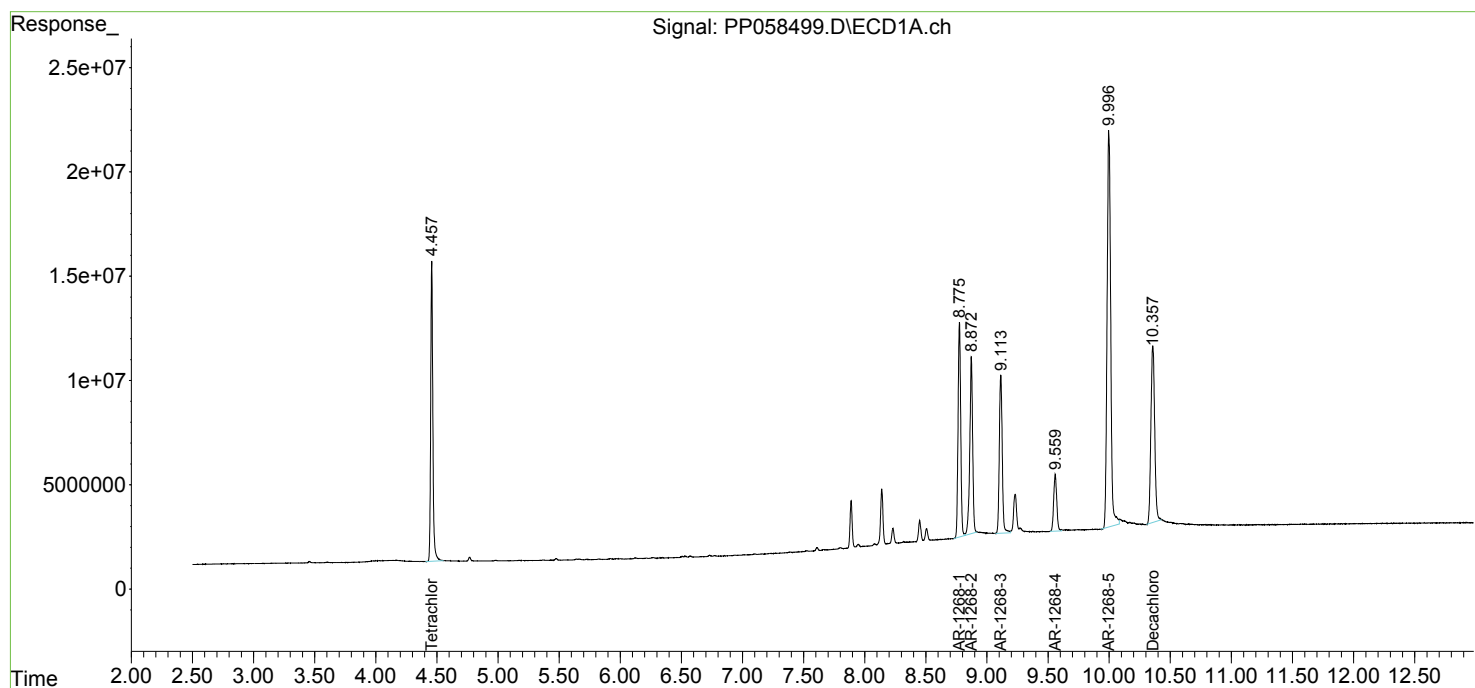
(f)=RT Delta > 1/2 Window (#)=Amounts differ by > 25% (m)=manual int.

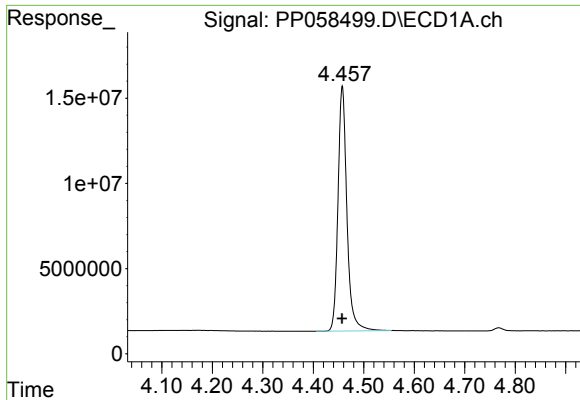
Data Path : Z:\pestpcbsrv\HPCHEM1\ECD_P\Data\PP061523\
 Data File : PP058499.D
 Signal(s) : Signal #1: ECD1A.ch Signal #2: ECD2B.ch
 Acq On : 16 Jun 2023 03:22
 Operator : YP\AJ
 Sample : AR1268ICC750
 Misc :
 ALS Vial : 27 Sample Multiplier: 1

Instrument :
 ECD_P
 ClientSampleId :
 AR1268ICC750

Integration File signal 1: autoint1.e
 Integration File signal 2: autoint2.e
 Quant Time: Jun 16 05:38:14 2023
 Quant Method : Z:\pestpcbsrv\HPCHEM1\ECD_P\methods\PP061523.M
 Quant Title : GC EXTRACTABLES
 QLast Update : Fri Jun 16 05:28:13 2023
 Response via : Initial Calibration
 Integrator: ChemStation

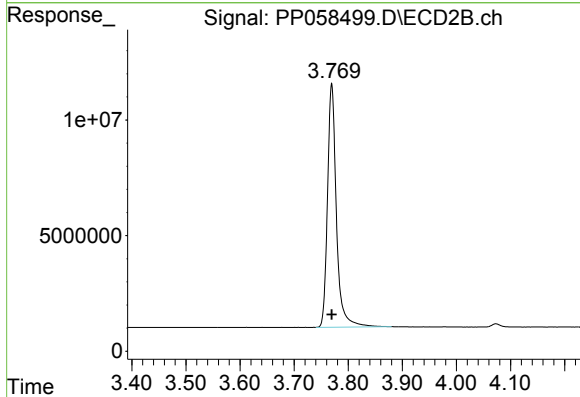
Volume Inj. : 2 µl
 Signal #1 Phase : ZB-MR1 Signal #2 Phase: ZB-MR2
 Signal #1 Info : 30Mx0.32mmx 0.50µ Signal #2 Info : 30M x 0.32mm x 0.25µm



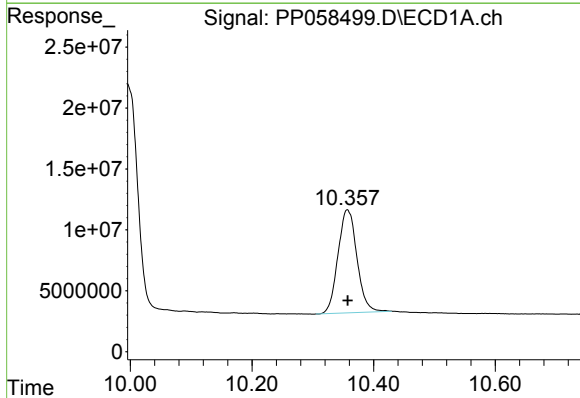


#1 Tetrachloro-m-xylene
 R.T.: 4.458 min
 Delta R.T.: 0.000 min
 Response: 176807062
 Conc: 74.61 ng/ml

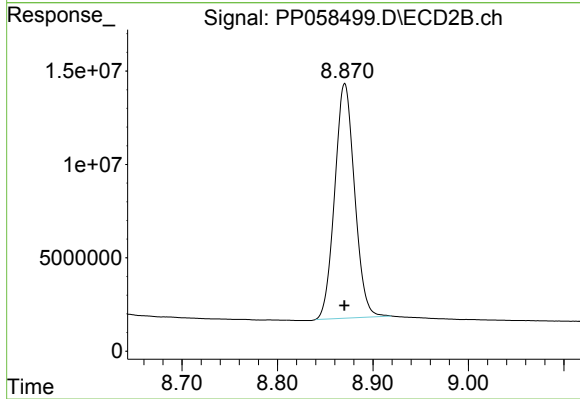
Instrument :
 ECD_P
 ClientSampleId :
 AR1268ICC750



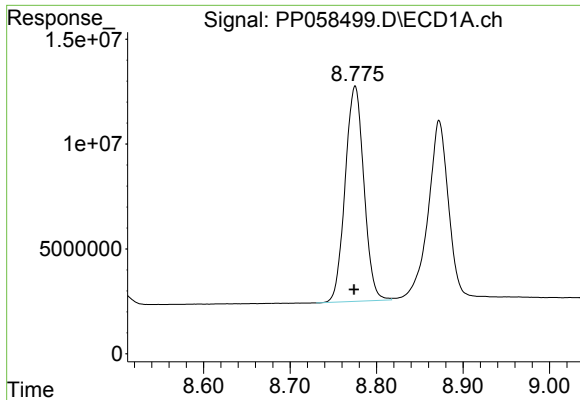
#1 Tetrachloro-m-xylene
 R.T.: 3.770 min
 Delta R.T.: 0.000 min
 Response: 120464381
 Conc: 74.14 ng/ml



#2 Decachlorobiphenyl
 R.T.: 10.357 min
 Delta R.T.: 0.000 min
 Response: 183235741
 Conc: 73.14 ng/ml



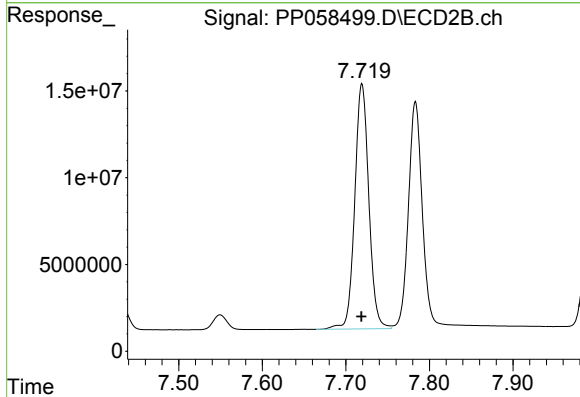
#2 Decachlorobiphenyl
 R.T.: 8.871 min
 Delta R.T.: 0.000 min
 Response: 181826644
 Conc: 72.69 ng/ml



#41 AR-1268-1

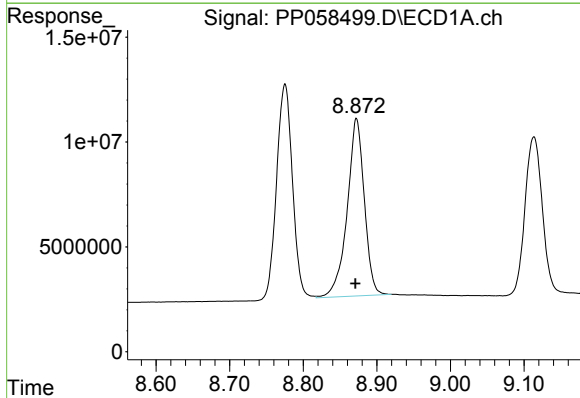
R.T.: 8.775 min
 Delta R.T.: 0.001 min
 Response: 154104939
 Conc: 738.95 ng/ml

Instrument :
 ECD_P
 ClientSampleId :
 AR1268ICC750



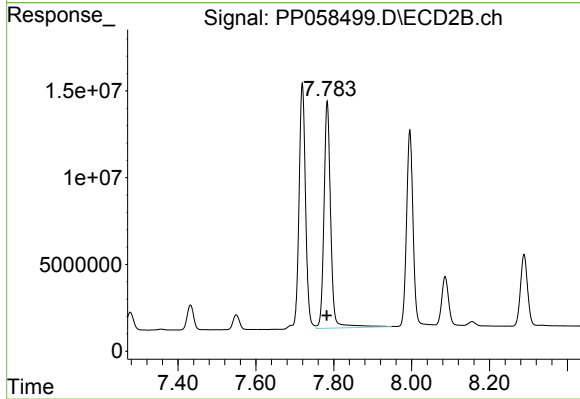
#41 AR-1268-1

R.T.: 7.719 min
 Delta R.T.: 0.000 min
 Response: 165324958
 Conc: 732.14 ng/ml



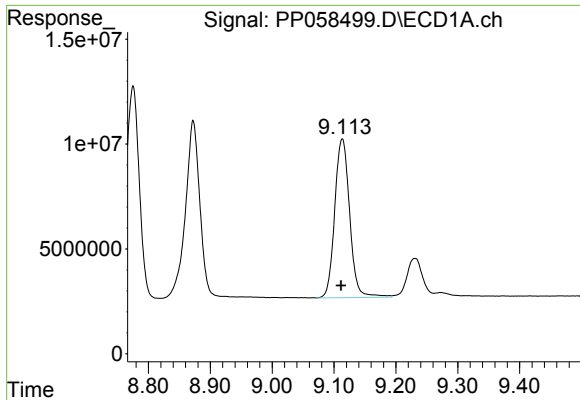
#42 AR-1268-2

R.T.: 8.872 min
 Delta R.T.: 0.001 min
 Response: 137005245
 Conc: 740.56 ng/ml



#42 AR-1268-2

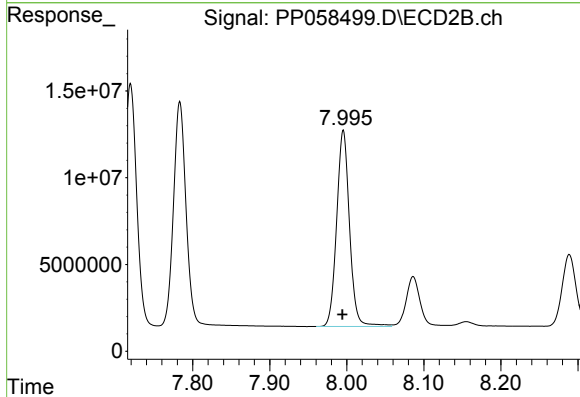
R.T.: 7.783 min
 Delta R.T.: 0.000 min
 Response: 156751069
 Conc: 740.12 ng/ml



#43 AR-1268-3

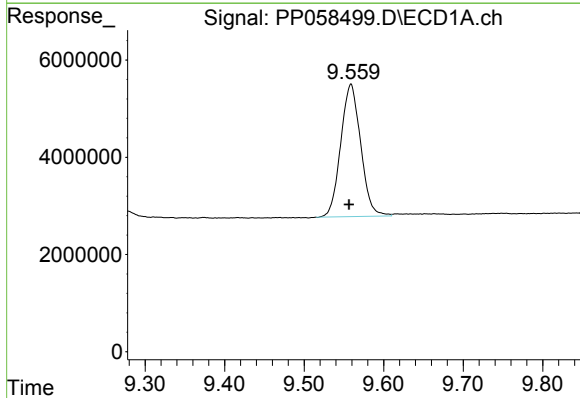
R.T.: 9.113 min
 Delta R.T.: 0.002 min
 Response: 127278499
 Conc: 744.41 ng/ml

Instrument :
 ECD_P
 ClientSampleId :
 AR1268ICC750



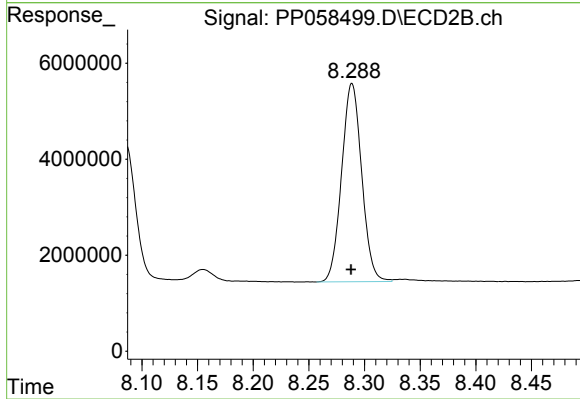
#43 AR-1268-3

R.T.: 7.996 min
 Delta R.T.: 0.001 min
 Response: 131230983
 Conc: 727.58 ng/ml



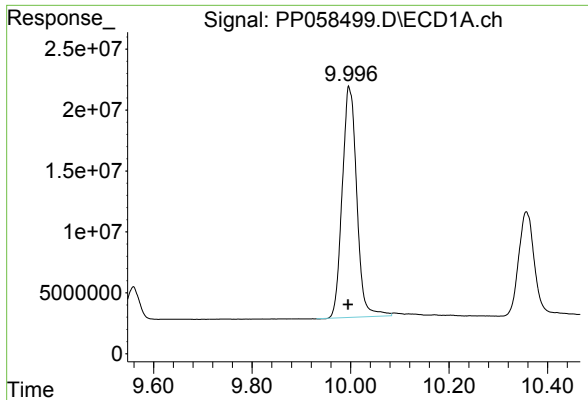
#44 AR-1268-4

R.T.: 9.559 min
 Delta R.T.: 0.003 min
 Response: 47557325
 Conc: 735.72 ng/ml



#44 AR-1268-4

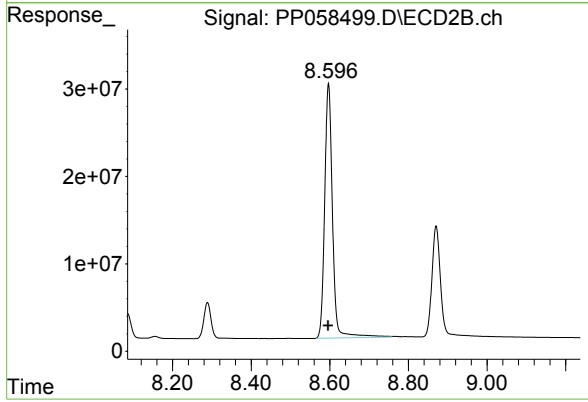
R.T.: 8.289 min
 Delta R.T.: 0.000 min
 Response: 51939185
 Conc: 721.25 ng/ml



#45 AR-1268-5

R.T.: 9.997 min
Delta R.T.: 0.002 min
Response: 388820911
Conc: 734.06 ng/ml

Instrument :
ECD_P
ClientSampleId :
AR1268ICC750



#45 AR-1268-5

R.T.: 8.597 min
Delta R.T.: 0.000 min
Response: 402345385
Conc: 733.90 ng/ml