

Data Path : Z:\pestpcbsrv\HPCHEM1\ECD_P\Data\PP061721\
 Data File : PP036540.D
 Signal(s) : Signal #1: ECD1A.CH Signal #2: ECD2B.CH
 Acq On : 18 Jun 2021 5:11
 Operator : DD\AJ
 Sample : AR1232ICV500
 Misc :
 ALS Vial : 45 Sample Multiplier: 1

Instrument :
 ECD_P
 ClientSampleId :
 ICVPP061721AR1232

Integration File signal 1: autoint1.e
 Integration File signal 2: autoint2.e
 Quant Time: Jun 18 06:09:51 2021
 Quant Method : Z:\pestpcbsrv\HPCHEM1\ECD_P\methods\PP061721.M
 Quant Title : GC EXTRACTABLES
 QLast Update : Fri Jun 18 06:06:19 2021
 Response via : Initial Calibration
 Integrator: ChemStation 6890 Scale Mode: Small noise peaks clipped

Volume Inj. : 2 µl
 Signal #1 Phase : ZB-MR1 Signal #2 Phase: ZB-MR2
 Signal #1 Info : 30Mx0.32mmx 0.50µ Signal #2 Info : 30M x 0.32mm x 0.25µm

Compound	RT#1	RT#2	Resp#1	Resp#2	ng/ml	ng/ml

System Monitoring Compounds						
1) SA Tetrachlo...	4.964	3.958	2103382	1484703	47.589	47.935
2) SA Decachlor...	10.995	9.261	2111519	1530095	49.223	47.845
Target Compounds						
3) L1 AR-1016-1	6.284	5.212	370905	247233	218.972	209.722
4) L1 AR-1016-2	6.308	5.233	515466	343947	213.776	211.772
5) L1 AR-1016-3	6.374	5.422	338060	187167	219.912	207.452
6) L1 AR-1016-4	6.481	5.476	270811	132167	210.659	186.181
7) L1 AR-1016-5	6.796	5.703	263576	183630	206.071	202.631
8) L2 AR-1221-1	5.213	4.216	155132	110884	276.324	284.937
9) L2 AR-1221-2	5.313	4.314	146467	101875	339.885	341.308
10) L2 AR-1221-3	5.400	4.402	480781	335966	372.924	372.043
11) L3 AR-1232-1	5.400	4.402	480781	335966	451.405	456.683
12) L3 AR-1232-2	5.989	5.233	281599	343947	512.020	514.374
13) L3 AR-1232-3	6.308	5.422	515466	187167	504.588	515.931
14) L3 AR-1232-4	6.481	5.520	270811	161116	501.706	514.513
15) L3 AR-1232-5	6.579	5.703	192075	183630	524.077	515.534
16) L4 AR-1242-1	6.284	5.212	370905	247233	289.240	277.761
17) L4 AR-1242-2	6.308	5.233	515466	343947	282.475	281.968
18) L4 AR-1242-3	6.374	5.422	338060	187167	288.162	278.157
19) L4 AR-1242-4	6.481	5.520	270811	161116	279.831	248.855
20) L4 AR-1242-5	7.263	6.083	266471	202057	253.329	247.648
21) L5 AR-1248-1	6.284	5.212	370905	247233	367.661	354.828
22) L5 AR-1248-2	6.579	5.476	192075	132167	141.434	139.537
23) L5 AR-1248-3	6.796	5.520	263576	161116	161.994	162.836
24) L5 AR-1248-4	7.224	5.703	255397	183630	139.886	156.985
25) L5 AR-1248-5	7.263	6.127	266471	178454	147.790	150.446
26) L6 AR-1254-1	7.193	6.083	183418	202057	104.294	119.252
27) L6 AR-1254-2	7.429	6.244	219416	43501	81.094	29.246 #
28) L6 AR-1254-3	7.805	6.664	79226	58040	26.747	23.873
29) L6 AR-1254-4	8.100	6.904	44818	31291	20.387	20.221
30) L6 AR-1254-5	0.000	7.334	0	12813	N.D.	5.959 #
31) L7 AR-1260-1	0.000	6.808	0	26607	N.D.	16.526 #
32) L7 AR-1260-2	0.000	7.000	0	10638	N.D.	5.486 #
33) L7 AR-1260-3	0.000	7.154	0	15510	N.D.	8.528 #
35) L7 AR-1260-5	9.161	7.887	21316	17929	4.777	4.879
36) L8 AR-1262-1	0.000	7.334	0	12813	N.D.	10.750 #
37) L8 AR-1262-2	9.161	7.887	21316	17929	4.195	4.574
39) L8 AR-1262-4	0.000	8.236	0	11257	N.D.	3.782 #
42) L9 AR-1268-2	0.000	8.236	0	11257	N.D.	2.610 #
45) L9 AR-1268-5	0.000	9.018	0	37113	N.D.	3.139 #

Data Path : Z:\pestpcbsrv\HPCHEM1\ECD_P\Data\PP061721\
Data File : PP036540.D
Signal(s) : Signal #1: ECD1A.CH Signal #2: ECD2B.CH
Acq On : 18 Jun 2021 5:11
Operator : DD\AJ
Sample : AR1232ICV500
Misc :
ALS Vial : 45 Sample Multiplier: 1

Instrument :
ECD_P
ClientSampleId :
ICVPP061721AR1232

Integration File signal 1: autoint1.e
Integration File signal 2: autoint2.e
Quant Time: Jun 18 06:09:51 2021
Quant Method : Z:\pestpcbsrv\HPCHEM1\ECD_P\methods\PP061721.M
Quant Title : GC EXTRACTABLES
QLast Update : Fri Jun 18 06:06:19 2021
Response via : Initial Calibration
Integrator: ChemStation 6890 Scale Mode: Small noise peaks clipped

Volume Inj. : 2 µl
Signal #1 Phase : ZB-MR1 Signal #2 Phase: ZB-MR2
Signal #1 Info : 30Mx0.32mmx 0.50µ Signal #2 Info : 30M x 0.32mm x 0.25µm

Compound	RT#1	RT#2	Resp#1	Resp#2	ng/ml	ng/ml
----------	------	------	--------	--------	-------	-------

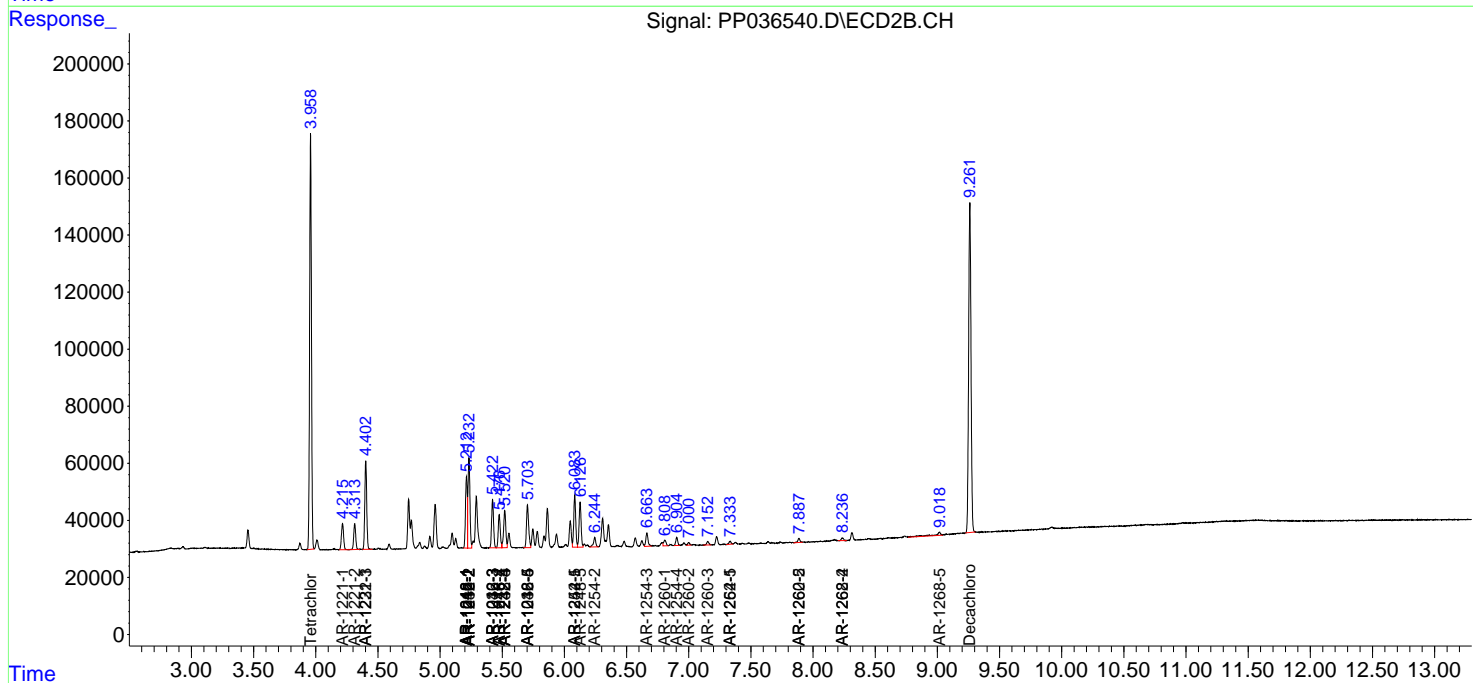
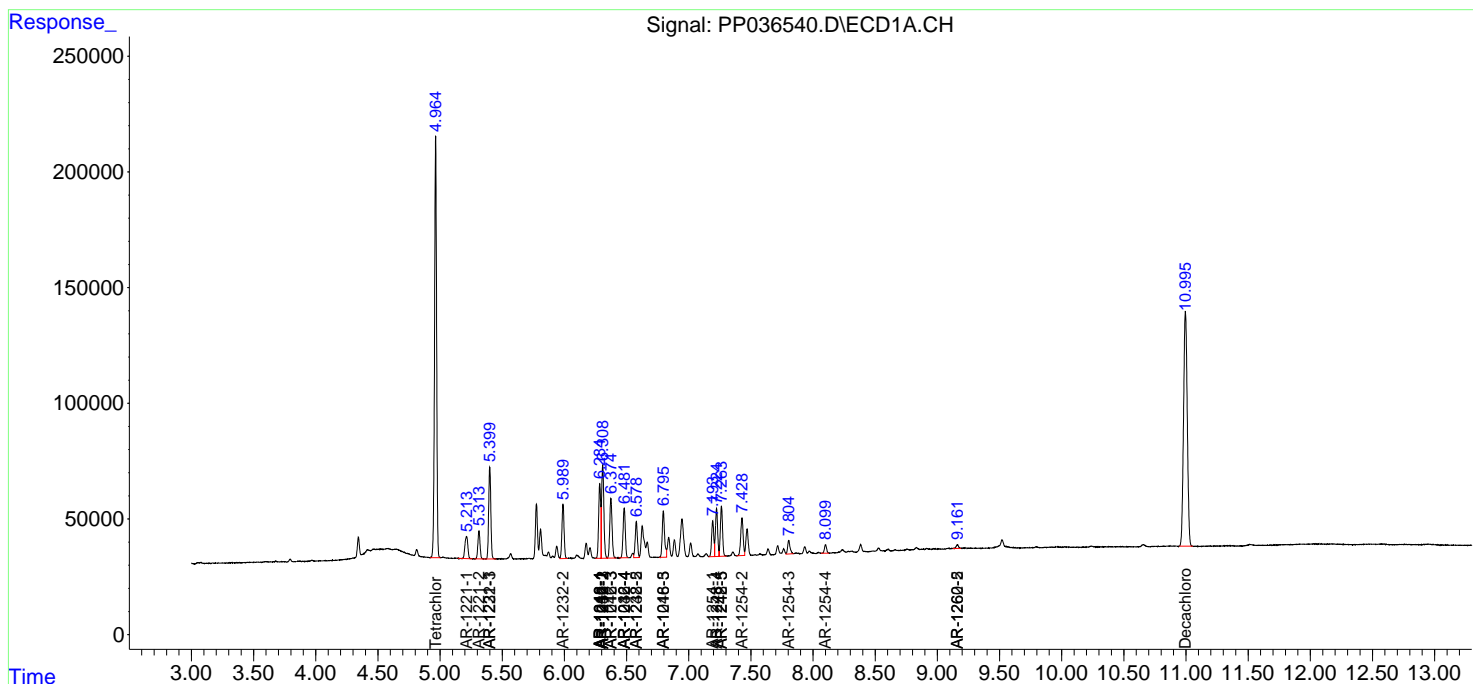
(f)=RT Delta > 1/2 Window (#)=Amounts differ by > 25% (m)=manual int.

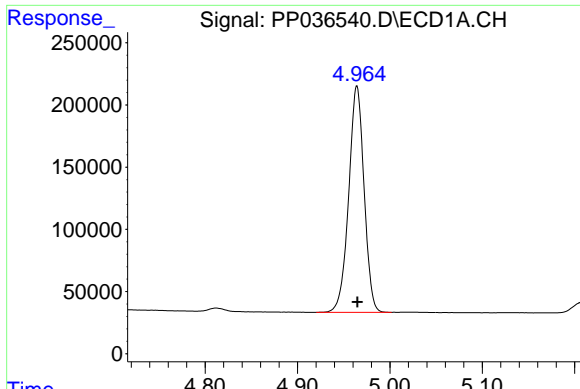
Data Path : Z:\pestpcbsrv\HPCHEM1\ECD_P\Data\PP061721\
 Data File : PP036540.D
 Signal(s) : Signal #1: ECD1A.CH Signal #2: ECD2B.CH
 Acq On : 18 Jun 2021 5:11
 Operator : DD\AJ
 Sample : AR1232ICV500
 Misc :
 ALS Vial : 45 Sample Multiplier: 1

Instrument :
 ECD_P
 ClientSampleId :
 ICVPP061721AR1232

Integration File signal 1: autoint1.e
 Integration File signal 2: autoint2.e
 Quant Time: Jun 18 06:09:51 2021
 Quant Method : Z:\pestpcbsrv\HPCHEM1\ECD_P\methods\PP061721.M
 Quant Title : GC EXTRACTABLES
 QLast Update : Fri Jun 18 06:06:19 2021
 Response via : Initial Calibration
 Integrator: ChemStation 6890 Scale Mode: Small noise peaks clipped

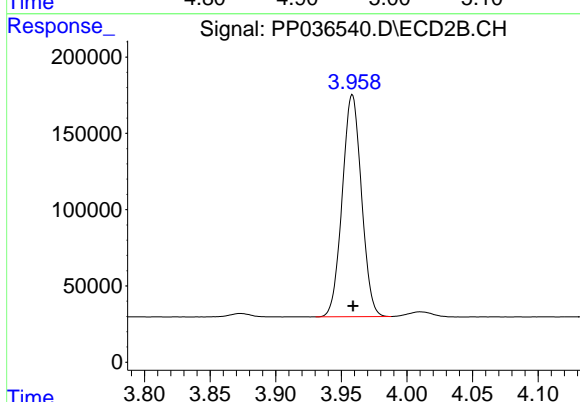
Volume Inj. : 2 µl
 Signal #1 Phase : ZB-MR1 Signal #2 Phase: ZB-MR2
 Signal #1 Info : 30Mx0.32mmx 0.50µ Signal #2 Info : 30M x 0.32mm x 0.25µm



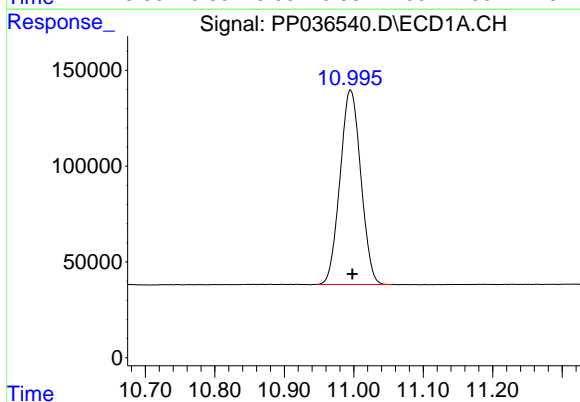


#1 Tetrachloro-m-xylene
 R.T.: 4.964 min
 Delta R.T.: 0.000 min
 Response: 2103382
 Conc: 47.59 ng/ml

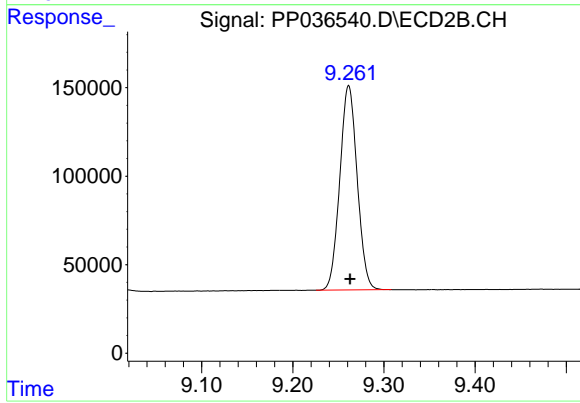
Instrument :
 ECD_P
 ClientSampleId :
 ICVPP061721AR1232



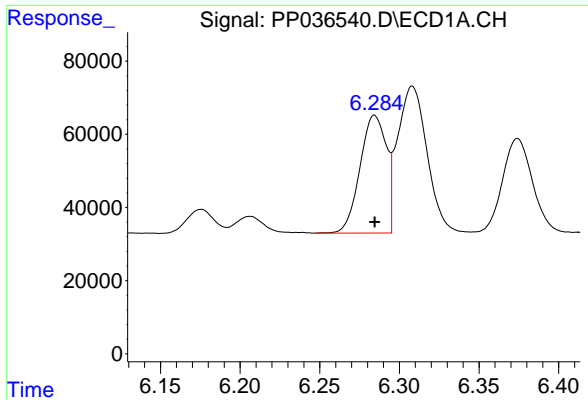
#1 Tetrachloro-m-xylene
 R.T.: 3.958 min
 Delta R.T.: 0.000 min
 Response: 1484703
 Conc: 47.93 ng/ml



#2 Decachlorobiphenyl
 R.T.: 10.995 min
 Delta R.T.: -0.003 min
 Response: 2111519
 Conc: 49.22 ng/ml



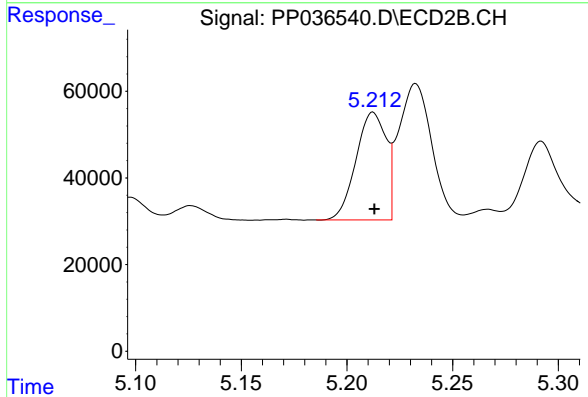
#2 Decachlorobiphenyl
 R.T.: 9.261 min
 Delta R.T.: -0.002 min
 Response: 1530095
 Conc: 47.84 ng/ml



#3 AR-1016-1

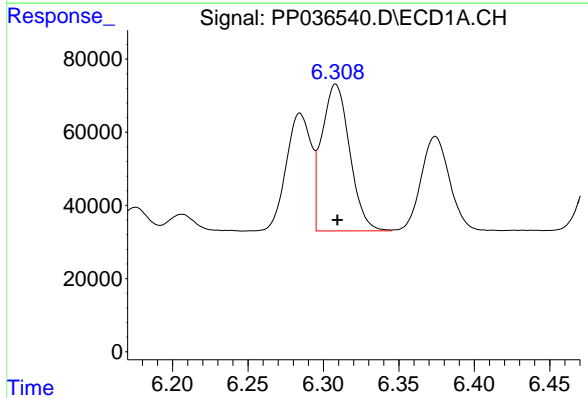
R.T.: 6.284 min
 Delta R.T.: 0.000 min
 Response: 370905
 Conc: 218.97 ng/ml

Instrument :
 ECD_P
 ClientSampleId :
 ICVPP061721AR1232



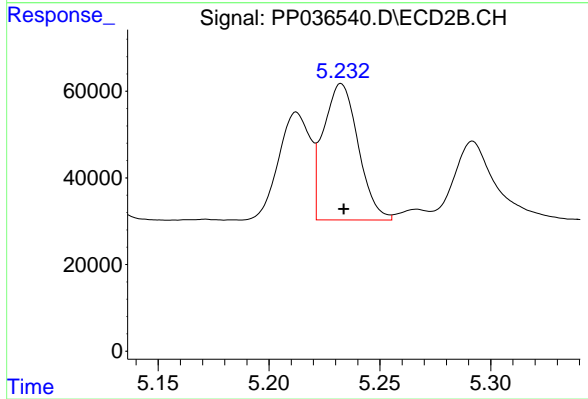
#3 AR-1016-1

R.T.: 5.212 min
 Delta R.T.: 0.000 min
 Response: 247233
 Conc: 209.72 ng/ml



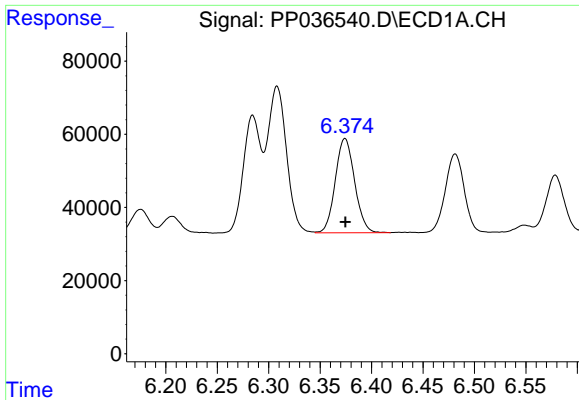
#4 AR-1016-2

R.T.: 6.308 min
 Delta R.T.: -0.001 min
 Response: 515466
 Conc: 213.78 ng/ml



#4 AR-1016-2

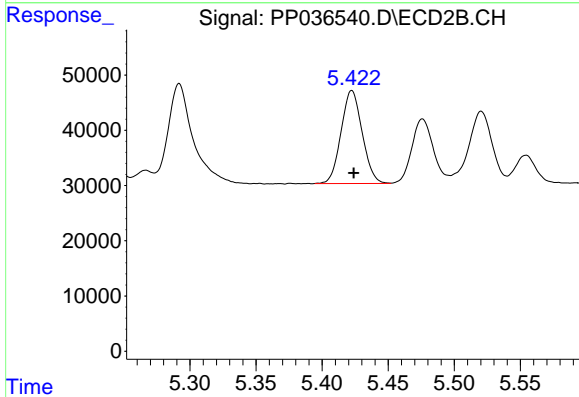
R.T.: 5.233 min
 Delta R.T.: -0.001 min
 Response: 343947
 Conc: 211.77 ng/ml



#5 AR-1016-3

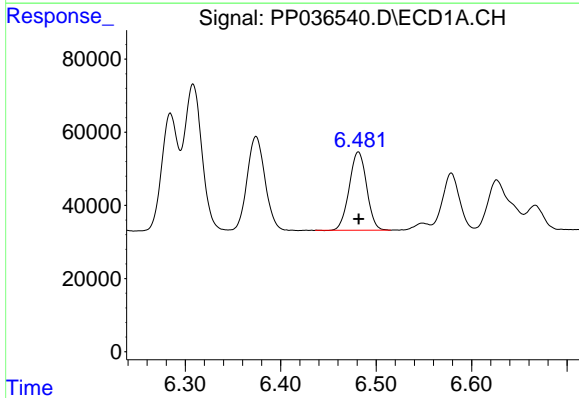
R.T.: 6.374 min
 Delta R.T.: 0.000 min
 Response: 338060
 Conc: 219.91 ng/ml

Instrument :
 ECD_P
 ClientSampleId :
 ICVPP061721AR1232



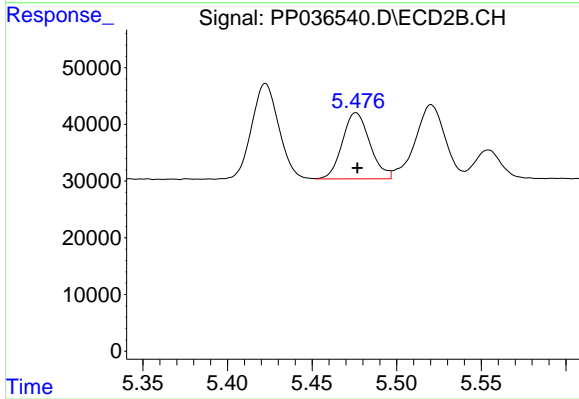
#5 AR-1016-3

R.T.: 5.422 min
 Delta R.T.: -0.002 min
 Response: 187167
 Conc: 207.45 ng/ml



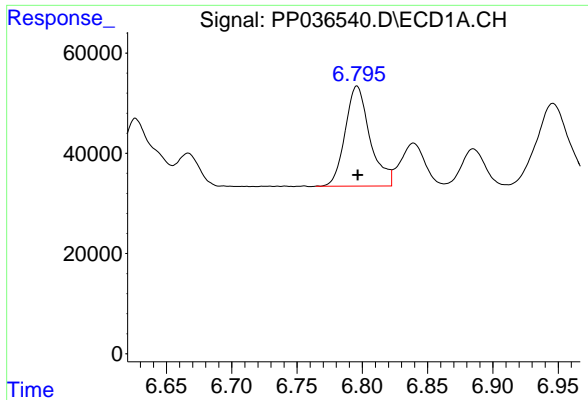
#6 AR-1016-4

R.T.: 6.481 min
 Delta R.T.: 0.000 min
 Response: 270811
 Conc: 210.66 ng/ml



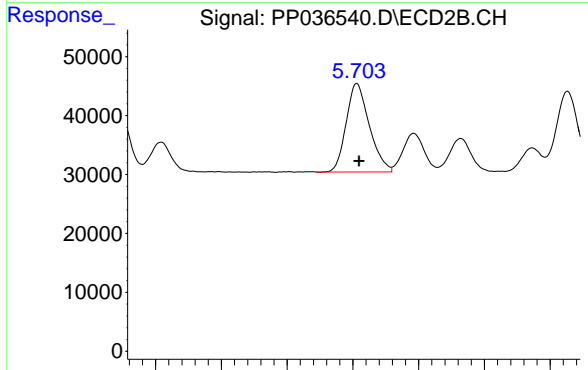
#6 AR-1016-4

R.T.: 5.476 min
 Delta R.T.: 0.000 min
 Response: 132167
 Conc: 186.18 ng/ml

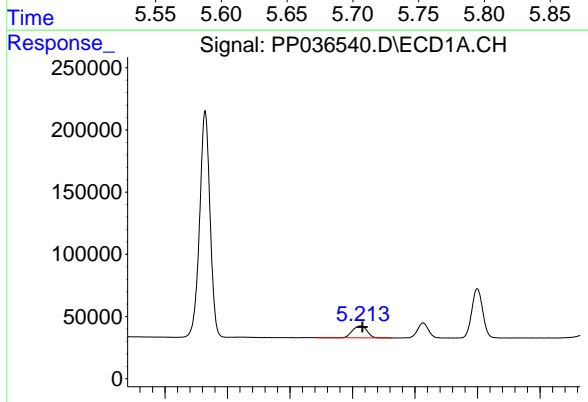


#7 AR-1016-5
 R.T.: 6.796 min
 Delta R.T.: 0.000 min
 Response: 263576
 Conc: 206.07 ng/ml

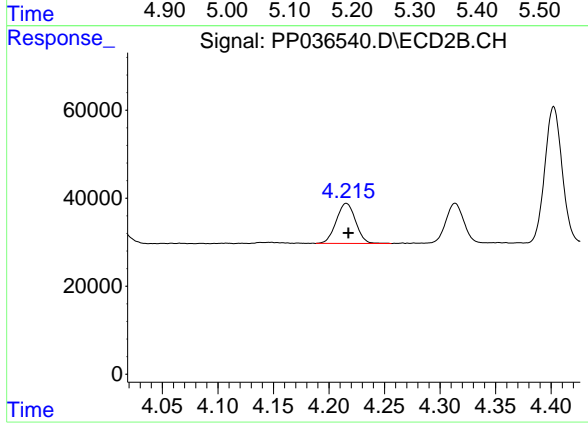
Instrument :
 ECD_P
ClientSampleId :
 ICVPP061721AR1232



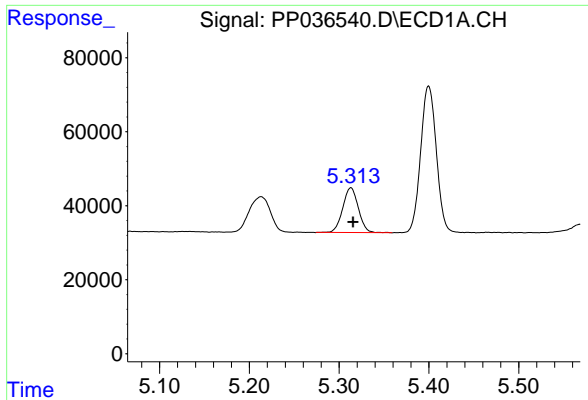
#7 AR-1016-5
 R.T.: 5.703 min
 Delta R.T.: -0.002 min
 Response: 183630
 Conc: 202.63 ng/ml



#8 AR-1221-1
 R.T.: 5.213 min
 Delta R.T.: -0.003 min
 Response: 155132
 Conc: 276.32 ng/ml

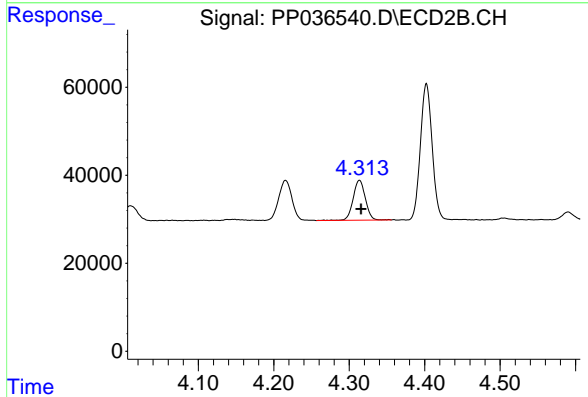


#8 AR-1221-1
 R.T.: 4.216 min
 Delta R.T.: -0.002 min
 Response: 110884
 Conc: 284.94 ng/ml

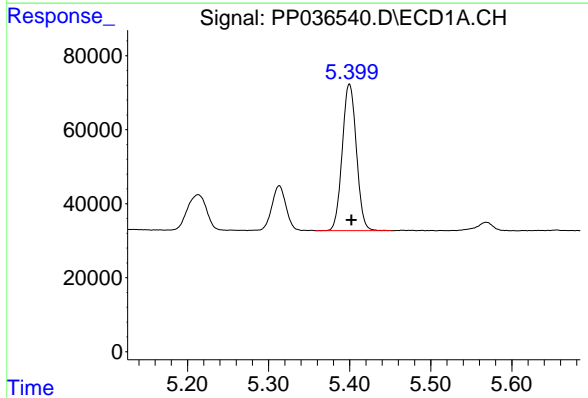


#9 AR-1221-2
 R.T.: 5.313 min
 Delta R.T.: -0.002 min
 Response: 146467
 Conc: 339.88 ng/ml

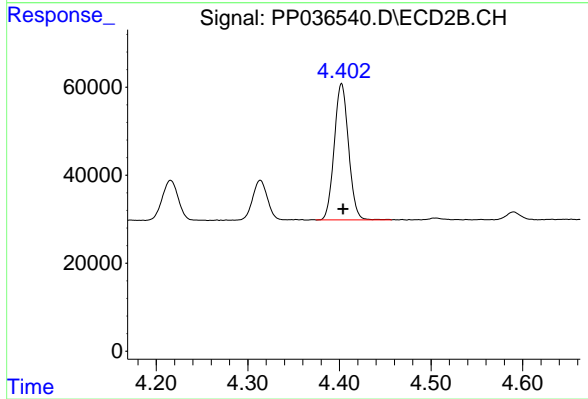
Instrument :
 ECD_P
ClientSampleId :
 ICVPP061721AR1232



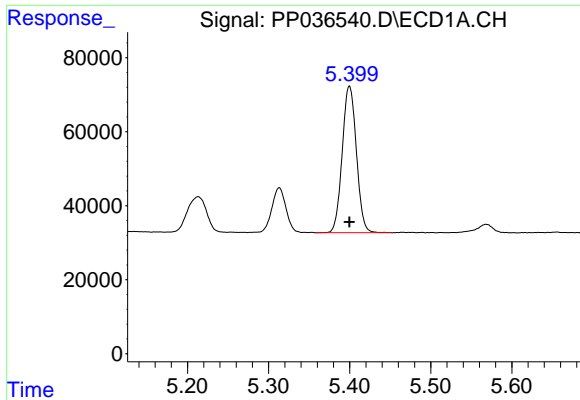
#9 AR-1221-2
 R.T.: 4.314 min
 Delta R.T.: -0.002 min
 Response: 101875
 Conc: 341.31 ng/ml



#10 AR-1221-3
 R.T.: 5.400 min
 Delta R.T.: -0.002 min
 Response: 480781
 Conc: 372.92 ng/ml



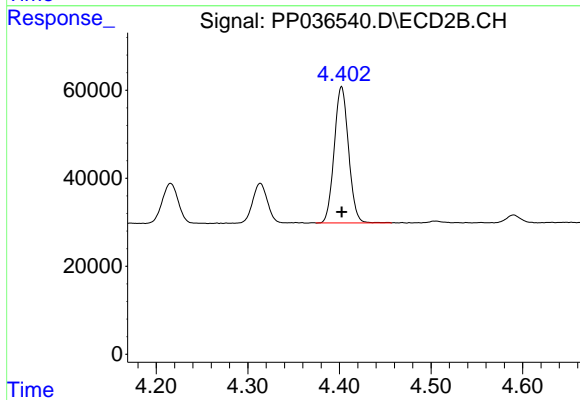
#10 AR-1221-3
 R.T.: 4.402 min
 Delta R.T.: -0.002 min
 Response: 335966
 Conc: 372.04 ng/ml



#11 AR-1232-1

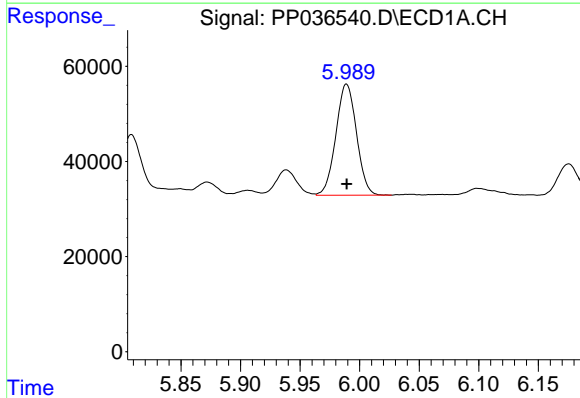
R.T.: 5.400 min
 Delta R.T.: 0.000 min
 Response: 480781
 Conc: 451.41 ng/ml

Instrument :
 ECD_P
 ClientSampleId :
 ICVPP061721AR1232



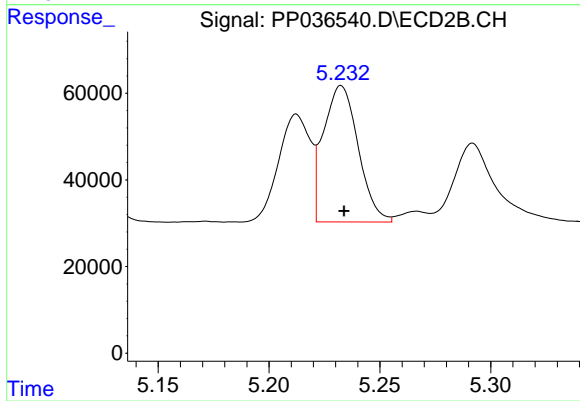
#11 AR-1232-1

R.T.: 4.402 min
 Delta R.T.: 0.000 min
 Response: 335966
 Conc: 456.68 ng/ml



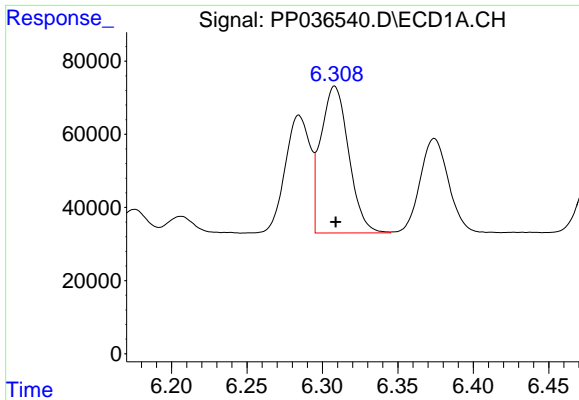
#12 AR-1232-2

R.T.: 5.989 min
 Delta R.T.: 0.000 min
 Response: 281599
 Conc: 512.02 ng/ml



#12 AR-1232-2

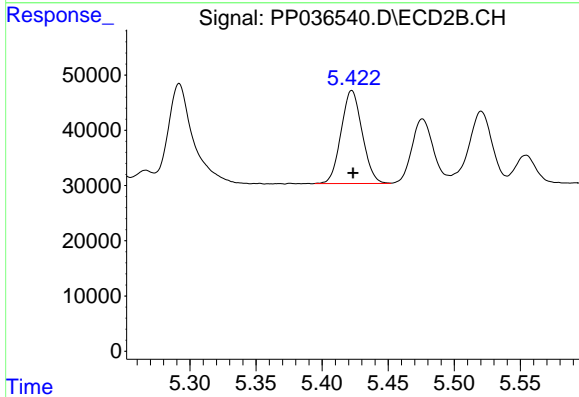
R.T.: 5.233 min
 Delta R.T.: -0.001 min
 Response: 343947
 Conc: 514.37 ng/ml



#13 AR-1232-3

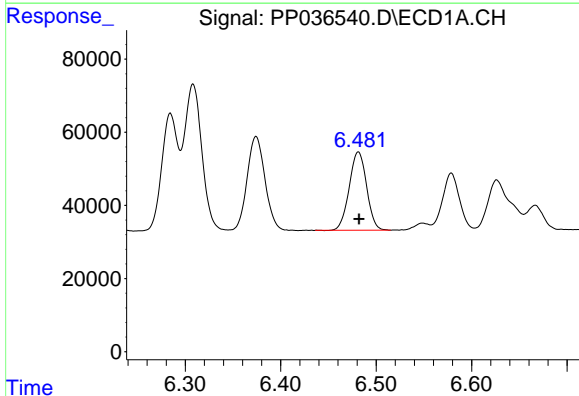
R.T.: 6.308 min
 Delta R.T.: 0.000 min
 Response: 515466
 Conc: 504.59 ng/ml

Instrument :
 ECD_P
 ClientSampleId :
 ICVPP061721AR1232



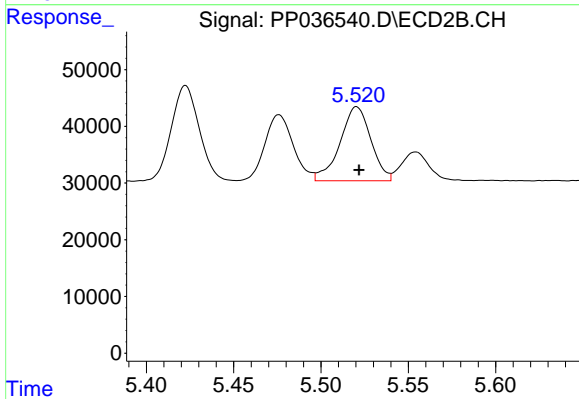
#13 AR-1232-3

R.T.: 5.422 min
 Delta R.T.: -0.001 min
 Response: 187167
 Conc: 515.93 ng/ml



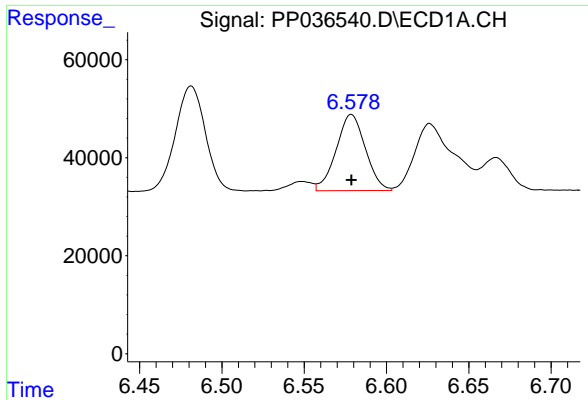
#14 AR-1232-4

R.T.: 6.481 min
 Delta R.T.: 0.000 min
 Response: 270811
 Conc: 501.71 ng/ml



#14 AR-1232-4

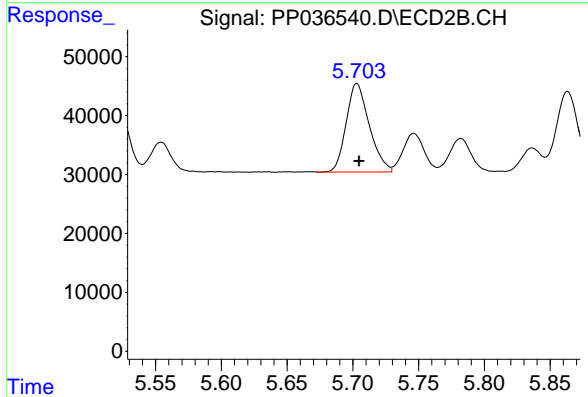
R.T.: 5.520 min
 Delta R.T.: -0.001 min
 Response: 161116
 Conc: 514.51 ng/ml



#15 AR-1232-5

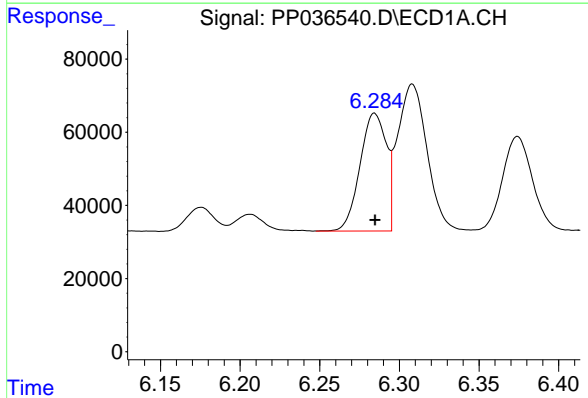
R.T.: 6.579 min
 Delta R.T.: 0.000 min
 Response: 192075
 Conc: 524.08 ng/ml

Instrument :
 ECD_P
 ClientSampleId :
 ICVPP061721AR1232



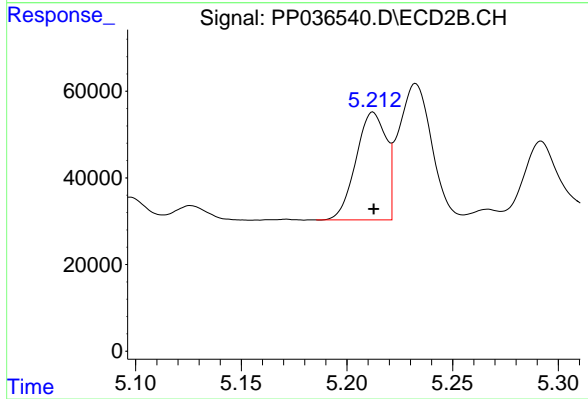
#15 AR-1232-5

R.T.: 5.703 min
 Delta R.T.: -0.002 min
 Response: 183630
 Conc: 515.53 ng/ml



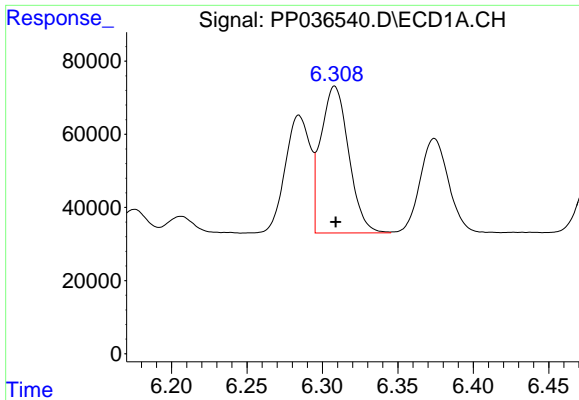
#16 AR-1242-1

R.T.: 6.284 min
 Delta R.T.: 0.000 min
 Response: 370905
 Conc: 289.24 ng/ml



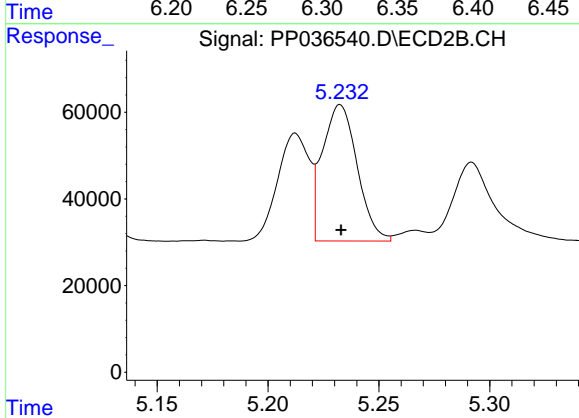
#16 AR-1242-1

R.T.: 5.212 min
 Delta R.T.: 0.000 min
 Response: 247233
 Conc: 277.76 ng/ml

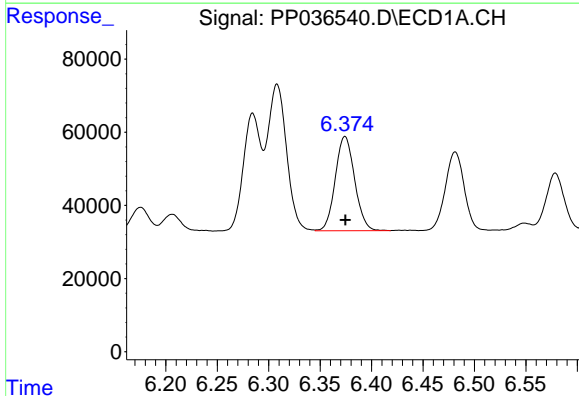


#17 AR-1242-2
 R.T.: 6.308 min
 Delta R.T.: 0.000 min
 Response: 515466
 Conc: 282.48 ng/ml

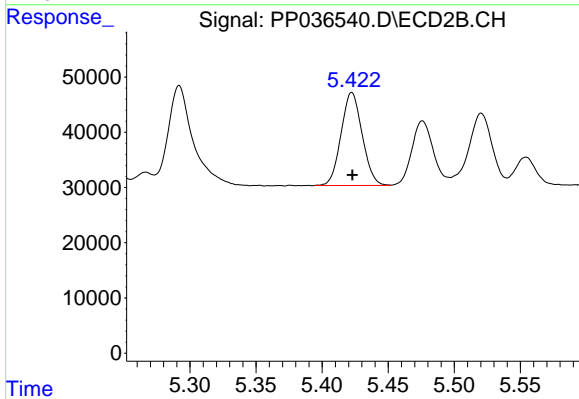
Instrument :
 ECD_P
ClientSampleId :
 ICVPP061721AR1232



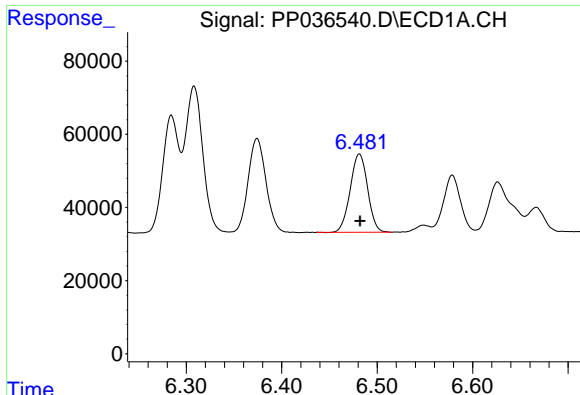
#17 AR-1242-2
 R.T.: 5.233 min
 Delta R.T.: 0.000 min
 Response: 343947
 Conc: 281.97 ng/ml



#18 AR-1242-3
 R.T.: 6.374 min
 Delta R.T.: 0.000 min
 Response: 338060
 Conc: 288.16 ng/ml

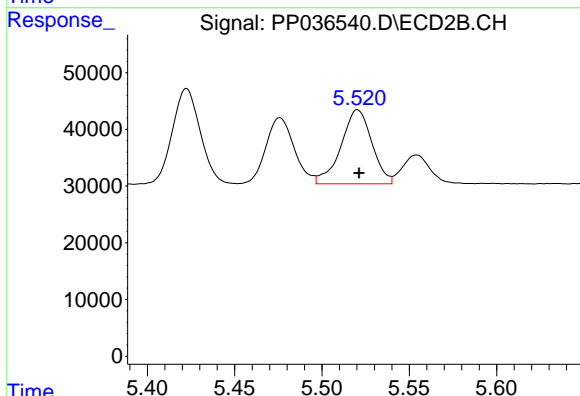


#18 AR-1242-3
 R.T.: 5.422 min
 Delta R.T.: 0.000 min
 Response: 187167
 Conc: 278.16 ng/ml

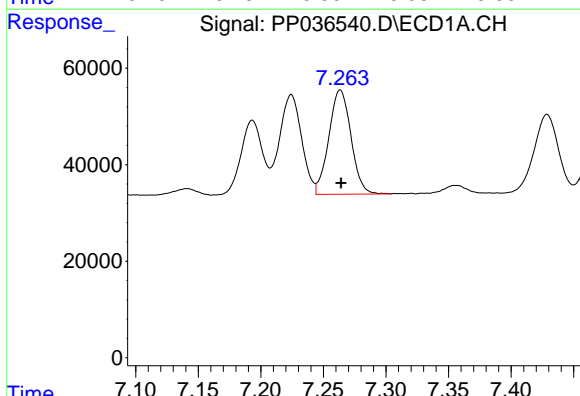


#19 AR-1242-4
 R.T.: 6.481 min
 Delta R.T.: 0.000 min
 Response: 270811
 Conc: 279.83 ng/ml

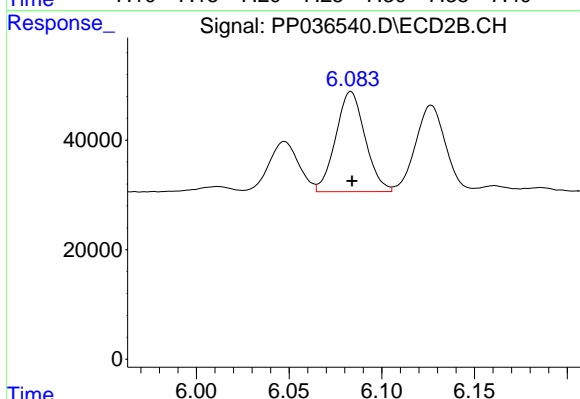
Instrument :
 ECD_P
ClientSampleId :
 ICVPP061721AR1232



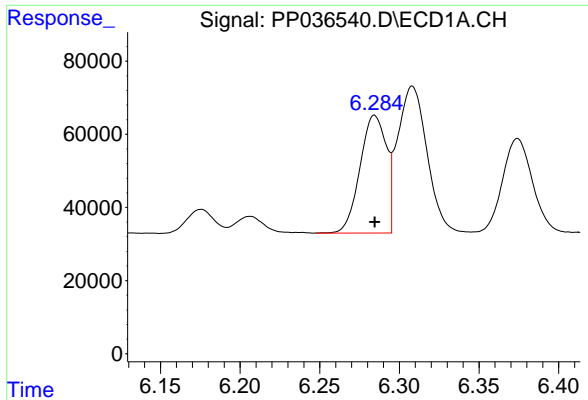
#19 AR-1242-4
 R.T.: 5.520 min
 Delta R.T.: 0.000 min
 Response: 161116
 Conc: 248.85 ng/ml



#20 AR-1242-5
 R.T.: 7.263 min
 Delta R.T.: 0.000 min
 Response: 266471
 Conc: 253.33 ng/ml

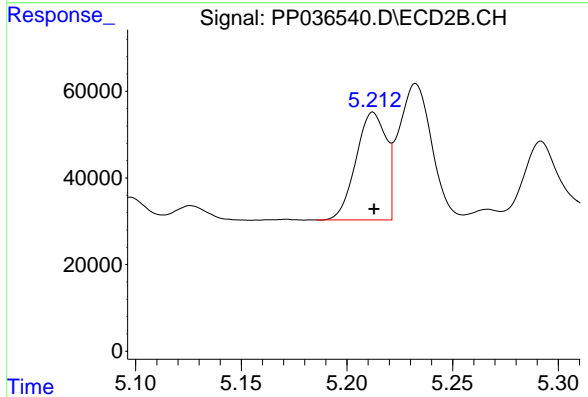


#20 AR-1242-5
 R.T.: 6.083 min
 Delta R.T.: 0.000 min
 Response: 202057
 Conc: 247.65 ng/ml

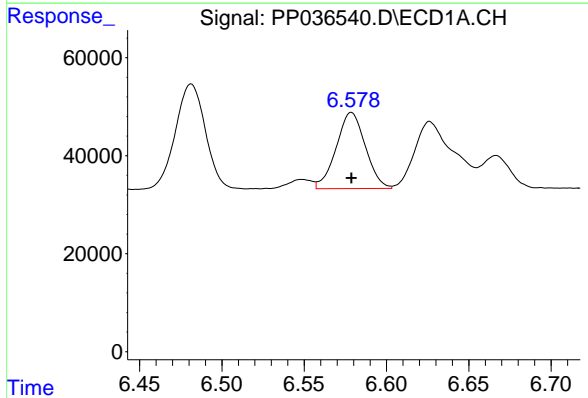


#21 AR-1248-1
 R.T.: 6.284 min
 Delta R.T.: 0.000 min
 Response: 370905
 Conc: 367.66 ng/ml

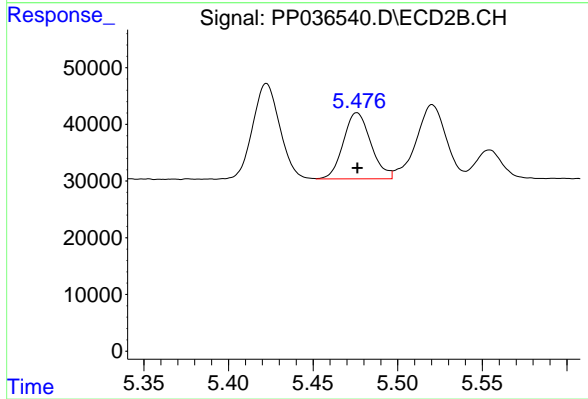
Instrument :
 ECD_P
ClientSampleId :
 ICVPP061721AR1232



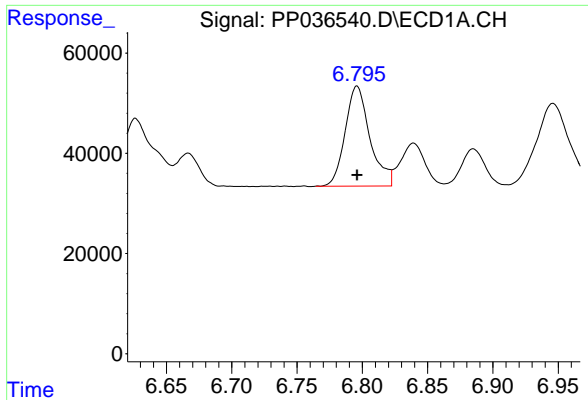
#21 AR-1248-1
 R.T.: 5.212 min
 Delta R.T.: 0.000 min
 Response: 247233
 Conc: 354.83 ng/ml



#22 AR-1248-2
 R.T.: 6.579 min
 Delta R.T.: 0.000 min
 Response: 192075
 Conc: 141.43 ng/ml



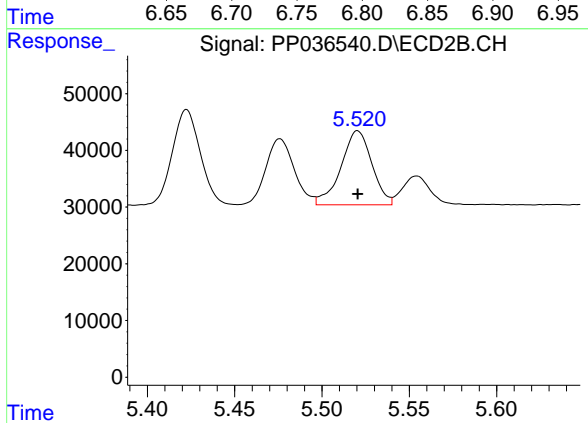
#22 AR-1248-2
 R.T.: 5.476 min
 Delta R.T.: 0.000 min
 Response: 132167
 Conc: 139.54 ng/ml



#23 AR-1248-3

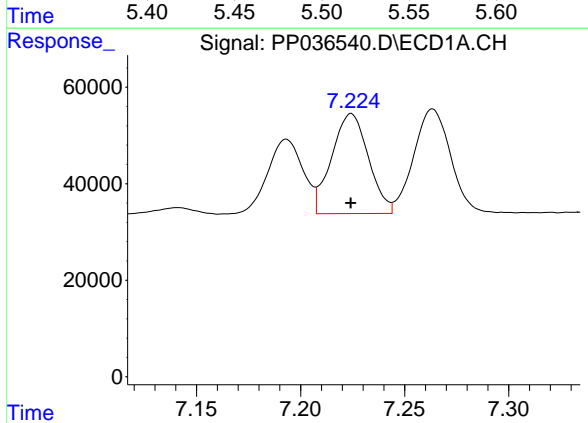
R.T.: 6.796 min
 Delta R.T.: 0.000 min
 Response: 263576
 Conc: 161.99 ng/ml

Instrument :
 ECD_P
 ClientSampleId :
 ICVPP061721AR1232



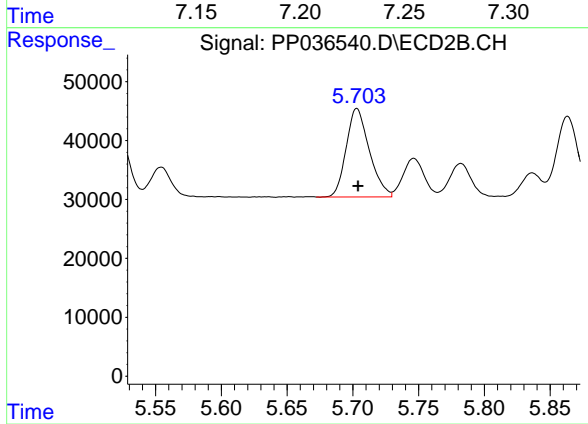
#23 AR-1248-3

R.T.: 5.520 min
 Delta R.T.: 0.000 min
 Response: 161116
 Conc: 162.84 ng/ml



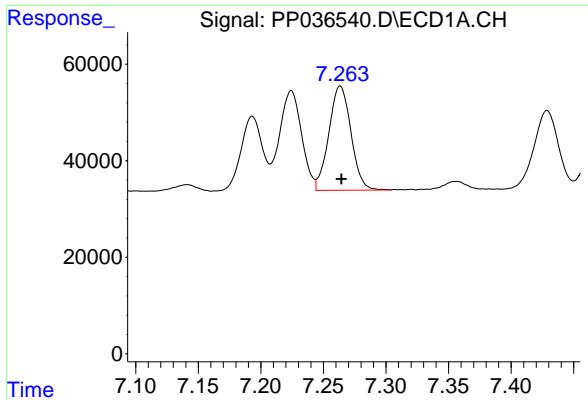
#24 AR-1248-4

R.T.: 7.224 min
 Delta R.T.: 0.000 min
 Response: 255397
 Conc: 139.89 ng/ml



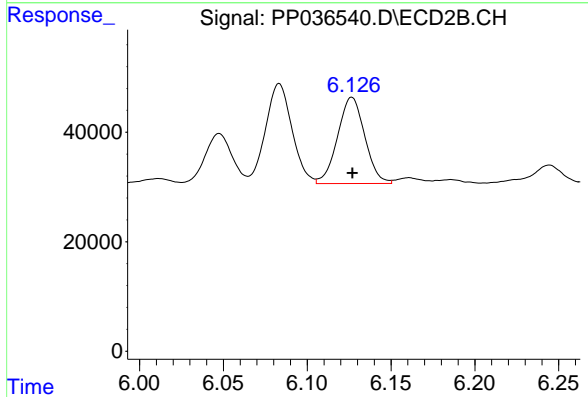
#24 AR-1248-4

R.T.: 5.703 min
 Delta R.T.: -0.001 min
 Response: 183630
 Conc: 156.99 ng/ml

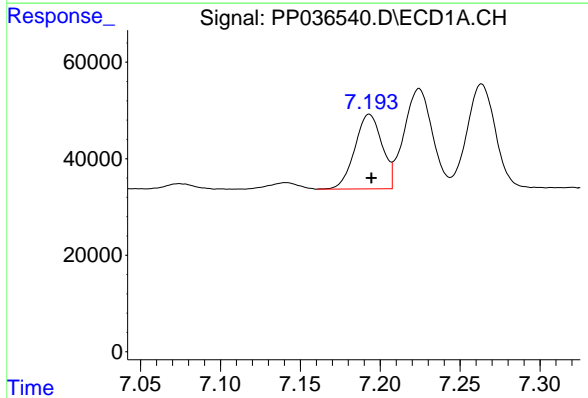


#25 AR-1248-5
 R.T.: 7.263 min
 Delta R.T.: 0.000 min
 Response: 266471
 Conc: 147.79 ng/ml

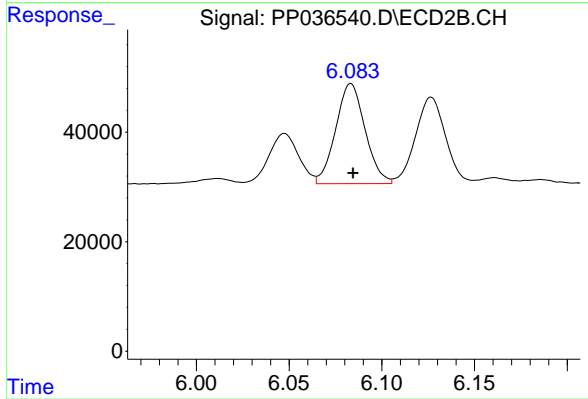
Instrument :
 ECD_P
 ClientSampleId :
 ICVPP061721AR1232



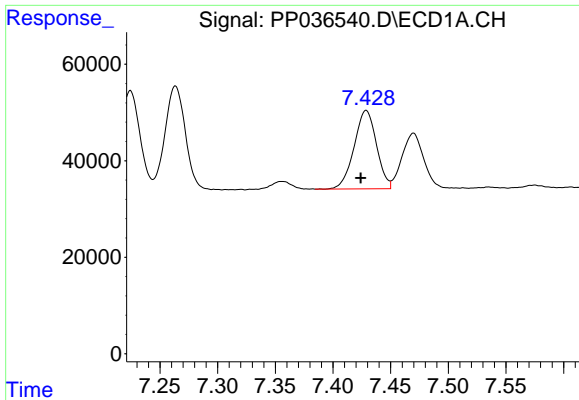
#25 AR-1248-5
 R.T.: 6.127 min
 Delta R.T.: 0.000 min
 Response: 178454
 Conc: 150.45 ng/ml



#26 AR-1254-1
 R.T.: 7.193 min
 Delta R.T.: -0.001 min
 Response: 183418
 Conc: 104.29 ng/ml



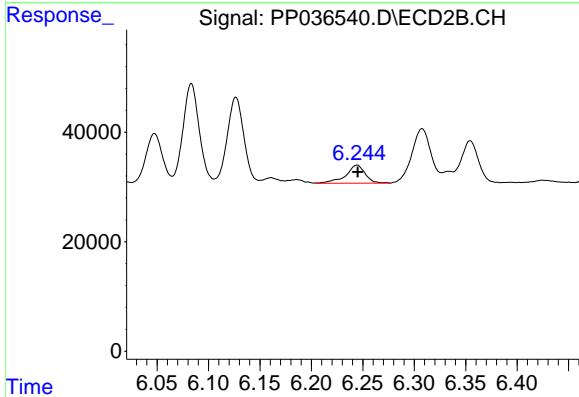
#26 AR-1254-1
 R.T.: 6.083 min
 Delta R.T.: -0.001 min
 Response: 202057
 Conc: 119.25 ng/ml



#27 AR-1254-2

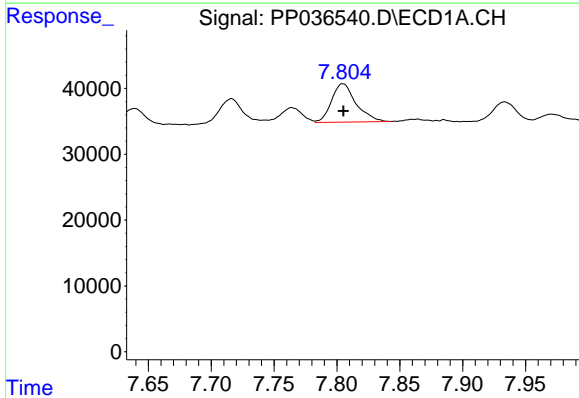
R.T.: 7.429 min
 Delta R.T.: 0.005 min
 Response: 219416
 Conc: 81.09 ng/ml

Instrument :
 ECD_P
 ClientSampleId :
 ICVPP061721AR1232



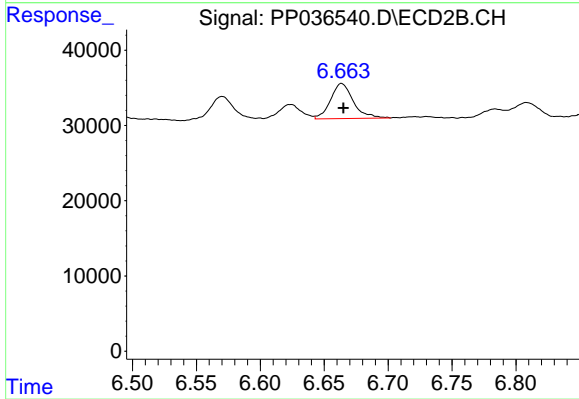
#27 AR-1254-2

R.T.: 6.244 min
 Delta R.T.: 0.000 min
 Response: 43501
 Conc: 29.25 ng/ml



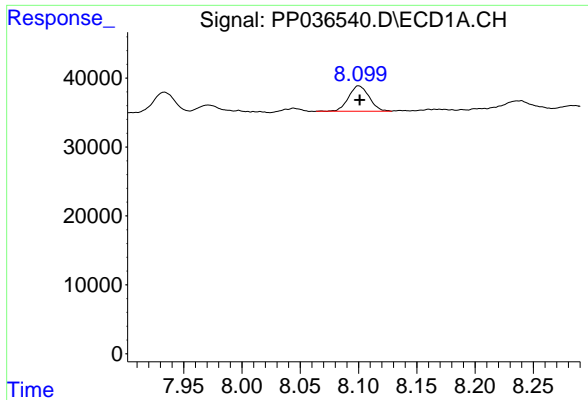
#28 AR-1254-3

R.T.: 7.805 min
 Delta R.T.: 0.000 min
 Response: 79226
 Conc: 26.75 ng/ml



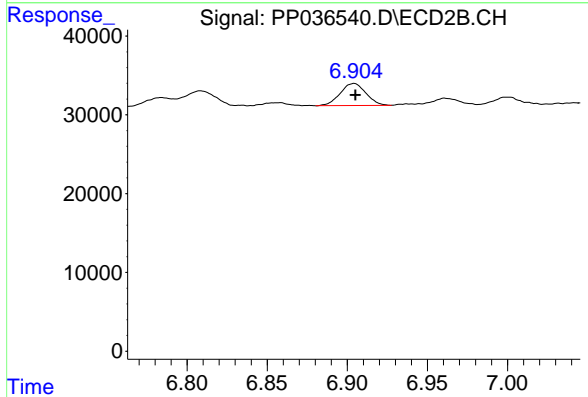
#28 AR-1254-3

R.T.: 6.664 min
 Delta R.T.: -0.001 min
 Response: 58040
 Conc: 23.87 ng/ml

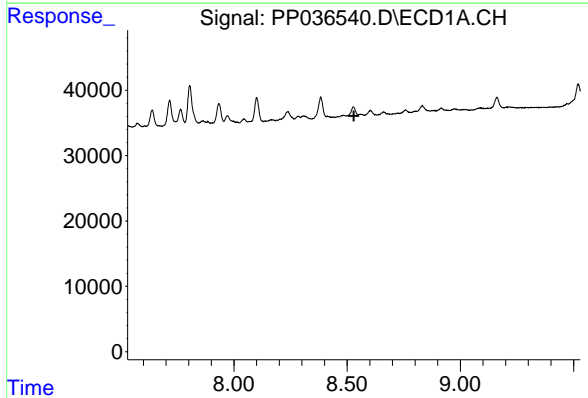


#29 AR-1254-4
 R.T.: 8.100 min
 Delta R.T.: 0.000 min
 Response: 44818
 Conc: 20.39 ng/ml

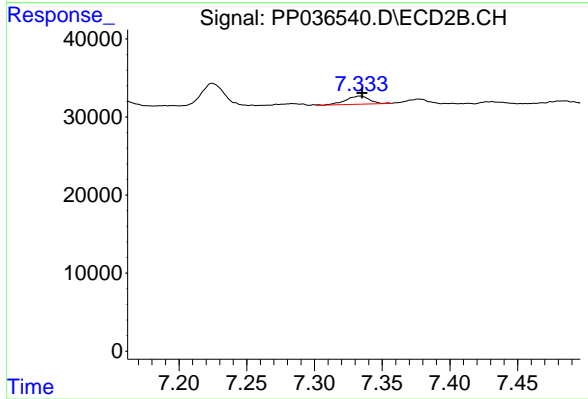
Instrument :
 ECD_P
 ClientSampleId :
 ICVPP061721AR1232



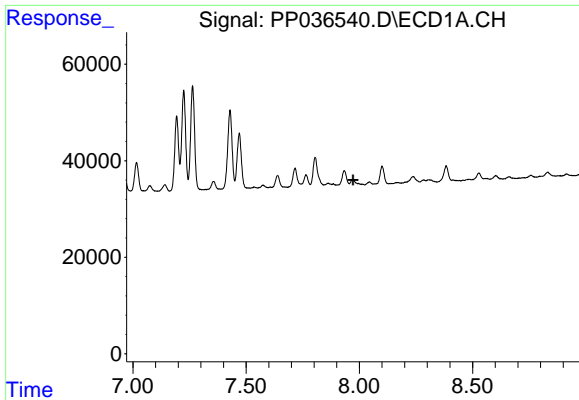
#29 AR-1254-4
 R.T.: 6.904 min
 Delta R.T.: 0.000 min
 Response: 31291
 Conc: 20.22 ng/ml



#30 AR-1254-5
 R.T.: 0.000 min
 Exp R.T. : 8.530 min
 Response: 0
 Conc: N.D.



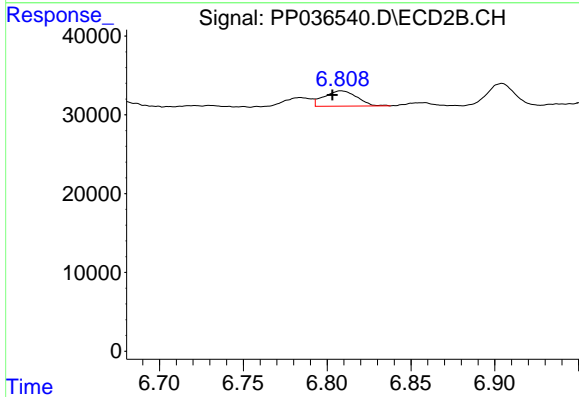
#30 AR-1254-5
 R.T.: 7.334 min
 Delta R.T.: -0.001 min
 Response: 12813
 Conc: 5.96 ng/ml



#31 AR-1260-1

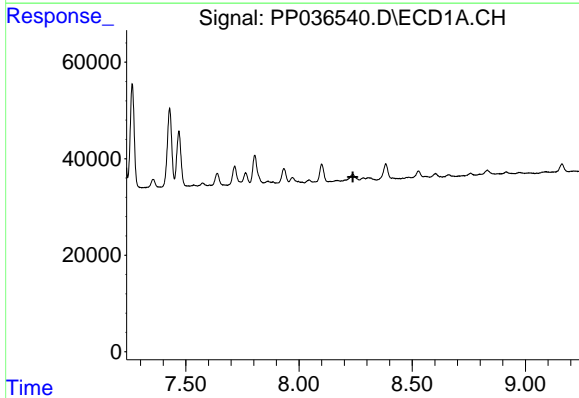
R.T.: 0.000 min
 Exp R.T. : 7.972 min
 Response: 0
 Conc: N.D.

Instrument :
 ECD_P
ClientSampleId :
 ICVPP061721AR1232



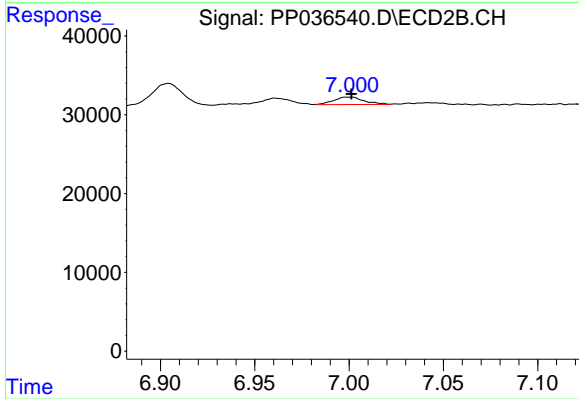
#31 AR-1260-1

R.T.: 6.808 min
 Delta R.T.: 0.005 min
 Response: 26607
 Conc: 16.53 ng/ml



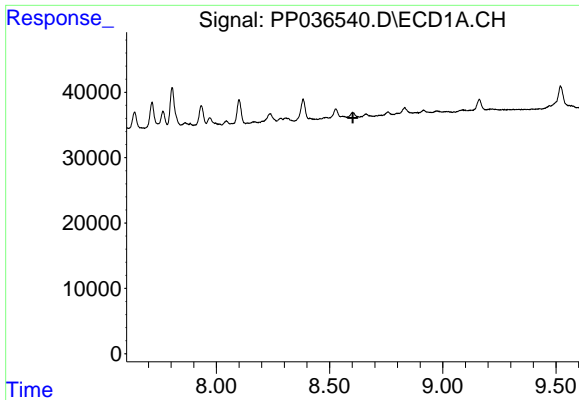
#32 AR-1260-2

R.T.: 0.000 min
 Exp R.T. : 8.238 min
 Response: 0
 Conc: N.D.



#32 AR-1260-2

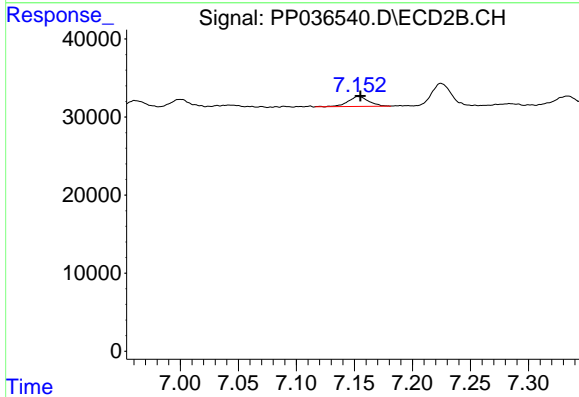
R.T.: 7.000 min
 Delta R.T.: -0.001 min
 Response: 10638
 Conc: 5.49 ng/ml



#33 AR-1260-3

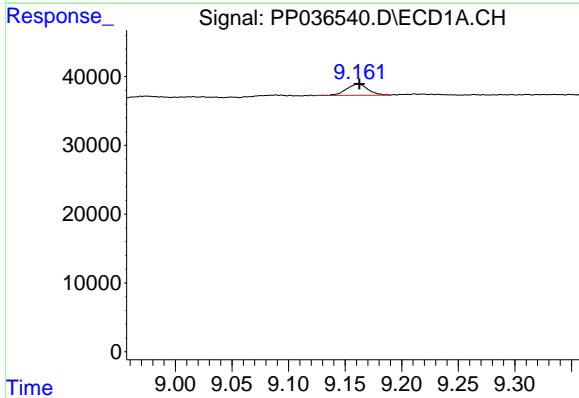
R.T.: 0.000 min
 Exp R.T.: 8.603 min
 Response: 0
 Conc: N.D.

Instrument :
 ECD_P
ClientSampleId :
 ICVPP061721AR1232



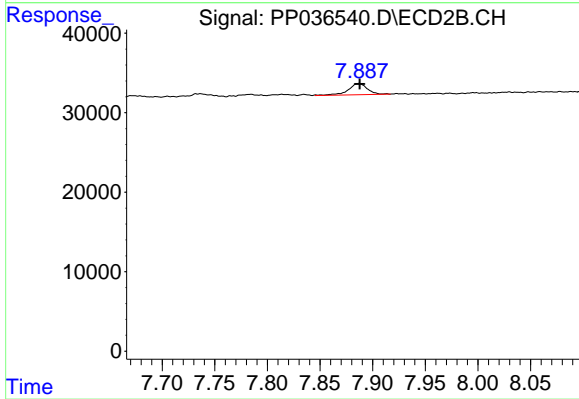
#33 AR-1260-3

R.T.: 7.154 min
 Delta R.T.: -0.002 min
 Response: 15510
 Conc: 8.53 ng/ml



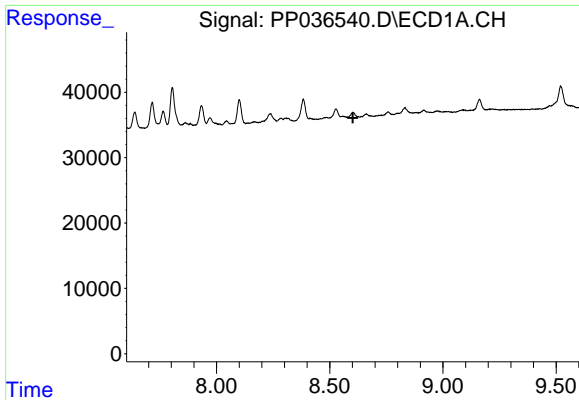
#35 AR-1260-5

R.T.: 9.161 min
 Delta R.T.: -0.001 min
 Response: 21316
 Conc: 4.78 ng/ml



#35 AR-1260-5

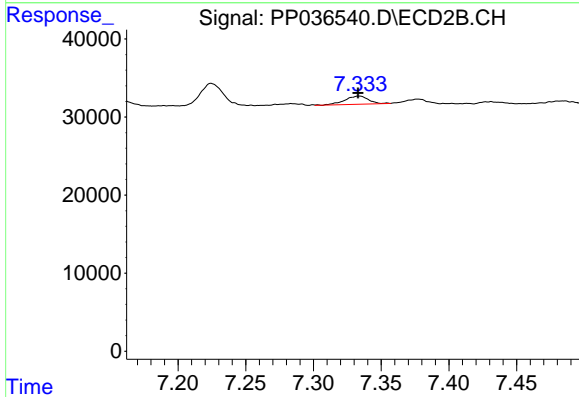
R.T.: 7.887 min
 Delta R.T.: 0.000 min
 Response: 17929
 Conc: 4.88 ng/ml



#36 AR-1262-1

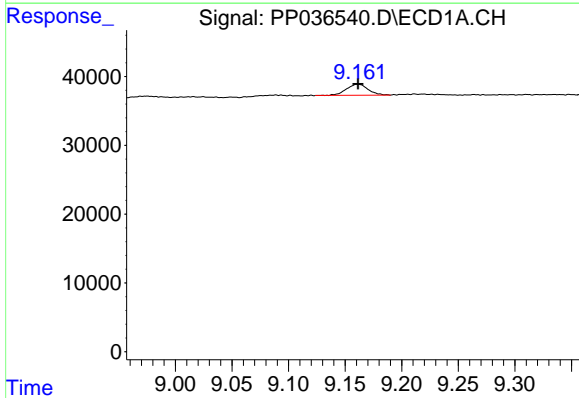
R.T.: 0.000 min
 Exp R.T.: 8.602 min
 Response: 0
 Conc: N.D.

Instrument :
 ECD_P
ClientSampleId :
 ICVPP061721AR1232



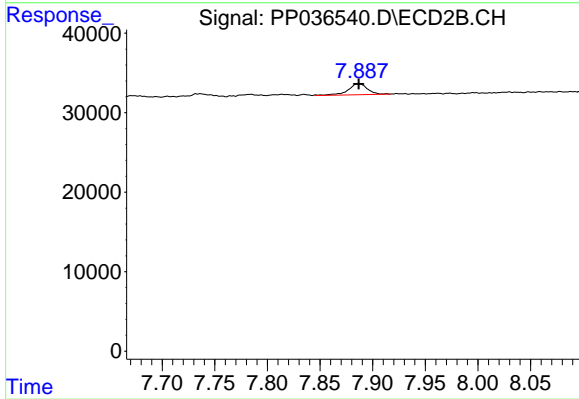
#36 AR-1262-1

R.T.: 7.334 min
 Delta R.T.: 0.000 min
 Response: 12813
 Conc: 10.75 ng/ml



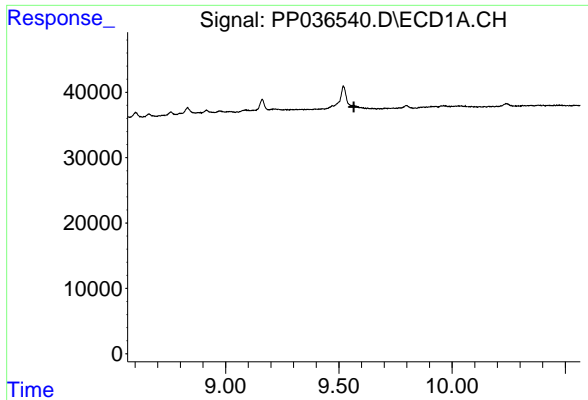
#37 AR-1262-2

R.T.: 9.161 min
 Delta R.T.: 0.000 min
 Response: 21316
 Conc: 4.20 ng/ml



#37 AR-1262-2

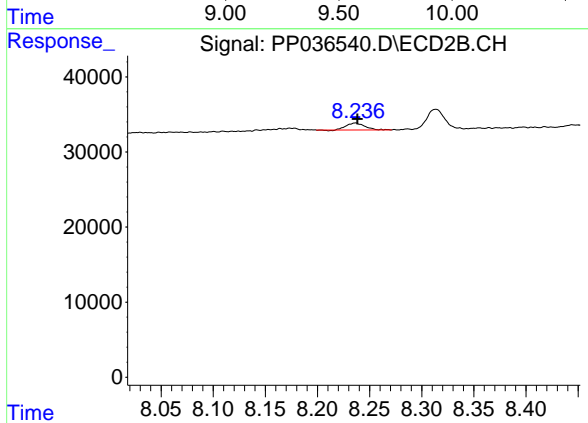
R.T.: 7.887 min
 Delta R.T.: 0.000 min
 Response: 17929
 Conc: 4.57 ng/ml



#39 AR-1262-4

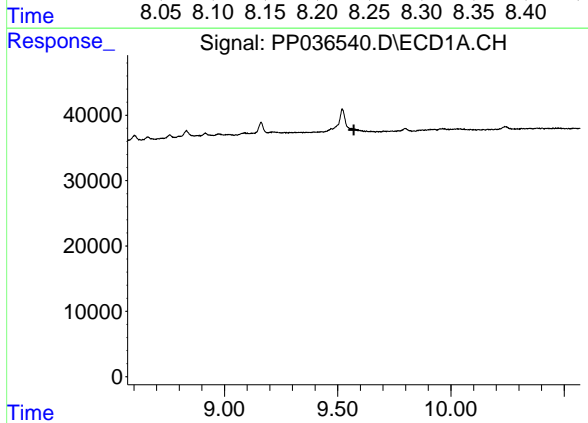
R.T.: 0.000 min
 Exp R.T. : 9.567 min
 Response: 0
 Conc: N.D.

Instrument :
 ECD_P
 ClientSampleId :
 ICVPP061721AR1232



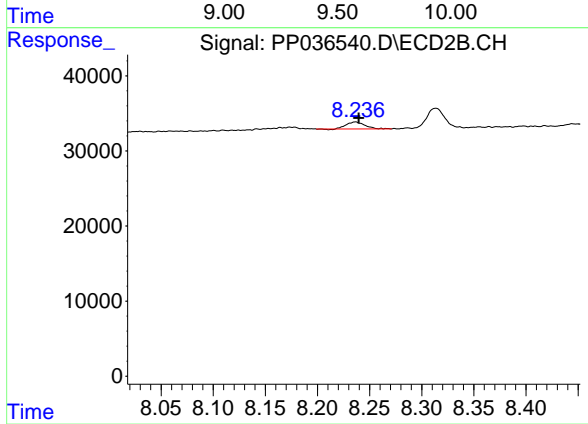
#39 AR-1262-4

R.T.: 8.236 min
 Delta R.T.: -0.002 min
 Response: 11257
 Conc: 3.78 ng/ml



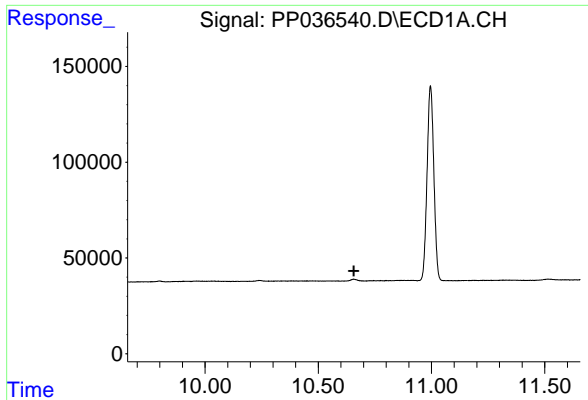
#42 AR-1268-2

R.T.: 0.000 min
 Exp R.T. : 9.572 min
 Response: 0
 Conc: N.D.



#42 AR-1268-2

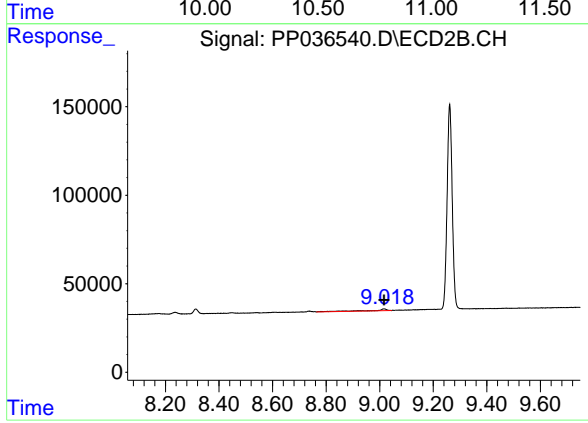
R.T.: 8.236 min
 Delta R.T.: -0.003 min
 Response: 11257
 Conc: 2.61 ng/ml



#45 AR-1268-5

R.T.: 0.000 min
Exp R.T.: 10.657 min
Response: 0
Conc: N.D.

Instrument :
ECD_P
ClientSampleId :
ICVPP061721AR1232



#45 AR-1268-5

R.T.: 9.018 min
Delta R.T.: 0.001 min
Response: 37113
Conc: 3.14 ng/ml