

Data Path : Z:\pestpcbsrv\HPCHEM1\ECD_P\Data\PP061821\
 Data File : PP036597.D
 Signal(s) : Signal #1: ECD1A.CH Signal #2: ECD2B.CH
 Acq On : 19 Jun 2021 3:46
 Operator : DD\AJ
 Sample : AR1254CCC500
 Misc :
 ALS Vial : 6 Sample Multiplier: 1

Instrument :
 ECD_P
 ClientSampled :

Integration File signal 1: autoint1.e
 Integration File signal 2: autoint2.e
 Quant Time: Jun 19 05:04:01 2021
 Quant Method : Z:\pestpcbsrv\HPCHEM1\ECD_P\methods\PP061721.M
 Quant Title : GC EXTRACTABLES
 QLast Update : Fri Jun 18 06:06:19 2021
 Response via : Initial Calibration
 Integrator: ChemStation 6890 Scale Mode: Small noise peaks clipped

Volume Inj. : 2 µl
 Signal #1 Phase : ZB-MR1 Signal #2 Phase: ZB-MR2
 Signal #1 Info : 30Mx0.32mmx 0.50µ Signal #2 Info : 30M x 0.32mm x 0.25µm

Compound	RT#1	RT#2	Resp#1	Resp#2	ng/ml	ng/ml
System Monitoring Compounds						
1) SA Tetrachlo...	4.965	3.957	2234055	1619440	50.546	52.285
2) SA Decachlor...	10.999	9.261	2078536	1470225	48.454	45.972
Target Compounds						
3) L1 AR-1016-1	6.285	5.211	22317	16618	13.176	14.097
4) L1 AR-1016-2	6.312	5.231	29070	10759	12.056	6.624 #
5) L1 AR-1016-3	6.376	0.000	13112	0	8.529	N.D. #
6) L1 AR-1016-4	6.480	5.476	13191	341010	10.261	480.376 #
7) L1 AR-1016-5	6.797	5.703	298412	232255	233.307	256.288
9) L2 AR-1221-2	5.316	4.308	35443	22394	82.247	75.026
12) L3 AR-1232-2	5.990	5.231	14597	10759	26.540	16.090 #
13) L3 AR-1232-3	6.312	0.000	29070	0	28.456	N.D. #
14) L3 AR-1232-4	6.480	5.519	13191	102954	24.437	328.777 #
15) L3 AR-1232-5	6.579	5.703	488576	232255	1333.078	652.047 #
16) L4 AR-1242-1	6.285	5.211	22317	16618	17.404	18.670
17) L4 AR-1242-2	6.312	5.231	29070	10759	15.930	8.820 #
18) L4 AR-1242-3	6.376	0.000	13112	0	11.176	N.D. #
19) L4 AR-1242-4	6.480	5.519	13191	102954	13.630	159.020 #
20) L4 AR-1242-5	7.267	6.083	284038	888368	270.030	1088.816 #
21) L5 AR-1248-1	6.285	5.211	22317	16618	22.122	23.850
22) L5 AR-1248-2	6.579	5.476	488576	341010	359.760	360.027
23) L5 AR-1248-3	6.797	5.519	298412	102954	183.404	104.053 #
24) L5 AR-1248-4	7.225	5.703	458278	232255	251.008	198.555
25) L5 AR-1248-5	7.267	6.126	284038	147903	157.533	124.690
26) L6 AR-1254-1	7.194	6.083	865342	888368	492.045	524.307
27) L6 AR-1254-2	7.424	6.244	1263786	784123	467.080	527.175
28) L6 AR-1254-3	7.806	6.663	1353993	1201925	457.114	494.382
29) L6 AR-1254-4	8.102	6.904	1016779	744516	462.519	481.117
30) L6 AR-1254-5	8.530	7.334	1118873	1031343	470.482	479.631
31) L7 AR-1260-1	7.972	6.803	544342	554786	250.790	344.579 #
32) L7 AR-1260-2	8.238	7.000	637439	468088	248.713	241.374
33) L7 AR-1260-3	8.592	7.152	155419	469926	77.536	258.387 #
34) L7 AR-1260-4	8.826	7.638	481972	50205	203.429	32.375 #
35) L7 AR-1260-5	9.162	7.886	165532	113425	37.099	30.866
36) L8 AR-1262-1	8.592	7.334	155419	1031343	54.543	865.304 #
37) L8 AR-1262-2	9.162	7.886	165532	113425	32.580	28.935
38) L8 AR-1262-3	9.498f	0.000	132467	0	35.758	N.D. #
39) L8 AR-1262-4	9.548f	8.233	38150	116501	13.283	39.142 #
41) L9 AR-1268-1	9.498f	0.000	132467	0	22.080	N.D. #
42) L9 AR-1268-2	9.548f	8.233	38150	116501	6.693	27.008 #
45) L9 AR-1268-5	10.662	9.016	15327	28918	0.997	2.446 #

Data Path : Z:\pestpcbsrv\HPCHEM1\ECD_P\Data\PP061821\
Data File : PP036597.D
Signal(s) : Signal #1: ECD1A.CH Signal #2: ECD2B.CH
Acq On : 19 Jun 2021 3:46
Operator : DD\AJ
Sample : AR1254CCC500
Misc :
ALS Vial : 6 Sample Multiplier: 1

Instrument :
ECD_P
ClientSampleId :

Integration File signal 1: autoint1.e
Integration File signal 2: autoint2.e
Quant Time: Jun 19 05:04:01 2021
Quant Method : Z:\pestpcbsrv\HPCHEM1\ECD_P\methods\PP061721.M
Quant Title : GC EXTRACTABLES
QLast Update : Fri Jun 18 06:06:19 2021
Response via : Initial Calibration
Integrator: ChemStation 6890 Scale Mode: Small noise peaks clipped

Volume Inj. : 2 µl
Signal #1 Phase : ZB-MR1 Signal #2 Phase: ZB-MR2
Signal #1 Info : 30Mx0.32mmx 0.50µ Signal #2 Info : 30M x 0.32mm x 0.25µm

Compound	RT#1	RT#2	Resp#1	Resp#2	ng/ml	ng/ml
----------	------	------	--------	--------	-------	-------

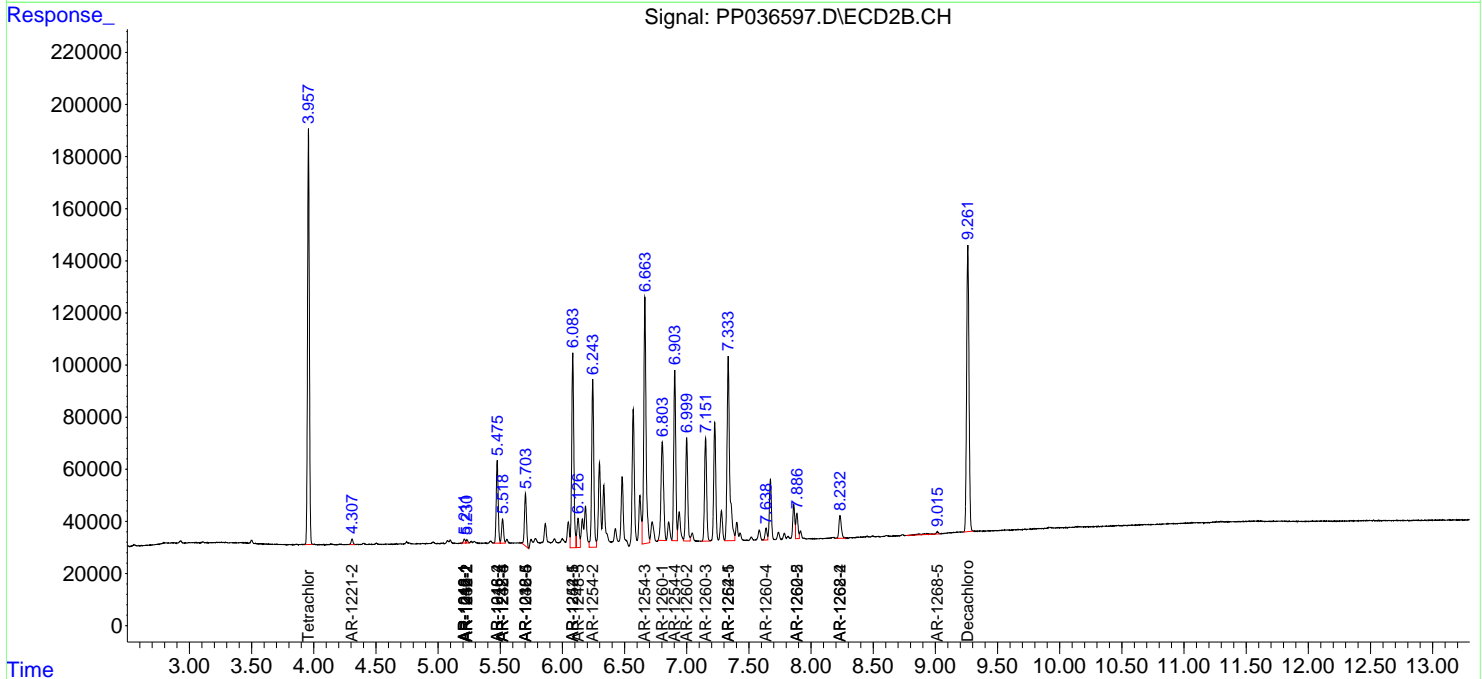
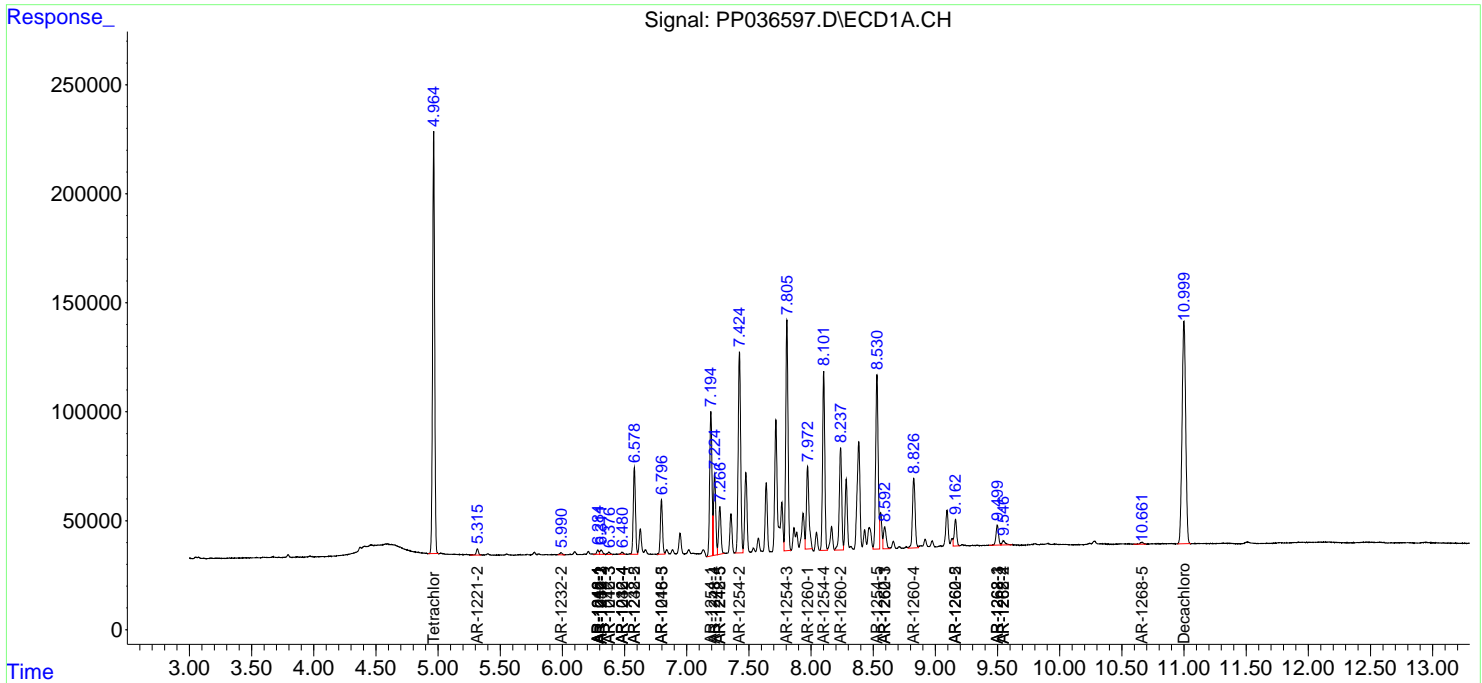
(f)=RT Delta > 1/2 Window (#)=Amounts differ by > 25% (m)=manual int.

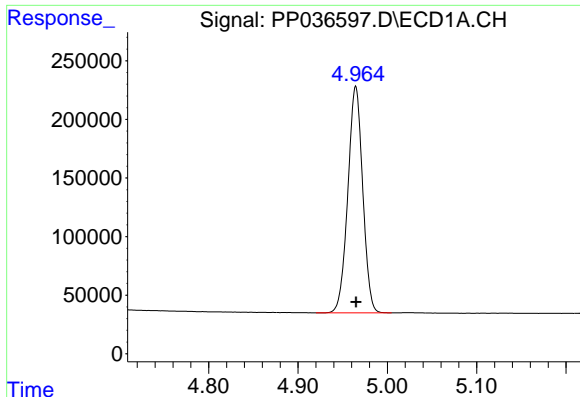
Data Path : Z:\pestpcbsrv\HPCHEM1\ECD_P\Data\PP061821\
 Data File : PP036597.D
 Signal(s) : Signal #1: ECD1A.CH Signal #2: ECD2B.CH
 Acq On : 19 Jun 2021 3:46
 Operator : DD\AJ
 Sample : AR1254CCC500
 Misc :
 ALS Vial : 6 Sample Multiplier: 1

Instrument :
 ECD_P
 ClientSampled :

Integration File signal 1: autoint1.e
 Integration File signal 2: autoint2.e
 Quant Time: Jun 19 05:04:01 2021
 Quant Method : Z:\pestpcbsrv\HPCHEM1\ECD_P\methods\PP061721.M
 Quant Title : GC EXTRACTABLES
 QLast Update : Fri Jun 18 06:06:19 2021
 Response via : Initial Calibration
 Integrator: ChemStation 6890 Scale Mode: Small noise peaks clipped

Volume Inj. : 2 µl
 Signal #1 Phase : ZB-MR1 Signal #2 Phase: ZB-MR2
 Signal #1 Info : 30Mx0.32mmx 0.50µ Signal #2 Info : 30M x 0.32mm x 0.25µm

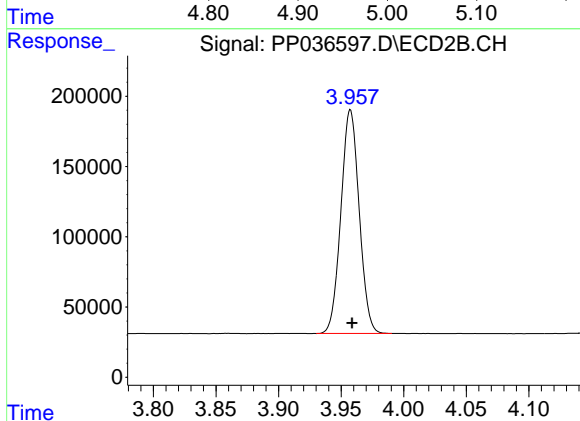




#1 Tetrachloro-m-xylene

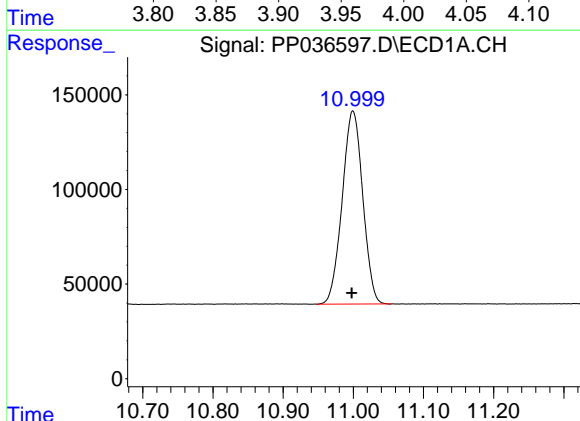
R.T.: 4.965 min
 Delta R.T.: 0.000 min
 Response: 2234055
 Conc: 50.55 ng/ml

Instrument :
 ECD_P
 ClientSampleId :



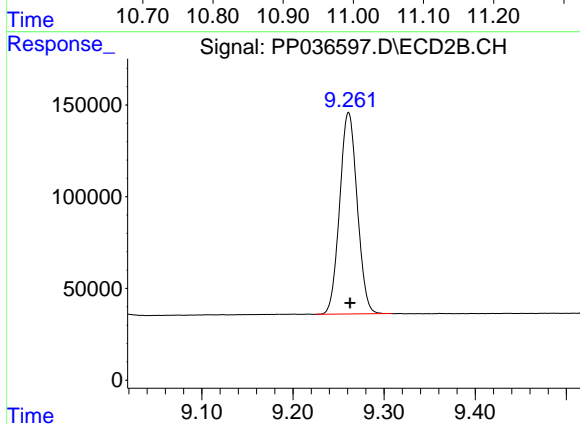
#1 Tetrachloro-m-xylene

R.T.: 3.957 min
 Delta R.T.: -0.001 min
 Response: 1619440
 Conc: 52.29 ng/ml



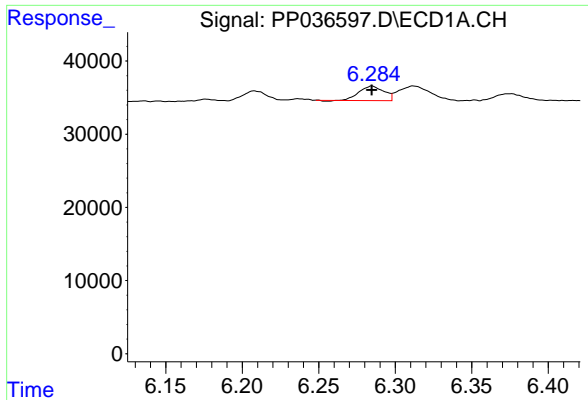
#2 Decachlorobiphenyl

R.T.: 10.999 min
 Delta R.T.: 0.001 min
 Response: 2078536
 Conc: 48.45 ng/ml



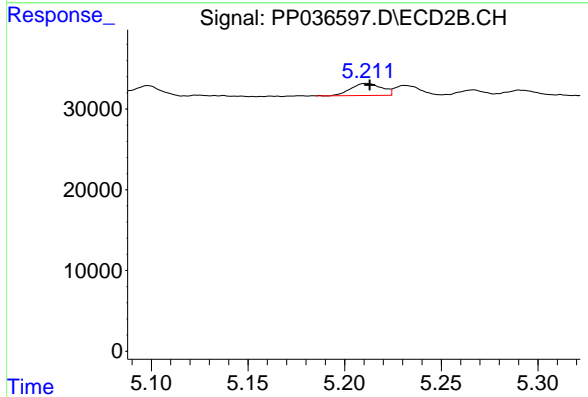
#2 Decachlorobiphenyl

R.T.: 9.261 min
 Delta R.T.: -0.002 min
 Response: 1470225
 Conc: 45.97 ng/ml

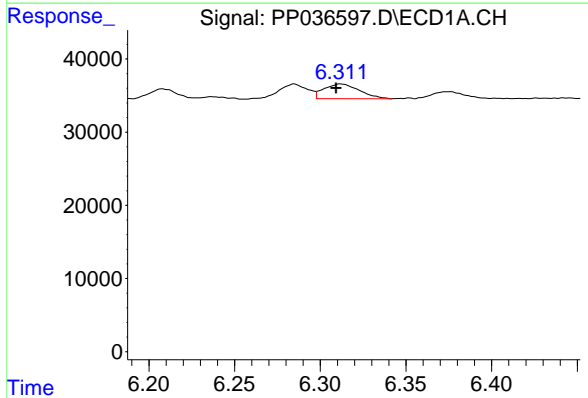


#3 AR-1016-1
 R.T.: 6.285 min
 Delta R.T.: 0.000 min
 Response: 22317
 Conc: 13.18 ng/ml

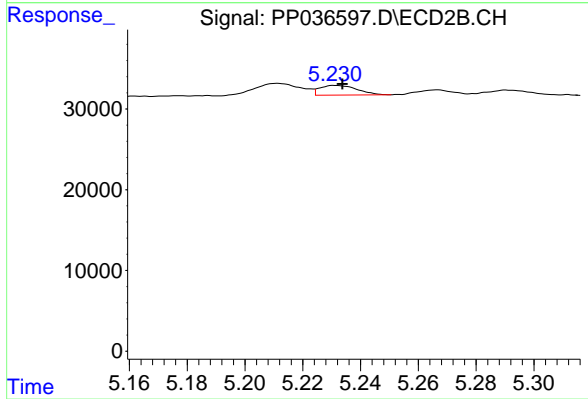
Instrument :
 ECD_P
 ClientSampleId :



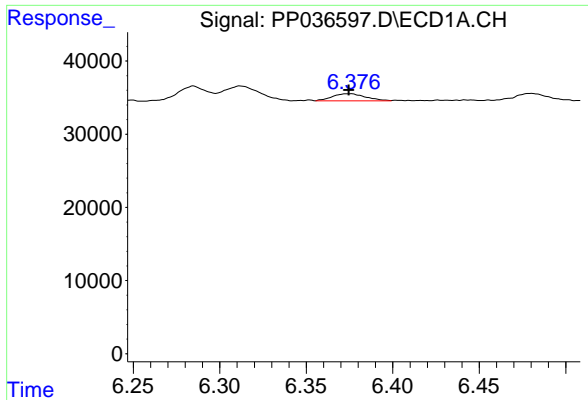
#3 AR-1016-1
 R.T.: 5.211 min
 Delta R.T.: -0.002 min
 Response: 16618
 Conc: 14.10 ng/ml



#4 AR-1016-2
 R.T.: 6.312 min
 Delta R.T.: 0.002 min
 Response: 29070
 Conc: 12.06 ng/ml

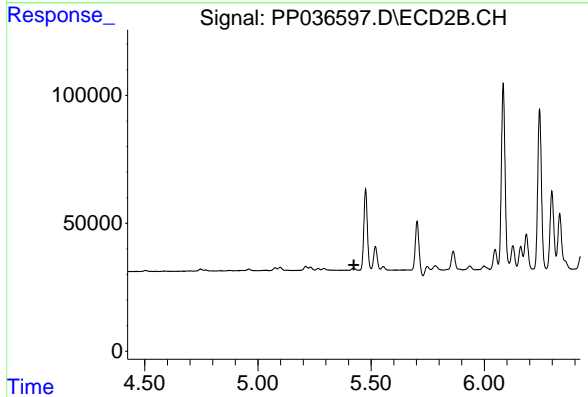


#4 AR-1016-2
 R.T.: 5.231 min
 Delta R.T.: -0.003 min
 Response: 10759
 Conc: 6.62 ng/ml

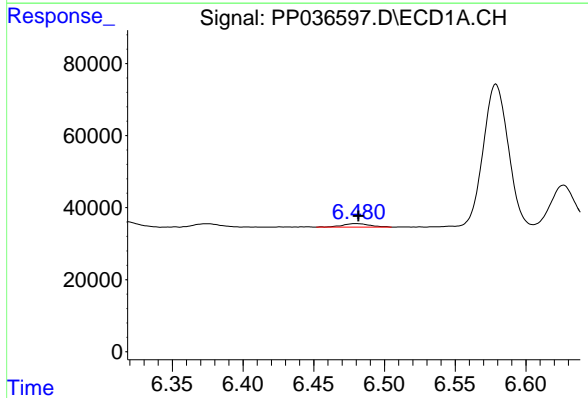


#5 AR-1016-3
 R.T.: 6.376 min
 Delta R.T.: 0.002 min
 Response: 13112
 Conc: 8.53 ng/ml

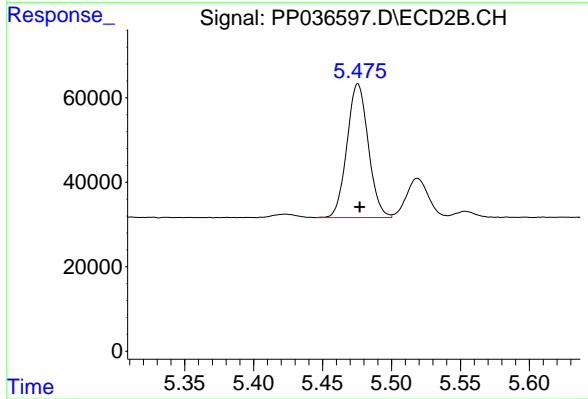
Instrument :
 ECD_P
 ClientSampled :



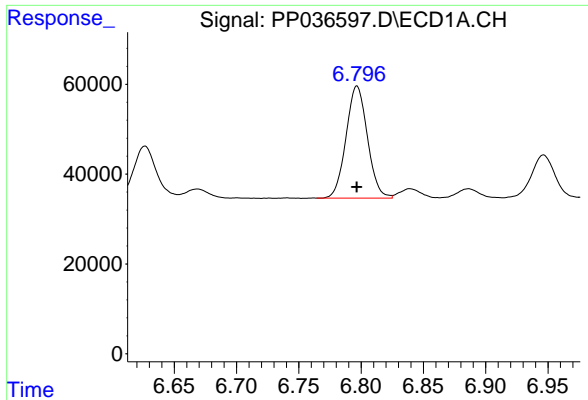
#5 AR-1016-3
 R.T.: 0.000 min
 Exp R.T. : 5.424 min
 Response: 0
 Conc: N.D.



#6 AR-1016-4
 R.T.: 6.480 min
 Delta R.T.: -0.002 min
 Response: 13191
 Conc: 10.26 ng/ml



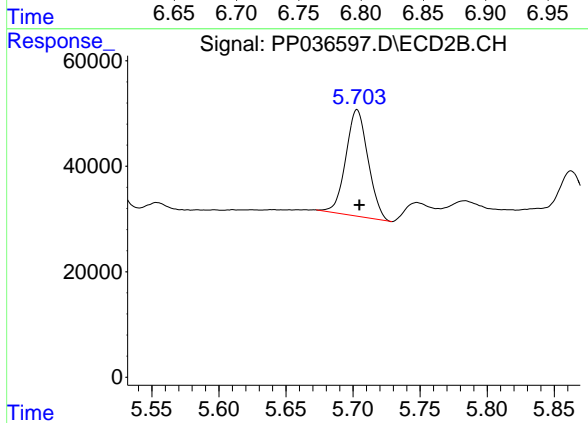
#6 AR-1016-4
 R.T.: 5.476 min
 Delta R.T.: -0.001 min
 Response: 341010
 Conc: 480.38 ng/ml



#7 AR-1016-5

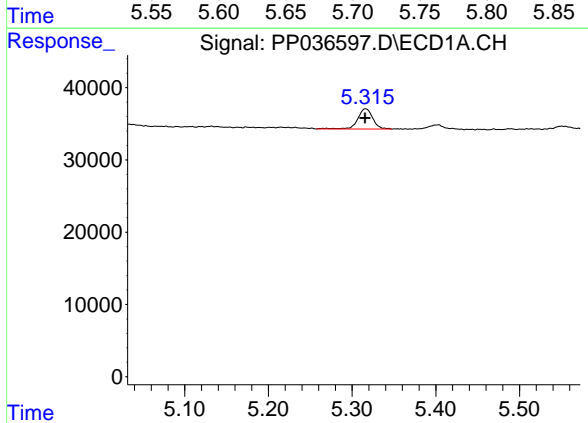
R.T.: 6.797 min
 Delta R.T.: 0.000 min
 Response: 298412
 Conc: 233.31 ng/ml

Instrument :
 ECD_P
 ClientSampleId :



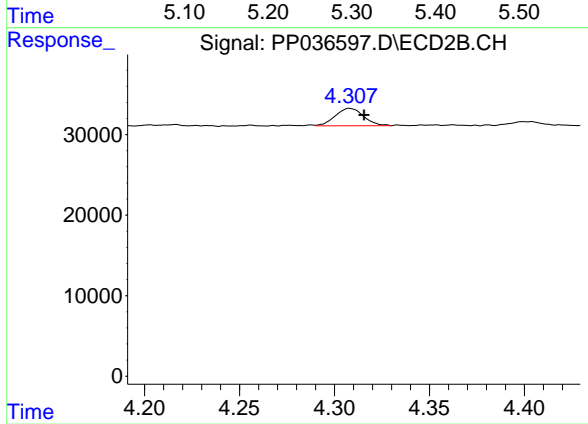
#7 AR-1016-5

R.T.: 5.703 min
 Delta R.T.: -0.002 min
 Response: 232255
 Conc: 256.29 ng/ml



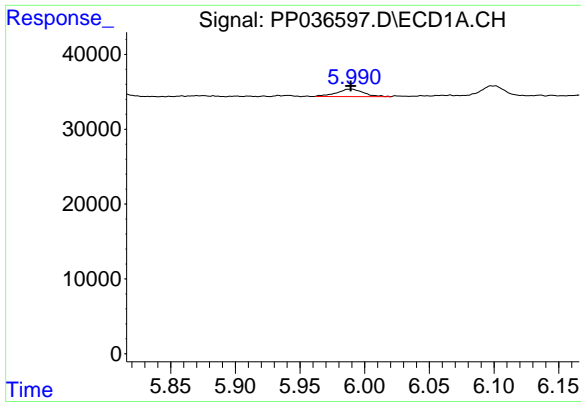
#9 AR-1221-2

R.T.: 5.316 min
 Delta R.T.: 0.000 min
 Response: 35443
 Conc: 82.25 ng/ml



#9 AR-1221-2

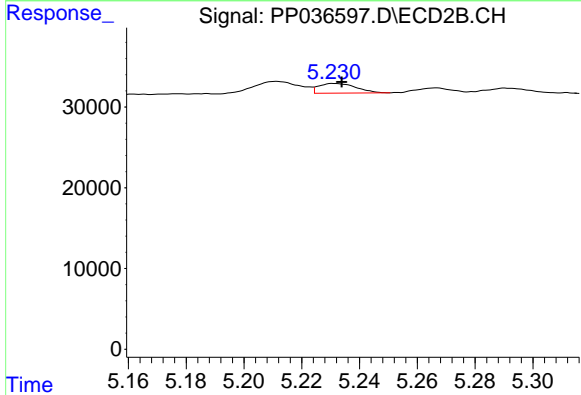
R.T.: 4.308 min
 Delta R.T.: -0.008 min
 Response: 22394
 Conc: 75.03 ng/ml



#12 AR-1232-2

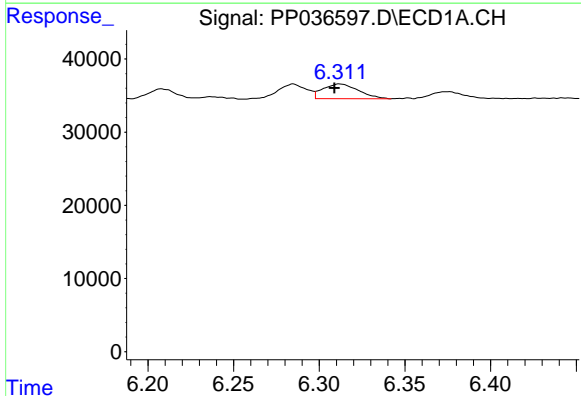
R.T.: 5.990 min
 Delta R.T.: 0.000 min
 Response: 14597
 Conc: 26.54 ng/ml

Instrument :
 ECD_P
 ClientSampleId :



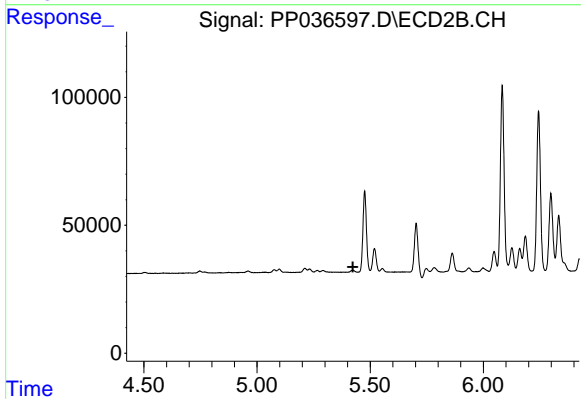
#12 AR-1232-2

R.T.: 5.231 min
 Delta R.T.: -0.003 min
 Response: 10759
 Conc: 16.09 ng/ml



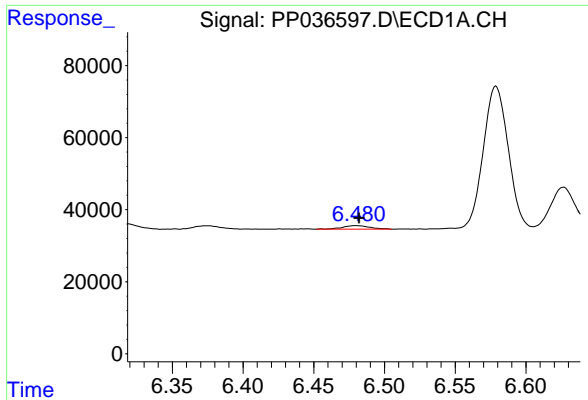
#13 AR-1232-3

R.T.: 6.312 min
 Delta R.T.: 0.003 min
 Response: 29070
 Conc: 28.46 ng/ml



#13 AR-1232-3

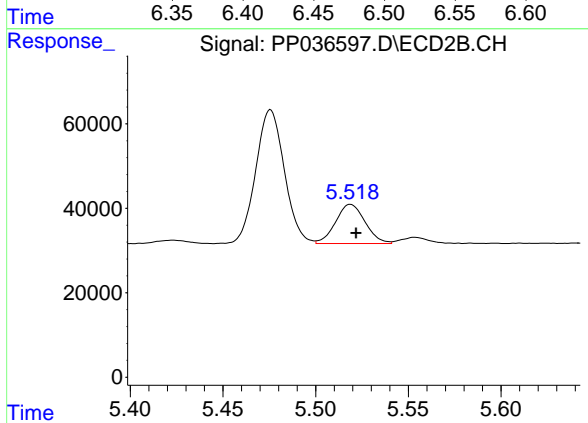
R.T.: 0.000 min
 Exp R.T. : 5.424 min
 Response: 0
 Conc: N.D.



#14 AR-1232-4

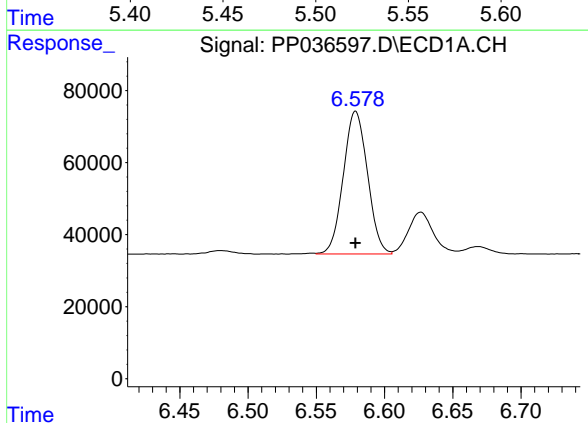
R.T.: 6.480 min
 Delta R.T.: -0.002 min
 Response: 13191
 Conc: 24.44 ng/ml

Instrument :
 ECD_P
 ClientSampled :



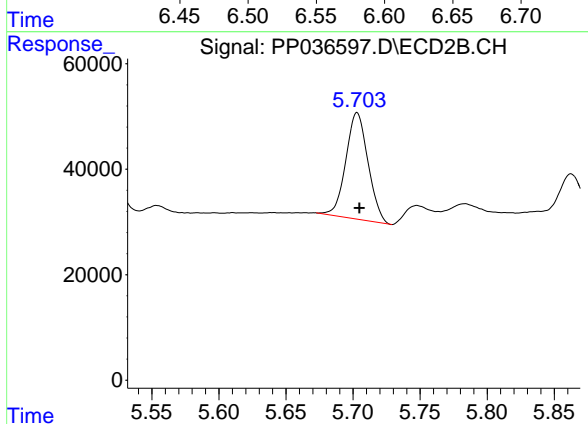
#14 AR-1232-4

R.T.: 5.519 min
 Delta R.T.: -0.003 min
 Response: 102954
 Conc: 328.78 ng/ml



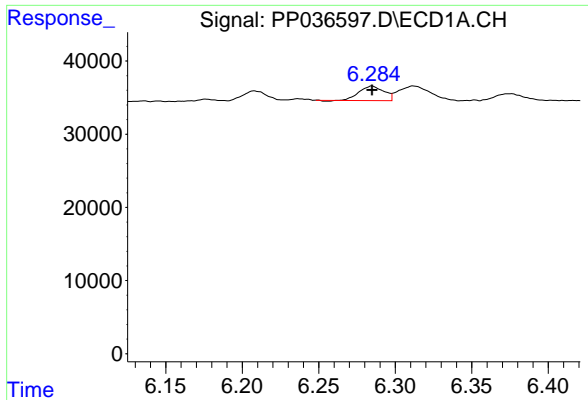
#15 AR-1232-5

R.T.: 6.579 min
 Delta R.T.: 0.000 min
 Response: 488576
 Conc: 1333.08 ng/ml



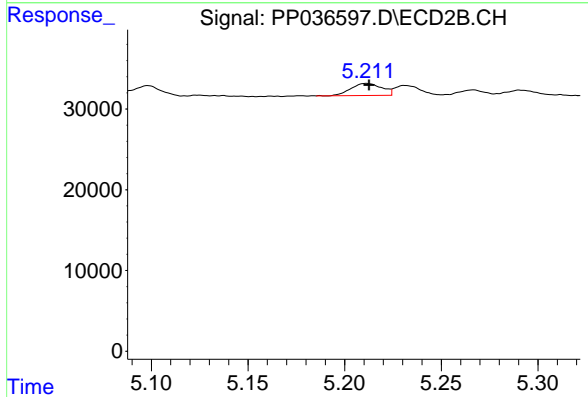
#15 AR-1232-5

R.T.: 5.703 min
 Delta R.T.: -0.002 min
 Response: 232255
 Conc: 652.05 ng/ml

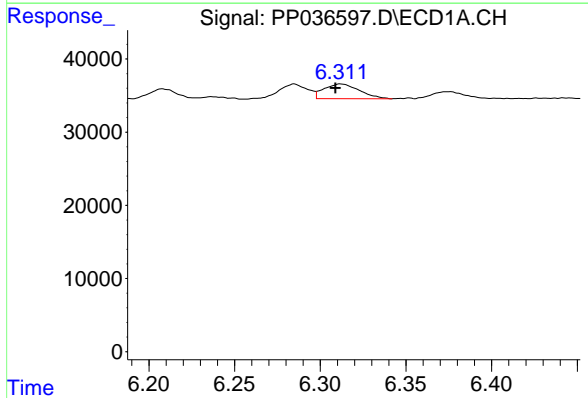


#16 AR-1242-1
 R.T.: 6.285 min
 Delta R.T.: 0.000 min
 Response: 22317
 Conc: 17.40 ng/ml

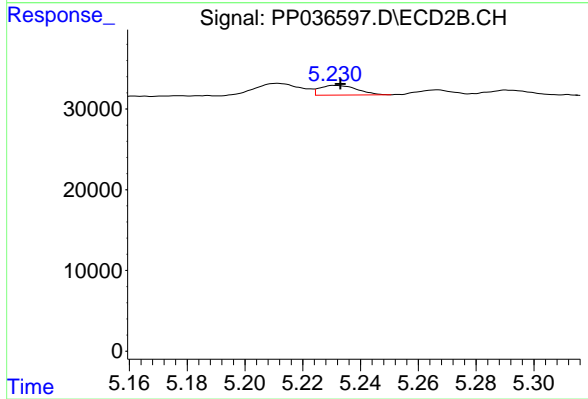
Instrument :
 ECD_P
 ClientSampled :



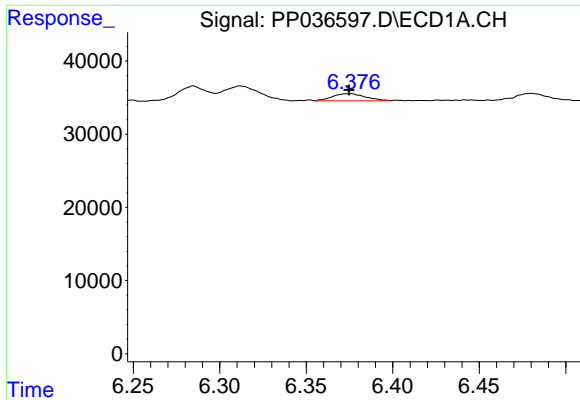
#16 AR-1242-1
 R.T.: 5.211 min
 Delta R.T.: -0.001 min
 Response: 16618
 Conc: 18.67 ng/ml



#17 AR-1242-2
 R.T.: 6.312 min
 Delta R.T.: 0.003 min
 Response: 29070
 Conc: 15.93 ng/ml

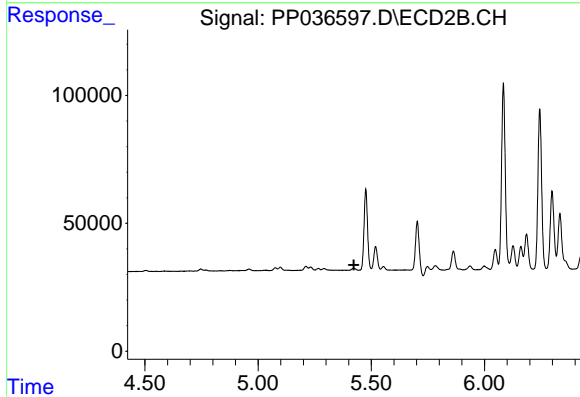


#17 AR-1242-2
 R.T.: 5.231 min
 Delta R.T.: -0.002 min
 Response: 10759
 Conc: 8.82 ng/ml

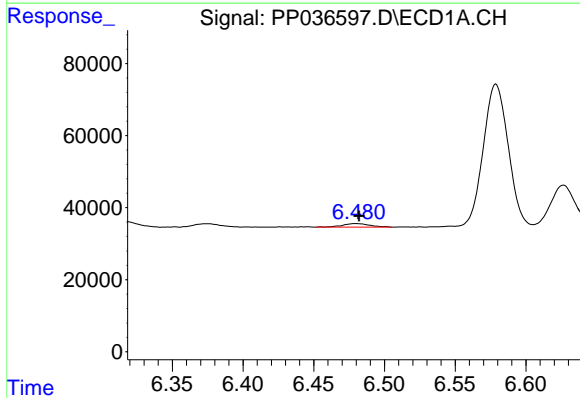


#18 AR-1242-3
 R.T.: 6.376 min
 Delta R.T.: 0.001 min
 Response: 13112
 Conc: 11.18 ng/ml

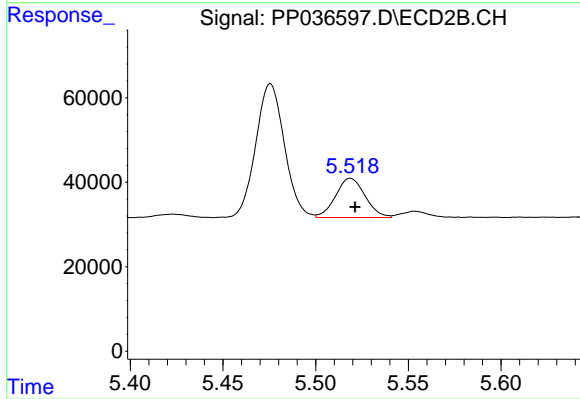
Instrument :
 ECD_P
 ClientSampled :



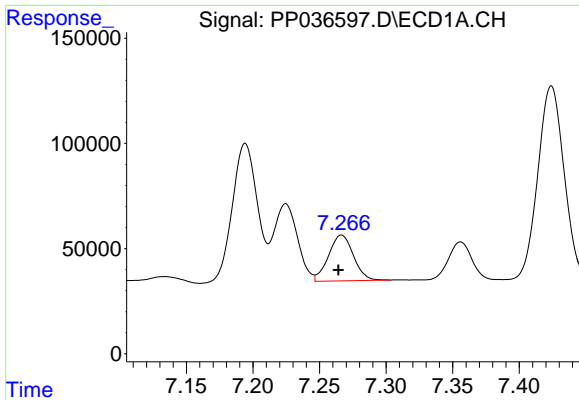
#18 AR-1242-3
 R.T.: 0.000 min
 Exp R.T. : 5.423 min
 Response: 0
 Conc: N.D.



#19 AR-1242-4
 R.T.: 6.480 min
 Delta R.T.: -0.002 min
 Response: 13191
 Conc: 13.63 ng/ml



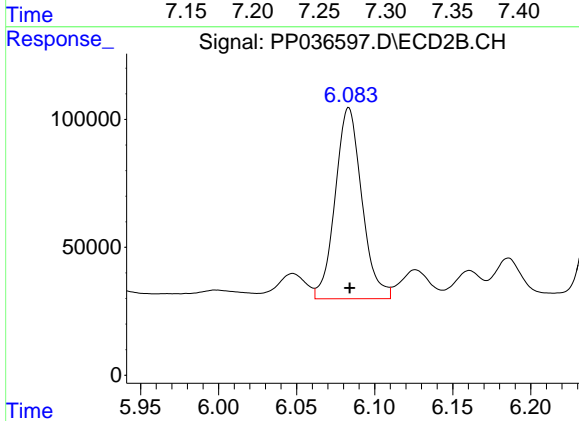
#19 AR-1242-4
 R.T.: 5.519 min
 Delta R.T.: -0.002 min
 Response: 102954
 Conc: 159.02 ng/ml



#20 AR-1242-5

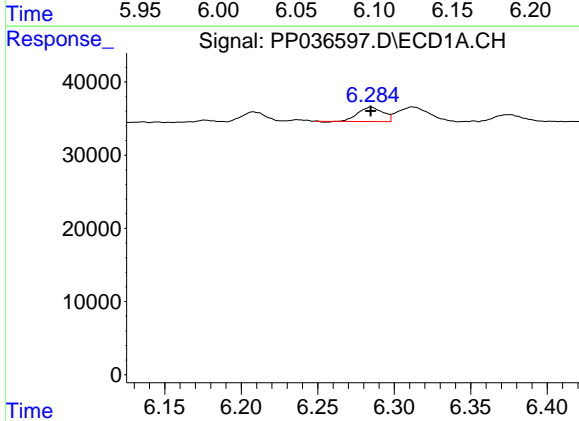
R.T.: 7.267 min
 Delta R.T.: 0.002 min
 Response: 284038
 Conc: 270.03 ng/ml

Instrument :
 ECD_P
 ClientSampled :



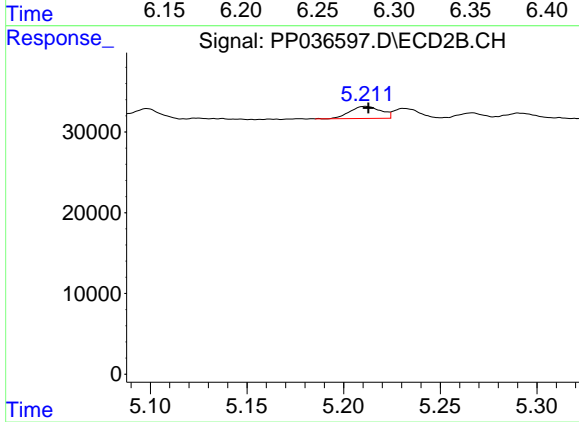
#20 AR-1242-5

R.T.: 6.083 min
 Delta R.T.: 0.000 min
 Response: 888368
 Conc: 1088.82 ng/ml



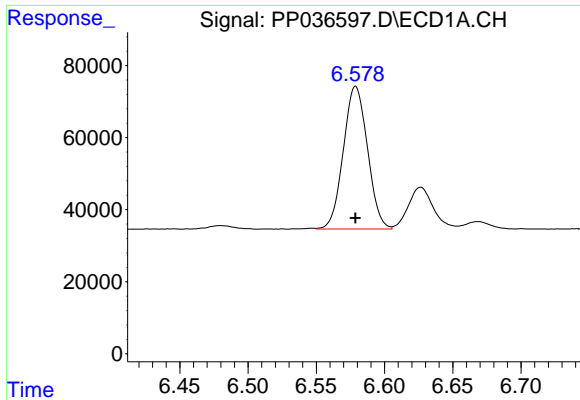
#21 AR-1248-1

R.T.: 6.285 min
 Delta R.T.: 0.000 min
 Response: 22317
 Conc: 22.12 ng/ml



#21 AR-1248-1

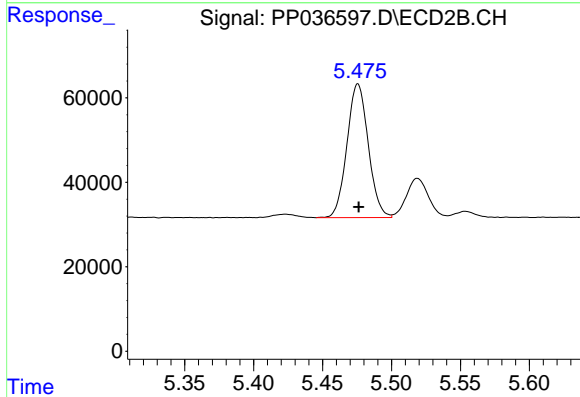
R.T.: 5.211 min
 Delta R.T.: -0.001 min
 Response: 16618
 Conc: 23.85 ng/ml



#22 AR-1248-2

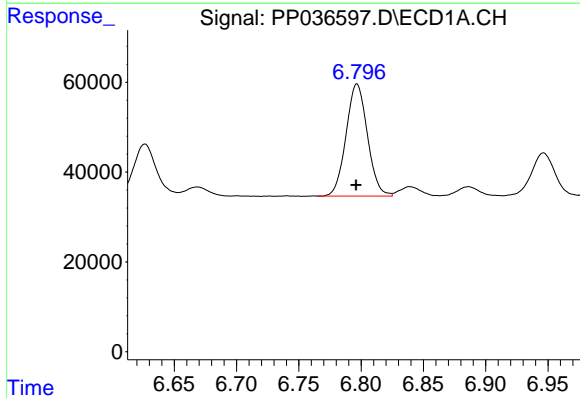
R.T.: 6.579 min
 Delta R.T.: 0.000 min
 Response: 488576
 Conc: 359.76 ng/ml

Instrument :
 ECD_P
 ClientSampled :



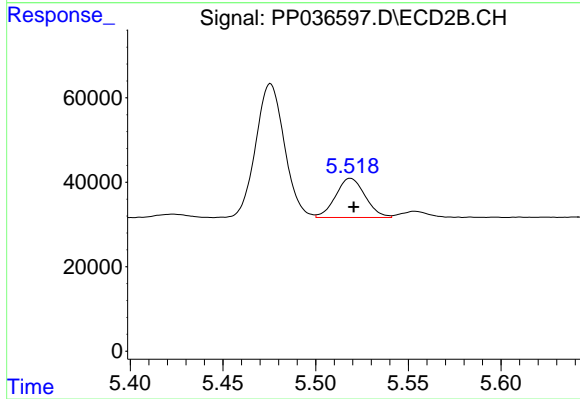
#22 AR-1248-2

R.T.: 5.476 min
 Delta R.T.: 0.000 min
 Response: 341010
 Conc: 360.03 ng/ml



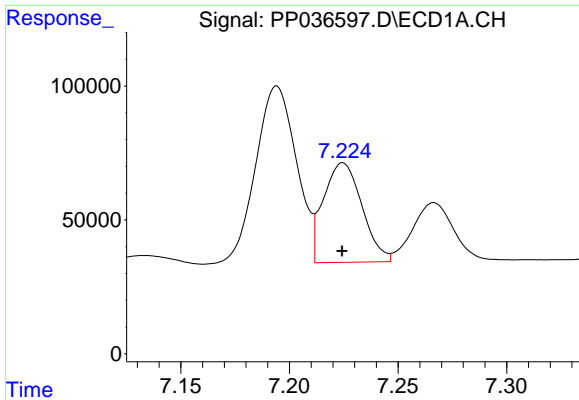
#23 AR-1248-3

R.T.: 6.797 min
 Delta R.T.: 0.000 min
 Response: 298412
 Conc: 183.40 ng/ml



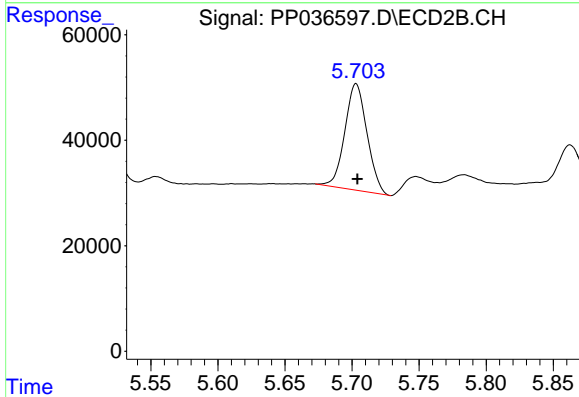
#23 AR-1248-3

R.T.: 5.519 min
 Delta R.T.: -0.002 min
 Response: 102954
 Conc: 104.05 ng/ml

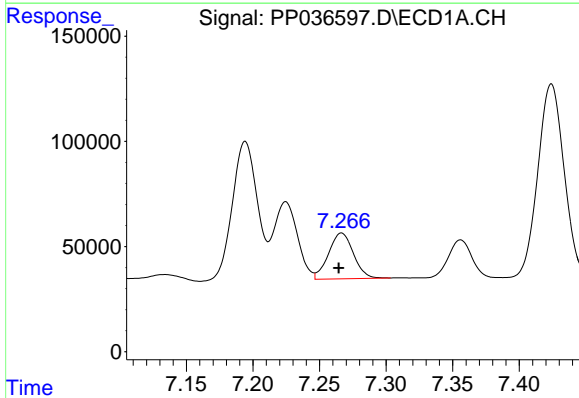


#24 AR-1248-4
 R.T.: 7.225 min
 Delta R.T.: 0.000 min
 Response: 458278
 Conc: 251.01 ng/ml

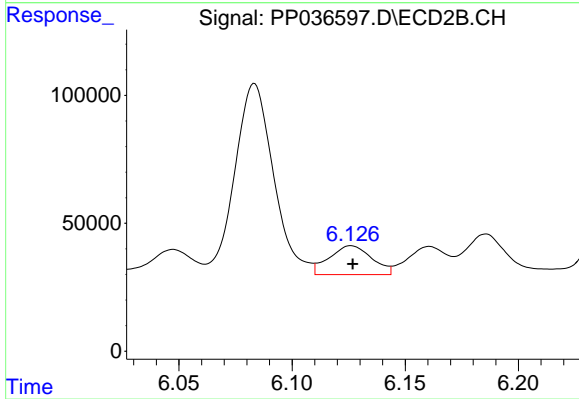
Instrument :
 ECD_P
 ClientSampleId :



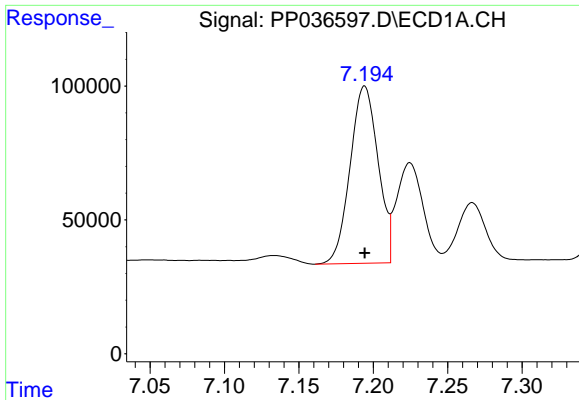
#24 AR-1248-4
 R.T.: 5.703 min
 Delta R.T.: -0.001 min
 Response: 232255
 Conc: 198.55 ng/ml



#25 AR-1248-5
 R.T.: 7.267 min
 Delta R.T.: 0.002 min
 Response: 284038
 Conc: 157.53 ng/ml



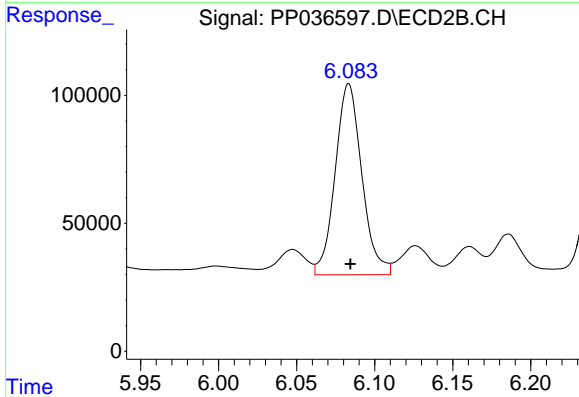
#25 AR-1248-5
 R.T.: 6.126 min
 Delta R.T.: 0.000 min
 Response: 147903
 Conc: 124.69 ng/ml



#26 AR-1254-1

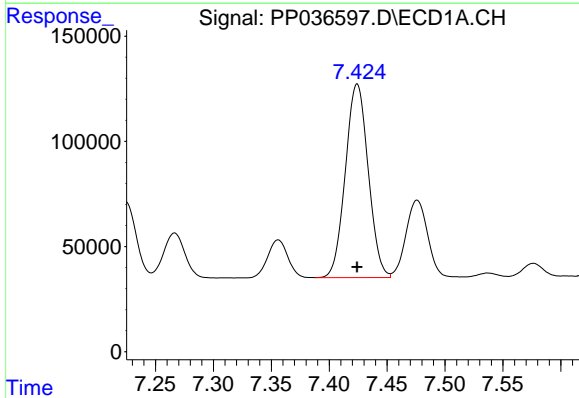
R.T.: 7.194 min
 Delta R.T.: 0.000 min
 Response: 865342
 Conc: 492.05 ng/ml

Instrument :
 ECD_P
 ClientSampled :



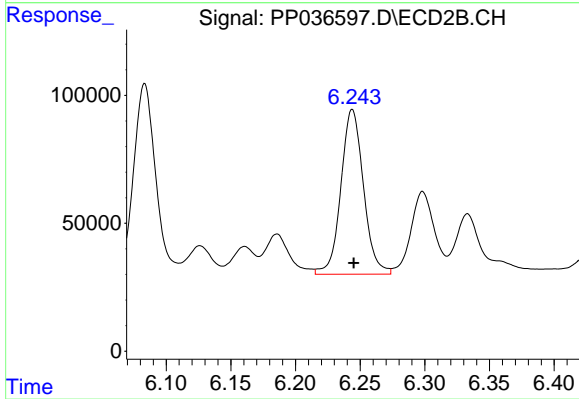
#26 AR-1254-1

R.T.: 6.083 min
 Delta R.T.: 0.000 min
 Response: 888368
 Conc: 524.31 ng/ml



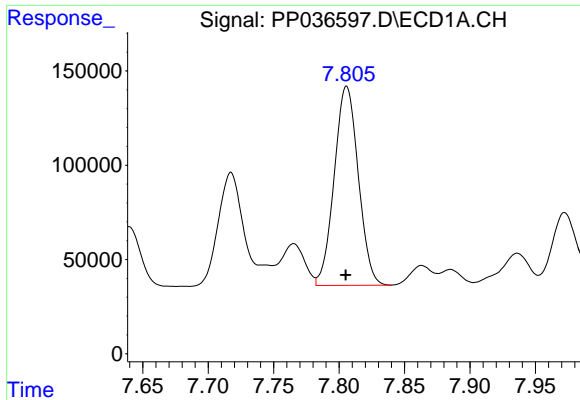
#27 AR-1254-2

R.T.: 7.424 min
 Delta R.T.: 0.000 min
 Response: 1263786
 Conc: 467.08 ng/ml



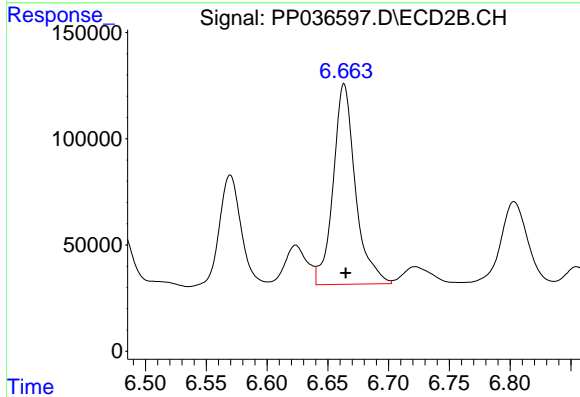
#27 AR-1254-2

R.T.: 6.244 min
 Delta R.T.: -0.001 min
 Response: 784123
 Conc: 527.18 ng/ml

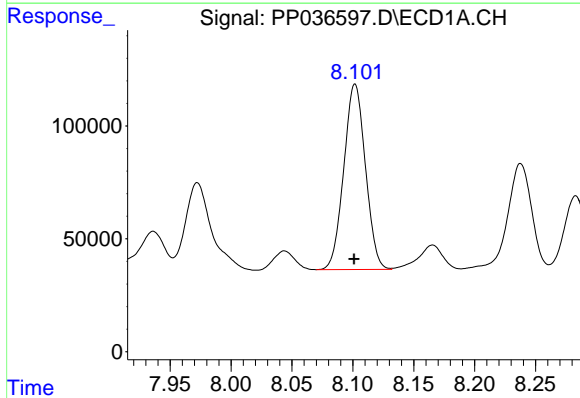


#28 AR-1254-3
 R.T.: 7.806 min
 Delta R.T.: 0.000 min
 Response: 1353993
 Conc: 457.11 ng/ml

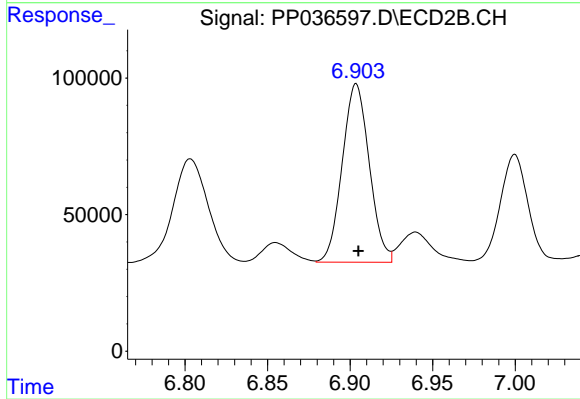
Instrument :
 ECD_P
 ClientSampled :



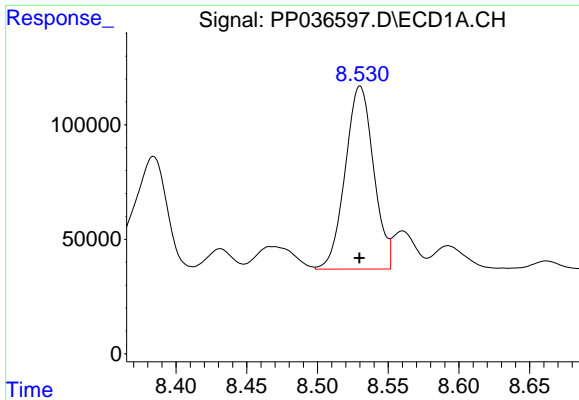
#28 AR-1254-3
 R.T.: 6.663 min
 Delta R.T.: -0.001 min
 Response: 1201925
 Conc: 494.38 ng/ml



#29 AR-1254-4
 R.T.: 8.102 min
 Delta R.T.: 0.000 min
 Response: 1016779
 Conc: 462.52 ng/ml



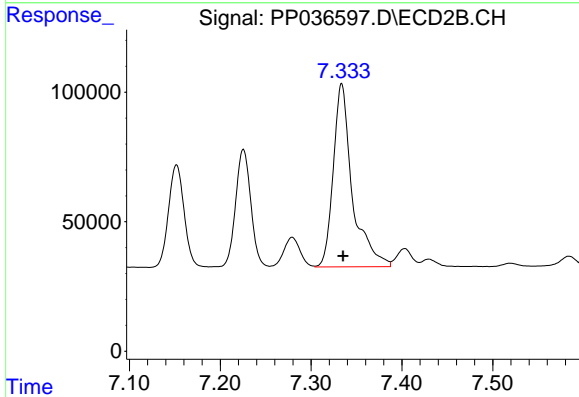
#29 AR-1254-4
 R.T.: 6.904 min
 Delta R.T.: -0.001 min
 Response: 744516
 Conc: 481.12 ng/ml



#30 AR-1254-5

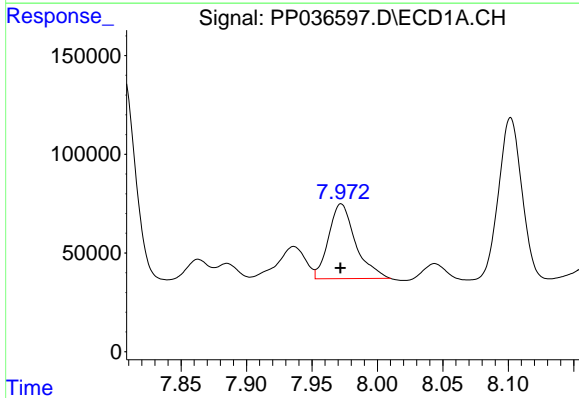
R.T.: 8.530 min
 Delta R.T.: 0.000 min
 Response: 1118873
 Conc: 470.48 ng/ml

Instrument :
 ECD_P
 ClientSampled :



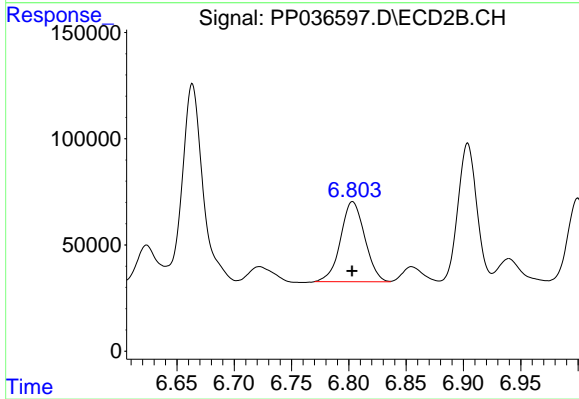
#30 AR-1254-5

R.T.: 7.334 min
 Delta R.T.: -0.002 min
 Response: 1031343
 Conc: 479.63 ng/ml



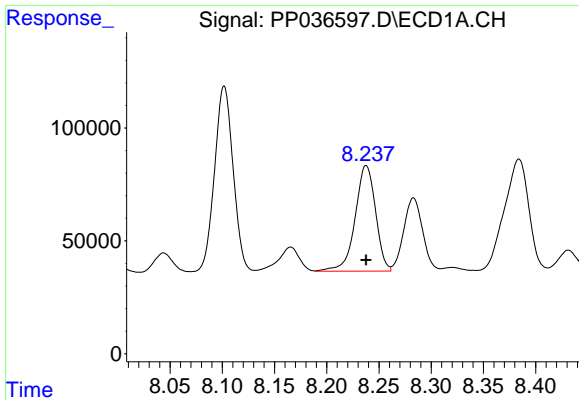
#31 AR-1260-1

R.T.: 7.972 min
 Delta R.T.: 0.000 min
 Response: 544342
 Conc: 250.79 ng/ml



#31 AR-1260-1

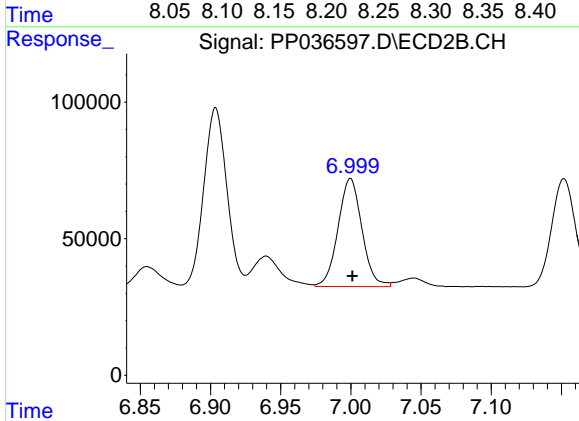
R.T.: 6.803 min
 Delta R.T.: 0.000 min
 Response: 554786
 Conc: 344.58 ng/ml



#32 AR-1260-2

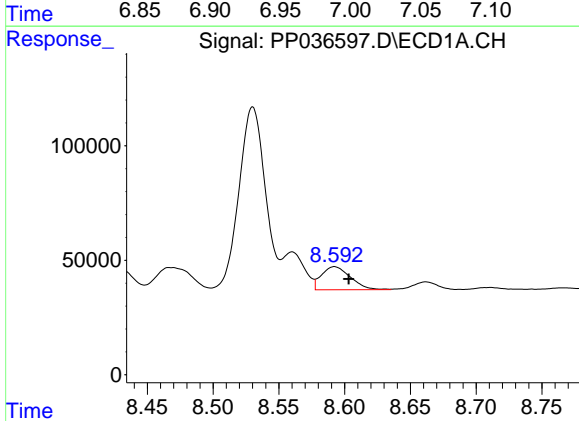
R.T.: 8.238 min
 Delta R.T.: 0.000 min
 Response: 637439
 Conc: 248.71 ng/ml

Instrument :
 ECD_P
 ClientSampled :



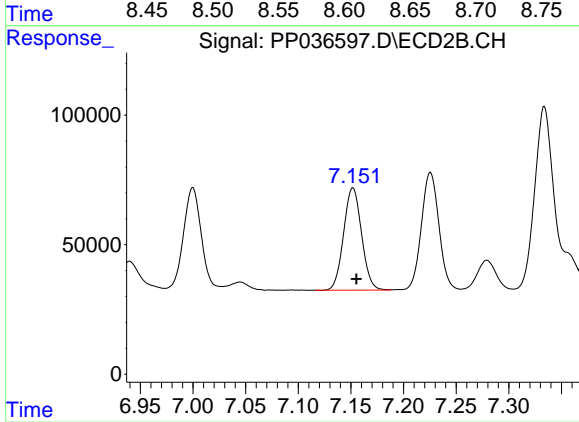
#32 AR-1260-2

R.T.: 7.000 min
 Delta R.T.: -0.001 min
 Response: 468088
 Conc: 241.37 ng/ml



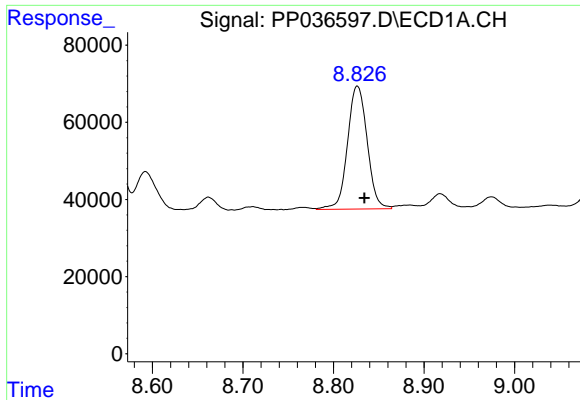
#33 AR-1260-3

R.T.: 8.592 min
 Delta R.T.: -0.011 min
 Response: 155419
 Conc: 77.54 ng/ml



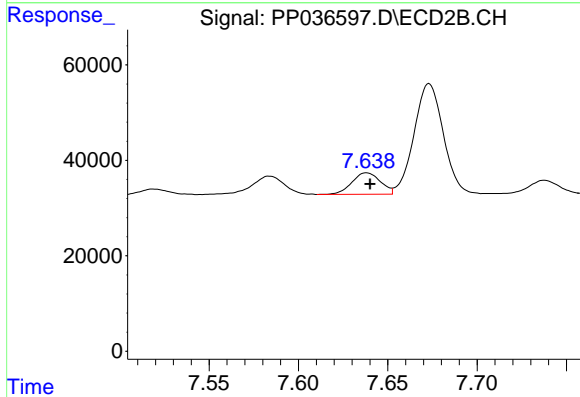
#33 AR-1260-3

R.T.: 7.152 min
 Delta R.T.: -0.003 min
 Response: 469926
 Conc: 258.39 ng/ml

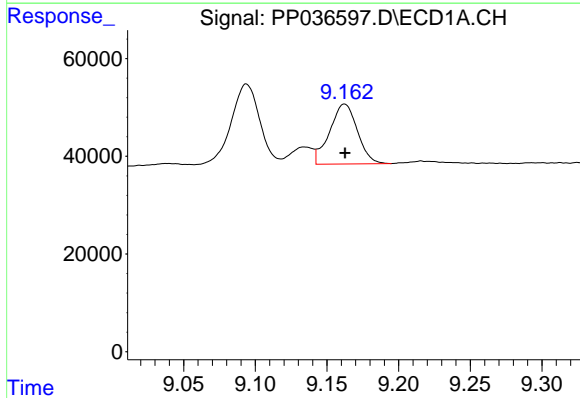


#34 AR-1260-4
 R.T.: 8.826 min
 Delta R.T.: -0.008 min
 Response: 481972
 Conc: 203.43 ng/ml

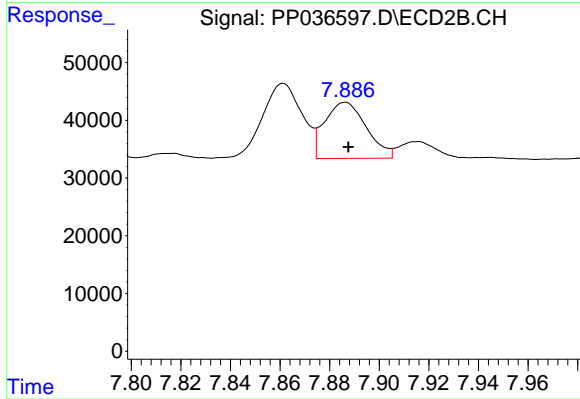
Instrument :
 ECD_P
 ClientSampled :



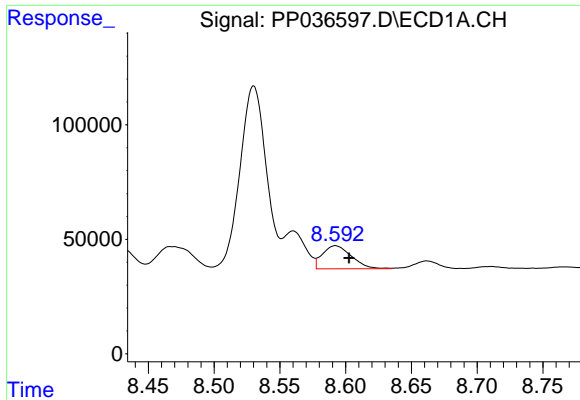
#34 AR-1260-4
 R.T.: 7.638 min
 Delta R.T.: -0.002 min
 Response: 50205
 Conc: 32.37 ng/ml



#35 AR-1260-5
 R.T.: 9.162 min
 Delta R.T.: 0.000 min
 Response: 165532
 Conc: 37.10 ng/ml

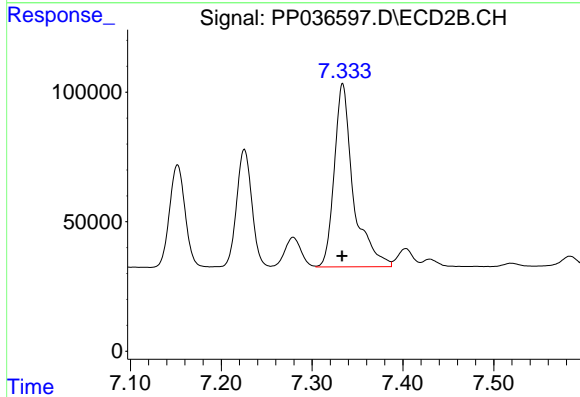


#35 AR-1260-5
 R.T.: 7.886 min
 Delta R.T.: -0.001 min
 Response: 113425
 Conc: 30.87 ng/ml

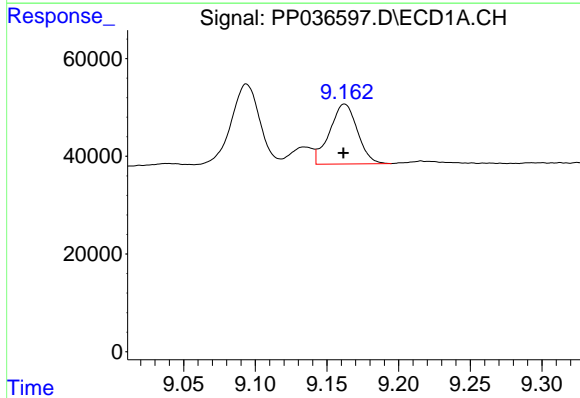


#36 AR-1262-1
 R.T.: 8.592 min
 Delta R.T.: -0.010 min
 Response: 155419
 Conc: 54.54 ng/ml

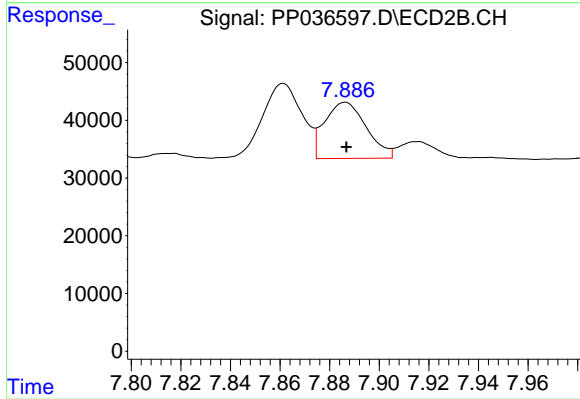
Instrument :
 ECD_P
 ClientSampled :



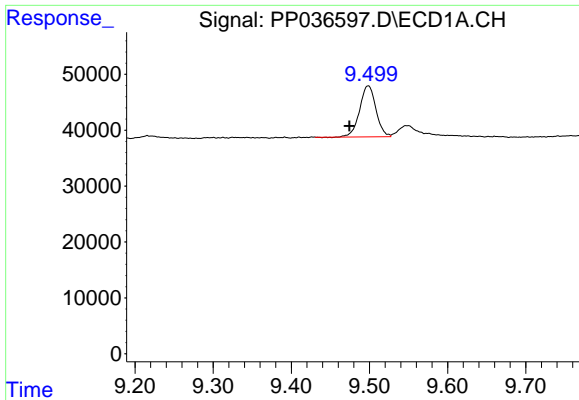
#36 AR-1262-1
 R.T.: 7.334 min
 Delta R.T.: 0.000 min
 Response: 1031343
 Conc: 865.30 ng/ml



#37 AR-1262-2
 R.T.: 9.162 min
 Delta R.T.: 0.000 min
 Response: 165532
 Conc: 32.58 ng/ml



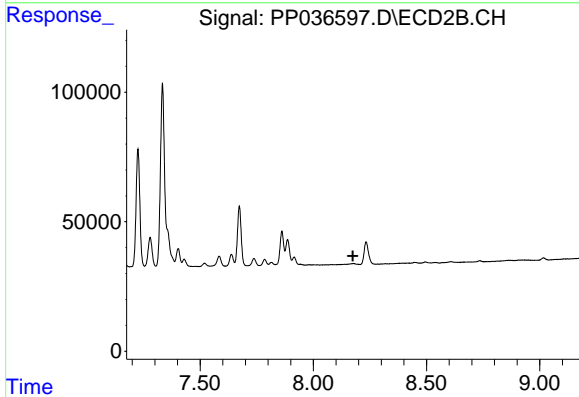
#37 AR-1262-2
 R.T.: 7.886 min
 Delta R.T.: 0.000 min
 Response: 113425
 Conc: 28.93 ng/ml



#38 AR-1262-3

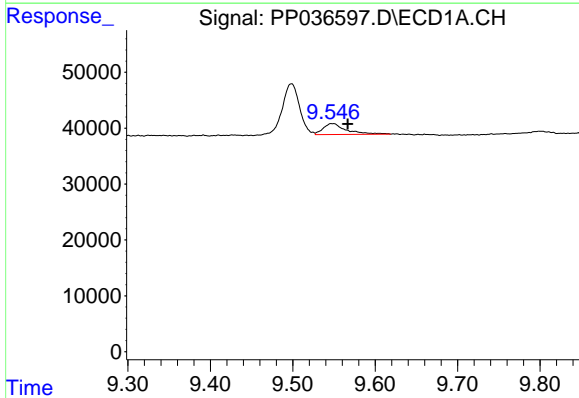
R.T.: 9.498 min
 Delta R.T.: 0.024 min
 Response: 132467
 Conc: 35.76 ng/ml

Instrument :
 ECD_P
 ClientSampled :



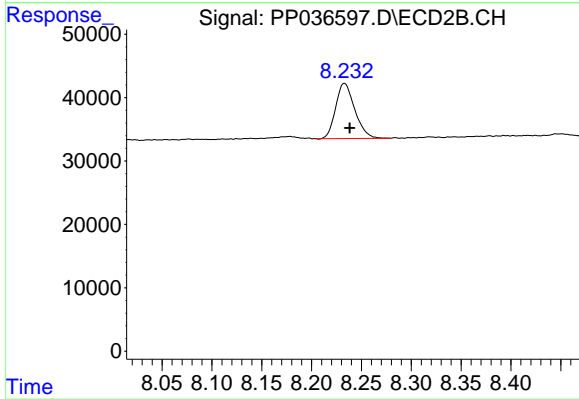
#38 AR-1262-3

R.T.: 0.000 min
 Exp R.T. : 8.175 min
 Response: 0
 Conc: N.D.



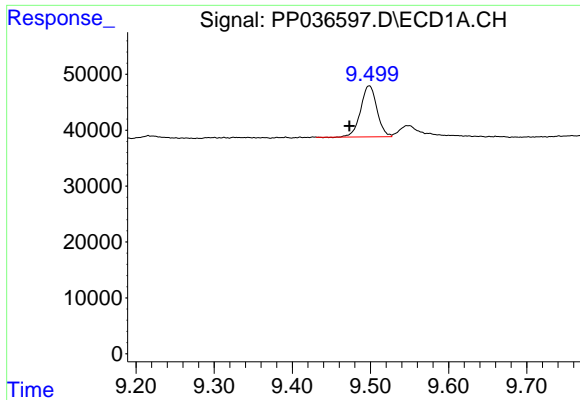
#39 AR-1262-4

R.T.: 9.548 min
 Delta R.T.: -0.019 min
 Response: 38150
 Conc: 13.28 ng/ml



#39 AR-1262-4

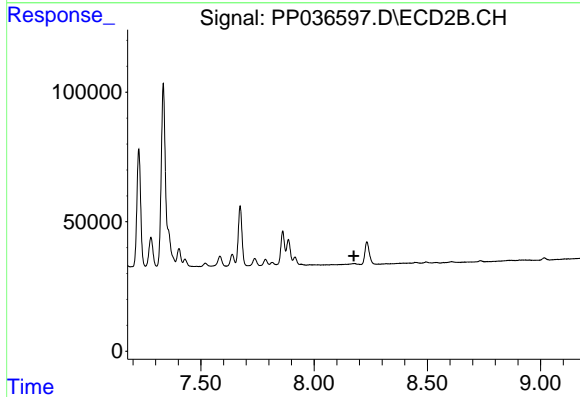
R.T.: 8.233 min
 Delta R.T.: -0.005 min
 Response: 116501
 Conc: 39.14 ng/ml



#41 AR-1268-1

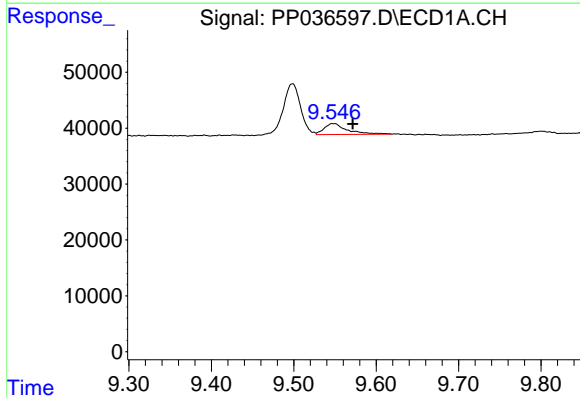
R.T.: 9.498 min
 Delta R.T.: 0.025 min
 Response: 132467
 Conc: 22.08 ng/ml

Instrument :
 ECD_P
 ClientSampled :



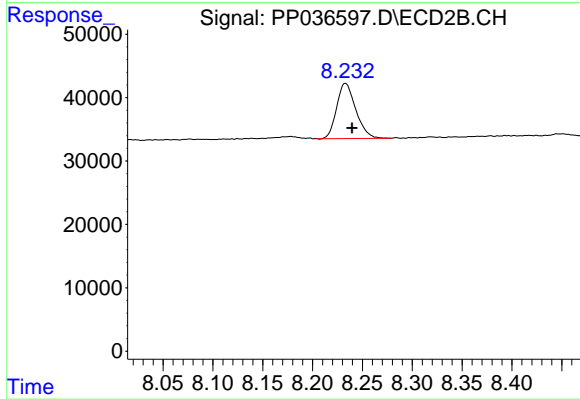
#41 AR-1268-1

R.T.: 0.000 min
 Exp R.T. : 8.175 min
 Response: 0
 Conc: N.D.



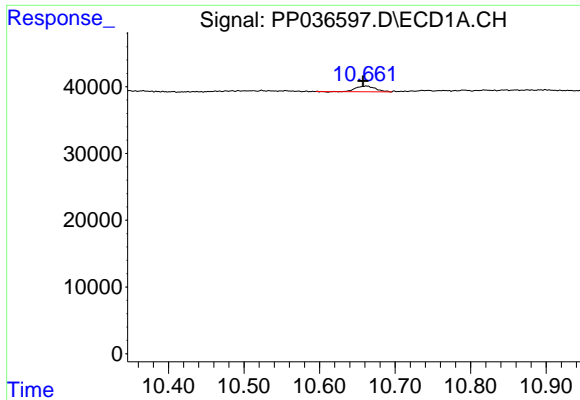
#42 AR-1268-2

R.T.: 9.548 min
 Delta R.T.: -0.023 min
 Response: 38150
 Conc: 6.69 ng/ml



#42 AR-1268-2

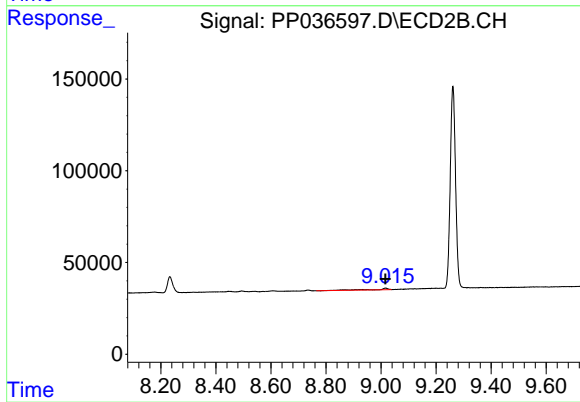
R.T.: 8.233 min
 Delta R.T.: -0.007 min
 Response: 116501
 Conc: 27.01 ng/ml



#45 AR-1268-5

R.T.: 10.662 min
Delta R.T.: 0.005 min
Response: 15327
Conc: 1.00 ng/ml

Instrument :
ECD_P
ClientSampled :



#45 AR-1268-5

R.T.: 9.016 min
Delta R.T.: 0.000 min
Response: 28918
Conc: 2.45 ng/ml