

Data Path : Z:\pestpcbsrv\HPCHEM1\ECD_P\Data\PP061824\
 Data File : PP065760.D
 Signal(s) : Signal #1: ECD1A.ch Signal #2: ECD2B.ch
 Acq On : 18 Jun 2024 16:51
 Operator : YP\AJ
 Sample : PB161533BL
 Misc :
 ALS Vial : 7 Sample Multiplier: 1

Instrument :
 ECD_P
ClientSampleId :
 PB161533BL

Integration File signal 1: autoint1.e
 Integration File signal 2: autoint2.e
 Quant Time: Jun 18 22:55:55 2024
 Quant Method : Z:\pestpcbsrv\HPCHEM1\ECD_P\methods\PP060524.M
 Quant Title : GC EXTRACTABLES
 QLast Update : Thu Jun 06 05:25:59 2024
 Response via : Initial Calibration
 Integrator: ChemStation

Volume Inj. : 2 µl
 Signal #1 Phase : ZB-MR1 Signal #2 Phase: ZB-MR2
 Signal #1 Info : 30Mx0.32mmx 0.50µ Signal #2 Info : 30M x 0.32mm x 0.25µm

Compound	RT#1	RT#2	Resp#1	Resp#2	ng/ml	ng/ml

System Monitoring Compounds						
1) SA Tetrachlo...	4.828	4.068	31632833	45859982	16.676	16.424
2) SA Decachlor...	10.841	9.248	34508140	24327127	17.545	16.513

Target Compounds

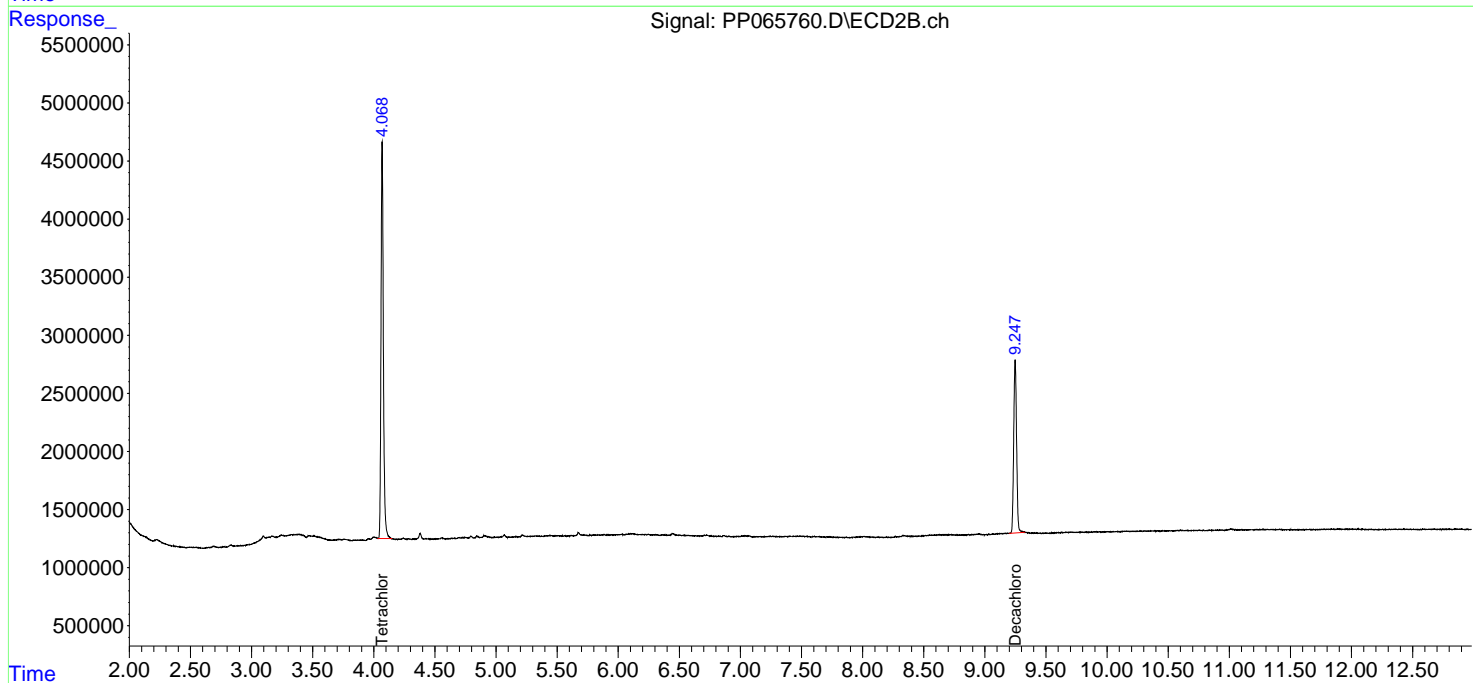
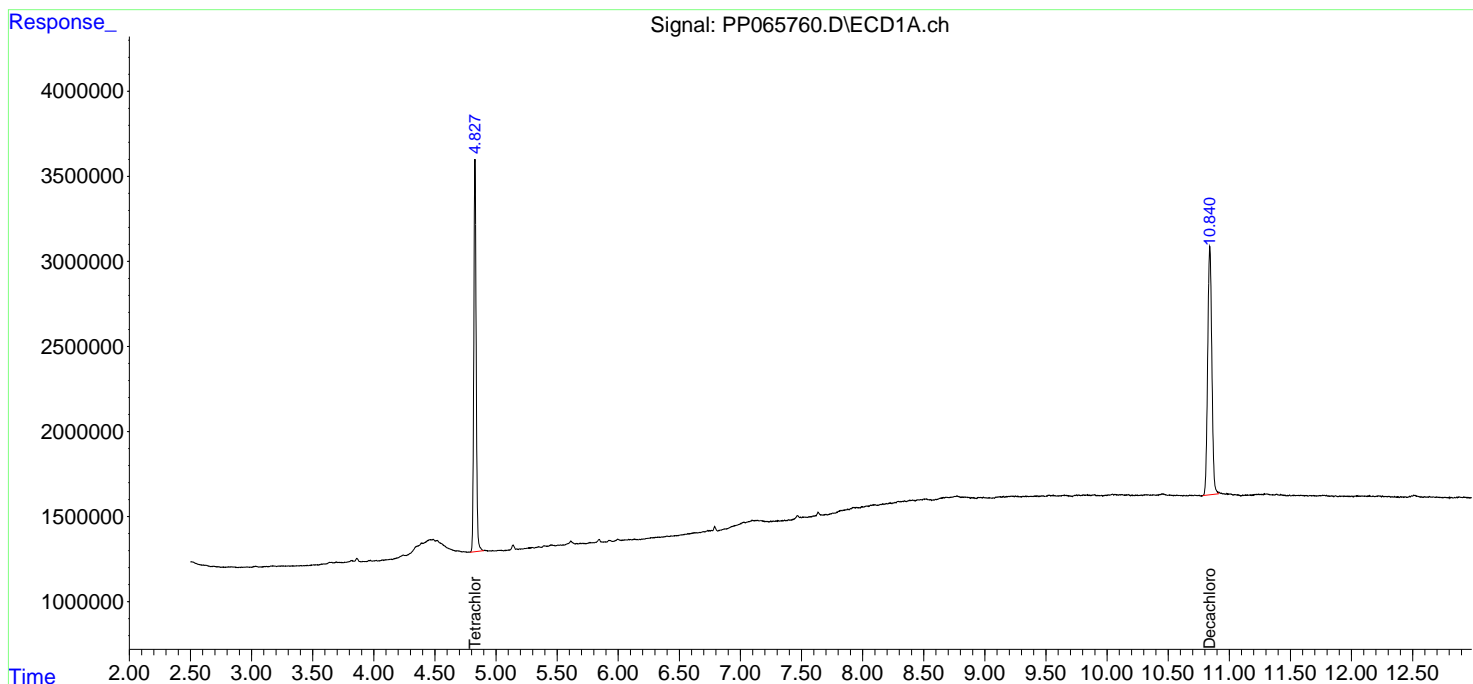
 (f)=RT Delta > 1/2 Window (#)=Amounts differ by > 25% (m)=manual int.

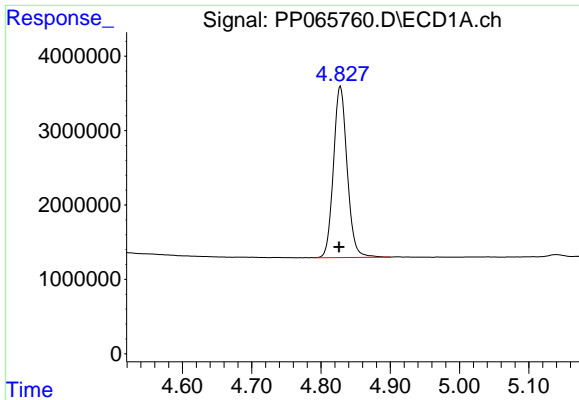
Data Path : Z:\pestpcbsrv\HPCHEM1\ECD_P\Data\PP061824\
 Data File : PP065760.D
 Signal(s) : Signal #1: ECD1A.ch Signal #2: ECD2B.ch
 Acq On : 18 Jun 2024 16:51
 Operator : YP\AJ
 Sample : PB161533BL
 Misc :
 ALS Vial : 7 Sample Multiplier: 1

Instrument :
 ECD_P
 ClientSampleId :
 PB161533BL

Integration File signal 1: autoint1.e
 Integration File signal 2: autoint2.e
 Quant Time: Jun 18 22:55:55 2024
 Quant Method : Z:\pestpcbsrv\HPCHEM1\ECD_P\methods\PP060524.M
 Quant Title : GC EXTRACTABLES
 QLast Update : Thu Jun 06 05:25:59 2024
 Response via : Initial Calibration
 Integrator: ChemStation

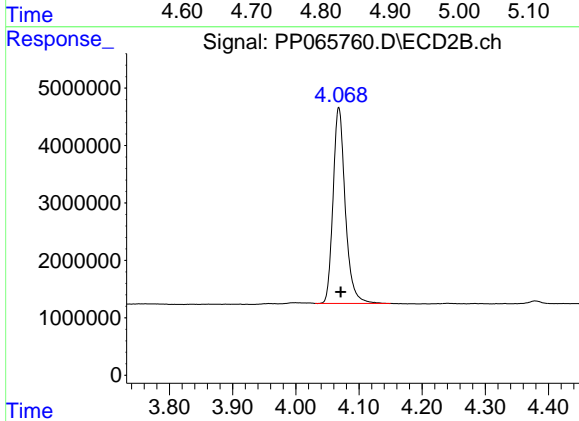
Volume Inj. : 2 µl
 Signal #1 Phase : ZB-MR1 Signal #2 Phase: ZB-MR2
 Signal #1 Info : 30Mx0.32mmx 0.50µ Signal #2 Info : 30M x 0.32mm x 0.25µm



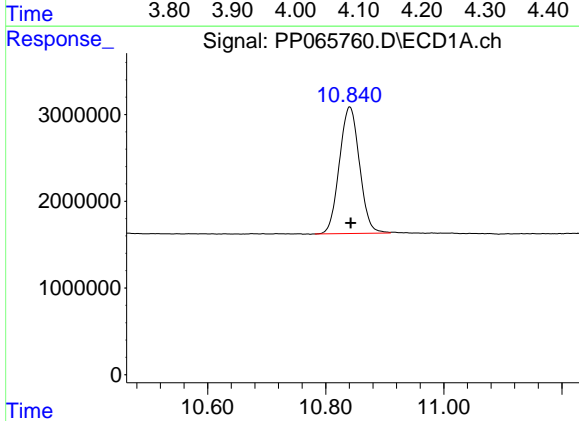


#1 Tetrachloro-m-xylene
 R.T.: 4.828 min
 Delta R.T.: 0.002 min
 Response: 31632833
 Conc: 16.68 ng/ml

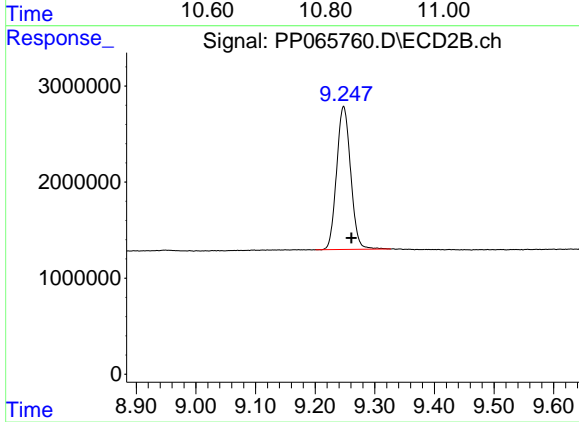
Instrument :
 ECD_P
 ClientSampleId :
 PB161533BL



#1 Tetrachloro-m-xylene
 R.T.: 4.068 min
 Delta R.T.: -0.003 min
 Response: 45859982
 Conc: 16.42 ng/ml



#2 Decachlorobiphenyl
 R.T.: 10.841 min
 Delta R.T.: -0.002 min
 Response: 34508140
 Conc: 17.54 ng/ml



#2 Decachlorobiphenyl
 R.T.: 9.248 min
 Delta R.T.: -0.013 min
 Response: 24327127
 Conc: 16.51 ng/ml