

Data Path : Z:\pestpcbsrv\HPCHEM1\ECD\_P\Data\PP061825\  
 Data File : PP073034.D  
 Signal(s) : Signal #1: ECD1A.ch Signal #2: ECD2B.ch  
 Acq On : 18 Jun 2025 13:48  
 Operator : YP\AJ  
 Sample : Q2126-01  
 Misc : AR1254 LOD 25 PPB  
 ALS Vial : 13 Sample Multiplier: 1

**Instrument :**  
 ECD\_P  
**ClientSampleId :**  
 LOD-MDL-SOIL-03-QT2-2025

Integration File signal 1: autoint1.e  
 Integration File signal 2: autoint2.e  
 Quant Time: Jun 19 01:34:48 2025  
 Quant Method : Z:\pestpcbsrv\HPCHEM1\ECD\_P\methods\PP061725.M  
 Quant Title : GC EXTRACTABLES  
 QLast Update : Wed Jun 18 08:17:15 2025  
 Response via : Initial Calibration  
 Integrator: ChemStation

Volume Inj. : 2 µl  
 Signal #1 Phase : ZB-MR1 Signal #2 Phase: ZB-MR2  
 Signal #1 Info : 30Mx0.32mmx 0.50µ Signal #2 Info : 30M x 0.32mm x 0.25µm

Compound	RT#1	RT#2	Resp#1	Resp#2	ng/ml	ng/ml
-----						
System Monitoring Compounds						
1) SA Tetrachlo...	4.495	3.788	41990188	35499575	19.893	19.702
2) SA Decachlor...	10.186	8.798	39201997	27842015	22.940	20.860
Target Compounds						
26) L6 AR-1254-1	6.494	5.669	2522225	2734938	29.964	24.942
27) L6 AR-1254-2	6.710	5.817	3236098	2531108	25.806	26.771
28) L6 AR-1254-3	7.073	6.219	3208533	3807607	24.453	25.806
29) L6 AR-1254-4	7.355	6.448	2789417	3227510	23.287	33.239 #
30) L6 AR-1254-5	7.772	6.864	2338666	3175282	20.469	24.432
-----						

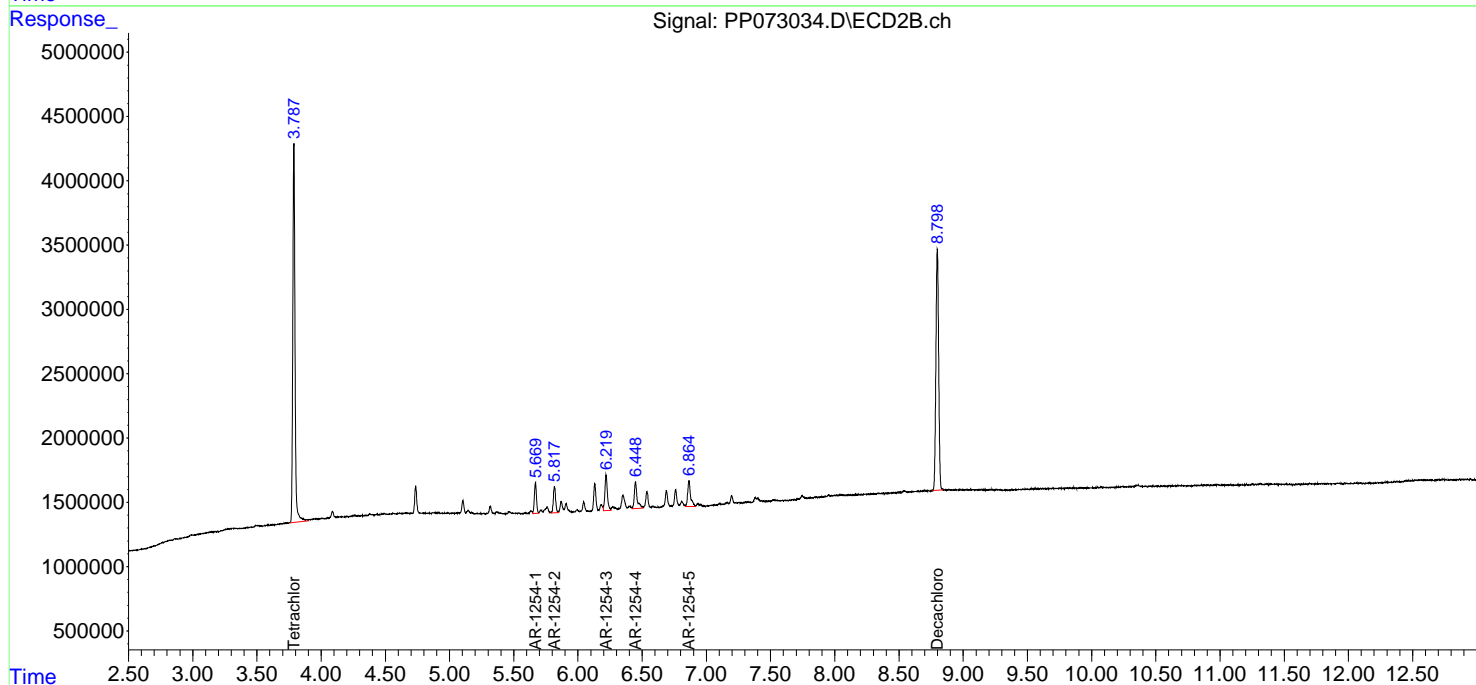
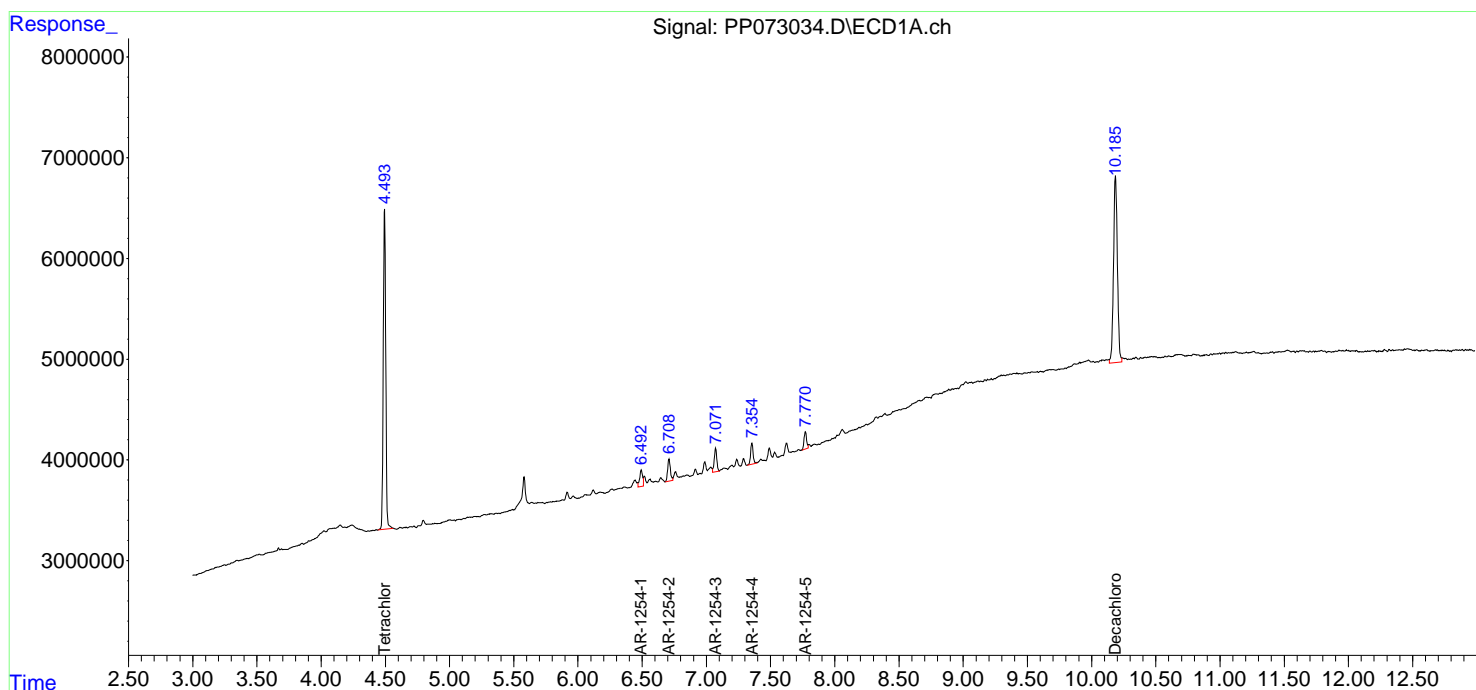
(f)=RT Delta > 1/2 Window (#)=Amounts differ by > 25% (m)=manual int.

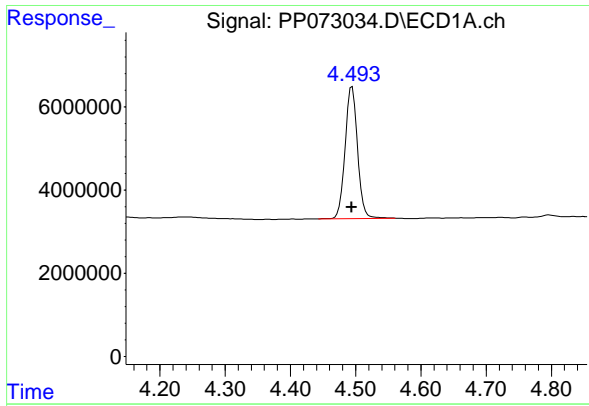
Data Path : Z:\pestpcbsrv\HPCHEM1\ECD\_P\Data\PP061825\  
Data File : PP073034.D  
Signal(s) : Signal #1: ECD1A.ch Signal #2: ECD2B.ch  
Acq On : 18 Jun 2025 13:48  
Operator : YP\AJ  
Sample : Q2126-01  
Misc : AR1254 LOD 25 PPB  
ALS Vial : 13 Sample Multiplier: 1

Instrument :  
ECD\_P  
ClientSampleId :  
LOD-MDL-SOIL-03-QT2-2025

Integration File signal 1: autoint1.e  
Integration File signal 2: autoint2.e  
Quant Time: Jun 19 01:34:48 2025  
Quant Method : Z:\pestpcbsrv\HPCHEM1\ECD\_P\methods\PP061725.M  
Quant Title : GC EXTRACTABLES  
QLast Update : Wed Jun 18 08:17:15 2025  
Response via : Initial Calibration  
Integrator: ChemStation

Volume Inj. : 2 µl  
Signal #1 Phase : ZB-MR1 Signal #2 Phase: ZB-MR2  
Signal #1 Info : 30Mx0.32mmx 0.50µm Signal #2 Info : 30M x 0.32mm x 0.25µm

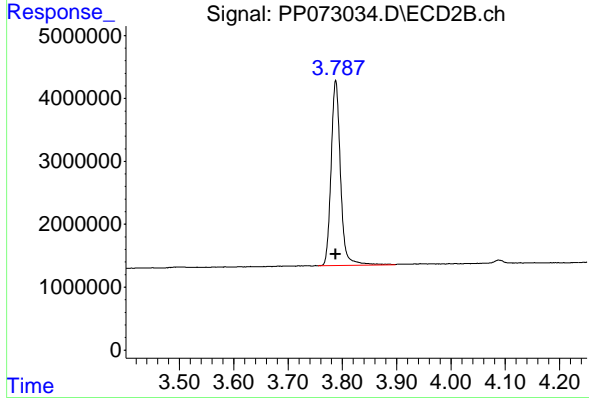




#1 Tetrachloro-m-xylene

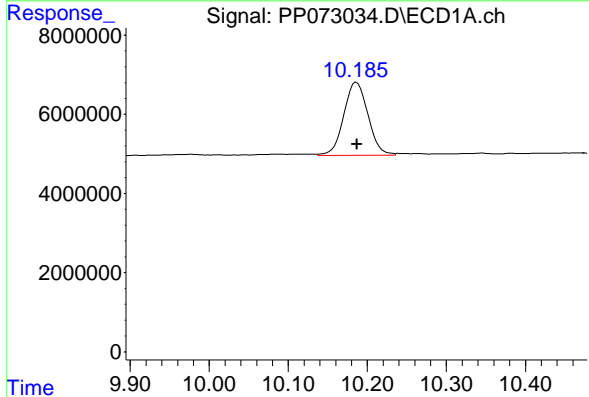
R.T.: 4.495 min  
 Delta R.T.: 0.000 min  
 Response: 41990188  
 Conc: 19.89 ng/ml

Instrument : ECD\_P  
 ClientSampleId : LOD-MDL-SOIL-03-QT2-2025



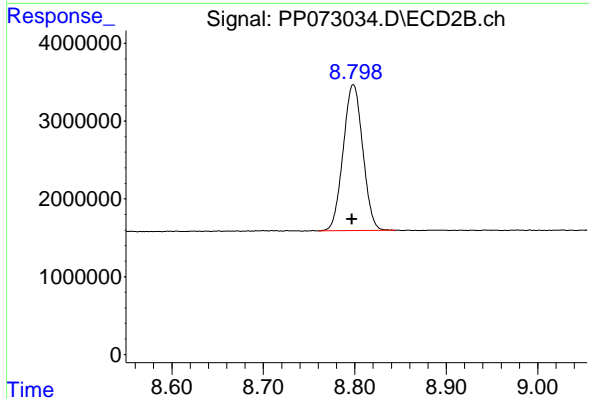
#1 Tetrachloro-m-xylene

R.T.: 3.788 min  
 Delta R.T.: 0.000 min  
 Response: 35499575  
 Conc: 19.70 ng/ml



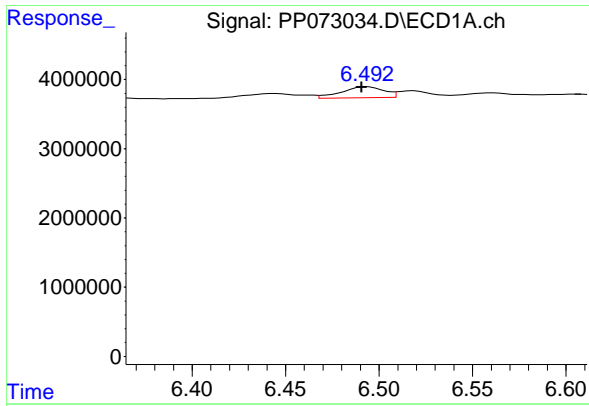
#2 Decachlorobiphenyl

R.T.: 10.186 min  
 Delta R.T.: 0.000 min  
 Response: 39201997  
 Conc: 22.94 ng/ml



#2 Decachlorobiphenyl

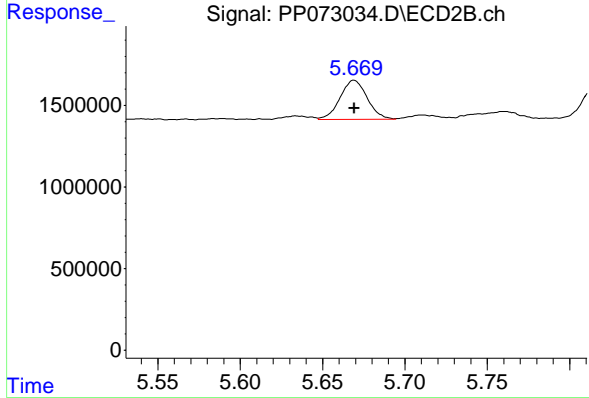
R.T.: 8.798 min  
 Delta R.T.: 0.001 min  
 Response: 27842015  
 Conc: 20.86 ng/ml



#26 AR-1254-1

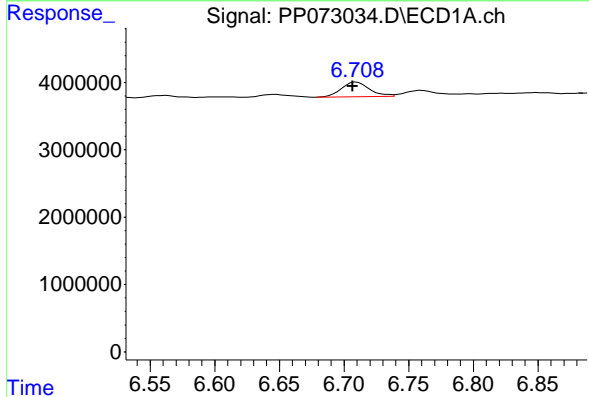
R.T.: 6.494 min  
 Delta R.T.: 0.003 min  
 Response: 2522225  
 Conc: 29.96 ng/ml

Instrument : ECD\_P  
 ClientSampleId : LOD-MDL-SOIL-03-QT2-2025



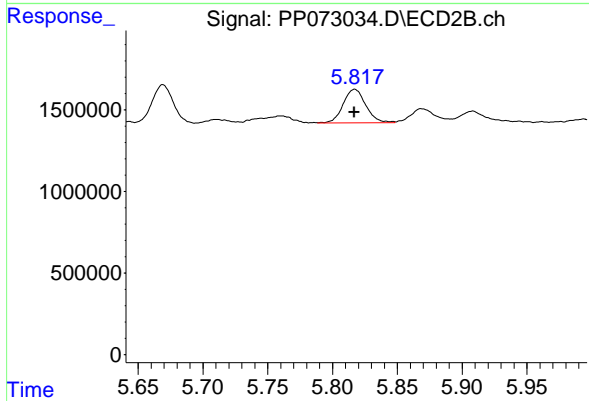
#26 AR-1254-1

R.T.: 5.669 min  
 Delta R.T.: 0.000 min  
 Response: 2734938  
 Conc: 24.94 ng/ml



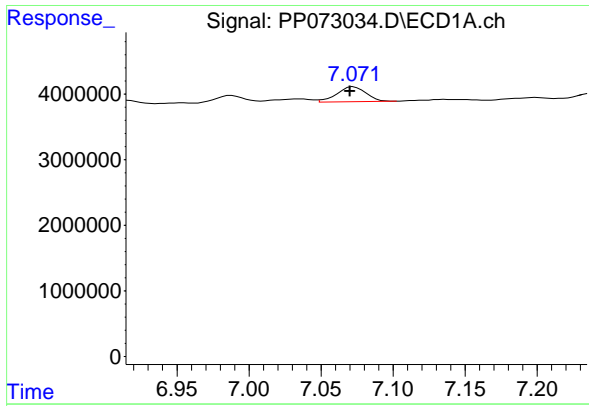
#27 AR-1254-2

R.T.: 6.710 min  
 Delta R.T.: 0.003 min  
 Response: 3236098  
 Conc: 25.81 ng/ml



#27 AR-1254-2

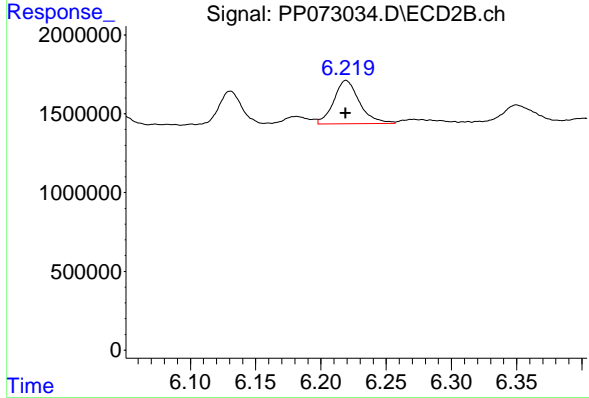
R.T.: 5.817 min  
 Delta R.T.: 0.000 min  
 Response: 2531108  
 Conc: 26.77 ng/ml



#28 AR-1254-3

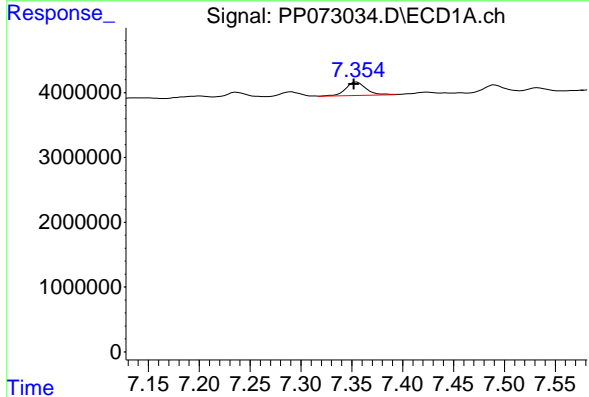
R.T.: 7.073 min  
 Delta R.T.: 0.003 min  
 Response: 3208533  
 Conc: 24.45 ng/ml

Instrument : ECD\_P  
 ClientSampleId : LOD-MDL-SOIL-03-QT2-2025



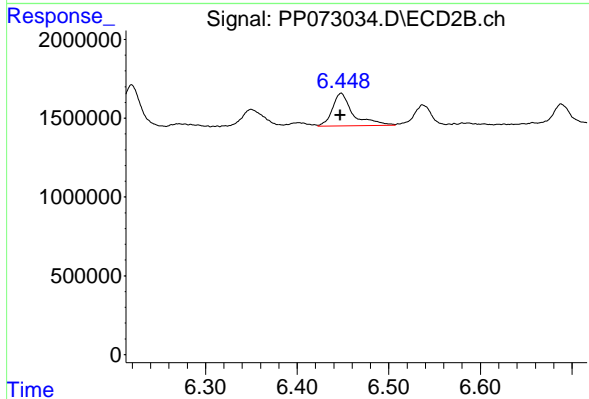
#28 AR-1254-3

R.T.: 6.219 min  
 Delta R.T.: 0.000 min  
 Response: 3807607  
 Conc: 25.81 ng/ml



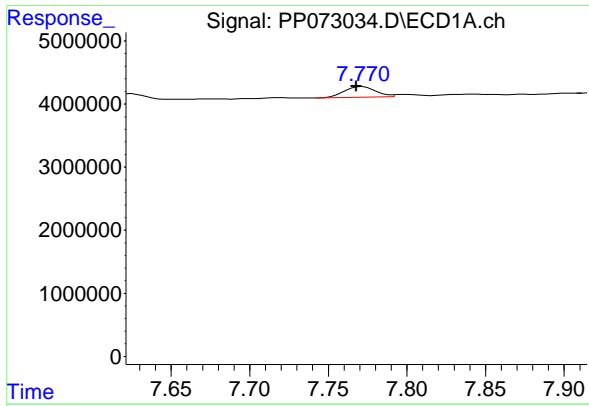
#29 AR-1254-4

R.T.: 7.355 min  
 Delta R.T.: 0.003 min  
 Response: 2789417  
 Conc: 23.29 ng/ml



#29 AR-1254-4

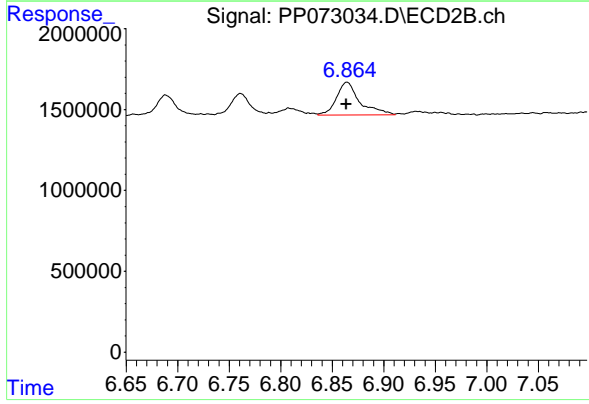
R.T.: 6.448 min  
 Delta R.T.: 0.000 min  
 Response: 3227510  
 Conc: 33.24 ng/ml



#30 AR-1254-5

R.T.: 7.772 min  
 Delta R.T.: 0.004 min  
 Response: 2338666  
 Conc: 20.47 ng/ml

Instrument : ECD\_P  
 ClientSampleId : LOD-MDL-SOIL-03-QT2-2025



#30 AR-1254-5

R.T.: 6.864 min  
 Delta R.T.: 0.000 min  
 Response: 3175282  
 Conc: 24.43 ng/ml