

Data Path : Z:\pestpcbsrv\HPCHEM1\ECD\_P\Data\PP061825\  
 Data File : PP073041.D  
 Signal(s) : Signal #1: ECD1A.ch Signal #2: ECD2B.ch  
 Acq On : 18 Jun 2025 16:14  
 Operator : YP\AJ  
 Sample : Q2126-01  
 Misc : AR1232 LOD 40 PPB  
 ALS Vial : 18 Sample Multiplier: 1

**Instrument :**  
 ECD\_P  
**ClientSampleId :**  
 LOD-MDL-SOIL-03-QT2-2025

Integration File signal 1: autoint1.e  
 Integration File signal 2: autoint2.e  
 Quant Time: Jun 19 01:36:49 2025  
 Quant Method : Z:\pestpcbsrv\HPCHEM1\ECD\_P\methods\PP061725.M  
 Quant Title : GC EXTRACTABLES  
 QLast Update : Wed Jun 18 08:17:15 2025  
 Response via : Initial Calibration  
 Integrator: ChemStation

Volume Inj. : 2 µl  
 Signal #1 Phase : ZB-MR1 Signal #2 Phase: ZB-MR2  
 Signal #1 Info : 30Mx0.32mmx 0.50µ Signal #2 Info : 30M x 0.32mm x 0.25µm

Compound	RT#1	RT#2	Resp#1	Resp#2	ng/ml	ng/ml
-----						
System Monitoring Compounds						
1) SA Tetrachlo...	4.493	3.789	41355132	35352777	19.592	19.621
2) SA Decachlor...	10.188	8.799	37400143	28793101	21.886	21.572
Target Compounds						
11) L3 AR-1232-1	4.857	4.160	2029544	1848642	43.222	40.572
12) L3 AR-1232-2	5.380	4.887	773700	1943489	34.587	42.012
13) L3 AR-1232-3	5.667	5.064	2422255	1162981	46.945	47.357
14) L3 AR-1232-4	5.827	5.147	1128568	955156	43.725	44.169
15) L3 AR-1232-5	5.916	5.319	870497	1016731	24.404	44.479 #
-----						

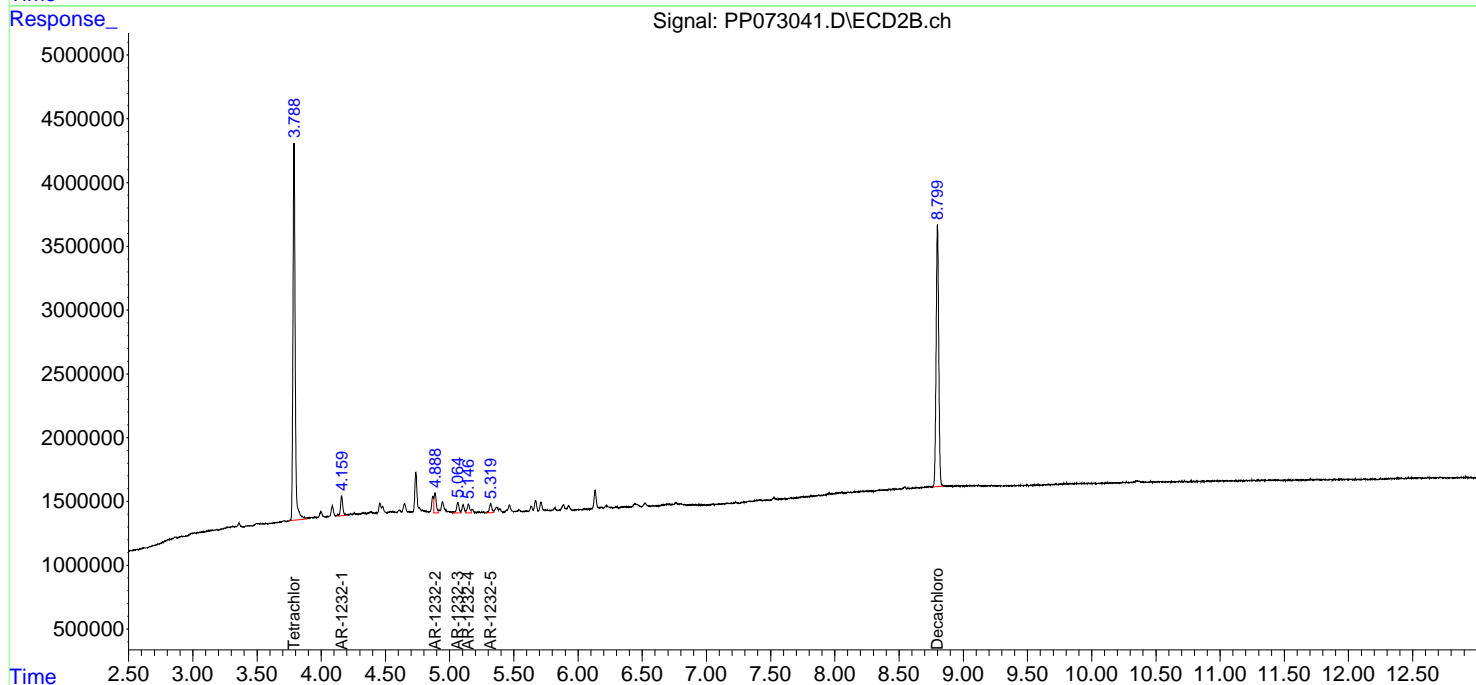
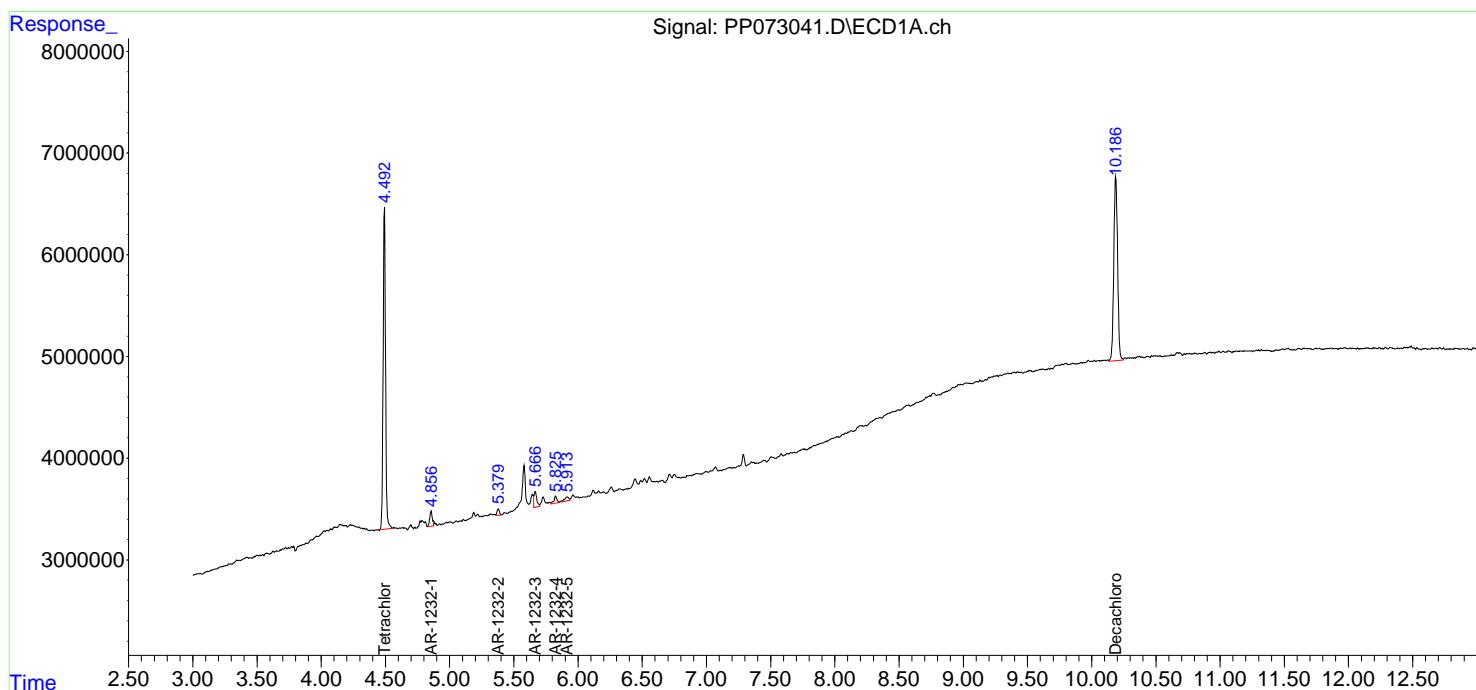
(f)=RT Delta > 1/2 Window (#)=Amounts differ by > 25% (m)=manual int.

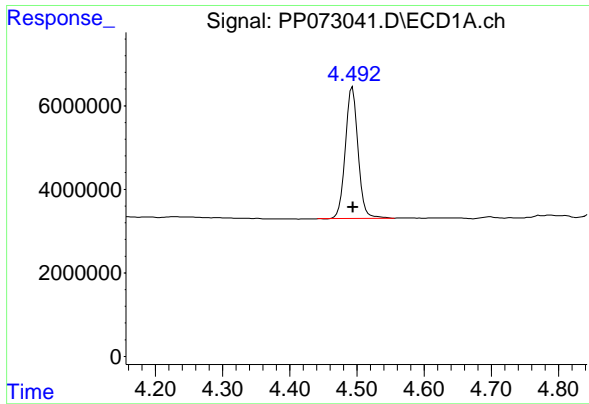
Data Path : Z:\pestpcbsrv\HPCHEM1\ECD\_P\Data\PP061825\  
 Data File : PP073041.D  
 Signal(s) : Signal #1: ECD1A.ch Signal #2: ECD2B.ch  
 Acq On : 18 Jun 2025 16:14  
 Operator : YP\AJ  
 Sample : Q2126-01  
 Misc : AR1232 LOD 40 PPB  
 ALS Vial : 18 Sample Multiplier: 1

Instrument :  
 ECD\_P  
 ClientSampleId :  
 LOD-MDL-SOIL-03-QT2-2025

Integration File signal 1: autoint1.e  
 Integration File signal 2: autoint2.e  
 Quant Time: Jun 19 01:36:49 2025  
 Quant Method : Z:\pestpcbsrv\HPCHEM1\ECD\_P\methods\PP061725.M  
 Quant Title : GC EXTRACTABLES  
 QLast Update : Wed Jun 18 08:17:15 2025  
 Response via : Initial Calibration  
 Integrator: ChemStation

Volume Inj. : 2 µl  
 Signal #1 Phase : ZB-MR1 Signal #2 Phase: ZB-MR2  
 Signal #1 Info : 30Mx0.32mmx 0.50µm Signal #2 Info : 30M x 0.32mm x 0.25µm

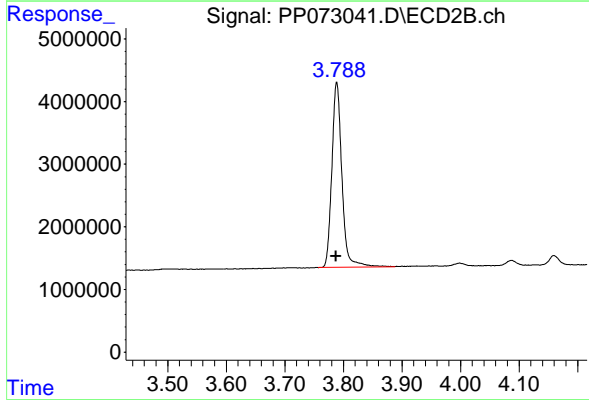




#1 Tetrachloro-m-xylene

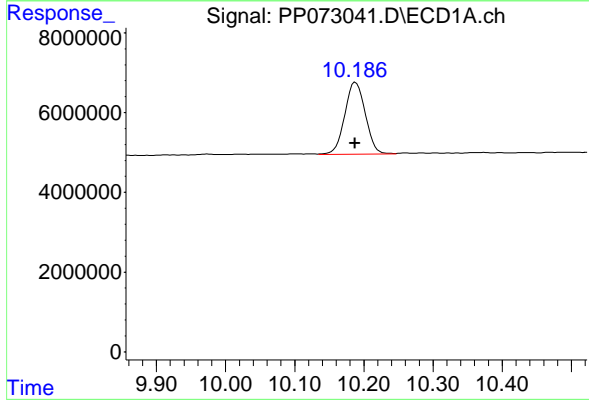
R.T.: 4.493 min  
 Delta R.T.: 0.000 min  
 Response: 41355132  
 Conc: 19.59 ng/ml

Instrument : ECD\_P  
 ClientSampleId : LOD-MDL-SOIL-03-QT2-2025



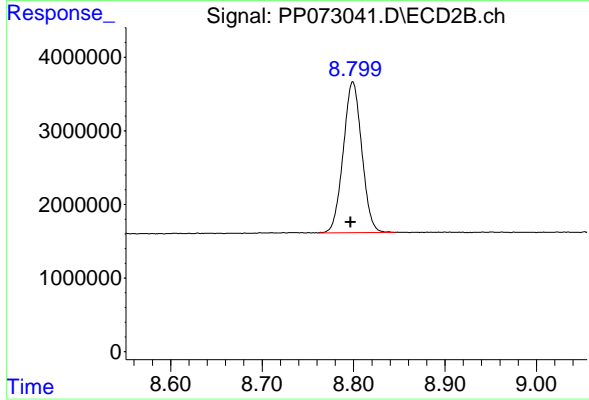
#1 Tetrachloro-m-xylene

R.T.: 3.789 min  
 Delta R.T.: 0.001 min  
 Response: 35352777  
 Conc: 19.62 ng/ml



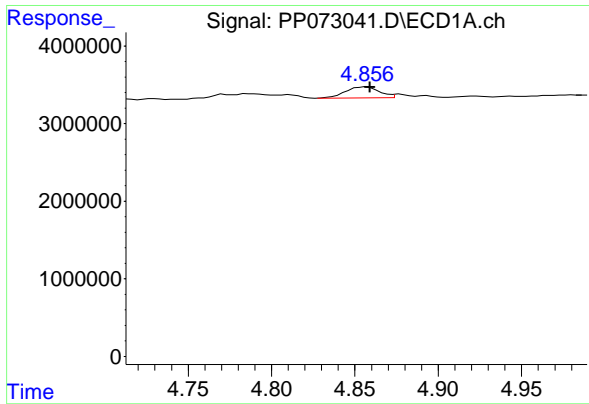
#2 Decachlorobiphenyl

R.T.: 10.188 min  
 Delta R.T.: 0.000 min  
 Response: 37400143  
 Conc: 21.89 ng/ml



#2 Decachlorobiphenyl

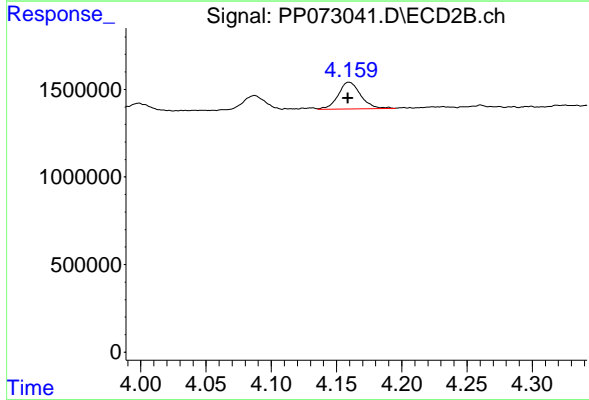
R.T.: 8.799 min  
 Delta R.T.: 0.002 min  
 Response: 28793101  
 Conc: 21.57 ng/ml



#11 AR-1232-1

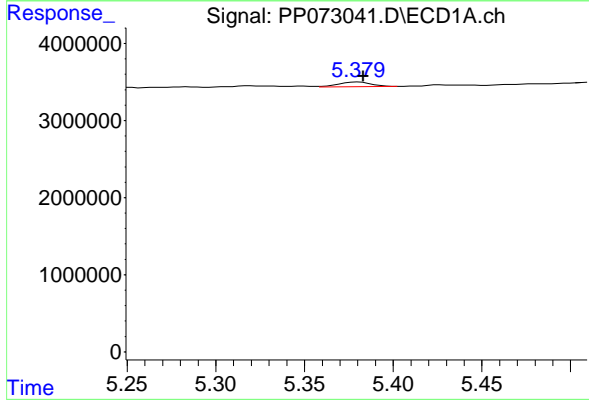
R.T.: 4.857 min  
 Delta R.T.: -0.002 min  
 Response: 2029544  
 Conc: 43.22 ng/ml

Instrument : ECD\_P  
 ClientSampleId : LOD-MDL-SOIL-03-QT2-2025



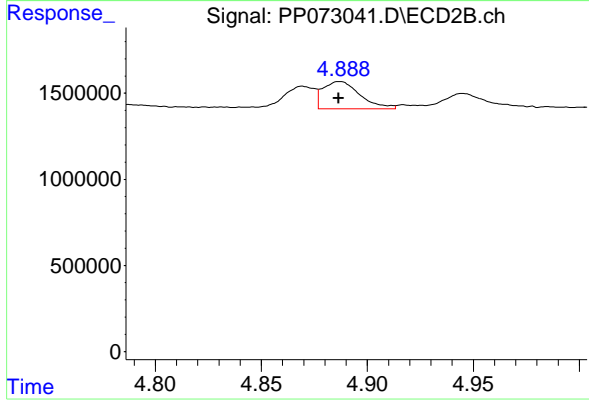
#11 AR-1232-1

R.T.: 4.160 min  
 Delta R.T.: 0.001 min  
 Response: 1848642  
 Conc: 40.57 ng/ml



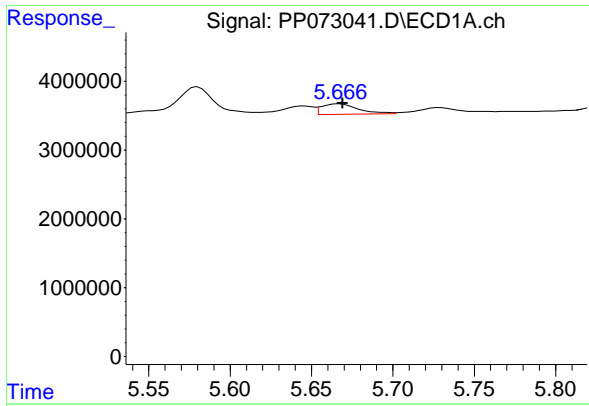
#12 AR-1232-2

R.T.: 5.380 min  
 Delta R.T.: -0.003 min  
 Response: 773700  
 Conc: 34.59 ng/ml



#12 AR-1232-2

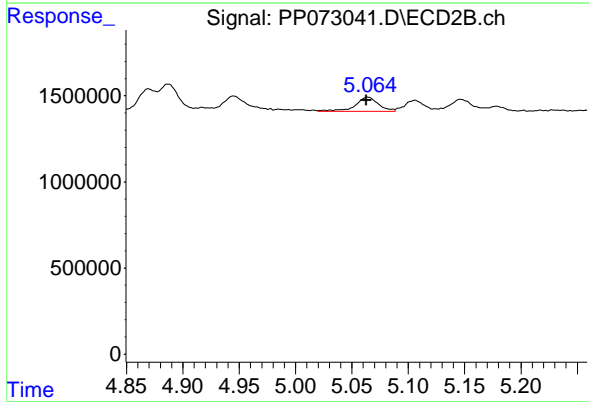
R.T.: 4.887 min  
 Delta R.T.: 0.000 min  
 Response: 1943489  
 Conc: 42.01 ng/ml



#13 AR-1232-3

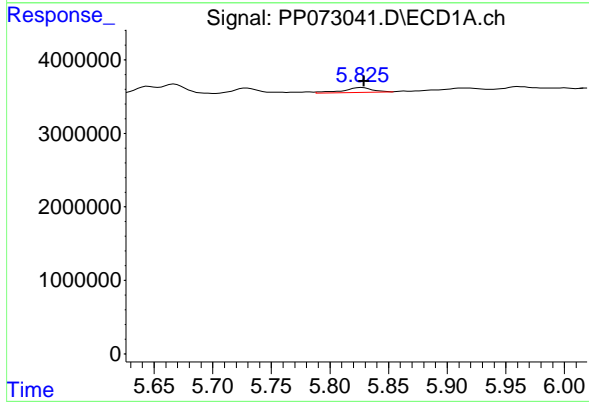
R.T.: 5.667 min  
 Delta R.T.: -0.002 min  
 Response: 2422255  
 Conc: 46.95 ng/ml

Instrument :  
 ECD\_P  
 ClientSampleId :  
 LOD-MDL-SOIL-03-QT2-2025



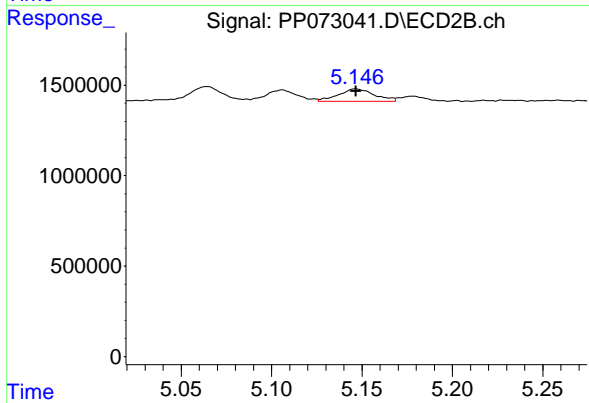
#13 AR-1232-3

R.T.: 5.064 min  
 Delta R.T.: 0.002 min  
 Response: 1162981  
 Conc: 47.36 ng/ml



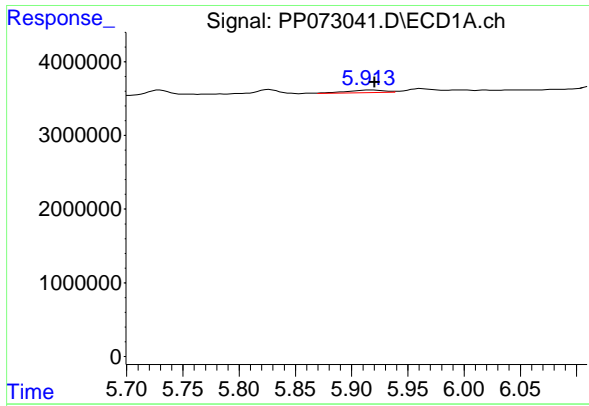
#14 AR-1232-4

R.T.: 5.827 min  
 Delta R.T.: -0.002 min  
 Response: 1128568  
 Conc: 43.73 ng/ml



#14 AR-1232-4

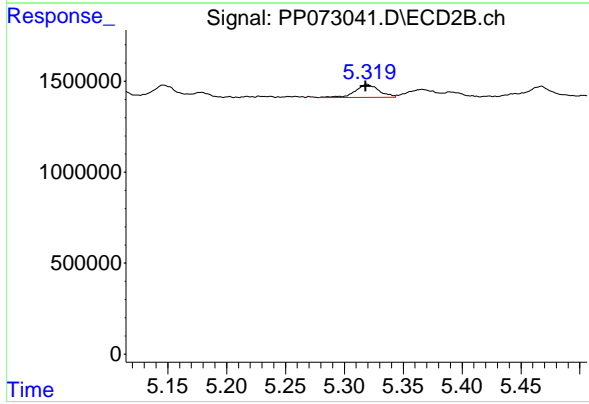
R.T.: 5.147 min  
 Delta R.T.: 0.000 min  
 Response: 955156  
 Conc: 44.17 ng/ml



#15 AR-1232-5

R.T.: 5.916 min  
 Delta R.T.: -0.005 min  
 Response: 870497  
 Conc: 24.40 ng/ml

Instrument : ECD\_P  
 ClientSampleId : LOD-MDL-SOIL-03-QT2-2025



#15 AR-1232-5

R.T.: 5.319 min  
 Delta R.T.: 0.000 min  
 Response: 1016731  
 Conc: 44.48 ng/ml