

Data Path : Z:\pestpcbsrv\HPCHEM1\ECD_P\Data\PP061825\
 Data File : PP073049.D
 Signal(s) : Signal #1: ECD1A.ch Signal #2: ECD2B.ch
 Acq On : 18 Jun 2025 19:14
 Operator : YP\AJ
 Sample : PB168529BL
 Misc :
 ALS Vial : 24 Sample Multiplier: 1

Instrument :
 ECD_P
 ClientSampleId :
 PB168529BL

Integration File signal 1: autoint1.e
 Integration File signal 2: autoint2.e
 Quant Time: Jun 19 01:39:01 2025
 Quant Method : Z:\pestpcbsrv\HPCHEM1\ECD_P\methods\PP061725.M
 Quant Title : GC EXTRACTABLES
 QLast Update : Wed Jun 18 08:17:15 2025
 Response via : Initial Calibration
 Integrator: ChemStation

Volume Inj. : 2 µl
 Signal #1 Phase : ZB-MR1 Signal #2 Phase: ZB-MR2
 Signal #1 Info : 30Mx0.32mmx 0.50µ Signal #2 Info : 30M x 0.32mm x 0.25µm

Compound	RT#1	RT#2	Resp#1	Resp#2	ng/ml	ng/ml

System Monitoring Compounds						
1) SA Tetrachlo...	4.492	3.788	40838682	35082612	19.347	19.471
2) SA Decachlor...	10.187	8.799	37875420	27154117	22.164	20.344

Target Compounds

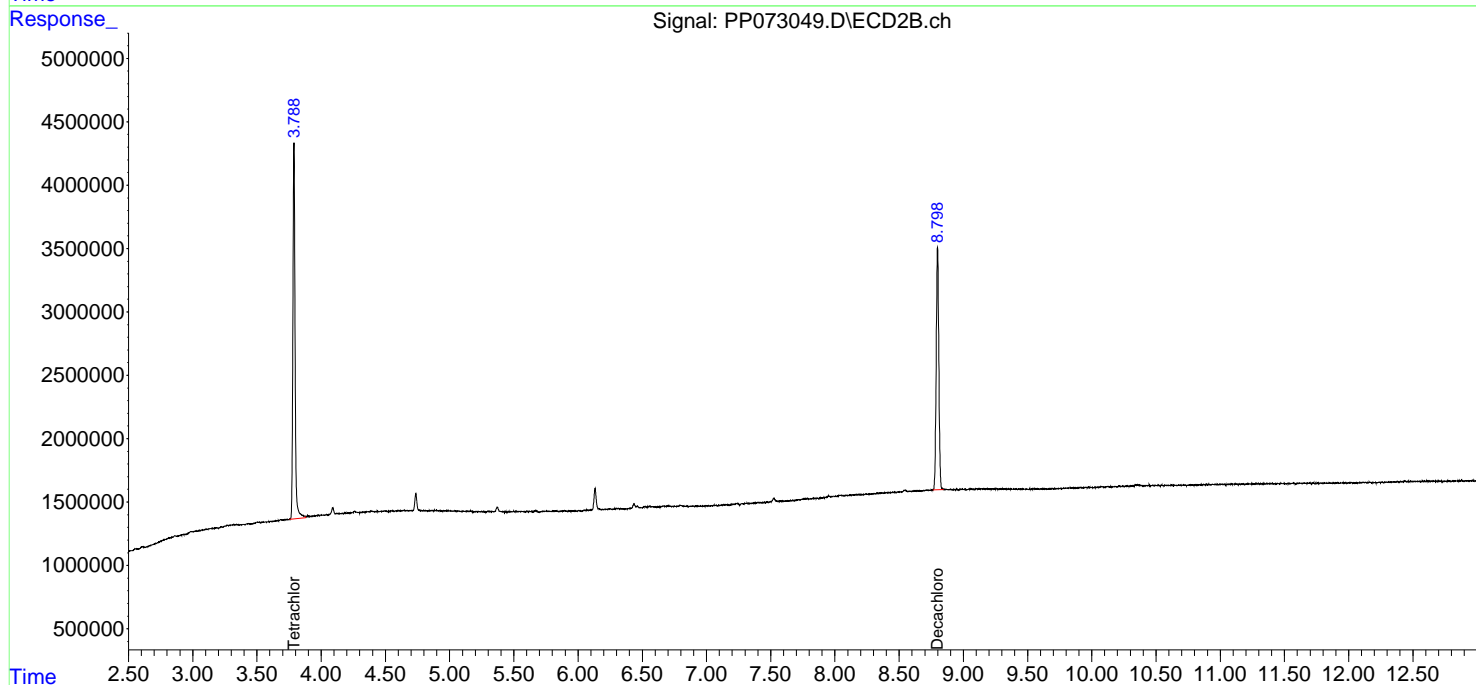
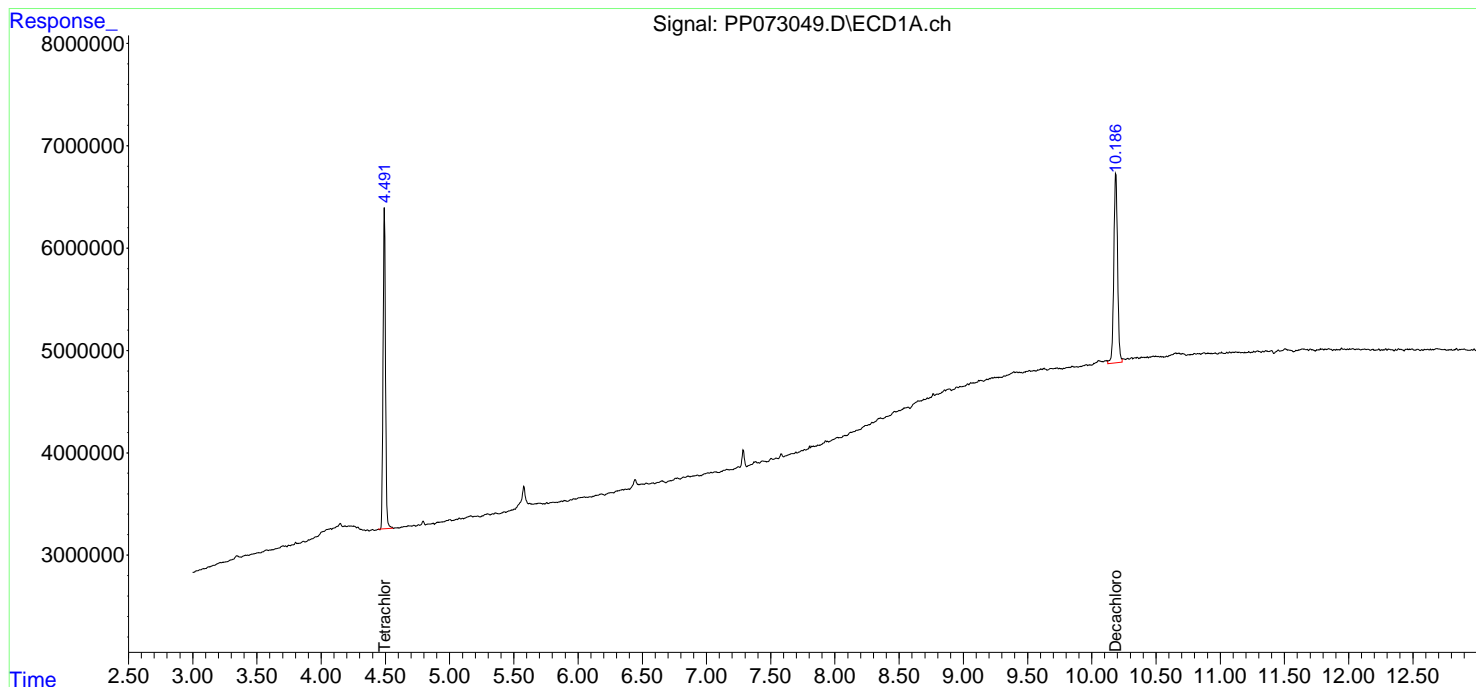
(f)=RT Delta > 1/2 Window (#)=Amounts differ by > 25% (m)=manual int.

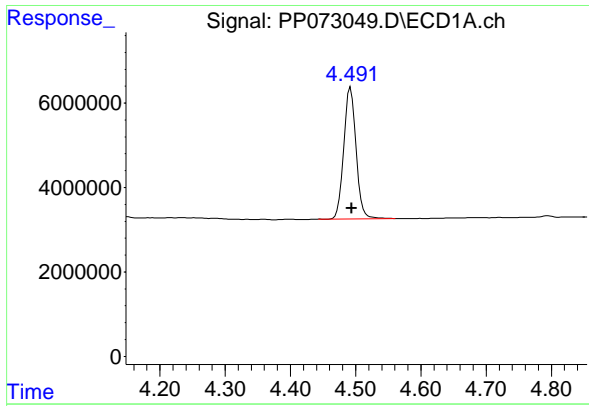
Data Path : Z:\pestpcbsrv\HPCHEM1\ECD_P\Data\PP061825\
 Data File : PP073049.D
 Signal(s) : Signal #1: ECD1A.ch Signal #2: ECD2B.ch
 Acq On : 18 Jun 2025 19:14
 Operator : YP\AJ
 Sample : PB168529BL
 Misc :
 ALS Vial : 24 Sample Multiplier: 1

Instrument :
 ECD_P
 ClientSampleId :
 PB168529BL

Integration File signal 1: autoint1.e
 Integration File signal 2: autoint2.e
 Quant Time: Jun 19 01:39:01 2025
 Quant Method : Z:\pestpcbsrv\HPCHEM1\ECD_P\methods\PP061725.M
 Quant Title : GC EXTRACTABLES
 QLast Update : Wed Jun 18 08:17:15 2025
 Response via : Initial Calibration
 Integrator: ChemStation

Volume Inj. : 2 µl
 Signal #1 Phase : ZB-MR1 Signal #2 Phase: ZB-MR2
 Signal #1 Info : 30Mx0.32mmx 0.50µm Signal #2 Info : 30M x 0.32mm x 0.25µm

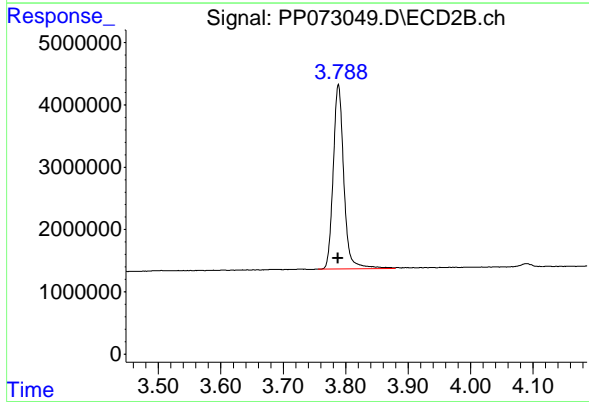




#1 Tetrachloro-m-xylene

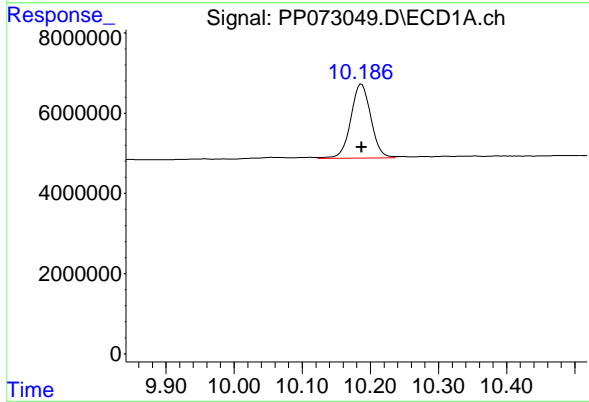
R.T.: 4.492 min
 Delta R.T.: -0.002 min
 Response: 40838682
 Conc: 19.35 ng/ml

Instrument :
 ECD_P
 ClientSampleId :
 PB168529BL



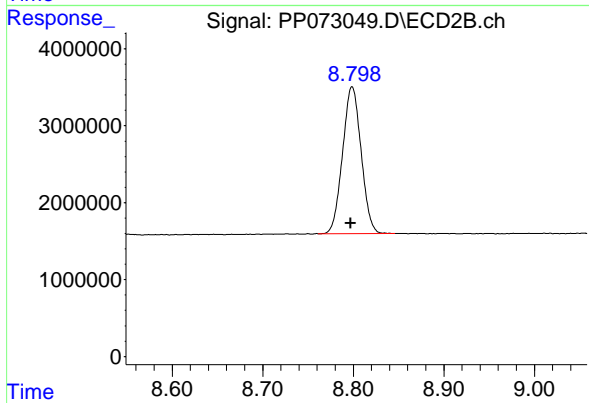
#1 Tetrachloro-m-xylene

R.T.: 3.788 min
 Delta R.T.: 0.000 min
 Response: 35082612
 Conc: 19.47 ng/ml



#2 Decachlorobiphenyl

R.T.: 10.187 min
 Delta R.T.: 0.000 min
 Response: 37875420
 Conc: 22.16 ng/ml



#2 Decachlorobiphenyl

R.T.: 8.799 min
 Delta R.T.: 0.002 min
 Response: 27154117
 Conc: 20.34 ng/ml