

Data Path : Z:\pestpcbsrv\HPCHEM1\ECD_P\Data\PP061825\
 Data File : PP073050.D
 Signal(s) : Signal #1: ECD1A.ch Signal #2: ECD2B.ch
 Acq On : 18 Jun 2025 19:30
 Operator : YP\AJ
 Sample : Q2126-07
 Misc : AR1660 LOD 25 PPB
 ALS Vial : 25 Sample Multiplier: 1

Instrument :
 ECD_P
ClientSampleId :
 LOD-MDL-WATER-01-QT2-2025

Manual Integrations
APPROVED
 Reviewed By :Yogesh Patel 06/19/2025
 Supervised By :mohammad ahmed 06/20/2025

Integration File signal 1: autoint1.e
 Integration File signal 2: autoint2.e
 Quant Time: Jun 19 01:39:18 2025
 Quant Method : Z:\pestpcbsrv\HPCHEM1\ECD_P\methods\PP061725.M
 Quant Title : GC EXTRACTABLES
 QLast Update : Wed Jun 18 08:17:15 2025
 Response via : Initial Calibration
 Integrator: ChemStation

Volume Inj. : 2 µl
 Signal #1 Phase : ZB-MR1 Signal #2 Phase: ZB-MR2
 Signal #1 Info : 30Mx0.32mmx 0.50µ Signal #2 Info : 30M x 0.32mm x 0.25µm

Compound	RT#1	RT#2	Resp#1	Resp#2	ng/ml	ng/ml

System Monitoring Compounds						
1) SA Tetrachlo...	4.495	3.789	41123949	35832564	19.483	19.887
2) SA Decachlor...	10.189	8.799	38632885	27936390	22.607	20.931
Target Compounds						
3) L1 AR-1016-1	5.646	4.869	2074522	1837423	28.547m	26.739
4) L1 AR-1016-2	5.668	4.887	3552171	2620366	34.149	26.037
5) L1 AR-1016-3	5.731	5.063	2265320	1402932	34.665	25.640 #
6) L1 AR-1016-4	5.828	5.105	1637613	1206728	31.323	27.087
7) L1 AR-1016-5	6.121	5.319	1243603	1406175	24.870	25.436
31) L7 AR-1260-1	7.237	6.350	2207164	2537146	25.021	26.783
32) L7 AR-1260-2	7.491	6.539	3300162	3081124	24.287	26.462
33) L7 AR-1260-3	7.848	6.691	2881681	2745337	25.244	26.357
34) L7 AR-1260-4	8.072	7.160	2675073	2277820	25.960	25.961
35) L7 AR-1260-5	8.390	7.402	6138211	5558422	25.510	26.047

(f)=RT Delta > 1/2 Window (#)=Amounts differ by > 25% (m)=manual int.

Data Path : Z:\pestpcbsrv\HPCHEM1\ECD_P\Data\PP061825\
 Data File : PP073050.D
 Signal(s) : Signal #1: ECD1A.ch Signal #2: ECD2B.ch
 Acq On : 18 Jun 2025 19:30
 Operator : YP\AJ
 Sample : Q2126-07
 Misc : AR1660 LOD 25 PPB
 ALS Vial : 25 Sample Multiplier: 1

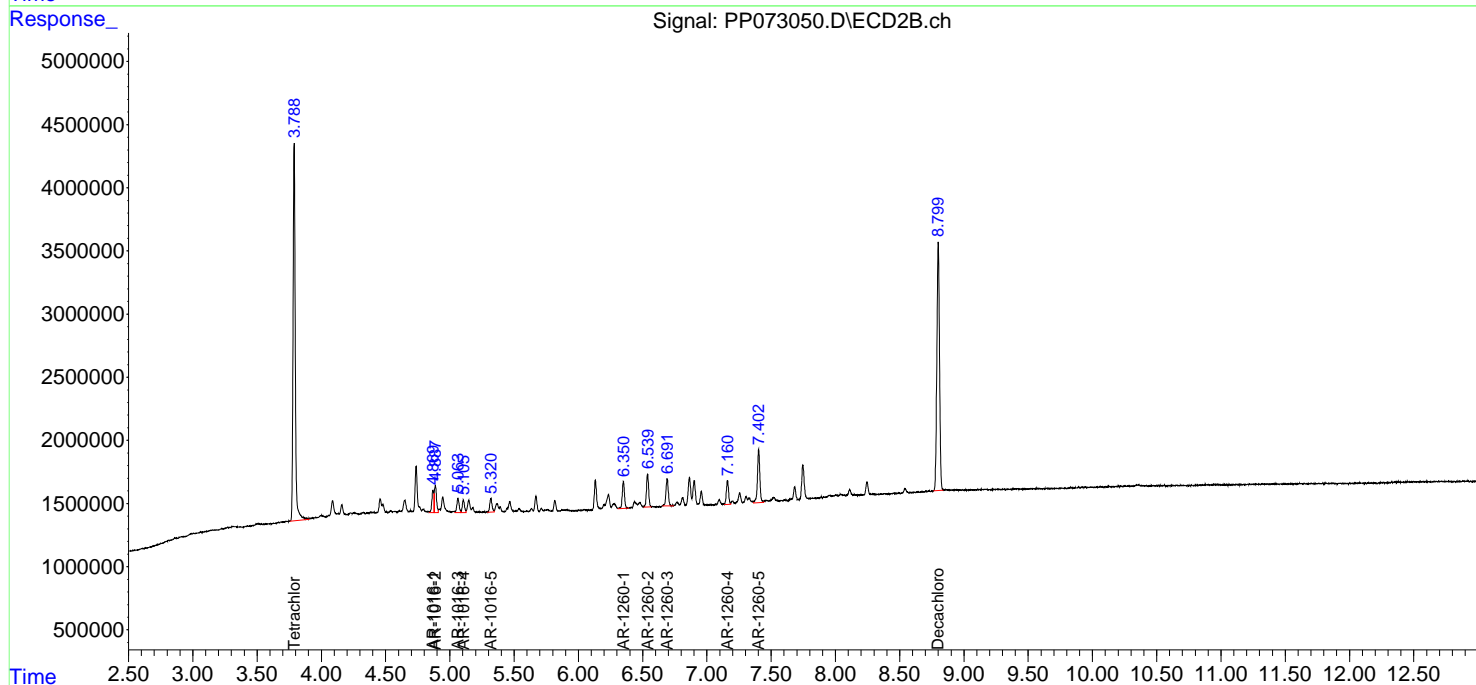
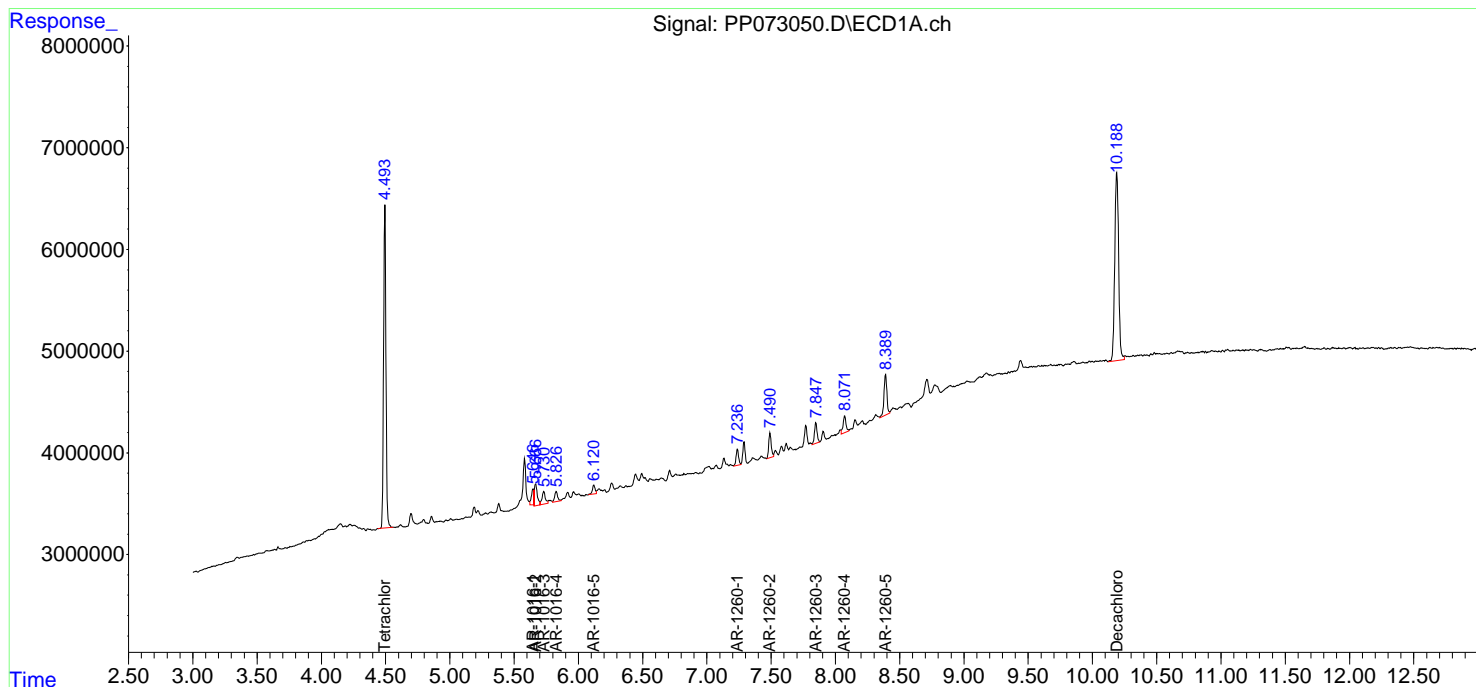
Instrument :
 ECD_P
ClientSampleId :
 LOD-MDL-WATER-01-QT2-2025

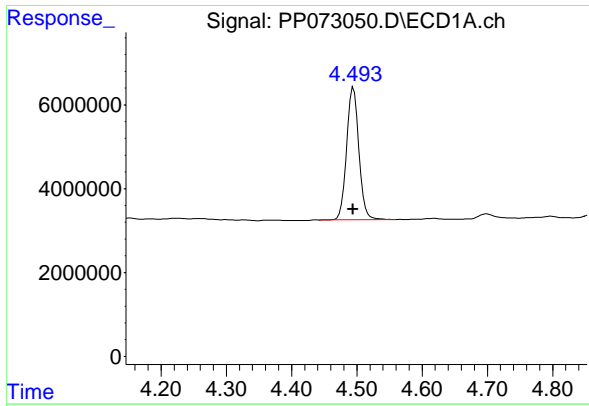
Manual Integrations
APPROVED

Reviewed By :Yogesh Patel 06/19/2025
 Supervised By :mohammad ahmed 06/20/2025

Integration File signal 1: autoint1.e
 Integration File signal 2: autoint2.e
 Quant Time: Jun 19 01:39:18 2025
 Quant Method : Z:\pestpcbsrv\HPCHEM1\ECD_P\methods\PP061725.M
 Quant Title : GC EXTRACTABLES
 QLast Update : Wed Jun 18 08:17:15 2025
 Response via : Initial Calibration
 Integrator: ChemStation

Volume Inj. : 2 µl
 Signal #1 Phase : ZB-MR1 Signal #2 Phase: ZB-MR2
 Signal #1 Info : 30Mx0.32mmx 0.50µm Signal #2 Info : 30M x 0.32mm x 0.25µm





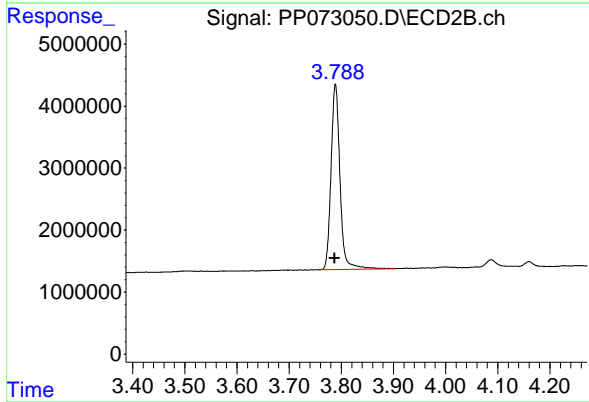
#1 Tetrachloro-m-xylene

R.T.: 4.495 min
 Delta R.T.: 0.000 min
 Response: 41123949
 Conc: 19.48 ng/ml

Instrument : ECD_P
 Client Sample Id : LOD-MDL-WATER-01-QT2-2025

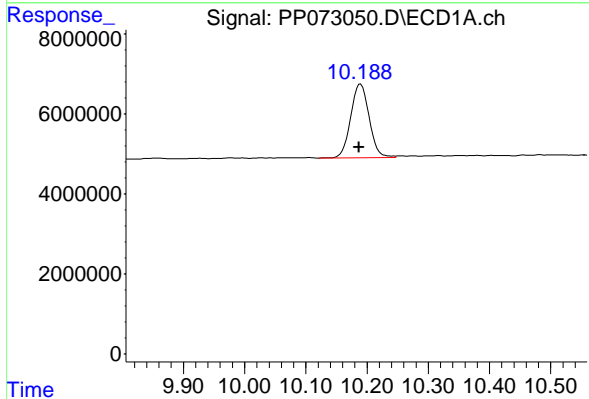
Manual Integrations
 APPROVED

Reviewed By :Yogesh Patel 06/19/2025
 Supervised By :mohammad ahmed 06/20/2025



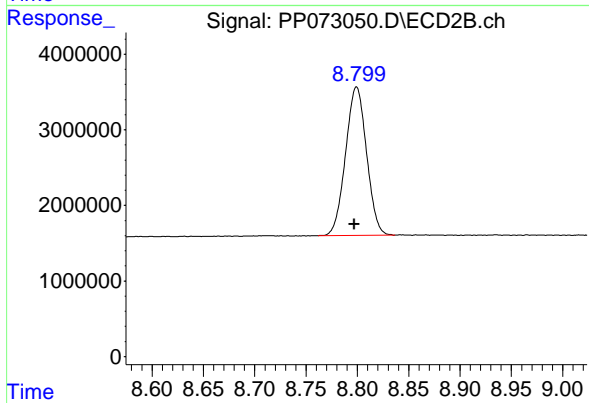
#1 Tetrachloro-m-xylene

R.T.: 3.789 min
 Delta R.T.: 0.001 min
 Response: 35832564
 Conc: 19.89 ng/ml



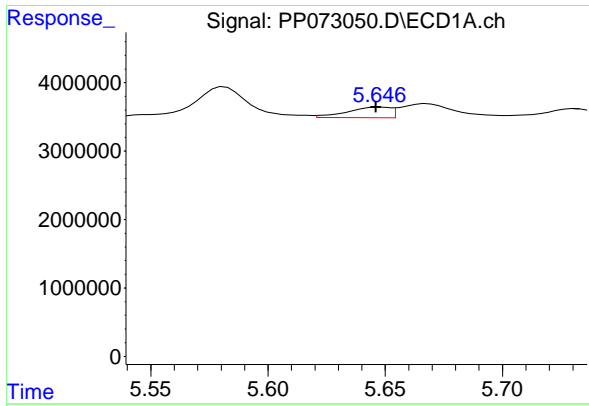
#2 Decachlorobiphenyl

R.T.: 10.189 min
 Delta R.T.: 0.002 min
 Response: 38632885
 Conc: 22.61 ng/ml



#2 Decachlorobiphenyl

R.T.: 8.799 min
 Delta R.T.: 0.002 min
 Response: 27936390
 Conc: 20.93 ng/ml



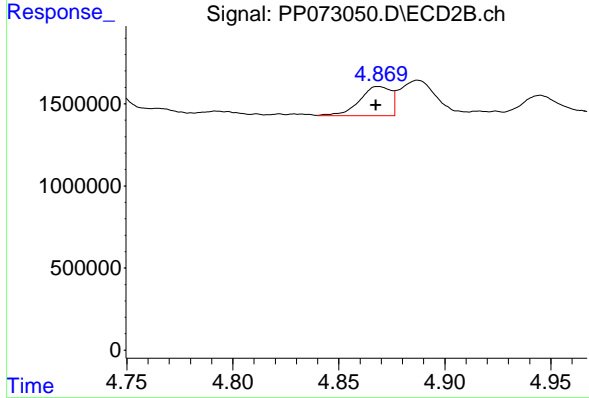
#3 AR-1016-1

R.T.: 5.646 min
 Delta R.T.: 0.000 min
 Response: 2074522
 Conc: 28.55 ng/ml

Instrument : ECD_P
 ClientSampleId : LOD-MDL-WATER-01-QT2-2025

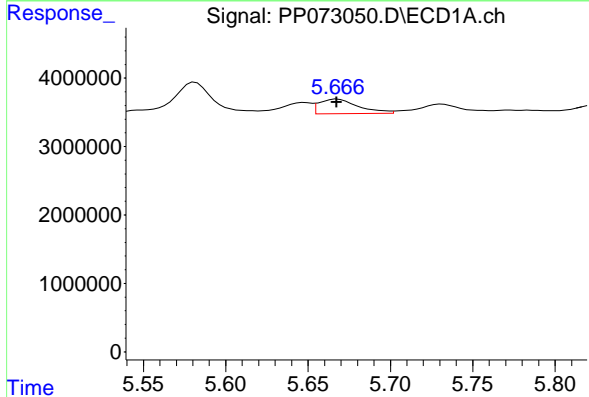
Manual Integrations
 APPROVED

Reviewed By :Yogesh Patel 06/19/2025
 Supervised By :mohammad ahmed 06/20/2025



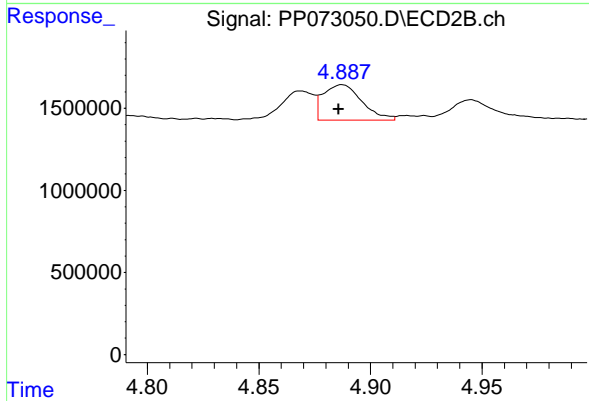
#3 AR-1016-1

R.T.: 4.869 min
 Delta R.T.: 0.001 min
 Response: 1837423
 Conc: 26.74 ng/ml



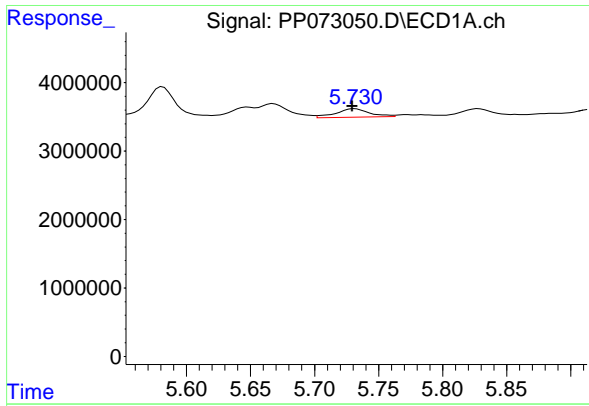
#4 AR-1016-2

R.T.: 5.668 min
 Delta R.T.: 0.000 min
 Response: 3552171
 Conc: 34.15 ng/ml



#4 AR-1016-2

R.T.: 4.887 min
 Delta R.T.: 0.002 min
 Response: 2620366
 Conc: 26.04 ng/ml



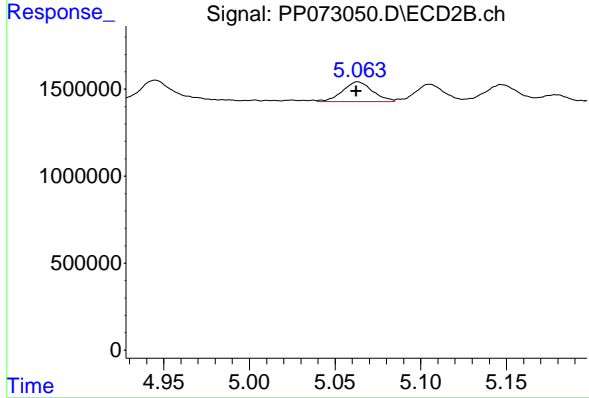
#5 AR-1016-3

R.T.: 5.731 min
 Delta R.T.: 0.002 min
 Response: 2265320
 Conc: 34.67 ng/ml

Instrument : ECD_P
 Client Sample Id : LOD-MDL-WATER-01-QT2-2025

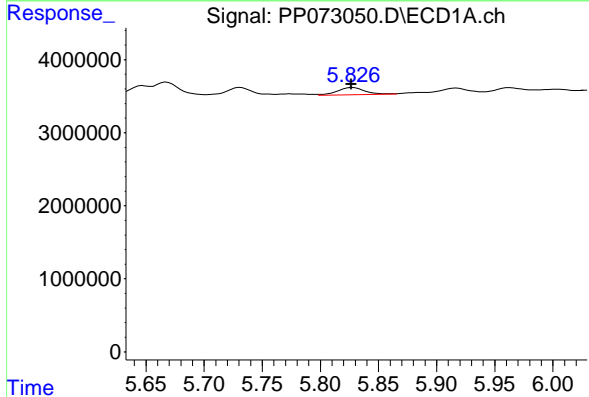
Manual Integrations
 APPROVED

Reviewed By :Yogesh Patel 06/19/2025
 Supervised By :mohammad ahmed 06/20/2025



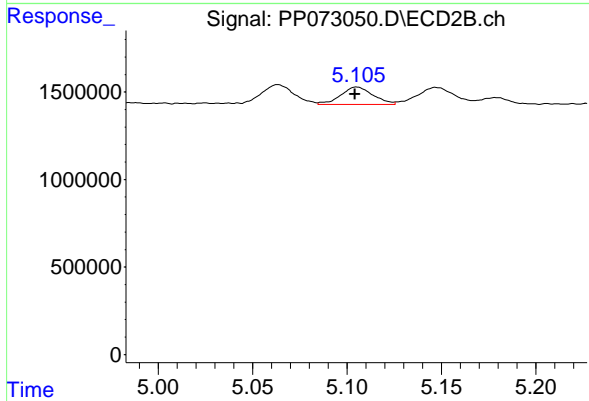
#5 AR-1016-3

R.T.: 5.063 min
 Delta R.T.: 0.001 min
 Response: 1402932
 Conc: 25.64 ng/ml



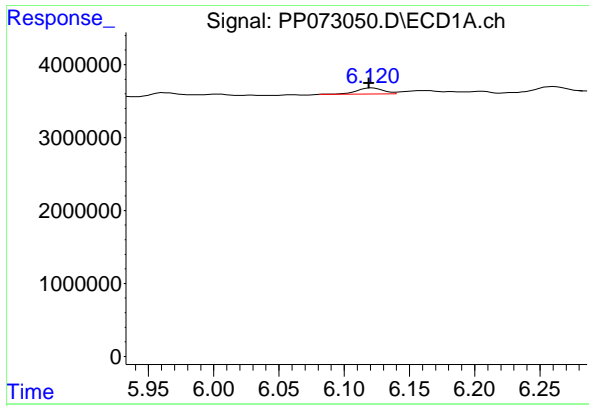
#6 AR-1016-4

R.T.: 5.828 min
 Delta R.T.: 0.001 min
 Response: 1637613
 Conc: 31.32 ng/ml



#6 AR-1016-4

R.T.: 5.105 min
 Delta R.T.: 0.000 min
 Response: 1206728
 Conc: 27.09 ng/ml



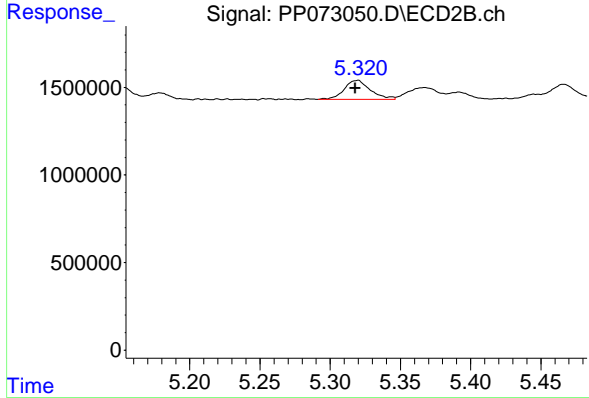
#7 AR-1016-5

R.T.: 6.121 min
 Delta R.T.: 0.002 min
 Response: 1243603
 Conc: 24.87 ng/ml

Instrument : ECD_P
 Client SampleId : LOD-MDL-WATER-01-QT2-2025

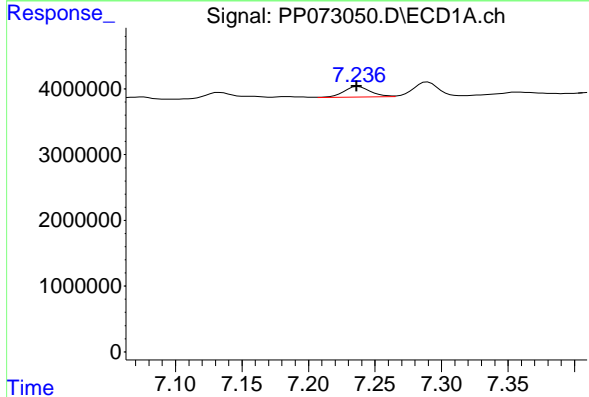
Manual Integrations
 APPROVED

Reviewed By :Yogesh Patel 06/19/2025
 Supervised By :mohammad ahmed 06/20/2025



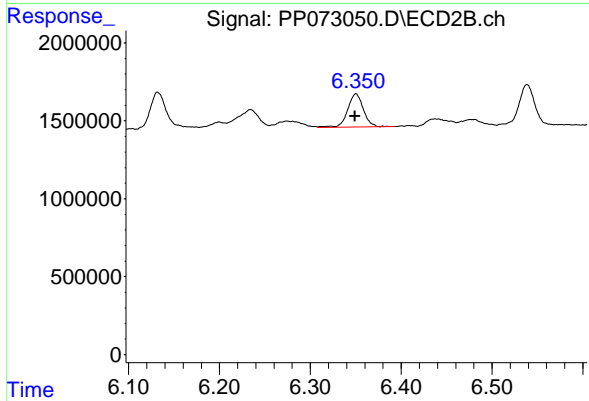
#7 AR-1016-5

R.T.: 5.319 min
 Delta R.T.: 0.001 min
 Response: 1406175
 Conc: 25.44 ng/ml



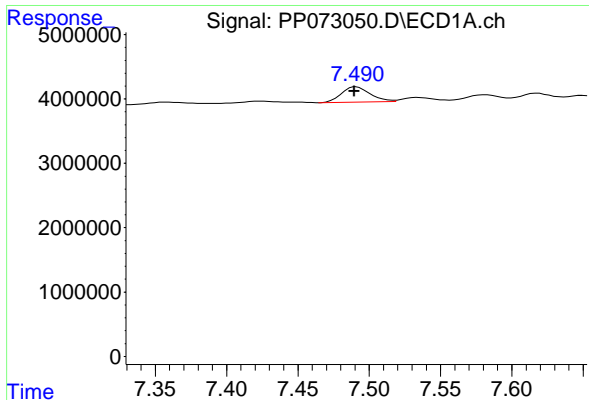
#31 AR-1260-1

R.T.: 7.237 min
 Delta R.T.: 0.002 min
 Response: 2207164
 Conc: 25.02 ng/ml



#31 AR-1260-1

R.T.: 6.350 min
 Delta R.T.: 0.001 min
 Response: 2537146
 Conc: 26.78 ng/ml



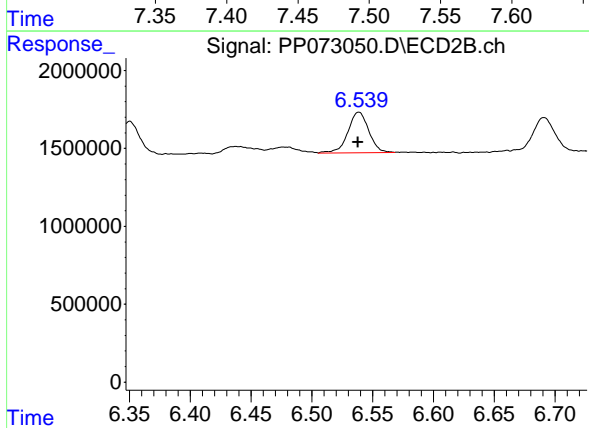
#32 AR-1260-2

R.T.: 7.491 min
 Delta R.T.: 0.002 min
 Response: 3300162
 Conc: 24.29 ng/ml

Instrument : ECD_P
 Client Sample Id : LOD-MDL-WATER-01-QT2-2025

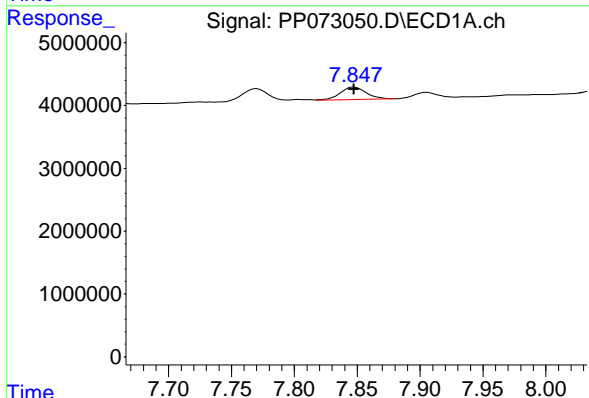
Manual Integrations
 APPROVED

Reviewed By :Yogesh Patel 06/19/2025
 Supervised By :mohammad ahmed 06/20/2025



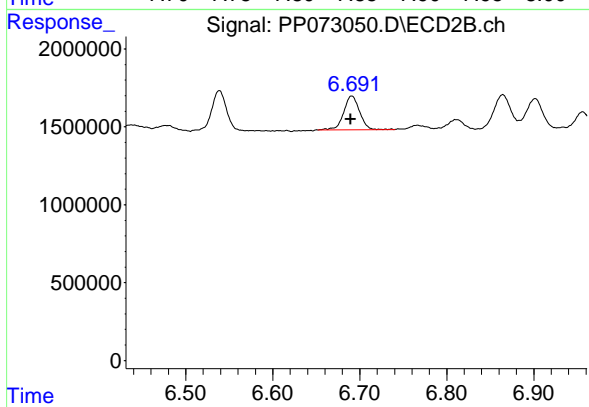
#32 AR-1260-2

R.T.: 6.539 min
 Delta R.T.: 0.000 min
 Response: 3081124
 Conc: 26.46 ng/ml



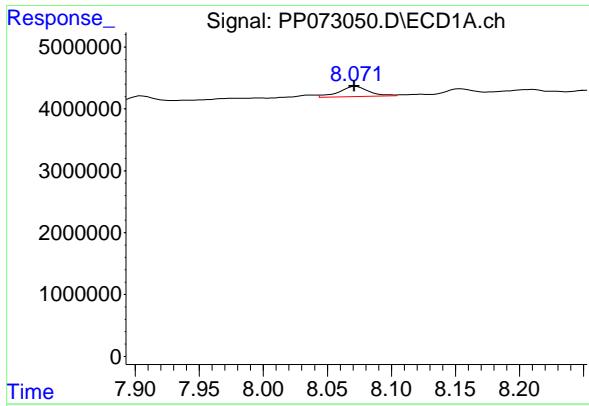
#33 AR-1260-3

R.T.: 7.848 min
 Delta R.T.: 0.000 min
 Response: 2881681
 Conc: 25.24 ng/ml



#33 AR-1260-3

R.T.: 6.691 min
 Delta R.T.: 0.001 min
 Response: 2745337
 Conc: 26.36 ng/ml



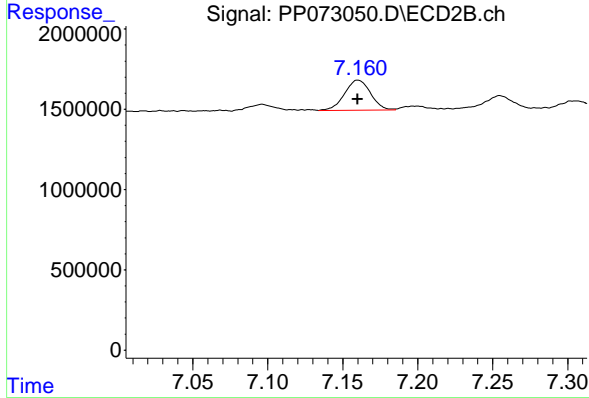
#34 AR-1260-4

R.T.: 8.072 min
 Delta R.T.: 0.001 min
 Response: 2675073
 Conc: 25.96 ng/ml

Instrument : ECD_P
 Client Sample Id : LOD-MDL-WATER-01-QT2-2025

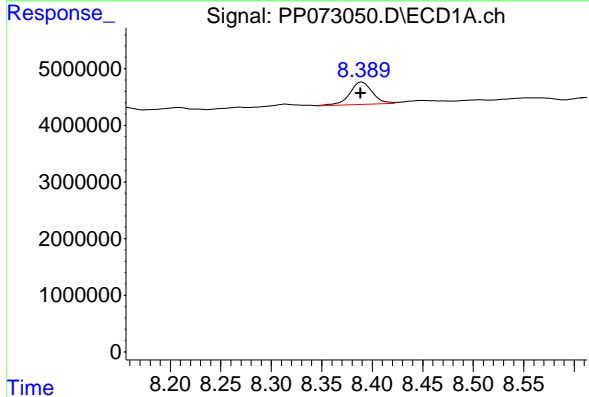
Manual Integrations
 APPROVED

Reviewed By :Yogesh Patel 06/19/2025
 Supervised By :mohammad ahmed 06/20/2025



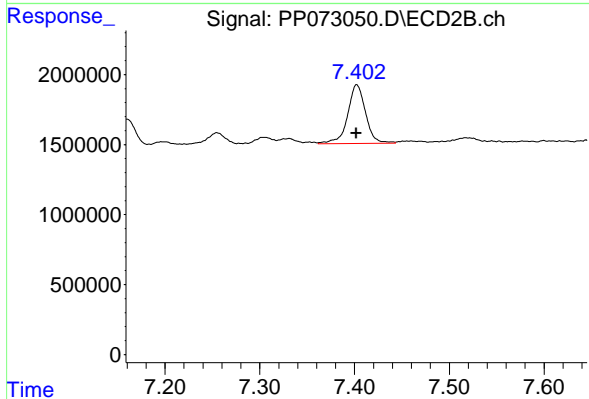
#34 AR-1260-4

R.T.: 7.160 min
 Delta R.T.: 0.000 min
 Response: 2277820
 Conc: 25.96 ng/ml



#35 AR-1260-5

R.T.: 8.390 min
 Delta R.T.: 0.002 min
 Response: 6138211
 Conc: 25.51 ng/ml



#35 AR-1260-5

R.T.: 7.402 min
 Delta R.T.: 0.000 min
 Response: 5558422
 Conc: 26.05 ng/ml