

Data Path : Z:\pestpcbsrv\HPCHEM1\ECD\_P\Data\PP061924\  
 Data File : PP065816.D  
 Signal(s) : Signal #1: ECD1A.ch Signal #2: ECD2B.ch  
 Acq On : 19 Jun 2024 14:53  
 Operator : YP\AJ  
 Sample : AR1248CCC500  
 Misc :  
 ALS Vial : 5 Sample Multiplier: 1

Instrument :  
 ECD\_P  
 ClientSampleId :  
 AR1248CCC500

Integration File signal 1: autoint1.e  
 Integration File signal 2: autoint2.e  
 Quant Time: Jun 19 15:24:49 2024  
 Quant Method : Z:\pestpcbsrv\HPCHEM1\ECD\_P\methods\PP060524.M  
 Quant Title : GC EXTRACTABLES  
 QLast Update : Thu Jun 06 05:25:59 2024  
 Response via : Initial Calibration  
 Integrator: ChemStation

Volume Inj. : 2 µl  
 Signal #1 Phase : ZB-MR1 Signal #2 Phase: ZB-MR2  
 Signal #1 Info : 30Mx0.32mmx 0.50µ Signal #2 Info : 30M x 0.32mm x 0.25µm

Compound	RT#1	RT#2	Resp#1	Resp#2	ng/ml	ng/ml
System Monitoring Compounds						
1) SA Tetrachlo...	4.843	4.066	91527973	129.3E6	48.251	46.288
2) SA Decachlor...	10.854	9.245	91161924	68822125	46.349	46.716
Target Compounds						
3) L1 AR-1016-1	6.021f	5.178	19090366	24494787	293.634	287.216
4) L1 AR-1016-2	6.021	5.199	19090366	24681969	199.327	209.053
5) L1 AR-1016-3	6.107f	5.382	12694516	15219028	207.479	237.144
6) L1 AR-1016-4	6.206	5.418	14280275	32353252	290.379	626.953 #
7) L1 AR-1016-5	6.502f	5.638	31283569	37948508	624.109	575.278
8) L2 AR-1221-1	5.052f	0.000	599139	0	23.478	N.D. #
9) L2 AR-1221-2	0.000	4.376	0	2273210	N.D.	84.210 #
10) L2 AR-1221-3	5.215f	4.449	1486929	2248432	26.461	28.993
11) L3 AR-1232-1	5.215f	4.449	1486929	2248432	32.864	35.570
12) L3 AR-1232-2	5.752f	5.199	8493617	24681969	326.121	442.397 #
13) L3 AR-1232-3	6.021	5.382	19090366	15219028	422.004	505.322
14) L3 AR-1232-4	6.206	5.462	14280275	33615618	611.362	1228.638 #
15) L3 AR-1232-5	6.295f	5.638	29890049	37948508	1522.508	1297.847
16) L4 AR-1242-1	6.021f	5.178	19090366	24494787	349.109	340.866
17) L4 AR-1242-2	6.021	5.199	19090366	24681969	240.732	248.193
18) L4 AR-1242-3	6.107f	5.382	12694516	15219028	251.137	282.940
19) L4 AR-1242-4	6.206f	5.462	14280275	33615618	347.999	631.158 #
20) L4 AR-1242-5	6.946f	5.994	30525817	48987409	699.782	824.450
21) L5 AR-1248-1	6.021f	5.178	19090366	24494787	469.405	458.927
22) L5 AR-1248-2	6.295f	5.418	29890049	32353252	479.597	439.554
23) L5 AR-1248-3	6.502f	5.462	31283569	33615618	464.561	439.892
24) L5 AR-1248-4	6.880	5.638	23476961	37948508	329.755	431.652 #
25) L5 AR-1248-5	6.946f	6.037	30525817	35208078	440.353	441.330
26) L6 AR-1254-1	6.880	5.994	23476961	48987409	299.688	397.571 #
27) L6 AR-1254-2	7.104f	6.141	32465866	15717794	274.828	149.278 #
28) L6 AR-1254-3	7.467f	6.553	18593285	22305515	152.363	140.957
29) L6 AR-1254-4	7.751f	6.781	14089741	14933040	158.442	161.722
30) L6 AR-1254-5	8.172f	7.203	4033041	3889044	41.171	30.385 #
31) L7 AR-1260-1	7.632	6.703	2855161	7941232	29.478	74.833 #
32) L7 AR-1260-2	7.881	6.868	4647103	2394940	41.448	19.420 #
33) L7 AR-1260-3	8.241	7.028	1542704	2018602	17.670	17.405
34) L7 AR-1260-4	8.481	7.544f	2228135	969371	22.234	11.006 #
35) L7 AR-1260-5	8.840	0.000	584398	0	3.099	N.D. #
36) L8 AR-1262-1	8.306	0.000	953116	0	17.789	N.D. #
37) L8 AR-1262-2	8.840	0.000	584398	0	2.755	N.D. #
39) L8 AR-1262-4	9.263	0.000	313543	0	2.588	N.D. #
42) L9 AR-1268-2	9.263	0.000	313543	0	1.327	N.D. #
43) L9 AR-1268-3	9.541	0.000	475850	0	2.343	N.D. #
45) L9 AR-1268-5	10.471	0.000	557781	0	0.839	N.D. #

Data Path : Z:\pestpcbsrv\HPCHEM1\ECD\_P\Data\PP061924\  
 Data File : PP065816.D  
 Signal(s) : Signal #1: ECD1A.ch Signal #2: ECD2B.ch  
 Acq On : 19 Jun 2024 14:53  
 Operator : YP\AJ  
 Sample : AR1248CCC500  
 Misc :  
 ALS Vial : 5 Sample Multiplier: 1

**Instrument :**  
 ECD\_P  
**ClientSampleId :**  
 AR1248CCC500

Integration File signal 1: autoint1.e  
 Integration File signal 2: autoint2.e  
 Quant Time: Jun 19 15:24:49 2024  
 Quant Method : Z:\pestpcbsrv\HPCHEM1\ECD\_P\methods\PP060524.M  
 Quant Title : GC EXTRACTABLES  
 QLast Update : Thu Jun 06 05:25:59 2024  
 Response via : Initial Calibration  
 Integrator: ChemStation

Volume Inj. : 2 µl  
 Signal #1 Phase : ZB-MR1 Signal #2 Phase: ZB-MR2  
 Signal #1 Info : 30Mx0.32mmx 0.50µ Signal #2 Info : 30M x 0.32mm x 0.25µm

Compound	RT#1	RT#2	Resp#1	Resp#2	ng/ml	ng/ml
-----						
-----						

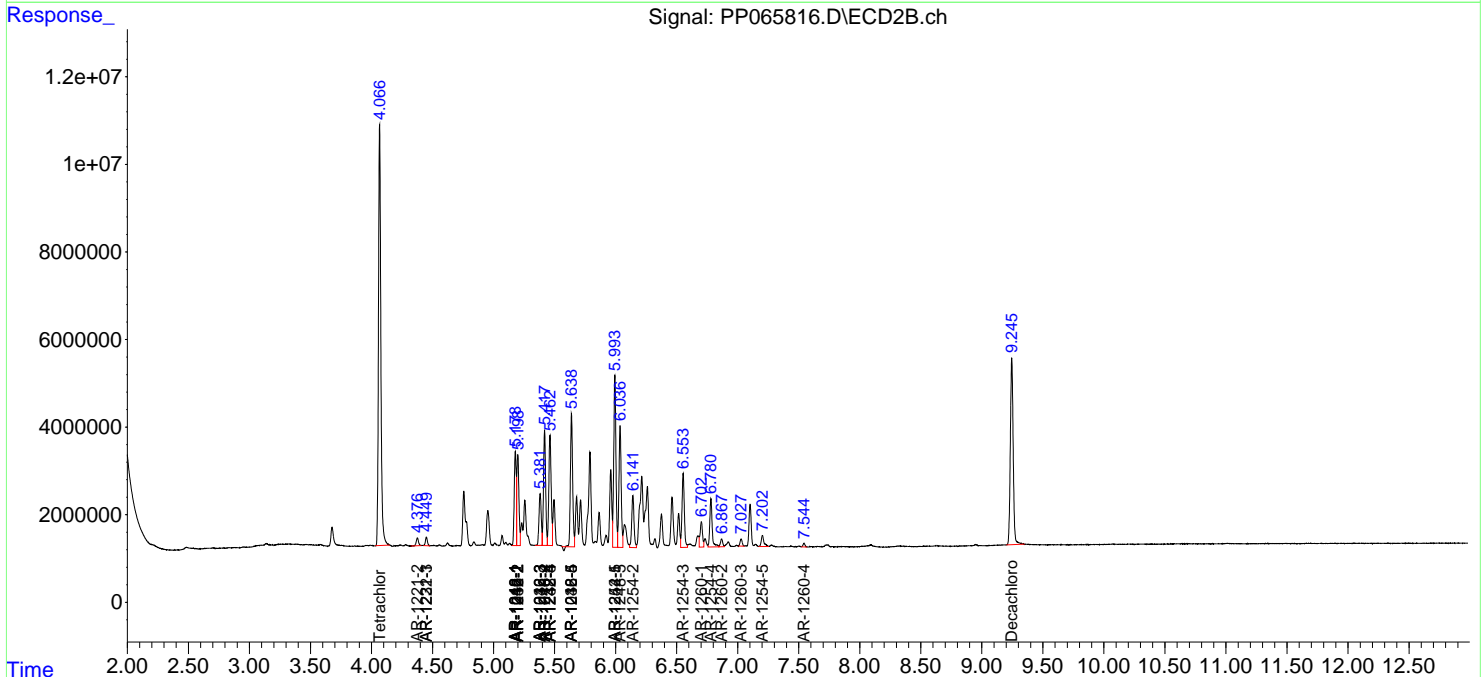
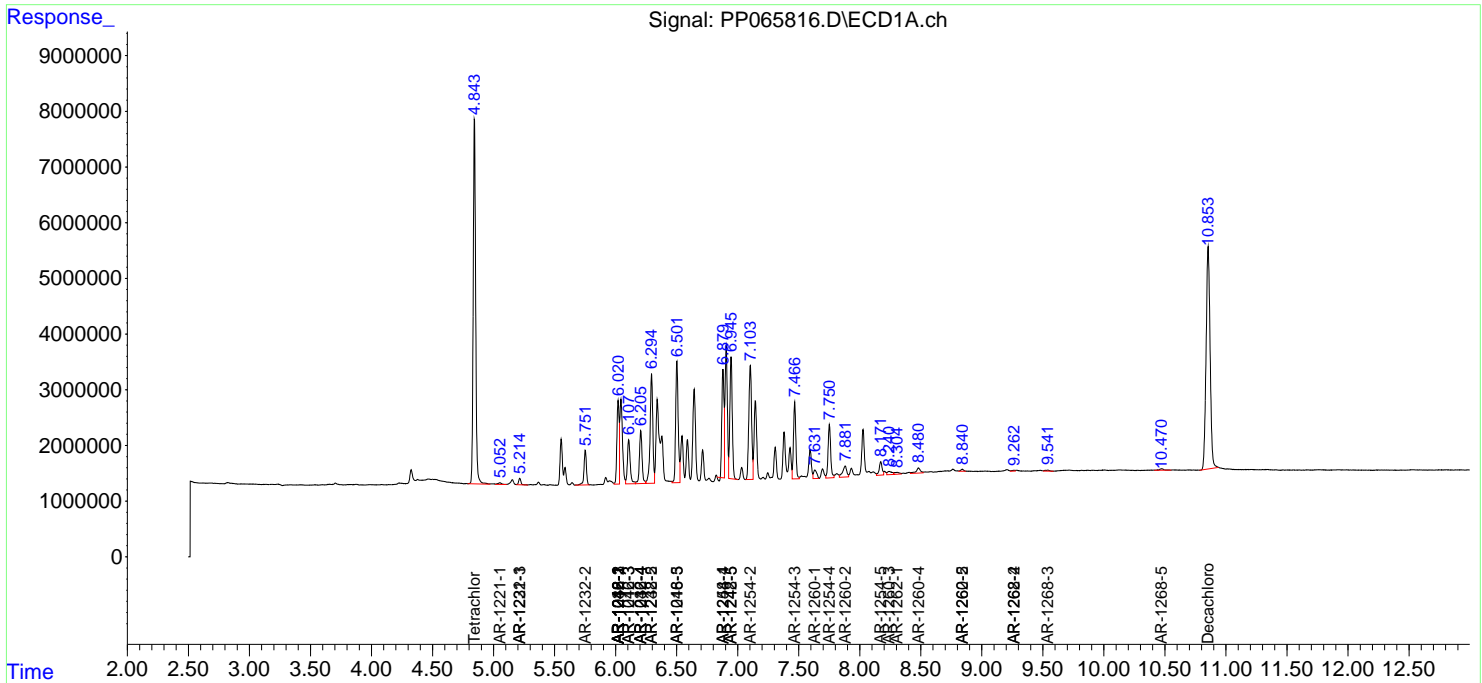
(f)=RT Delta > 1/2 Window (#)=Amounts differ by > 25% (m)=manual int.

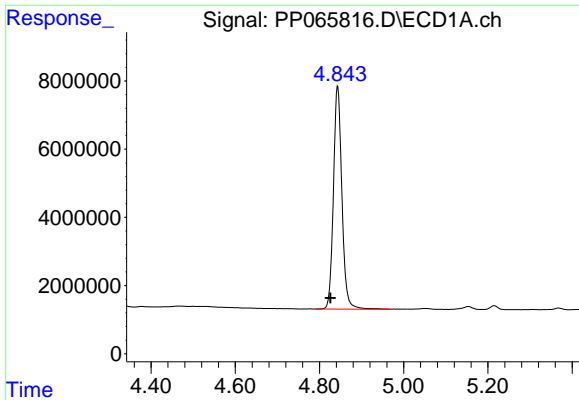
Data Path : Z:\pestpcbsrv\HPCHEM1\ECD\_P\Data\PP061924\  
 Data File : PP065816.D  
 Signal(s) : Signal #1: ECD1A.ch Signal #2: ECD2B.ch  
 Acq On : 19 Jun 2024 14:53  
 Operator : YP\AJ  
 Sample : AR1248CCC500  
 Misc :  
 ALS Vial : 5 Sample Multiplier: 1

**Instrument :**  
 ECD\_P  
**ClientSampleId :**  
 AR1248CCC500

Integration File signal 1: autoint1.e  
 Integration File signal 2: autoint2.e  
 Quant Time: Jun 19 15:24:49 2024  
 Quant Method : Z:\pestpcbsrv\HPCHEM1\ECD\_P\methods\PP060524.M  
 Quant Title : GC EXTRACTABLES  
 QLast Update : Thu Jun 06 05:25:59 2024  
 Response via : Initial Calibration  
 Integrator: ChemStation

Volume Inj. : 2 µl  
 Signal #1 Phase : ZB-MR1 Signal #2 Phase: ZB-MR2  
 Signal #1 Info : 30Mx0.32mmx 0.50µ Signal #2 Info : 30M x 0.32mm x 0.25µm

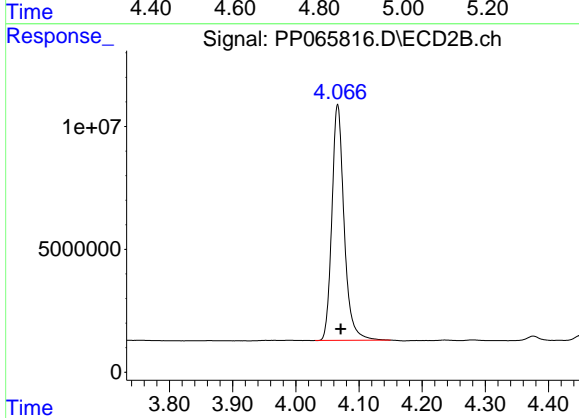




#1 Tetrachloro-m-xylene

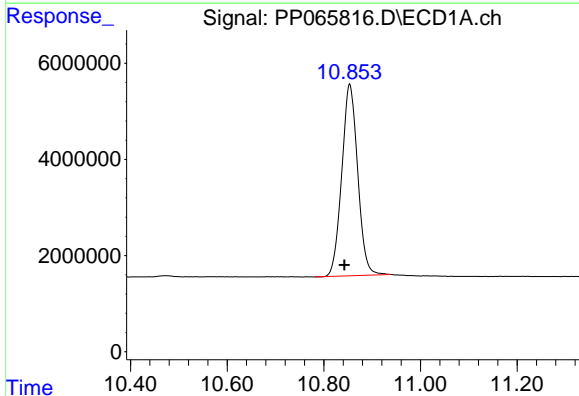
R.T.: 4.843 min  
 Delta R.T.: 0.017 min  
 Response: 91527973  
 Conc: 48.25 ng/ml

Instrument :  
 ECD\_P  
 ClientSampleId :  
 AR1248CCC500



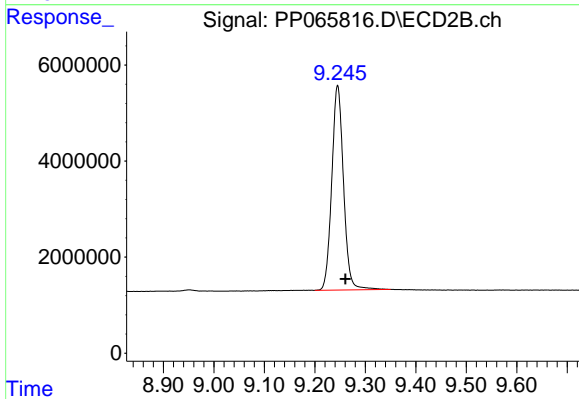
#1 Tetrachloro-m-xylene

R.T.: 4.066 min  
 Delta R.T.: -0.005 min  
 Response: 129251769  
 Conc: 46.29 ng/ml



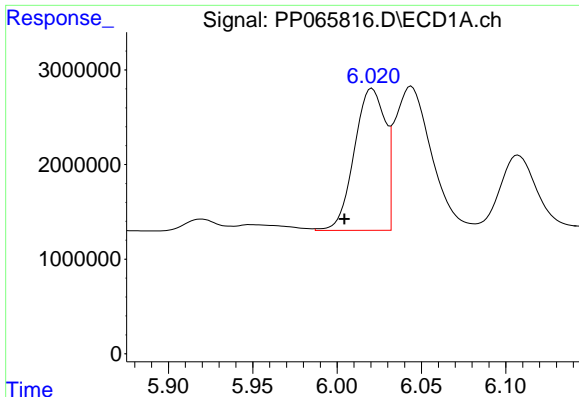
#2 Decachlorobiphenyl

R.T.: 10.854 min  
 Delta R.T.: 0.011 min  
 Response: 91161924  
 Conc: 46.35 ng/ml



#2 Decachlorobiphenyl

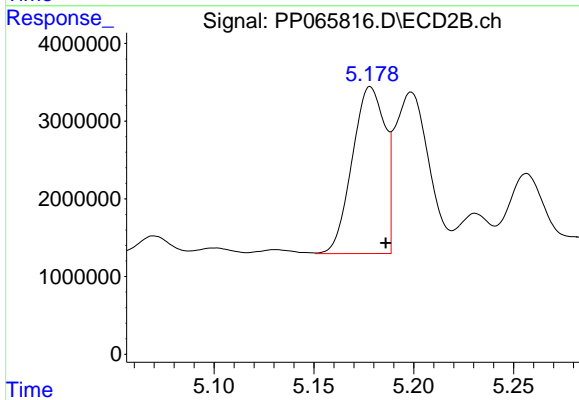
R.T.: 9.245 min  
 Delta R.T.: -0.016 min  
 Response: 68822125  
 Conc: 46.72 ng/ml



#3 AR-1016-1

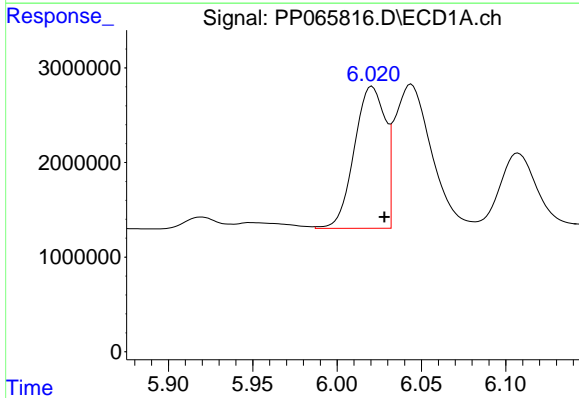
R.T.: 6.021 min  
 Delta R.T.: 0.016 min  
 Response: 19090366  
 Conc: 293.63 ng/ml

Instrument :  
 ECD\_P  
 ClientSampleId :  
 AR1248CCC500



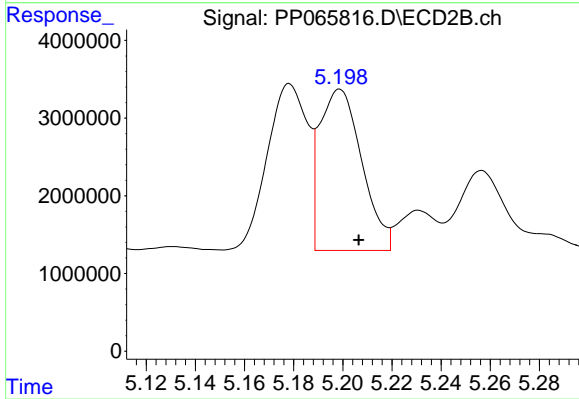
#3 AR-1016-1

R.T.: 5.178 min  
 Delta R.T.: -0.008 min  
 Response: 24494787  
 Conc: 287.22 ng/ml



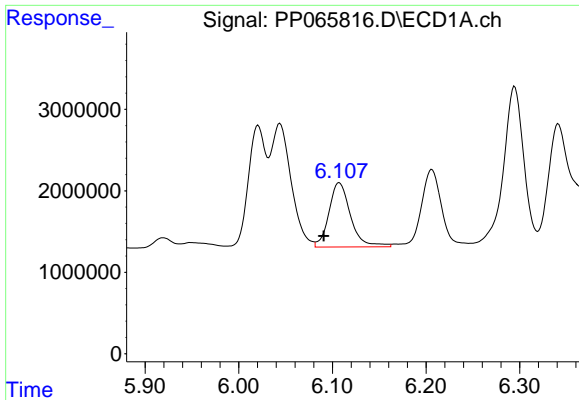
#4 AR-1016-2

R.T.: 6.021 min  
 Delta R.T.: -0.007 min  
 Response: 19090366  
 Conc: 199.33 ng/ml



#4 AR-1016-2

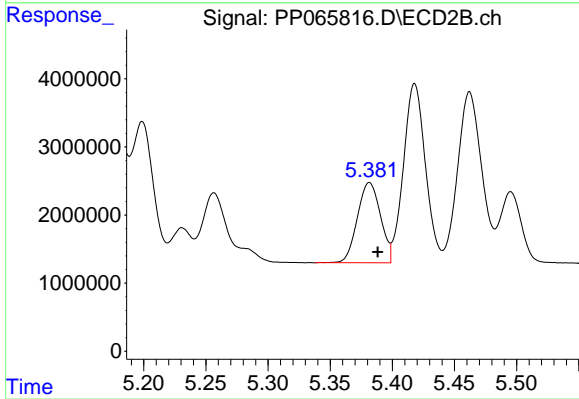
R.T.: 5.199 min  
 Delta R.T.: -0.008 min  
 Response: 24681969  
 Conc: 209.05 ng/ml



#5 AR-1016-3

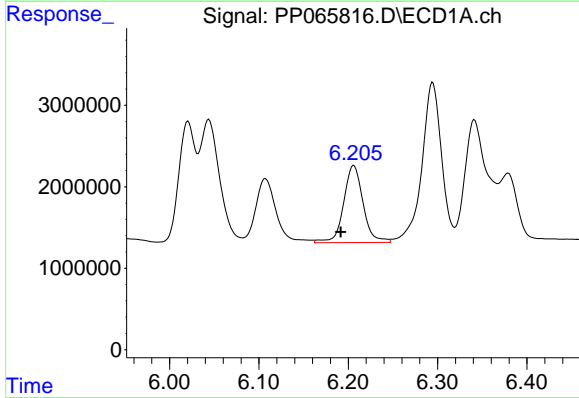
R.T.: 6.107 min  
 Delta R.T.: 0.017 min  
 Response: 12694516  
 Conc: 207.48 ng/ml

Instrument :  
 ECD\_P  
 ClientSampleId :  
 AR1248CCC500



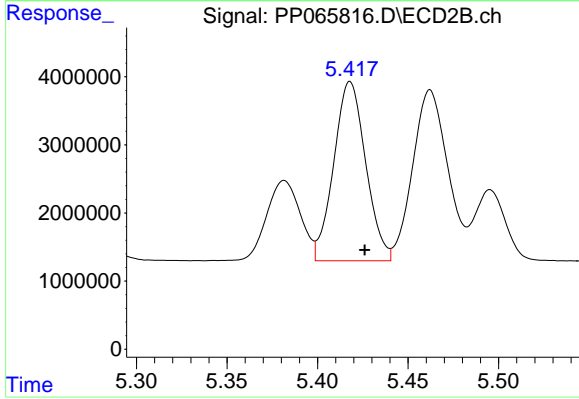
#5 AR-1016-3

R.T.: 5.382 min  
 Delta R.T.: -0.007 min  
 Response: 15219028  
 Conc: 237.14 ng/ml



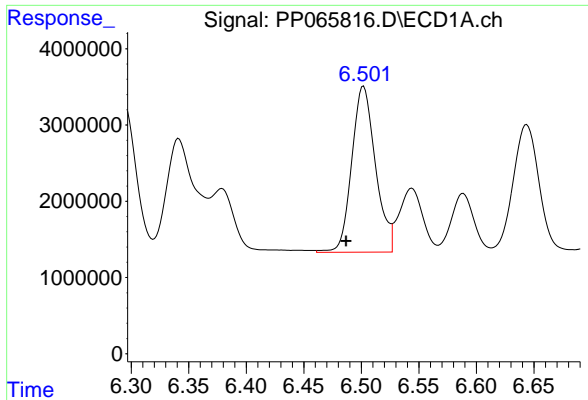
#6 AR-1016-4

R.T.: 6.206 min  
 Delta R.T.: 0.015 min  
 Response: 14280275  
 Conc: 290.38 ng/ml



#6 AR-1016-4

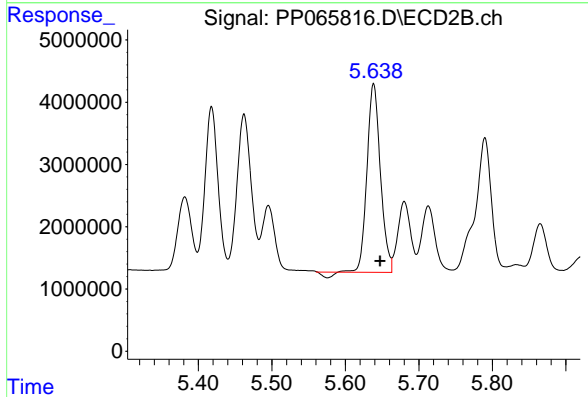
R.T.: 5.418 min  
 Delta R.T.: -0.008 min  
 Response: 32353252  
 Conc: 626.95 ng/ml



#7 AR-1016-5

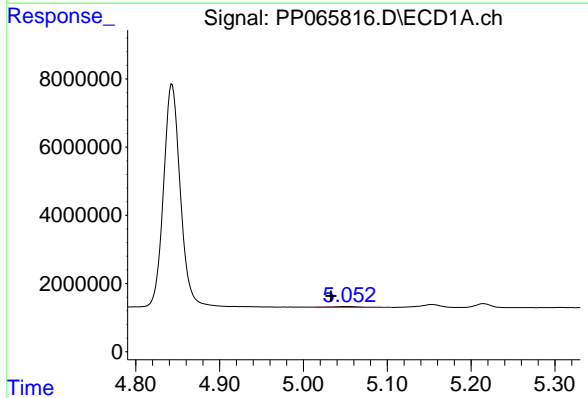
R.T.: 6.502 min  
 Delta R.T.: 0.015 min  
 Response: 31283569  
 Conc: 624.11 ng/ml

Instrument :  
 ECD\_P  
 ClientSampleId :  
 AR1248CCC500



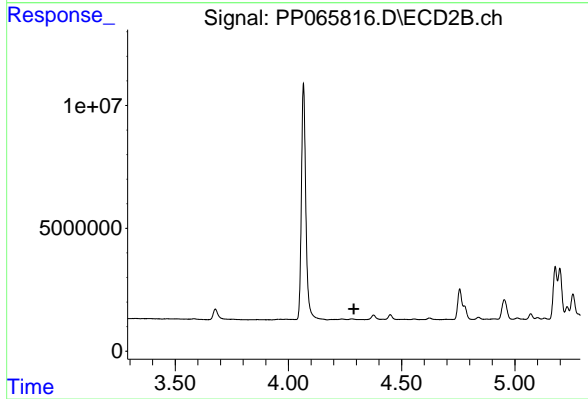
#7 AR-1016-5

R.T.: 5.638 min  
 Delta R.T.: -0.009 min  
 Response: 37948508  
 Conc: 575.28 ng/ml



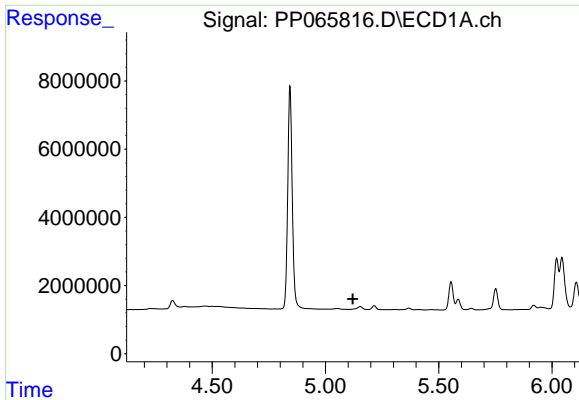
#8 AR-1221-1

R.T.: 5.052 min  
 Delta R.T.: 0.019 min  
 Response: 599139  
 Conc: 23.48 ng/ml



#8 AR-1221-1

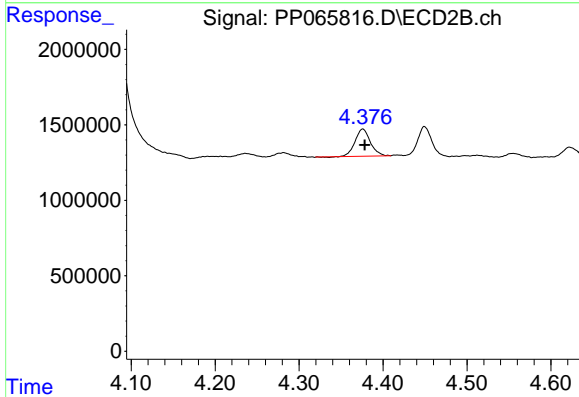
R.T.: 0.000 min  
 Exp R.T.: 4.289 min  
 Response: 0  
 Conc: N.D.



#9 AR-1221-2

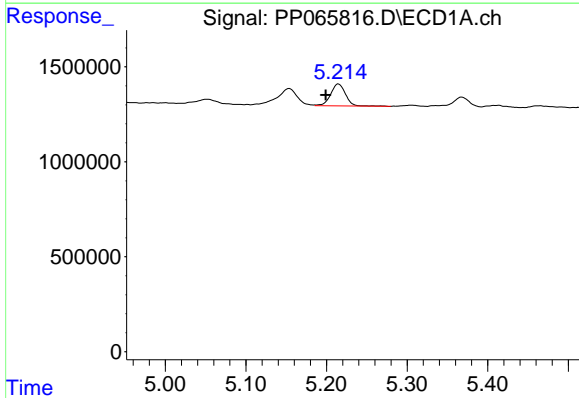
R.T.: 0.000 min  
 Exp R.T.: 5.121 min  
 Response: 0  
 Conc: N.D.

Instrument :  
 ECD\_P  
 ClientSampleId :  
 AR1248CCC500



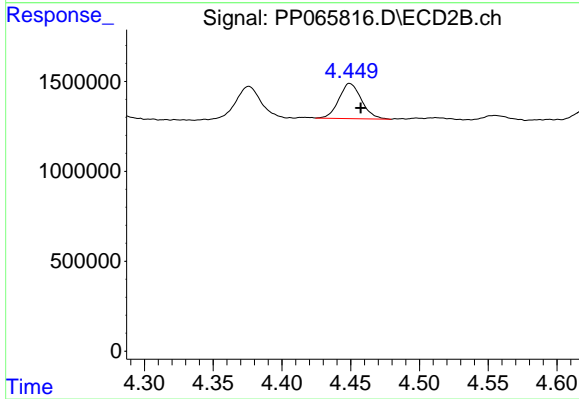
#9 AR-1221-2

R.T.: 4.376 min  
 Delta R.T.: -0.002 min  
 Response: 2273210  
 Conc: 84.21 ng/ml



#10 AR-1221-3

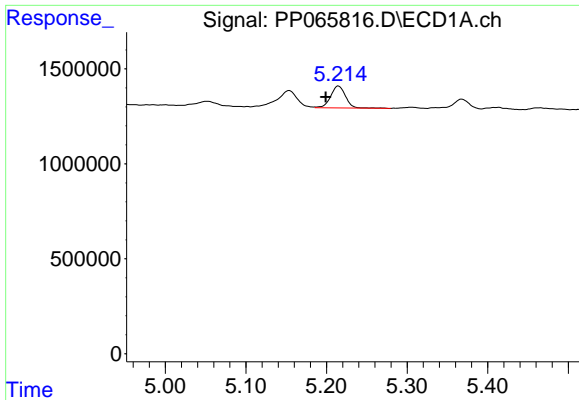
R.T.: 5.215 min  
 Delta R.T.: 0.016 min  
 Response: 1486929  
 Conc: 26.46 ng/ml



#10 AR-1221-3

R.T.: 4.449 min  
 Delta R.T.: -0.008 min  
 Response: 2248432  
 Conc: 28.99 ng/ml

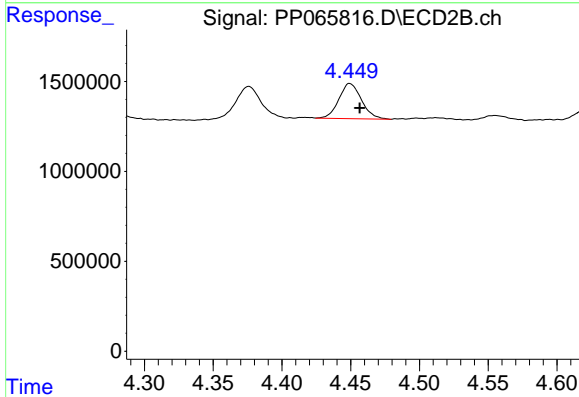




#11 AR-1232-1

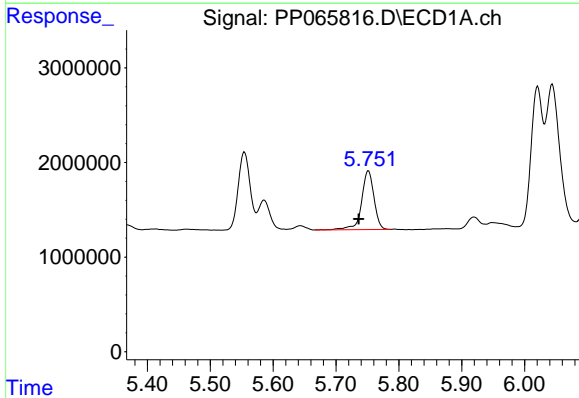
R.T.: 5.215 min  
 Delta R.T.: 0.016 min  
 Response: 1486929  
 Conc: 32.86 ng/ml

Instrument :  
 ECD\_P  
 ClientSampleId :  
 AR1248CCC500



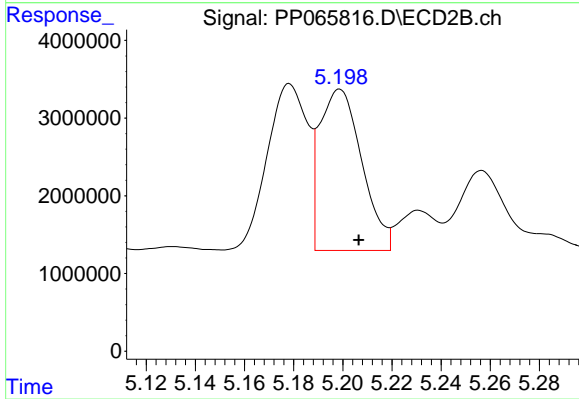
#11 AR-1232-1

R.T.: 4.449 min  
 Delta R.T.: -0.007 min  
 Response: 2248432  
 Conc: 35.57 ng/ml



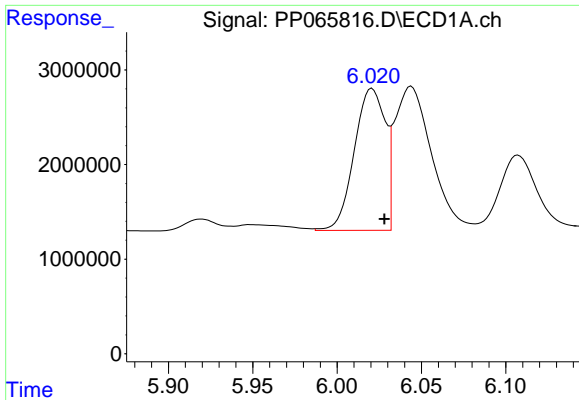
#12 AR-1232-2

R.T.: 5.752 min  
 Delta R.T.: 0.016 min  
 Response: 8493617  
 Conc: 326.12 ng/ml



#12 AR-1232-2

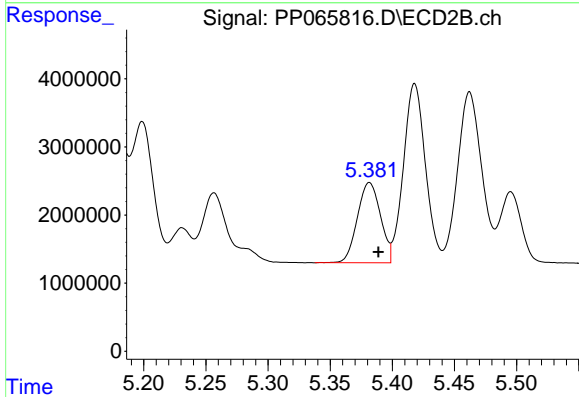
R.T.: 5.199 min  
 Delta R.T.: -0.008 min  
 Response: 24681969  
 Conc: 442.40 ng/ml



#13 AR-1232-3

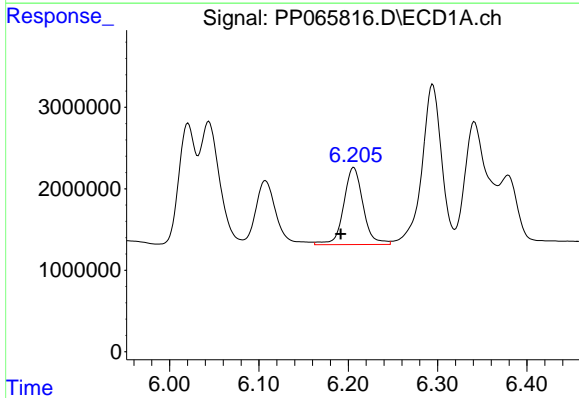
R.T.: 6.021 min  
 Delta R.T.: -0.007 min  
 Response: 19090366  
 Conc: 422.00 ng/ml

Instrument :  
 ECD\_P  
 ClientSampleId :  
 AR1248CCC500



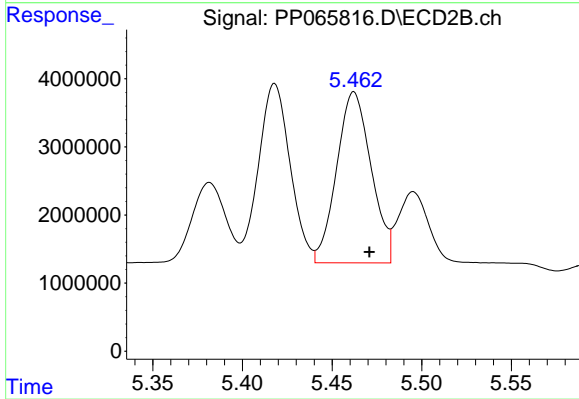
#13 AR-1232-3

R.T.: 5.382 min  
 Delta R.T.: -0.007 min  
 Response: 15219028  
 Conc: 505.32 ng/ml



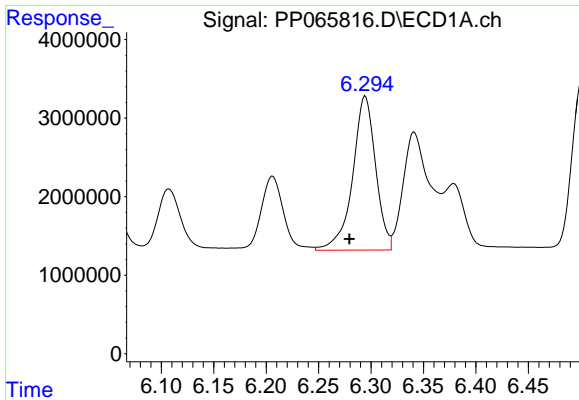
#14 AR-1232-4

R.T.: 6.206 min  
 Delta R.T.: 0.014 min  
 Response: 14280275  
 Conc: 611.36 ng/ml



#14 AR-1232-4

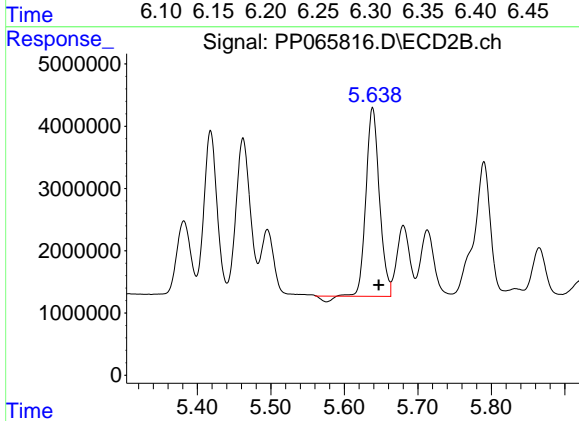
R.T.: 5.462 min  
 Delta R.T.: -0.009 min  
 Response: 33615618  
 Conc: 1228.64 ng/ml



#15 AR-1232-5

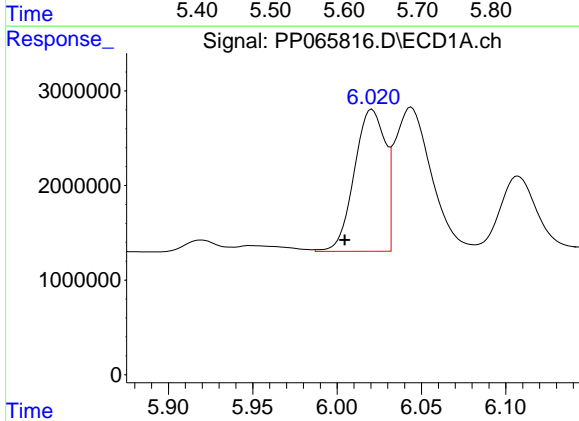
R.T.: 6.295 min  
 Delta R.T.: 0.015 min  
 Response: 29890049  
 Conc: 1522.51 ng/ml

Instrument :  
 ECD\_P  
 ClientSampleId :  
 AR1248CCC500



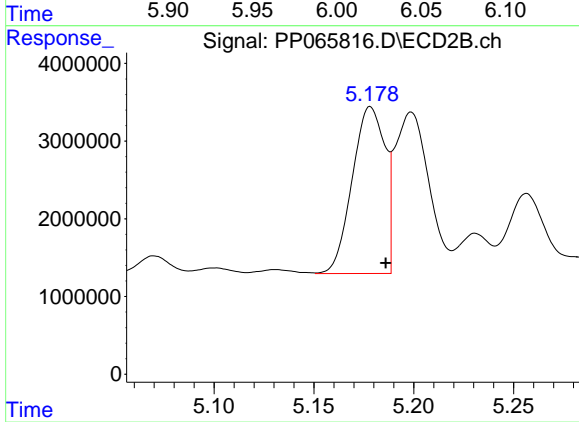
#15 AR-1232-5

R.T.: 5.638 min  
 Delta R.T.: -0.008 min  
 Response: 37948508  
 Conc: 1297.85 ng/ml



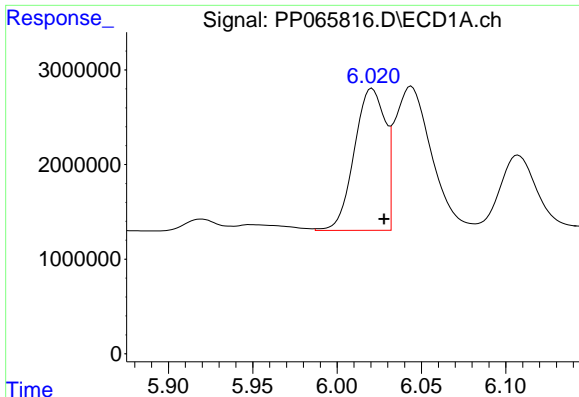
#16 AR-1242-1

R.T.: 6.021 min  
 Delta R.T.: 0.016 min  
 Response: 19090366  
 Conc: 349.11 ng/ml



#16 AR-1242-1

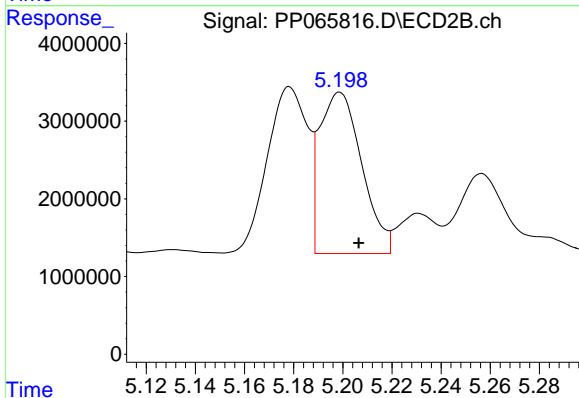
R.T.: 5.178 min  
 Delta R.T.: -0.008 min  
 Response: 24494787  
 Conc: 340.87 ng/ml



#17 AR-1242-2

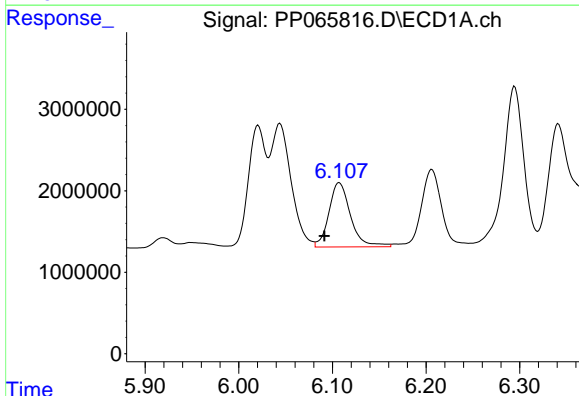
R.T.: 6.021 min  
 Delta R.T.: -0.007 min  
 Response: 19090366  
 Conc: 240.73 ng/ml

Instrument :  
 ECD\_P  
 ClientSampleId :  
 AR1248CCC500



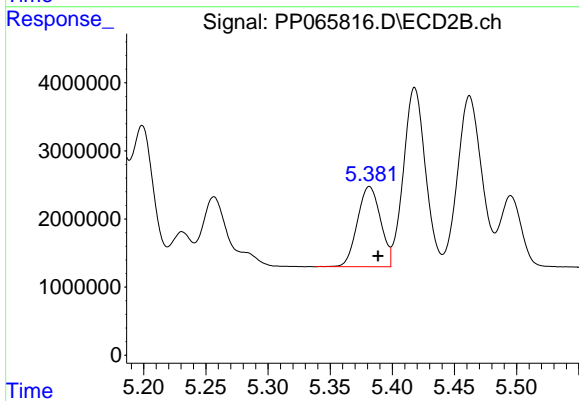
#17 AR-1242-2

R.T.: 5.199 min  
 Delta R.T.: -0.008 min  
 Response: 24681969  
 Conc: 248.19 ng/ml



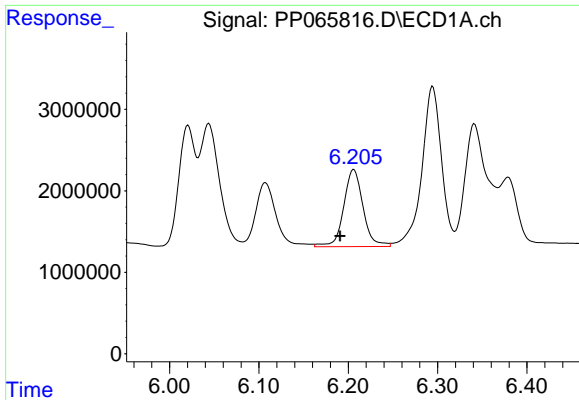
#18 AR-1242-3

R.T.: 6.107 min  
 Delta R.T.: 0.016 min  
 Response: 12694516  
 Conc: 251.14 ng/ml



#18 AR-1242-3

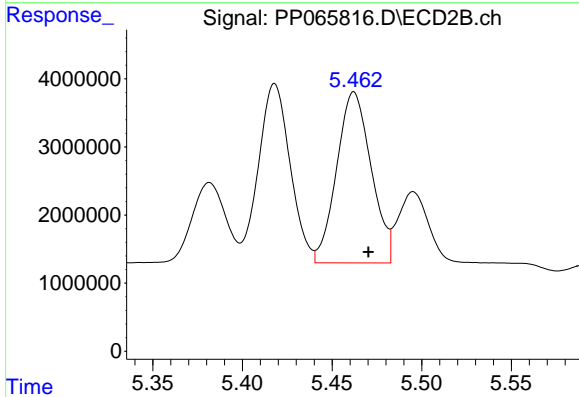
R.T.: 5.382 min  
 Delta R.T.: -0.007 min  
 Response: 15219028  
 Conc: 282.94 ng/ml



#19 AR-1242-4

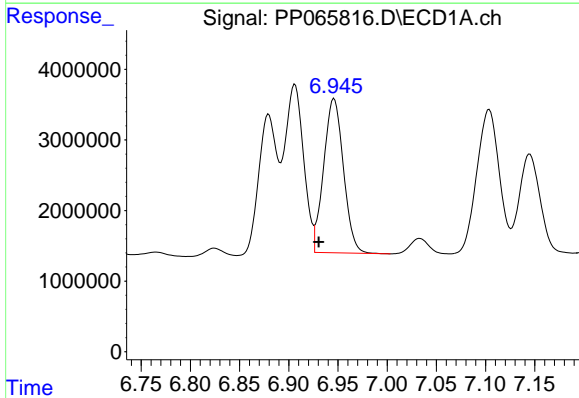
R.T.: 6.206 min  
 Delta R.T.: 0.015 min  
 Response: 14280275  
 Conc: 348.00 ng/ml

Instrument :  
 ECD\_P  
 ClientSampleId :  
 AR1248CCC500



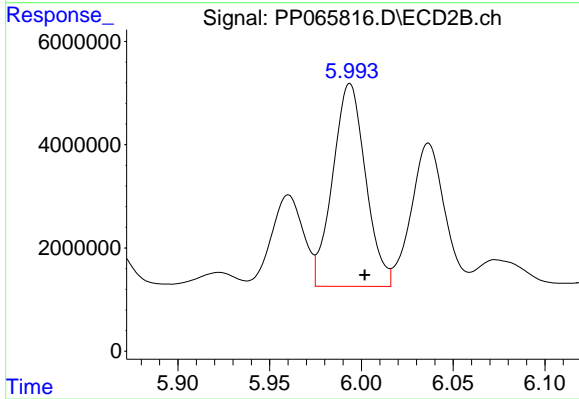
#19 AR-1242-4

R.T.: 5.462 min  
 Delta R.T.: -0.008 min  
 Response: 33615618  
 Conc: 631.16 ng/ml



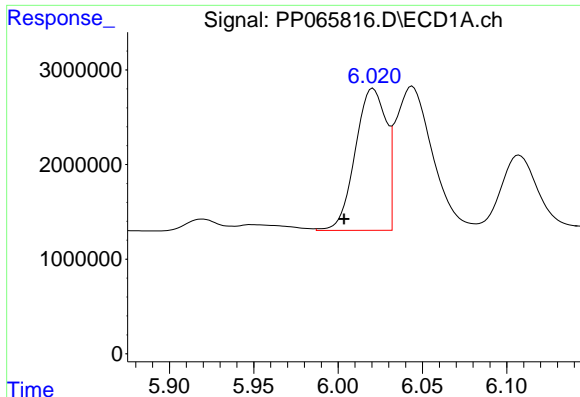
#20 AR-1242-5

R.T.: 6.946 min  
 Delta R.T.: 0.016 min  
 Response: 30525817  
 Conc: 699.78 ng/ml



#20 AR-1242-5

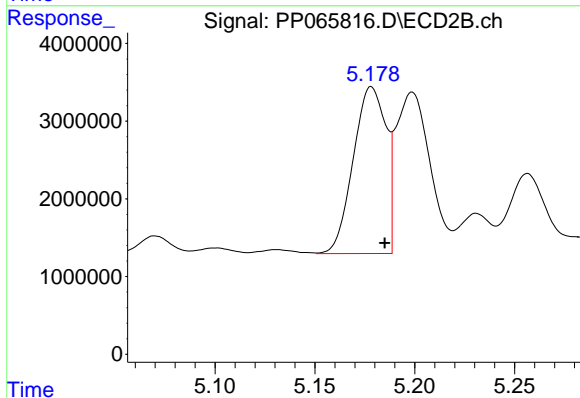
R.T.: 5.994 min  
 Delta R.T.: -0.008 min  
 Response: 48987409  
 Conc: 824.45 ng/ml



#21 AR-1248-1

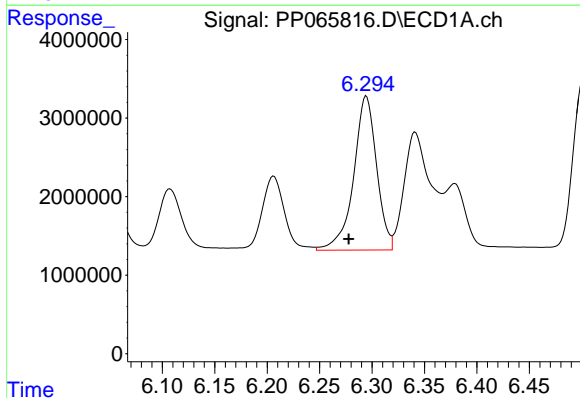
R.T.: 6.021 min  
 Delta R.T.: 0.017 min  
 Response: 19090366  
 Conc: 469.40 ng/ml

Instrument :  
 ECD\_P  
 ClientSampleId :  
 AR1248CCC500



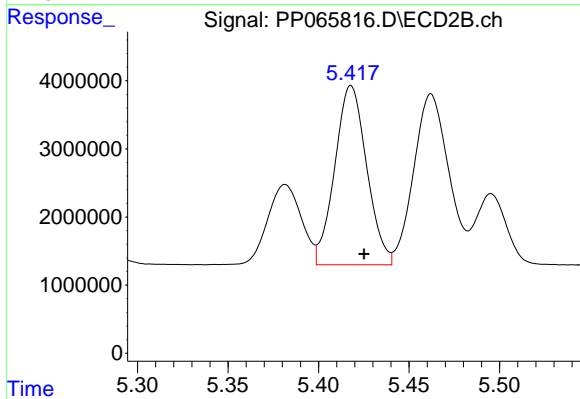
#21 AR-1248-1

R.T.: 5.178 min  
 Delta R.T.: -0.007 min  
 Response: 24494787  
 Conc: 458.93 ng/ml



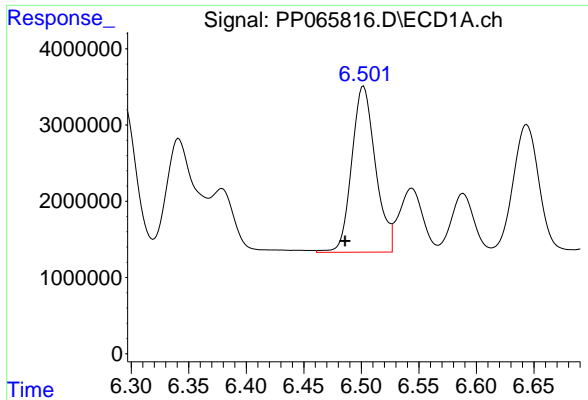
#22 AR-1248-2

R.T.: 6.295 min  
 Delta R.T.: 0.017 min  
 Response: 29890049  
 Conc: 479.60 ng/ml



#22 AR-1248-2

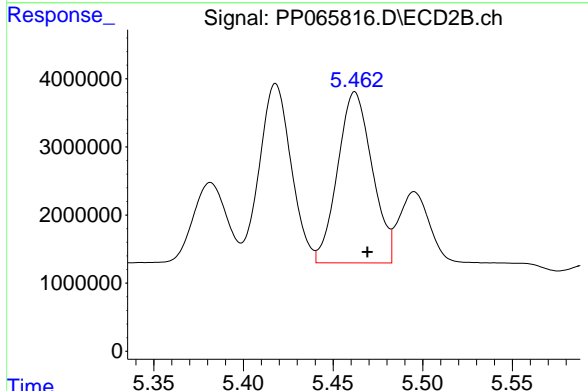
R.T.: 5.418 min  
 Delta R.T.: -0.007 min  
 Response: 32353252  
 Conc: 439.55 ng/ml



#23 AR-1248-3

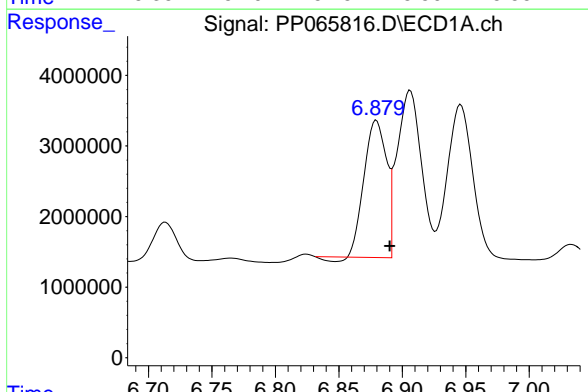
R.T.: 6.502 min  
 Delta R.T.: 0.016 min  
 Response: 31283569  
 Conc: 464.56 ng/ml

Instrument :  
 ECD\_P  
 ClientSampleId :  
 AR1248CCC500



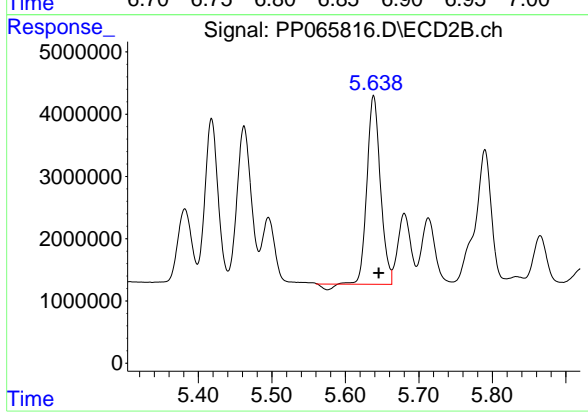
#23 AR-1248-3

R.T.: 5.462 min  
 Delta R.T.: -0.007 min  
 Response: 33615618  
 Conc: 439.89 ng/ml



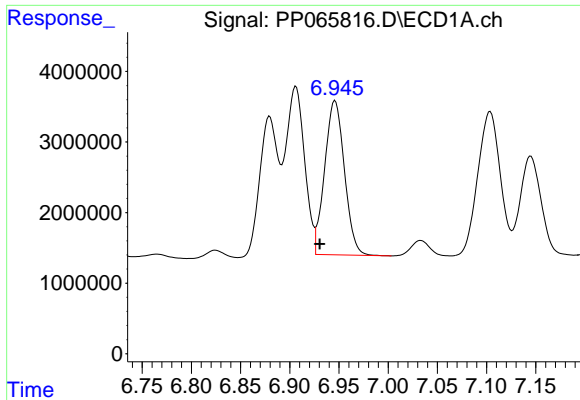
#24 AR-1248-4

R.T.: 6.880 min  
 Delta R.T.: -0.010 min  
 Response: 23476961  
 Conc: 329.75 ng/ml



#24 AR-1248-4

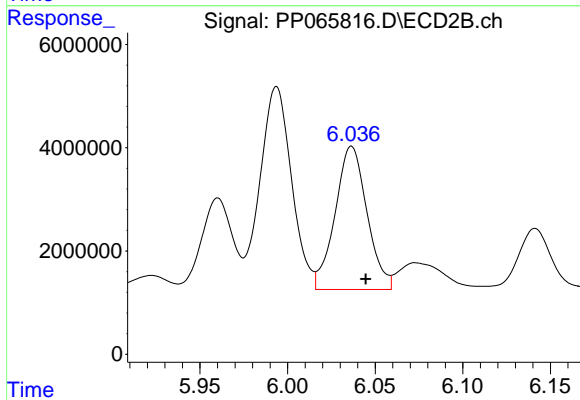
R.T.: 5.638 min  
 Delta R.T.: -0.007 min  
 Response: 37948508  
 Conc: 431.65 ng/ml



#25 AR-1248-5

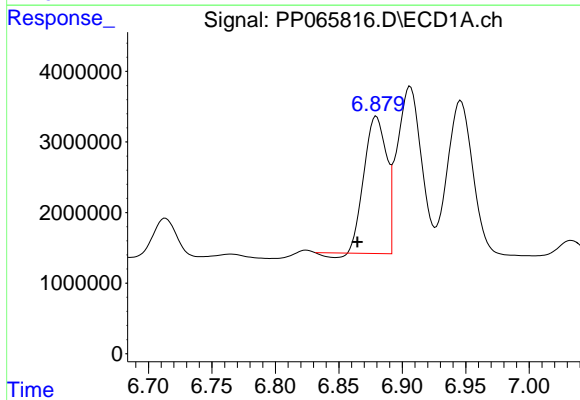
R.T.: 6.946 min  
 Delta R.T.: 0.016 min  
 Response: 30525817  
 Conc: 440.35 ng/ml

Instrument :  
 ECD\_P  
 ClientSampleId :  
 AR1248CCC500



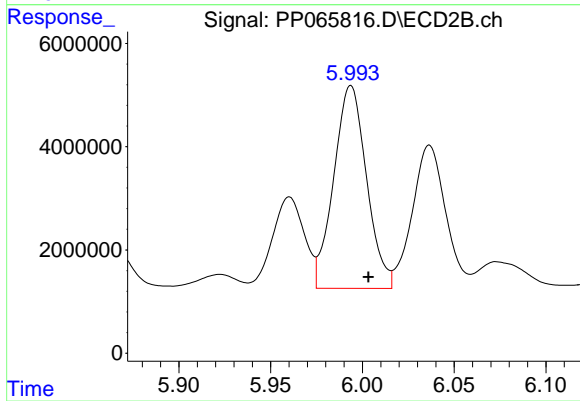
#25 AR-1248-5

R.T.: 6.037 min  
 Delta R.T.: -0.008 min  
 Response: 35208078  
 Conc: 441.33 ng/ml



#26 AR-1254-1

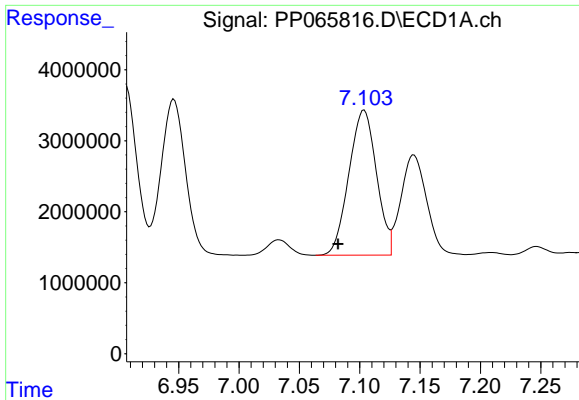
R.T.: 6.880 min  
 Delta R.T.: 0.015 min  
 Response: 23476961  
 Conc: 299.69 ng/ml



#26 AR-1254-1

R.T.: 5.994 min  
 Delta R.T.: -0.010 min  
 Response: 48987409  
 Conc: 397.57 ng/ml

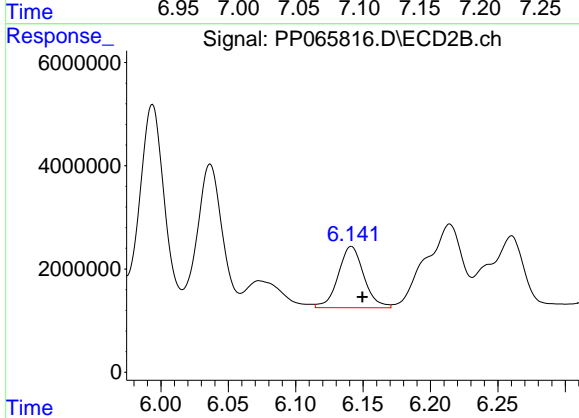




#27 AR-1254-2

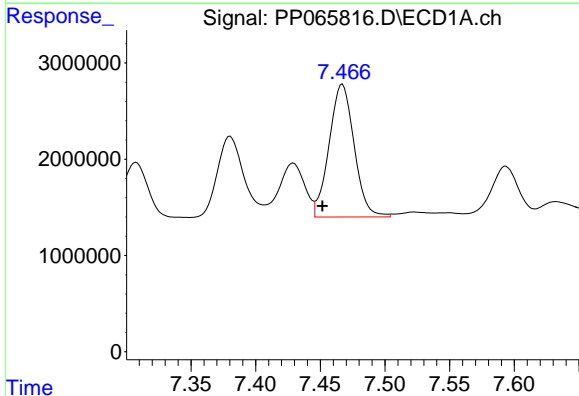
R.T.: 7.104 min  
Delta R.T.: 0.022 min  
Response: 32465866  
Conc: 274.83 ng/ml

Instrument :  
ECD\_P  
ClientSampleId :  
AR1248CCC500



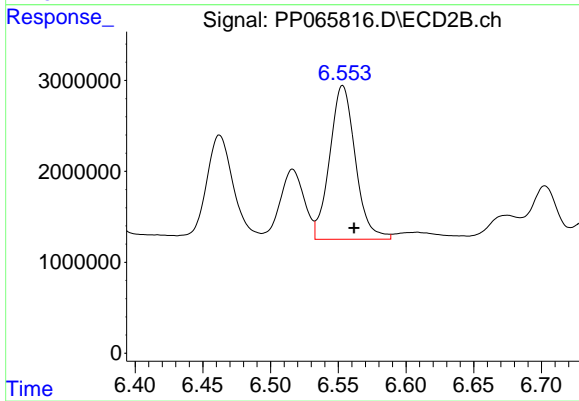
#27 AR-1254-2

R.T.: 6.141 min  
Delta R.T.: -0.008 min  
Response: 15717794  
Conc: 149.28 ng/ml



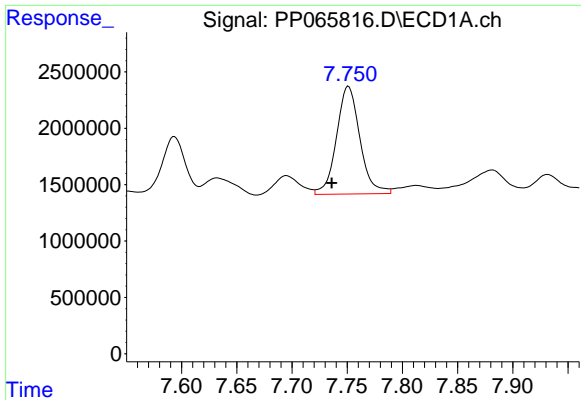
#28 AR-1254-3

R.T.: 7.467 min  
Delta R.T.: 0.015 min  
Response: 18593285  
Conc: 152.36 ng/ml



#28 AR-1254-3

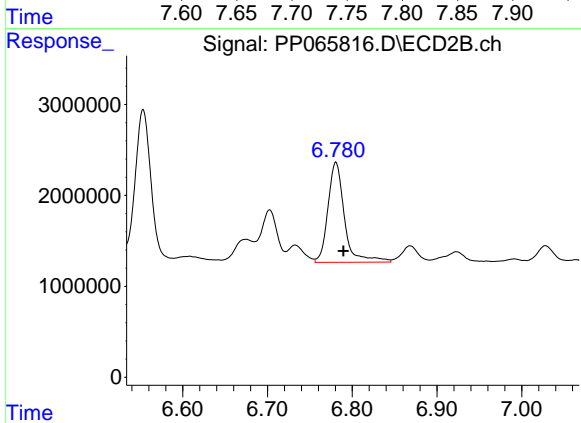
R.T.: 6.553 min  
Delta R.T.: -0.008 min  
Response: 22305515  
Conc: 140.96 ng/ml



#29 AR-1254-4

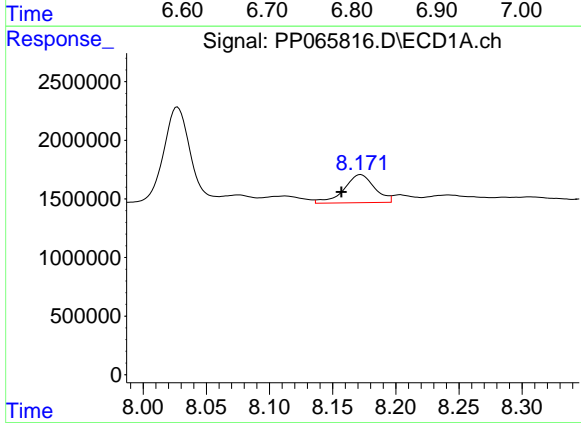
R.T.: 7.751 min  
 Delta R.T.: 0.015 min  
 Response: 14089741  
 Conc: 158.44 ng/ml

Instrument :  
 ECD\_P  
 ClientSampleId :  
 AR1248CCC500



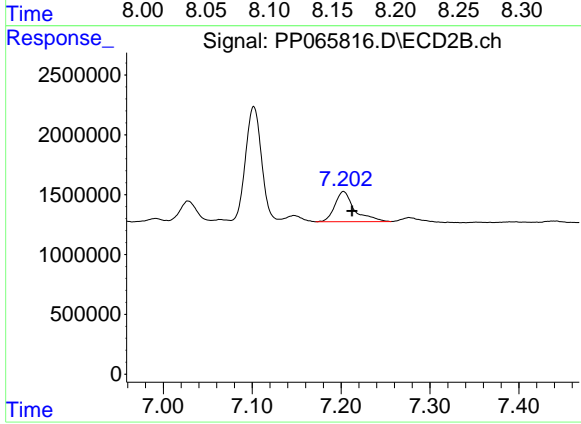
#29 AR-1254-4

R.T.: 6.781 min  
 Delta R.T.: -0.009 min  
 Response: 14933040  
 Conc: 161.72 ng/ml



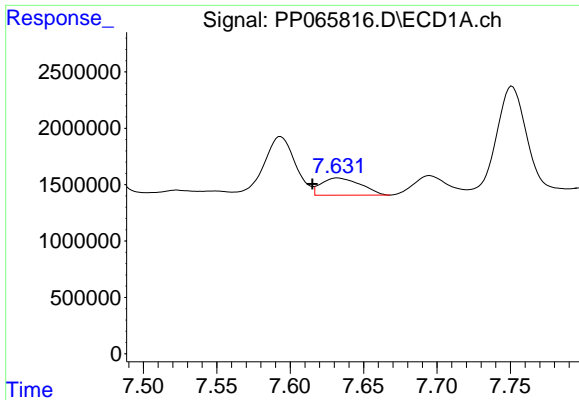
#30 AR-1254-5

R.T.: 8.172 min  
 Delta R.T.: 0.015 min  
 Response: 4033041  
 Conc: 41.17 ng/ml



#30 AR-1254-5

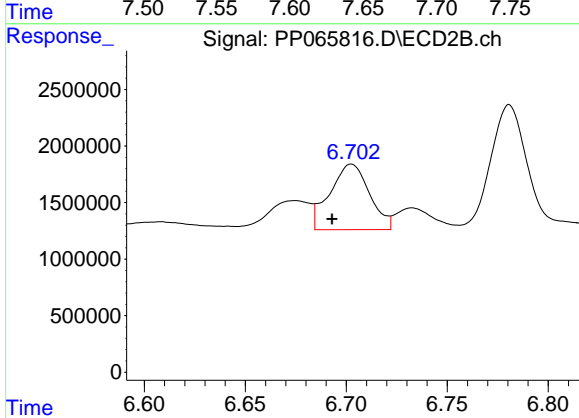
R.T.: 7.203 min  
 Delta R.T.: -0.009 min  
 Response: 3889044  
 Conc: 30.39 ng/ml



#31 AR-1260-1

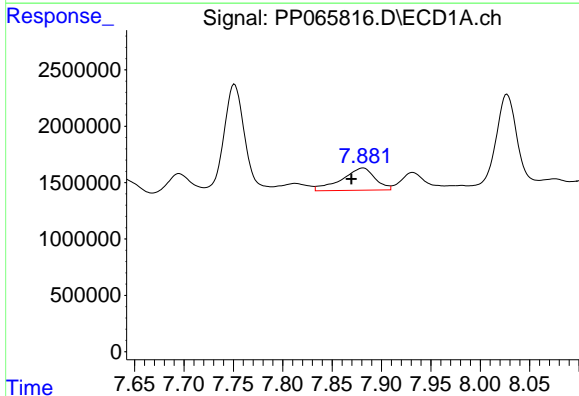
R.T.: 7.632 min  
 Delta R.T.: 0.017 min  
 Response: 2855161  
 Conc: 29.48 ng/ml

Instrument :  
 ECD\_P  
 ClientSampleId :  
 AR1248CCC500



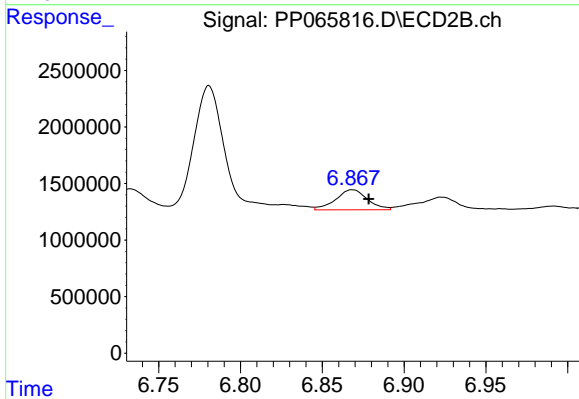
#31 AR-1260-1

R.T.: 6.703 min  
 Delta R.T.: 0.010 min  
 Response: 7941232  
 Conc: 74.83 ng/ml



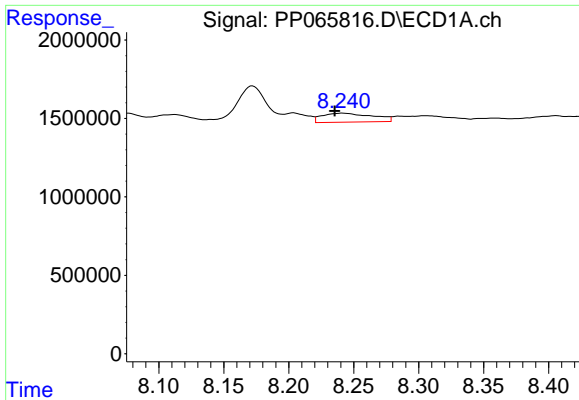
#32 AR-1260-2

R.T.: 7.881 min  
 Delta R.T.: 0.012 min  
 Response: 4647103  
 Conc: 41.45 ng/ml



#32 AR-1260-2

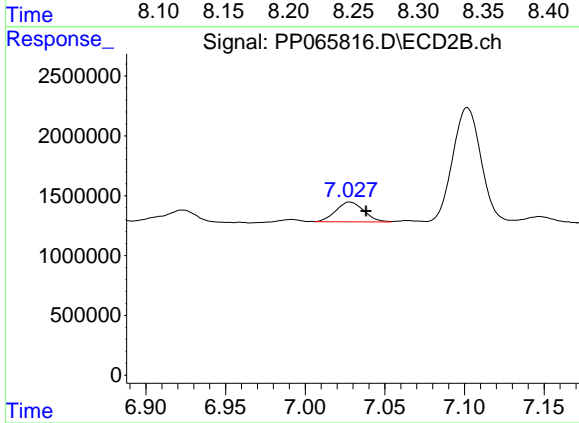
R.T.: 6.868 min  
 Delta R.T.: -0.010 min  
 Response: 2394940  
 Conc: 19.42 ng/ml



#33 AR-1260-3

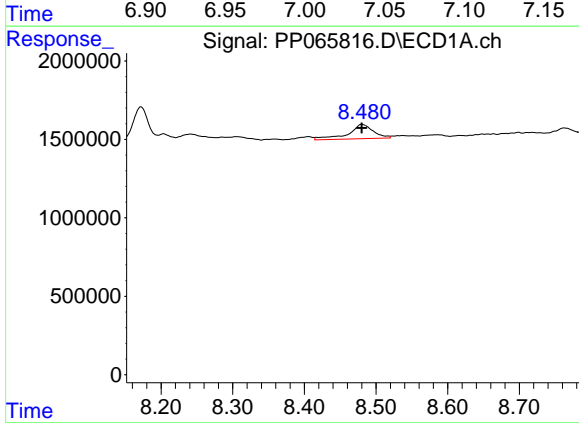
R.T.: 8.241 min  
 Delta R.T.: 0.006 min  
 Response: 1542704  
 Conc: 17.67 ng/ml

Instrument :  
 ECD\_P  
 ClientSampleId :  
 AR1248CCC500



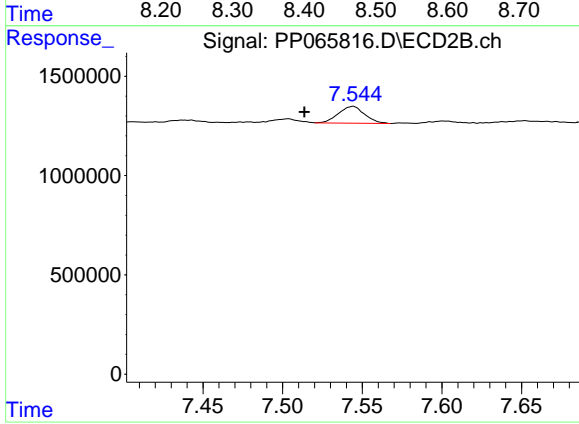
#33 AR-1260-3

R.T.: 7.028 min  
 Delta R.T.: -0.010 min  
 Response: 2018602  
 Conc: 17.41 ng/ml



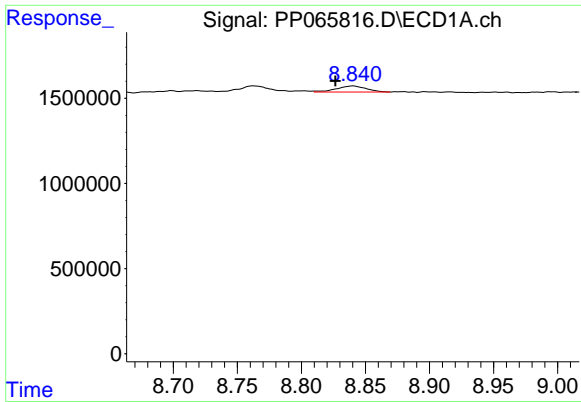
#34 AR-1260-4

R.T.: 8.481 min  
 Delta R.T.: 0.000 min  
 Response: 2228135  
 Conc: 22.23 ng/ml



#34 AR-1260-4

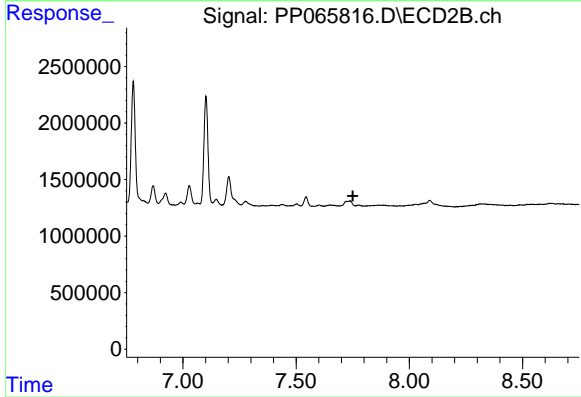
R.T.: 7.544 min  
 Delta R.T.: 0.030 min  
 Response: 969371  
 Conc: 11.01 ng/ml



#35 AR-1260-5

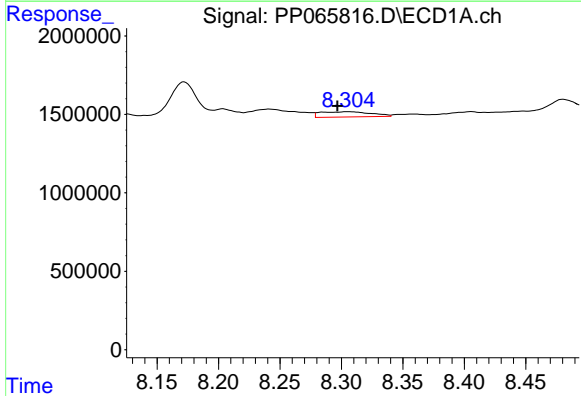
R.T.: 8.840 min  
 Delta R.T.: 0.013 min  
 Response: 584398  
 Conc: 3.10 ng/ml

Instrument :  
 ECD\_P  
 ClientSampleId :  
 AR1248CCC500



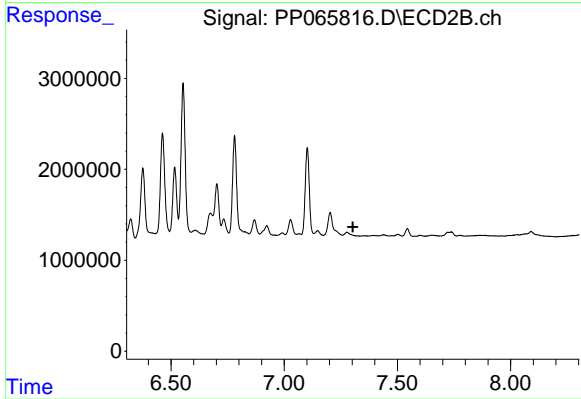
#35 AR-1260-5

R.T.: 0.000 min  
 Exp R.T. : 7.751 min  
 Response: 0  
 Conc: N.D.



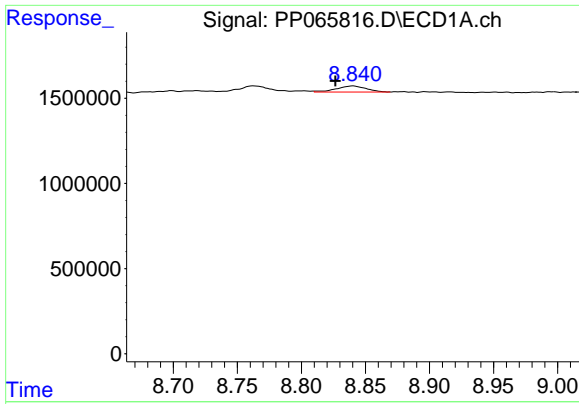
#36 AR-1262-1

R.T.: 8.306 min  
 Delta R.T.: 0.009 min  
 Response: 953116  
 Conc: 17.79 ng/ml



#36 AR-1262-1

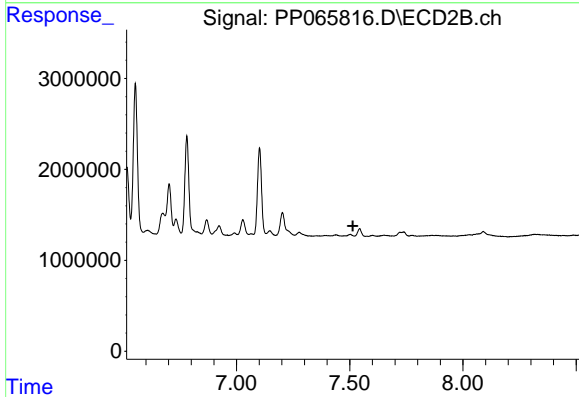
R.T.: 0.000 min  
 Exp R.T. : 7.303 min  
 Response: 0  
 Conc: N.D.



#37 AR-1262-2

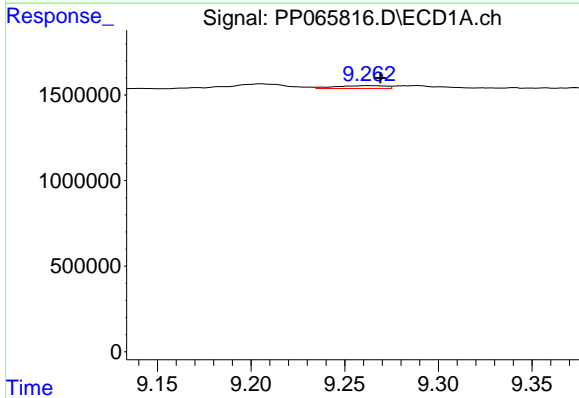
R.T.: 8.840 min  
 Delta R.T.: 0.014 min  
 Response: 584398  
 Conc: 2.75 ng/ml

Instrument :  
 ECD\_P  
 ClientSampleId :  
 AR1248CCC500



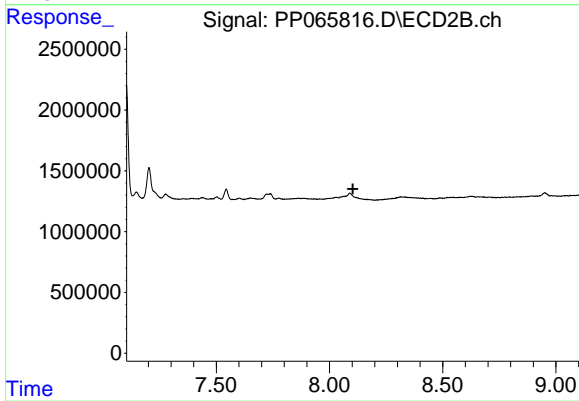
#37 AR-1262-2

R.T.: 0.000 min  
 Exp R.T. : 7.514 min  
 Response: 0  
 Conc: N.D.



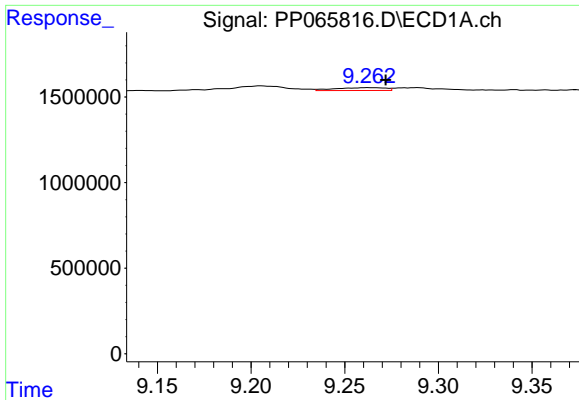
#39 AR-1262-4

R.T.: 9.263 min  
 Delta R.T.: -0.006 min  
 Response: 313543  
 Conc: 2.59 ng/ml



#39 AR-1262-4

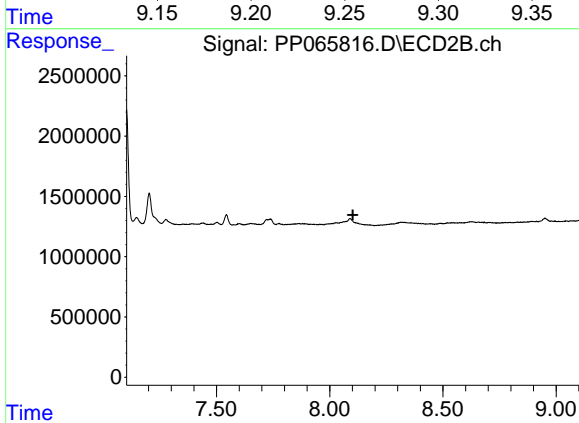
R.T.: 0.000 min  
 Exp R.T. : 8.103 min  
 Response: 0  
 Conc: N.D.



#42 AR-1268-2

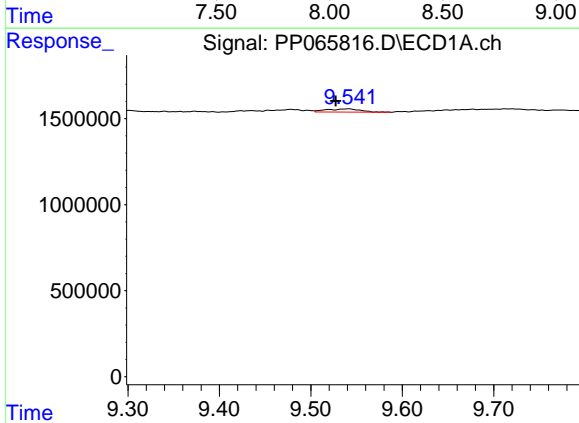
R.T.: 9.263 min  
 Delta R.T.: -0.008 min  
 Response: 313543  
 Conc: 1.33 ng/ml

Instrument : ECD\_P  
 ClientSampleId : AR1248CCC500



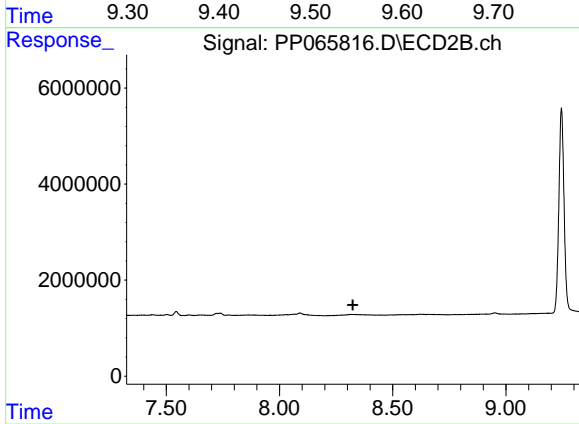
#42 AR-1268-2

R.T.: 0.000 min  
 Exp R.T. : 8.102 min  
 Response: 0  
 Conc: N.D.



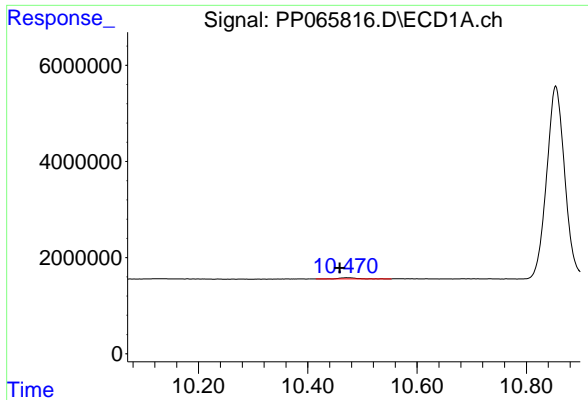
#43 AR-1268-3

R.T.: 9.541 min  
 Delta R.T.: 0.013 min  
 Response: 475850  
 Conc: 2.34 ng/ml



#43 AR-1268-3

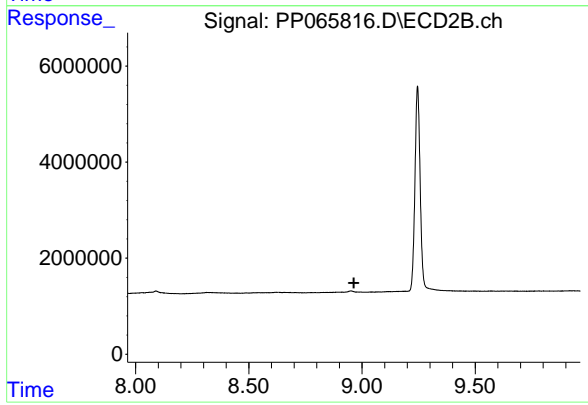
R.T.: 0.000 min  
 Exp R.T. : 8.324 min  
 Response: 0  
 Conc: N.D.



#45 AR-1268-5

R.T.: 10.471 min  
Delta R.T.: 0.013 min  
Response: 557781  
Conc: 0.84 ng/ml

Instrument :  
ECD\_P  
ClientSampleId :  
AR1248CCC500



#45 AR-1268-5

R.T.: 0.000 min  
Exp R.T. : 8.964 min  
Response: 0  
Conc: N.D.