

Data Path : Z:\pestpcbsrv\HPCHEM1\ECD_P\Data\PP061925\
 Data File : PP073081.D
 Signal(s) : Signal #1: ECD1A.ch Signal #2: ECD2B.ch
 Acq On : 19 Jun 2025 14:38
 Operator : YP\AJ
 Sample : Q2126-03
 Misc : AR1262 MDL 25 PPB
 ALS Vial : 14 Sample Multiplier: 1

Instrument :
 ECD_P
ClientSampleId :
 MDL-SOIL-03-QT2-2025

Manual Integrations
APPROVED
 Reviewed By :Yogesh Patel 06/20/2025
 Supervised By :mohammad ahmed 06/23/2025

Integration File signal 1: autoint1.e
 Integration File signal 2: autoint2.e
 Quant Time: Jun 19 23:25:48 2025
 Quant Method : Z:\pestpcbsrv\HPCHEM1\ECD_P\methods\PP061725.M
 Quant Title : GC EXTRACTABLES
 QLast Update : Wed Jun 18 08:17:15 2025
 Response via : Initial Calibration
 Integrator: ChemStation

Volume Inj. : 2 µl
 Signal #1 Phase : ZB-MR1 Signal #2 Phase: ZB-MR2
 Signal #1 Info : 30Mx0.32mmx 0.50µ Signal #2 Info : 30M x 0.32mm x 0.25µm

Compound	RT#1	RT#2	Resp#1	Resp#2	ng/ml	ng/ml

System Monitoring Compounds						
1) SA Tetrachlo...	4.496	3.790	42552029	36720075	20.159	20.380
2) SA Decachlor...	10.193	8.801	39003465	29677167	22.824	22.235
Target Compounds						
36) L8 AR-1262-1	8.075	6.904	3058658	3662902	20.663	25.355
37) L8 AR-1262-2	8.393	7.162	5688923	3105960	17.976	25.411 #
38) L8 AR-1262-3	8.709	7.684	5714924	2637202	26.709m	23.400
39) L8 AR-1262-4	8.778	7.749	1958442	4436149	12.427m	24.194 #
40) L8 AR-1262-5	9.443	8.247	3000853	2137501	26.826m	24.687

(f)=RT Delta > 1/2 Window (#)=Amounts differ by > 25% (m)=manual int.

Data Path : Z:\pestpcbsrv\HPCHEM1\ECD_P\Data\PP061925\
 Data File : PP073081.D
 Signal(s) : Signal #1: ECD1A.ch Signal #2: ECD2B.ch
 Acq On : 19 Jun 2025 14:38
 Operator : YP\AJ
 Sample : Q2126-03
 Misc : AR1262 MDL 25 PPB
 ALS Vial : 14 Sample Multiplier: 1

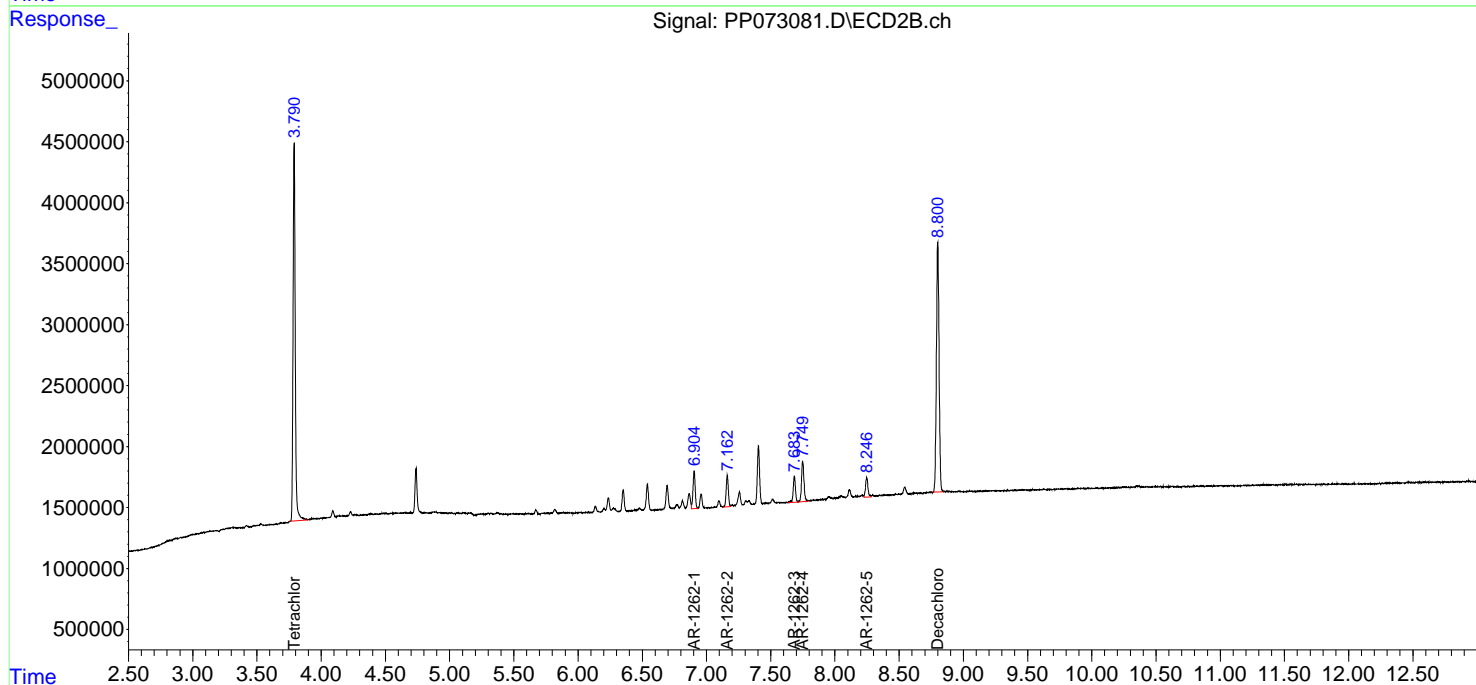
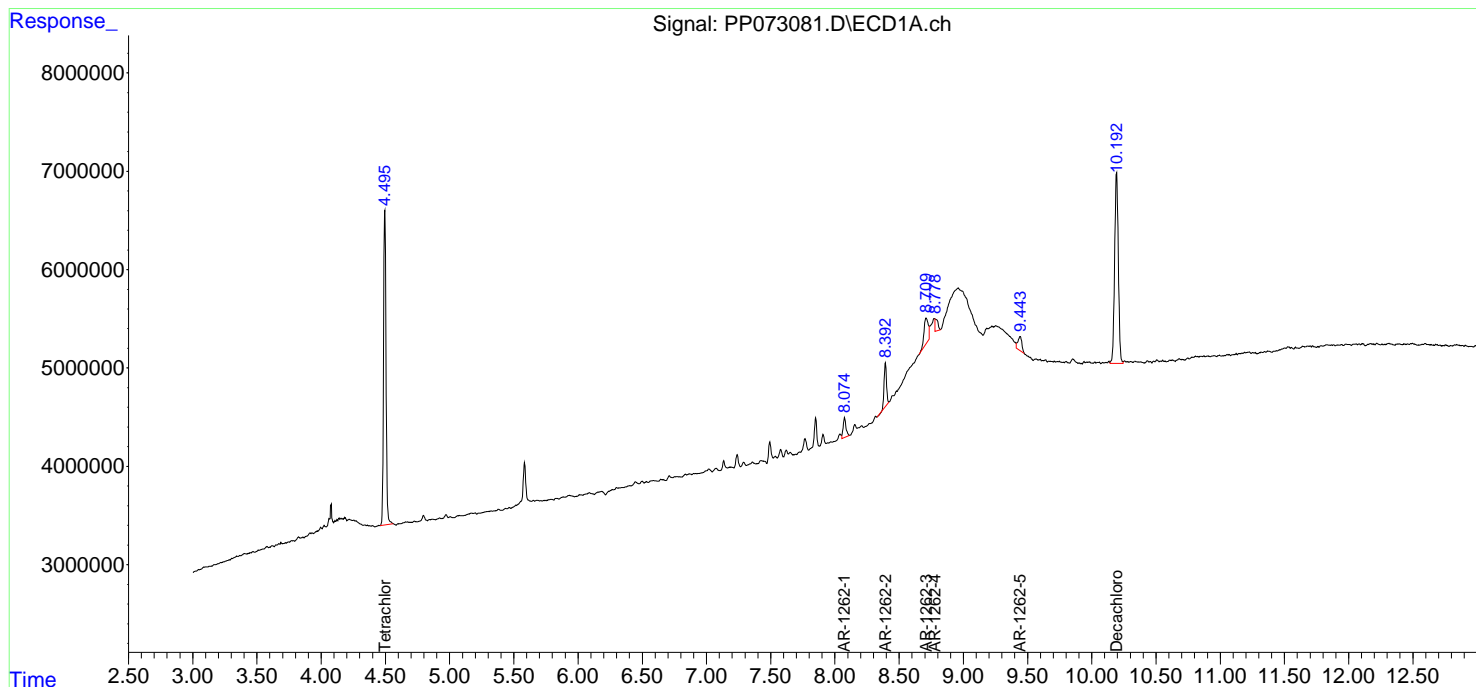
Instrument :
 ECD_P
ClientSampleId :
 MDL-SOIL-03-QT2-2025

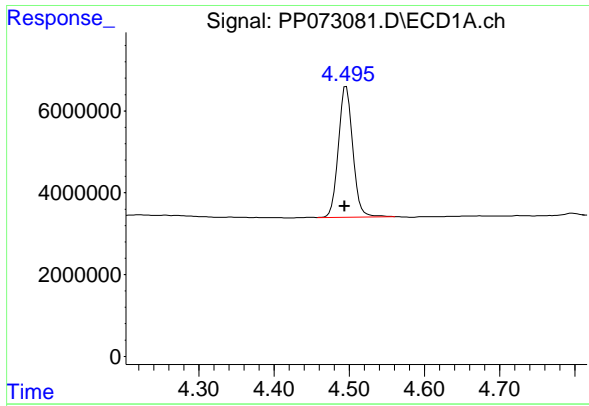
Manual Integrations
APPROVED

Reviewed By :Yogesh Patel 06/20/2025
 Supervised By :mohammad ahmed 06/23/2025

Integration File signal 1: autoint1.e
 Integration File signal 2: autoint2.e
 Quant Time: Jun 19 23:25:48 2025
 Quant Method : Z:\pestpcbsrv\HPCHEM1\ECD_P\methods\PP061725.M
 Quant Title : GC EXTRACTABLES
 QLast Update : Wed Jun 18 08:17:15 2025
 Response via : Initial Calibration
 Integrator: ChemStation

Volume Inj. : 2 µl
 Signal #1 Phase : ZB-MR1 Signal #2 Phase: ZB-MR2
 Signal #1 Info : 30Mx0.32mmx 0.50µm Signal #2 Info : 30M x 0.32mm x 0.25µm





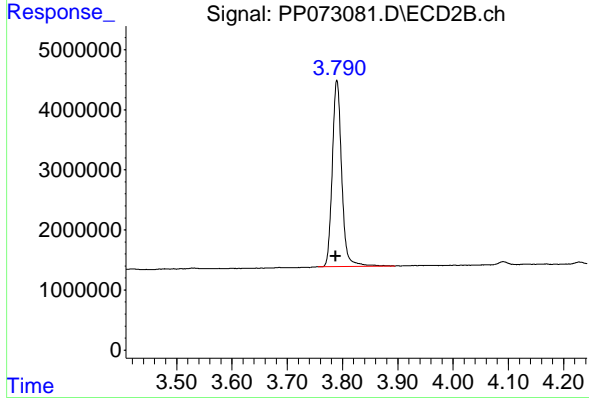
#1 Tetrachloro-m-xylene

R.T.: 4.496 min
 Delta R.T.: 0.002 min
 Response: 42552029
 Conc: 20.16 ng/ml

Instrument : ECD_P
 Client Sample Id : MDL-SOIL-03-QT2-2025

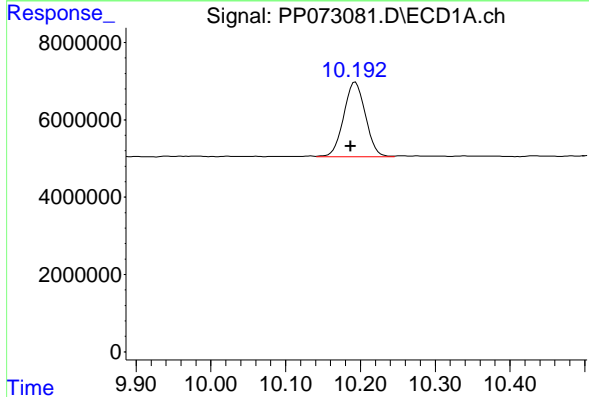
Manual Integrations
 APPROVED

Reviewed By :Yogesh Patel 06/20/2025
 Supervised By :mohammad ahmed 06/23/2025



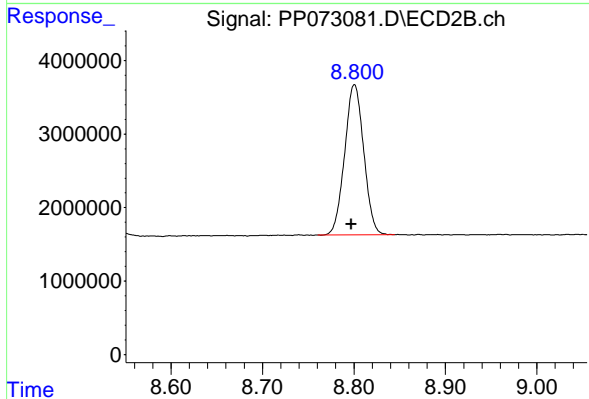
#1 Tetrachloro-m-xylene

R.T.: 3.790 min
 Delta R.T.: 0.002 min
 Response: 36720075
 Conc: 20.38 ng/ml



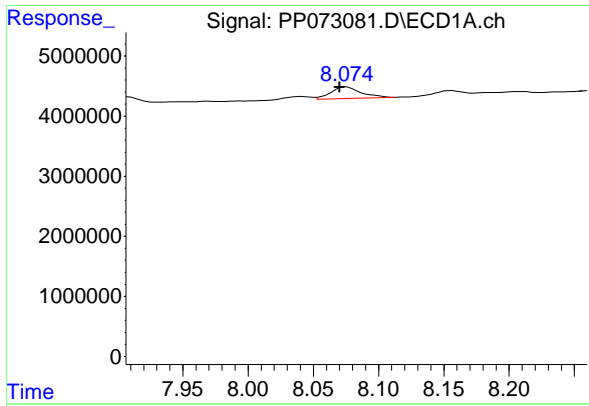
#2 Decachlorobiphenyl

R.T.: 10.193 min
 Delta R.T.: 0.006 min
 Response: 39003465
 Conc: 22.82 ng/ml



#2 Decachlorobiphenyl

R.T.: 8.801 min
 Delta R.T.: 0.004 min
 Response: 29677167
 Conc: 22.23 ng/ml



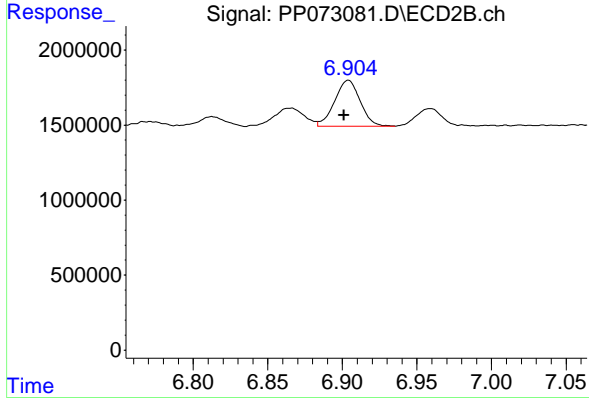
#36 AR-1262-1

R.T.: 8.075 min
 Delta R.T.: 0.005 min
 Response: 3058658
 Conc: 20.66 ng/ml

Instrument : ECD_P
 Client Sample Id : MDL-SOIL-03-QT2-2025

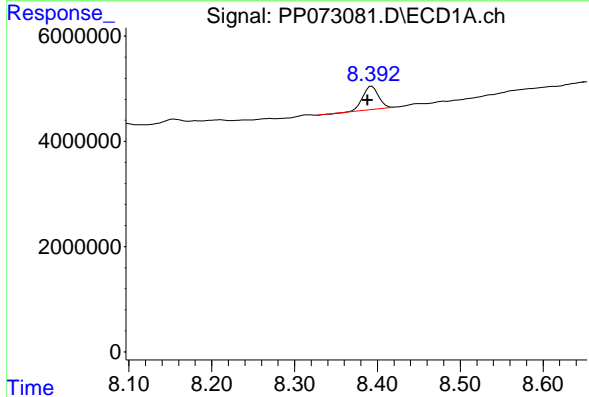
Manual Integrations
 APPROVED

Reviewed By :Yogesh Patel 06/20/2025
 Supervised By :mohammad ahmed 06/23/2025



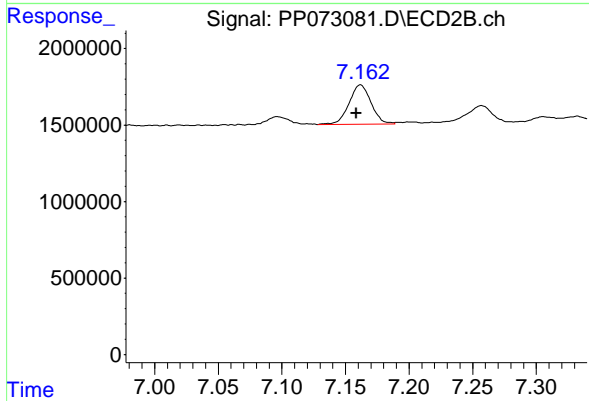
#36 AR-1262-1

R.T.: 6.904 min
 Delta R.T.: 0.003 min
 Response: 3662902
 Conc: 25.35 ng/ml



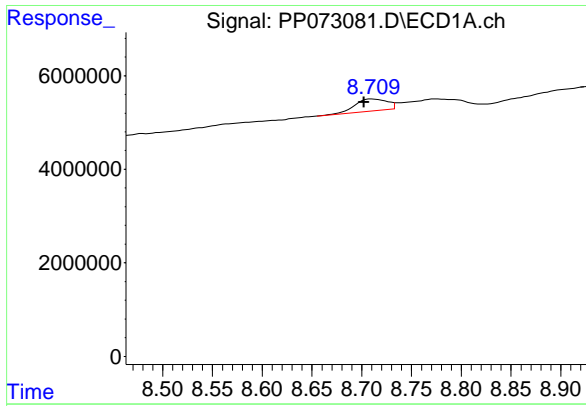
#37 AR-1262-2

R.T.: 8.393 min
 Delta R.T.: 0.005 min
 Response: 5688923
 Conc: 17.98 ng/ml



#37 AR-1262-2

R.T.: 7.162 min
 Delta R.T.: 0.003 min
 Response: 3105960
 Conc: 25.41 ng/ml



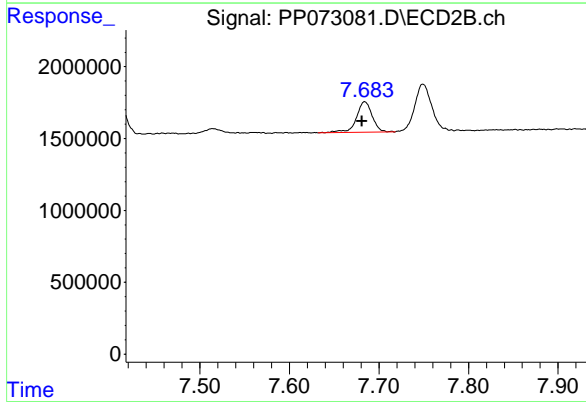
#38 AR-1262-3

R.T.: 8.709 min
 Delta R.T.: 0.007 min
 Response: 5714924
 Conc: 26.71 ng/ml

Instrument : ECD_P
 ClientSampleId : MDL-SOIL-03-QT2-2025

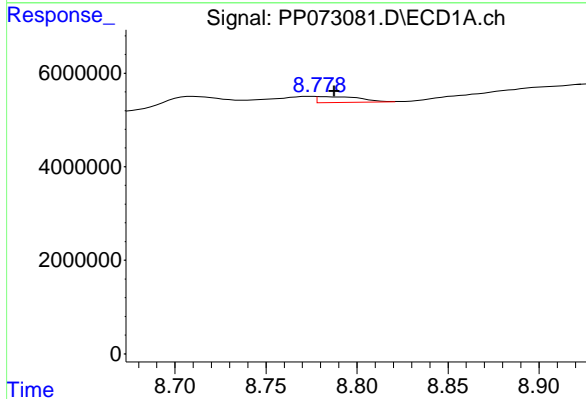
Manual Integrations
 APPROVED

Reviewed By :Yogesh Patel 06/20/2025
 Supervised By :mohammad ahmed 06/23/2025



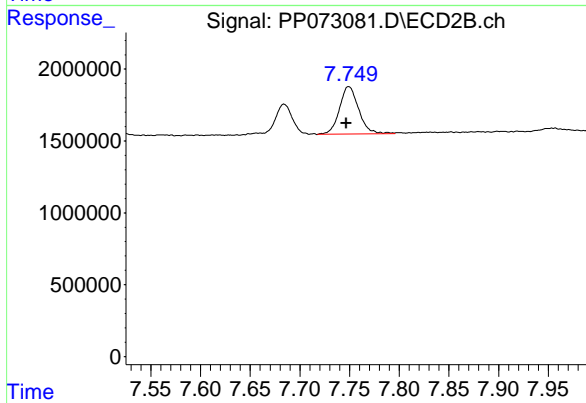
#38 AR-1262-3

R.T.: 7.684 min
 Delta R.T.: 0.003 min
 Response: 2637202
 Conc: 23.40 ng/ml



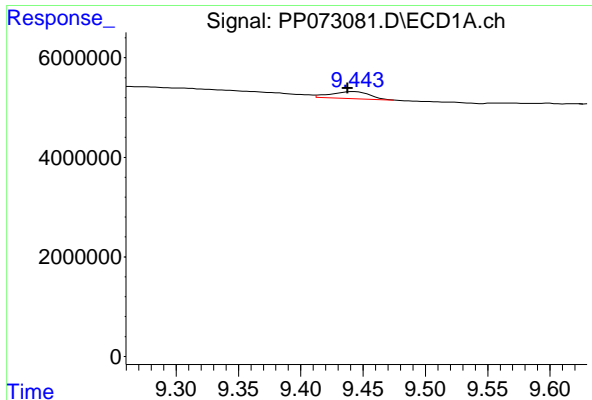
#39 AR-1262-4

R.T.: 8.778 min
 Delta R.T.: -0.010 min
 Response: 1958442
 Conc: 12.43 ng/ml m



#39 AR-1262-4

R.T.: 7.749 min
 Delta R.T.: 0.003 min
 Response: 4436149
 Conc: 24.19 ng/ml



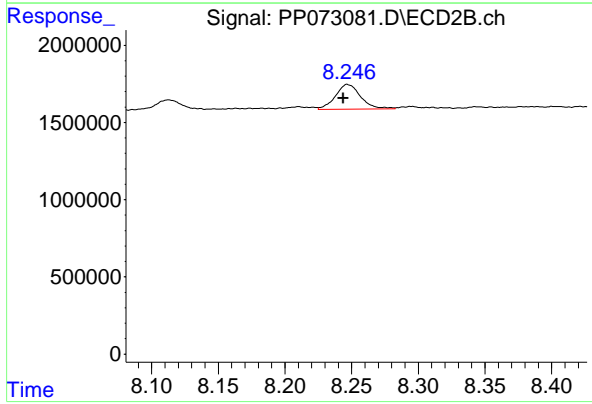
#40 AR-1262-5

R.T.: 9.443 min
 Delta R.T.: 0.005 min
 Response: 3000853
 Conc: 26.83 ng/ml

Instrument : ECD_P
 ClientSampleId : MDL-SOIL-03-QT2-2025

Manual Integrations
 APPROVED

Reviewed By :Yogesh Patel 06/20/2025
 Supervised By :mohammad ahmed 06/23/2025



#40 AR-1262-5

R.T.: 8.247 min
 Delta R.T.: 0.003 min
 Response: 2137501
 Conc: 24.69 ng/ml