

Data Path : Z:\pestpcbsrv\HPCHEM1\ECD_P\Data\PP061925\
 Data File : PP073086.D
 Signal(s) : Signal #1: ECD1A.ch Signal #2: ECD2B.ch
 Acq On : 19 Jun 2025 16:49
 Operator : YP\AJ
 Sample : Q2126-09
 Misc : (Sig #1); AR1660 MDL 25 PPB (Sig #2)
 ALS Vial : 17 Sample Multiplier: 1

Instrument :
 ECD_P
ClientSampleId :
 MDL-WATER-03-QT2-2025

Integration File signal 1: autoint1.e
 Integration File signal 2: autoint2.e
 Quant Time: Jun 19 23:26:51 2025
 Quant Method : Z:\pestpcbsrv\HPCHEM1\ECD_P\methods\PP061725.M
 Quant Title : GC EXTRACTABLES
 QLast Update : Wed Jun 18 08:17:15 2025
 Response via : Initial Calibration
 Integrator: ChemStation

Volume Inj. : 2 µl
 Signal #1 Phase : ZB-MR2 Signal #2 Phase: ZB-MR2
 Signal #1 Info : 30Mx0.32mmx 0.50µ Signal #2 Info : 30M x 0.32mm x 0.25µm

Compound	RT#1	RT#2	Resp#1	Resp#2	ng/ml	ng/ml

System Monitoring Compounds						
1) SA Tetrachlo...	4.496	3.789	43388894	37930796	20.556	21.052
2) SA Decachlor...	10.192	8.800	41559633	30353672	24.320	22.742
Target Compounds						
3) L1 AR-1016-1	5.647	4.870	1575184	2079986	21.675m	30.269 #
4) L1 AR-1016-2	5.669	4.887	2021983	2825150	19.438m	28.072 #
5) L1 AR-1016-3	5.732	5.064	2092668	1796673	32.023	32.836
6) L1 AR-1016-4	5.829	5.105	1505113	1509569	28.789	33.885
7) L1 AR-1016-5	6.121	5.320	1397171	1488347	27.941	26.923
31) L7 AR-1260-1	7.238	6.350	2469224	2602938	27.992m	27.477
32) L7 AR-1260-2	7.492	6.539	4003094	3292169	29.460m	28.274
33) L7 AR-1260-3	7.848	6.691	2940039	2725601	25.755m	26.167
34) L7 AR-1260-4	8.074	7.161	2081875	2504741	20.203m	28.548 #
35) L7 AR-1260-5	8.392	7.402	6219881	5801505	25.849	27.186

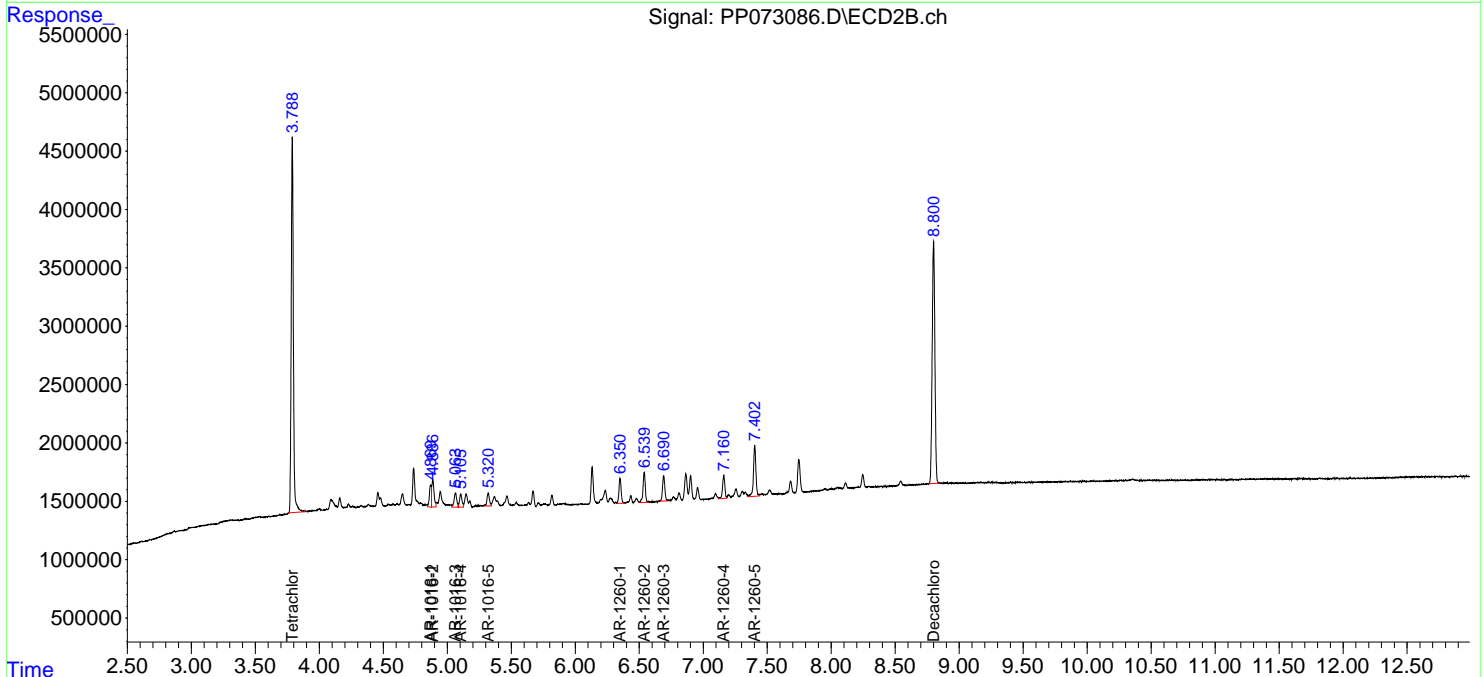
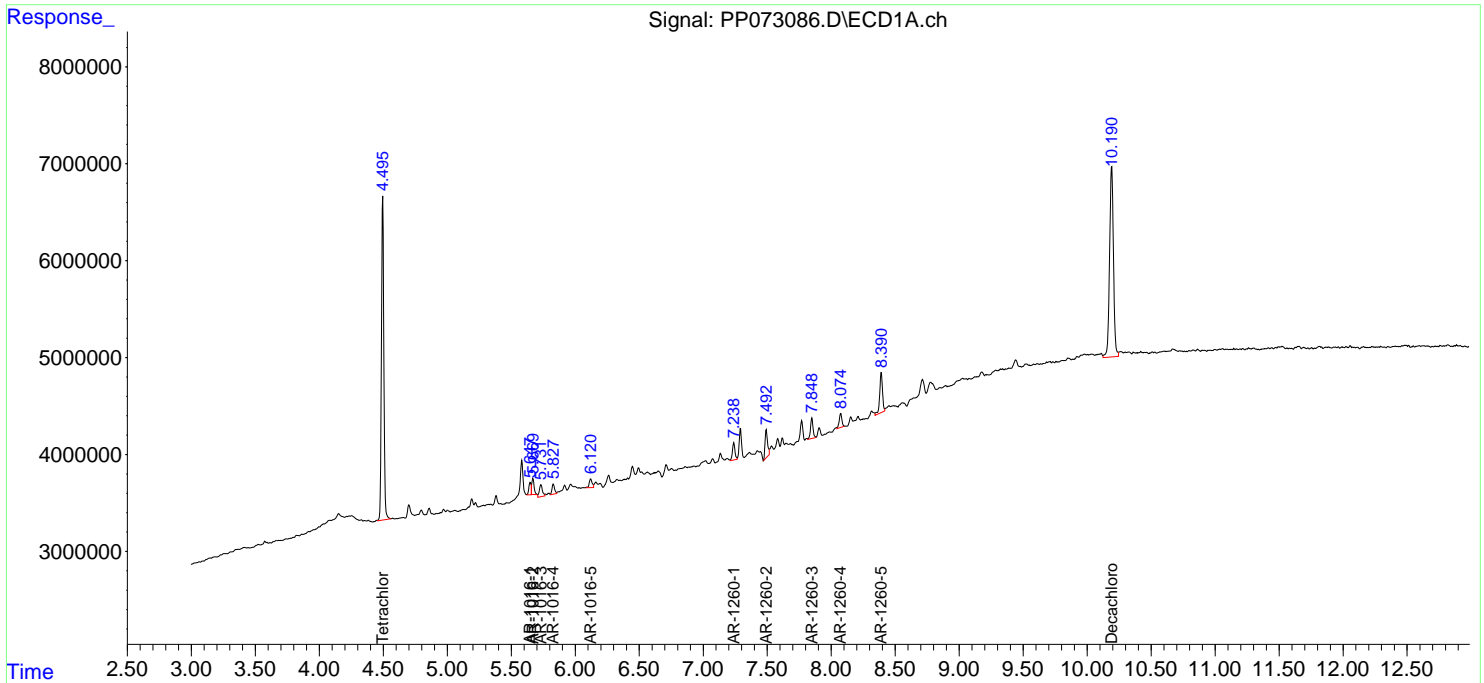
(f)=RT Delta > 1/2 Window (#)=Amounts differ by > 25% (m)=manual int.

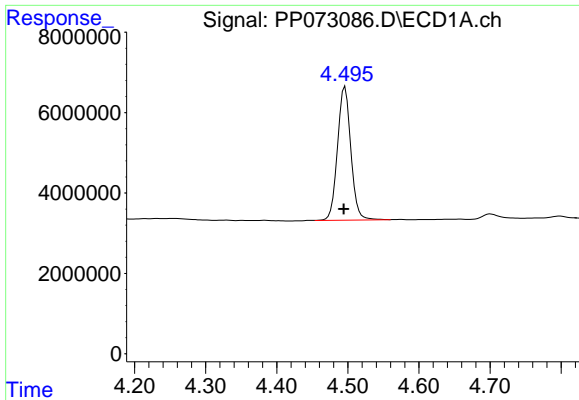
Data Path : Z:\pestpcbsrv\HPCHEM1\ECD_P\Data\PP061925\
 Data File : PP073086.D
 Signal(s) : Signal #1: ECD1A.ch Signal #2: ECD2B.ch
 Acq On : 19 Jun 2025 16:49
 Operator : YP\AJ
 Sample : Q2126-09
 Misc : (Sig #1); AR1660 MDL 25 PPB (Sig #2)
 ALS Vial : 17 Sample Multiplier: 1

Instrument :
 ECD_P
 ClientSampleId :
 MDL-WATER-03-QT2-2025

Integration File signal 1: autoint1.e
 Integration File signal 2: autoint2.e
 Quant Time: Jun 19 23:26:51 2025
 Quant Method : Z:\pestpcbsrv\HPCHEM1\ECD_P\methods\PP061725.M
 Quant Title : GC EXTRACTABLES
 QLast Update : Wed Jun 18 08:17:15 2025
 Response via : Initial Calibration
 Integrator: ChemStation

Volume Inj. : 2 µl
 Signal #1 Phase : ZB-MR1 Signal #2 Phase: ZB-MR2
 Signal #1 Info : 30Mx0.32mmx 0.50µ Signal #2 Info : 30M x 0.32mm x 0.25µm

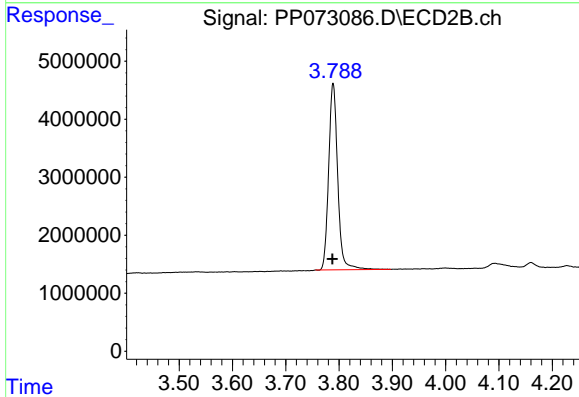




#1 Tetrachloro-m-xylene

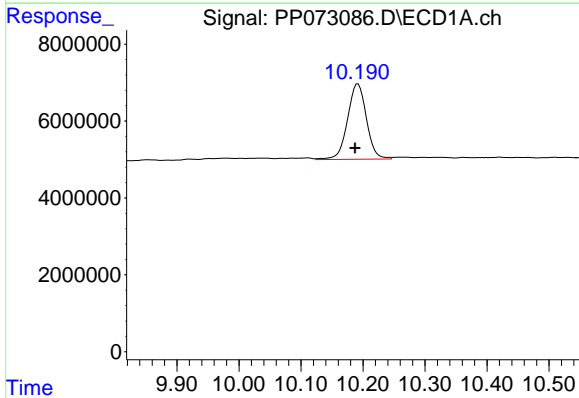
R.T.: 4.496 min
 Delta R.T.: 0.002 min
 Response: 43388894
 Conc: 20.56 ng/ml

Instrument :
 ECD_P
 ClientSampleId :
 MDL-WATER-03-QT2-2025



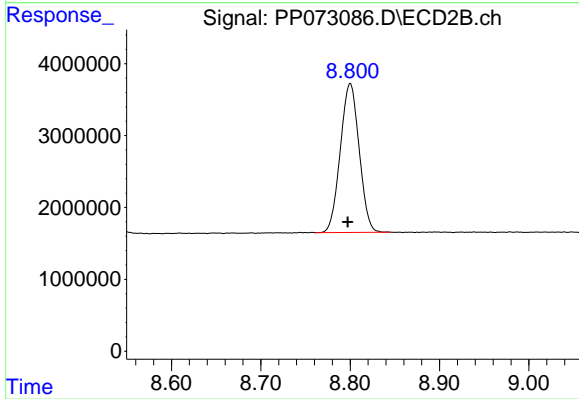
#1 Tetrachloro-m-xylene

R.T.: 3.789 min
 Delta R.T.: 0.001 min
 Response: 37930796
 Conc: 21.05 ng/ml



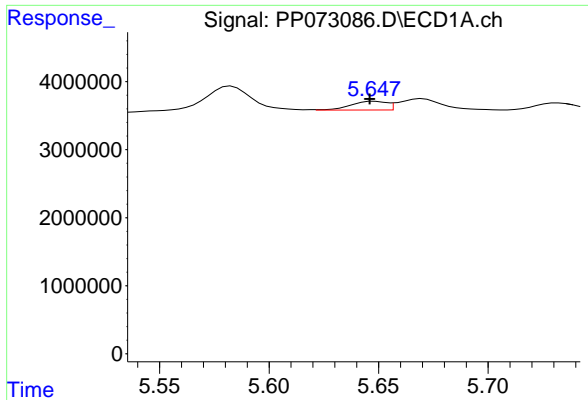
#2 Decachlorobiphenyl

R.T.: 10.192 min
 Delta R.T.: 0.005 min
 Response: 41559633
 Conc: 24.32 ng/ml



#2 Decachlorobiphenyl

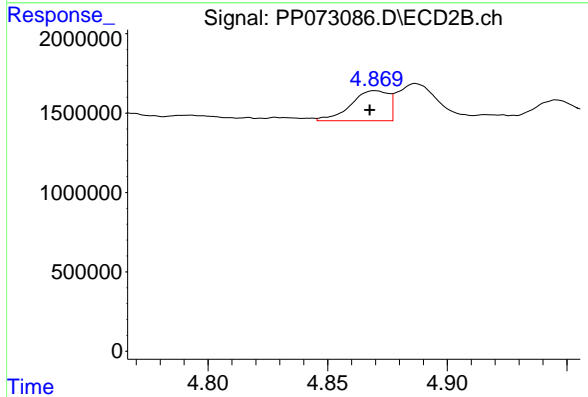
R.T.: 8.800 min
 Delta R.T.: 0.003 min
 Response: 30353672
 Conc: 22.74 ng/ml



#3 AR-1016-1

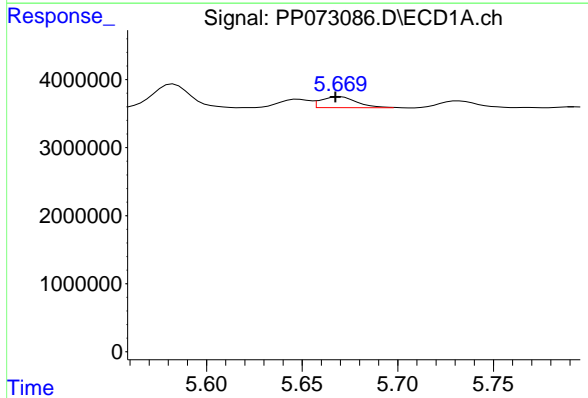
R.T.: 5.647 min
 Delta R.T.: 0.000 min
 Response: 1575184
 Conc: 21.68 ng/ml

Instrument : ECD_P
 ClientSampleId : MDL-WATER-03-QT2-2025



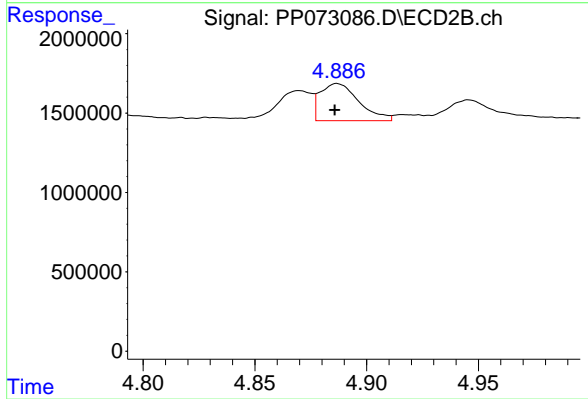
#3 AR-1016-1

R.T.: 4.870 min
 Delta R.T.: 0.002 min
 Response: 2079986
 Conc: 30.27 ng/ml



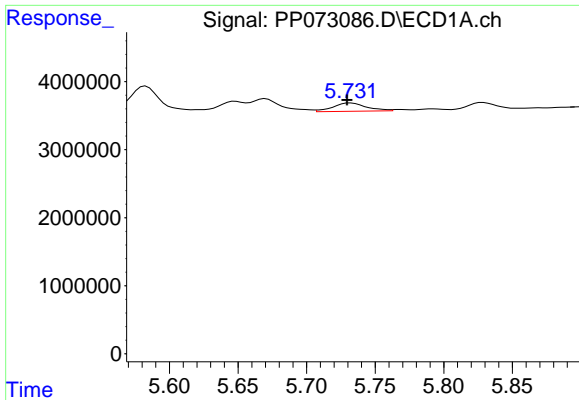
#4 AR-1016-2

R.T.: 5.669 min
 Delta R.T.: 0.001 min
 Response: 2021983
 Conc: 19.44 ng/ml m



#4 AR-1016-2

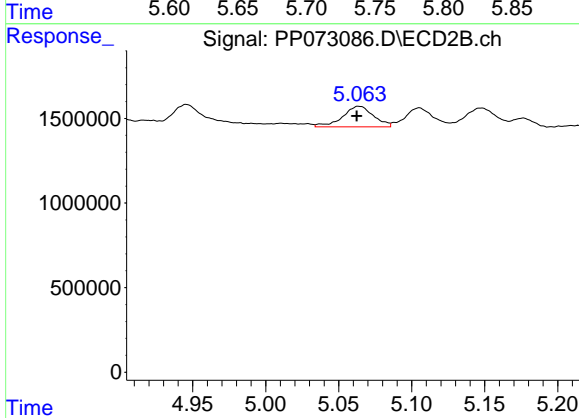
R.T.: 4.887 min
 Delta R.T.: 0.001 min
 Response: 2825150
 Conc: 28.07 ng/ml



#5 AR-1016-3

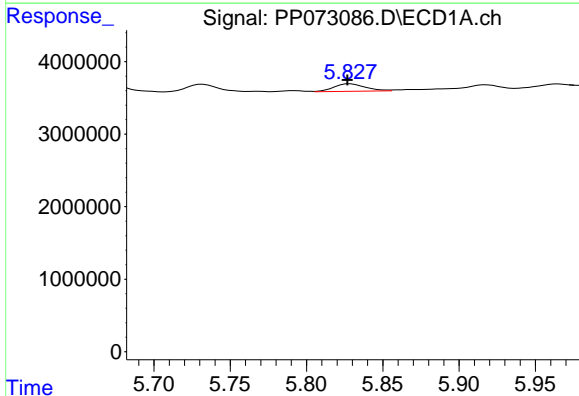
R.T.: 5.732 min
 Delta R.T.: 0.003 min
 Response: 2092668
 Conc: 32.02 ng/ml

Instrument :
 ECD_P
 ClientSampleId :
 MDL-WATER-03-QT2-2025



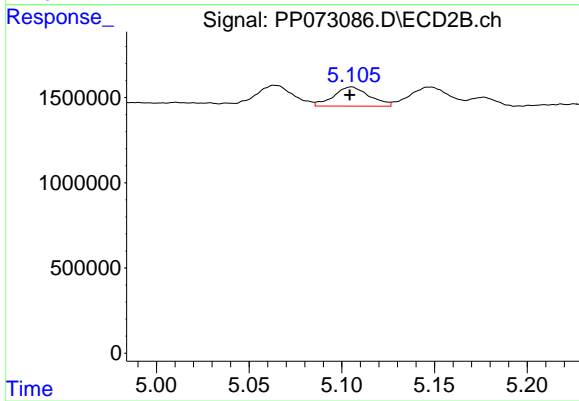
#5 AR-1016-3

R.T.: 5.064 min
 Delta R.T.: 0.002 min
 Response: 1796673
 Conc: 32.84 ng/ml



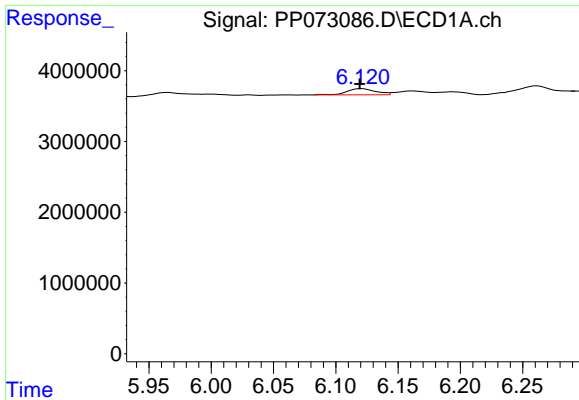
#6 AR-1016-4

R.T.: 5.829 min
 Delta R.T.: 0.002 min
 Response: 1505113
 Conc: 28.79 ng/ml



#6 AR-1016-4

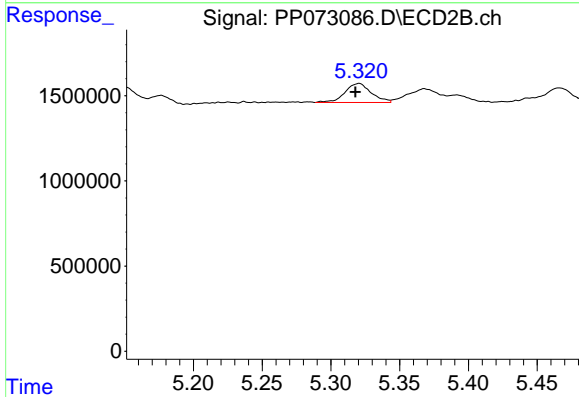
R.T.: 5.105 min
 Delta R.T.: 0.000 min
 Response: 1509569
 Conc: 33.89 ng/ml



#7 AR-1016-5

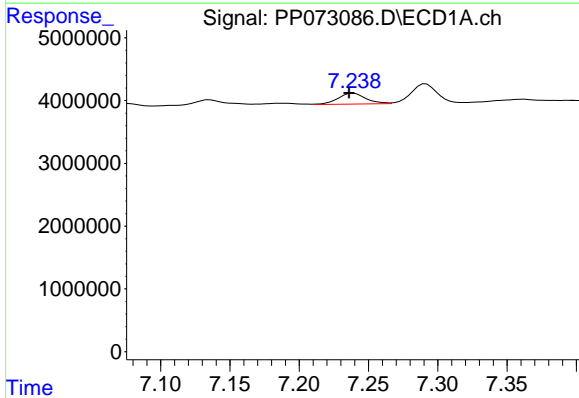
R.T.: 6.121 min
 Delta R.T.: 0.002 min
 Response: 1397171
 Conc: 27.94 ng/ml

Instrument :
 ECD_P
ClientSampleId :
 MDL-WATER-03-QT2-2025



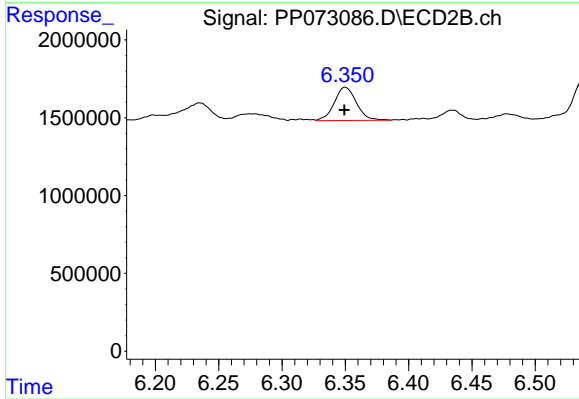
#7 AR-1016-5

R.T.: 5.320 min
 Delta R.T.: 0.003 min
 Response: 1488347
 Conc: 26.92 ng/ml



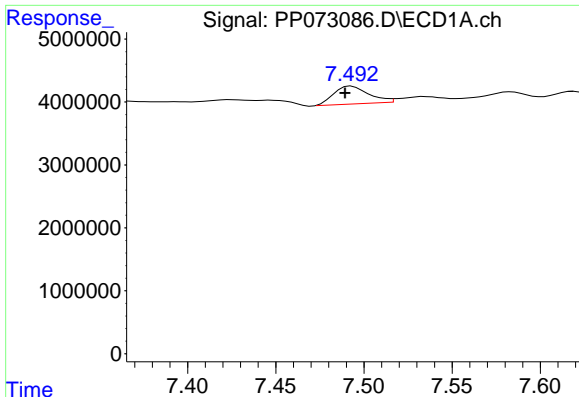
#31 AR-1260-1

R.T.: 7.238 min
 Delta R.T.: 0.002 min
 Response: 2469224
 Conc: 27.99 ng/ml m



#31 AR-1260-1

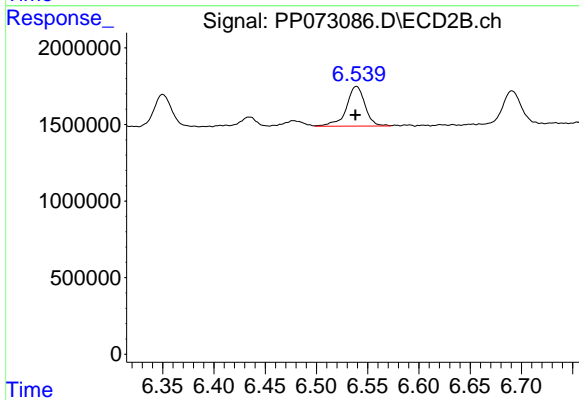
R.T.: 6.350 min
 Delta R.T.: 0.000 min
 Response: 2602938
 Conc: 27.48 ng/ml



#32 AR-1260-2

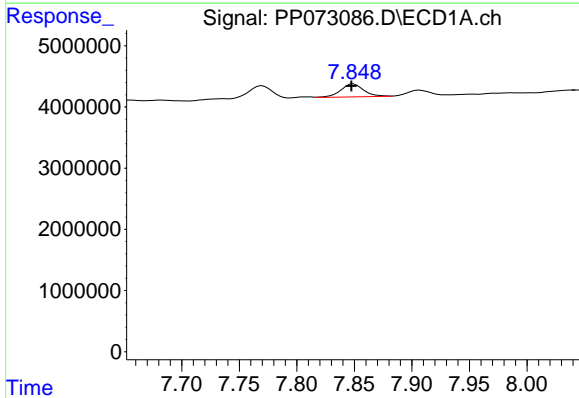
R.T.: 7.492 min
 Delta R.T.: 0.002 min
 Response: 4003094
 Conc: 29.46 ng/ml

Instrument :
 ECD_P
 ClientSampleId :
 MDL-WATER-03-QT2-2025



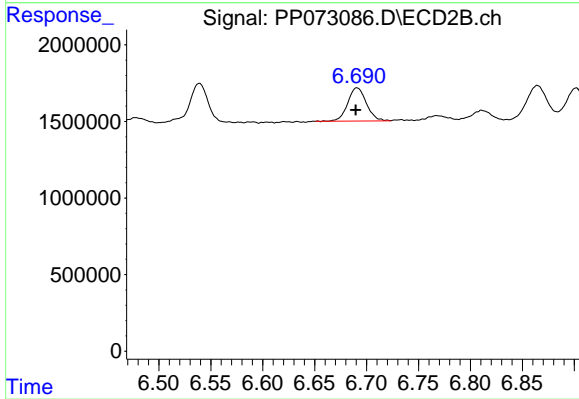
#32 AR-1260-2

R.T.: 6.539 min
 Delta R.T.: 0.000 min
 Response: 3292169
 Conc: 28.27 ng/ml



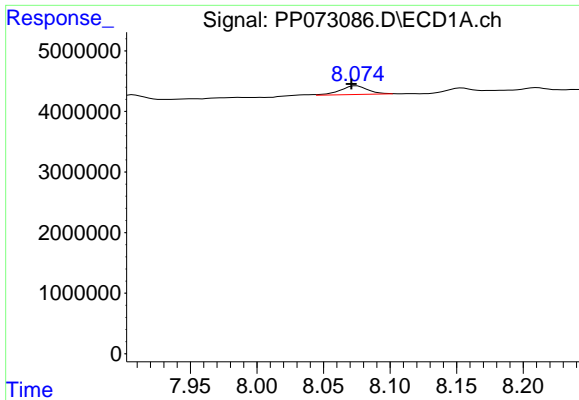
#33 AR-1260-3

R.T.: 7.848 min
 Delta R.T.: 0.000 min
 Response: 2940039
 Conc: 25.76 ng/ml m



#33 AR-1260-3

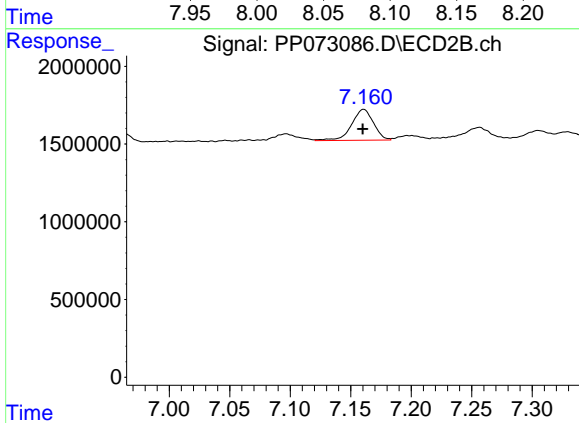
R.T.: 6.691 min
 Delta R.T.: 0.001 min
 Response: 2725601
 Conc: 26.17 ng/ml



#34 AR-1260-4

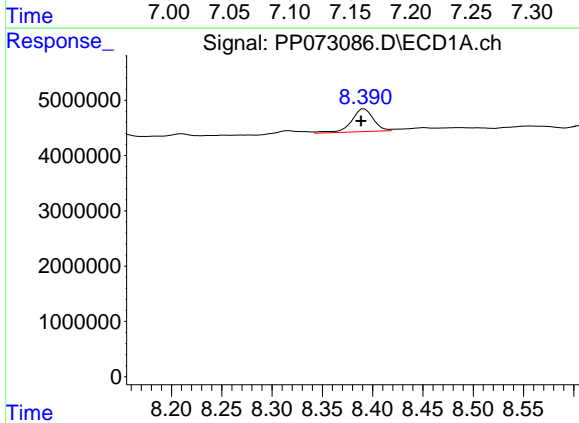
R.T.: 8.074 min
 Delta R.T.: 0.003 min
 Response: 2081875
 Conc: 20.20 ng/ml

Instrument :
 ECD_P
ClientSampleId :
 MDL-WATER-03-QT2-2025



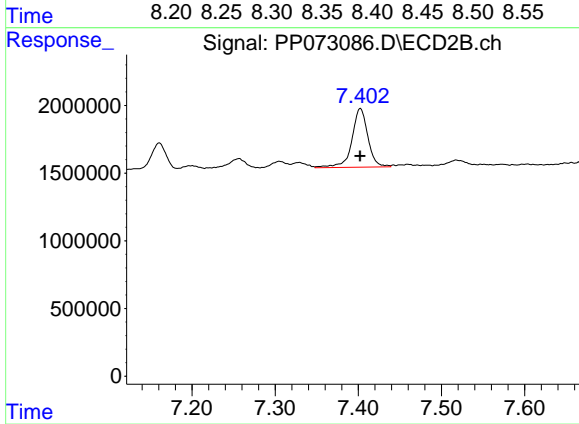
#34 AR-1260-4

R.T.: 7.161 min
 Delta R.T.: 0.000 min
 Response: 2504741
 Conc: 28.55 ng/ml



#35 AR-1260-5

R.T.: 8.392 min
 Delta R.T.: 0.003 min
 Response: 6219881
 Conc: 25.85 ng/ml



#35 AR-1260-5

R.T.: 7.402 min
 Delta R.T.: 0.000 min
 Response: 5801505
 Conc: 27.19 ng/ml