

Data Path : Z:\pestpcbsrv\HPCHEM1\ECD_P\Data\PP062021\
 Data File : PP036625.D
 Signal(s) : Signal #1: ECD1A.CH Signal #2: ECD2B.CH
 Acq On : 20 Jun 2021 9:35
 Operator : DD\AJ
 Sample : M2756-01
 Misc :
 ALS Vial : 7 Sample Multiplier: 1

Instrument :
 ECD_P
 ClientSampleId :
 230215-N-1-1

Integration File signal 1: autoint1.e
 Integration File signal 2: autoint2.e
 Quant Time: Jun 21 03:52:09 2021
 Quant Method : Z:\pestpcbsrv\HPCHEM1\ECD_P\methods\PP061721.M
 Quant Title : GC EXTRACTABLES
 QLast Update : Fri Jun 18 06:06:19 2021
 Response via : Initial Calibration
 Integrator: ChemStation 6890 Scale Mode: Small noise peaks clipped

Volume Inj. : 2 µl
 Signal #1 Phase : ZB-MR1 Signal #2 Phase: ZB-MR2
 Signal #1 Info : 30Mx0.32mmx 0.50µ Signal #2 Info : 30M x 0.32mm x 0.25µm

Compound	RT#1	RT#2	Resp#1	Resp#2	ng/ml	ng/ml

System Monitoring Compounds						
1) SA Tetrachlo...	4.965	3.958	674885	452149	15.269	14.598
2) SA Decachlor...	11.007	9.271	675334	398456	15.743	12.459

Target Compounds

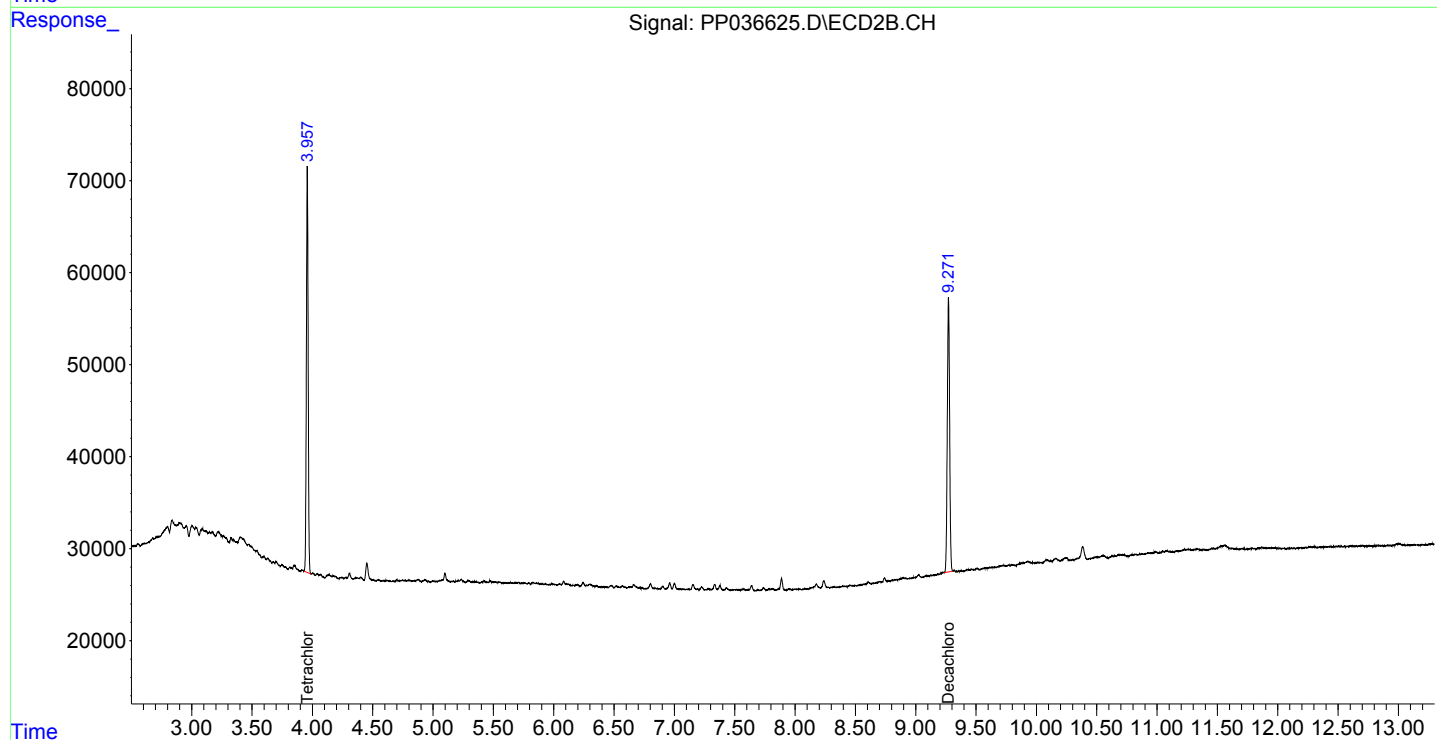
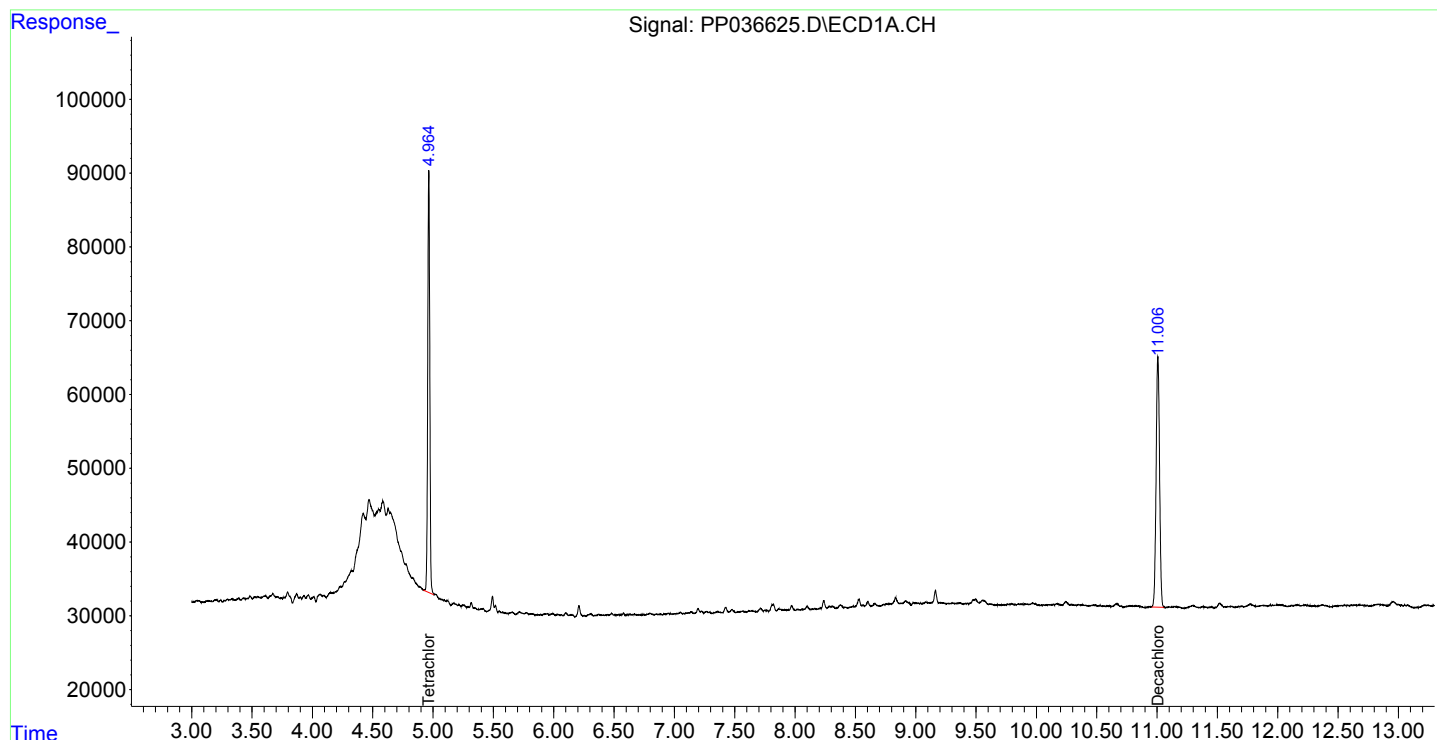
(f)=RT Delta > 1/2 Window (#)=Amounts differ by > 25% (m)=manual int.

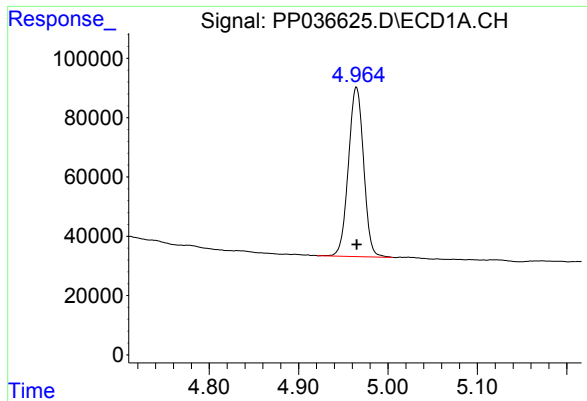
Data Path : Z:\pestpcbsrv\HPCHEM1\ECD_P\Data\PP062021\
 Data File : PP036625.D
 Signal(s) : Signal #1: ECD1A.CH Signal #2: ECD2B.CH
 Acq On : 20 Jun 2021 9:35
 Operator : DD\AJ
 Sample : M2756-01
 Misc :
 ALS Vial : 7 Sample Multiplier: 1

Instrument :
 ECD_P
 Client Sampled :
 230215-N-1-1

Integration File signal 1: autoint1.e
 Integration File signal 2: autoint2.e
 Quant Time: Jun 21 03:52:09 2021
 Quant Method : Z:\pestpcbsrv\HPCHEM1\ECD_P\methods\PP061721.M
 Quant Title : GC EXTRACTABLES
 QLast Update : Fri Jun 18 06:06:19 2021
 Response via : Initial Calibration
 Integrator: ChemStation 6890 Scale Mode: Small noise peaks clipped

Volume Inj. : 2 µl
 Signal #1 Phase : ZB-MR1 Signal #2 Phase: ZB-MR2
 Signal #1 Info : 30Mx0.32mmx 0.50µ Signal #2 Info : 30M x 0.32mm x 0.25µm

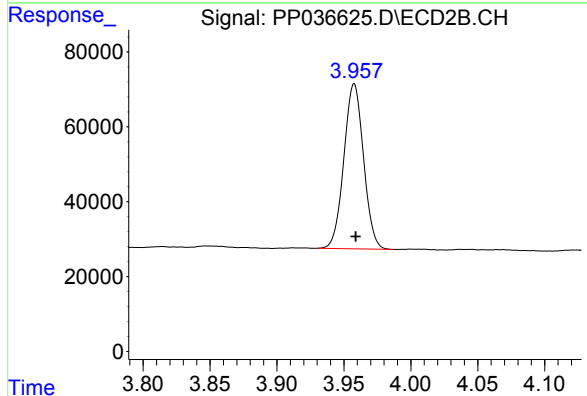




#1 Tetrachloro-m-xylene

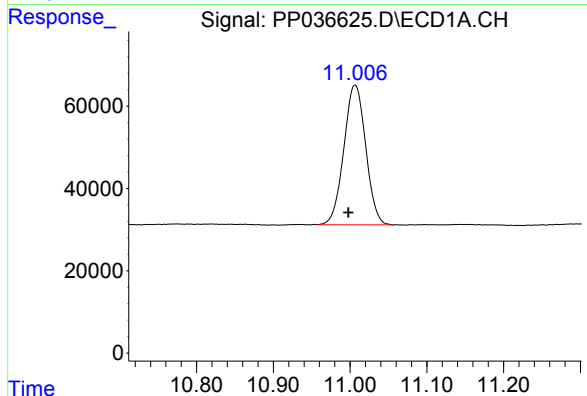
R.T.: 4.965 min
 Delta R.T.: 0.000 min
 Response: 674885
 Conc: 15.27 ng/ml

Instrument :
 ECD_P
 ClientSampleId :
 230215-N-1-1



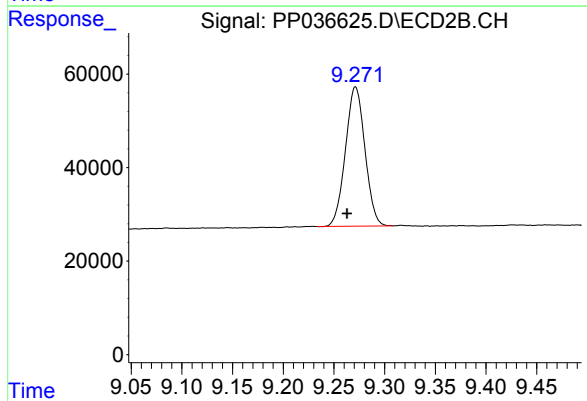
#1 Tetrachloro-m-xylene

R.T.: 3.958 min
 Delta R.T.: -0.001 min
 Response: 452149
 Conc: 14.60 ng/ml



#2 Decachlorobiphenyl

R.T.: 11.007 min
 Delta R.T.: 0.009 min
 Response: 675334
 Conc: 15.74 ng/ml



#2 Decachlorobiphenyl

R.T.: 9.271 min
 Delta R.T.: 0.008 min
 Response: 398456
 Conc: 12.46 ng/ml