

Data Path : Z:\pestpcbsrv\HPCHEM1\ECD_P\Data\PP062022\
 Data File : PP048941.D
 Signal(s) : Signal #1: ECD1A.ch Signal #2: ECD2B.ch
 Acq On : 20 Jun 2022 15:17
 Operator : YP\AJ
 Sample : AR1254CCC500
 Misc :
 ALS Vial : 6 Sample Multiplier: 1

Instrument :
 ECD_P
ClientSampleId :
 AR1254CCC500

Manual Integrations
APPROVED

Reviewed By :Yogesh Patel 06/21/2022
 Supervised By :Ankita Jodhani 06/22/2022

Integration File signal 1: autoint1.e
 Integration File signal 2: autoint2.e
 Quant Time: Jun 20 16:30:54 2022
 Quant Method : Z:\pestpcbsrv\HPCHEM1\ECD_P\methods\PP060722.M
 Quant Title : GC EXTRACTABLES
 QLast Update : Tue Jun 07 11:09:40 2022
 Response via : Initial Calibration
 Integrator: ChemStation

Volume Inj. : 2 µl
 Signal #1 Phase : ZB-MR1 Signal #2 Phase: ZB-MR2
 Signal #1 Info : 30Mx0.32mmx 0.50µ Signal #2 Info : 30M x 0.32mm x 0.25µm

Compound	RT#1	RT#2	Resp#1	Resp#2	ng/ml	ng/ml

System Monitoring Compounds						
1) SA Tetrachlo...	4.033	3.198	112.2E6	111.0E6	46.807m	58.330
2) SA Decachlor...	10.379	8.602	95802107	67844716	50.263	55.403
Target Compounds						
26) L6 AR-1254-1	6.261	5.212	40979000	51589966	440.637	510.339
27) L6 AR-1254-2	6.504	5.373	62141096	45116945	447.991	512.389
28) L6 AR-1254-3	6.911	5.807	64595303	69221434	454.314	497.966
29) L6 AR-1254-4	7.230	6.057	47641911	42605519	447.073	491.320
30) L6 AR-1254-5	7.696	6.510	54100022	60506744	455.726	493.347

(f)=RT Delta > 1/2 Window (#)=Amounts differ by > 25% (m)=manual int.

Data Path : Z:\pestpcbsrv\HPCHEM1\ECD_P\Data\PP062022\
 Data File : PP048941.D
 Signal(s) : Signal #1: ECD1A.ch Signal #2: ECD2B.ch
 Acq On : 20 Jun 2022 15:17
 Operator : YP\AJ
 Sample : AR1254CCC500
 Misc :
 ALS Vial : 6 Sample Multiplier: 1

Instrument :

ECD_P
 ClientSampleId :
 AR1254CCC500

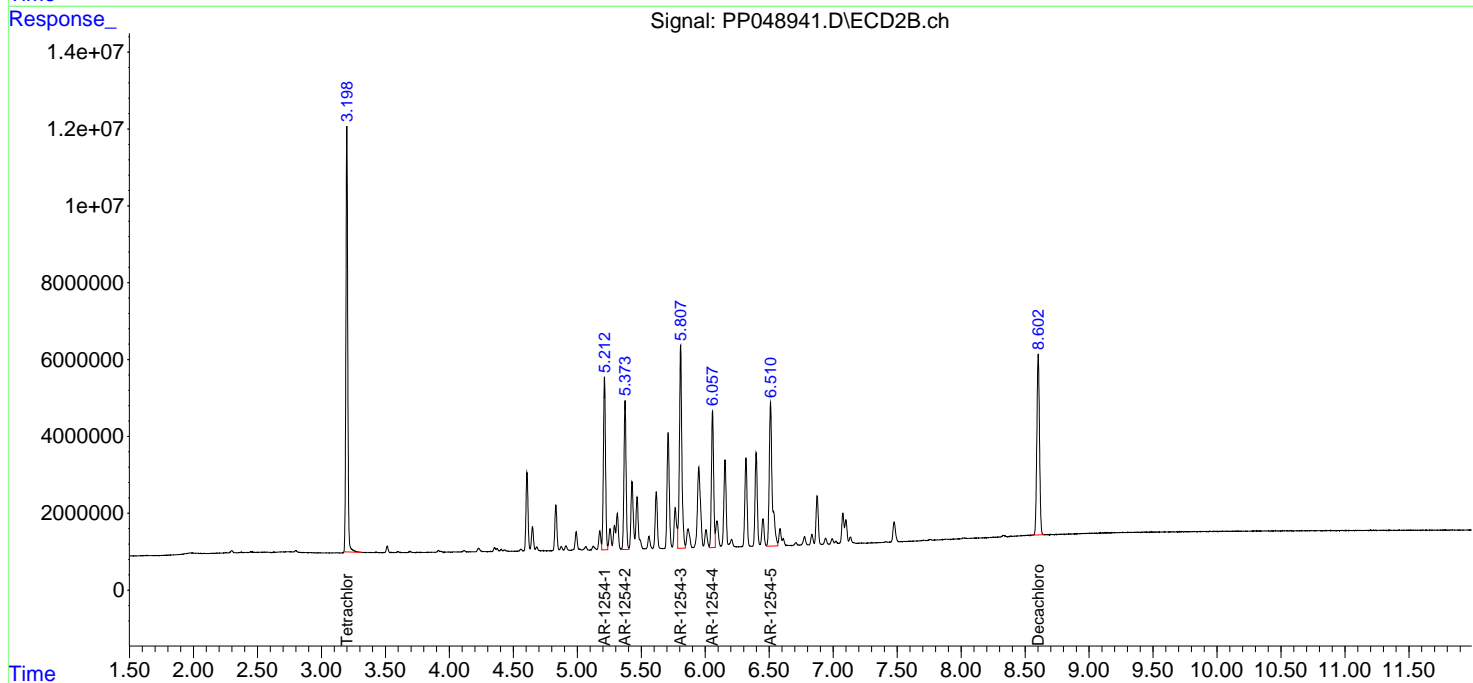
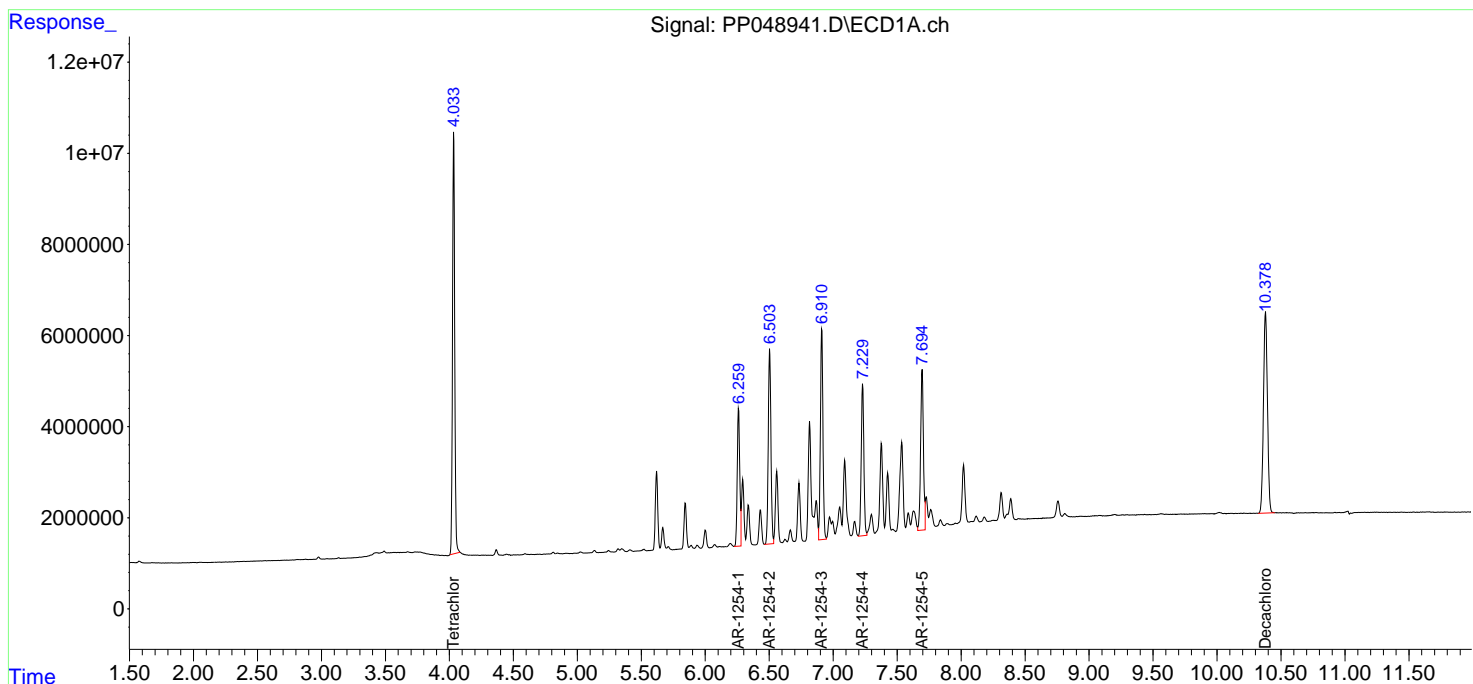
Manual Integrations

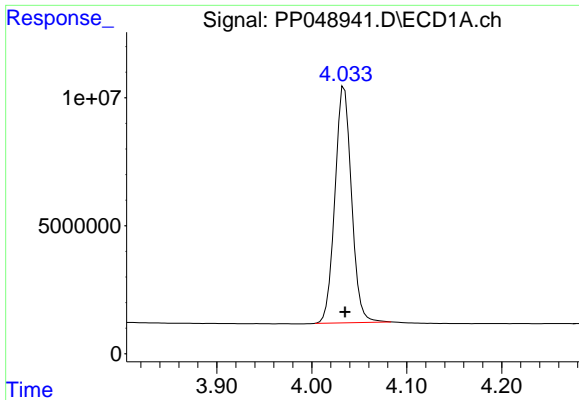
APPROVED

Reviewed By :Yogesh Patel 06/21/2022
 Supervised By :Ankita Jodhani 06/22/2022

Integration File signal 1: autoint1.e
 Integration File signal 2: autoint2.e
 Quant Time: Jun 20 16:30:54 2022
 Quant Method : Z:\pestpcbsrv\HPCHEM1\ECD_P\methods\PP060722.M
 Quant Title : GC EXTRACTABLES
 QLast Update : Tue Jun 07 11:09:40 2022
 Response via : Initial Calibration
 Integrator: ChemStation

Volume Inj. : 2 µl
 Signal #1 Phase : ZB-MR1 Signal #2 Phase: ZB-MR2
 Signal #1 Info : 30Mx0.32mmx 0.50µ Signal #2 Info : 30M x 0.32mm x 0.25µm



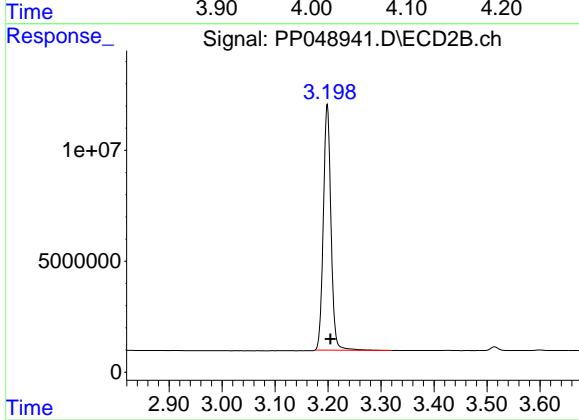


#1 Tetrachloro-m-xylene
 R.T.: 4.033 min
 Delta R.T.: -0.002 min
 Response: 112158937
 Conc: 46.81 ng/ml

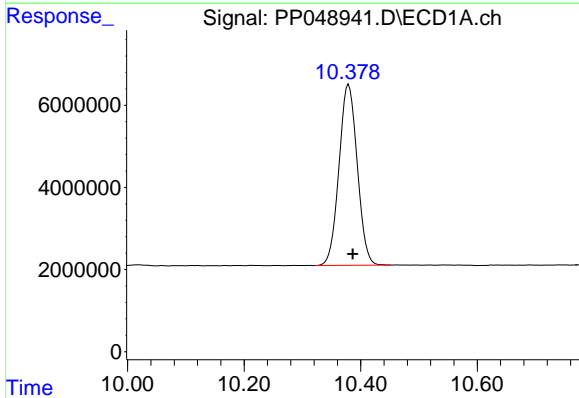
Instrument :
 ECD_P
 ClientSampleId :
 AR1254CCC500

Manual Integrations
 APPROVED

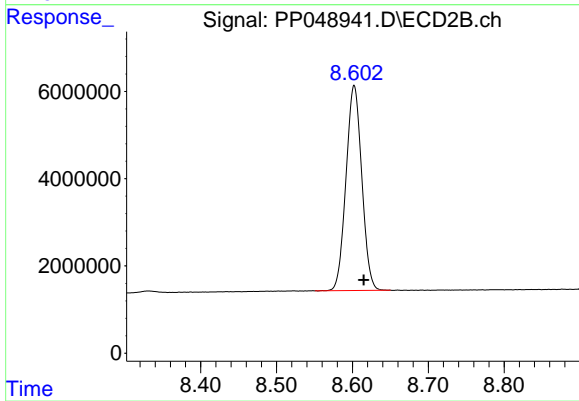
Reviewed By :Yogesh Patel 06/21/2022
 Supervised By :Ankita Jodhani 06/22/2022



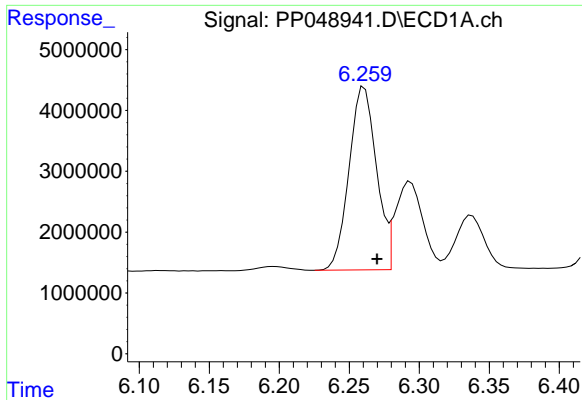
#1 Tetrachloro-m-xylene
 R.T.: 3.198 min
 Delta R.T.: -0.006 min
 Response: 111022496
 Conc: 58.33 ng/ml



#2 Decachlorobiphenyl
 R.T.: 10.379 min
 Delta R.T.: -0.007 min
 Response: 95802107
 Conc: 50.26 ng/ml



#2 Decachlorobiphenyl
 R.T.: 8.602 min
 Delta R.T.: -0.013 min
 Response: 67844716
 Conc: 55.40 ng/ml



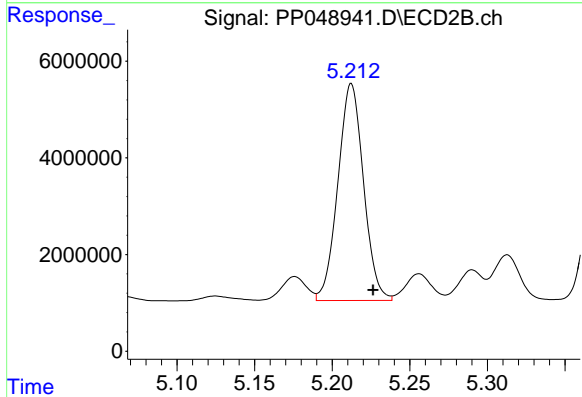
#26 AR-1254-1

R.T.: 6.261 min
 Delta R.T.: -0.009 min
 Response: 40979000
 Conc: 440.64 ng/ml

Instrument :
 ECD_P
 ClientSampleId :
 AR1254CCC500

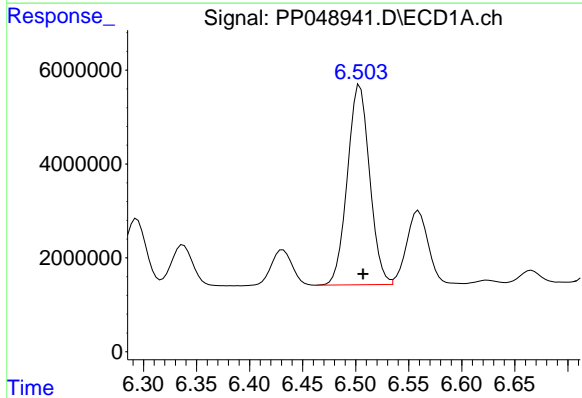
Manual Integrations
 APPROVED

Reviewed By :Yogesh Patel 06/21/2022
 Supervised By :Ankita Jodhani 06/22/2022



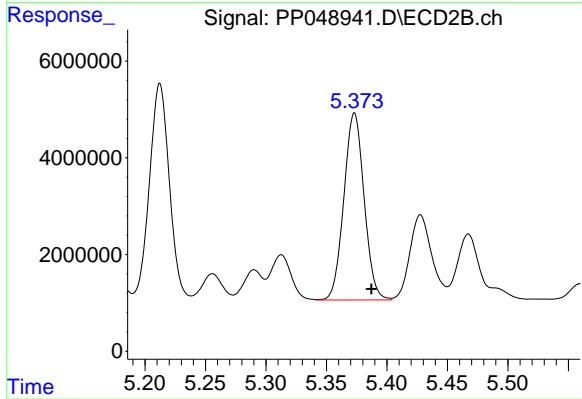
#26 AR-1254-1

R.T.: 5.212 min
 Delta R.T.: -0.014 min
 Response: 51589966
 Conc: 510.34 ng/ml



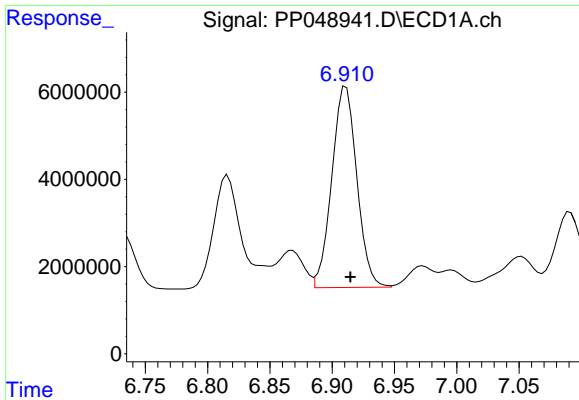
#27 AR-1254-2

R.T.: 6.504 min
 Delta R.T.: -0.003 min
 Response: 62141096
 Conc: 447.99 ng/ml



#27 AR-1254-2

R.T.: 5.373 min
 Delta R.T.: -0.014 min
 Response: 45116945
 Conc: 512.39 ng/ml



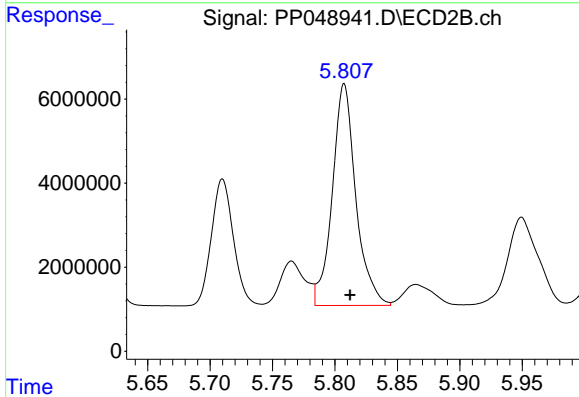
#28 AR-1254-3

R.T.: 6.911 min
 Delta R.T.: -0.004 min
 Response: 64595303
 Conc: 454.31 ng/ml

Instrument :
 ECD_P
 ClientSampleId :
 AR1254CCC500

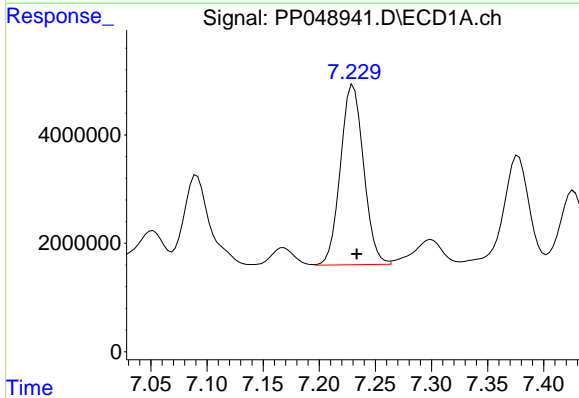
Manual Integrations
 APPROVED

Reviewed By :Yogesh Patel 06/21/2022
 Supervised By :Ankita Jodhani 06/22/2022



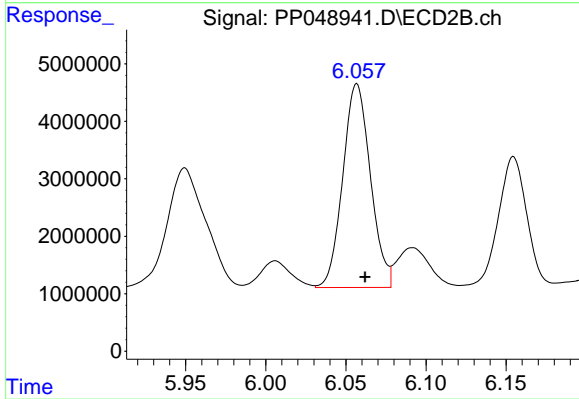
#28 AR-1254-3

R.T.: 5.807 min
 Delta R.T.: -0.005 min
 Response: 69221434
 Conc: 497.97 ng/ml



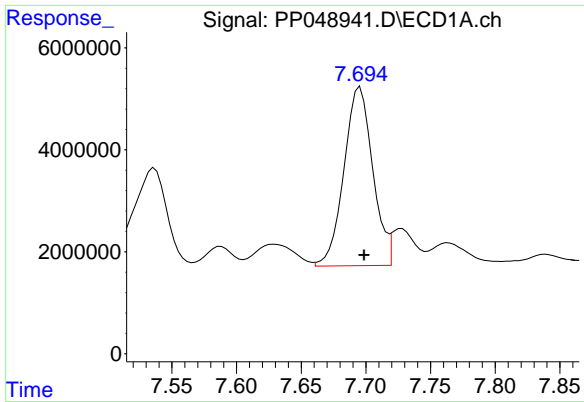
#29 AR-1254-4

R.T.: 7.230 min
 Delta R.T.: -0.003 min
 Response: 47641911
 Conc: 447.07 ng/ml



#29 AR-1254-4

R.T.: 6.057 min
 Delta R.T.: -0.005 min
 Response: 42605519
 Conc: 491.32 ng/ml



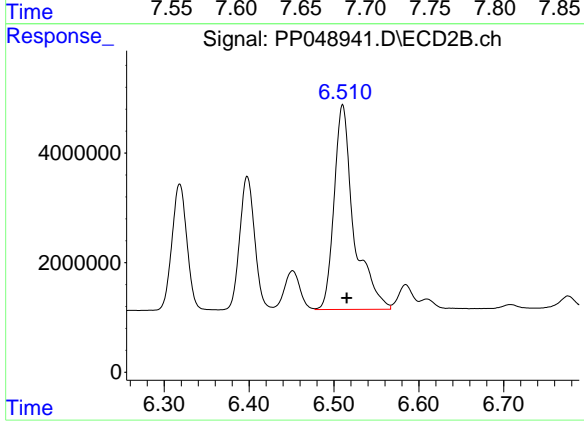
#30 AR-1254-5

R.T.: 7.696 min
Delta R.T.: -0.003 min
Response: 54100022
Conc: 455.73 ng/ml

Instrument :
ECD_P
ClientSampleId :
AR1254CCC500

Manual Integrations
APPROVED

Reviewed By :Yogesh Patel 06/21/2022
Supervised By :Ankita Jodhani 06/22/2022



#30 AR-1254-5

R.T.: 6.510 min
Delta R.T.: -0.005 min
Response: 60506744
Conc: 493.35 ng/ml