

Data Path : Z:\pestpcbsrv\HPCHEM1\ECD\_P\Data\PP062022\  
 Data File : PP048946.D  
 Signal(s) : Signal #1: ECD1A.ch Signal #2: ECD2B.ch  
 Acq On : 20 Jun 2022 16:48  
 Operator : YP\AJ  
 Sample : AR1254CCC500  
 Misc :  
 ALS Vial : 6 Sample Multiplier: 1

**Instrument :**  
 ECD\_P  
**ClientSampleId :**  
 AR1254CCC500

**Manual Integrations**  
**APPROVED**

Reviewed By :Yogesh Patel 06/21/2022  
 Supervised By :Ankita Jodhani 06/22/2022

Integration File signal 1: autoint1.e  
 Integration File signal 2: autoint2.e  
 Quant Time: Jun 20 17:30:52 2022  
 Quant Method : Z:\pestpcbsrv\HPCHEM1\ECD\_P\methods\PP060722.M  
 Quant Title : GC EXTRACTABLES  
 QLast Update : Tue Jun 07 11:09:40 2022  
 Response via : Initial Calibration  
 Integrator: ChemStation

Volume Inj. : 2 µl  
 Signal #1 Phase : ZB-MR1 Signal #2 Phase: ZB-MR2  
 Signal #1 Info : 30Mx0.32mmx 0.50µ Signal #2 Info : 30M x 0.32mm x 0.25µm

Compound	RT#1	RT#2	Resp#1	Resp#2	ng/ml	ng/ml
-----						
System Monitoring Compounds						
1) SA Tetrachlo...	4.032	3.198	108.2E6	109.9E6	45.161m	57.754 #
2) SA Decachlor...	10.378	8.602	93305194	65350899	48.953	53.367
Target Compounds						
26) L6 AR-1254-1	6.260	5.212	38726483	49720170	416.416	491.842
27) L6 AR-1254-2	6.503	5.372f	58699729	43344608	423.181	492.261
28) L6 AR-1254-3	6.911	5.806	61433785	68075845	432.078	489.724
29) L6 AR-1254-4	7.230	6.056	44779360	41549729	420.210	479.144
30) L6 AR-1254-5	7.694	6.510	51143296	59435447	430.820	484.612
-----						

(f)=RT Delta > 1/2 Window (#)=Amounts differ by > 25% (m)=manual int.

Data Path : Z:\pestpcbsrv\HPCHEM1\ECD\_P\Data\PP062022\  
 Data File : PP048946.D  
 Signal(s) : Signal #1: ECD1A.ch Signal #2: ECD2B.ch  
 Acq On : 20 Jun 2022 16:48  
 Operator : YP\AJ  
 Sample : AR1254CCC500  
 Misc :  
 ALS Vial : 6 Sample Multiplier: 1

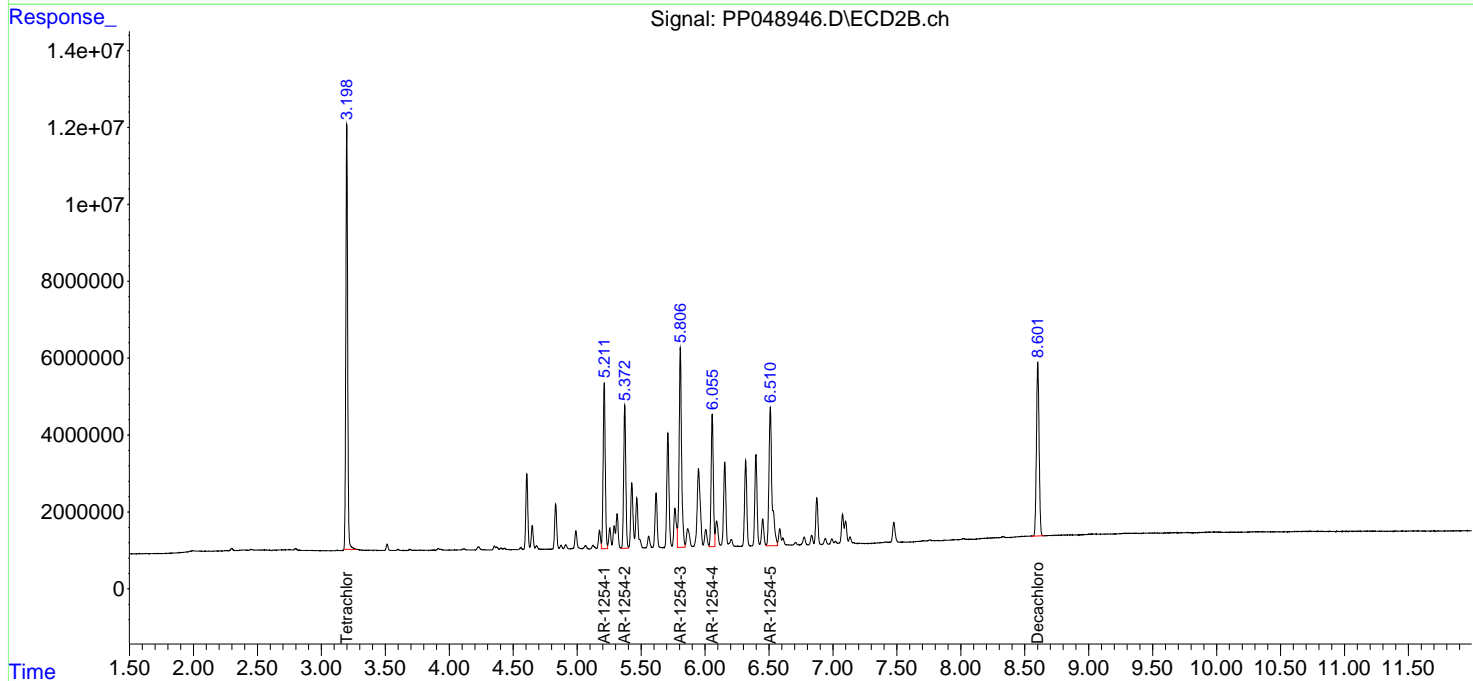
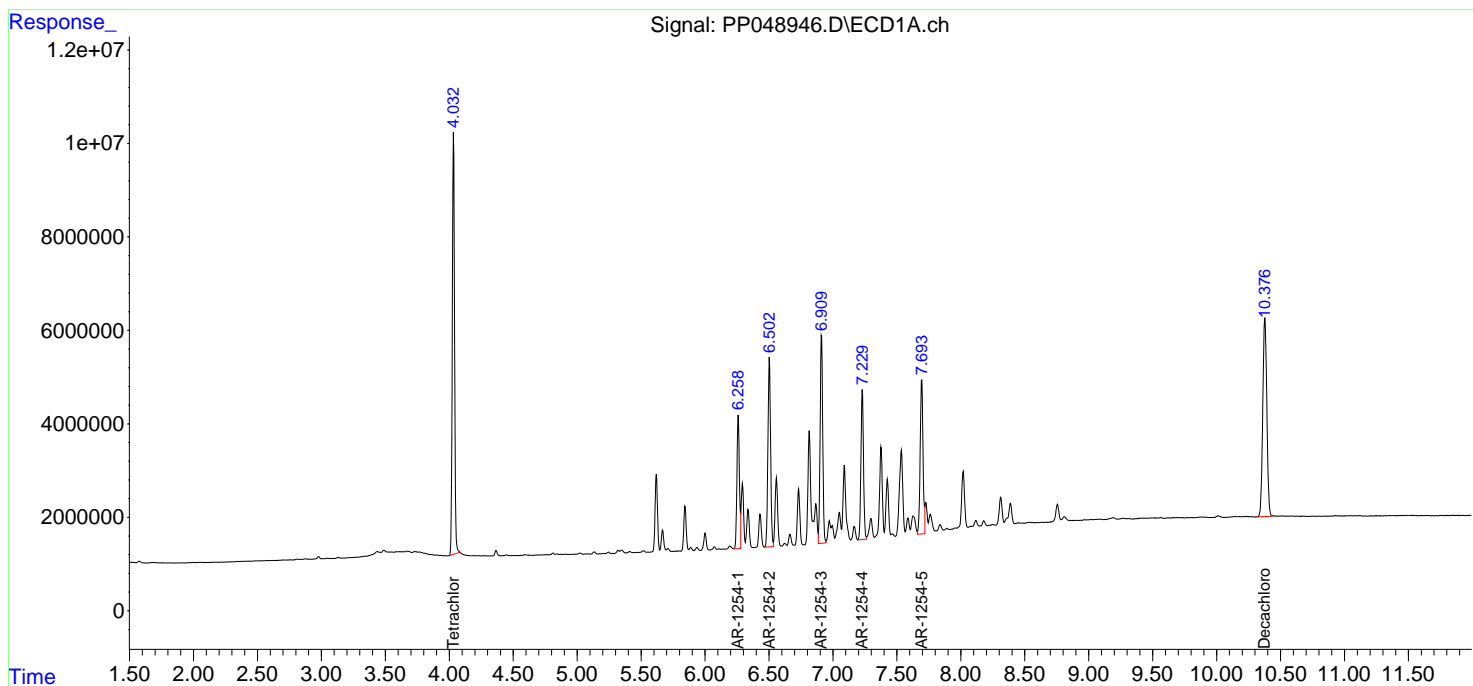
**Instrument :**  
 ECD\_P  
**ClientSampleId :**  
 AR1254CCC500

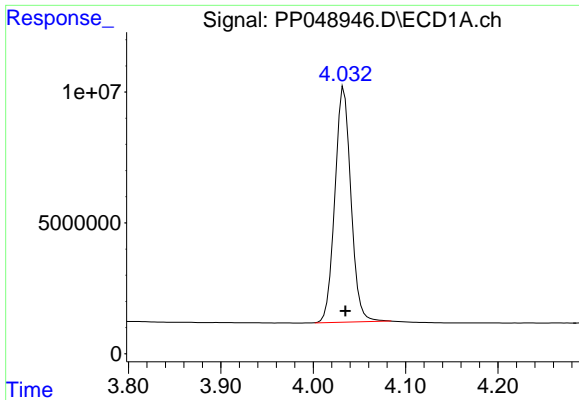
**Manual Integrations**  
**APPROVED**

Reviewed By :Yogesh Patel 06/21/2022  
 Supervised By :Ankita Jodhani 06/22/2022

Integration File signal 1: autoint1.e  
 Integration File signal 2: autoint2.e  
 Quant Time: Jun 20 17:30:52 2022  
 Quant Method : Z:\pestpcbsrv\HPCHEM1\ECD\_P\methods\PP060722.M  
 Quant Title : GC EXTRACTABLES  
 QLast Update : Tue Jun 07 11:09:40 2022  
 Response via : Initial Calibration  
 Integrator: ChemStation

Volume Inj. : 2 µl  
 Signal #1 Phase : ZB-MR1 Signal #2 Phase: ZB-MR2  
 Signal #1 Info : 30Mx0.32mmx 0.50µ Signal #2 Info : 30M x 0.32mm x 0.25µm





#1 Tetrachloro-m-xylene

R.T.: 4.032 min  
 Delta R.T.: -0.003 min  
 Response: 108215210  
 Conc: 45.16 ng/ml

Instrument :

ECD\_P

ClientSampleId :

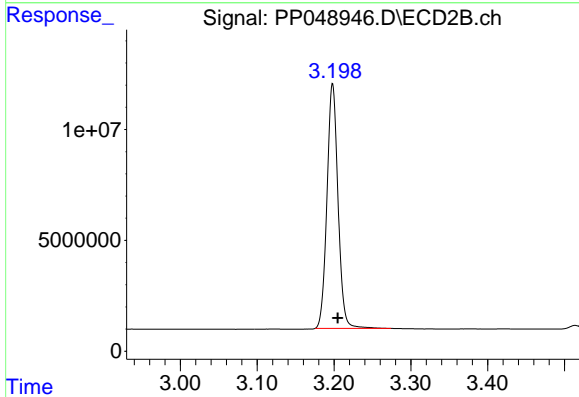
AR1254CCC500

Manual Integrations

APPROVED

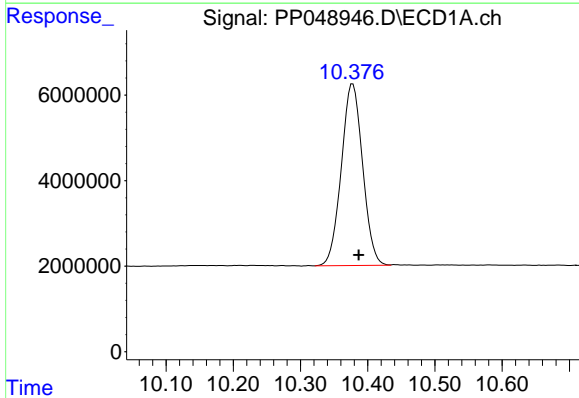
Reviewed By :Yogesh Patel 06/21/2022

Supervised By :Ankita Jodhani 06/22/2022



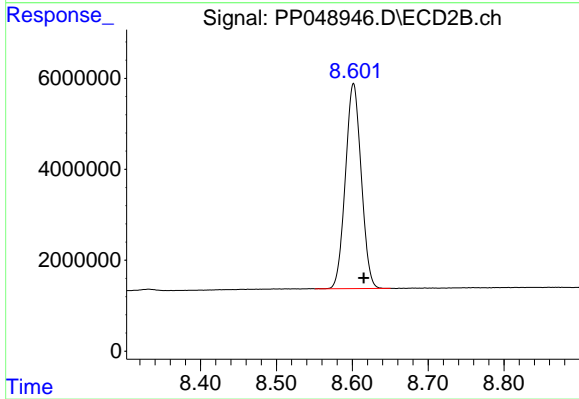
#1 Tetrachloro-m-xylene

R.T.: 3.198 min  
 Delta R.T.: -0.006 min  
 Response: 109925300  
 Conc: 57.75 ng/ml



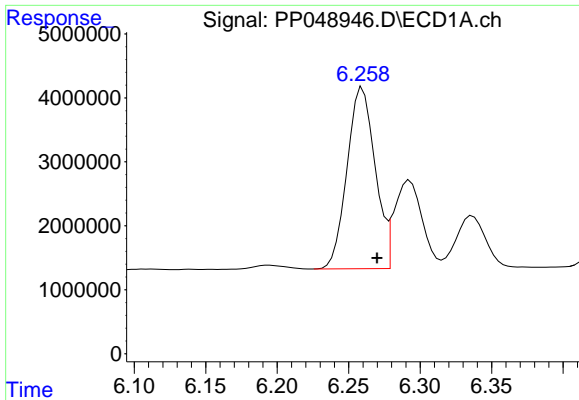
#2 Decachlorobiphenyl

R.T.: 10.378 min  
 Delta R.T.: -0.009 min  
 Response: 93305194  
 Conc: 48.95 ng/ml



#2 Decachlorobiphenyl

R.T.: 8.602 min  
 Delta R.T.: -0.013 min  
 Response: 65350899  
 Conc: 53.37 ng/ml



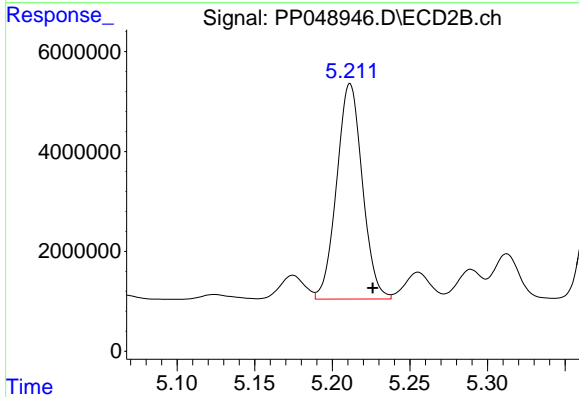
#26 AR-1254-1

R.T.: 6.260 min  
 Delta R.T.: -0.010 min  
 Response: 38726483  
 Conc: 416.42 ng/ml

Instrument : ECD\_P  
 ClientSampleId : AR1254CCC500

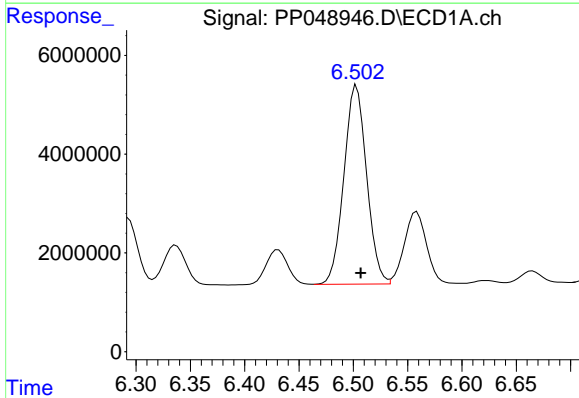
Manual Integrations  
 APPROVED

Reviewed By :Yogesh Patel 06/21/2022  
 Supervised By :Ankita Jodhani 06/22/2022



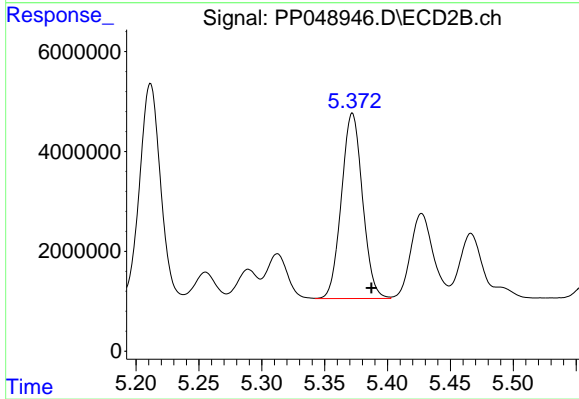
#26 AR-1254-1

R.T.: 5.212 min  
 Delta R.T.: -0.015 min  
 Response: 49720170  
 Conc: 491.84 ng/ml



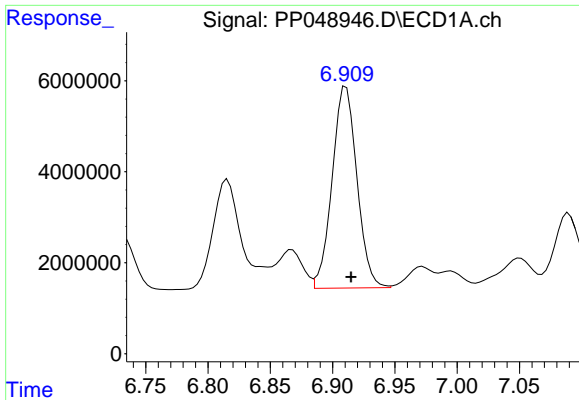
#27 AR-1254-2

R.T.: 6.503 min  
 Delta R.T.: -0.004 min  
 Response: 58699729  
 Conc: 423.18 ng/ml



#27 AR-1254-2

R.T.: 5.372 min  
 Delta R.T.: -0.015 min  
 Response: 43344608  
 Conc: 492.26 ng/ml



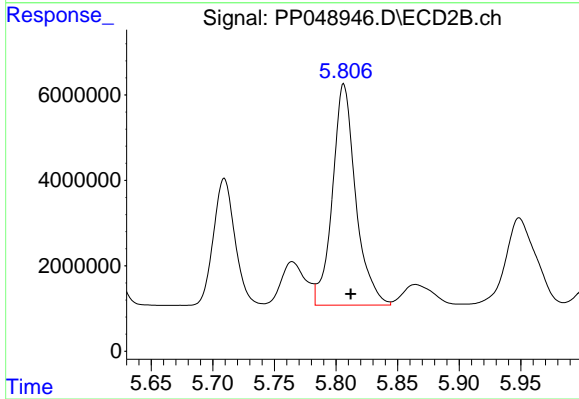
#28 AR-1254-3

R.T.: 6.911 min  
 Delta R.T.: -0.004 min  
 Response: 61433785  
 Conc: 432.08 ng/ml

Instrument :  
 ECD\_P  
 ClientSampleId :  
 AR1254CCC500

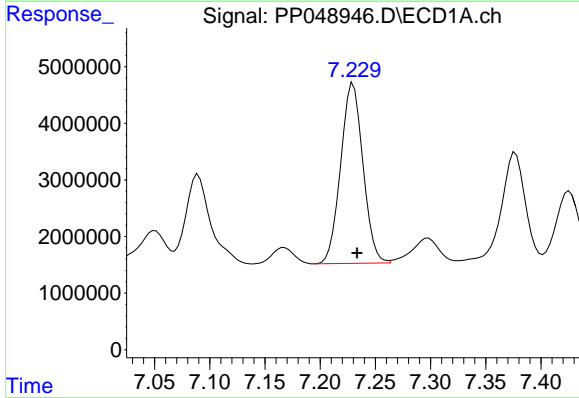
Manual Integrations  
 APPROVED

Reviewed By :Yogesh Patel 06/21/2022  
 Supervised By :Ankita Jodhani 06/22/2022



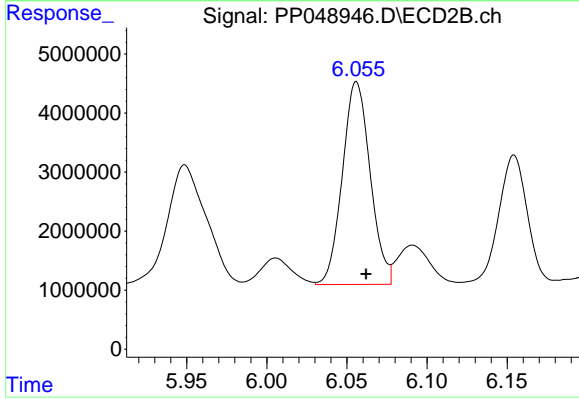
#28 AR-1254-3

R.T.: 5.806 min  
 Delta R.T.: -0.006 min  
 Response: 68075845  
 Conc: 489.72 ng/ml



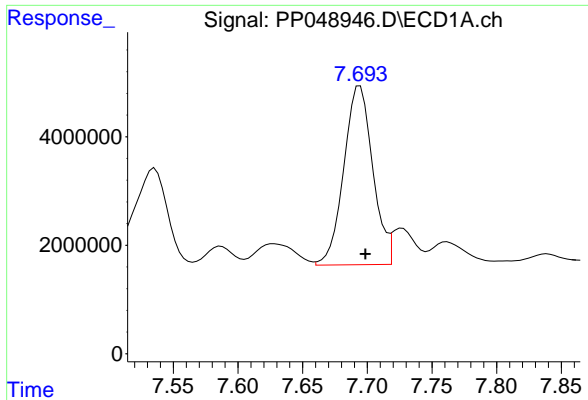
#29 AR-1254-4

R.T.: 7.230 min  
 Delta R.T.: -0.004 min  
 Response: 44779360  
 Conc: 420.21 ng/ml



#29 AR-1254-4

R.T.: 6.056 min  
 Delta R.T.: -0.006 min  
 Response: 41549729  
 Conc: 479.14 ng/ml



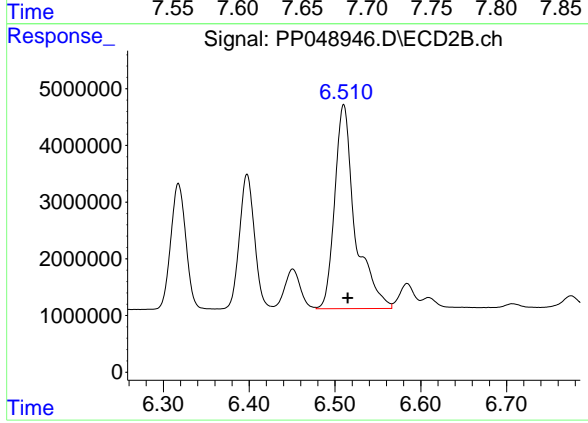
#30 AR-1254-5

R.T.: 7.694 min  
 Delta R.T.: -0.004 min  
 Response: 51143296  
 Conc: 430.82 ng/ml

Instrument :  
 ECD\_P  
 ClientSampleId :  
 AR1254CCC500

Manual Integrations  
 APPROVED

Reviewed By :Yogesh Patel 06/21/2022  
 Supervised By :Ankita Jodhani 06/22/2022



#30 AR-1254-5

R.T.: 6.510 min  
 Delta R.T.: -0.005 min  
 Response: 59435447  
 Conc: 484.61 ng/ml