

Data Path : Z:\pestpcbsrv\HPCHEM1\ECD_P\Data\PP062023\
 Data File : PP058565.D
 Signal(s) : Signal #1: ECD1A.ch Signal #2: ECD2B.ch
 Acq On : 20 Jun 2023 23:05
 Operator : YP\AJ
 Sample : AR1242IC050
 Misc :
 ALS Vial : 14 Sample Multiplier: 1

Instrument :
 ECD_P
ClientSampleId :
 AR1242IC050

Integration File signal 1: autoint1.e
 Integration File signal 2: autoint2.e
 Quant Time: Jun 21 04:45:06 2023
 Quant Method : Z:\pestpcbsrv\HPCHEM1\ECD_P\methods\PP062023.M
 Quant Title : GC EXTRACTABLES
 QLast Update : Wed Jun 21 04:44:57 2023
 Response via : Initial Calibration
 Integrator: ChemStation

Volume Inj. : 2 µl
 Signal #1 Phase : ZB-MR1 Signal #2 Phase: ZB-MR2
 Signal #1 Info : 30Mx0.32mmx 0.50µ Signal #2 Info : 30M x 0.32mm x 0.25µm

Compound	RT#1	RT#2	Resp#1	Resp#2	ng/ml	ng/ml

System Monitoring Compounds						
1) SA Tetrachlo...	4.459	3.671	12124346	7911600	4.702	4.634
2) SA Decachlor...	10.276	8.729	5943760	6045142	4.483	4.889
Target Compounds						
16) L4 AR-1242-1	5.636	4.770	2839226	1942060	50.752	48.946
17) L4 AR-1242-2	5.659	4.789	4024394	2675978	50.124	48.153
18) L4 AR-1242-3	5.721	4.967	2545582	1293996	50.288	44.007
19) L4 AR-1242-4	5.820	5.051	1949792	1562877	48.795	48.330
20) L4 AR-1242-5	6.560	5.578	1771032	1838385	48.730	48.472

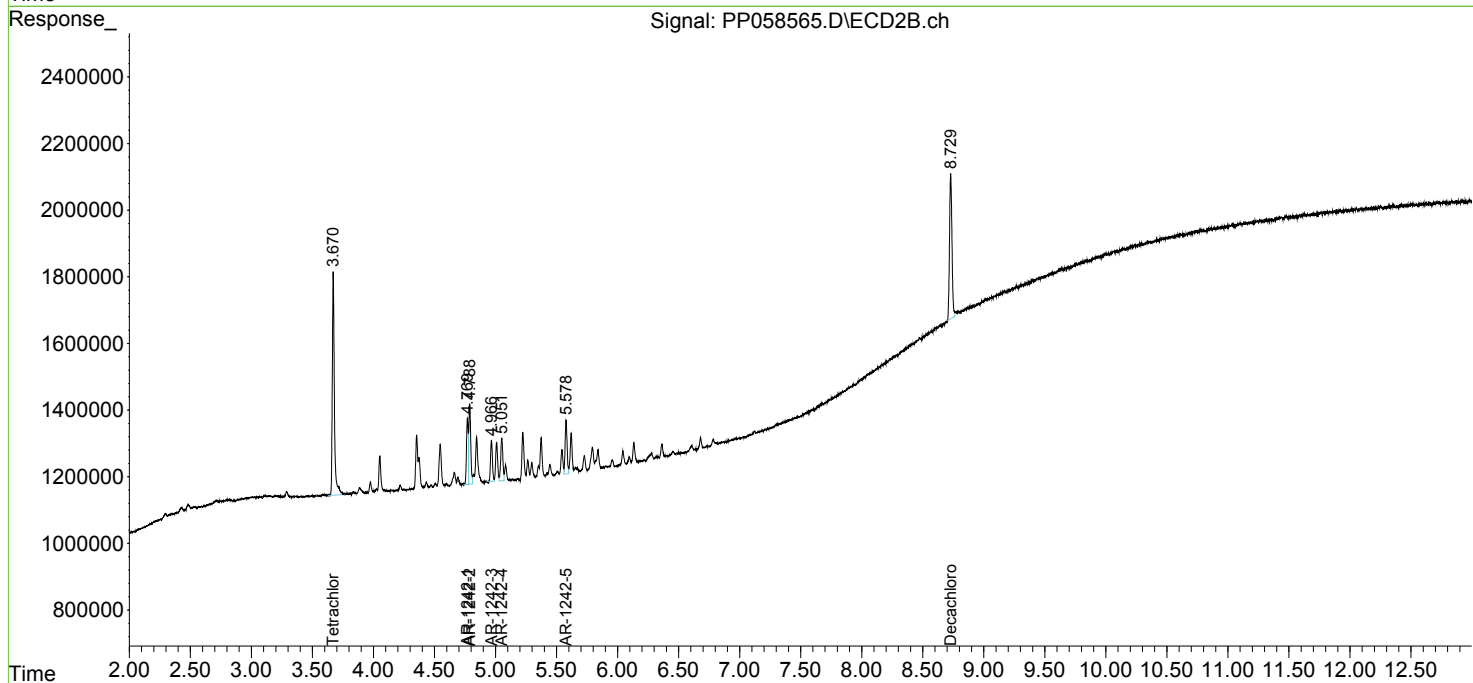
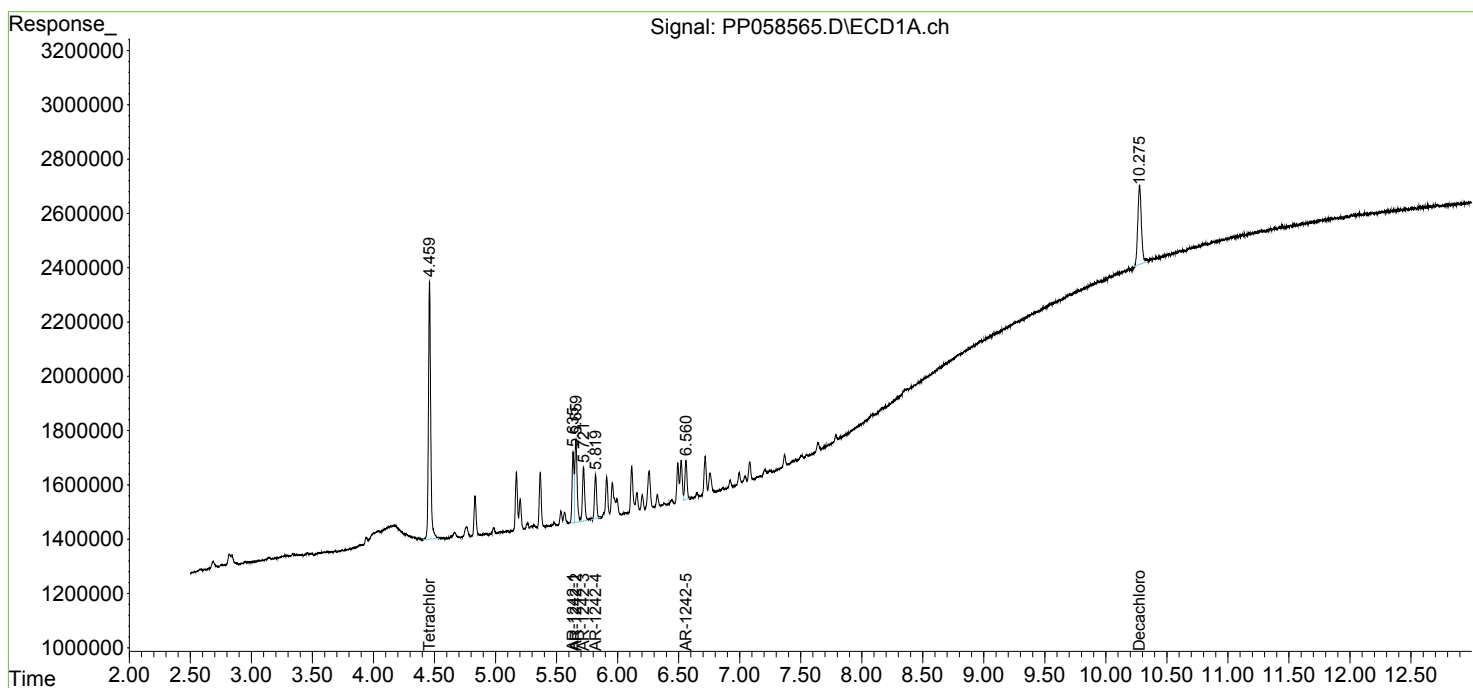
(f)=RT Delta > 1/2 Window (#)=Amounts differ by > 25% (m)=manual int.

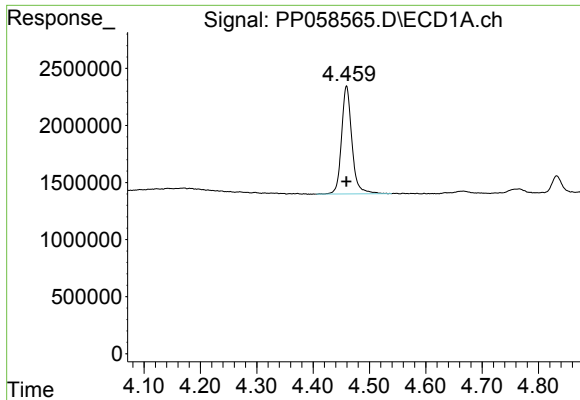
Data Path : Z:\pestpcbsrv\HPCHEM1\ECD_P\Data\PP062023\
 Data File : PP058565.D
 Signal(s) : Signal #1: ECD1A.ch Signal #2: ECD2B.ch
 Acq On : 20 Jun 2023 23:05
 Operator : YP\AJ
 Sample : AR1242ICC050
 Misc :
 ALS Vial : 14 Sample Multiplier: 1

Instrument :
 ECD_P
 ClientSampleId :
 AR1242ICC050

Integration File signal 1: autoint1.e
 Integration File signal 2: autoint2.e
 Quant Time: Jun 21 04:45:06 2023
 Quant Method : Z:\pestpcbsrv\HPCHEM1\ECD_P\methods\PP062023.M
 Quant Title : GC EXTRACTABLES
 QLast Update : Wed Jun 21 04:44:57 2023
 Response via : Initial Calibration
 Integrator: ChemStation

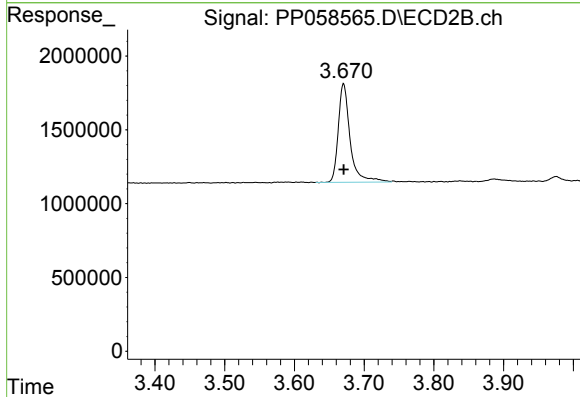
Volume Inj. : 2 µl
 Signal #1 Phase : ZB-MR1 Signal #2 Phase: ZB-MR2
 Signal #1 Info : 30Mx0.32mmx 0.50µ Signal #2 Info : 30M x 0.32mm x 0.25µm



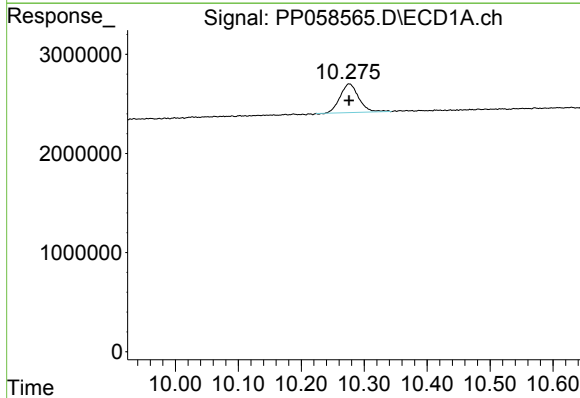


#1 Tetrachloro-m-xylene
 R.T.: 4.459 min
 Delta R.T.: 0.000 min
 Response: 12124346
 Conc: 4.70 ng/ml

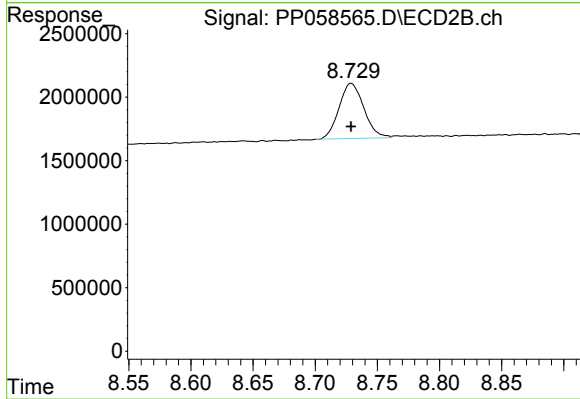
Instrument :
 ECD_P
 ClientSampleId :
 AR1242IC050



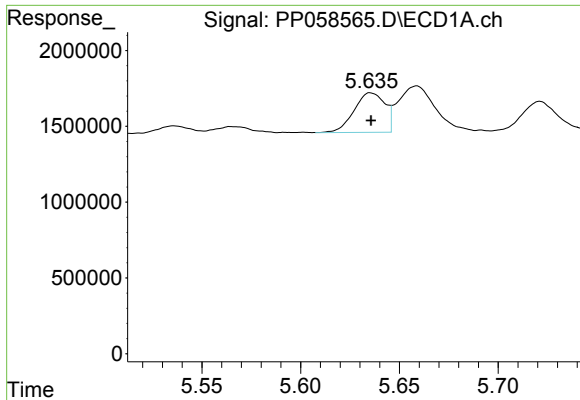
#1 Tetrachloro-m-xylene
 R.T.: 3.671 min
 Delta R.T.: 0.000 min
 Response: 7911600
 Conc: 4.63 ng/ml



#2 Decachlorobiphenyl
 R.T.: 10.276 min
 Delta R.T.: 0.000 min
 Response: 5943760
 Conc: 4.48 ng/ml



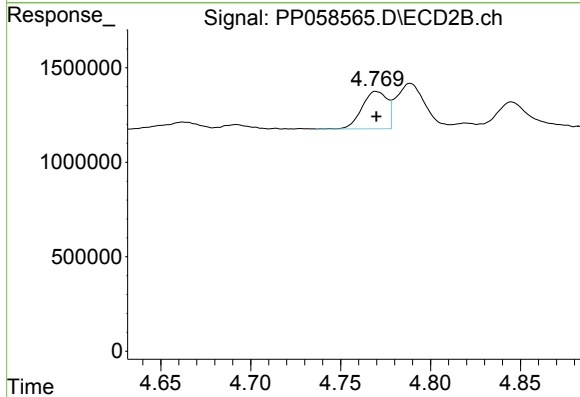
#2 Decachlorobiphenyl
 R.T.: 8.729 min
 Delta R.T.: 0.000 min
 Response: 6045142
 Conc: 4.89 ng/ml



#16 AR-1242-1

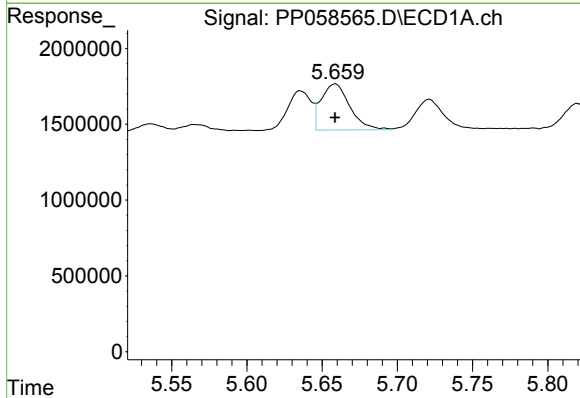
R.T.: 5.636 min
 Delta R.T.: 0.000 min
 Response: 2839226
 Conc: 50.75 ng/ml

Instrument :
 ECD_P
 ClientSampleId :
 AR1242ICC050



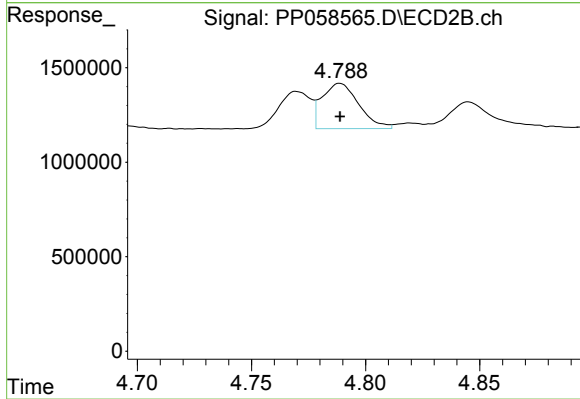
#16 AR-1242-1

R.T.: 4.770 min
 Delta R.T.: 0.000 min
 Response: 1942060
 Conc: 48.95 ng/ml



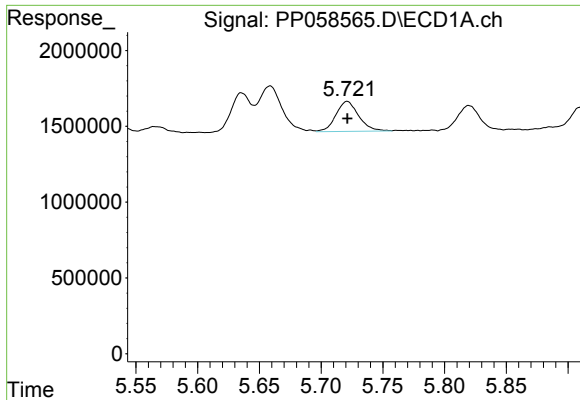
#17 AR-1242-2

R.T.: 5.659 min
 Delta R.T.: 0.000 min
 Response: 4024394
 Conc: 50.12 ng/ml



#17 AR-1242-2

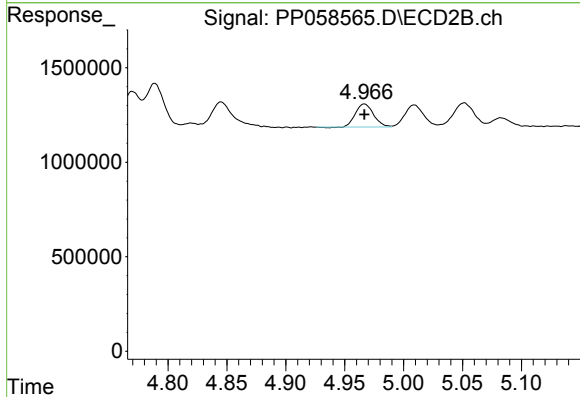
R.T.: 4.789 min
 Delta R.T.: 0.000 min
 Response: 2675978
 Conc: 48.15 ng/ml



#18 AR-1242-3

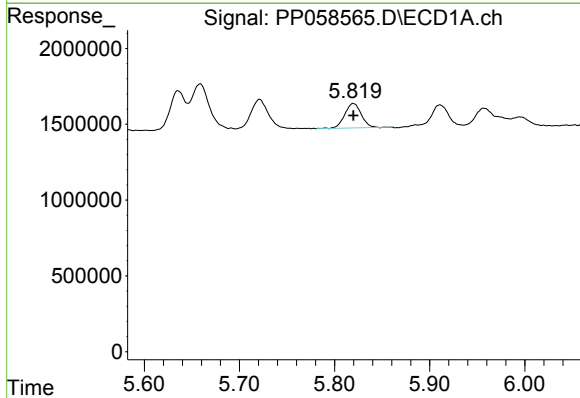
R.T.: 5.721 min
 Delta R.T.: 0.000 min
 Response: 2545582
 Conc: 50.29 ng/ml

Instrument :
 ECD_P
 ClientSampleId :
 AR1242ICC050



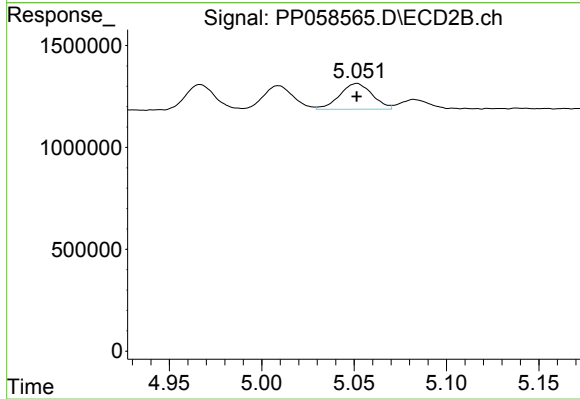
#18 AR-1242-3

R.T.: 4.967 min
 Delta R.T.: 0.000 min
 Response: 1293996
 Conc: 44.01 ng/ml



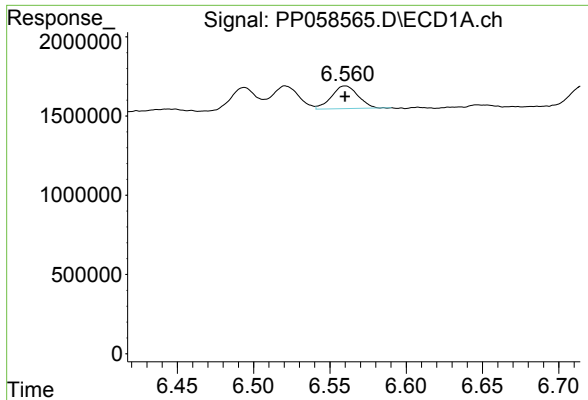
#19 AR-1242-4

R.T.: 5.820 min
 Delta R.T.: 0.000 min
 Response: 1949792
 Conc: 48.80 ng/ml



#19 AR-1242-4

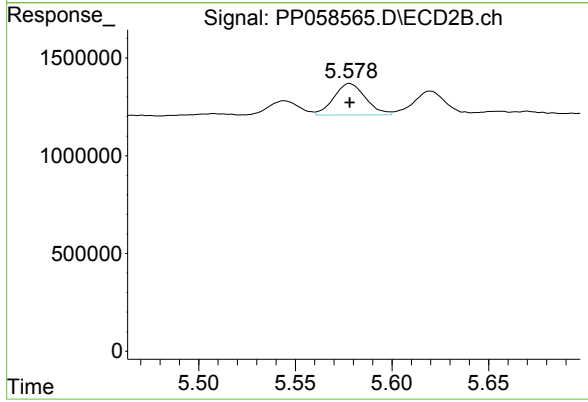
R.T.: 5.051 min
 Delta R.T.: 0.000 min
 Response: 1562877
 Conc: 48.33 ng/ml



#20 AR-1242-5

R.T.: 6.560 min
Delta R.T.: 0.000 min
Response: 1771032
Conc: 48.73 ng/ml

Instrument :
ECD_P
ClientSampleId :
AR1242ICC050



#20 AR-1242-5

R.T.: 5.578 min
Delta R.T.: 0.000 min
Response: 1838385
Conc: 48.47 ng/ml