

Data Path : Z:\pestpcbsrv\HPCHEM1\ECD_P\Data\PP062023\
 Data File : PP058579.D
 Signal(s) : Signal #1: ECD1A.ch Signal #2: ECD2B.ch
 Acq On : 21 Jun 2023 02:52
 Operator : YP\AJ
 Sample : AR1242ICV500
 Misc :
 ALS Vial : 28 Sample Multiplier: 1

Instrument :
 ECD_P
ClientSampleId :
 ICVPP062023AR1242

Integration File signal 1: autoint1.e
 Integration File signal 2: autoint2.e
 Quant Time: Jun 21 04:46:36 2023
 Quant Method : Z:\pestpcbsrv\HPCHEM1\ECD_P\methods\PP062023.M
 Quant Title : GC EXTRACTABLES
 QLast Update : Wed Jun 21 04:46:07 2023
 Response via : Initial Calibration
 Integrator: ChemStation

Volume Inj. : 2 µl
 Signal #1 Phase : ZB-MR1 Signal #2 Phase: ZB-MR2
 Signal #1 Info : 30Mx0.32mmx 0.50µ Signal #2 Info : 30M x 0.32mm x 0.25µm

Compound	RT#1	RT#2	Resp#1	Resp#2	ng/ml	ng/ml

System Monitoring Compounds						
1) SA Tetrachlo...	4.460	3.671	131.4E6	89399513	50.951	52.361
2) SA Decachlor...	10.277	8.729	66507306	62919798	50.165	50.886
Target Compounds						
16) L4 AR-1242-1	5.636	4.770	27965477	20574635	499.892	518.544
17) L4 AR-1242-2	5.660	4.789	40509337	28830958	504.542	518.799
18) L4 AR-1242-3	5.721	4.967	25484866	15726786	503.455	534.842
19) L4 AR-1242-4	5.820	5.051	20174984	16930806	504.897	523.565
20) L4 AR-1242-5	6.561	5.578	18366407	19599155	505.348	516.762

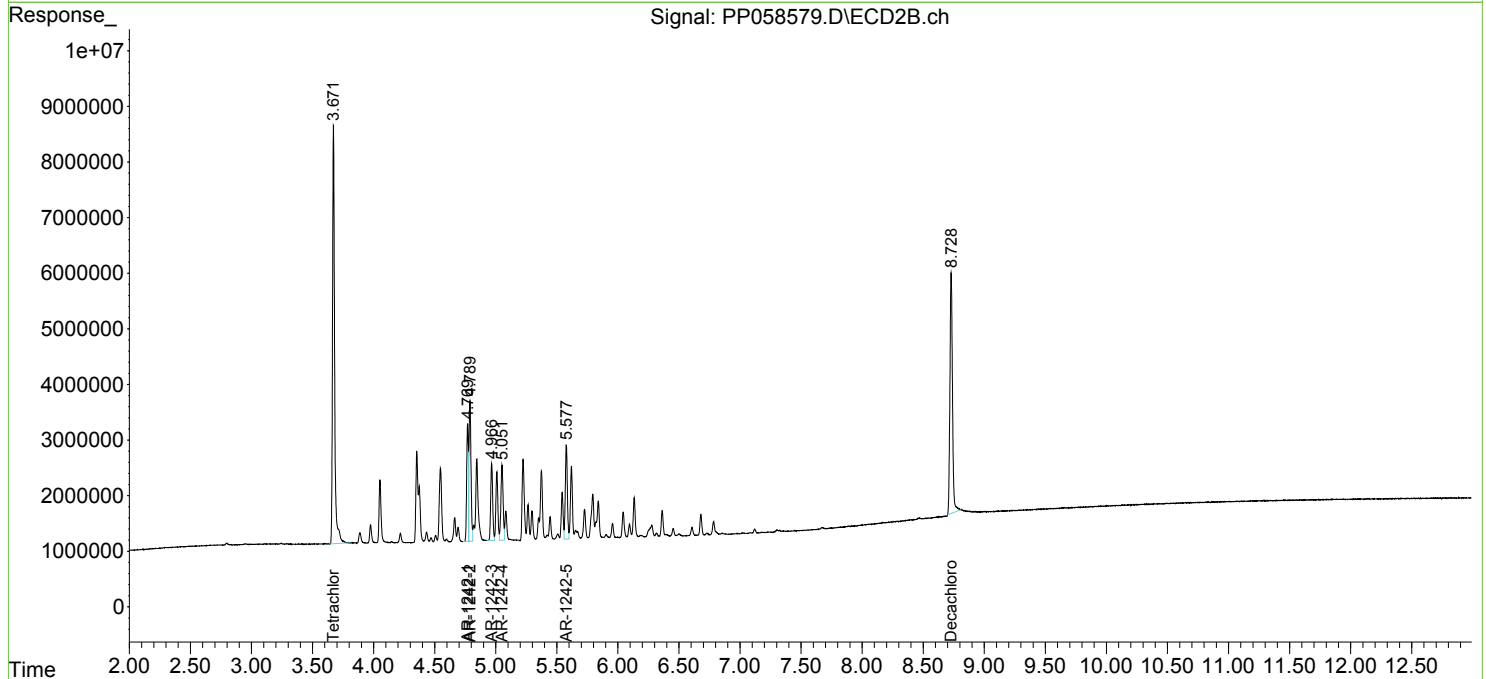
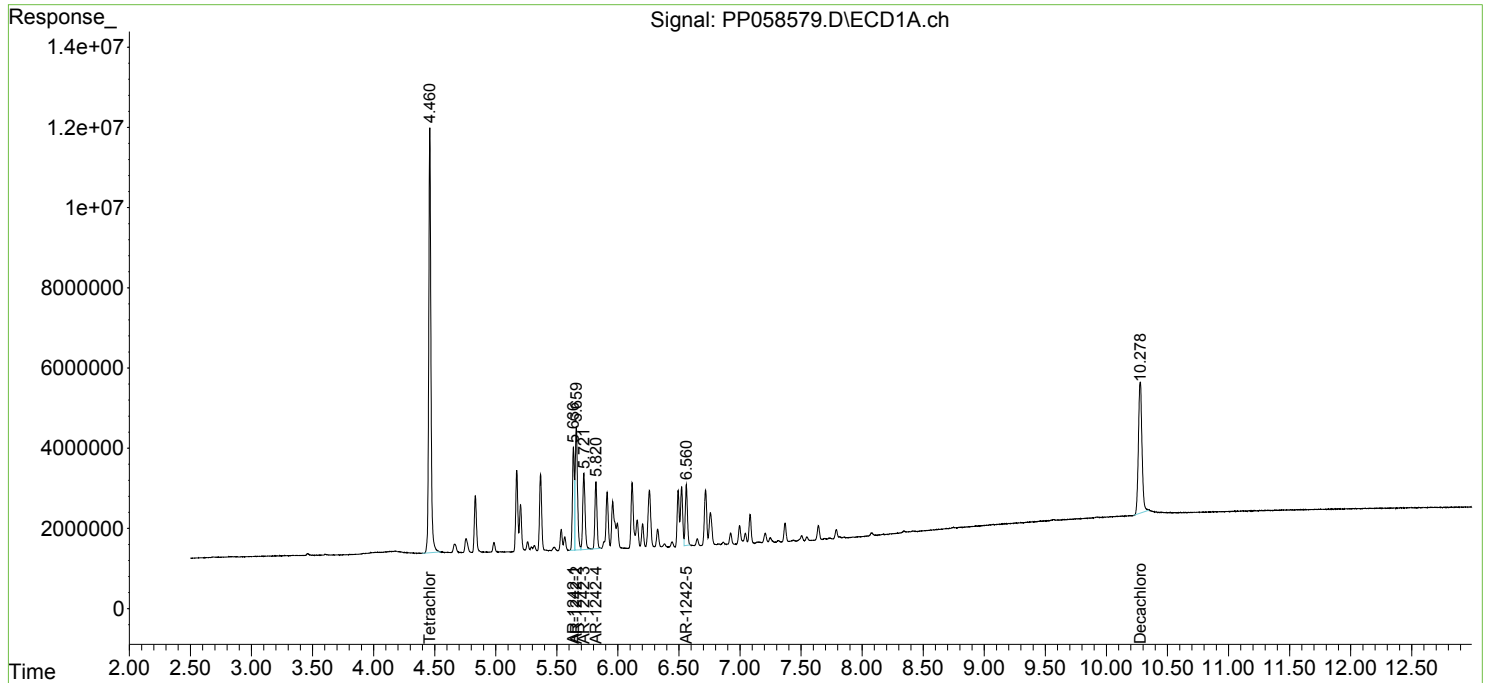
(f)=RT Delta > 1/2 Window (#)=Amounts differ by > 25% (m)=manual int.

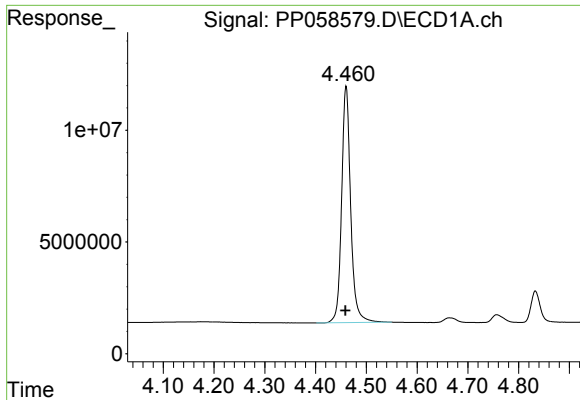
Data Path : Z:\pestpcbsrv\HPCHEM1\ECD_P\Data\PP062023\
 Data File : PP058579.D
 Signal(s) : Signal #1: ECD1A.ch Signal #2: ECD2B.ch
 Acq On : 21 Jun 2023 02:52
 Operator : YP\AJ
 Sample : AR1242ICV500
 Misc :
 ALS Vial : 28 Sample Multiplier: 1

Instrument :
 ECD_P
 ClientSampleId :
 ICVPP062023AR1242

Integration File signal 1: autoint1.e
 Integration File signal 2: autoint2.e
 Quant Time: Jun 21 04:46:36 2023
 Quant Method : Z:\pestpcbsrv\HPCHEM1\ECD_P\methods\PP062023.M
 Quant Title : GC EXTRACTABLES
 QLast Update : Wed Jun 21 04:46:07 2023
 Response via : Initial Calibration
 Integrator: ChemStation

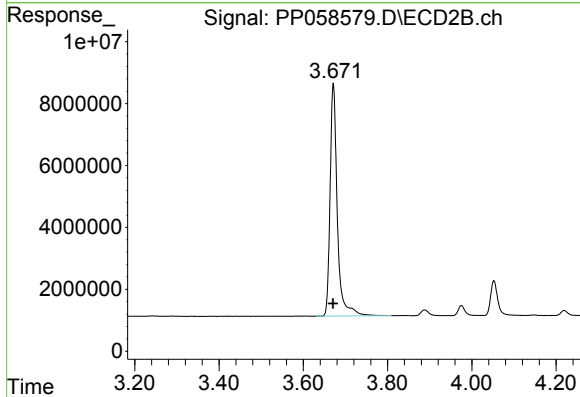
Volume Inj. : 2 µl
 Signal #1 Phase : ZB-MR1 Signal #2 Phase: ZB-MR2
 Signal #1 Info : 30Mx0.32mmx 0.50µ Signal #2 Info : 30M x 0.32mm x 0.25µm



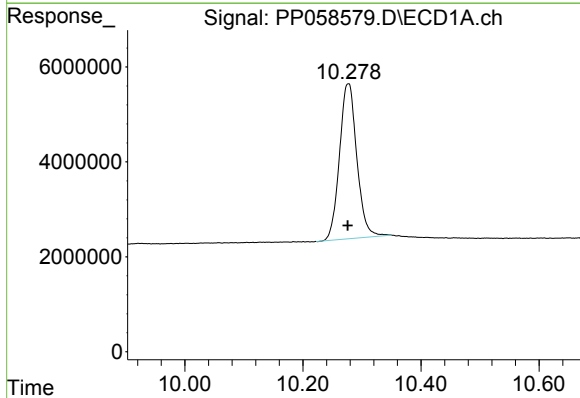


#1 Tetrachloro-m-xylene
 R.T.: 4.460 min
 Delta R.T.: 0.001 min
 Response: 131382009
 Conc: 50.95 ng/ml

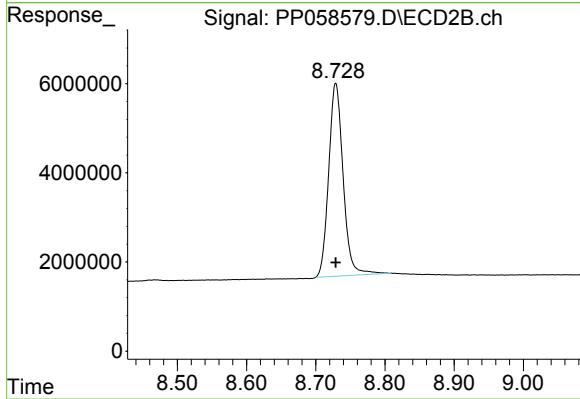
Instrument :
 ECD_P
 ClientSampleId :
 ICVPP062023AR1242



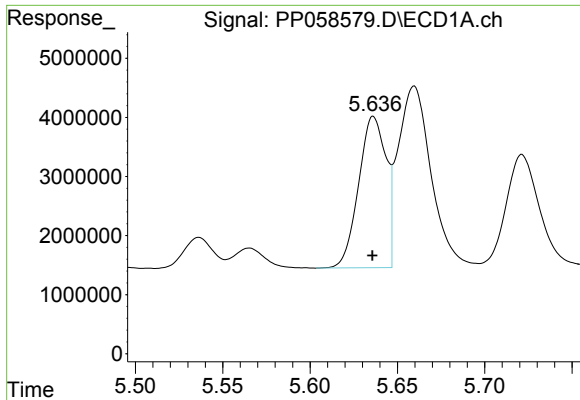
#1 Tetrachloro-m-xylene
 R.T.: 3.671 min
 Delta R.T.: 0.000 min
 Response: 89399513
 Conc: 52.36 ng/ml



#2 Decachlorobiphenyl
 R.T.: 10.277 min
 Delta R.T.: 0.000 min
 Response: 66507306
 Conc: 50.17 ng/ml



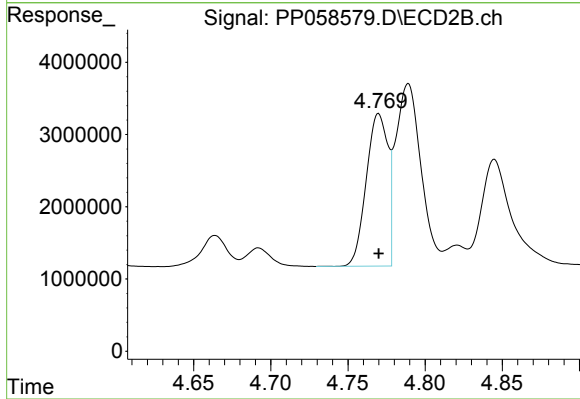
#2 Decachlorobiphenyl
 R.T.: 8.729 min
 Delta R.T.: 0.000 min
 Response: 62919798
 Conc: 50.89 ng/ml



#16 AR-1242-1

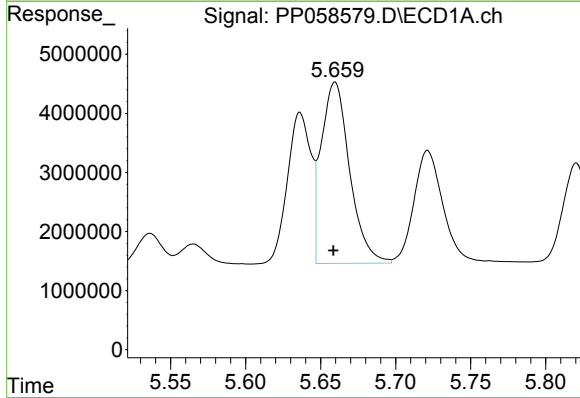
R.T.: 5.636 min
 Delta R.T.: 0.000 min
 Response: 27965477
 Conc: 499.89 ng/ml

Instrument :
 ECD_P
ClientSampleId :
 ICVPP062023AR1242



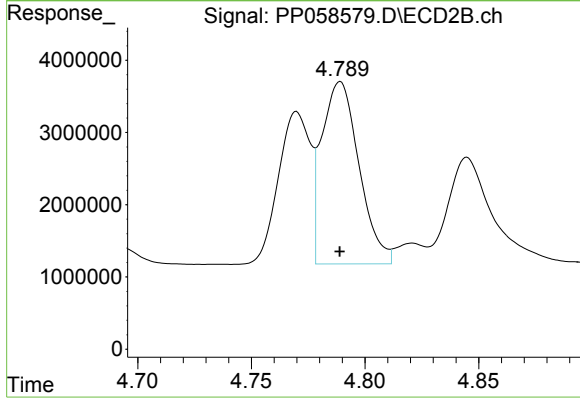
#16 AR-1242-1

R.T.: 4.770 min
 Delta R.T.: 0.000 min
 Response: 20574635
 Conc: 518.54 ng/ml



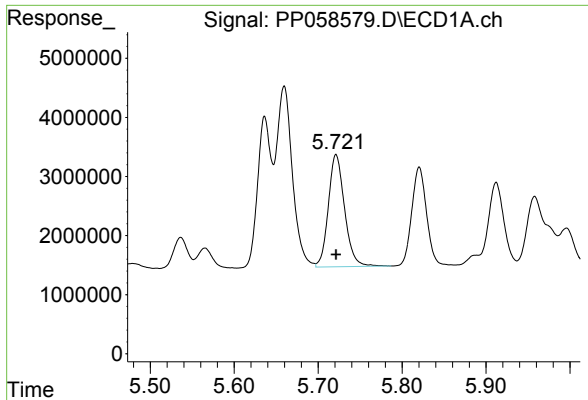
#17 AR-1242-2

R.T.: 5.660 min
 Delta R.T.: 0.000 min
 Response: 40509337
 Conc: 504.54 ng/ml



#17 AR-1242-2

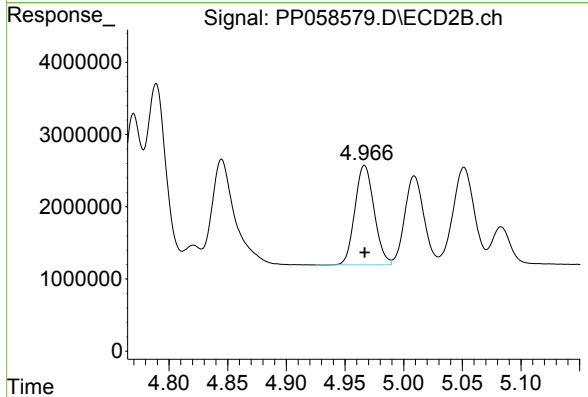
R.T.: 4.789 min
 Delta R.T.: 0.000 min
 Response: 28830958
 Conc: 518.80 ng/ml



#18 AR-1242-3

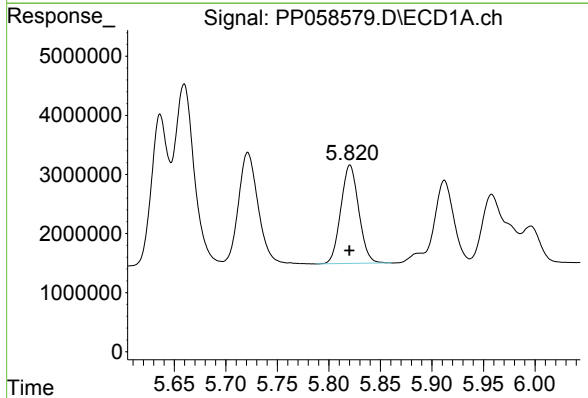
R.T.: 5.721 min
 Delta R.T.: 0.000 min
 Response: 25484866
 Conc: 503.45 ng/ml

Instrument :
 ECD_P
 ClientSampleId :
 ICVPP062023AR1242



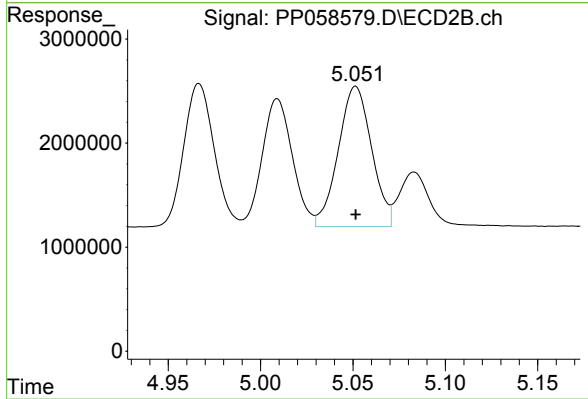
#18 AR-1242-3

R.T.: 4.967 min
 Delta R.T.: 0.000 min
 Response: 15726786
 Conc: 534.84 ng/ml



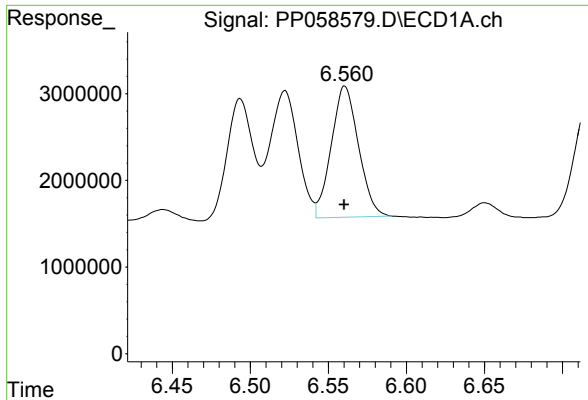
#19 AR-1242-4

R.T.: 5.820 min
 Delta R.T.: 0.000 min
 Response: 20174984
 Conc: 504.90 ng/ml



#19 AR-1242-4

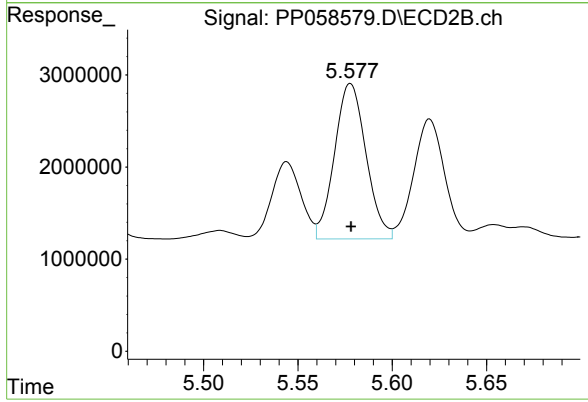
R.T.: 5.051 min
 Delta R.T.: 0.000 min
 Response: 16930806
 Conc: 523.56 ng/ml



#20 AR-1242-5

R.T.: 6.561 min
 Delta R.T.: 0.000 min
 Response: 18366407
 Conc: 505.35 ng/ml

Instrument :
 ECD_P
ClientSampleId :
 ICVPP062023AR1242



#20 AR-1242-5

R.T.: 5.578 min
 Delta R.T.: 0.000 min
 Response: 19599155
 Conc: 516.76 ng/ml