

Data Path : Z:\pestpcbsrv\HPCHEM1\ECD_P\Data\PP062121\
 Data File : PP036660.D
 Signal(s) : Signal #1: ECD1A.CH Signal #2: ECD2B.CH
 Acq On : 21 Jun 2021 18:17
 Operator : DD\AJ
 Sample : M2774-04RE
 Misc :
 ALS Vial : 18 Sample Multiplier: 1

Instrument :
 ECD_P
 ClientSampleId :
 ETGI-305

Integration File signal 1: autoint1.e
 Integration File signal 2: autoint2.e
 Quant Time: Jun 22 04:06:56 2021
 Quant Method : Z:\pestpcbsrv\HPCHEM1\ECD_P\methods\PP061721.M
 Quant Title : GC EXTRACTABLES
 QLast Update : Fri Jun 18 06:06:19 2021
 Response via : Initial Calibration
 Integrator: ChemStation 6890 Scale Mode: Small noise peaks clipped

Volume Inj. : 2 µl
 Signal #1 Phase : ZB-MR1 Signal #2 Phase: ZB-MR2
 Signal #1 Info : 30Mx0.32mmx 0.50µ Signal #2 Info : 30M x 0.32mm x 0.25µm

Compound	RT#1	RT#2	Resp#1	Resp#2	ng/ml	ng/ml

System Monitoring Compounds						
1) SA Tetrachlo...	4.966	3.958	1001283	695934	22.654	22.469
2) SA Decachlor...	11.003	9.261	944718	624210	22.023	19.518
Target Compounds						
3) L1 AR-1016-1	6.292	5.212	83486	11787	49.288	9.998 #
4) L1 AR-1016-2	6.323	5.212f	65562	11787	27.190	7.257 #
5) L1 AR-1016-3	6.372	0.000	65572	0	42.655	N.D. #
6) L1 AR-1016-4	6.495	5.501f	40284	182344	31.336	256.866 #
8) L2 AR-1221-1	5.214	4.239f	129667	34213	230.965	87.916 #
9) L2 AR-1221-2	5.315	4.310	29632	8644	68.763	28.959 #
10) L2 AR-1221-3	5.417	4.401	53363	18113	41.392	20.058 #
11) L3 AR-1232-1	5.417f	4.401	53363	18113	50.103	24.621 #
12) L3 AR-1232-2	5.996	5.212f	100436	11787	182.619	17.627 #
13) L3 AR-1232-3	6.323	0.000	65562	0	64.178	N.D. #
14) L3 AR-1232-4	6.495	5.501f	40284	182344	74.631	582.305 #
15) L3 AR-1232-5	6.600f	0.000	15566	0	42.471	N.D. #
16) L4 AR-1242-1	6.292	5.212	83486	11787	65.104	13.242 #
17) L4 AR-1242-2	6.323	5.212f	65562	11787	35.928	9.663 #
18) L4 AR-1242-3	6.372	0.000	65572	0	55.893	N.D. #
19) L4 AR-1242-4	6.495	5.501f	40284	182344	41.626	281.644 #
20) L4 AR-1242-5	7.254	6.107f	106309	262030	101.066	321.153 #
21) L5 AR-1248-1	6.292	5.212	83486	11787	82.756	16.916 #
22) L5 AR-1248-2	6.600f	5.501f	15566	182344	11.462	192.513 #
23) L5 AR-1248-3	6.803	5.501f	-25612	182344	N.D.	184.291 #
24) L5 AR-1248-4	7.201f	0.000	388377	0	212.722	N.D. #
25) L5 AR-1248-5	7.254	6.107f	106309	262030	58.961	220.905 #
26) L6 AR-1254-1	7.201	6.107f	388377	262030	220.836	154.648 #
27) L6 AR-1254-2	7.428	0.000	24805	0	9.168	N.D. #
28) L6 AR-1254-3	7.823f	0.000	90935	0	30.700	N.D. #
29) L6 AR-1254-4	8.115	6.908	8588	10487	3.907	6.777 #
30) L6 AR-1254-5	0.000	7.322	0	189983	N.D.	88.353 #
31) L7 AR-1260-1	0.000	6.800	0	12292	N.D.	7.635 #
32) L7 AR-1260-2	8.215f	7.005	39037	7662	15.231	3.951 #
33) L7 AR-1260-3	8.607	7.178f	435753	18894	217.389	10.389 #
35) L7 AR-1260-5	9.164	7.875	617781	17196	138.457	4.679 #
36) L8 AR-1262-1	8.607	7.322	435753	189983	152.925	159.397
37) L8 AR-1262-2	9.164	7.875	617781	17196	121.591	4.387 #
39) L8 AR-1262-4	0.000	8.219f	0	16292	N.D.	5.474 #
40) L8 AR-1262-5	0.000	8.729	0	24730	N.D.	17.354 #
42) L9 AR-1268-2	0.000	8.219f	0	16292	N.D.	3.777 #
44) L9 AR-1268-4	0.000	8.729	0	24730	N.D.	15.546 #
45) L9 AR-1268-5	10.664	0.000	30700	0	1.996	N.D. #

Data Path : Z:\pestpcbsrv\HPCHEM1\ECD_P\Data\PP062121\
Data File : PP036660.D
Signal(s) : Signal #1: ECD1A.CH Signal #2: ECD2B.CH
Acq On : 21 Jun 2021 18:17
Operator : DD\AJ
Sample : M2774-04RE
Misc :
ALS Vial : 18 Sample Multiplier: 1

Instrument :
ECD_P
ClientSampleId :
ETGI-305

Integration File signal 1: autoint1.e
Integration File signal 2: autoint2.e
Quant Time: Jun 22 04:06:56 2021
Quant Method : Z:\pestpcbsrv\HPCHEM1\ECD_P\methods\PP061721.M
Quant Title : GC EXTRACTABLES
QLast Update : Fri Jun 18 06:06:19 2021
Response via : Initial Calibration
Integrator: ChemStation 6890 Scale Mode: Small noise peaks clipped

Volume Inj. : 2 µl
Signal #1 Phase : ZB-MR1 Signal #2 Phase: ZB-MR2
Signal #1 Info : 30Mx0.32mmx 0.50µ Signal #2 Info : 30M x 0.32mm x 0.25µm

Compound	RT#1	RT#2	Resp#1	Resp#2	ng/ml	ng/ml
----------	------	------	--------	--------	-------	-------

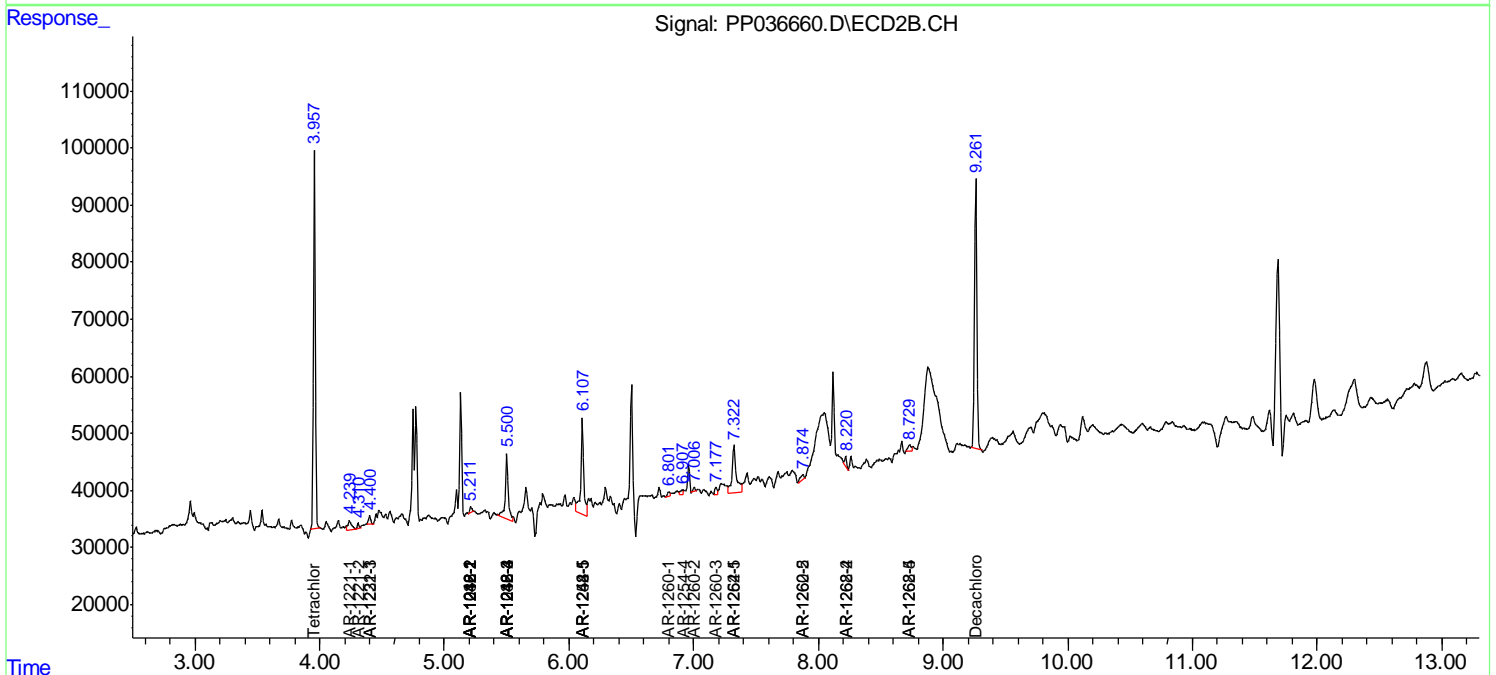
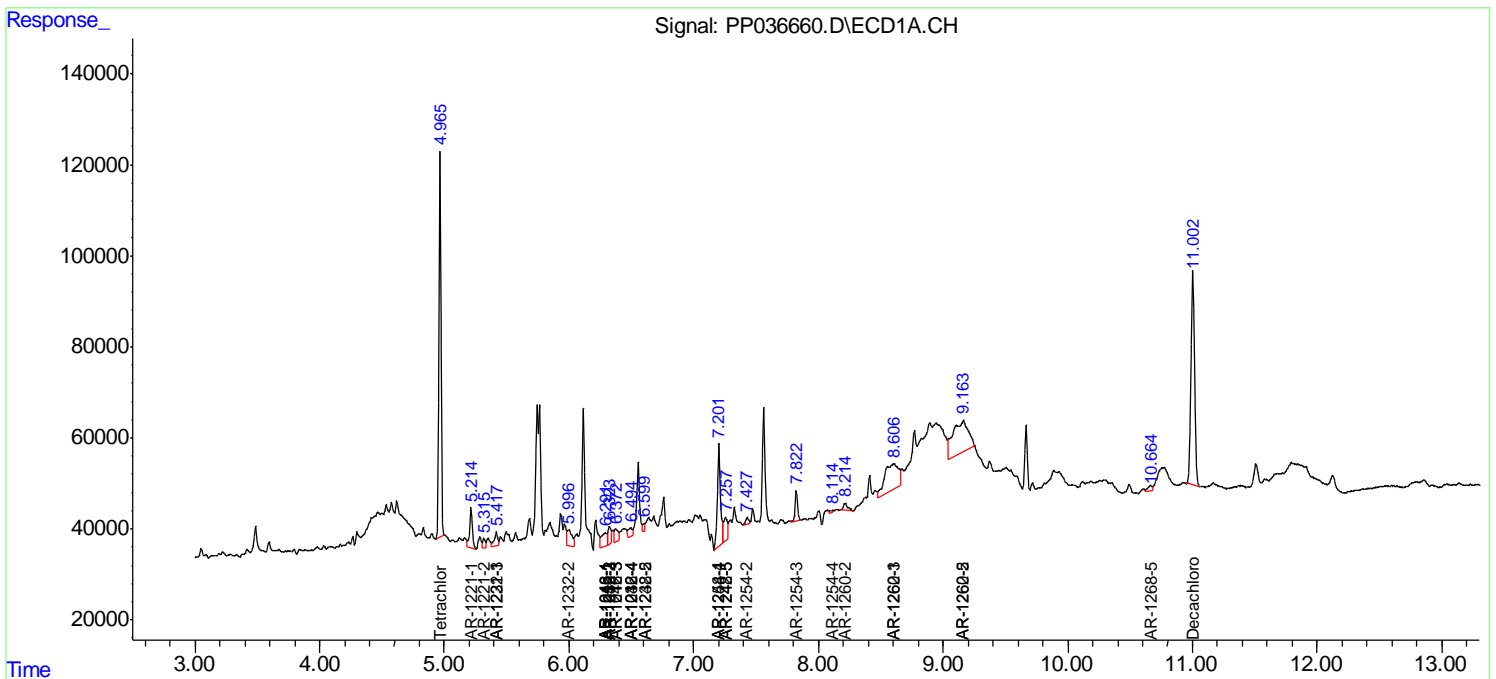
(f)=RT Delta > 1/2 Window (#)=Amounts differ by > 25% (m)=manual int.

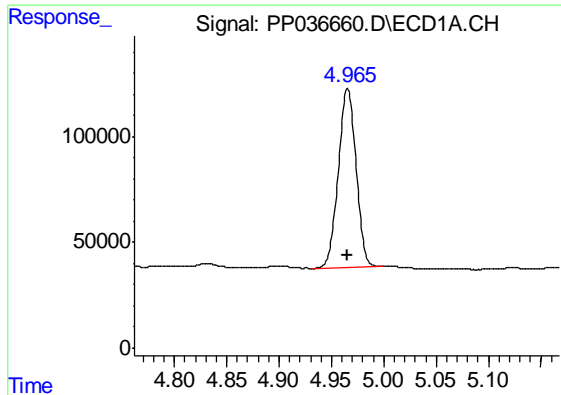
Data Path : Z:\pestpcbsrv\HPCHEM1\ECD_P\Data\PP062121\
 Data File : PP036660.D
 Signal(s) : Signal #1: ECD1A.CH Signal #2: ECD2B.CH
 Acq On : 21 Jun 2021 18:17
 Operator : DD\AJ
 Sample : M2774-04RE
 Misc :
 ALS Vial : 18 Sample Multiplier: 1

Instrument :
 ECD_P
 ClientSampled :
 ETGI-305

Integration File signal 1: autoint1.e
 Integration File signal 2: autoint2.e
 Quant Time: Jun 22 04:06:56 2021
 Quant Method : Z:\pestpcbsrv\HPCHEM1\ECD_P\methods\PP061721.M
 Quant Title : GC EXTRACTABLES
 QLast Update : Fri Jun 18 06:06:19 2021
 Response via : Initial Calibration
 Integrator: ChemStation 6890 Scale Mode: Small noise peaks clipped

Volume Inj. : 2 µl
 Signal #1 Phase : ZB-MR1 Signal #2 Phase: ZB-MR2
 Signal #1 Info : 30Mx0.32mmx 0.50µ Signal #2 Info : 30M x 0.32mm x 0.25µm

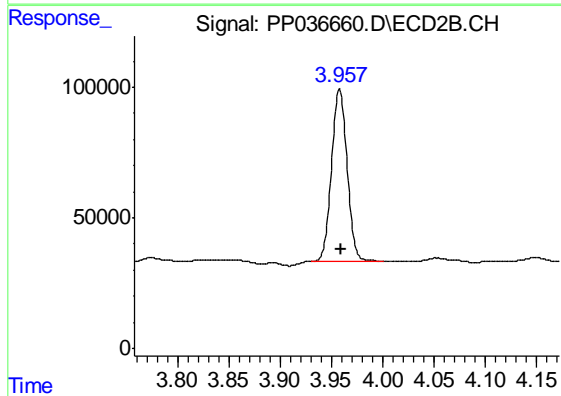




#1 Tetrachloro-m-xylene

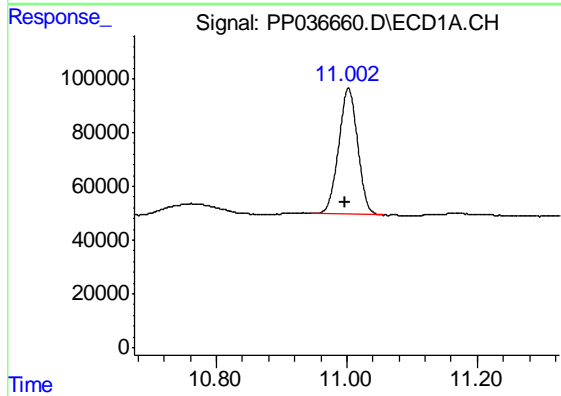
R.T.: 4.966 min
 Delta R.T.: 0.000 min
 Response: 1001283
 Conc: 22.65 ng/ml

Instrument :
 ECD_P
 ClientSampleId :
 ETGI-305



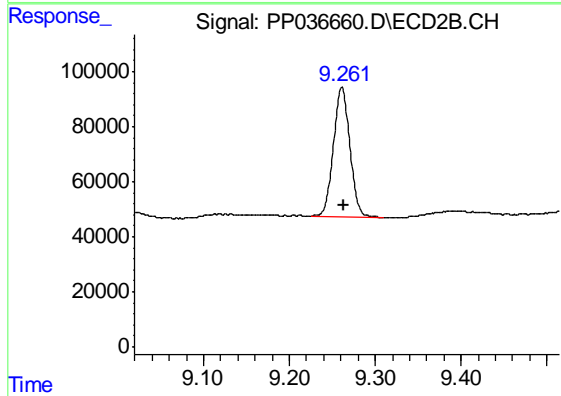
#1 Tetrachloro-m-xylene

R.T.: 3.958 min
 Delta R.T.: -0.001 min
 Response: 695934
 Conc: 22.47 ng/ml



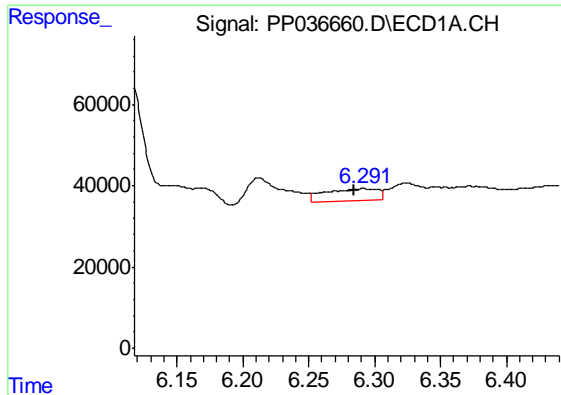
#2 Decachlorobiphenyl

R.T.: 11.003 min
 Delta R.T.: 0.005 min
 Response: 944718
 Conc: 22.02 ng/ml



#2 Decachlorobiphenyl

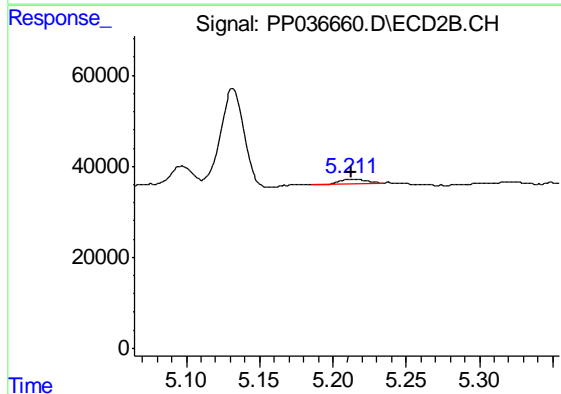
R.T.: 9.261 min
 Delta R.T.: -0.002 min
 Response: 624210
 Conc: 19.52 ng/ml



#3 AR-1016-1

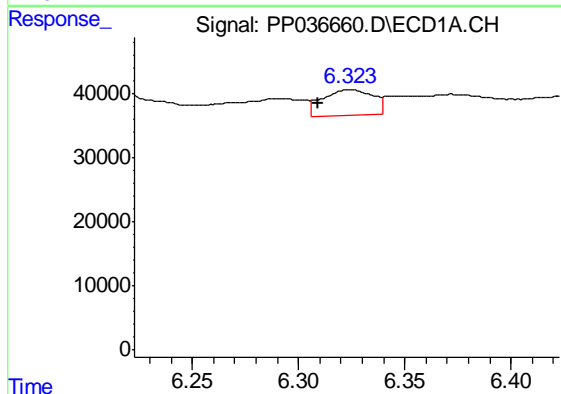
R.T.: 6.292 min
 Delta R.T.: 0.007 min
 Response: 83486
 Conc: 49.29 ng/ml

Instrument :
 ECD_P
 ClientSampleId :
 ETGI-305



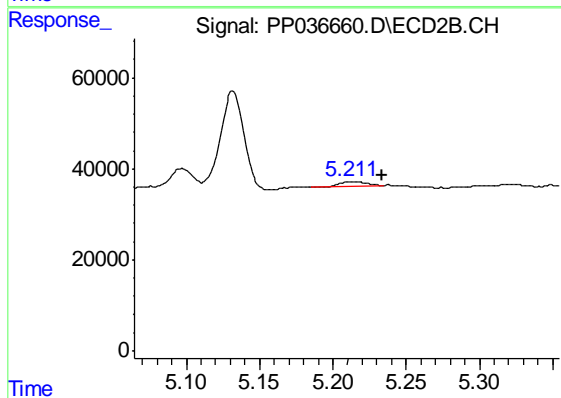
#3 AR-1016-1

R.T.: 5.212 min
 Delta R.T.: 0.000 min
 Response: 11787
 Conc: 10.00 ng/ml



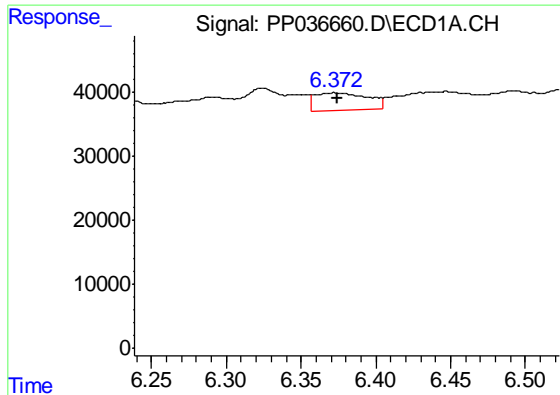
#4 AR-1016-2

R.T.: 6.323 min
 Delta R.T.: 0.014 min
 Response: 65562
 Conc: 27.19 ng/ml



#4 AR-1016-2

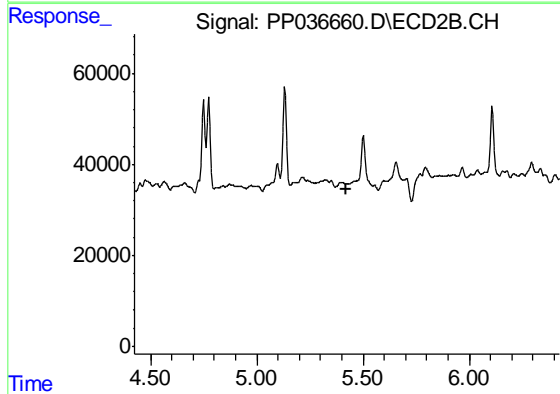
R.T.: 5.212 min
 Delta R.T.: -0.022 min
 Response: 11787
 Conc: 7.26 ng/ml



#5 AR-1016-3

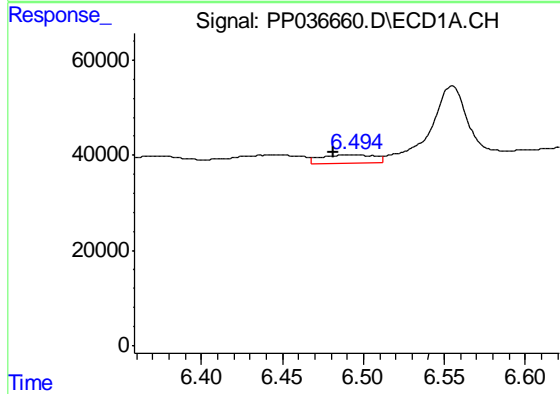
R.T.: 6.372 min
 Delta R.T.: -0.003 min
 Response: 65572
 Conc: 42.66 ng/ml

Instrument :
 ECD_P
 ClientSampleId :
 ETGI-305



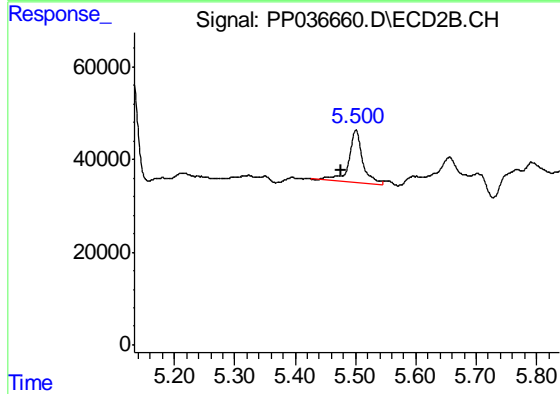
#5 AR-1016-3

R.T.: 0.000 min
 Exp R.T. : 5.424 min
 Response: 0
 Conc: N.D.



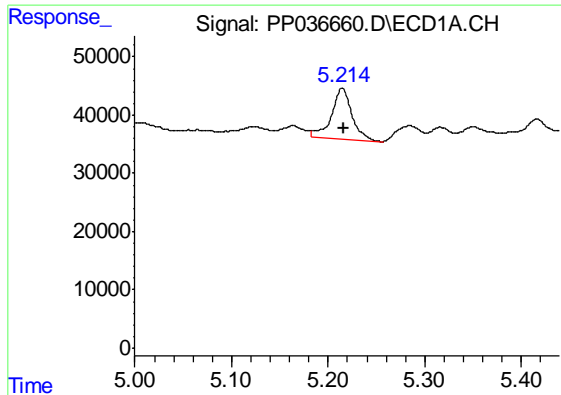
#6 AR-1016-4

R.T.: 6.495 min
 Delta R.T.: 0.013 min
 Response: 40284
 Conc: 31.34 ng/ml



#6 AR-1016-4

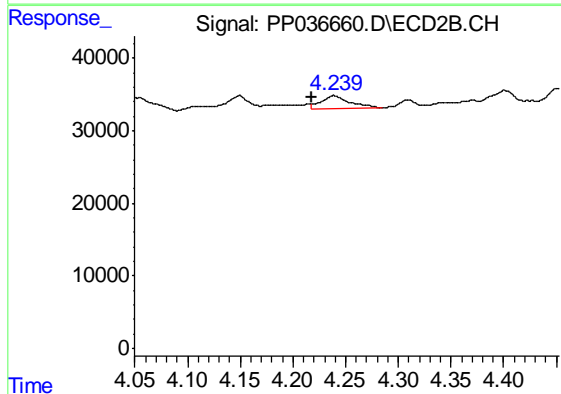
R.T.: 5.501 min
 Delta R.T.: 0.024 min
 Response: 182344
 Conc: 256.87 ng/ml



#8 AR-1221-1

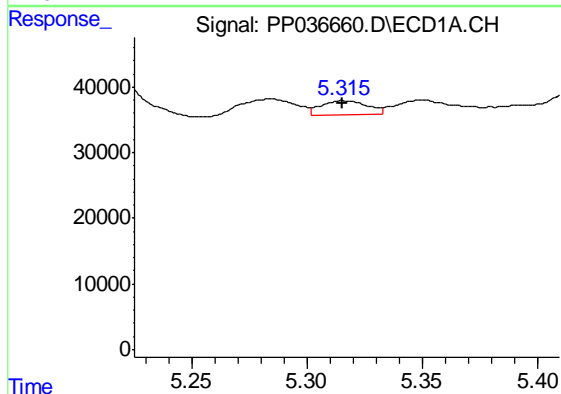
R.T.: 5.214 min
 Delta R.T.: -0.002 min
 Response: 129667
 Conc: 230.96 ng/ml

Instrument :
 ECD_P
 ClientSampleId :
 ETGI-305



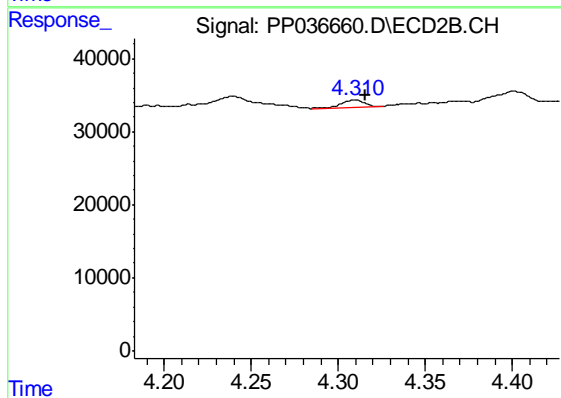
#8 AR-1221-1

R.T.: 4.239 min
 Delta R.T.: 0.022 min
 Response: 34213
 Conc: 87.92 ng/ml



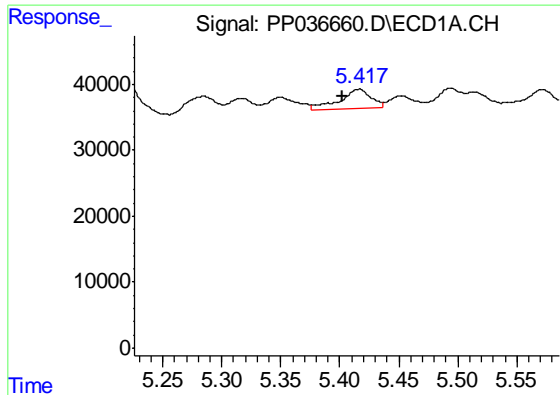
#9 AR-1221-2

R.T.: 5.315 min
 Delta R.T.: 0.000 min
 Response: 29632
 Conc: 68.76 ng/ml



#9 AR-1221-2

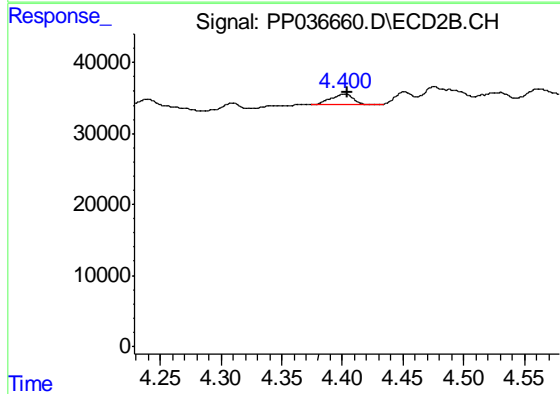
R.T.: 4.310 min
 Delta R.T.: -0.006 min
 Response: 8644
 Conc: 28.96 ng/ml



#10 AR-1221-3

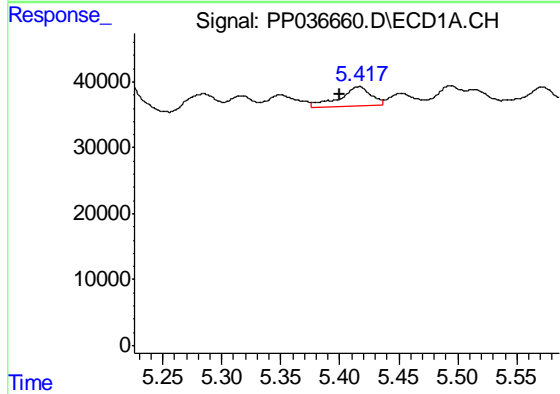
R.T.: 5.417 min
 Delta R.T.: 0.015 min
 Response: 53363
 Conc: 41.39 ng/ml

Instrument :
 ECD_P
 ClientSampleId :
 ETGI-305



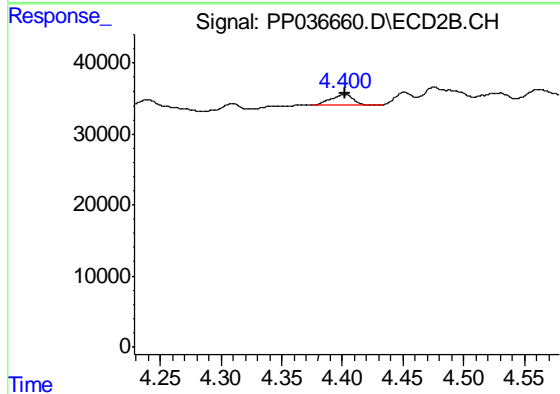
#10 AR-1221-3

R.T.: 4.401 min
 Delta R.T.: -0.003 min
 Response: 18113
 Conc: 20.06 ng/ml



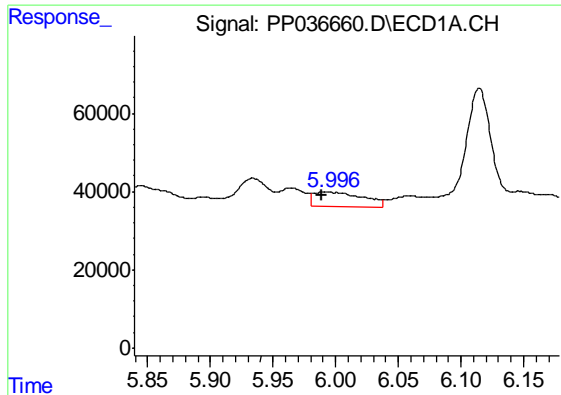
#11 AR-1232-1

R.T.: 5.417 min
 Delta R.T.: 0.017 min
 Response: 53363
 Conc: 50.10 ng/ml



#11 AR-1232-1

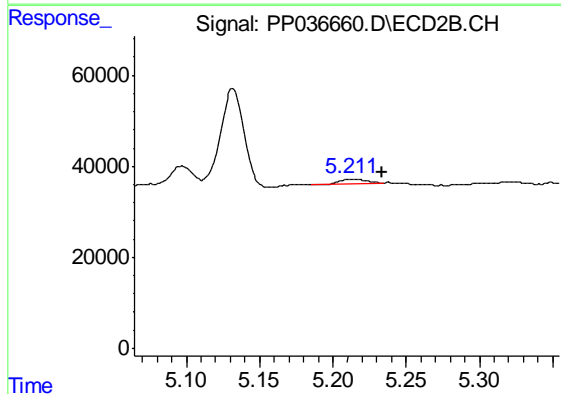
R.T.: 4.401 min
 Delta R.T.: -0.002 min
 Response: 18113
 Conc: 24.62 ng/ml



#12 AR-1232-2

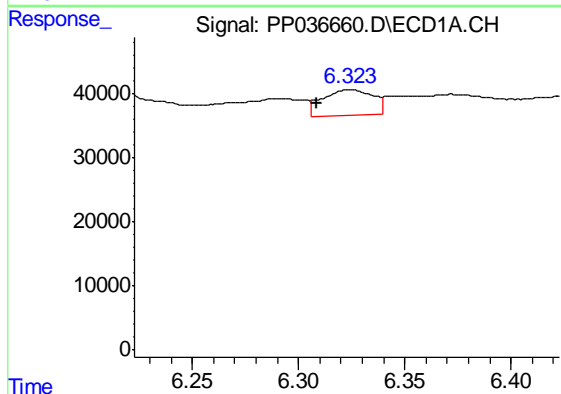
R.T.: 5.996 min
 Delta R.T.: 0.007 min
 Response: 100436
 Conc: 182.62 ng/ml

Instrument :
 ECD_P
 ClientSampleId :
 ETGI-305



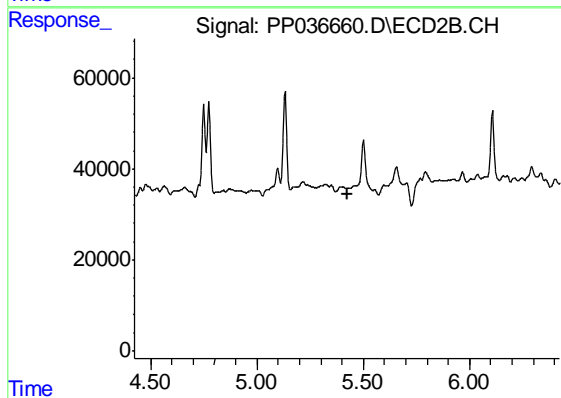
#12 AR-1232-2

R.T.: 5.212 min
 Delta R.T.: -0.022 min
 Response: 11787
 Conc: 17.63 ng/ml



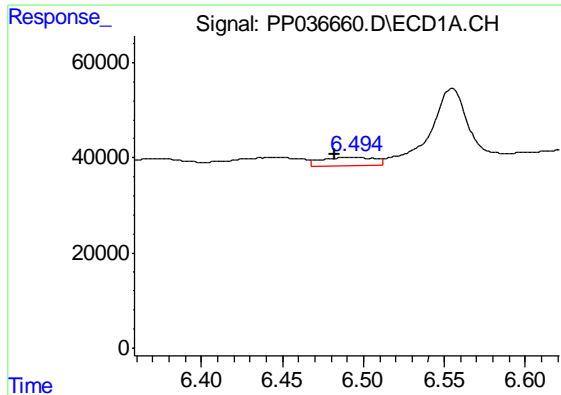
#13 AR-1232-3

R.T.: 6.323 min
 Delta R.T.: 0.015 min
 Response: 65562
 Conc: 64.18 ng/ml



#13 AR-1232-3

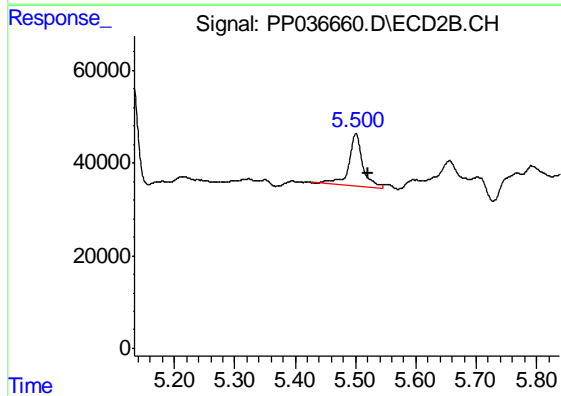
R.T.: 0.000 min
 Exp R.T. : 5.424 min
 Response: 0
 Conc: N.D.



#14 AR-1232-4

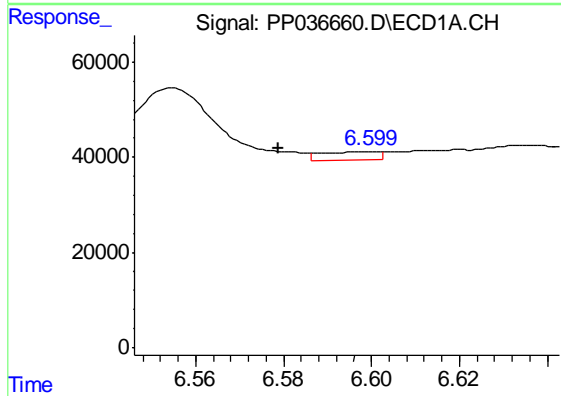
R.T.: 6.495 min
 Delta R.T.: 0.013 min
 Response: 40284
 Conc: 74.63 ng/ml

Instrument :
 ECD_P
 ClientSampleId :
 ETGI-305



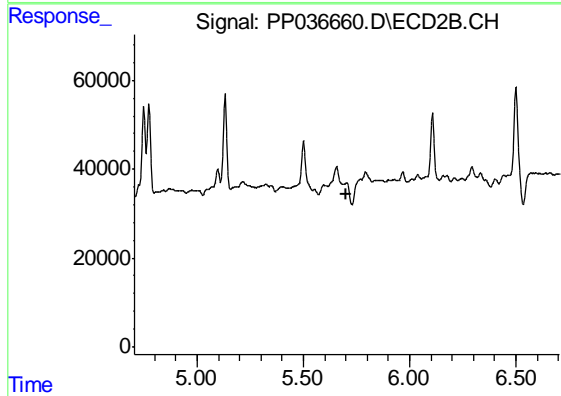
#14 AR-1232-4

R.T.: 5.501 min
 Delta R.T.: -0.021 min
 Response: 182344
 Conc: 582.30 ng/ml



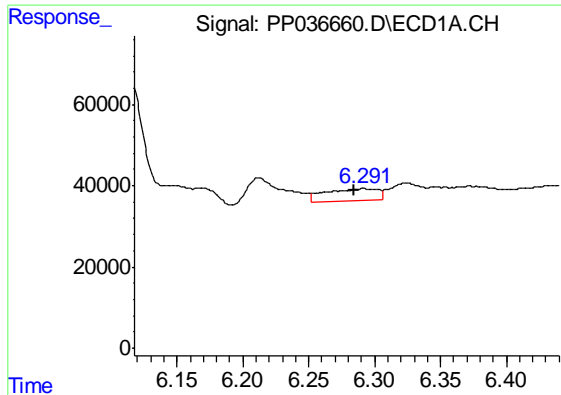
#15 AR-1232-5

R.T.: 6.600 min
 Delta R.T.: 0.021 min
 Response: 15566
 Conc: 42.47 ng/ml



#15 AR-1232-5

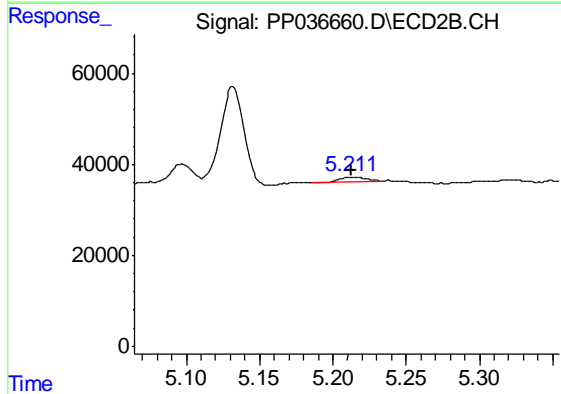
R.T.: 0.000 min
 Exp R.T. : 5.705 min
 Response: 0
 Conc: N.D.



#16 AR-1242-1

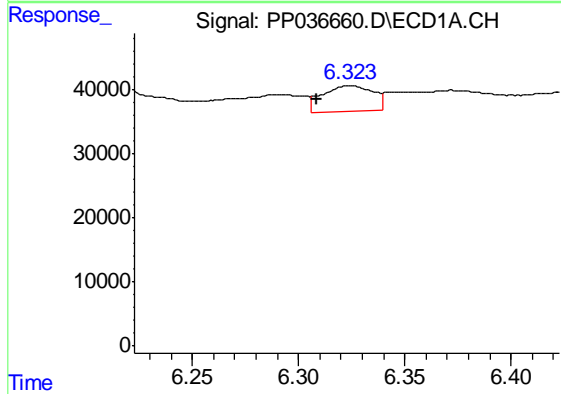
R.T.: 6.292 min
 Delta R.T.: 0.007 min
 Response: 83486
 Conc: 65.10 ng/ml

Instrument :
 ECD_P
 ClientSampleId :
 ETGI-305



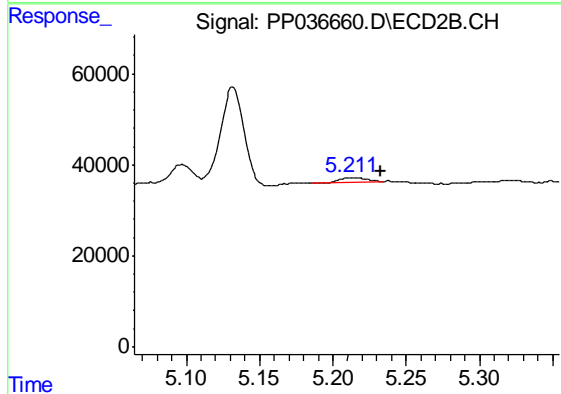
#16 AR-1242-1

R.T.: 5.212 min
 Delta R.T.: 0.000 min
 Response: 11787
 Conc: 13.24 ng/ml



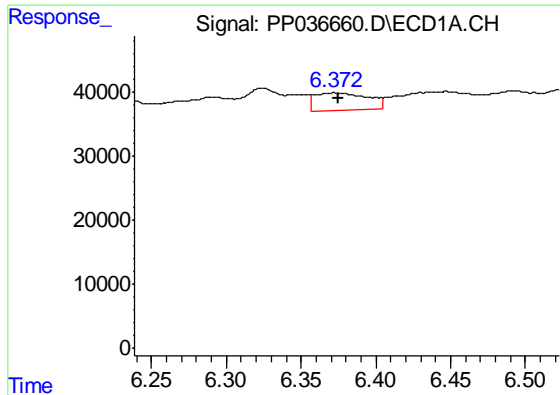
#17 AR-1242-2

R.T.: 6.323 min
 Delta R.T.: 0.015 min
 Response: 65562
 Conc: 35.93 ng/ml



#17 AR-1242-2

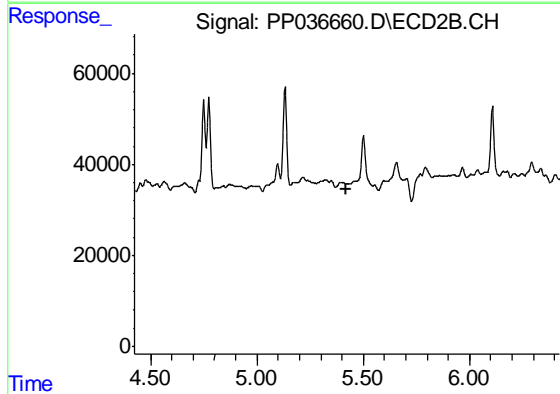
R.T.: 5.212 min
 Delta R.T.: -0.021 min
 Response: 11787
 Conc: 9.66 ng/ml



#18 AR-1242-3

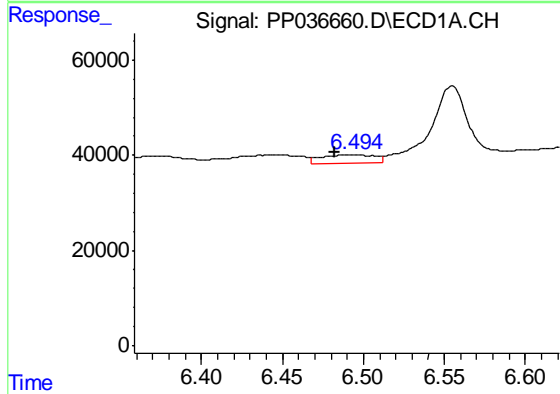
R.T.: 6.372 min
 Delta R.T.: -0.003 min
 Response: 65572
 Conc: 55.89 ng/ml

Instrument :
 ECD_P
 ClientSampleId :
 ETGI-305



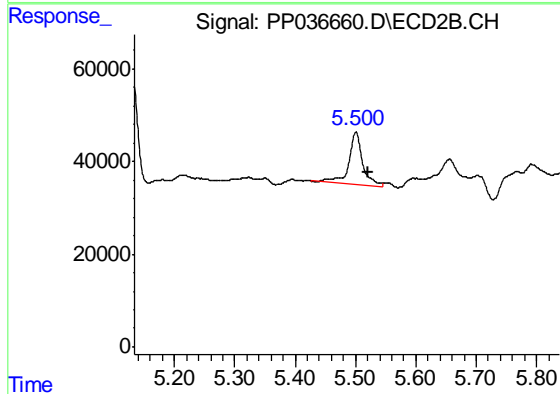
#18 AR-1242-3

R.T.: 0.000 min
 Exp R.T. : 5.423 min
 Response: 0
 Conc: N.D.



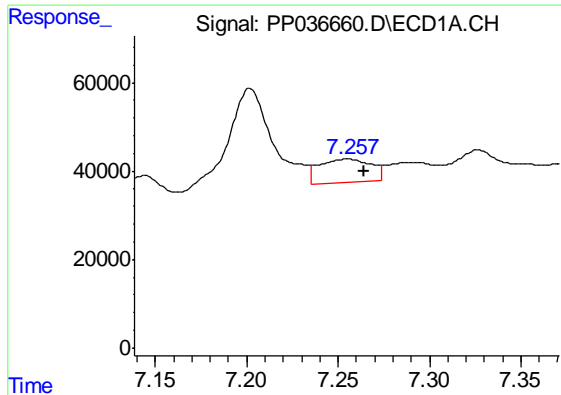
#19 AR-1242-4

R.T.: 6.495 min
 Delta R.T.: 0.013 min
 Response: 40284
 Conc: 41.63 ng/ml



#19 AR-1242-4

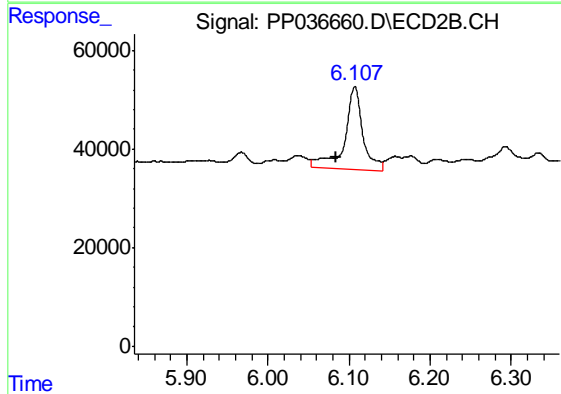
R.T.: 5.501 min
 Delta R.T.: -0.020 min
 Response: 182344
 Conc: 281.64 ng/ml



#20 AR-1242-5

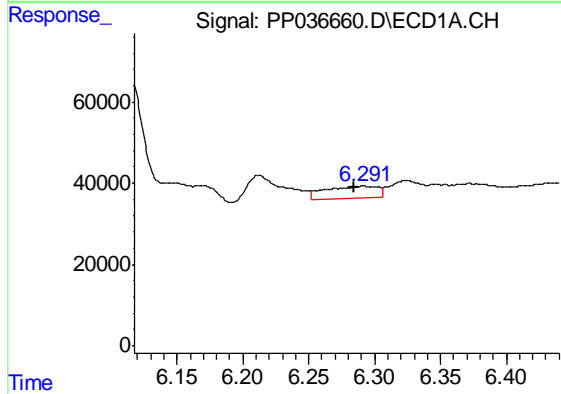
R.T.: 7.254 min
 Delta R.T.: -0.010 min
 Response: 106309
 Conc: 101.07 ng/ml

Instrument :
 ECD_P
 ClientSampled :
 ETGI-305



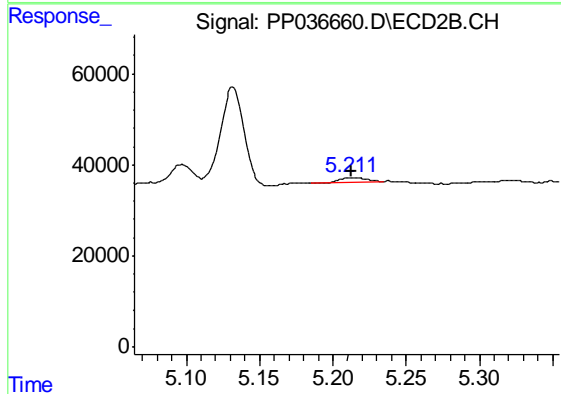
#20 AR-1242-5

R.T.: 6.107 min
 Delta R.T.: 0.023 min
 Response: 262030
 Conc: 321.15 ng/ml



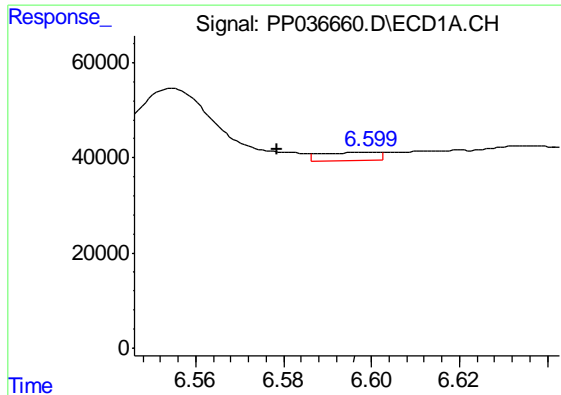
#21 AR-1248-1

R.T.: 6.292 min
 Delta R.T.: 0.007 min
 Response: 83486
 Conc: 82.76 ng/ml



#21 AR-1248-1

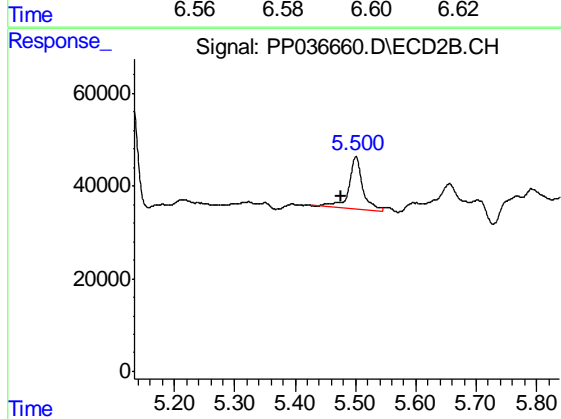
R.T.: 5.212 min
 Delta R.T.: 0.000 min
 Response: 11787
 Conc: 16.92 ng/ml



#22 AR-1248-2

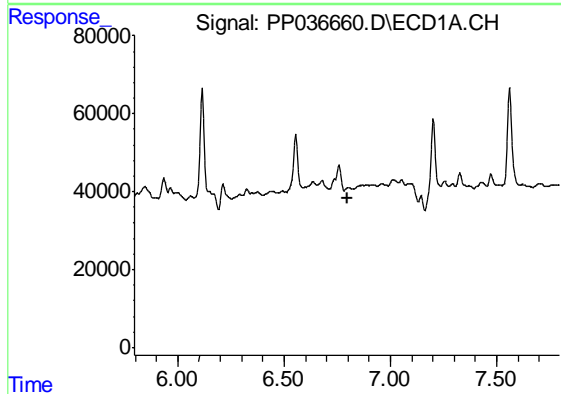
R.T.: 6.600 min
 Delta R.T.: 0.021 min
 Response: 15566
 Conc: 11.46 ng/ml

Instrument :
 ECD_P
 ClientSampleId :
 ETGI-305



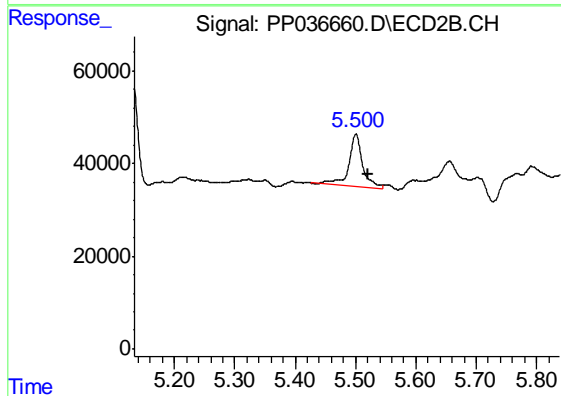
#22 AR-1248-2

R.T.: 5.501 min
 Delta R.T.: 0.025 min
 Response: 182344
 Conc: 192.51 ng/ml



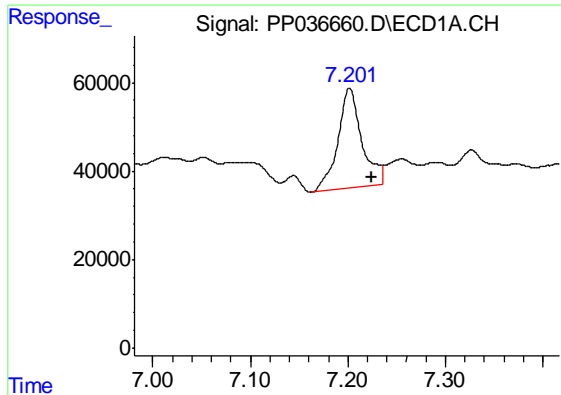
#23 AR-1248-3

R.T.: 6.803 min
 Delta R.T.: 0.007 min
 Response: -25612
 Conc: N.D.



#23 AR-1248-3

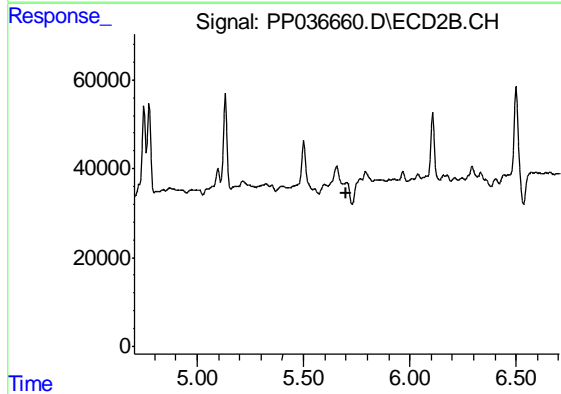
R.T.: 5.501 min
 Delta R.T.: -0.020 min
 Response: 182344
 Conc: 184.29 ng/ml



#24 AR-1248-4

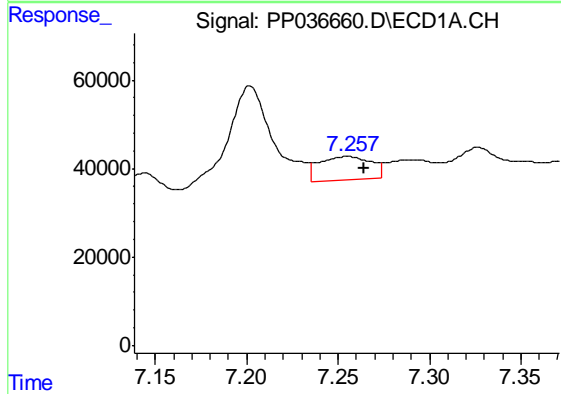
R.T.: 7.201 min
 Delta R.T.: -0.023 min
 Response: 388377
 Conc: 212.72 ng/ml

Instrument :
 ECD_P
 ClientSampled :
 ETGI-305



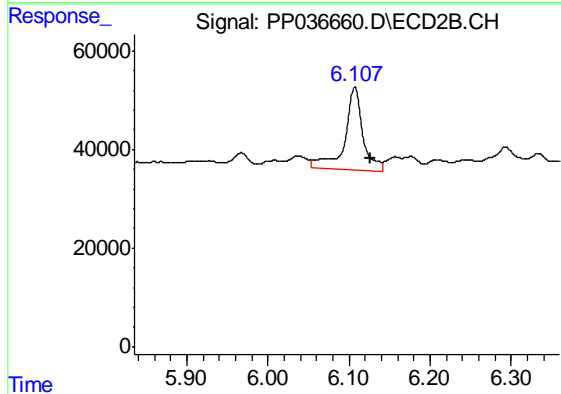
#24 AR-1248-4

R.T.: 0.000 min
 Exp R.T. : 5.704 min
 Response: 0
 Conc: N.D.



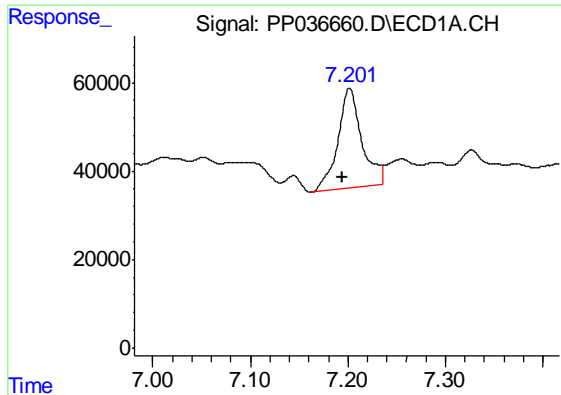
#25 AR-1248-5

R.T.: 7.254 min
 Delta R.T.: -0.010 min
 Response: 106309
 Conc: 58.96 ng/ml



#25 AR-1248-5

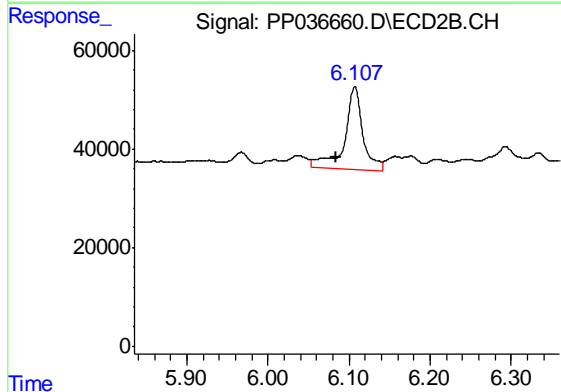
R.T.: 6.107 min
 Delta R.T.: -0.020 min
 Response: 262030
 Conc: 220.90 ng/ml



#26 AR-1254-1

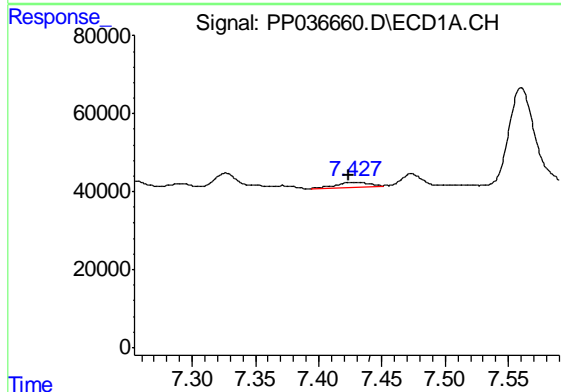
R.T.: 7.201 min
 Delta R.T.: 0.007 min
 Response: 388377
 Conc: 220.84 ng/ml

Instrument :
 ECD_P
 ClientSampleId :
 ETGI-305



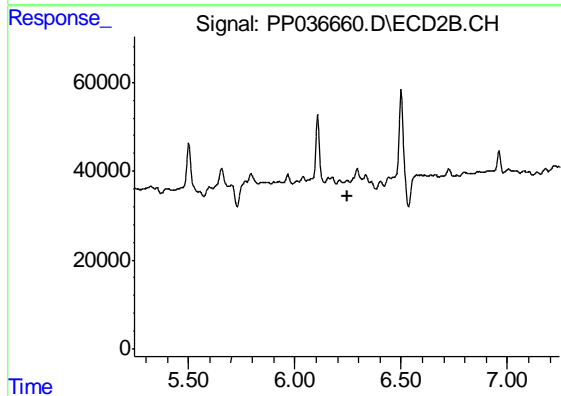
#26 AR-1254-1

R.T.: 6.107 min
 Delta R.T.: 0.023 min
 Response: 262030
 Conc: 154.65 ng/ml



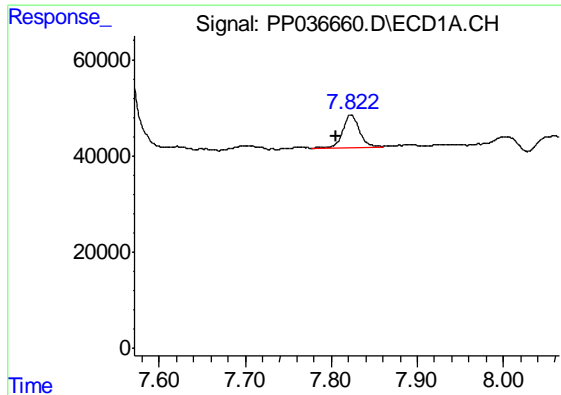
#27 AR-1254-2

R.T.: 7.428 min
 Delta R.T.: 0.004 min
 Response: 24805
 Conc: 9.17 ng/ml



#27 AR-1254-2

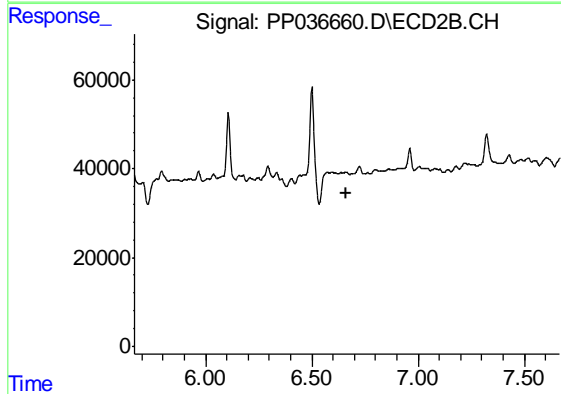
R.T.: 0.000 min
 Exp R.T. : 6.245 min
 Response: 0
 Conc: N.D.



#28 AR-1254-3

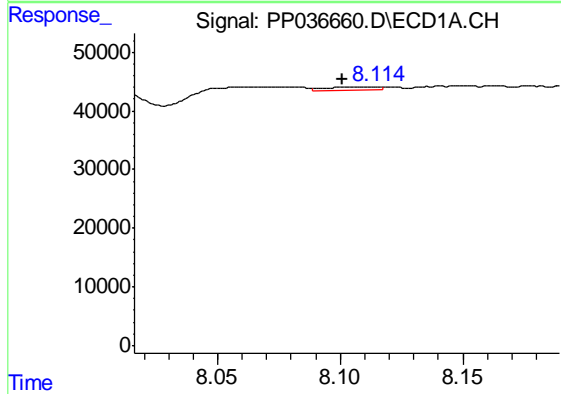
R.T.: 7.823 min
 Delta R.T.: 0.018 min
 Response: 90935
 Conc: 30.70 ng/ml

Instrument :
 ECD_P
 ClientSampleId :
 ETGI-305



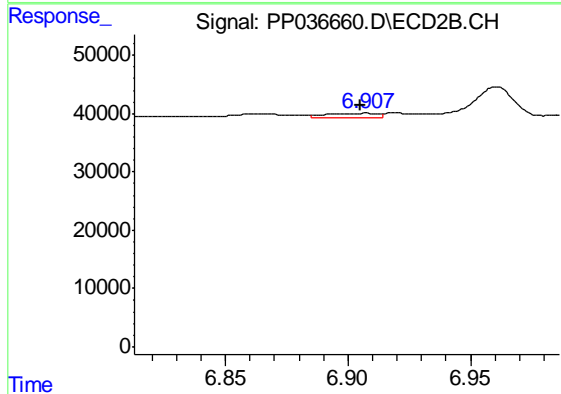
#28 AR-1254-3

R.T.: 0.000 min
 Exp R.T. : 6.665 min
 Response: 0
 Conc: N.D.



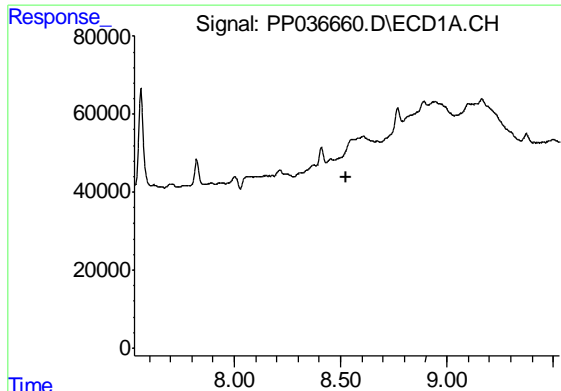
#29 AR-1254-4

R.T.: 8.115 min
 Delta R.T.: 0.013 min
 Response: 8588
 Conc: 3.91 ng/ml



#29 AR-1254-4

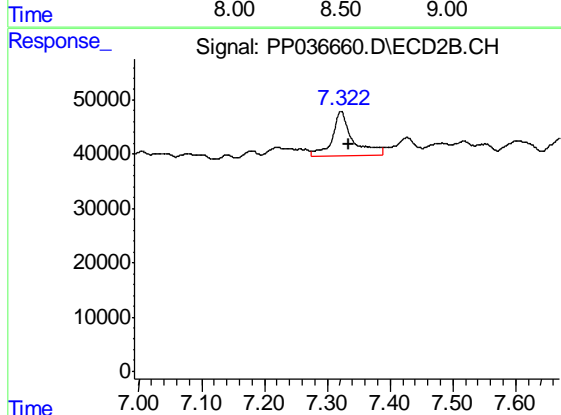
R.T.: 6.908 min
 Delta R.T.: 0.003 min
 Response: 10487
 Conc: 6.78 ng/ml



#30 AR-1254-5

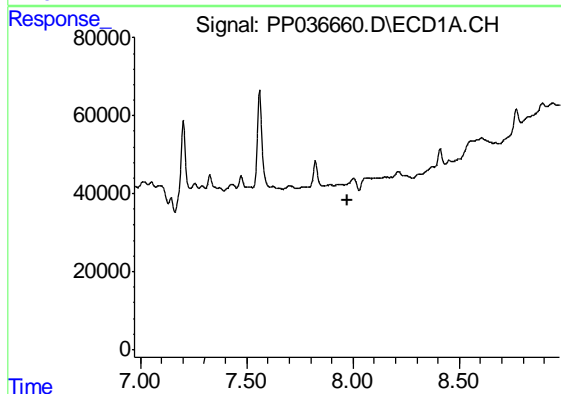
R.T.: 0.000 min
 Exp R.T. : 8.530 min
 Response: 0
 Conc: N.D.

Instrument :
 ECD_P
 ClientSampleId :
 ETGI-305



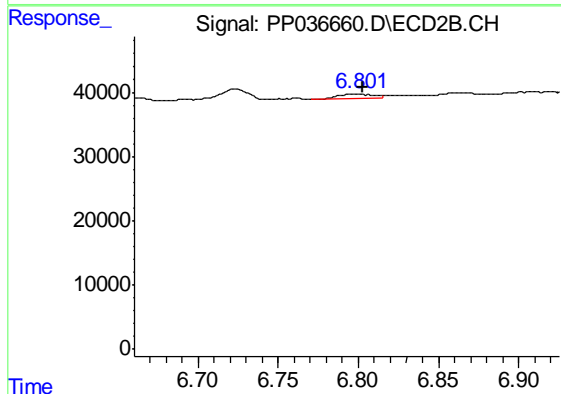
#30 AR-1254-5

R.T.: 7.322 min
 Delta R.T.: -0.014 min
 Response: 189983
 Conc: 88.35 ng/ml



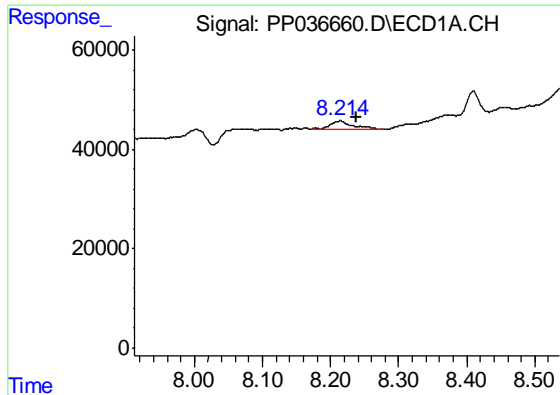
#31 AR-1260-1

R.T.: 0.000 min
 Exp R.T. : 7.972 min
 Response: 0
 Conc: N.D.



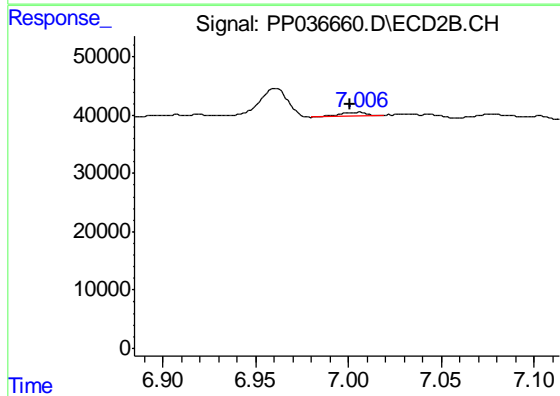
#31 AR-1260-1

R.T.: 6.800 min
 Delta R.T.: -0.003 min
 Response: 12292
 Conc: 7.63 ng/ml

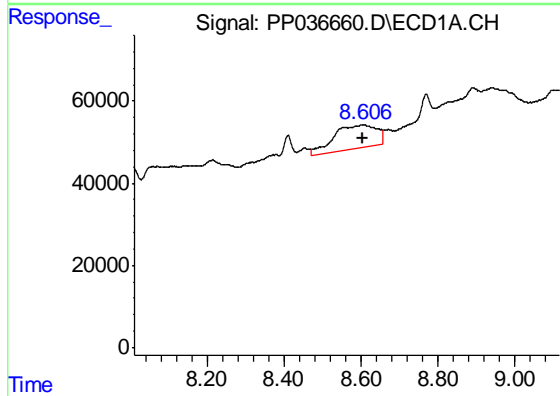


#32 AR-1260-2
 R.T.: 8.215 min
 Delta R.T.: -0.023 min
 Response: 39037
 Conc: 15.23 ng/ml

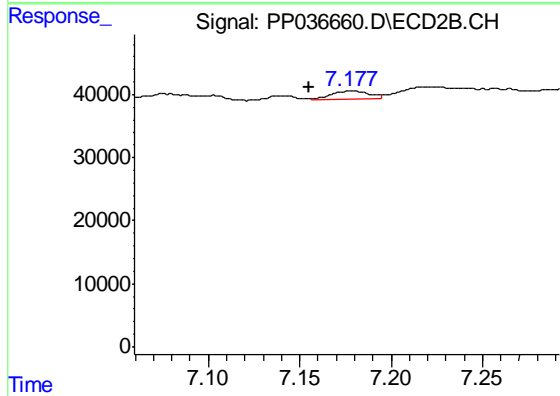
Instrument :
 ECD_P
 ClientSampleId :
 ETGI-305



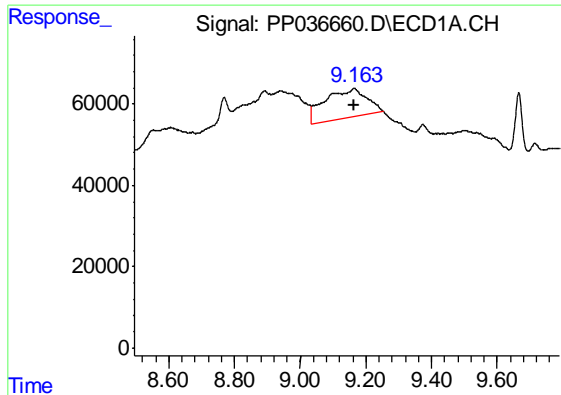
#32 AR-1260-2
 R.T.: 7.005 min
 Delta R.T.: 0.004 min
 Response: 7662
 Conc: 3.95 ng/ml



#33 AR-1260-3
 R.T.: 8.607 min
 Delta R.T.: 0.004 min
 Response: 435753
 Conc: 217.39 ng/ml



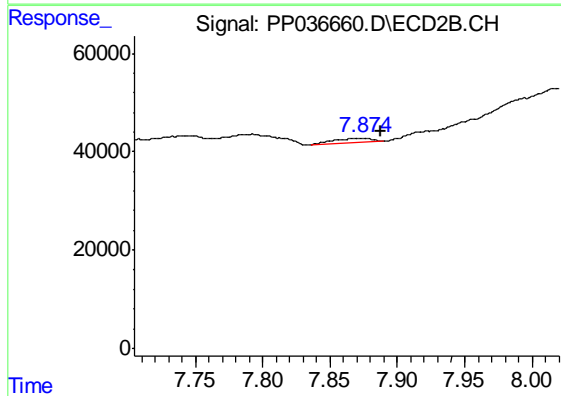
#33 AR-1260-3
 R.T.: 7.178 min
 Delta R.T.: 0.023 min
 Response: 18894
 Conc: 10.39 ng/ml



#35 AR-1260-5

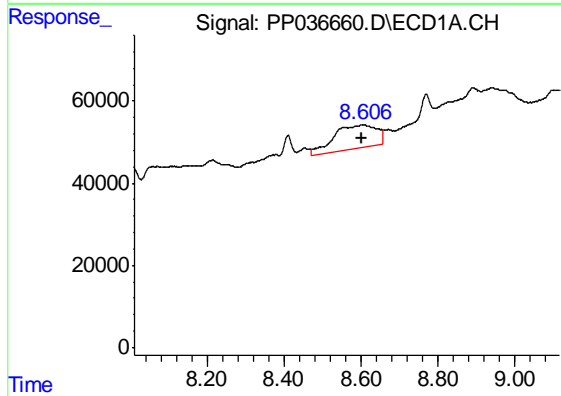
R.T.: 9.164 min
 Delta R.T.: 0.001 min
 Response: 617781
 Conc: 138.46 ng/ml

Instrument :
 ECD_P
 ClientSampleId :
 ETGI-305



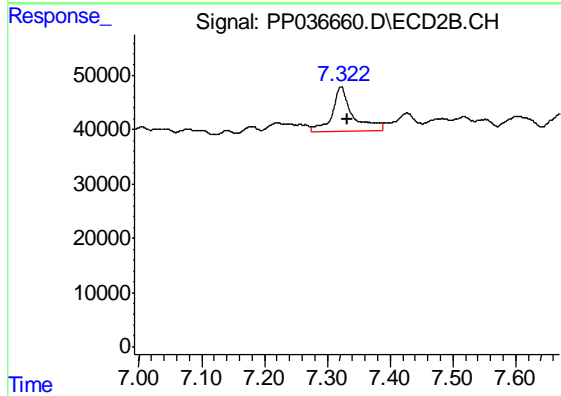
#35 AR-1260-5

R.T.: 7.875 min
 Delta R.T.: -0.012 min
 Response: 17196
 Conc: 4.68 ng/ml



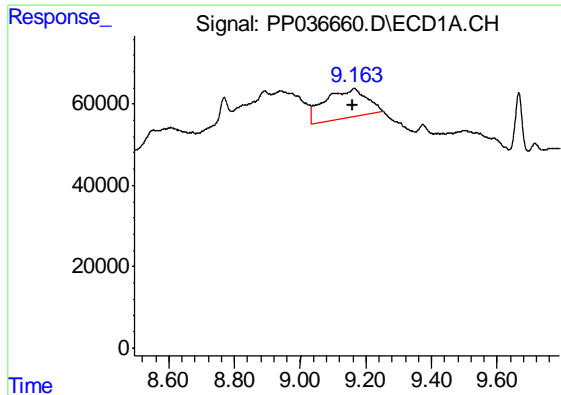
#36 AR-1262-1

R.T.: 8.607 min
 Delta R.T.: 0.004 min
 Response: 435753
 Conc: 152.93 ng/ml



#36 AR-1262-1

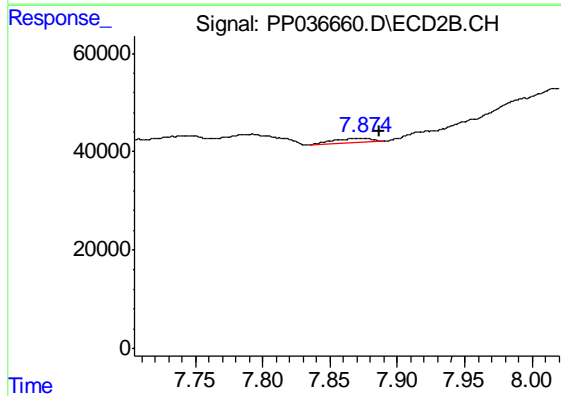
R.T.: 7.322 min
 Delta R.T.: -0.011 min
 Response: 189983
 Conc: 159.40 ng/ml



#37 AR-1262-2

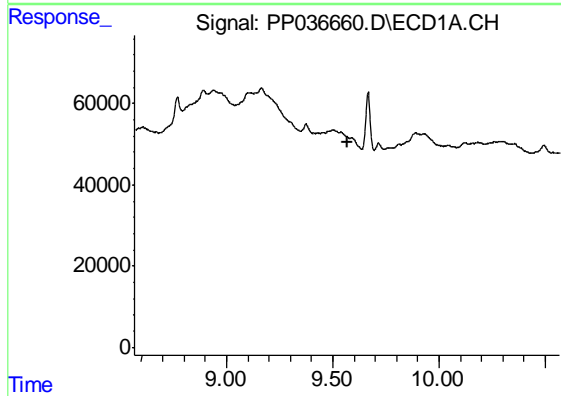
R.T.: 9.164 min
 Delta R.T.: 0.002 min
 Response: 617781
 Conc: 121.59 ng/ml

Instrument :
 ECD_P
 ClientSampleId :
 ETGI-305



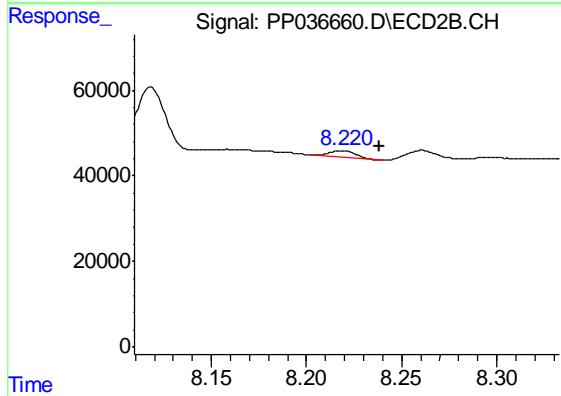
#37 AR-1262-2

R.T.: 7.875 min
 Delta R.T.: -0.011 min
 Response: 17196
 Conc: 4.39 ng/ml



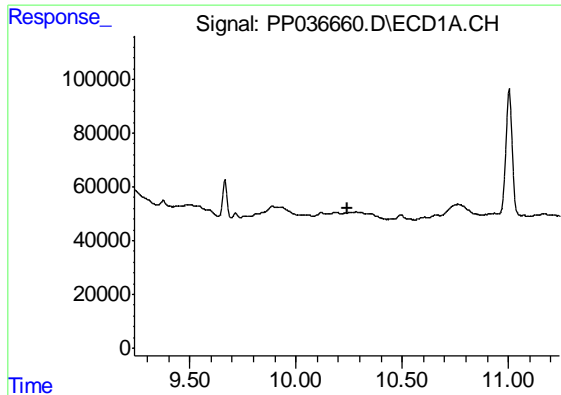
#39 AR-1262-4

R.T.: 0.000 min
 Exp R.T. : 9.567 min
 Response: 0
 Conc: N.D.



#39 AR-1262-4

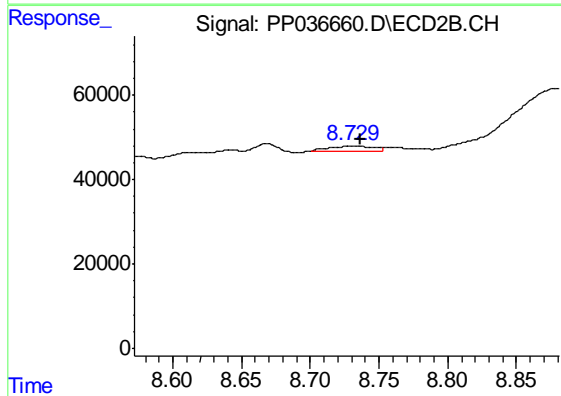
R.T.: 8.219 min
 Delta R.T.: -0.019 min
 Response: 16292
 Conc: 5.47 ng/ml



#40 AR-1262-5

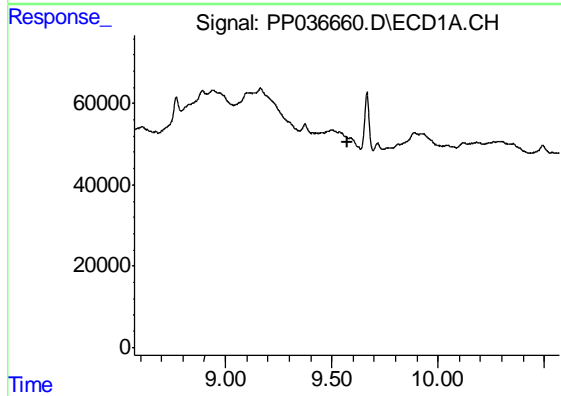
R.T.: 0.000 min
 Exp R.T. : 10.240 min
 Response: 0
 Conc: N.D.

Instrument :
 ECD_P
 ClientSampled :
 ETGI-305



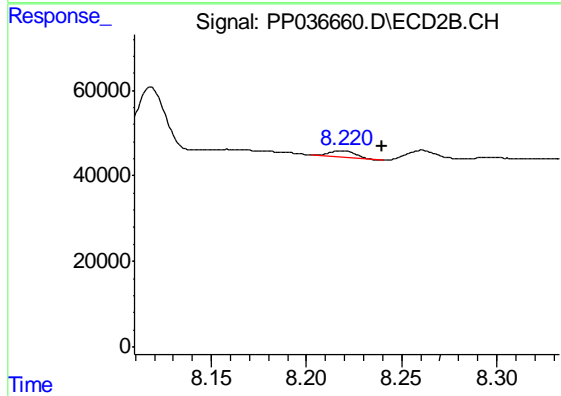
#40 AR-1262-5

R.T.: 8.729 min
 Delta R.T.: -0.008 min
 Response: 24730
 Conc: 17.35 ng/ml



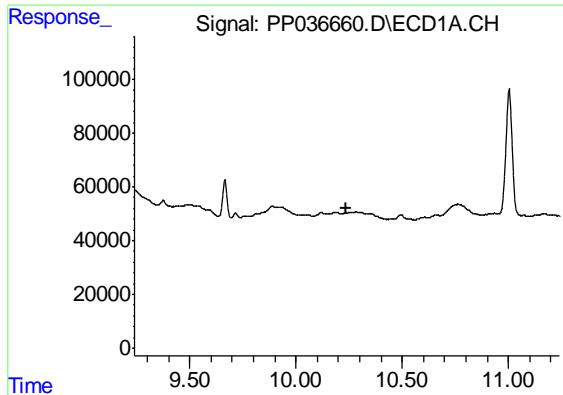
#42 AR-1268-2

R.T.: 0.000 min
 Exp R.T. : 9.572 min
 Response: 0
 Conc: N.D.



#42 AR-1268-2

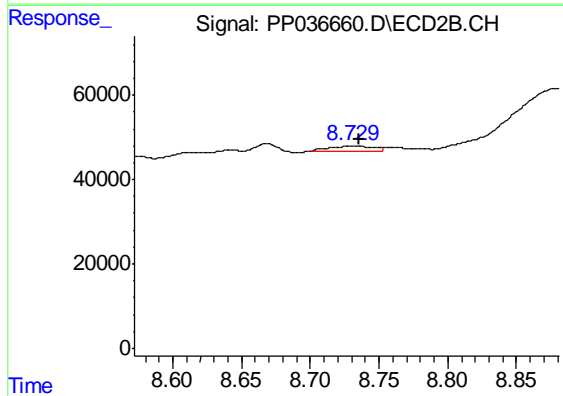
R.T.: 8.219 min
 Delta R.T.: -0.021 min
 Response: 16292
 Conc: 3.78 ng/ml



#44 AR-1268-4

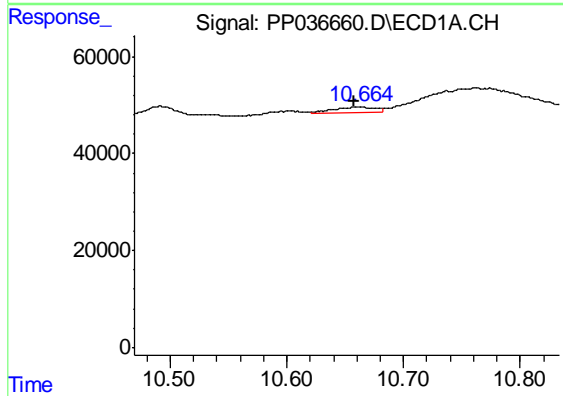
R.T.: 0.000 min
 Exp R.T. : 10.240 min
 Response: 0
 Conc: N.D.

Instrument :
 ECD_P
 ClientSampled :
 ETGI-305



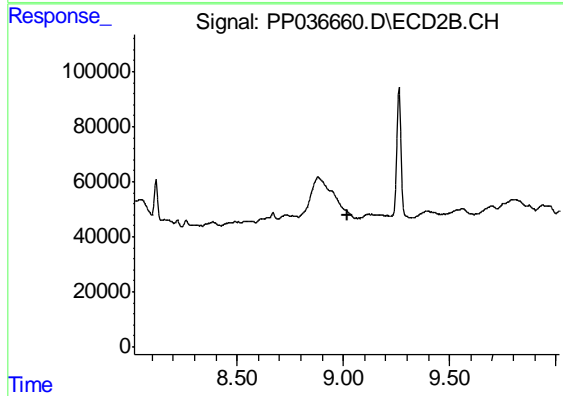
#44 AR-1268-4

R.T.: 8.729 min
 Delta R.T.: -0.007 min
 Response: 24730
 Conc: 15.55 ng/ml



#45 AR-1268-5

R.T.: 10.664 min
 Delta R.T.: 0.007 min
 Response: 30700
 Conc: 2.00 ng/ml



#45 AR-1268-5

R.T.: 0.000 min
 Exp R.T. : 9.017 min
 Response: 0
 Conc: N.D.