

Data Path : Z:\pestpcbsrv\HPCHEM1\ECD_P\Data\PP062123\
 Data File : PP058587.D
 Signal(s) : Signal #1: ECD1A.ch Signal #2: ECD2B.ch
 Acq On : 21 Jun 2023 10:34
 Operator : YP\AJ
 Sample : I.BLK
 Misc :
 ALS Vial : 2 Sample Multiplier: 1

Instrument :
 ECD_P
 ClientSampleId :

Integration File signal 1: autoint1.e
 Integration File signal 2: autoint2.e
 Quant Time: Jun 21 21:24:17 2023
 Quant Method : Z:\pestpcbsrv\HPCHEM1\ECD_P\methods\PP062023.M
 Quant Title : GC EXTRACTABLES
 QLast Update : Wed Jun 21 05:48:37 2023
 Response via : Initial Calibration
 Integrator: ChemStation

Volume Inj. : 2 µl
 Signal #1 Phase : ZB-MR1 Signal #2 Phase: ZB-MR2
 Signal #1 Info : 30Mx0.32mmx 0.50µ Signal #2 Info : 30M x 0.32mm x 0.25µm

Compound	RT#1	RT#2	Resp#1	Resp#2	ng/ml	ng/ml
System Monitoring Compounds						
1) SA Tetrachlo...	4.458	3.670	50895170	33905643	20.381	20.788
2) SA Decachlor...	10.275	8.726	27399672	26804096	20.716	22.006
Target Compounds						
3) L1 AR-1016-1	5.626	4.759	109765	28841	1.538	0.573 #
4) L1 AR-1016-2	5.661	4.790	81964	28332	0.795	0.400 #
5) L1 AR-1016-3	5.714	4.959	191340	32572	2.983	0.865 #
6) L1 AR-1016-4	5.829	5.020	17733	100604	0.346	3.025 #
7) L1 AR-1016-5	6.129	5.230	76514	39587	1.449	0.973 #
8) L2 AR-1221-1	4.660	3.905f	111946	26164	3.830	1.276 #
9) L2 AR-1221-2	4.766	3.972	763992	457388	34.940	29.077
10) L2 AR-1221-3	4.836	4.025f	101868	21170	1.586	0.445 #
11) L3 AR-1232-1	4.836	4.025f	101868	21170	2.192	0.617 #
12) L3 AR-1232-2	5.369	4.790	18765	28332	0.700	0.875 #
13) L3 AR-1232-3	5.661	4.959	81964	32572	1.788	1.874
14) L3 AR-1232-4	5.829	5.064	17733	56830	0.764	3.380 #
15) L3 AR-1232-5	5.916	5.230	122945	39587	6.289	2.141 #
16) L4 AR-1242-1	5.626	4.759	109765	28841	1.962	0.727 #
17) L4 AR-1242-2	5.661	4.790	81964	28332	1.021	0.510 #
18) L4 AR-1242-3	5.714	4.959	191340	32572	3.780	1.108 #
19) L4 AR-1242-4	5.829	5.064	17733	56830	0.444	1.757 #
20) L4 AR-1242-5	6.559	5.556f	16603	194310	0.457	5.123 #
21) L5 AR-1248-1	5.626	4.759	109765	28841	2.585	0.944 #
22) L5 AR-1248-2	5.916	5.020	122945	100604	1.907	2.199
23) L5 AR-1248-3	6.129	5.064	76514	56830	1.086	1.198
24) L5 AR-1248-4	6.520	5.230	38793	39587	0.568	0.723 #
25) L5 AR-1248-5	6.559	5.602f	16603	325105	0.259	6.624 #
26) L6 AR-1254-1	6.492	5.556f	517921	194310	6.755	2.519 #
27) L6 AR-1254-2	6.707	5.726	93644	168245	0.846	2.457 #
28) L6 AR-1254-3	7.080	6.127	327278	124055	3.051	1.182 #
30) L6 AR-1254-5	7.781	6.777	18511	20178	0.229	0.218
31) L7 AR-1260-1	7.250	6.265	10410	52491	0.119	0.679 #
32) L7 AR-1260-2	7.506	6.456	55357	19827	0.573	0.224 #
33) L7 AR-1260-3	7.876	6.621	143691	74964	2.351	0.889 #
34) L7 AR-1260-4	8.106f	7.071	149992	18432	2.023	0.306 #
35) L7 AR-1260-5	8.430f	7.340f	112285	82512	0.862	0.645 #
36) L8 AR-1262-1	7.876	6.857f	143691	120701	1.397	2.841 #
37) L8 AR-1262-2	8.430f	7.071	112285	18432	0.668	0.204 #
38) L8 AR-1262-3	8.732	7.600	32805	43685	0.288	0.641 #
39) L8 AR-1262-4	8.837	7.654f	52426	81699	0.609	0.669
40) L8 AR-1262-5	9.481f	8.176	51886	74664	0.946	1.412 #
41) L9 AR-1268-1	8.732	7.600	32805	43685	0.167	0.237 #
42) L9 AR-1268-2	8.837	7.654f	52426	81699	0.303	0.495 #

Data Path : Z:\pestpcbsrv\HPCHEM1\ECD_P\Data\PP062123\
 Data File : PP058587.D
 Signal(s) : Signal #1: ECD1A.ch Signal #2: ECD2B.ch
 Acq On : 21 Jun 2023 10:34
 Operator : YP\AJ
 Sample : I.BLK
 Misc :
 ALS Vial : 2 Sample Multiplier: 1

Instrument :
 ECD_P
 ClientSampleId :

Integration File signal 1: autoint1.e
 Integration File signal 2: autoint2.e
 Quant Time: Jun 21 21:24:17 2023
 Quant Method : Z:\pestpcbsrv\HPCHEM1\ECD_P\methods\PP062023.M
 Quant Title : GC EXTRACTABLES
 QLast Update : Wed Jun 21 05:48:37 2023
 Response via : Initial Calibration
 Integrator: ChemStation

Volume Inj. : 2 µl
 Signal #1 Phase : ZB-MR1 Signal #2 Phase: ZB-MR2
 Signal #1 Info : 30Mx0.32mmx 0.50µ Signal #2 Info : 30M x 0.32mm x 0.25µm

	Compound	RT#1	RT#2	Resp#1	Resp#2	ng/ml	ng/ml
43)	L9 AR-1268-3	9.052	7.892	59883	85032	0.386	0.587 #
44)	L9 AR-1268-4	9.481f	8.176	51886	74664	0.907	1.372 #
45)	L9 AR-1268-5	9.920	8.467	105533	170924	0.226	0.410 #

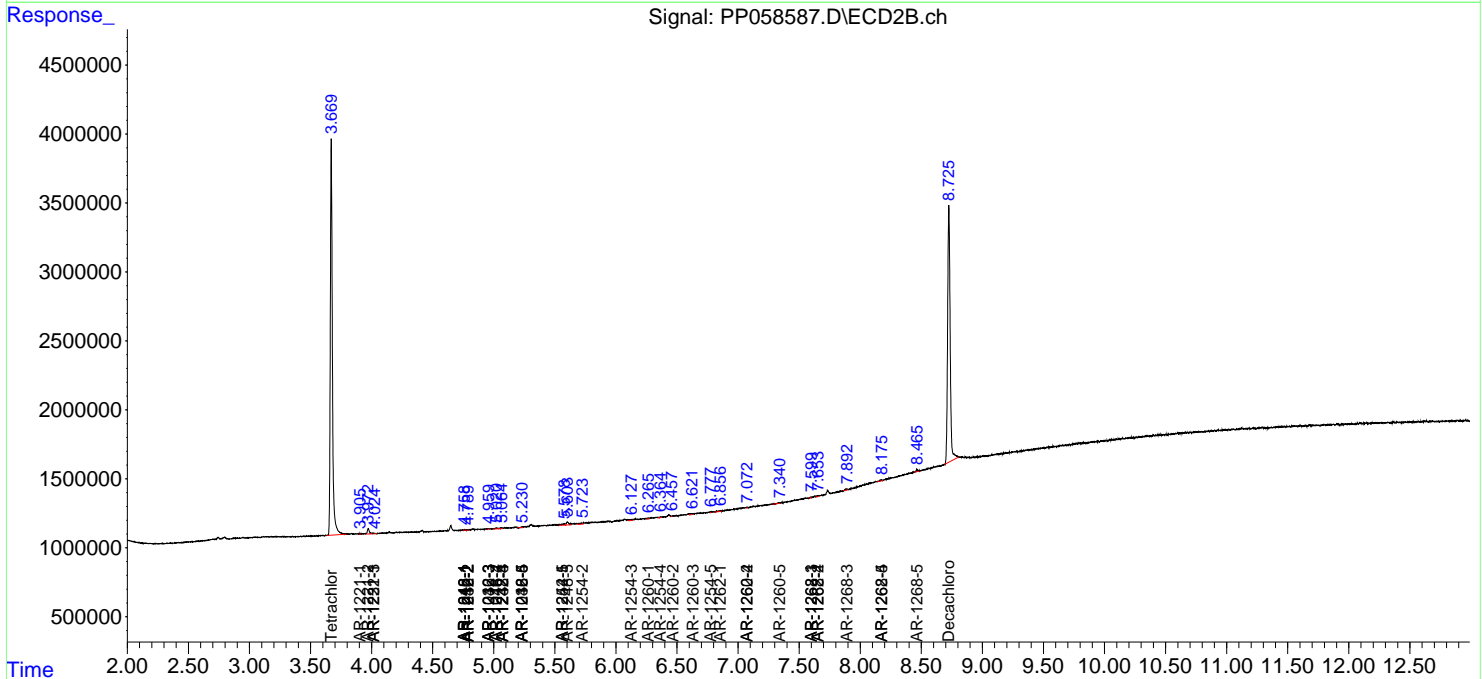
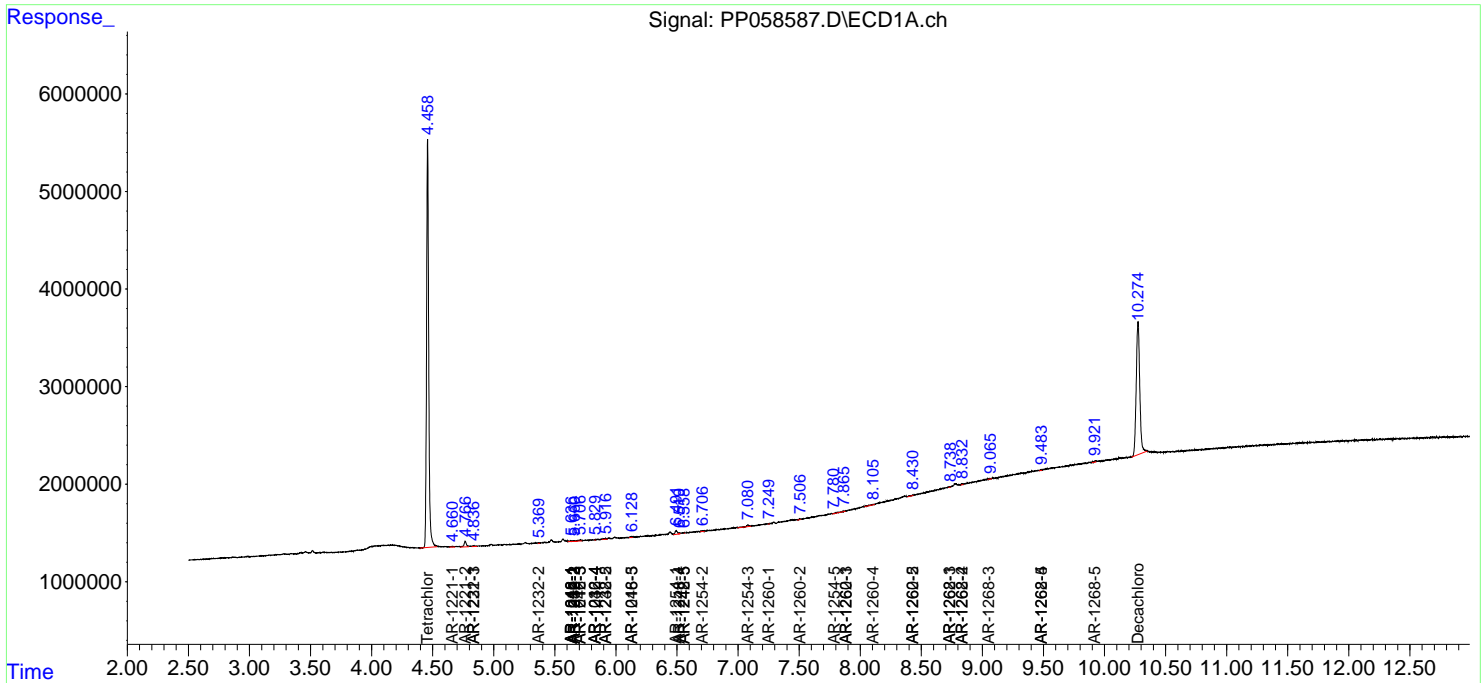
(f)=RT Delta > 1/2 Window (#)=Amounts differ by > 25% (m)=manual int.

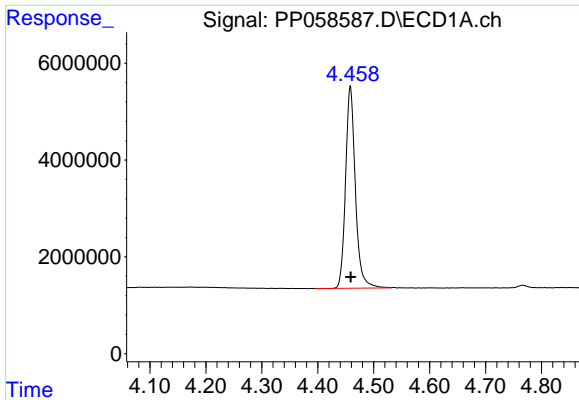
Data Path : Z:\pestpcbsrv\HPCHEM1\ECD_P\Data\PP062123\
 Data File : PP058587.D
 Signal(s) : Signal #1: ECD1A.ch Signal #2: ECD2B.ch
 Acq On : 21 Jun 2023 10:34
 Operator : YP\AJ
 Sample : I.BLK
 Misc :
 ALS Vial : 2 Sample Multiplier: 1

Instrument :
 ECD_P
 ClientSampleId :

Integration File signal 1: autoint1.e
 Integration File signal 2: autoint2.e
 Quant Time: Jun 21 21:24:17 2023
 Quant Method : Z:\pestpcbsrv\HPCHEM1\ECD_P\methods\PP062023.M
 Quant Title : GC EXTRACTABLES
 QLast Update : Wed Jun 21 05:48:37 2023
 Response via : Initial Calibration
 Integrator: ChemStation

Volume Inj. : 2 µl
 Signal #1 Phase : ZB-MR1 Signal #2 Phase: ZB-MR2
 Signal #1 Info : 30Mx0.32mmx 0.50µ Signal #2 Info : 30M x 0.32mm x 0.25µm

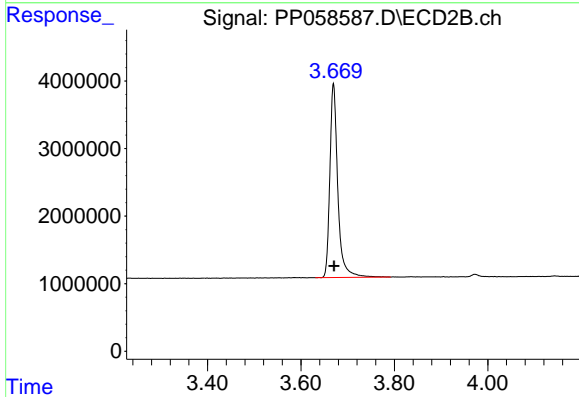




#1 Tetrachloro-m-xylene

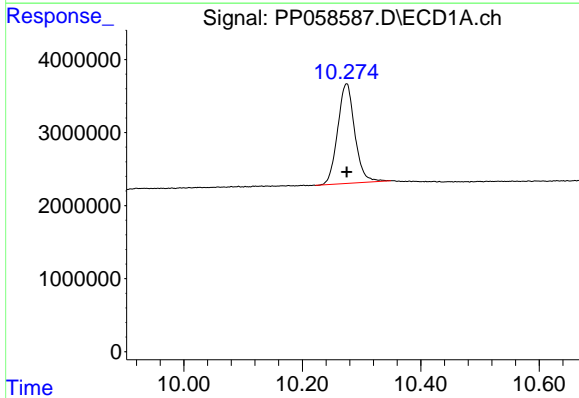
R.T.: 4.458 min
 Delta R.T.: 0.000 min
 Response: 50895170
 Conc: 20.38 ng/ml

Instrument :
 ECD_P
 ClientSampleId :



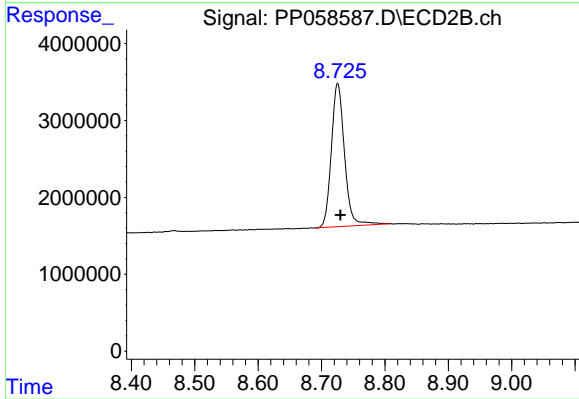
#1 Tetrachloro-m-xylene

R.T.: 3.670 min
 Delta R.T.: -0.001 min
 Response: 33905643
 Conc: 20.79 ng/ml



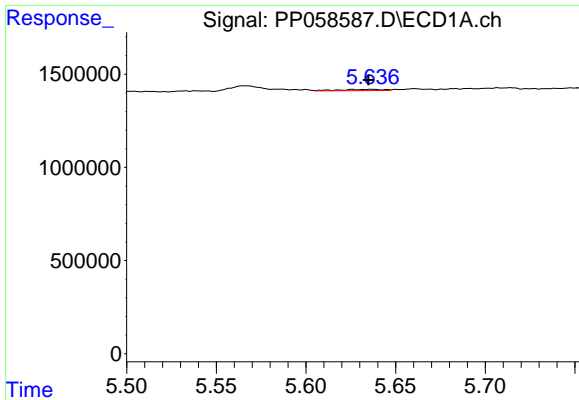
#2 Decachlorobiphenyl

R.T.: 10.275 min
 Delta R.T.: 0.000 min
 Response: 27399672
 Conc: 20.72 ng/ml



#2 Decachlorobiphenyl

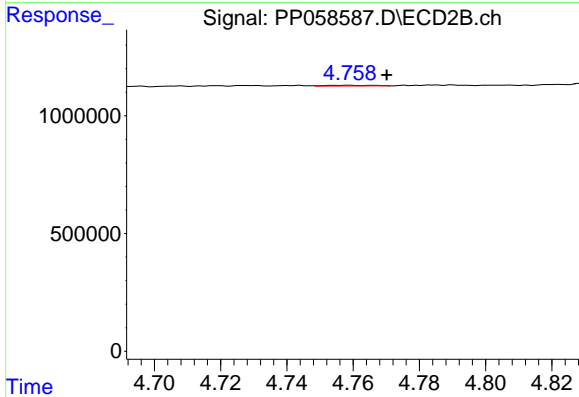
R.T.: 8.726 min
 Delta R.T.: -0.004 min
 Response: 26804096
 Conc: 22.01 ng/ml



#3 AR-1016-1

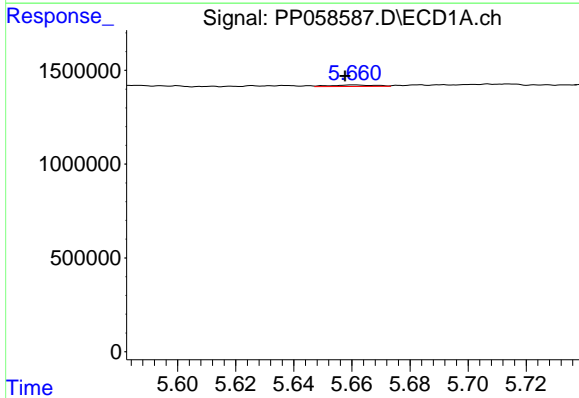
R.T.: 5.626 min
 Delta R.T.: -0.009 min
 Response: 109765
 Conc: 1.54 ng/ml

Instrument :
 ECD_P
 ClientSampleId :



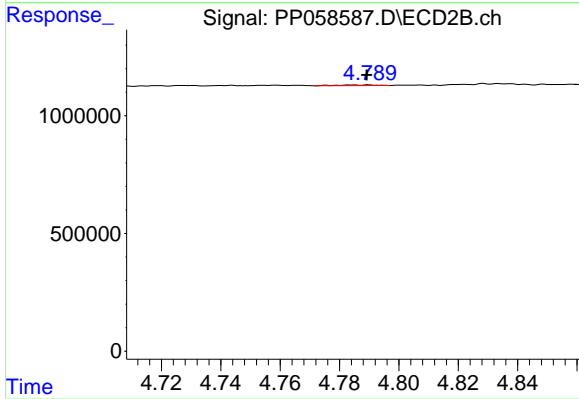
#3 AR-1016-1

R.T.: 4.759 min
 Delta R.T.: -0.012 min
 Response: 28841
 Conc: 0.57 ng/ml



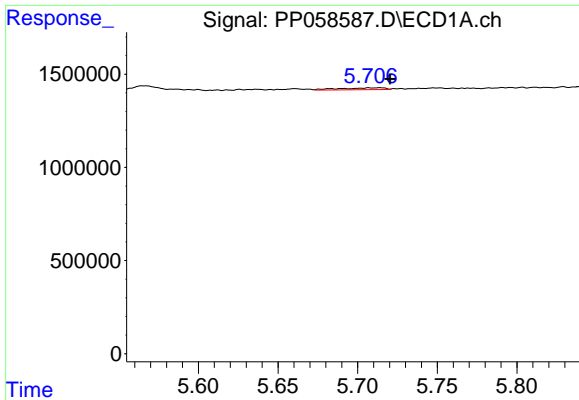
#4 AR-1016-2

R.T.: 5.661 min
 Delta R.T.: 0.003 min
 Response: 81964
 Conc: 0.79 ng/ml



#4 AR-1016-2

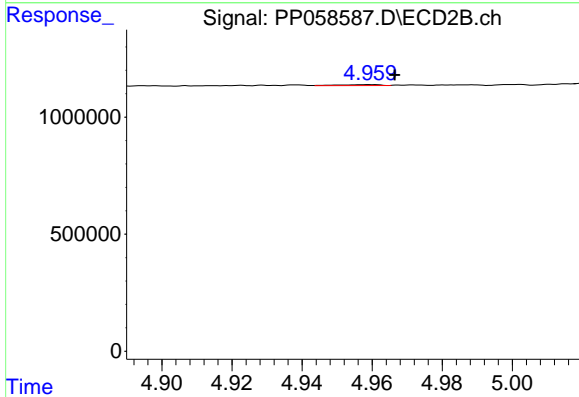
R.T.: 4.790 min
 Delta R.T.: 0.000 min
 Response: 28332
 Conc: 0.40 ng/ml



#5 AR-1016-3

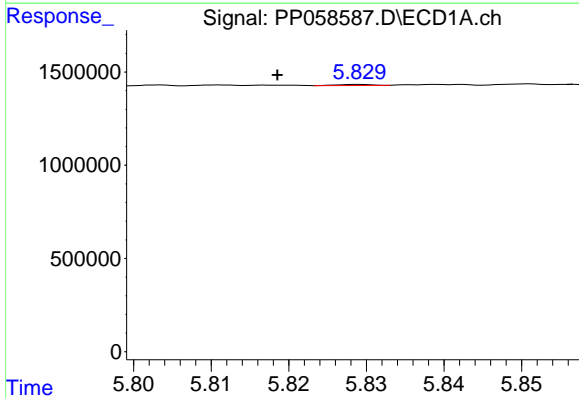
R.T.: 5.714 min
 Delta R.T.: -0.006 min
 Response: 191340
 Conc: 2.98 ng/ml

Instrument :
 ECD_P
 ClientSampleId :



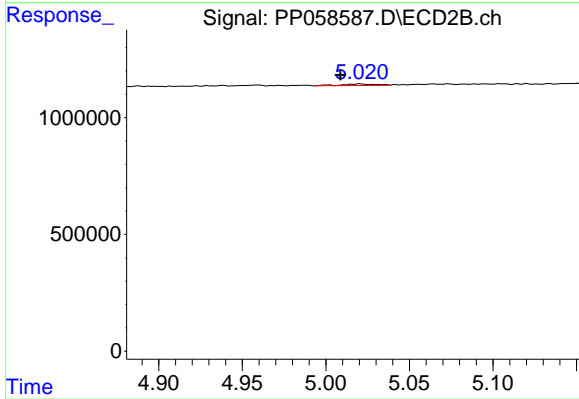
#5 AR-1016-3

R.T.: 4.959 min
 Delta R.T.: -0.007 min
 Response: 32572
 Conc: 0.86 ng/ml



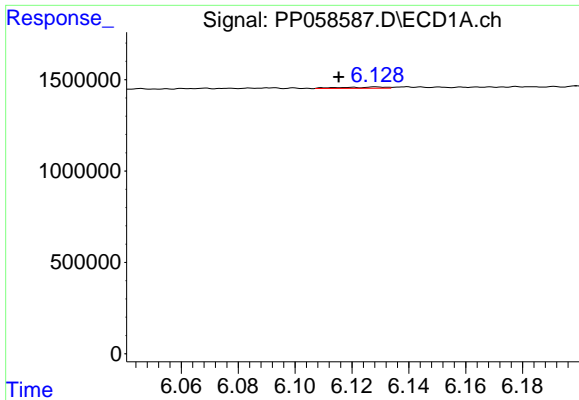
#6 AR-1016-4

R.T.: 5.829 min
 Delta R.T.: 0.010 min
 Response: 17733
 Conc: 0.35 ng/ml



#6 AR-1016-4

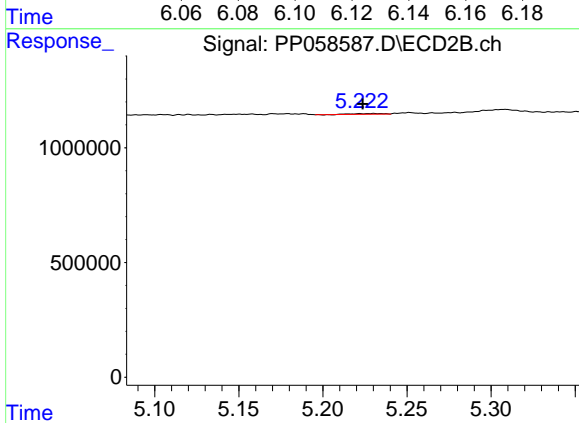
R.T.: 5.020 min
 Delta R.T.: 0.012 min
 Response: 100604
 Conc: 3.02 ng/ml



#7 AR-1016-5

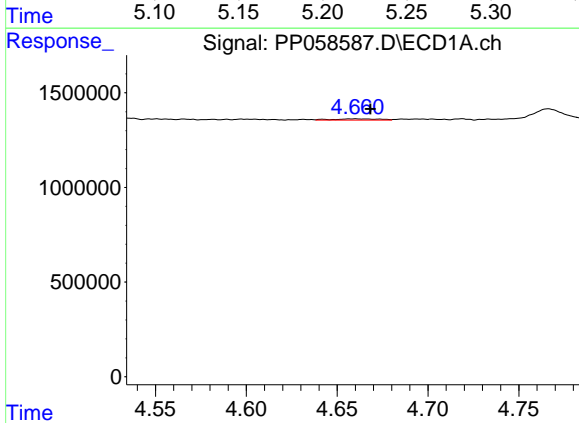
R.T.: 6.129 min
 Delta R.T.: 0.013 min
 Response: 76514
 Conc: 1.45 ng/ml

Instrument :
 ECD_P
 ClientSampleId :



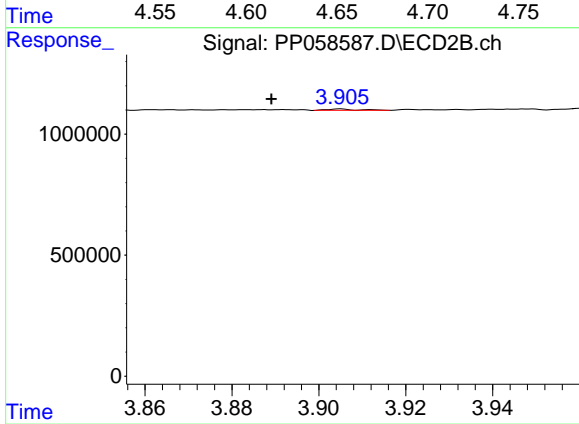
#7 AR-1016-5

R.T.: 5.230 min
 Delta R.T.: 0.006 min
 Response: 39587
 Conc: 0.97 ng/ml



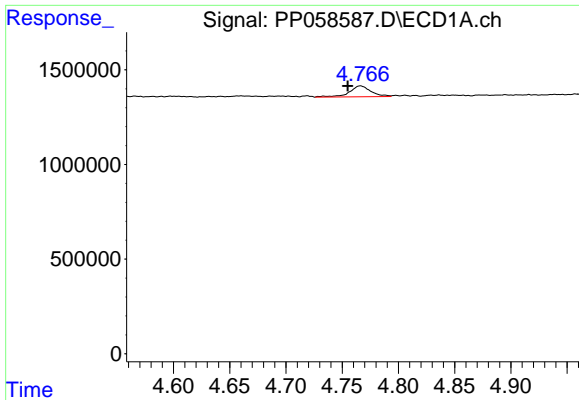
#8 AR-1221-1

R.T.: 4.660 min
 Delta R.T.: -0.009 min
 Response: 111946
 Conc: 3.83 ng/ml



#8 AR-1221-1

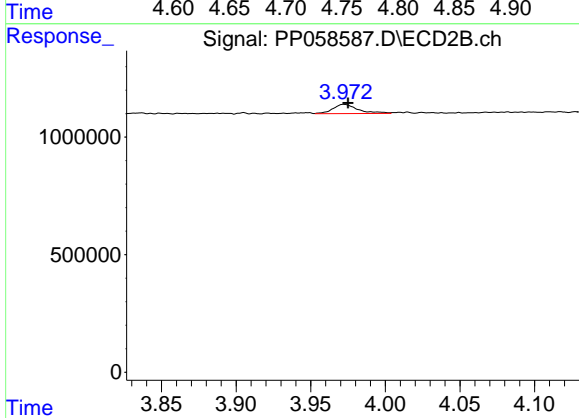
R.T.: 3.905 min
 Delta R.T.: 0.016 min
 Response: 26164
 Conc: 1.28 ng/ml



#9 AR-1221-2

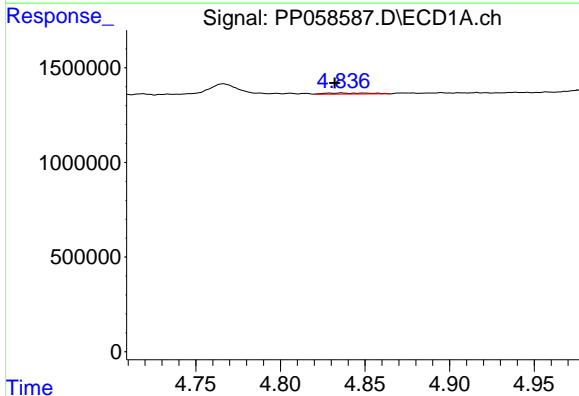
R.T.: 4.766 min
 Delta R.T.: 0.011 min
 Response: 763992
 Conc: 34.94 ng/ml

Instrument :
 ECD_P
 ClientSampleId :



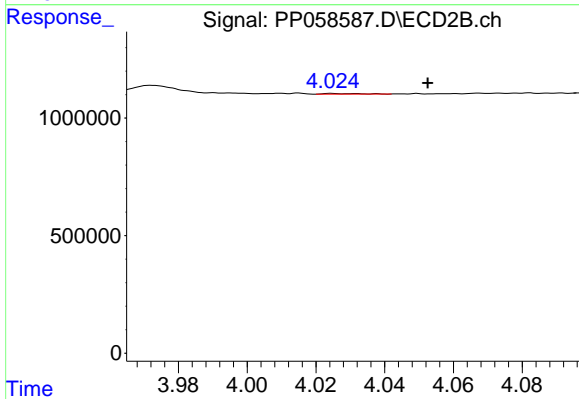
#9 AR-1221-2

R.T.: 3.972 min
 Delta R.T.: -0.003 min
 Response: 457388
 Conc: 29.08 ng/ml



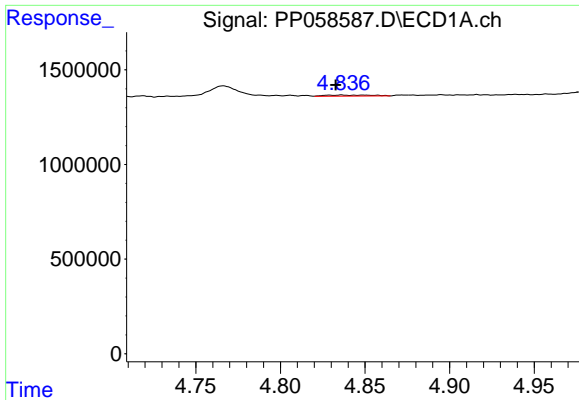
#10 AR-1221-3

R.T.: 4.836 min
 Delta R.T.: 0.004 min
 Response: 101868
 Conc: 1.59 ng/ml



#10 AR-1221-3

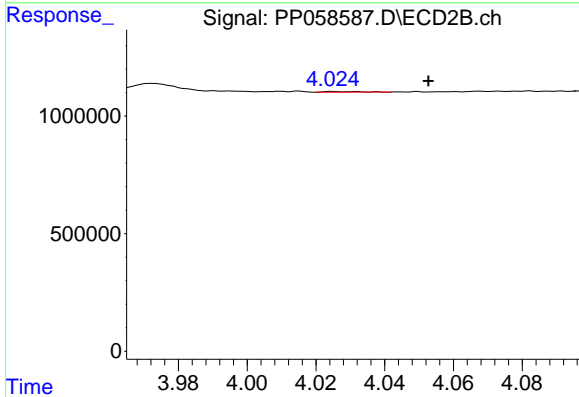
R.T.: 4.025 min
 Delta R.T.: -0.028 min
 Response: 21170
 Conc: 0.44 ng/ml



#11 AR-1232-1

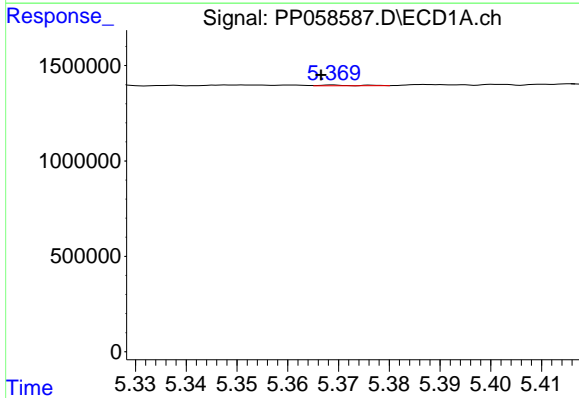
R.T.: 4.836 min
 Delta R.T.: 0.004 min
 Response: 101868
 Conc: 2.19 ng/ml

Instrument :
 ECD_P
 ClientSampleId :



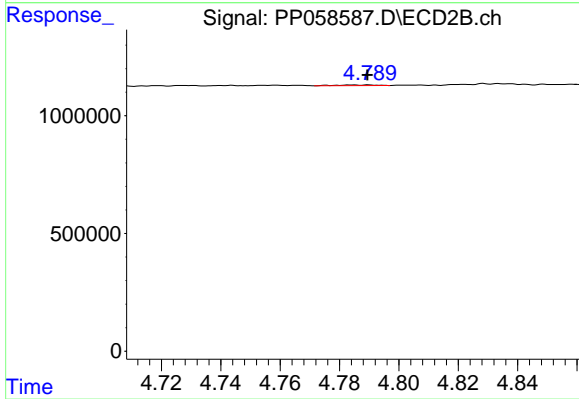
#11 AR-1232-1

R.T.: 4.025 min
 Delta R.T.: -0.028 min
 Response: 21170
 Conc: 0.62 ng/ml



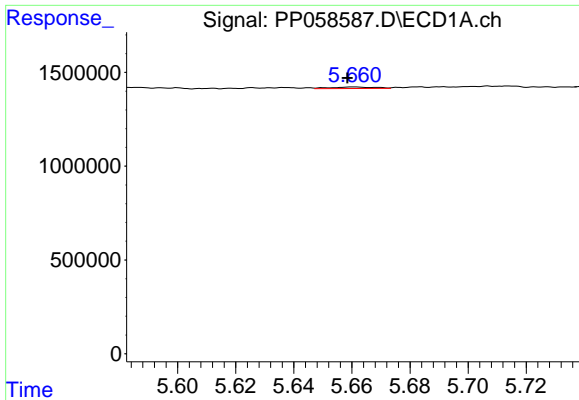
#12 AR-1232-2

R.T.: 5.369 min
 Delta R.T.: 0.002 min
 Response: 18765
 Conc: 0.70 ng/ml



#12 AR-1232-2

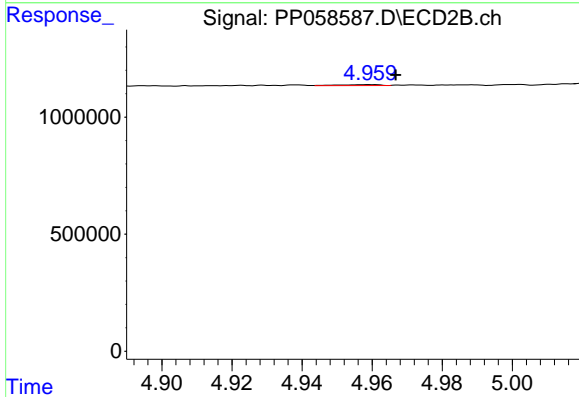
R.T.: 4.790 min
 Delta R.T.: 0.000 min
 Response: 28332
 Conc: 0.88 ng/ml



#13 AR-1232-3

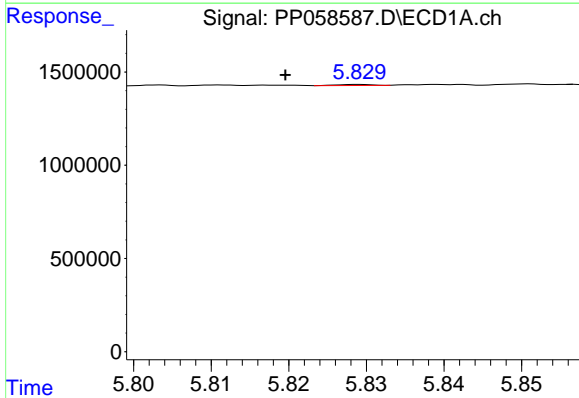
R.T.: 5.661 min
 Delta R.T.: 0.002 min
 Response: 81964
 Conc: 1.79 ng/ml

Instrument :
 ECD_P
 ClientSampleId :



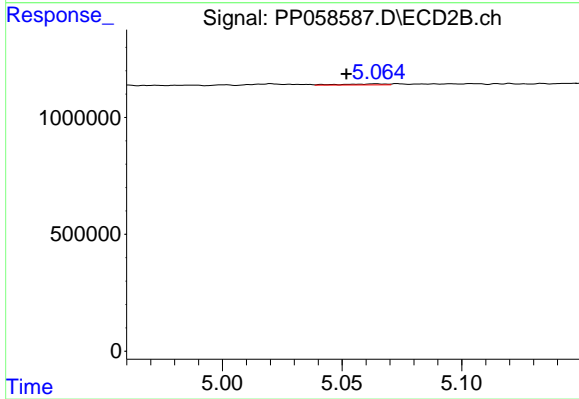
#13 AR-1232-3

R.T.: 4.959 min
 Delta R.T.: -0.007 min
 Response: 32572
 Conc: 1.87 ng/ml



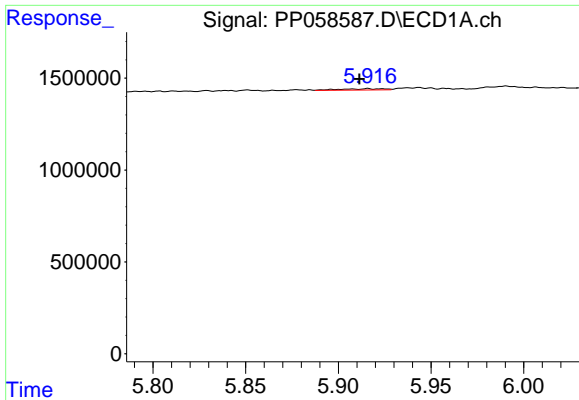
#14 AR-1232-4

R.T.: 5.829 min
 Delta R.T.: 0.009 min
 Response: 17733
 Conc: 0.76 ng/ml



#14 AR-1232-4

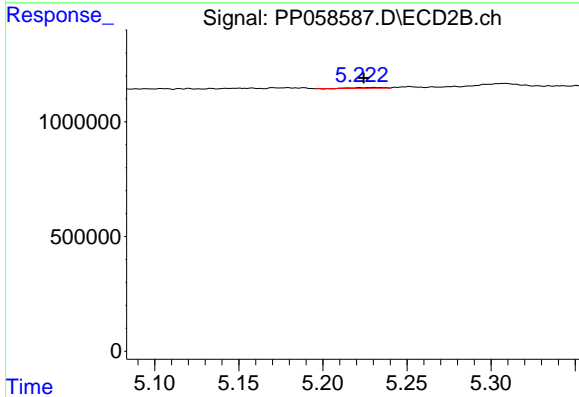
R.T.: 5.064 min
 Delta R.T.: 0.012 min
 Response: 56830
 Conc: 3.38 ng/ml



#15 AR-1232-5

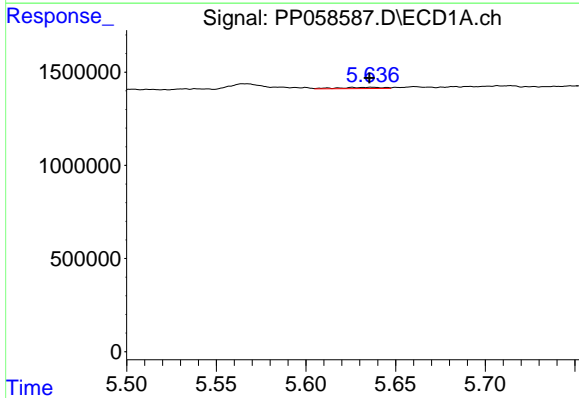
R.T.: 5.916 min
 Delta R.T.: 0.004 min
 Response: 122945
 Conc: 6.29 ng/ml

Instrument :
 ECD_P
 ClientSampleId :



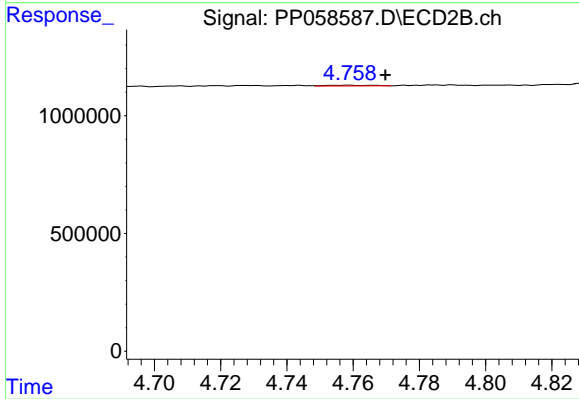
#15 AR-1232-5

R.T.: 5.230 min
 Delta R.T.: 0.006 min
 Response: 39587
 Conc: 2.14 ng/ml



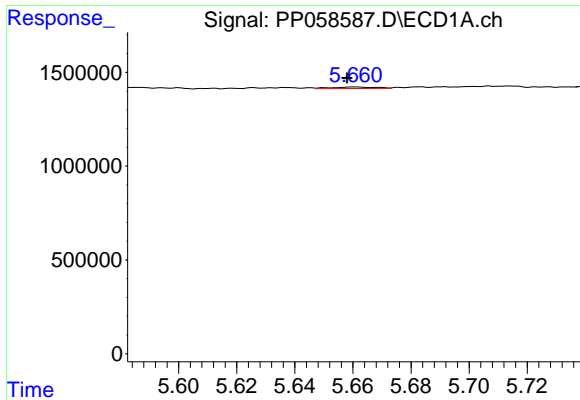
#16 AR-1242-1

R.T.: 5.626 min
 Delta R.T.: -0.009 min
 Response: 109765
 Conc: 1.96 ng/ml



#16 AR-1242-1

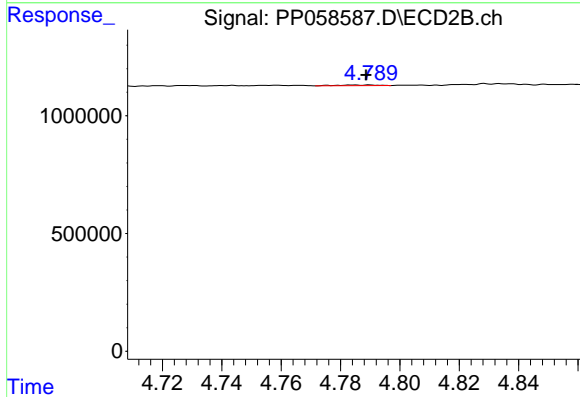
R.T.: 4.759 min
 Delta R.T.: -0.011 min
 Response: 28841
 Conc: 0.73 ng/ml



#17 AR-1242-2

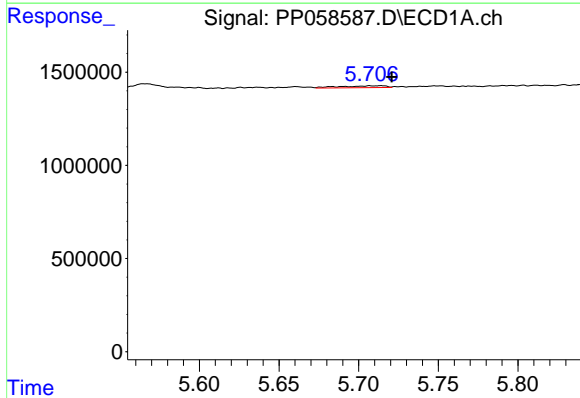
R.T.: 5.661 min
 Delta R.T.: 0.003 min
 Response: 81964
 Conc: 1.02 ng/ml

Instrument :
 ECD_P
 ClientSampleId :



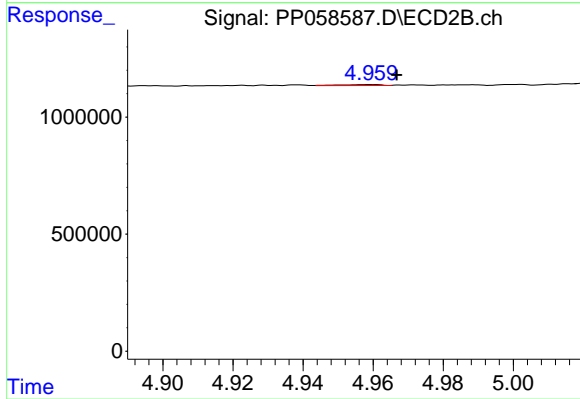
#17 AR-1242-2

R.T.: 4.790 min
 Delta R.T.: 0.001 min
 Response: 28332
 Conc: 0.51 ng/ml



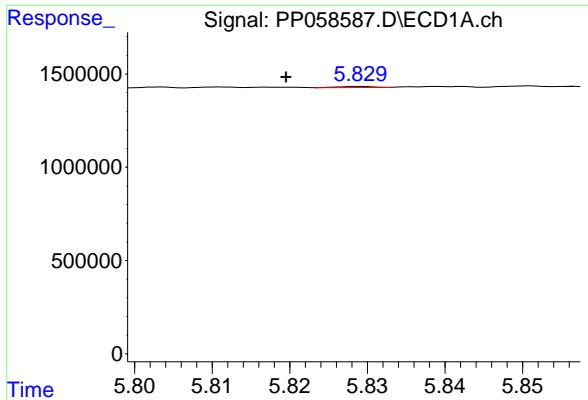
#18 AR-1242-3

R.T.: 5.714 min
 Delta R.T.: -0.006 min
 Response: 191340
 Conc: 3.78 ng/ml



#18 AR-1242-3

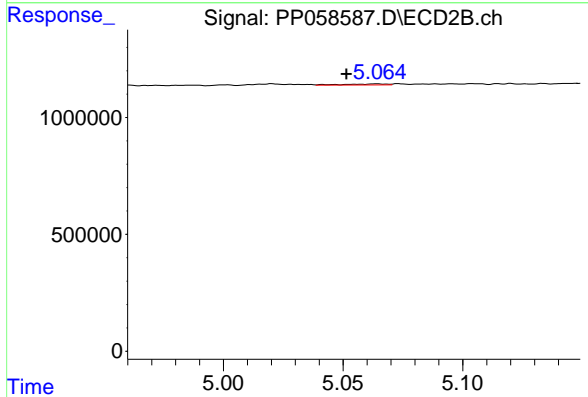
R.T.: 4.959 min
 Delta R.T.: -0.007 min
 Response: 32572
 Conc: 1.11 ng/ml



#19 AR-1242-4

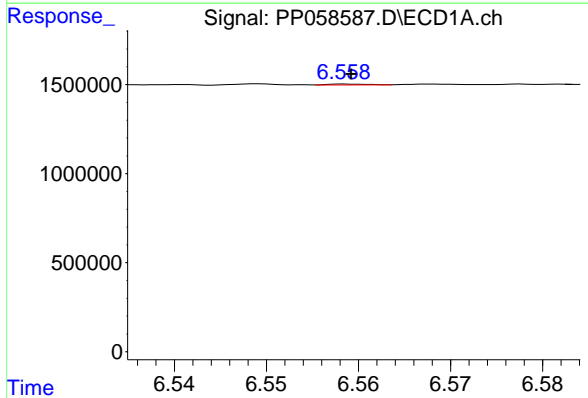
R.T.: 5.829 min
 Delta R.T.: 0.009 min
 Response: 17733
 Conc: 0.44 ng/ml

Instrument :
 ECD_P
 ClientSampleId :



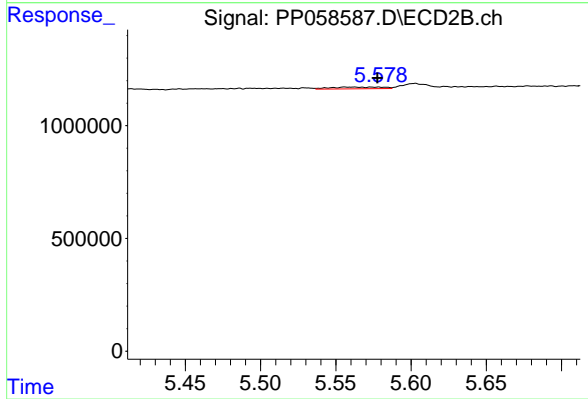
#19 AR-1242-4

R.T.: 5.064 min
 Delta R.T.: 0.013 min
 Response: 56830
 Conc: 1.76 ng/ml



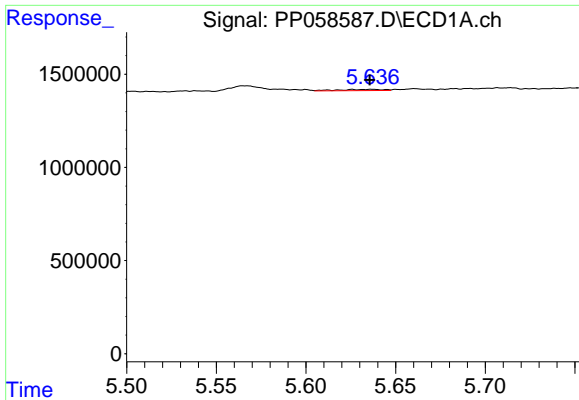
#20 AR-1242-5

R.T.: 6.559 min
 Delta R.T.: 0.000 min
 Response: 16603
 Conc: 0.46 ng/ml



#20 AR-1242-5

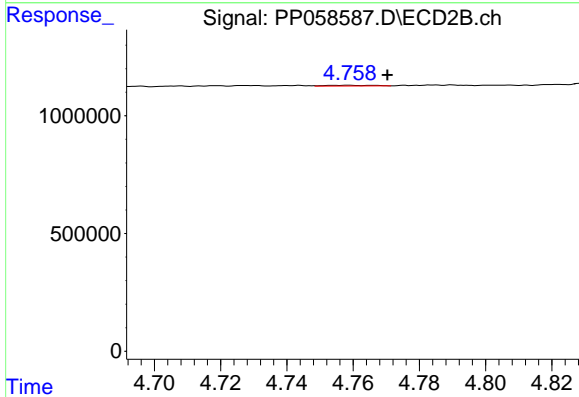
R.T.: 5.556 min
 Delta R.T.: -0.022 min
 Response: 194310
 Conc: 5.12 ng/ml



#21 AR-1248-1

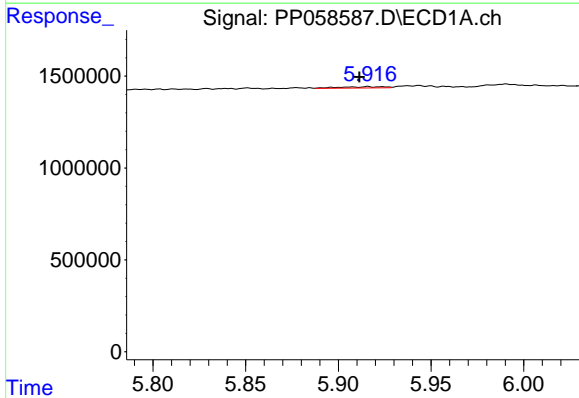
R.T.: 5.626 min
 Delta R.T.: -0.010 min
 Response: 109765
 Conc: 2.58 ng/ml

Instrument :
 ECD_P
 ClientSampleId :



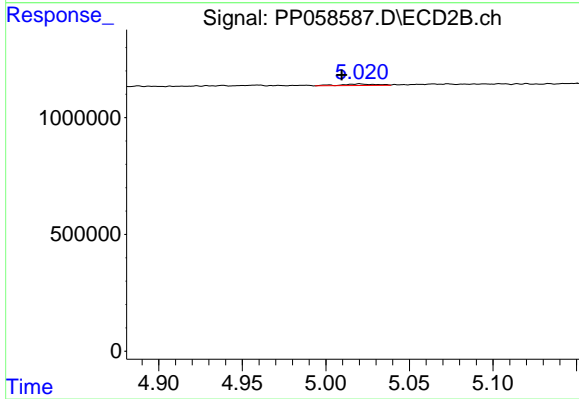
#21 AR-1248-1

R.T.: 4.759 min
 Delta R.T.: -0.012 min
 Response: 28841
 Conc: 0.94 ng/ml



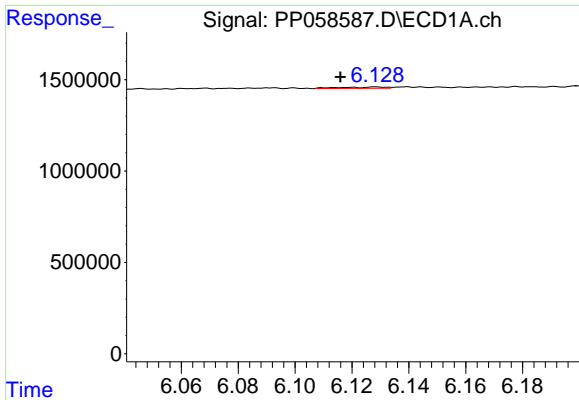
#22 AR-1248-2

R.T.: 5.916 min
 Delta R.T.: 0.005 min
 Response: 122945
 Conc: 1.91 ng/ml



#22 AR-1248-2

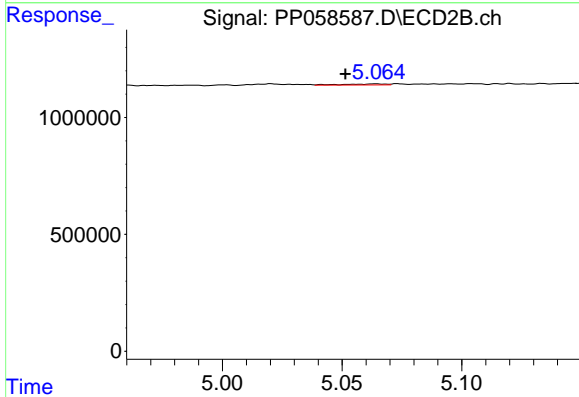
R.T.: 5.020 min
 Delta R.T.: 0.011 min
 Response: 100604
 Conc: 2.20 ng/ml



#23 AR-1248-3

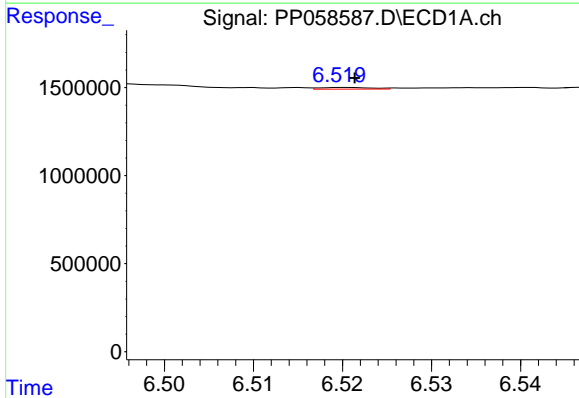
R.T.: 6.129 min
 Delta R.T.: 0.013 min
 Response: 76514
 Conc: 1.09 ng/ml

Instrument :
 ECD_P
 ClientSampleId :



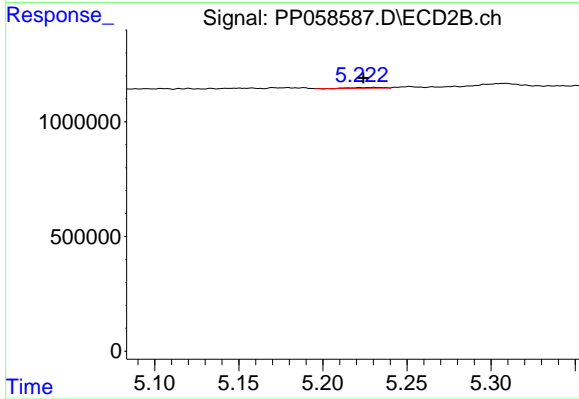
#23 AR-1248-3

R.T.: 5.064 min
 Delta R.T.: 0.013 min
 Response: 56830
 Conc: 1.20 ng/ml



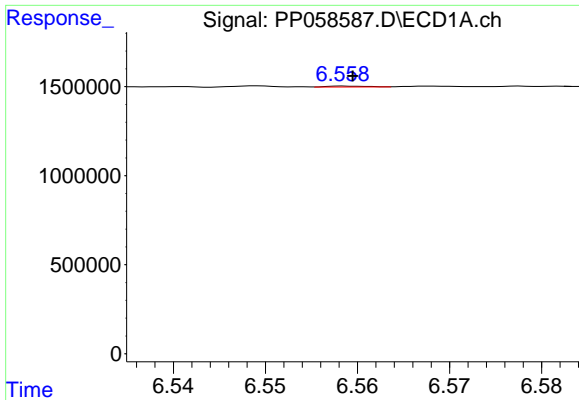
#24 AR-1248-4

R.T.: 6.520 min
 Delta R.T.: -0.001 min
 Response: 38793
 Conc: 0.57 ng/ml



#24 AR-1248-4

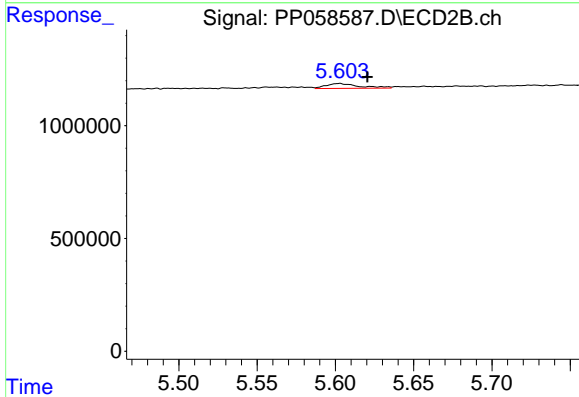
R.T.: 5.230 min
 Delta R.T.: 0.006 min
 Response: 39587
 Conc: 0.72 ng/ml



#25 AR-1248-5

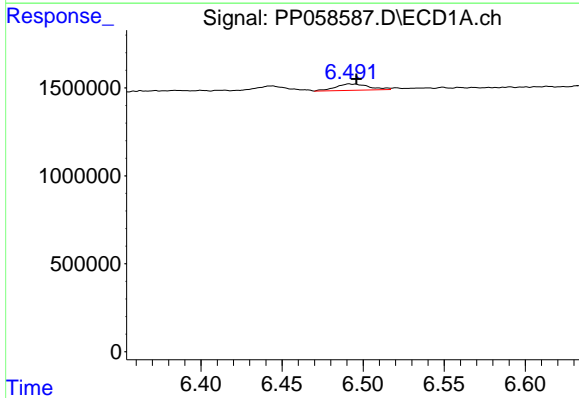
R.T.: 6.559 min
 Delta R.T.: 0.000 min
 Response: 16603
 Conc: 0.26 ng/ml

Instrument :
 ECD_P
 ClientSampleId :



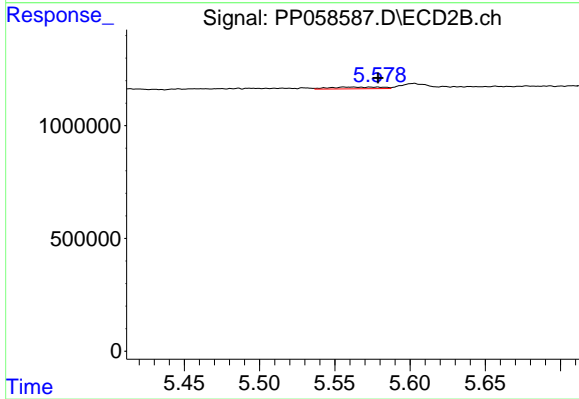
#25 AR-1248-5

R.T.: 5.602 min
 Delta R.T.: -0.018 min
 Response: 325105
 Conc: 6.62 ng/ml



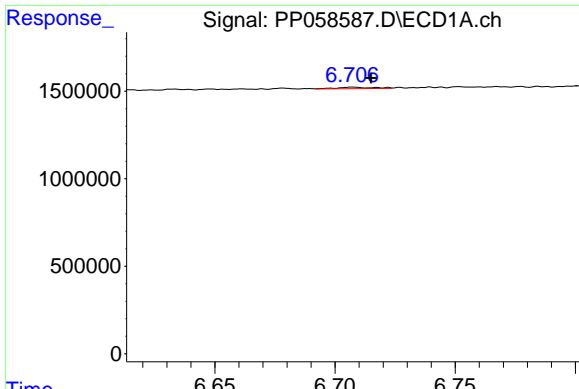
#26 AR-1254-1

R.T.: 6.492 min
 Delta R.T.: -0.004 min
 Response: 517921
 Conc: 6.76 ng/ml



#26 AR-1254-1

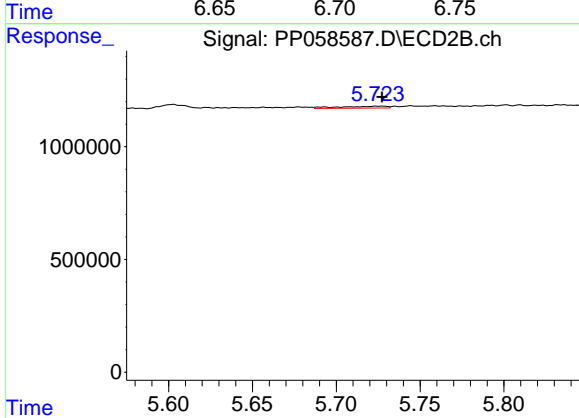
R.T.: 5.556 min
 Delta R.T.: -0.023 min
 Response: 194310
 Conc: 2.52 ng/ml



#27 AR-1254-2

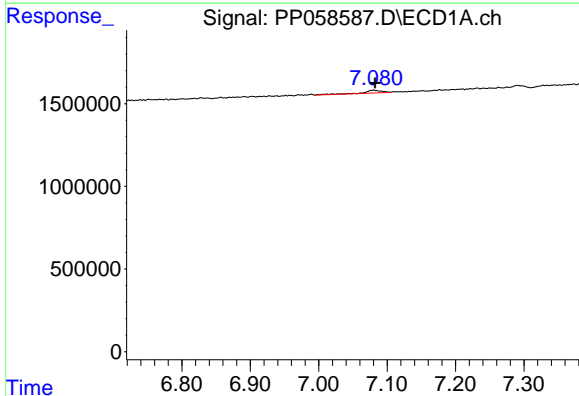
R.T.: 6.707 min
 Delta R.T.: -0.008 min
 Response: 93644
 Conc: 0.85 ng/ml

Instrument :
 ECD_P
 ClientSampleId :



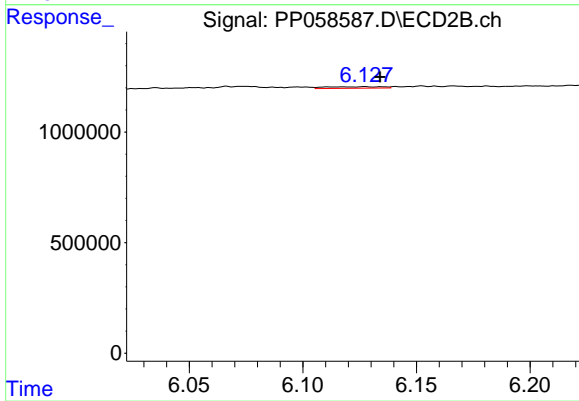
#27 AR-1254-2

R.T.: 5.726 min
 Delta R.T.: 0.000 min
 Response: 168245
 Conc: 2.46 ng/ml



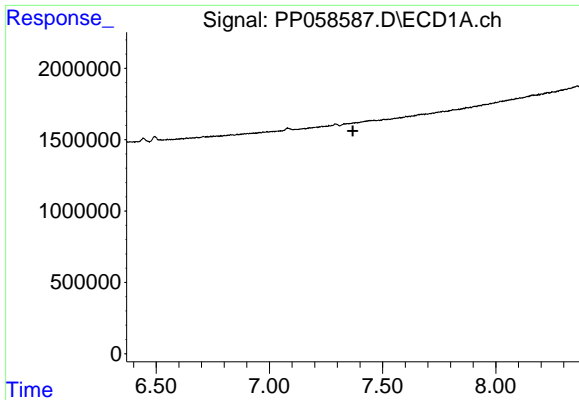
#28 AR-1254-3

R.T.: 7.080 min
 Delta R.T.: -0.002 min
 Response: 327278
 Conc: 3.05 ng/ml



#28 AR-1254-3

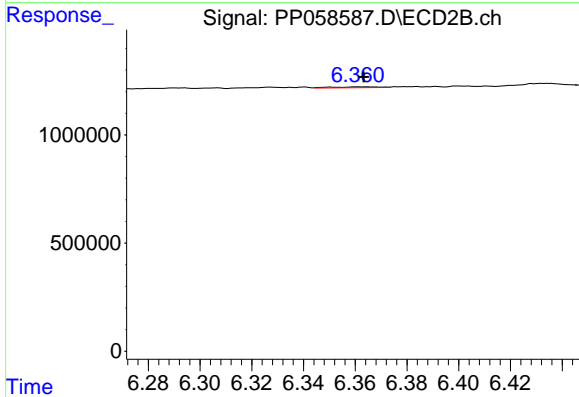
R.T.: 6.127 min
 Delta R.T.: -0.007 min
 Response: 124055
 Conc: 1.18 ng/ml



#29 AR-1254-4

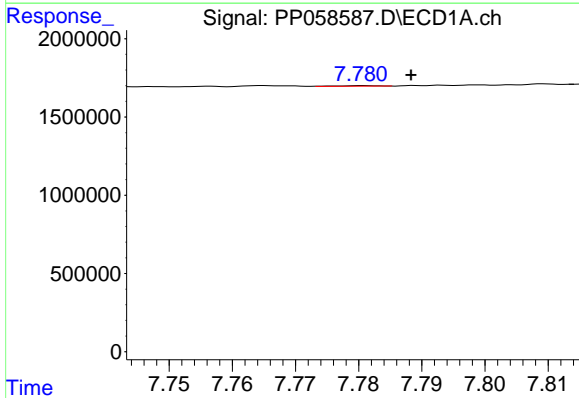
R.T.: 7.382 min
 Delta R.T.: 0.013 min
 Response: -166441
 Conc: N.D.

Instrument :
 ECD_P
 ClientSampleId :



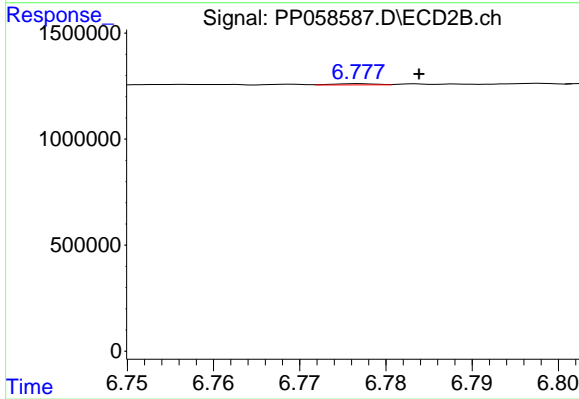
#29 AR-1254-4

R.T.: 6.364 min
 Delta R.T.: 0.000 min
 Response: 55850
 Conc: 0.93 ng/ml



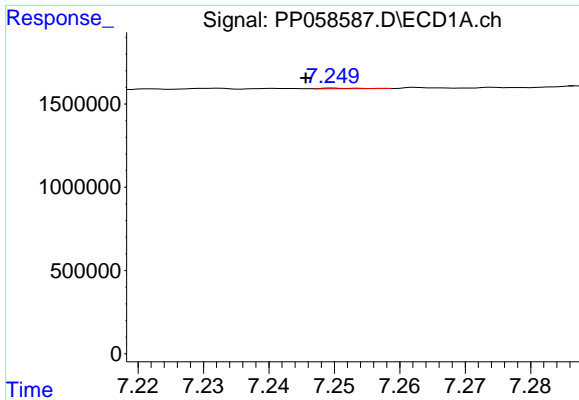
#30 AR-1254-5

R.T.: 7.781 min
 Delta R.T.: -0.008 min
 Response: 18511
 Conc: 0.23 ng/ml



#30 AR-1254-5

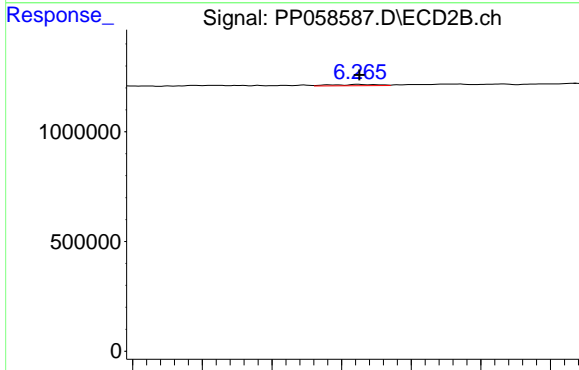
R.T.: 6.777 min
 Delta R.T.: -0.007 min
 Response: 20178
 Conc: 0.22 ng/ml



#31 AR-1260-1

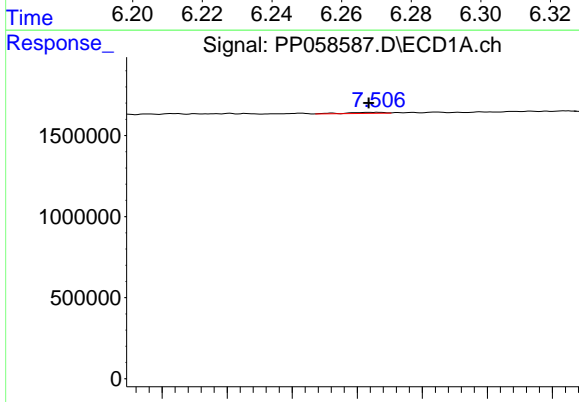
R.T.: 7.250 min
 Delta R.T.: 0.005 min
 Response: 10410
 Conc: 0.12 ng/ml

Instrument :
 ECD_P
 ClientSampleId :



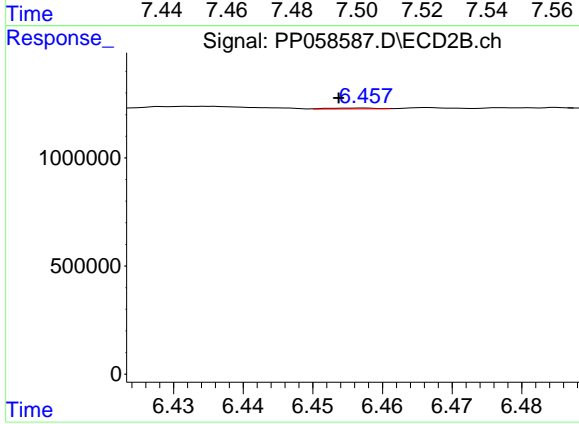
#31 AR-1260-1

R.T.: 6.265 min
 Delta R.T.: 0.000 min
 Response: 52491
 Conc: 0.68 ng/ml



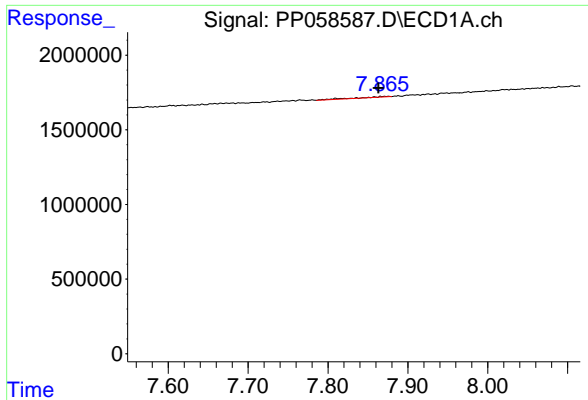
#32 AR-1260-2

R.T.: 7.506 min
 Delta R.T.: 0.002 min
 Response: 55357
 Conc: 0.57 ng/ml



#32 AR-1260-2

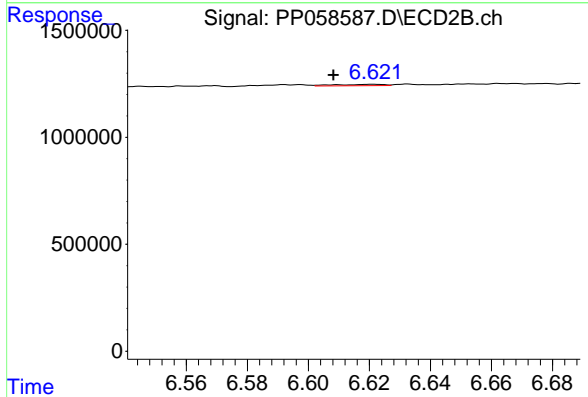
R.T.: 6.456 min
 Delta R.T.: 0.003 min
 Response: 19827
 Conc: 0.22 ng/ml



#33 AR-1260-3

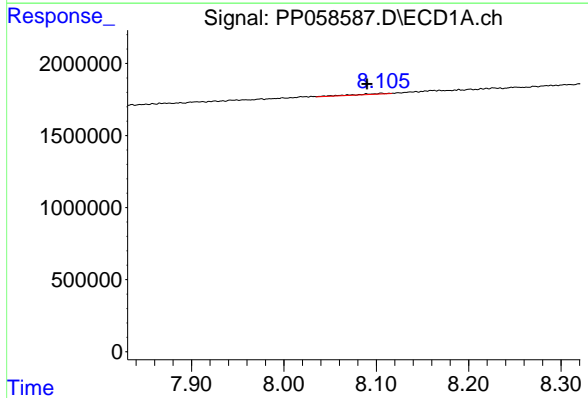
R.T.: 7.876 min
 Delta R.T.: 0.013 min
 Response: 143691
 Conc: 2.35 ng/ml

Instrument :
 ECD_P
 ClientSampleId :



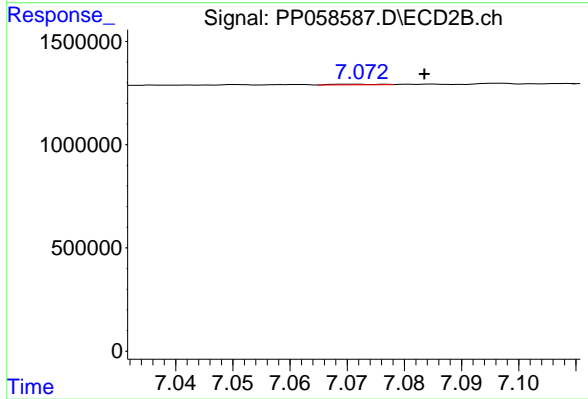
#33 AR-1260-3

R.T.: 6.621 min
 Delta R.T.: 0.013 min
 Response: 74964
 Conc: 0.89 ng/ml



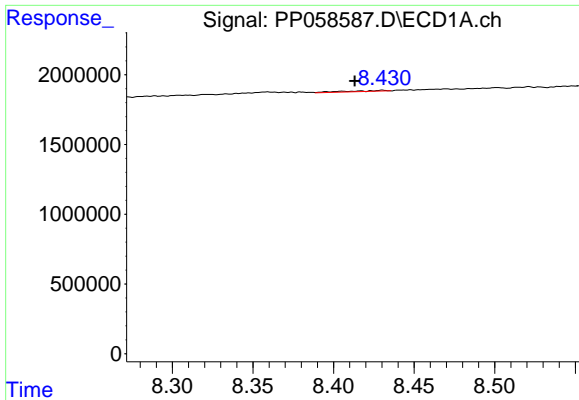
#34 AR-1260-4

R.T.: 8.106 min
 Delta R.T.: 0.016 min
 Response: 149992
 Conc: 2.02 ng/ml



#34 AR-1260-4

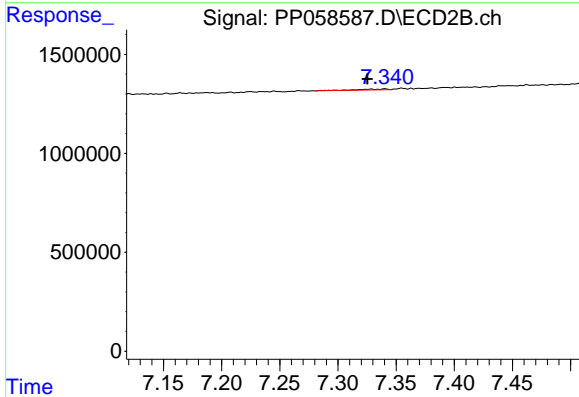
R.T.: 7.071 min
 Delta R.T.: -0.013 min
 Response: 18432
 Conc: 0.31 ng/ml



#35 AR-1260-5

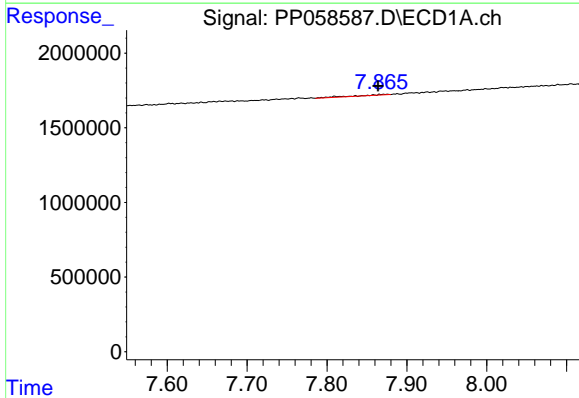
R.T.: 8.430 min
 Delta R.T.: 0.017 min
 Response: 112285
 Conc: 0.86 ng/ml

Instrument :
 ECD_P
 ClientSampleId :



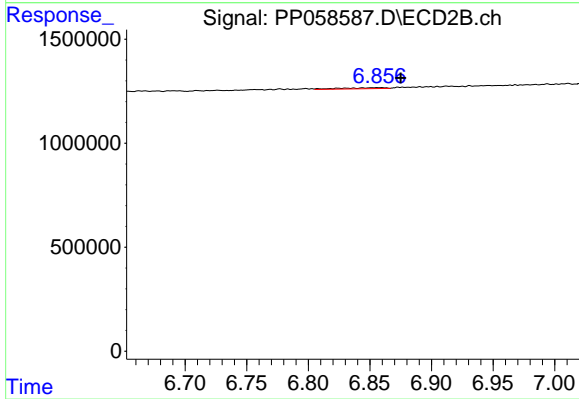
#35 AR-1260-5

R.T.: 7.340 min
 Delta R.T.: 0.015 min
 Response: 82512
 Conc: 0.64 ng/ml



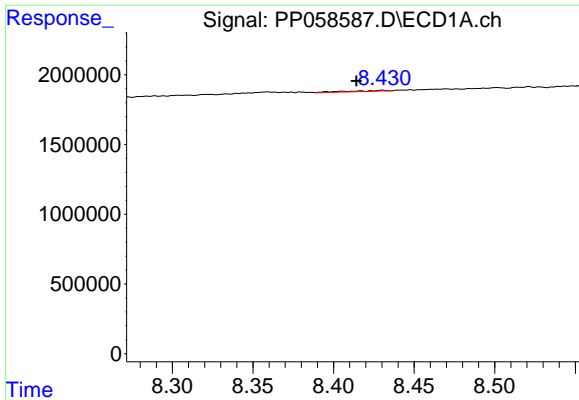
#36 AR-1262-1

R.T.: 7.876 min
 Delta R.T.: 0.012 min
 Response: 143691
 Conc: 1.40 ng/ml



#36 AR-1262-1

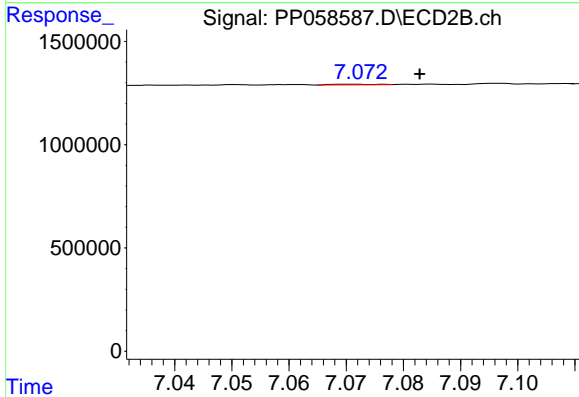
R.T.: 6.857 min
 Delta R.T.: -0.018 min
 Response: 120701
 Conc: 2.84 ng/ml



#37 AR-1262-2

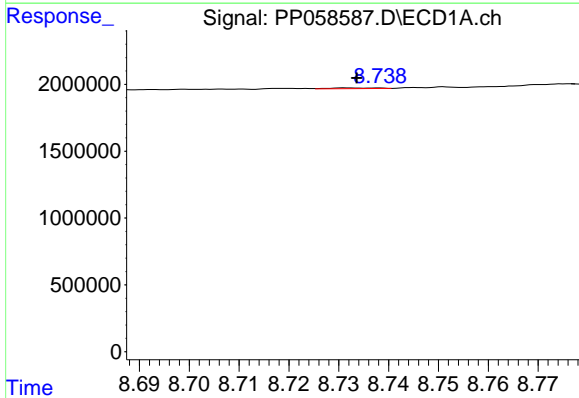
R.T.: 8.430 min
 Delta R.T.: 0.016 min
 Response: 112285
 Conc: 0.67 ng/ml

Instrument :
 ECD_P
 ClientSampleId :



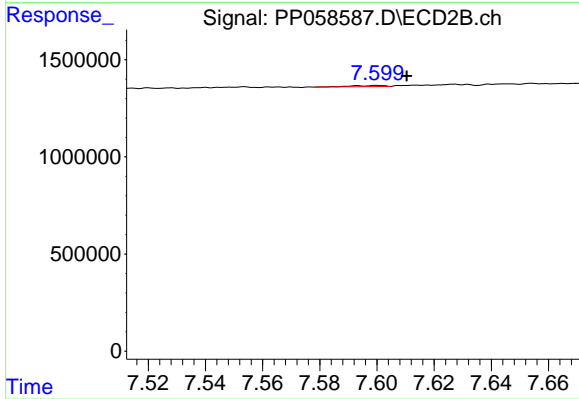
#37 AR-1262-2

R.T.: 7.071 min
 Delta R.T.: -0.012 min
 Response: 18432
 Conc: 0.20 ng/ml



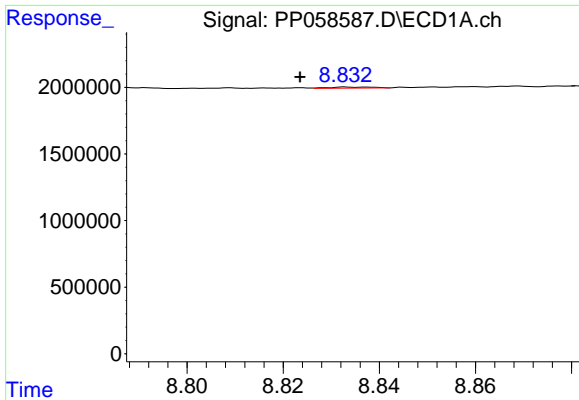
#38 AR-1262-3

R.T.: 8.732 min
 Delta R.T.: -0.002 min
 Response: 32805
 Conc: 0.29 ng/ml



#38 AR-1262-3

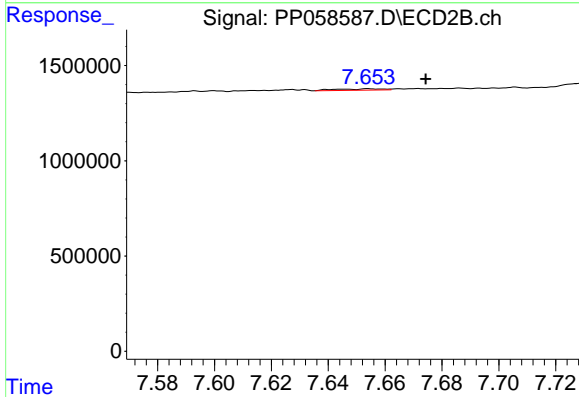
R.T.: 7.600 min
 Delta R.T.: -0.010 min
 Response: 43685
 Conc: 0.64 ng/ml



#39 AR-1262-4

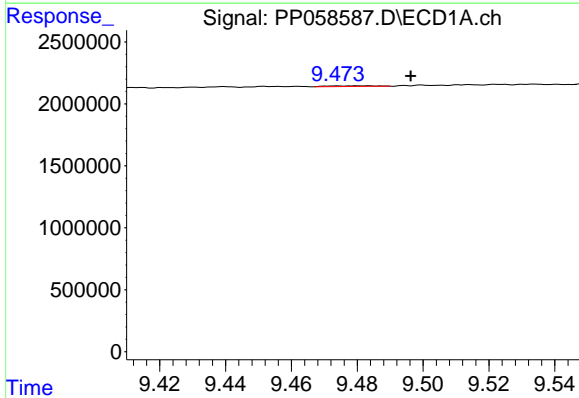
R.T.: 8.837 min
 Delta R.T.: 0.014 min
 Response: 52426
 Conc: 0.61 ng/ml

Instrument :
 ECD_P
 ClientSampleId :



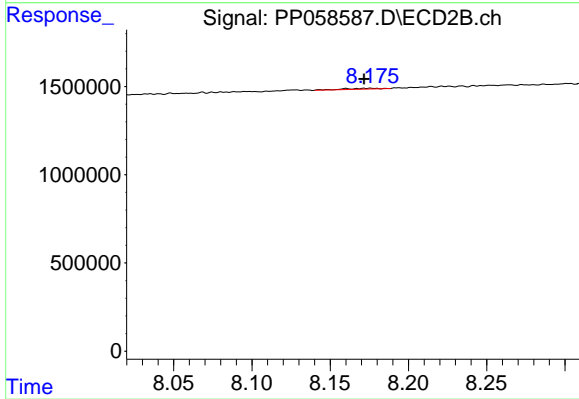
#39 AR-1262-4

R.T.: 7.654 min
 Delta R.T.: -0.020 min
 Response: 81699
 Conc: 0.67 ng/ml



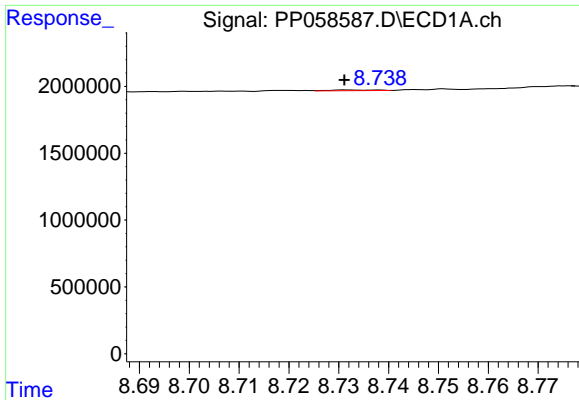
#40 AR-1262-5

R.T.: 9.481 min
 Delta R.T.: -0.015 min
 Response: 51886
 Conc: 0.95 ng/ml



#40 AR-1262-5

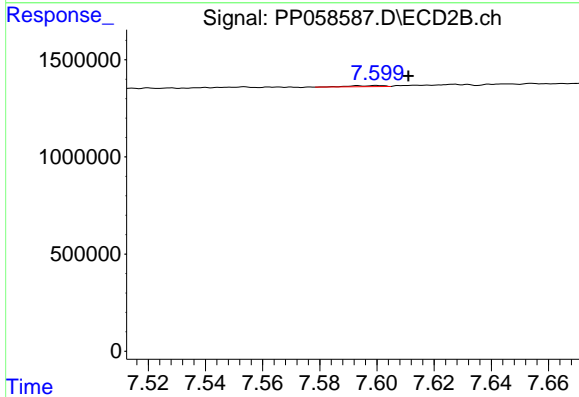
R.T.: 8.176 min
 Delta R.T.: 0.004 min
 Response: 74664
 Conc: 1.41 ng/ml



#41 AR-1268-1

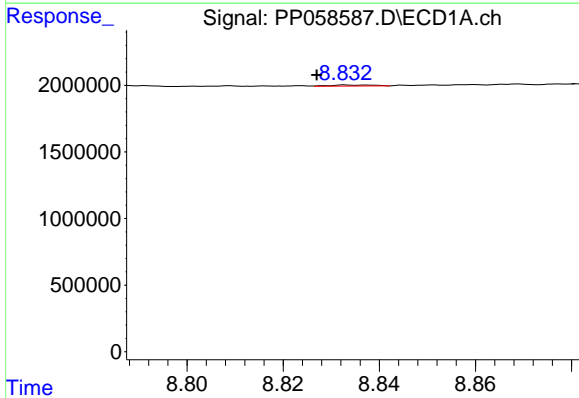
R.T.: 8.732 min
 Delta R.T.: 0.000 min
 Response: 32805
 Conc: 0.17 ng/ml

Instrument :
 ECD_P
 ClientSampleId :



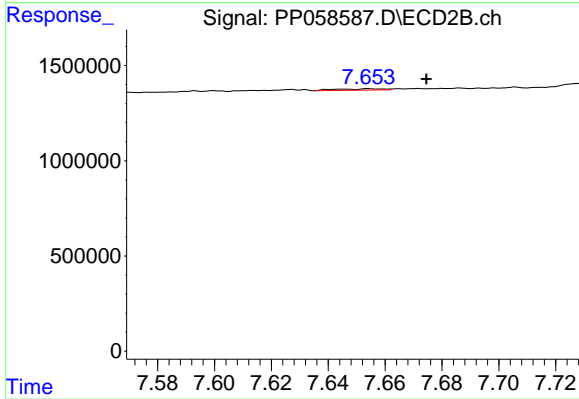
#41 AR-1268-1

R.T.: 7.600 min
 Delta R.T.: -0.011 min
 Response: 43685
 Conc: 0.24 ng/ml



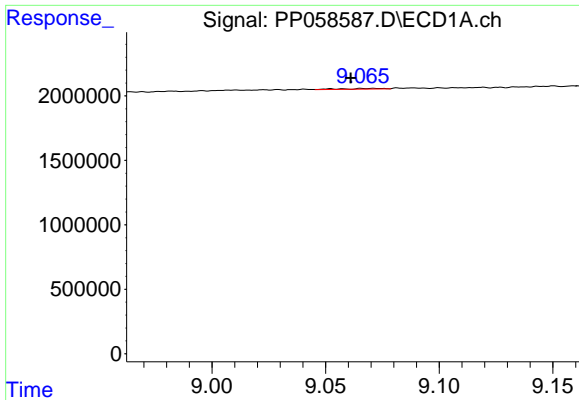
#42 AR-1268-2

R.T.: 8.837 min
 Delta R.T.: 0.010 min
 Response: 52426
 Conc: 0.30 ng/ml



#42 AR-1268-2

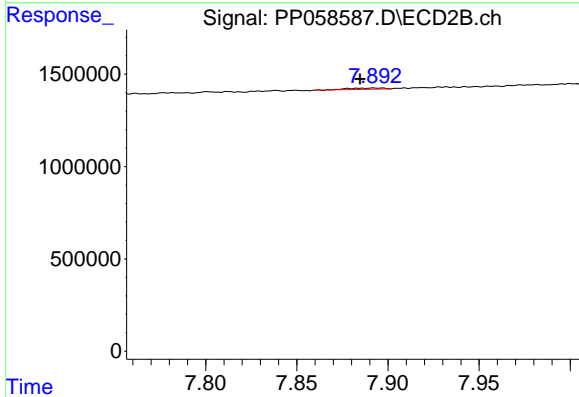
R.T.: 7.654 min
 Delta R.T.: -0.020 min
 Response: 81699
 Conc: 0.50 ng/ml



#43 AR-1268-3

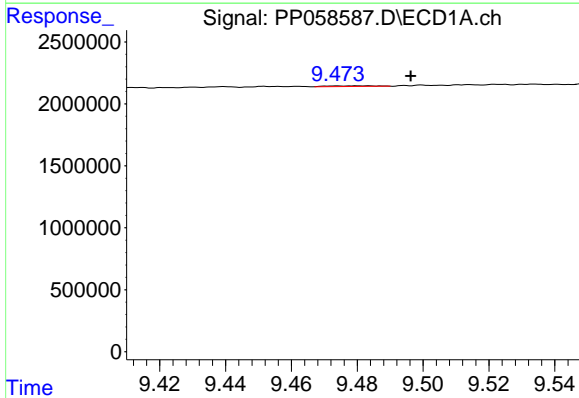
R.T.: 9.052 min
 Delta R.T.: -0.009 min
 Response: 59883
 Conc: 0.39 ng/ml

Instrument :
 ECD_P
 ClientSampleId :



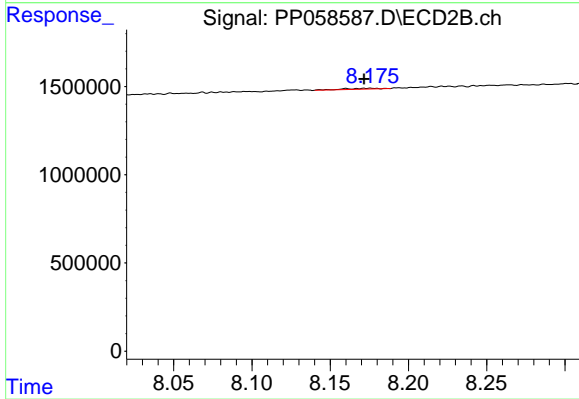
#43 AR-1268-3

R.T.: 7.892 min
 Delta R.T.: 0.008 min
 Response: 85032
 Conc: 0.59 ng/ml



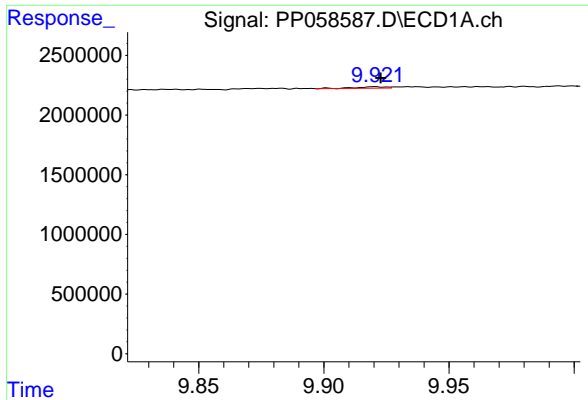
#44 AR-1268-4

R.T.: 9.481 min
 Delta R.T.: -0.015 min
 Response: 51886
 Conc: 0.91 ng/ml



#44 AR-1268-4

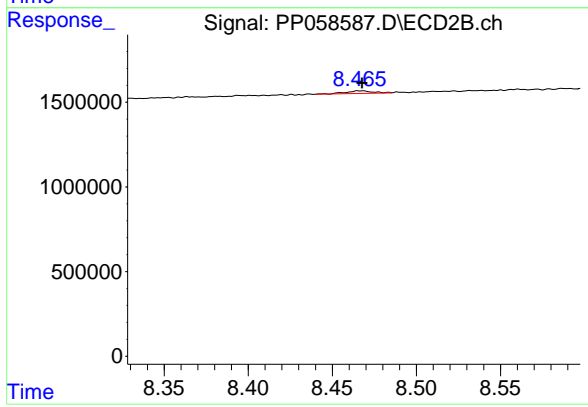
R.T.: 8.176 min
 Delta R.T.: 0.004 min
 Response: 74664
 Conc: 1.37 ng/ml



#45 AR-1268-5

R.T.: 9.920 min
 Delta R.T.: -0.002 min
 Response: 105533
 Conc: 0.23 ng/ml

Instrument :
 ECD_P
 ClientSampleId :



#45 AR-1268-5

R.T.: 8.467 min
 Delta R.T.: 0.000 min
 Response: 170924
 Conc: 0.41 ng/ml