

Data Path : Z:\pestpcbsrv\HPCHEM1\ECD_P\Data\PP062221\
Data File : PP036665.D
Signal(s) : Signal #1: ECD1A.CH Signal #2: ECD2B.CH
Acq On : 22 Jun 2021 9:09
Operator : DD\AJ
Sample : HEXANE
Misc :
ALS Vial : 1 Sample Multiplier: 1

Instrument :
ECD_P
ClientSampleId :
HEXANE

Integration File signal 1: autoint1.e
Integration File signal 2: autoint2.e
Quant Time: Jun 22 14:34:15 2021
Quant Method : Z:\pestpcbsrv\HPCHEM1\ECD_P\methods\PP061721.M
Quant Title : GC EXTRACTABLES
QLast Update : Fri Jun 18 06:06:19 2021
Response via : Initial Calibration
Integrator: ChemStation 6890 Scale Mode: Small noise peaks clipped

Volume Inj. : 2 µl
Signal #1 Phase : ZB-MR1 Signal #2 Phase: ZB-MR2
Signal #1 Info : 30Mx0.32mmx 0.50µ Signal #2 Info : 30M x 0.32mm x 0.25µm

Compound	RT#1	RT#2	Resp#1	Resp#2	ng/ml	ng/ml
----------	------	------	--------	--------	-------	-------

System Monitoring Compounds

Target Compounds

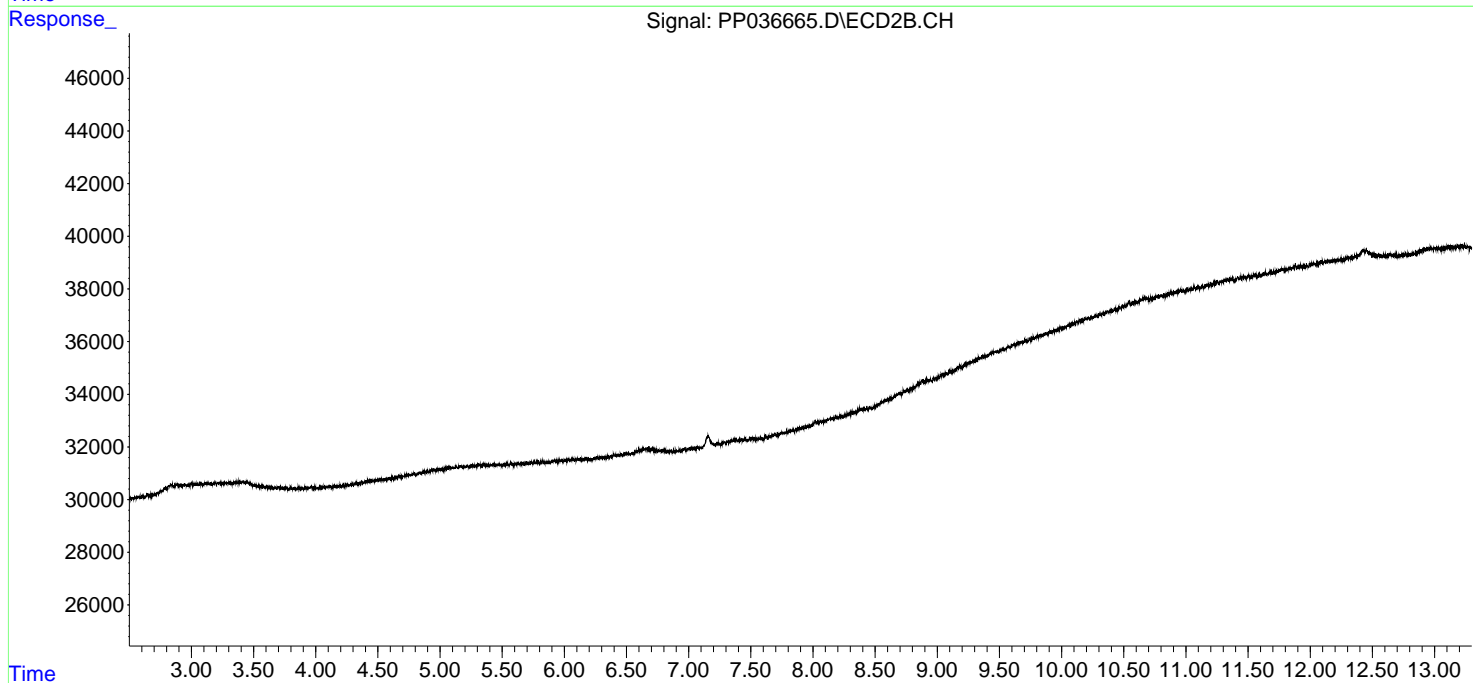
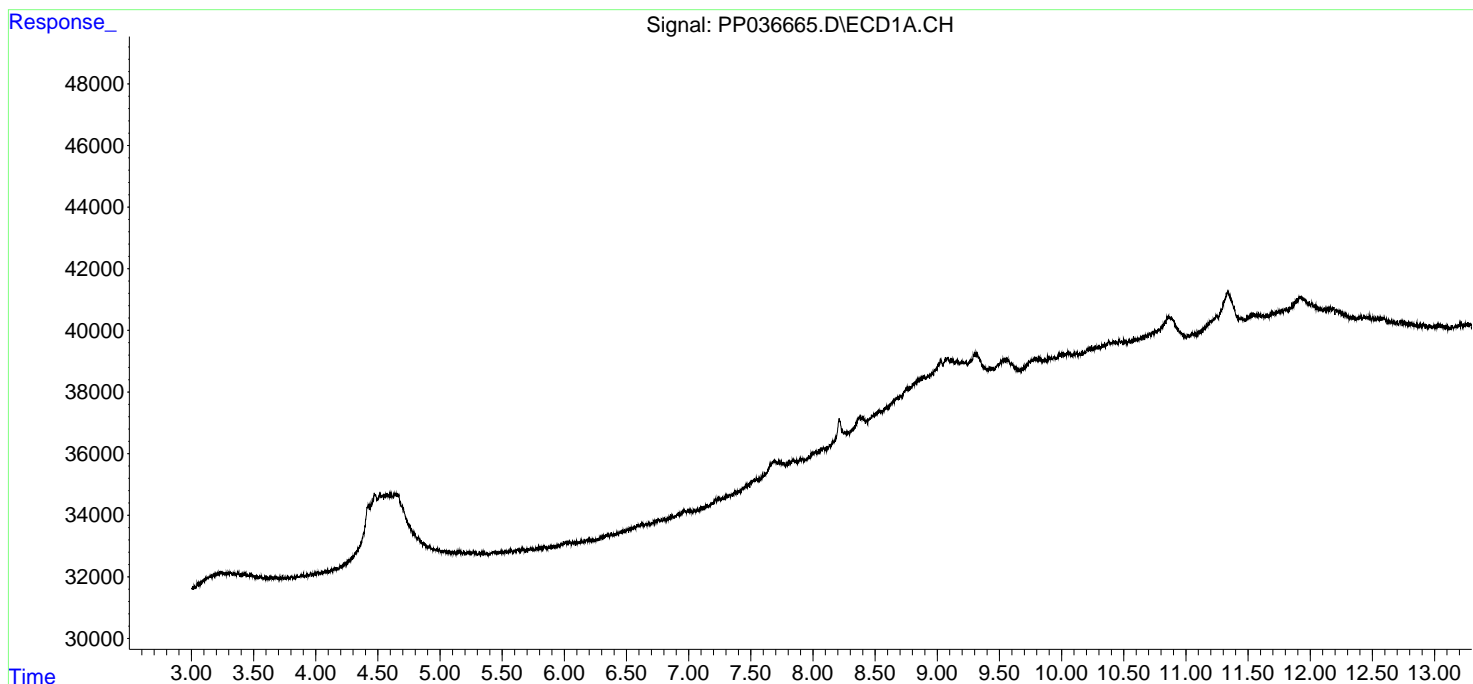
(f)=RT Delta > 1/2 Window (#)=Amounts differ by > 25% (m)=manual int.

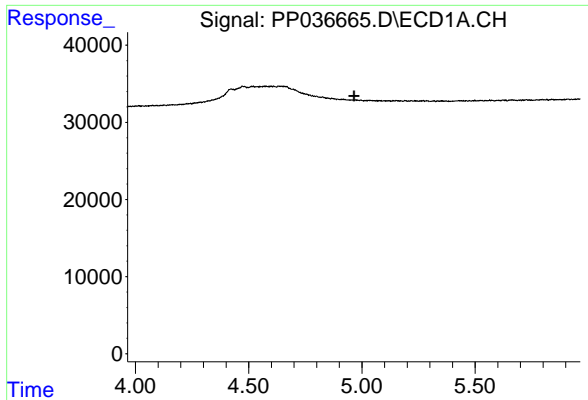
Data Path : Z:\pestpcbsrv\HPCHEM1\ECD_P\Data\PP062221\
 Data File : PP036665.D
 Signal(s) : Signal #1: ECD1A.CH Signal #2: ECD2B.CH
 Acq On : 22 Jun 2021 9:09
 Operator : DD\AJ
 Sample : HEXANE
 Misc :
 ALS Vial : 1 Sample Multiplier: 1

Instrument :
 ECD_P
 ClientSampleId :
 HEXANE

Integration File signal 1: autoint1.e
 Integration File signal 2: autoint2.e
 Quant Time: Jun 22 14:34:15 2021
 Quant Method : Z:\pestpcbsrv\HPCHEM1\ECD_P\methods\PP061721.M
 Quant Title : GC EXTRACTABLES
 QLast Update : Fri Jun 18 06:06:19 2021
 Response via : Initial Calibration
 Integrator: ChemStation 6890 Scale Mode: Small noise peaks clipped

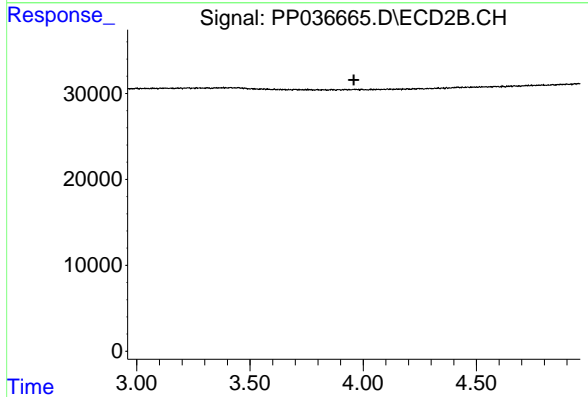
Volume Inj. : 2 µl
 Signal #1 Phase : ZB-MR1 Signal #2 Phase: ZB-MR2
 Signal #1 Info : 30Mx0.32mmx 0.50µ Signal #2 Info : 30M x 0.32mm x 0.25µm



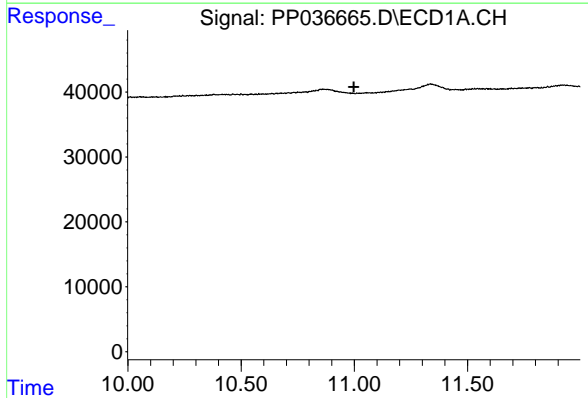


#1 Tetrachloro-m-xylene
 R.T.: 0.000 min
 Exp R.T. : 4.965 min
 Response: 0
 Conc: N.D.

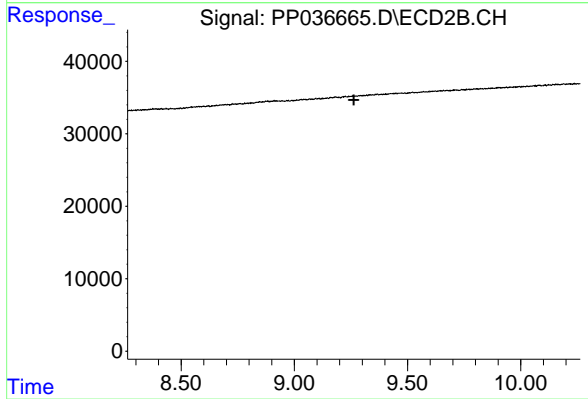
Instrument :
 ECD_P
 ClientSampleId :
 HEXANE



#1 Tetrachloro-m-xylene
 R.T.: 0.000 min
 Exp R.T. : 3.959 min
 Response: 0
 Conc: N.D.



#2 Decachlorobiphenyl
 R.T.: 0.000 min
 Exp R.T. : 10.998 min
 Response: 0
 Conc: N.D.



#2 Decachlorobiphenyl
 R.T.: 0.000 min
 Exp R.T. : 9.263 min
 Response: 0
 Conc: N.D.