

Data Path : Z:\pestpcbsrv\HPCHEM1\ECD\_P\Data\PP062321\  
 Data File : PP036729.D  
 Signal(s) : Signal #1: ECD1A.CH Signal #2: ECD2B.CH  
 Acq On : 23 Jun 2021 12:21  
 Operator : DD\AJ  
 Sample : AR1268CCC500  
 Misc :  
 ALS Vial : 5 Sample Multiplier: 1

**Instrument :**  
 ECD\_P  
**ClientSampleId :**  
 AR1268CCC500

**Manual Integrations**  
**APPROVED**  
 Ankita  
 6/24/2021 1:20:56 PM

Integration File signal 1: autoint1.e  
 Integration File signal 2: autoint2.e  
 Quant Time: Jun 24 01:19:55 2021  
 Quant Method : Z:\pestpcbsrv\HPCHEM1\ECD\_P\methods\PP061721.M  
 Quant Title : GC EXTRACTABLES  
 QLast Update : Fri Jun 18 06:06:19 2021  
 Response via : Initial Calibration  
 Integrator: ChemStation 6890 Scale Mode: Small noise peaks clipped

Volume Inj. : 2 µl  
 Signal #1 Phase : ZB-MR1 Signal #2 Phase: ZB-MR2  
 Signal #1 Info : 30Mx0.32mmx 0.50µ Signal #2 Info : 30M x 0.32mm x 0.25µm

Compound	RT#1	RT#2	Resp#1	Resp#2	ng/ml	ng/ml
-----						
System Monitoring Compounds						
1) SA Tetrachlo...	4.963	3.955	2366436	1660893	53.541	53.623
2) SA Decachlor...	10.993	9.253	3702749	2546663	86.316	79.632
Target Compounds						
41) L9 AR-1268-1	9.472	8.168	2900547	2172972	483.464	466.644
42) L9 AR-1268-2	9.568	8.233	2762129	2037468	484.554	472.338
43) L9 AR-1268-3	9.796	8.442	2351164	1726377	489.041m	472.836
44) L9 AR-1268-4	10.237	8.730	1094341	744904	464.591m	468.280
45) L9 AR-1268-5	10.655	9.008	7580647	5569302	492.944m	471.071m
-----						

(f)=RT Delta > 1/2 Window (#)=Amounts differ by > 25% (m)=manual int.

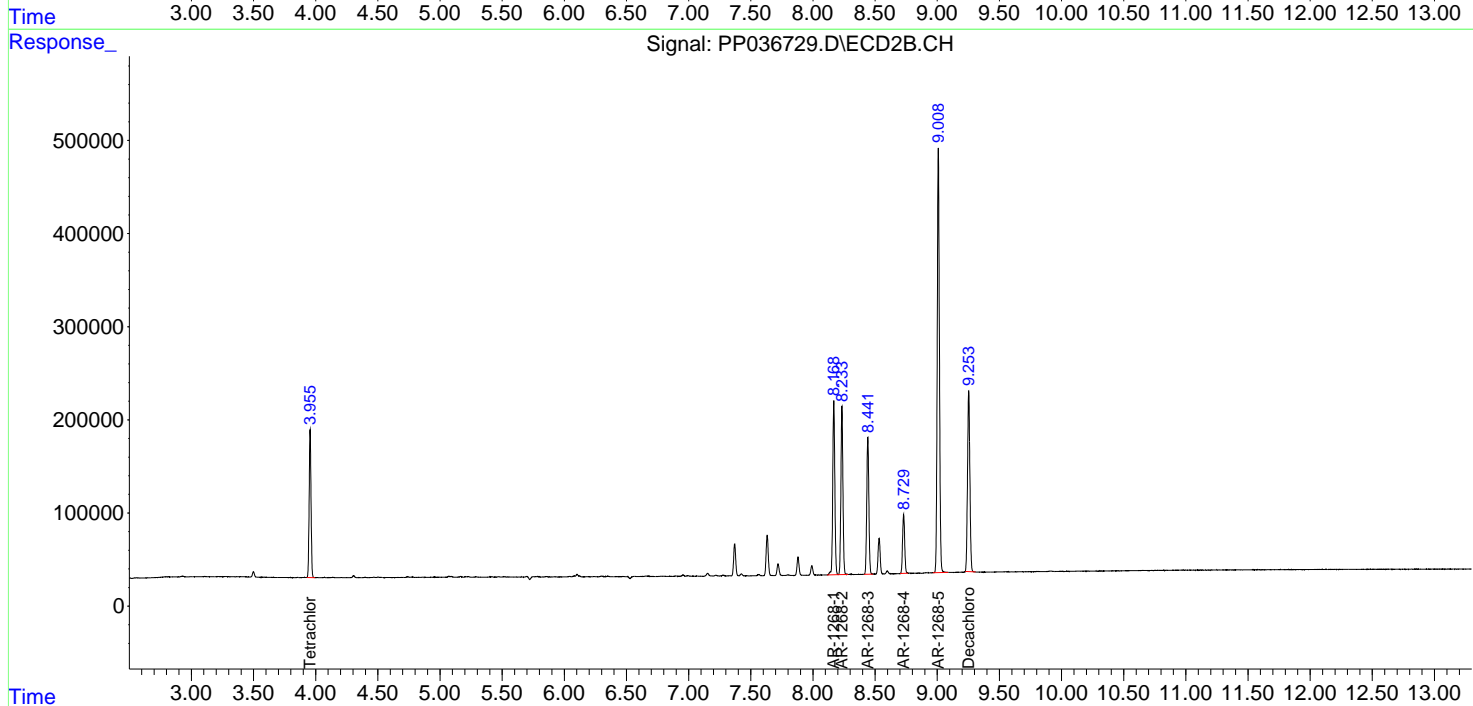
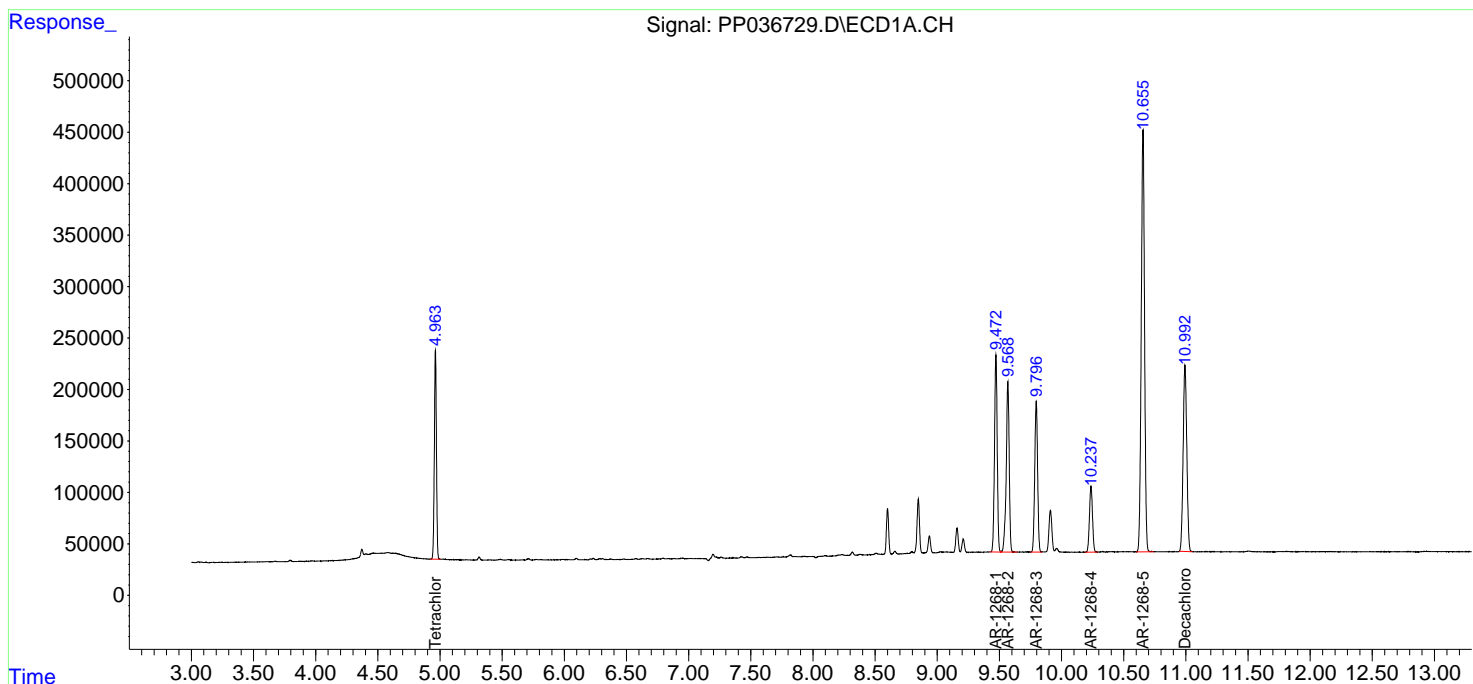
Data Path : Z:\pestpcbsrv\HPCHEM1\ECD\_P\Data\PP062321\  
 Data File : PP036729.D  
 Signal(s) : Signal #1: ECD1A.CH Signal #2: ECD2B.CH  
 Acq On : 23 Jun 2021 12:21  
 Operator : DD\AJ  
 Sample : AR1268CCC500  
 Misc :  
 ALS Vial : 5 Sample Multiplier: 1

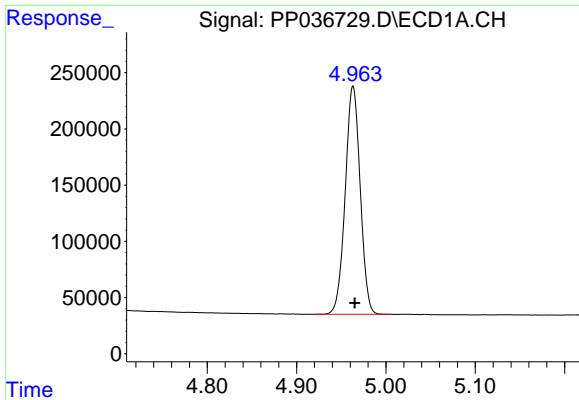
**Instrument :**  
 ECD\_P  
**ClientSampled :**  
 AR1268CCC500

**Manual Integrations**  
**APPROVED**  
 Ankita  
 6/24/2021 1:20:56 PM

Integration File signal 1: autoint1.e  
 Integration File signal 2: autoint2.e  
 Quant Time: Jun 24 01:19:55 2021  
 Quant Method : Z:\pestpcbsrv\HPCHEM1\ECD\_P\methods\PP061721.M  
 Quant Title : GC EXTRACTABLES  
 QLast Update : Fri Jun 18 06:06:19 2021  
 Response via : Initial Calibration  
 Integrator: ChemStation 6890 Scale Mode: Small noise peaks clipped

Volume Inj. : 2 µl  
 Signal #1 Phase : ZB-MR1 Signal #2 Phase: ZB-MR2  
 Signal #1 Info : 30Mx0.32mmx 0.50µ Signal #2 Info : 30M x 0.32mm x 0.25µm





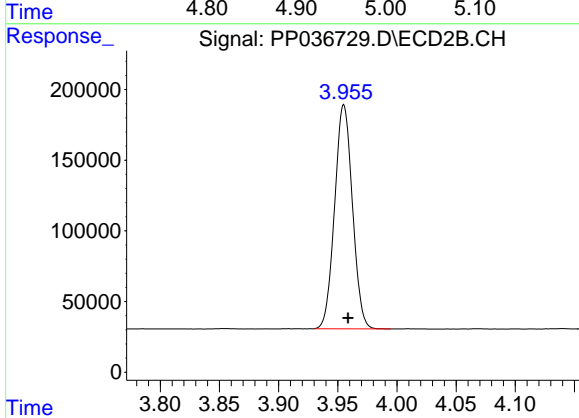
#1 Tetrachloro-m-xylene

R.T.: 4.963 min  
Delta R.T.: -0.002 min  
Response: 2366436  
Conc: 53.54 ng/ml

Instrument :  
ECD\_P  
ClientSampleId :  
AR1268CCC500

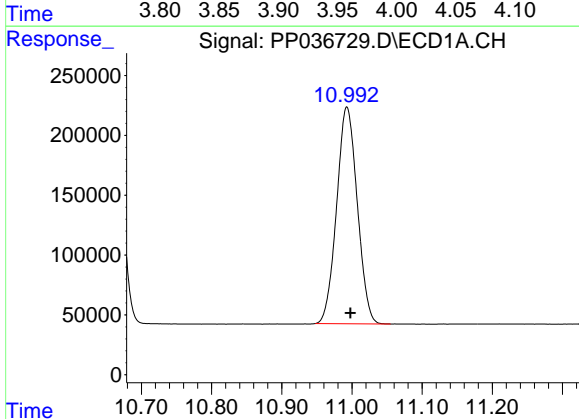
Manual Integrations  
APPROVED

Ankita  
6/24/2021 1:20:56 PM



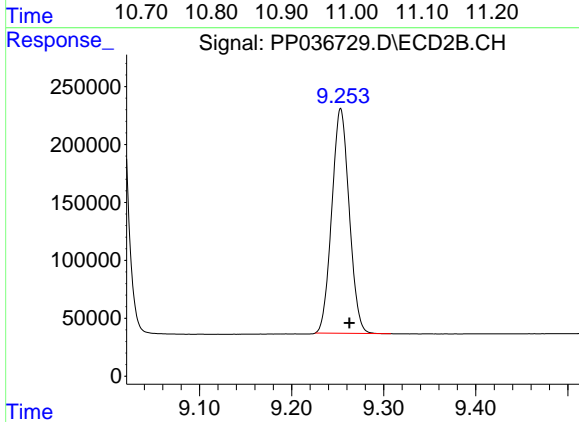
#1 Tetrachloro-m-xylene

R.T.: 3.955 min  
Delta R.T.: -0.004 min  
Response: 1660893  
Conc: 53.62 ng/ml



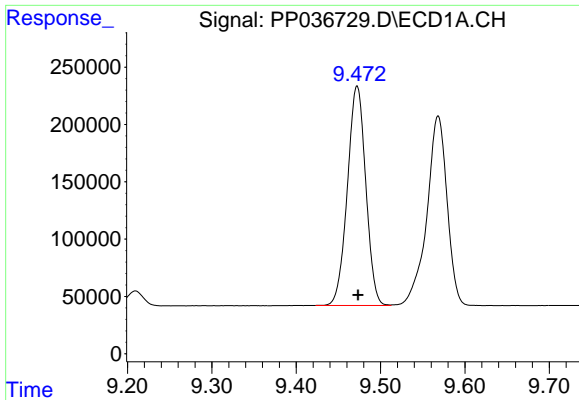
#2 Decachlorobiphenyl

R.T.: 10.993 min  
Delta R.T.: -0.005 min  
Response: 3702749  
Conc: 86.32 ng/ml



#2 Decachlorobiphenyl

R.T.: 9.253 min  
Delta R.T.: -0.010 min  
Response: 2546663  
Conc: 79.63 ng/ml

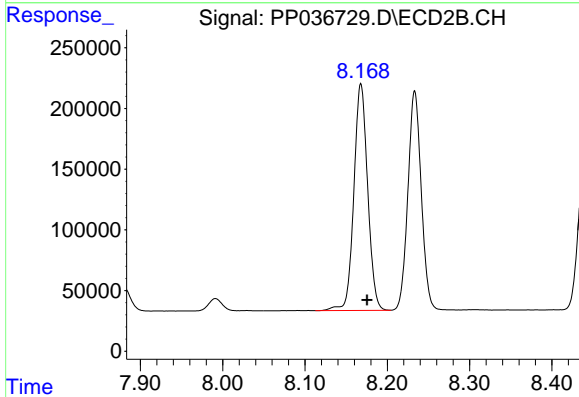


#41 AR-1268-1

R.T.: 9.472 min  
 Delta R.T.: -0.001 min  
 Response: 2900547  
 Conc: 483.46 ng/ml

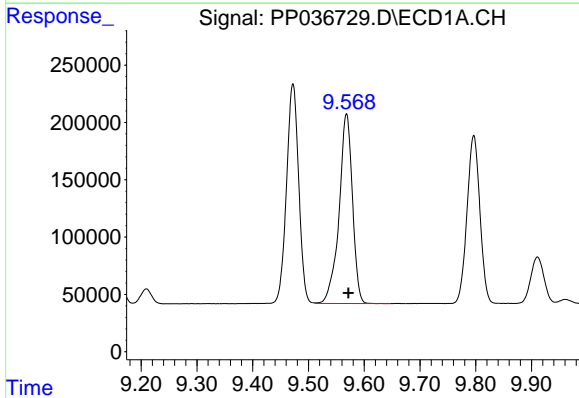
**Instrument :**  
 ECD\_P  
**ClientSampled :**  
 AR1268CCC500

**Manual Integrations**  
**APPROVED**  
 Ankita  
 6/24/2021 1:20:56 PM



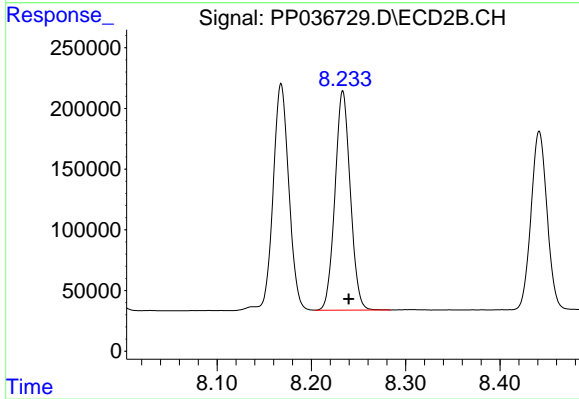
#41 AR-1268-1

R.T.: 8.168 min  
 Delta R.T.: -0.007 min  
 Response: 2172972  
 Conc: 466.64 ng/ml



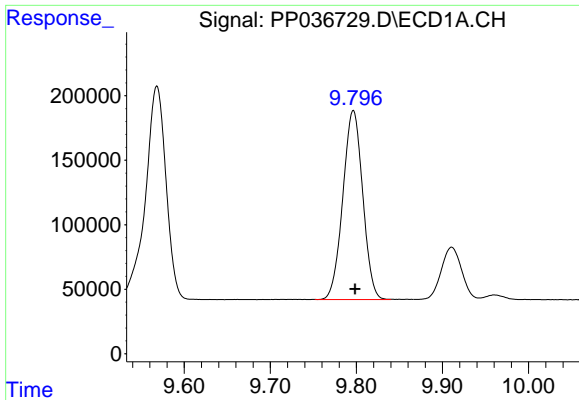
#42 AR-1268-2

R.T.: 9.568 min  
 Delta R.T.: -0.003 min  
 Response: 2762129  
 Conc: 484.55 ng/ml



#42 AR-1268-2

R.T.: 8.233 min  
 Delta R.T.: -0.006 min  
 Response: 2037468  
 Conc: 472.34 ng/ml

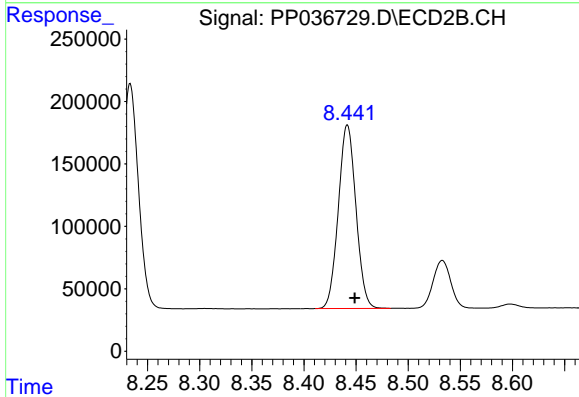


#43 AR-1268-3

R.T.: 9.796 min  
 Delta R.T.: -0.002 min  
 Response: 2351164  
 Conc: 489.04 ng/ml m

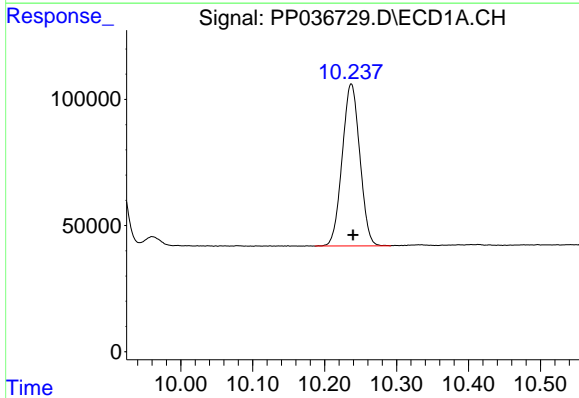
Instrument :  
 ECD\_P  
 ClientSampleId :  
 AR1268CCC500

Manual Integrations  
 APPROVED  
 Ankita  
 6/24/2021 1:20:56 PM



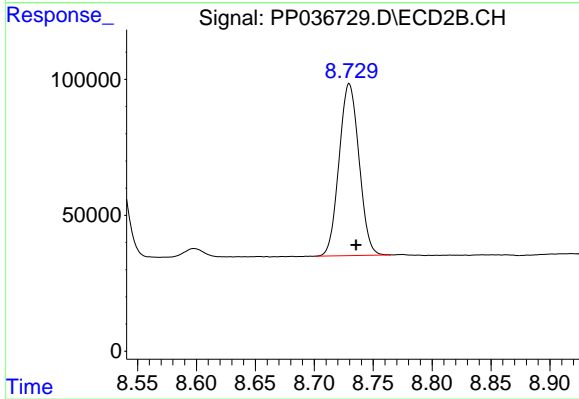
#43 AR-1268-3

R.T.: 8.442 min  
 Delta R.T.: -0.007 min  
 Response: 1726377  
 Conc: 472.84 ng/ml



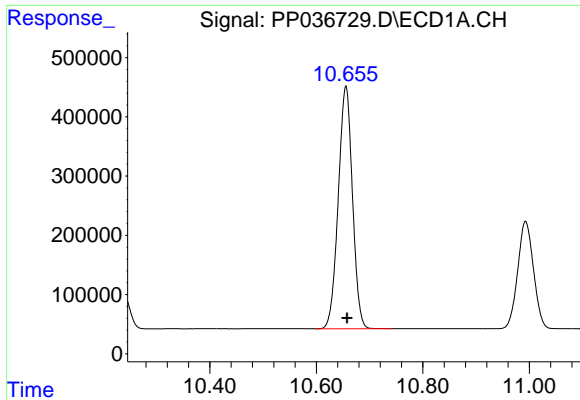
#44 AR-1268-4

R.T.: 10.237 min  
 Delta R.T.: -0.003 min  
 Response: 1094341  
 Conc: 464.59 ng/ml m



#44 AR-1268-4

R.T.: 8.730 min  
 Delta R.T.: -0.006 min  
 Response: 744904  
 Conc: 468.28 ng/ml



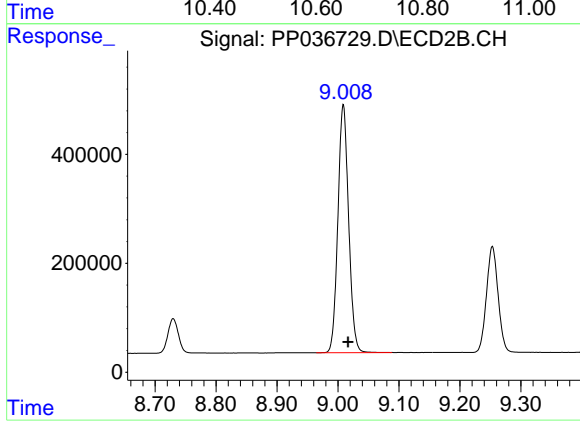
#45 AR-1268-5

R.T.: 10.655 min  
Delta R.T.: -0.002 min  
Response: 7580647  
Conc: 492.94 ng/ml m

Instrument :  
ECD\_P  
ClientSampled :  
AR1268CCC500

Manual Integrations  
APPROVED

Ankita  
6/24/2021 1:20:56 PM



#45 AR-1268-5

R.T.: 9.008 min  
Delta R.T.: -0.008 min  
Response: 5569302  
Conc: 471.07 ng/ml m