

Data Path : Z:\pestpcbsrv\HPCHEM1\ECD\_P\Data\PP062321\  
 Data File : PP036738.D  
 Signal(s) : Signal #1: ECD1A.CH Signal #2: ECD2B.CH  
 Acq On : 23 Jun 2021 14:56  
 Operator : DD\AJ  
 Sample : M2795-05  
 Misc :  
 ALS Vial : 16 Sample Multiplier: 1

Instrument :  
 ECD\_P  
 ClientSampleId :  
 B3-0-2

Integration File signal 1: autoint1.e  
 Integration File signal 2: autoint2.e  
 Quant Time: Jun 24 01:22:34 2021  
 Quant Method : Z:\pestpcbsrv\HPCHEM1\ECD\_P\methods\PP061721.M  
 Quant Title : GC EXTRACTABLES  
 QLast Update : Fri Jun 18 06:06:19 2021  
 Response via : Initial Calibration  
 Integrator: ChemStation 6890 Scale Mode: Small noise peaks clipped

Volume Inj. : 2 µl  
 Signal #1 Phase : ZB-MR1 Signal #2 Phase: ZB-MR2  
 Signal #1 Info : 30Mx0.32mmx 0.50µ Signal #2 Info : 30M x 0.32mm x 0.25µm

Compound	RT#1	RT#2	Resp#1	Resp#2	ng/ml	ng/ml
-----						
System Monitoring Compounds						
1) SA Tetrachlo...	4.963	3.956	409723	272274	9.270	8.791
2) SA Decachlor...	10.995	9.253	494405	286538	11.525	8.960

Target Compounds

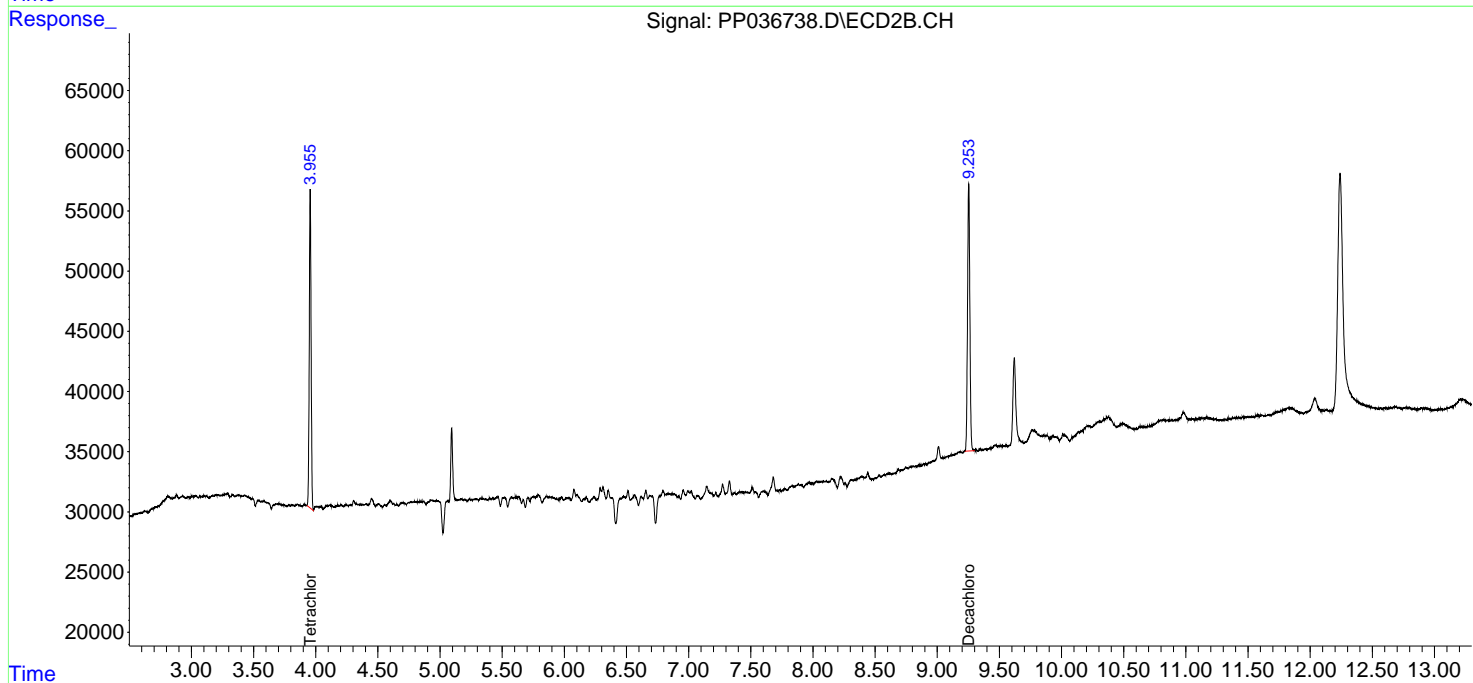
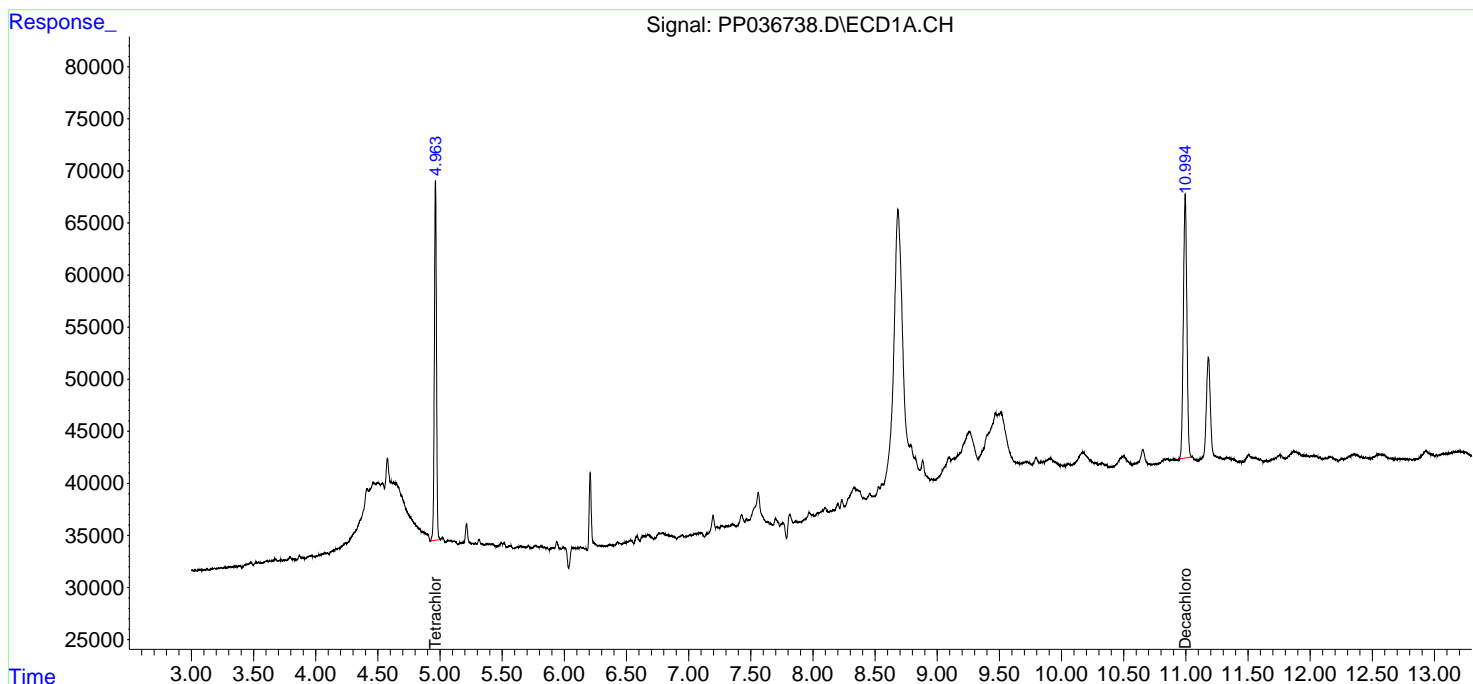
(f)=RT Delta > 1/2 Window (#)=Amounts differ by > 25% (m)=manual int.

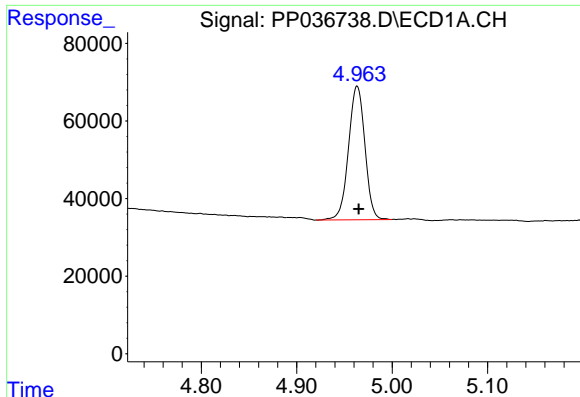
Data Path : Z:\pestpcbsrv\HPCHEM1\ECD\_P\Data\PP062321\  
 Data File : PP036738.D  
 Signal(s) : Signal #1: ECD1A.CH Signal #2: ECD2B.CH  
 Acq On : 23 Jun 2021 14:56  
 Operator : DD\AJ  
 Sample : M2795-05  
 Misc :  
 ALS Vial : 16 Sample Multiplier: 1

Instrument :  
 ECD\_P  
 ClientSampleId :  
 B3-0-2

Integration File signal 1: autoint1.e  
 Integration File signal 2: autoint2.e  
 Quant Time: Jun 24 01:22:34 2021  
 Quant Method : Z:\pestpcbsrv\HPCHEM1\ECD\_P\methods\PP061721.M  
 Quant Title : GC EXTRACTABLES  
 QLast Update : Fri Jun 18 06:06:19 2021  
 Response via : Initial Calibration  
 Integrator: ChemStation 6890 Scale Mode: Small noise peaks clipped

Volume Inj. : 2 µl  
 Signal #1 Phase : ZB-MR1 Signal #2 Phase: ZB-MR2  
 Signal #1 Info : 30Mx0.32mmx 0.50µ Signal #2 Info : 30M x 0.32mm x 0.25µm

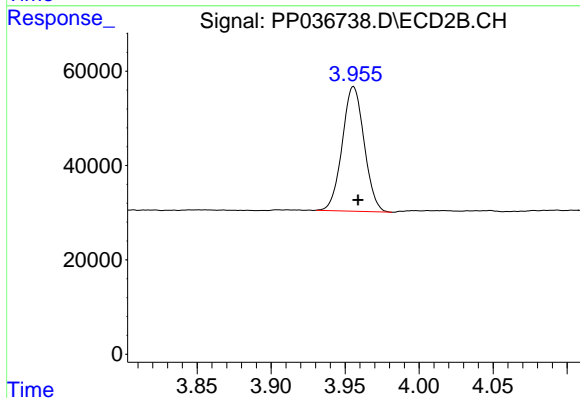




#1 Tetrachloro-m-xylene

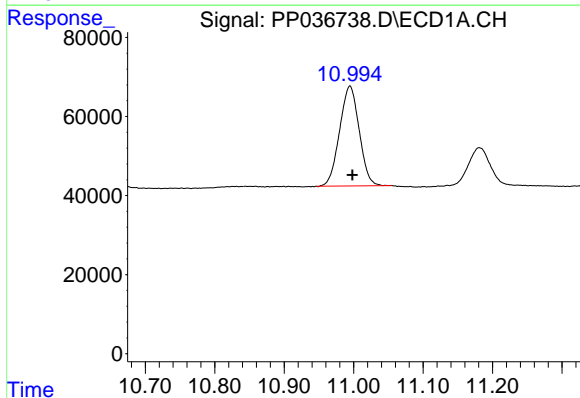
R.T.: 4.963 min  
 Delta R.T.: -0.002 min  
 Response: 409723  
 Conc: 9.27 ng/ml

Instrument :  
 ECD\_P  
 ClientSampled :  
 B3-0-2



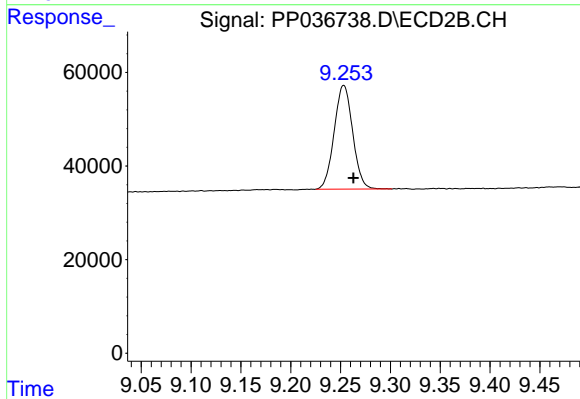
#1 Tetrachloro-m-xylene

R.T.: 3.956 min  
 Delta R.T.: -0.003 min  
 Response: 272274  
 Conc: 8.79 ng/ml



#2 Decachlorobiphenyl

R.T.: 10.995 min  
 Delta R.T.: -0.003 min  
 Response: 494405  
 Conc: 11.53 ng/ml



#2 Decachlorobiphenyl

R.T.: 9.253 min  
 Delta R.T.: -0.010 min  
 Response: 286538  
 Conc: 8.96 ng/ml