

Data Path : Z:\pestpcbsrv\HPCHEM1\ECD_P\Data\PP062325\
 Data File : PP073160.D
 Signal(s) : Signal #1: ECD1A.ch Signal #2: ECD2B.ch
 Acq On : 23 Jun 2025 09:44
 Operator : YP\AJ
 Sample : AR1660CCC500
 Misc :
 ALS Vial : 3 Sample Multiplier: 1

Instrument :
 ECD_P
ClientSampleId :
 AR1660CCC500

Integration File signal 1: autoint1.e
 Integration File signal 2: autoint2.e
 Quant Time: Jun 23 13:49:49 2025
 Quant Method : Z:\pestpcbsrv\HPCHEM1\ECD_P\methods\PP061725.M
 Quant Title : GC EXTRACTABLES
 QLast Update : Wed Jun 18 08:17:15 2025
 Response via : Initial Calibration
 Integrator: ChemStation

Volume Inj. : 2 µl
 Signal #1 Phase : ZB-MR1 Signal #2 Phase: ZB-MR2
 Signal #1 Info : 30Mx0.32mmx 0.50µ Signal #2 Info : 30M x 0.32mm x 0.25µm

Compound	RT#1	RT#2	Resp#1	Resp#2	ng/ml	ng/ml

System Monitoring Compounds						
1) SA Tetrachlo...	4.493	3.788	101.1E6	84449708	47.889	46.870
2) SA Decachlor...	10.182	8.793	87522563	62946616	51.216	47.161
Target Compounds						
3) L1 AR-1016-1	5.644	4.867	33844234	31150324	465.715	453.309
4) L1 AR-1016-2	5.665	4.885	52156163	46528147	501.402	462.329
5) L1 AR-1016-3	5.727	5.062	31977360	25216764	489.337	460.865
6) L1 AR-1016-4	5.825	5.103	26658724	20564386	509.914	461.606
7) L1 AR-1016-5	6.116	5.316	24129463	26005395	482.540	470.411
31) L7 AR-1260-1	7.233	6.347	44978766	44339964	509.886	468.064
32) L7 AR-1260-2	7.486	6.535	69189051	55831045	509.178	479.499
33) L7 AR-1260-3	7.843	6.687	59173913	49325156	518.377	473.547
34) L7 AR-1260-4	8.068	7.157	54997493	41189399	533.720	469.456
35) L7 AR-1260-5	8.386	7.399	125.7E6	100.6E6	522.372	471.481

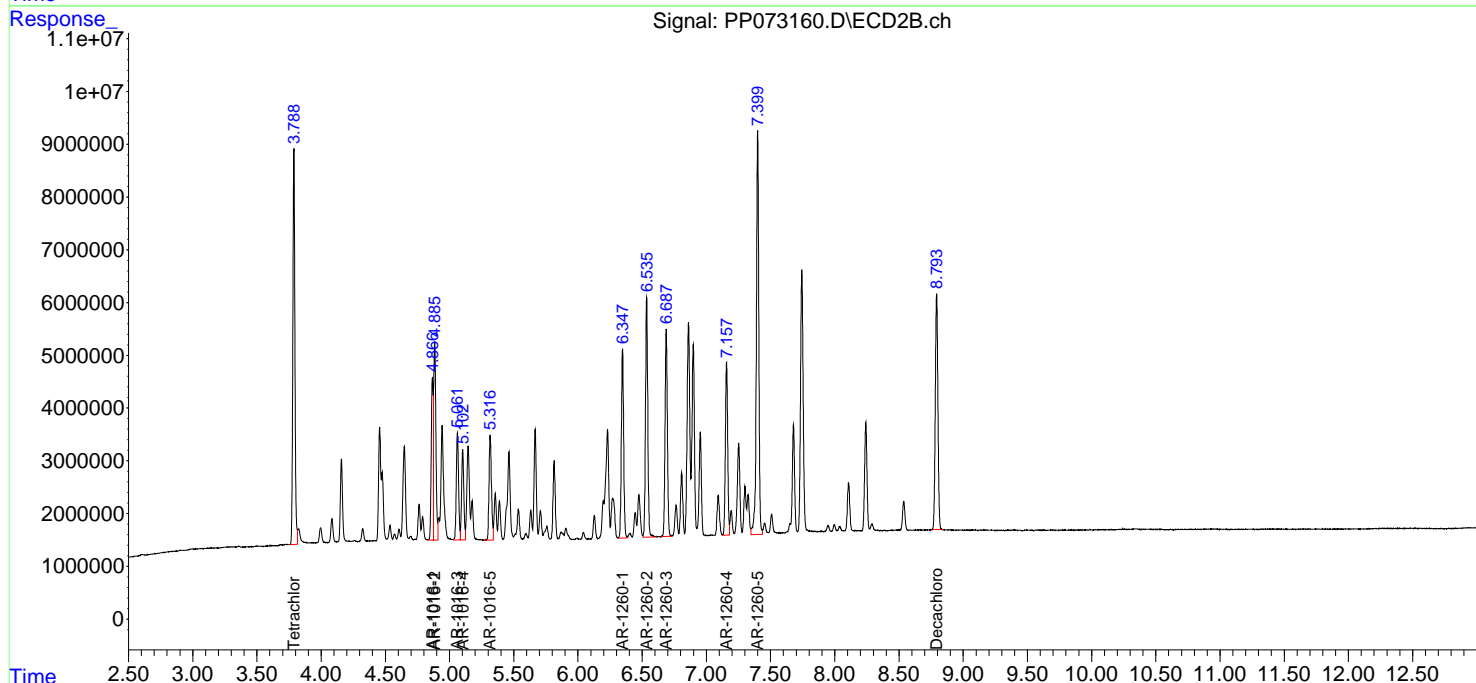
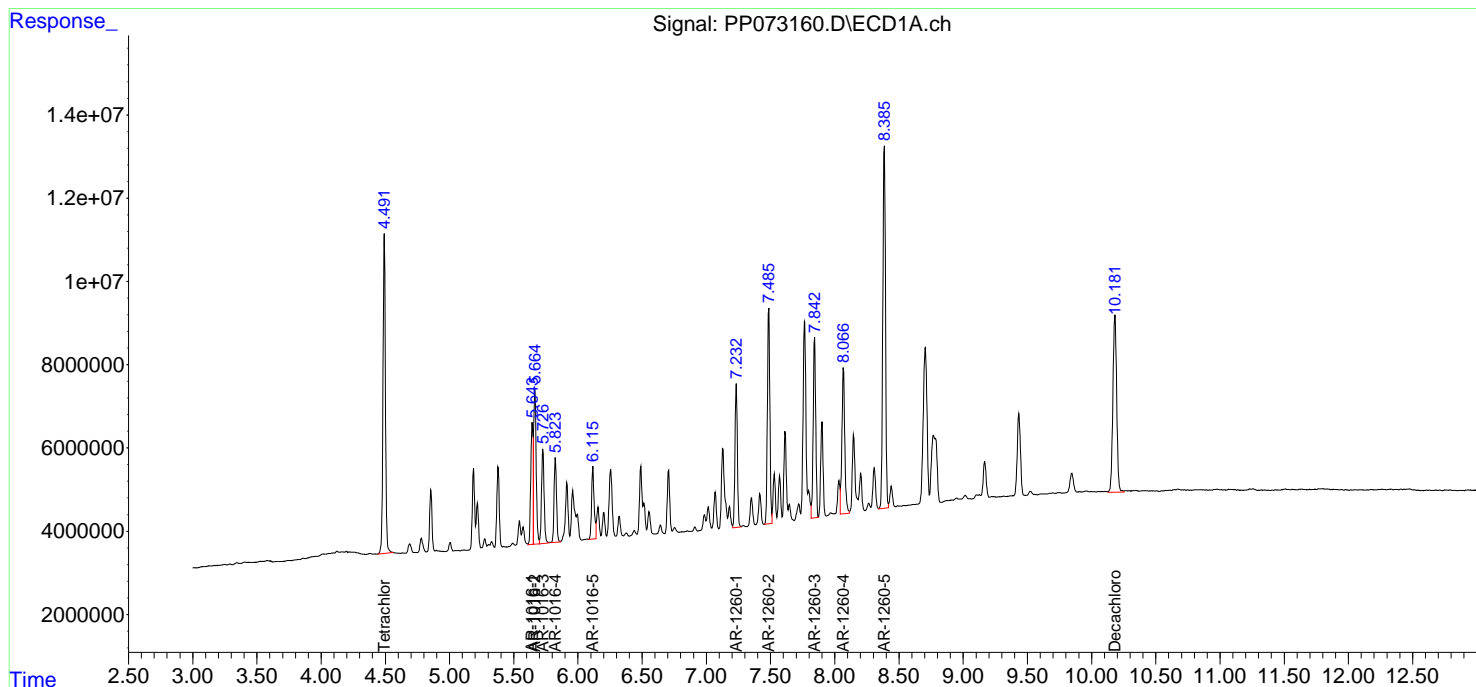
(f)=RT Delta > 1/2 Window (#)=Amounts differ by > 25% (m)=manual int.

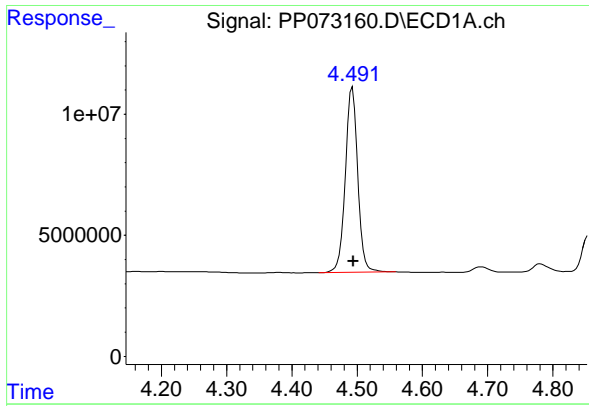
Data Path : Z:\pestpcbsrv\HPCHEM1\ECD_P\Data\PP062325\
 Data File : PP073160.D
 Signal(s) : Signal #1: ECD1A.ch Signal #2: ECD2B.ch
 Acq On : 23 Jun 2025 09:44
 Operator : YP\AJ
 Sample : AR1660CCC500
 Misc :
 ALS Vial : 3 Sample Multiplier: 1

Instrument :
 ECD_P
 ClientSampleId :
 AR1660CCC500

Integration File signal 1: autoint1.e
 Integration File signal 2: autoint2.e
 Quant Time: Jun 23 13:49:49 2025
 Quant Method : Z:\pestpcbsrv\HPCHEM1\ECD_P\methods\PP061725.M
 Quant Title : GC EXTRACTABLES
 QLast Update : Wed Jun 18 08:17:15 2025
 Response via : Initial Calibration
 Integrator: ChemStation

Volume Inj. : 2 µl
 Signal #1 Phase : ZB-MR1 Signal #2 Phase: ZB-MR2
 Signal #1 Info : 30Mx0.32mmx 0.50µm Signal #2 Info : 30M x 0.32mm x 0.25µm

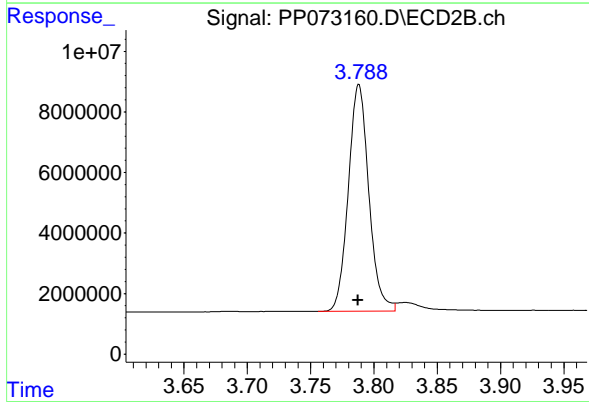




#1 Tetrachloro-m-xylene

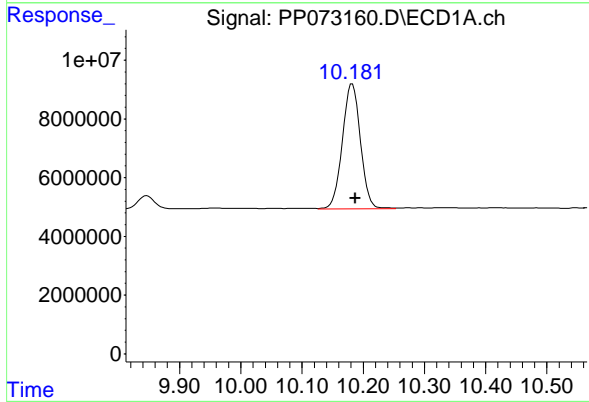
R.T.: 4.493 min
 Delta R.T.: -0.001 min
 Response: 101085261
 Conc: 47.89 ng/ml

Instrument :
 ECD_P
 ClientSampleId :
 AR1660CCC500



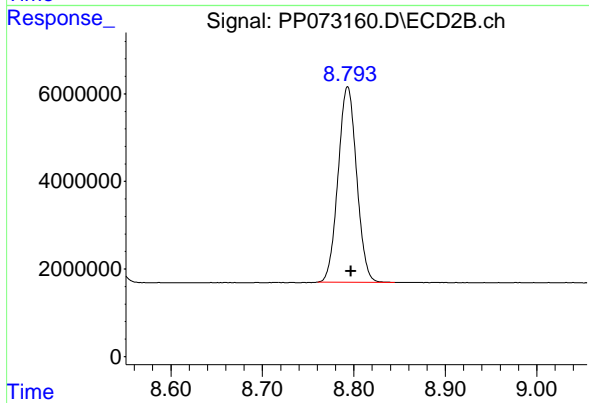
#1 Tetrachloro-m-xylene

R.T.: 3.788 min
 Delta R.T.: 0.000 min
 Response: 84449708
 Conc: 46.87 ng/ml



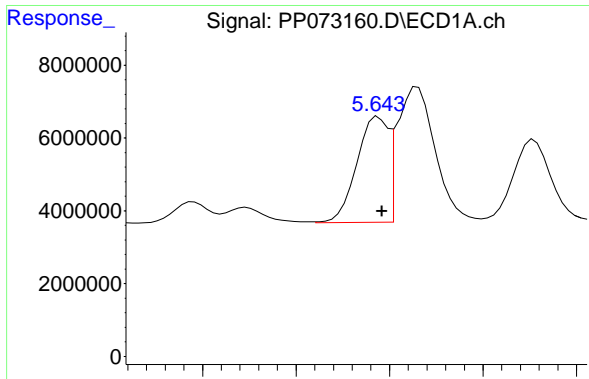
#2 Decachlorobiphenyl

R.T.: 10.182 min
 Delta R.T.: -0.005 min
 Response: 87522563
 Conc: 51.22 ng/ml



#2 Decachlorobiphenyl

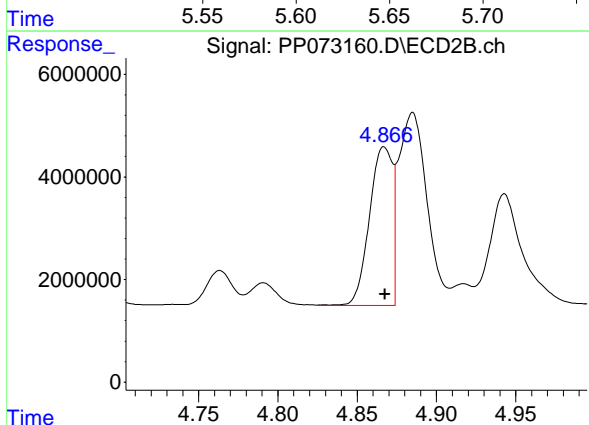
R.T.: 8.793 min
 Delta R.T.: -0.004 min
 Response: 62946616
 Conc: 47.16 ng/ml



#3 AR-1016-1

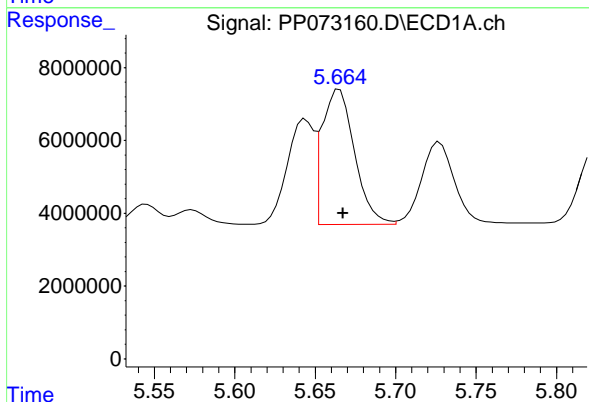
R.T.: 5.644 min
 Delta R.T.: -0.002 min
 Response: 33844234
 Conc: 465.72 ng/ml

Instrument :
 ECD_P
 ClientSampleId :
 AR1660CCC500



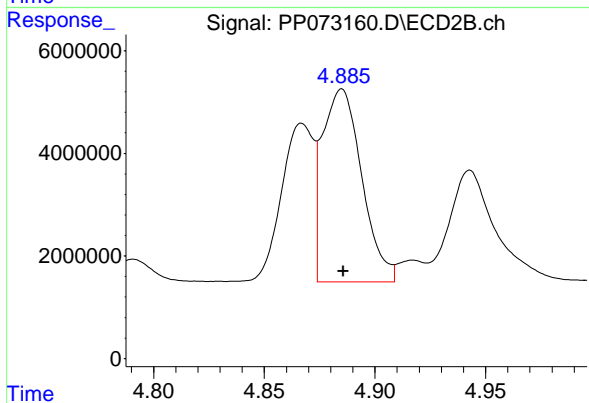
#3 AR-1016-1

R.T.: 4.867 min
 Delta R.T.: 0.000 min
 Response: 31150324
 Conc: 453.31 ng/ml



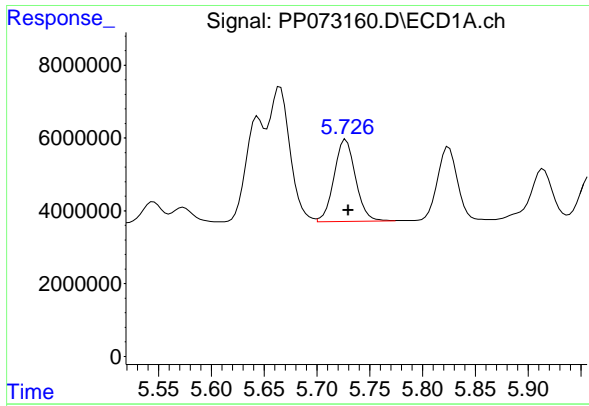
#4 AR-1016-2

R.T.: 5.665 min
 Delta R.T.: -0.002 min
 Response: 52156163
 Conc: 501.40 ng/ml



#4 AR-1016-2

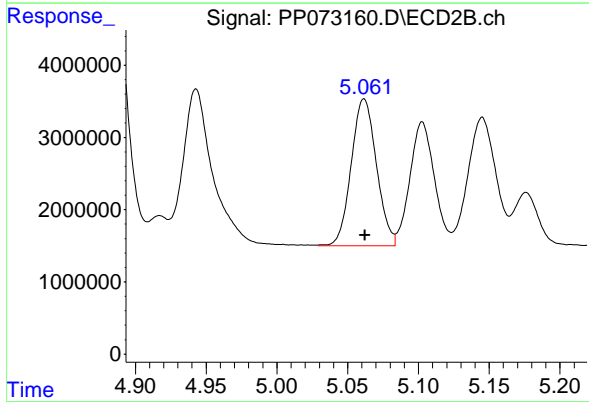
R.T.: 4.885 min
 Delta R.T.: 0.000 min
 Response: 46528147
 Conc: 462.33 ng/ml



#5 AR-1016-3

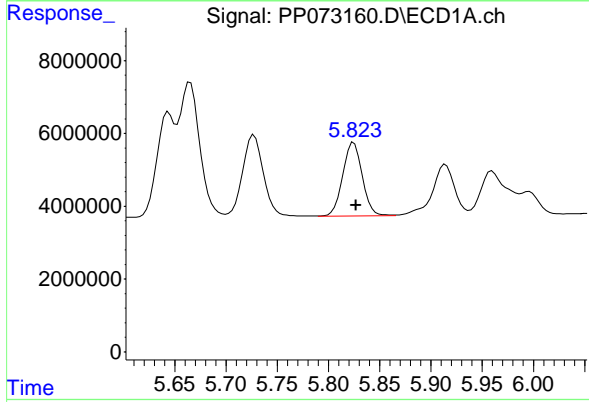
R.T.: 5.727 min
 Delta R.T.: -0.002 min
 Response: 31977360
 Conc: 489.34 ng/ml

Instrument :
 ECD_P
 ClientSampleId :
 AR1660CCC500



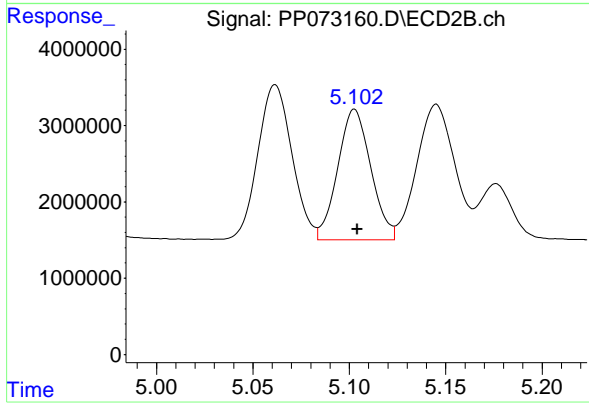
#5 AR-1016-3

R.T.: 5.062 min
 Delta R.T.: 0.000 min
 Response: 25216764
 Conc: 460.86 ng/ml



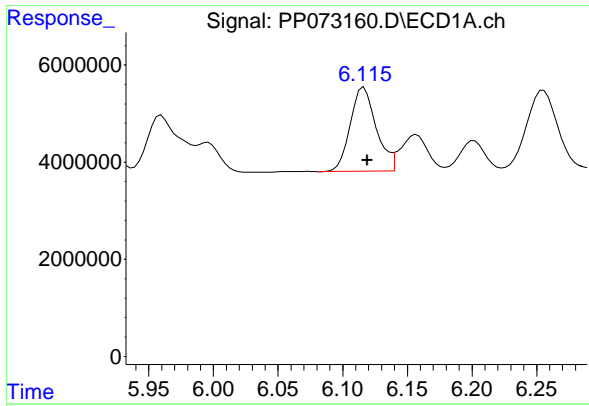
#6 AR-1016-4

R.T.: 5.825 min
 Delta R.T.: -0.002 min
 Response: 26658724
 Conc: 509.91 ng/ml



#6 AR-1016-4

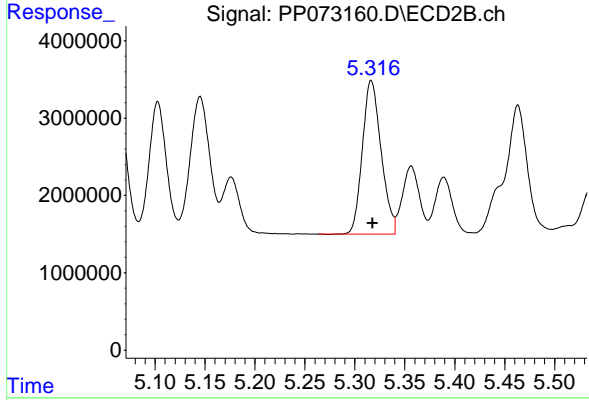
R.T.: 5.103 min
 Delta R.T.: -0.002 min
 Response: 20564386
 Conc: 461.61 ng/ml



#7 AR-1016-5

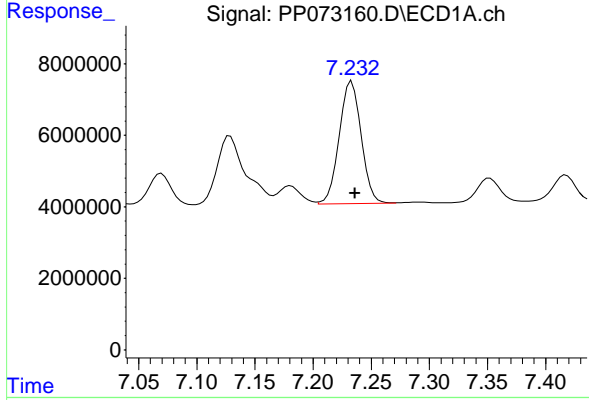
R.T.: 6.116 min
 Delta R.T.: -0.003 min
 Response: 24129463
 Conc: 482.54 ng/ml

Instrument :
 ECD_P
 ClientSampleId :
 AR1660CCC500



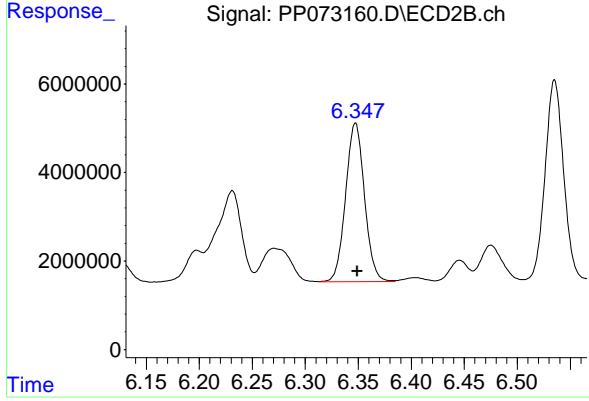
#7 AR-1016-5

R.T.: 5.316 min
 Delta R.T.: -0.001 min
 Response: 26005395
 Conc: 470.41 ng/ml



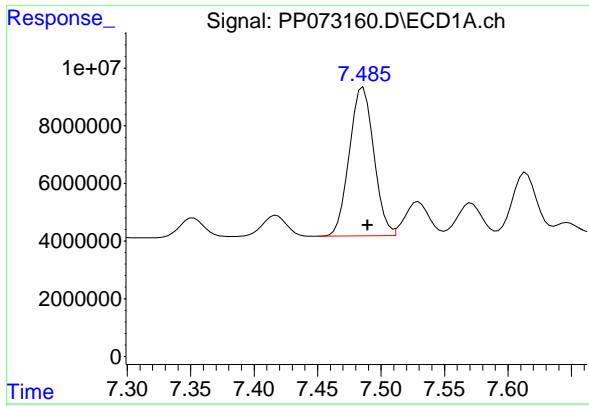
#31 AR-1260-1

R.T.: 7.233 min
 Delta R.T.: -0.003 min
 Response: 44978766
 Conc: 509.89 ng/ml



#31 AR-1260-1

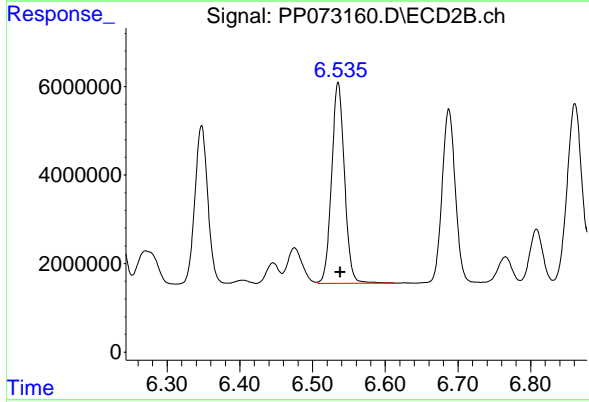
R.T.: 6.347 min
 Delta R.T.: -0.002 min
 Response: 44339964
 Conc: 468.06 ng/ml



#32 AR-1260-2

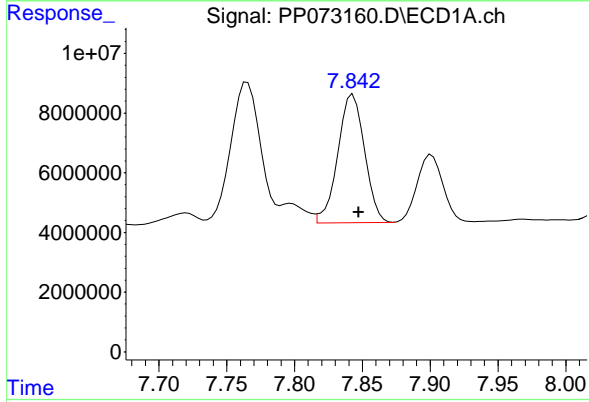
R.T.: 7.486 min
 Delta R.T.: -0.003 min
 Response: 69189051
 Conc: 509.18 ng/ml

Instrument :
 ECD_P
 ClientSampleId :
 AR1660CCC500



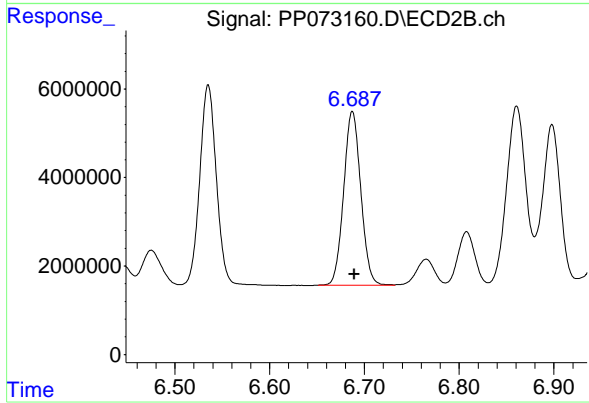
#32 AR-1260-2

R.T.: 6.535 min
 Delta R.T.: -0.003 min
 Response: 55831045
 Conc: 479.50 ng/ml



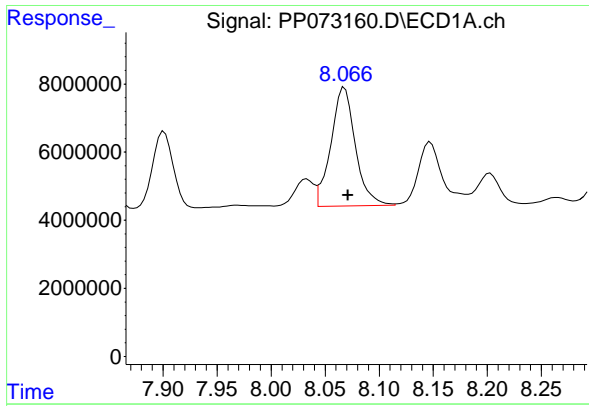
#33 AR-1260-3

R.T.: 7.843 min
 Delta R.T.: -0.004 min
 Response: 59173913
 Conc: 518.38 ng/ml



#33 AR-1260-3

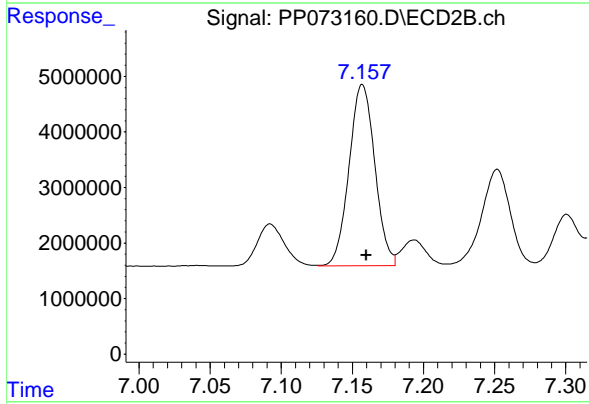
R.T.: 6.687 min
 Delta R.T.: -0.002 min
 Response: 49325156
 Conc: 473.55 ng/ml



#34 AR-1260-4

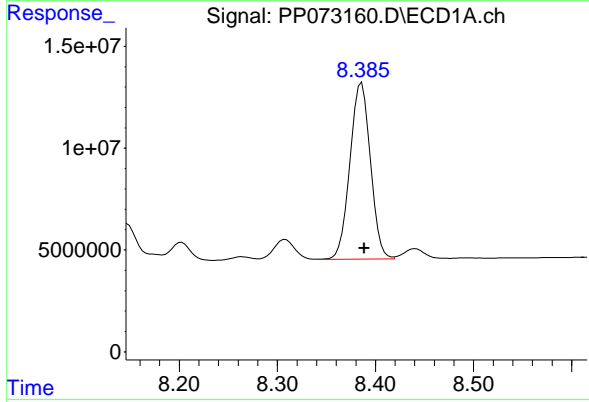
R.T.: 8.068 min
 Delta R.T.: -0.003 min
 Response: 54997493
 Conc: 533.72 ng/ml

Instrument :
 ECD_P
 ClientSampleId :
 AR1660CCC500



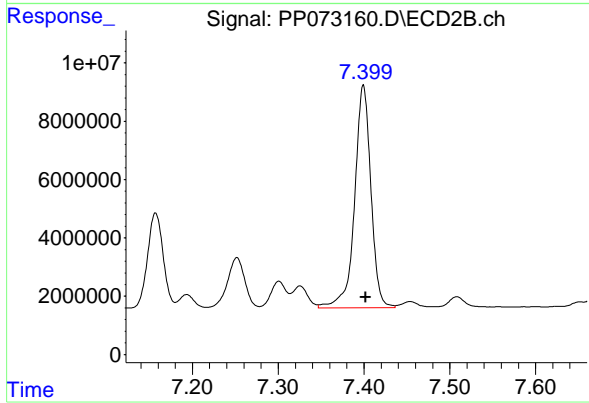
#34 AR-1260-4

R.T.: 7.157 min
 Delta R.T.: -0.003 min
 Response: 41189399
 Conc: 469.46 ng/ml



#35 AR-1260-5

R.T.: 8.386 min
 Delta R.T.: -0.002 min
 Response: 125694410
 Conc: 522.37 ng/ml



#35 AR-1260-5

R.T.: 7.399 min
 Delta R.T.: -0.003 min
 Response: 100614149
 Conc: 471.48 ng/ml