

Data Path : Z:\pestpcbsrv\HPCHEM1\ECD\_P\Data\PP062325\  
 Data File : PP073161.D  
 Signal(s) : Signal #1: ECD1A.ch Signal #2: ECD2B.ch  
 Acq On : 23 Jun 2025 10:26  
 Operator : YP\AJ  
 Sample : AR1242CCC500  
 Misc :  
 ALS Vial : 4 Sample Multiplier: 1

Instrument :  
 ECD\_P  
 ClientSampleId :  
 AR1242CCC500

Integration File signal 1: autoint1.e  
 Integration File signal 2: autoint2.e  
 Quant Time: Jun 23 13:50:27 2025  
 Quant Method : Z:\pestpcbsrv\HPCHEM1\ECD\_P\methods\PP061725.M  
 Quant Title : GC EXTRACTABLES  
 QLast Update : Wed Jun 18 08:17:15 2025  
 Response via : Initial Calibration  
 Integrator: ChemStation

Volume Inj. : 2 µl  
 Signal #1 Phase : ZB-MR1 Signal #2 Phase: ZB-MR2  
 Signal #1 Info : 30Mx0.32mmx 0.50µ Signal #2 Info : 30M x 0.32mm x 0.25µm

Compound	RT#1	RT#2	Resp#1	Resp#2	ng/ml	ng/ml
-----						
System Monitoring Compounds						
1) SA Tetrachlo...	4.505	3.789	102.0E6	79190248	48.301	43.951
2) SA Decachlor...	10.203	8.800	88314518	62369846	51.679	46.729
Target Compounds						
16) L4 AR-1242-1	5.658	4.870	28852176	25850835	493.729	468.151
17) L4 AR-1242-2	5.678	4.888	41054383	37348037	474.319m	469.867
18) L4 AR-1242-3	5.741	5.065	26366502	20275322	500.240	468.198
19) L4 AR-1242-4	5.838	5.149	22293612	19641181	507.155	473.238
20) L4 AR-1242-5	6.568	5.671	24309967	24949509	490.519	474.447
-----						

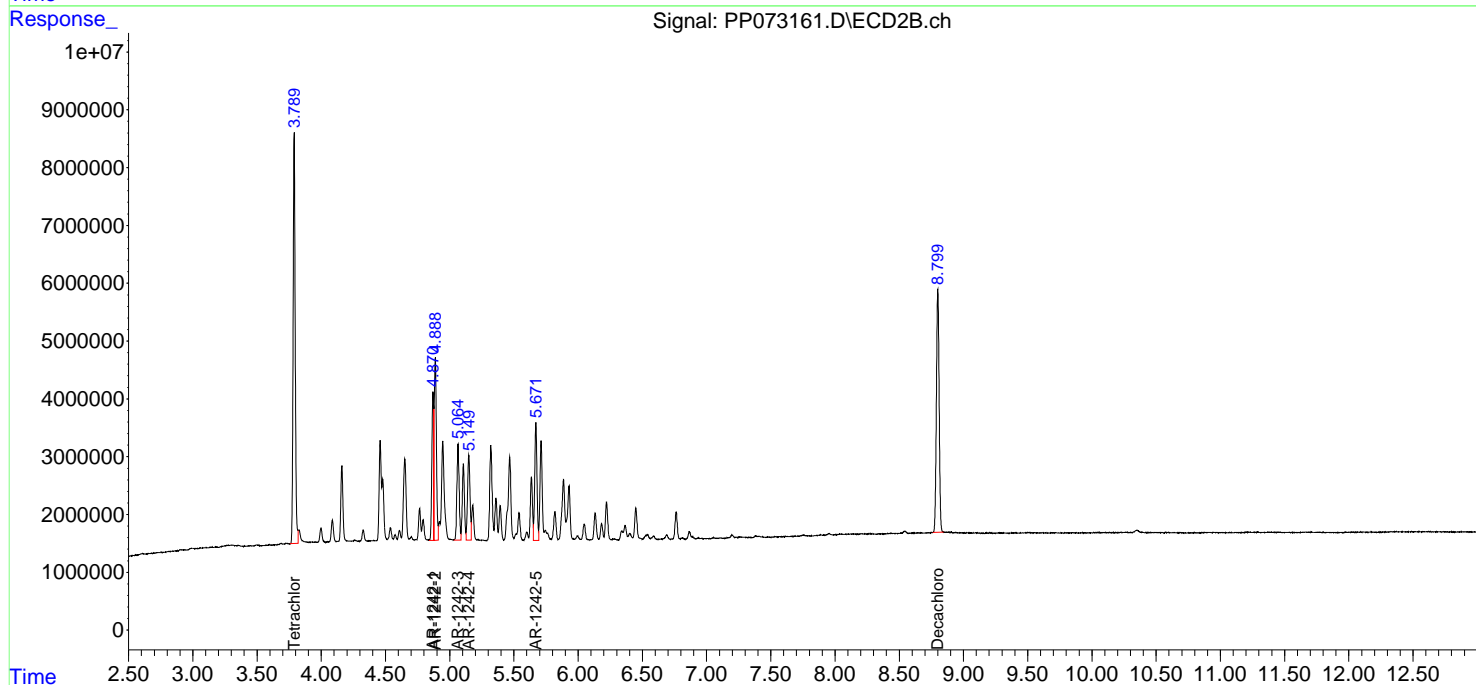
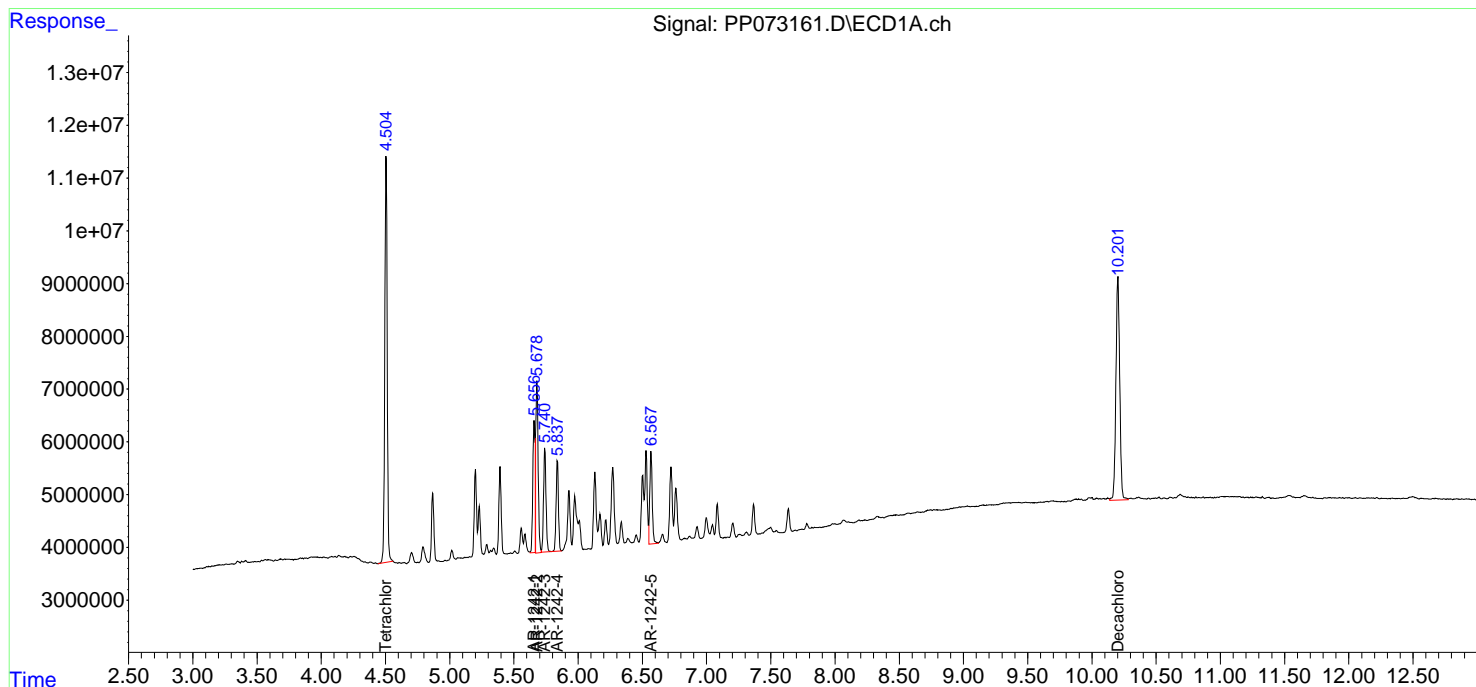
(f)=RT Delta > 1/2 Window (#)=Amounts differ by > 25% (m)=manual int.

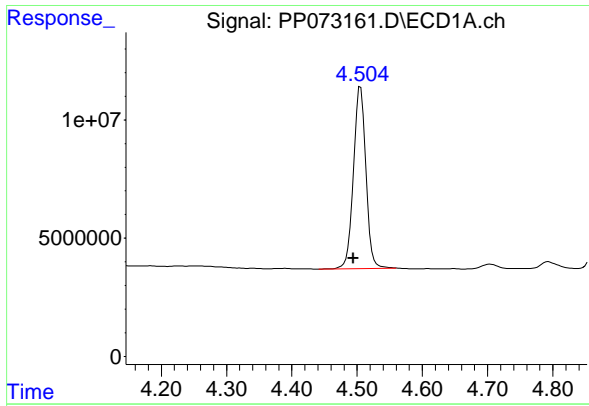
Data Path : Z:\pestpcbsrv\HPCHEM1\ECD\_P\Data\PP062325\  
 Data File : PP073161.D  
 Signal(s) : Signal #1: ECD1A.ch Signal #2: ECD2B.ch  
 Acq On : 23 Jun 2025 10:26  
 Operator : YP\AJ  
 Sample : AR1242CCC500  
 Misc :  
 ALS Vial : 4 Sample Multiplier: 1

Instrument :  
 ECD\_P  
 ClientSampleId :  
 AR1242CCC500

Integration File signal 1: autoint1.e  
 Integration File signal 2: autoint2.e  
 Quant Time: Jun 23 13:50:27 2025  
 Quant Method : Z:\pestpcbsrv\HPCHEM1\ECD\_P\methods\PP061725.M  
 Quant Title : GC EXTRACTABLES  
 QLast Update : Wed Jun 18 08:17:15 2025  
 Response via : Initial Calibration  
 Integrator: ChemStation

Volume Inj. : 2 µl  
 Signal #1 Phase : ZB-MR1 Signal #2 Phase: ZB-MR2  
 Signal #1 Info : 30Mx0.32mmx 0.50µ Signal #2 Info : 30M x 0.32mm x 0.25µm

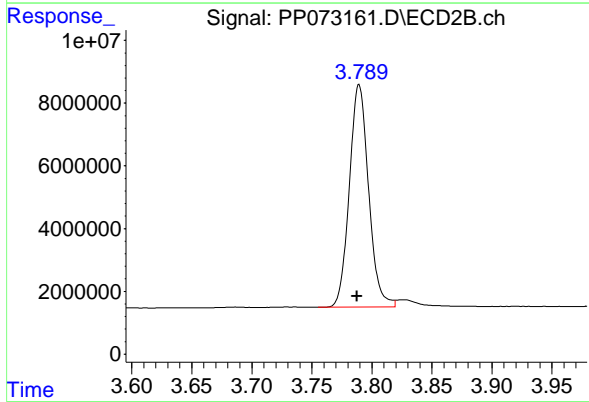




#1 Tetrachloro-m-xylene

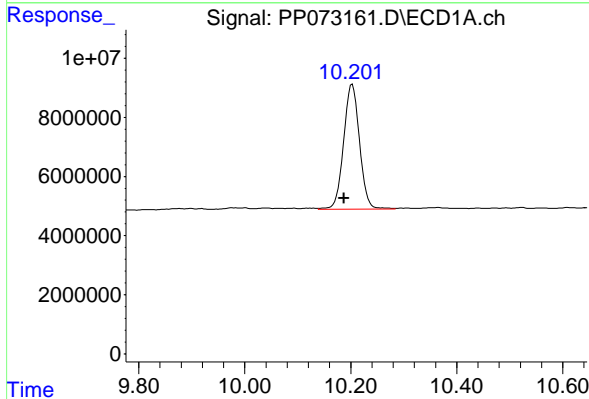
R.T.: 4.505 min  
 Delta R.T.: 0.011 min  
 Response: 101954872  
 Conc: 48.30 ng/ml

Instrument : ECD\_P  
 ClientSampleId : AR1242CCC500



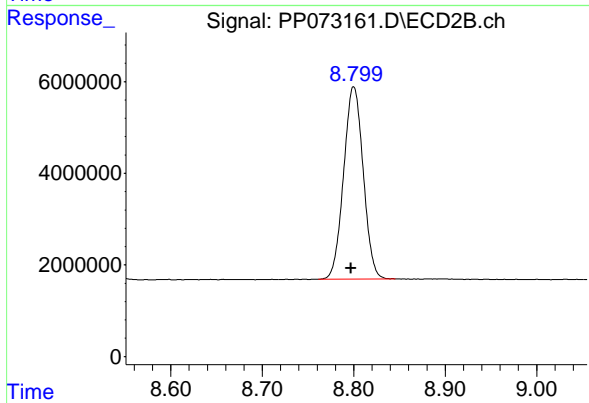
#1 Tetrachloro-m-xylene

R.T.: 3.789 min  
 Delta R.T.: 0.002 min  
 Response: 79190248  
 Conc: 43.95 ng/ml



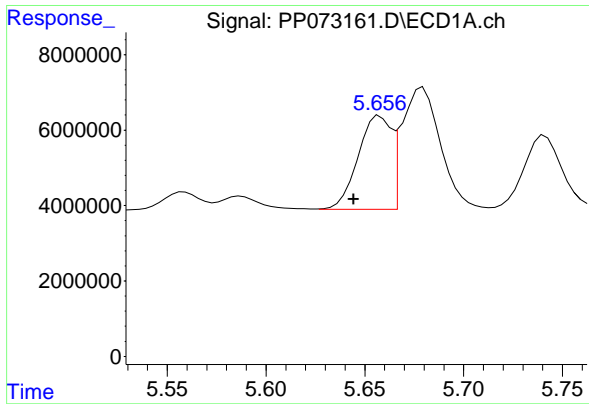
#2 Decachlorobiphenyl

R.T.: 10.203 min  
 Delta R.T.: 0.016 min  
 Response: 88314518  
 Conc: 51.68 ng/ml



#2 Decachlorobiphenyl

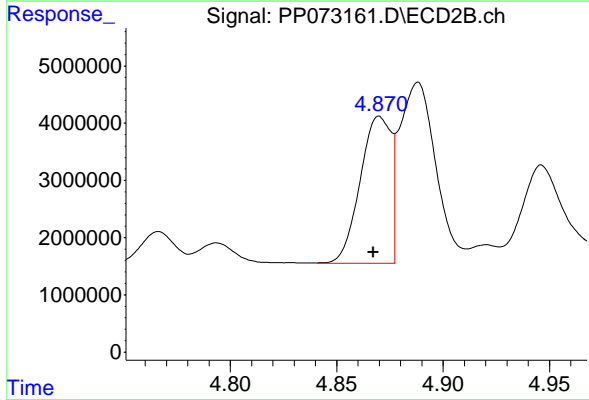
R.T.: 8.800 min  
 Delta R.T.: 0.003 min  
 Response: 62369846  
 Conc: 46.73 ng/ml



#16 AR-1242-1

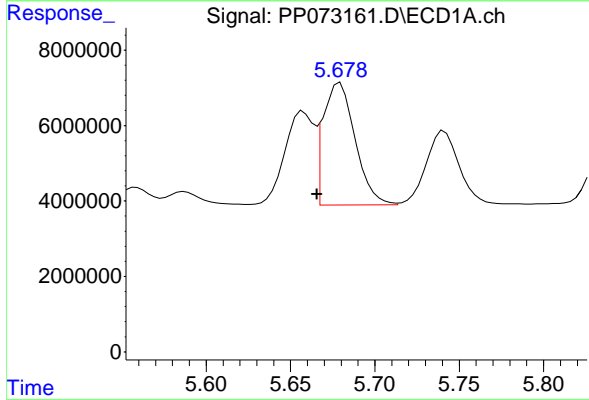
R.T.: 5.658 min  
 Delta R.T.: 0.013 min  
 Response: 28852176  
 Conc: 493.73 ng/ml

Instrument :  
 ECD\_P  
 ClientSampleId :  
 AR1242CCC500



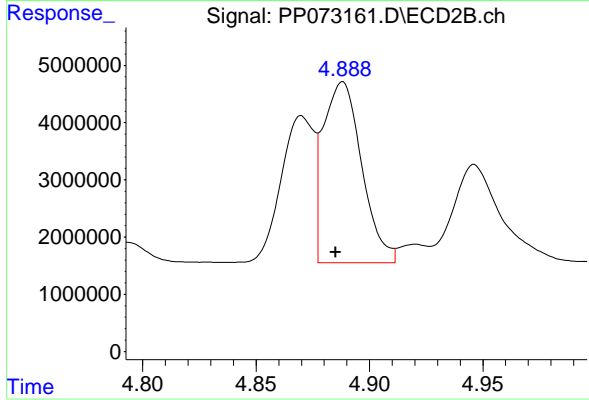
#16 AR-1242-1

R.T.: 4.870 min  
 Delta R.T.: 0.003 min  
 Response: 25850835  
 Conc: 468.15 ng/ml



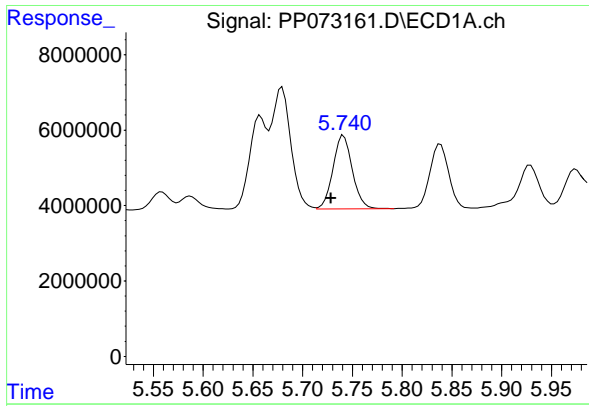
#17 AR-1242-2

R.T.: 5.678 min  
 Delta R.T.: 0.012 min  
 Response: 41054383  
 Conc: 474.32 ng/ml m



#17 AR-1242-2

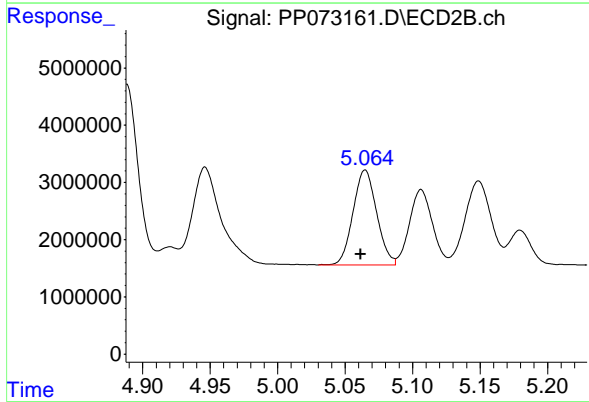
R.T.: 4.888 min  
 Delta R.T.: 0.003 min  
 Response: 37348037  
 Conc: 469.87 ng/ml



#18 AR-1242-3

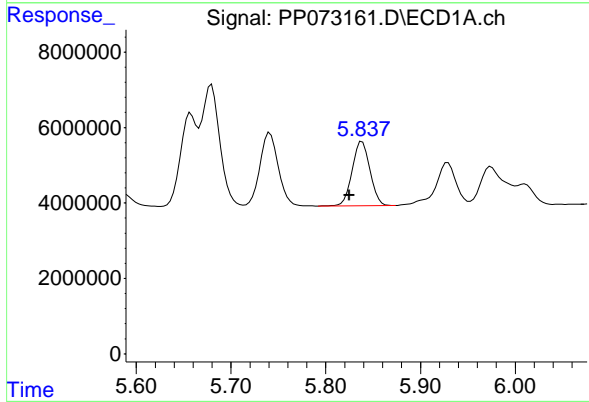
R.T.: 5.741 min  
 Delta R.T.: 0.013 min  
 Response: 26366502  
 Conc: 500.24 ng/ml

Instrument : ECD\_P  
 ClientSampleId : AR1242CCC500



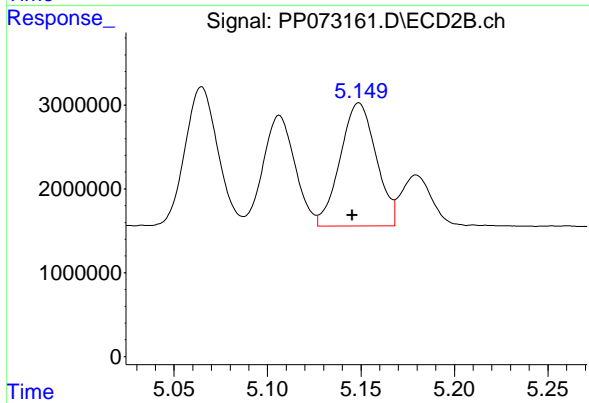
#18 AR-1242-3

R.T.: 5.065 min  
 Delta R.T.: 0.003 min  
 Response: 20275322  
 Conc: 468.20 ng/ml



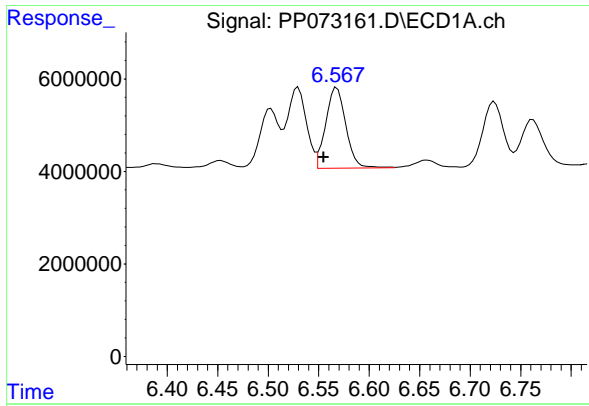
#19 AR-1242-4

R.T.: 5.838 min  
 Delta R.T.: 0.013 min  
 Response: 22293612  
 Conc: 507.15 ng/ml



#19 AR-1242-4

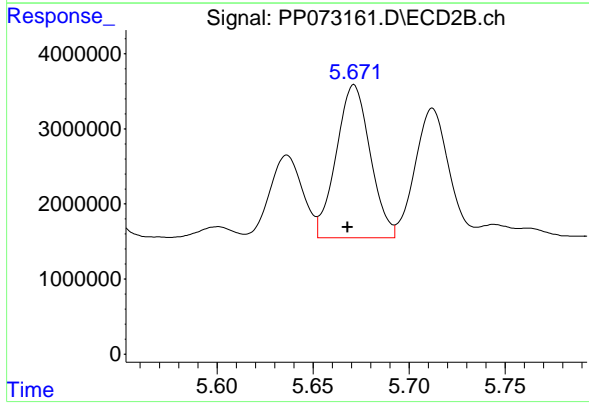
R.T.: 5.149 min  
 Delta R.T.: 0.004 min  
 Response: 19641181  
 Conc: 473.24 ng/ml



#20 AR-1242-5

R.T.: 6.568 min  
 Delta R.T.: 0.013 min  
 Response: 24309967  
 Conc: 490.52 ng/ml

Instrument :  
 ECD\_P  
 ClientSampleId :  
 AR1242CCC500



#20 AR-1242-5

R.T.: 5.671 min  
 Delta R.T.: 0.003 min  
 Response: 24949509  
 Conc: 474.45 ng/ml