

Data Path : Z:\pestpcbsrv\HPCHEM1\ECD_P\Data\PP062325\
 Data File : PP073166.D
 Signal(s) : Signal #1: ECD1A.ch Signal #2: ECD2B.ch
 Acq On : 23 Jun 2025 12:56
 Operator : YP\AJ
 Sample : PB168579BS
 Misc :
 ALS Vial : 8 Sample Multiplier: 1

Instrument :
 ECD_P
ClientSampleId :
 PB168579BS

Manual Integrations
APPROVED

Reviewed By :Yogesh Patel 06/24/2025
 Supervised By :mohammad ahmed 06/25/2025

Integration File signal 1: autoint1.e
 Integration File signal 2: autoint2.e
 Quant Time: Jun 23 13:53:36 2025
 Quant Method : Z:\pestpcbsrv\HPCHEM1\ECD_P\methods\PP061725.M
 Quant Title : GC EXTRACTABLES
 QLast Update : Wed Jun 18 08:17:15 2025
 Response via : Initial Calibration
 Integrator: ChemStation

Volume Inj. : 2 µl
 Signal #1 Phase : ZB-MR1 Signal #2 Phase: ZB-MR2
 Signal #1 Info : 30Mx0.32mmx 0.50µ Signal #2 Info : 30M x 0.32mm x 0.25µm

Compound	RT#1	RT#2	Resp#1	Resp#2	ng/ml	ng/ml

System Monitoring Compounds						
1) SA Tetrachlo...	4.491	3.786	42977242	33396608	20.361	18.535
2) SA Decachlor...	10.180	8.791	37084613	28439121	21.701	21.307m
Target Compounds						
3) L1 AR-1016-1	5.642	4.865	34344887	29888533	472.604	434.947
4) L1 AR-1016-2	5.664	4.883	51627209	44035541	496.317	437.562
5) L1 AR-1016-3	5.725	5.059	32115176	24120882	491.446	440.836
6) L1 AR-1016-4	5.823	5.101	27267536	19504511	521.559	437.815
7) L1 AR-1016-5	6.115	5.315	23854018	24588635	477.032	444.783
31) L7 AR-1260-1	7.231	6.345	48117884	44069209	545.472	465.206
32) L7 AR-1260-2	7.484	6.534	73468490	53909890	540.672	462.999
33) L7 AR-1260-3	7.843	6.686	52508465	48344208	459.986	464.129
34) L7 AR-1260-4	8.066	7.155	51451461	36408704	499.308	414.968
35) L7 AR-1260-5	8.385	7.398	112.4E6	88157241	467.119	413.107

(f)=RT Delta > 1/2 Window (#)=Amounts differ by > 25% (m)=manual int.

Data Path : Z:\pestpcbsrv\HPCHEM1\ECD_P\Data\PP062325\
 Data File : PP073166.D
 Signal(s) : Signal #1: ECD1A.ch Signal #2: ECD2B.ch
 Acq On : 23 Jun 2025 12:56
 Operator : YP\AJ
 Sample : PB168579BS
 Misc :
 ALS Vial : 8 Sample Multiplier: 1

Instrument :

ECD_P

ClientSampleId :

PB168579BS

Manual Integrations

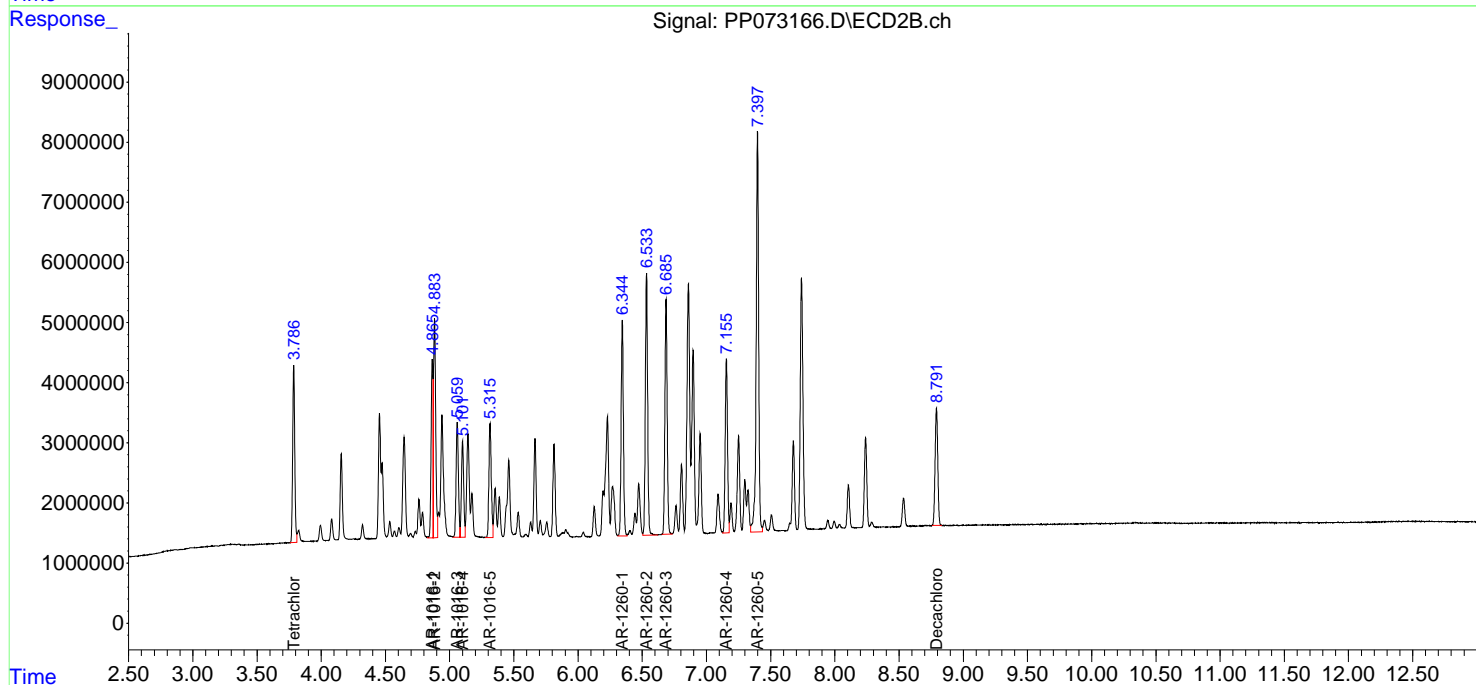
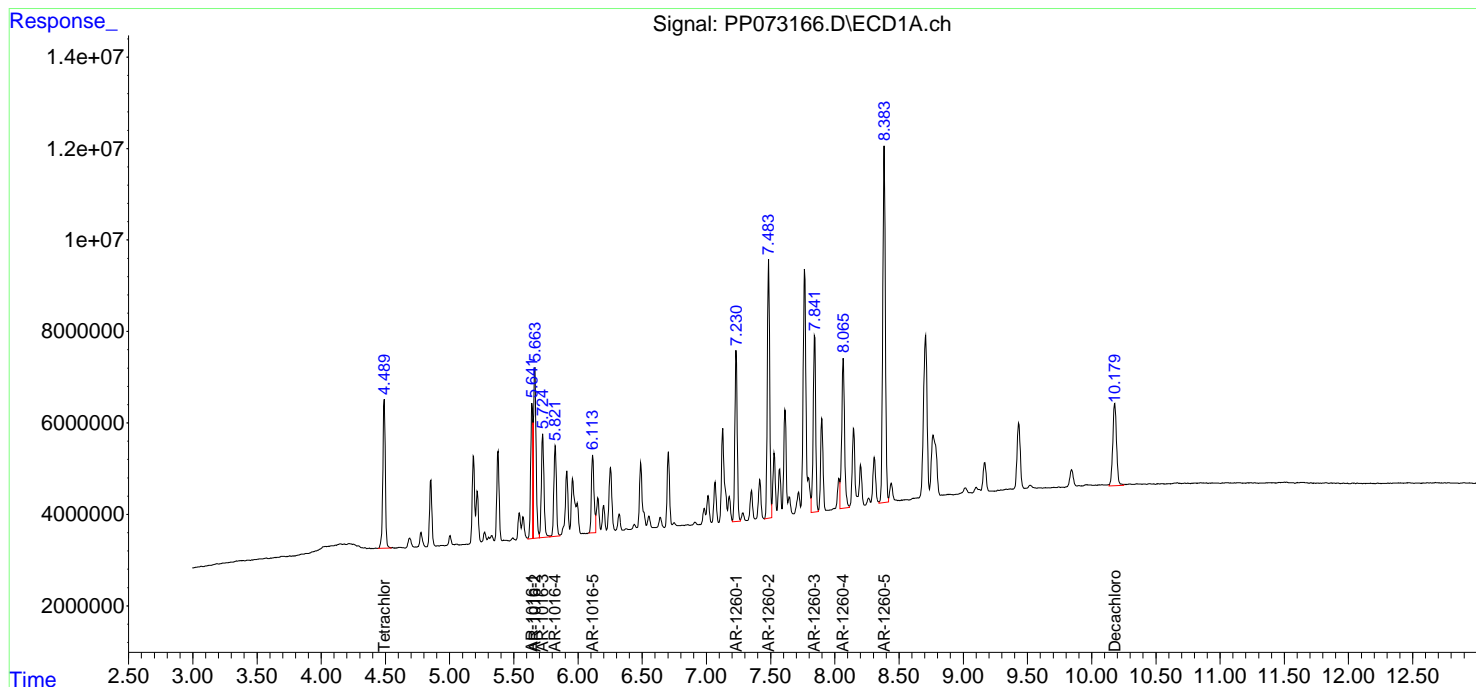
APPROVED

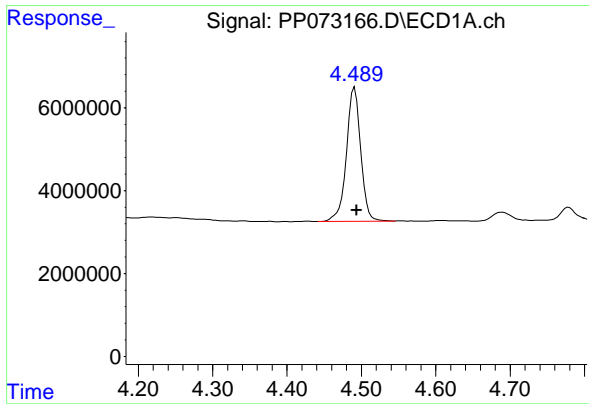
Reviewed By :Yogesh Patel 06/24/2025

Supervised By :mohammad ahmed 06/25/2025

Integration File signal 1: autoint1.e
 Integration File signal 2: autoint2.e
 Quant Time: Jun 23 13:53:36 2025
 Quant Method : Z:\pestpcbsrv\HPCHEM1\ECD_P\methods\PP061725.M
 Quant Title : GC EXTRACTABLES
 QLast Update : Wed Jun 18 08:17:15 2025
 Response via : Initial Calibration
 Integrator: ChemStation

Volume Inj. : 2 µl
 Signal #1 Phase : ZB-MR1 Signal #2 Phase: ZB-MR2
 Signal #1 Info : 30Mx0.32mmx 0.50µm Signal #2 Info : 30M x 0.32mm x 0.25µm





#1 Tetrachloro-m-xylene

R.T.: 4.491 min
 Delta R.T.: -0.003 min
 Response: 42977242
 Conc: 20.36 ng/ml

Instrument :

ECD_P

Client Sample Id :

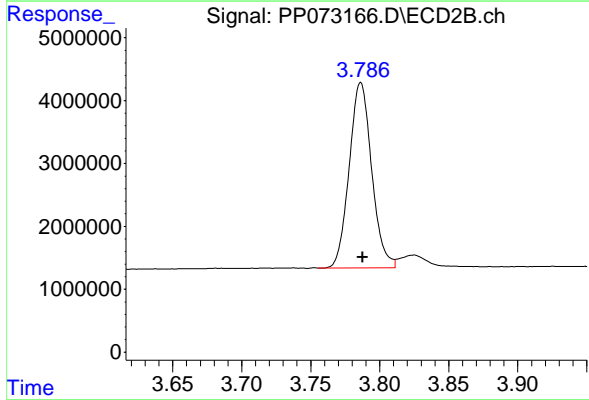
PB168579BS

Manual Integrations

APPROVED

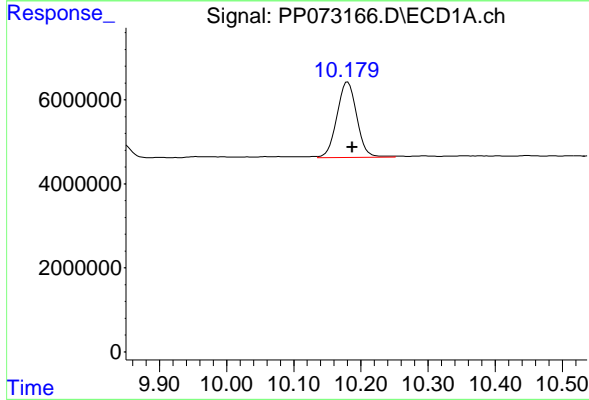
Reviewed By :Yogesh Patel 06/24/2025

Supervised By :mohammad ahmed 06/25/2025



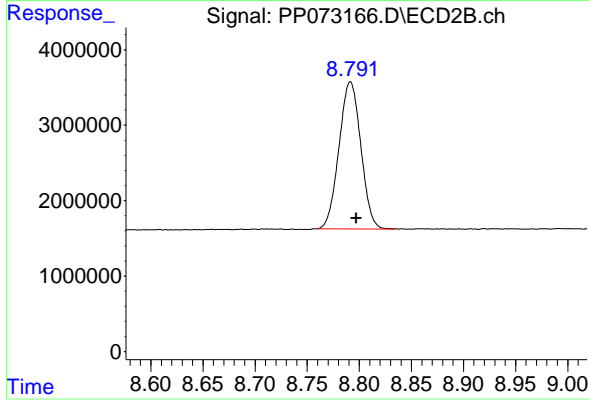
#1 Tetrachloro-m-xylene

R.T.: 3.786 min
 Delta R.T.: -0.001 min
 Response: 33396608
 Conc: 18.54 ng/ml



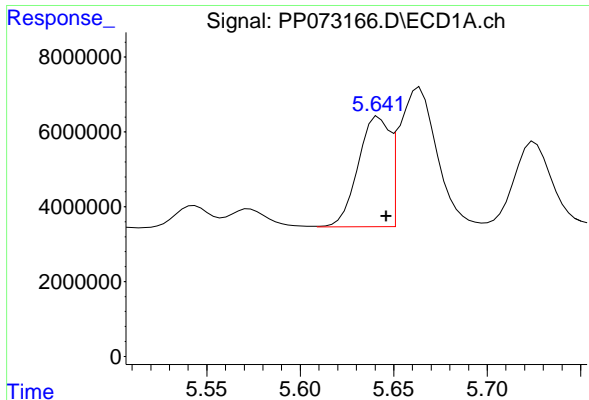
#2 Decachlorobiphenyl

R.T.: 10.180 min
 Delta R.T.: -0.007 min
 Response: 37084613
 Conc: 21.70 ng/ml



#2 Decachlorobiphenyl

R.T.: 8.791 min
 Delta R.T.: -0.006 min
 Response: 28439121
 Conc: 21.31 ng/ml m



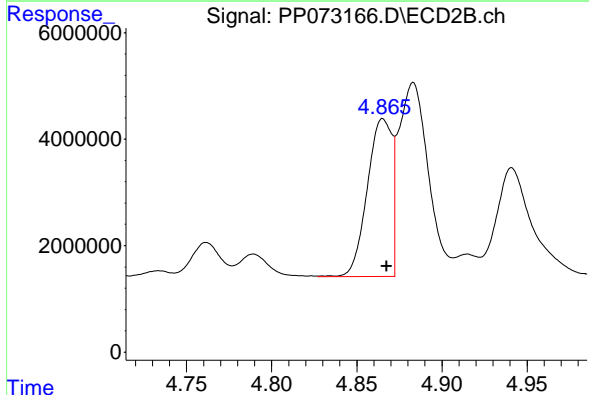
#3 AR-1016-1

R.T.: 5.642 min
 Delta R.T.: -0.004 min
 Response: 34344887
 Conc: 472.60 ng/ml

Instrument : ECD_P
 Client Sample Id : PB168579BS

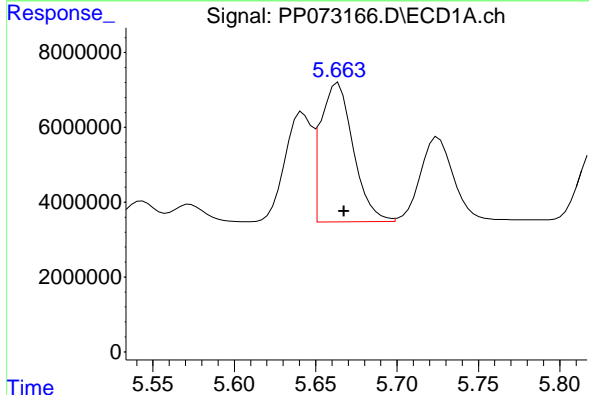
Manual Integrations
 APPROVED

Reviewed By :Yogesh Patel 06/24/2025
 Supervised By :mohammad ahmed 06/25/2025



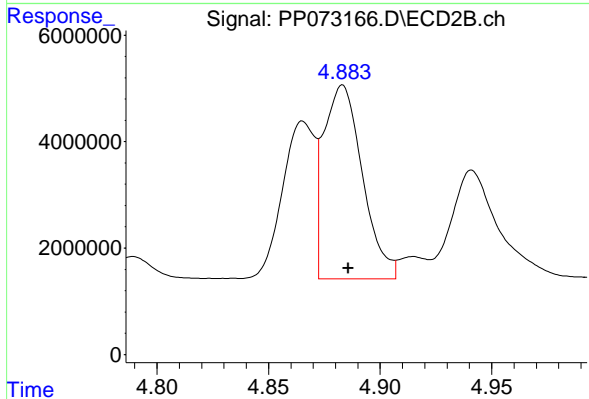
#3 AR-1016-1

R.T.: 4.865 min
 Delta R.T.: -0.002 min
 Response: 29888533
 Conc: 434.95 ng/ml



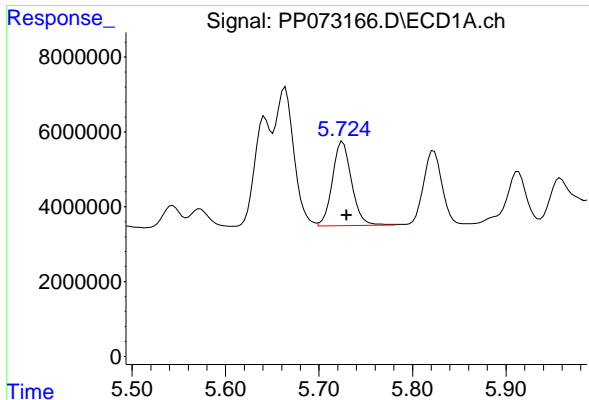
#4 AR-1016-2

R.T.: 5.664 min
 Delta R.T.: -0.003 min
 Response: 51627209
 Conc: 496.32 ng/ml



#4 AR-1016-2

R.T.: 4.883 min
 Delta R.T.: -0.003 min
 Response: 44035541
 Conc: 437.56 ng/ml



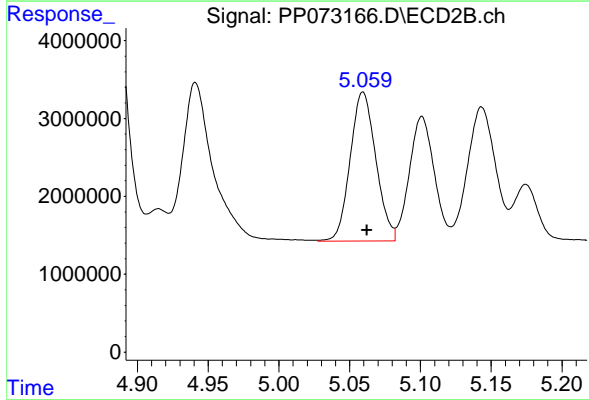
#5 AR-1016-3

R.T.: 5.725 min
 Delta R.T.: -0.004 min
 Response: 32115176
 Conc: 491.45 ng/ml

Instrument :
 ECD_P
 Client Sample Id :
 PB168579BS

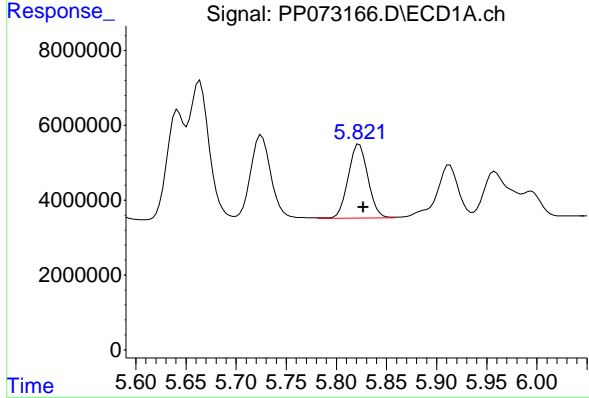
Manual Integrations
 APPROVED

Reviewed By :Yogesh Patel 06/24/2025
 Supervised By :mohammad ahmed 06/25/2025



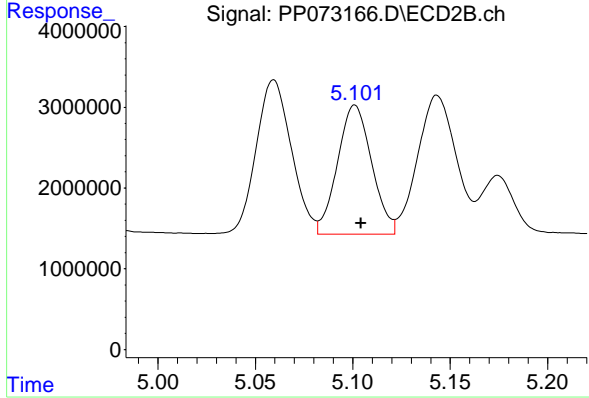
#5 AR-1016-3

R.T.: 5.059 min
 Delta R.T.: -0.003 min
 Response: 24120882
 Conc: 440.84 ng/ml



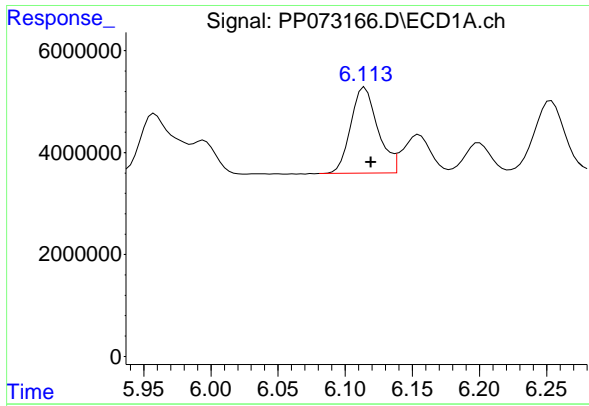
#6 AR-1016-4

R.T.: 5.823 min
 Delta R.T.: -0.004 min
 Response: 27267536
 Conc: 521.56 ng/ml



#6 AR-1016-4

R.T.: 5.101 min
 Delta R.T.: -0.003 min
 Response: 19504511
 Conc: 437.82 ng/ml



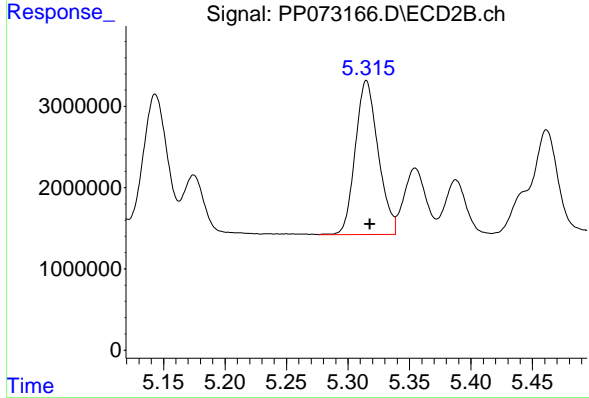
#7 AR-1016-5

R.T.: 6.115 min
 Delta R.T.: -0.005 min
 Response: 23854018
 Conc: 477.03 ng/ml

Instrument :
 ECD_P
 Client Sample Id :
 PB168579BS

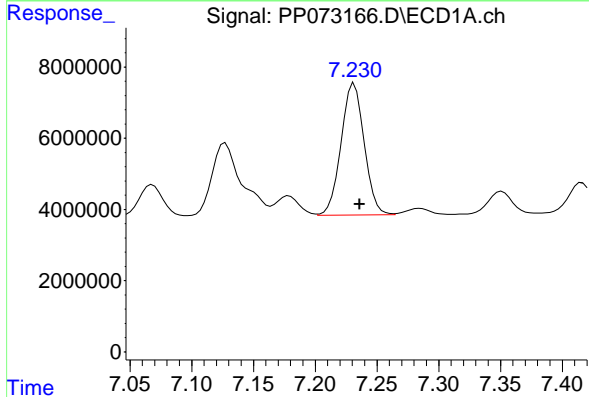
Manual Integrations
 APPROVED

Reviewed By :Yogesh Patel 06/24/2025
 Supervised By :mohammad ahmed 06/25/2025



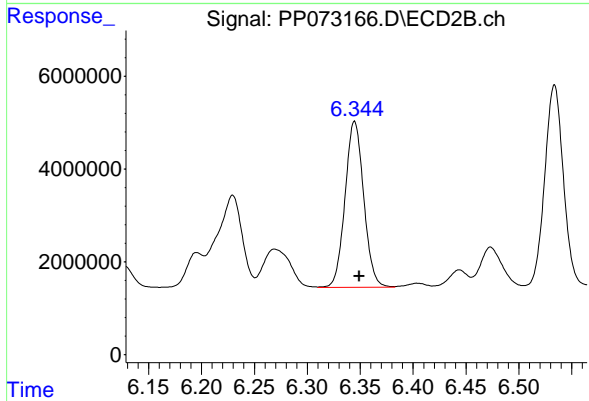
#7 AR-1016-5

R.T.: 5.315 min
 Delta R.T.: -0.003 min
 Response: 24588635
 Conc: 444.78 ng/ml



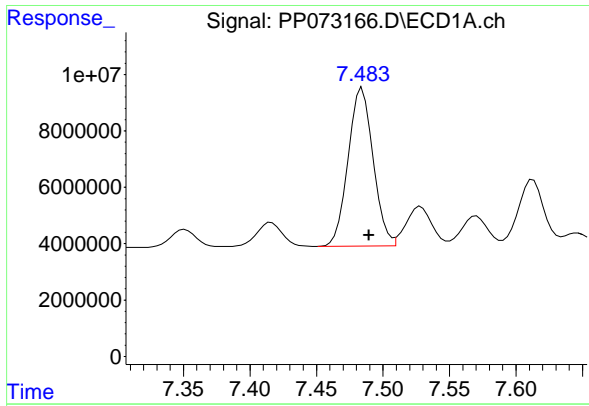
#31 AR-1260-1

R.T.: 7.231 min
 Delta R.T.: -0.004 min
 Response: 48117884
 Conc: 545.47 ng/ml



#31 AR-1260-1

R.T.: 6.345 min
 Delta R.T.: -0.004 min
 Response: 44069209
 Conc: 465.21 ng/ml



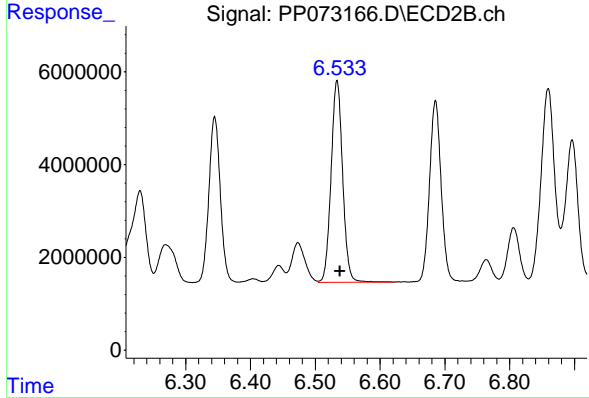
#32 AR-1260-2

R.T.: 7.484 min
 Delta R.T.: -0.005 min
 Response: 73468490
 Conc: 540.67 ng/ml

Instrument :
 ECD_P
 ClientSampleId :
 PB168579BS

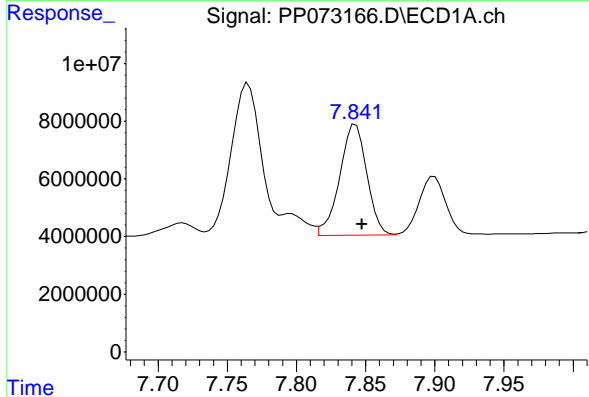
Manual Integrations
 APPROVED

Reviewed By :Yogesh Patel 06/24/2025
 Supervised By :mohammad ahmed 06/25/2025



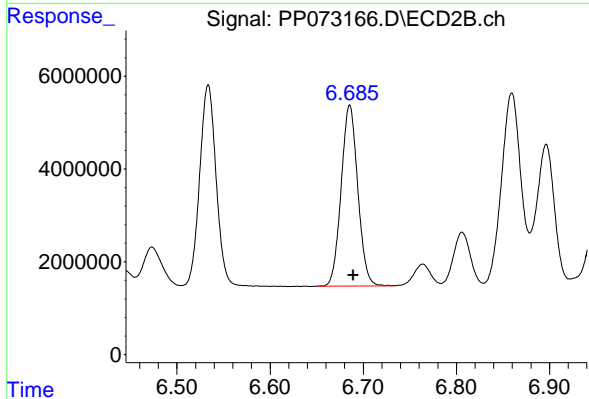
#32 AR-1260-2

R.T.: 6.534 min
 Delta R.T.: -0.004 min
 Response: 53909890
 Conc: 463.00 ng/ml



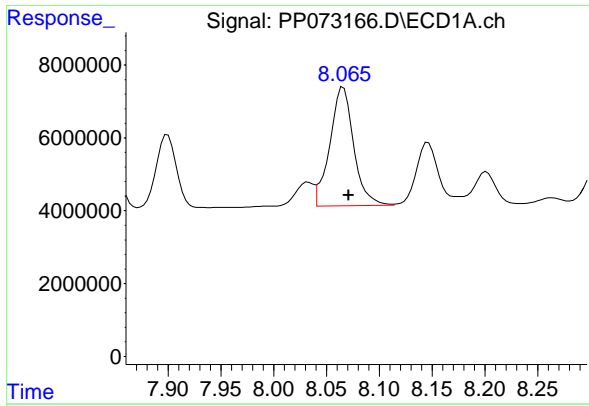
#33 AR-1260-3

R.T.: 7.843 min
 Delta R.T.: -0.005 min
 Response: 52508465
 Conc: 459.99 ng/ml



#33 AR-1260-3

R.T.: 6.686 min
 Delta R.T.: -0.004 min
 Response: 48344208
 Conc: 464.13 ng/ml



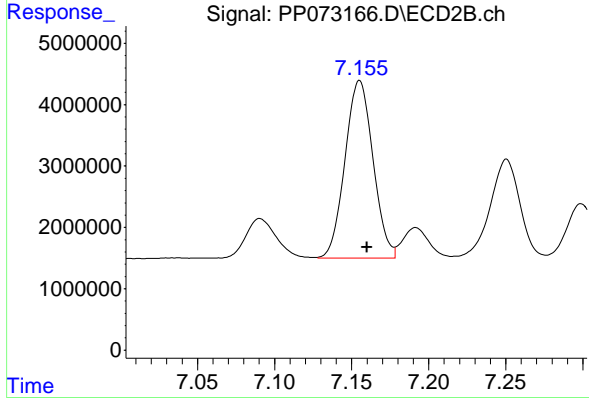
#34 AR-1260-4

R.T.: 8.066 min
 Delta R.T.: -0.005 min
 Response: 51451461
 Conc: 499.31 ng/ml

Instrument : ECD_P
 Client Sample Id : PB168579BS

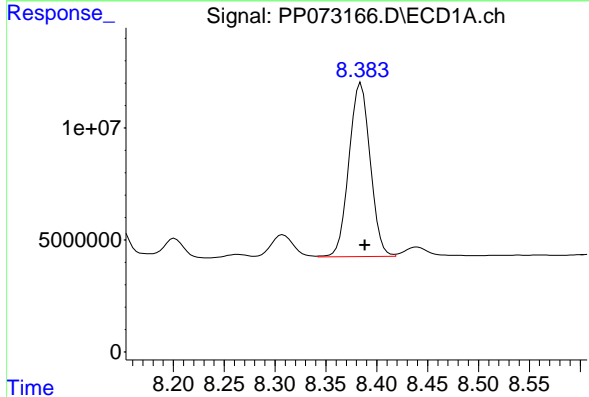
Manual Integrations
 APPROVED

Reviewed By :Yogesh Patel 06/24/2025
 Supervised By :mohammad ahmed 06/25/2025



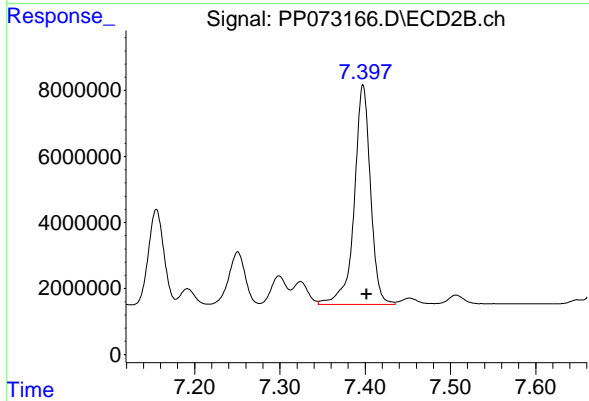
#34 AR-1260-4

R.T.: 7.155 min
 Delta R.T.: -0.005 min
 Response: 36408704
 Conc: 414.97 ng/ml



#35 AR-1260-5

R.T.: 8.385 min
 Delta R.T.: -0.004 min
 Response: 112399424
 Conc: 467.12 ng/ml



#35 AR-1260-5

R.T.: 7.398 min
 Delta R.T.: -0.004 min
 Response: 88157241
 Conc: 413.11 ng/ml