

Data Path : Z:\pestpcbsrv\HPCHEM1\ECD_P\Data\PP062325\
 Data File : PP073169.D
 Signal(s) : Signal #1: ECD1A.ch Signal #2: ECD2B.ch
 Acq On : 23 Jun 2025 13:45
 Operator : YP\AJ
 Sample : Q2380-05
 Misc :
 ALS Vial : 11 Sample Multiplier: 1

Instrument :
 ECD_P
ClientSampleId :
 RBR-200059

Manual Integrations
APPROVED
 Reviewed By :Yogesh Patel 06/24/2025
 Supervised By :mohammad ahmed 06/25/2025

Integration File signal 1: autoint1.e
 Integration File signal 2: autoint2.e
 Quant Time: Jun 23 14:34:46 2025
 Quant Method : Z:\pestpcbsrv\HPCHEM1\ECD_P\methods\PP061725.M
 Quant Title : GC EXTRACTABLES
 QLast Update : Wed Jun 18 08:17:15 2025
 Response via : Initial Calibration
 Integrator: ChemStation

Volume Inj. : 2 µl
 Signal #1 Phase : ZB-MR1 Signal #2 Phase: ZB-MR2
 Signal #1 Info : 30Mx0.32mmx 0.50µ Signal #2 Info : 30M x 0.32mm x 0.25µm

Compound	RT#1	RT#2	Resp#1	Resp#2	ng/ml	ng/ml

System Monitoring Compounds						
1) SA Tetrachlo...	4.494	3.788	42830539	33567750	20.291	18.630m
2) SA Decachlor...	10.184	8.795	38453974	29328896	22.502	21.974
Target Compounds						
21) L5 AR-1248-1	5.646	4.869	9402194	10302505	197.656	236.348
22) L5 AR-1248-2	5.916	5.104	15496871	18062390	264.673	308.255
23) L5 AR-1248-3	6.118	5.147	20237286	15322271	310.153	253.076
24) L5 AR-1248-4	6.518	5.318	35954459	20591798	422.673	294.074 #
25) L5 AR-1248-5	6.555	5.709	48197632	37758351	575.885	531.569
26) L6 AR-1254-1	6.490	5.668	34070659	51098395	404.765	466.014
27) L6 AR-1254-2	6.710	5.817	56136405	28160572	447.656	297.850 #
28) L6 AR-1254-3	7.071	6.218	48919423	55779007	372.830	378.042
29) L6 AR-1254-4	7.353	6.447	48489123	36926791	404.805	380.292
30) L6 AR-1254-5	7.769	6.863	51512408	52735833	450.849	405.777

(f)=RT Delta > 1/2 Window (#)=Amounts differ by > 25% (m)=manual int.

Data Path : Z:\pestpcbsrv\HPCHEM1\ECD_P\Data\PP062325\
 Data File : PP073169.D
 Signal(s) : Signal #1: ECD1A.ch Signal #2: ECD2B.ch
 Acq On : 23 Jun 2025 13:45
 Operator : YP\AJ
 Sample : Q2380-05
 Misc :
 ALS Vial : 11 Sample Multiplier: 1

Instrument :

ECD_P

ClientSampleId :

RBR-200059

Manual Integrations

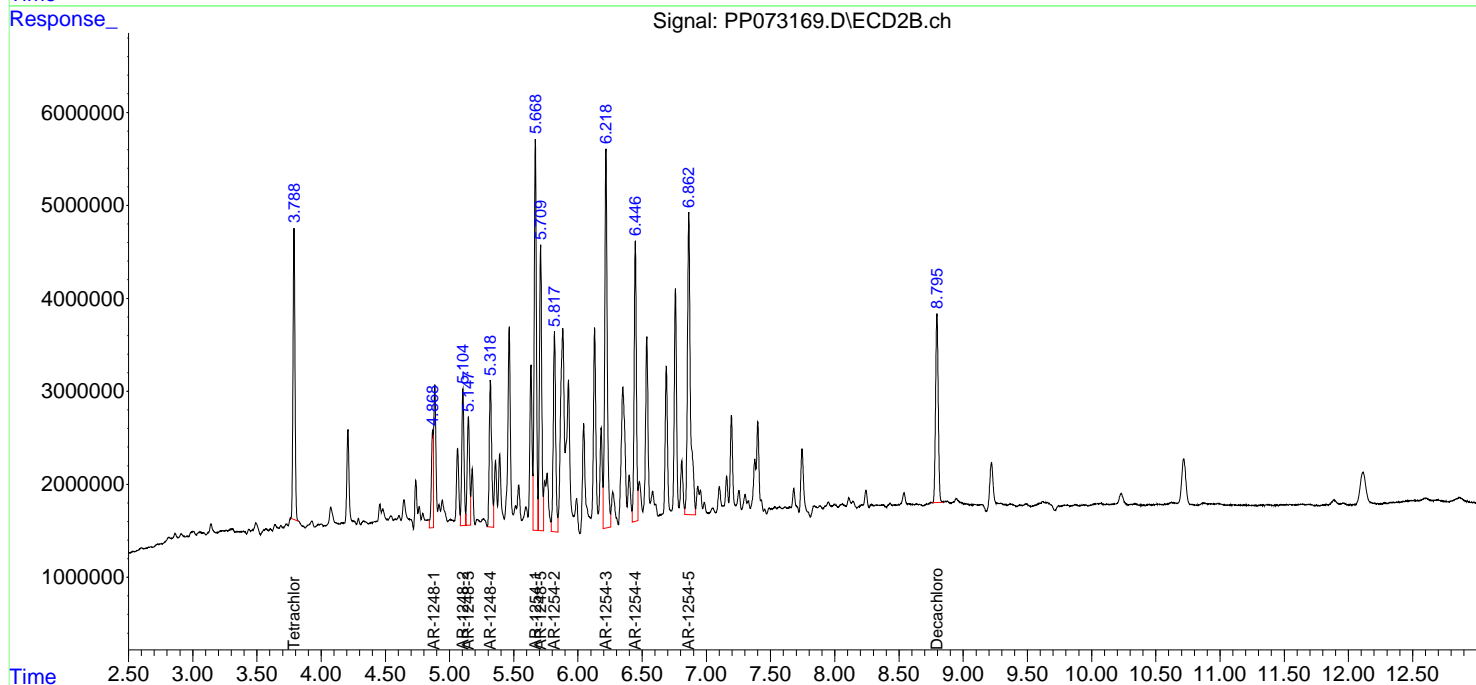
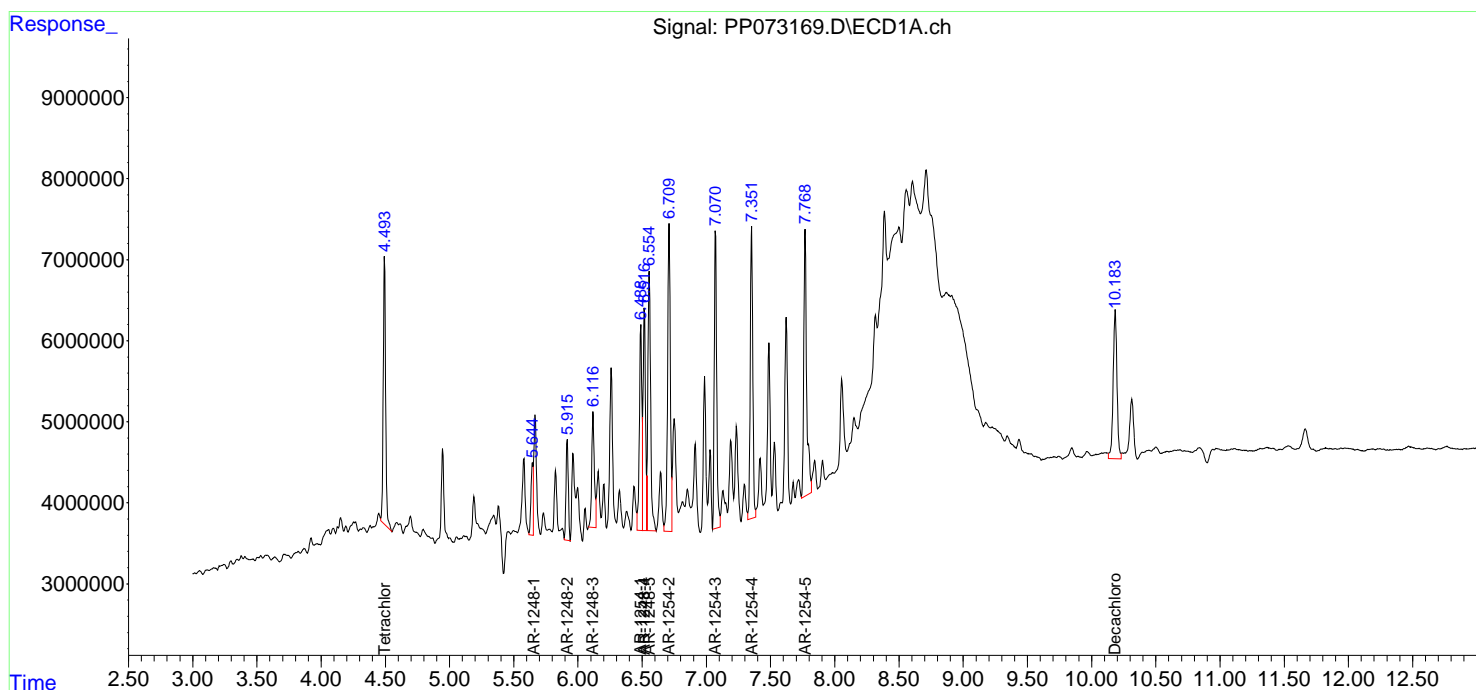
APPROVED

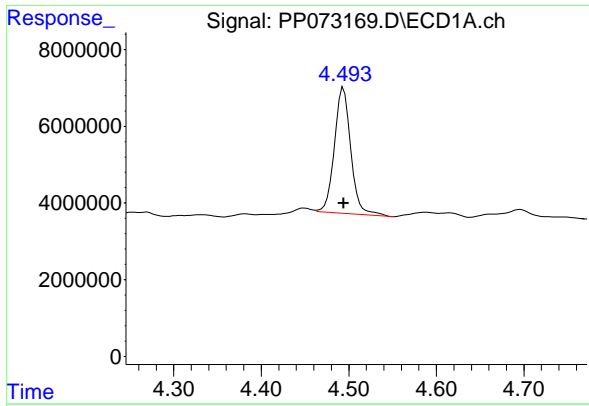
Reviewed By :Yogesh Patel 06/24/2025

Supervised By :mohammad ahmed 06/25/2025

Integration File signal 1: autoint1.e
 Integration File signal 2: autoint2.e
 Quant Time: Jun 23 14:34:46 2025
 Quant Method : Z:\pestpcbsrv\HPCHEM1\ECD_P\methods\PP061725.M
 Quant Title : GC EXTRACTABLES
 QLast Update : Wed Jun 18 08:17:15 2025
 Response via : Initial Calibration
 Integrator: ChemStation

Volume Inj. : 2 µl
 Signal #1 Phase : ZB-MR1 Signal #2 Phase: ZB-MR2
 Signal #1 Info : 30Mx0.32mmx 0.50µ Signal #2 Info : 30M x 0.32mm x 0.25µm





#1 Tetrachloro-m-xylene

R.T.: 4.494 min
 Delta R.T.: 0.000 min
 Response: 42830539
 Conc: 20.29 ng/ml

Instrument :

ECD_P

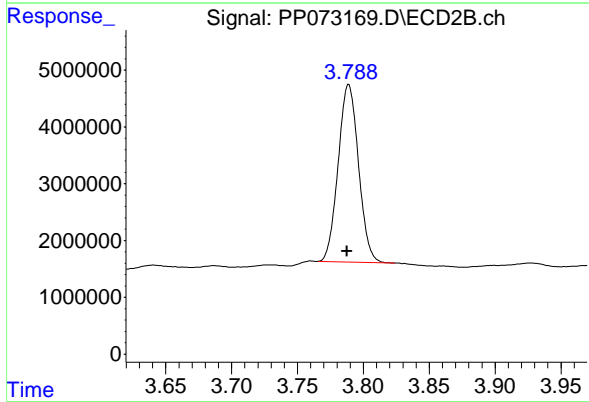
ClientSampleId :

RBR-200059

Manual Integrations

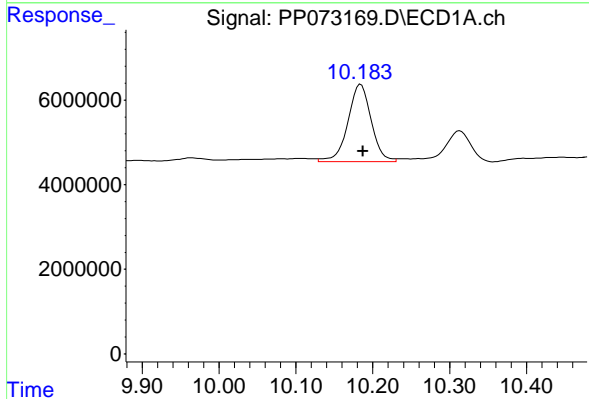
APPROVED

Reviewed By :Yogesh Patel 06/24/2025
 Supervised By :mohammad ahmed 06/25/2025



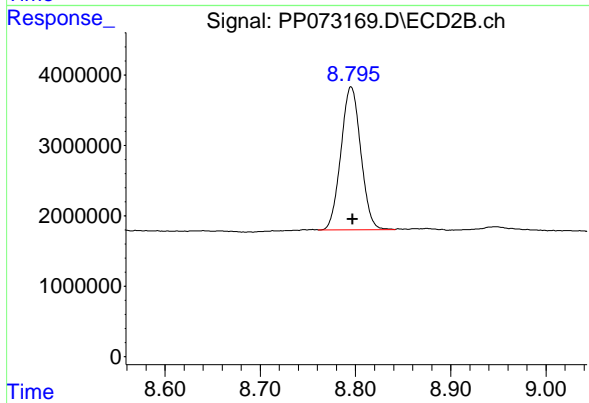
#1 Tetrachloro-m-xylene

R.T.: 3.788 min
 Delta R.T.: 0.000 min
 Response: 33567750
 Conc: 18.63 ng/ml m



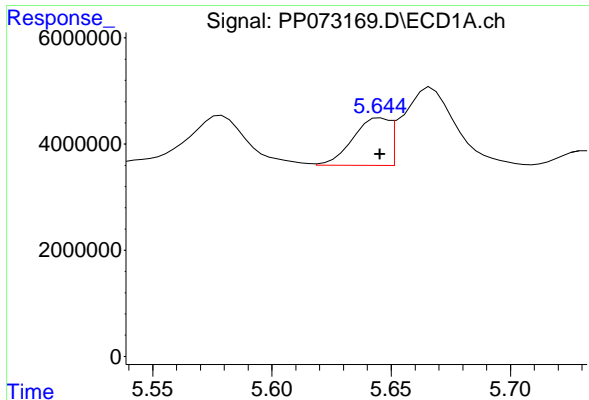
#2 Decachlorobiphenyl

R.T.: 10.184 min
 Delta R.T.: -0.003 min
 Response: 38453974
 Conc: 22.50 ng/ml



#2 Decachlorobiphenyl

R.T.: 8.795 min
 Delta R.T.: -0.002 min
 Response: 29328896
 Conc: 21.97 ng/ml



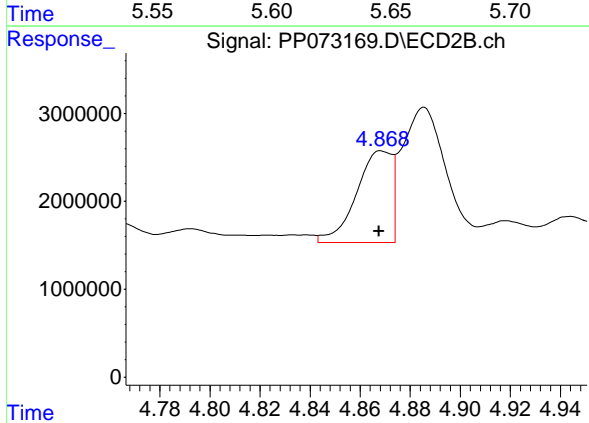
#21 AR-1248-1

R.T.: 5.646 min
 Delta R.T.: 0.000 min
 Response: 9402194
 Conc: 197.66 ng/ml

Instrument :
 ECD_P
 ClientSampleId :
 RBR-200059

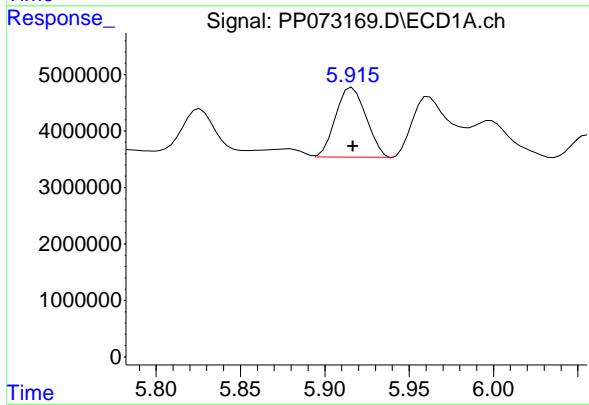
Manual Integrations
 APPROVED

Reviewed By :Yogesh Patel 06/24/2025
 Supervised By :mohammad ahmed 06/25/2025



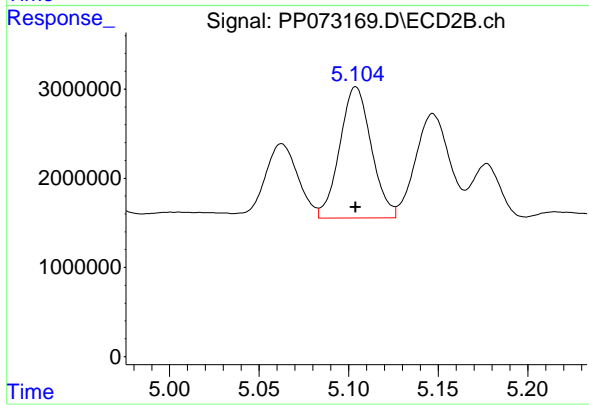
#21 AR-1248-1

R.T.: 4.869 min
 Delta R.T.: 0.001 min
 Response: 10302505
 Conc: 236.35 ng/ml



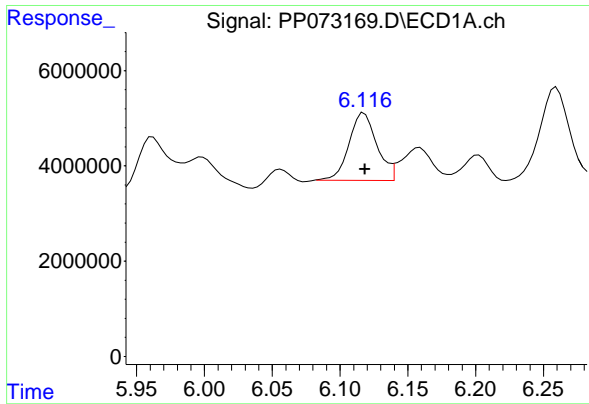
#22 AR-1248-2

R.T.: 5.916 min
 Delta R.T.: 0.000 min
 Response: 15496871
 Conc: 264.67 ng/ml



#22 AR-1248-2

R.T.: 5.104 min
 Delta R.T.: 0.000 min
 Response: 18062390
 Conc: 308.26 ng/ml



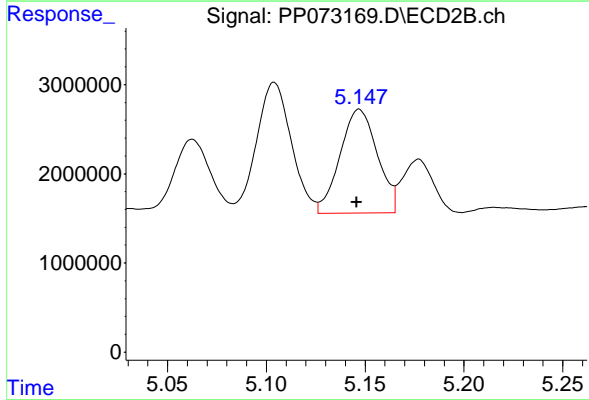
#23 AR-1248-3

R.T.: 6.118 min
 Delta R.T.: 0.000 min
 Response: 20237286
 Conc: 310.15 ng/ml

Instrument : ECD_P
 ClientSampleId : RBR-200059

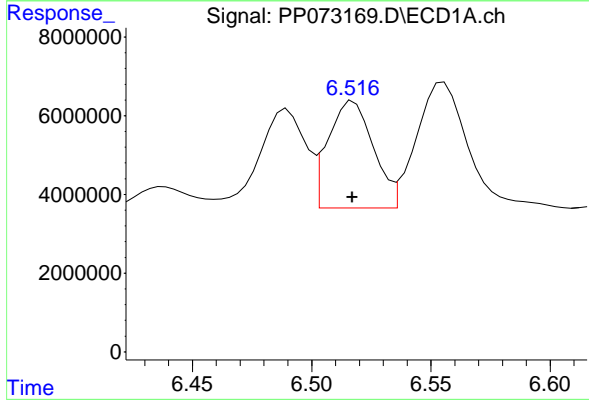
Manual Integrations
 APPROVED

Reviewed By :Yogesh Patel 06/24/2025
 Supervised By :mohammad ahmed 06/25/2025



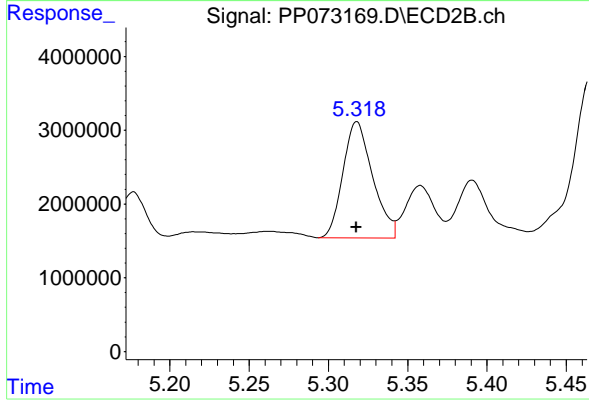
#23 AR-1248-3

R.T.: 5.147 min
 Delta R.T.: 0.001 min
 Response: 15322271
 Conc: 253.08 ng/ml



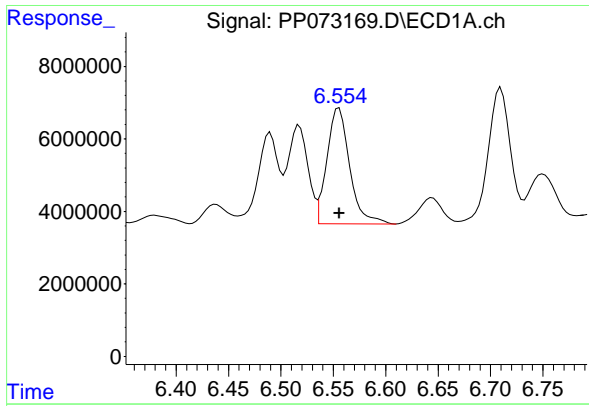
#24 AR-1248-4

R.T.: 6.518 min
 Delta R.T.: 0.000 min
 Response: 35954459
 Conc: 422.67 ng/ml



#24 AR-1248-4

R.T.: 5.318 min
 Delta R.T.: 0.000 min
 Response: 20591798
 Conc: 294.07 ng/ml



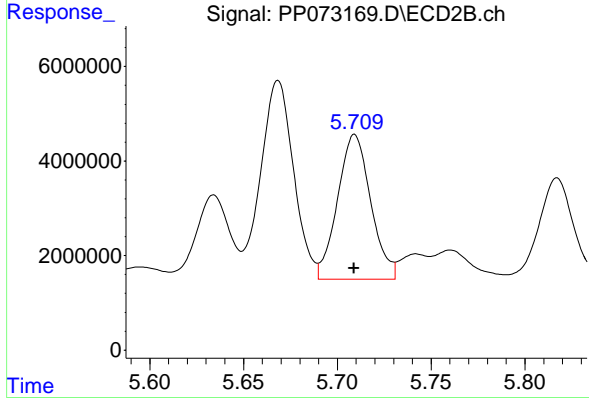
#25 AR-1248-5

R.T.: 6.555 min
 Delta R.T.: 0.000 min
 Response: 48197632
 Conc: 575.88 ng/ml

Instrument : ECD_P
 ClientSampleId : RBR-200059

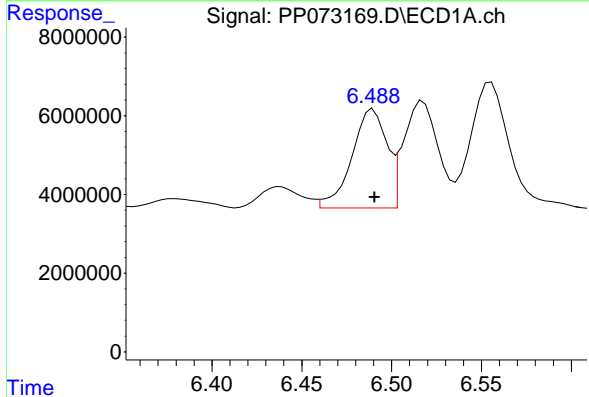
Manual Integrations
 APPROVED

Reviewed By :Yogesh Patel 06/24/2025
 Supervised By :mohammad ahmed 06/25/2025



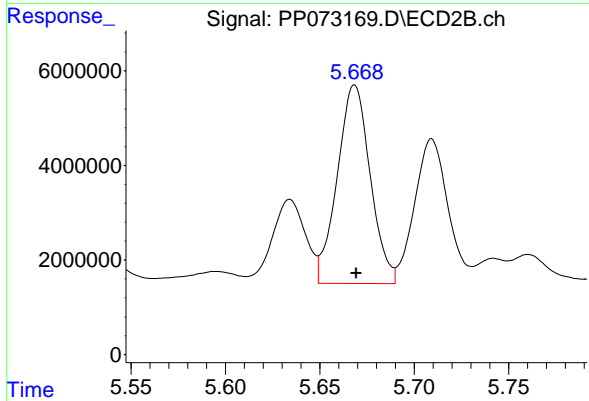
#25 AR-1248-5

R.T.: 5.709 min
 Delta R.T.: 0.000 min
 Response: 37758351
 Conc: 531.57 ng/ml



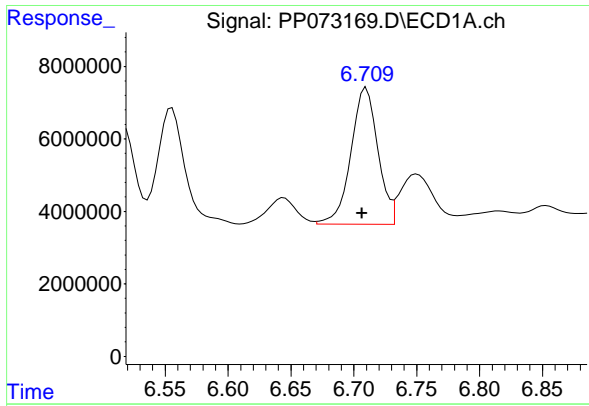
#26 AR-1254-1

R.T.: 6.490 min
 Delta R.T.: -0.001 min
 Response: 34070659
 Conc: 404.77 ng/ml



#26 AR-1254-1

R.T.: 5.668 min
 Delta R.T.: 0.000 min
 Response: 51098395
 Conc: 466.01 ng/ml



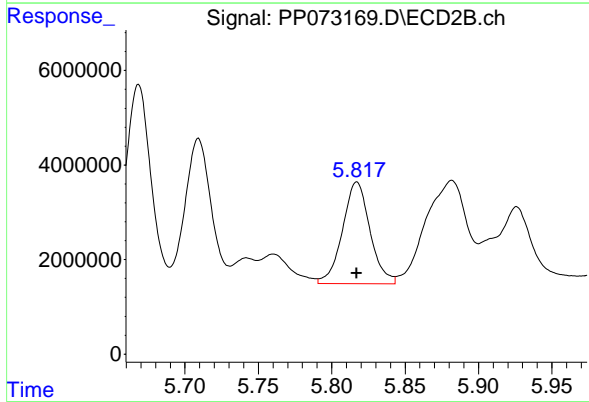
#27 AR-1254-2

R.T.: 6.710 min
 Delta R.T.: 0.003 min
 Response: 56136405
 Conc: 447.66 ng/ml

Instrument :
 ECD_P
 Client Sample Id :
 RBR-200059

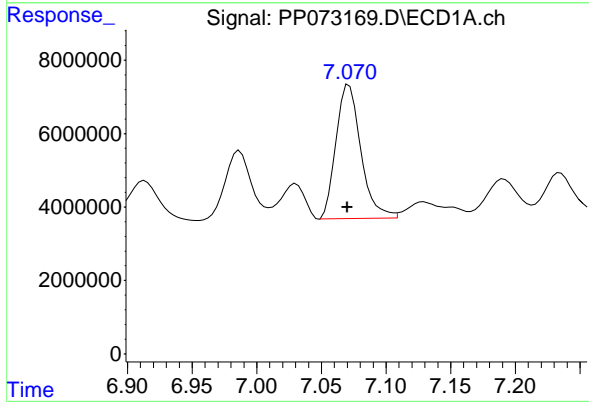
Manual Integrations
 APPROVED

Reviewed By :Yogesh Patel 06/24/2025
 Supervised By :mohammad ahmed 06/25/2025



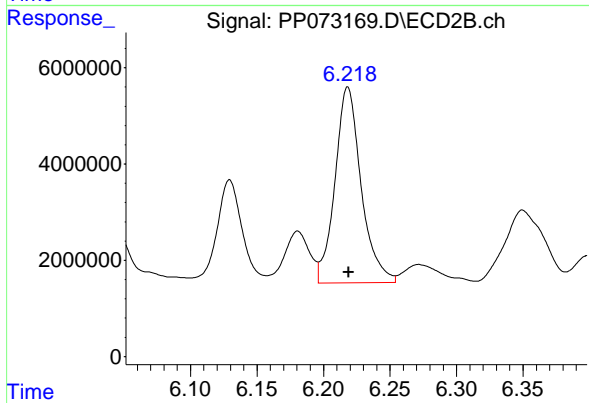
#27 AR-1254-2

R.T.: 5.817 min
 Delta R.T.: 0.000 min
 Response: 28160572
 Conc: 297.85 ng/ml



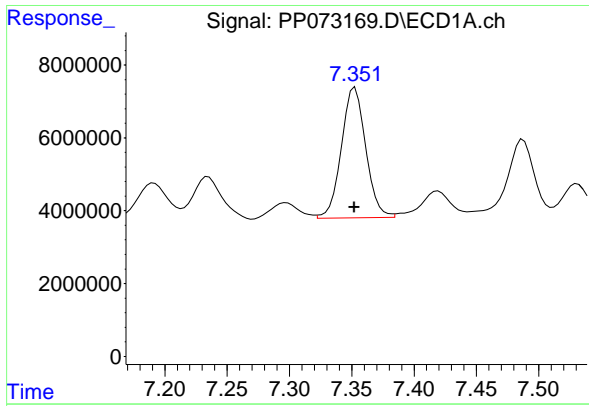
#28 AR-1254-3

R.T.: 7.071 min
 Delta R.T.: 0.001 min
 Response: 48919423
 Conc: 372.83 ng/ml



#28 AR-1254-3

R.T.: 6.218 min
 Delta R.T.: 0.000 min
 Response: 55779007
 Conc: 378.04 ng/ml



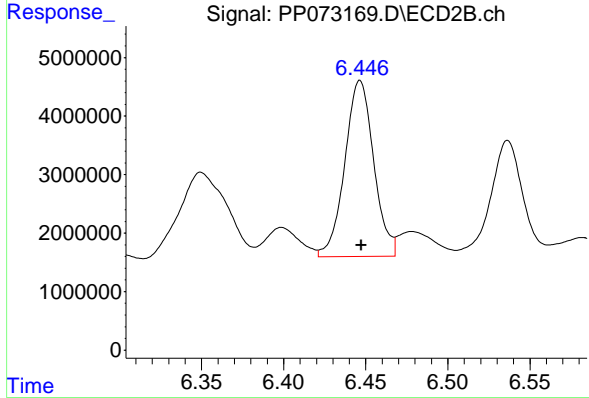
#29 AR-1254-4

R.T.: 7.353 min
 Delta R.T.: 0.000 min
 Response: 48489123
 Conc: 404.80 ng/ml

Instrument : ECD_P
 ClientSampleId : RBR-200059

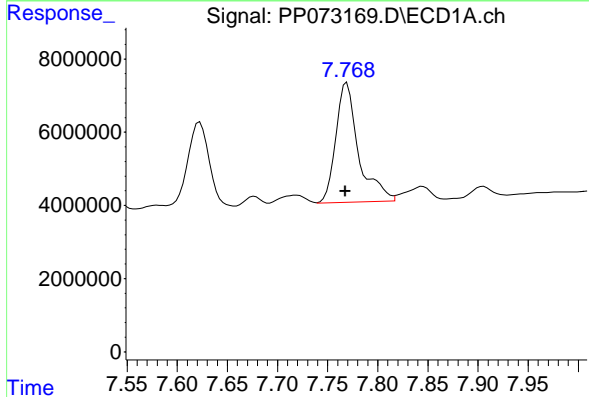
Manual Integrations
 APPROVED

Reviewed By :Yogesh Patel 06/24/2025
 Supervised By :mohammad ahmed 06/25/2025



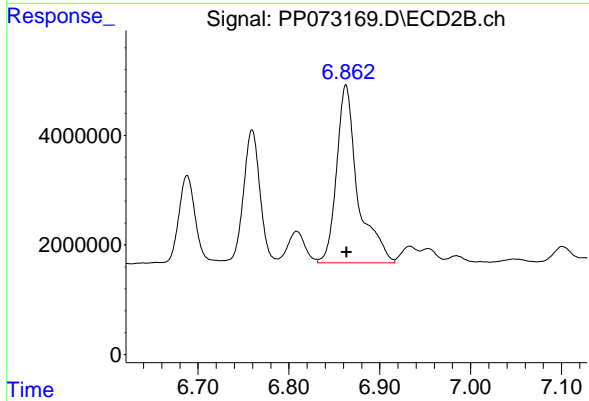
#29 AR-1254-4

R.T.: 6.447 min
 Delta R.T.: 0.000 min
 Response: 36926791
 Conc: 380.29 ng/ml



#30 AR-1254-5

R.T.: 7.769 min
 Delta R.T.: 0.001 min
 Response: 51512408
 Conc: 450.85 ng/ml



#30 AR-1254-5

R.T.: 6.863 min
 Delta R.T.: 0.000 min
 Response: 52735833
 Conc: 405.78 ng/ml