

Data Path : Z:\pestpcbsrv\HPCHEM1\ECD_P\Data\PP062325\
 Data File : PP073170.D
 Signal(s) : Signal #1: ECD1A.ch Signal #2: ECD2B.ch
 Acq On : 23 Jun 2025 14:01
 Operator : YP\AJ
 Sample : Q2380-05MS
 Misc :
 ALS Vial : 12 Sample Multiplier: 1

Instrument :
 ECD_P
ClientSampleId :
 RBR-200059MS

Manual Integrations
APPROVED

Reviewed By :Yogesh Patel 06/24/2025
 Supervised By :mohammad ahmed 06/25/2025

Integration File signal 1: autoint1.e
 Integration File signal 2: autoint2.e
 Quant Time: Jun 23 14:35:23 2025
 Quant Method : Z:\pestpcbsrv\HPCHEM1\ECD_P\methods\PP061725.M
 Quant Title : GC EXTRACTABLES
 QLast Update : Wed Jun 18 08:17:15 2025
 Response via : Initial Calibration
 Integrator: ChemStation

Volume Inj. : 2 µl
 Signal #1 Phase : ZB-MR1 Signal #2 Phase: ZB-MR2
 Signal #1 Info : 30Mx0.32mmx 0.50µ Signal #2 Info : 30M x 0.32mm x 0.25µm

Compound	RT#1	RT#2	Resp#1	Resp#2	ng/ml	ng/ml

System Monitoring Compounds						
1) SA Tetrachlo...	4.494	3.788	34221938	27612986	16.213	15.325
2) SA Decachlor...	10.185	8.794	27105996	20827027	15.862	15.604
Target Compounds						
3) L1 AR-1016-1	5.646	4.868	34222194	36694652	470.916	533.991m
4) L1 AR-1016-2	5.668	4.885	87392549	70219244	840.146	697.737m
5) L1 AR-1016-3	5.729	5.062	31916636	43864682	488.407	801.676 #
6) L1 AR-1016-4	5.826	5.104	46788914	47531813	894.953	1066.941
7) L1 AR-1016-5	6.118	5.317	67642220	70307852	1352.706	1271.797
21) L5 AR-1248-1	5.646	4.868	34222194	33286389	719.431	763.618m
22) L5 AR-1248-2	5.916	5.104	48880433	47531813	834.836	811.184
23) L5 AR-1248-3	6.118	5.146	67642220	56383842	1036.674	931.284
24) L5 AR-1248-4	6.517	5.317	68194956	70307852	801.685	1004.076 #
25) L5 AR-1248-5	6.556	5.709	100.2E6	85185335	1196.709	1199.255
26) L6 AR-1254-1	6.491	5.668	79242044	98826161	941.409	901.287
27) L6 AR-1254-2	6.711	5.816	110.3E6	52524241	879.287	555.540 #
28) L6 AR-1254-3	7.072	6.218	70316892	99288023	535.907	672.924 #
29) L6 AR-1254-4	7.354	6.446	65935156	51438549	550.451	529.742
30) L6 AR-1254-5	7.768	6.862	106.2E6	92053666	929.836	708.308
31) L7 AR-1260-1	7.236	6.348	54731063	72597290	620.440	766.355
32) L7 AR-1260-2	7.488	6.537	84899487	65643871	624.795	563.775
33) L7 AR-1260-3	7.846	6.688	47225340	58556834	413.705	562.176 #
34) L7 AR-1260-4	8.068	7.158	67102186	34782970	651.190	396.439 #
35) L7 AR-1260-5	8.388	7.400	106.1E6	92995564	440.900	435.780

(f)=RT Delta > 1/2 Window (#)=Amounts differ by > 25% (m)=manual int.

Data Path : Z:\pestpcbsrv\HPCHEM1\ECD_P\Data\PP062325\
 Data File : PP073170.D
 Signal(s) : Signal #1: ECD1A.ch Signal #2: ECD2B.ch
 Acq On : 23 Jun 2025 14:01
 Operator : YP\AJ
 Sample : Q2380-05MS
 Misc :
 ALS Vial : 12 Sample Multiplier: 1

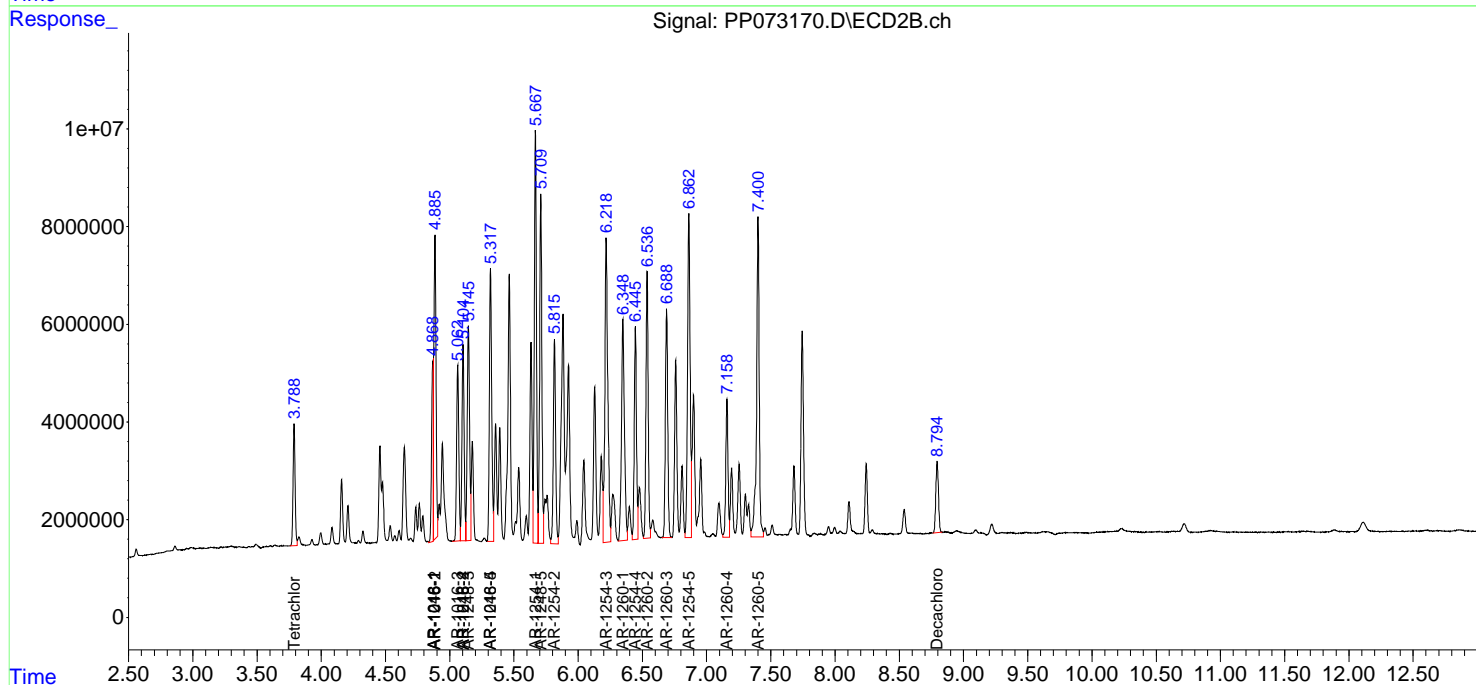
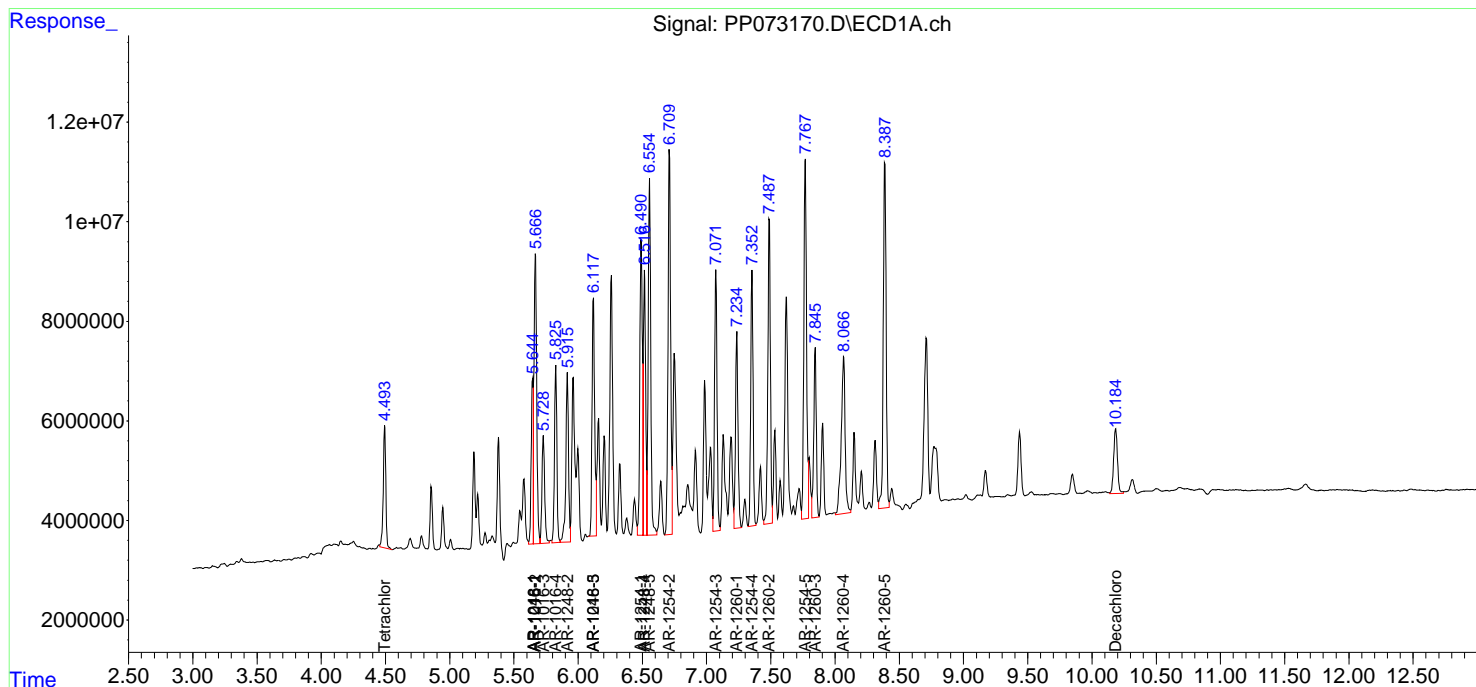
Instrument :
 ECD_P
ClientSampleId :
 RBR-200059MS

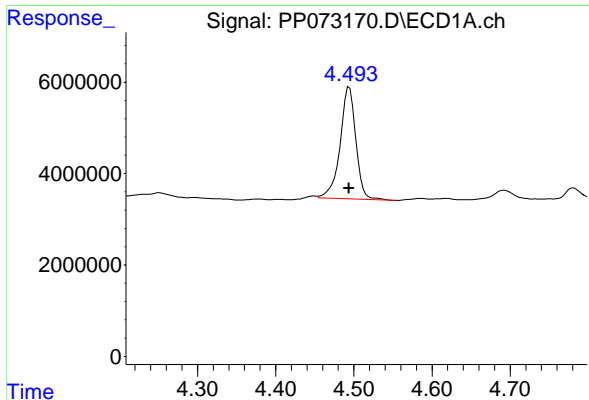
Manual Integrations
APPROVED

Reviewed By :Yogesh Patel 06/24/2025
 Supervised By :mohammad ahmed 06/25/2025

Integration File signal 1: autoint1.e
 Integration File signal 2: autoint2.e
 Quant Time: Jun 23 14:35:23 2025
 Quant Method : Z:\pestpcbsrv\HPCHEM1\ECD_P\methods\PP061725.M
 Quant Title : GC EXTRACTABLES
 QLast Update : Wed Jun 18 08:17:15 2025
 Response via : Initial Calibration
 Integrator: ChemStation

Volume Inj. : 2 µl
 Signal #1 Phase : ZB-MR1 Signal #2 Phase: ZB-MR2
 Signal #1 Info : 30Mx0.32mmx 0.50µm Signal #2 Info : 30M x 0.32mm x 0.25µm





#1 Tetrachloro-m-xylene

R.T.: 4.494 min
 Delta R.T.: 0.000 min
 Response: 34221938
 Conc: 16.21 ng/ml

Instrument :

ECD_P

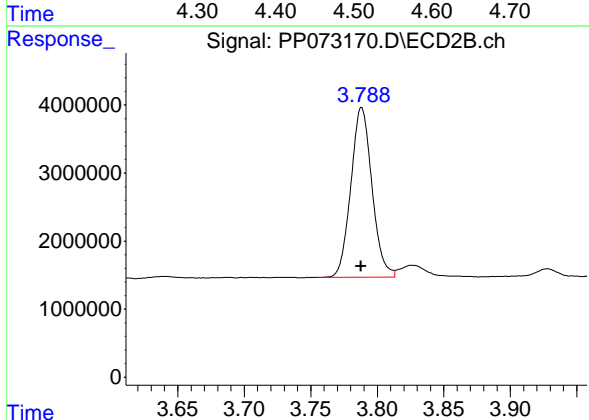
Client Sample Id :

RBR-200059MS

Manual Integrations

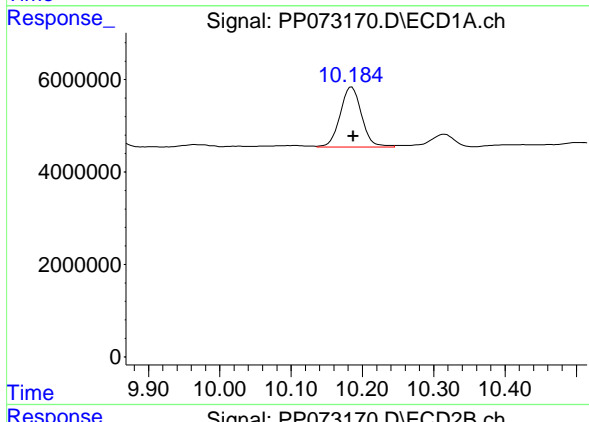
APPROVED

Reviewed By :Yogesh Patel 06/24/2025
 Supervised By :mohammad ahmed 06/25/2025



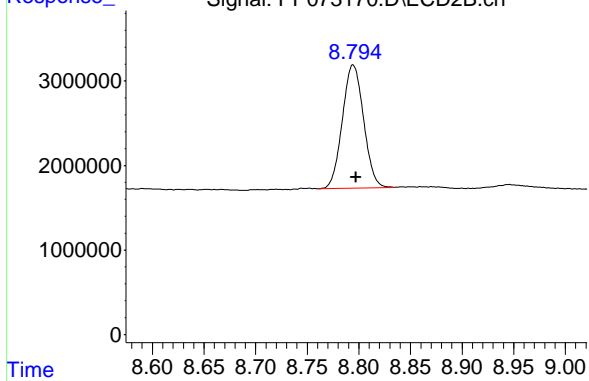
#1 Tetrachloro-m-xylene

R.T.: 3.788 min
 Delta R.T.: 0.000 min
 Response: 27612986
 Conc: 15.33 ng/ml



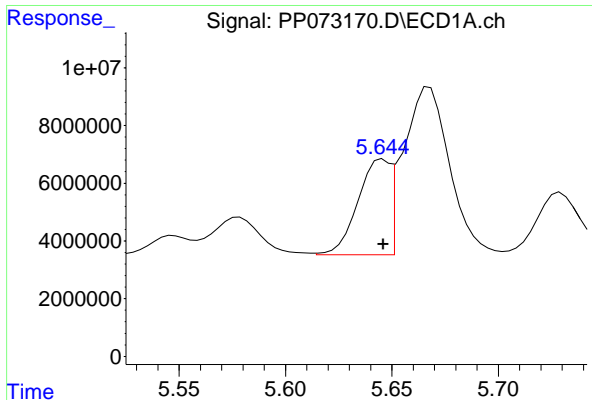
#2 Decachlorobiphenyl

R.T.: 10.185 min
 Delta R.T.: -0.002 min
 Response: 27105996
 Conc: 15.86 ng/ml



#2 Decachlorobiphenyl

R.T.: 8.794 min
 Delta R.T.: -0.003 min
 Response: 20827027
 Conc: 15.60 ng/ml



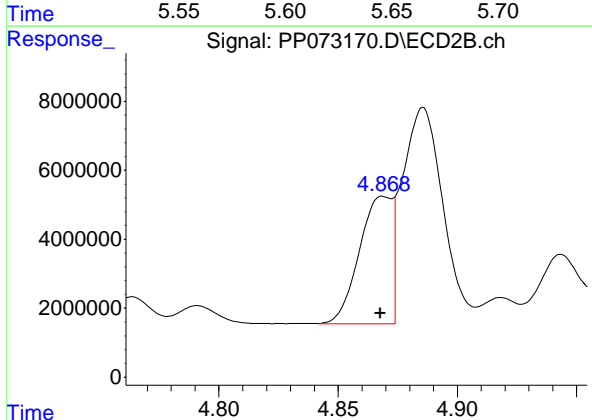
#3 AR-1016-1

R.T.: 5.646 min
 Delta R.T.: 0.000 min
 Response: 34222194
 Conc: 470.92 ng/ml

Instrument : ECD_P
 ClientSampleId : RBR-200059MS

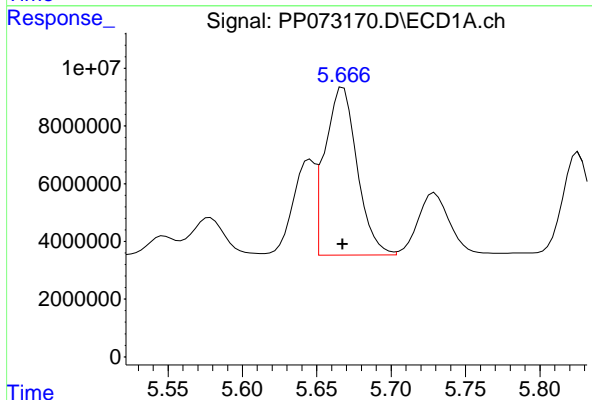
Manual Integrations
 APPROVED

Reviewed By :Yogesh Patel 06/24/2025
 Supervised By :mohammad ahmed 06/25/2025



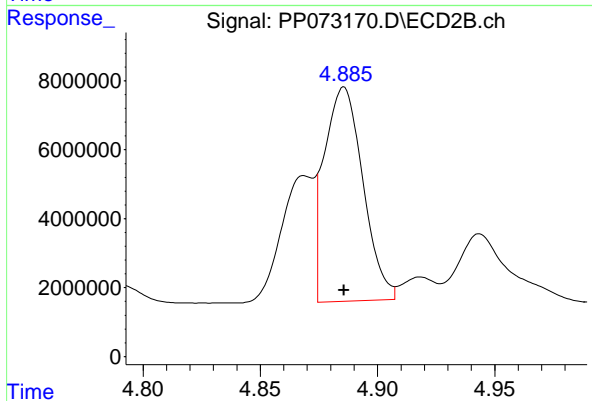
#3 AR-1016-1

R.T.: 4.868 min
 Delta R.T.: 0.000 min
 Response: 36694652
 Conc: 533.99 ng/ml m



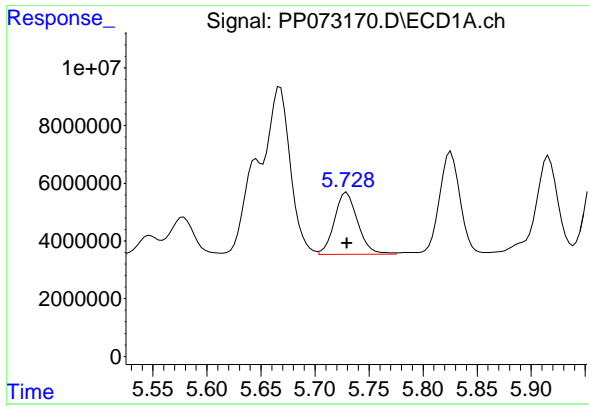
#4 AR-1016-2

R.T.: 5.668 min
 Delta R.T.: 0.000 min
 Response: 87392549
 Conc: 840.15 ng/ml



#4 AR-1016-2

R.T.: 4.885 min
 Delta R.T.: 0.000 min
 Response: 70219244
 Conc: 697.74 ng/ml m



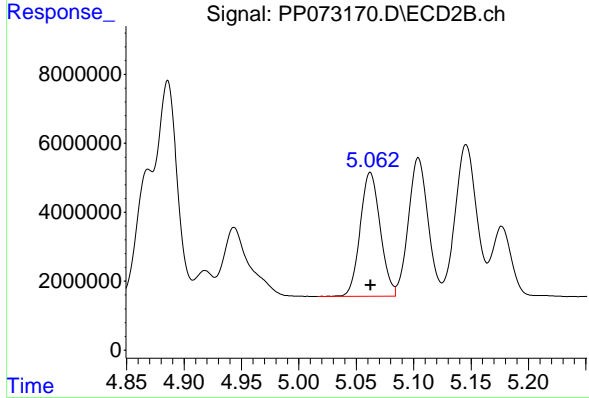
#5 AR-1016-3

R.T.: 5.729 min
 Delta R.T.: 0.000 min
 Response: 31916636
 Conc: 488.41 ng/ml

Instrument : ECD_P
 Client Sample Id : RBR-200059MS

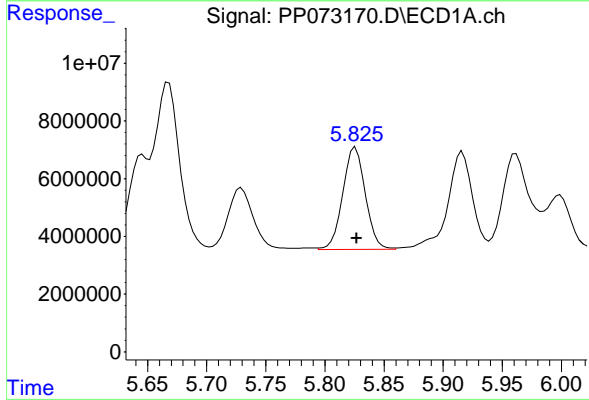
Manual Integrations
 APPROVED

Reviewed By :Yogesh Patel 06/24/2025
 Supervised By :mohammad ahmed 06/25/2025



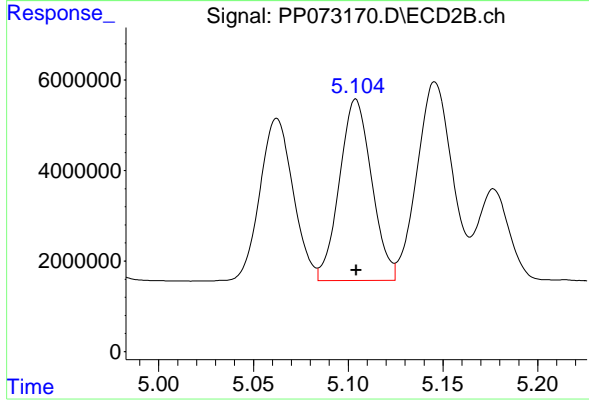
#5 AR-1016-3

R.T.: 5.062 min
 Delta R.T.: 0.000 min
 Response: 43864682
 Conc: 801.68 ng/ml



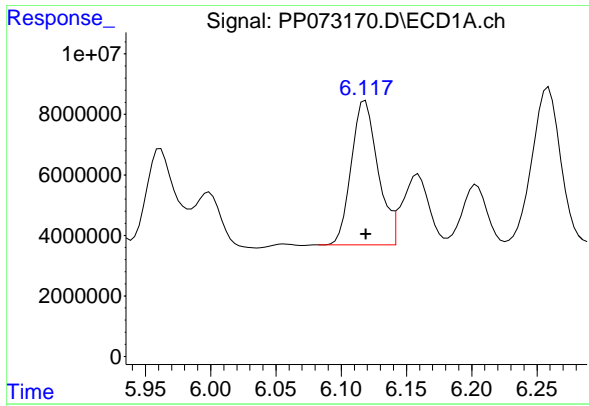
#6 AR-1016-4

R.T.: 5.826 min
 Delta R.T.: 0.000 min
 Response: 46788914
 Conc: 894.95 ng/ml



#6 AR-1016-4

R.T.: 5.104 min
 Delta R.T.: 0.000 min
 Response: 47531813
 Conc: 1066.94 ng/ml



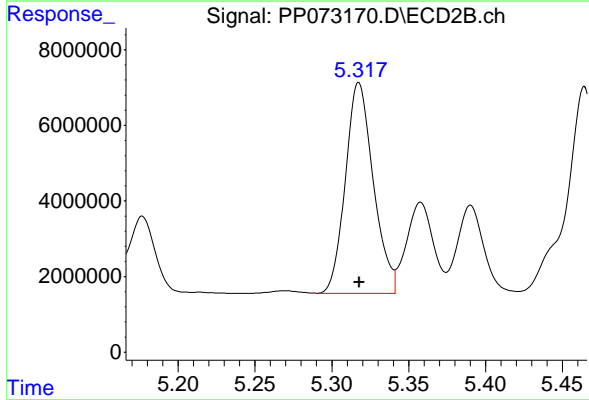
#7 AR-1016-5

R.T.: 6.118 min
 Delta R.T.: 0.000 min
 Response: 67642220
 Conc: 1352.71 ng/ml

Instrument : ECD_P
 Client Sample Id : RBR-200059MS

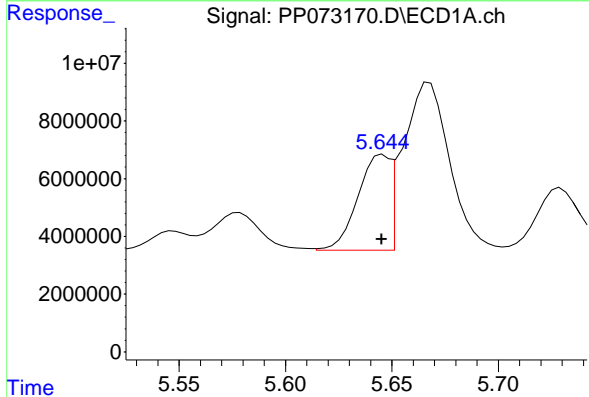
Manual Integrations
 APPROVED

Reviewed By :Yogesh Patel 06/24/2025
 Supervised By :mohammad ahmed 06/25/2025



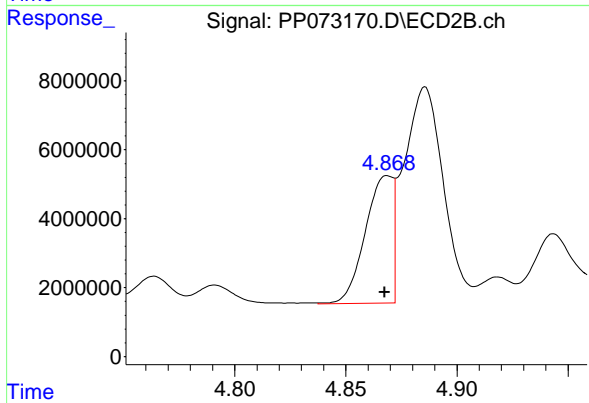
#7 AR-1016-5

R.T.: 5.317 min
 Delta R.T.: 0.000 min
 Response: 70307852
 Conc: 1271.80 ng/ml



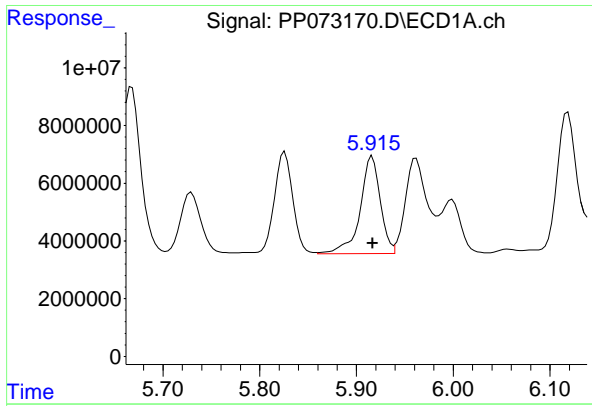
#21 AR-1248-1

R.T.: 5.646 min
 Delta R.T.: 0.000 min
 Response: 34222194
 Conc: 719.43 ng/ml



#21 AR-1248-1

R.T.: 4.868 min
 Delta R.T.: 0.000 min
 Response: 33286389
 Conc: 763.62 ng/ml m



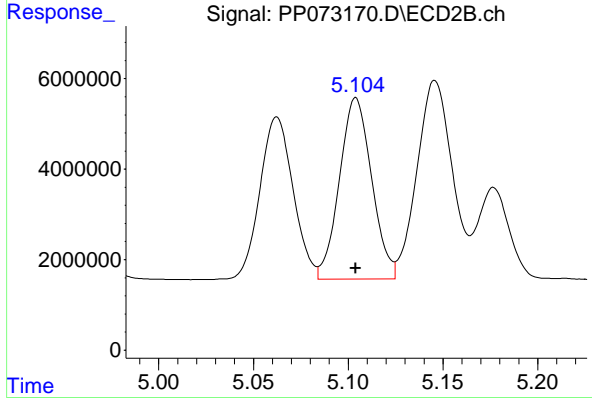
#22 AR-1248-2

R.T.: 5.916 min
 Delta R.T.: 0.000 min
 Response: 48880433
 Conc: 834.84 ng/ml

Instrument :
 ECD_P
 ClientSampleId :
 RBR-200059MS

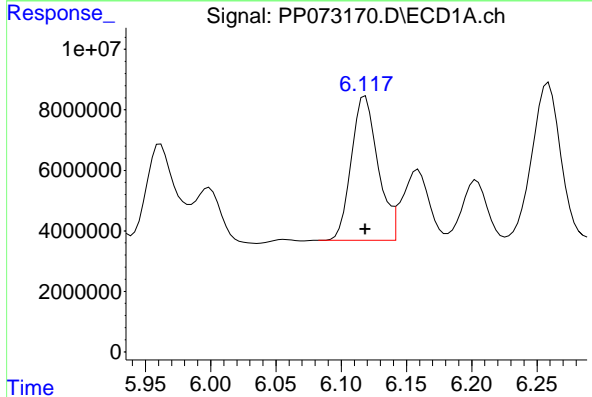
Manual Integrations
 APPROVED

Reviewed By :Yogesh Patel 06/24/2025
 Supervised By :mohammad ahmed 06/25/2025



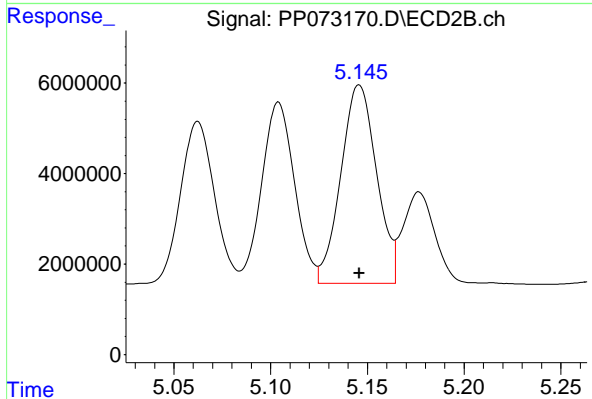
#22 AR-1248-2

R.T.: 5.104 min
 Delta R.T.: 0.000 min
 Response: 47531813
 Conc: 811.18 ng/ml



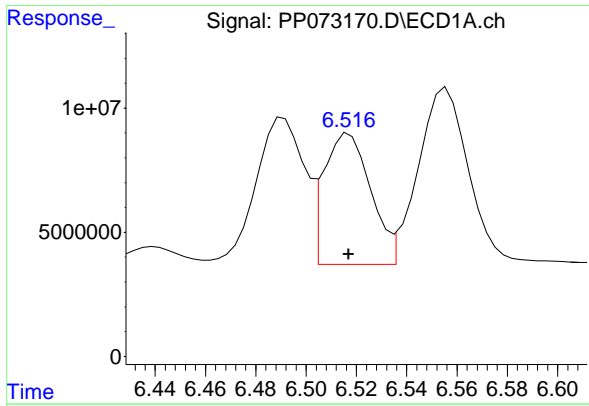
#23 AR-1248-3

R.T.: 6.118 min
 Delta R.T.: 0.000 min
 Response: 67642220
 Conc: 1036.67 ng/ml



#23 AR-1248-3

R.T.: 5.146 min
 Delta R.T.: 0.000 min
 Response: 56383842
 Conc: 931.28 ng/ml



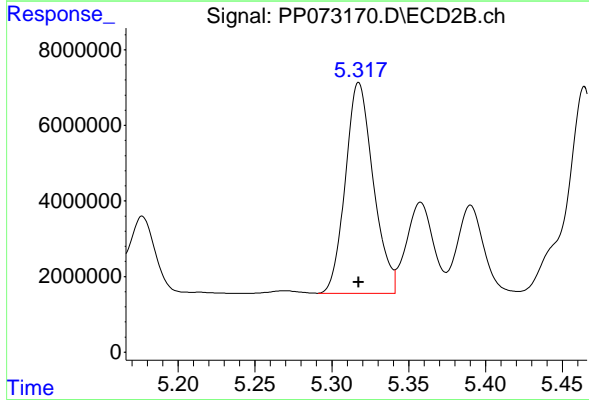
#24 AR-1248-4

R.T.: 6.517 min
 Delta R.T.: 0.000 min
 Response: 68194956
 Conc: 801.69 ng/ml

Instrument :
 ECD_P
 ClientSampleId :
 RBR-200059MS

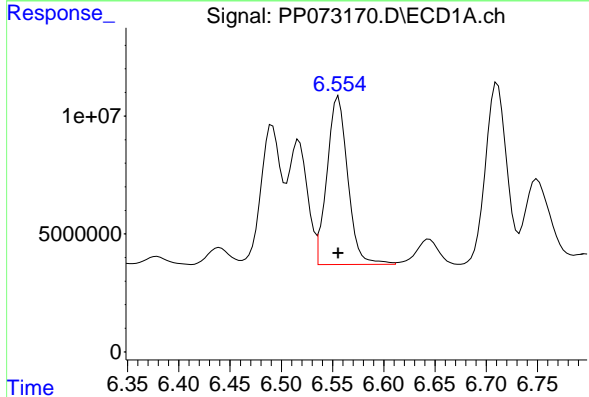
Manual Integrations
 APPROVED

Reviewed By :Yogesh Patel 06/24/2025
 Supervised By :mohammad ahmed 06/25/2025



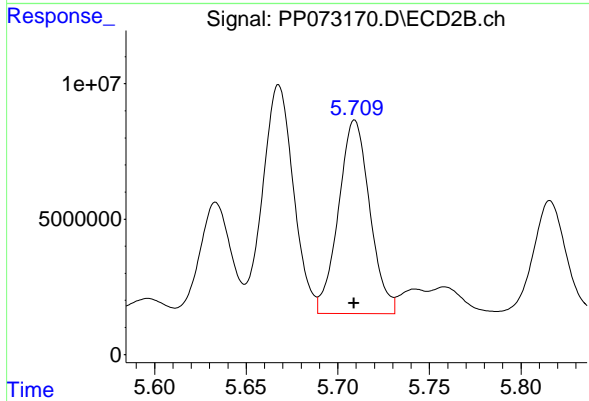
#24 AR-1248-4

R.T.: 5.317 min
 Delta R.T.: 0.000 min
 Response: 70307852
 Conc: 1004.08 ng/ml



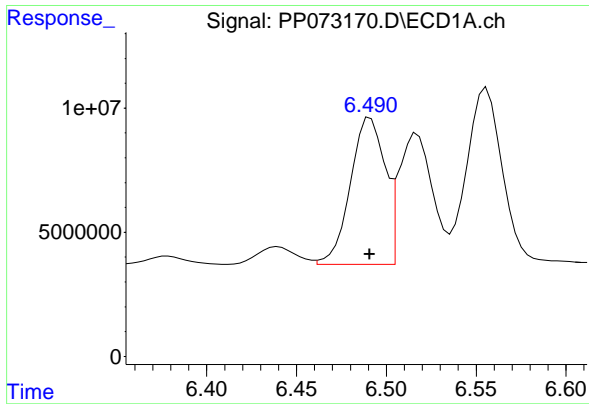
#25 AR-1248-5

R.T.: 6.556 min
 Delta R.T.: 0.000 min
 Response: 100156394
 Conc: 1196.71 ng/ml



#25 AR-1248-5

R.T.: 5.709 min
 Delta R.T.: 0.000 min
 Response: 85185335
 Conc: 1199.25 ng/ml



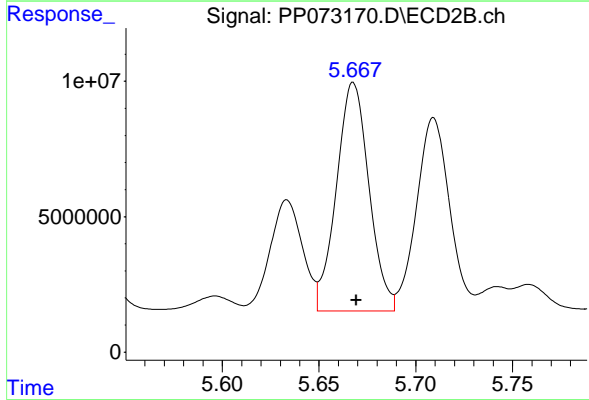
#26 AR-1254-1

R.T.: 6.491 min
 Delta R.T.: 0.000 min
 Response: 79242044
 Conc: 941.41 ng/ml

Instrument : ECD_P
 Client Sample Id : RBR-200059MS

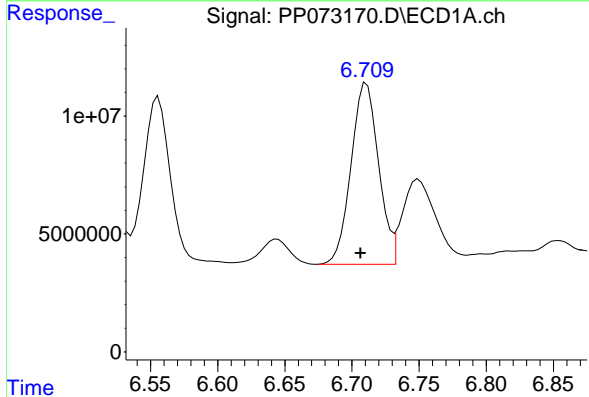
Manual Integrations
 APPROVED

Reviewed By :Yogesh Patel 06/24/2025
 Supervised By :mohammad ahmed 06/25/2025



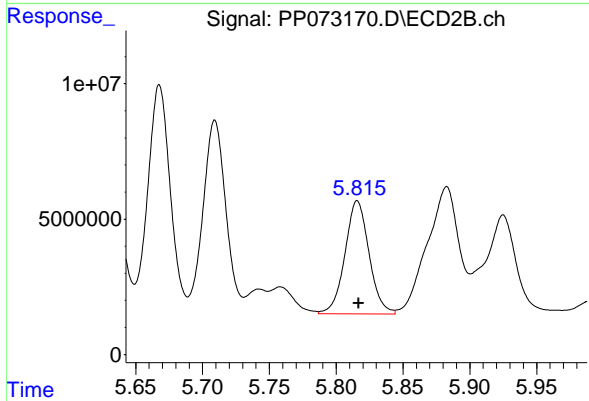
#26 AR-1254-1

R.T.: 5.668 min
 Delta R.T.: -0.001 min
 Response: 98826161
 Conc: 901.29 ng/ml



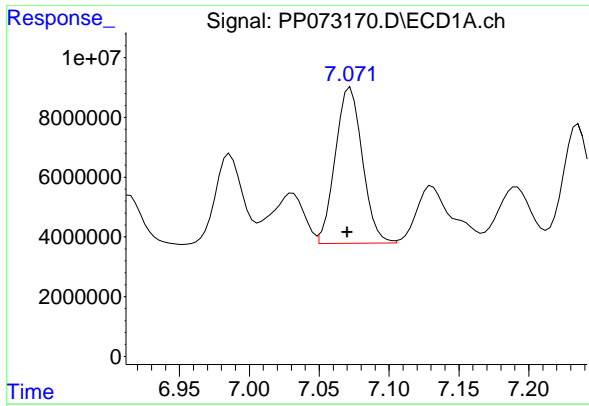
#27 AR-1254-2

R.T.: 6.711 min
 Delta R.T.: 0.004 min
 Response: 110263364
 Conc: 879.29 ng/ml



#27 AR-1254-2

R.T.: 5.816 min
 Delta R.T.: -0.001 min
 Response: 52524241
 Conc: 555.54 ng/ml



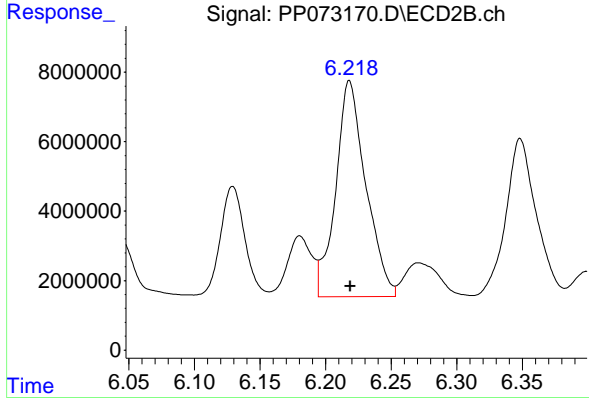
#28 AR-1254-3

R.T.: 7.072 min
 Delta R.T.: 0.002 min
 Response: 70316892
 Conc: 535.91 ng/ml

Instrument :
 ECD_P
 ClientSampleId :
 RBR-200059MS

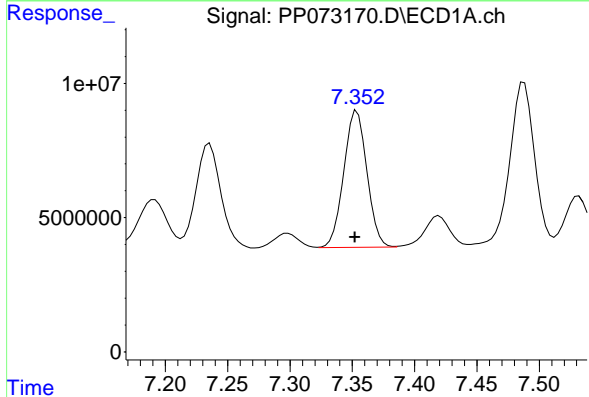
Manual Integrations
 APPROVED

Reviewed By :Yogesh Patel 06/24/2025
 Supervised By :mohammad ahmed 06/25/2025



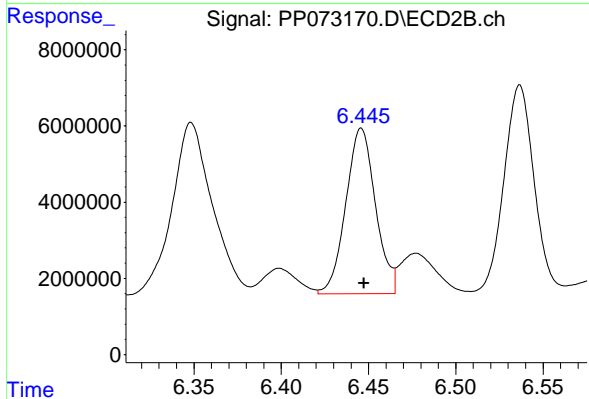
#28 AR-1254-3

R.T.: 6.218 min
 Delta R.T.: 0.000 min
 Response: 99288023
 Conc: 672.92 ng/ml



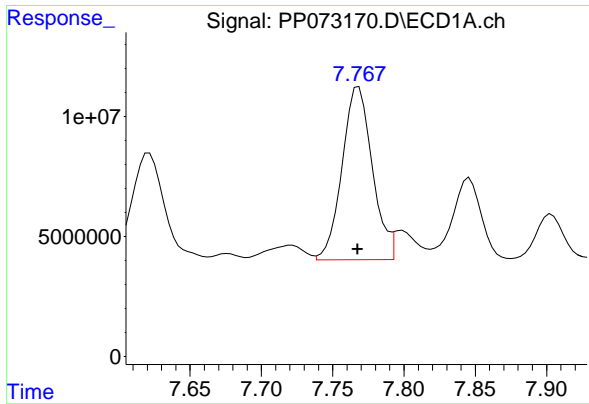
#29 AR-1254-4

R.T.: 7.354 min
 Delta R.T.: 0.002 min
 Response: 65935156
 Conc: 550.45 ng/ml



#29 AR-1254-4

R.T.: 6.446 min
 Delta R.T.: -0.001 min
 Response: 51438549
 Conc: 529.74 ng/ml



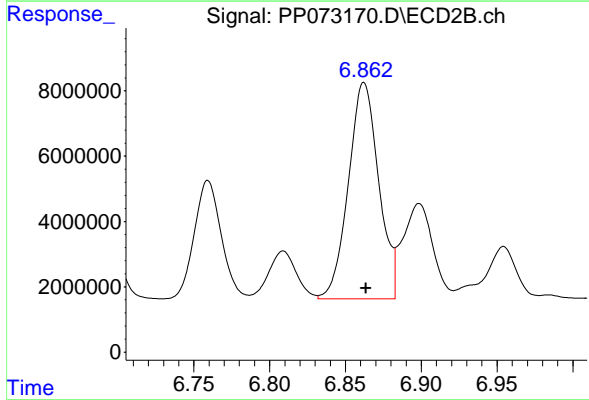
#30 AR-1254-5

R.T.: 7.768 min
 Delta R.T.: 0.000 min
 Response: 106239742
 Conc: 929.84 ng/ml

Instrument :
 ECD_P
 Client Sample Id :
 RBR-200059MS

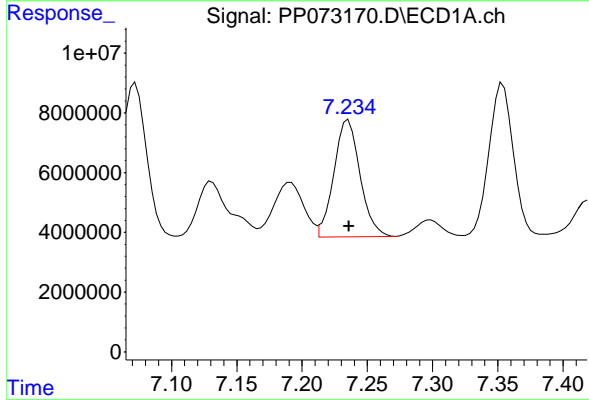
Manual Integrations
 APPROVED

Reviewed By :Yogesh Patel 06/24/2025
 Supervised By :mohammad ahmed 06/25/2025



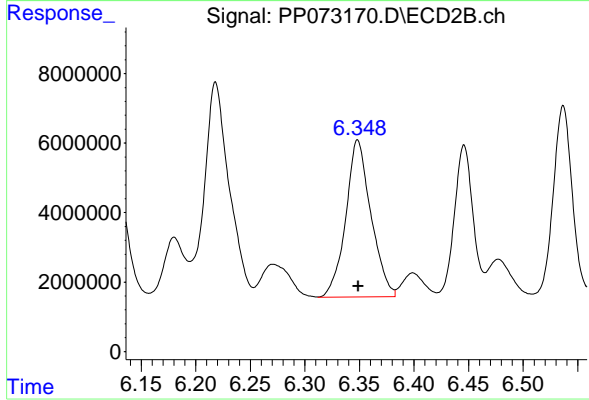
#30 AR-1254-5

R.T.: 6.862 min
 Delta R.T.: -0.001 min
 Response: 92053666
 Conc: 708.31 ng/ml



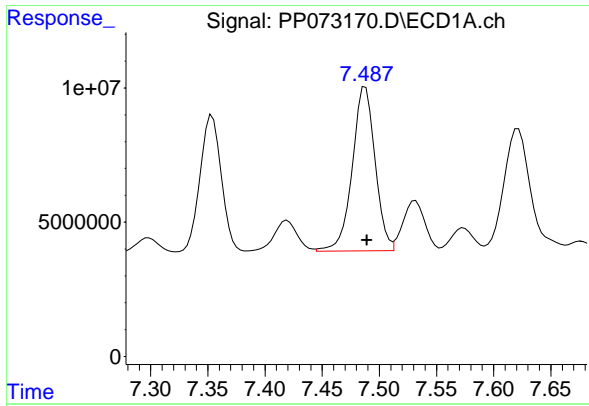
#31 AR-1260-1

R.T.: 7.236 min
 Delta R.T.: 0.000 min
 Response: 54731063
 Conc: 620.44 ng/ml



#31 AR-1260-1

R.T.: 6.348 min
 Delta R.T.: 0.000 min
 Response: 72597290
 Conc: 766.36 ng/ml



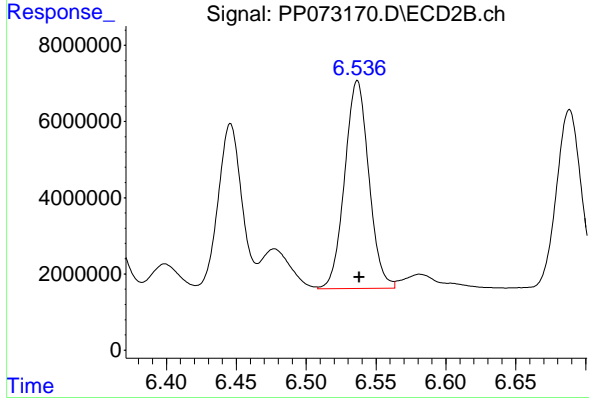
#32 AR-1260-2

R.T.: 7.488 min
 Delta R.T.: -0.001 min
 Response: 84899487
 Conc: 624.80 ng/ml

Instrument : ECD_P
 ClientSampleId : RBR-200059MS

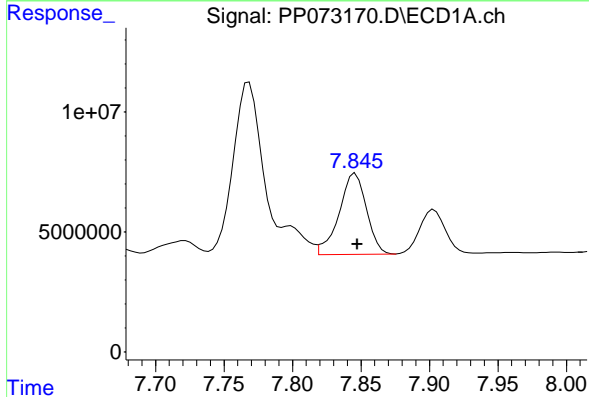
Manual Integrations
 APPROVED

Reviewed By :Yogesh Patel 06/24/2025
 Supervised By :mohammad ahmed 06/25/2025



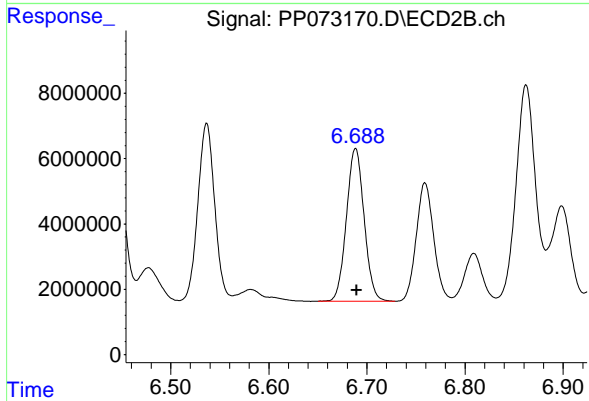
#32 AR-1260-2

R.T.: 6.537 min
 Delta R.T.: -0.001 min
 Response: 65643871
 Conc: 563.78 ng/ml



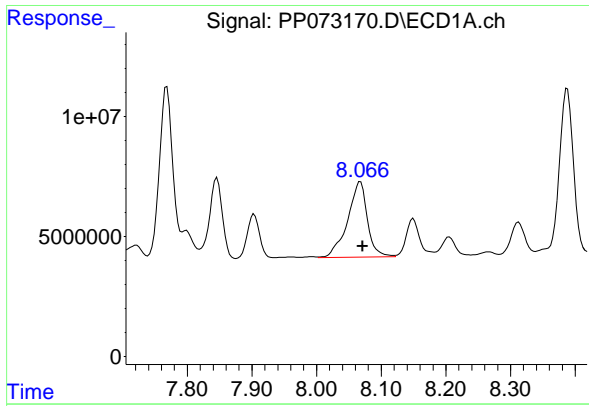
#33 AR-1260-3

R.T.: 7.846 min
 Delta R.T.: -0.001 min
 Response: 47225340
 Conc: 413.70 ng/ml



#33 AR-1260-3

R.T.: 6.688 min
 Delta R.T.: 0.000 min
 Response: 58556834
 Conc: 562.18 ng/ml



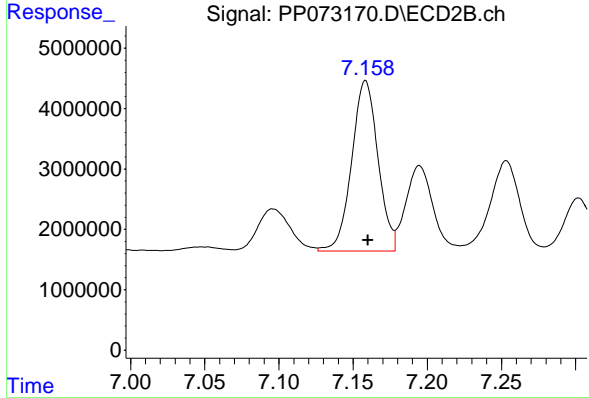
#34 AR-1260-4

R.T.: 8.068 min
 Delta R.T.: -0.003 min
 Response: 67102186
 Conc: 651.19 ng/ml

Instrument :
 ECD_P
 Client Sample Id :
 RBR-200059MS

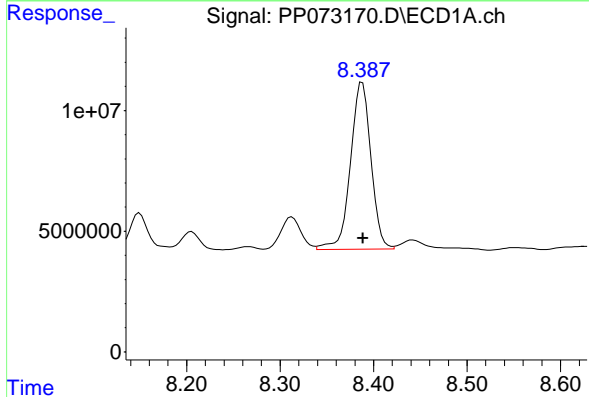
Manual Integrations
 APPROVED

Reviewed By :Yogesh Patel 06/24/2025
 Supervised By :mohammad ahmed 06/25/2025



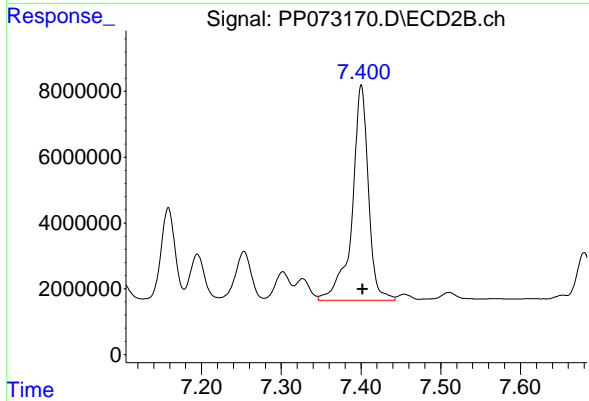
#34 AR-1260-4

R.T.: 7.158 min
 Delta R.T.: -0.002 min
 Response: 34782970
 Conc: 396.44 ng/ml



#35 AR-1260-5

R.T.: 8.388 min
 Delta R.T.: 0.000 min
 Response: 106090521
 Conc: 440.90 ng/ml



#35 AR-1260-5

R.T.: 7.400 min
 Delta R.T.: -0.001 min
 Response: 92995564
 Conc: 435.78 ng/ml