

Data Path : Z:\pestpcbsrv\HPCHEM1\ECD\_P\Data\PP062325\  
 Data File : PP073173.D  
 Signal(s) : Signal #1: ECD1A.ch Signal #2: ECD2B.ch  
 Acq On : 23 Jun 2025 14:51  
 Operator : YP\AJ  
 Sample : Q2381-03  
 Misc :  
 ALS Vial : 15 Sample Multiplier: 1

**Instrument :**  
 ECD\_P  
**ClientSampleId :**  
 VNJ-207

**Manual Integrations**  
**APPROVED**

Reviewed By :Yogesh Patel 06/24/2025  
 Supervised By :mohammad ahmed 06/25/2025

Integration File signal 1: autoint1.e  
 Integration File signal 2: autoint2.e  
 Quant Time: Jun 24 01:44:16 2025  
 Quant Method : Z:\pestpcbsrv\HPCHEM1\ECD\_P\methods\PP061725.M  
 Quant Title : GC EXTRACTABLES  
 QLast Update : Wed Jun 18 08:17:15 2025  
 Response via : Initial Calibration  
 Integrator: ChemStation

Volume Inj. : 2 µl  
 Signal #1 Phase : ZB-MR1 Signal #2 Phase: ZB-MR2  
 Signal #1 Info : 30Mx0.32mmx 0.50µ Signal #2 Info : 30M x 0.32mm x 0.25µm

Compound	RT#1	RT#2	Resp#1	Resp#2	ng/ml	ng/ml
-----						
System Monitoring Compounds						
1) SA Tetrachlo...	4.494	3.789	42926044	36288856	20.336	20.140
2) SA Decachlor...	10.185	8.795	29102522	26968474	17.030	20.205m
Target Compounds						
31) L7 AR-1260-1	7.233	6.349	13155567	16497854	149.133m	174.155
32) L7 AR-1260-2	7.484	6.536	29226255	22134194	215.083m	190.097
33) L7 AR-1260-3	7.845	6.689	15999585	13116720	140.160	125.927
34) L7 AR-1260-4	8.066	7.159	18122646	11043789	175.870m	125.872 #
35) L7 AR-1260-5	8.387	7.401	32081946	26621331	133.329	124.748
-----						

(f)=RT Delta > 1/2 Window (#)=Amounts differ by > 25% (m)=manual int.

Data Path : Z:\pestpcbsrv\HPCHEM1\ECD\_P\Data\PP062325\  
 Data File : PP073173.D  
 Signal(s) : Signal #1: ECD1A.ch Signal #2: ECD2B.ch  
 Acq On : 23 Jun 2025 14:51  
 Operator : YP\AJ  
 Sample : Q2381-03  
 Misc :  
 ALS Vial : 15 Sample Multiplier: 1

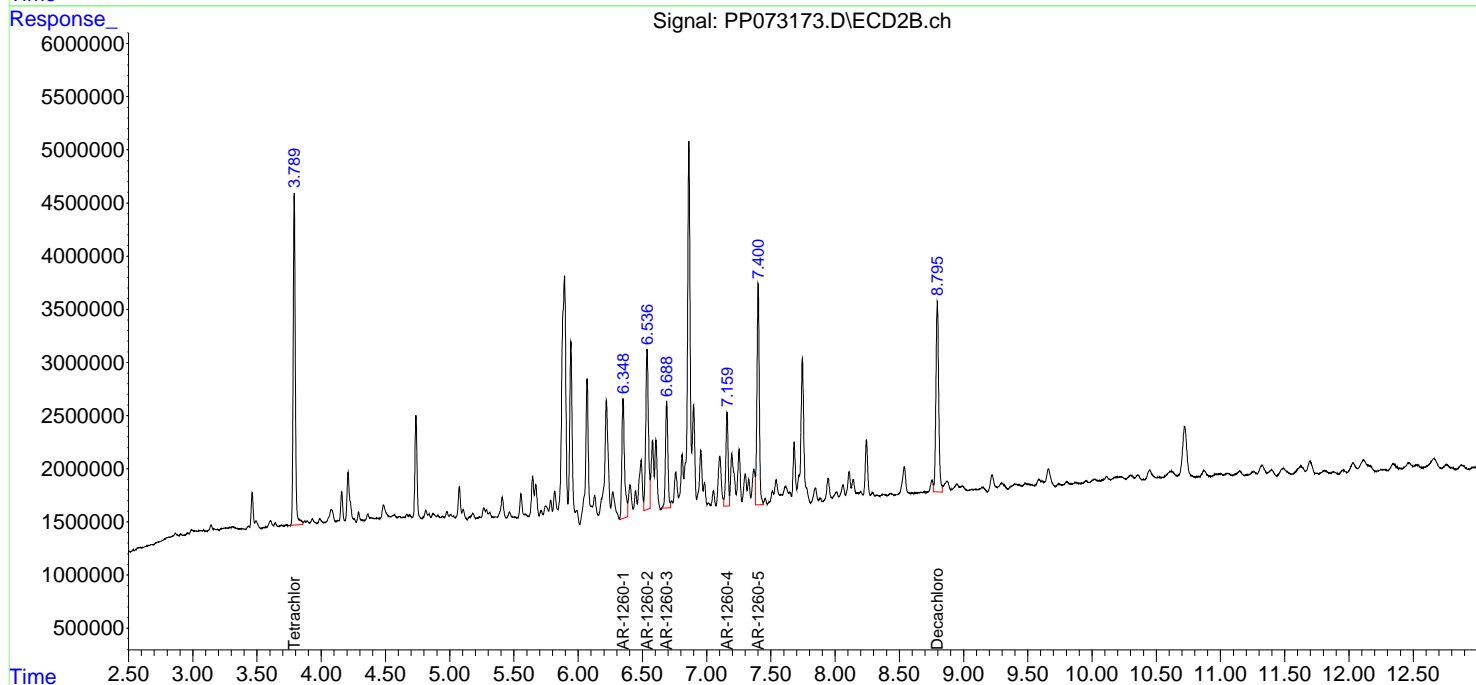
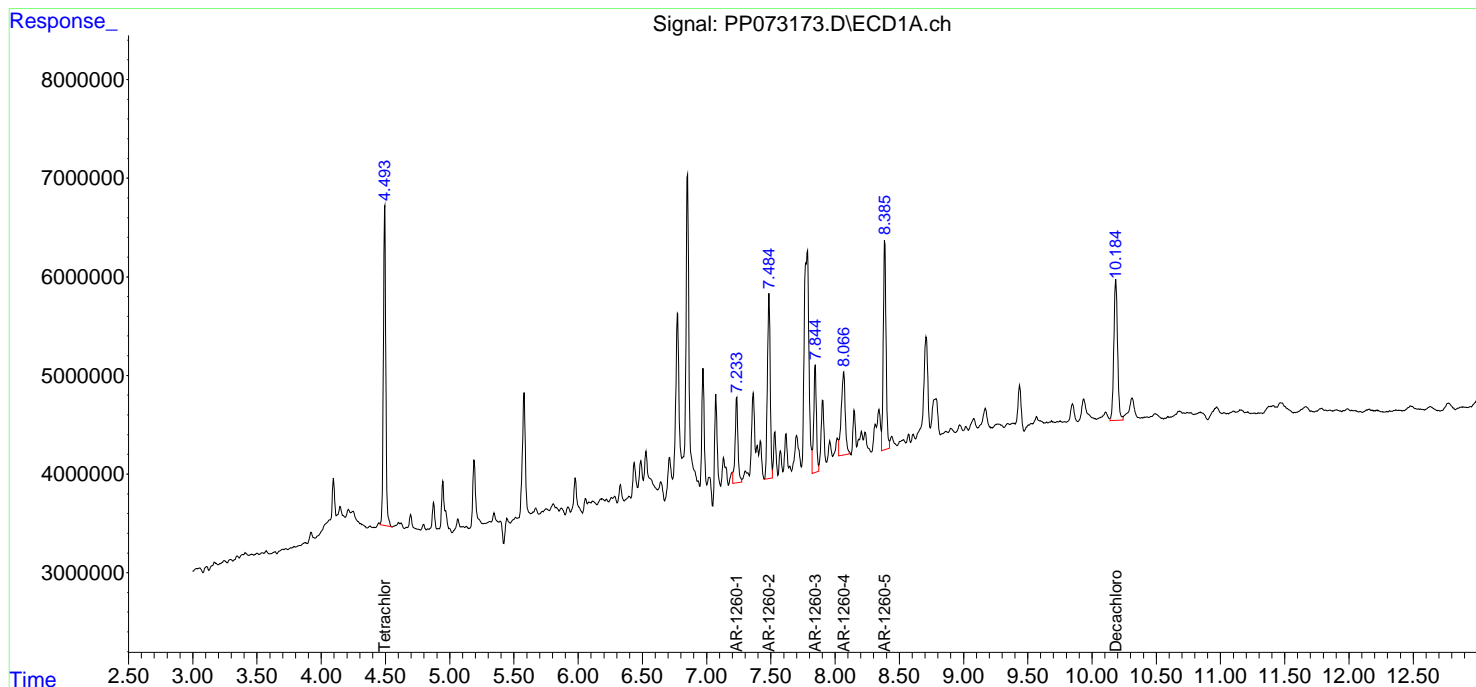
**Instrument :**  
 ECD\_P  
**ClientSampleId :**  
 VNJ-207

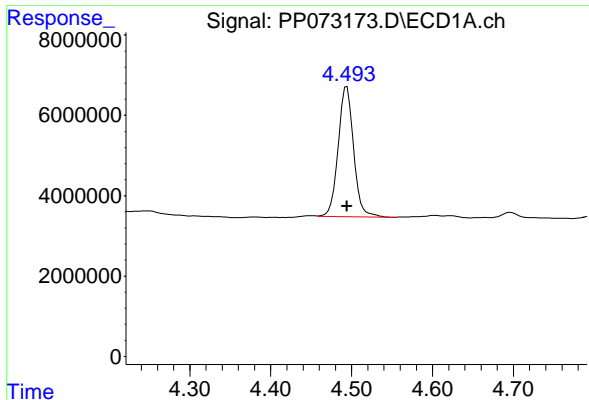
**Manual Integrations**  
**APPROVED**

Reviewed By :Yogesh Patel 06/24/2025  
 Supervised By :mohammad ahmed 06/25/2025

Integration File signal 1: autoint1.e  
 Integration File signal 2: autoint2.e  
 Quant Time: Jun 24 01:44:16 2025  
 Quant Method : Z:\pestpcbsrv\HPCHEM1\ECD\_P\methods\PP061725.M  
 Quant Title : GC EXTRACTABLES  
 QLast Update : Wed Jun 18 08:17:15 2025  
 Response via : Initial Calibration  
 Integrator: ChemStation

Volume Inj. : 2 µl  
 Signal #1 Phase : ZB-MR1 Signal #2 Phase: ZB-MR2  
 Signal #1 Info : 30Mx0.32mmx 0.50µm Signal #2 Info : 30M x 0.32mm x 0.25µm





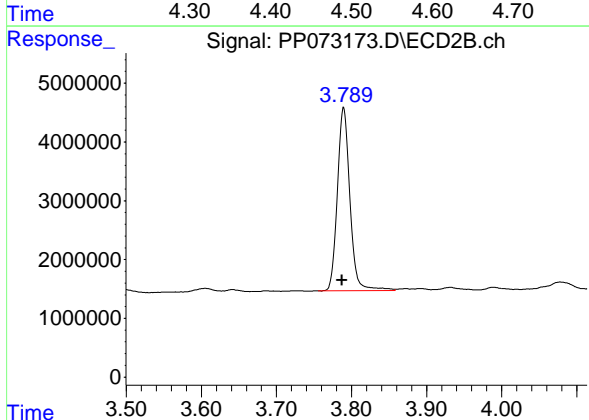
#1 Tetrachloro-m-xylene

R.T.: 4.494 min  
 Delta R.T.: 0.000 min  
 Response: 42926044  
 Conc: 20.34 ng/ml

Instrument : ECD\_P  
 Client SampleId : VNJ-207

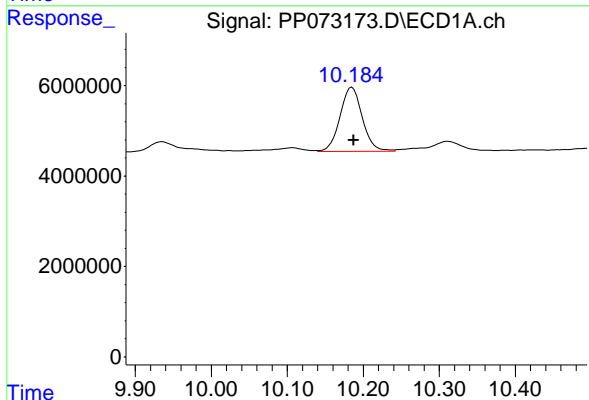
Manual Integrations  
 APPROVED

Reviewed By :Yogesh Patel 06/24/2025  
 Supervised By :mohammad ahmed 06/25/2025



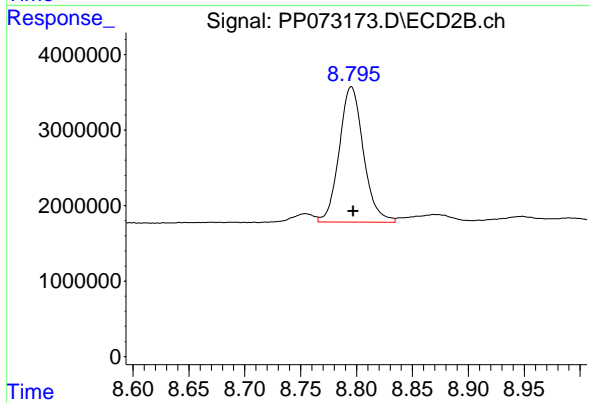
#1 Tetrachloro-m-xylene

R.T.: 3.789 min  
 Delta R.T.: 0.002 min  
 Response: 36288856  
 Conc: 20.14 ng/ml



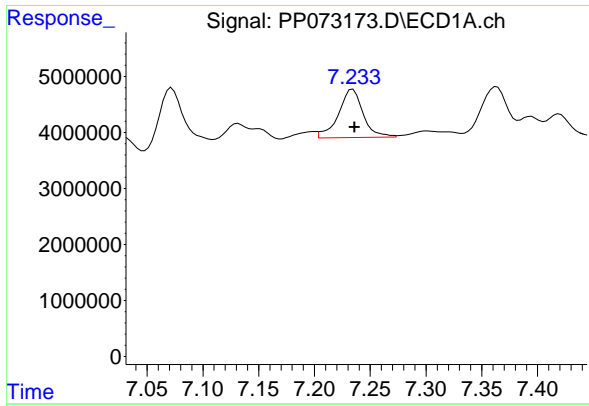
#2 Decachlorobiphenyl

R.T.: 10.185 min  
 Delta R.T.: -0.002 min  
 Response: 29102522  
 Conc: 17.03 ng/ml



#2 Decachlorobiphenyl

R.T.: 8.795 min  
 Delta R.T.: -0.002 min  
 Response: 26968474  
 Conc: 20.21 ng/ml m



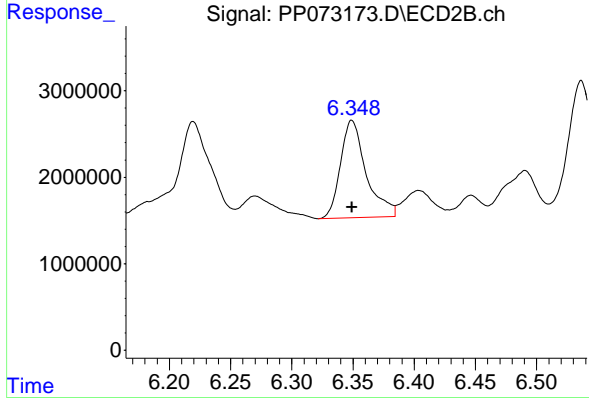
#31 AR-1260-1

R.T.: 7.233 min  
 Delta R.T.: -0.003 min  
 Response: 13155567  
 Conc: 149.13 ng/ml

Instrument : ECD\_P  
 ClientSampleId : VNJ-207

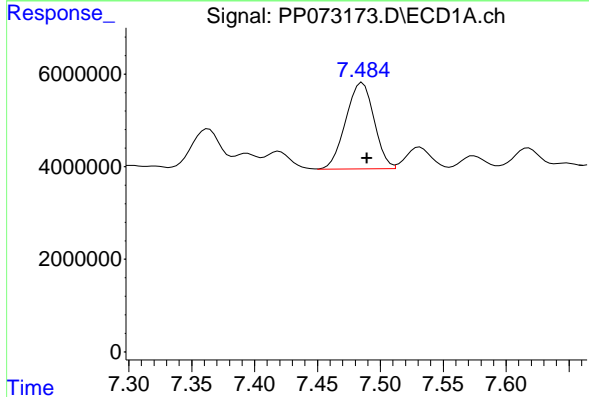
Manual Integrations  
 APPROVED

Reviewed By :Yogesh Patel 06/24/2025  
 Supervised By :mohammad ahmed 06/25/2025



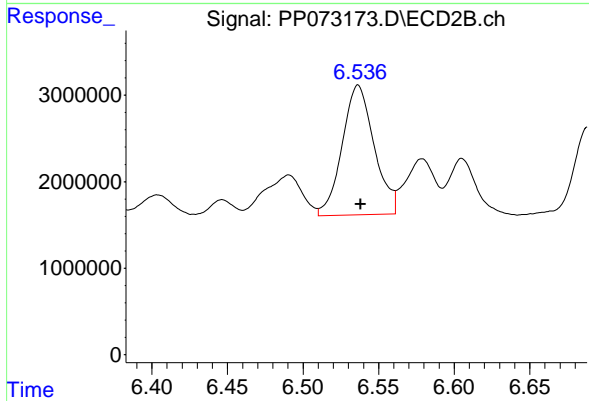
#31 AR-1260-1

R.T.: 6.349 min  
 Delta R.T.: 0.000 min  
 Response: 16497854  
 Conc: 174.16 ng/ml



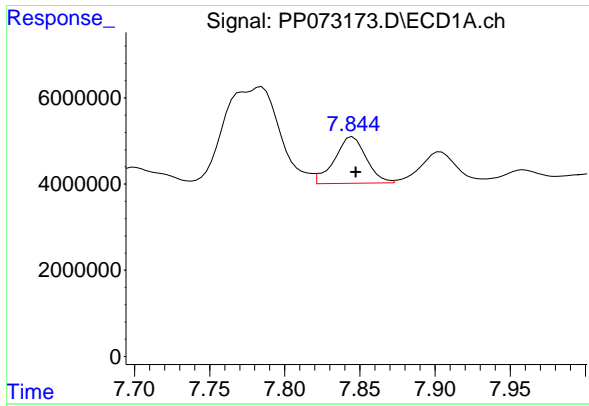
#32 AR-1260-2

R.T.: 7.484 min  
 Delta R.T.: -0.005 min  
 Response: 29226255  
 Conc: 215.08 ng/ml m



#32 AR-1260-2

R.T.: 6.536 min  
 Delta R.T.: -0.002 min  
 Response: 22134194  
 Conc: 190.10 ng/ml



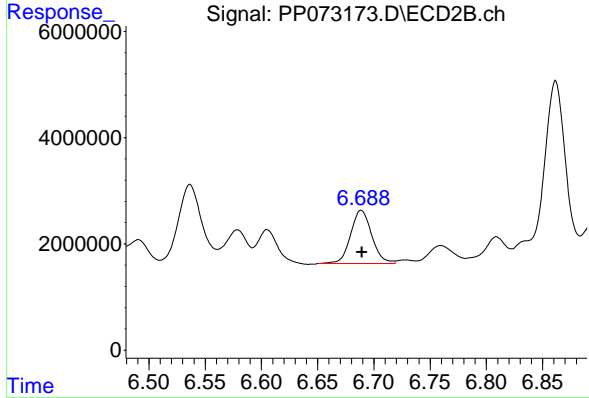
#33 AR-1260-3

R.T.: 7.845 min  
 Delta R.T.: -0.002 min  
 Response: 15999585  
 Conc: 140.16 ng/ml

Instrument : ECD\_P  
 Client SampleId : VNJ-207

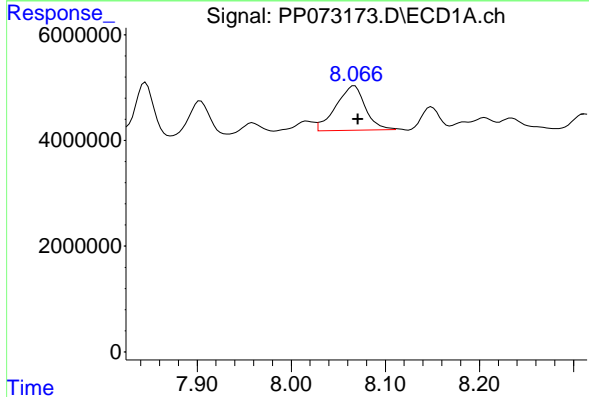
Manual Integrations  
 APPROVED

Reviewed By :Yogesh Patel 06/24/2025  
 Supervised By :mohammad ahmed 06/25/2025



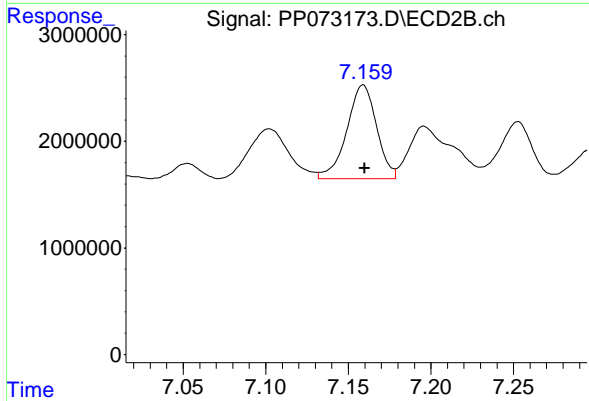
#33 AR-1260-3

R.T.: 6.689 min  
 Delta R.T.: 0.000 min  
 Response: 13116720  
 Conc: 125.93 ng/ml



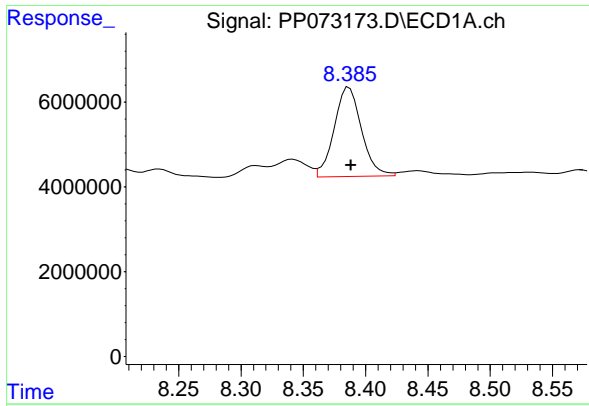
#34 AR-1260-4

R.T.: 8.066 min  
 Delta R.T.: -0.005 min  
 Response: 18122646  
 Conc: 175.87 ng/ml m



#34 AR-1260-4

R.T.: 7.159 min  
 Delta R.T.: -0.001 min  
 Response: 11043789  
 Conc: 125.87 ng/ml



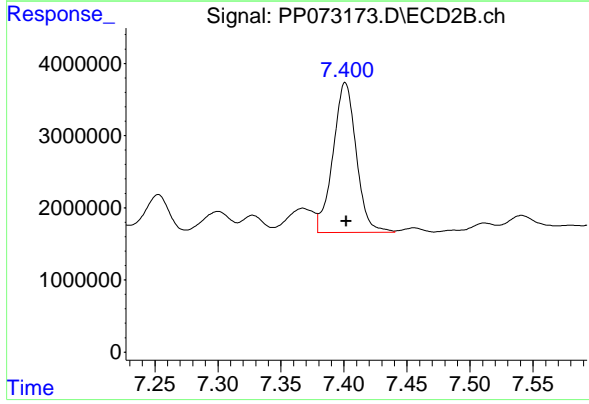
#35 AR-1260-5

R.T.: 8.387 min  
 Delta R.T.: -0.002 min  
 Response: 32081946  
 Conc: 133.33 ng/ml

Instrument :  
 ECD\_P  
 ClientSampleId :  
 VNJ-207

Manual Integrations  
 APPROVED

Reviewed By :Yogesh Patel 06/24/2025  
 Supervised By :mohammad ahmed 06/25/2025



#35 AR-1260-5

R.T.: 7.401 min  
 Delta R.T.: 0.000 min  
 Response: 26621331  
 Conc: 124.75 ng/ml