

Data Path : Z:\pestpcbsrv\HPCHEM1\ECD\_P\Data\PP062325\  
 Data File : PP073174.D  
 Signal(s) : Signal #1: ECD1A.ch Signal #2: ECD2B.ch  
 Acq On : 23 Jun 2025 15:07  
 Operator : YP\AJ  
 Sample : Q2381-05  
 Misc :  
 ALS Vial : 16 Sample Multiplier: 1

**Instrument :**  
 ECD\_P  
**ClientSampleId :**  
 72-11929

**Manual Integrations**  
**APPROVED**  
 Reviewed By :Yogesh Patel 06/24/2025  
 Supervised By :mohammad ahmed 06/25/2025

Integration File signal 1: autoint1.e  
 Integration File signal 2: autoint2.e  
 Quant Time: Jun 24 01:44:30 2025  
 Quant Method : Z:\pestpcbsrv\HPCHEM1\ECD\_P\methods\PP061725.M  
 Quant Title : GC EXTRACTABLES  
 QLast Update : Wed Jun 18 08:17:15 2025  
 Response via : Initial Calibration  
 Integrator: ChemStation

Volume Inj. : 2 µl  
 Signal #1 Phase : ZB-MR1 Signal #2 Phase: ZB-MR2  
 Signal #1 Info : 30Mx0.32mmx 0.50µ Signal #2 Info : 30M x 0.32mm x 0.25µm

Compound	RT#1	RT#2	Resp#1	Resp#2	ng/ml	ng/ml
-----						
System Monitoring Compounds						
1) SA Tetrachlo...	4.494	3.790	41888772	35787879	19.845	19.862
2) SA Decachlor...	10.186	8.796	33857421	30160243	19.812	22.597m
Target Compounds						
26) L6 AR-1254-1	6.491	5.669	11068107	12913468	131.491	117.770
27) L6 AR-1254-2	6.708	5.818	16907442	14734935	134.827	155.849
28) L6 AR-1254-3	7.073	6.220	23899987	29117691	182.149	197.345
29) L6 AR-1254-4	7.353	6.447	13814491	9515802	115.328	97.999
30) L6 AR-1254-5	7.787	6.862	61130176	58939995	535.026	453.515
31) L7 AR-1260-1	7.236	6.350	7642069	13420223	86.632	141.667 #
32) L7 AR-1260-2	7.482	6.539	29927876	16610007	220.246	142.653 #
33) L7 AR-1260-3	7.846	6.689	5562105	8761684	48.725	84.117 #
34) L7 AR-1260-4	8.065	7.162	16467056	8346026	159.804	95.124 #
35) L7 AR-1260-5	8.387	7.401	9579550	7988818	39.812	37.436
-----						

(f)=RT Delta > 1/2 Window (#)=Amounts differ by > 25% (m)=manual int.

Data Path : Z:\pestpcbsrv\HPCHEM1\ECD\_P\Data\PP062325\  
 Data File : PP073174.D  
 Signal(s) : Signal #1: ECD1A.ch Signal #2: ECD2B.ch  
 Acq On : 23 Jun 2025 15:07  
 Operator : YP\AJ  
 Sample : Q2381-05  
 Misc :  
 ALS Vial : 16 Sample Multiplier: 1

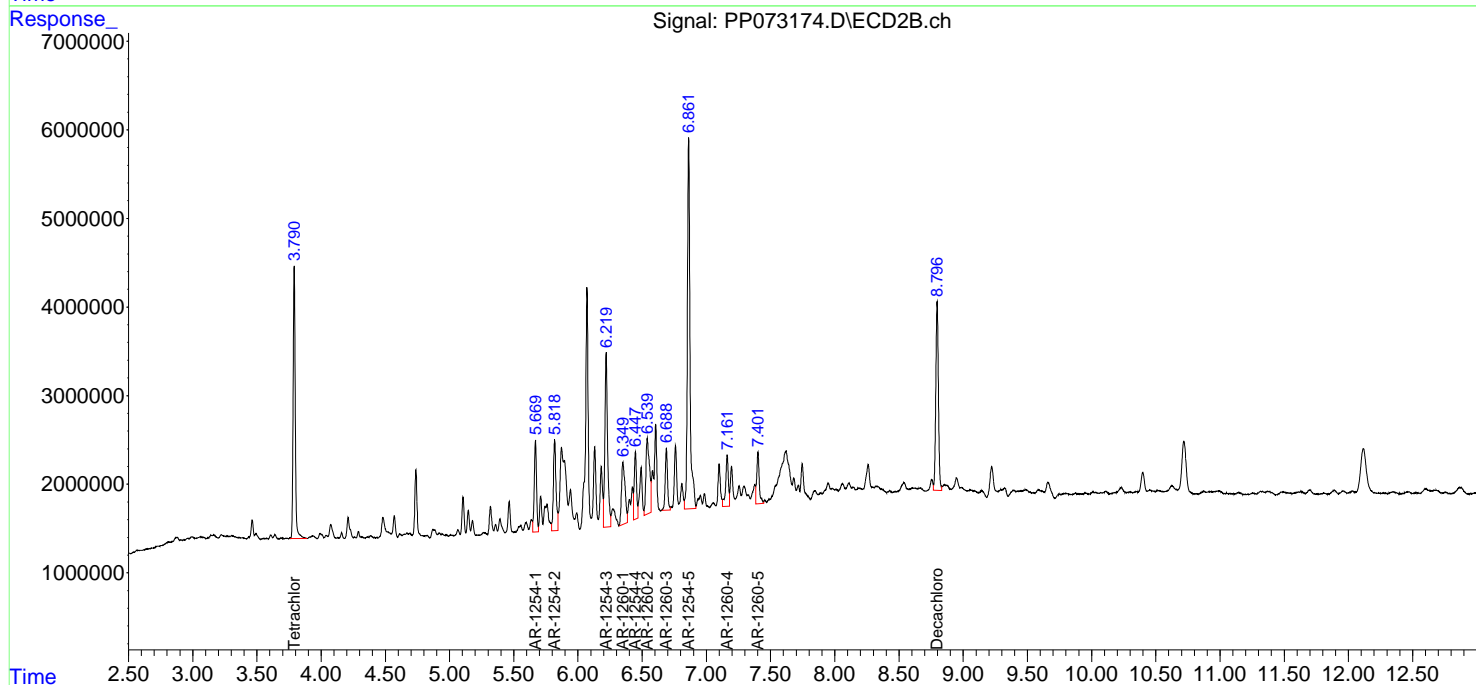
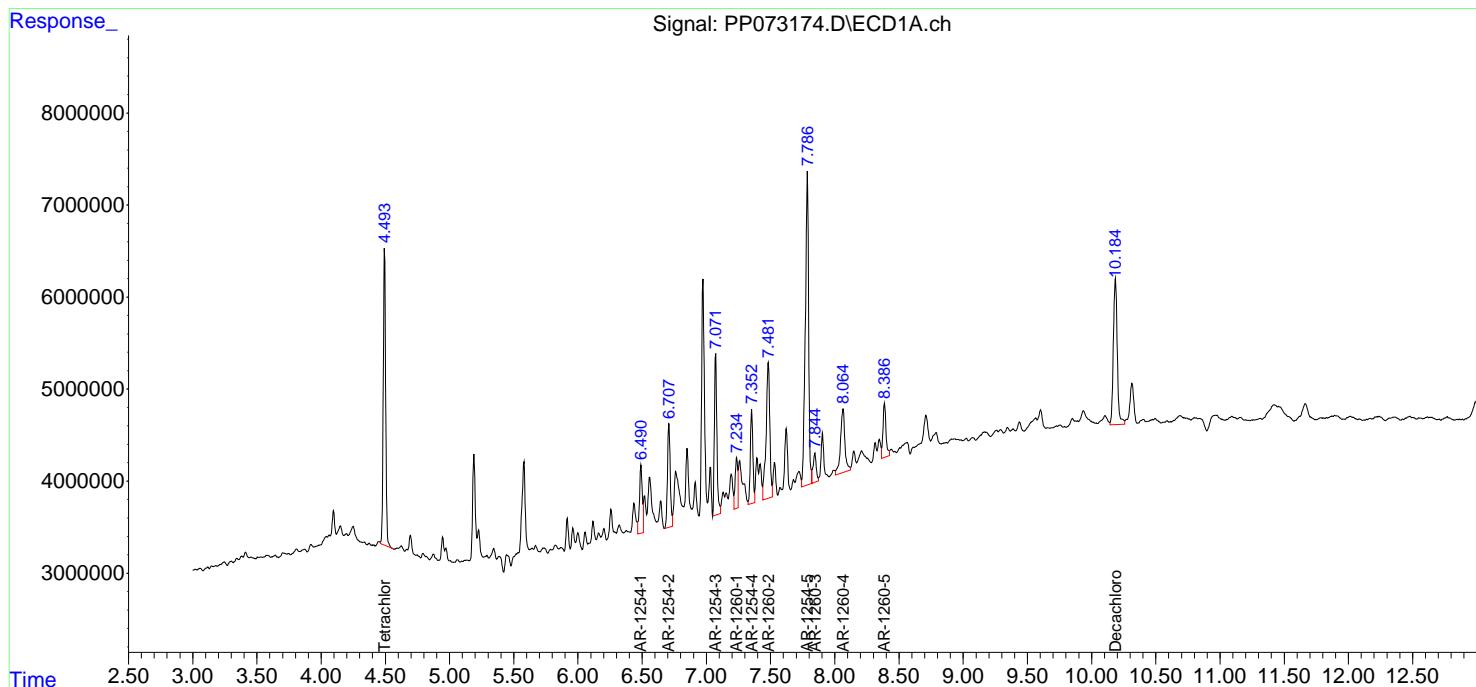
**Instrument :**  
 ECD\_P  
**ClientSampleId :**  
 72-11929

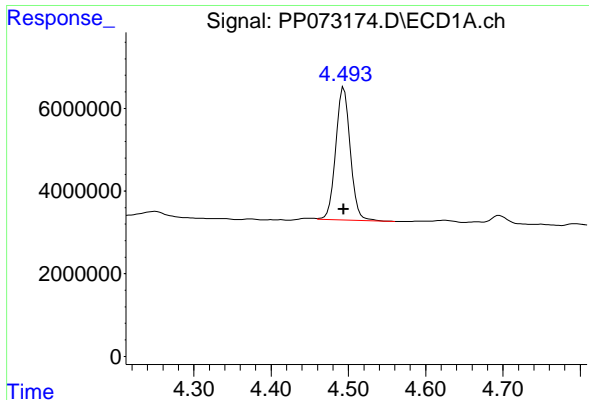
**Manual Integrations**  
**APPROVED**

Reviewed By :Yogesh Patel 06/24/2025  
 Supervised By :mohammad ahmed 06/25/2025

Integration File signal 1: autoint1.e  
 Integration File signal 2: autoint2.e  
 Quant Time: Jun 24 01:44:30 2025  
 Quant Method : Z:\pestpcbsrv\HPCHEM1\ECD\_P\methods\PP061725.M  
 Quant Title : GC EXTRACTABLES  
 QLast Update : Wed Jun 18 08:17:15 2025  
 Response via : Initial Calibration  
 Integrator: ChemStation

Volume Inj. : 2 µl  
 Signal #1 Phase : ZB-MR1 Signal #2 Phase: ZB-MR2  
 Signal #1 Info : 30Mx0.32mmx 0.50µm Signal #2 Info : 30M x 0.32mm x 0.25µm





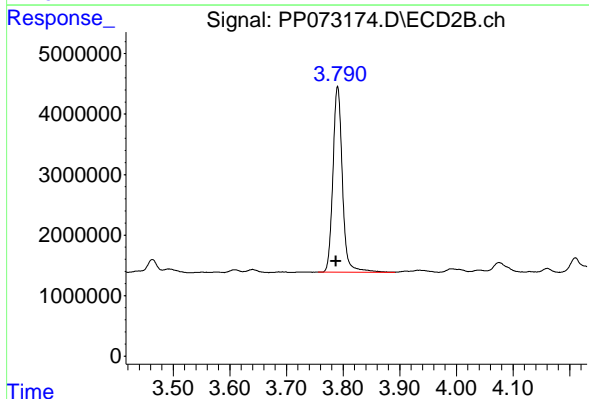
#1 Tetrachloro-m-xylene

R.T.: 4.494 min  
 Delta R.T.: 0.000 min  
 Response: 41888772  
 Conc: 19.84 ng/ml

Instrument : ECD\_P  
 Client SampleId : 72-11929

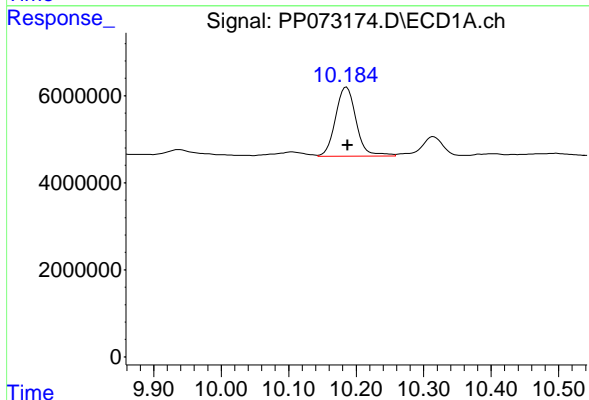
Manual Integrations  
 APPROVED

Reviewed By :Yogesh Patel 06/24/2025  
 Supervised By :mohammad ahmed 06/25/2025



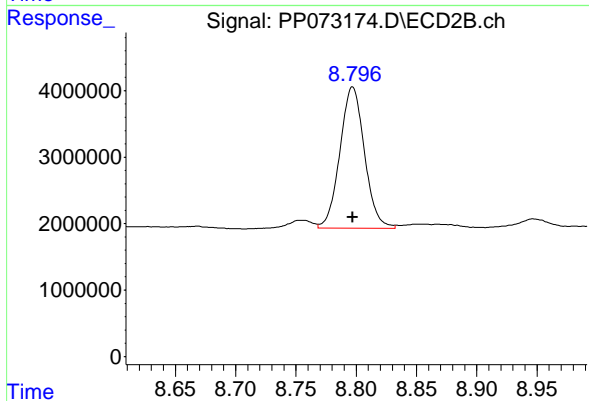
#1 Tetrachloro-m-xylene

R.T.: 3.790 min  
 Delta R.T.: 0.003 min  
 Response: 35787879  
 Conc: 19.86 ng/ml



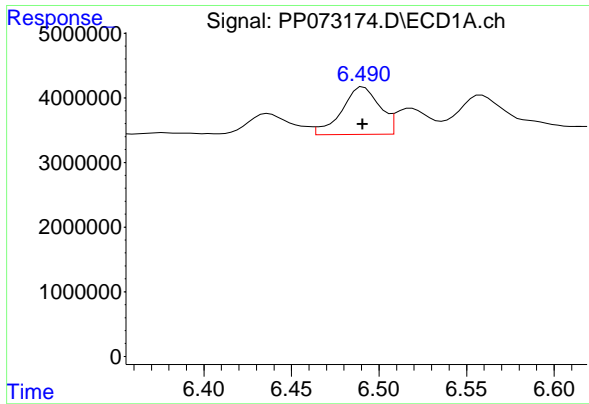
#2 Decachlorobiphenyl

R.T.: 10.186 min  
 Delta R.T.: -0.001 min  
 Response: 33857421  
 Conc: 19.81 ng/ml



#2 Decachlorobiphenyl

R.T.: 8.796 min  
 Delta R.T.: 0.000 min  
 Response: 30160243  
 Conc: 22.60 ng/ml m



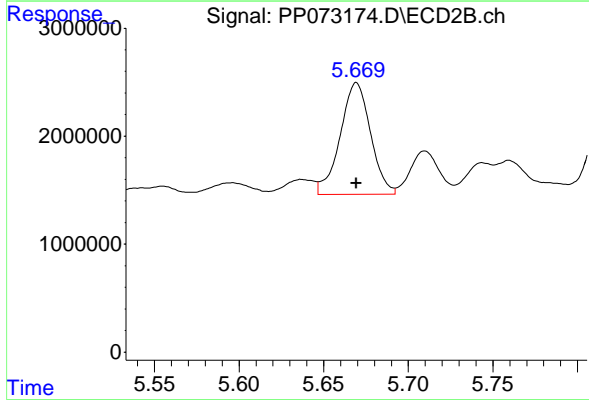
#26 AR-1254-1

R.T.: 6.491 min  
 Delta R.T.: 0.000 min  
 Response: 11068107  
 Conc: 131.49 ng/ml

Instrument : ECD\_P  
 Client Sample Id : 72-11929

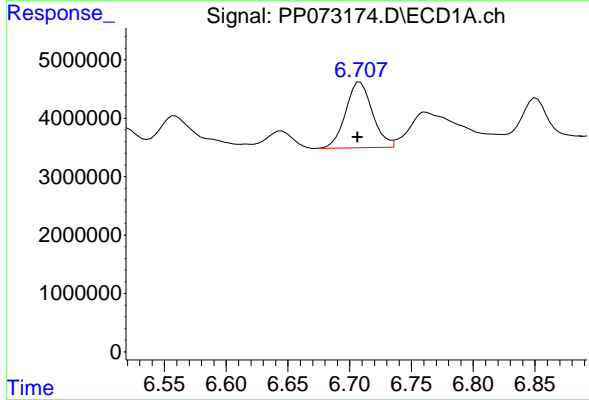
Manual Integrations  
 APPROVED

Reviewed By :Yogesh Patel 06/24/2025  
 Supervised By :mohammad ahmed 06/25/2025



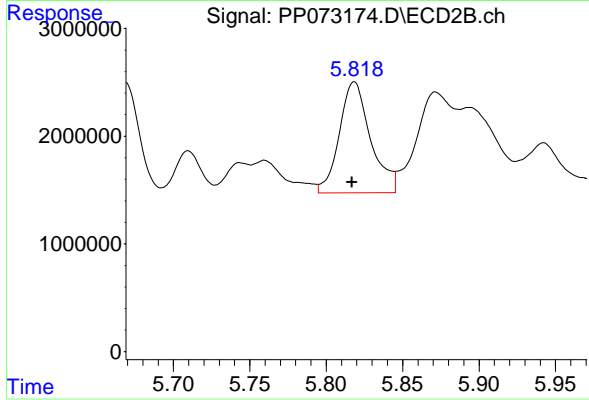
#26 AR-1254-1

R.T.: 5.669 min  
 Delta R.T.: 0.000 min  
 Response: 12913468  
 Conc: 117.77 ng/ml



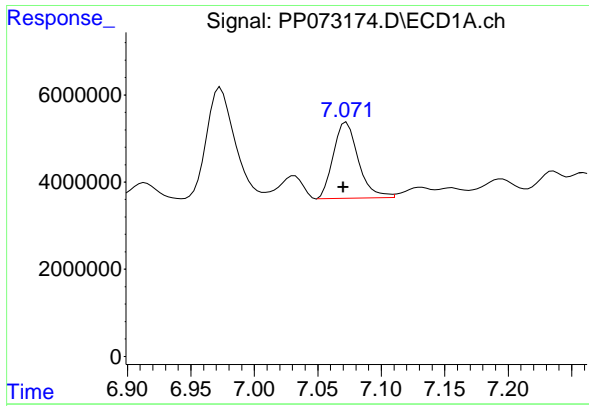
#27 AR-1254-2

R.T.: 6.708 min  
 Delta R.T.: 0.002 min  
 Response: 16907442  
 Conc: 134.83 ng/ml



#27 AR-1254-2

R.T.: 5.818 min  
 Delta R.T.: 0.001 min  
 Response: 14734935  
 Conc: 155.85 ng/ml



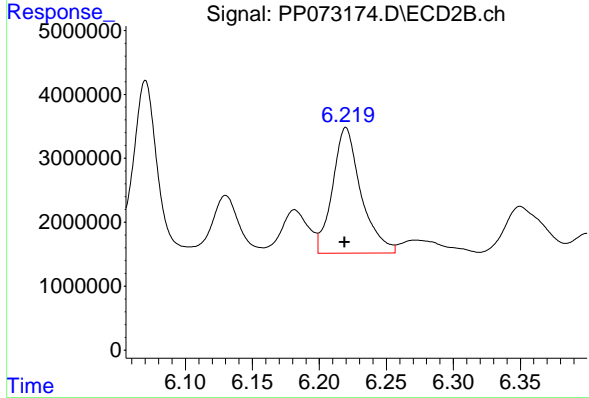
#28 AR-1254-3

R.T.: 7.073 min  
 Delta R.T.: 0.003 min  
 Response: 23899987  
 Conc: 182.15 ng/ml

Instrument : ECD\_P  
 Client Sample Id : 72-11929

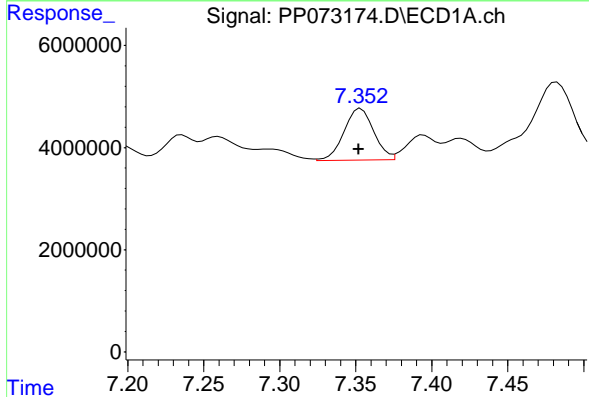
Manual Integrations  
 APPROVED

Reviewed By :Yogesh Patel 06/24/2025  
 Supervised By :mohammad ahmed 06/25/2025



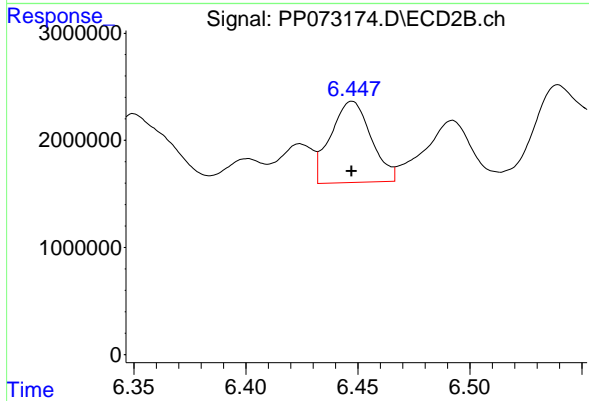
#28 AR-1254-3

R.T.: 6.220 min  
 Delta R.T.: 0.000 min  
 Response: 29117691  
 Conc: 197.34 ng/ml



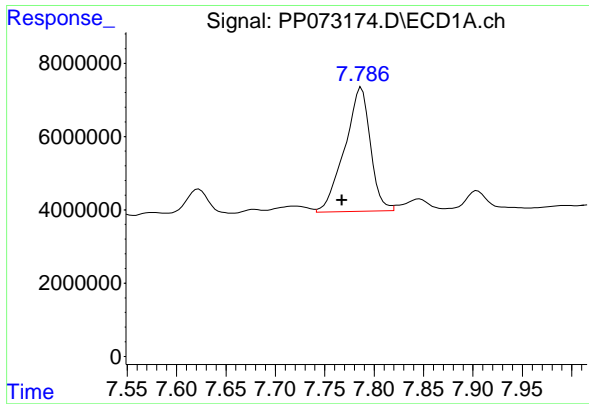
#29 AR-1254-4

R.T.: 7.353 min  
 Delta R.T.: 0.001 min  
 Response: 13814491  
 Conc: 115.33 ng/ml



#29 AR-1254-4

R.T.: 6.447 min  
 Delta R.T.: 0.000 min  
 Response: 9515802  
 Conc: 98.00 ng/ml



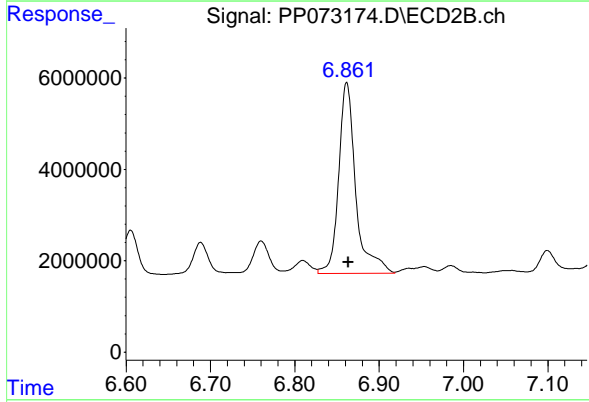
#30 AR-1254-5

R.T.: 7.787 min  
 Delta R.T.: 0.019 min  
 Response: 61130176  
 Conc: 535.03 ng/ml

Instrument : ECD\_P  
 Client SampleId : 72-11929

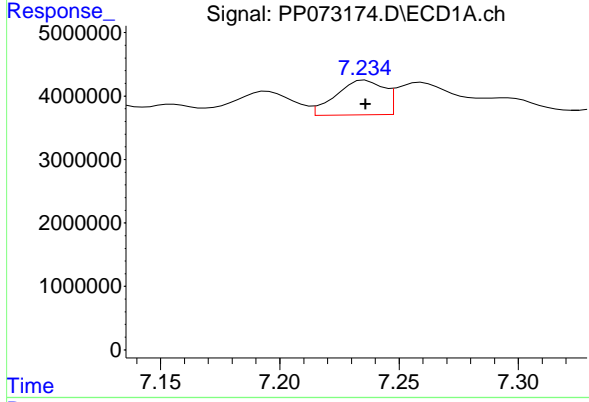
Manual Integrations  
 APPROVED

Reviewed By :Yogesh Patel 06/24/2025  
 Supervised By :mohammad ahmed 06/25/2025



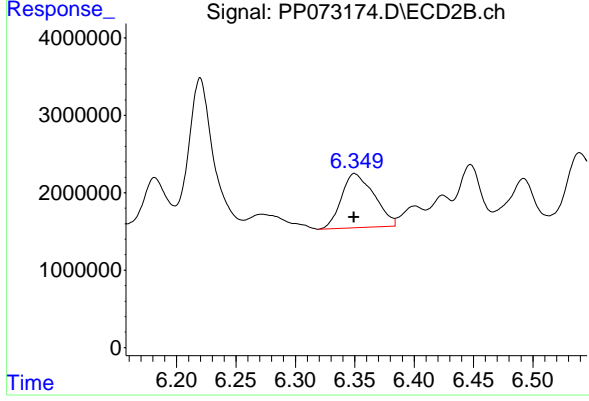
#30 AR-1254-5

R.T.: 6.862 min  
 Delta R.T.: -0.002 min  
 Response: 58939995  
 Conc: 453.51 ng/ml



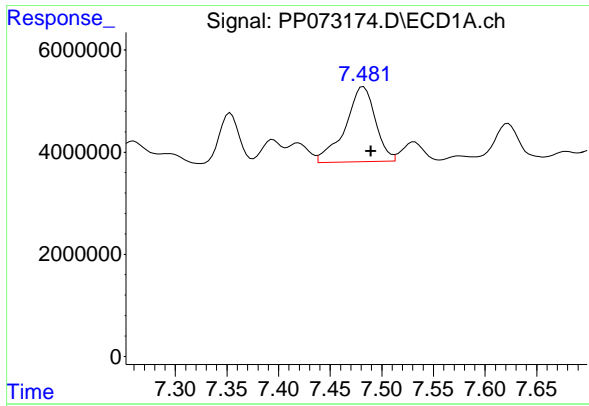
#31 AR-1260-1

R.T.: 7.236 min  
 Delta R.T.: 0.000 min  
 Response: 7642069  
 Conc: 86.63 ng/ml



#31 AR-1260-1

R.T.: 6.350 min  
 Delta R.T.: 0.000 min  
 Response: 13420223  
 Conc: 141.67 ng/ml



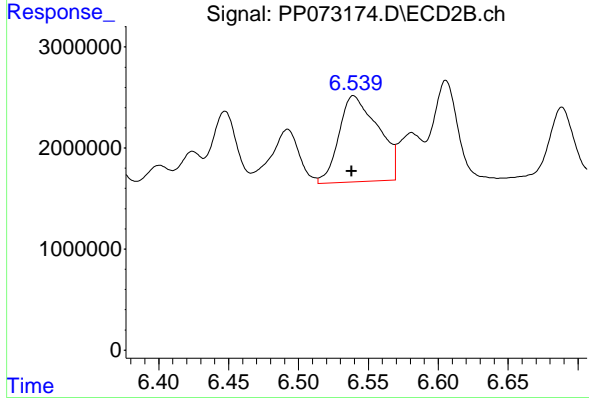
#32 AR-1260-2

R.T.: 7.482 min  
 Delta R.T.: -0.007 min  
 Response: 29927876  
 Conc: 220.25 ng/ml

Instrument :  
 ECD\_P  
 ClientSampleId :  
 72-11929

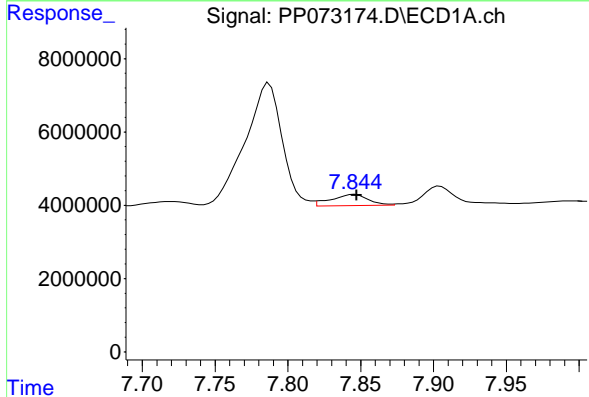
Manual Integrations  
 APPROVED

Reviewed By :Yogesh Patel 06/24/2025  
 Supervised By :mohammad ahmed 06/25/2025



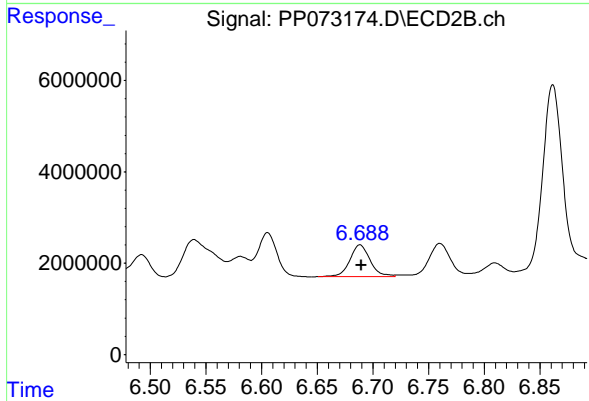
#32 AR-1260-2

R.T.: 6.539 min  
 Delta R.T.: 0.001 min  
 Response: 16610007  
 Conc: 142.65 ng/ml



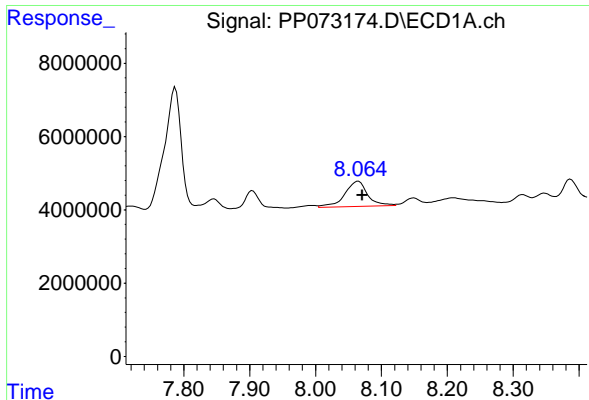
#33 AR-1260-3

R.T.: 7.846 min  
 Delta R.T.: -0.001 min  
 Response: 5562105  
 Conc: 48.73 ng/ml



#33 AR-1260-3

R.T.: 6.689 min  
 Delta R.T.: 0.000 min  
 Response: 8761684  
 Conc: 84.12 ng/ml



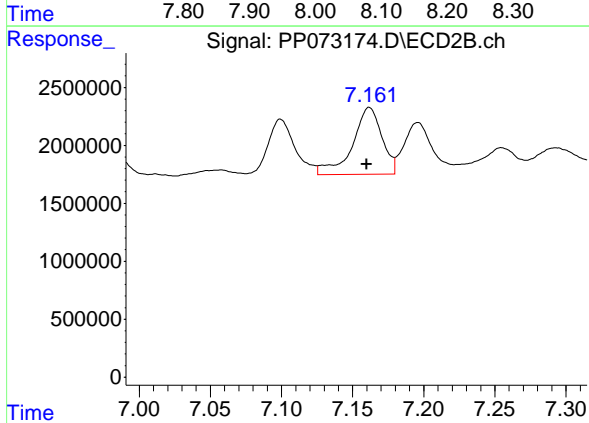
#34 AR-1260-4

R.T.: 8.065 min  
 Delta R.T.: -0.006 min  
 Response: 16467056  
 Conc: 159.80 ng/ml

Instrument : ECD\_P  
 Client Sample Id : 72-11929

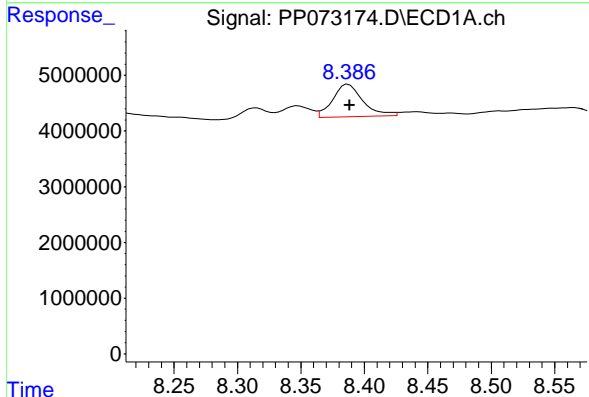
Manual Integrations  
 APPROVED

Reviewed By :Yogesh Patel 06/24/2025  
 Supervised By :mohammad ahmed 06/25/2025



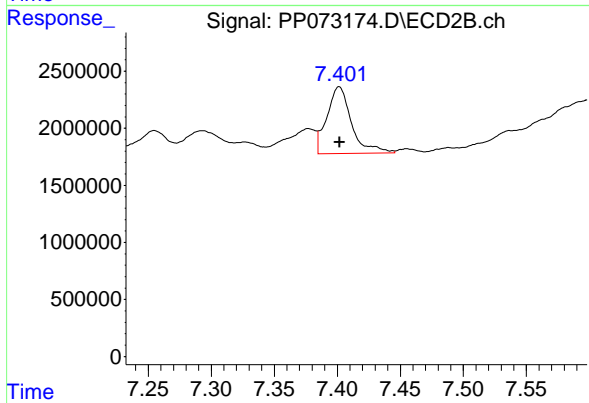
#34 AR-1260-4

R.T.: 7.162 min  
 Delta R.T.: 0.002 min  
 Response: 8346026  
 Conc: 95.12 ng/ml



#35 AR-1260-5

R.T.: 8.387 min  
 Delta R.T.: -0.001 min  
 Response: 9579550  
 Conc: 39.81 ng/ml



#35 AR-1260-5

R.T.: 7.401 min  
 Delta R.T.: 0.000 min  
 Response: 7988818  
 Conc: 37.44 ng/ml