

Data Path : Z:\pestpcbsrv\HPCHEM1\ECD_P\Data\PP062325\
 Data File : PP073176.D
 Signal(s) : Signal #1: ECD1A.ch Signal #2: ECD2B.ch
 Acq On : 23 Jun 2025 16:29
 Operator : YP\AJ
 Sample : AR1242CCC500
 Misc :
 ALS Vial : 4 Sample Multiplier: 1

Instrument :
 ECD_P
ClientSampleId :
 AR1242CCC500

Integration File signal 1: autoint1.e
 Integration File signal 2: autoint2.e
 Quant Time: Jun 24 01:44:56 2025
 Quant Method : Z:\pestpcbsrv\HPCHEM1\ECD_P\methods\PP061725.M
 Quant Title : GC EXTRACTABLES
 QLast Update : Wed Jun 18 08:17:15 2025
 Response via : Initial Calibration
 Integrator: ChemStation

Volume Inj. : 2 µl
 Signal #1 Phase : ZB-MR1 Signal #2 Phase: ZB-MR2
 Signal #1 Info : 30Mx0.32mmx 0.50µ Signal #2 Info : 30M x 0.32mm x 0.25µm

Compound	RT#1	RT#2	Resp#1	Resp#2	ng/ml	ng/ml

System Monitoring Compounds						
1) SA Tetrachlo...	4.496	3.790	100.5E6	84128209	47.634	46.691
2) SA Decachlor...	10.187	8.797	82087837	63089086	48.036	47.268
Target Compounds						
16) L4 AR-1242-1	5.647	4.869	29649711	27112244	507.377	490.995
17) L4 AR-1242-2	5.669	4.887	44128333	40065286	509.834	504.052
18) L4 AR-1242-3	5.731	5.064	27306822	21903246	518.081	505.790
19) L4 AR-1242-4	5.828	5.147	22872941	21102601	520.334	508.449
20) L4 AR-1242-5	6.557	5.670	25158295	26536749	507.636	504.630

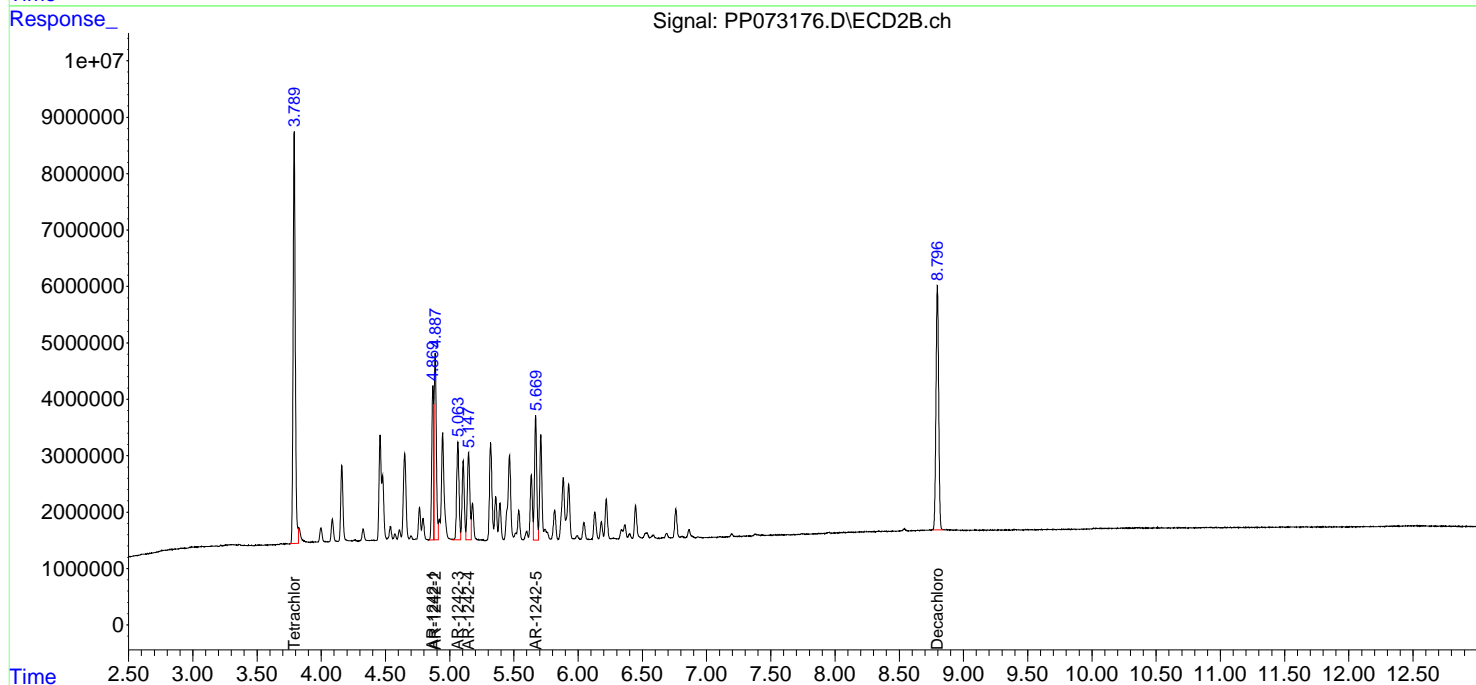
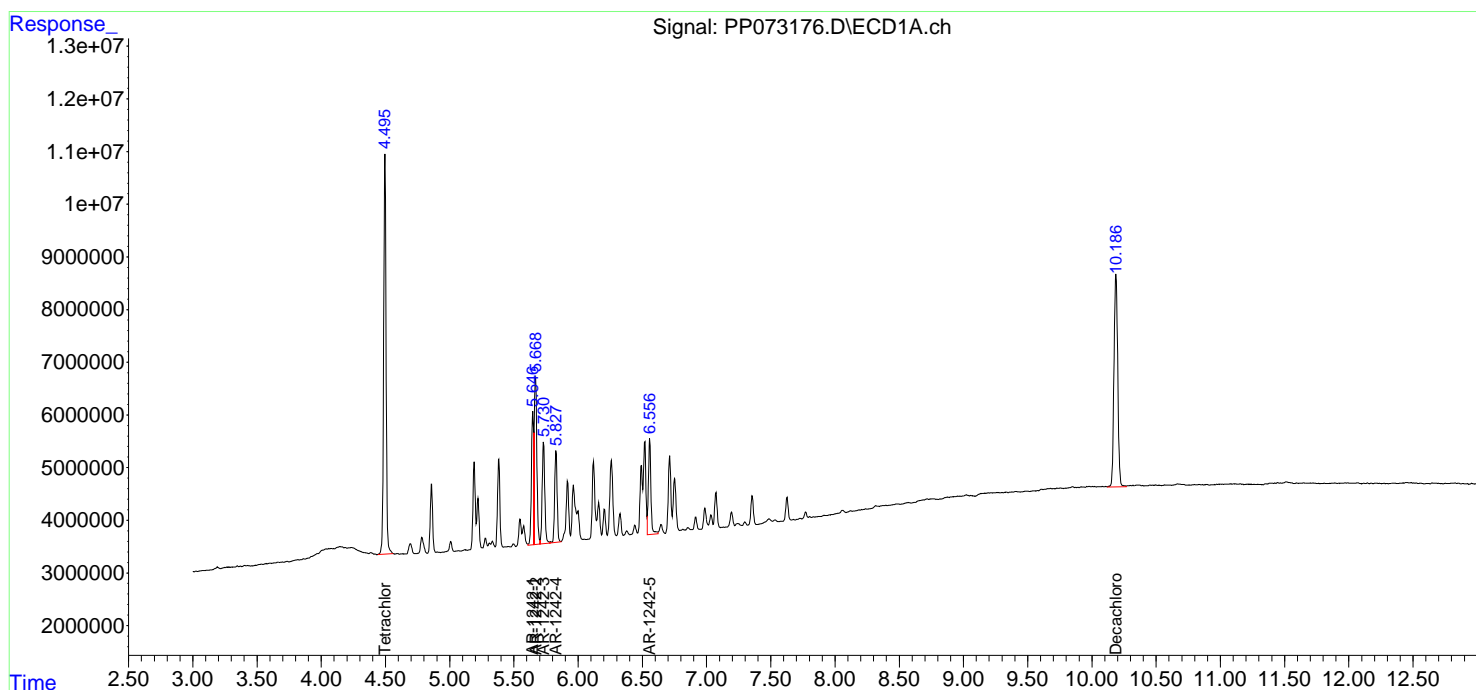
(f)=RT Delta > 1/2 Window (#)=Amounts differ by > 25% (m)=manual int.

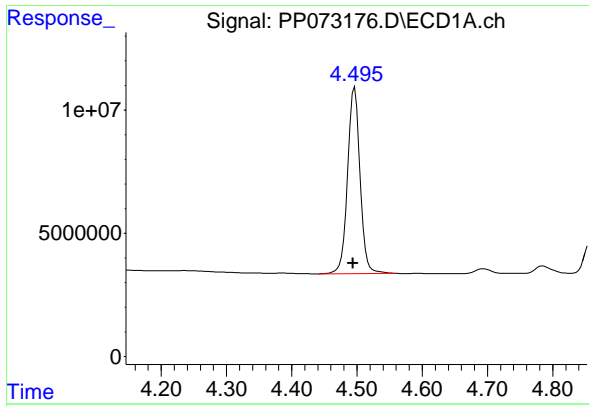
Data Path : Z:\pestpcbsrv\HPCHEM1\ECD_P\Data\PP062325\
 Data File : PP073176.D
 Signal(s) : Signal #1: ECD1A.ch Signal #2: ECD2B.ch
 Acq On : 23 Jun 2025 16:29
 Operator : YP\AJ
 Sample : AR1242CCC500
 Misc :
 ALS Vial : 4 Sample Multiplier: 1

Instrument :
 ECD_P
 ClientSampleId :
 AR1242CCC500

Integration File signal 1: autoint1.e
 Integration File signal 2: autoint2.e
 Quant Time: Jun 24 01:44:56 2025
 Quant Method : Z:\pestpcbsrv\HPCHEM1\ECD_P\methods\PP061725.M
 Quant Title : GC EXTRACTABLES
 QLast Update : Wed Jun 18 08:17:15 2025
 Response via : Initial Calibration
 Integrator: ChemStation

Volume Inj. : 2 µl
 Signal #1 Phase : ZB-MR1 Signal #2 Phase: ZB-MR2
 Signal #1 Info : 30Mx0.32mmx 0.50µm Signal #2 Info : 30M x 0.32mm x 0.25µm

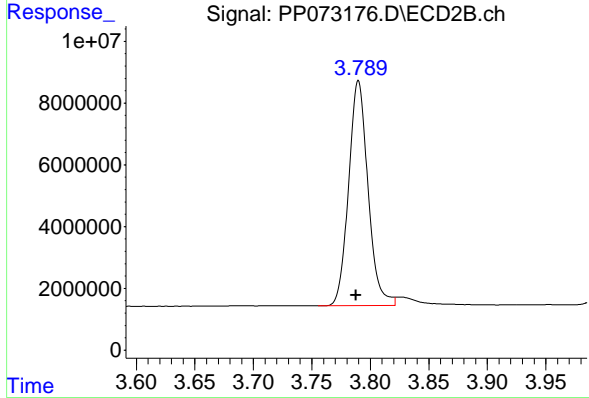




#1 Tetrachloro-m-xylene

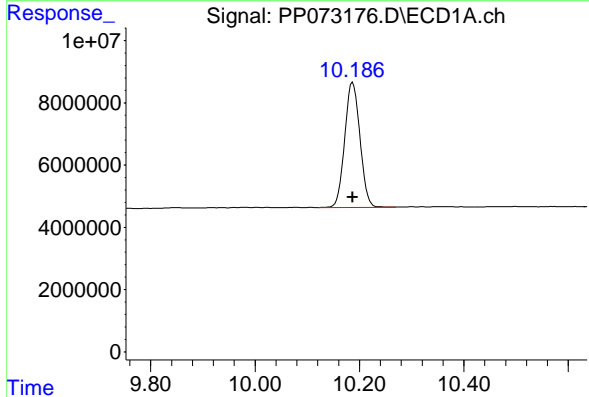
R.T.: 4.496 min
 Delta R.T.: 0.002 min
 Response: 100546562
 Conc: 47.63 ng/ml

Instrument : ECD_P
 ClientSampleId : AR1242CCC500



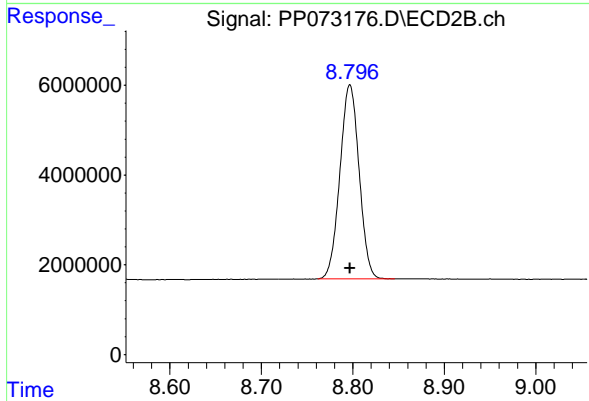
#1 Tetrachloro-m-xylene

R.T.: 3.790 min
 Delta R.T.: 0.002 min
 Response: 84128209
 Conc: 46.69 ng/ml



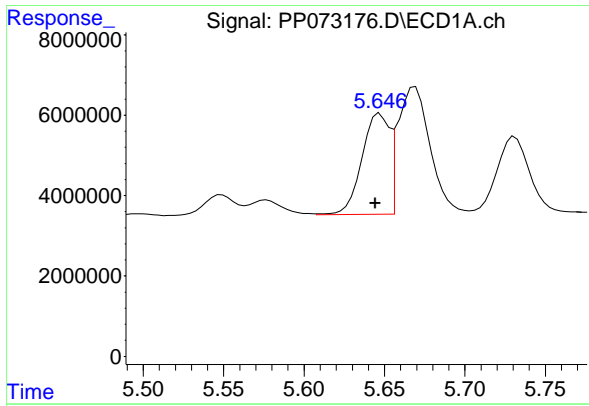
#2 Decachlorobiphenyl

R.T.: 10.187 min
 Delta R.T.: 0.000 min
 Response: 82087837
 Conc: 48.04 ng/ml



#2 Decachlorobiphenyl

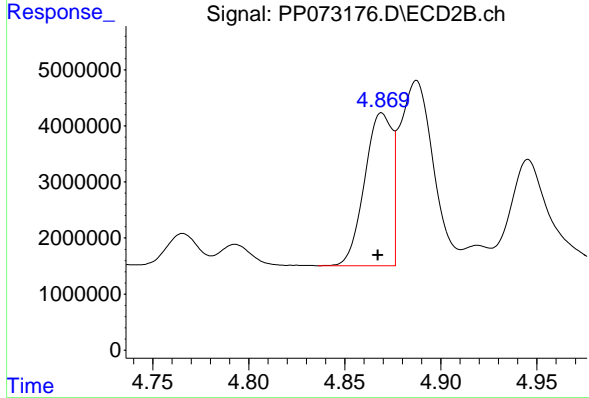
R.T.: 8.797 min
 Delta R.T.: 0.000 min
 Response: 63089086
 Conc: 47.27 ng/ml



#16 AR-1242-1

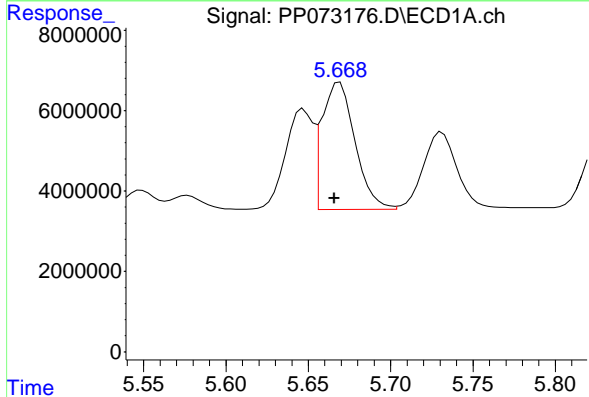
R.T.: 5.647 min
 Delta R.T.: 0.003 min
 Response: 29649711
 Conc: 507.38 ng/ml

Instrument :
 ECD_P
 ClientSampleId :
 AR1242CCC500



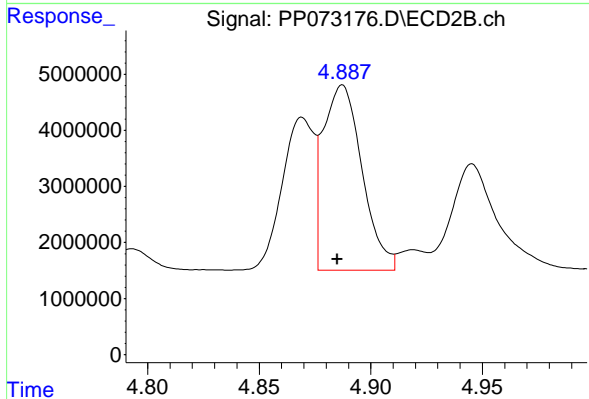
#16 AR-1242-1

R.T.: 4.869 min
 Delta R.T.: 0.002 min
 Response: 27112244
 Conc: 490.99 ng/ml



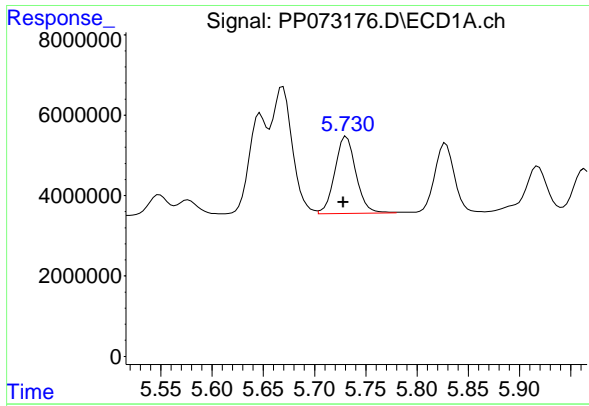
#17 AR-1242-2

R.T.: 5.669 min
 Delta R.T.: 0.003 min
 Response: 44128333
 Conc: 509.83 ng/ml



#17 AR-1242-2

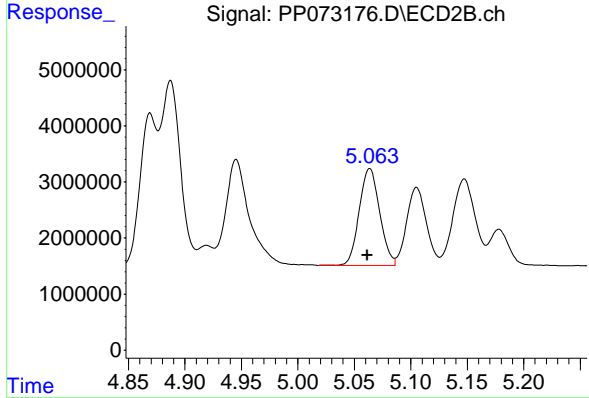
R.T.: 4.887 min
 Delta R.T.: 0.002 min
 Response: 40065286
 Conc: 504.05 ng/ml



#18 AR-1242-3

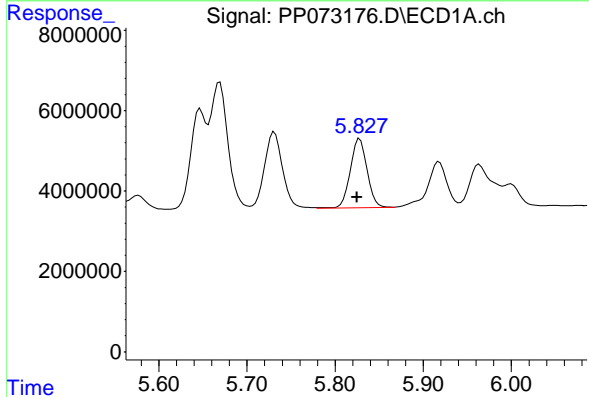
R.T.: 5.731 min
 Delta R.T.: 0.003 min
 Response: 27306822
 Conc: 518.08 ng/ml

Instrument : ECD_P
 ClientSampleId : AR1242CCC500



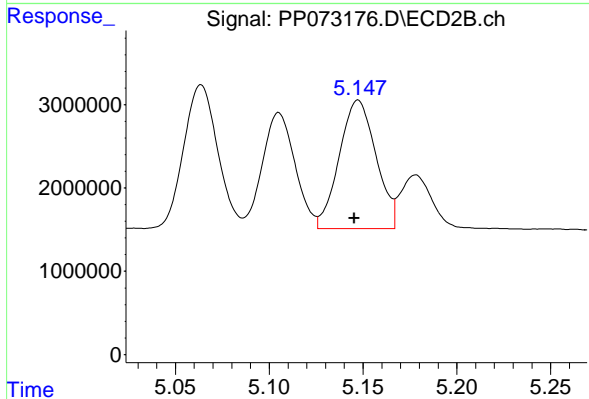
#18 AR-1242-3

R.T.: 5.064 min
 Delta R.T.: 0.002 min
 Response: 21903246
 Conc: 505.79 ng/ml



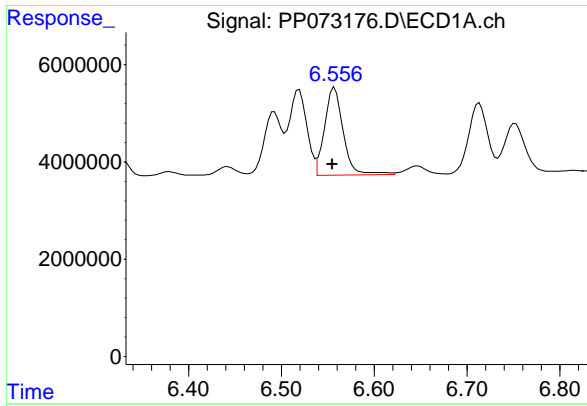
#19 AR-1242-4

R.T.: 5.828 min
 Delta R.T.: 0.003 min
 Response: 22872941
 Conc: 520.33 ng/ml



#19 AR-1242-4

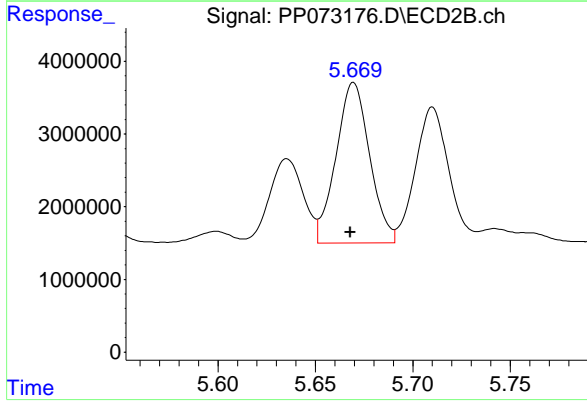
R.T.: 5.147 min
 Delta R.T.: 0.002 min
 Response: 21102601
 Conc: 508.45 ng/ml



#20 AR-1242-5

R.T.: 6.557 min
 Delta R.T.: 0.002 min
 Response: 25158295
 Conc: 507.64 ng/ml

Instrument :
 ECD_P
 ClientSampleId :
 AR1242CCC500



#20 AR-1242-5

R.T.: 5.670 min
 Delta R.T.: 0.002 min
 Response: 26536749
 Conc: 504.63 ng/ml