

Data Path : Z:\pestpcbsrv\HPCHEM1\ECD\_P\Data\PP062325\  
 Data File : PP073184.D  
 Signal(s) : Signal #1: ECD1A.ch Signal #2: ECD2B.ch  
 Acq On : 23 Jun 2025 18:40  
 Operator : YP\AJ  
 Sample : Q2388-01  
 Misc :  
 ALS Vial : 20 Sample Multiplier: 1

**Instrument :**  
 ECD\_P  
**ClientSampleId :**  
 TP-12

**Manual Integrations**  
**APPROVED**  
 Reviewed By :Yogesh Patel 06/24/2025  
 Supervised By :mohammad ahmed 06/25/2025

Integration File signal 1: autoint1.e  
 Integration File signal 2: autoint2.e  
 Quant Time: Jun 24 01:46:39 2025  
 Quant Method : Z:\pestpcbsrv\HPCHEM1\ECD\_P\methods\PP061725.M  
 Quant Title : GC EXTRACTABLES  
 QLast Update : Wed Jun 18 08:17:15 2025  
 Response via : Initial Calibration  
 Integrator: ChemStation

Volume Inj. : 2 µl  
 Signal #1 Phase : ZB-MR1 Signal #2 Phase: ZB-MR2  
 Signal #1 Info : 30Mx0.32mmx 0.50µ Signal #2 Info : 30M x 0.32mm x 0.25µm

Compound	RT#1	RT#2	Resp#1	Resp#2	ng/ml	ng/ml
-----						
System Monitoring Compounds						
1) SA Tetrachlo...	4.495	3.788	26817679	28496360	12.705	15.816m
2) SA Decachlor...	10.187	8.795	25961769	20823902	15.192	15.602

Target Compounds

(f)=RT Delta > 1/2 Window (#)=Amounts differ by > 25% (m)=manual int.

Data Path : Z:\pestpcbsrv\HPCHEM1\ECD\_P\Data\PP062325\  
 Data File : PP073184.D  
 Signal(s) : Signal #1: ECD1A.ch Signal #2: ECD2B.ch  
 Acq On : 23 Jun 2025 18:40  
 Operator : YP\AJ  
 Sample : Q2388-01  
 Misc :  
 ALS Vial : 20 Sample Multiplier: 1

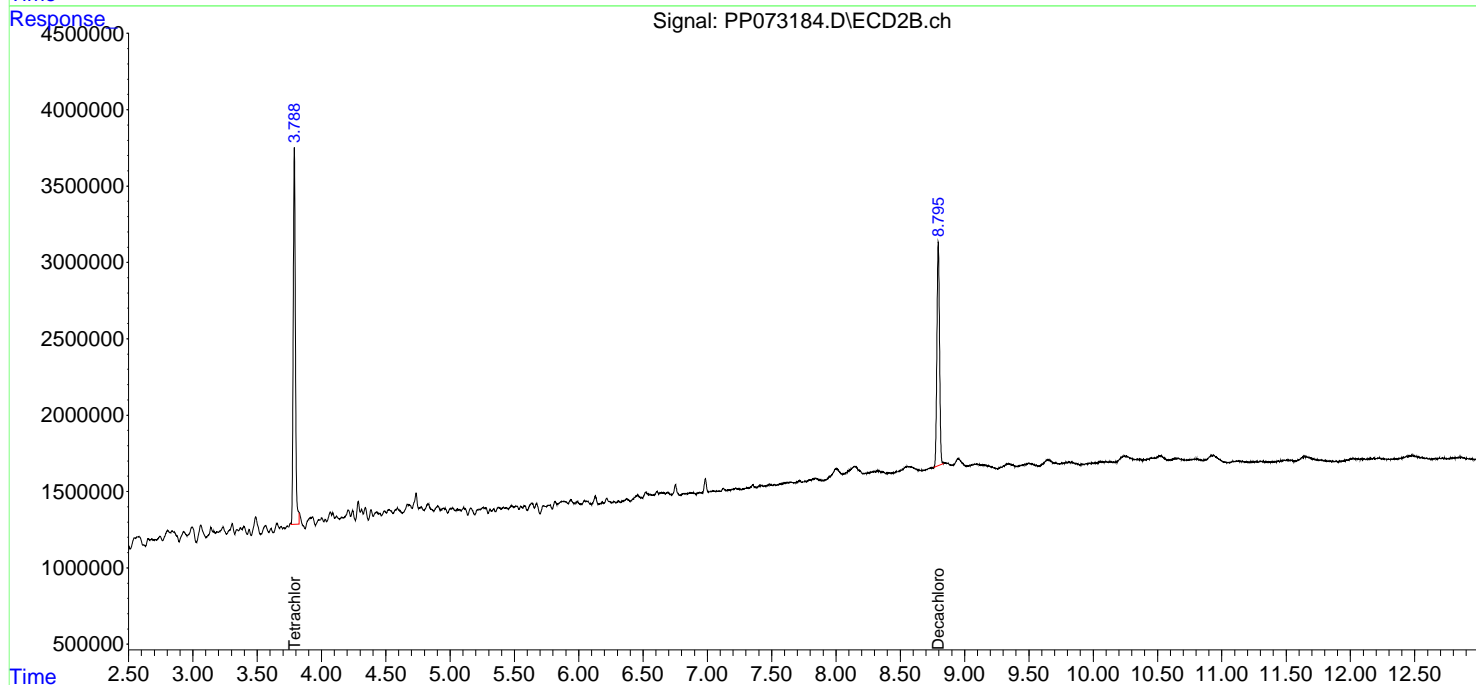
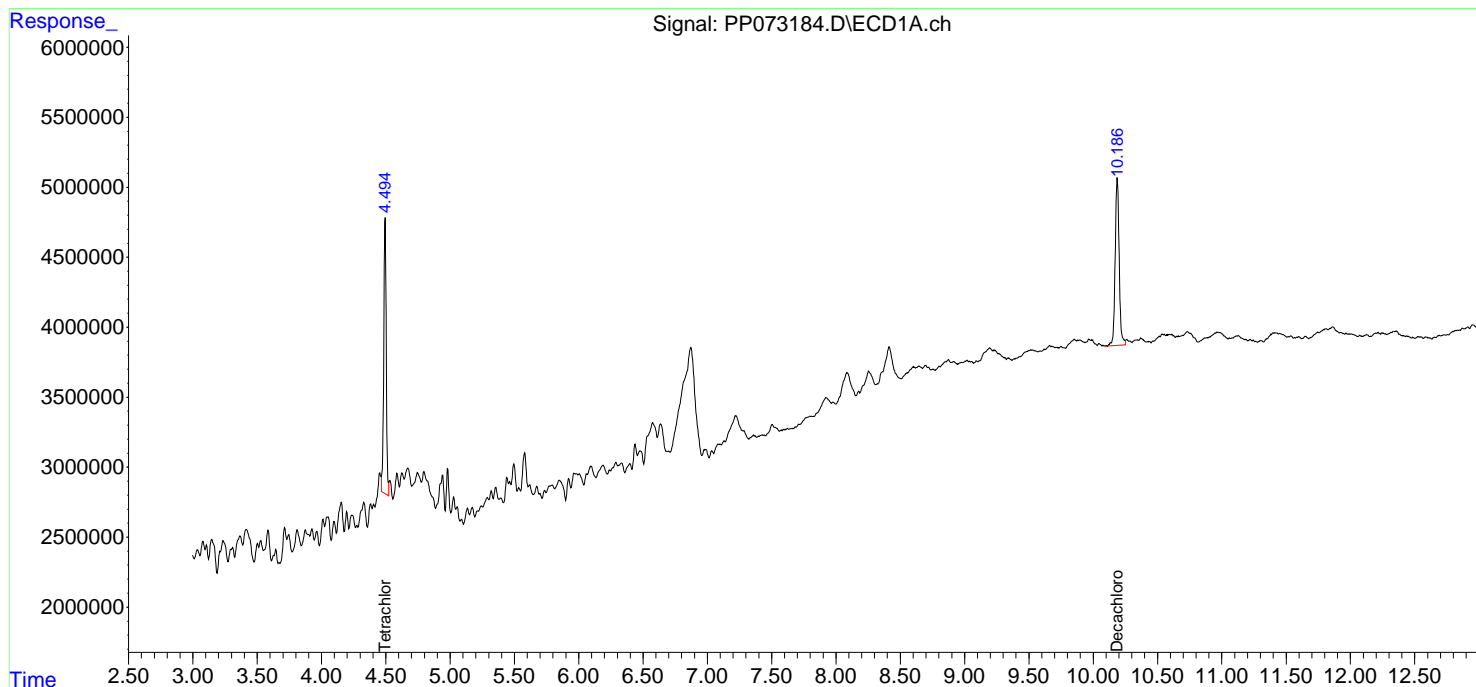
**Instrument :**  
 ECD\_P  
**ClientSampleID :**  
 TP-12

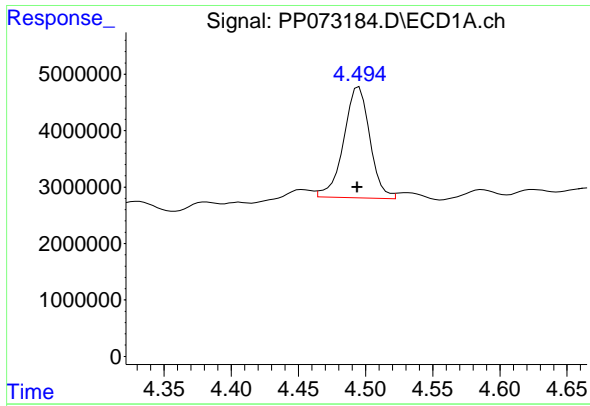
**Manual Integrations**  
**APPROVED**

Reviewed By :Yogesh Patel 06/24/2025  
 Supervised By :mohammad ahmed 06/25/2025

Integration File signal 1: autoint1.e  
 Integration File signal 2: autoint2.e  
 Quant Time: Jun 24 01:46:39 2025  
 Quant Method : Z:\pestpcbsrv\HPCHEM1\ECD\_P\methods\PP061725.M  
 Quant Title : GC EXTRACTABLES  
 QLast Update : Wed Jun 18 08:17:15 2025  
 Response via : Initial Calibration  
 Integrator: ChemStation

Volume Inj. : 2 µl  
 Signal #1 Phase : ZB-MR1 Signal #2 Phase: ZB-MR2  
 Signal #1 Info : 30Mx0.32mmx 0.50µm Signal #2 Info : 30M x 0.32mm x 0.25µm





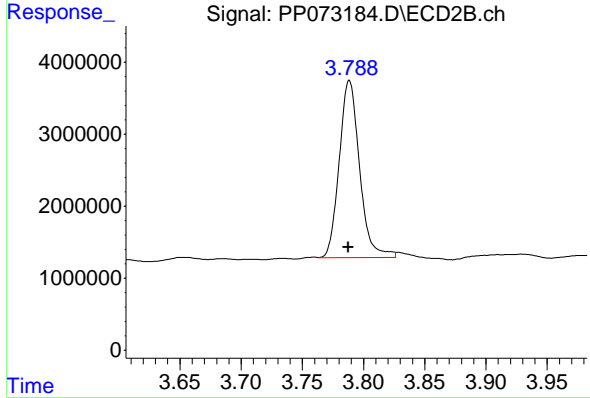
#1 Tetrachloro-m-xylene

R.T.: 4.495 min  
 Delta R.T.: 0.001 min  
 Response: 26817679  
 Conc: 12.70 ng/ml

Instrument : ECD\_P  
 Client Sample Id : TP-12

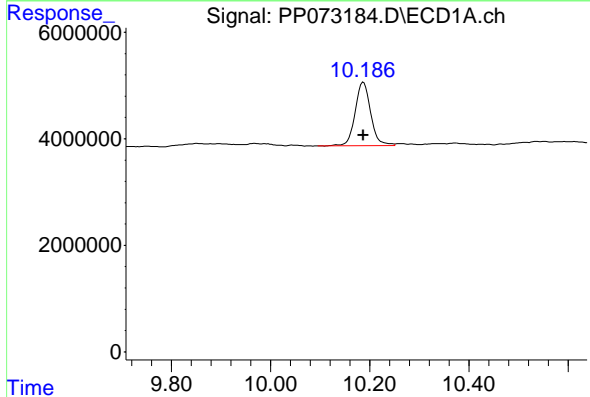
Manual Integrations  
 APPROVED

Reviewed By :Yogesh Patel 06/24/2025  
 Supervised By :mohammad ahmed 06/25/2025



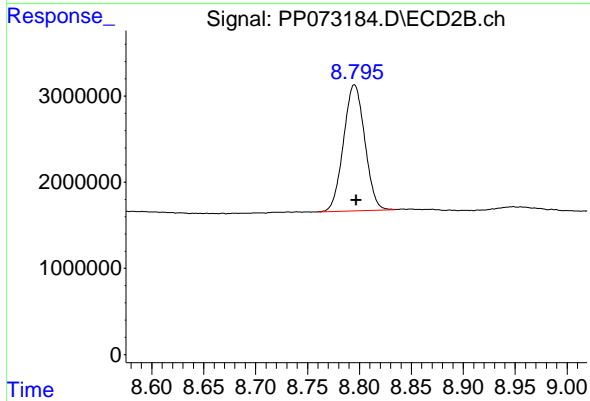
#1 Tetrachloro-m-xylene

R.T.: 3.788 min  
 Delta R.T.: 0.000 min  
 Response: 28496360  
 Conc: 15.82 ng/ml m



#2 Decachlorobiphenyl

R.T.: 10.187 min  
 Delta R.T.: 0.000 min  
 Response: 25961769  
 Conc: 15.19 ng/ml



#2 Decachlorobiphenyl

R.T.: 8.795 min  
 Delta R.T.: -0.002 min  
 Response: 20823902  
 Conc: 15.60 ng/ml