

Data Path : Z:\pestpcbsrv\HPCHEM1\ECD_P\Data\PP062325\
 Data File : PP073185.D
 Signal(s) : Signal #1: ECD1A.ch Signal #2: ECD2B.ch
 Acq On : 23 Jun 2025 18:57
 Operator : YP\AJ
 Sample : Q2389-01
 Misc :
 ALS Vial : 21 Sample Multiplier: 1

Instrument :
 ECD_P
ClientSampleId :
 MH-J-I

Manual Integrations
APPROVED
 Reviewed By :Yogesh Patel 06/24/2025
 Supervised By :mohammad ahmed 06/25/2025

Integration File signal 1: autoint1.e
 Integration File signal 2: autoint2.e
 Quant Time: Jun 24 01:46:51 2025
 Quant Method : Z:\pestpcbsrv\HPCHEM1\ECD_P\methods\PP061725.M
 Quant Title : GC EXTRACTABLES
 QLast Update : Wed Jun 18 08:17:15 2025
 Response via : Initial Calibration
 Integrator: ChemStation

Volume Inj. : 2 µl
 Signal #1 Phase : ZB-MR1 Signal #2 Phase: ZB-MR2
 Signal #1 Info : 30Mx0.32mmx 0.50µ Signal #2 Info : 30M x 0.32mm x 0.25µm

Compound	RT#1	RT#2	Resp#1	Resp#2	ng/ml	ng/ml

System Monitoring Compounds						
1) SA Tetrachlo...	4.493	3.790	39549158	38311716	18.737	21.263
2) SA Decachlor...	10.183	8.797	29208336	26304823	17.092m	19.708

Target Compounds

(f)=RT Delta > 1/2 Window (#)=Amounts differ by > 25% (m)=manual int.

Data Path : Z:\pestpcbsrv\HPCHEM1\ECD_P\Data\PP062325\
 Data File : PP073185.D
 Signal(s) : Signal #1: ECD1A.ch Signal #2: ECD2B.ch
 Acq On : 23 Jun 2025 18:57
 Operator : YP\AJ
 Sample : Q2389-01
 Misc :
 ALS Vial : 21 Sample Multiplier: 1

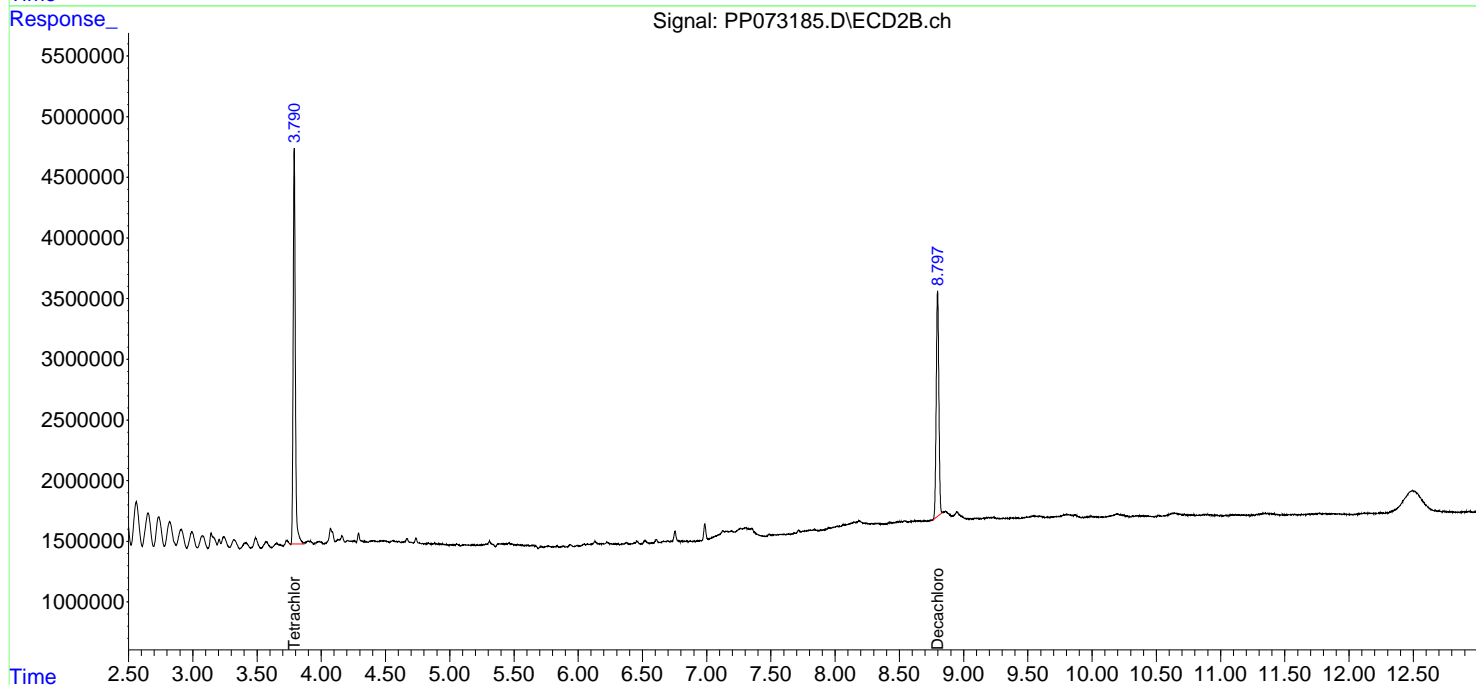
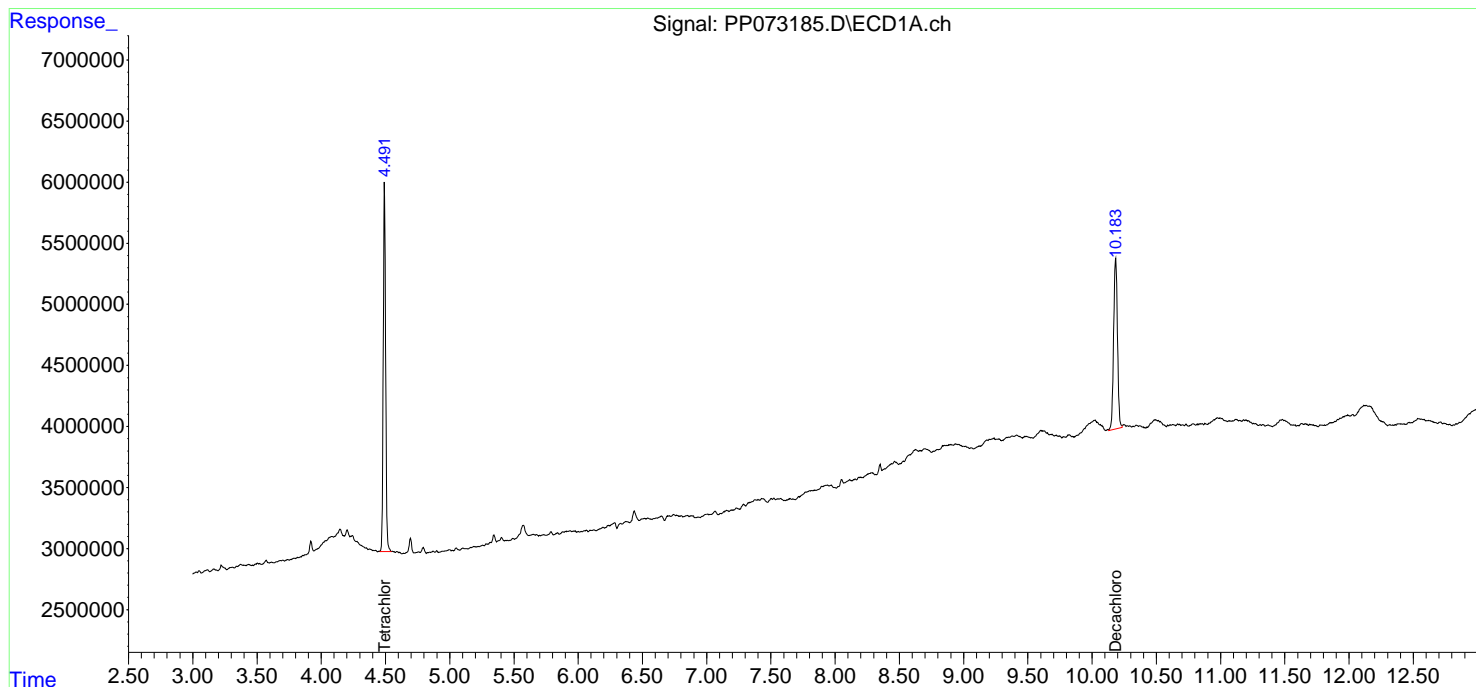
Instrument :
 ECD_P
 ClientSampleID :
 MH-J-I

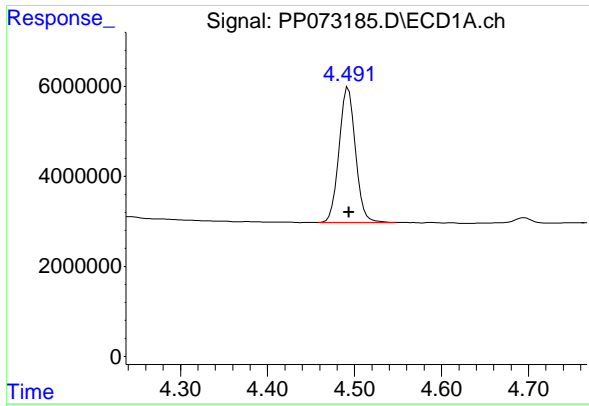
Manual Integrations
APPROVED

Reviewed By :Yogesh Patel 06/24/2025
 Supervised By :mohammad ahmed 06/25/2025

Integration File signal 1: autoint1.e
 Integration File signal 2: autoint2.e
 Quant Time: Jun 24 01:46:51 2025
 Quant Method : Z:\pestpcbsrv\HPCHEM1\ECD_P\methods\PP061725.M
 Quant Title : GC EXTRACTABLES
 QLast Update : Wed Jun 18 08:17:15 2025
 Response via : Initial Calibration
 Integrator: ChemStation

Volume Inj. : 2 µl
 Signal #1 Phase : ZB-MR1 Signal #2 Phase: ZB-MR2
 Signal #1 Info : 30Mx0.32mmx 0.50µm Signal #2 Info : 30M x 0.32mm x 0.25µm





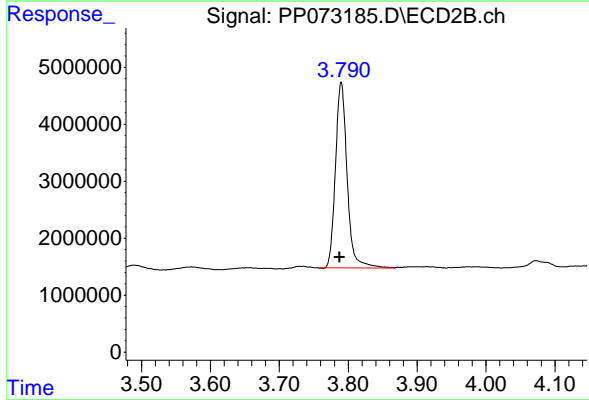
#1 Tetrachloro-m-xylene

R.T.: 4.493 min
 Delta R.T.: -0.001 min
 Response: 39549158
 Conc: 18.74 ng/ml

Instrument : ECD_P
 Client Sample Id : MH-J-I

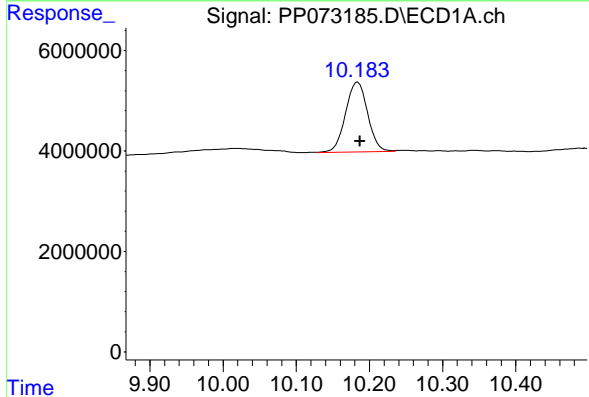
Manual Integrations
 APPROVED

Reviewed By :Yogesh Patel 06/24/2025
 Supervised By :mohammad ahmed 06/25/2025



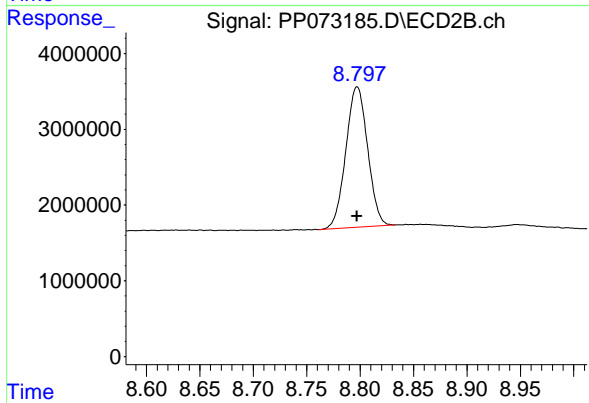
#1 Tetrachloro-m-xylene

R.T.: 3.790 min
 Delta R.T.: 0.002 min
 Response: 38311716
 Conc: 21.26 ng/ml



#2 Decachlorobiphenyl

R.T.: 10.183 min
 Delta R.T.: -0.004 min
 Response: 29208336
 Conc: 17.09 ng/ml m



#2 Decachlorobiphenyl

R.T.: 8.797 min
 Delta R.T.: 0.000 min
 Response: 26304823
 Conc: 19.71 ng/ml