

Data Path : Z:\pestpcbsrv\HPCHEM1\ECD_P\Data\PP062325\
 Data File : PP073190.D
 Signal(s) : Signal #1: ECD1A.ch Signal #2: ECD2B.ch
 Acq On : 23 Jun 2025 21:24
 Operator : YP\AJ
 Sample : AR1248CCC500
 Misc :
 ALS Vial : 5 Sample Multiplier: 1

Instrument :
 ECD_P
ClientSampleId :
 AR1248CCC500

Integration File signal 1: autoint1.e
 Integration File signal 2: autoint2.e
 Quant Time: Jun 24 01:47:54 2025
 Quant Method : Z:\pestpcbsrv\HPCHEM1\ECD_P\methods\PP061725.M
 Quant Title : GC EXTRACTABLES
 QLast Update : Wed Jun 18 08:17:15 2025
 Response via : Initial Calibration
 Integrator: ChemStation

Volume Inj. : 2 µl
 Signal #1 Phase : ZB-MR1 Signal #2 Phase: ZB-MR2
 Signal #1 Info : 30Mx0.32mmx 0.50µ Signal #2 Info : 30M x 0.32mm x 0.25µm

Compound	RT#1	RT#2	Resp#1	Resp#2	ng/ml	ng/ml

System Monitoring Compounds						
1) SA Tetrachlo...	4.494	3.788	98110343	88347606	46.480	49.033
2) SA Decachlor...	10.185	8.795	78230112	61426634	45.778	46.022
Target Compounds						
21) L5 AR-1248-1	5.644	4.868	22590161	21687803	474.898	497.536
22) L5 AR-1248-2	5.915	5.104	29473016	29521320	503.374	503.815
23) L5 AR-1248-3	6.117	5.146	33873873	30864972	519.145	509.793
24) L5 AR-1248-4	6.516	5.317	41042944	37085659	482.492	529.625
25) L5 AR-1248-5	6.555	5.708	40232829	36467597	480.718	513.398

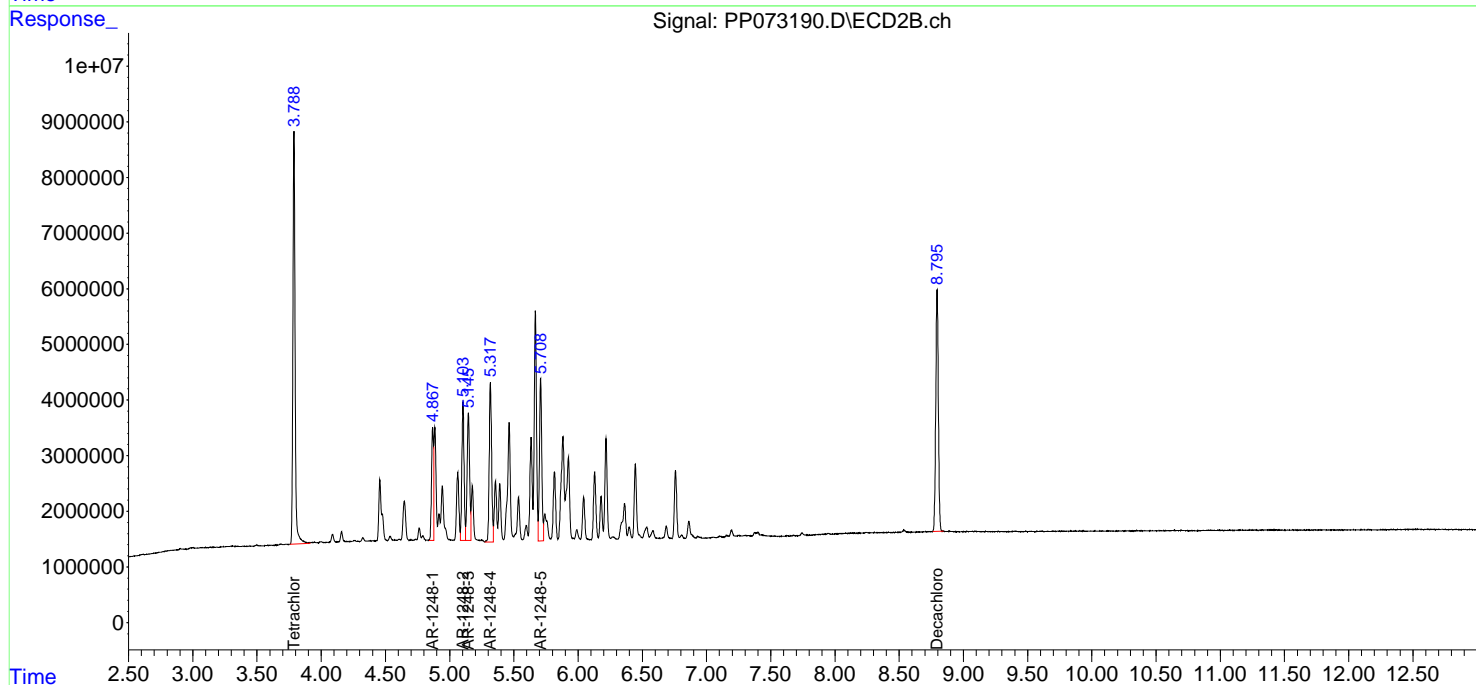
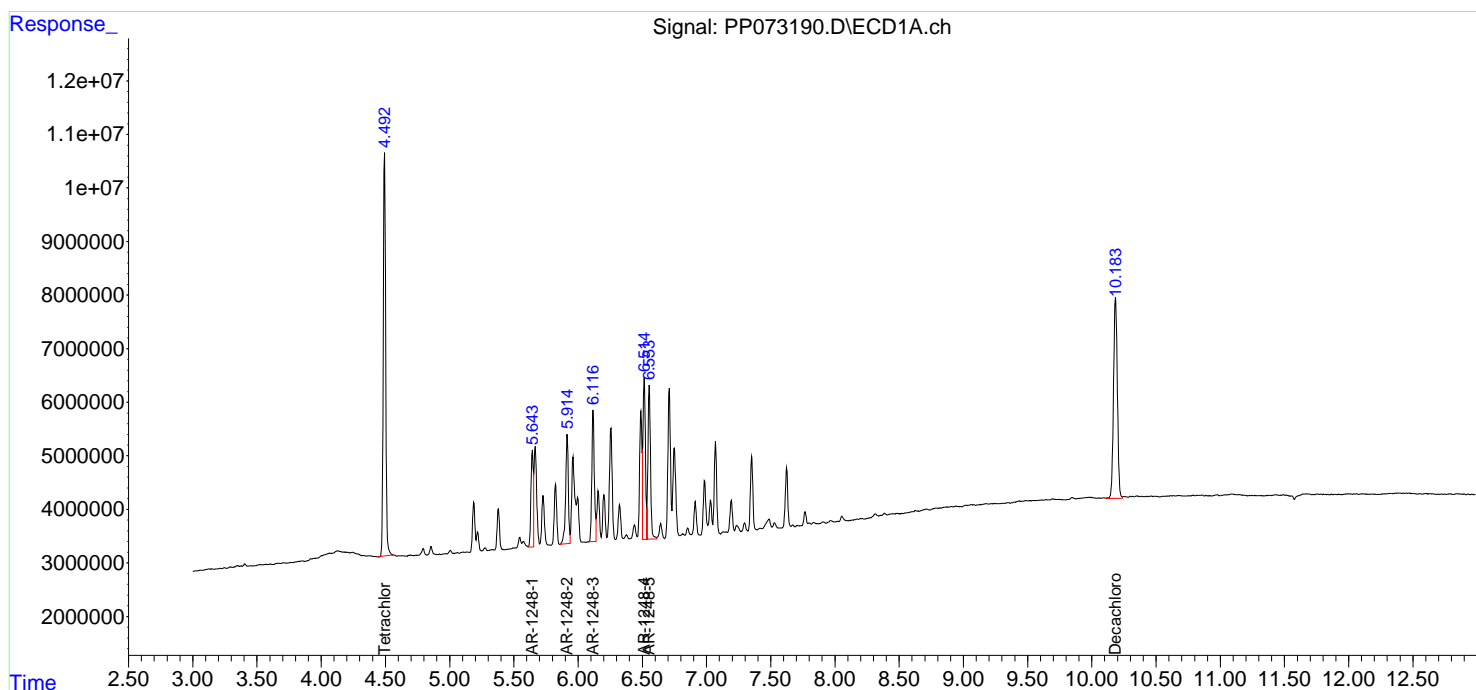
(f)=RT Delta > 1/2 Window (#)=Amounts differ by > 25% (m)=manual int.

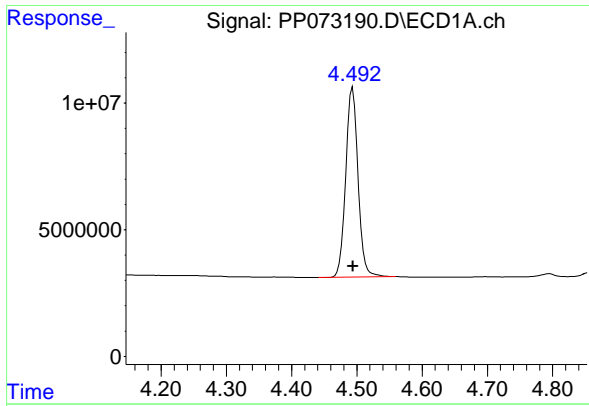
Data Path : Z:\pestpcbsrv\HPCHEM1\ECD_P\Data\PP062325\
 Data File : PP073190.D
 Signal(s) : Signal #1: ECD1A.ch Signal #2: ECD2B.ch
 Acq On : 23 Jun 2025 21:24
 Operator : YP\AJ
 Sample : AR1248CCC500
 Misc :
 ALS Vial : 5 Sample Multiplier: 1

Instrument :
 ECD_P
 ClientSampleId :
 AR1248CCC500

Integration File signal 1: autoint1.e
 Integration File signal 2: autoint2.e
 Quant Time: Jun 24 01:47:54 2025
 Quant Method : Z:\pestpcbsrv\HPCHEM1\ECD_P\methods\PP061725.M
 Quant Title : GC EXTRACTABLES
 QLast Update : Wed Jun 18 08:17:15 2025
 Response via : Initial Calibration
 Integrator: ChemStation

Volume Inj. : 2 µl
 Signal #1 Phase : ZB-MR1 Signal #2 Phase: ZB-MR2
 Signal #1 Info : 30Mx0.32mmx 0.50µ Signal #2 Info : 30M x 0.32mm x 0.25µm

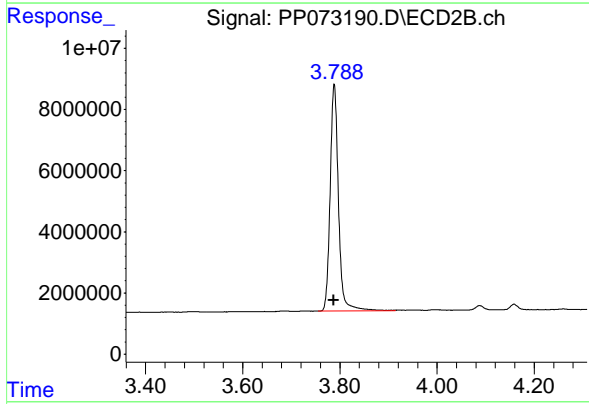




#1 Tetrachloro-m-xylene

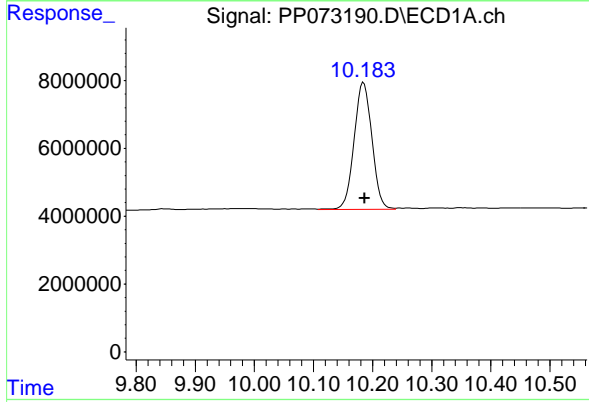
R.T.: 4.494 min
 Delta R.T.: 0.000 min
 Response: 98110343
 Conc: 46.48 ng/ml

Instrument :
 ECD_P
 ClientSampleId :
 AR1248CCC500



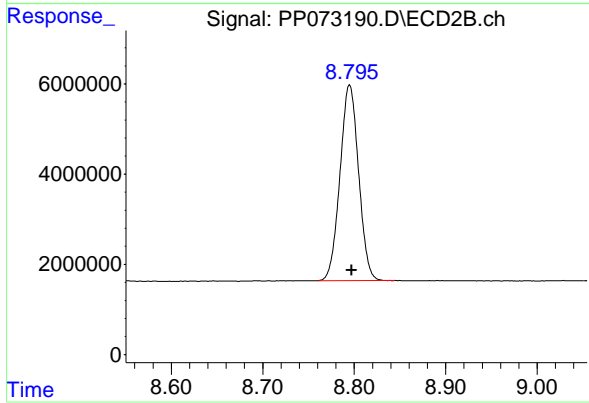
#1 Tetrachloro-m-xylene

R.T.: 3.788 min
 Delta R.T.: 0.000 min
 Response: 88347606
 Conc: 49.03 ng/ml



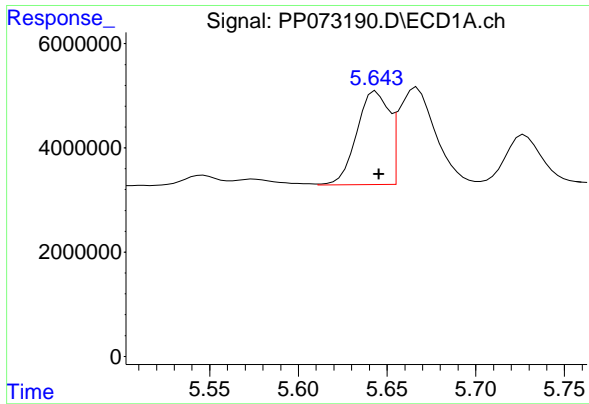
#2 Decachlorobiphenyl

R.T.: 10.185 min
 Delta R.T.: -0.002 min
 Response: 78230112
 Conc: 45.78 ng/ml



#2 Decachlorobiphenyl

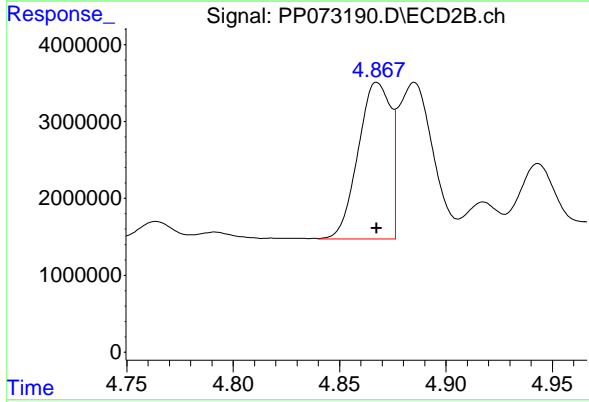
R.T.: 8.795 min
 Delta R.T.: -0.002 min
 Response: 61426634
 Conc: 46.02 ng/ml



#21 AR-1248-1

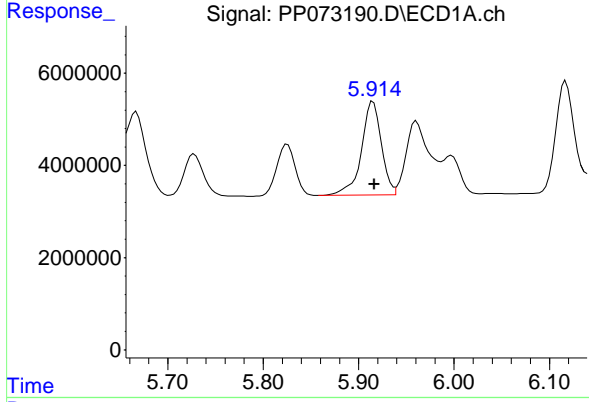
R.T.: 5.644 min
 Delta R.T.: -0.001 min
 Response: 22590161
 Conc: 474.90 ng/ml

Instrument :
 ECD_P
 ClientSampleId :
 AR1248CCC500



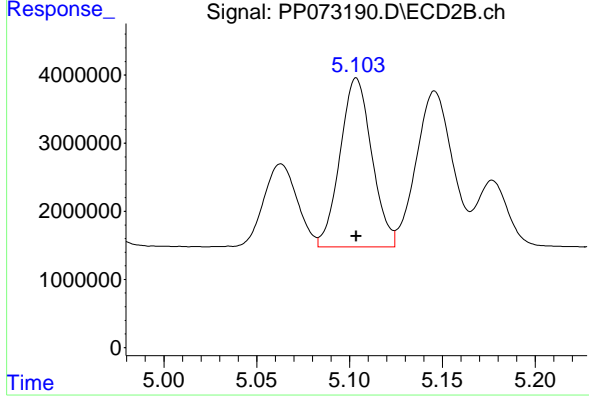
#21 AR-1248-1

R.T.: 4.868 min
 Delta R.T.: 0.000 min
 Response: 21687803
 Conc: 497.54 ng/ml



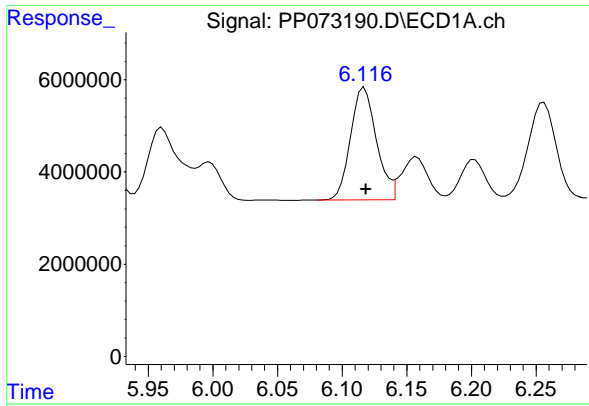
#22 AR-1248-2

R.T.: 5.915 min
 Delta R.T.: -0.001 min
 Response: 29473016
 Conc: 503.37 ng/ml



#22 AR-1248-2

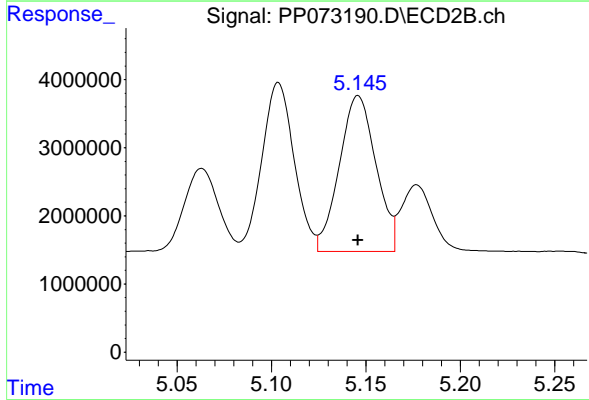
R.T.: 5.104 min
 Delta R.T.: 0.000 min
 Response: 29521320
 Conc: 503.81 ng/ml



#23 AR-1248-3

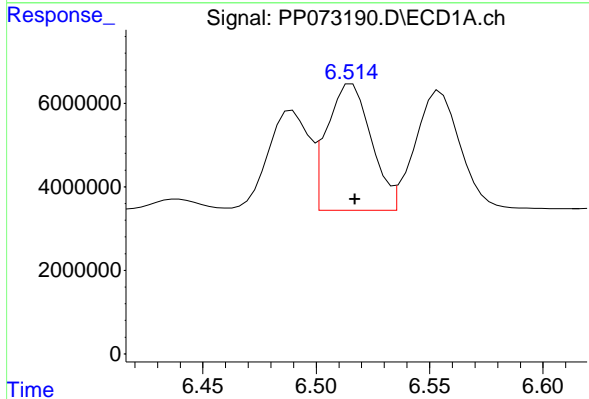
R.T.: 6.117 min
 Delta R.T.: -0.001 min
 Response: 33873873
 Conc: 519.15 ng/ml

Instrument :
 ECD_P
 ClientSampleId :
 AR1248CCC500



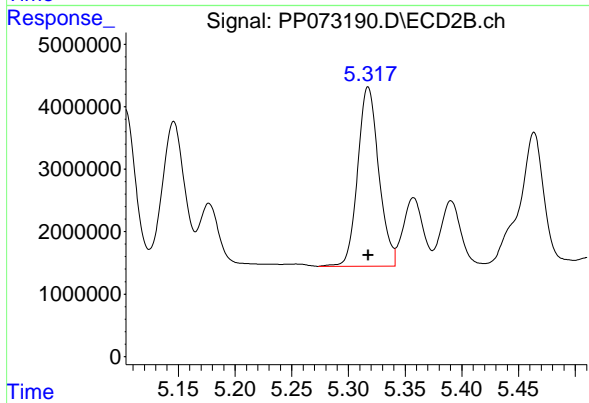
#23 AR-1248-3

R.T.: 5.146 min
 Delta R.T.: 0.000 min
 Response: 30864972
 Conc: 509.79 ng/ml



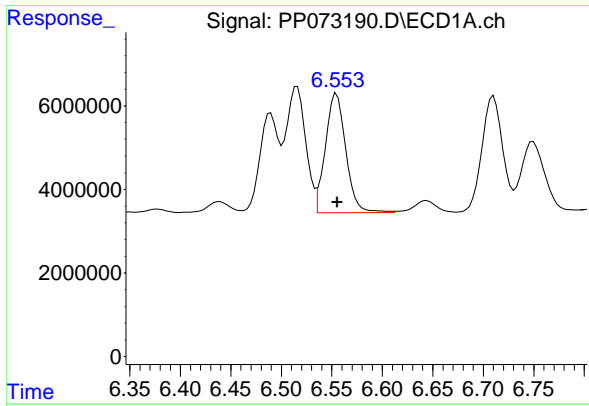
#24 AR-1248-4

R.T.: 6.516 min
 Delta R.T.: -0.001 min
 Response: 41042944
 Conc: 482.49 ng/ml



#24 AR-1248-4

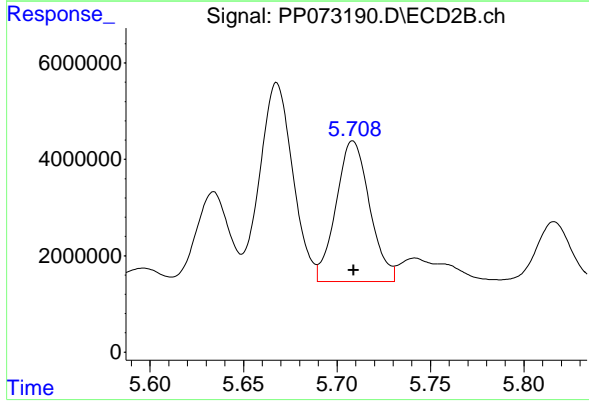
R.T.: 5.317 min
 Delta R.T.: 0.000 min
 Response: 37085659
 Conc: 529.63 ng/ml



#25 AR-1248-5

R.T.: 6.555 min
 Delta R.T.: 0.000 min
 Response: 40232829
 Conc: 480.72 ng/ml

Instrument :
 ECD_P
 ClientSampleId :
 AR1248CCC500



#25 AR-1248-5

R.T.: 5.708 min
 Delta R.T.: 0.000 min
 Response: 36467597
 Conc: 513.40 ng/ml