

Data Path : Z:\pestpcbsrv\HPCHEM1\ECD_P\Data\PP062325\
 Data File : PP073191.D
 Signal(s) : Signal #1: ECD1A.ch Signal #2: ECD2B.ch
 Acq On : 23 Jun 2025 21:40
 Operator : YP\AJ
 Sample : AR1254CCC500
 Misc :
 ALS Vial : 6 Sample Multiplier: 1

Instrument :
 ECD_P
ClientSampleId :
 AR1254CCC500

Manual Integrations
APPROVED
 Reviewed By :Yogesh Patel 06/24/2025
 Supervised By :mohammad ahmed 06/25/2025

Integration File signal 1: autoint1.e
 Integration File signal 2: autoint2.e
 Quant Time: Jun 24 01:48:07 2025
 Quant Method : Z:\pestpcbsrv\HPCHEM1\ECD_P\methods\PP061725.M
 Quant Title : GC EXTRACTABLES
 QLast Update : Wed Jun 18 08:17:15 2025
 Response via : Initial Calibration
 Integrator: ChemStation

Volume Inj. : 2 µl
 Signal #1 Phase : ZB-MR1 Signal #2 Phase: ZB-MR2
 Signal #1 Info : 30Mx0.32mmx 0.50µ Signal #2 Info : 30M x 0.32mm x 0.25µm

Compound	RT#1	RT#2	Resp#1	Resp#2	ng/ml	ng/ml

System Monitoring Compounds						
1) SA Tetrachlo...	4.495	3.789	100.9E6	90332702	47.822	50.135
2) SA Decachlor...	10.184	8.796	80909725	63803904	47.346m	47.803
Target Compounds						
26) L6 AR-1254-1	6.494	5.669	41031519	54728918	487.461	499.124
27) L6 AR-1254-2	6.710	5.817	60980184	46679707	486.282	493.723
28) L6 AR-1254-3	7.073	6.219	65813523	71987732	501.586	487.896
29) L6 AR-1254-4	7.354	6.448	57456676	56837443	479.669	585.343
30) L6 AR-1254-5	7.770	6.864	55672319	61097376	487.258	470.115

(f)=RT Delta > 1/2 Window (#)=Amounts differ by > 25% (m)=manual int.

Data Path : Z:\pestpcbsrv\HPCHEM1\ECD_P\Data\PP062325\
 Data File : PP073191.D
 Signal(s) : Signal #1: ECD1A.ch Signal #2: ECD2B.ch
 Acq On : 23 Jun 2025 21:40
 Operator : YP\AJ
 Sample : AR1254CCC500
 Misc :
 ALS Vial : 6 Sample Multiplier: 1

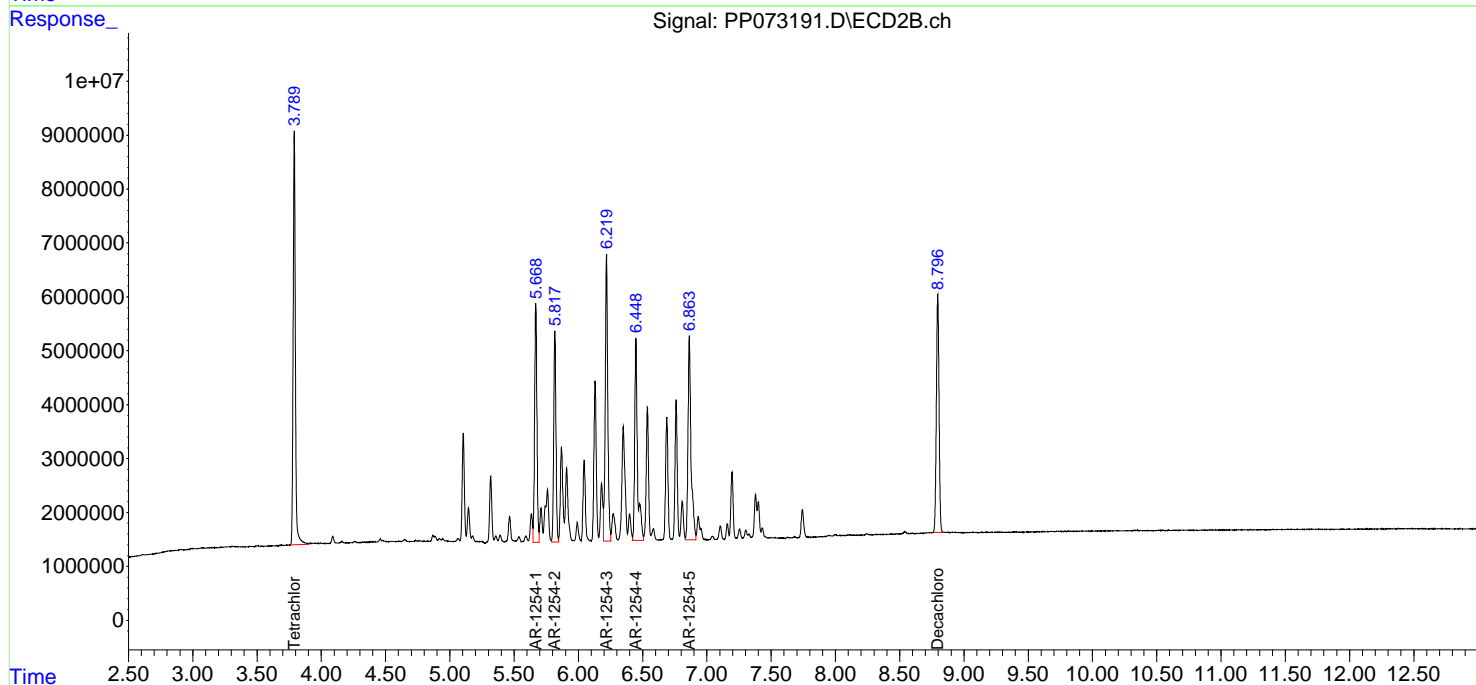
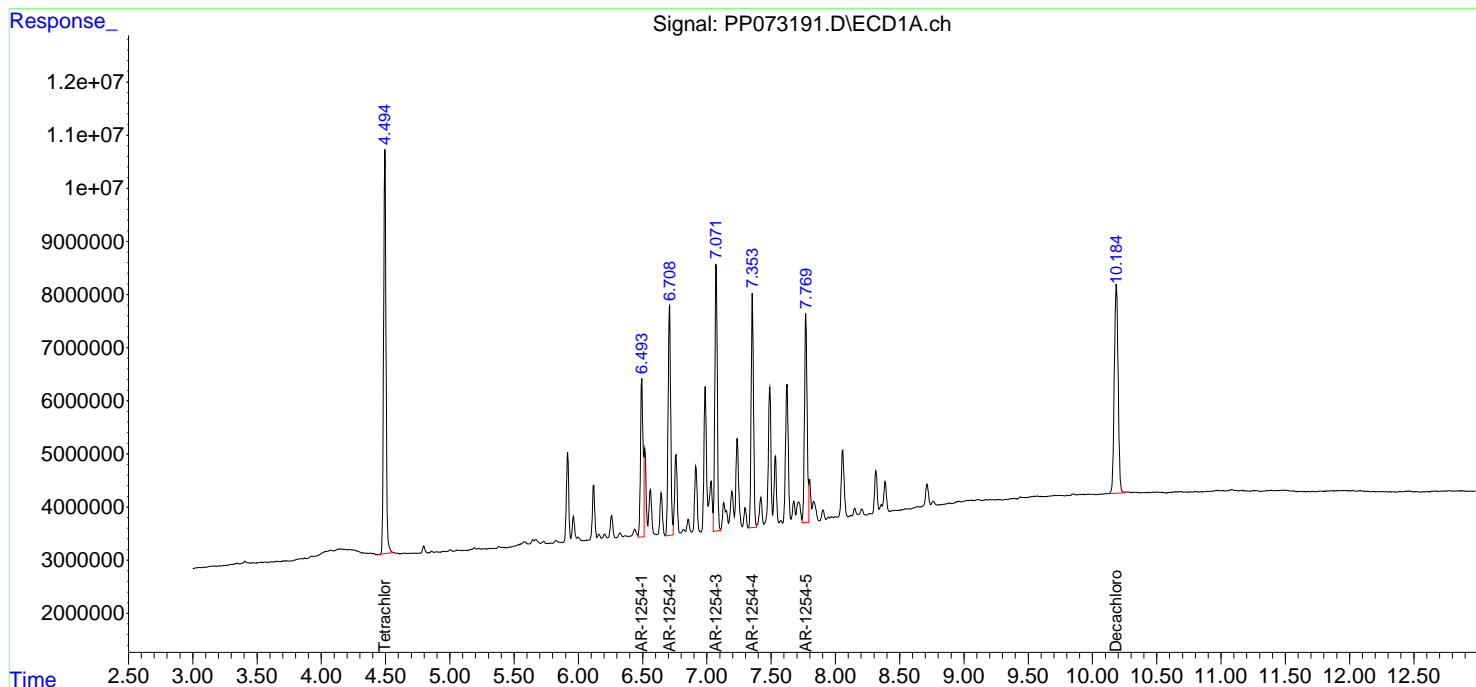
Instrument :
 ECD_P
ClientSampleId :
 AR1254CCC500

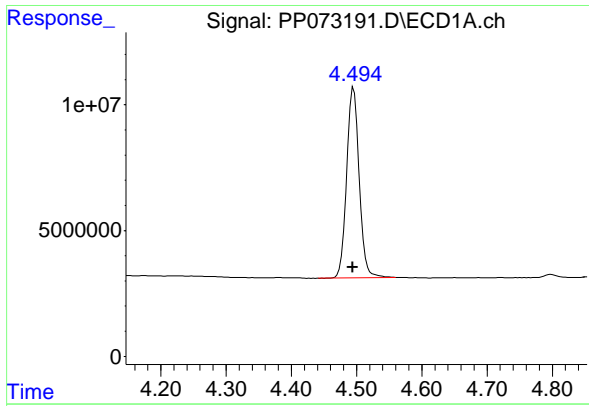
Manual Integrations
APPROVED

Reviewed By :Yogesh Patel 06/24/2025
 Supervised By :mohammad ahmed 06/25/2025

Integration File signal 1: autoint1.e
 Integration File signal 2: autoint2.e
 Quant Time: Jun 24 01:48:07 2025
 Quant Method : Z:\pestpcbsrv\HPCHEM1\ECD_P\methods\PP061725.M
 Quant Title : GC EXTRACTABLES
 QLast Update : Wed Jun 18 08:17:15 2025
 Response via : Initial Calibration
 Integrator: ChemStation

Volume Inj. : 2 µl
 Signal #1 Phase : ZB-MR1 Signal #2 Phase: ZB-MR2
 Signal #1 Info : 30Mx0.32mmx 0.50µm Signal #2 Info : 30M x 0.32mm x 0.25µm





#1 Tetrachloro-m-xylene

R.T.: 4.495 min
 Delta R.T.: 0.001 min
 Response: 100943866
 Conc: 47.82 ng/ml

Instrument :

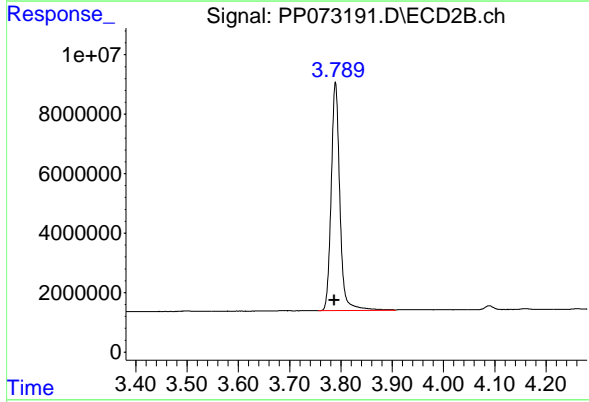
ECD_P

ClientSampleId :

AR1254CCC500

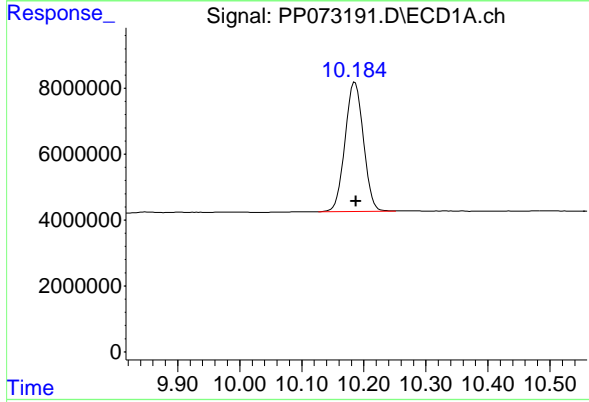
Manual Integrations
 APPROVED

Reviewed By :Yogesh Patel 06/24/2025
 Supervised By :mohammad ahmed 06/25/2025



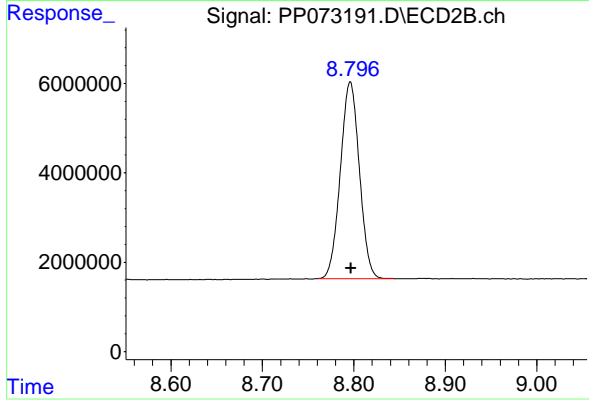
#1 Tetrachloro-m-xylene

R.T.: 3.789 min
 Delta R.T.: 0.002 min
 Response: 90332702
 Conc: 50.13 ng/ml



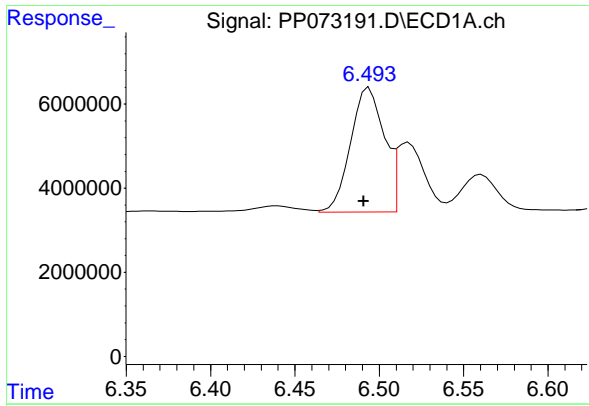
#2 Decachlorobiphenyl

R.T.: 10.184 min
 Delta R.T.: -0.003 min
 Response: 80909725
 Conc: 47.35 ng/ml m



#2 Decachlorobiphenyl

R.T.: 8.796 min
 Delta R.T.: 0.000 min
 Response: 63803904
 Conc: 47.80 ng/ml



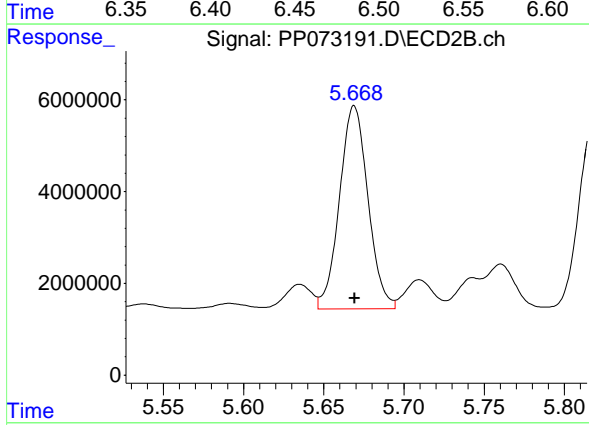
#26 AR-1254-1

R.T.: 6.494 min
 Delta R.T.: 0.003 min
 Response: 41031519
 Conc: 487.46 ng/ml

Instrument : ECD_P
 Client Sample Id : AR1254CCC500

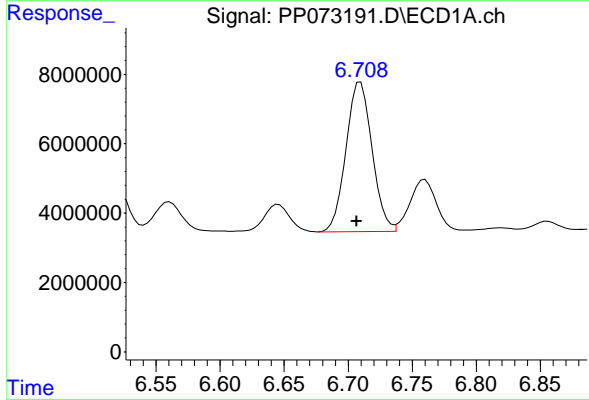
Manual Integrations
 APPROVED

Reviewed By :Yogesh Patel 06/24/2025
 Supervised By :mohammad ahmed 06/25/2025



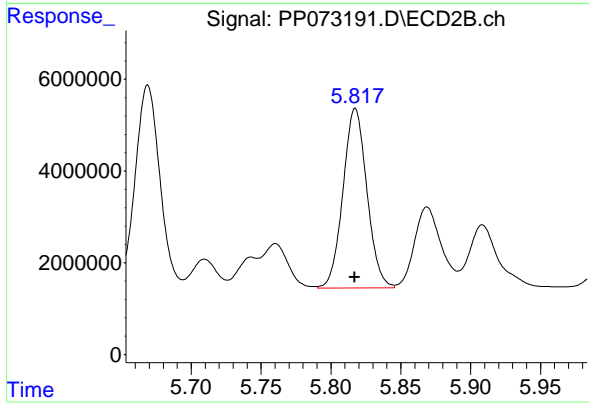
#26 AR-1254-1

R.T.: 5.669 min
 Delta R.T.: 0.000 min
 Response: 54728918
 Conc: 499.12 ng/ml



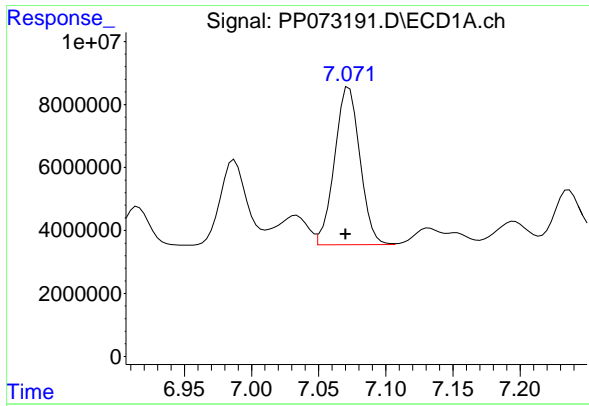
#27 AR-1254-2

R.T.: 6.710 min
 Delta R.T.: 0.003 min
 Response: 60980184
 Conc: 486.28 ng/ml



#27 AR-1254-2

R.T.: 5.817 min
 Delta R.T.: 0.000 min
 Response: 46679707
 Conc: 493.72 ng/ml



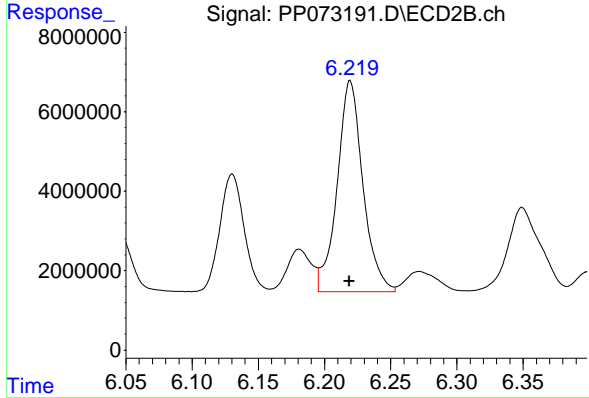
#28 AR-1254-3

R.T.: 7.073 min
 Delta R.T.: 0.002 min
 Response: 65813523
 Conc: 501.59 ng/ml

Instrument : ECD_P
 ClientSampleId : AR1254CCC500

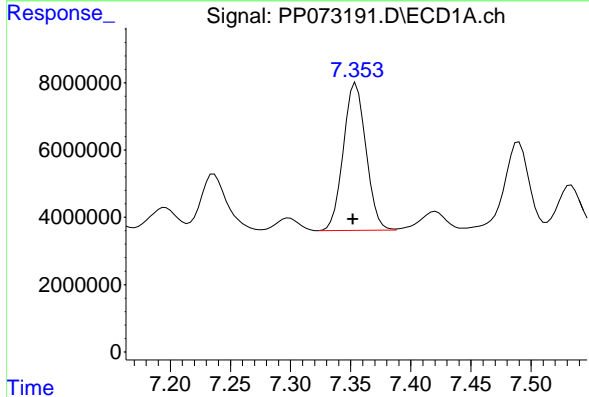
Manual Integrations
 APPROVED

Reviewed By :Yogesh Patel 06/24/2025
 Supervised By :mohammad ahmed 06/25/2025



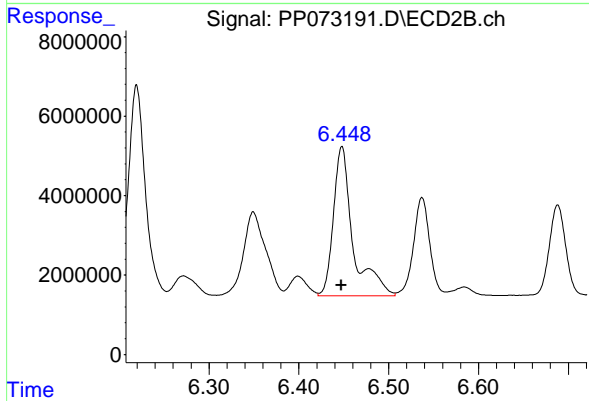
#28 AR-1254-3

R.T.: 6.219 min
 Delta R.T.: 0.000 min
 Response: 71987732
 Conc: 487.90 ng/ml



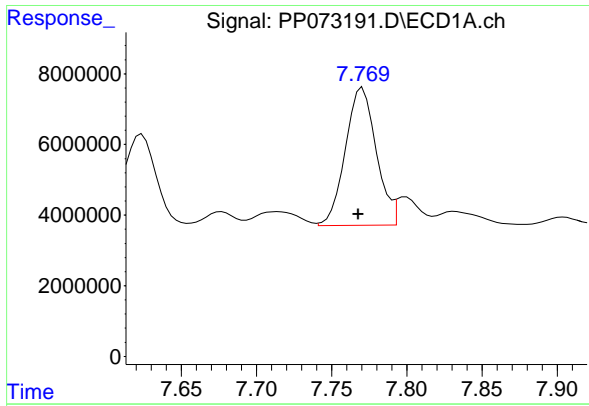
#29 AR-1254-4

R.T.: 7.354 min
 Delta R.T.: 0.002 min
 Response: 57456676
 Conc: 479.67 ng/ml



#29 AR-1254-4

R.T.: 6.448 min
 Delta R.T.: 0.000 min
 Response: 56837443
 Conc: 585.34 ng/ml



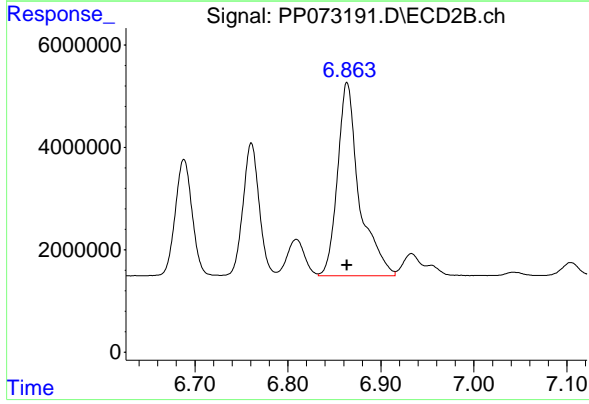
#30 AR-1254-5

R.T.: 7.770 min
 Delta R.T.: 0.003 min
 Response: 55672319
 Conc: 487.26 ng/ml

Instrument :
 ECD_P
 ClientSampleId :
 AR1254CCC500

Manual Integrations
 APPROVED

Reviewed By :Yogesh Patel 06/24/2025
 Supervised By :mohammad ahmed 06/25/2025



#30 AR-1254-5

R.T.: 6.864 min
 Delta R.T.: 0.000 min
 Response: 61097376
 Conc: 470.11 ng/ml