

Data Path : Z:\pestpcbsrv\HPCHEM1\ECD_P\Data\PP062521\
 Data File : PP036804.D
 Signal(s) : Signal #1: ECD1A.CH Signal #2: ECD2B.CH
 Acq On : 25 Jun 2021 17:29
 Operator : DD\AJ
 Sample : AR1660CCC500
 Misc :
 ALS Vial : 3 Sample Multiplier: 1

Instrument :
 ECD_P
 ClientSampleId :
 AR1660CCC500

Integration File signal 1: autoint1.e
 Integration File signal 2: autoint2.e
 Quant Time: Jun 28 04:20:27 2021
 Quant Method : Z:\pestpcbsrv\HPCHEM1\ECD_P\methods\PP061721.M
 Quant Title : GC EXTRACTABLES
 QLast Update : Fri Jun 18 06:06:19 2021
 Response via : Initial Calibration
 Integrator: ChemStation 6890 Scale Mode: Small noise peaks clipped

Volume Inj. : 2 µl
 Signal #1 Phase : ZB-MR1 Signal #2 Phase: ZB-MR2
 Signal #1 Info : 30Mx0.32mmx 0.50µ Signal #2 Info : 30M x 0.32mm x 0.25µm

Compound	RT#1	RT#2	Resp#1	Resp#2	ng/ml	ng/ml

System Monitoring Compounds						
1) SA Tetrachlo...	4.961	3.954	2160758	1456980	48.887	47.040
2) SA Decachlor...	10.988	9.250	2173253	1391119	50.662	43.499
Target Compounds						
3) L1 AR-1016-1	6.280	5.205	819409	552457	483.756	468.637
4) L1 AR-1016-2	6.305	5.226	1171944	754719	486.033	464.689
5) L1 AR-1016-3	6.371	5.416	737752	417810	479.915	463.093
6) L1 AR-1016-4	6.477	5.469	619514	323538	481.907	455.762
7) L1 AR-1016-5	6.792	5.696	596847	410417	466.631	452.886
8) L2 AR-1221-1	5.207	4.209	80240	53360	142.924	137.119
9) L2 AR-1221-2	5.310	4.308	118117	78523	274.097	263.073
10) L2 AR-1221-3	5.396	4.396	447035	295551	346.748	327.288
11) L3 AR-1232-1	5.396	4.396	447035	295551	419.721	401.747
12) L3 AR-1232-2	5.986	5.226	602436	754719	1095.386	1128.685
13) L3 AR-1232-3	6.305	5.416	1171944	417810	1147.212	1151.705
14) L3 AR-1232-4	6.477	5.513	619514	389655	1147.713	1244.336
15) L3 AR-1232-5	6.575	5.696	484188	410417	1321.105	1152.231
16) L4 AR-1242-1	6.280	5.205	819409	552457	638.994	620.674
17) L4 AR-1242-2	6.305	5.226	1171944	754719	642.224	618.719
18) L4 AR-1242-3	6.371	5.416	737752	417810	628.859	620.927
19) L4 AR-1242-4	6.477	5.513	619514	389655	640.148	601.850
20) L4 AR-1242-5	7.260	6.076	97969	302413	93.137	370.648 #
21) L5 AR-1248-1	6.280	5.205	819409	552457	812.242	792.885
22) L5 AR-1248-2	6.575	5.469	484188	323538	356.529	341.580
23) L5 AR-1248-3	6.792	5.513	596847	389655	366.822	393.814
24) L5 AR-1248-4	7.220	5.696	118729	410417	65.030	350.866 #
25) L5 AR-1248-5	7.260	6.119	97969	55423	54.335	46.724
26) L6 AR-1254-1	7.189	6.076	424341	302413	241.286	178.482 #
27) L6 AR-1254-2	7.418	6.236	446399	266619	164.984	179.251
28) L6 AR-1254-3	7.800	6.657	276766	151463	93.438	62.301 #
29) L6 AR-1254-4	8.095	6.896	196706	81330	89.479	52.556 #
30) L6 AR-1254-5	8.523	7.325	1407208	936993	591.726	435.753 #
31) L7 AR-1260-1	7.967	6.794	973670	687364	448.591	426.924
32) L7 AR-1260-2	8.232	6.992	1179649	838266	460.271	432.260
33) L7 AR-1260-3	8.597	7.146	926859	777426	462.393	427.464
34) L7 AR-1260-4	8.828	7.629	1088289	661076	459.341	426.295
35) L7 AR-1260-5	9.156	7.878	2104600	1602567	471.681	436.102
36) L8 AR-1262-1	8.597	7.325	926859	936993	325.277	786.143 #
37) L8 AR-1262-2	9.156	7.878	2104600	1602567	414.224	408.814
38) L8 AR-1262-3	9.470	8.165	495626	391944	133.788	246.281 #
39) L8 AR-1262-4	9.562	8.227	369771	1201046	128.743	403.528 #
40) L8 AR-1262-5	10.233	8.726	751638	471711	355.765	331.015
41) L9 AR-1268-1	9.470	8.165	495626	391944	82.611	84.170
42) L9 AR-1268-2	9.562	8.227	369771	1201046	64.868	278.434 #

Data Path : Z:\pestpcbsrv\HPCHEM1\ECD_P\Data\PP062521\
 Data File : PP036804.D
 Signal(s) : Signal #1: ECD1A.CH Signal #2: ECD2B.CH
 Acq On : 25 Jun 2021 17:29
 Operator : DD\AJ
 Sample : AR1660CCC500
 Misc :
 ALS Vial : 3 Sample Multiplier: 1

Instrument :
 ECD_P
 ClientSampleId :
 AR1660CCC500

Integration File signal 1: autoint1.e
 Integration File signal 2: autoint2.e
 Quant Time: Jun 28 04:20:27 2021
 Quant Method : Z:\pestpcbsrv\HPCHEM1\ECD_P\methods\PP061721.M
 Quant Title : GC EXTRACTABLES
 QLast Update : Fri Jun 18 06:06:19 2021
 Response via : Initial Calibration
 Integrator: ChemStation 6890 Scale Mode: Small noise peaks clipped

Volume Inj. : 2 µl
 Signal #1 Phase : ZB-MR1 Signal #2 Phase: ZB-MR2
 Signal #1 Info : 30Mx0.32mmx 0.50µ Signal #2 Info : 30M x 0.32mm x 0.25µm

	Compound	RT#1	RT#2	Resp#1	Resp#2	ng/ml	ng/ml
43)	L9 AR-1268-3	9.792	8.438	35034	19479	7.287	5.335 #
44)	L9 AR-1268-4	10.233	8.726	751638	471711	319.100	296.539
45)	L9 AR-1268-5	10.649	9.006	224066	138656	14.570	11.728

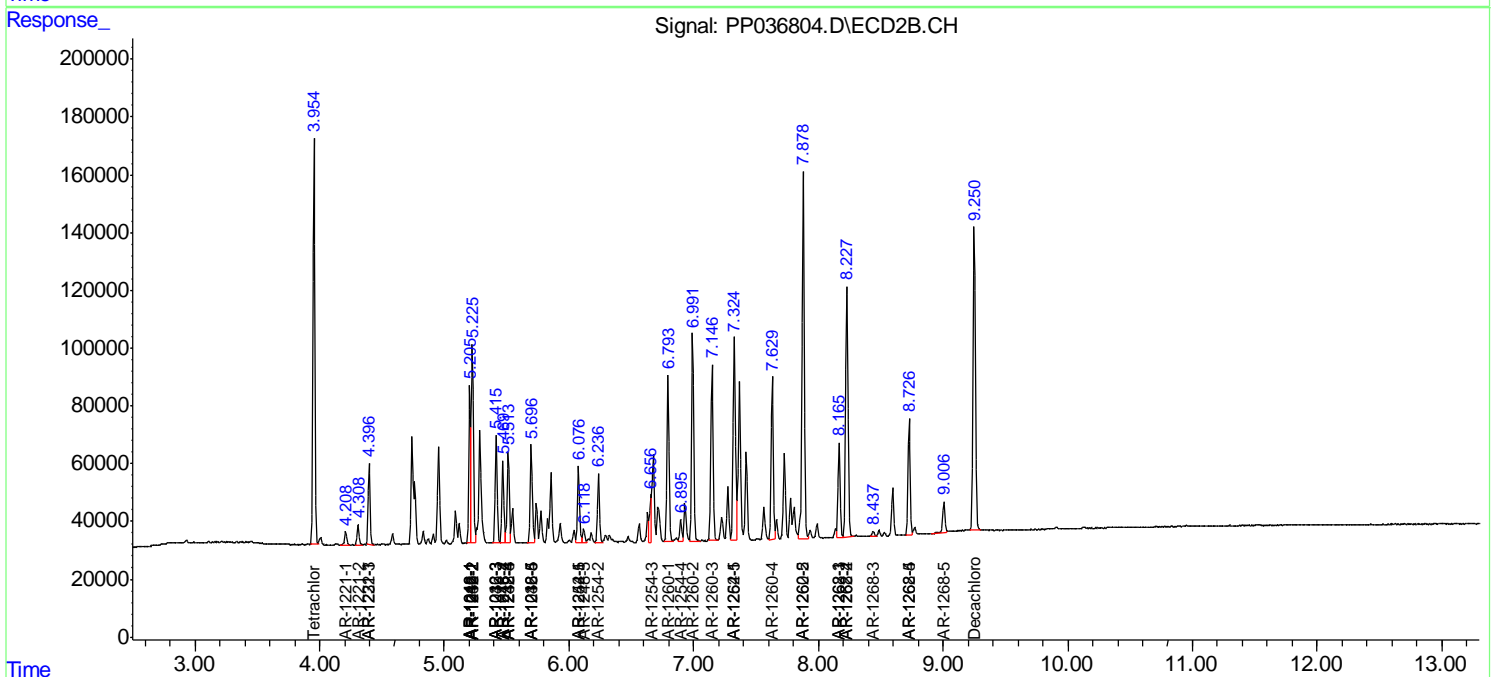
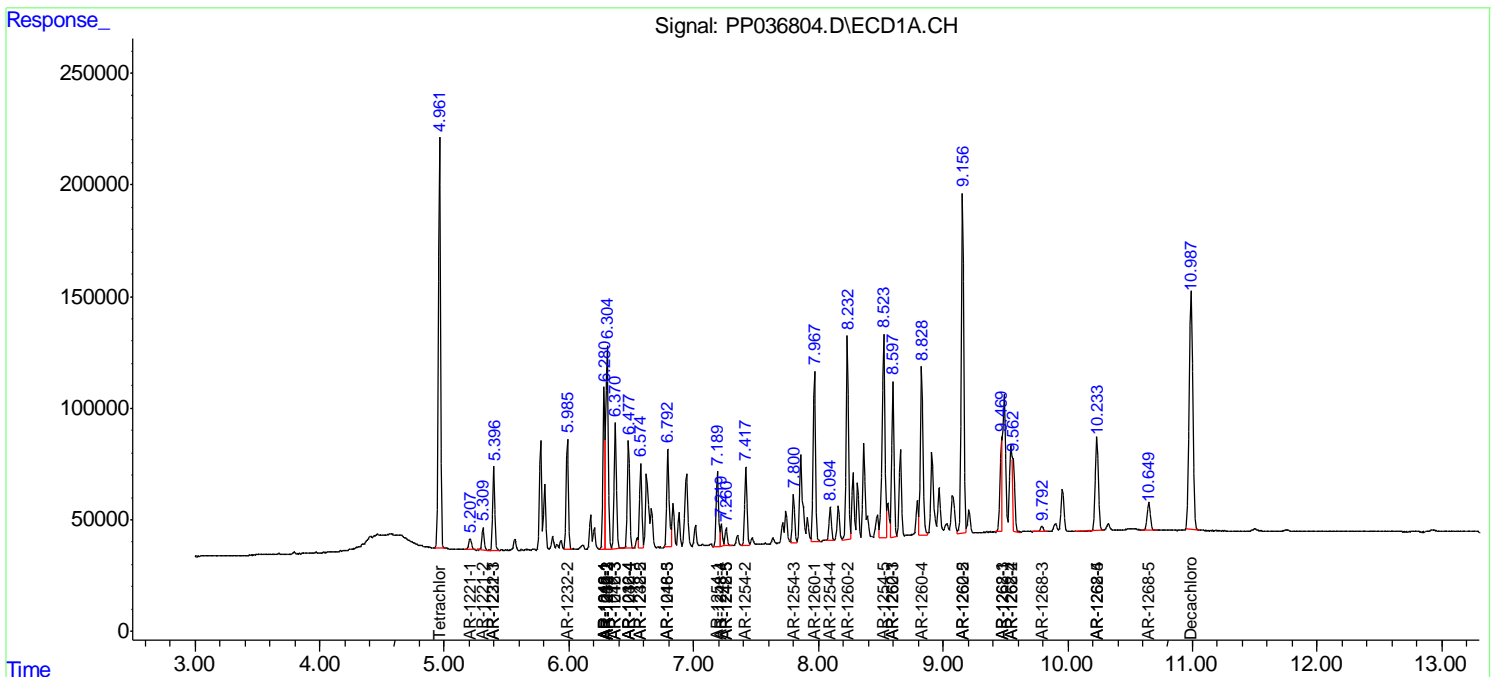
(f)=RT Delta > 1/2 Window (#)=Amounts differ by > 25% (m)=manual int.

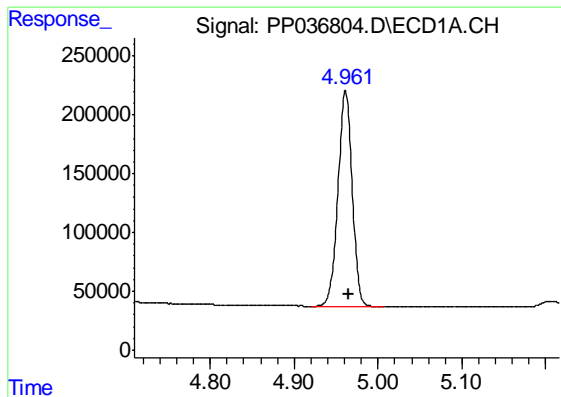
Data Path : Z:\pestpcbsrv\HPCHEM1\ECD_P\Data\PP062521\
 Data File : PP036804.D
 Signal(s) : Signal #1: ECD1A.CH Signal #2: ECD2B.CH
 Acq On : 25 Jun 2021 17:29
 Operator : DD\AJ
 Sample : AR1660CCC500
 Misc :
 ALS Vial : 3 Sample Multiplier: 1

Instrument :
 ECD_P
 ClientSampled :
 AR1660CCC500

Integration File signal 1: autoint1.e
 Integration File signal 2: autoint2.e
 Quant Time: Jun 28 04:20:27 2021
 Quant Method : Z:\pestpcbsrv\HPCHEM1\ECD_P\methods\PP061721.M
 Quant Title : GC EXTRACTABLES
 QLast Update : Fri Jun 18 06:06:19 2021
 Response via : Initial Calibration
 Integrator: ChemStation 6890 Scale Mode: Small noise peaks clipped

Volume Inj. : 2 µl
 Signal #1 Phase : ZB-MR1 Signal #2 Phase: ZB-MR2
 Signal #1 Info : 30Mx0.32mmx 0.50µ Signal #2 Info : 30M x 0.32mm x 0.25µm

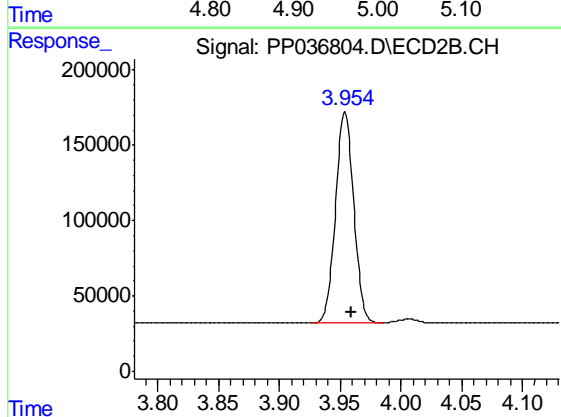




#1 Tetrachloro-m-xylene

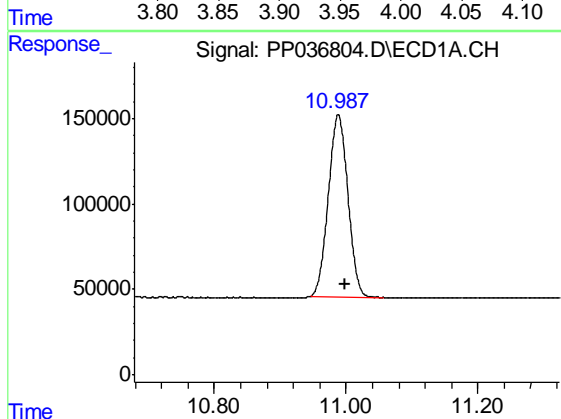
R.T.: 4.961 min
Delta R.T.: -0.004 min
Response: 2160758
Conc: 48.89 ng/ml

Instrument :
ECD_P
ClientSampleId :
AR1660CCC500



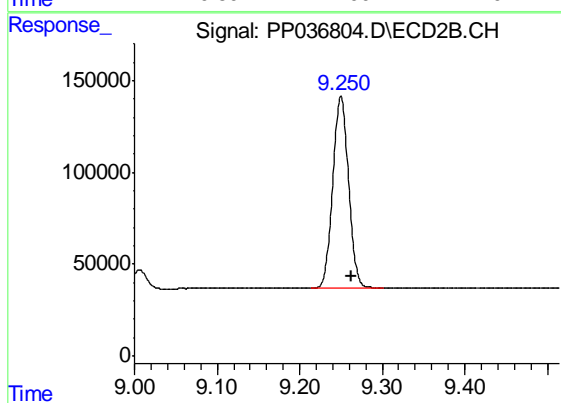
#1 Tetrachloro-m-xylene

R.T.: 3.954 min
Delta R.T.: -0.005 min
Response: 1456980
Conc: 47.04 ng/ml



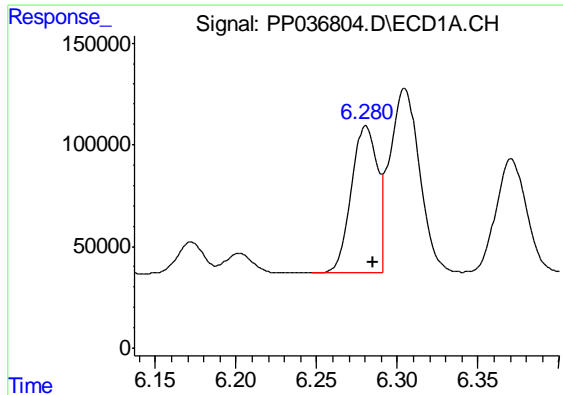
#2 Decachlorobiphenyl

R.T.: 10.988 min
Delta R.T.: -0.010 min
Response: 2173253
Conc: 50.66 ng/ml



#2 Decachlorobiphenyl

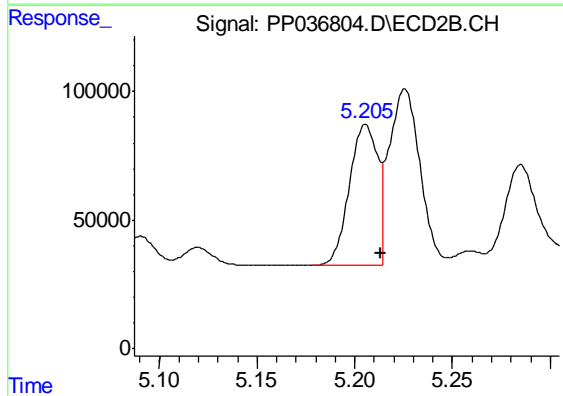
R.T.: 9.250 min
Delta R.T.: -0.013 min
Response: 1391119
Conc: 43.50 ng/ml



#3 AR-1016-1

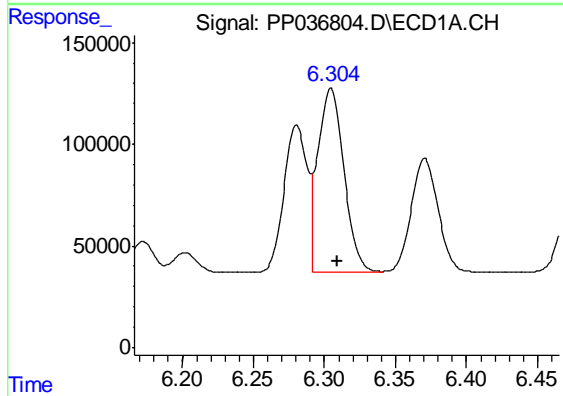
R.T.: 6.280 min
 Delta R.T.: -0.004 min
 Response: 819409
 Conc: 483.76 ng/ml

Instrument :
 ECD_P
 ClientSampleId :
 AR1660CCC500



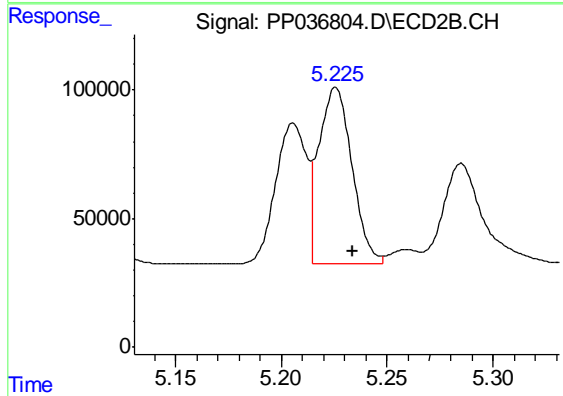
#3 AR-1016-1

R.T.: 5.205 min
 Delta R.T.: -0.008 min
 Response: 552457
 Conc: 468.64 ng/ml



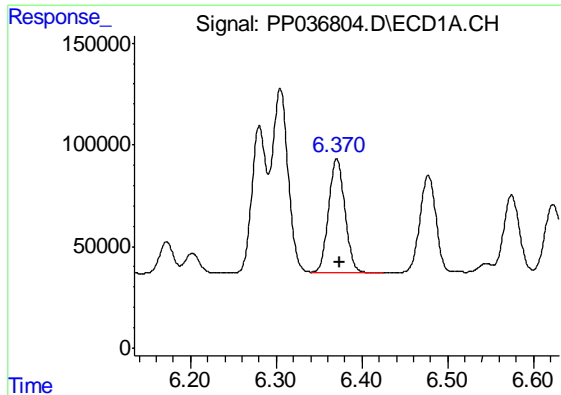
#4 AR-1016-2

R.T.: 6.305 min
 Delta R.T.: -0.005 min
 Response: 1171944
 Conc: 486.03 ng/ml



#4 AR-1016-2

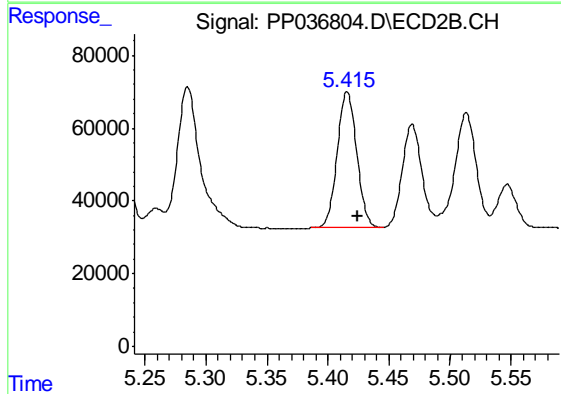
R.T.: 5.226 min
 Delta R.T.: -0.008 min
 Response: 754719
 Conc: 464.69 ng/ml



#5 AR-1016-3

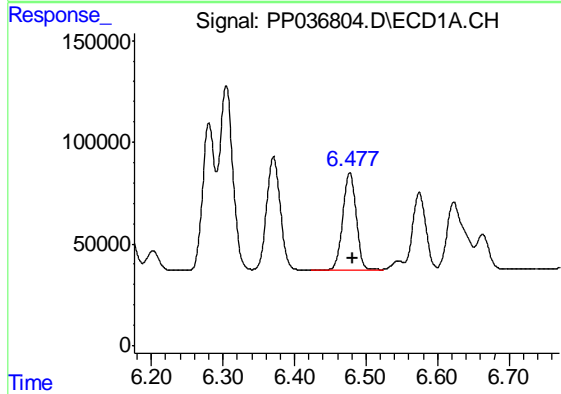
R.T.: 6.371 min
 Delta R.T.: -0.004 min
 Response: 737752
 Conc: 479.92 ng/ml

Instrument :
 ECD_P
 ClientSampleId :
 AR1660CCC500



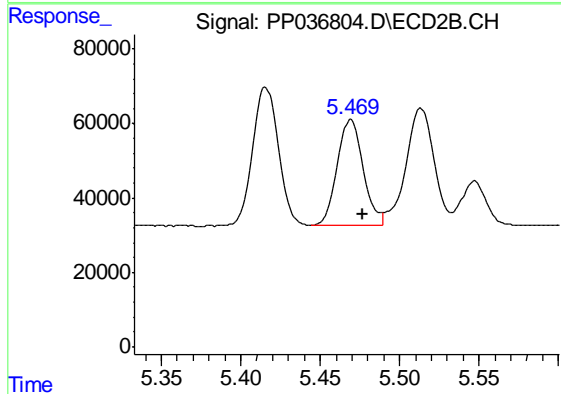
#5 AR-1016-3

R.T.: 5.416 min
 Delta R.T.: -0.008 min
 Response: 417810
 Conc: 463.09 ng/ml



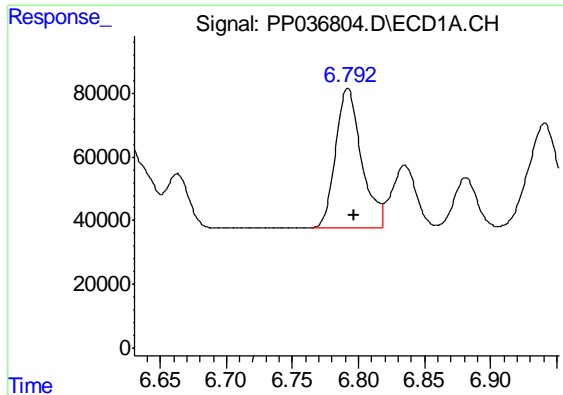
#6 AR-1016-4

R.T.: 6.477 min
 Delta R.T.: -0.004 min
 Response: 619514
 Conc: 481.91 ng/ml



#6 AR-1016-4

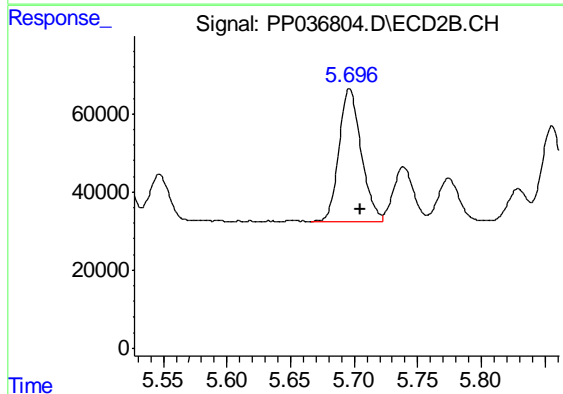
R.T.: 5.469 min
 Delta R.T.: -0.008 min
 Response: 323538
 Conc: 455.76 ng/ml



#7 AR-1016-5

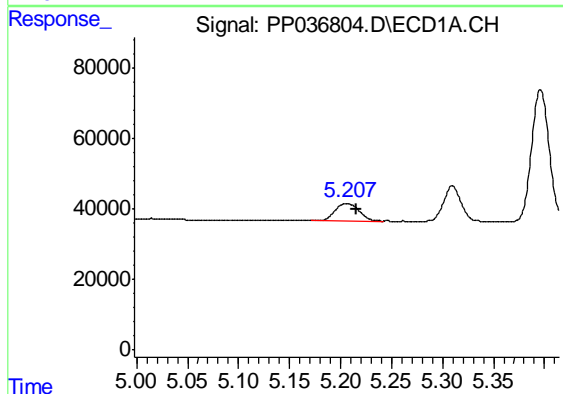
R.T.: 6.792 min
 Delta R.T.: -0.005 min
 Response: 596847
 Conc: 466.63 ng/ml

Instrument :
 ECD_P
 ClientSampleId :
 AR1660CCC500



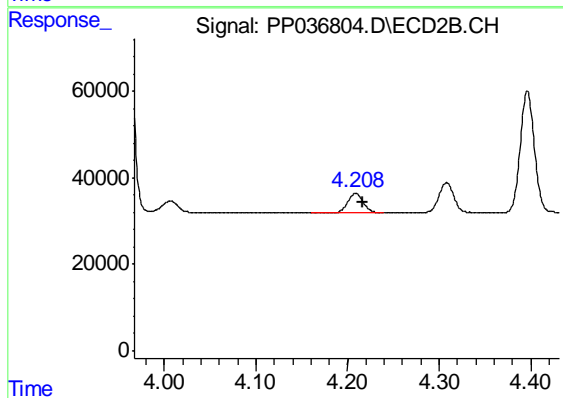
#7 AR-1016-5

R.T.: 5.696 min
 Delta R.T.: -0.008 min
 Response: 410417
 Conc: 452.89 ng/ml



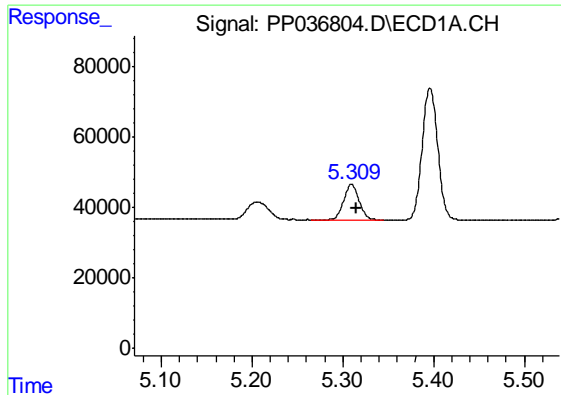
#8 AR-1221-1

R.T.: 5.207 min
 Delta R.T.: -0.009 min
 Response: 80240
 Conc: 142.92 ng/ml



#8 AR-1221-1

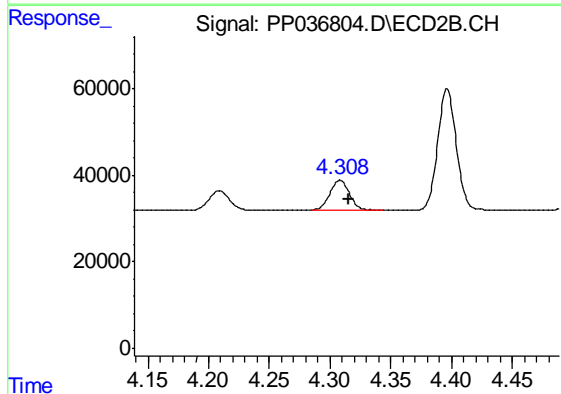
R.T.: 4.209 min
 Delta R.T.: -0.008 min
 Response: 53360
 Conc: 137.12 ng/ml



#9 AR-1221-2

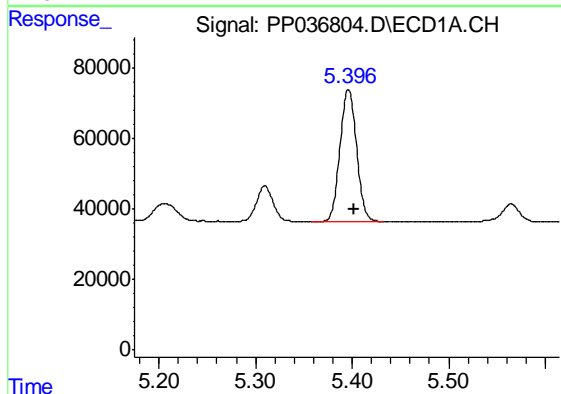
R.T.: 5.310 min
 Delta R.T.: -0.006 min
 Response: 118117
 Conc: 274.10 ng/ml

Instrument :
 ECD_P
 ClientSampleId :
 AR1660CCC500



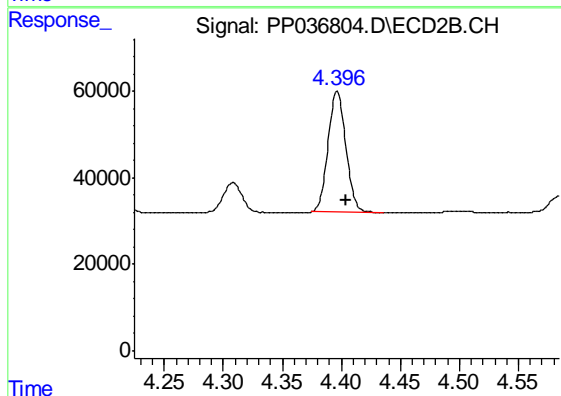
#9 AR-1221-2

R.T.: 4.308 min
 Delta R.T.: -0.007 min
 Response: 78523
 Conc: 263.07 ng/ml



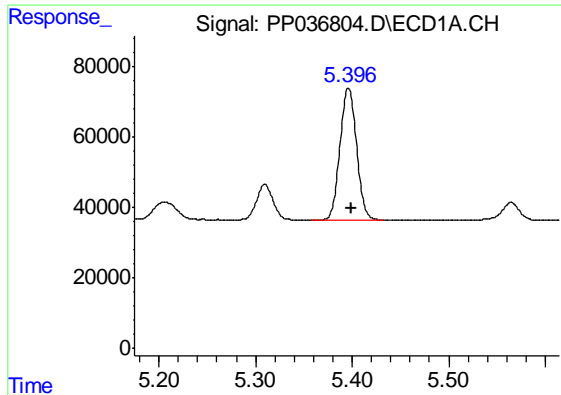
#10 AR-1221-3

R.T.: 5.396 min
 Delta R.T.: -0.006 min
 Response: 447035
 Conc: 346.75 ng/ml



#10 AR-1221-3

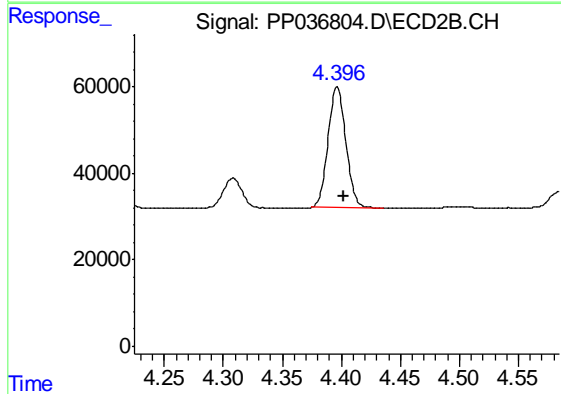
R.T.: 4.396 min
 Delta R.T.: -0.008 min
 Response: 295551
 Conc: 327.29 ng/ml



#11 AR-1232-1

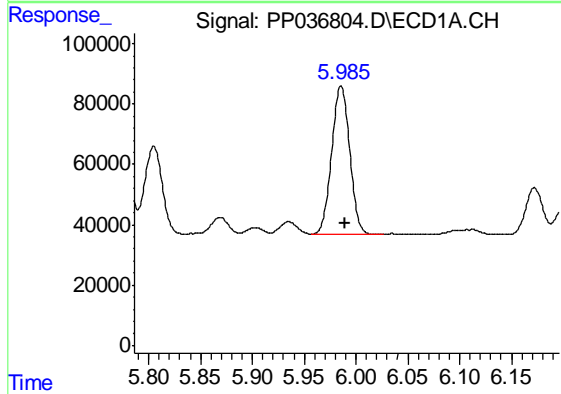
R.T.: 5.396 min
 Delta R.T.: -0.004 min
 Response: 447035
 Conc: 419.72 ng/ml

Instrument :
 ECD_P
 ClientSampleId :
 AR1660CCC500



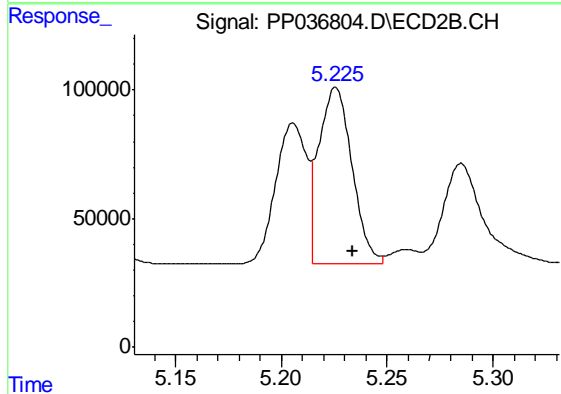
#11 AR-1232-1

R.T.: 4.396 min
 Delta R.T.: -0.006 min
 Response: 295551
 Conc: 401.75 ng/ml



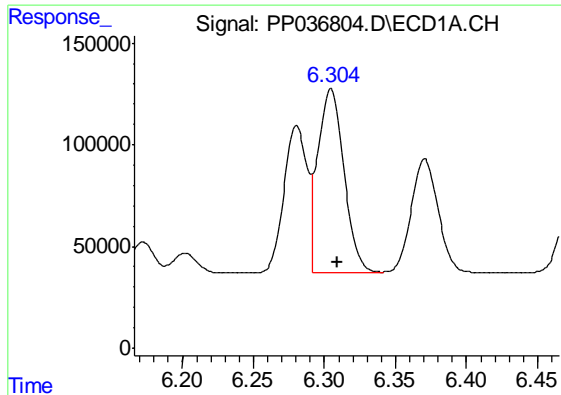
#12 AR-1232-2

R.T.: 5.986 min
 Delta R.T.: -0.004 min
 Response: 602436
 Conc: 1095.39 ng/ml



#12 AR-1232-2

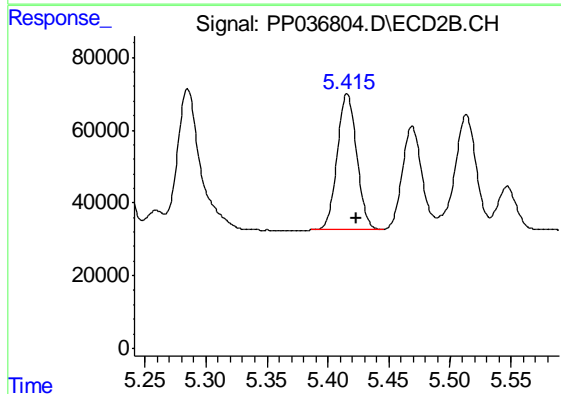
R.T.: 5.226 min
 Delta R.T.: -0.008 min
 Response: 754719
 Conc: 1128.69 ng/ml



#13 AR-1232-3

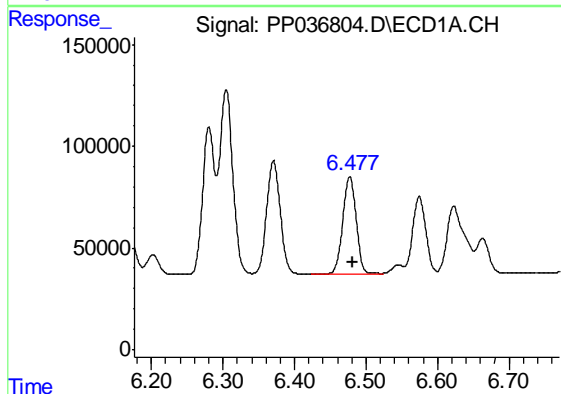
R.T.: 6.305 min
 Delta R.T.: -0.004 min
 Response: 1171944
 Conc: 1147.21 ng/ml

Instrument :
 ECD_P
 ClientSampleId :
 AR1660CCC500



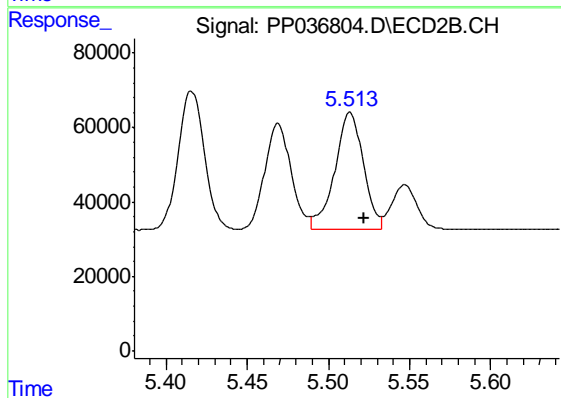
#13 AR-1232-3

R.T.: 5.416 min
 Delta R.T.: -0.008 min
 Response: 417810
 Conc: 1151.71 ng/ml



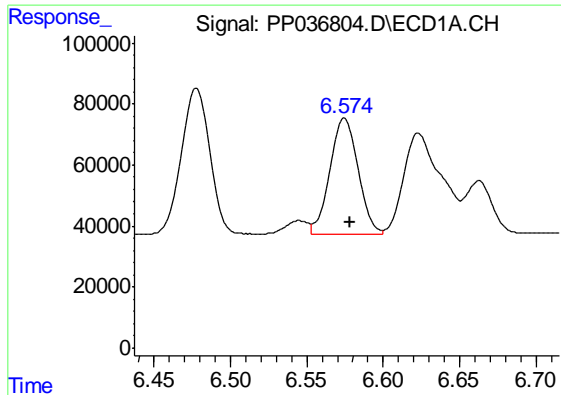
#14 AR-1232-4

R.T.: 6.477 min
 Delta R.T.: -0.005 min
 Response: 619514
 Conc: 1147.71 ng/ml



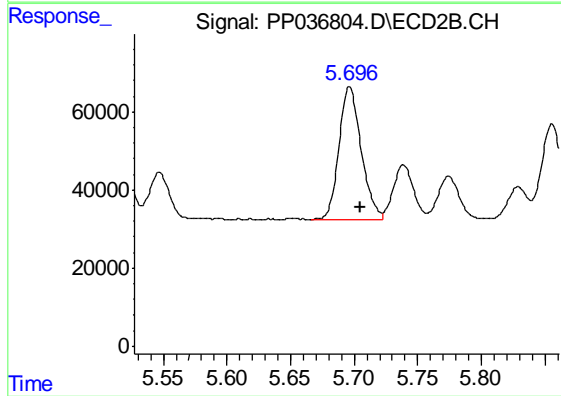
#14 AR-1232-4

R.T.: 5.513 min
 Delta R.T.: -0.008 min
 Response: 389655
 Conc: 1244.34 ng/ml

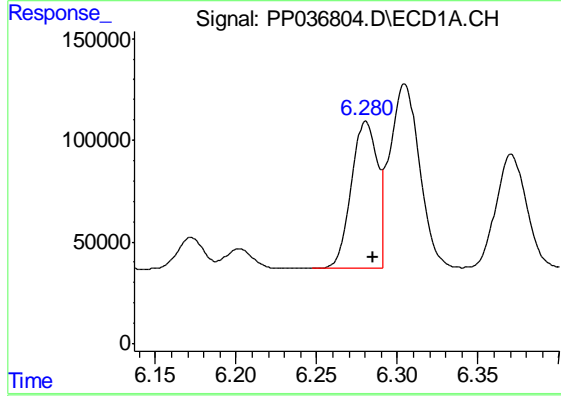


#15 AR-1232-5
 R.T.: 6.575 min
 Delta R.T.: -0.004 min
 Response: 484188
 Conc: 1321.11 ng/ml

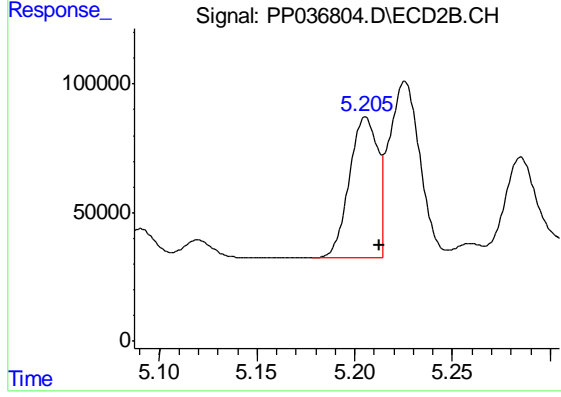
Instrument :
 ECD_P
 ClientSampleId :
 AR1660CCC500



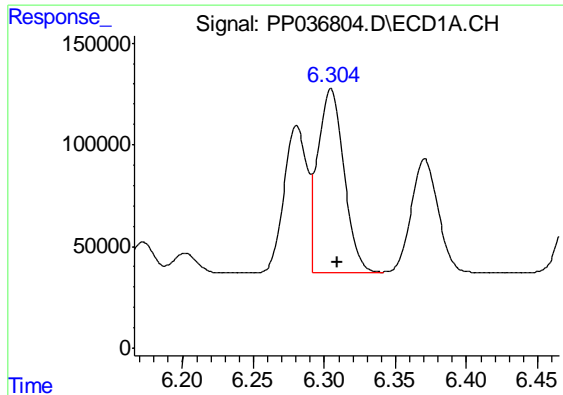
#15 AR-1232-5
 R.T.: 5.696 min
 Delta R.T.: -0.008 min
 Response: 410417
 Conc: 1152.23 ng/ml



#16 AR-1242-1
 R.T.: 6.280 min
 Delta R.T.: -0.005 min
 Response: 819409
 Conc: 638.99 ng/ml



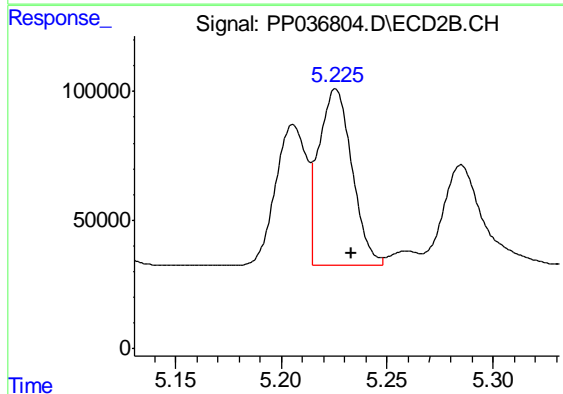
#16 AR-1242-1
 R.T.: 5.205 min
 Delta R.T.: -0.007 min
 Response: 552457
 Conc: 620.67 ng/ml



#17 AR-1242-2

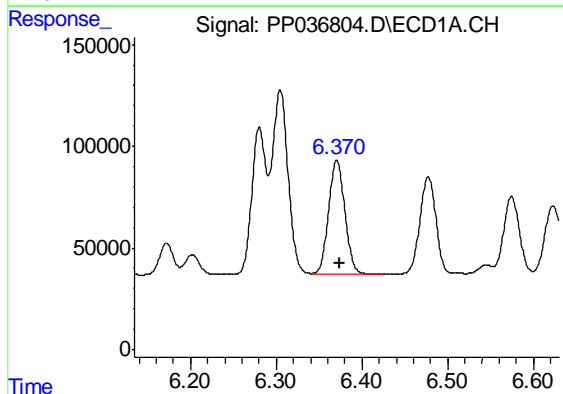
R.T.: 6.305 min
Delta R.T.: -0.004 min
Response: 1171944
Conc: 642.22 ng/ml

Instrument :
ECD_P
ClientSampleId :
AR1660CCC500



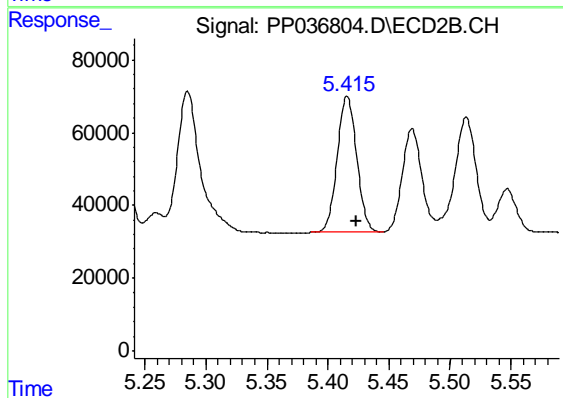
#17 AR-1242-2

R.T.: 5.226 min
Delta R.T.: -0.007 min
Response: 754719
Conc: 618.72 ng/ml



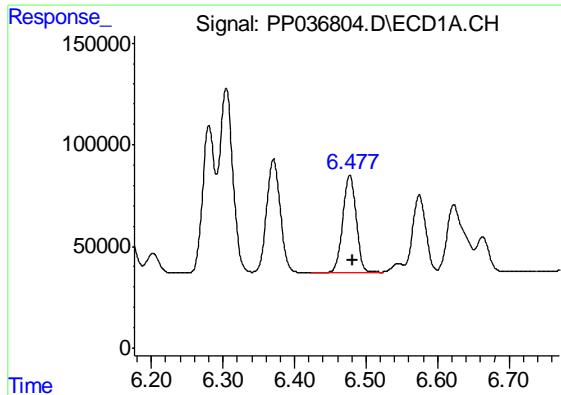
#18 AR-1242-3

R.T.: 6.371 min
Delta R.T.: -0.004 min
Response: 737752
Conc: 628.86 ng/ml



#18 AR-1242-3

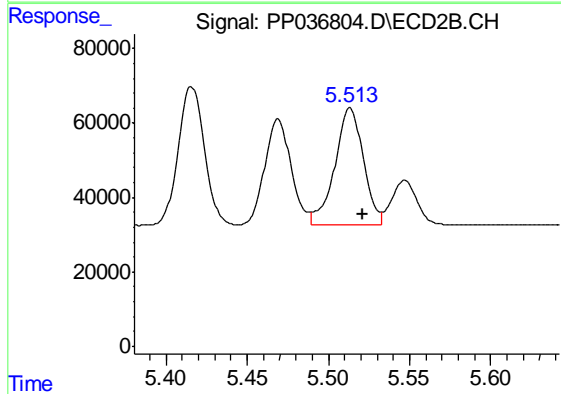
R.T.: 5.416 min
Delta R.T.: -0.007 min
Response: 417810
Conc: 620.93 ng/ml



#19 AR-1242-4

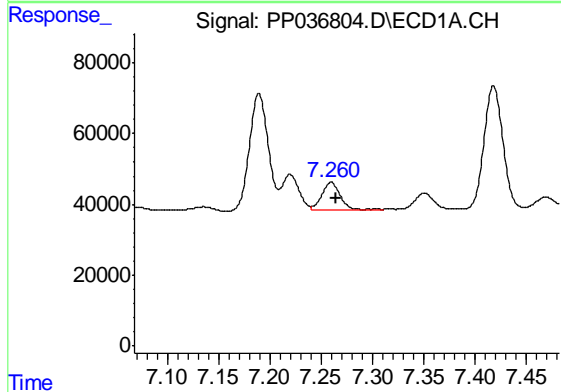
R.T.: 6.477 min
 Delta R.T.: -0.005 min
 Response: 619514
 Conc: 640.15 ng/ml

Instrument :
 ECD_P
 ClientSampleId :
 AR1660CCC500



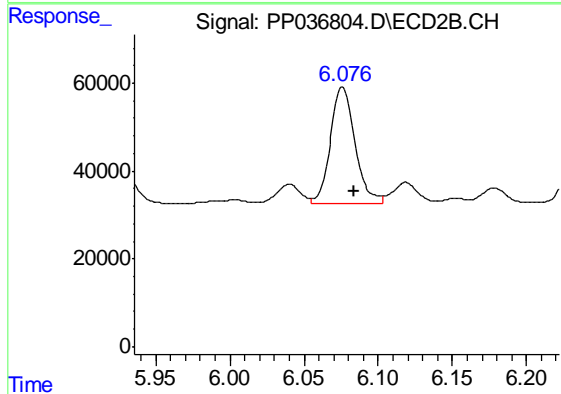
#19 AR-1242-4

R.T.: 5.513 min
 Delta R.T.: -0.008 min
 Response: 389655
 Conc: 601.85 ng/ml



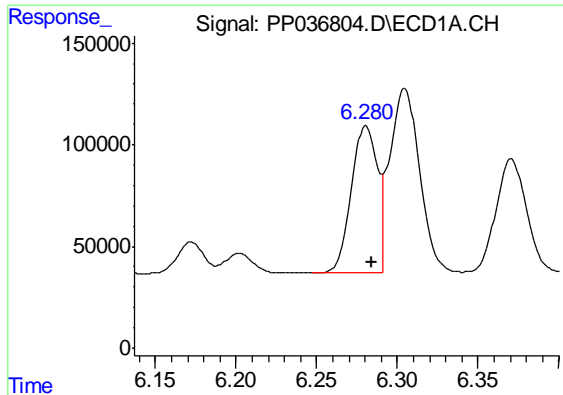
#20 AR-1242-5

R.T.: 7.260 min
 Delta R.T.: -0.005 min
 Response: 97969
 Conc: 93.14 ng/ml



#20 AR-1242-5

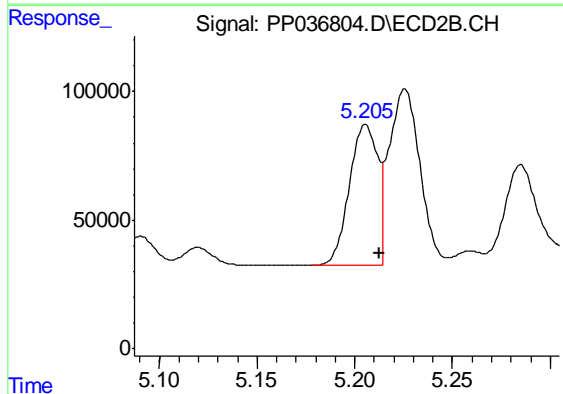
R.T.: 6.076 min
 Delta R.T.: -0.008 min
 Response: 302413
 Conc: 370.65 ng/ml



#21 AR-1248-1

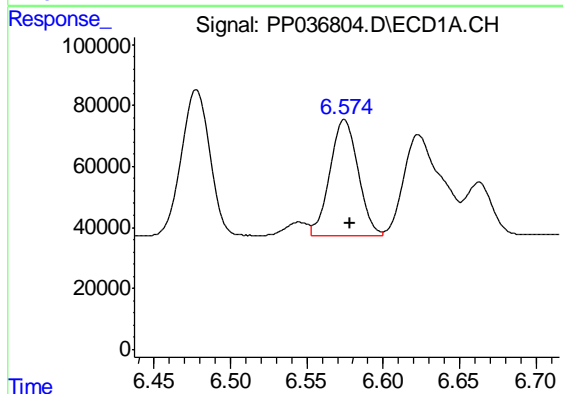
R.T.: 6.280 min
 Delta R.T.: -0.004 min
 Response: 819409
 Conc: 812.24 ng/ml

Instrument :
 ECD_P
 ClientSampleId :
 AR1660CCC500



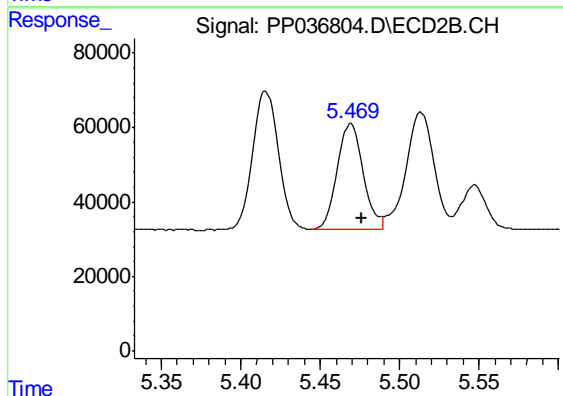
#21 AR-1248-1

R.T.: 5.205 min
 Delta R.T.: -0.007 min
 Response: 552457
 Conc: 792.89 ng/ml



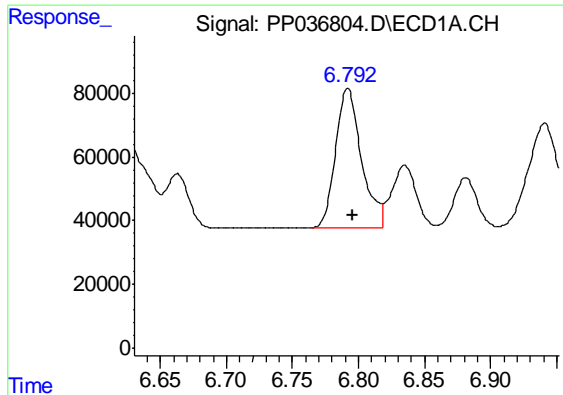
#22 AR-1248-2

R.T.: 6.575 min
 Delta R.T.: -0.004 min
 Response: 484188
 Conc: 356.53 ng/ml



#22 AR-1248-2

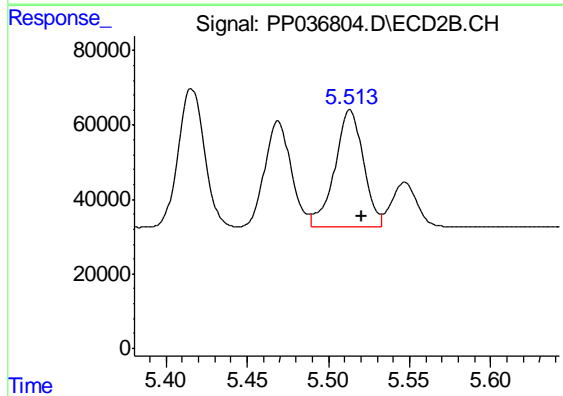
R.T.: 5.469 min
 Delta R.T.: -0.007 min
 Response: 323538
 Conc: 341.58 ng/ml



#23 AR-1248-3

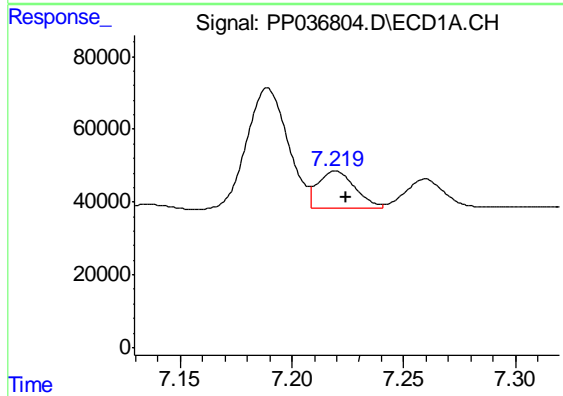
R.T.: 6.792 min
 Delta R.T.: -0.004 min
 Response: 596847
 Conc: 366.82 ng/ml

Instrument :
 ECD_P
 ClientSampleId :
 AR1660CCC500



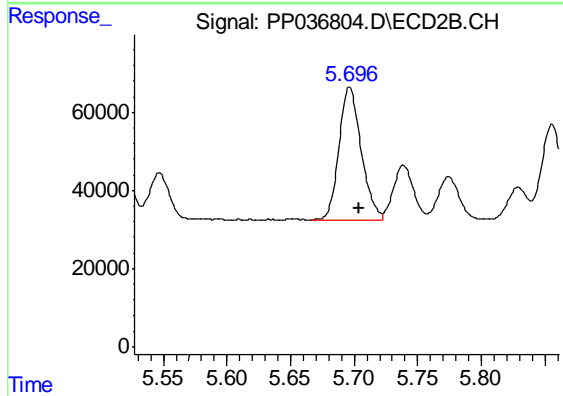
#23 AR-1248-3

R.T.: 5.513 min
 Delta R.T.: -0.007 min
 Response: 389655
 Conc: 393.81 ng/ml



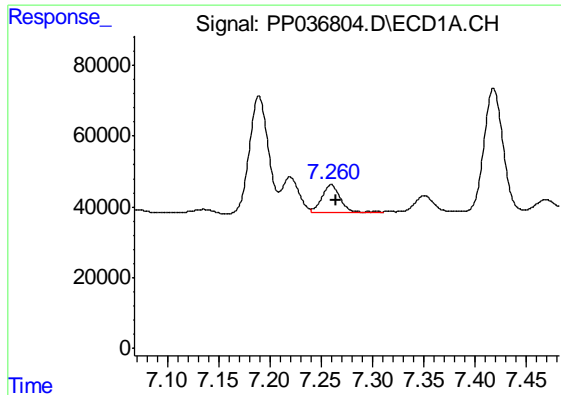
#24 AR-1248-4

R.T.: 7.220 min
 Delta R.T.: -0.005 min
 Response: 118729
 Conc: 65.03 ng/ml



#24 AR-1248-4

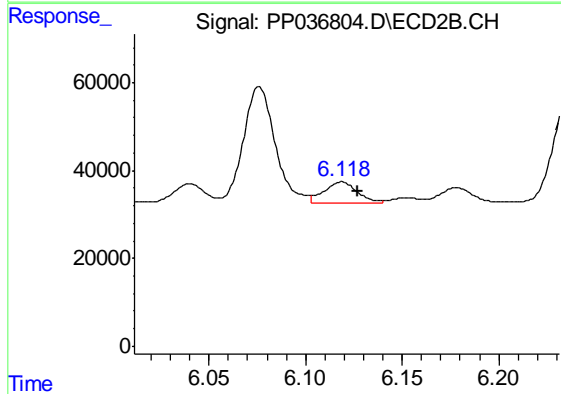
R.T.: 5.696 min
 Delta R.T.: -0.008 min
 Response: 410417
 Conc: 350.87 ng/ml



#25 AR-1248-5

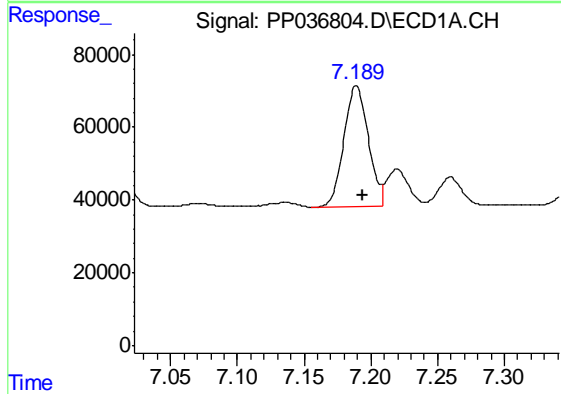
R.T.: 7.260 min
 Delta R.T.: -0.005 min
 Response: 97969
 Conc: 54.34 ng/ml

Instrument :
 ECD_P
 ClientSampleId :
 AR1660CCC500



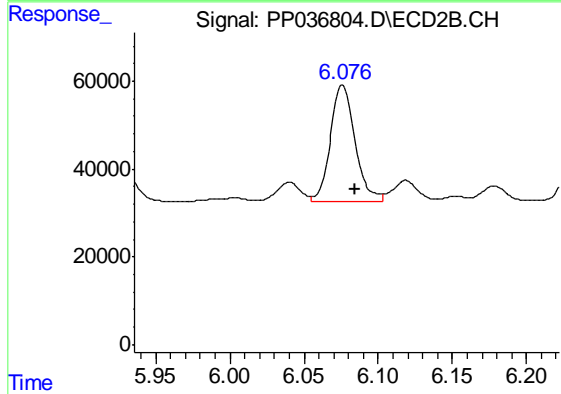
#25 AR-1248-5

R.T.: 6.119 min
 Delta R.T.: -0.008 min
 Response: 55423
 Conc: 46.72 ng/ml



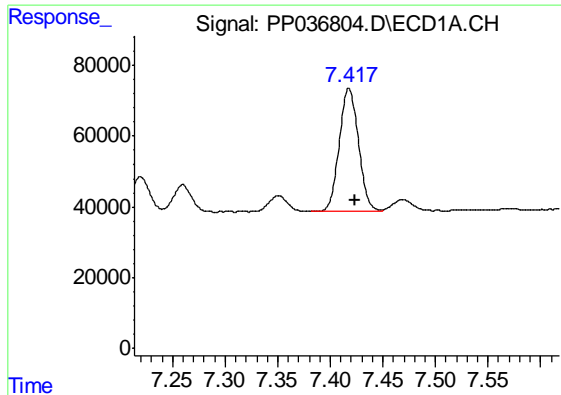
#26 AR-1254-1

R.T.: 7.189 min
 Delta R.T.: -0.005 min
 Response: 424341
 Conc: 241.29 ng/ml



#26 AR-1254-1

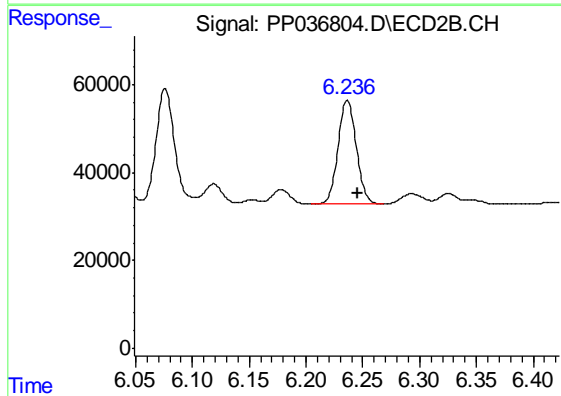
R.T.: 6.076 min
 Delta R.T.: -0.008 min
 Response: 302413
 Conc: 178.48 ng/ml



#27 AR-1254-2

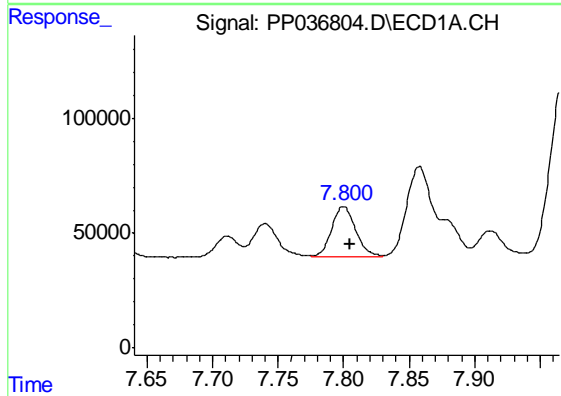
R.T.: 7.418 min
 Delta R.T.: -0.006 min
 Response: 446399
 Conc: 164.98 ng/ml

Instrument :
 ECD_P
 ClientSampleId :
 AR1660CCC500



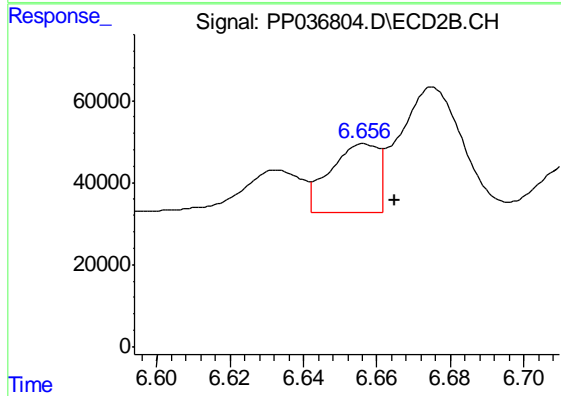
#27 AR-1254-2

R.T.: 6.236 min
 Delta R.T.: -0.009 min
 Response: 266619
 Conc: 179.25 ng/ml



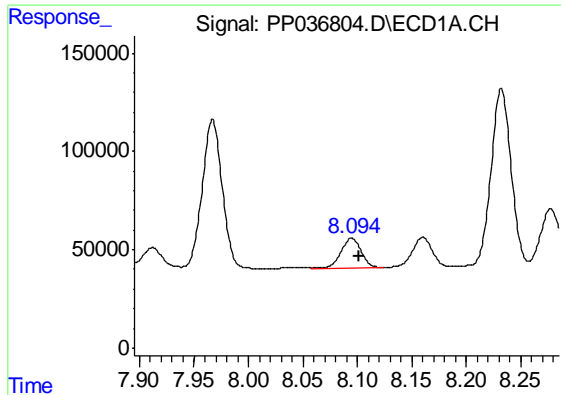
#28 AR-1254-3

R.T.: 7.800 min
 Delta R.T.: -0.005 min
 Response: 276766
 Conc: 93.44 ng/ml



#28 AR-1254-3

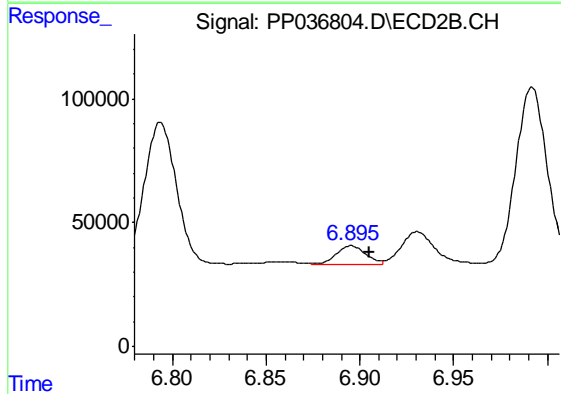
R.T.: 6.657 min
 Delta R.T.: -0.008 min
 Response: 151463
 Conc: 62.30 ng/ml



#29 AR-1254-4

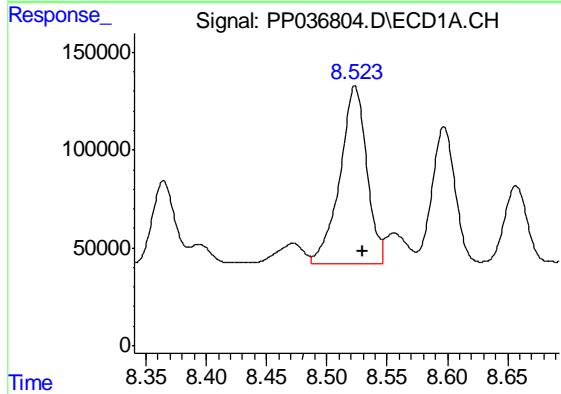
R.T.: 8.095 min
Delta R.T.: -0.006 min
Response: 196706
Conc: 89.48 ng/ml

Instrument :
ECD_P
ClientSampled :
AR1660CCC500



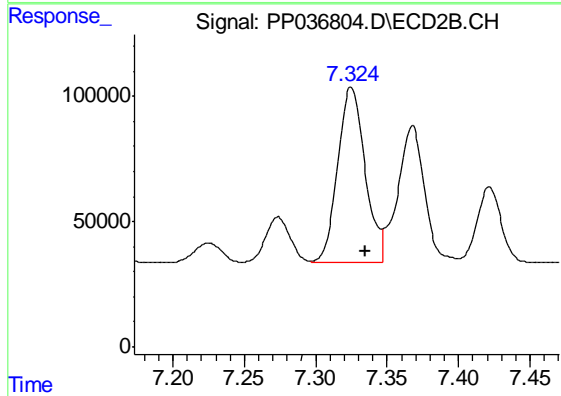
#29 AR-1254-4

R.T.: 6.896 min
Delta R.T.: -0.010 min
Response: 81330
Conc: 52.56 ng/ml



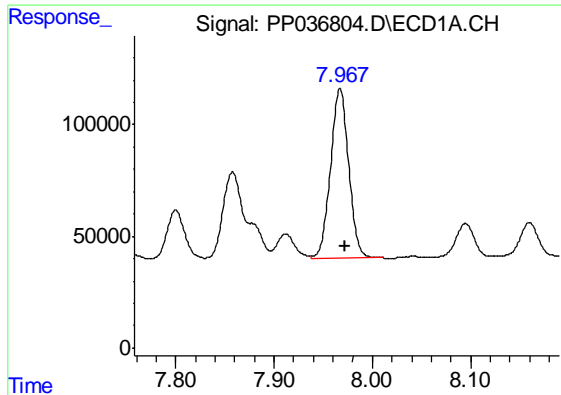
#30 AR-1254-5

R.T.: 8.523 min
Delta R.T.: -0.006 min
Response: 1407208
Conc: 591.73 ng/ml



#30 AR-1254-5

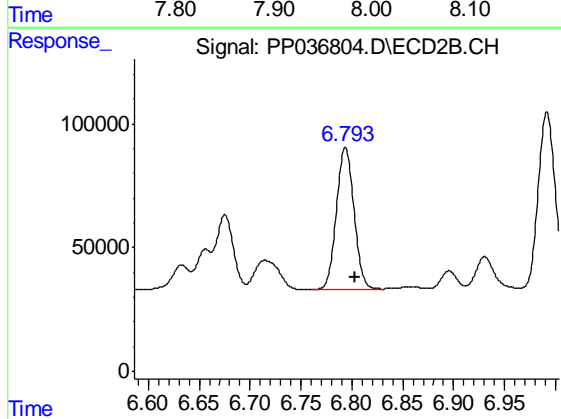
R.T.: 7.325 min
Delta R.T.: -0.010 min
Response: 936993
Conc: 435.75 ng/ml



#31 AR-1260-1

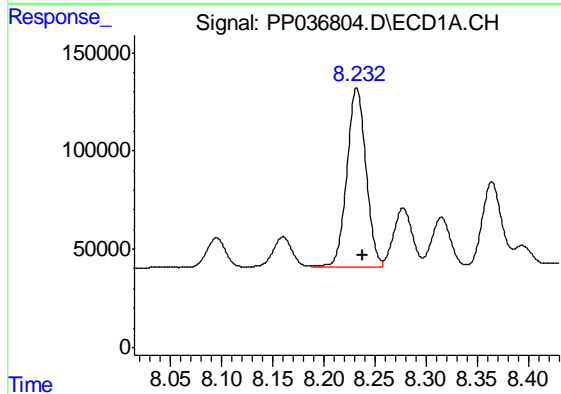
R.T.: 7.967 min
 Delta R.T.: -0.005 min
 Response: 973670
 Conc: 448.59 ng/ml

Instrument :
 ECD_P
 ClientSampleId :
 AR1660CCC500



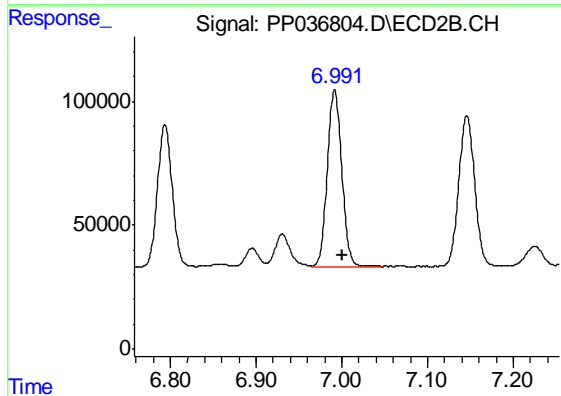
#31 AR-1260-1

R.T.: 6.794 min
 Delta R.T.: -0.009 min
 Response: 687364
 Conc: 426.92 ng/ml



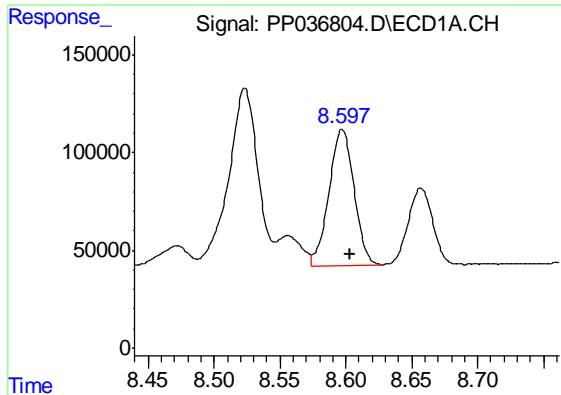
#32 AR-1260-2

R.T.: 8.232 min
 Delta R.T.: -0.006 min
 Response: 1179649
 Conc: 460.27 ng/ml



#32 AR-1260-2

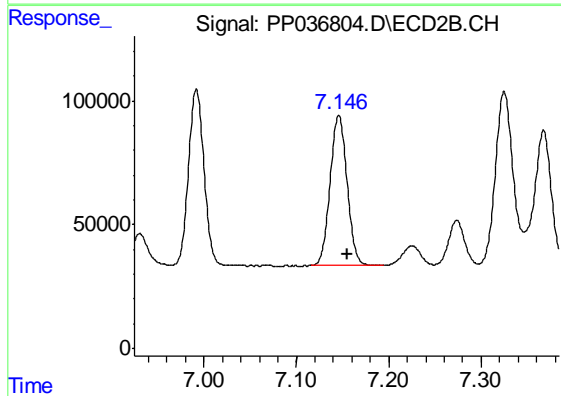
R.T.: 6.992 min
 Delta R.T.: -0.009 min
 Response: 838266
 Conc: 432.26 ng/ml



#33 AR-1260-3

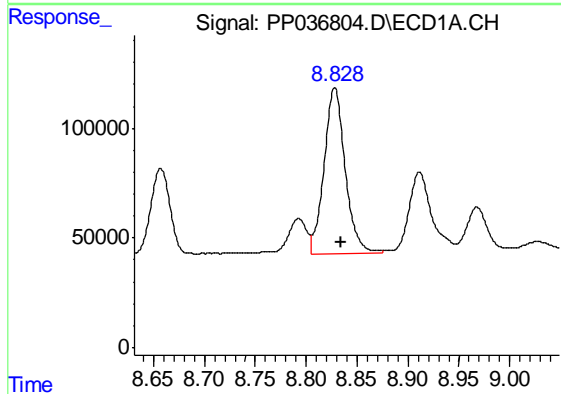
R.T.: 8.597 min
Delta R.T.: -0.006 min
Response: 926859
Conc: 462.39 ng/ml

Instrument :
ECD_P
ClientSampleId :
AR1660CCC500



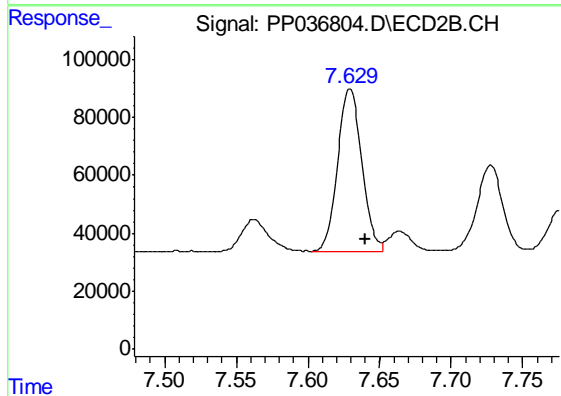
#33 AR-1260-3

R.T.: 7.146 min
Delta R.T.: -0.009 min
Response: 777426
Conc: 427.46 ng/ml



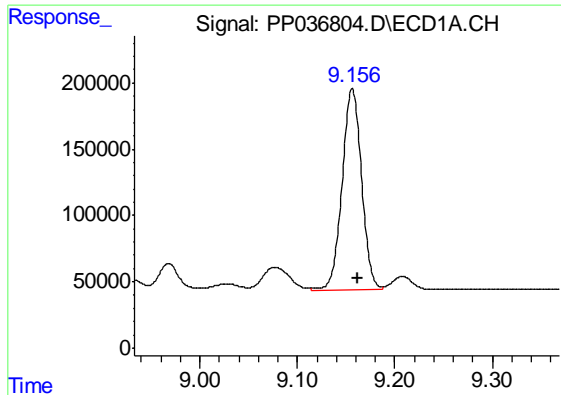
#34 AR-1260-4

R.T.: 8.828 min
Delta R.T.: -0.006 min
Response: 1088289
Conc: 459.34 ng/ml



#34 AR-1260-4

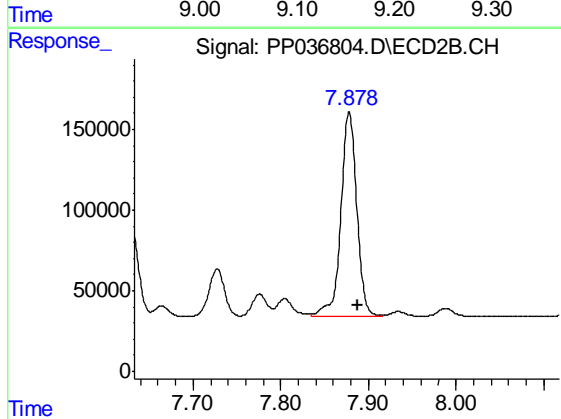
R.T.: 7.629 min
Delta R.T.: -0.011 min
Response: 661076
Conc: 426.30 ng/ml



#35 AR-1260-5

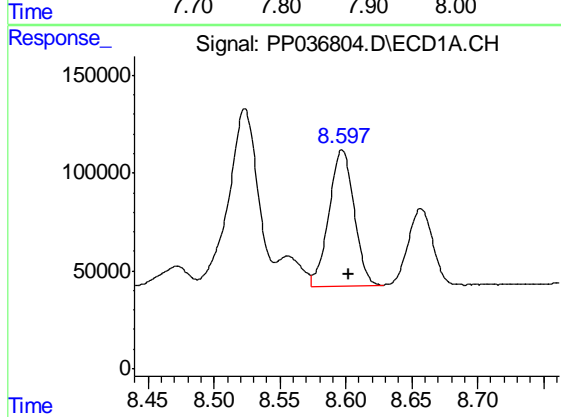
R.T.: 9.156 min
 Delta R.T.: -0.006 min
 Response: 2104600
 Conc: 471.68 ng/ml

Instrument :
 ECD_P
 ClientSampleId :
 AR1660CCC500



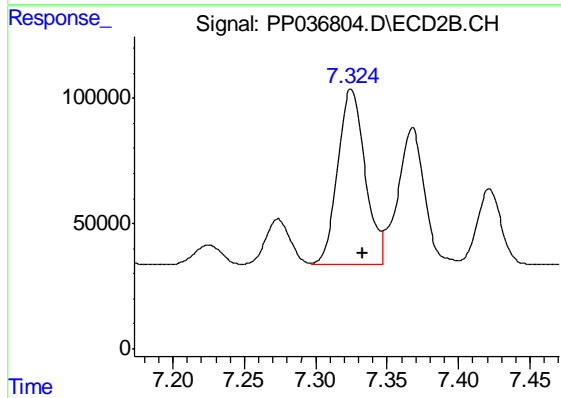
#35 AR-1260-5

R.T.: 7.878 min
 Delta R.T.: -0.009 min
 Response: 1602567
 Conc: 436.10 ng/ml



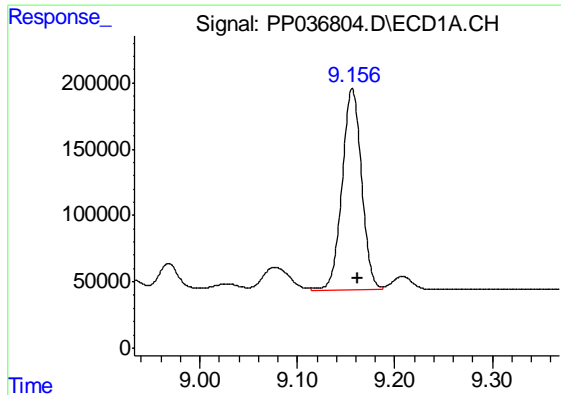
#36 AR-1262-1

R.T.: 8.597 min
 Delta R.T.: -0.005 min
 Response: 926859
 Conc: 325.28 ng/ml



#36 AR-1262-1

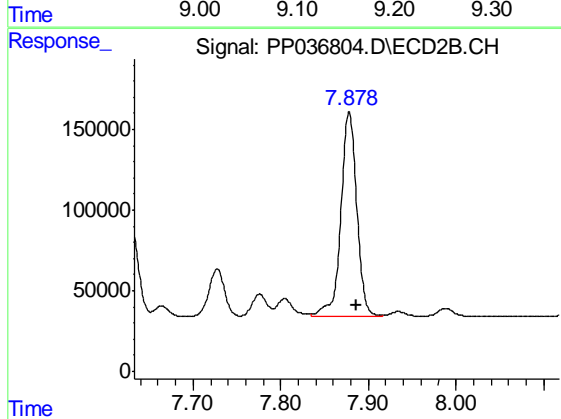
R.T.: 7.325 min
 Delta R.T.: -0.008 min
 Response: 936993
 Conc: 786.14 ng/ml



#37 AR-1262-2

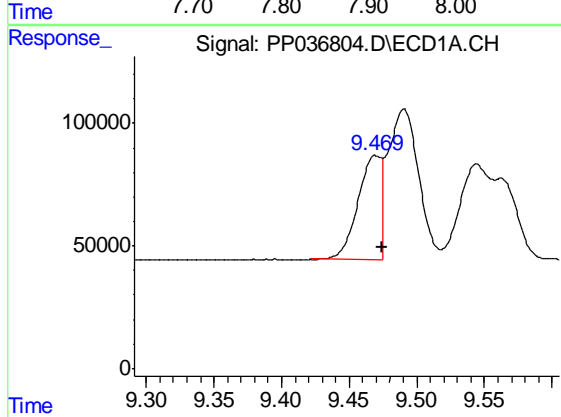
R.T.: 9.156 min
Delta R.T.: -0.005 min
Response: 2104600
Conc: 414.22 ng/ml

Instrument :
ECD_P
ClientSampleId :
AR1660CCC500



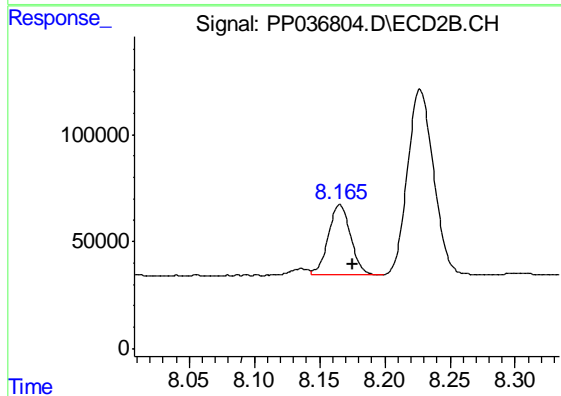
#37 AR-1262-2

R.T.: 7.878 min
Delta R.T.: -0.009 min
Response: 1602567
Conc: 408.81 ng/ml



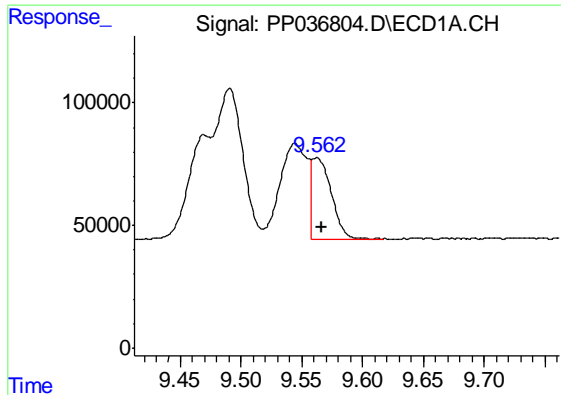
#38 AR-1262-3

R.T.: 9.470 min
Delta R.T.: -0.005 min
Response: 495626
Conc: 133.79 ng/ml



#38 AR-1262-3

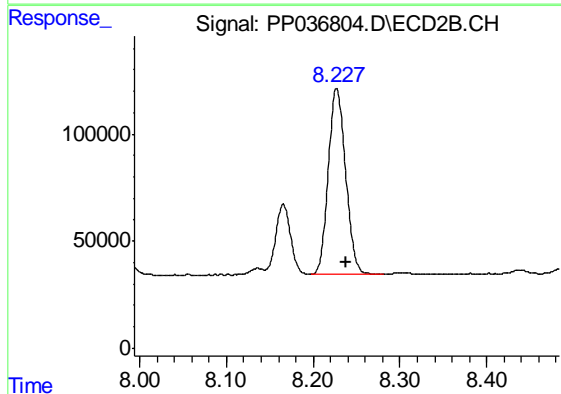
R.T.: 8.165 min
Delta R.T.: -0.010 min
Response: 391944
Conc: 246.28 ng/ml



#39 AR-1262-4

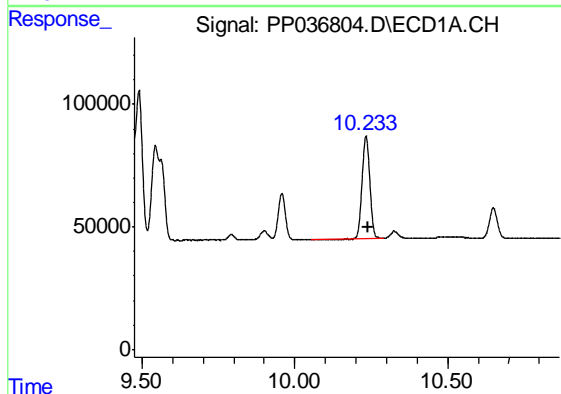
R.T.: 9.562 min
Delta R.T.: -0.005 min
Response: 369771
Conc: 128.74 ng/ml

Instrument :
ECD_P
ClientSampleId :
AR1660CCC500



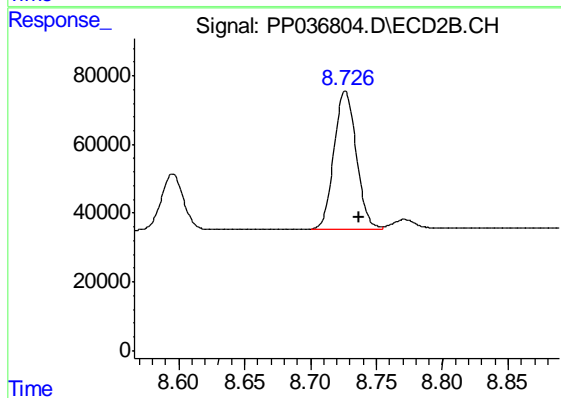
#39 AR-1262-4

R.T.: 8.227 min
Delta R.T.: -0.011 min
Response: 1201046
Conc: 403.53 ng/ml



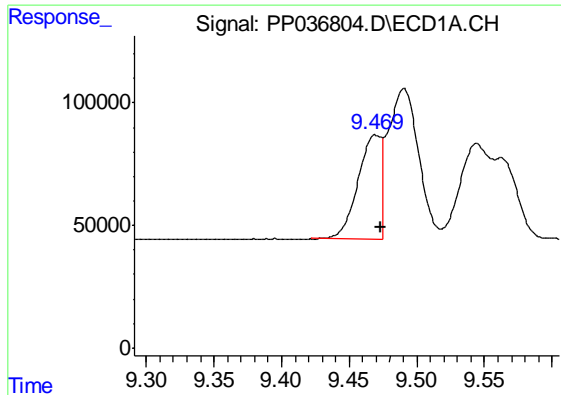
#40 AR-1262-5

R.T.: 10.233 min
Delta R.T.: -0.007 min
Response: 751638
Conc: 355.77 ng/ml



#40 AR-1262-5

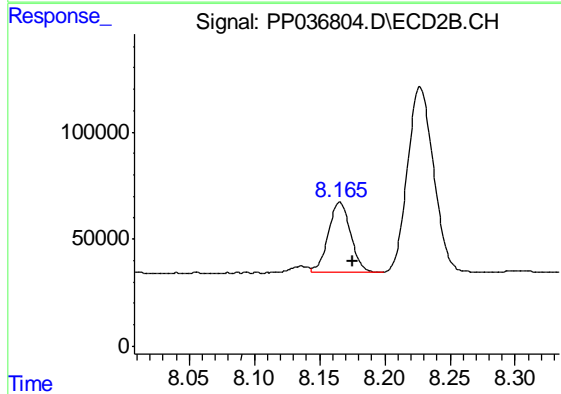
R.T.: 8.726 min
Delta R.T.: -0.010 min
Response: 471711
Conc: 331.01 ng/ml



#41 AR-1268-1

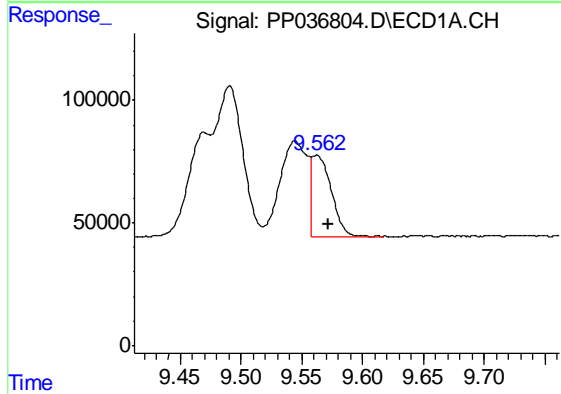
R.T.: 9.470 min
 Delta R.T.: -0.004 min
 Response: 495626
 Conc: 82.61 ng/ml

Instrument :
 ECD_P
 ClientSampleId :
 AR1660CCC500



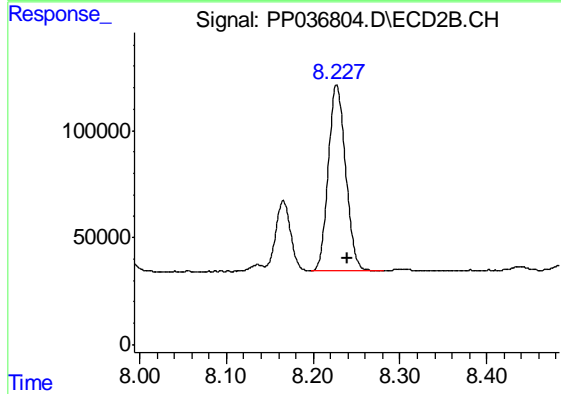
#41 AR-1268-1

R.T.: 8.165 min
 Delta R.T.: -0.010 min
 Response: 391944
 Conc: 84.17 ng/ml



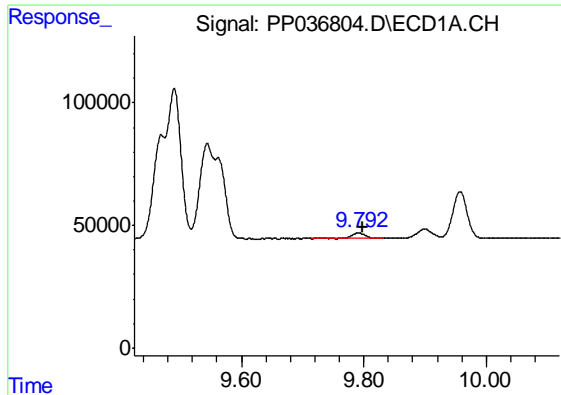
#42 AR-1268-2

R.T.: 9.562 min
 Delta R.T.: -0.010 min
 Response: 369771
 Conc: 64.87 ng/ml



#42 AR-1268-2

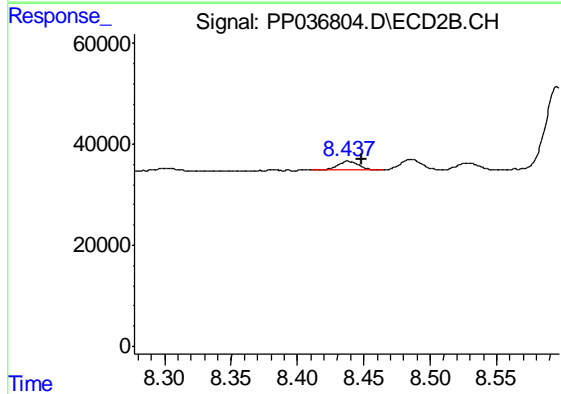
R.T.: 8.227 min
 Delta R.T.: -0.013 min
 Response: 1201046
 Conc: 278.43 ng/ml



#43 AR-1268-3

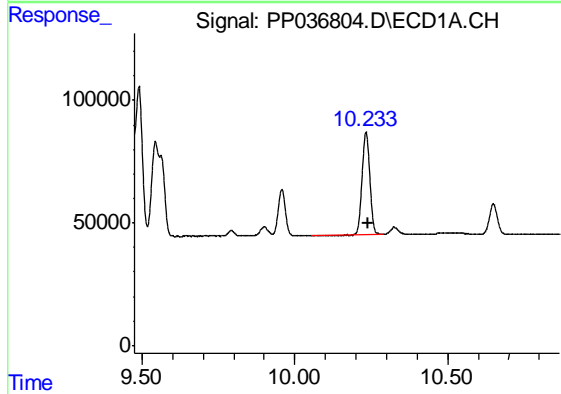
R.T.: 9.792 min
 Delta R.T.: -0.006 min
 Response: 35034
 Conc: 7.29 ng/ml

Instrument :
 ECD_P
 ClientSampleId :
 AR1660CCC500



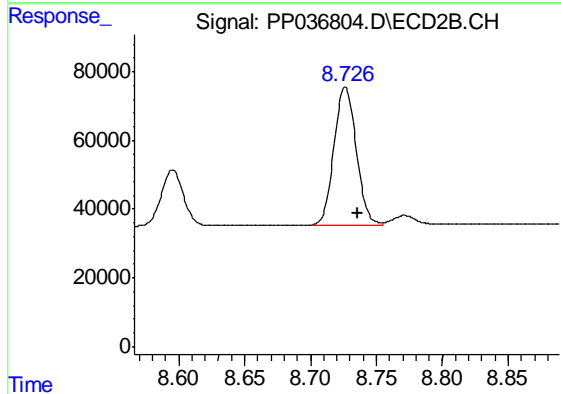
#43 AR-1268-3

R.T.: 8.438 min
 Delta R.T.: -0.010 min
 Response: 19479
 Conc: 5.34 ng/ml



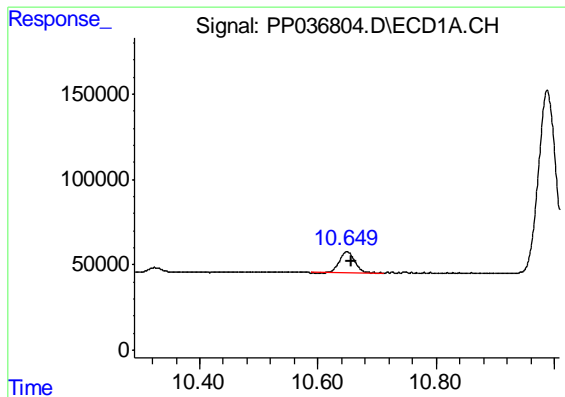
#44 AR-1268-4

R.T.: 10.233 min
 Delta R.T.: -0.007 min
 Response: 751638
 Conc: 319.10 ng/ml



#44 AR-1268-4

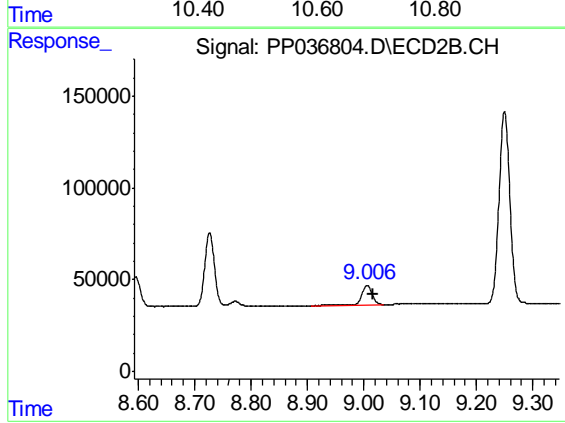
R.T.: 8.726 min
 Delta R.T.: -0.009 min
 Response: 471711
 Conc: 296.54 ng/ml



#45 AR-1268-5

R.T.: 10.649 min
Delta R.T.: -0.008 min
Response: 224066
Conc: 14.57 ng/ml

Instrument :
ECD_P
ClientSampleId :
AR1660CCC500



#45 AR-1268-5

R.T.: 9.006 min
Delta R.T.: -0.011 min
Response: 138656
Conc: 11.73 ng/ml