

Data Path : Z:\pestpcbsrv\HPCHEM1\ECD\_P\Data\PP062524\  
 Data File : PP066001.D  
 Signal(s) : Signal #1: ECD1A.ch Signal #2: ECD2B.ch  
 Acq On : 25 Jun 2024 11:10  
 Operator : YP\AJ  
 Sample : P3023-13DL 2X  
 Misc :  
 ALS Vial : 11 Sample Multiplier: 1

Instrument :  
 ECD\_P  
 ClientSampleId :  
 S02-04BDL

Integration File signal 1: autoint1.e  
 Integration File signal 2: autoint2.e  
 Quant Time: Jun 25 14:31:01 2024  
 Quant Method : Z:\pestpcbsrv\HPCHEM1\ECD\_P\methods\PP060524.M  
 Quant Title : GC EXTRACTABLES  
 QLast Update : Thu Jun 06 05:25:59 2024  
 Response via : Initial Calibration  
 Integrator: ChemStation

Volume Inj. : 2 µl  
 Signal #1 Phase : ZB-MR1 Signal #2 Phase: ZB-MR2  
 Signal #1 Info : 30Mx0.32mmx 0.50µ Signal #2 Info : 30M x 0.32mm x 0.25µm

Compound	RT#1	RT#2	Resp#1	Resp#2	ng/ml	ng/ml
----------	------	------	--------	--------	-------	-------

System Monitoring Compounds

1) SA Tetrachlo...	4.825	4.064	16070901	19281015	8.472	6.905
2) SA Decachlor...	10.841	9.245	14163742	9805180	7.201	6.656

Target Compounds

4) L1 AR-1016-2	6.042	0.000	2390772	0	24.963	N.D. #
5) L1 AR-1016-3	6.098	5.416f	1492124	1869406	24.387	29.129
6) L1 AR-1016-4	6.172f	5.416	7823998	1869406	159.095	36.226 #
8) L2 AR-1221-1	5.035	0.000	486027	0	19.045	N.D. #
9) L2 AR-1221-2	5.139f	4.373	1777991	2959433	92.066	109.631
10) L2 AR-1221-3	5.187	4.474f	5114400	766834	91.013	9.888 #
11) L3 AR-1232-1	5.187	4.474f	5114400	766834	113.037	12.131 #
12) L3 AR-1232-2	5.727	0.000	919404	0	35.301	N.D. #
13) L3 AR-1232-3	6.042	5.416f	2390772	1869406	52.849	62.070
14) L3 AR-1232-4	6.172f	5.456	7823998	653602	334.958	23.889 #
15) L3 AR-1232-5	6.279	0.000	2305495	0	117.435	N.D. #
17) L4 AR-1242-2	6.042	0.000	2390772	0	30.148	N.D. #
18) L4 AR-1242-3	6.098	5.416f	1492124	1869406	29.519	34.755
19) L4 AR-1242-4	6.172f	5.456	7823998	653602	190.664	12.272 #
20) L4 AR-1242-5	6.930	5.997	10550887	30922237	241.872	520.416 #
22) L5 AR-1248-2	6.279	5.416	2305495	1869406	36.993	25.398 #
23) L5 AR-1248-3	0.000	5.456	0	653602	N.D.	8.553 #
24) L5 AR-1248-4	6.867f	0.000	26027987	0	365.586	N.D. #
25) L5 AR-1248-5	6.930	6.043	10550887	3585585	152.203	44.945 #
26) L6 AR-1254-1	6.867	5.997	26027987	30922237	332.252	250.958
27) L6 AR-1254-2	7.082	6.140	42802618	47726018	362.330	453.273 #
28) L6 AR-1254-3	7.452	6.553	72981377	80835736	598.045	510.831
29) L6 AR-1254-4	7.736	6.780	66619321	52565866	749.149	569.279
30) L6 AR-1254-5	8.158	7.202	149.8E6	167.8E6	1529.450	1311.242
31) L7 AR-1260-1	7.615	6.683	43018834	44369503	444.153	418.108
32) L7 AR-1260-2	7.873	6.869	107.8E6	55456119	961.036	449.671 #
33) L7 AR-1260-3	8.226	7.027	15434298	43954330	176.781	378.996 #
34) L7 AR-1260-4	8.467	7.504	62096466	13371676	619.656	151.820 #
35) L7 AR-1260-5	8.826	7.739	20061935	15671779	106.381	81.875
36) L8 AR-1262-1	8.297	7.325f	5631083	3129760	105.099	56.273 #
37) L8 AR-1262-2	8.826	7.504	20061935	13371676	94.573	120.004 #
38) L8 AR-1262-3	9.189f	8.046	19307989	4135345	126.115	48.679 #
39) L8 AR-1262-4	9.241f	8.091	4591620	18289939	37.897	119.141 #
40) L8 AR-1262-5	9.995	8.622	960905	1139300	11.831	16.222 #
41) L9 AR-1268-1	9.189f	8.046	19307989	4135345	76.016	17.870 #
42) L9 AR-1268-2	0.000	8.091	0	18289939	N.D.	87.149 #
43) L9 AR-1268-3	9.526	8.317	308126	1280672	1.517	7.325 #
44) L9 AR-1268-4	9.995	8.622	960905	1139300	11.531	15.027 #
45) L9 AR-1268-5	10.459	8.951	2679485	1816008	4.033	3.467

Data Path : Z:\pestpcbsrv\HPCHEM1\ECD\_P\Data\PP062524\  
 Data File : PP066001.D  
 Signal(s) : Signal #1: ECD1A.ch Signal #2: ECD2B.ch  
 Acq On : 25 Jun 2024 11:10  
 Operator : YP\AJ  
 Sample : P3023-13DL 2X  
 Misc :  
 ALS Vial : 11 Sample Multiplier: 1

**Instrument :**  
 ECD\_P  
**ClientSampleId :**  
 S02-04BDL

Integration File signal 1: autoint1.e  
 Integration File signal 2: autoint2.e  
 Quant Time: Jun 25 14:31:01 2024  
 Quant Method : Z:\pestpcbsrv\HPCHEM1\ECD\_P\methods\PP060524.M  
 Quant Title : GC EXTRACTABLES  
 QLast Update : Thu Jun 06 05:25:59 2024  
 Response via : Initial Calibration  
 Integrator: ChemStation

Volume Inj. : 2 µl  
 Signal #1 Phase : ZB-MR1 Signal #2 Phase: ZB-MR2  
 Signal #1 Info : 30Mx0.32mmx 0.50µ Signal #2 Info : 30M x 0.32mm x 0.25µm

Compound	RT#1	RT#2	Resp#1	Resp#2	ng/ml	ng/ml
-----						
-----						

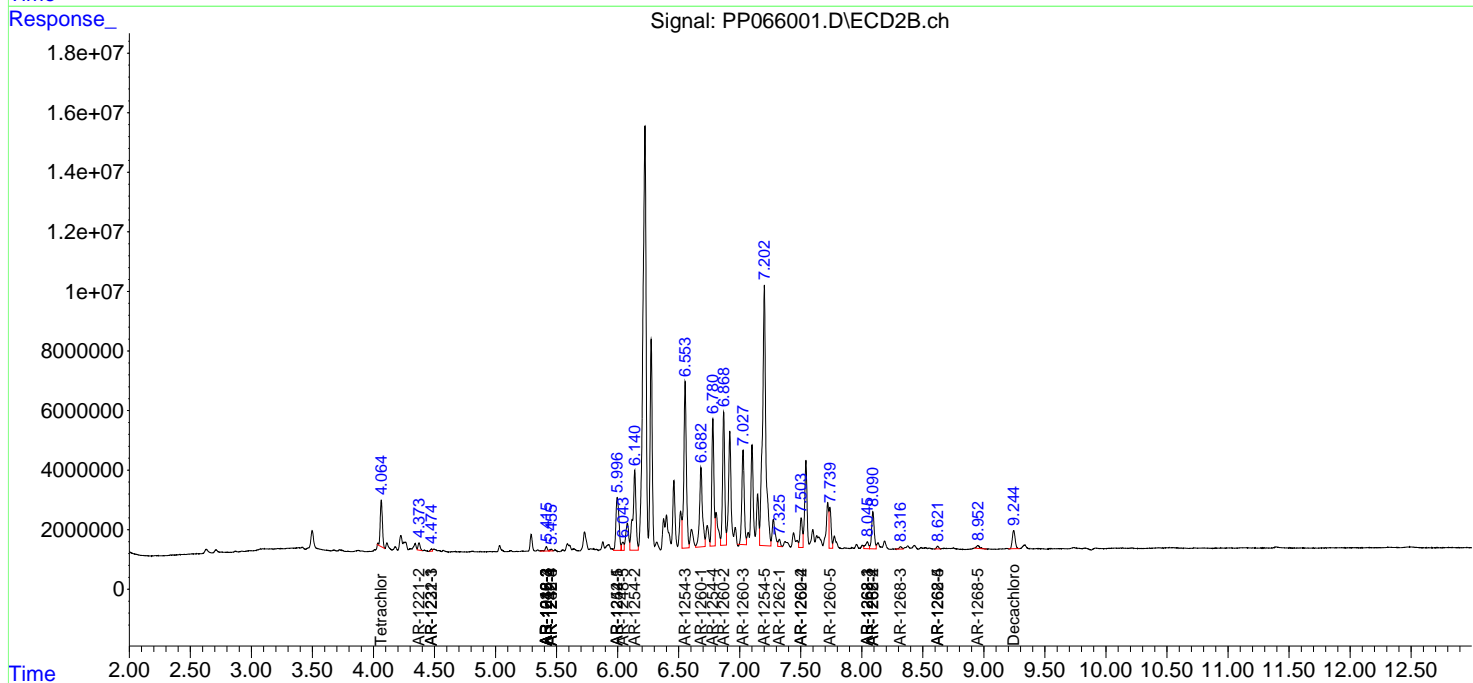
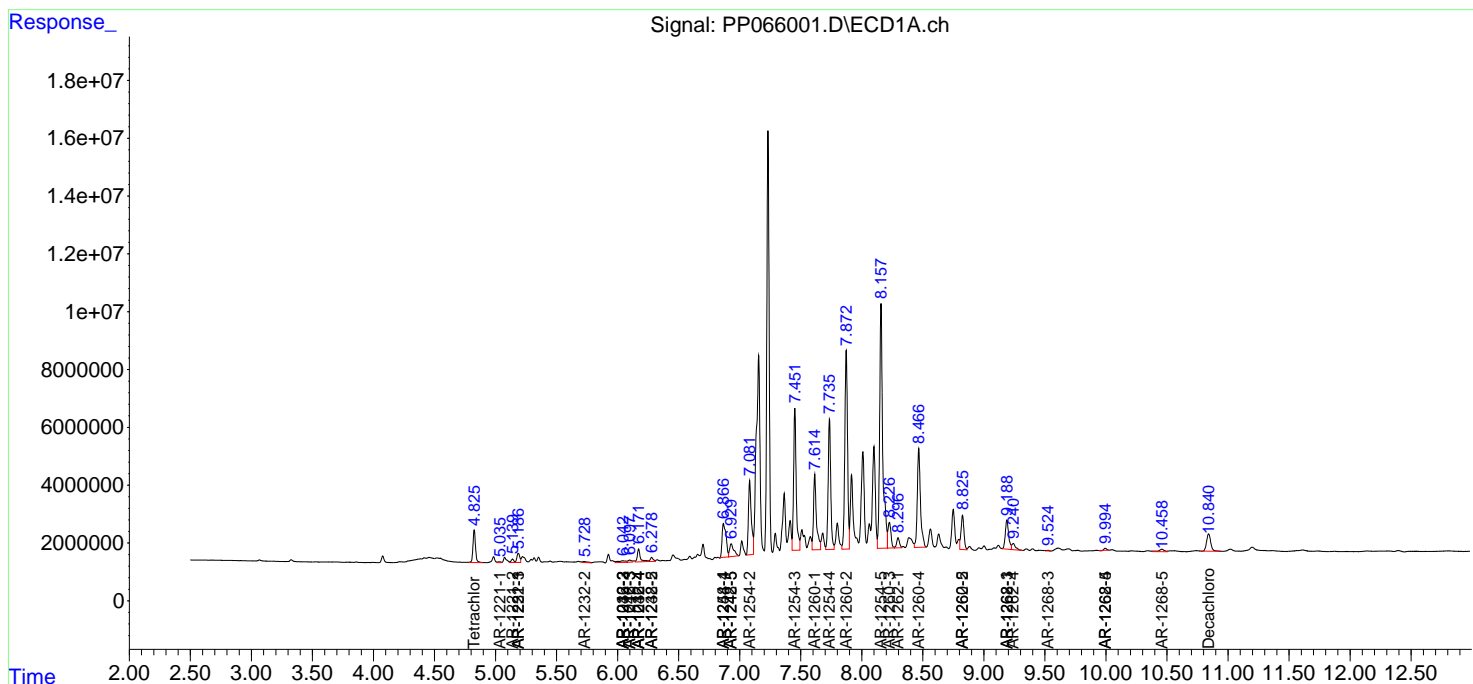
(f)=RT Delta > 1/2 Window (#)=Amounts differ by > 25% (m)=manual int.

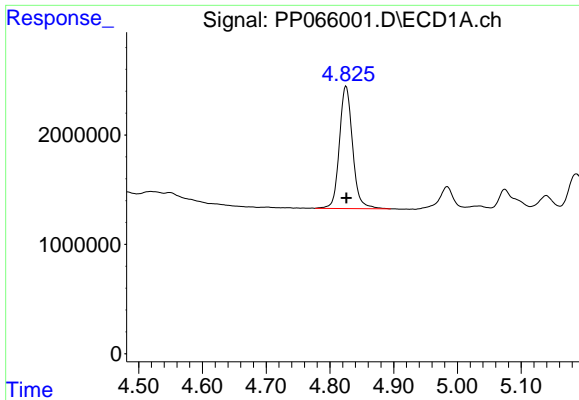
Data Path : Z:\pestpcbsrv\HPCHEM1\ECD\_P\Data\PP062524\  
 Data File : PP066001.D  
 Signal(s) : Signal #1: ECD1A.ch Signal #2: ECD2B.ch  
 Acq On : 25 Jun 2024 11:10  
 Operator : YP\AJ  
 Sample : P3023-13DL 2X  
 Misc :  
 ALS Vial : 11 Sample Multiplier: 1

Instrument :  
 ECD\_P  
 ClientSampleId :  
 S02-04BDL

Integration File signal 1: autoint1.e  
 Integration File signal 2: autoint2.e  
 Quant Time: Jun 25 14:31:01 2024  
 Quant Method : Z:\pestpcbsrv\HPCHEM1\ECD\_P\methods\PP060524.M  
 Quant Title : GC EXTRACTABLES  
 QLast Update : Thu Jun 06 05:25:59 2024  
 Response via : Initial Calibration  
 Integrator: ChemStation

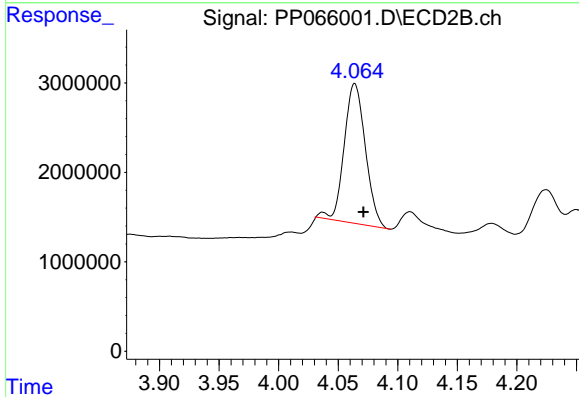
Volume Inj. : 2 µl  
 Signal #1 Phase : ZB-MR1 Signal #2 Phase: ZB-MR2  
 Signal #1 Info : 30Mx0.32mmx 0.50µ Signal #2 Info : 30M x 0.32mm x 0.25µm



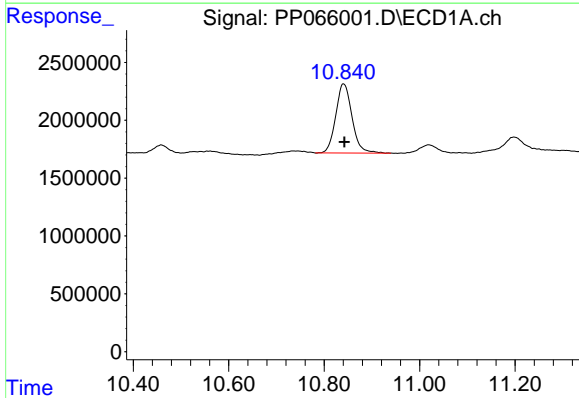


#1 Tetrachloro-m-xylene  
 R.T.: 4.825 min  
 Delta R.T.: 0.000 min  
 Response: 16070901  
 Conc: 8.47 ng/ml

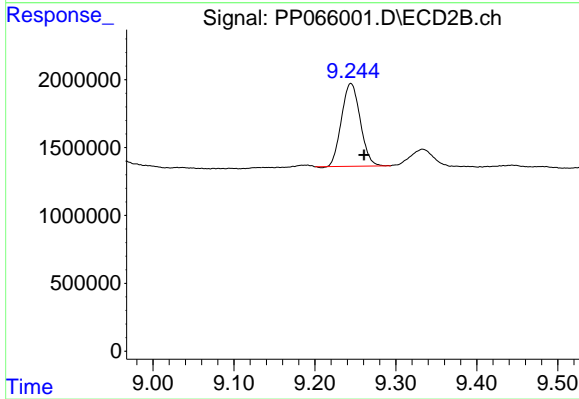
Instrument :  
 ECD\_P  
 ClientSampleId :  
 S02-04BDL



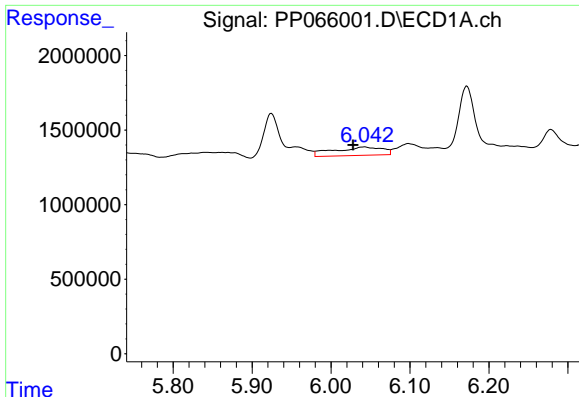
#1 Tetrachloro-m-xylene  
 R.T.: 4.064 min  
 Delta R.T.: -0.007 min  
 Response: 19281015  
 Conc: 6.91 ng/ml



#2 Decachlorobiphenyl  
 R.T.: 10.841 min  
 Delta R.T.: -0.002 min  
 Response: 14163742  
 Conc: 7.20 ng/ml



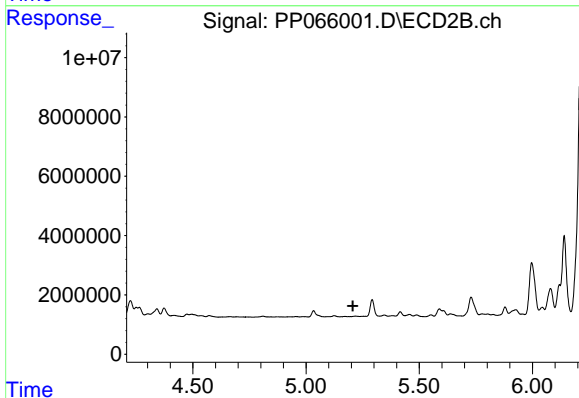
#2 Decachlorobiphenyl  
 R.T.: 9.245 min  
 Delta R.T.: -0.016 min  
 Response: 9805180  
 Conc: 6.66 ng/ml



#4 AR-1016-2

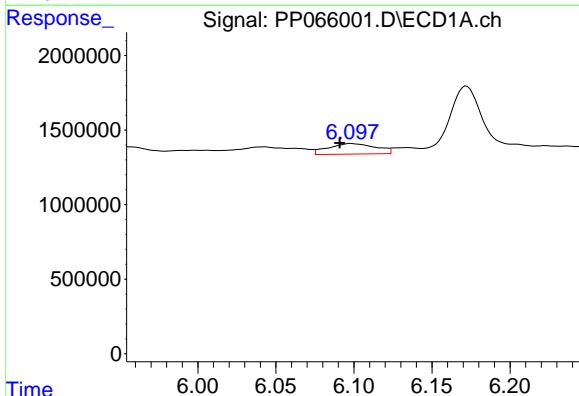
R.T.: 6.042 min  
 Delta R.T.: 0.014 min  
 Response: 2390772  
 Conc: 24.96 ng/ml

Instrument :  
 ECD\_P  
 ClientSampleId :  
 S02-04BDL



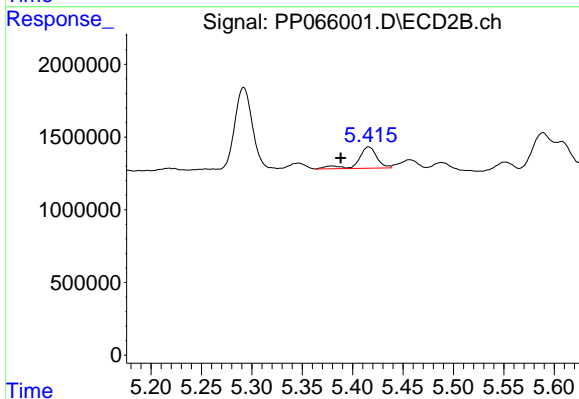
#4 AR-1016-2

R.T.: 0.000 min  
 Exp R.T. : 5.207 min  
 Response: 0  
 Conc: N.D.



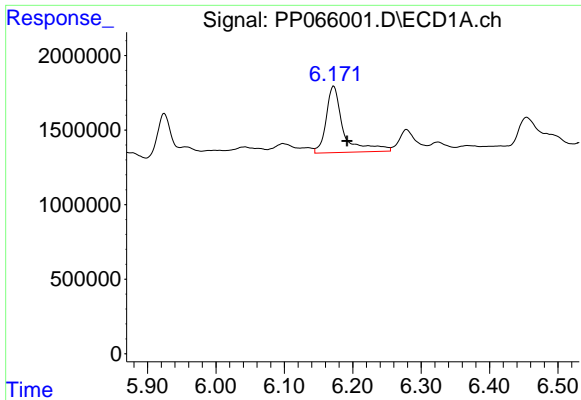
#5 AR-1016-3

R.T.: 6.098 min  
 Delta R.T.: 0.008 min  
 Response: 1492124  
 Conc: 24.39 ng/ml



#5 AR-1016-3

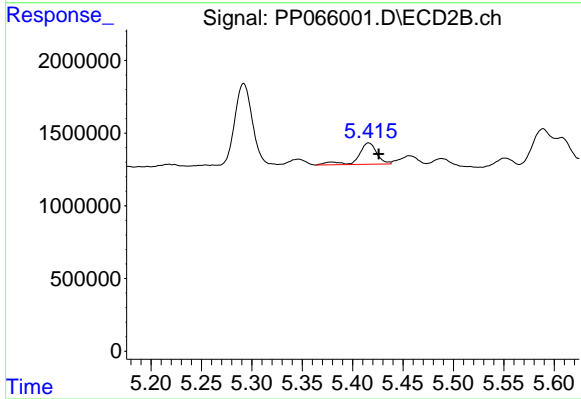
R.T.: 5.416 min  
 Delta R.T.: 0.028 min  
 Response: 1869406  
 Conc: 29.13 ng/ml



#6 AR-1016-4

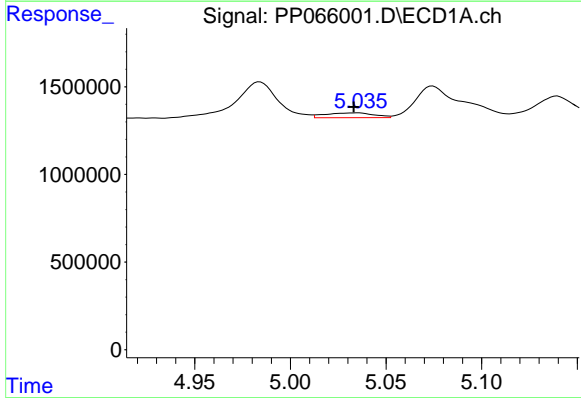
R.T.: 6.172 min  
 Delta R.T.: -0.019 min  
 Response: 7823998  
 Conc: 159.10 ng/ml

Instrument :  
 ECD\_P  
 ClientSampleId :  
 S02-04BDL



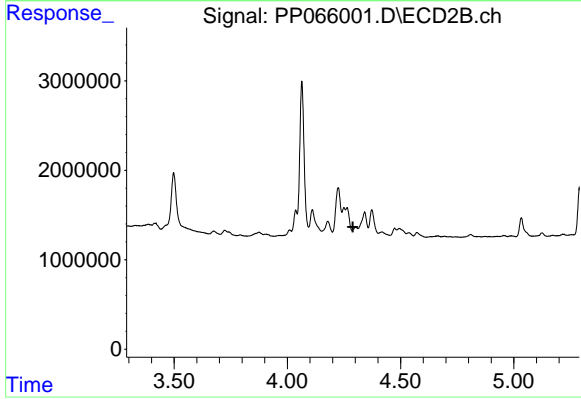
#6 AR-1016-4

R.T.: 5.416 min  
 Delta R.T.: -0.010 min  
 Response: 1869406  
 Conc: 36.23 ng/ml



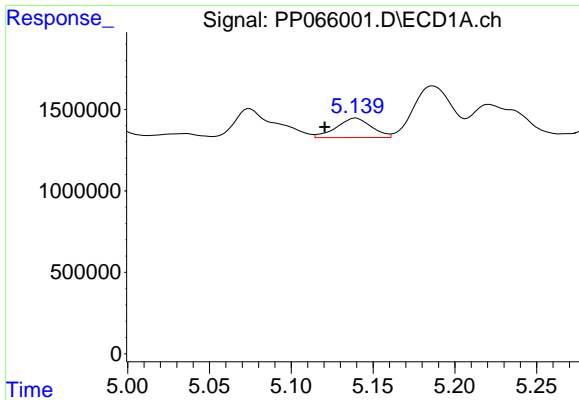
#8 AR-1221-1

R.T.: 5.035 min  
 Delta R.T.: 0.002 min  
 Response: 486027  
 Conc: 19.05 ng/ml



#8 AR-1221-1

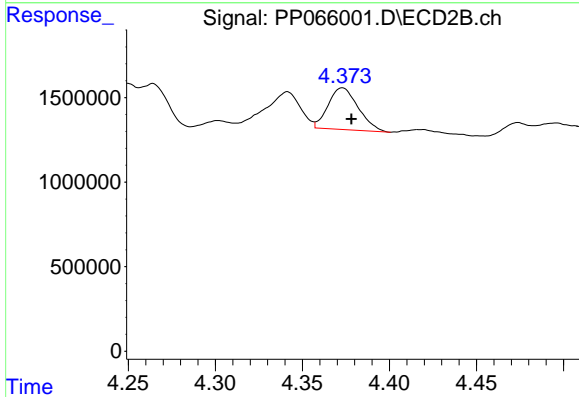
R.T.: 0.000 min  
 Exp R.T. : 4.289 min  
 Response: 0  
 Conc: N.D.



#9 AR-1221-2

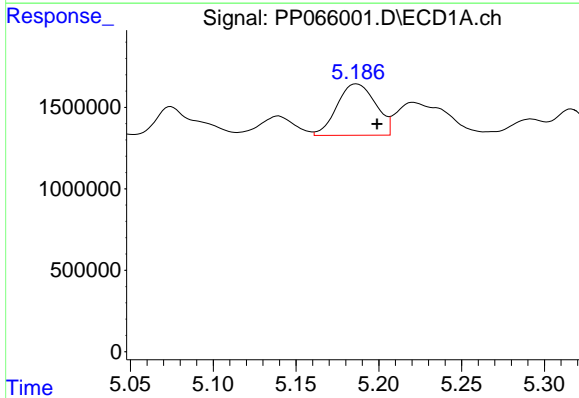
R.T.: 5.139 min  
 Delta R.T.: 0.019 min  
 Response: 1777991  
 Conc: 92.07 ng/ml

Instrument :  
 ECD\_P  
 ClientSampleId :  
 S02-04BDL



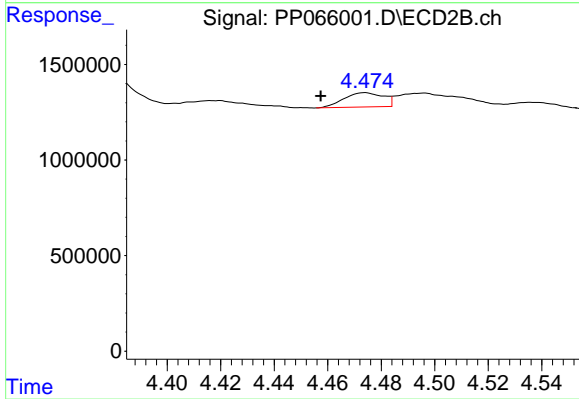
#9 AR-1221-2

R.T.: 4.373 min  
 Delta R.T.: -0.005 min  
 Response: 2959433  
 Conc: 109.63 ng/ml



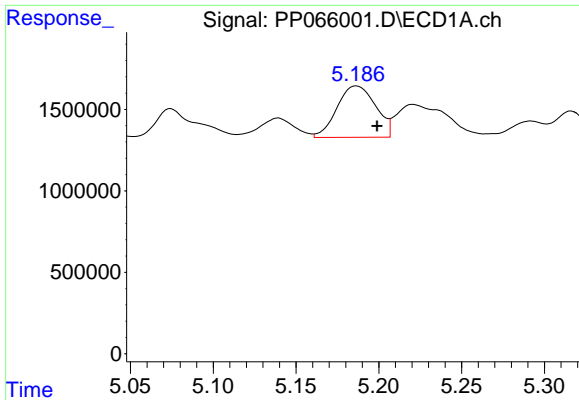
#10 AR-1221-3

R.T.: 5.187 min  
 Delta R.T.: -0.012 min  
 Response: 5114400  
 Conc: 91.01 ng/ml



#10 AR-1221-3

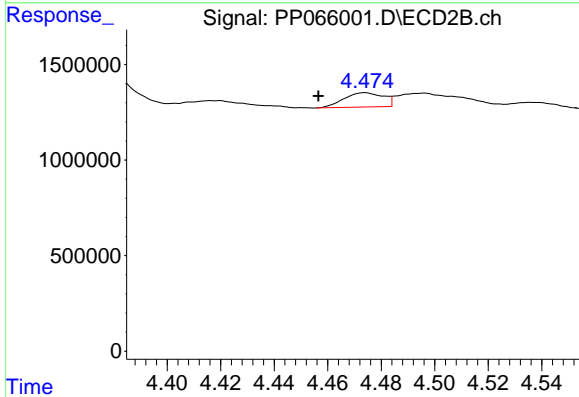
R.T.: 4.474 min  
 Delta R.T.: 0.017 min  
 Response: 766834  
 Conc: 9.89 ng/ml



#11 AR-1232-1

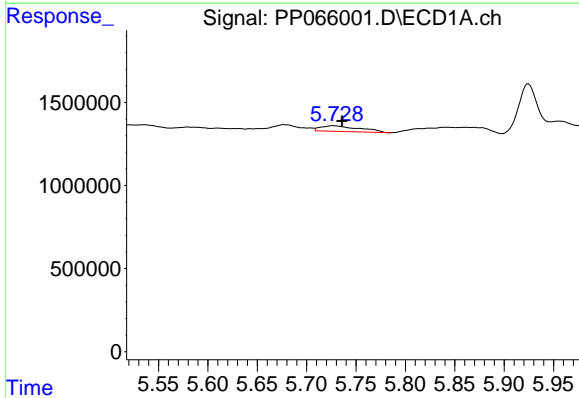
R.T.: 5.187 min  
 Delta R.T.: -0.012 min  
 Response: 5114400  
 Conc: 113.04 ng/ml

Instrument :  
 ECD\_P  
 ClientSampleId :  
 S02-04BDL



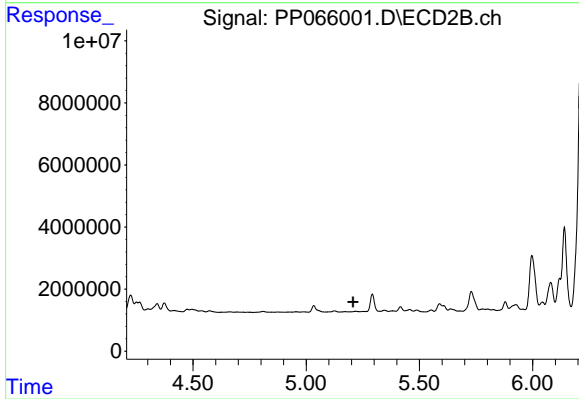
#11 AR-1232-1

R.T.: 4.474 min  
 Delta R.T.: 0.017 min  
 Response: 766834  
 Conc: 12.13 ng/ml



#12 AR-1232-2

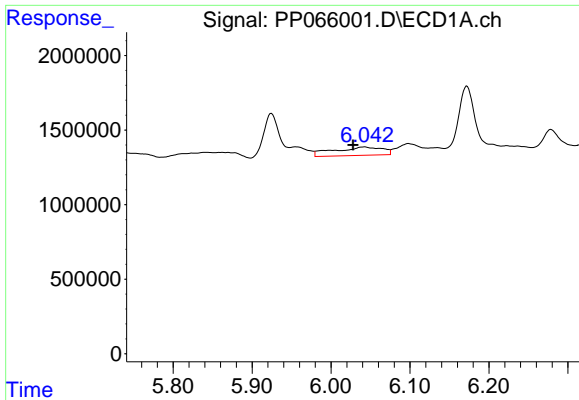
R.T.: 5.727 min  
 Delta R.T.: -0.009 min  
 Response: 919404  
 Conc: 35.30 ng/ml



#12 AR-1232-2

R.T.: 0.000 min  
 Exp R.T. : 5.206 min  
 Response: 0  
 Conc: N.D.

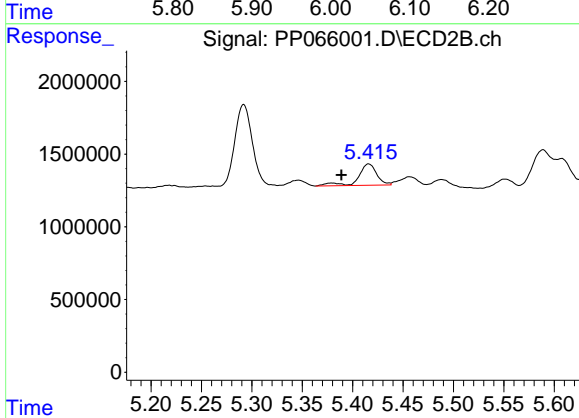




#13 AR-1232-3

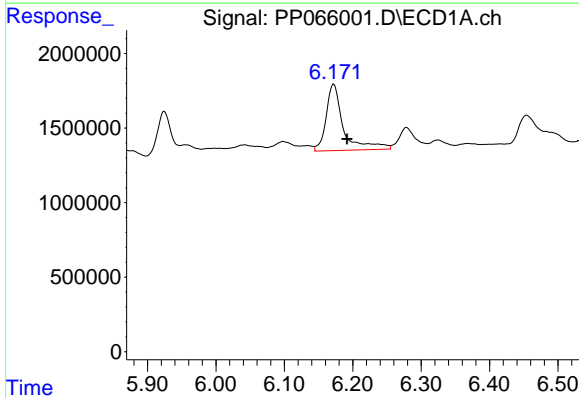
R.T.: 6.042 min  
 Delta R.T.: 0.014 min  
 Response: 2390772  
 Conc: 52.85 ng/ml

Instrument :  
 ECD\_P  
 ClientSampleId :  
 S02-04BDL



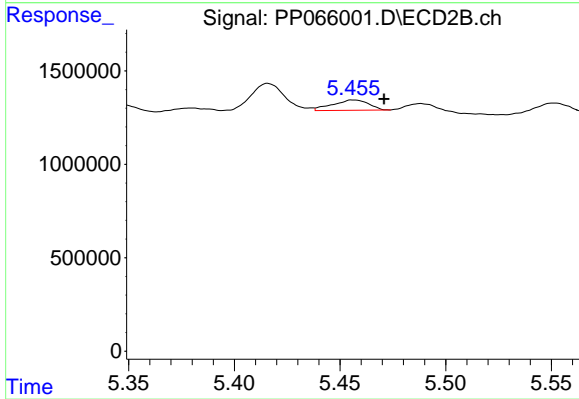
#13 AR-1232-3

R.T.: 5.416 min  
 Delta R.T.: 0.027 min  
 Response: 1869406  
 Conc: 62.07 ng/ml



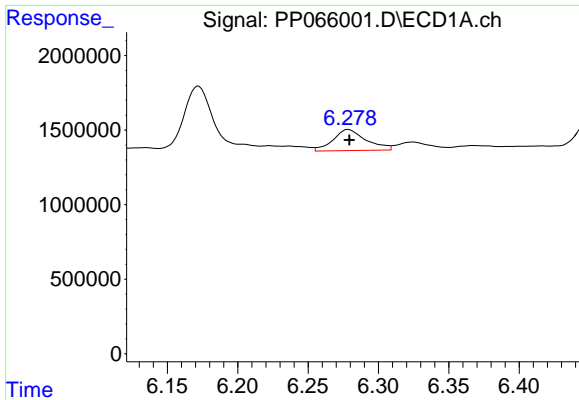
#14 AR-1232-4

R.T.: 6.172 min  
 Delta R.T.: -0.020 min  
 Response: 7823998  
 Conc: 334.96 ng/ml



#14 AR-1232-4

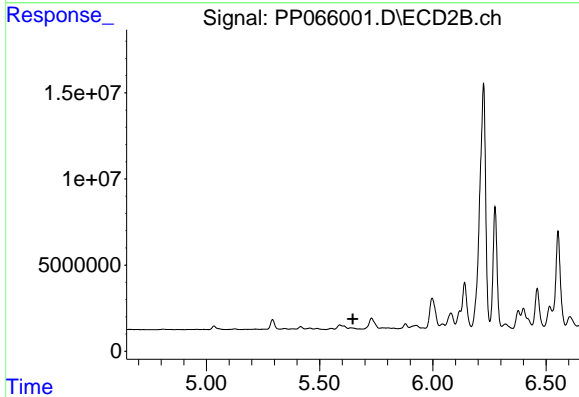
R.T.: 5.456 min  
 Delta R.T.: -0.014 min  
 Response: 653602  
 Conc: 23.89 ng/ml



#15 AR-1232-5

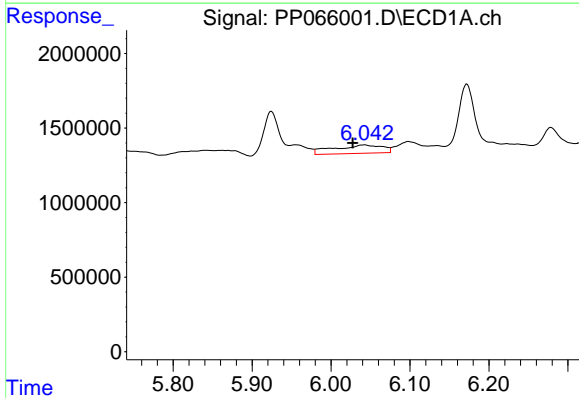
R.T.: 6.279 min  
 Delta R.T.: 0.000 min  
 Response: 2305495  
 Conc: 117.43 ng/ml

Instrument :  
 ECD\_P  
 ClientSampleId :  
 S02-04BDL



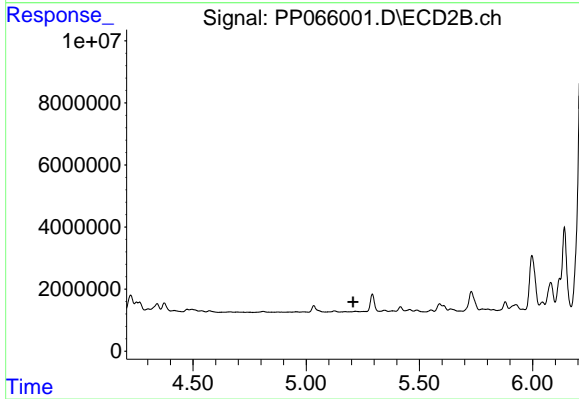
#15 AR-1232-5

R.T.: 0.000 min  
 Exp R.T. : 5.647 min  
 Response: 0  
 Conc: N.D.



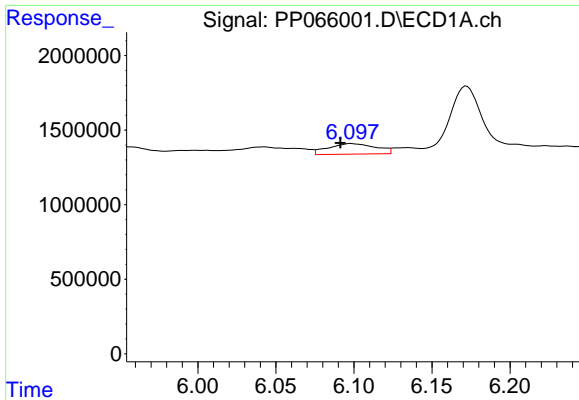
#17 AR-1242-2

R.T.: 6.042 min  
 Delta R.T.: 0.014 min  
 Response: 2390772  
 Conc: 30.15 ng/ml



#17 AR-1242-2

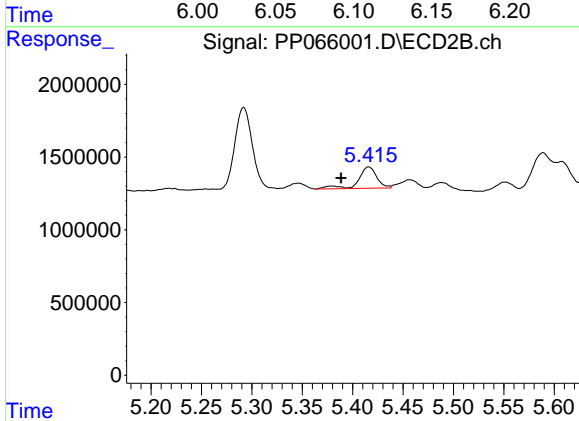
R.T.: 0.000 min  
 Exp R.T. : 5.206 min  
 Response: 0  
 Conc: N.D.



#18 AR-1242-3

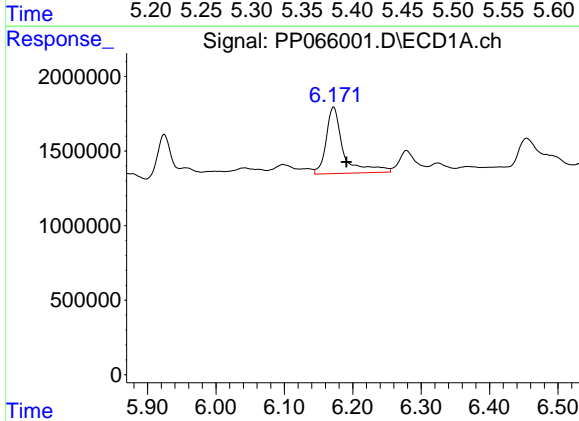
R.T.: 6.098 min  
 Delta R.T.: 0.007 min  
 Response: 1492124  
 Conc: 29.52 ng/ml

Instrument :  
 ECD\_P  
 ClientSampleId :  
 S02-04BDL



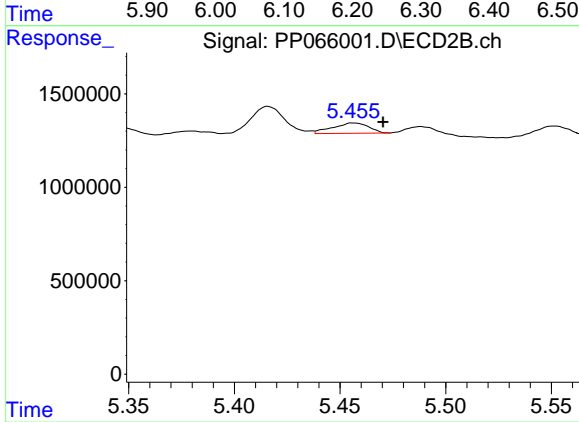
#18 AR-1242-3

R.T.: 5.416 min  
 Delta R.T.: 0.027 min  
 Response: 1869406  
 Conc: 34.75 ng/ml



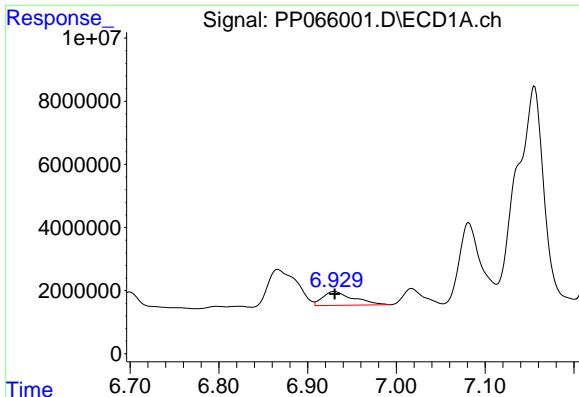
#19 AR-1242-4

R.T.: 6.172 min  
 Delta R.T.: -0.019 min  
 Response: 7823998  
 Conc: 190.66 ng/ml



#19 AR-1242-4

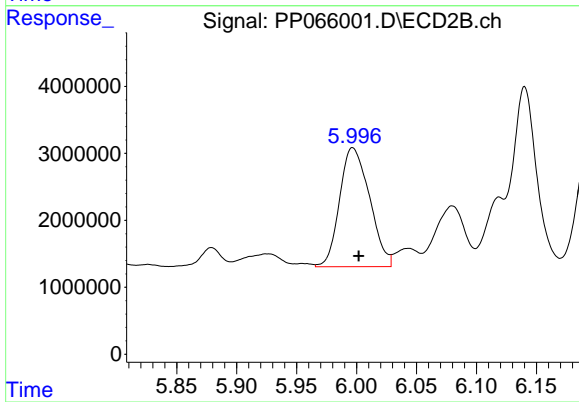
R.T.: 5.456 min  
 Delta R.T.: -0.014 min  
 Response: 653602  
 Conc: 12.27 ng/ml



#20 AR-1242-5

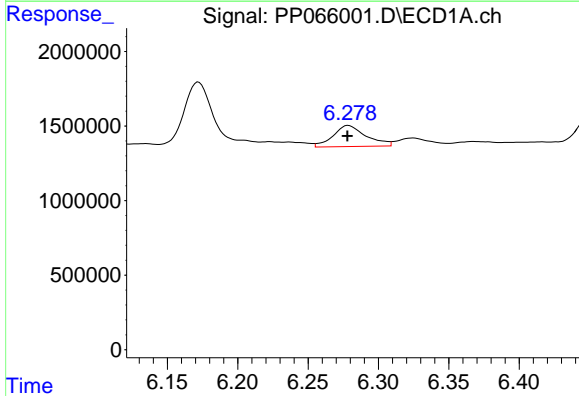
R.T.: 6.930 min  
 Delta R.T.: 0.000 min  
 Response: 10550887  
 Conc: 241.87 ng/ml

Instrument :  
 ECD\_P  
 ClientSampleId :  
 S02-04BDL



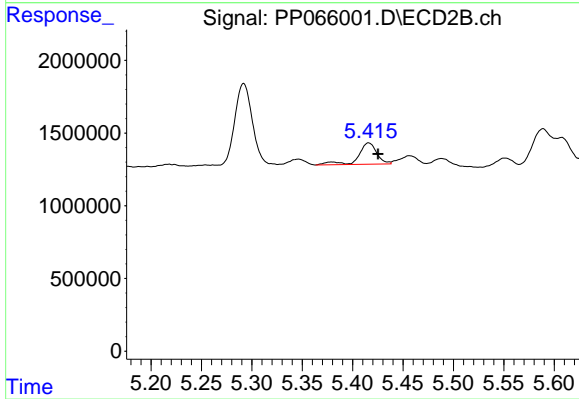
#20 AR-1242-5

R.T.: 5.997 min  
 Delta R.T.: -0.005 min  
 Response: 30922237  
 Conc: 520.42 ng/ml



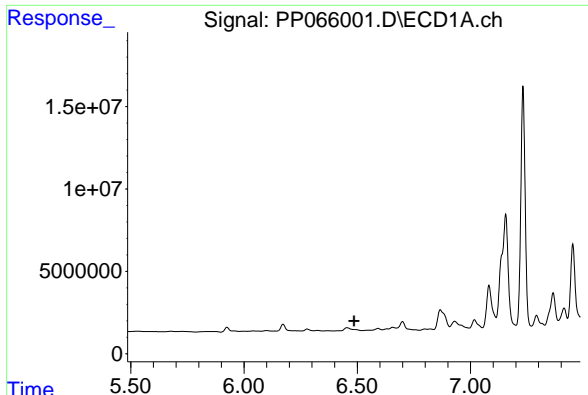
#22 AR-1248-2

R.T.: 6.279 min  
 Delta R.T.: 0.000 min  
 Response: 2305495  
 Conc: 36.99 ng/ml



#22 AR-1248-2

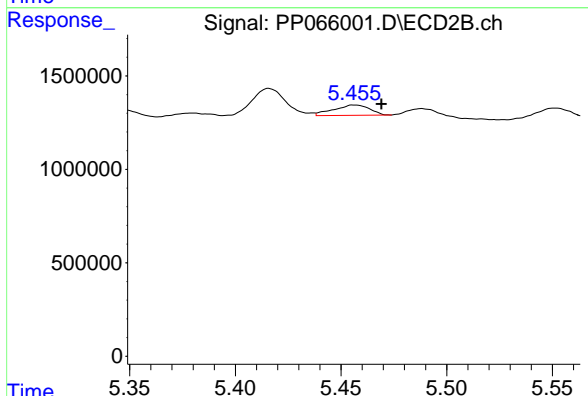
R.T.: 5.416 min  
 Delta R.T.: -0.009 min  
 Response: 1869406  
 Conc: 25.40 ng/ml



#23 AR-1248-3

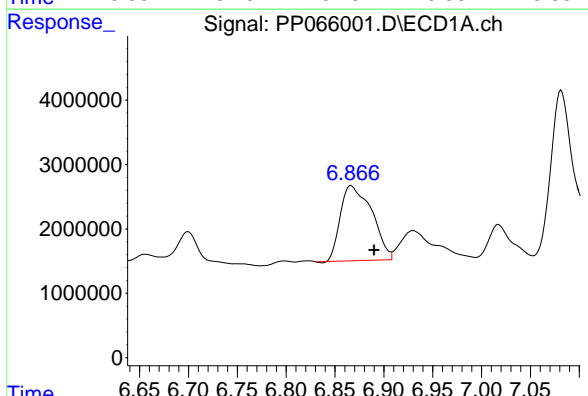
R.T.: 0.000 min  
 Exp R.T.: 6.486 min  
 Response: 0  
 Conc: N.D.

Instrument :  
 ECD\_P  
 ClientSampleId :  
 S02-04BDL



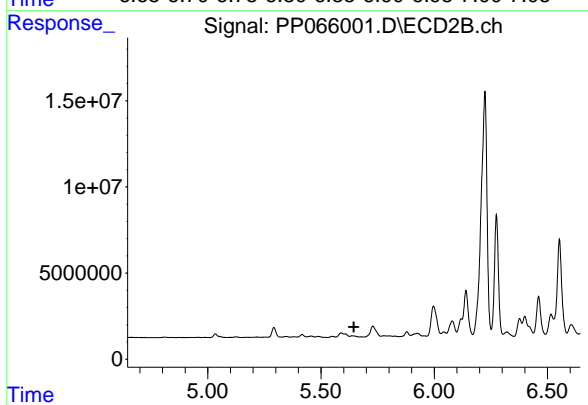
#23 AR-1248-3

R.T.: 5.456 min  
 Delta R.T.: -0.013 min  
 Response: 653602  
 Conc: 8.55 ng/ml



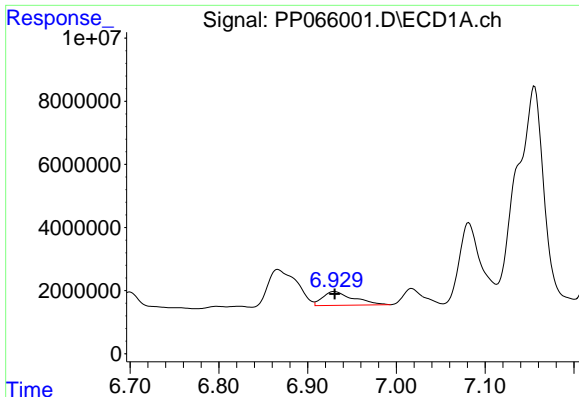
#24 AR-1248-4

R.T.: 6.867 min  
 Delta R.T.: -0.023 min  
 Response: 26027987  
 Conc: 365.59 ng/ml



#24 AR-1248-4

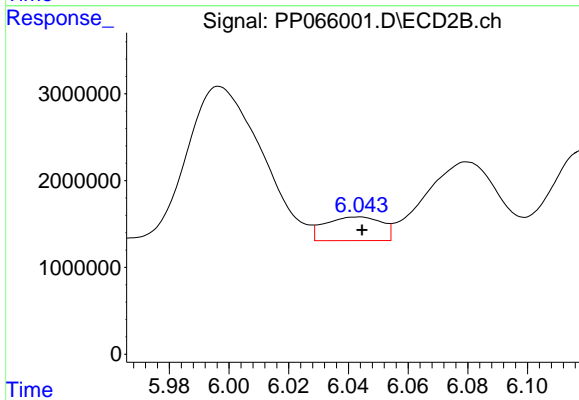
R.T.: 0.000 min  
 Exp R.T.: 5.645 min  
 Response: 0  
 Conc: N.D.



#25 AR-1248-5

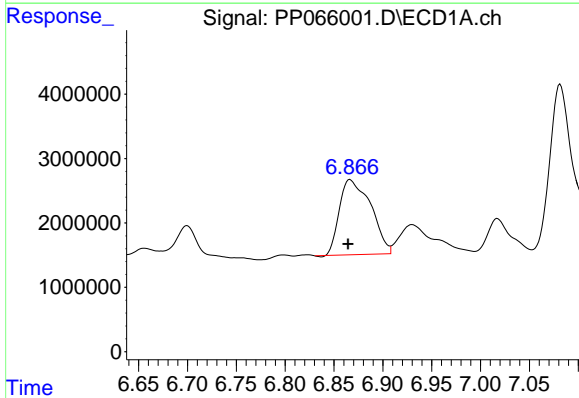
R.T.: 6.930 min  
 Delta R.T.: 0.000 min  
 Response: 10550887  
 Conc: 152.20 ng/ml

Instrument :  
 ECD\_P  
 ClientSampleId :  
 S02-04BDL



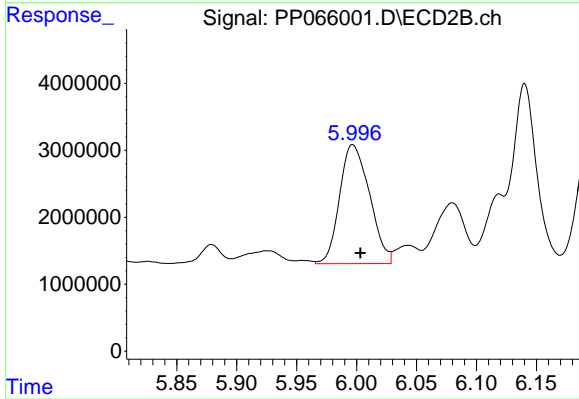
#25 AR-1248-5

R.T.: 6.043 min  
 Delta R.T.: -0.001 min  
 Response: 3585585  
 Conc: 44.94 ng/ml



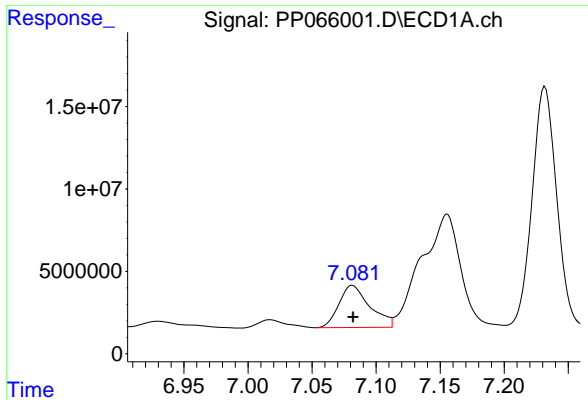
#26 AR-1254-1

R.T.: 6.867 min  
 Delta R.T.: 0.002 min  
 Response: 26027987  
 Conc: 332.25 ng/ml



#26 AR-1254-1

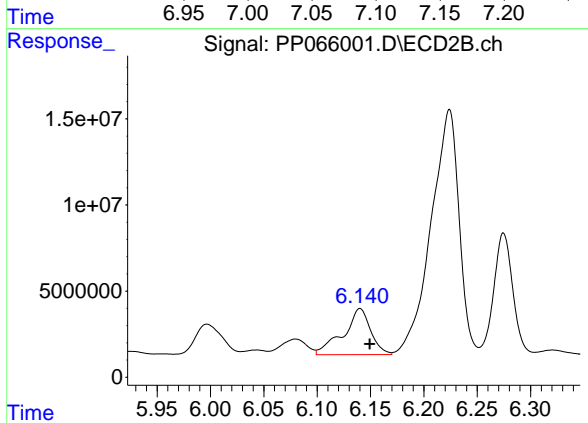
R.T.: 5.997 min  
 Delta R.T.: -0.007 min  
 Response: 30922237  
 Conc: 250.96 ng/ml



#27 AR-1254-2

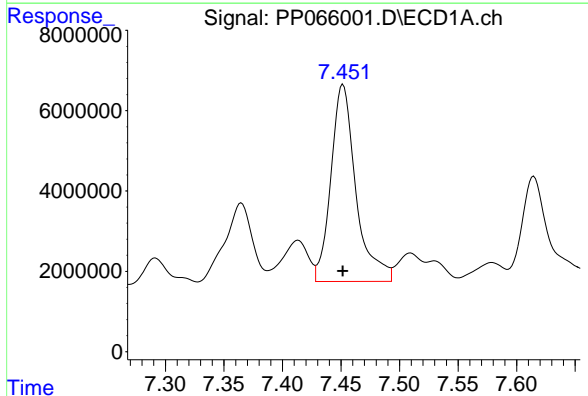
R.T.: 7.082 min  
 Delta R.T.: 0.000 min  
 Response: 42802618  
 Conc: 362.33 ng/ml

Instrument :  
 ECD\_P  
 ClientSampleId :  
 S02-04BDL



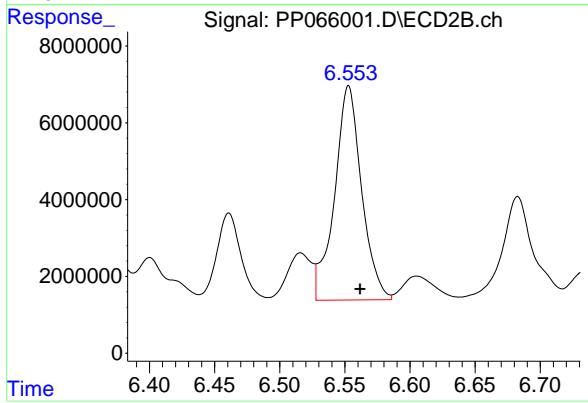
#27 AR-1254-2

R.T.: 6.140 min  
 Delta R.T.: -0.009 min  
 Response: 47726018  
 Conc: 453.27 ng/ml



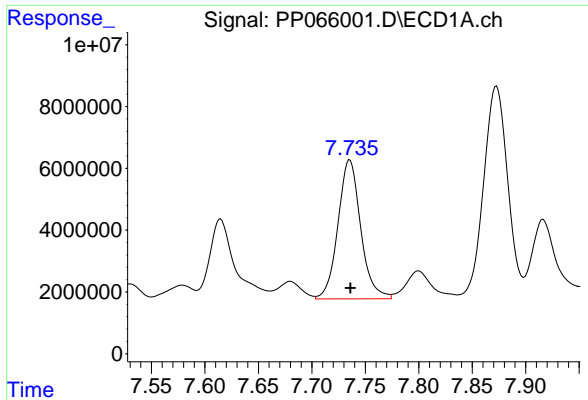
#28 AR-1254-3

R.T.: 7.452 min  
 Delta R.T.: 0.000 min  
 Response: 72981377  
 Conc: 598.05 ng/ml



#28 AR-1254-3

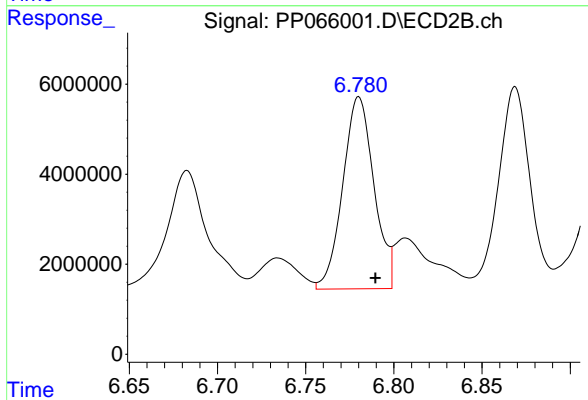
R.T.: 6.553 min  
 Delta R.T.: -0.009 min  
 Response: 80835736  
 Conc: 510.83 ng/ml



#29 AR-1254-4

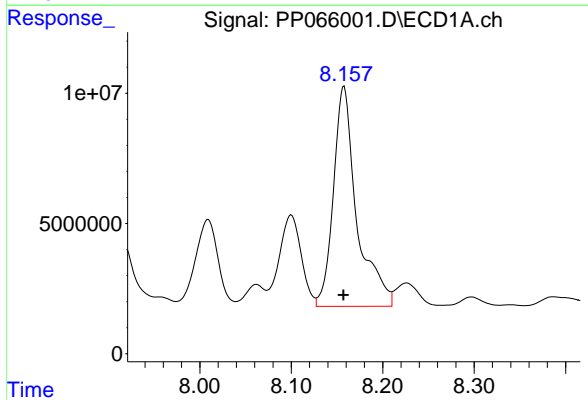
R.T.: 7.736 min  
 Delta R.T.: 0.000 min  
 Response: 66619321  
 Conc: 749.15 ng/ml

Instrument :  
 ECD\_P  
 ClientSampleId :  
 S02-04BDL



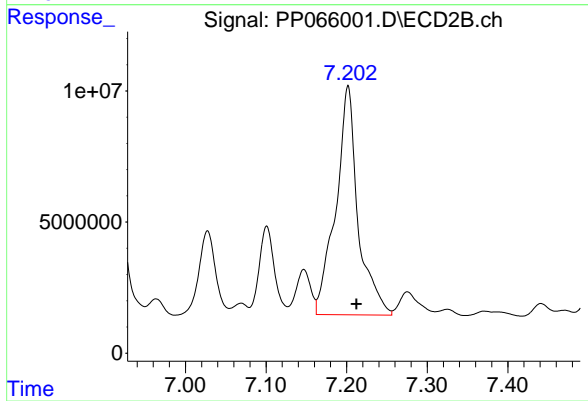
#29 AR-1254-4

R.T.: 6.780 min  
 Delta R.T.: -0.009 min  
 Response: 52565866  
 Conc: 569.28 ng/ml



#30 AR-1254-5

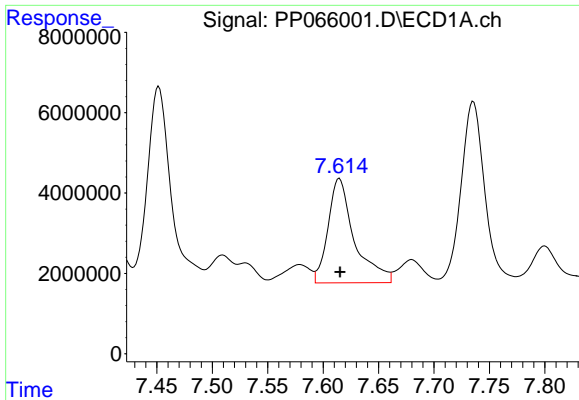
R.T.: 8.158 min  
 Delta R.T.: 0.000 min  
 Response: 149822046  
 Conc: 1529.45 ng/ml



#30 AR-1254-5

R.T.: 7.202 min  
 Delta R.T.: -0.010 min  
 Response: 167826481  
 Conc: 1311.24 ng/ml



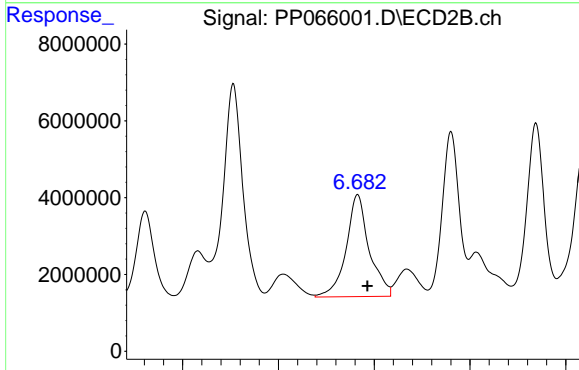


#31 AR-1260-1

R.T.: 7.615 min  
 Delta R.T.: 0.000 min  
 Response: 43018834  
 Conc: 444.15 ng/ml

Instrument :  
 ECD\_P  
 ClientSampleId :  
 S02-04BDL

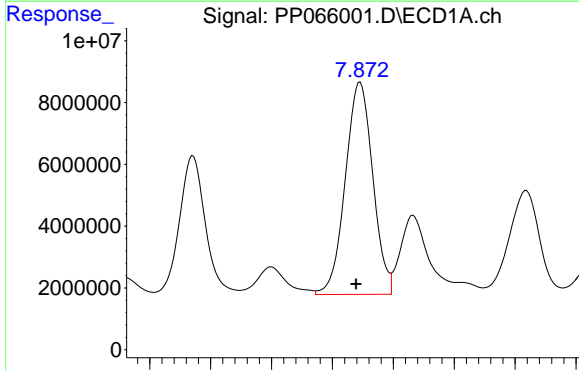
Time 7.45 7.50 7.55 7.60 7.65 7.70 7.75 7.80



#31 AR-1260-1

R.T.: 6.683 min  
 Delta R.T.: -0.010 min  
 Response: 44369503  
 Conc: 418.11 ng/ml

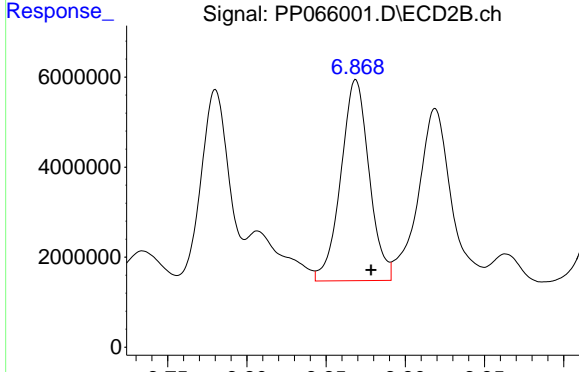
Time 6.50 6.60 6.70 6.80



#32 AR-1260-2

R.T.: 7.873 min  
 Delta R.T.: 0.003 min  
 Response: 107751363  
 Conc: 961.04 ng/ml

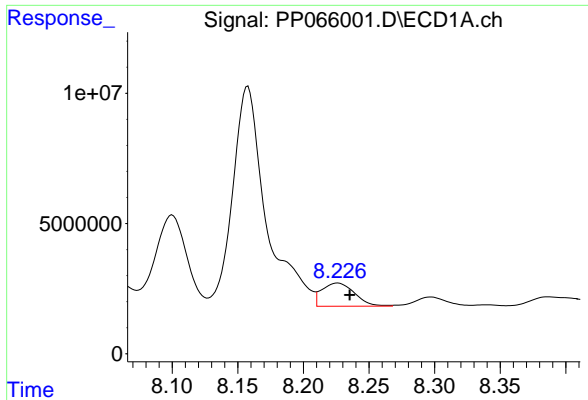
Time 7.70 7.75 7.80 7.85 7.90 7.95 8.00



#32 AR-1260-2

R.T.: 6.869 min  
 Delta R.T.: -0.010 min  
 Response: 55456119  
 Conc: 449.67 ng/ml

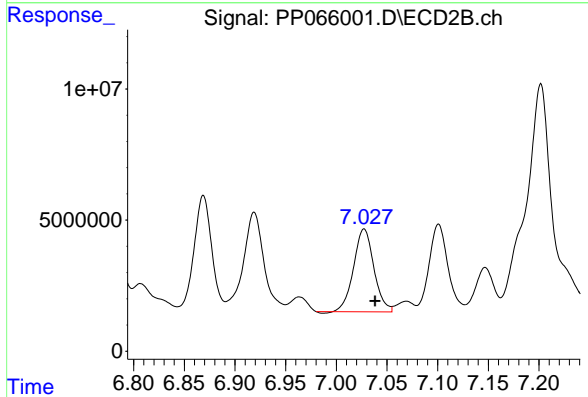
Time 6.75 6.80 6.85 6.90 6.95



#33 AR-1260-3

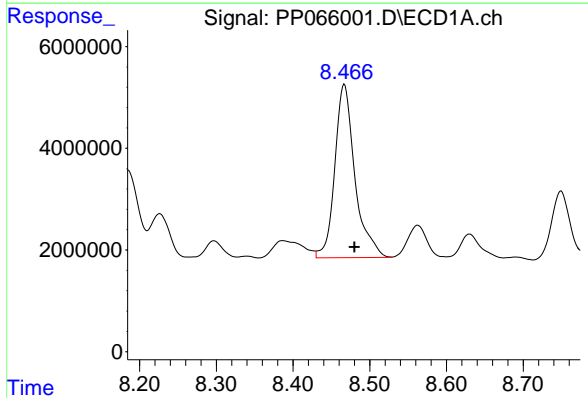
R.T.: 8.226 min  
 Delta R.T.: -0.009 min  
 Response: 15434298  
 Conc: 176.78 ng/ml

Instrument :  
 ECD\_P  
 ClientSampleId :  
 S02-04BDL



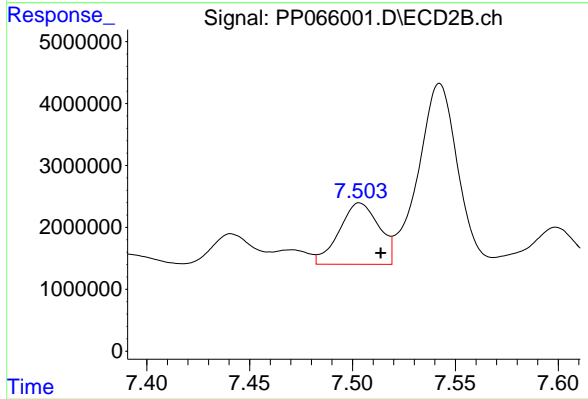
#33 AR-1260-3

R.T.: 7.027 min  
 Delta R.T.: -0.011 min  
 Response: 43954330  
 Conc: 379.00 ng/ml



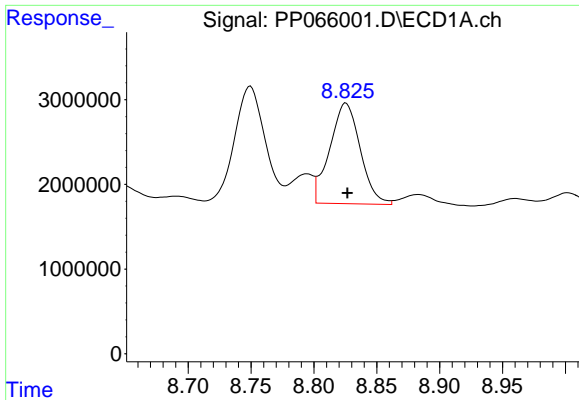
#34 AR-1260-4

R.T.: 8.467 min  
 Delta R.T.: -0.013 min  
 Response: 62096466  
 Conc: 619.66 ng/ml



#34 AR-1260-4

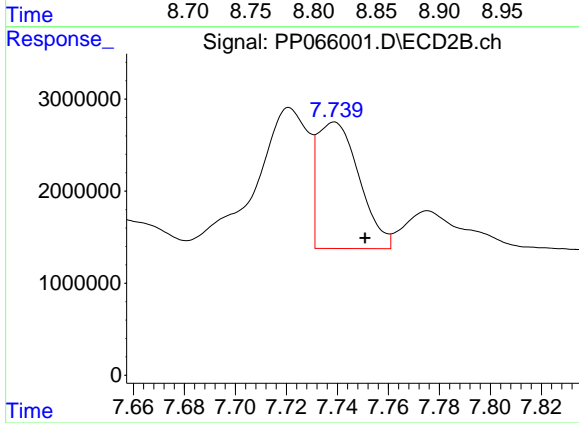
R.T.: 7.504 min  
 Delta R.T.: -0.010 min  
 Response: 13371676  
 Conc: 151.82 ng/ml



#35 AR-1260-5

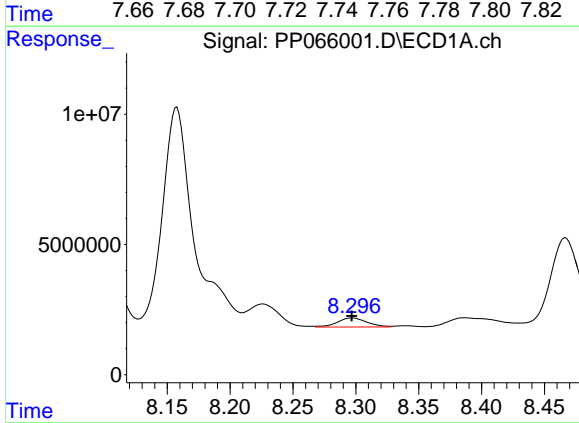
R.T.: 8.826 min  
 Delta R.T.: 0.000 min  
 Response: 20061935  
 Conc: 106.38 ng/ml

Instrument :  
 ECD\_P  
 ClientSampleId :  
 S02-04BDL



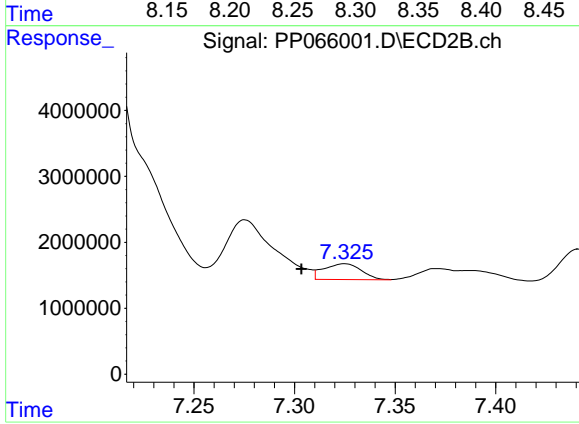
#35 AR-1260-5

R.T.: 7.739 min  
 Delta R.T.: -0.012 min  
 Response: 15671779  
 Conc: 81.87 ng/ml



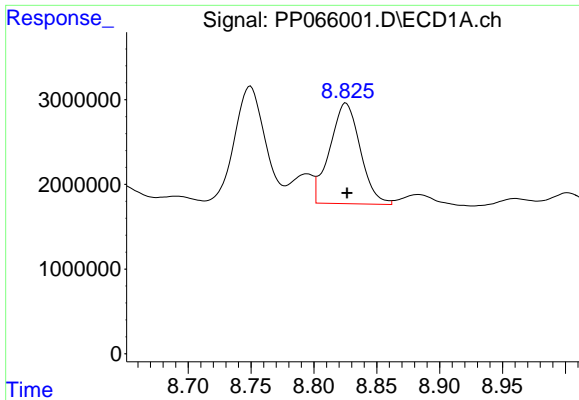
#36 AR-1262-1

R.T.: 8.297 min  
 Delta R.T.: 0.000 min  
 Response: 5631083  
 Conc: 105.10 ng/ml



#36 AR-1262-1

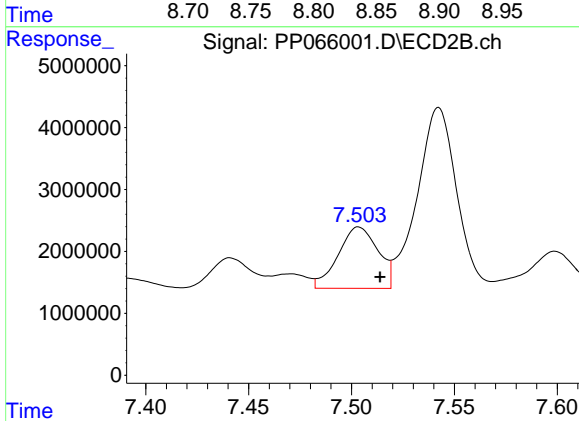
R.T.: 7.325 min  
 Delta R.T.: 0.022 min  
 Response: 3129760  
 Conc: 56.27 ng/ml



#37 AR-1262-2

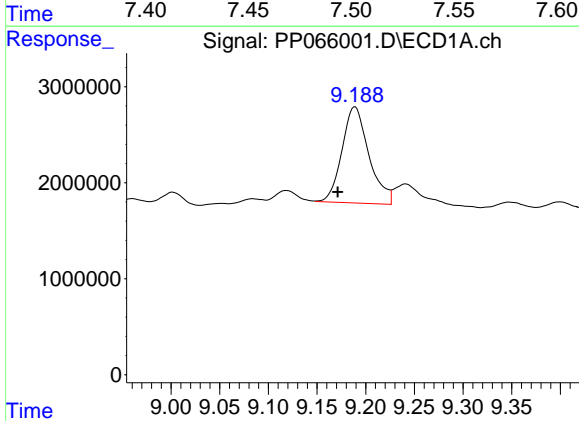
R.T.: 8.826 min  
 Delta R.T.: 0.000 min  
 Response: 20061935  
 Conc: 94.57 ng/ml

Instrument :  
 ECD\_P  
 ClientSampleId :  
 S02-04BDL



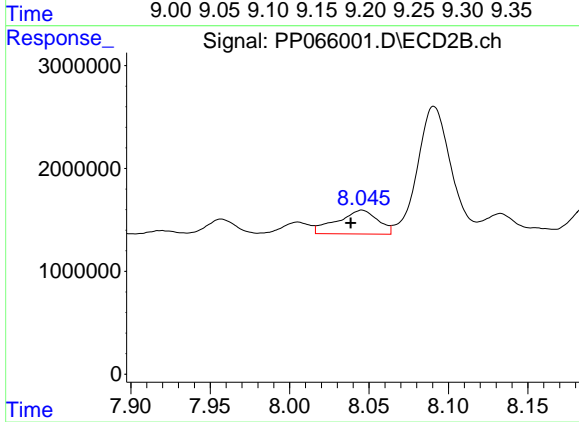
#37 AR-1262-2

R.T.: 7.504 min  
 Delta R.T.: -0.010 min  
 Response: 13371676  
 Conc: 120.00 ng/ml



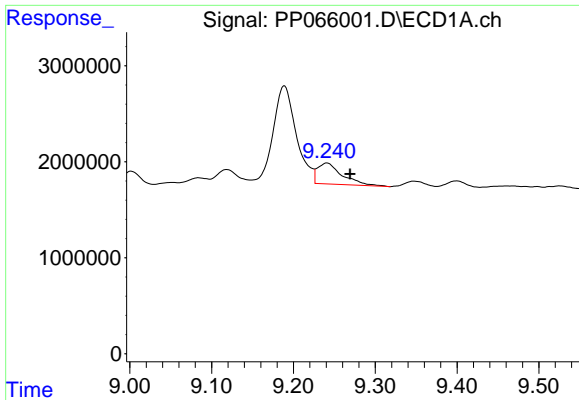
#38 AR-1262-3

R.T.: 9.189 min  
 Delta R.T.: 0.018 min  
 Response: 19307989  
 Conc: 126.12 ng/ml



#38 AR-1262-3

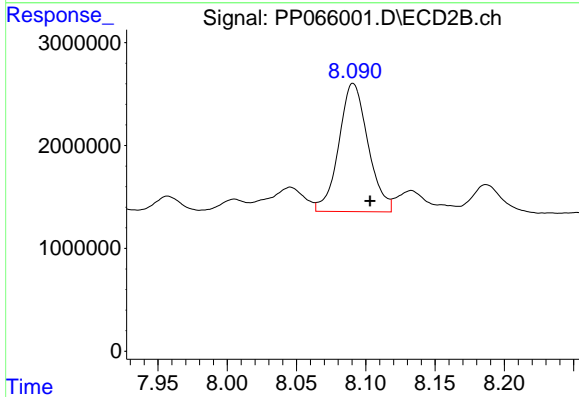
R.T.: 8.046 min  
 Delta R.T.: 0.007 min  
 Response: 4135345  
 Conc: 48.68 ng/ml



#39 AR-1262-4

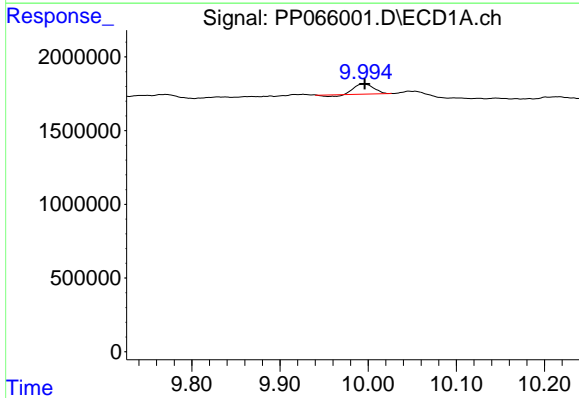
R.T.: 9.241 min  
 Delta R.T.: -0.028 min  
 Response: 4591620  
 Conc: 37.90 ng/ml

Instrument :  
 ECD\_P  
 ClientSampleId :  
 S02-04BDL



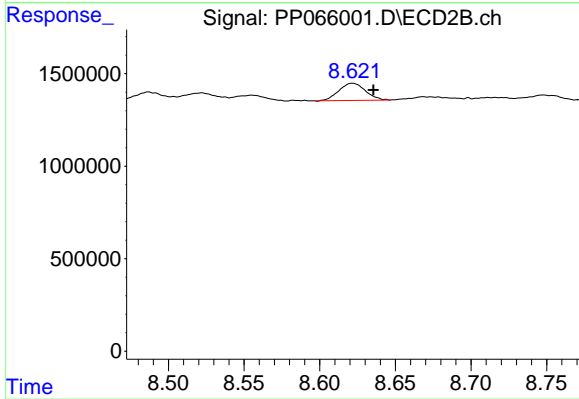
#39 AR-1262-4

R.T.: 8.091 min  
 Delta R.T.: -0.012 min  
 Response: 18289939  
 Conc: 119.14 ng/ml



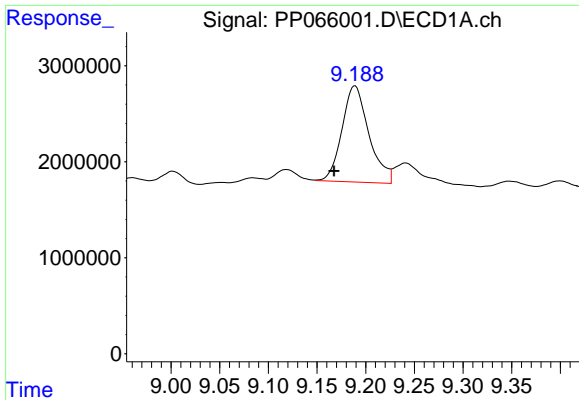
#40 AR-1262-5

R.T.: 9.995 min  
 Delta R.T.: 0.000 min  
 Response: 960905  
 Conc: 11.83 ng/ml



#40 AR-1262-5

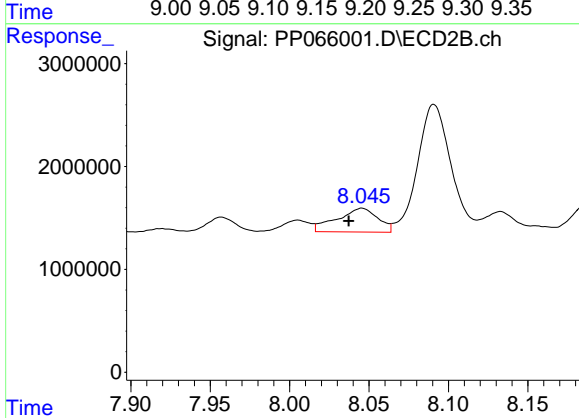
R.T.: 8.622 min  
 Delta R.T.: -0.014 min  
 Response: 1139300  
 Conc: 16.22 ng/ml



#41 AR-1268-1

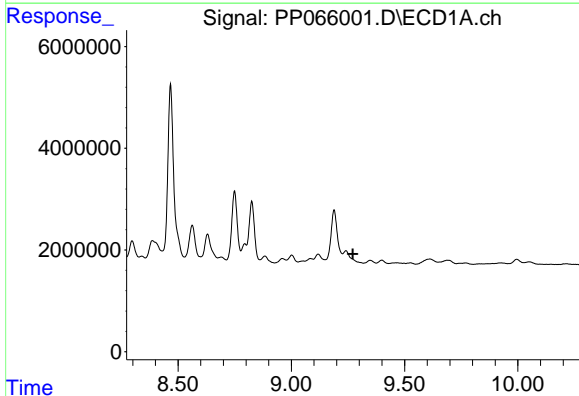
R.T.: 9.189 min  
 Delta R.T.: 0.021 min  
 Response: 19307989  
 Conc: 76.02 ng/ml

Instrument :  
 ECD\_P  
 ClientSampleId :  
 S02-04BDL



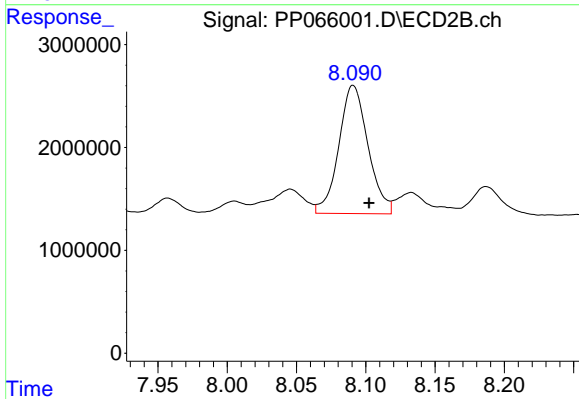
#41 AR-1268-1

R.T.: 8.046 min  
 Delta R.T.: 0.008 min  
 Response: 4135345  
 Conc: 17.87 ng/ml



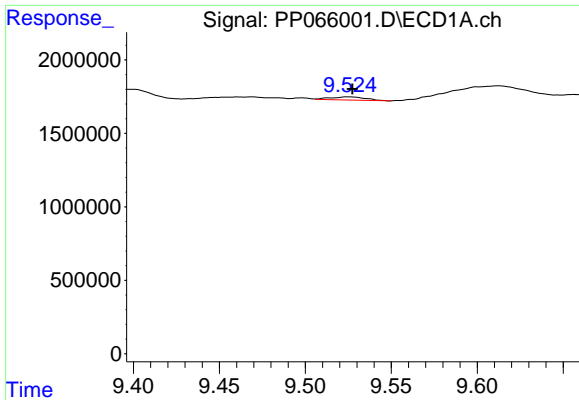
#42 AR-1268-2

R.T.: 0.000 min  
 Exp R.T. : 9.272 min  
 Response: 0  
 Conc: N.D.



#42 AR-1268-2

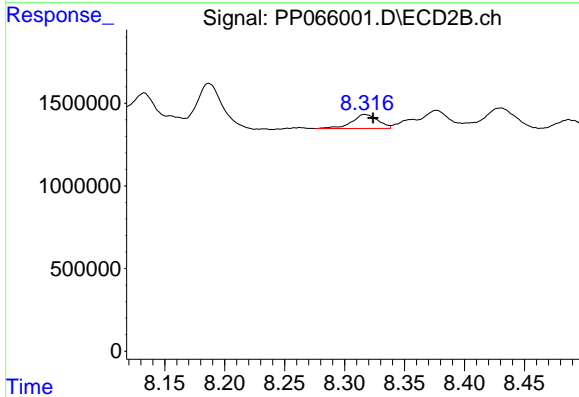
R.T.: 8.091 min  
 Delta R.T.: -0.011 min  
 Response: 18289939  
 Conc: 87.15 ng/ml



#43 AR-1268-3

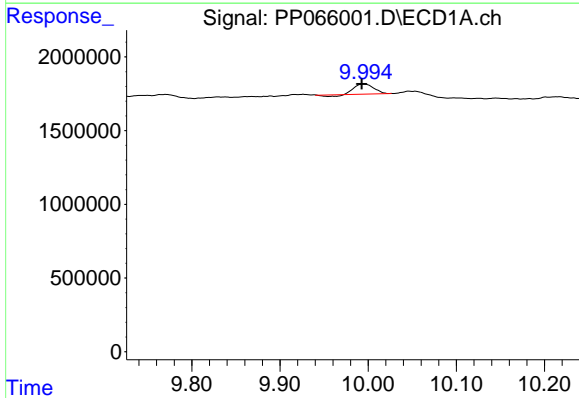
R.T.: 9.526 min  
 Delta R.T.: -0.002 min  
 Response: 308126  
 Conc: 1.52 ng/ml

Instrument :  
 ECD\_P  
 ClientSampleId :  
 S02-04BDL



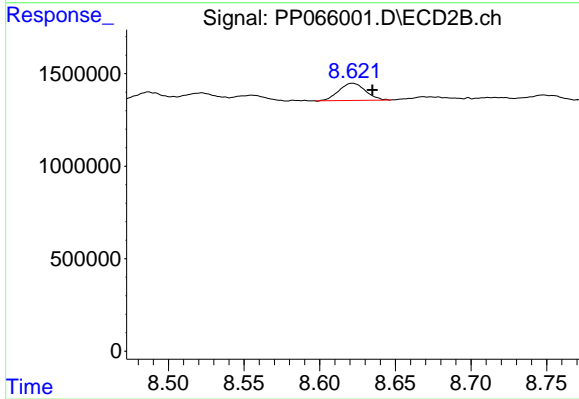
#43 AR-1268-3

R.T.: 8.317 min  
 Delta R.T.: -0.007 min  
 Response: 1280672  
 Conc: 7.33 ng/ml



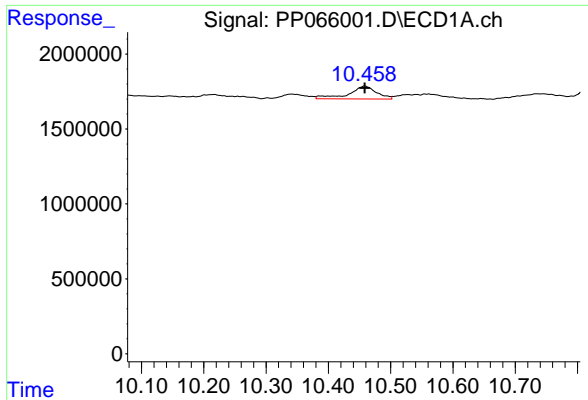
#44 AR-1268-4

R.T.: 9.995 min  
 Delta R.T.: 0.002 min  
 Response: 960905  
 Conc: 11.53 ng/ml



#44 AR-1268-4

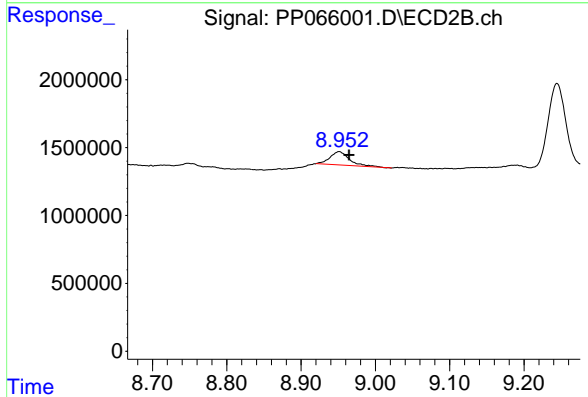
R.T.: 8.622 min  
 Delta R.T.: -0.013 min  
 Response: 1139300  
 Conc: 15.03 ng/ml



#45 AR-1268-5

R.T.: 10.459 min  
Delta R.T.: 0.000 min  
Response: 2679485  
Conc: 4.03 ng/ml

Instrument :  
ECD\_P  
ClientSampleId :  
S02-04BDL



#45 AR-1268-5

R.T.: 8.951 min  
Delta R.T.: -0.013 min  
Response: 1816008  
Conc: 3.47 ng/ml