

Data Path : Z:\pestpcbsrv\HPCHEM1\ECD_P\Data\PP062524\
 Data File : PP066006.D
 Signal(s) : Signal #1: ECD1A.ch Signal #2: ECD2B.ch
 Acq On : 25 Jun 2024 12:57
 Operator : YP\AJ
 Sample : AR1660CCC500
 Misc :
 ALS Vial : 3 Sample Multiplier: 1

Instrument :
 ECD_P
 ClientSampleId :
 AR1660CCC500

Integration File signal 1: autoint1.e
 Integration File signal 2: autoint2.e
 Quant Time: Jun 25 14:33:58 2024
 Quant Method : Z:\pestpcbsrv\HPCHEM1\ECD_P\methods\PP060524.M
 Quant Title : GC EXTRACTABLES
 QLast Update : Thu Jun 06 05:25:59 2024
 Response via : Initial Calibration
 Integrator: ChemStation

Volume Inj. : 2 µl
 Signal #1 Phase : ZB-MR1 Signal #2 Phase: ZB-MR2
 Signal #1 Info : 30Mx0.32mmx 0.50µ Signal #2 Info : 30M x 0.32mm x 0.25µm

Compound	RT#1	RT#2	Resp#1	Resp#2	ng/ml	ng/ml
System Monitoring Compounds						
1) SA Tetrachlo...	4.826	4.063	96013229	136.0E6	50.615	48.691
2) SA Decachlor...	10.842	9.244	104.9E6	75306910	53.352	51.118
Target Compounds						
3) L1 AR-1016-1	6.005	5.176	33024495	38823013	507.958	455.222
4) L1 AR-1016-2	6.028	5.197	48440097	54766190	505.775	463.862
5) L1 AR-1016-3	6.092	5.378	30605243	28450070	500.213	443.310
6) L1 AR-1016-4	6.191	5.416	25337335	23448540	515.216	454.394
7) L1 AR-1016-5	6.486	5.636	26299893	29865231	524.684	452.740
8) L2 AR-1221-1	5.029	4.278	3696886	4957128	144.866	142.472
9) L2 AR-1221-2	5.120	4.369	5133352	7658138	265.810	283.693
10) L2 AR-1221-3	5.198	4.447	18576328	25299206	330.574	326.223
11) L3 AR-1232-1	5.198	4.447	18576328	25299206	410.570	400.235
12) L3 AR-1232-2	5.736	5.197	26161566	54766190	1004.501	981.624
13) L3 AR-1232-3	6.028	5.378	48440097	28450070	1070.797	944.635
14) L3 AR-1232-4	6.191	5.460	25337335	28533705	1084.733	1042.896
15) L3 AR-1232-5	6.279	5.636	23915668	29865231	1218.191	1021.397
16) L4 AR-1242-1	6.005	5.176	33024495	38823013	603.926	540.256
17) L4 AR-1242-2	6.028	5.197	48440097	54766190	610.836	550.709
18) L4 AR-1242-3	6.092	5.378	30605243	28450070	605.466	528.921
19) L4 AR-1242-4	6.191	5.460	25337335	28533705	617.450	535.742
20) L4 AR-1242-5	6.931	5.993	8516775	27428491	195.241	461.617 #
21) L5 AR-1248-1	6.005	5.176	33024495	38823013	812.025	727.376
22) L5 AR-1248-2	6.279	5.416	23915668	23448540	383.736	318.574
23) L5 AR-1248-3	6.486	5.460	26299893	28533705	390.554	373.391
24) L5 AR-1248-4	6.890	5.636	8370193	29865231	117.567	339.707 #
25) L5 AR-1248-5	6.931	6.035	8516775	7281397	122.860	91.272 #
26) L6 AR-1254-1	6.865	5.993	23124859	27428491	295.193	222.603
27) L6 AR-1254-2	7.082	6.140	26406155	18949119	223.532	179.967
28) L6 AR-1254-3	7.452	6.565	12142850	42937190	99.505	271.336 #
29) L6 AR-1254-4	7.738	6.779	13025914	2617454	146.479	28.347 #
30) L6 AR-1254-5	8.156	7.201	80408975	57620287	820.850	450.192 #
31) L7 AR-1260-1	7.615	6.682	56004139	48465061	578.221	456.702
32) L7 AR-1260-2	7.870	6.868	66259990	57046726	590.974	462.569
33) L7 AR-1260-3	8.235	7.027	49077764	52351760	562.127	451.403
34) L7 AR-1260-4	8.480	7.502	52470450	41340906	523.599	469.380
35) L7 AR-1260-5	8.826	7.740	101.3E6	90775481	537.318	474.243
36) L8 AR-1262-1	8.297	7.292	27878021	24039496	520.319	432.226
37) L8 AR-1262-2	8.826	7.502	101.3E6	41340906	477.676	371.015
38) L8 AR-1262-3	9.187f	8.027	68587372	21259433	447.997	250.254 #
39) L8 AR-1262-4	9.251f	8.092	44116071	67038912	364.113	436.692
40) L8 AR-1262-5	9.997	8.623	29605355	23495064	364.525	334.529
41) L9 AR-1268-1	9.187f	8.027	68587372	21259433	270.030	91.869 #

Data Path : Z:\pestpcbsrv\HPCHEM1\ECD_P\Data\PP062524\
 Data File : PP066006.D
 Signal(s) : Signal #1: ECD1A.ch Signal #2: ECD2B.ch
 Acq On : 25 Jun 2024 12:57
 Operator : YP\AJ
 Sample : AR1660CCC500
 Misc :
 ALS Vial : 3 Sample Multiplier: 1

Instrument :
 ECD_P
ClientSampleId :
 AR1660CCC500

Integration File signal 1: autoint1.e
 Integration File signal 2: autoint2.e
 Quant Time: Jun 25 14:33:58 2024
 Quant Method : Z:\pestpcbsrv\HPCHEM1\ECD_P\methods\PP060524.M
 Quant Title : GC EXTRACTABLES
 QLast Update : Thu Jun 06 05:25:59 2024
 Response via : Initial Calibration
 Integrator: ChemStation

Volume Inj. : 2 µl
 Signal #1 Phase : ZB-MR1 Signal #2 Phase: ZB-MR2
 Signal #1 Info : 30Mx0.32mmx 0.50µ Signal #2 Info : 30M x 0.32mm x 0.25µm

	Compound	RT#1	RT#2	Resp#1	Resp#2	ng/ml	ng/ml
42)	L9 AR-1268-2	9.251f	8.092	44116071	67038912	186.749	319.431 #
43)	L9 AR-1268-3	9.527	8.311	1477212	1011809	7.273	5.787
44)	L9 AR-1268-4	9.997	8.623	29605355	23495064	355.262	309.887
45)	L9 AR-1268-5	10.460	8.950	8821077	6499880	13.275	12.409

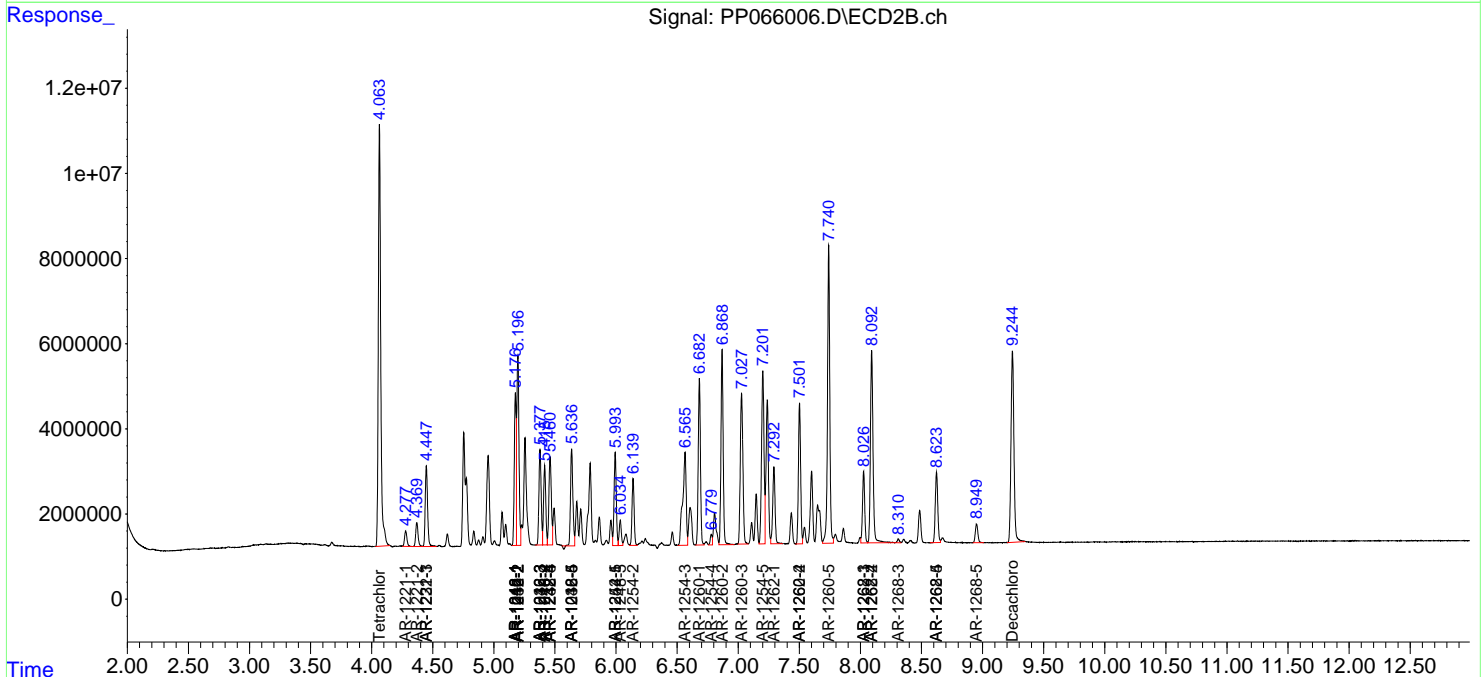
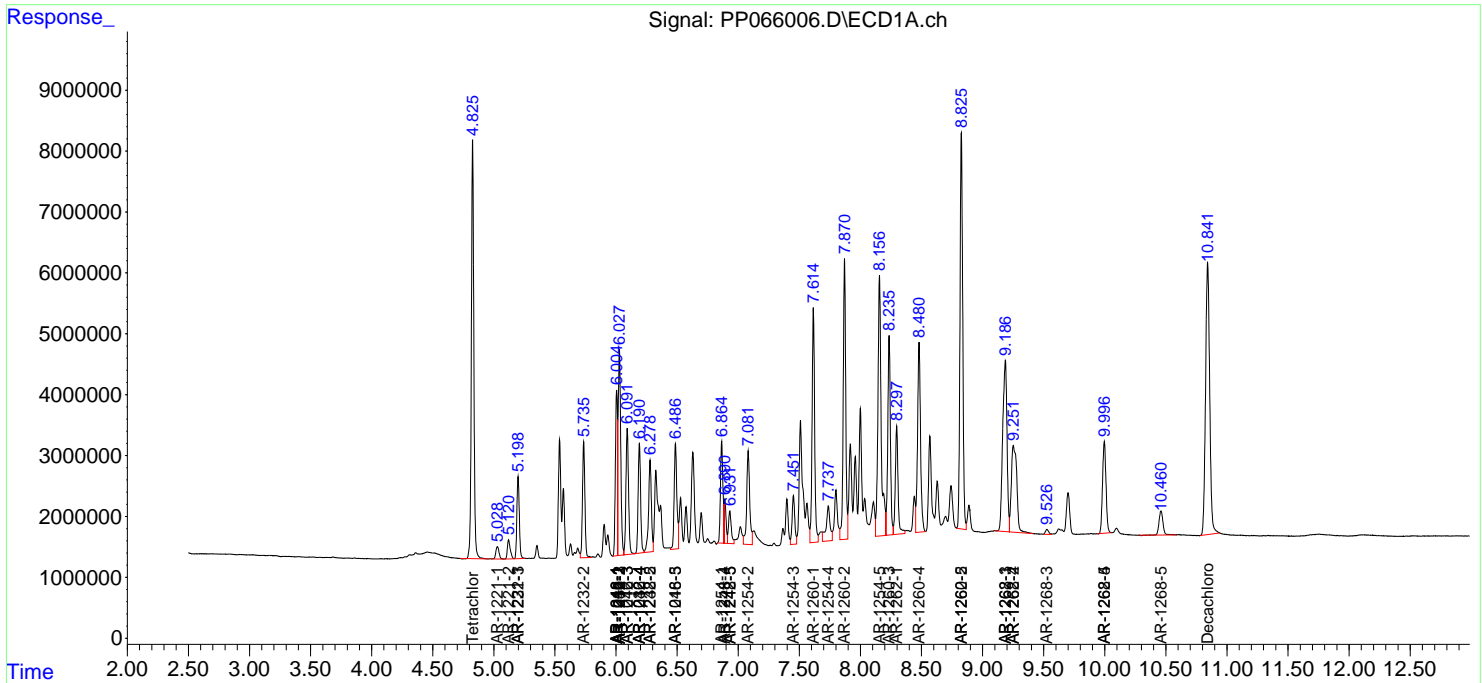
(f)=RT Delta > 1/2 Window (#)=Amounts differ by > 25% (m)=manual int.

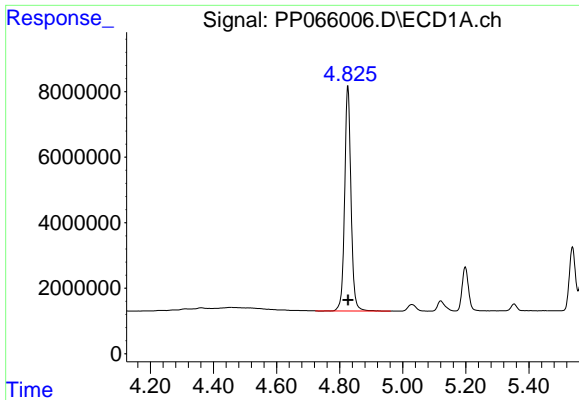
Data Path : Z:\pestpcbsrv\HPCHEM1\ECD_P\Data\PP062524\
 Data File : PP066006.D
 Signal(s) : Signal #1: ECD1A.ch Signal #2: ECD2B.ch
 Acq On : 25 Jun 2024 12:57
 Operator : YP\AJ
 Sample : AR1660CCC500
 Misc :
 ALS Vial : 3 Sample Multiplier: 1

Instrument :
 ECD_P
ClientSampleId :
 AR1660CCC500

Integration File signal 1: autoint1.e
 Integration File signal 2: autoint2.e
 Quant Time: Jun 25 14:33:58 2024
 Quant Method : Z:\pestpcbsrv\HPCHEM1\ECD_P\methods\PP060524.M
 Quant Title : GC EXTRACTABLES
 QLast Update : Thu Jun 06 05:25:59 2024
 Response via : Initial Calibration
 Integrator: ChemStation

Volume Inj. : 2 µl
 Signal #1 Phase : ZB-MR1 Signal #2 Phase: ZB-MR2
 Signal #1 Info : 30Mx0.32mmx 0.50µ Signal #2 Info : 30M x 0.32mm x 0.25µm

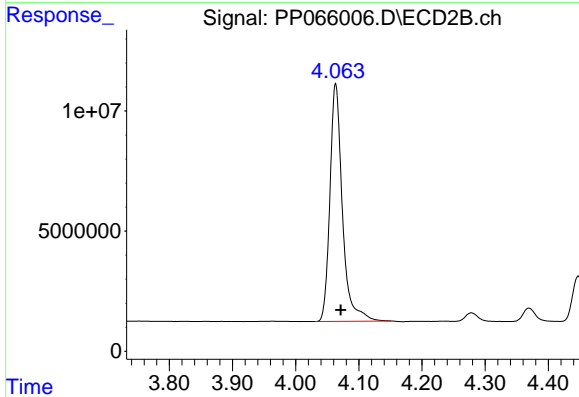




#1 Tetrachloro-m-xylene

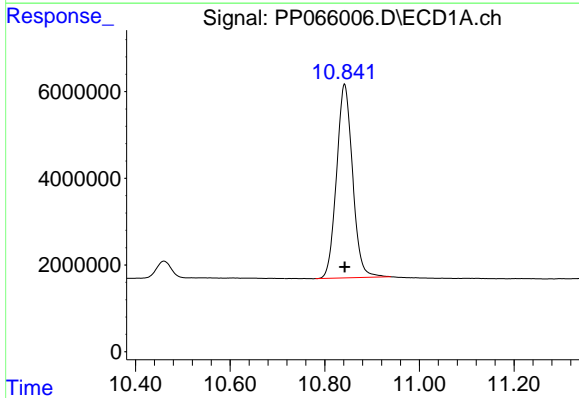
R.T.: 4.826 min
 Delta R.T.: 0.000 min
 Response: 96013229
 Conc: 50.61 ng/ml

Instrument :
 ECD_P
 ClientSampleId :
 AR1660CCC500



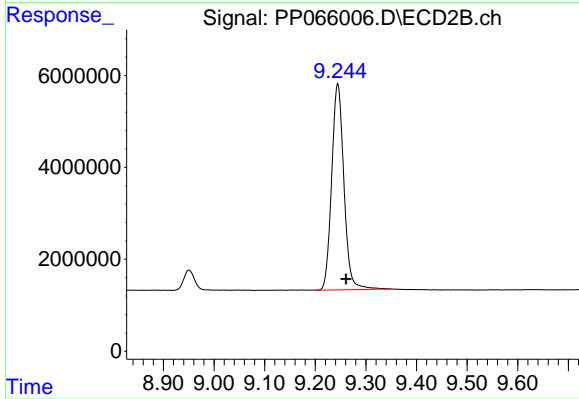
#1 Tetrachloro-m-xylene

R.T.: 4.063 min
 Delta R.T.: -0.008 min
 Response: 135959073
 Conc: 48.69 ng/ml



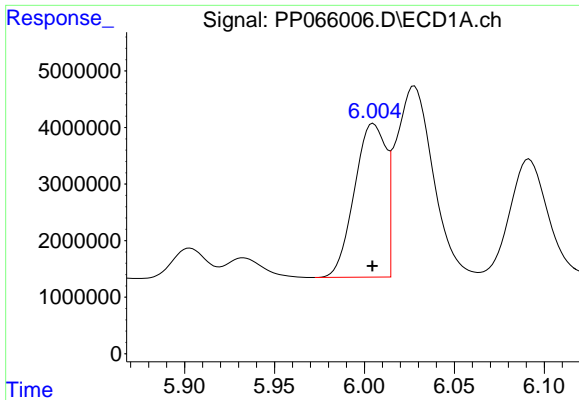
#2 Decachlorobiphenyl

R.T.: 10.842 min
 Delta R.T.: 0.000 min
 Response: 104937115
 Conc: 53.35 ng/ml



#2 Decachlorobiphenyl

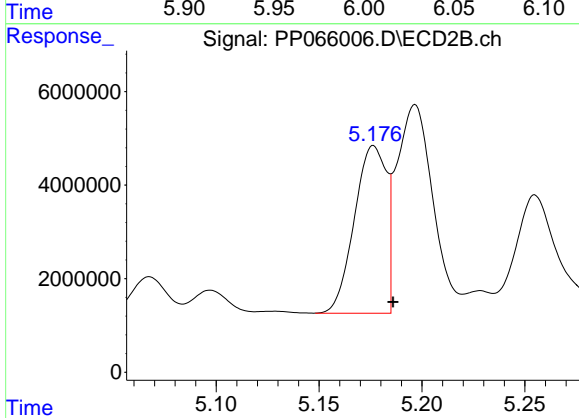
R.T.: 9.244 min
 Delta R.T.: -0.016 min
 Response: 75306910
 Conc: 51.12 ng/ml



#3 AR-1016-1

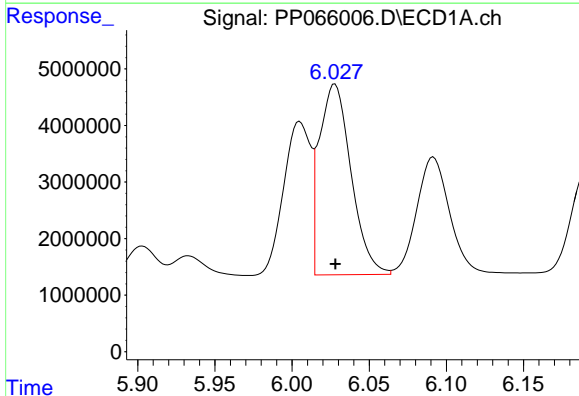
R.T.: 6.005 min
 Delta R.T.: 0.000 min
 Response: 33024495
 Conc: 507.96 ng/ml

Instrument :
 ECD_P
 ClientSampleId :
 AR1660CCC500



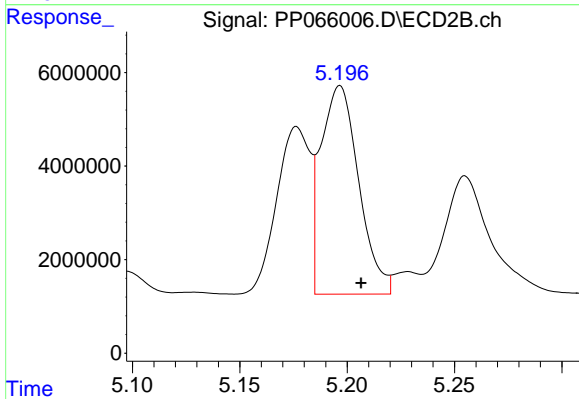
#3 AR-1016-1

R.T.: 5.176 min
 Delta R.T.: -0.010 min
 Response: 38823013
 Conc: 455.22 ng/ml



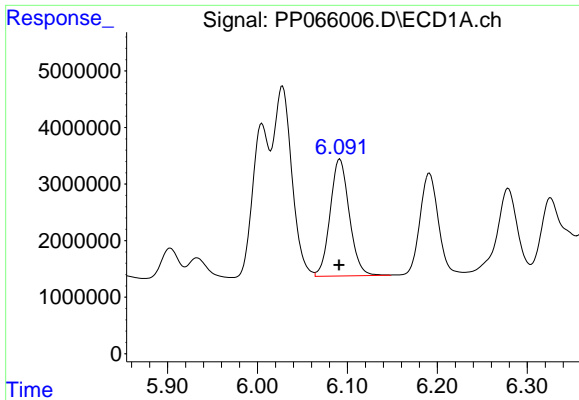
#4 AR-1016-2

R.T.: 6.028 min
 Delta R.T.: 0.000 min
 Response: 48440097
 Conc: 505.78 ng/ml



#4 AR-1016-2

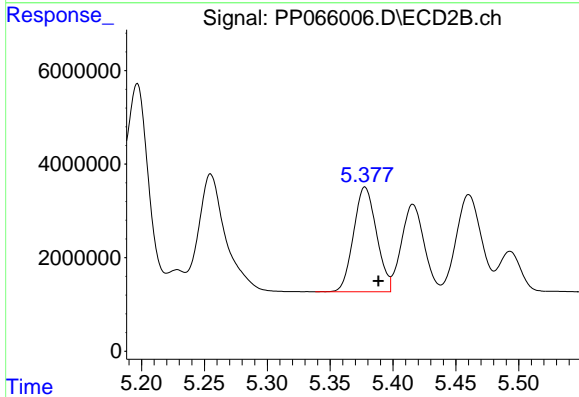
R.T.: 5.197 min
 Delta R.T.: -0.010 min
 Response: 54766190
 Conc: 463.86 ng/ml



#5 AR-1016-3

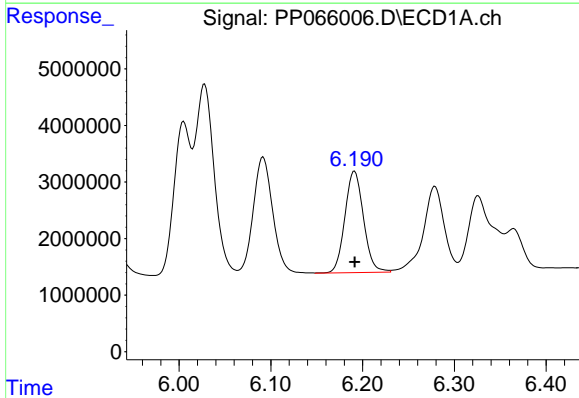
R.T.: 6.092 min
 Delta R.T.: 0.000 min
 Response: 30605243
 Conc: 500.21 ng/ml

Instrument :
 ECD_P
 ClientSampleId :
 AR1660CCC500



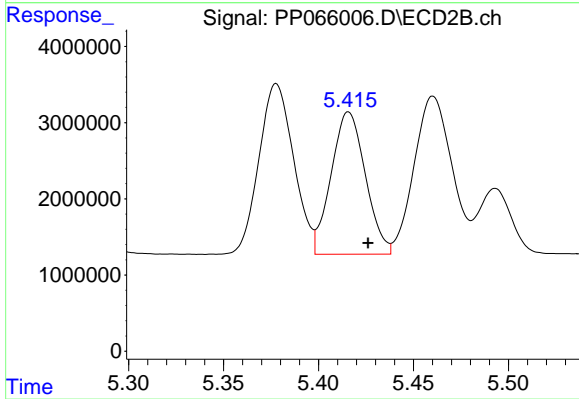
#5 AR-1016-3

R.T.: 5.378 min
 Delta R.T.: -0.011 min
 Response: 28450070
 Conc: 443.31 ng/ml



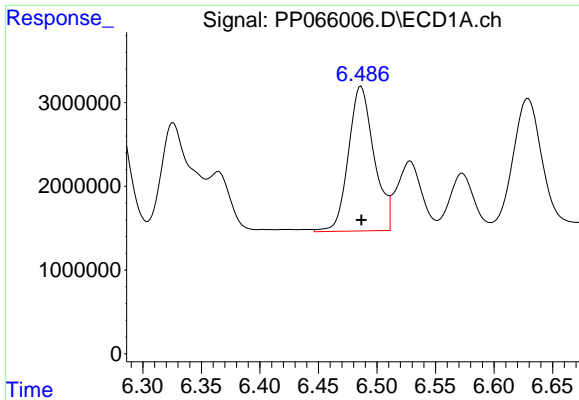
#6 AR-1016-4

R.T.: 6.191 min
 Delta R.T.: 0.000 min
 Response: 25337335
 Conc: 515.22 ng/ml



#6 AR-1016-4

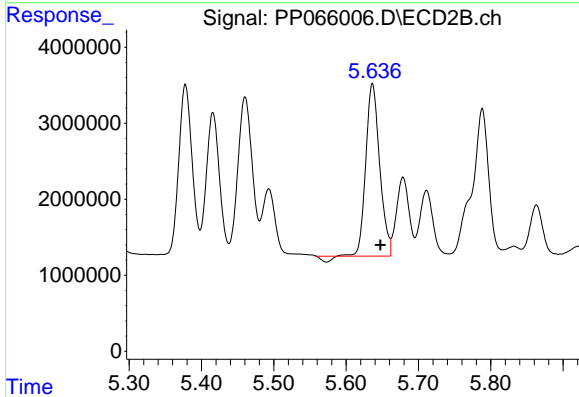
R.T.: 5.416 min
 Delta R.T.: -0.010 min
 Response: 23448540
 Conc: 454.39 ng/ml



#7 AR-1016-5

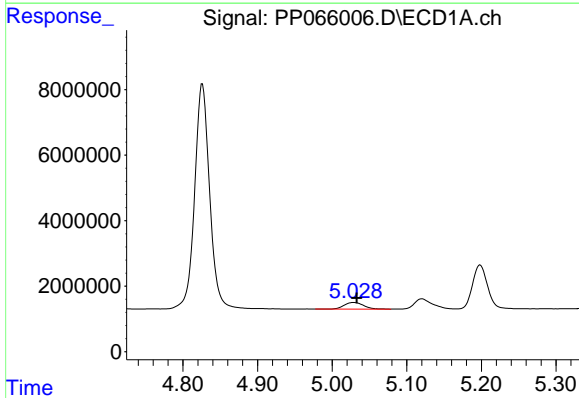
R.T.: 6.486 min
 Delta R.T.: 0.000 min
 Response: 26299893
 Conc: 524.68 ng/ml

Instrument :
 ECD_P
 ClientSampleId :
 AR1660CCC500



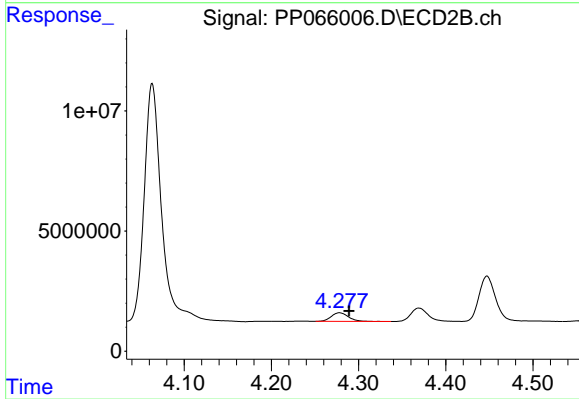
#7 AR-1016-5

R.T.: 5.636 min
 Delta R.T.: -0.011 min
 Response: 29865231
 Conc: 452.74 ng/ml



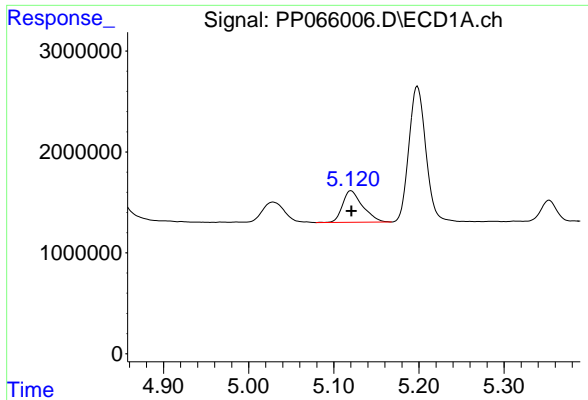
#8 AR-1221-1

R.T.: 5.029 min
 Delta R.T.: -0.004 min
 Response: 3696886
 Conc: 144.87 ng/ml



#8 AR-1221-1

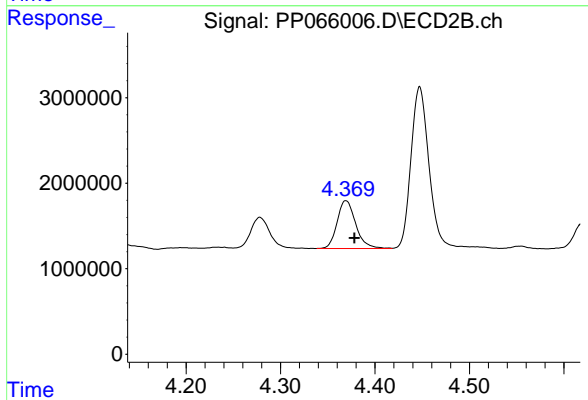
R.T.: 4.278 min
 Delta R.T.: -0.011 min
 Response: 4957128
 Conc: 142.47 ng/ml



#9 AR-1221-2

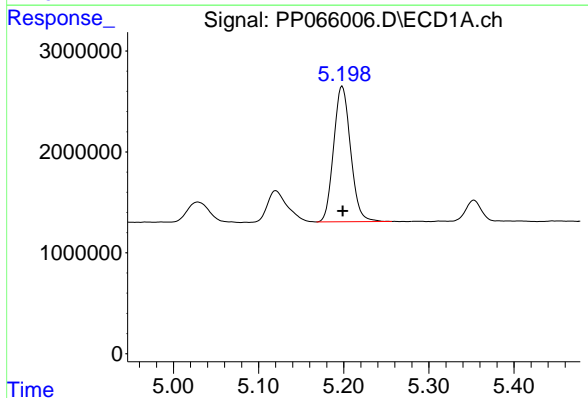
R.T.: 5.120 min
Delta R.T.: 0.000 min
Response: 5133352
Conc: 265.81 ng/ml

Instrument :
ECD_P
ClientSampleId :
AR1660CCC500



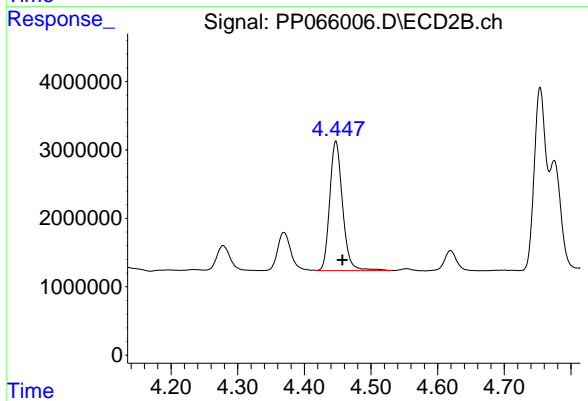
#9 AR-1221-2

R.T.: 4.369 min
Delta R.T.: -0.009 min
Response: 7658138
Conc: 283.69 ng/ml



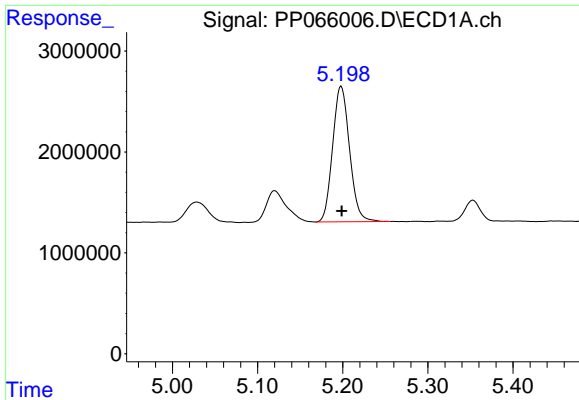
#10 AR-1221-3

R.T.: 5.198 min
Delta R.T.: 0.000 min
Response: 18576328
Conc: 330.57 ng/ml



#10 AR-1221-3

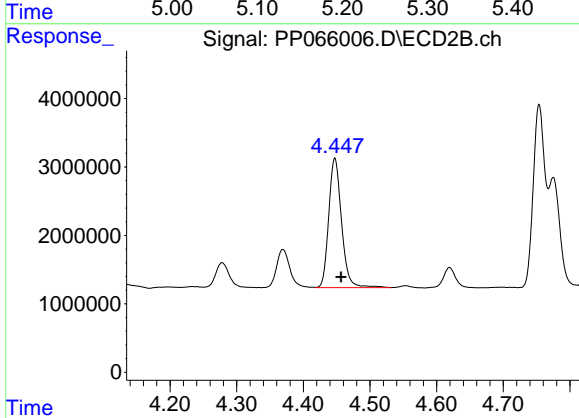
R.T.: 4.447 min
Delta R.T.: -0.010 min
Response: 25299206
Conc: 326.22 ng/ml



#11 AR-1232-1

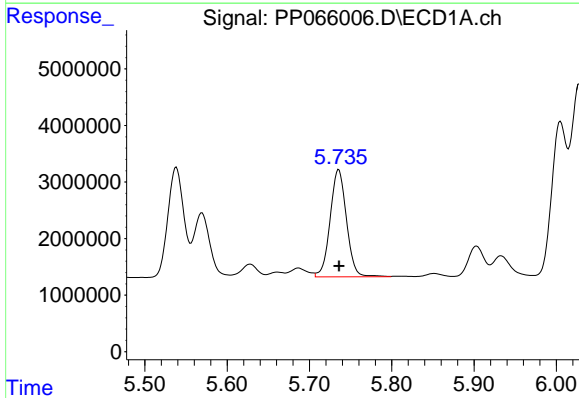
R.T.: 5.198 min
 Delta R.T.: 0.000 min
 Response: 18576328
 Conc: 410.57 ng/ml

Instrument :
 ECD_P
 ClientSampleId :
 AR1660CCC500



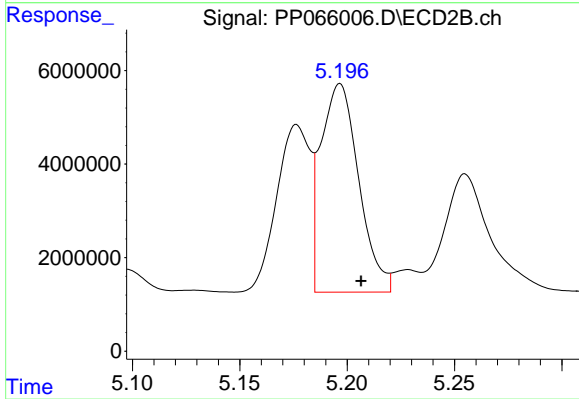
#11 AR-1232-1

R.T.: 4.447 min
 Delta R.T.: -0.009 min
 Response: 25299206
 Conc: 400.24 ng/ml



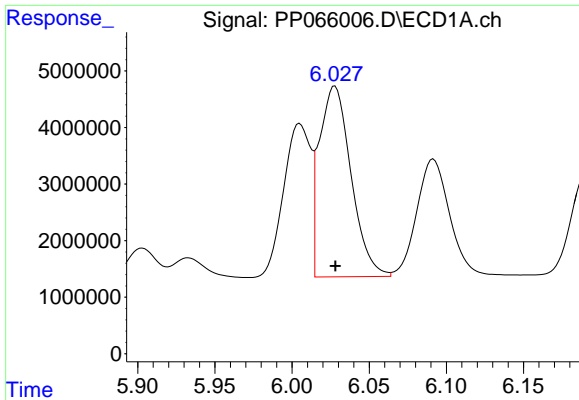
#12 AR-1232-2

R.T.: 5.736 min
 Delta R.T.: 0.000 min
 Response: 26161566
 Conc: 1004.50 ng/ml



#12 AR-1232-2

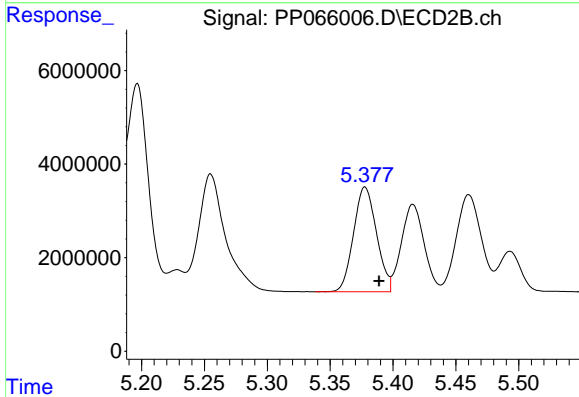
R.T.: 5.197 min
 Delta R.T.: -0.010 min
 Response: 54766190
 Conc: 981.62 ng/ml



#13 AR-1232-3

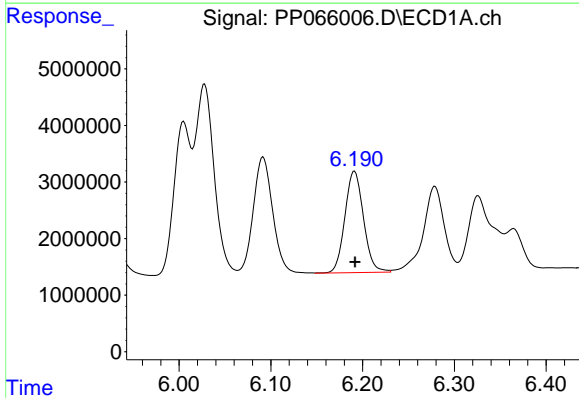
R.T.: 6.028 min
 Delta R.T.: 0.000 min
 Response: 48440097
 Conc: 1070.80 ng/ml

Instrument :
 ECD_P
 ClientSampleId :
 AR1660CCC500



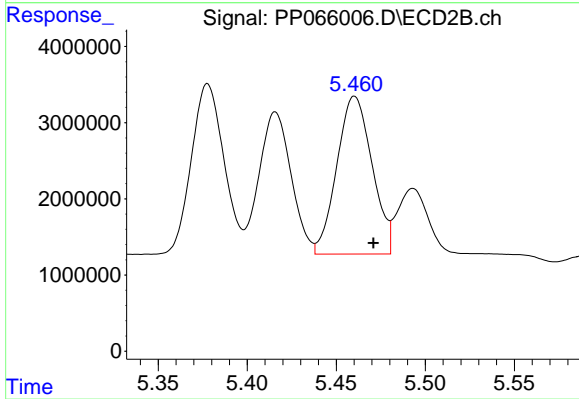
#13 AR-1232-3

R.T.: 5.378 min
 Delta R.T.: -0.011 min
 Response: 28450070
 Conc: 944.64 ng/ml



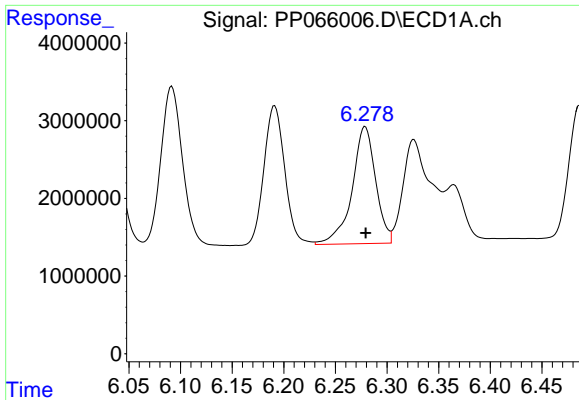
#14 AR-1232-4

R.T.: 6.191 min
 Delta R.T.: 0.000 min
 Response: 25337335
 Conc: 1084.73 ng/ml



#14 AR-1232-4

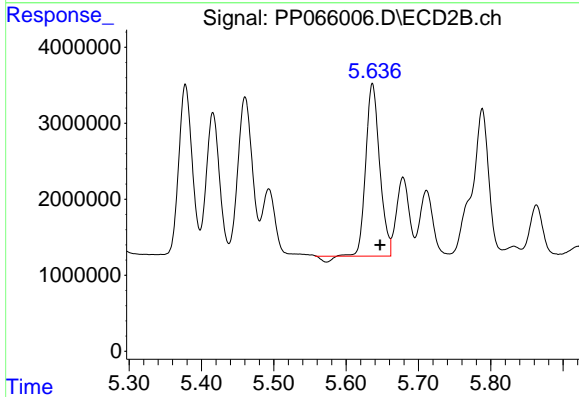
R.T.: 5.460 min
 Delta R.T.: -0.011 min
 Response: 28533705
 Conc: 1042.90 ng/ml



#15 AR-1232-5

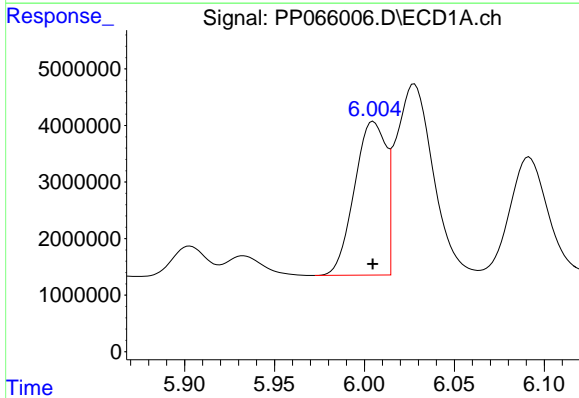
R.T.: 6.279 min
 Delta R.T.: 0.000 min
 Response: 23915668
 Conc: 1218.19 ng/ml

Instrument :
 ECD_P
 ClientSampleId :
 AR1660CCC500



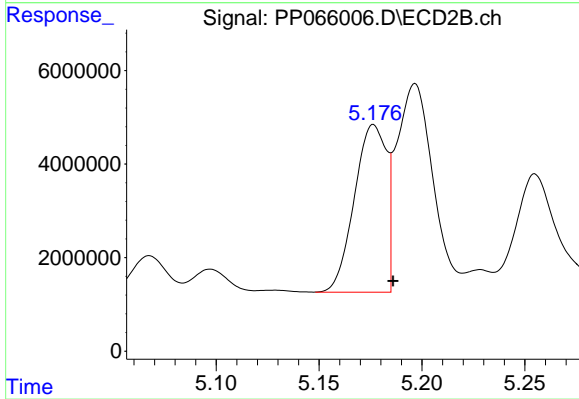
#15 AR-1232-5

R.T.: 5.636 min
 Delta R.T.: -0.010 min
 Response: 29865231
 Conc: 1021.40 ng/ml



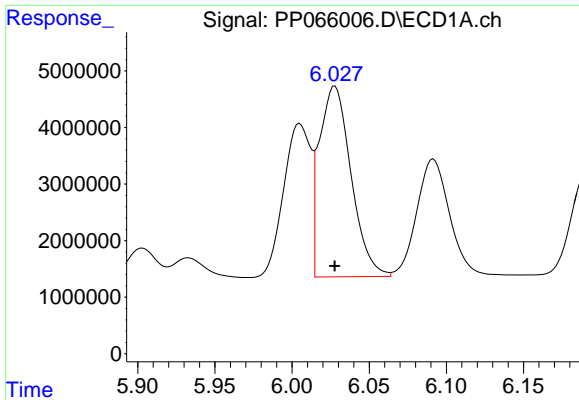
#16 AR-1242-1

R.T.: 6.005 min
 Delta R.T.: 0.000 min
 Response: 33024495
 Conc: 603.93 ng/ml



#16 AR-1242-1

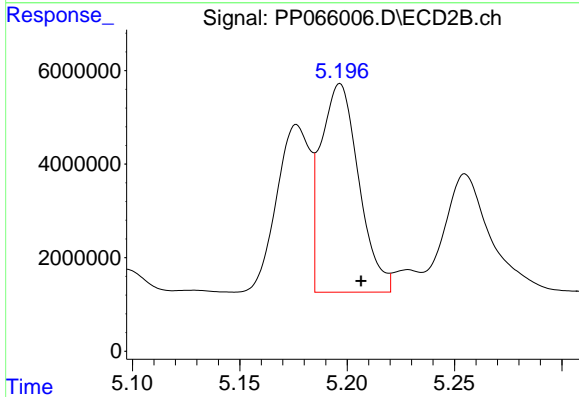
R.T.: 5.176 min
 Delta R.T.: -0.010 min
 Response: 38823013
 Conc: 540.26 ng/ml



#17 AR-1242-2

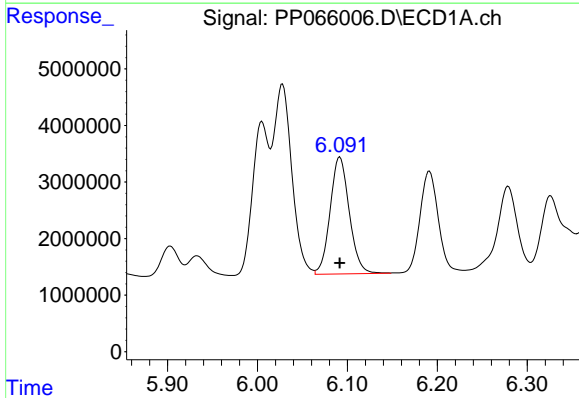
R.T.: 6.028 min
 Delta R.T.: 0.000 min
 Response: 48440097
 Conc: 610.84 ng/ml

Instrument :
 ECD_P
 ClientSampleId :
 AR1660CCC500



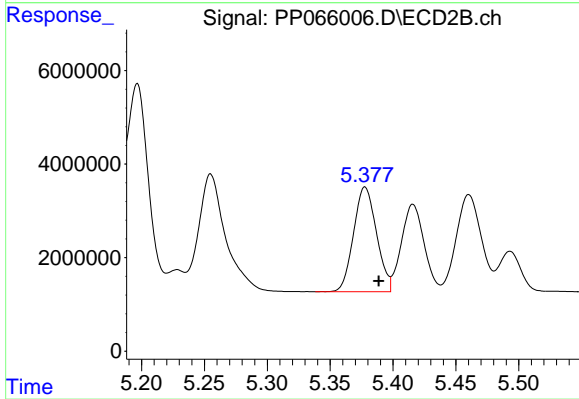
#17 AR-1242-2

R.T.: 5.197 min
 Delta R.T.: -0.010 min
 Response: 54766190
 Conc: 550.71 ng/ml



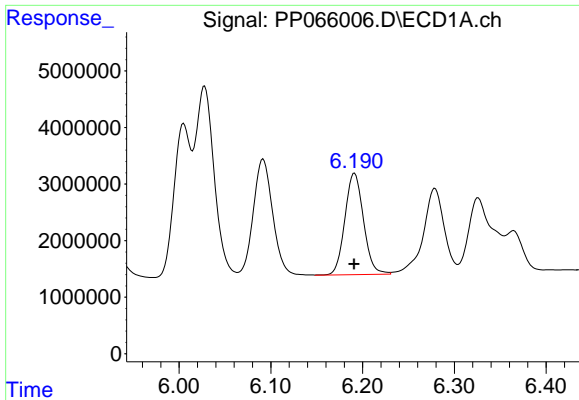
#18 AR-1242-3

R.T.: 6.092 min
 Delta R.T.: 0.000 min
 Response: 30605243
 Conc: 605.47 ng/ml



#18 AR-1242-3

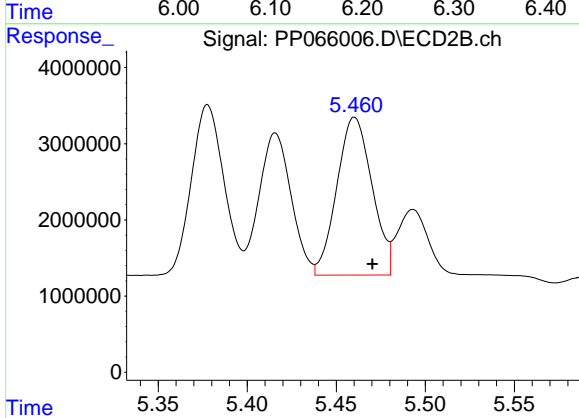
R.T.: 5.378 min
 Delta R.T.: -0.011 min
 Response: 28450070
 Conc: 528.92 ng/ml



#19 AR-1242-4

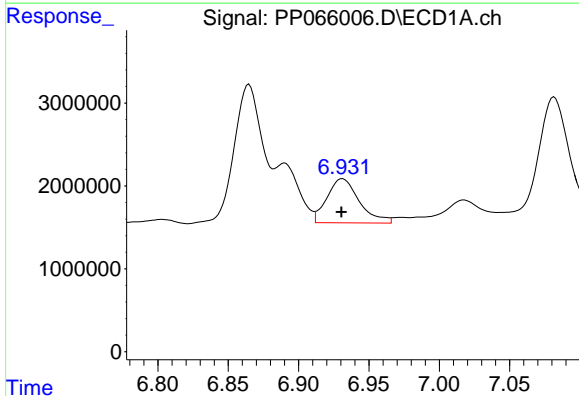
R.T.: 6.191 min
 Delta R.T.: 0.000 min
 Response: 25337335
 Conc: 617.45 ng/ml

Instrument :
 ECD_P
 ClientSampleId :
 AR1660CCC500



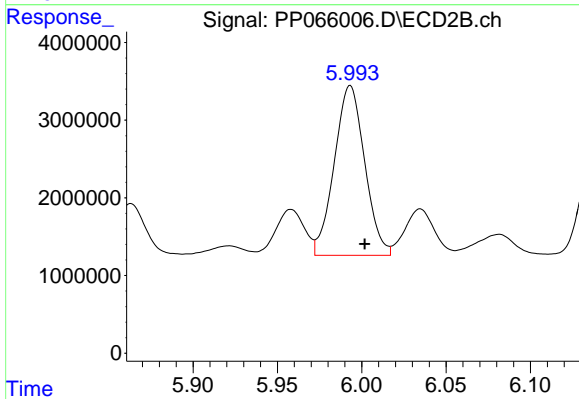
#19 AR-1242-4

R.T.: 5.460 min
 Delta R.T.: -0.010 min
 Response: 28533705
 Conc: 535.74 ng/ml



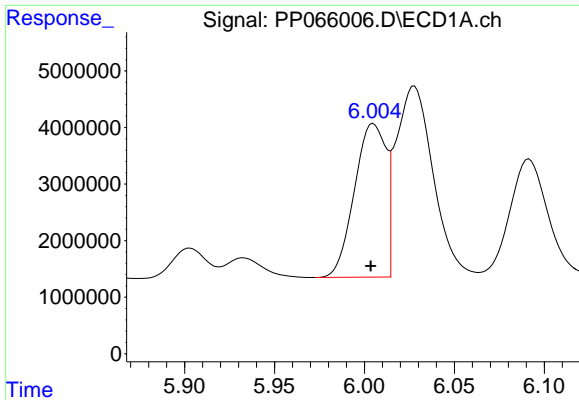
#20 AR-1242-5

R.T.: 6.931 min
 Delta R.T.: 0.000 min
 Response: 8516775
 Conc: 195.24 ng/ml



#20 AR-1242-5

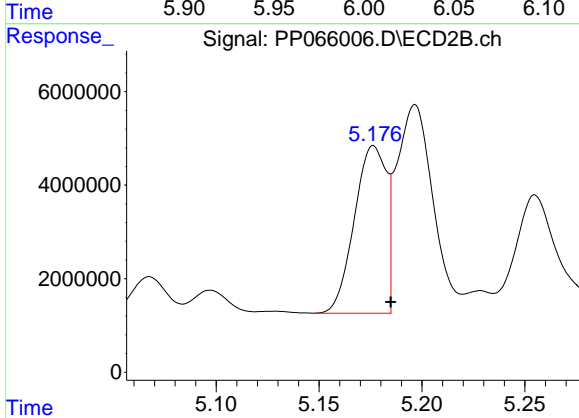
R.T.: 5.993 min
 Delta R.T.: -0.009 min
 Response: 27428491
 Conc: 461.62 ng/ml



#21 AR-1248-1

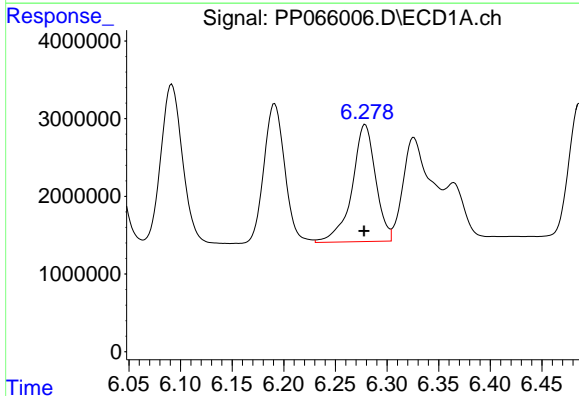
R.T.: 6.005 min
 Delta R.T.: 0.001 min
 Response: 33024495
 Conc: 812.03 ng/ml

Instrument :
 ECD_P
 ClientSampleId :
 AR1660CCC500



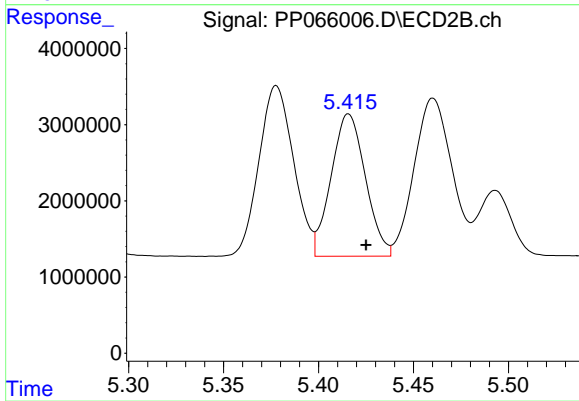
#21 AR-1248-1

R.T.: 5.176 min
 Delta R.T.: -0.008 min
 Response: 38823013
 Conc: 727.38 ng/ml



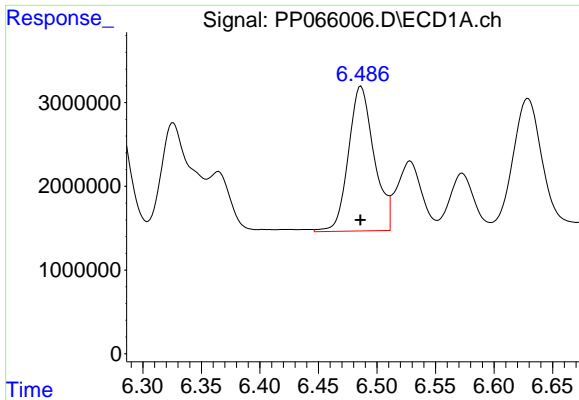
#22 AR-1248-2

R.T.: 6.279 min
 Delta R.T.: 0.000 min
 Response: 23915668
 Conc: 383.74 ng/ml



#22 AR-1248-2

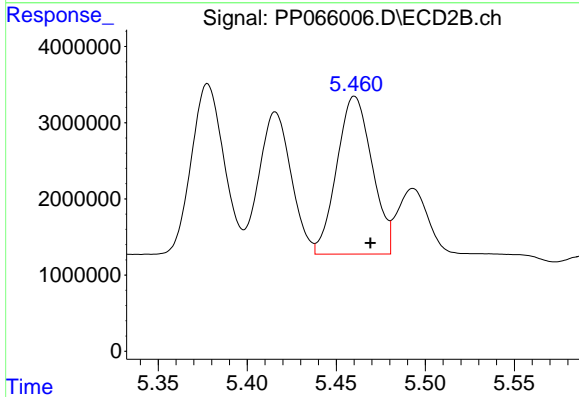
R.T.: 5.416 min
 Delta R.T.: -0.009 min
 Response: 23448540
 Conc: 318.57 ng/ml



#23 AR-1248-3

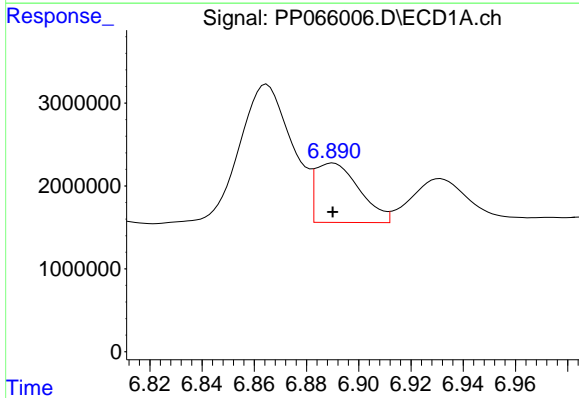
R.T.: 6.486 min
 Delta R.T.: 0.000 min
 Response: 26299893
 Conc: 390.55 ng/ml

Instrument :
 ECD_P
 ClientSampleId :
 AR1660CCC500



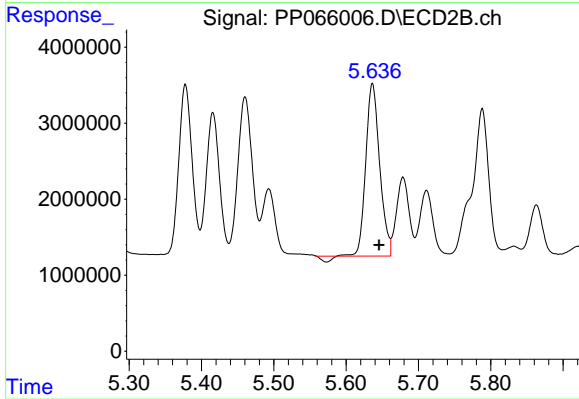
#23 AR-1248-3

R.T.: 5.460 min
 Delta R.T.: -0.009 min
 Response: 28533705
 Conc: 373.39 ng/ml



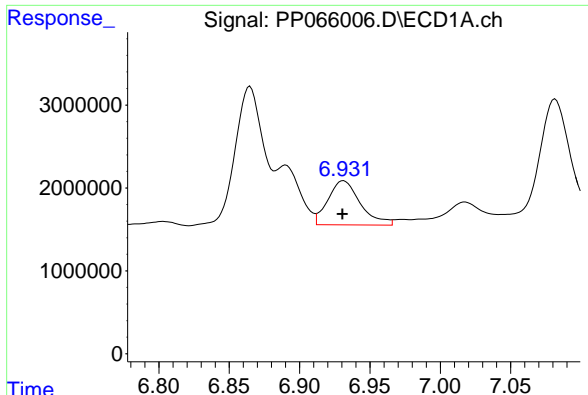
#24 AR-1248-4

R.T.: 6.890 min
 Delta R.T.: 0.000 min
 Response: 8370193
 Conc: 117.57 ng/ml



#24 AR-1248-4

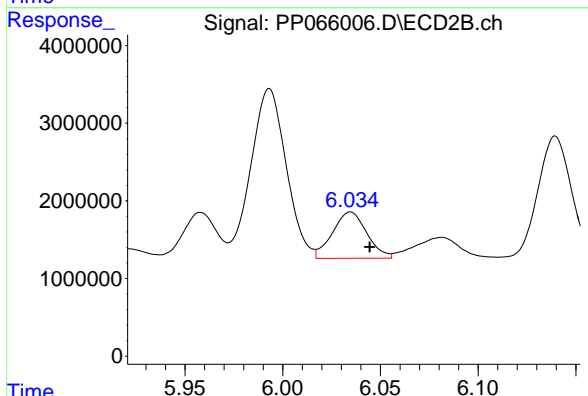
R.T.: 5.636 min
 Delta R.T.: -0.009 min
 Response: 29865231
 Conc: 339.71 ng/ml



#25 AR-1248-5

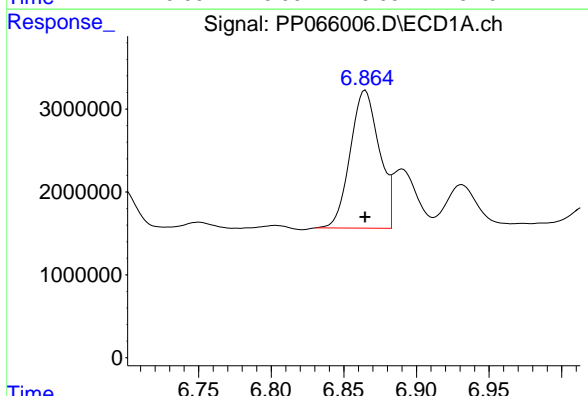
R.T.: 6.931 min
 Delta R.T.: 0.000 min
 Response: 8516775
 Conc: 122.86 ng/ml

Instrument :
 ECD_P
 ClientSampleId :
 AR1660CCC500



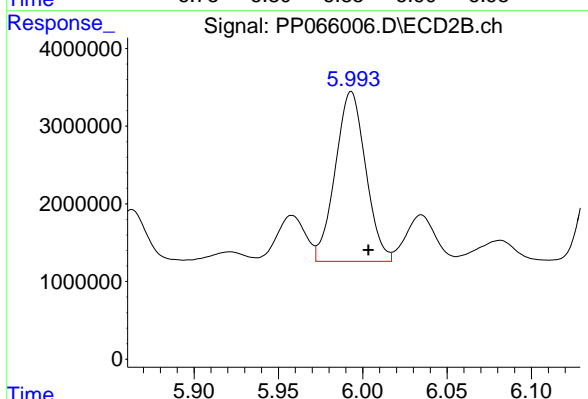
#25 AR-1248-5

R.T.: 6.035 min
 Delta R.T.: -0.010 min
 Response: 7281397
 Conc: 91.27 ng/ml



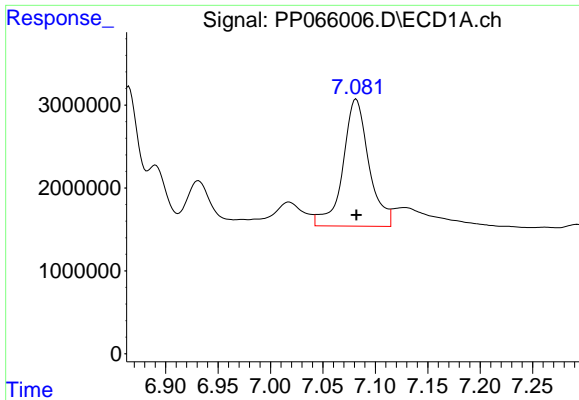
#26 AR-1254-1

R.T.: 6.865 min
 Delta R.T.: 0.000 min
 Response: 23124859
 Conc: 295.19 ng/ml



#26 AR-1254-1

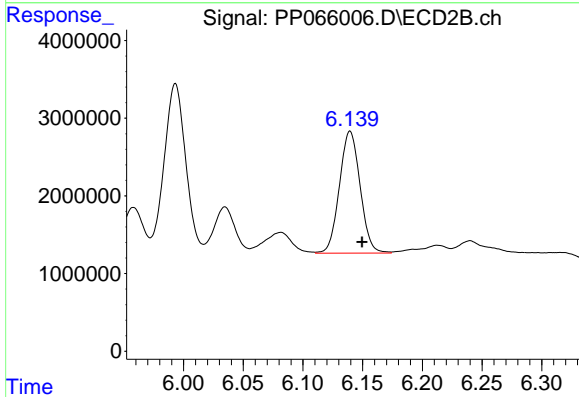
R.T.: 5.993 min
 Delta R.T.: -0.010 min
 Response: 27428491
 Conc: 222.60 ng/ml



#27 AR-1254-2

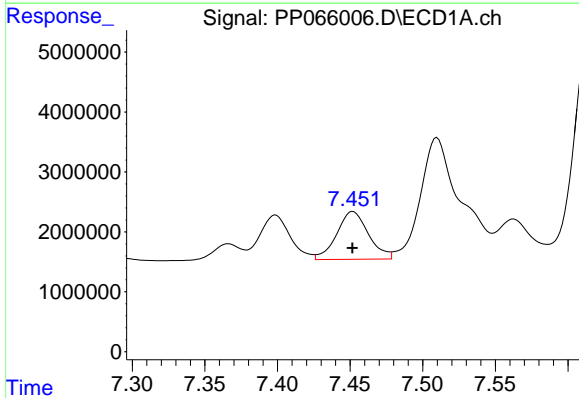
R.T.: 7.082 min
 Delta R.T.: 0.000 min
 Response: 26406155
 Conc: 223.53 ng/ml

Instrument :
 ECD_P
 ClientSampleId :
 AR1660CCC500



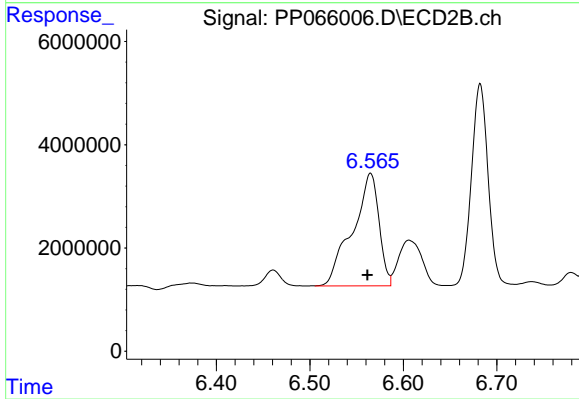
#27 AR-1254-2

R.T.: 6.140 min
 Delta R.T.: -0.010 min
 Response: 18949119
 Conc: 179.97 ng/ml



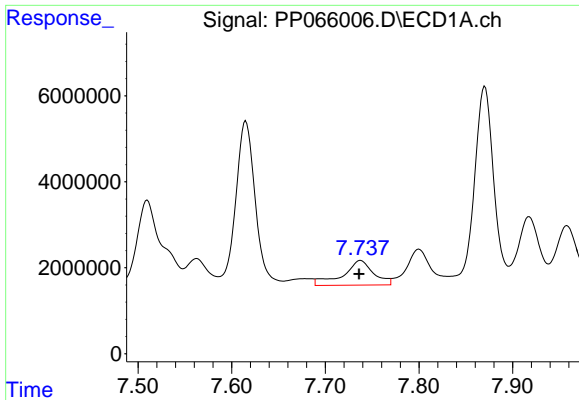
#28 AR-1254-3

R.T.: 7.452 min
 Delta R.T.: 0.000 min
 Response: 12142850
 Conc: 99.50 ng/ml



#28 AR-1254-3

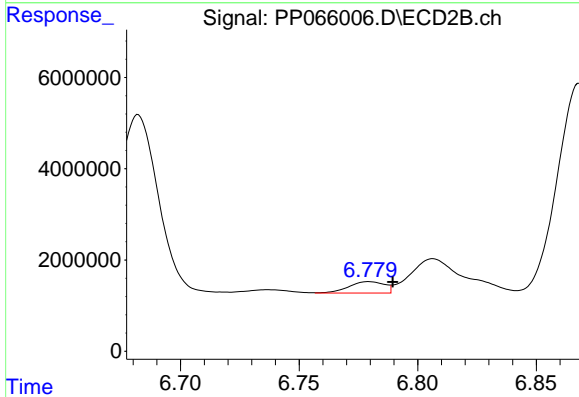
R.T.: 6.565 min
 Delta R.T.: 0.003 min
 Response: 42937190
 Conc: 271.34 ng/ml



#29 AR-1254-4

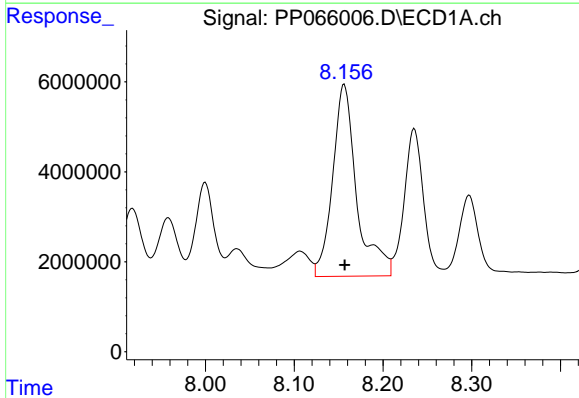
R.T.: 7.738 min
 Delta R.T.: 0.002 min
 Response: 13025914
 Conc: 146.48 ng/ml

Instrument :
 ECD_P
 ClientSampleId :
 AR1660CCC500



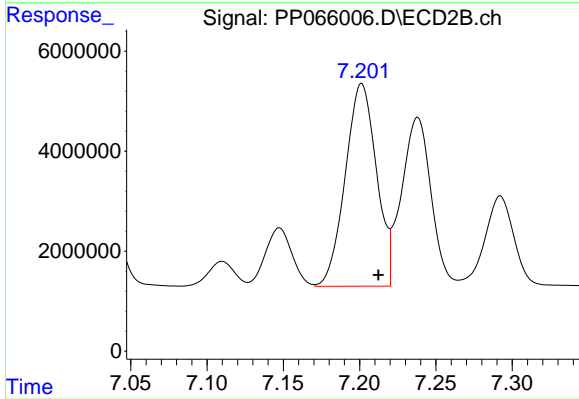
#29 AR-1254-4

R.T.: 6.779 min
 Delta R.T.: -0.010 min
 Response: 2617454
 Conc: 28.35 ng/ml



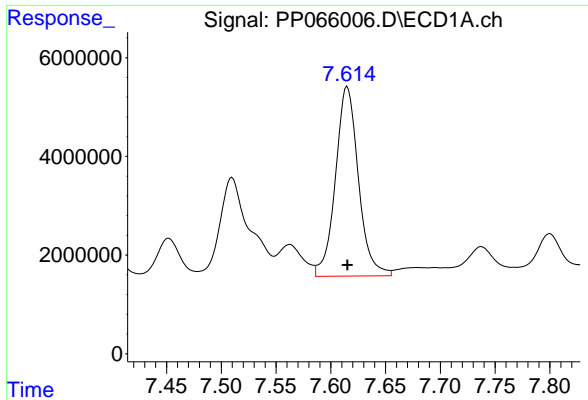
#30 AR-1254-5

R.T.: 8.156 min
 Delta R.T.: 0.000 min
 Response: 80408975
 Conc: 820.85 ng/ml



#30 AR-1254-5

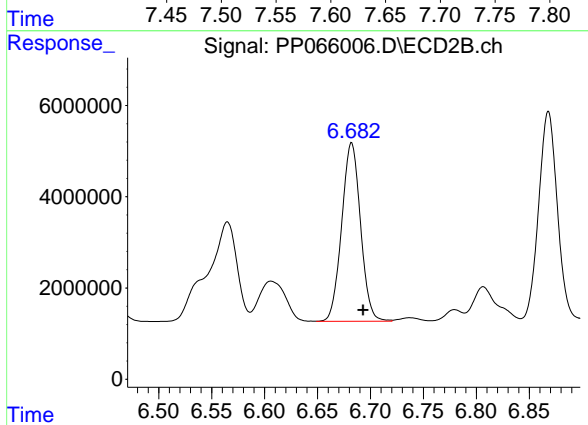
R.T.: 7.201 min
 Delta R.T.: -0.011 min
 Response: 57620287
 Conc: 450.19 ng/ml



#31 AR-1260-1

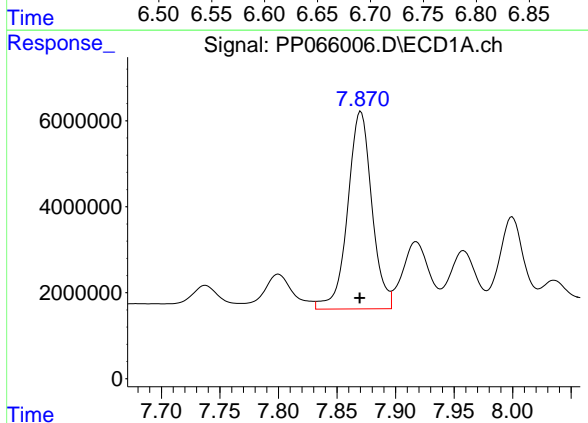
R.T.: 7.615 min
 Delta R.T.: 0.000 min
 Response: 56004139
 Conc: 578.22 ng/ml

Instrument :
 ECD_P
 ClientSampleId :
 AR1660CCC500



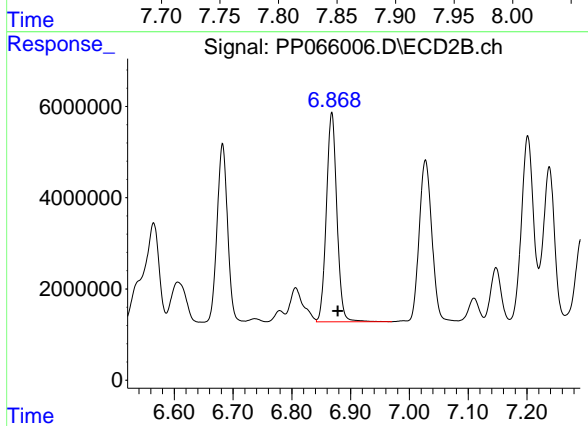
#31 AR-1260-1

R.T.: 6.682 min
 Delta R.T.: -0.011 min
 Response: 48465061
 Conc: 456.70 ng/ml



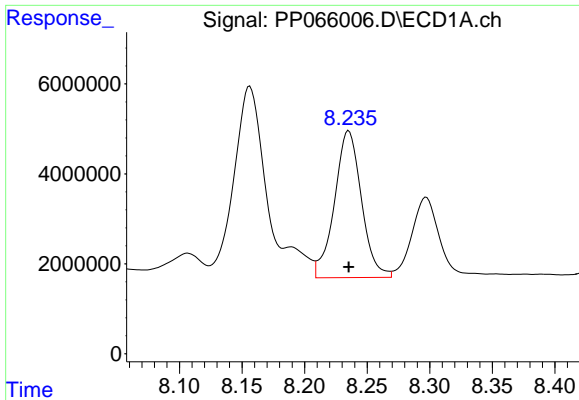
#32 AR-1260-2

R.T.: 7.870 min
 Delta R.T.: 0.000 min
 Response: 66259990
 Conc: 590.97 ng/ml



#32 AR-1260-2

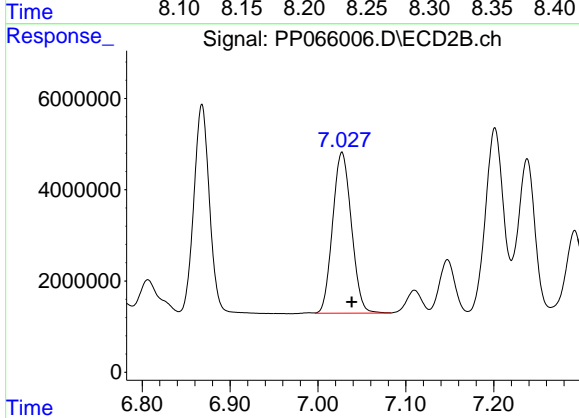
R.T.: 6.868 min
 Delta R.T.: -0.010 min
 Response: 57046726
 Conc: 462.57 ng/ml



#33 AR-1260-3

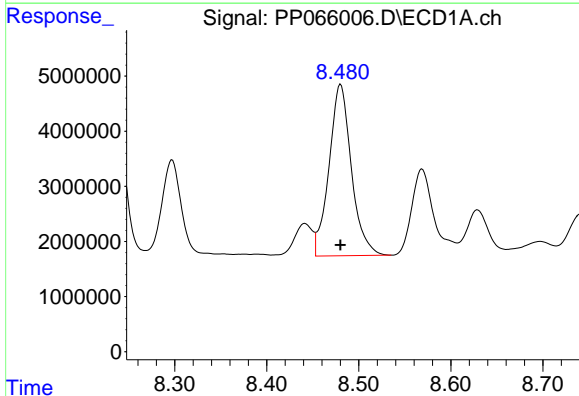
R.T.: 8.235 min
 Delta R.T.: 0.000 min
 Response: 49077764
 Conc: 562.13 ng/ml

Instrument :
 ECD_P
 ClientSampleId :
 AR1660CCC500



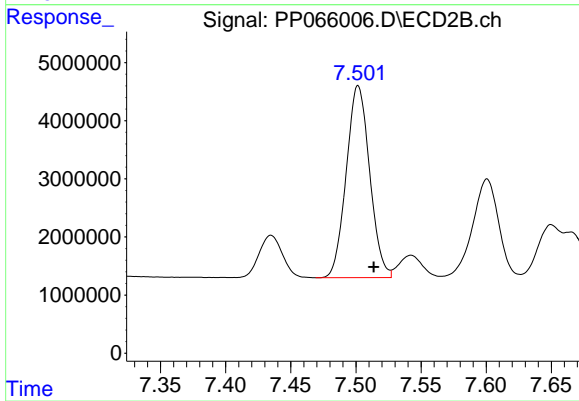
#33 AR-1260-3

R.T.: 7.027 min
 Delta R.T.: -0.011 min
 Response: 52351760
 Conc: 451.40 ng/ml



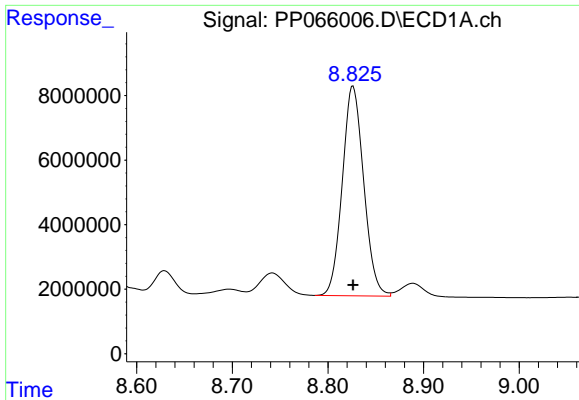
#34 AR-1260-4

R.T.: 8.480 min
 Delta R.T.: 0.000 min
 Response: 52470450
 Conc: 523.60 ng/ml



#34 AR-1260-4

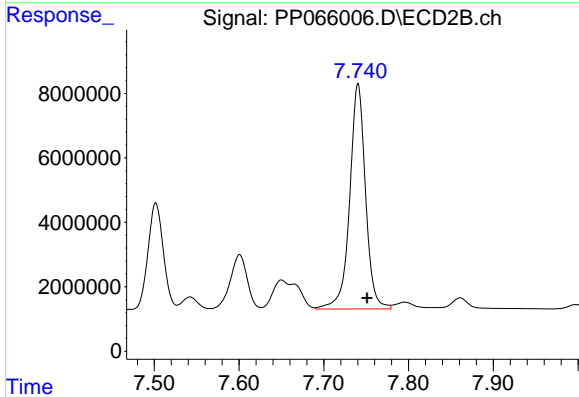
R.T.: 7.502 min
 Delta R.T.: -0.012 min
 Response: 41340906
 Conc: 469.38 ng/ml



#35 AR-1260-5

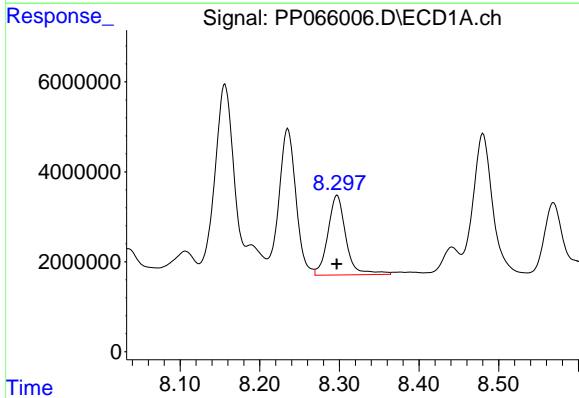
R.T.: 8.826 min
 Delta R.T.: 0.000 min
 Response: 101330244
 Conc: 537.32 ng/ml

Instrument :
 ECD_P
 ClientSampleId :
 AR1660CCC500



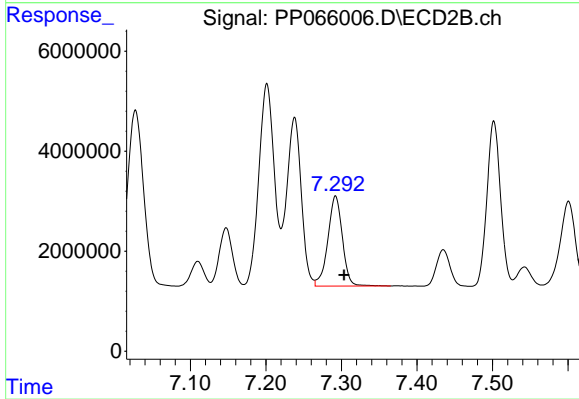
#35 AR-1260-5

R.T.: 7.740 min
 Delta R.T.: -0.010 min
 Response: 90775481
 Conc: 474.24 ng/ml



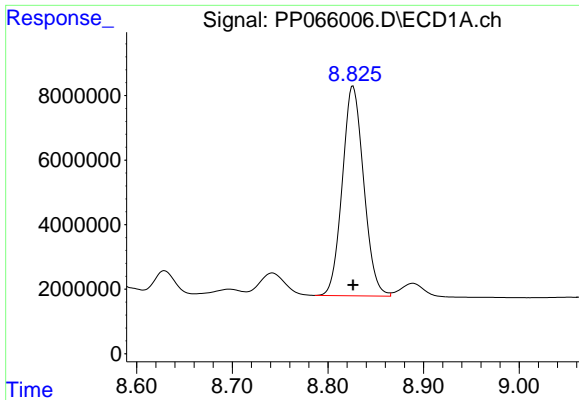
#36 AR-1262-1

R.T.: 8.297 min
 Delta R.T.: 0.000 min
 Response: 27878021
 Conc: 520.32 ng/ml



#36 AR-1262-1

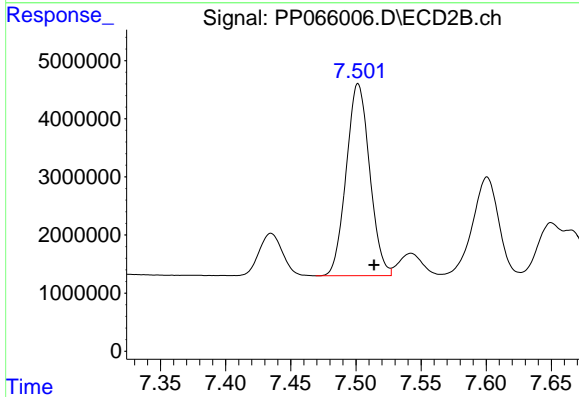
R.T.: 7.292 min
 Delta R.T.: -0.011 min
 Response: 24039496
 Conc: 432.23 ng/ml



#37 AR-1262-2

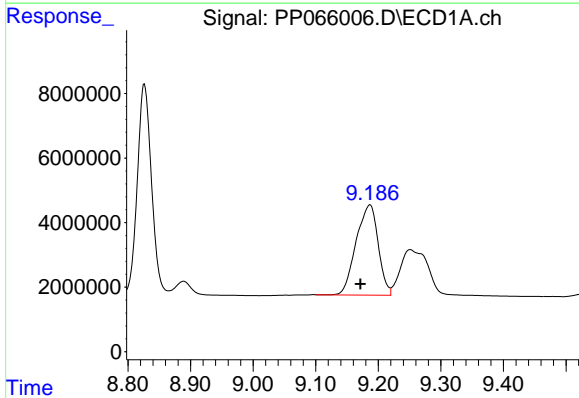
R.T.: 8.826 min
 Delta R.T.: 0.000 min
 Response: 101330244
 Conc: 477.68 ng/ml

Instrument :
 ECD_P
 ClientSampleId :
 AR1660CCC500



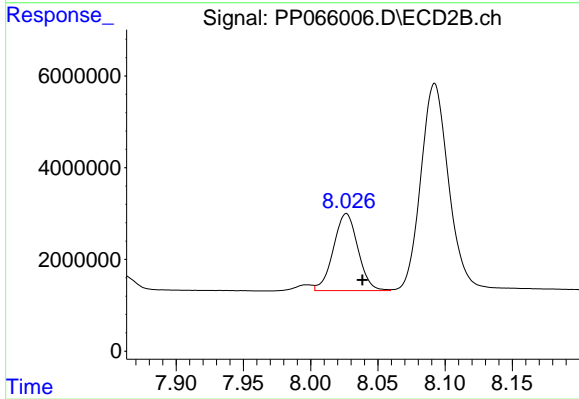
#37 AR-1262-2

R.T.: 7.502 min
 Delta R.T.: -0.012 min
 Response: 41340906
 Conc: 371.01 ng/ml



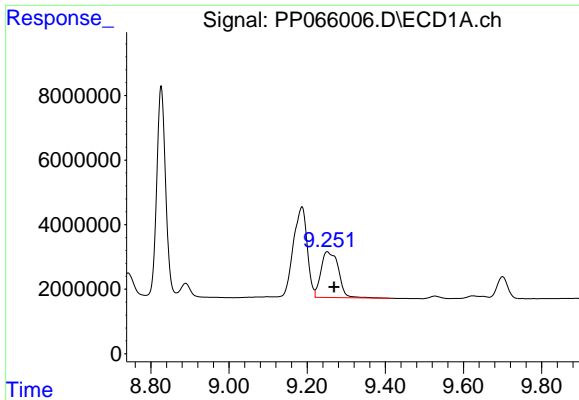
#38 AR-1262-3

R.T.: 9.187 min
 Delta R.T.: 0.015 min
 Response: 68587372
 Conc: 448.00 ng/ml



#38 AR-1262-3

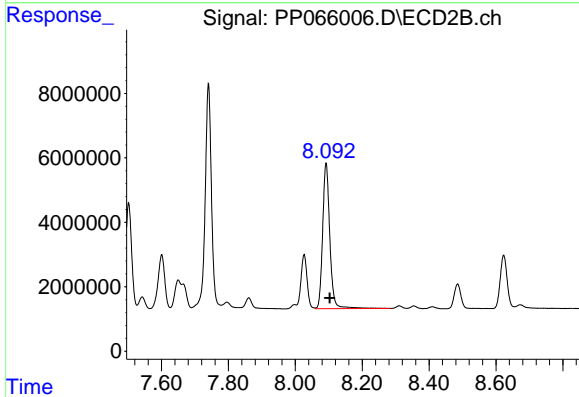
R.T.: 8.027 min
 Delta R.T.: -0.012 min
 Response: 21259433
 Conc: 250.25 ng/ml



#39 AR-1262-4

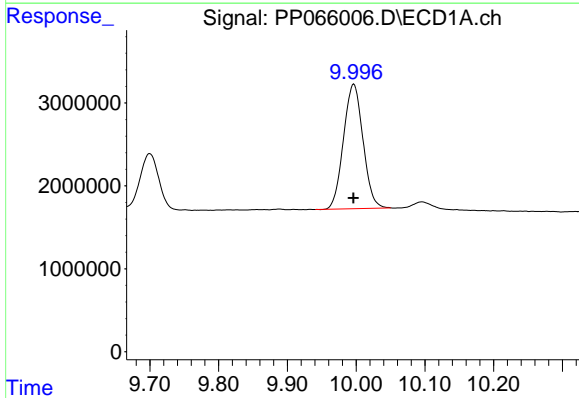
R.T.: 9.251 min
 Delta R.T.: -0.018 min
 Response: 44116071
 Conc: 364.11 ng/ml

Instrument :
 ECD_P
 ClientSampleId :
 AR1660CCC500



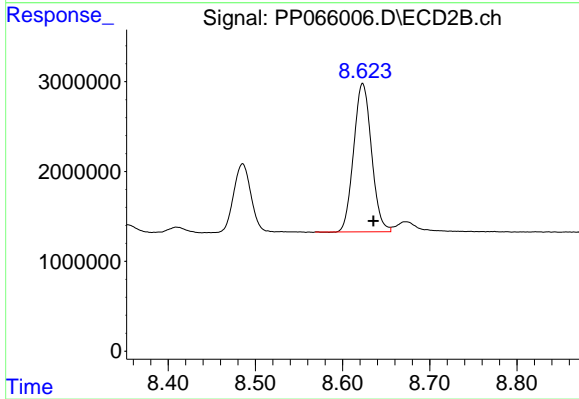
#39 AR-1262-4

R.T.: 8.092 min
 Delta R.T.: -0.011 min
 Response: 67038912
 Conc: 436.69 ng/ml



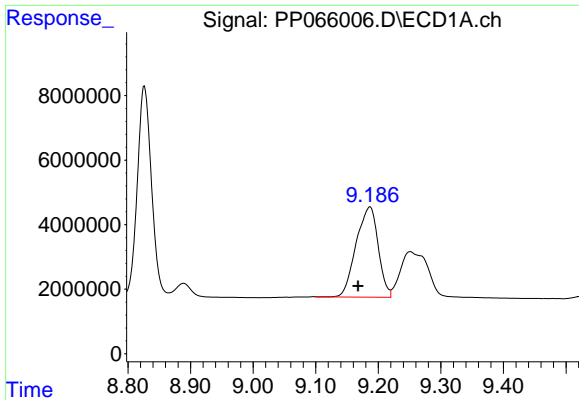
#40 AR-1262-5

R.T.: 9.997 min
 Delta R.T.: 0.000 min
 Response: 29605355
 Conc: 364.53 ng/ml



#40 AR-1262-5

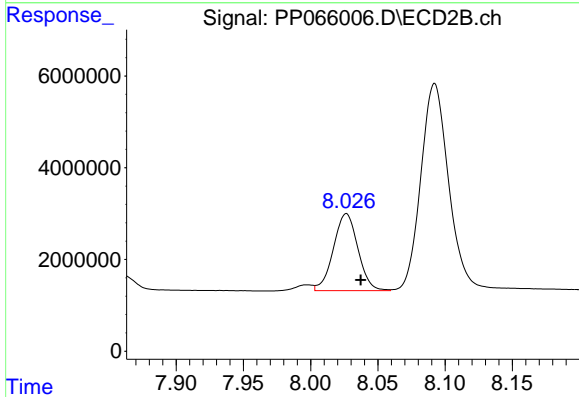
R.T.: 8.623 min
 Delta R.T.: -0.012 min
 Response: 23495064
 Conc: 334.53 ng/ml



#41 AR-1268-1

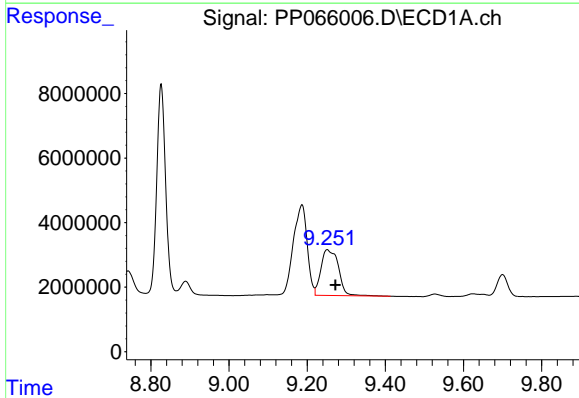
R.T.: 9.187 min
 Delta R.T.: 0.019 min
 Response: 68587372
 Conc: 270.03 ng/ml

Instrument :
 ECD_P
 ClientSampleId :
 AR1660CCC500



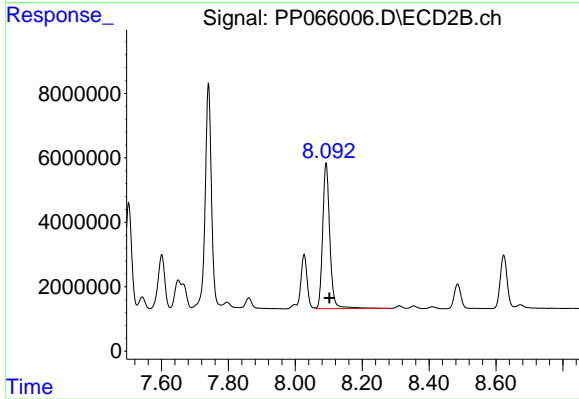
#41 AR-1268-1

R.T.: 8.027 min
 Delta R.T.: -0.011 min
 Response: 21259433
 Conc: 91.87 ng/ml



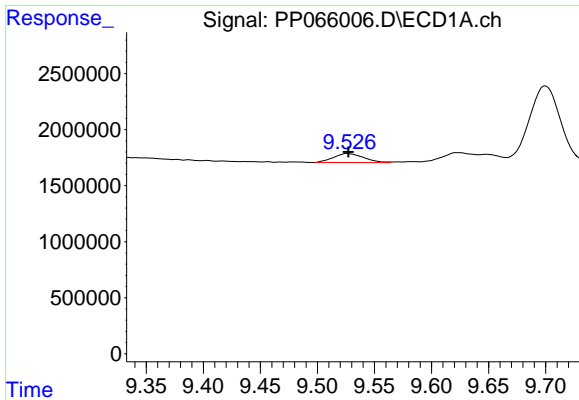
#42 AR-1268-2

R.T.: 9.251 min
 Delta R.T.: -0.021 min
 Response: 44116071
 Conc: 186.75 ng/ml



#42 AR-1268-2

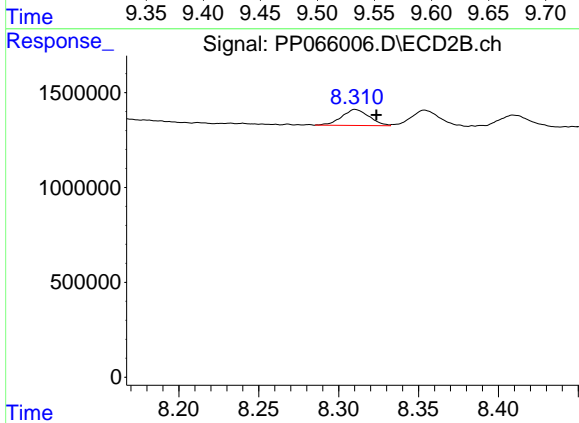
R.T.: 8.092 min
 Delta R.T.: -0.010 min
 Response: 67038912
 Conc: 319.43 ng/ml



#43 AR-1268-3

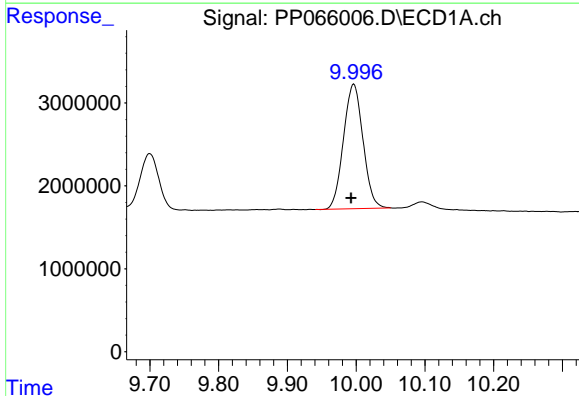
R.T.: 9.527 min
 Delta R.T.: 0.000 min
 Response: 1477212
 Conc: 7.27 ng/ml

Instrument :
 ECD_P
 ClientSampleId :
 AR1660CCC500



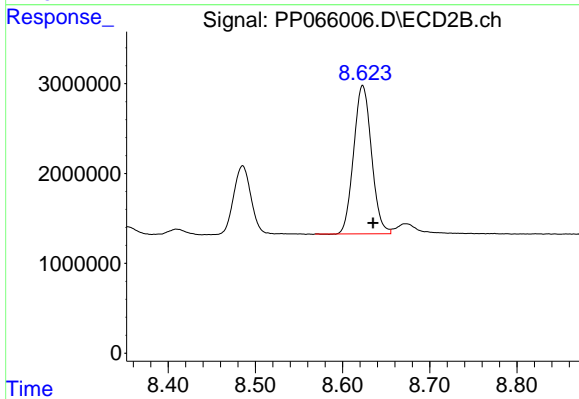
#43 AR-1268-3

R.T.: 8.311 min
 Delta R.T.: -0.013 min
 Response: 1011809
 Conc: 5.79 ng/ml



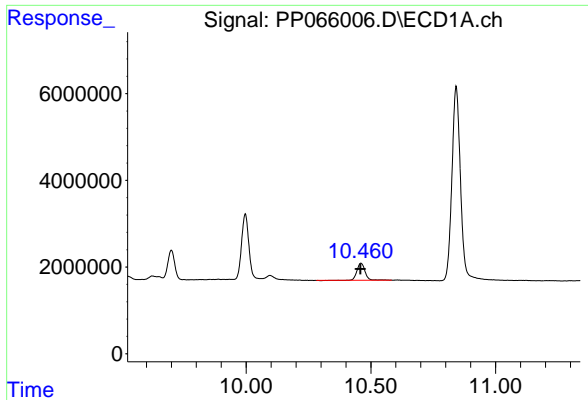
#44 AR-1268-4

R.T.: 9.997 min
 Delta R.T.: 0.004 min
 Response: 29605355
 Conc: 355.26 ng/ml



#44 AR-1268-4

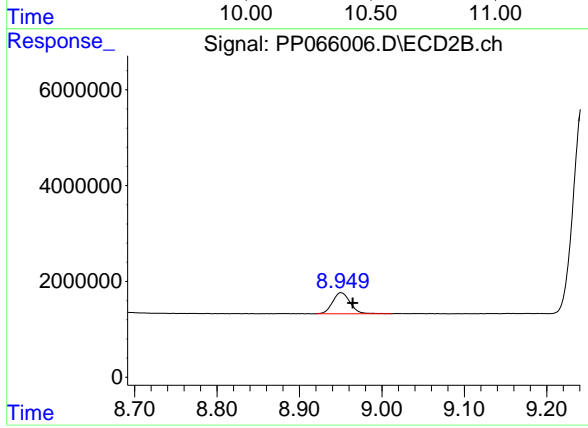
R.T.: 8.623 min
 Delta R.T.: -0.012 min
 Response: 23495064
 Conc: 309.89 ng/ml



#45 AR-1268-5

R.T.: 10.460 min
Delta R.T.: 0.002 min
Response: 8821077
Conc: 13.28 ng/ml

Instrument :
ECD_P
ClientSampleId :
AR1660CCC500



#45 AR-1268-5

R.T.: 8.950 min
Delta R.T.: -0.014 min
Response: 6499880
Conc: 12.41 ng/ml