

Data Path : Z:\pestpcbsrv\HPCHEM1\ECD_P\Data\PP062524\
 Data File : PP066034.D
 Signal(s) : Signal #1: ECD1A.ch Signal #2: ECD2B.ch
 Acq On : 25 Jun 2024 21:22
 Operator : YP\AJ
 Sample : P3048-12 10X
 Misc :
 ALS Vial : 33 Sample Multiplier: 1

Instrument :
 ECD_P
ClientSampleId :
 JEC425W-1-2

Manual Integrations
APPROVED
 Reviewed By :Yogesh Patel 06/26/2024
 Supervised By :Ankita Jodhani 06/26/2024

Integration File signal 1: autoint1.e
 Integration File signal 2: autoint2.e
 Quant Time: Jun 26 00:50:51 2024
 Quant Method : Z:\pestpcbsrv\HPCHEM1\ECD_P\methods\PP060524.M
 Quant Title : GC EXTRACTABLES
 QLast Update : Thu Jun 06 05:25:59 2024
 Response via : Initial Calibration
 Integrator: ChemStation

Volume Inj. : 2 µl
 Signal #1 Phase : ZB-MR1 Signal #2 Phase: ZB-MR2
 Signal #1 Info : 30Mx0.32mmx 0.50µ Signal #2 Info : 30M x 0.32mm x 0.25µm

Compound	RT#1	RT#2	Resp#1	Resp#2	ng/ml	ng/ml

System Monitoring Compounds						
1) SA Tetrachlo...	4.826	4.064	2023775	3621405	1.067m	1.297
2) SA Decachlor...	10.843	9.246	2838708	1900739	1.443	1.290

Target Compounds

 (f)=RT Delta > 1/2 Window (#)=Amounts differ by > 25% (m)=manual int.

Data Path : Z:\pestpcbsrv\HPCHEM1\ECD_P\Data\PP062524\
Data File : PP066034.D
Signal(s) : Signal #1: ECD1A.ch Signal #2: ECD2B.ch
Acq On : 25 Jun 2024 21:22
Operator : YP\AJ
Sample : P3048-12 10X
Misc :
ALS Vial : 33 Sample Multiplier: 1

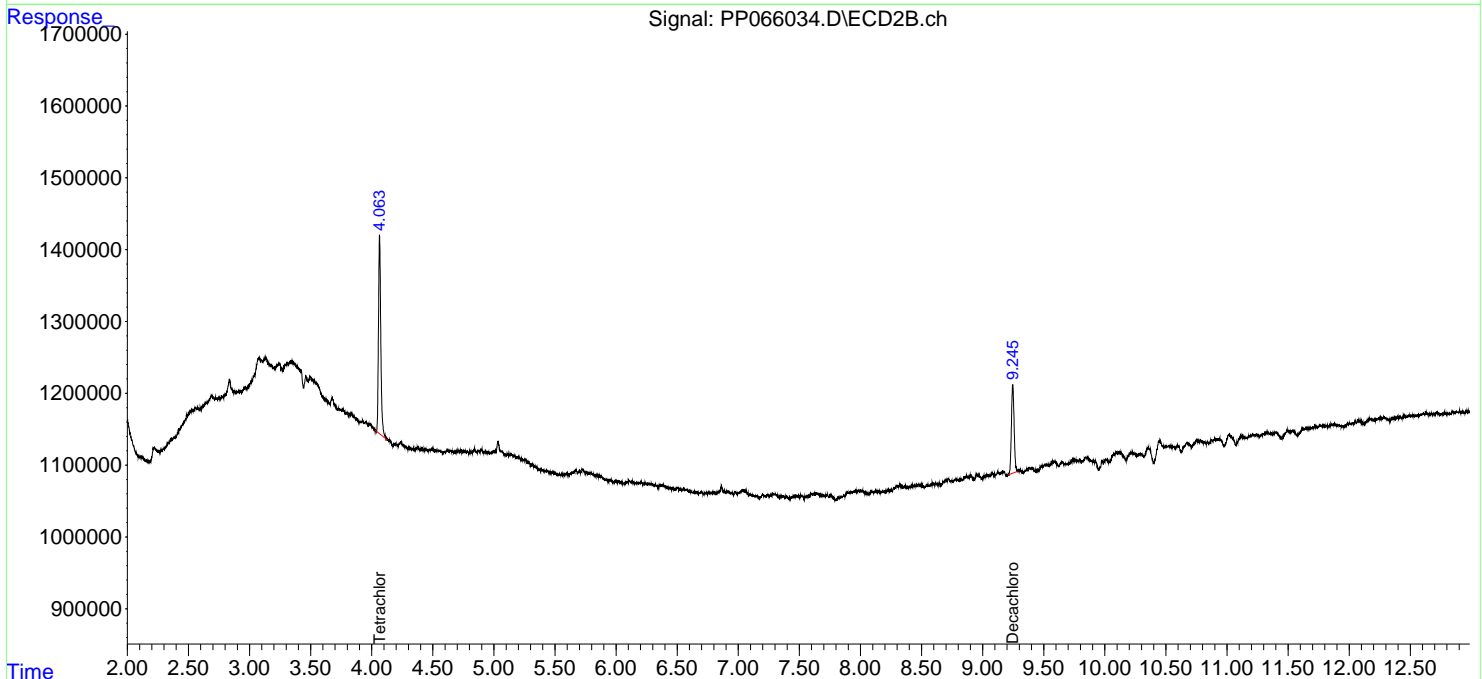
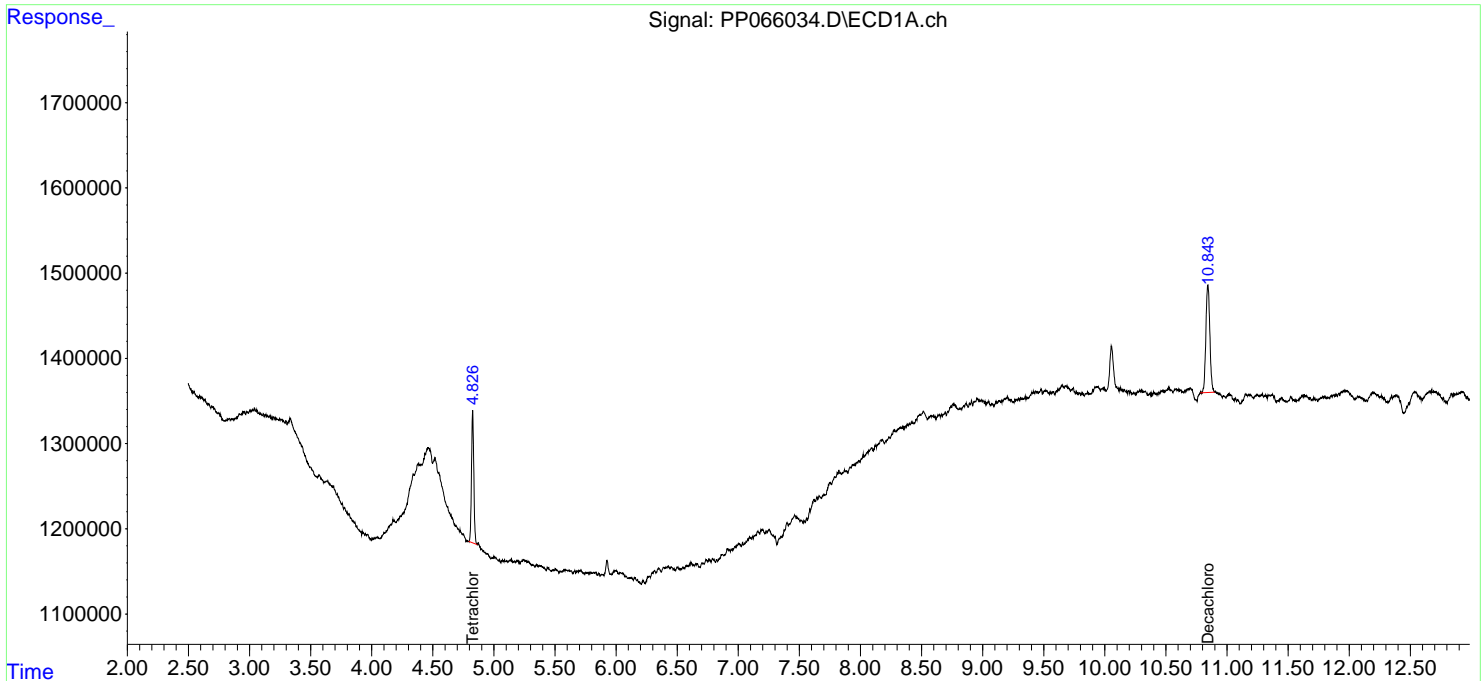
Instrument :
ECD_P
ClientSampleId :
JEC425W-1-2

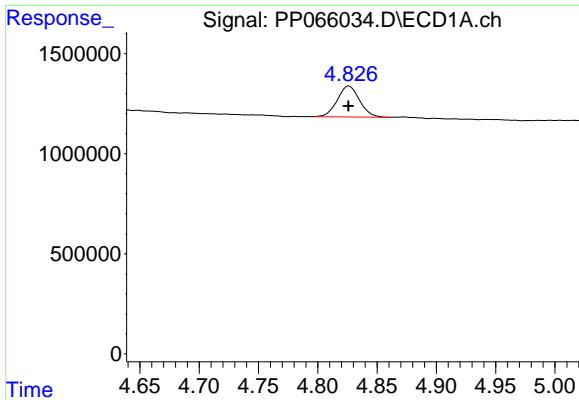
Manual Integrations
APPROVED

Reviewed By :Yogesh Patel 06/26/2024
Supervised By :Ankita Jodhani 06/26/2024

Integration File signal 1: autoint1.e
Integration File signal 2: autoint2.e
Quant Time: Jun 26 00:50:51 2024
Quant Method : Z:\pestpcbsrv\HPCHEM1\ECD_P\methods\PP060524.M
Quant Title : GC EXTRACTABLES
QLast Update : Thu Jun 06 05:25:59 2024
Response via : Initial Calibration
Integrator: ChemStation

Volume Inj. : 2 µl
Signal #1 Phase : ZB-MR1 Signal #2 Phase: ZB-MR2
Signal #1 Info : 30Mx0.32mmx 0.50µ Signal #2 Info : 30M x 0.32mm x 0.25µm



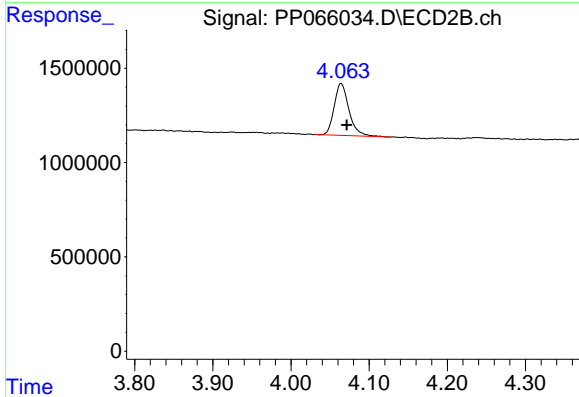


#1 Tetrachloro-m-xylene
 R.T.: 4.826 min
 Delta R.T.: 0.000 min
 Response: 2023775
 Conc: 1.07 ng/ml

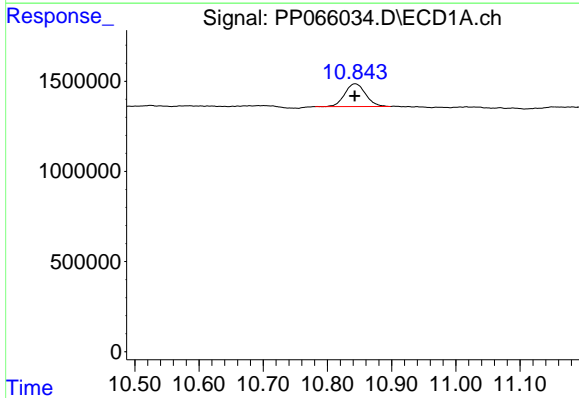
Instrument : ECD_P
 ClientSampleId : JEC425W-1-2

Manual Integrations
 APPROVED

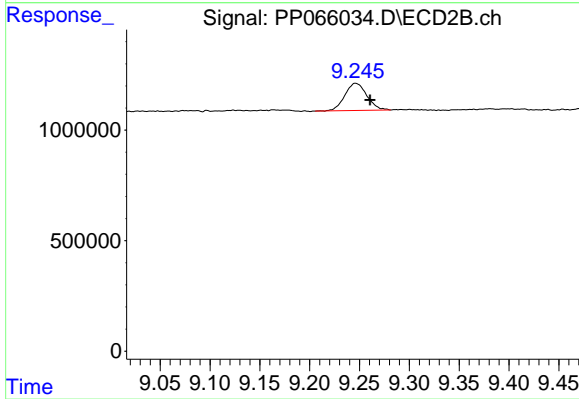
Reviewed By :Yogesh Patel 06/26/2024
 Supervised By :Ankita Jodhani 06/26/2024



#1 Tetrachloro-m-xylene
 R.T.: 4.064 min
 Delta R.T.: -0.007 min
 Response: 3621405
 Conc: 1.30 ng/ml



#2 Decachlorobiphenyl
 R.T.: 10.843 min
 Delta R.T.: 0.000 min
 Response: 2838708
 Conc: 1.44 ng/ml



#2 Decachlorobiphenyl
 R.T.: 9.246 min
 Delta R.T.: -0.014 min
 Response: 1900739
 Conc: 1.29 ng/ml