

Data Path : Z:\pestpcbsrv\HPCHEM1\ECD\_P\Data\PP062525\  
 Data File : PP073257.D  
 Signal(s) : Signal #1: ECD1A.ch Signal #2: ECD2B.ch  
 Acq On : 25 Jun 2025 19:16  
 Operator : YP\AJ  
 Sample : Q2387-02  
 Misc :  
 ALS Vial : 24 Sample Multiplier: 1

Instrument :  
 ECD\_P  
 ClientSampleId :  
 AUD-25-102

Integration File signal 1: autoint1.e  
 Integration File signal 2: autoint2.e  
 Quant Time: Jun 26 01:53:23 2025  
 Quant Method : Z:\pestpcbsrv\HPCHEM1\ECD\_P\methods\PP061725.M  
 Quant Title : GC EXTRACTABLES  
 QLast Update : Wed Jun 18 08:17:15 2025  
 Response via : Initial Calibration  
 Integrator: ChemStation

Volume Inj. : 2 µl  
 Signal #1 Phase : ZB-MR1 Signal #2 Phase: ZB-MR2  
 Signal #1 Info : 30Mx0.32mmx 0.50µ Signal #2 Info : 30M x 0.32mm x 0.25µm

Compound	RT#1	RT#2	Resp#1	Resp#2	ng/ml	ng/ml
System Monitoring Compounds						
1) SA Tetrachlo...	4.491	3.786	37086274	34094151	17.570	18.922
2) SA Decachlor...	10.181	8.791	27679624	24439556	16.197	18.311
Target Compounds						
3) L1 AR-1016-1	5.640	4.865	1937048	3274333	26.655	47.649 #
4) L1 AR-1016-2	5.667	4.865	2147984	3274333	20.650	32.536 #
5) L1 AR-1016-3	5.727	5.060	888958	1051878	13.603	19.224 #
6) L1 AR-1016-4	5.822	5.101	1819984	150.5E6	34.812	3377.317 #
7) L1 AR-1016-5	6.115	5.315	125.2E6	140.2E6	2503.982	2536.700
8) L2 AR-1221-1	4.693	4.008	621559	324770	25.206	12.086 #
9) L2 AR-1221-2	4.797	4.087	730708	1731148	36.211	85.762 #
10) L2 AR-1221-3	4.857	4.160	1022237	759108	16.608	12.925
11) L3 AR-1232-1	4.857	4.160	1022237	759108	21.770	16.660
12) L3 AR-1232-2	5.342f	4.865	957459	3274333	42.801	70.781 #
13) L3 AR-1232-3	5.667	5.060	2147984	1051878	41.630	42.833
14) L3 AR-1232-4	5.822	5.142	1819984	46666558	70.514	2157.974 #
15) L3 AR-1232-5	5.912	5.315	131.8E6	140.2E6	3694.740	6134.797 #
16) L4 AR-1242-1	5.640	4.865	1937048	3274333	33.147	59.297 #
17) L4 AR-1242-2	5.667	4.865	2147984	3274333	24.817	41.194 #
18) L4 AR-1242-3	5.727	5.060	888958	1051878	16.866	24.290 #
19) L4 AR-1242-4	5.822	5.142	1819984	46666558	41.403	1124.391 #
20) L4 AR-1242-5	6.555	5.666	337.8E6	1634.4E6	6815.303	31080.178 #
21) L5 AR-1248-1	5.640	4.865	1937048	3274333	40.721	75.116 #
22) L5 AR-1248-2	5.912	5.101	131.8E6	150.5E6	2250.894	2567.738
23) L5 AR-1248-3	6.115	5.142	125.2E6	46666558	1918.976	770.785 #
24) L5 AR-1248-4	6.513	5.315	566.2E6	140.2E6	6656.315	2002.709 #
25) L5 AR-1248-5	6.555	5.706	337.8E6	217.4E6	4035.745	3059.958
26) L6 AR-1254-1	6.489	5.666	980.5E6	1634.4E6	11649.012	14905.591 #
27) L6 AR-1254-2	6.705	5.814	2238.4E6	1932.9E6	17849.735	20443.731
28) L6 AR-1254-3	7.069	6.216	2874.1E6	3356.8E6	21904.403	22750.526
29) L6 AR-1254-4	7.350	6.444	2131.5E6	1761.0E6	17794.171	18135.653
30) L6 AR-1254-5	7.766	6.860	997.9E6	1144.1E6	8734.268	8803.653
31) L7 AR-1260-1	7.232	6.347	1061.2E6	1554.1E6	12029.713	16405.232 #
32) L7 AR-1260-2	7.485	6.534	963.7E6	813.2E6	7091.952	6984.449
33) L7 AR-1260-3	7.827	6.685	122.9E6	944.6E6	1077.066	9068.676 #
34) L7 AR-1260-4	8.052	7.155	196.0E6	25178177	1902.536	286.968 #
35) L7 AR-1260-5	8.383	7.396	16774066	10972947	69.711	51.420 #
36) L8 AR-1262-1	8.052	6.930	196.0E6	112.9E6	1324.441	781.532 #
37) L8 AR-1262-2	8.383	7.155	16774066	25178177	53.004	205.989 #
38) L8 AR-1262-3	8.709	7.679	4814770	270283	22.502	2.398 #
39) L8 AR-1262-4	8.755	7.738	714712	6887543	4.535	37.564 #
40) L8 AR-1262-5	9.441	8.232	730307	197604	6.529	2.282 #
41) L9 AR-1268-1	8.709	7.679	4814770	270283	13.463	0.941 #

Data Path : Z:\pestpcbsrv\HPCHEM1\ECD\_P\Data\PP062525\  
 Data File : PP073257.D  
 Signal(s) : Signal #1: ECD1A.ch Signal #2: ECD2B.ch  
 Acq On : 25 Jun 2025 19:16  
 Operator : YP\AJ  
 Sample : Q2387-02  
 Misc :  
 ALS Vial : 24 Sample Multiplier: 1

**Instrument :**  
 ECD\_P  
**ClientSampleId :**  
 AUD-25-102

Integration File signal 1: autoint1.e  
 Integration File signal 2: autoint2.e  
 Quant Time: Jun 26 01:53:23 2025  
 Quant Method : Z:\pestpcbsrv\HPCHEM1\ECD\_P\methods\PP061725.M  
 Quant Title : GC EXTRACTABLES  
 QLast Update : Wed Jun 18 08:17:15 2025  
 Response via : Initial Calibration  
 Integrator: ChemStation

Volume Inj. : 2 µl  
 Signal #1 Phase : ZB-MR1 Signal #2 Phase: ZB-MR2  
 Signal #1 Info : 30Mx0.32mmx 0.50µ Signal #2 Info : 30M x 0.32mm x 0.25µm

	Compound	RT#1	RT#2	Resp#1	Resp#2	ng/ml	ng/ml
42)	L9 AR-1268-2	8.755f	7.738	714712	6887543	2.343	26.788 #
43)	L9 AR-1268-3	9.020	7.947	636204	105455	2.396	0.488 #
44)	L9 AR-1268-4	9.441	8.232	730307	197604	6.241	2.098 #
45)	L9 AR-1268-5	9.846	8.540	265115	280271	0.358	0.484 #

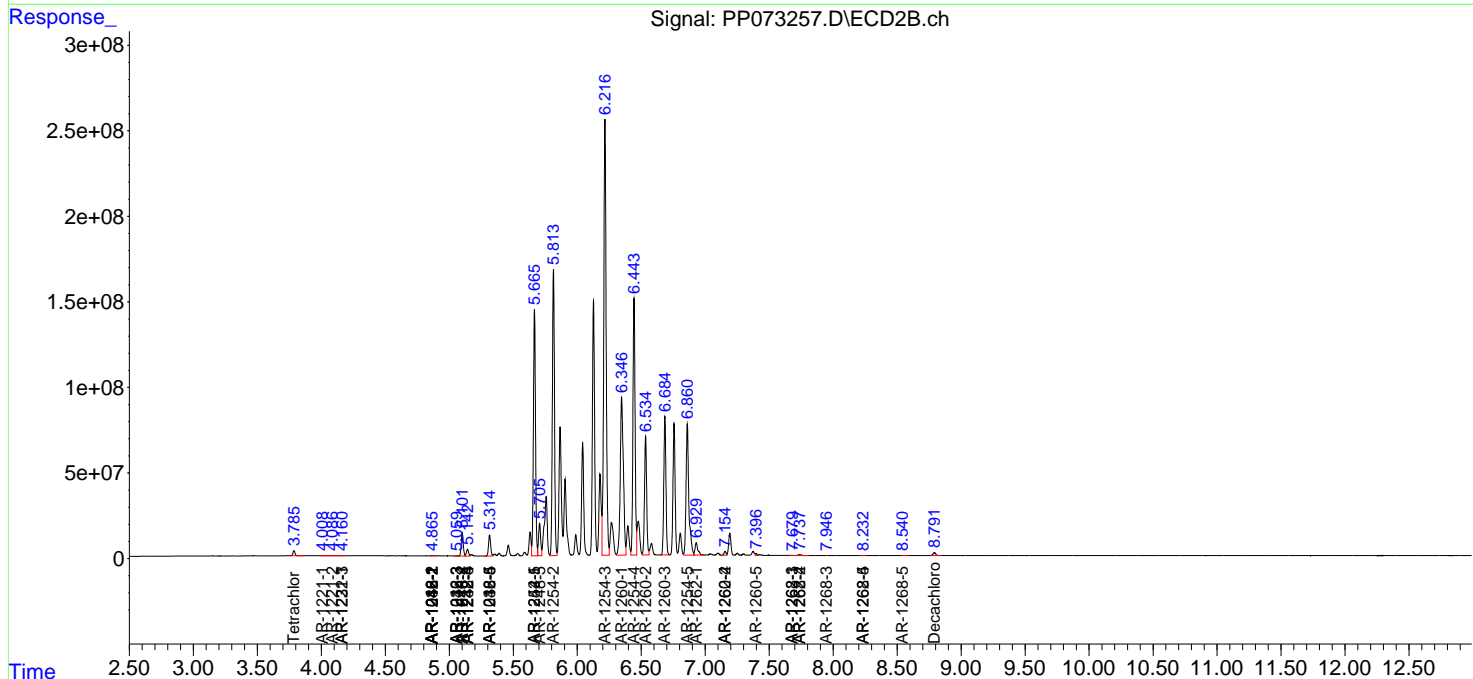
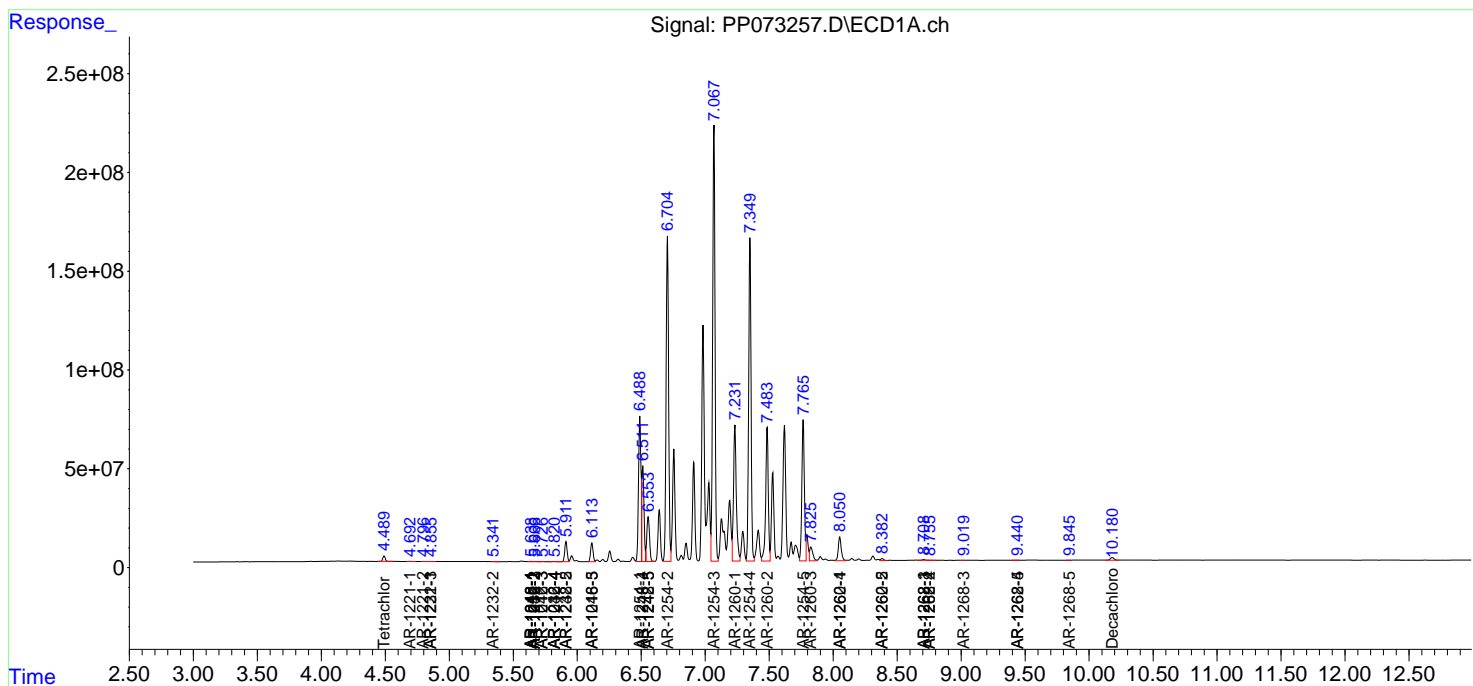
(f)=RT Delta > 1/2 Window (#)=Amounts differ by > 25% (m)=manual int.

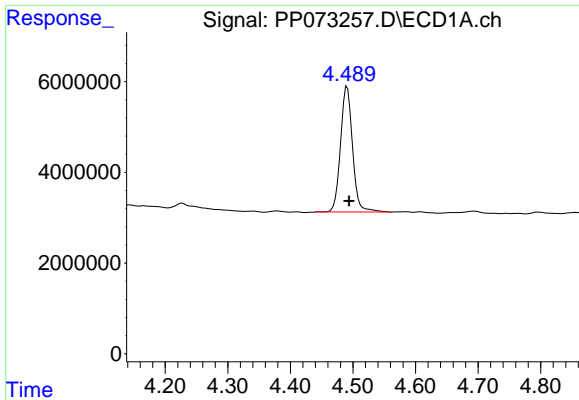
Data Path : Z:\pestpcbsrv\HPCHEM1\ECD\_P\Data\PP062525\  
 Data File : PP073257.D  
 Signal(s) : Signal #1: ECD1A.ch Signal #2: ECD2B.ch  
 Acq On : 25 Jun 2025 19:16  
 Operator : YP\AJ  
 Sample : Q2387-02  
 Misc :  
 ALS Vial : 24 Sample Multiplier: 1

Instrument :  
 ECD\_P  
 ClientSampleId :  
 AUD-25-102

Integration File signal 1: autoint1.e  
 Integration File signal 2: autoint2.e  
 Quant Time: Jun 26 01:53:23 2025  
 Quant Method : Z:\pestpcbsrv\HPCHEM1\ECD\_P\methods\PP061725.M  
 Quant Title : GC EXTRACTABLES  
 QLast Update : Wed Jun 18 08:17:15 2025  
 Response via : Initial Calibration  
 Integrator: ChemStation

Volume Inj. : 2 µl  
 Signal #1 Phase : ZB-MR1 Signal #2 Phase: ZB-MR2  
 Signal #1 Info : 30Mx0.32mmx 0.50µ Signal #2 Info : 30M x 0.32mm x 0.25µm

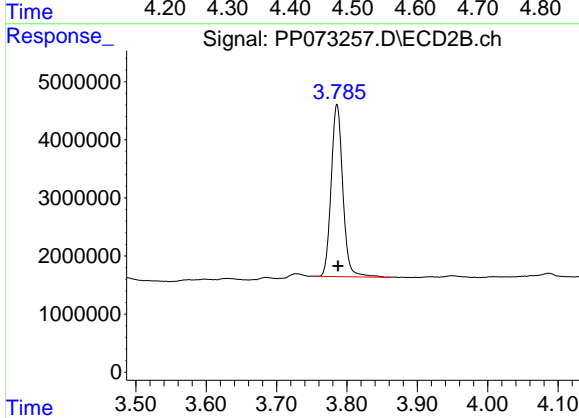




#1 Tetrachloro-m-xylene

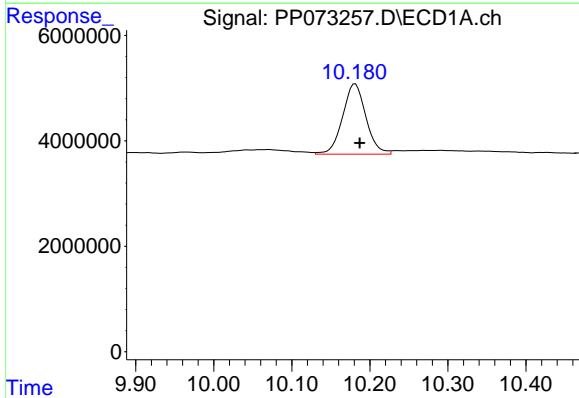
R.T.: 4.491 min  
Delta R.T.: -0.003 min  
Response: 37086274  
Conc: 17.57 ng/ml

Instrument :  
ECD\_P  
ClientSampleId :  
AUD-25-102



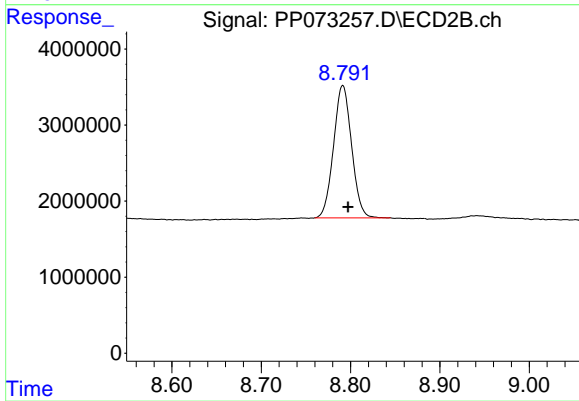
#1 Tetrachloro-m-xylene

R.T.: 3.786 min  
Delta R.T.: -0.002 min  
Response: 34094151  
Conc: 18.92 ng/ml



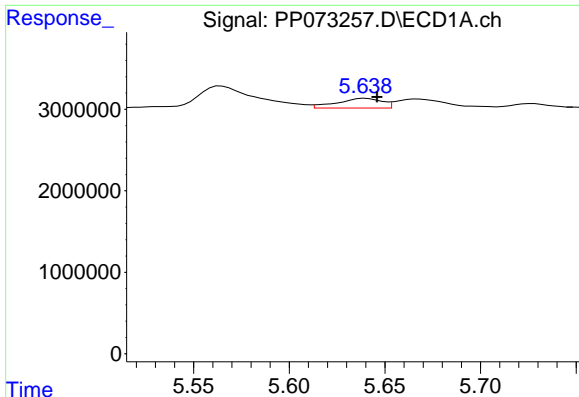
#2 Decachlorobiphenyl

R.T.: 10.181 min  
Delta R.T.: -0.006 min  
Response: 27679624  
Conc: 16.20 ng/ml



#2 Decachlorobiphenyl

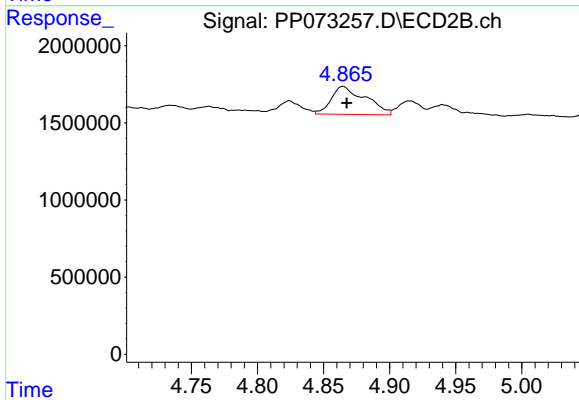
R.T.: 8.791 min  
Delta R.T.: -0.006 min  
Response: 24439556  
Conc: 18.31 ng/ml



#3 AR-1016-1

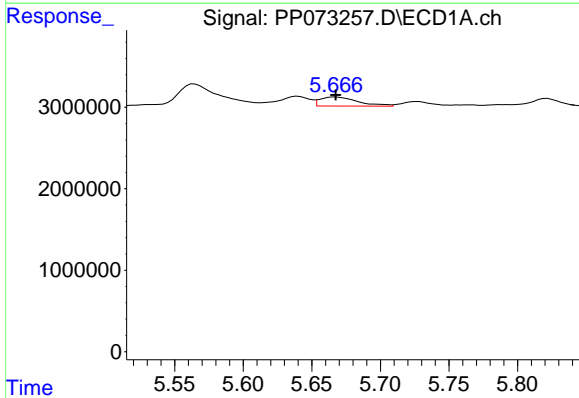
R.T.: 5.640 min  
 Delta R.T.: -0.006 min  
 Response: 1937048  
 Conc: 26.65 ng/ml

Instrument :  
 ECD\_P  
 ClientSampleId :  
 AUD-25-102



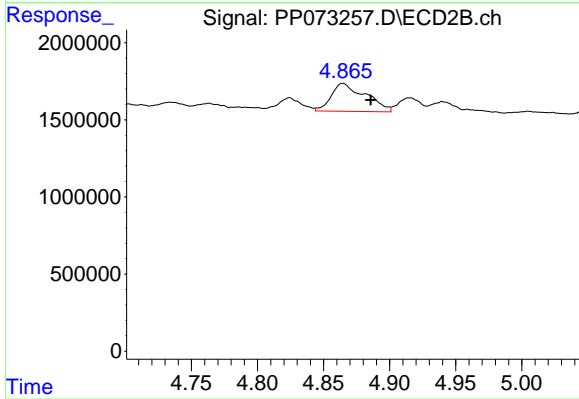
#3 AR-1016-1

R.T.: 4.865 min  
 Delta R.T.: -0.003 min  
 Response: 3274333  
 Conc: 47.65 ng/ml



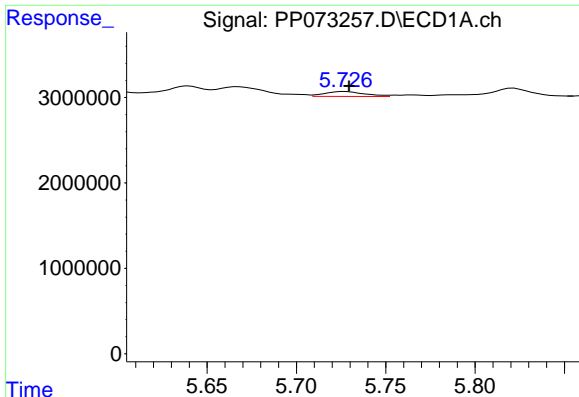
#4 AR-1016-2

R.T.: 5.667 min  
 Delta R.T.: 0.000 min  
 Response: 2147984  
 Conc: 20.65 ng/ml



#4 AR-1016-2

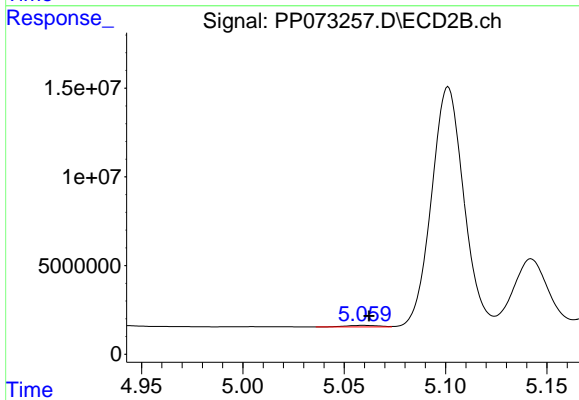
R.T.: 4.865 min  
 Delta R.T.: -0.021 min  
 Response: 3274333  
 Conc: 32.54 ng/ml



#5 AR-1016-3

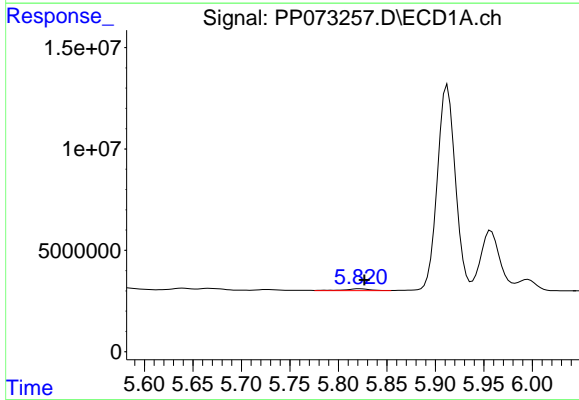
R.T.: 5.727 min  
 Delta R.T.: -0.002 min  
 Response: 888958  
 Conc: 13.60 ng/ml

Instrument :  
 ECD\_P  
 ClientSampleId :  
 AUD-25-102



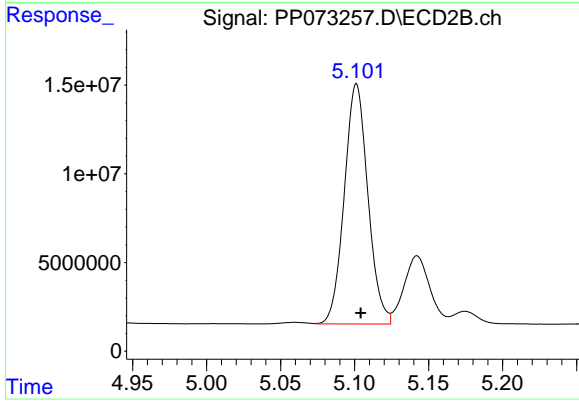
#5 AR-1016-3

R.T.: 5.060 min  
 Delta R.T.: -0.003 min  
 Response: 1051878  
 Conc: 19.22 ng/ml



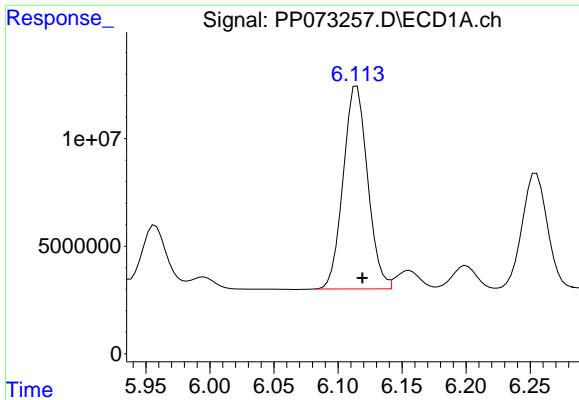
#6 AR-1016-4

R.T.: 5.822 min  
 Delta R.T.: -0.005 min  
 Response: 1819984  
 Conc: 34.81 ng/ml



#6 AR-1016-4

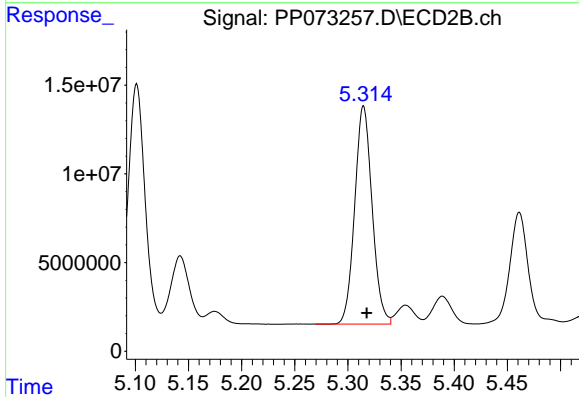
R.T.: 5.101 min  
 Delta R.T.: -0.003 min  
 Response: 150458160  
 Conc: 3377.32 ng/ml



#7 AR-1016-5

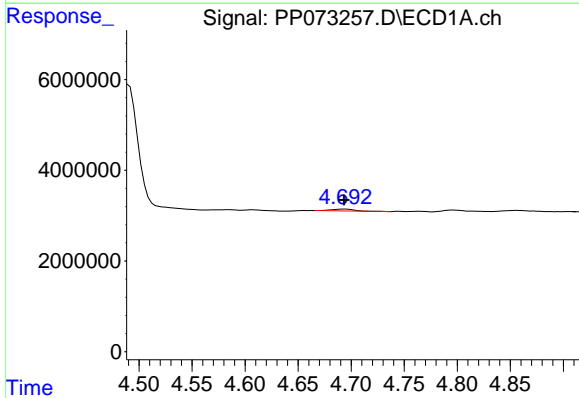
R.T.: 6.115 min  
 Delta R.T.: -0.004 min  
 Response: 125211848  
 Conc: 2503.98 ng/ml

Instrument :  
 ECD\_P  
 ClientSampleId :  
 AUD-25-102



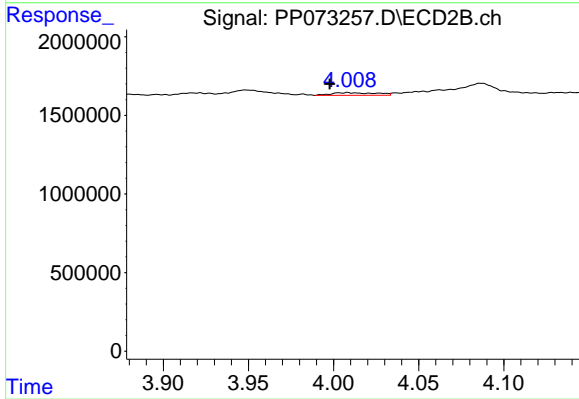
#7 AR-1016-5

R.T.: 5.315 min  
 Delta R.T.: -0.003 min  
 Response: 140234612  
 Conc: 2536.70 ng/ml



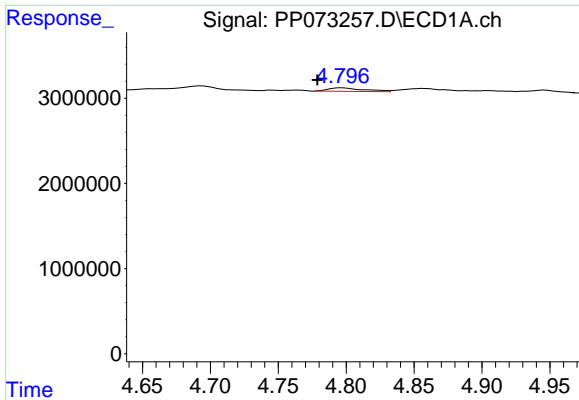
#8 AR-1221-1

R.T.: 4.693 min  
 Delta R.T.: 0.000 min  
 Response: 621559  
 Conc: 25.21 ng/ml



#8 AR-1221-1

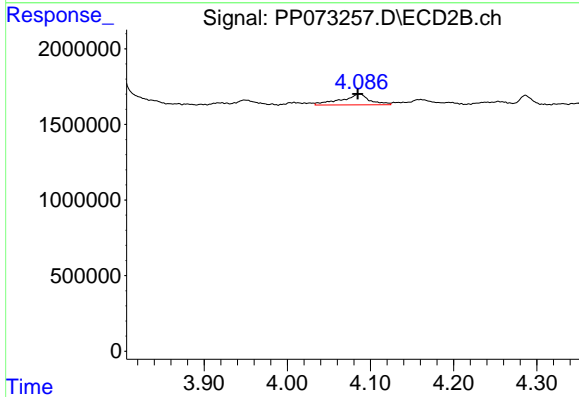
R.T.: 4.008 min  
 Delta R.T.: 0.011 min  
 Response: 324770  
 Conc: 12.09 ng/ml



#9 AR-1221-2

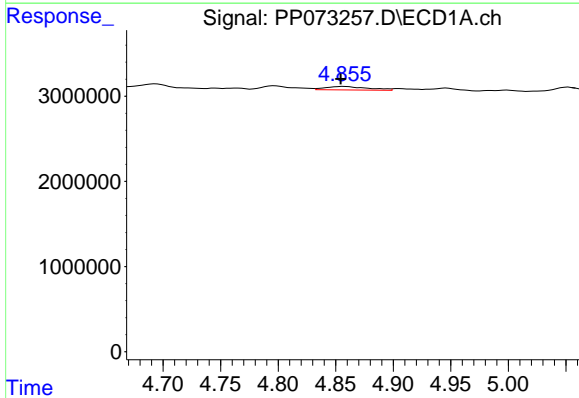
R.T.: 4.797 min  
 Delta R.T.: 0.018 min  
 Response: 730708  
 Conc: 36.21 ng/ml

Instrument :  
 ECD\_P  
 ClientSampleId :  
 AUD-25-102



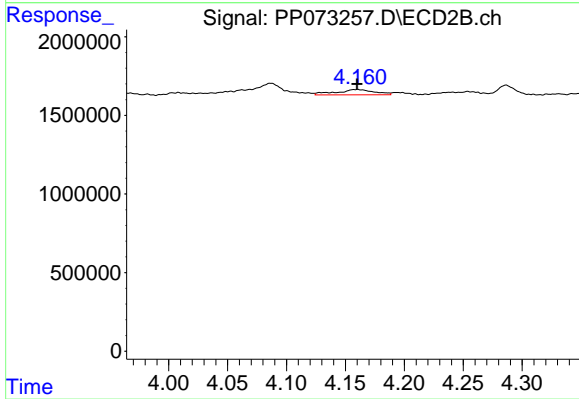
#9 AR-1221-2

R.T.: 4.087 min  
 Delta R.T.: 0.002 min  
 Response: 1731148  
 Conc: 85.76 ng/ml



#10 AR-1221-3

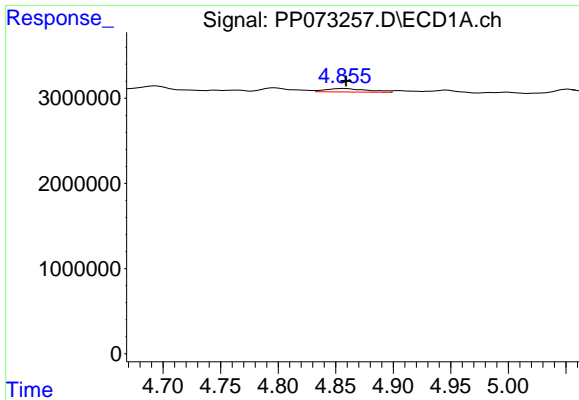
R.T.: 4.857 min  
 Delta R.T.: 0.003 min  
 Response: 1022237  
 Conc: 16.61 ng/ml



#10 AR-1221-3

R.T.: 4.160 min  
 Delta R.T.: 0.000 min  
 Response: 759108  
 Conc: 12.92 ng/ml

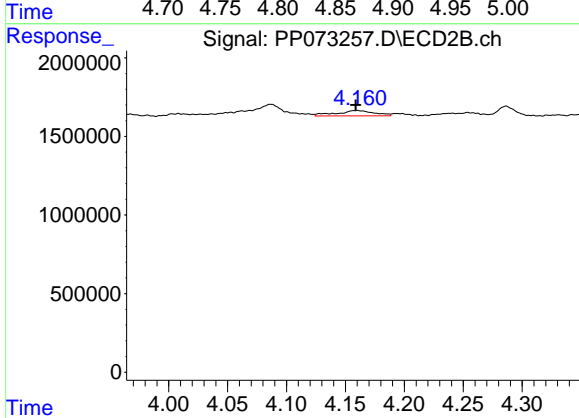




#11 AR-1232-1

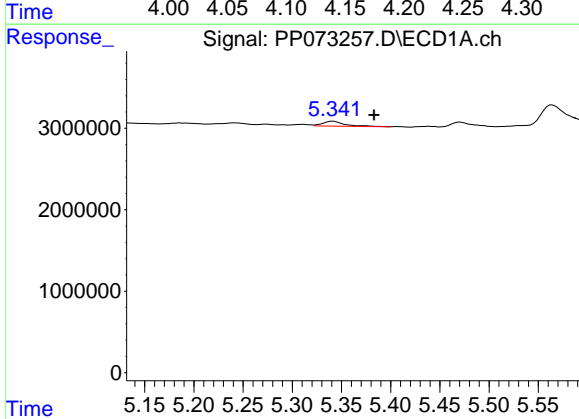
R.T.: 4.857 min  
 Delta R.T.: -0.002 min  
 Response: 1022237  
 Conc: 21.77 ng/ml

Instrument :  
 ECD\_P  
 ClientSampleId :  
 AUD-25-102



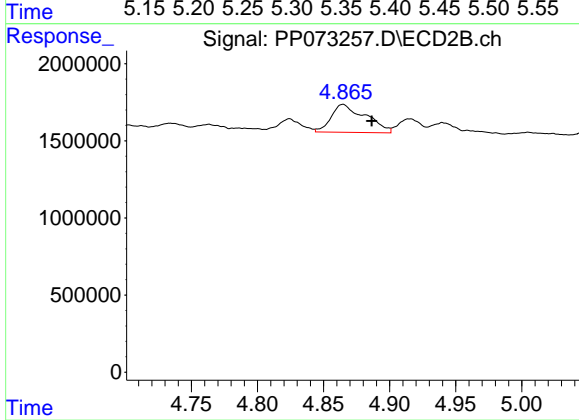
#11 AR-1232-1

R.T.: 4.160 min  
 Delta R.T.: 0.001 min  
 Response: 759108  
 Conc: 16.66 ng/ml



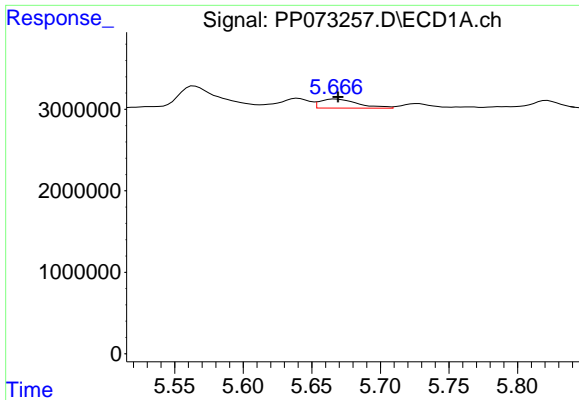
#12 AR-1232-2

R.T.: 5.342 min  
 Delta R.T.: -0.041 min  
 Response: 957459  
 Conc: 42.80 ng/ml



#12 AR-1232-2

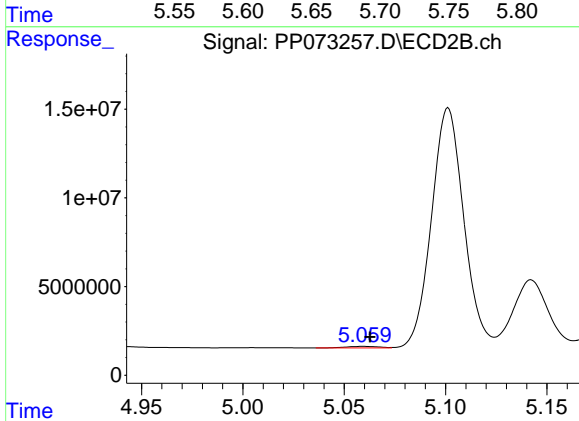
R.T.: 4.865 min  
 Delta R.T.: -0.022 min  
 Response: 3274333  
 Conc: 70.78 ng/ml



#13 AR-1232-3

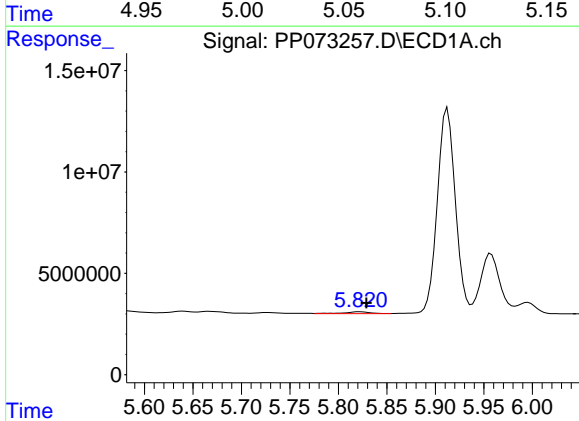
R.T.: 5.667 min  
 Delta R.T.: -0.002 min  
 Response: 2147984  
 Conc: 41.63 ng/ml

Instrument :  
 ECD\_P  
 ClientSampleId :  
 AUD-25-102



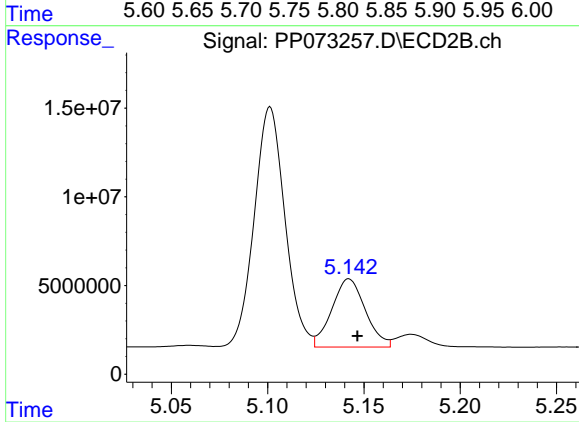
#13 AR-1232-3

R.T.: 5.060 min  
 Delta R.T.: -0.003 min  
 Response: 1051878  
 Conc: 42.83 ng/ml



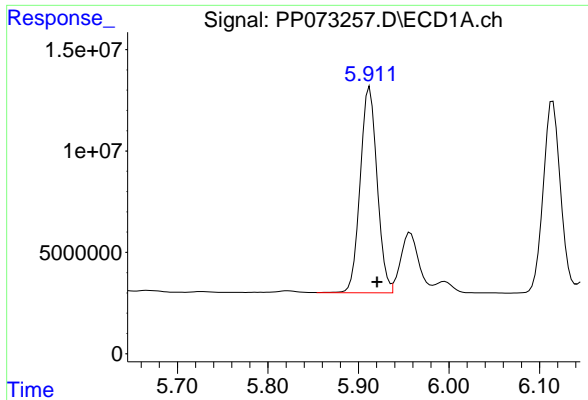
#14 AR-1232-4

R.T.: 5.822 min  
 Delta R.T.: -0.007 min  
 Response: 1819984  
 Conc: 70.51 ng/ml



#14 AR-1232-4

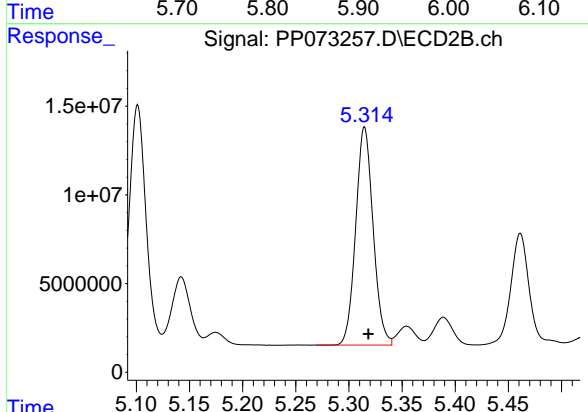
R.T.: 5.142 min  
 Delta R.T.: -0.004 min  
 Response: 46666558  
 Conc: 2157.97 ng/ml



#15 AR-1232-5

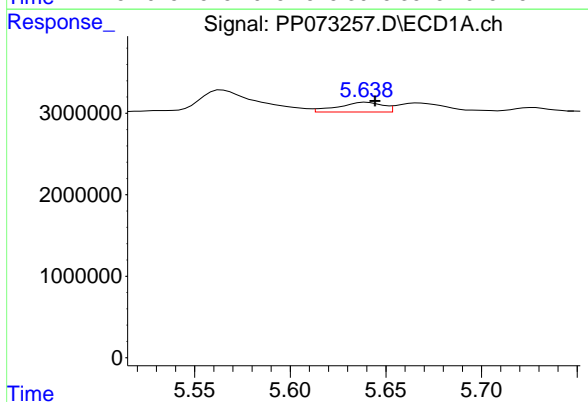
R.T.: 5.912 min  
 Delta R.T.: -0.008 min  
 Response: 131792033  
 Conc: 3694.74 ng/m

Instrument :  
 ECD\_P  
 ClientSampleId :  
 AUD-25-102



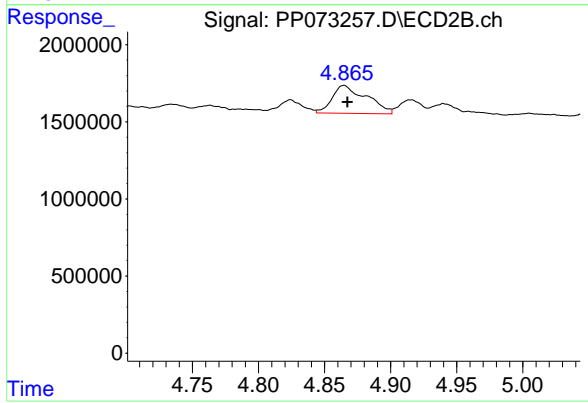
#15 AR-1232-5

R.T.: 5.315 min  
 Delta R.T.: -0.004 min  
 Response: 140234612  
 Conc: 6134.80 ng/ml



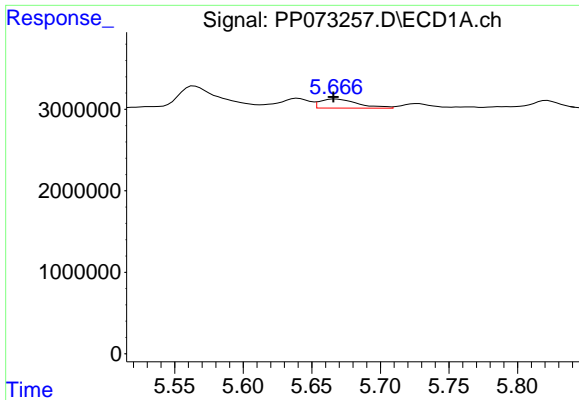
#16 AR-1242-1

R.T.: 5.640 min  
 Delta R.T.: -0.004 min  
 Response: 1937048  
 Conc: 33.15 ng/ml



#16 AR-1242-1

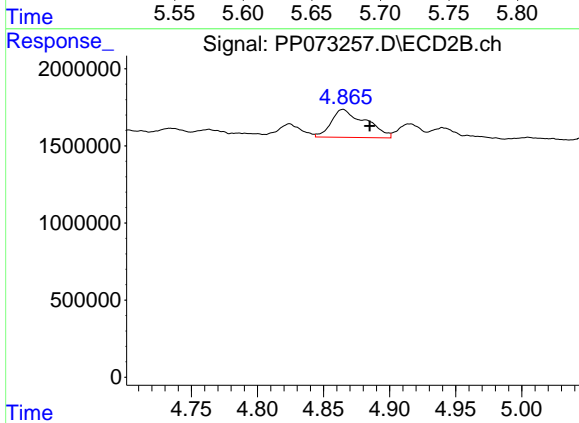
R.T.: 4.865 min  
 Delta R.T.: -0.003 min  
 Response: 3274333  
 Conc: 59.30 ng/ml



#17 AR-1242-2

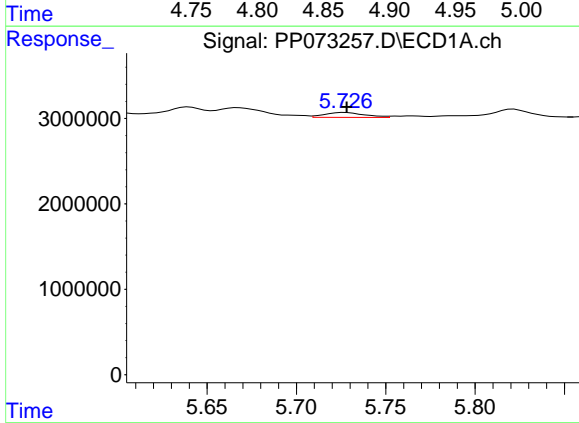
R.T.: 5.667 min  
 Delta R.T.: 0.002 min  
 Response: 2147984  
 Conc: 24.82 ng/ml

Instrument :  
 ECD\_P  
 ClientSampleId :  
 AUD-25-102



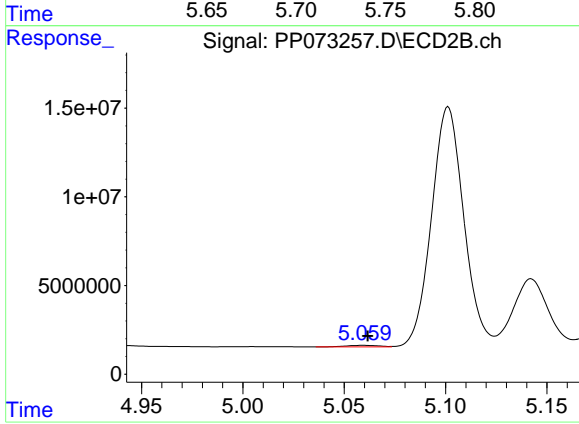
#17 AR-1242-2

R.T.: 4.865 min  
 Delta R.T.: -0.020 min  
 Response: 3274333  
 Conc: 41.19 ng/ml



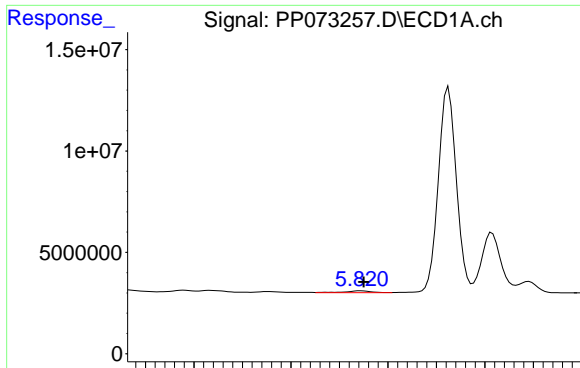
#18 AR-1242-3

R.T.: 5.727 min  
 Delta R.T.: 0.000 min  
 Response: 888958  
 Conc: 16.87 ng/ml



#18 AR-1242-3

R.T.: 5.060 min  
 Delta R.T.: -0.002 min  
 Response: 1051878  
 Conc: 24.29 ng/ml

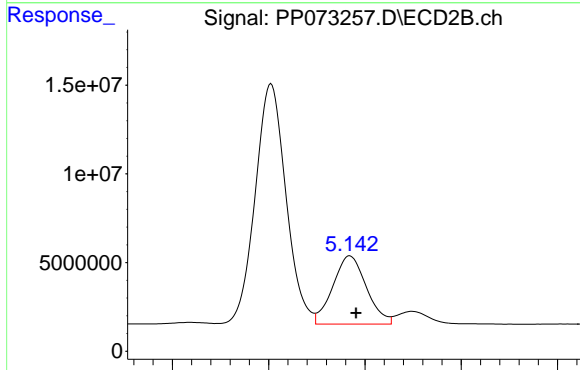


#19 AR-1242-4

R.T.: 5.822 min  
 Delta R.T.: -0.003 min  
 Response: 1819984  
 Conc: 41.40 ng/ml

Instrument :  
 ECD\_P  
 ClientSampleId :  
 AUD-25-102

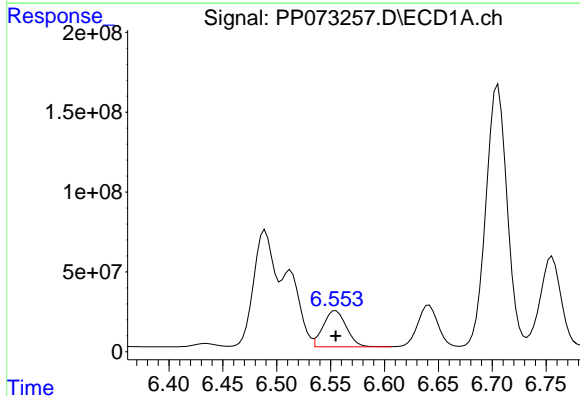
Time 5.60 5.65 5.70 5.75 5.80 5.85 5.90 5.95 6.00



#19 AR-1242-4

R.T.: 5.142 min  
 Delta R.T.: -0.003 min  
 Response: 46666558  
 Conc: 1124.39 ng/ml

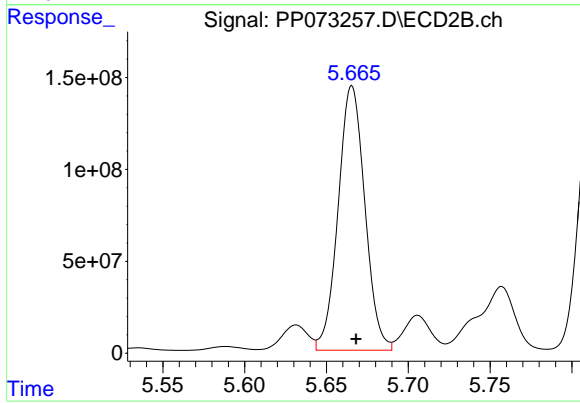
Time 5.05 5.10 5.15 5.20 5.25



#20 AR-1242-5

R.T.: 6.555 min  
 Delta R.T.: 0.000 min  
 Response: 337764247  
 Conc: 6815.30 ng/ml

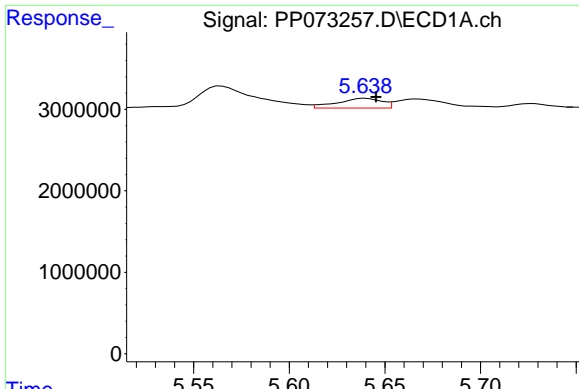
Time 6.40 6.45 6.50 6.55 6.60 6.65 6.70 6.75



#20 AR-1242-5

R.T.: 5.666 min  
 Delta R.T.: -0.002 min  
 Response: 1634398510  
 Conc: 31080.18 ng/ml

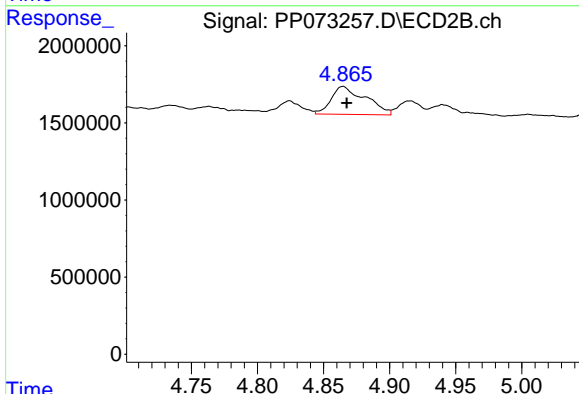
Time 5.55 5.60 5.65 5.70 5.75



#21 AR-1248-1

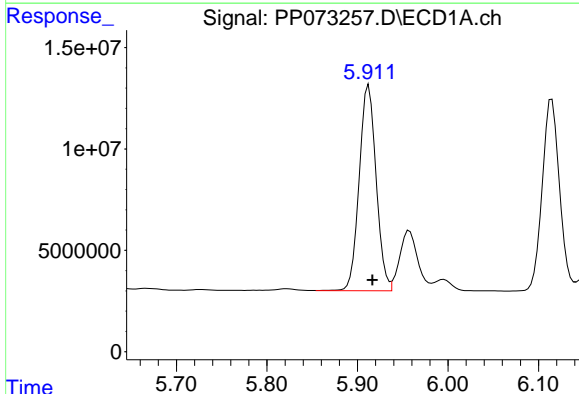
R.T.: 5.640 min  
 Delta R.T.: -0.005 min  
 Response: 1937048  
 Conc: 40.72 ng/ml

Instrument :  
 ECD\_P  
 ClientSampleId :  
 AUD-25-102



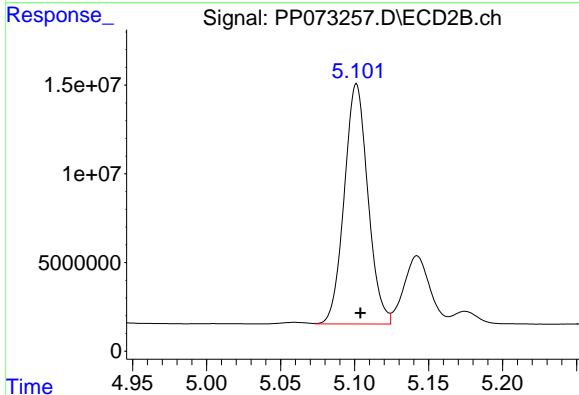
#21 AR-1248-1

R.T.: 4.865 min  
 Delta R.T.: -0.003 min  
 Response: 3274333  
 Conc: 75.12 ng/ml



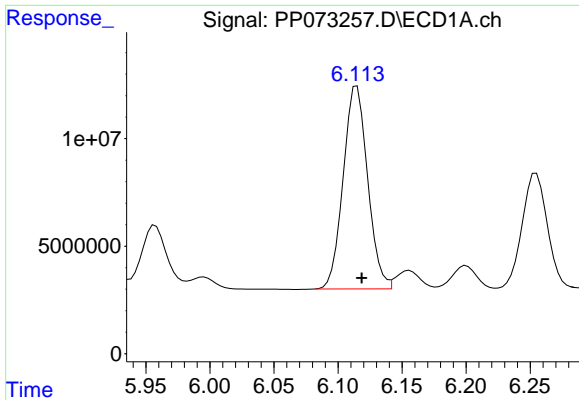
#22 AR-1248-2

R.T.: 5.912 min  
 Delta R.T.: -0.004 min  
 Response: 131792033  
 Conc: 2250.89 ng/ml



#22 AR-1248-2

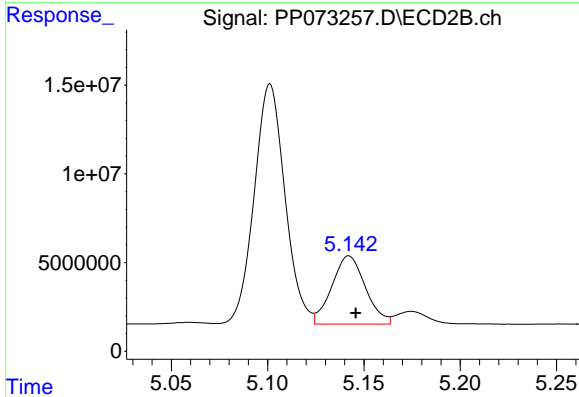
R.T.: 5.101 min  
 Delta R.T.: -0.003 min  
 Response: 150458160  
 Conc: 2567.74 ng/ml



#23 AR-1248-3

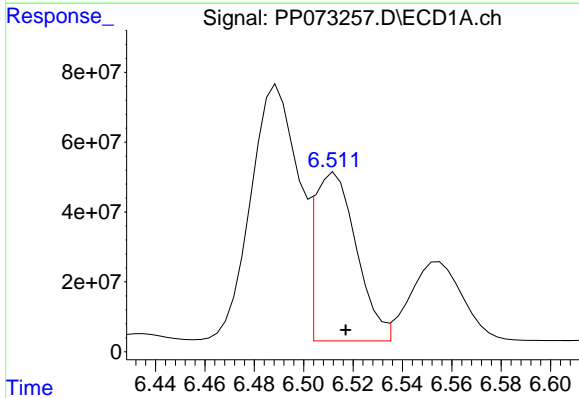
R.T.: 6.115 min  
 Delta R.T.: -0.004 min  
 Response: 125211848  
 Conc: 1918.98 ng/ml

Instrument :  
 ECD\_P  
 ClientSampleId :  
 AUD-25-102



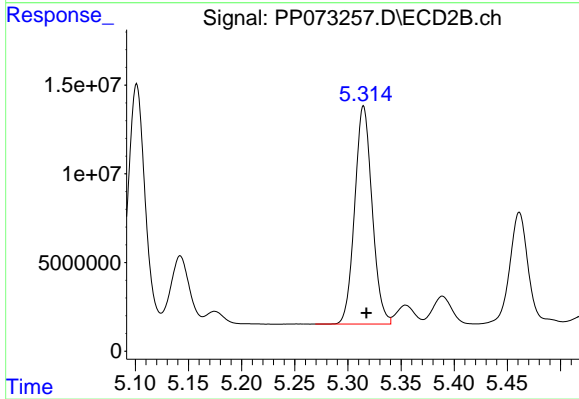
#23 AR-1248-3

R.T.: 5.142 min  
 Delta R.T.: -0.004 min  
 Response: 46666558  
 Conc: 770.79 ng/ml



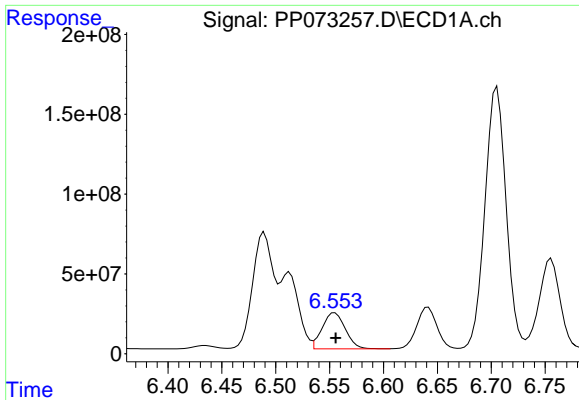
#24 AR-1248-4

R.T.: 6.513 min  
 Delta R.T.: -0.004 min  
 Response: 566216100  
 Conc: 6656.31 ng/ml



#24 AR-1248-4

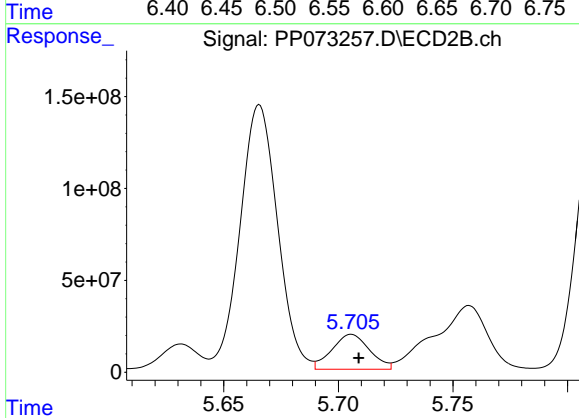
R.T.: 5.315 min  
 Delta R.T.: -0.003 min  
 Response: 140234612  
 Conc: 2002.71 ng/ml



#25 AR-1248-5

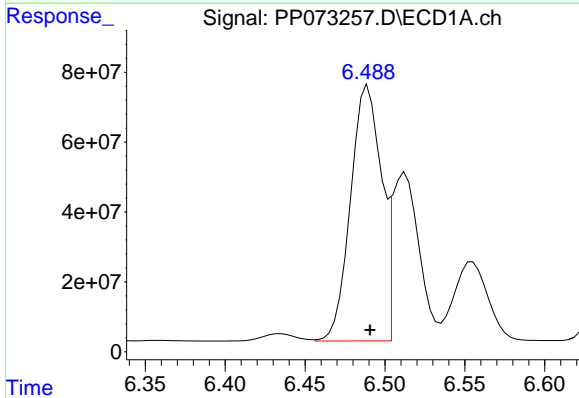
R.T.: 6.555 min  
 Delta R.T.: 0.000 min  
 Response: 337764247  
 Conc: 4035.74 ng/ml

Instrument :  
 ECD\_P  
 ClientSampleId :  
 AUD-25-102



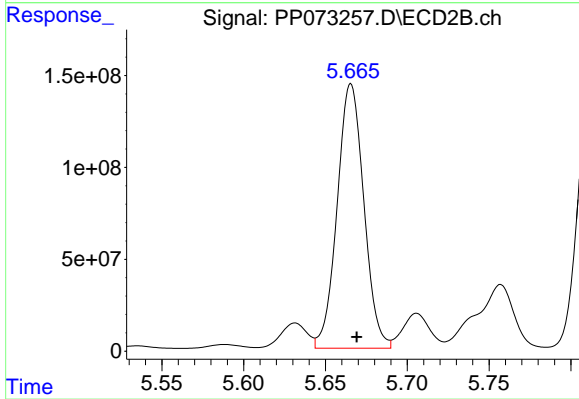
#25 AR-1248-5

R.T.: 5.706 min  
 Delta R.T.: -0.003 min  
 Response: 217354614  
 Conc: 3059.96 ng/ml



#26 AR-1254-1

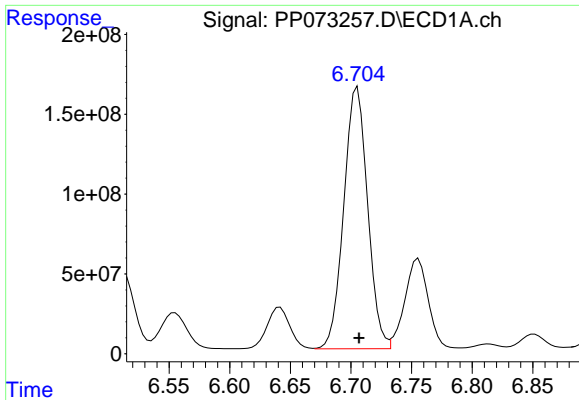
R.T.: 6.489 min  
 Delta R.T.: -0.001 min  
 Response: 980542689  
 Conc: 11649.01 ng/ml



#26 AR-1254-1

R.T.: 5.666 min  
 Delta R.T.: -0.004 min  
 Response: 1634398510  
 Conc: 14905.59 ng/ml

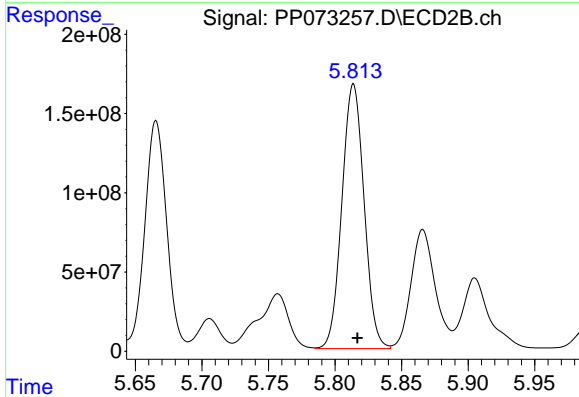




#27 AR-1254-2

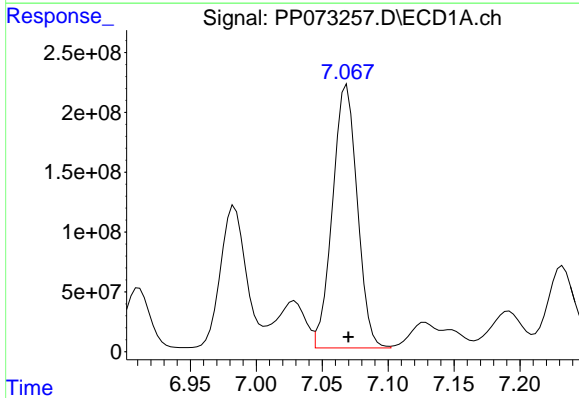
R.T.: 6.705 min  
 Delta R.T.: -0.001 min  
 Response: 2238372369  
 Conc: 17849.74 ng/ml

Instrument :  
 ECD\_P  
 ClientSampleId :  
 AUD-25-102



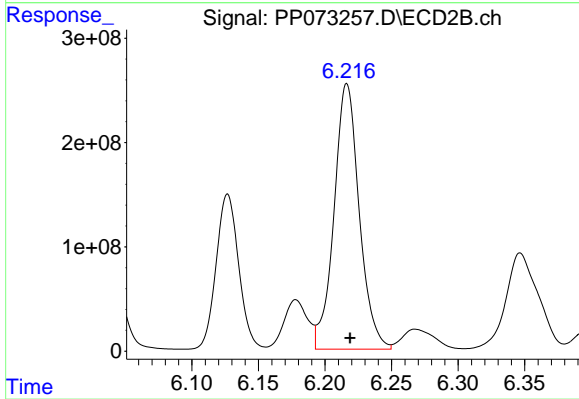
#27 AR-1254-2

R.T.: 5.814 min  
 Delta R.T.: -0.003 min  
 Response: 1932878941  
 Conc: 20443.73 ng/ml



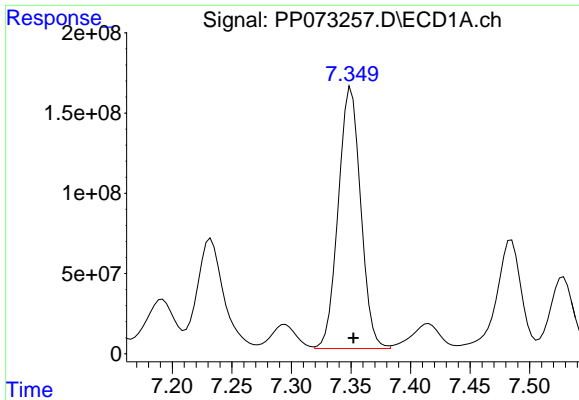
#28 AR-1254-3

R.T.: 7.069 min  
 Delta R.T.: -0.001 min  
 Response: 2874098046  
 Conc: 21904.40 ng/ml



#28 AR-1254-3

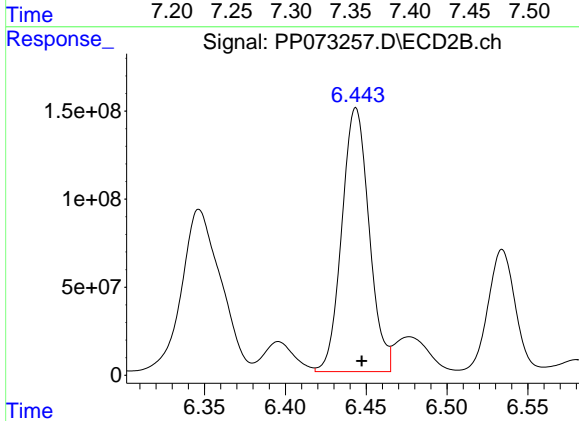
R.T.: 6.216 min  
 Delta R.T.: -0.002 min  
 Response: 3356777106  
 Conc: 22750.53 ng/ml



#29 AR-1254-4

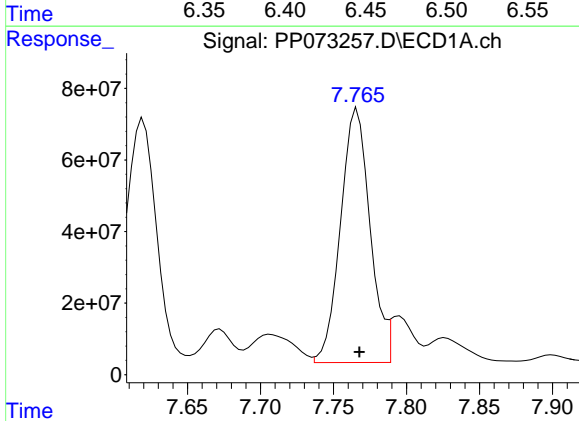
R.T.: 7.350 min  
 Delta R.T.: -0.002 min  
 Response: 2131456243  
 Conc: 17794.17 ng/ml

Instrument :  
 ECD\_P  
 ClientSampleId :  
 AUD-25-102



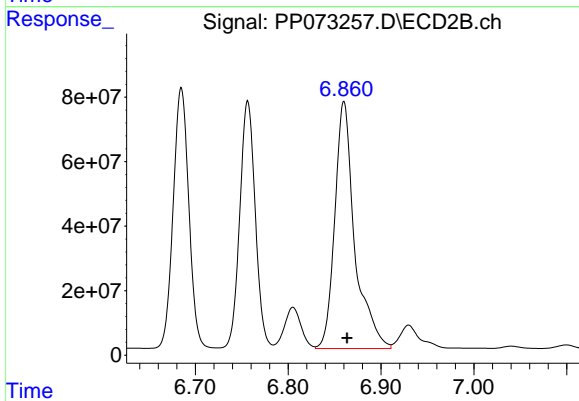
#29 AR-1254-4

R.T.: 6.444 min  
 Delta R.T.: -0.004 min  
 Response: 1760990988  
 Conc: 18135.65 ng/ml



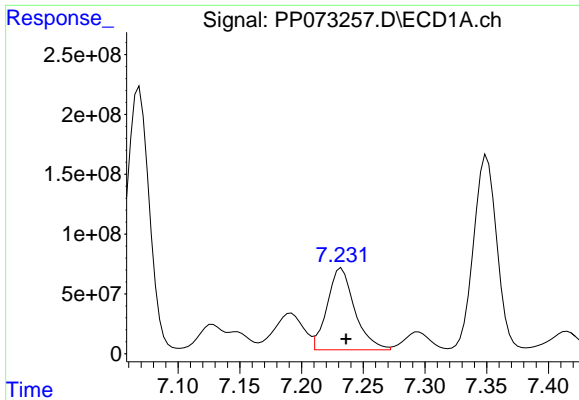
#30 AR-1254-5

R.T.: 7.766 min  
 Delta R.T.: -0.001 min  
 Response: 997946538  
 Conc: 8734.27 ng/ml



#30 AR-1254-5

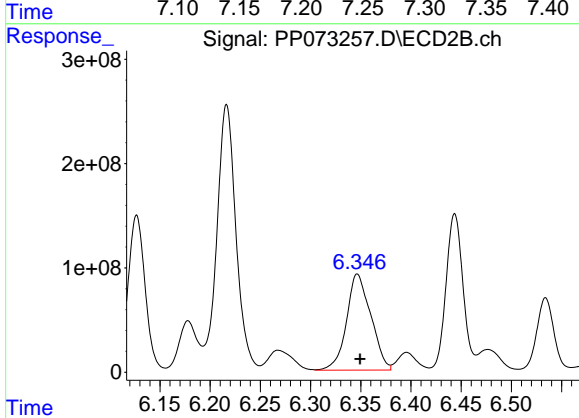
R.T.: 6.860 min  
 Delta R.T.: -0.003 min  
 Response: 1144146357  
 Conc: 8803.65 ng/ml



#31 AR-1260-1

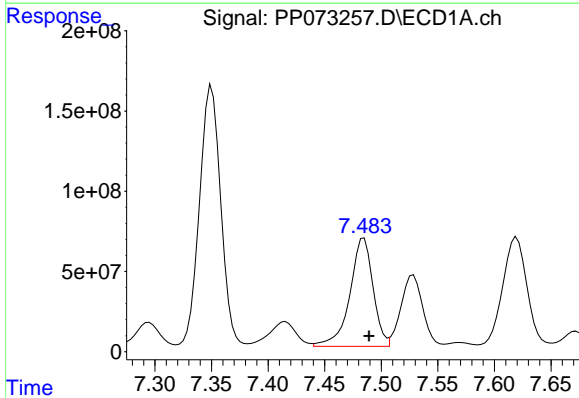
R.T.: 7.232 min  
 Delta R.T.: -0.004 min  
 Response: 1061181397  
 Conc: 12029.71 ng/ml

Instrument :  
 ECD\_P  
 ClientSampleId :  
 AUD-25-102



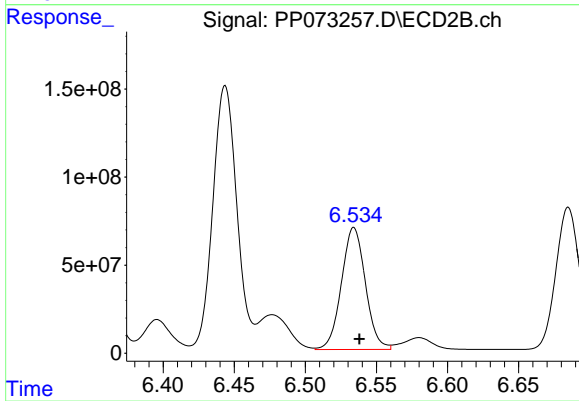
#31 AR-1260-1

R.T.: 6.347 min  
 Delta R.T.: -0.003 min  
 Response: 1554077630  
 Conc: 16405.23 ng/ml



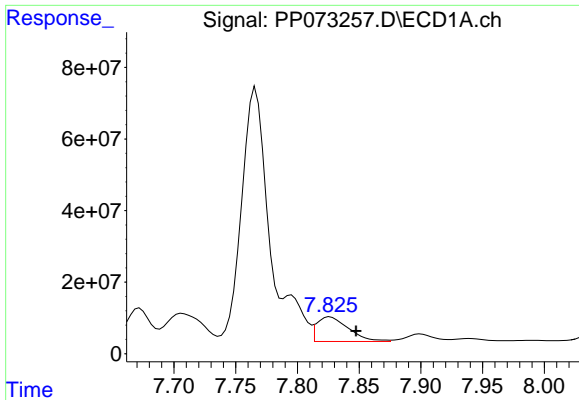
#32 AR-1260-2

R.T.: 7.485 min  
 Delta R.T.: -0.005 min  
 Response: 963680837  
 Conc: 7091.95 ng/ml



#32 AR-1260-2

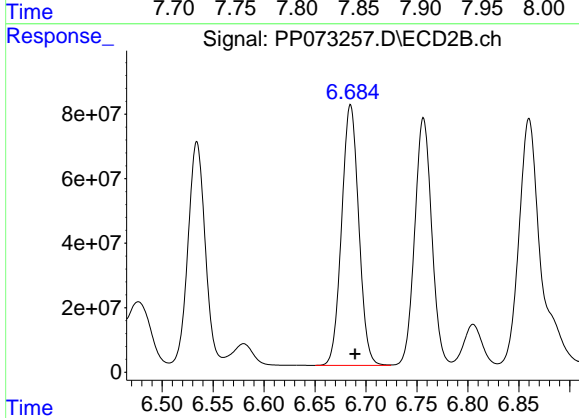
R.T.: 6.534 min  
 Delta R.T.: -0.004 min  
 Response: 813243249  
 Conc: 6984.45 ng/ml



#33 AR-1260-3

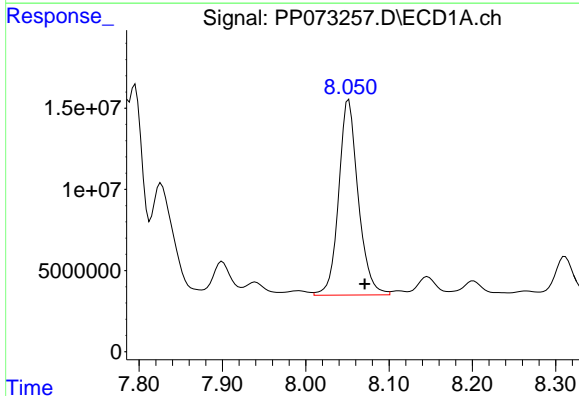
R.T.: 7.827 min  
 Delta R.T.: -0.021 min  
 Response: 122949435  
 Conc: 1077.07 ng/ml

Instrument :  
 ECD\_P  
 ClientSampleId :  
 AUD-25-102



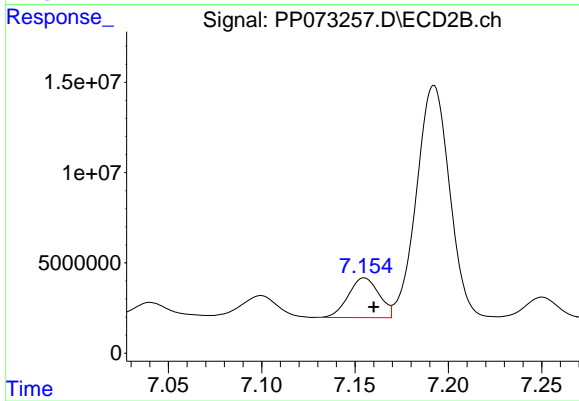
#33 AR-1260-3

R.T.: 6.685 min  
 Delta R.T.: -0.005 min  
 Response: 944602836  
 Conc: 9068.68 ng/ml



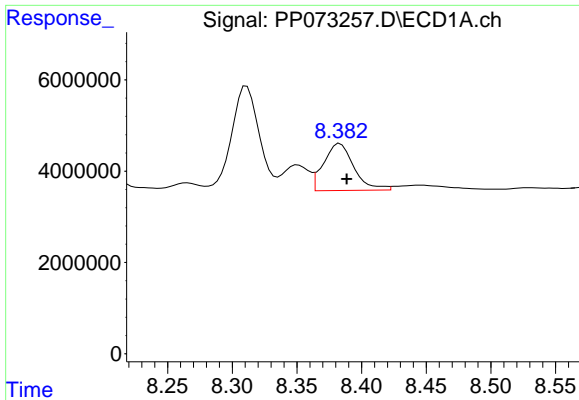
#34 AR-1260-4

R.T.: 8.052 min  
 Delta R.T.: -0.019 min  
 Response: 196047843  
 Conc: 1902.54 ng/ml



#34 AR-1260-4

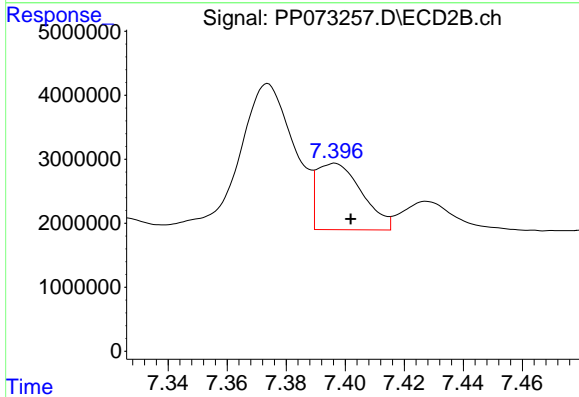
R.T.: 7.155 min  
 Delta R.T.: -0.005 min  
 Response: 25178177  
 Conc: 286.97 ng/ml



#35 AR-1260-5

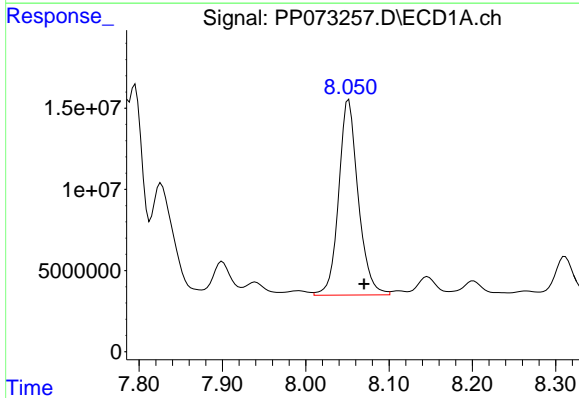
R.T.: 8.383 min  
 Delta R.T.: -0.005 min  
 Response: 16774066  
 Conc: 69.71 ng/ml

Instrument :  
 ECD\_P  
 ClientSampleId :  
 AUD-25-102



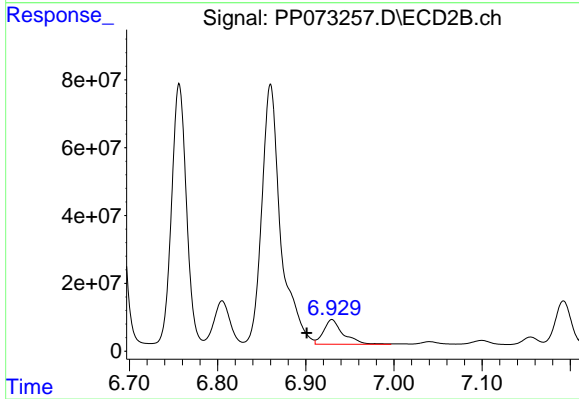
#35 AR-1260-5

R.T.: 7.396 min  
 Delta R.T.: -0.005 min  
 Response: 10972947  
 Conc: 51.42 ng/ml



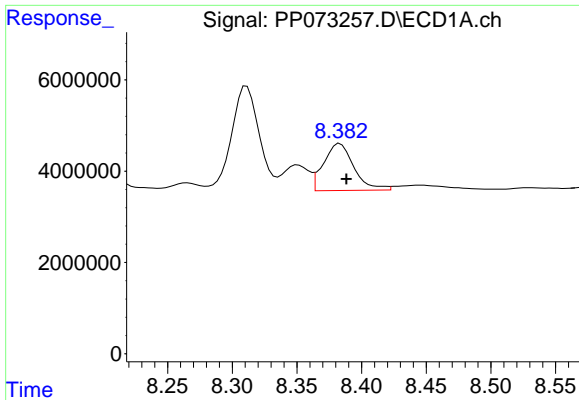
#36 AR-1262-1

R.T.: 8.052 min  
 Delta R.T.: -0.018 min  
 Response: 196047843  
 Conc: 1324.44 ng/ml



#36 AR-1262-1

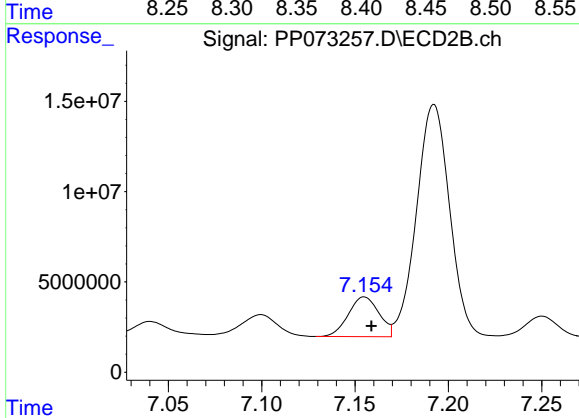
R.T.: 6.930 min  
 Delta R.T.: 0.029 min  
 Response: 112905540  
 Conc: 781.53 ng/ml



#37 AR-1262-2

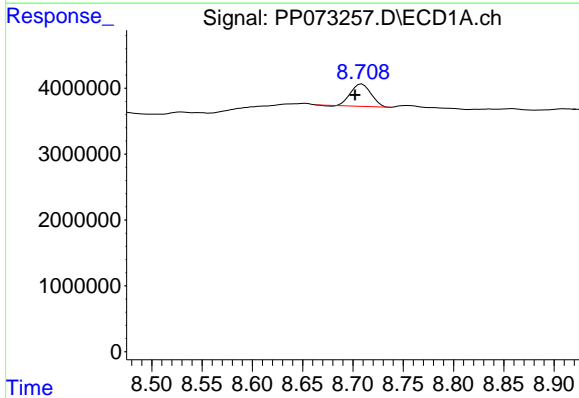
R.T.: 8.383 min  
 Delta R.T.: -0.005 min  
 Response: 16774066  
 Conc: 53.00 ng/ml

Instrument :  
 ECD\_P  
 ClientSampleId :  
 AUD-25-102



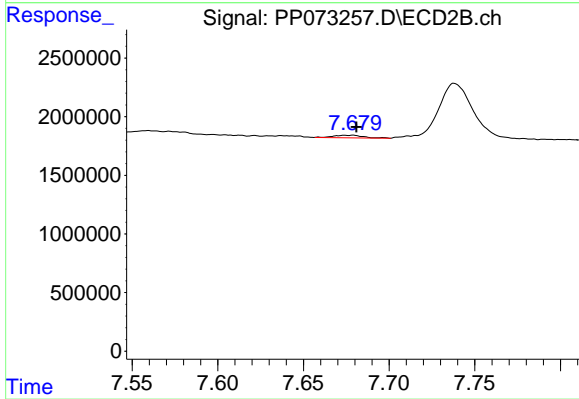
#37 AR-1262-2

R.T.: 7.155 min  
 Delta R.T.: -0.004 min  
 Response: 25178177  
 Conc: 205.99 ng/ml



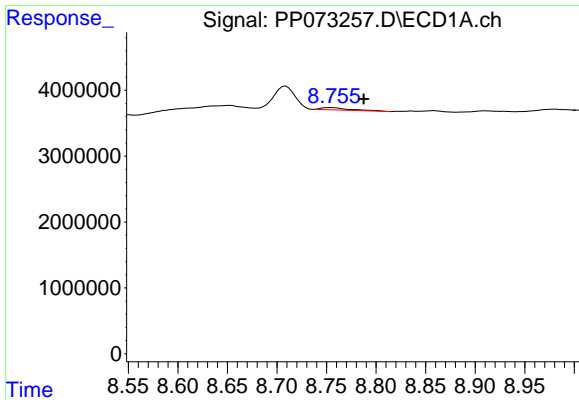
#38 AR-1262-3

R.T.: 8.709 min  
 Delta R.T.: 0.007 min  
 Response: 4814770  
 Conc: 22.50 ng/ml



#38 AR-1262-3

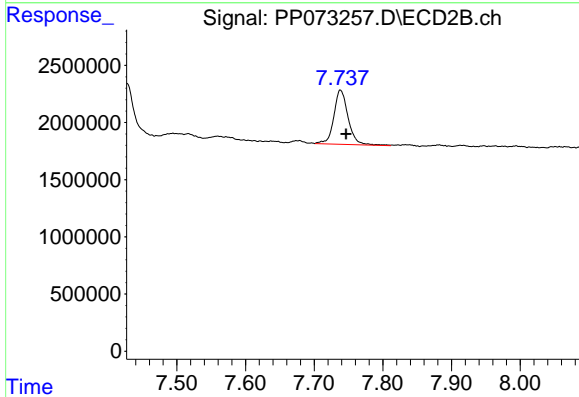
R.T.: 7.679 min  
 Delta R.T.: -0.002 min  
 Response: 270283  
 Conc: 2.40 ng/ml



#39 AR-1262-4

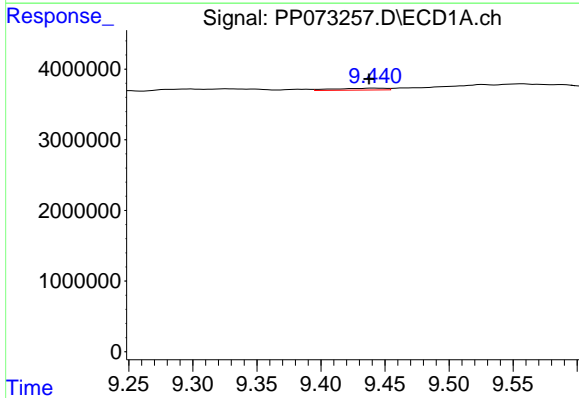
R.T.: 8.755 min  
 Delta R.T.: -0.033 min  
 Response: 714712  
 Conc: 4.54 ng/ml

Instrument :  
 ECD\_P  
 ClientSampleId :  
 AUD-25-102



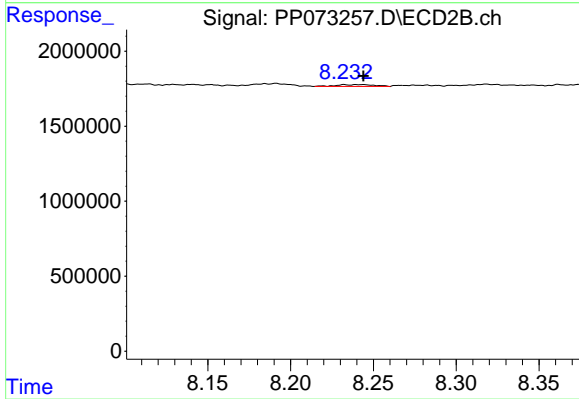
#39 AR-1262-4

R.T.: 7.738 min  
 Delta R.T.: -0.008 min  
 Response: 6887543  
 Conc: 37.56 ng/ml



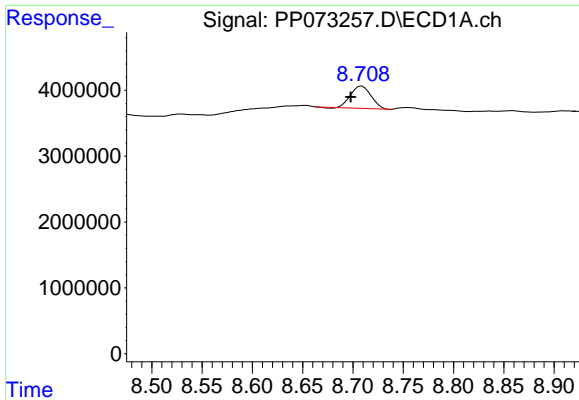
#40 AR-1262-5

R.T.: 9.441 min  
 Delta R.T.: 0.004 min  
 Response: 730307  
 Conc: 6.53 ng/ml



#40 AR-1262-5

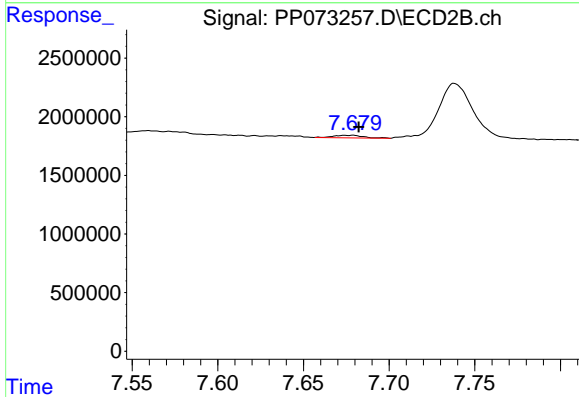
R.T.: 8.232 min  
 Delta R.T.: -0.011 min  
 Response: 197604  
 Conc: 2.28 ng/ml



#41 AR-1268-1

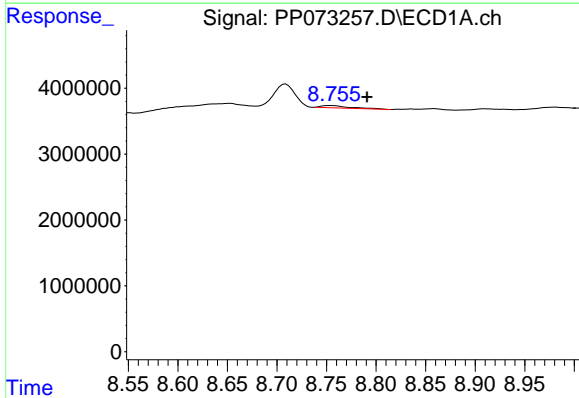
R.T.: 8.709 min  
 Delta R.T.: 0.011 min  
 Response: 4814770  
 Conc: 13.46 ng/ml

Instrument :  
 ECD\_P  
 ClientSampleId :  
 AUD-25-102



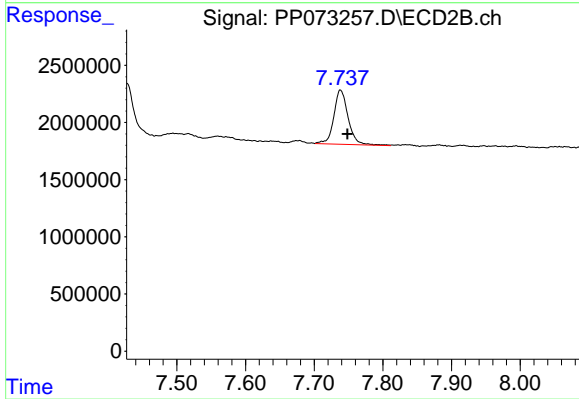
#41 AR-1268-1

R.T.: 7.679 min  
 Delta R.T.: -0.003 min  
 Response: 270283  
 Conc: 0.94 ng/ml



#42 AR-1268-2

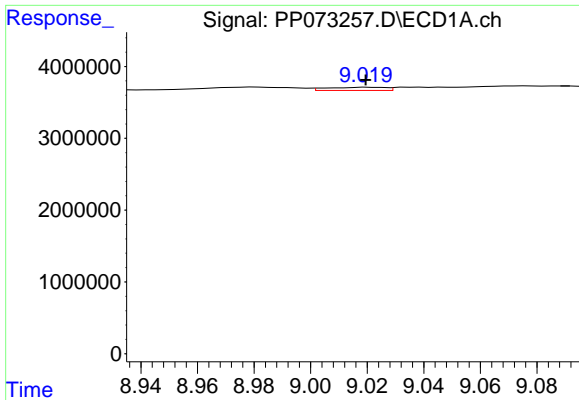
R.T.: 8.755 min  
 Delta R.T.: -0.036 min  
 Response: 714712  
 Conc: 2.34 ng/ml



#42 AR-1268-2

R.T.: 7.738 min  
 Delta R.T.: -0.010 min  
 Response: 6887543  
 Conc: 26.79 ng/ml

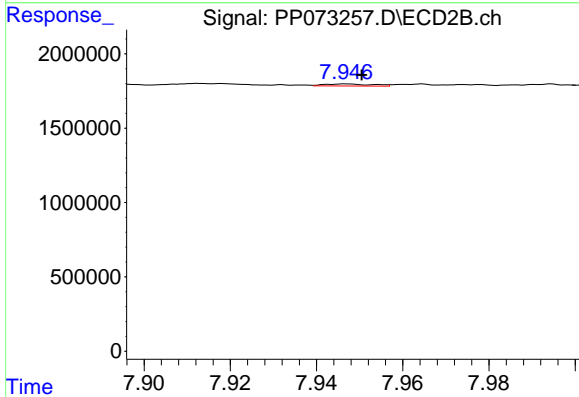




#43 AR-1268-3

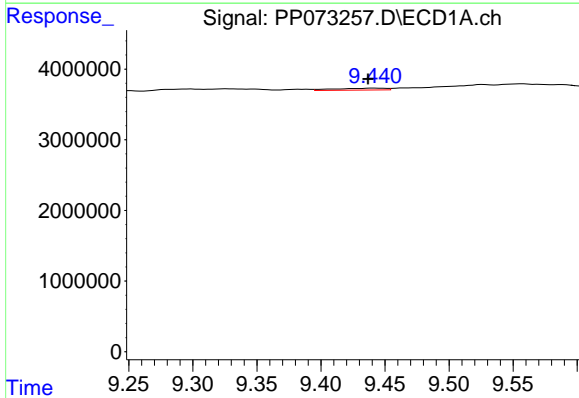
R.T.: 9.020 min  
 Delta R.T.: 0.000 min  
 Response: 636204  
 Conc: 2.40 ng/ml

Instrument :  
 ECD\_P  
 ClientSampleId :  
 AUD-25-102



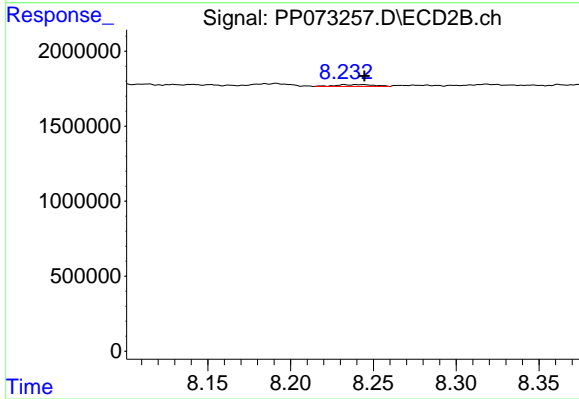
#43 AR-1268-3

R.T.: 7.947 min  
 Delta R.T.: -0.004 min  
 Response: 105455  
 Conc: 0.49 ng/ml



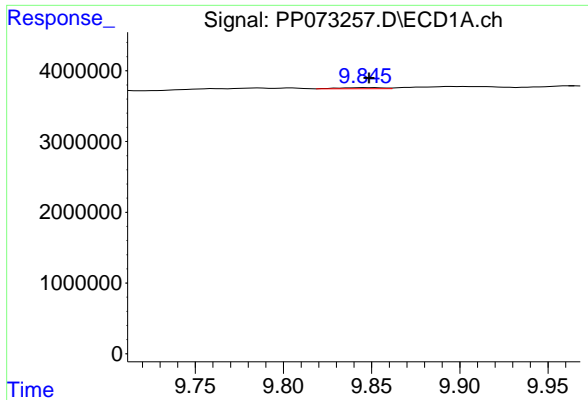
#44 AR-1268-4

R.T.: 9.441 min  
 Delta R.T.: 0.005 min  
 Response: 730307  
 Conc: 6.24 ng/ml



#44 AR-1268-4

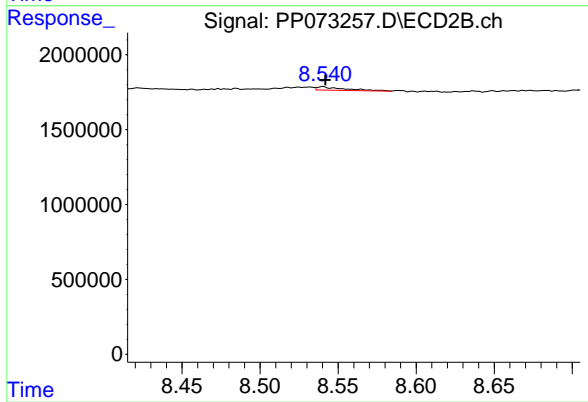
R.T.: 8.232 min  
 Delta R.T.: -0.012 min  
 Response: 197604  
 Conc: 2.10 ng/ml



#45 AR-1268-5

R.T.: 9.846 min  
 Delta R.T.: -0.002 min  
 Response: 265115  
 Conc: 0.36 ng/ml

Instrument :  
 ECD\_P  
 ClientSampleId :  
 AUD-25-102



#45 AR-1268-5

R.T.: 8.540 min  
 Delta R.T.: -0.002 min  
 Response: 280271  
 Conc: 0.48 ng/ml