

Data Path : Z:\pestpcbsrv\HPCHEM1\ECD_P\Data\PP062821\
 Data File : PP036823.D
 Signal(s) : Signal #1: ECD1A.CH Signal #2: ECD2B.CH
 Acq On : 28 Jun 2021 11:32
 Operator : DD\AJ
 Sample : M2856-10
 Misc :
 ALS Vial : 11 Sample Multiplier: 1

Instrument :
 ECD_P
 ClientSampleId :
 SB-05-COMP

Integration File signal 1: autoint1.e
 Integration File signal 2: autoint2.e
 Quant Time: Jun 29 06:55:53 2021
 Quant Method : Z:\pestpcbsrv\HPCHEM1\ECD_P\methods\PP061721.M
 Quant Title : GC EXTRACTABLES
 QLast Update : Fri Jun 18 06:06:19 2021
 Response via : Initial Calibration
 Integrator: ChemStation 6890 Scale Mode: Small noise peaks clipped

Volume Inj. : 2 µl
 Signal #1 Phase : ZB-MR1 Signal #2 Phase: ZB-MR2
 Signal #1 Info : 30Mx0.32mmx 0.50µ Signal #2 Info : 30M x 0.32mm x 0.25µm

Compound	RT#1	RT#2	Resp#1	Resp#2	ng/ml	ng/ml

System Monitoring Compounds						
1) SA Tetrachlo...	4.963	3.955	872963	584646	19.751	18.876
2) SA Decachlor...	10.990	9.249	924063	579350	21.541	18.116
Target Compounds						
9) L2 AR-1221-2	5.314	0.000	11816	0	27.419	N.D. #
24) L5 AR-1248-4	7.197f	0.000	10564	0	5.786	N.D. #
26) L6 AR-1254-1	7.197	0.000	10564	0	6.007	N.D. #
28) L6 AR-1254-3	7.818	0.000	11345	0	3.830	N.D. #
30) L6 AR-1254-5	8.550f	7.324	16496	10133	6.937	4.713 #
32) L7 AR-1260-2	8.230	0.000	6793	0	2.651	N.D. #
36) L8 AR-1262-1	0.000	7.324	0	10133	N.D.	8.502 #
45) L9 AR-1268-5	10.649	9.006	17499	10134	1.138	0.857

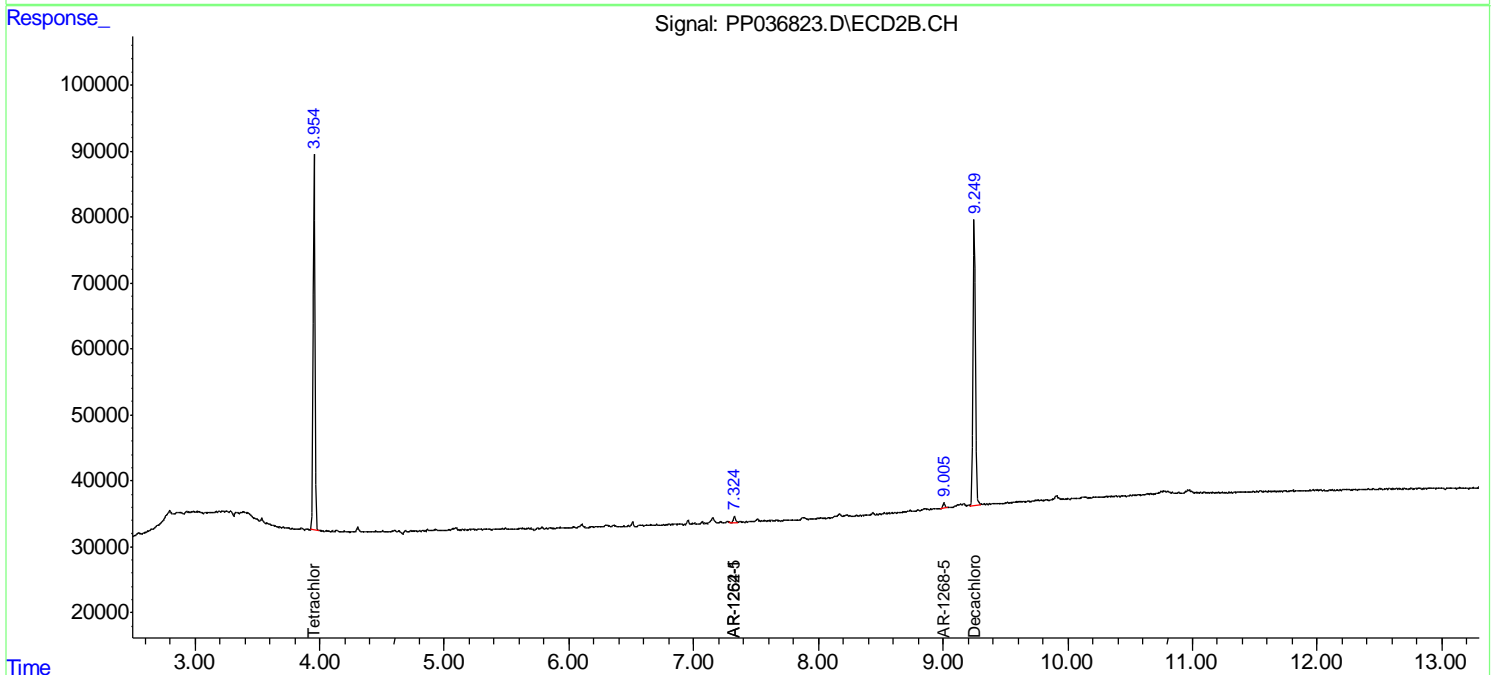
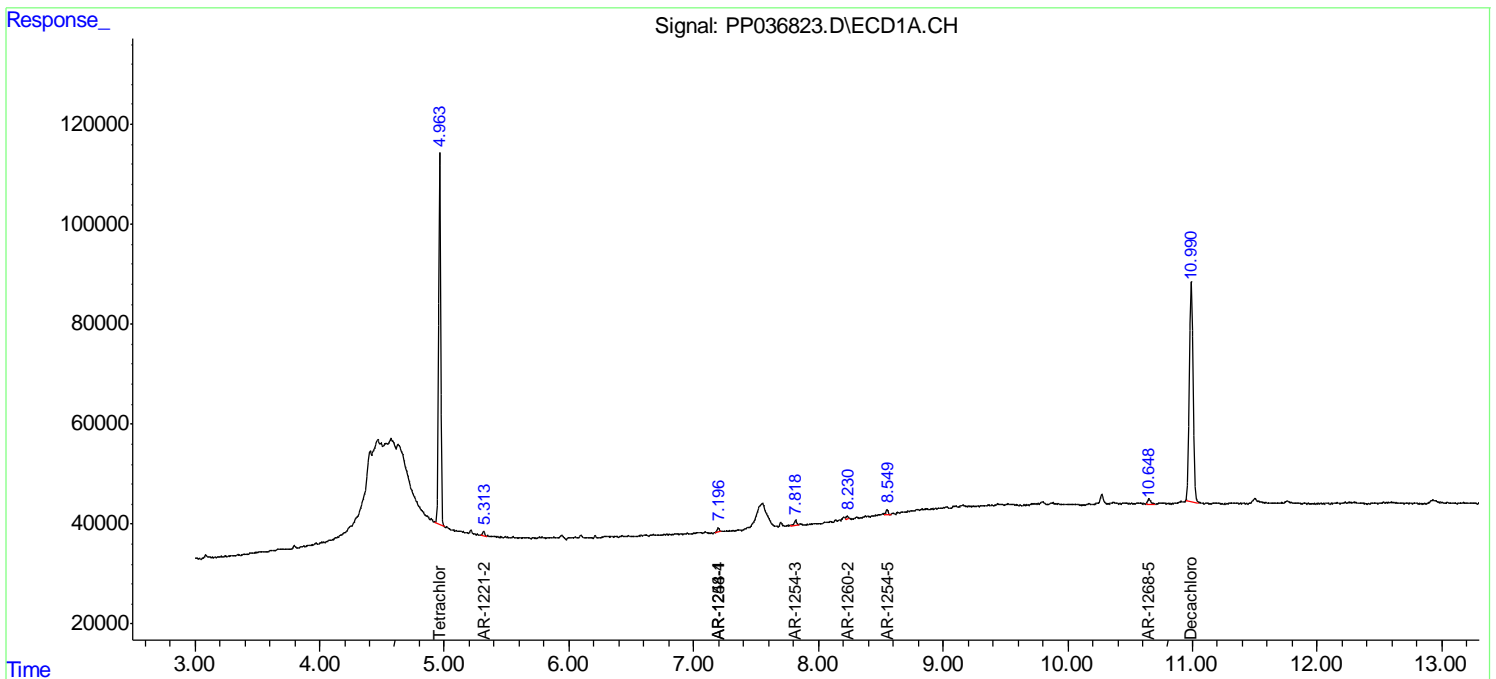
(f)=RT Delta > 1/2 Window (#)=Amounts differ by > 25% (m)=manual int.

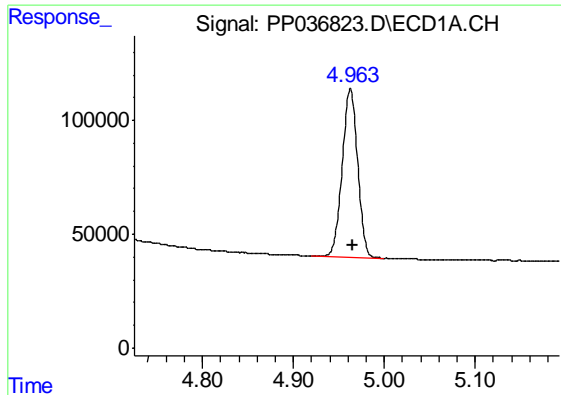
Data Path : Z:\pestpcbsrv\HPCHEM1\ECD_P\Data\PP062821\
 Data File : PP036823.D
 Signal(s) : Signal #1: ECD1A.CH Signal #2: ECD2B.CH
 Acq On : 28 Jun 2021 11:32
 Operator : DD\AJ
 Sample : M2856-10
 Misc :
 ALS Vial : 11 Sample Multiplier: 1

Instrument :
 ECD_P
 Client Sampled :
 SB-05-COMP

Integration File signal 1: autoint1.e
 Integration File signal 2: autoint2.e
 Quant Time: Jun 29 06:55:53 2021
 Quant Method : Z:\pestpcbsrv\HPCHEM1\ECD_P\methods\PP061721.M
 Quant Title : GC EXTRACTABLES
 QLast Update : Fri Jun 18 06:06:19 2021
 Response via : Initial Calibration
 Integrator: ChemStation 6890 Scale Mode: Small noise peaks clipped

Volume Inj. : 2 µl
 Signal #1 Phase : ZB-MR1 Signal #2 Phase: ZB-MR2
 Signal #1 Info : 30Mx0.32mmx 0.50µ Signal #2 Info : 30M x 0.32mm x 0.25µm

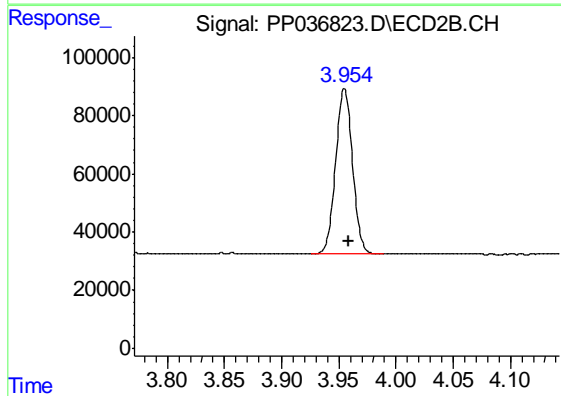




#1 Tetrachloro-m-xylene

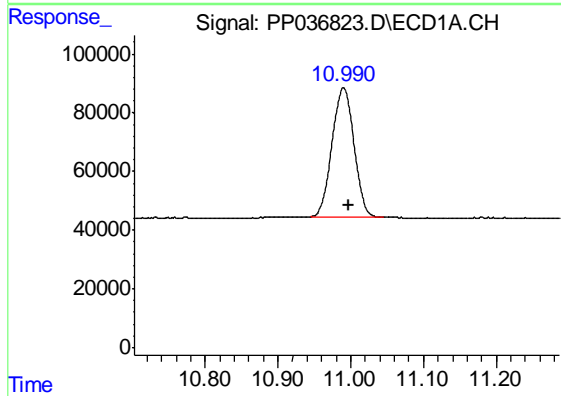
R.T.: 4.963 min
Delta R.T.: -0.002 min
Response: 872963
Conc: 19.75 ng/ml

Instrument :
ECD_P
ClientSampleId :
SB-05-COMP



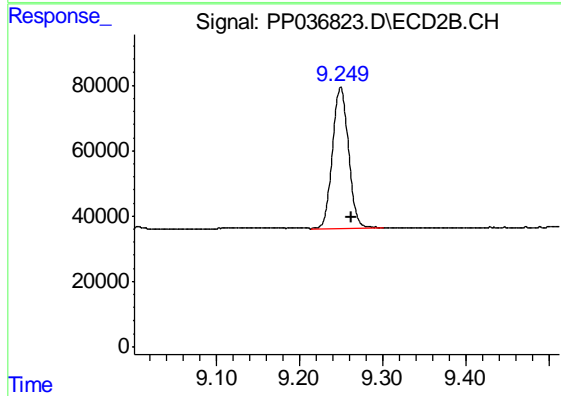
#1 Tetrachloro-m-xylene

R.T.: 3.955 min
Delta R.T.: -0.004 min
Response: 584646
Conc: 18.88 ng/ml



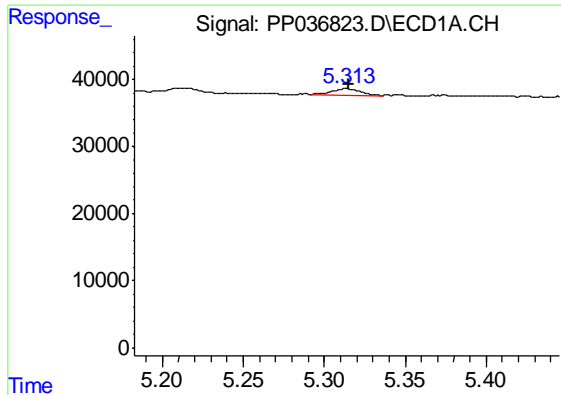
#2 Decachlorobiphenyl

R.T.: 10.990 min
Delta R.T.: -0.008 min
Response: 924063
Conc: 21.54 ng/ml



#2 Decachlorobiphenyl

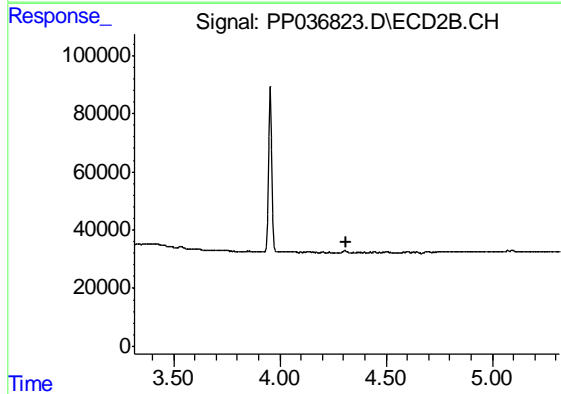
R.T.: 9.249 min
Delta R.T.: -0.013 min
Response: 579350
Conc: 18.12 ng/ml



#9 AR-1221-2

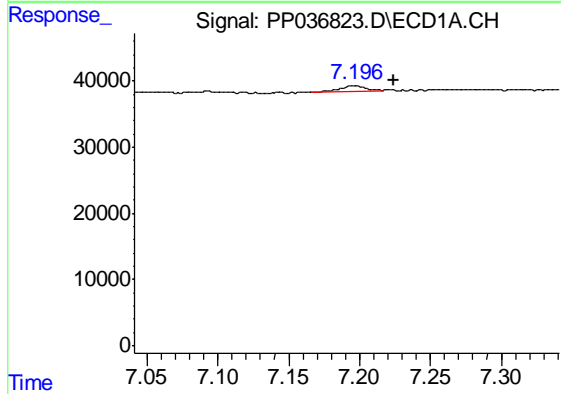
R.T.: 5.314 min
 Delta R.T.: -0.002 min
 Response: 11816
 Conc: 27.42 ng/ml

Instrument :
 ECD_P
 ClientSampleId :
 SB-05-COMP



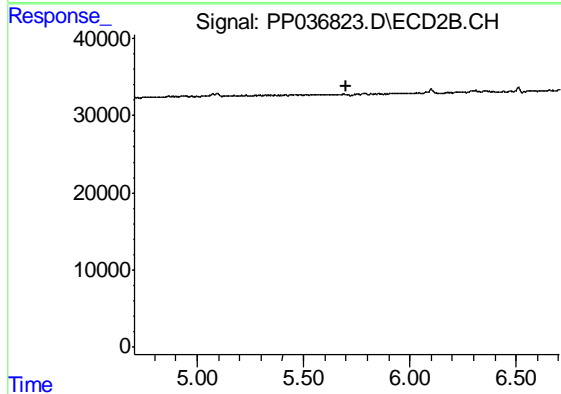
#9 AR-1221-2

R.T.: 0.000 min
 Exp R.T. : 4.316 min
 Response: 0
 Conc: N.D.



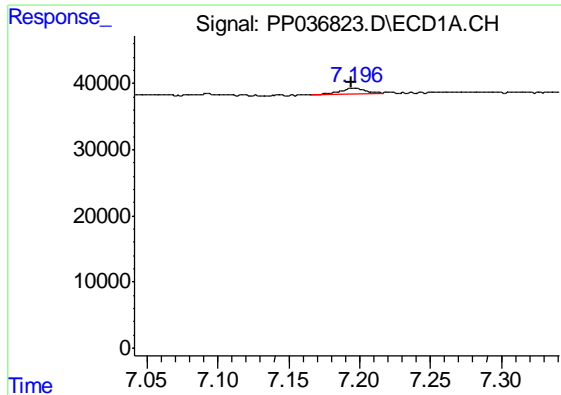
#24 AR-1248-4

R.T.: 7.197 min
 Delta R.T.: -0.028 min
 Response: 10564
 Conc: 5.79 ng/ml



#24 AR-1248-4

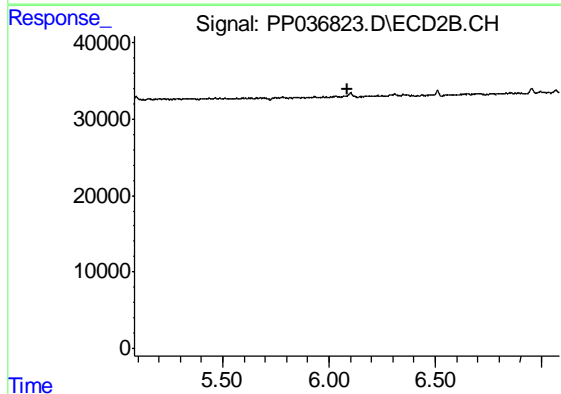
R.T.: 0.000 min
 Exp R.T. : 5.704 min
 Response: 0
 Conc: N.D.



#26 AR-1254-1

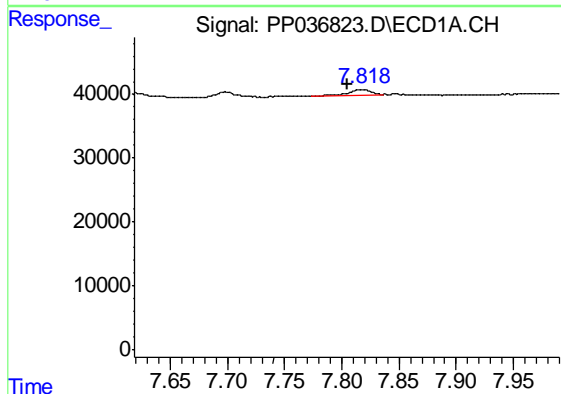
R.T.: 7.197 min
 Delta R.T.: 0.002 min
 Response: 10564
 Conc: 6.01 ng/ml

Instrument :
 ECD_P
 ClientSampleId :
 SB-05-COMP



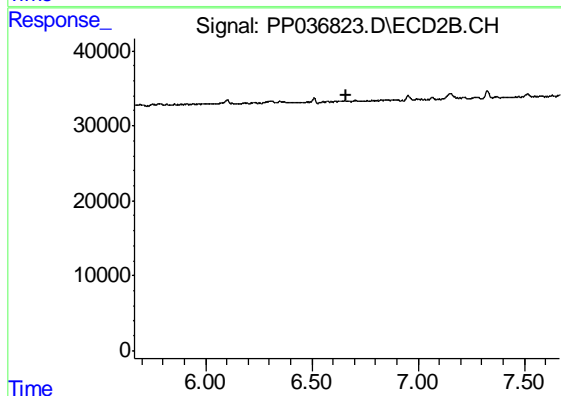
#26 AR-1254-1

R.T.: 0.000 min
 Exp R.T. : 6.084 min
 Response: 0
 Conc: N.D.



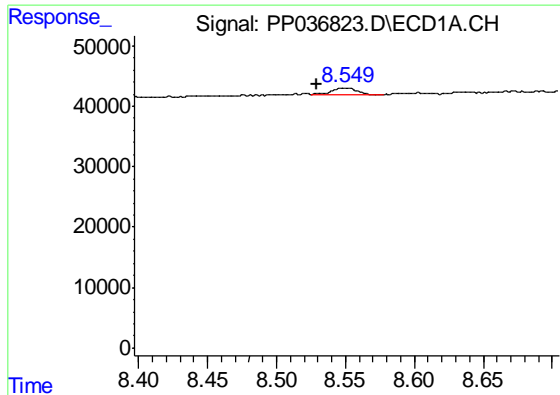
#28 AR-1254-3

R.T.: 7.818 min
 Delta R.T.: 0.013 min
 Response: 11345
 Conc: 3.83 ng/ml



#28 AR-1254-3

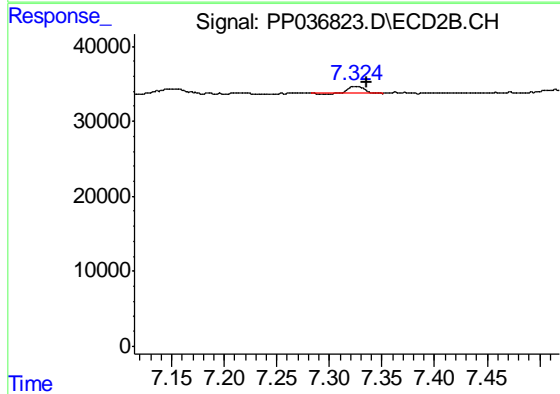
R.T.: 0.000 min
 Exp R.T. : 6.665 min
 Response: 0
 Conc: N.D.



#30 AR-1254-5

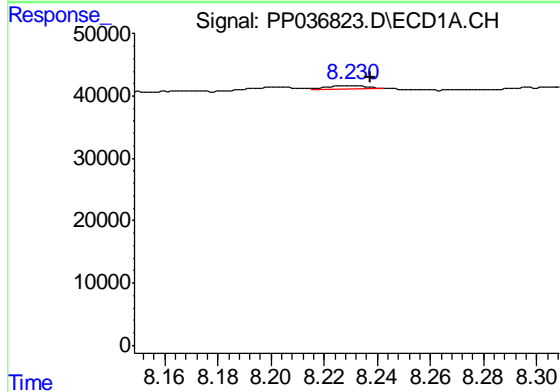
R.T.: 8.550 min
 Delta R.T.: 0.020 min
 Response: 16496
 Conc: 6.94 ng/ml

Instrument :
 ECD_P
 ClientSampleId :
 SB-05-COMP



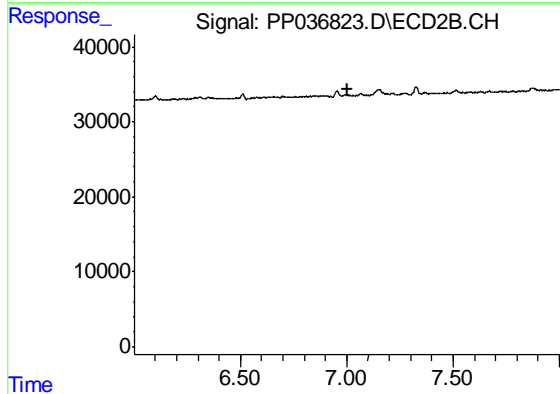
#30 AR-1254-5

R.T.: 7.324 min
 Delta R.T.: -0.011 min
 Response: 10133
 Conc: 4.71 ng/ml



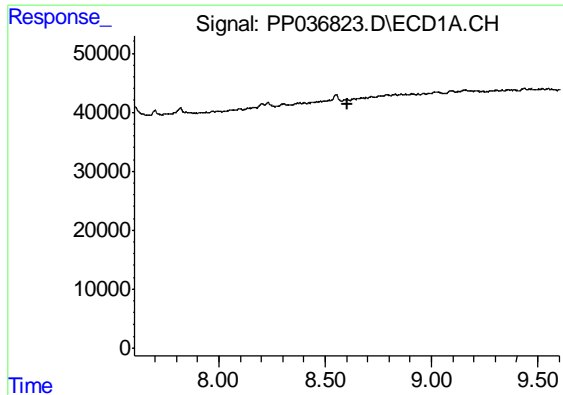
#32 AR-1260-2

R.T.: 8.230 min
 Delta R.T.: -0.008 min
 Response: 6793
 Conc: 2.65 ng/ml



#32 AR-1260-2

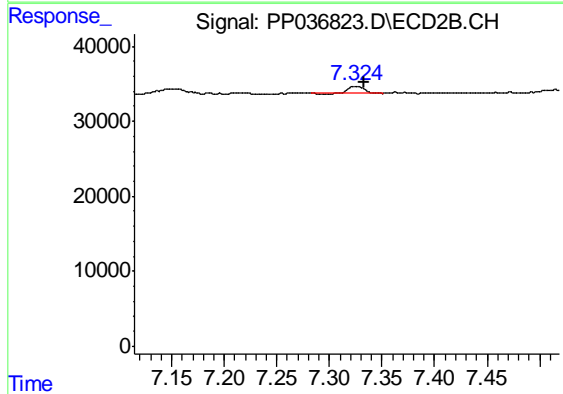
R.T.: 0.000 min
 Exp R.T. : 7.001 min
 Response: 0
 Conc: N.D.



#36 AR-1262-1

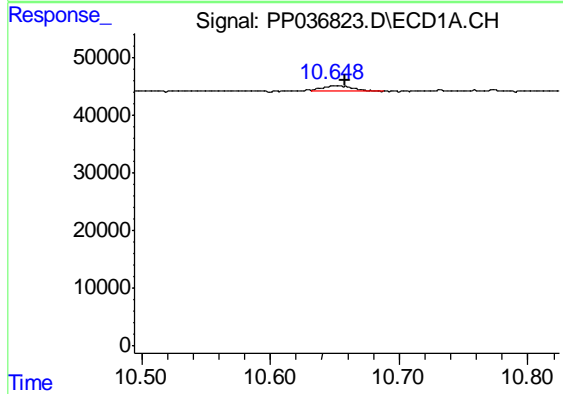
R.T.: 0.000 min
 Exp R.T. : 8.602 min
 Response: 0
 Conc: N.D.

Instrument :
 ECD_P
 ClientSampleId :
 SB-05-COMP



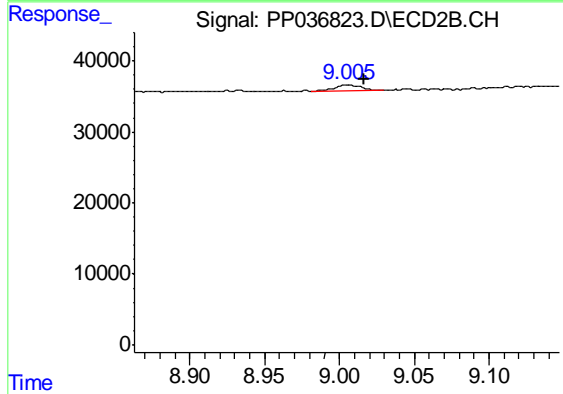
#36 AR-1262-1

R.T.: 7.324 min
 Delta R.T.: -0.009 min
 Response: 10133
 Conc: 8.50 ng/ml



#45 AR-1268-5

R.T.: 10.649 min
 Delta R.T.: -0.009 min
 Response: 17499
 Conc: 1.14 ng/ml



#45 AR-1268-5

R.T.: 9.006 min
 Delta R.T.: -0.011 min
 Response: 10134
 Conc: 0.86 ng/ml