

Data Path : Z:\pestpcbsrv\HPCHEM1\ECD_P\Data\PP062822\
 Data File : PP048989.D
 Signal(s) : Signal #1: ECD1A.ch Signal #2: ECD2B.ch
 Acq On : 29 Jun 2022 04:33
 Operator : YP\AJ
 Sample : AR1232ICC500
 Misc :
 ALS Vial : 9 Sample Multiplier: 1

Instrument :
 ECD_P
 ClientSampleId :
 AR1232ICC500

Integration File signal 1: autoint1.e
 Integration File signal 2: autoint2.e
 Quant Time: Jun 29 05:31:27 2022
 Quant Method : Z:\pestpcbsrv\HPCHEM1\ECD_P\methods\PP062822.M
 Quant Title : GC EXTRACTABLES
 QLast Update : Wed Jun 29 05:31:19 2022
 Response via : Initial Calibration
 Integrator: ChemStation

Volume Inj. : 2 µl
 Signal #1 Phase : ZB-MR1 Signal #2 Phase: ZB-MR2
 Signal #1 Info : 30Mx0.32mmx 0.50µ Signal #2 Info : 30M x 0.32mm x 0.25µm

Compound	RT#1	RT#2	Resp#1	Resp#2	ng/ml	ng/ml

System Monitoring Compounds						
1) SA Tetrachlo...	4.346	3.594	76345535	133.5E6	50.000	50.000
2) SA Decachlor...	10.095	8.568	65760552	58545496	50.000	50.000
Target Compounds						
11) L3 AR-1232-1	4.724	3.967	19010991	34736058	500.000	500.000
12) L3 AR-1232-2	5.253	4.689	9451087	32123879	500.000	500.000
13) L3 AR-1232-3	5.546	4.864	18480467	17602851	500.000	500.000
14) L3 AR-1232-4	5.709	4.947	9557365	15823179	500.000	500.000
15) L3 AR-1232-5	5.796	5.117	7797527	17900593	500.000	500.000

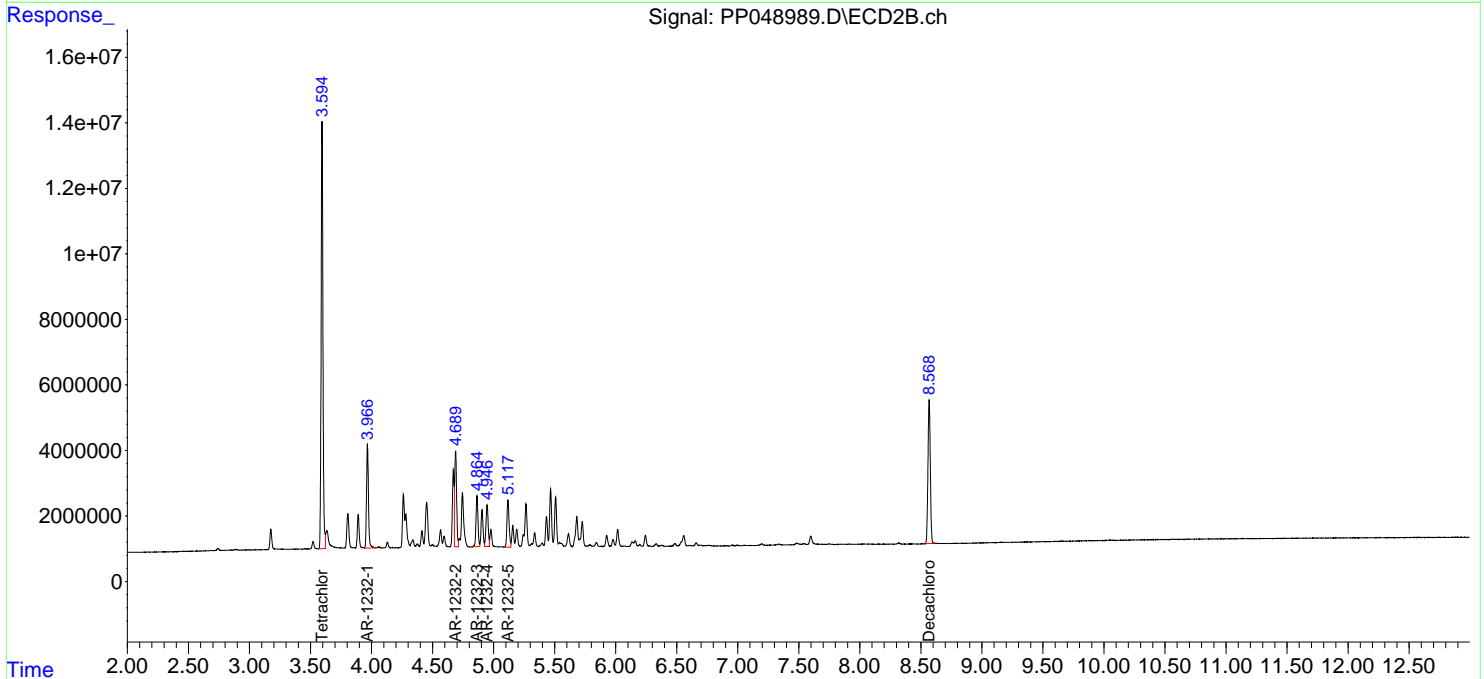
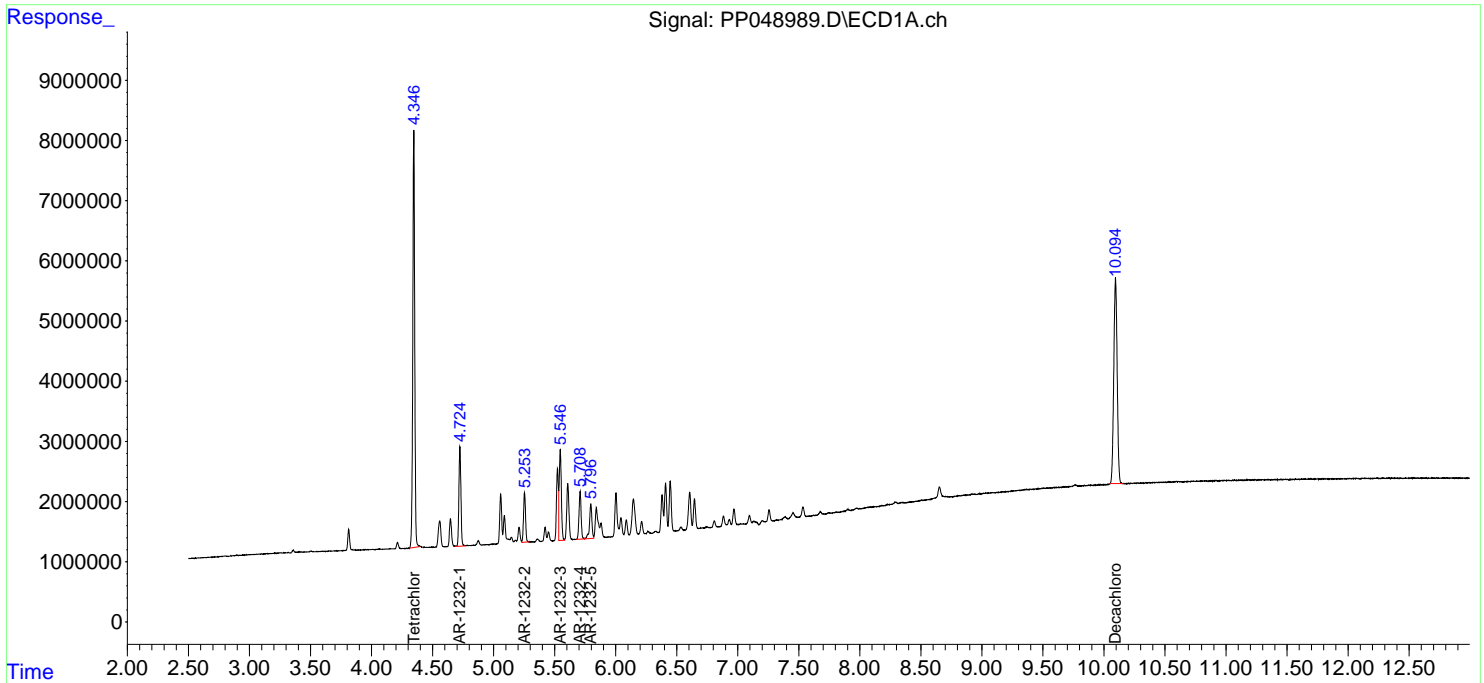
(f)=RT Delta > 1/2 Window (#)=Amounts differ by > 25% (m)=manual int.

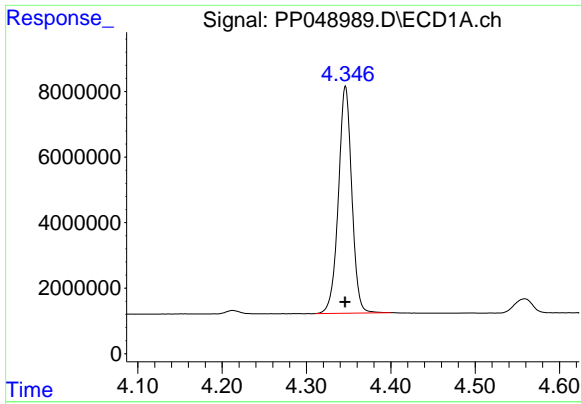
Data Path : Z:\pestpcbsrv\HPCHEM1\ECD_P\Data\PP062822\
 Data File : PP048989.D
 Signal(s) : Signal #1: ECD1A.ch Signal #2: ECD2B.ch
 Acq On : 29 Jun 2022 04:33
 Operator : YP\AJ
 Sample : AR1232ICC500
 Misc :
 ALS Vial : 9 Sample Multiplier: 1

Instrument :
 ECD_P
 ClientSampleId :
 AR1232ICC500

Integration File signal 1: autoint1.e
 Integration File signal 2: autoint2.e
 Quant Time: Jun 29 05:31:27 2022
 Quant Method : Z:\pestpcbsrv\HPCHEM1\ECD_P\methods\PP062822.M
 Quant Title : GC EXTRACTABLES
 QLast Update : Wed Jun 29 05:31:19 2022
 Response via : Initial Calibration
 Integrator: ChemStation

Volume Inj. : 2 µl
 Signal #1 Phase : ZB-MR1 Signal #2 Phase: ZB-MR2
 Signal #1 Info : 30Mx0.32mmx 0.50µ Signal #2 Info : 30M x 0.32mm x 0.25µm

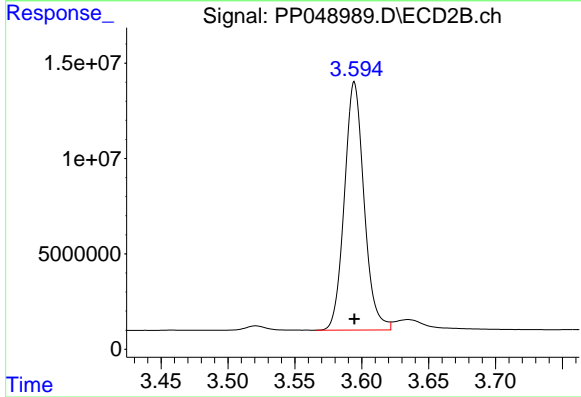




#1 Tetrachloro-m-xylene

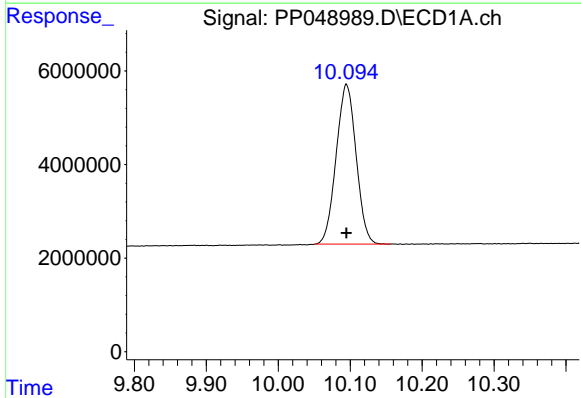
R.T.: 4.346 min
 Delta R.T.: 0.000 min
 Response: 76345535
 Conc: 50.00 ng/ml

Instrument :
 ECD_P
 ClientSampleId :
 AR1232ICC500



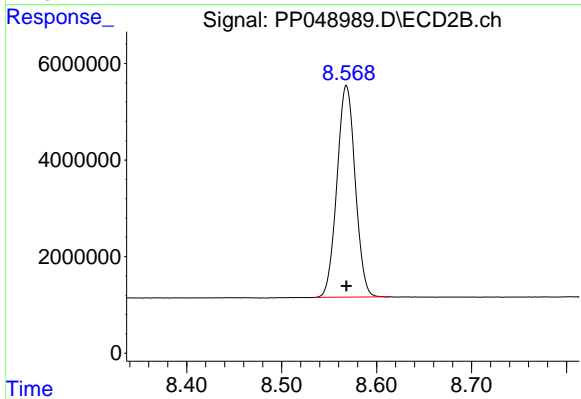
#1 Tetrachloro-m-xylene

R.T.: 3.594 min
 Delta R.T.: 0.000 min
 Response: 133539369
 Conc: 50.00 ng/ml



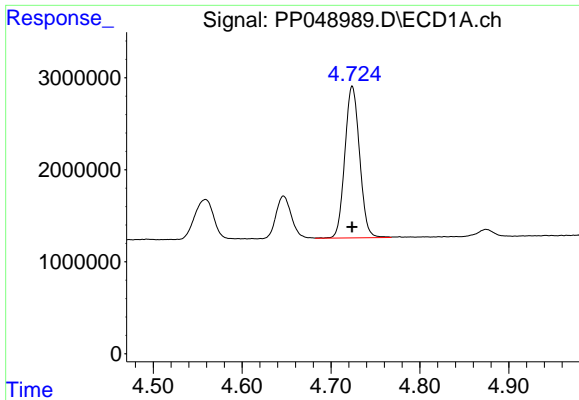
#2 Decachlorobiphenyl

R.T.: 10.095 min
 Delta R.T.: 0.000 min
 Response: 65760552
 Conc: 50.00 ng/ml



#2 Decachlorobiphenyl

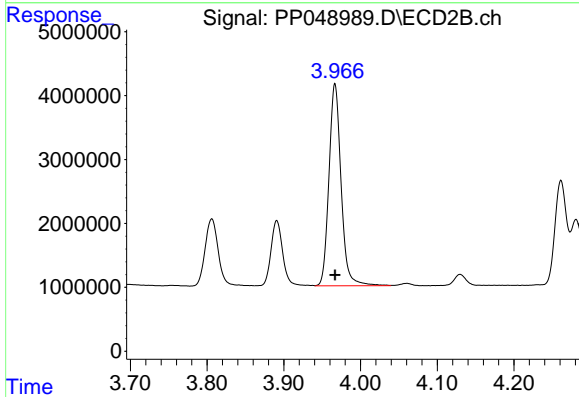
R.T.: 8.568 min
 Delta R.T.: 0.000 min
 Response: 58545496
 Conc: 50.00 ng/ml



#11 AR-1232-1

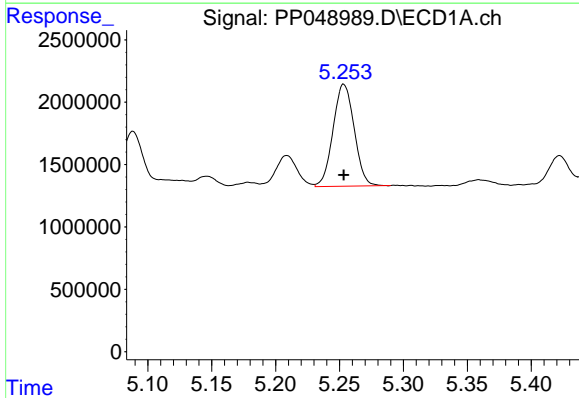
R.T.: 4.724 min
 Delta R.T.: 0.000 min
 Response: 19010991
 Conc: 500.00 ng/ml

Instrument :
 ECD_P
 ClientSampleId :
 AR1232ICC500



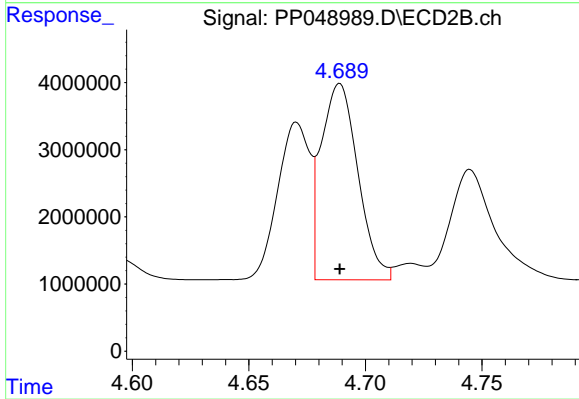
#11 AR-1232-1

R.T.: 3.967 min
 Delta R.T.: 0.000 min
 Response: 34736058
 Conc: 500.00 ng/ml



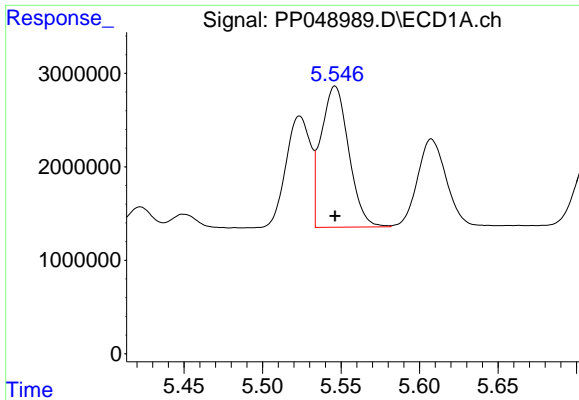
#12 AR-1232-2

R.T.: 5.253 min
 Delta R.T.: 0.000 min
 Response: 9451087
 Conc: 500.00 ng/ml



#12 AR-1232-2

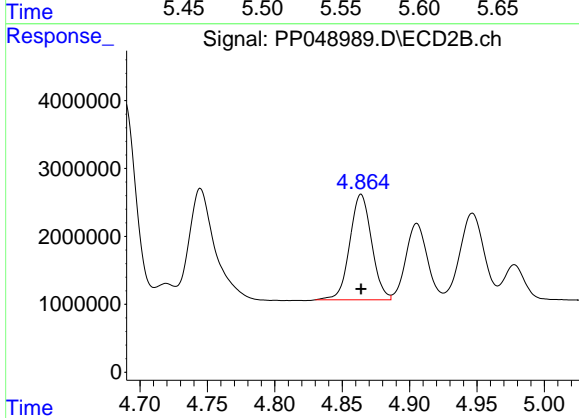
R.T.: 4.689 min
 Delta R.T.: 0.000 min
 Response: 32123879
 Conc: 500.00 ng/ml



#13 AR-1232-3

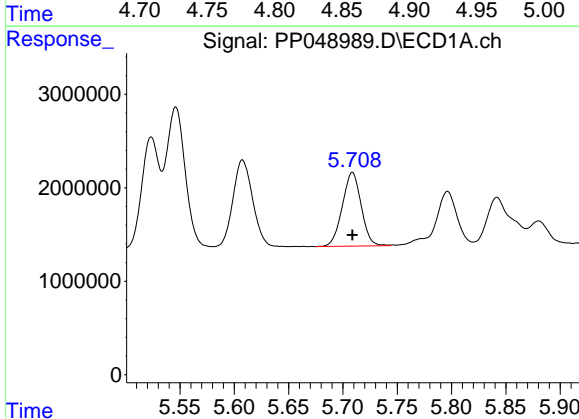
R.T.: 5.546 min
 Delta R.T.: 0.000 min
 Response: 18480467
 Conc: 500.00 ng/ml

Instrument :
 ECD_P
 ClientSampleId :
 AR1232ICC500



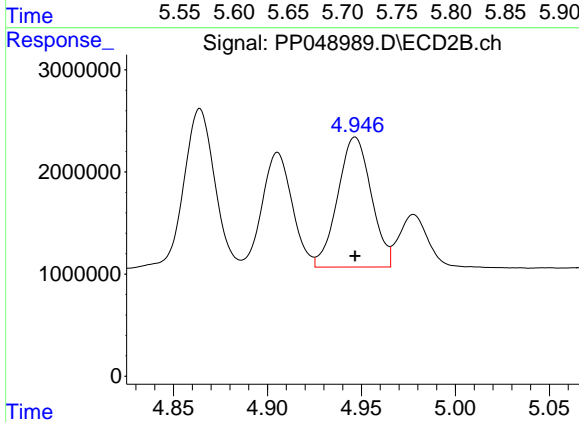
#13 AR-1232-3

R.T.: 4.864 min
 Delta R.T.: 0.000 min
 Response: 17602851
 Conc: 500.00 ng/ml



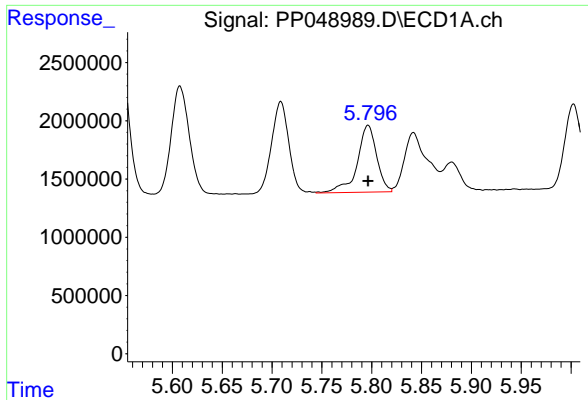
#14 AR-1232-4

R.T.: 5.709 min
 Delta R.T.: 0.000 min
 Response: 9557365
 Conc: 500.00 ng/ml



#14 AR-1232-4

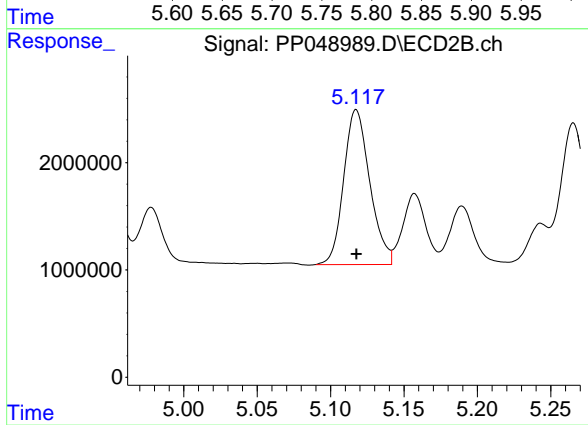
R.T.: 4.947 min
 Delta R.T.: 0.000 min
 Response: 15823179
 Conc: 500.00 ng/ml



#15 AR-1232-5

R.T.: 5.796 min
Delta R.T.: 0.000 min
Response: 7797527
Conc: 500.00 ng/ml

Instrument :
ECD_P
ClientSampleId :
AR1232ICC500



#15 AR-1232-5

R.T.: 5.117 min
Delta R.T.: 0.000 min
Response: 17900593
Conc: 500.00 ng/ml