

Data Path : Z:\pestpcbsrv\HPCHEM1\ECD_P\Data\PP063022\
 Data File : PP049116.D
 Signal(s) : Signal #1: ECD1A.ch Signal #2: ECD2B.ch
 Acq On : 01 Jul 2022 01:29
 Operator : YP\AJ
 Sample : PB145951BS
 Misc :
 ALS Vial : 48 Sample Multiplier: 1

Instrument :
 ECD_P
ClientSampleId :
 PB145951BS

Integration File signal 1: autoint1.e
 Integration File signal 2: autoint2.e
 Quant Time: Jul 01 04:58:37 2022
 Quant Method : Z:\pestpcbsrv\HPCHEM1\ECD_P\methods\PP062822.M
 Quant Title : GC EXTRACTABLES
 QLast Update : Wed Jun 29 09:37:18 2022
 Response via : Initial Calibration
 Integrator: ChemStation

Volume Inj. : 2 µl
 Signal #1 Phase : ZB-MR1 Signal #2 Phase: ZB-MR2
 Signal #1 Info : 30Mx0.32mmx 0.50µ Signal #2 Info : 30M x 0.32mm x 0.25µm

Compound	RT#1	RT#2	Resp#1	Resp#2	ng/ml	ng/ml

System Monitoring Compounds						
1) SA Tetrachlo...	4.343	3.593	30745328	51743521	21.628	20.207
2) SA Decachlor...	10.092	8.565	30987742	25574220	25.263	22.688
Target Compounds						
3) L1 AR-1016-1	5.521	4.669	26719276	41993863	508.237	460.109
4) L1 AR-1016-2	5.543	4.687	38175414	59328292	506.574	461.013
5) L1 AR-1016-3	5.605	4.862	23659985	31626482	486.014	427.399
6) L1 AR-1016-4	5.705	4.903	19783927	25395919	509.682	496.418
7) L1 AR-1016-5	5.999	5.116	20143114	32292289	527.954	432.881
31) L7 AR-1260-1	7.128	6.144	39578129	52590494	544.045	456.500
32) L7 AR-1260-2	7.387	6.330	46732959	60391998	555.260	450.247
33) L7 AR-1260-3	7.745	6.484	30042349	55943656	536.990	459.561
34) L7 AR-1260-4	7.973	6.954	37796350	37548240	540.462	445.033
35) L7 AR-1260-5	8.293	7.195	71177868	82893316	519.463	439.699

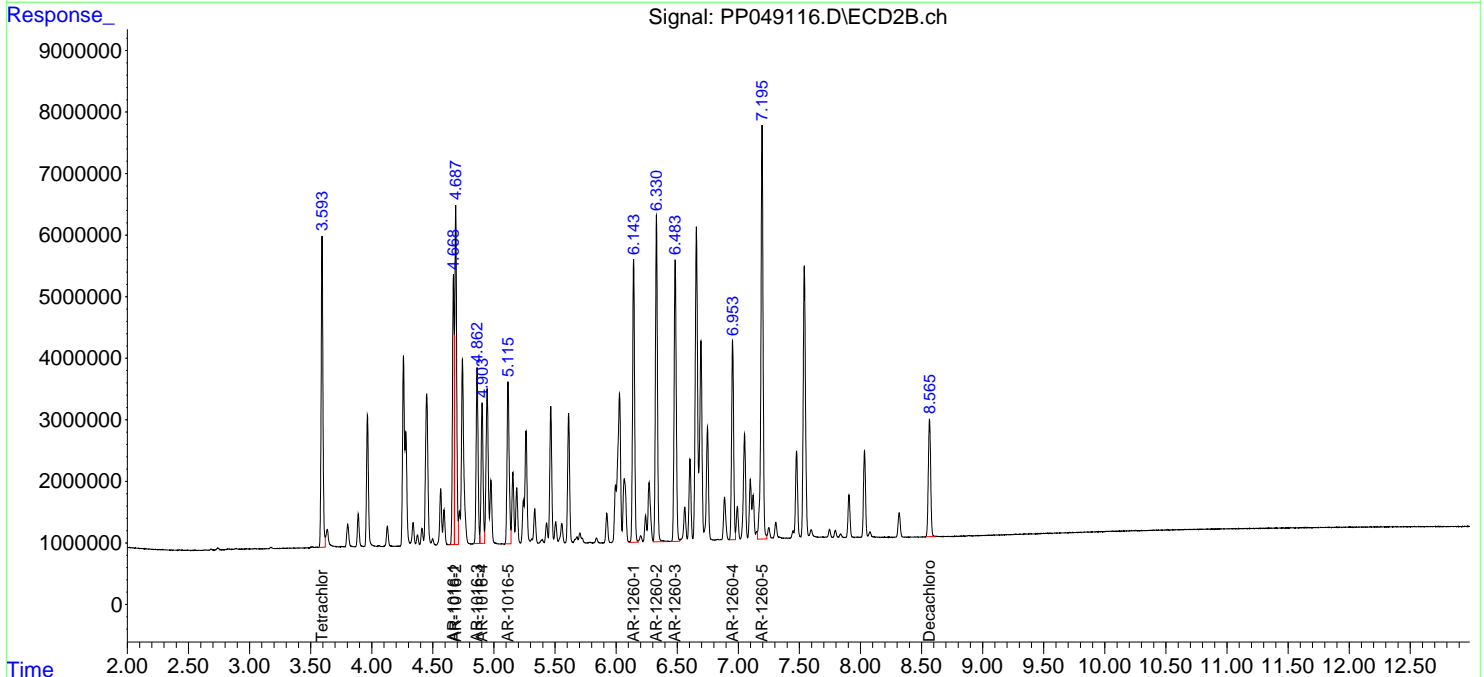
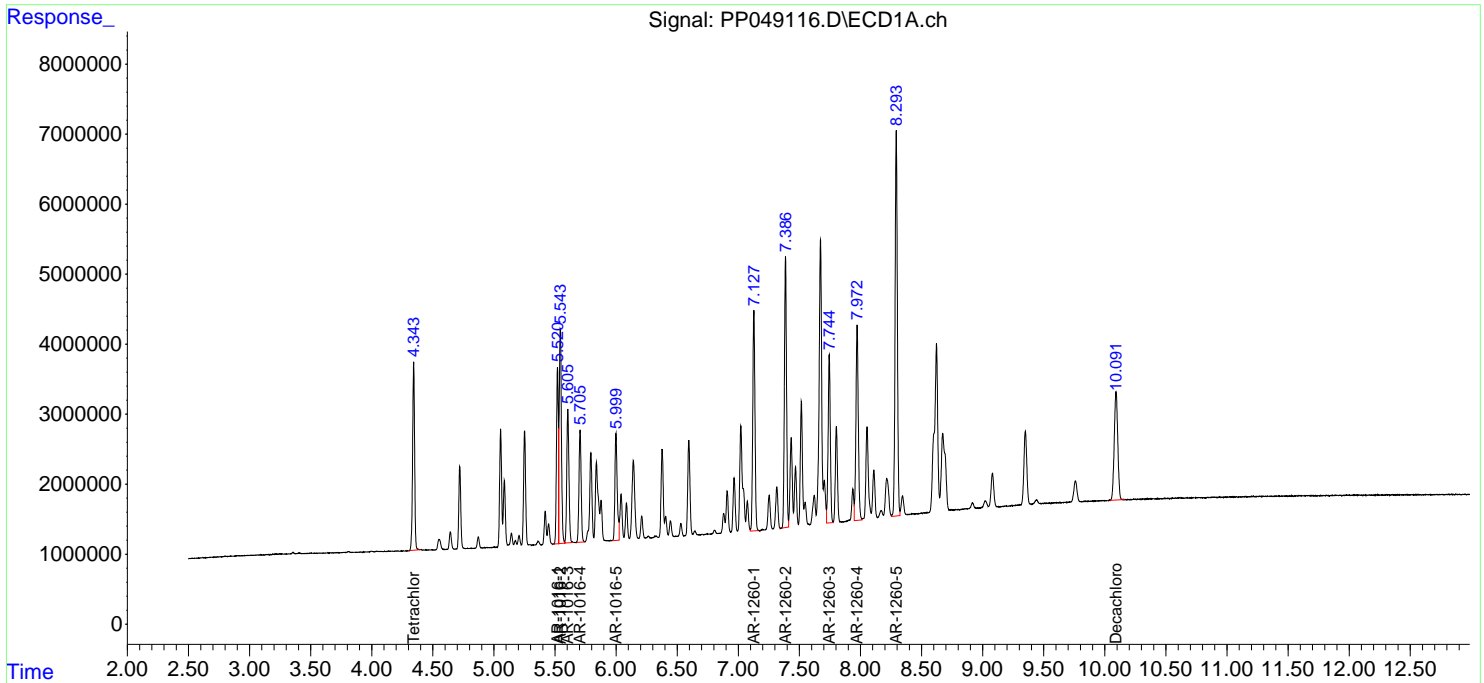
(f)=RT Delta > 1/2 Window (#)=Amounts differ by > 25% (m)=manual int.

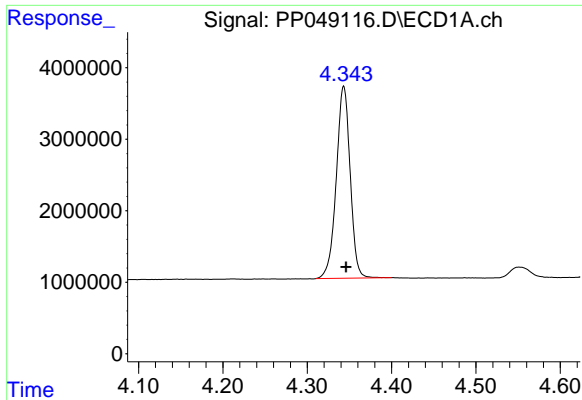
Data Path : Z:\pestpcbsrv\HPCHEM1\ECD_P\Data\PP063022\
 Data File : PP049116.D
 Signal(s) : Signal #1: ECD1A.ch Signal #2: ECD2B.ch
 Acq On : 01 Jul 2022 01:29
 Operator : YP\AJ
 Sample : PB145951BS
 Misc :
 ALS Vial : 48 Sample Multiplier: 1

Instrument :
 ECD_P
 ClientSampleId :
 PB145951BS

Integration File signal 1: autoint1.e
 Integration File signal 2: autoint2.e
 Quant Time: Jul 01 04:58:37 2022
 Quant Method : Z:\pestpcbsrv\HPCHEM1\ECD_P\methods\PP062822.M
 Quant Title : GC EXTRACTABLES
 QLast Update : Wed Jun 29 09:37:18 2022
 Response via : Initial Calibration
 Integrator: ChemStation

Volume Inj. : 2 µl
 Signal #1 Phase : ZB-MR1 Signal #2 Phase: ZB-MR2
 Signal #1 Info : 30Mx0.32mmx 0.50µ Signal #2 Info : 30M x 0.32mm x 0.25µm

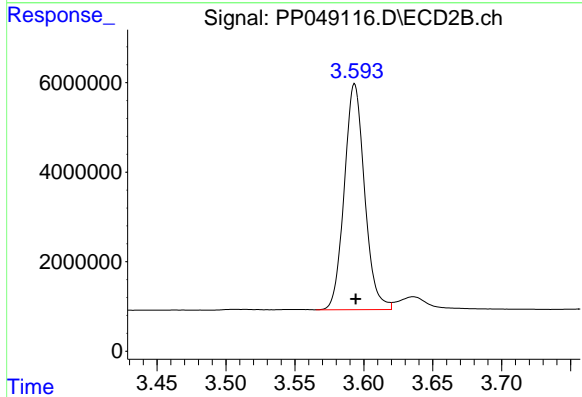




#1 Tetrachloro-m-xylene

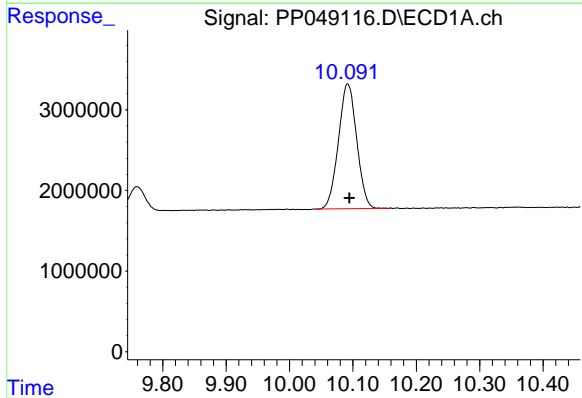
R.T.: 4.343 min
 Delta R.T.: -0.003 min
 Response: 30745328
 Conc: 21.63 ng/ml

Instrument :
 ECD_P
 ClientSampleId :
 PB145951BS



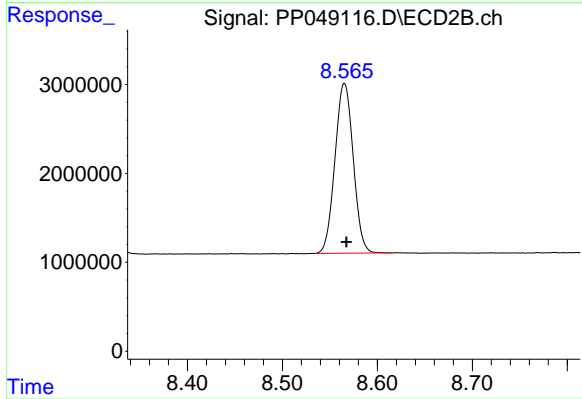
#1 Tetrachloro-m-xylene

R.T.: 3.593 min
 Delta R.T.: 0.000 min
 Response: 51743521
 Conc: 20.21 ng/ml



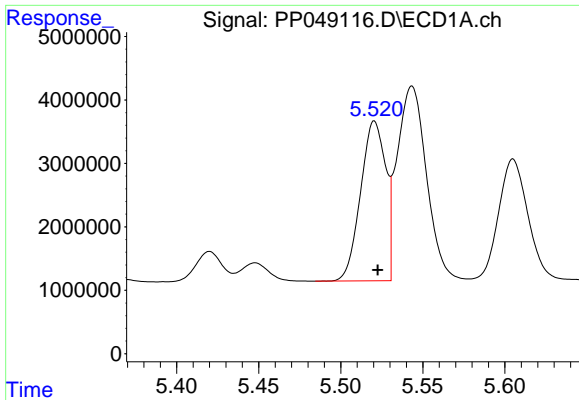
#2 Decachlorobiphenyl

R.T.: 10.092 min
 Delta R.T.: -0.002 min
 Response: 30987742
 Conc: 25.26 ng/ml



#2 Decachlorobiphenyl

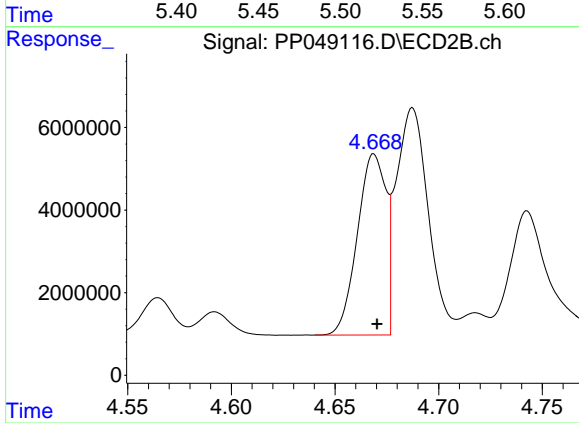
R.T.: 8.565 min
 Delta R.T.: -0.002 min
 Response: 25574220
 Conc: 22.69 ng/ml



#3 AR-1016-1

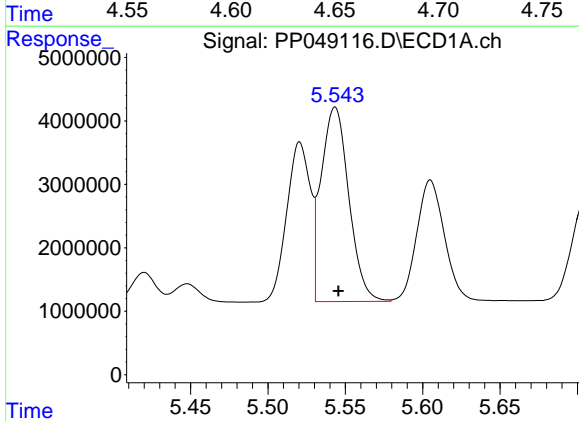
R.T.: 5.521 min
 Delta R.T.: -0.002 min
 Response: 26719276
 Conc: 508.24 ng/ml

Instrument :
 ECD_P
 ClientSampleId :
 PB145951BS



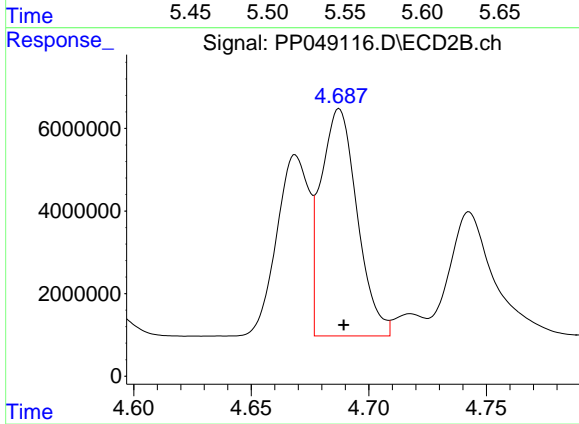
#3 AR-1016-1

R.T.: 4.669 min
 Delta R.T.: -0.002 min
 Response: 41993863
 Conc: 460.11 ng/ml



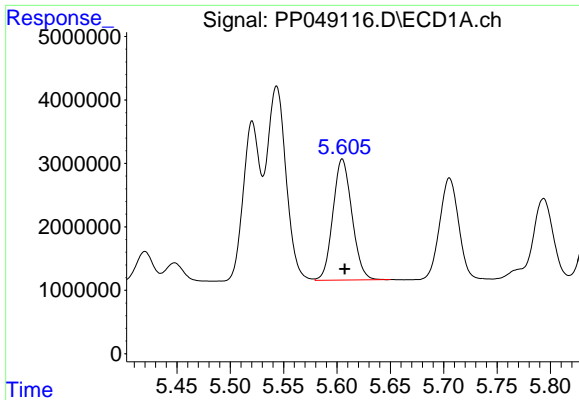
#4 AR-1016-2

R.T.: 5.543 min
 Delta R.T.: -0.002 min
 Response: 38175414
 Conc: 506.57 ng/ml



#4 AR-1016-2

R.T.: 4.687 min
 Delta R.T.: -0.002 min
 Response: 59328292
 Conc: 461.01 ng/ml

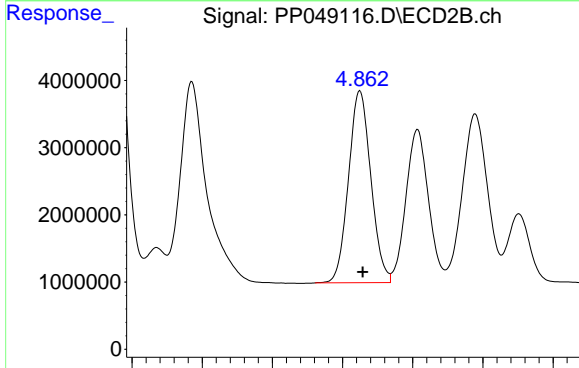


#5 AR-1016-3

R.T.: 5.605 min
 Delta R.T.: -0.002 min
 Response: 23659985
 Conc: 486.01 ng/ml

Instrument :
 ECD_P
 ClientSampleId :
 PB145951BS

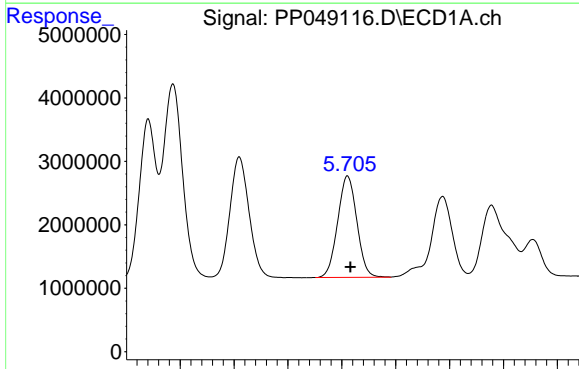
Time 5.45 5.50 5.55 5.60 5.65 5.70 5.75 5.80



#5 AR-1016-3

R.T.: 4.862 min
 Delta R.T.: -0.002 min
 Response: 31626482
 Conc: 427.40 ng/ml

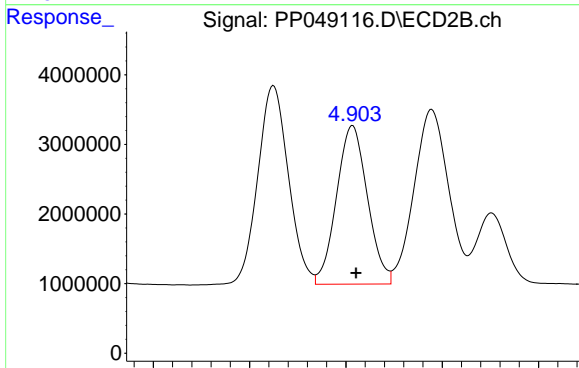
Time 4.70 4.75 4.80 4.85 4.90 4.95 5.00



#6 AR-1016-4

R.T.: 5.705 min
 Delta R.T.: -0.003 min
 Response: 19783927
 Conc: 509.68 ng/ml

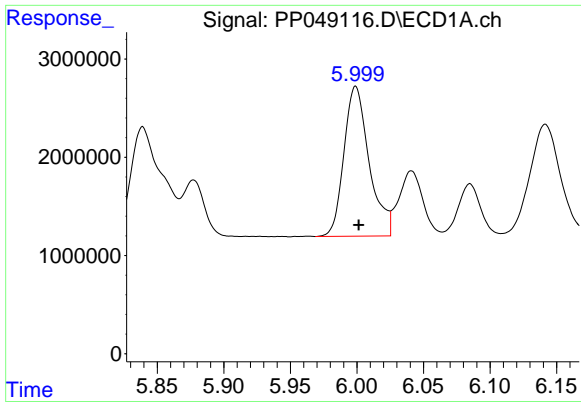
Time 5.55 5.60 5.65 5.70 5.75 5.80 5.85 5.90



#6 AR-1016-4

R.T.: 4.903 min
 Delta R.T.: -0.002 min
 Response: 25395919
 Conc: 496.42 ng/ml

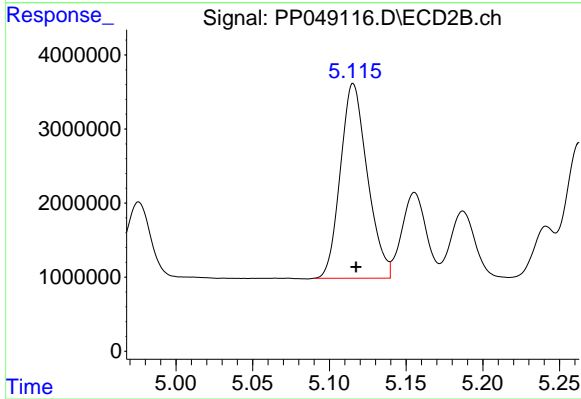
Time 4.80 4.85 4.90 4.95 5.00



#7 AR-1016-5

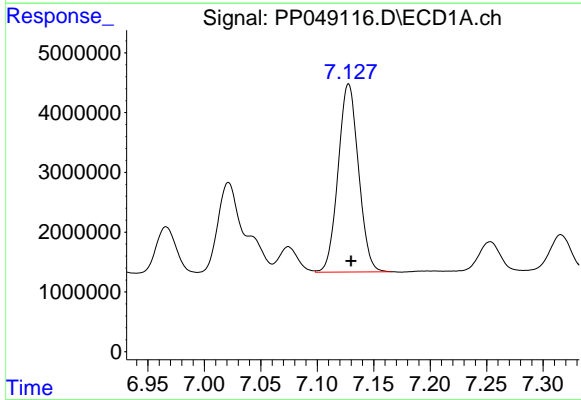
R.T.: 5.999 min
Delta R.T.: -0.002 min
Response: 20143114
Conc: 527.95 ng/ml

Instrument :
ECD_P
ClientSampleId :
PB145951BS



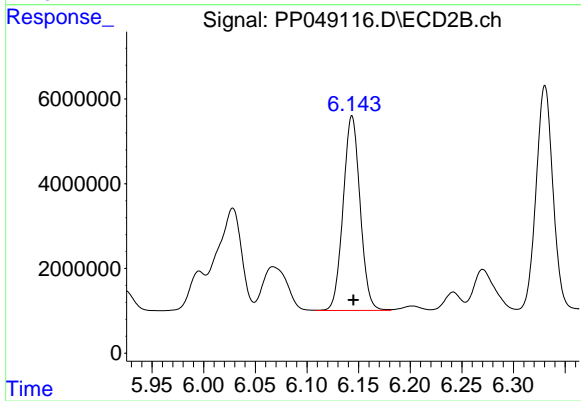
#7 AR-1016-5

R.T.: 5.116 min
Delta R.T.: -0.002 min
Response: 32292289
Conc: 432.88 ng/ml



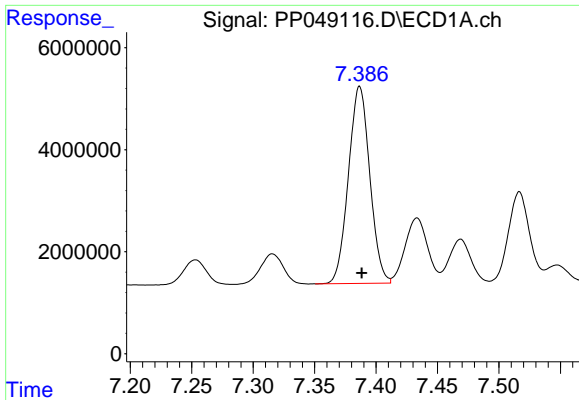
#31 AR-1260-1

R.T.: 7.128 min
Delta R.T.: -0.002 min
Response: 39578129
Conc: 544.04 ng/ml



#31 AR-1260-1

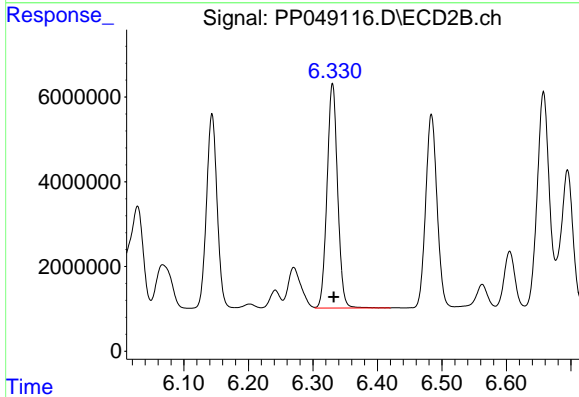
R.T.: 6.144 min
Delta R.T.: -0.002 min
Response: 52590494
Conc: 456.50 ng/ml



#32 AR-1260-2

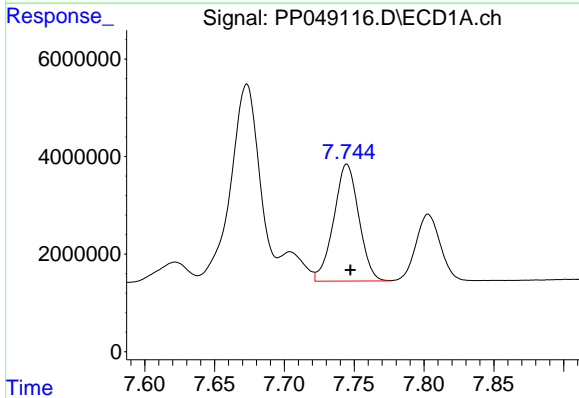
R.T.: 7.387 min
 Delta R.T.: -0.002 min
 Response: 46732959
 Conc: 555.26 ng/ml

Instrument :
 ECD_P
 ClientSampleId :
 PB145951BS



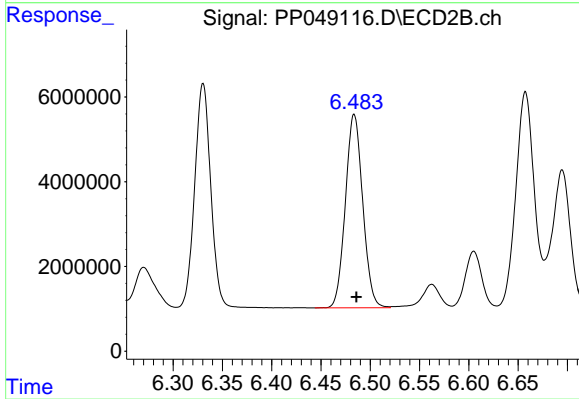
#32 AR-1260-2

R.T.: 6.330 min
 Delta R.T.: -0.002 min
 Response: 60391998
 Conc: 450.25 ng/ml



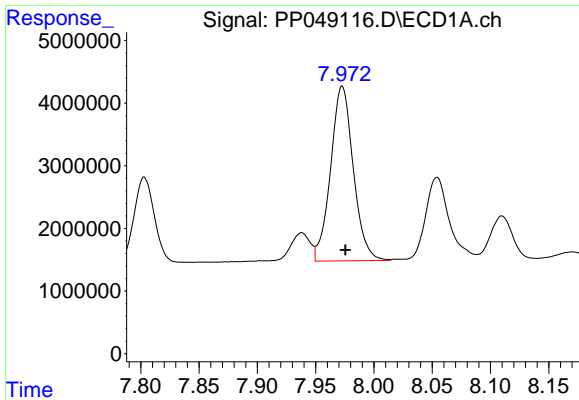
#33 AR-1260-3

R.T.: 7.745 min
 Delta R.T.: -0.002 min
 Response: 30042349
 Conc: 536.99 ng/ml



#33 AR-1260-3

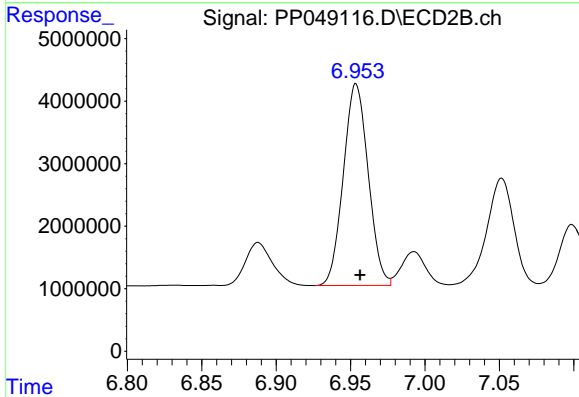
R.T.: 6.484 min
 Delta R.T.: -0.002 min
 Response: 55943656
 Conc: 459.56 ng/ml



#34 AR-1260-4

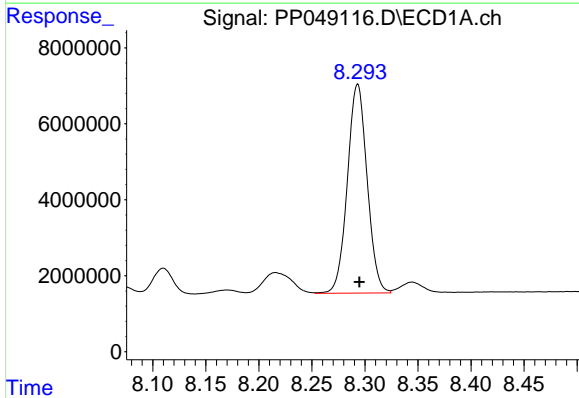
R.T.: 7.973 min
 Delta R.T.: -0.003 min
 Response: 37796350
 Conc: 540.46 ng/ml

Instrument :
 ECD_P
 ClientSampleId :
 PB145951BS



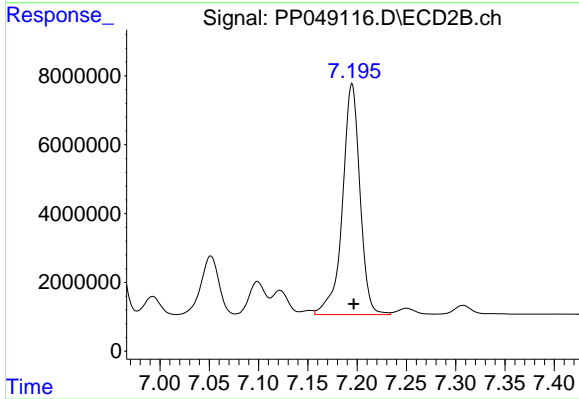
#34 AR-1260-4

R.T.: 6.954 min
 Delta R.T.: -0.003 min
 Response: 37548240
 Conc: 445.03 ng/ml



#35 AR-1260-5

R.T.: 8.293 min
 Delta R.T.: -0.002 min
 Response: 71177868
 Conc: 519.46 ng/ml



#35 AR-1260-5

R.T.: 7.195 min
 Delta R.T.: -0.002 min
 Response: 82893316
 Conc: 439.70 ng/ml