

Data Path : Z:\pestpcbsrv\HPCHEM1\ECD_P\Data\PP070122\
 Data File : PP049145.D
 Signal(s) : Signal #1: ECD1A.ch Signal #2: ECD2B.ch
 Acq On : 01 Jul 2022 14:51
 Operator : YP\AJ
 Sample : PB145982BS (Sig #1); PB145982BL (Sig #2)
 Misc :
 ALS Vial : 7 Sample Multiplier: 1

Instrument :
 ECD_P
 ClientSampleId :

Integration File signal 1: autoint1.e
 Integration File signal 2: autoint2.e
 Quant Time: Jul 01 17:28:58 2022
 Quant Method : Z:\pestpcbsrv\HPCHEM1\ECD_P\methods\PP062822.M
 Quant Title : GC EXTRACTABLES
 QLast Update : Wed Jun 29 09:37:18 2022
 Response via : Initial Calibration
 Integrator: ChemStation

Volume Inj. : 2 µl
 Signal #1 Phase : ZB-MR1 Signal #2 Phase: ZB-MR2
 Signal #1 Info : 30Mx0.32mmx 0.50µ Signal #2 Info : 30M x 0.32mm x 0.25µm

Compound	RT#1	RT#2	Resp#1	Resp#2	ng/ml	ng/ml
System Monitoring Compounds						
1) SA Tetrachlo...	4.351	3.595	30827344	52133918	21.685	20.360
2) SA Decachlor...	10.106	8.570	29811677	24492663	24.304	21.728
Target Compounds						
3) L1 AR-1016-1	5.529	4.671	26625844	41625700	506.460	456.075
4) L1 AR-1016-2	5.552	4.690	37268468	58137046	494.539	451.756
5) L1 AR-1016-3	5.613	4.865	23288402	31240415	478.381	422.182
6) L1 AR-1016-4	5.714	4.906	19678423	24867398	506.964	486.087
7) L1 AR-1016-5	6.008	5.118	19771201	31654417	518.206	424.331
8) L2 AR-1221-1	4.558	3.806	2526658	4358641	148.215	129.857
9) L2 AR-1221-2	4.651	3.892	3039130	5648723	237.727	220.044
10) L2 AR-1221-3	4.728	3.967	13259692	23122166	335.060	314.439
11) L3 AR-1232-1	4.728	3.967	13259692	23122166	348.738	332.827
12) L3 AR-1232-2	5.259	4.690	18506046	58137046	979.043	904.888
13) L3 AR-1232-3	5.552	4.865	37268468	31240415	1008.320	887.368
14) L3 AR-1232-4	5.714	4.947	19678423	30521752	1029.490	964.463
15) L3 AR-1232-5	5.802	5.118	17180629	31654417	1101.672	884.172
16) L4 AR-1242-1	5.529	4.671	26625844	41625700	657.048	578.781
17) L4 AR-1242-2	5.552	4.690	37268468	58137046	647.111	574.016
18) L4 AR-1242-3	5.613	4.865	23288402	31240415	643.240	560.417
19) L4 AR-1242-4	5.714	4.947	19678423	30521752	668.899	551.341
20) L4 AR-1242-5	6.453	5.469	2543667	24393895	76.225	350.382 #
21) L5 AR-1248-1	5.529	4.671	26625844	41625700	827.955	716.172
22) L5 AR-1248-2	5.802	4.906	17180629	24867398	369.578	370.545
23) L5 AR-1248-3	6.008	4.947	19771201	30521752	369.214	372.405
24) L5 AR-1248-4	6.415	5.118	3038446	31654417	49.165	320.877 #
25) L5 AR-1248-5	6.453	5.509	2543667	3907923	44.120	38.957
26) L6 AR-1254-1	6.385	5.469	15174064	24393895	225.105	166.160 #
27) L6 AR-1254-2	6.604	5.615	16767309	23008404	178.778	184.424
28) L6 AR-1254-3	6.976	6.031f	9162097	38165390	90.295	211.964 #
29) L6 AR-1254-4	7.261	6.245	5772832	4429645	76.946	40.944 #
30) L6 AR-1254-5	7.682	6.660	54831864	63588815	649.913	438.120 #
31) L7 AR-1260-1	7.136	6.146	36811912	50564817	506.020	438.917
32) L7 AR-1260-2	7.395	6.334	44220575	58089258	525.409	433.079
33) L7 AR-1260-3	7.753	6.487	28397151	53857200	507.583	442.421
34) L7 AR-1260-4	7.981	6.958	35522265	35448896	507.944	420.151
35) L7 AR-1260-5	8.302	7.198	66188109	80035553	483.047	424.540
36) L8 AR-1262-1	7.753	6.698	28397151	39378770	302.963	296.027
37) L8 AR-1262-2	8.302	6.958	66188109	35448896	386.782	312.822
38) L8 AR-1262-3	0.000	7.481	0	16089271	N.D.	197.468 #
39) L8 AR-1262-4	8.683	7.544	24450584	54291459	520.929	372.453 #
40) L8 AR-1262-5	9.362	8.037	16653670	15033451	275.446	249.244
41) L9 AR-1268-1	0.000	7.481	0	16089271	N.D.	74.791 #

Data Path : Z:\pestpcbsrv\HPCHEM1\ECD_P\Data\PP070122\
 Data File : PP049145.D
 Signal(s) : Signal #1: ECD1A.ch Signal #2: ECD2B.ch
 Acq On : 01 Jul 2022 14:51
 Operator : YP\AJ
 Sample : PB145982BS (Sig #1); PB145982BL (Sig #2)
 Misc :
 ALS Vial : 7 Sample Multiplier: 1

Instrument :
 ECD_P
 ClientSampleId :

Integration File signal 1: autoint1.e
 Integration File signal 2: autoint2.e
 Quant Time: Jul 01 17:28:58 2022
 Quant Method : Z:\pestpcbsrv\HPCHEM1\ECD_P\methods\PP062822.M
 Quant Title : GC EXTRACTABLES
 QLast Update : Wed Jun 29 09:37:18 2022
 Response via : Initial Calibration
 Integrator: ChemStation

Volume Inj. : 2 µl
 Signal #1 Phase : ZB-MR1 Signal #2 Phase: ZB-MR2
 Signal #1 Info : 30Mx0.32mmx 0.50µ Signal #2 Info : 30M x 0.32mm x 0.25µm

	Compound	RT#1	RT#2	Resp#1	Resp#2	ng/ml	ng/ml
42)	L9 AR-1268-2	8.683	7.544	24450584	54291459	139.748	283.820 #
43)	L9 AR-1268-3	8.929	7.751	1455888	1663285	10.163	10.921
44)	L9 AR-1268-4	9.362	8.037	16653670	15033451	259.969	235.888
45)	L9 AR-1268-5	9.772	8.321	5224754	4629232	11.328	11.602

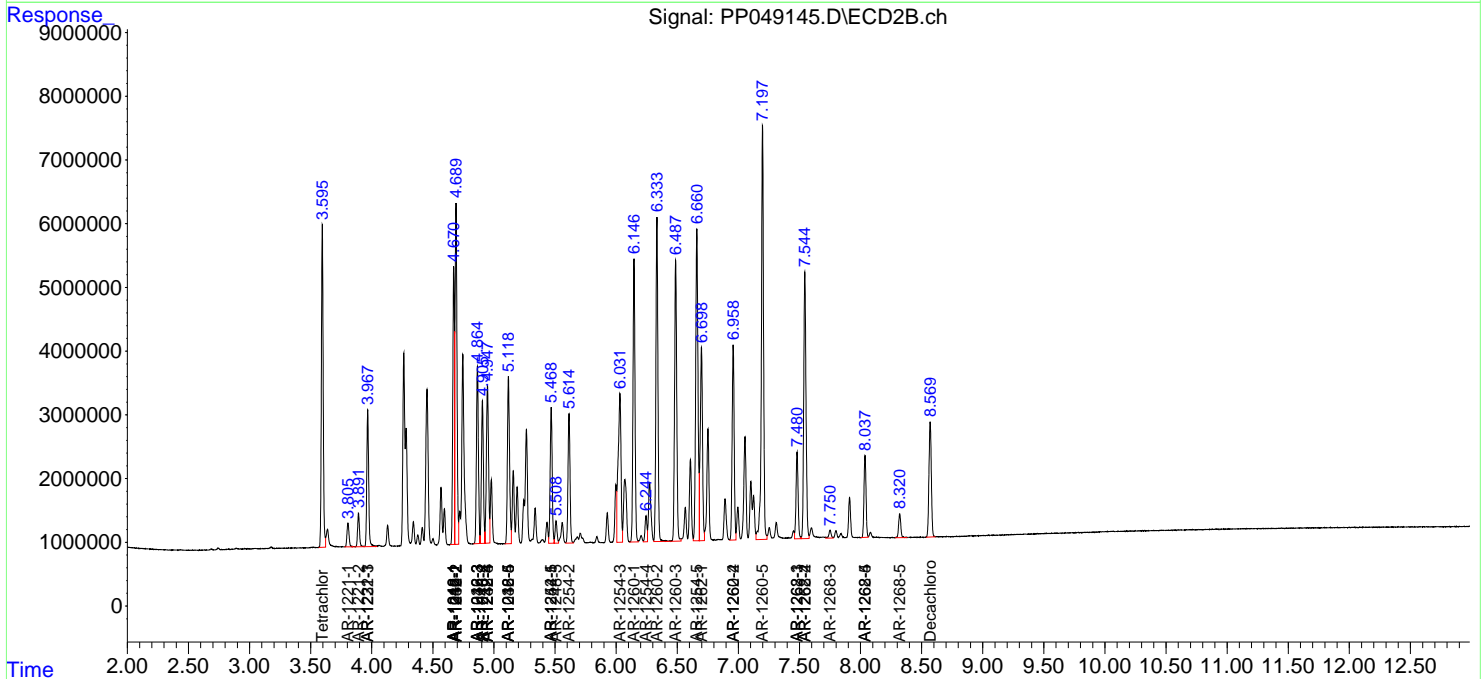
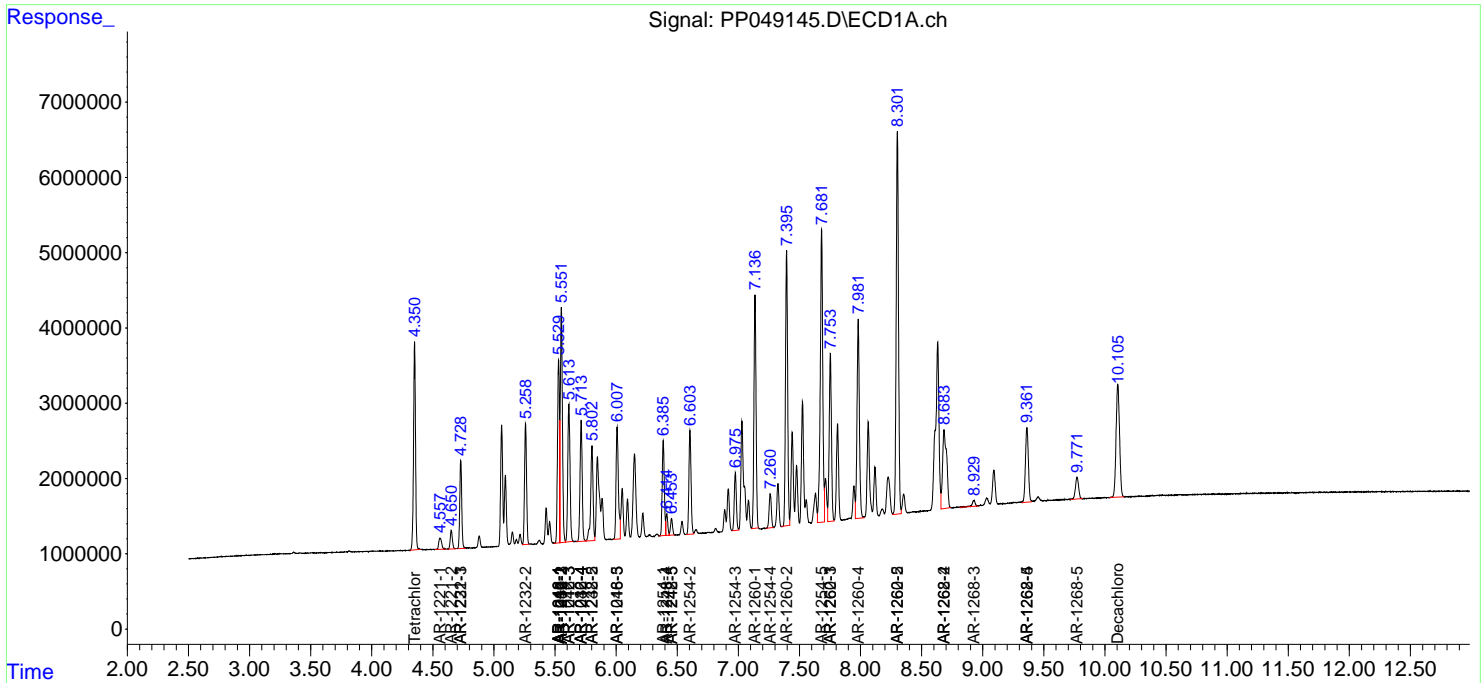
(f)=RT Delta > 1/2 Window (#)=Amounts differ by > 25% (m)=manual int.

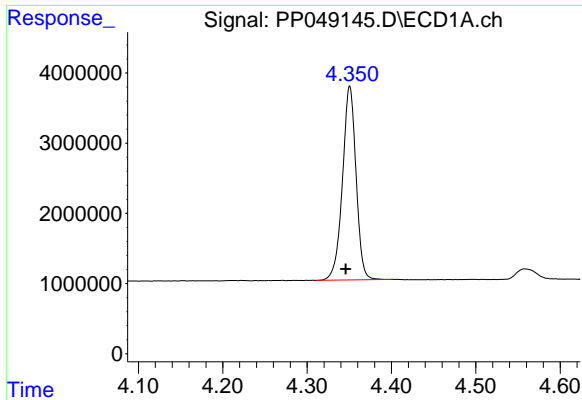
Data Path : Z:\pestpcbsrv\HPCHEM1\ECD_P\Data\PP070122\
 Data File : PP049145.D
 Signal(s) : Signal #1: ECD1A.ch Signal #2: ECD2B.ch
 Acq On : 01 Jul 2022 14:51
 Operator : YP\AJ
 Sample : PB145982BS (Sig #1); PB145982BL (Sig #2)
 Misc :
 ALS Vial : 7 Sample Multiplier: 1

Instrument :
 ECD_P
 ClientSampleId :

Integration File signal 1: autoint1.e
 Integration File signal 2: autoint2.e
 Quant Time: Jul 01 17:28:58 2022
 Quant Method : Z:\pestpcbsrv\HPCHEM1\ECD_P\methods\PP062822.M
 Quant Title : GC EXTRACTABLES
 QLast Update : Wed Jun 29 09:37:18 2022
 Response via : Initial Calibration
 Integrator: ChemStation

Volume Inj. : 2 µl
 Signal #1 Phase : ZB-MR1 Signal #2 Phase: ZB-MR2
 Signal #1 Info : 30Mx0.32mmx 0.50µ Signal #2 Info : 30M x 0.32mm x 0.25µm

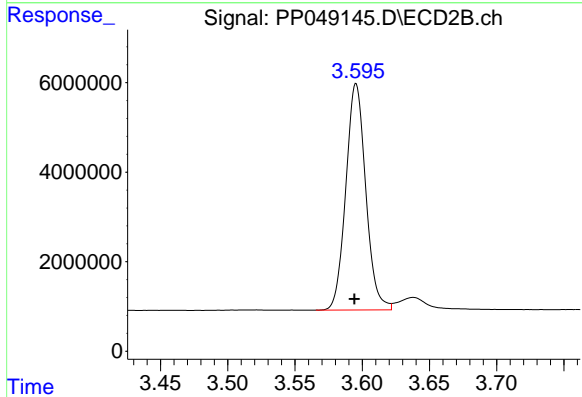




#1 Tetrachloro-m-xylene

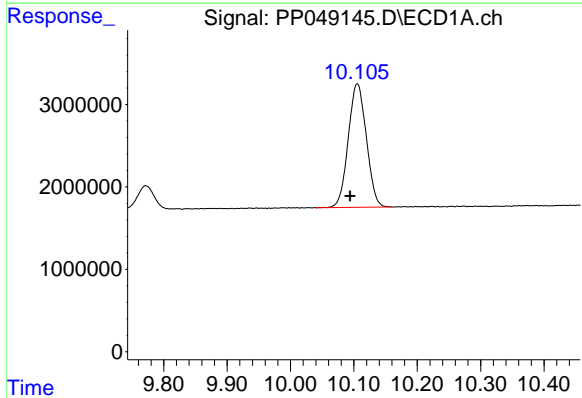
R.T.: 4.351 min
 Delta R.T.: 0.005 min
 Response: 30827344
 Conc: 21.69 ng/ml

Instrument :
 ECD_P
 ClientSampleId :



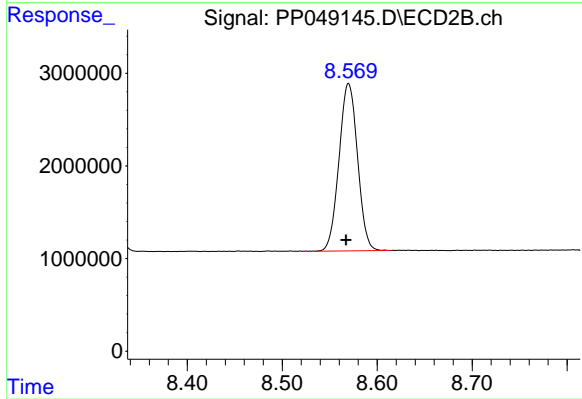
#1 Tetrachloro-m-xylene

R.T.: 3.595 min
 Delta R.T.: 0.001 min
 Response: 52133918
 Conc: 20.36 ng/ml



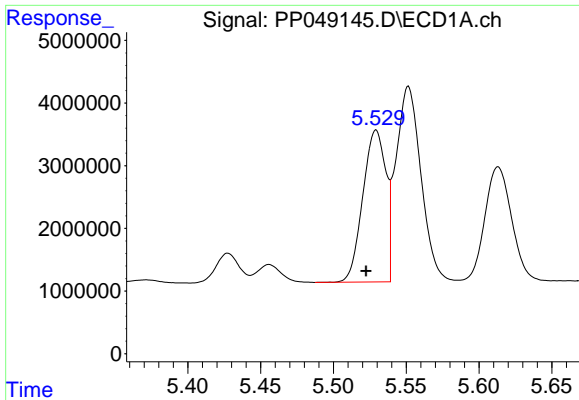
#2 Decachlorobiphenyl

R.T.: 10.106 min
 Delta R.T.: 0.011 min
 Response: 29811677
 Conc: 24.30 ng/ml



#2 Decachlorobiphenyl

R.T.: 8.570 min
 Delta R.T.: 0.002 min
 Response: 24492663
 Conc: 21.73 ng/ml

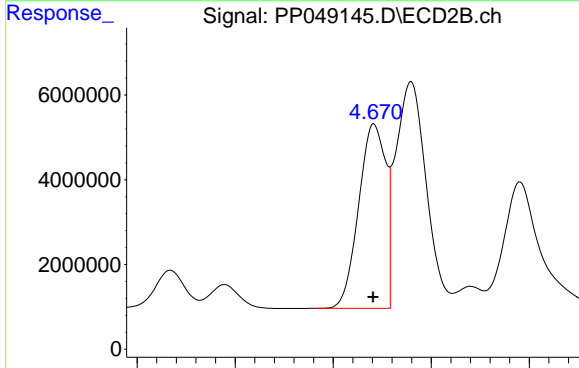


#3 AR-1016-1

R.T.: 5.529 min
 Delta R.T.: 0.007 min
 Response: 26625844
 Conc: 506.46 ng/ml

Instrument :
 ECD_P
 ClientSampleId :

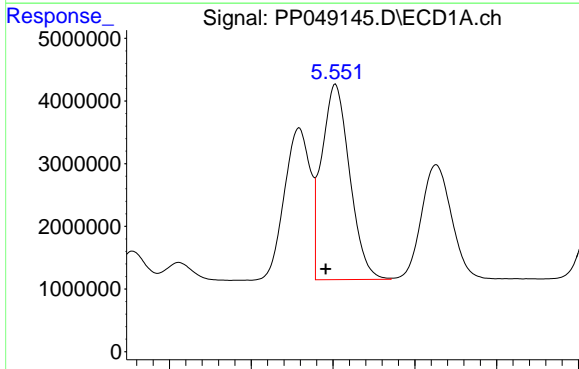
Time



#3 AR-1016-1

R.T.: 4.671 min
 Delta R.T.: 0.000 min
 Response: 41625700
 Conc: 456.08 ng/ml

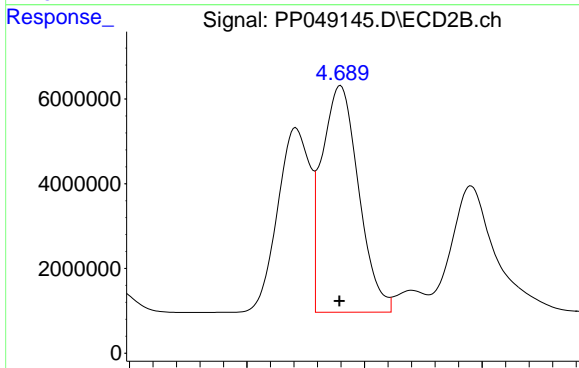
Time



#4 AR-1016-2

R.T.: 5.552 min
 Delta R.T.: 0.006 min
 Response: 37268468
 Conc: 494.54 ng/ml

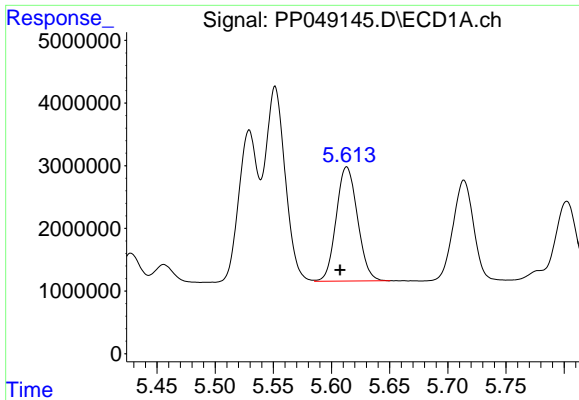
Time



#4 AR-1016-2

R.T.: 4.690 min
 Delta R.T.: 0.000 min
 Response: 58137046
 Conc: 451.76 ng/ml

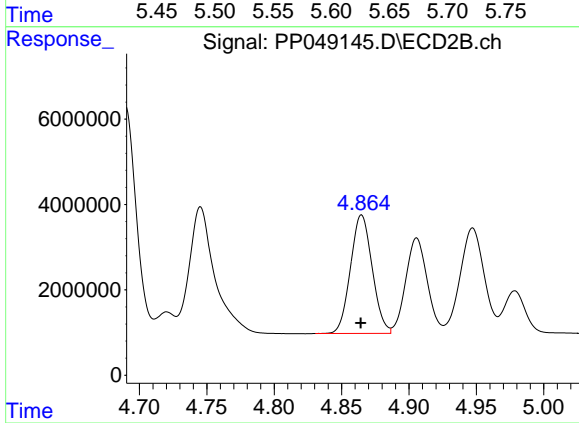
Time



#5 AR-1016-3

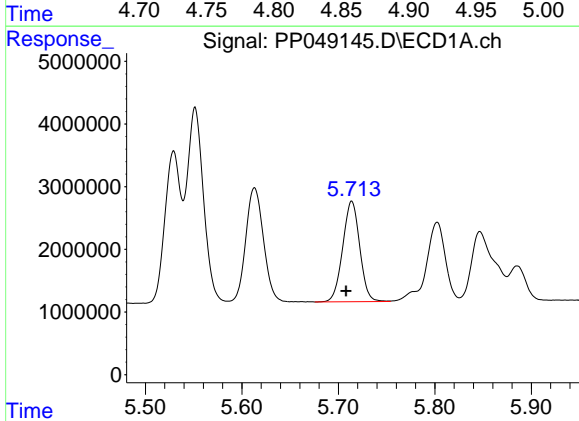
R.T.: 5.613 min
 Delta R.T.: 0.006 min
 Response: 23288402
 Conc: 478.38 ng/ml

Instrument :
 ECD_P
 ClientSampleId :



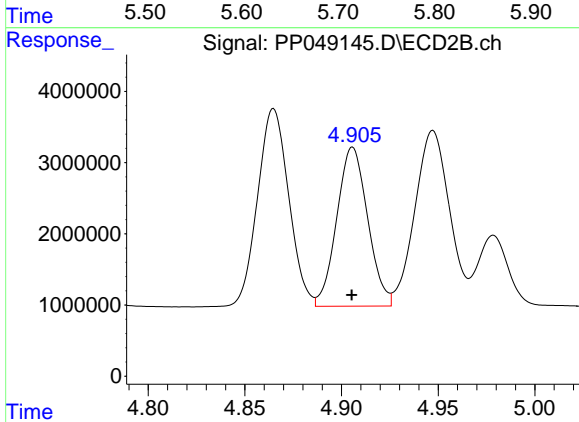
#5 AR-1016-3

R.T.: 4.865 min
 Delta R.T.: 0.000 min
 Response: 31240415
 Conc: 422.18 ng/ml



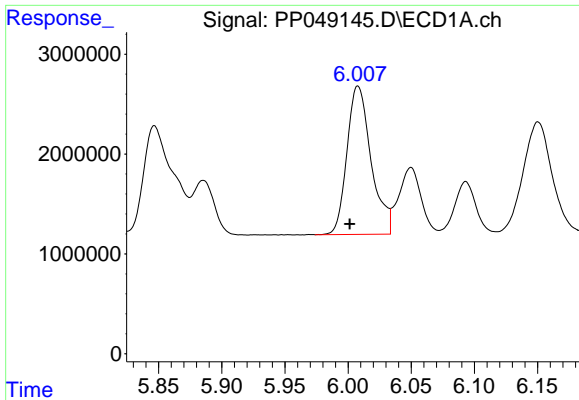
#6 AR-1016-4

R.T.: 5.714 min
 Delta R.T.: 0.006 min
 Response: 19678423
 Conc: 506.96 ng/ml



#6 AR-1016-4

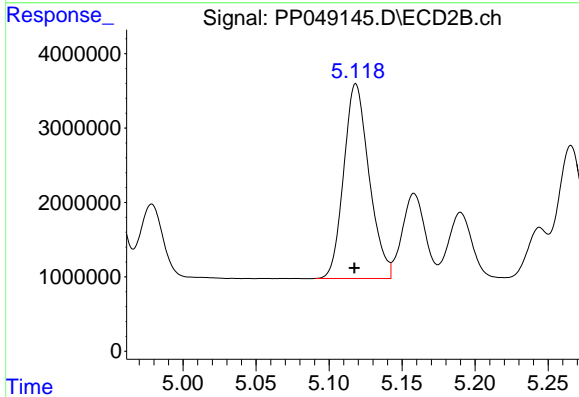
R.T.: 4.906 min
 Delta R.T.: 0.000 min
 Response: 24867398
 Conc: 486.09 ng/ml



#7 AR-1016-5

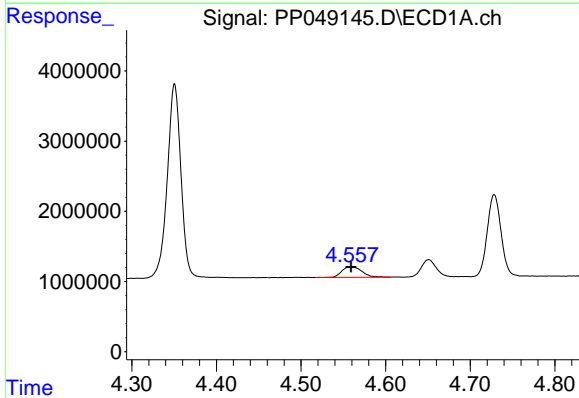
R.T.: 6.008 min
 Delta R.T.: 0.006 min
 Response: 19771201
 Conc: 518.21 ng/ml

Instrument :
 ECD_P
 ClientSampleId :



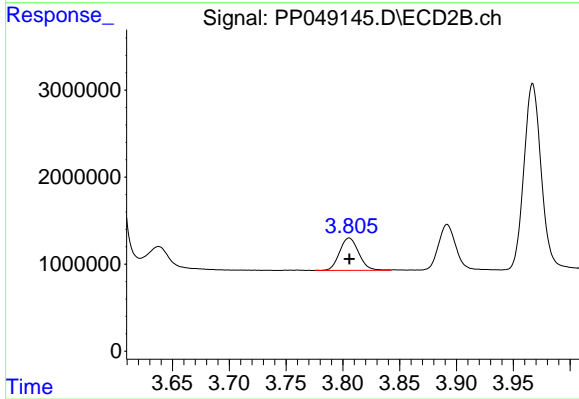
#7 AR-1016-5

R.T.: 5.118 min
 Delta R.T.: 0.001 min
 Response: 31654417
 Conc: 424.33 ng/ml



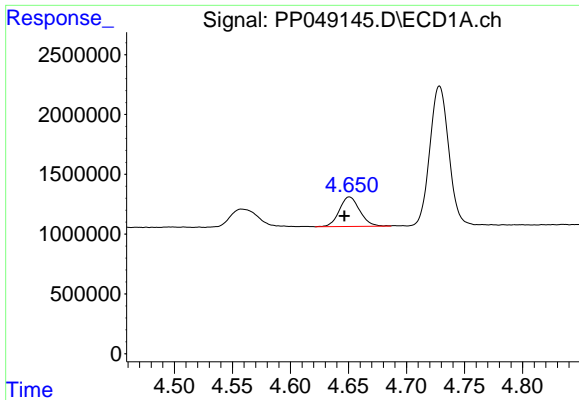
#8 AR-1221-1

R.T.: 4.558 min
 Delta R.T.: 0.000 min
 Response: 2526658
 Conc: 148.22 ng/ml



#8 AR-1221-1

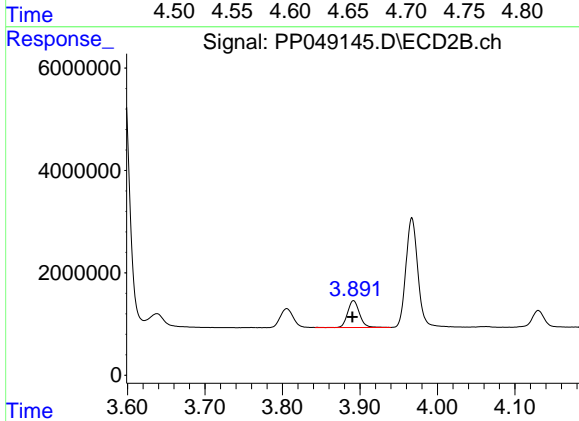
R.T.: 3.806 min
 Delta R.T.: 0.000 min
 Response: 4358641
 Conc: 129.86 ng/ml



#9 AR-1221-2

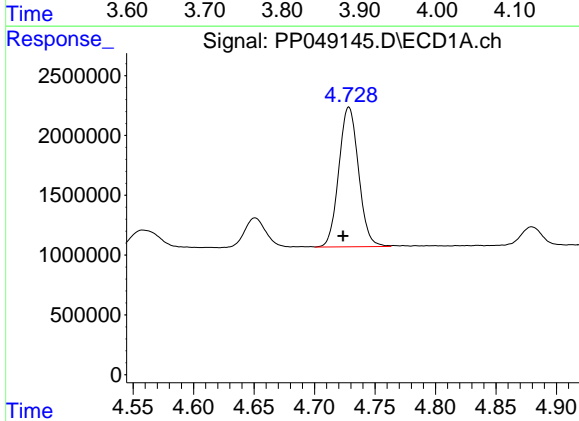
R.T.: 4.651 min
Delta R.T.: 0.005 min
Response: 3039130
Conc: 237.73 ng/ml

Instrument :
ECD_P
ClientSampleId :



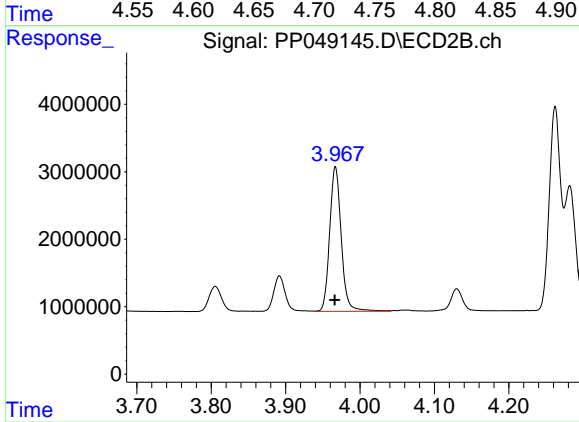
#9 AR-1221-2

R.T.: 3.892 min
Delta R.T.: 0.001 min
Response: 5648723
Conc: 220.04 ng/ml



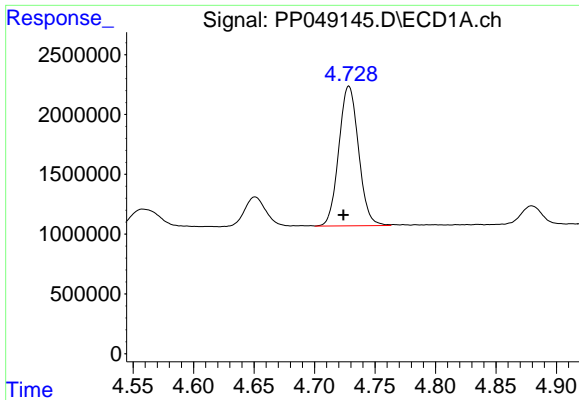
#10 AR-1221-3

R.T.: 4.728 min
Delta R.T.: 0.005 min
Response: 13259692
Conc: 335.06 ng/ml



#10 AR-1221-3

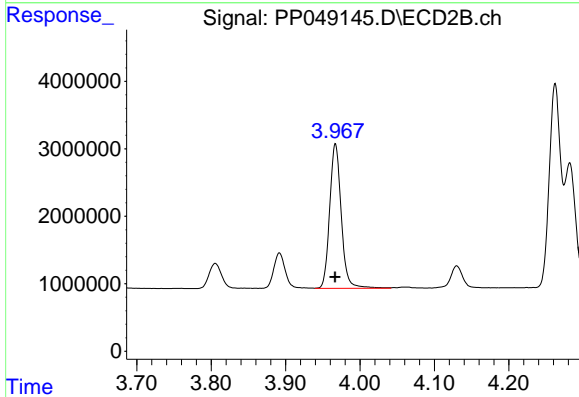
R.T.: 3.967 min
Delta R.T.: 0.000 min
Response: 23122166
Conc: 314.44 ng/ml



#11 AR-1232-1

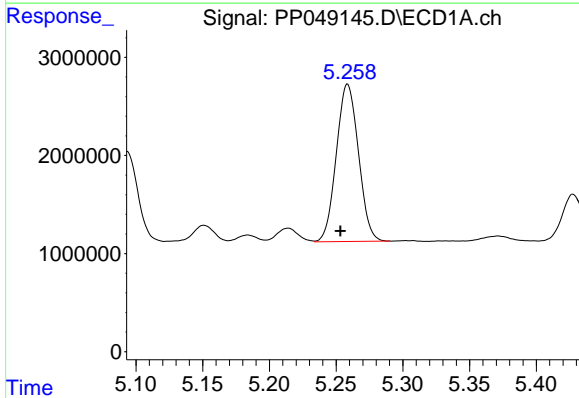
R.T.: 4.728 min
 Delta R.T.: 0.004 min
 Response: 13259692
 Conc: 348.74 ng/ml

Instrument :
 ECD_P
 ClientSampleId :



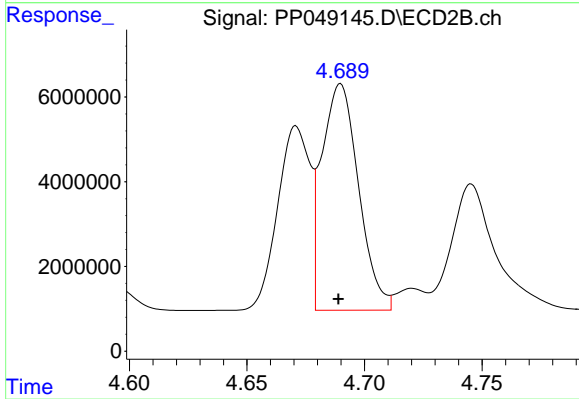
#11 AR-1232-1

R.T.: 3.967 min
 Delta R.T.: 0.000 min
 Response: 23122166
 Conc: 332.83 ng/ml



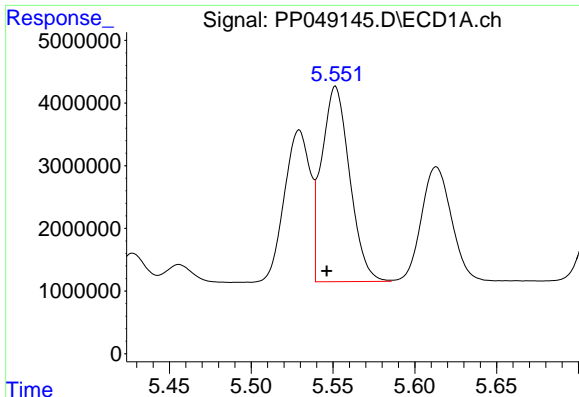
#12 AR-1232-2

R.T.: 5.259 min
 Delta R.T.: 0.005 min
 Response: 18506046
 Conc: 979.04 ng/ml



#12 AR-1232-2

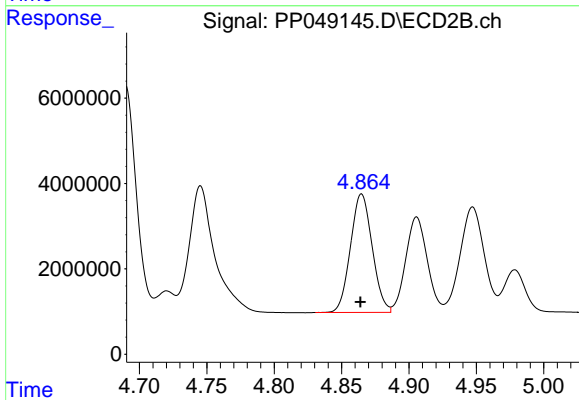
R.T.: 4.690 min
 Delta R.T.: 0.000 min
 Response: 58137046
 Conc: 904.89 ng/ml



#13 AR-1232-3

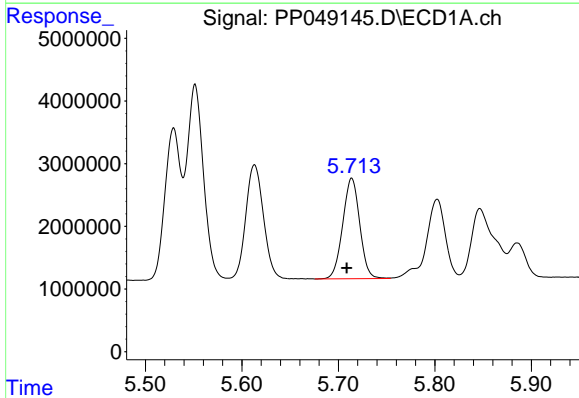
R.T.: 5.552 min
 Delta R.T.: 0.005 min
 Response: 37268468
 Conc: 1008.32 ng/ml

Instrument :
 ECD_P
 ClientSampleId :



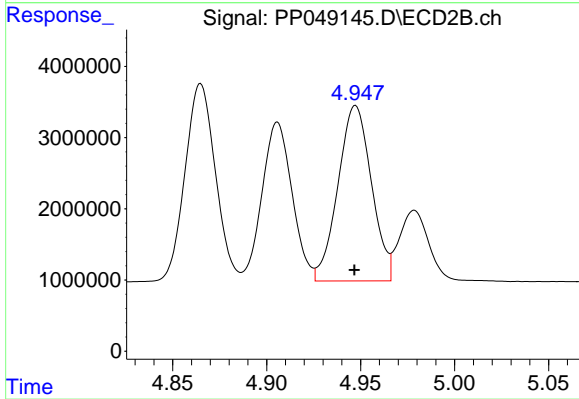
#13 AR-1232-3

R.T.: 4.865 min
 Delta R.T.: 0.000 min
 Response: 31240415
 Conc: 887.37 ng/ml



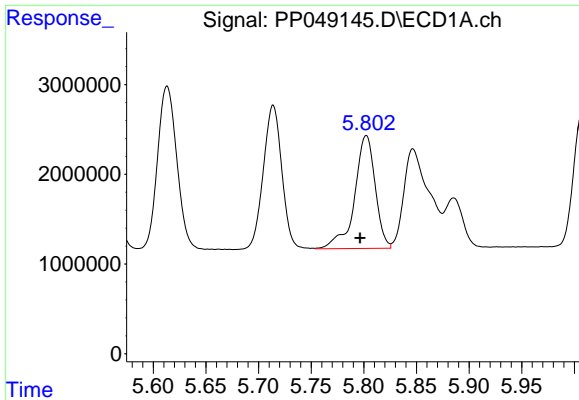
#14 AR-1232-4

R.T.: 5.714 min
 Delta R.T.: 0.005 min
 Response: 19678423
 Conc: 1029.49 ng/ml



#14 AR-1232-4

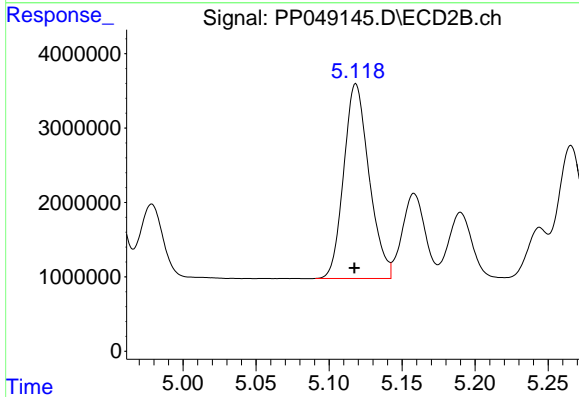
R.T.: 4.947 min
 Delta R.T.: 0.000 min
 Response: 30521752
 Conc: 964.46 ng/ml



#15 AR-1232-5

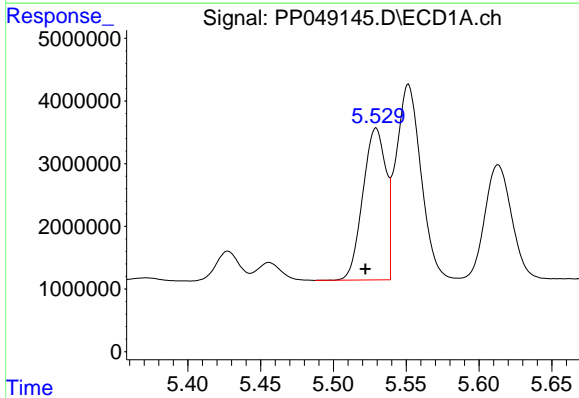
R.T.: 5.802 min
 Delta R.T.: 0.006 min
 Response: 17180629
 Conc: 1101.67 ng/ml

Instrument :
 ECD_P
 ClientSampleId :



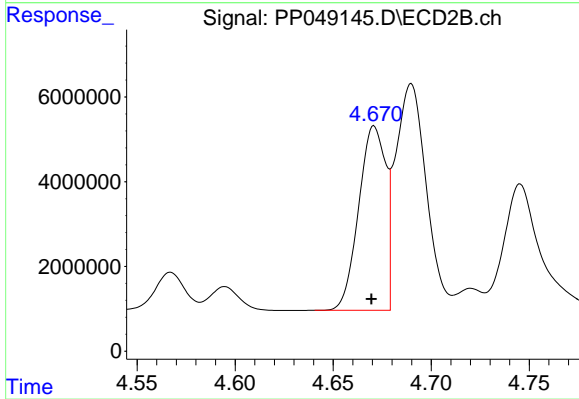
#15 AR-1232-5

R.T.: 5.118 min
 Delta R.T.: 0.000 min
 Response: 31654417
 Conc: 884.17 ng/ml



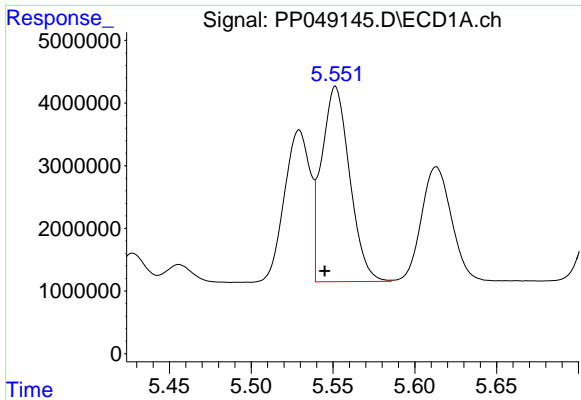
#16 AR-1242-1

R.T.: 5.529 min
 Delta R.T.: 0.007 min
 Response: 26625844
 Conc: 657.05 ng/ml



#16 AR-1242-1

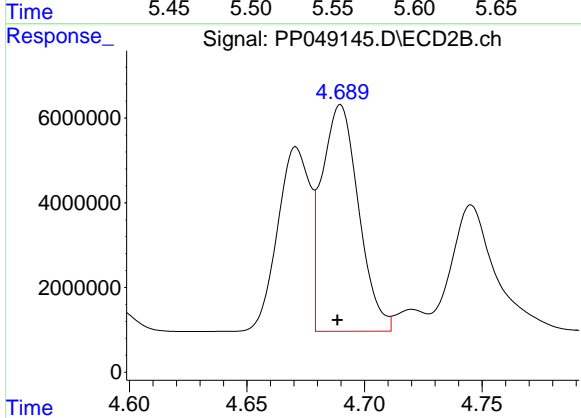
R.T.: 4.671 min
 Delta R.T.: 0.001 min
 Response: 41625700
 Conc: 578.78 ng/ml



#17 AR-1242-2

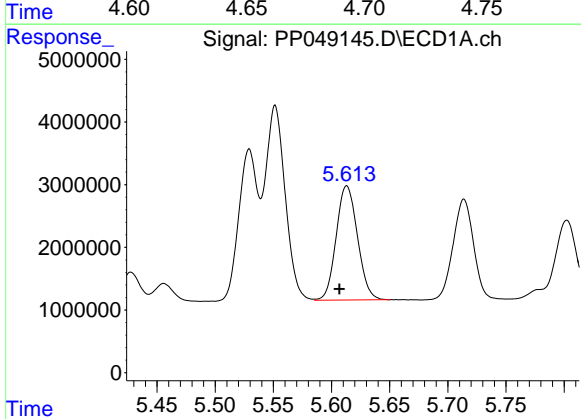
R.T.: 5.552 min
 Delta R.T.: 0.007 min
 Response: 37268468
 Conc: 647.11 ng/ml

Instrument :
 ECD_P
 ClientSampleId :



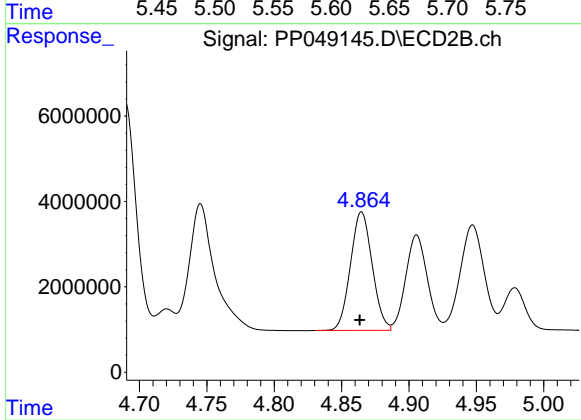
#17 AR-1242-2

R.T.: 4.690 min
 Delta R.T.: 0.001 min
 Response: 58137046
 Conc: 574.02 ng/ml



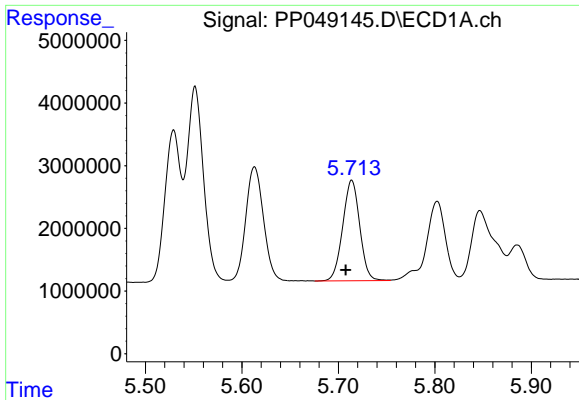
#18 AR-1242-3

R.T.: 5.613 min
 Delta R.T.: 0.006 min
 Response: 23288402
 Conc: 643.24 ng/ml



#18 AR-1242-3

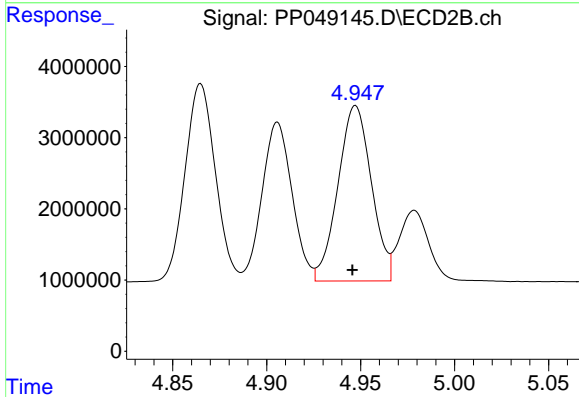
R.T.: 4.865 min
 Delta R.T.: 0.001 min
 Response: 31240415
 Conc: 560.42 ng/ml



#19 AR-1242-4

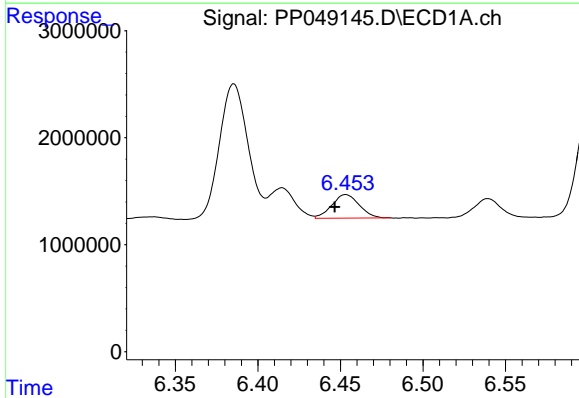
R.T.: 5.714 min
 Delta R.T.: 0.006 min
 Response: 19678423
 Conc: 668.90 ng/ml

Instrument :
 ECD_P
 ClientSampleId :



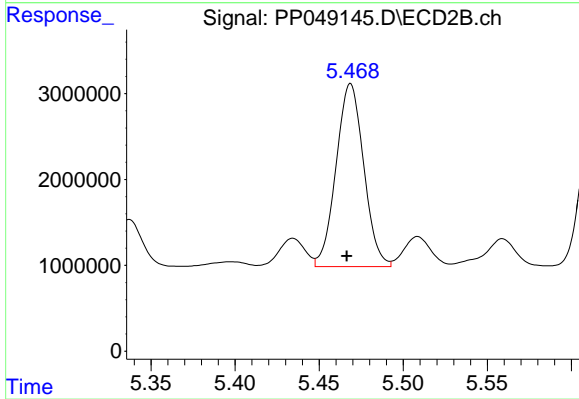
#19 AR-1242-4

R.T.: 4.947 min
 Delta R.T.: 0.002 min
 Response: 30521752
 Conc: 551.34 ng/ml



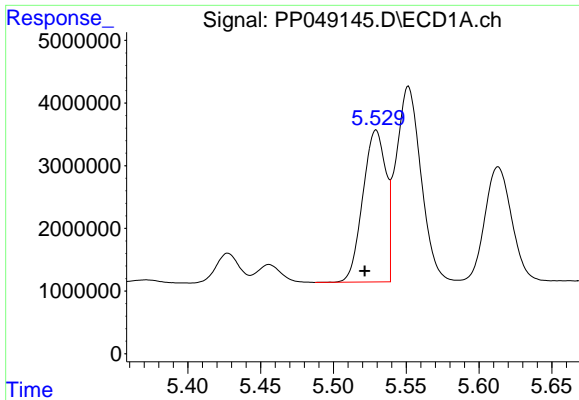
#20 AR-1242-5

R.T.: 6.453 min
 Delta R.T.: 0.007 min
 Response: 2543667
 Conc: 76.23 ng/ml



#20 AR-1242-5

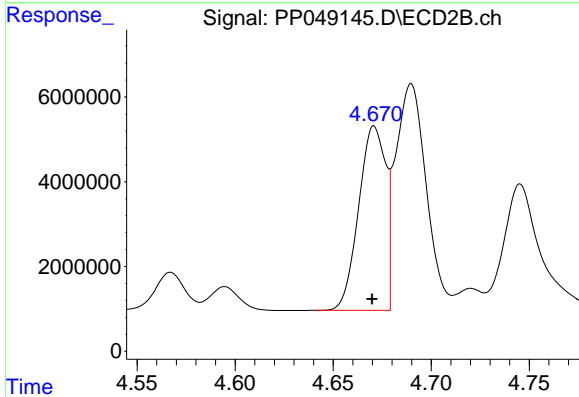
R.T.: 5.469 min
 Delta R.T.: 0.002 min
 Response: 24393895
 Conc: 350.38 ng/ml



#21 AR-1248-1

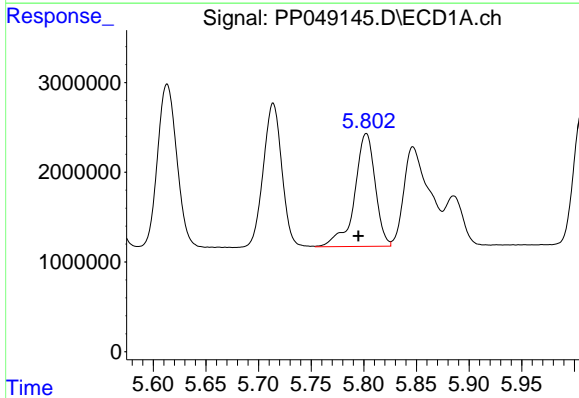
R.T.: 5.529 min
 Delta R.T.: 0.008 min
 Response: 26625844
 Conc: 827.95 ng/ml

Instrument :
 ECD_P
 ClientSampleId :



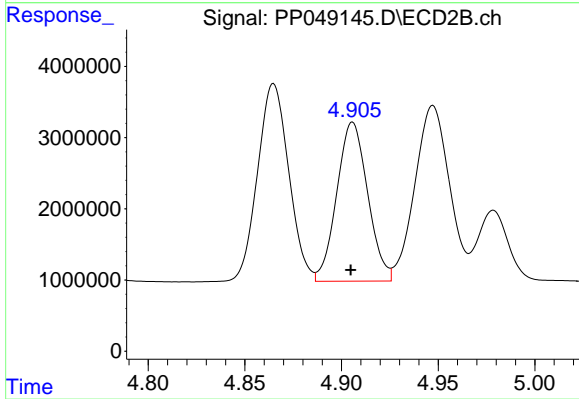
#21 AR-1248-1

R.T.: 4.671 min
 Delta R.T.: 0.000 min
 Response: 41625700
 Conc: 716.17 ng/ml



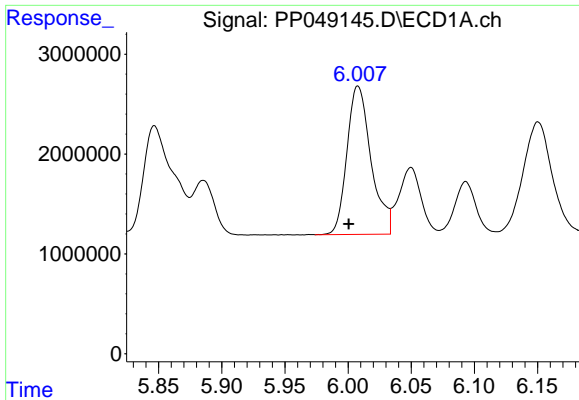
#22 AR-1248-2

R.T.: 5.802 min
 Delta R.T.: 0.008 min
 Response: 17180629
 Conc: 369.58 ng/ml



#22 AR-1248-2

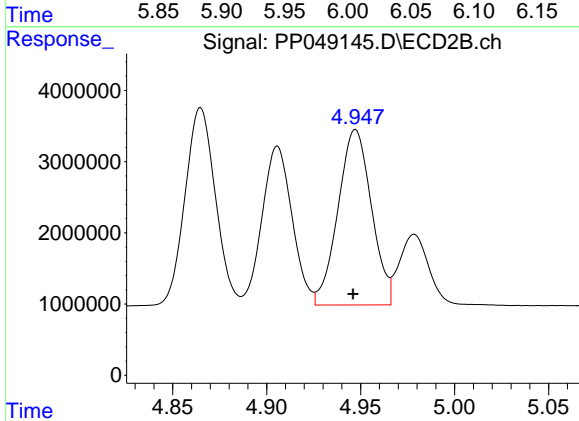
R.T.: 4.906 min
 Delta R.T.: 0.000 min
 Response: 24867398
 Conc: 370.55 ng/ml



#23 AR-1248-3

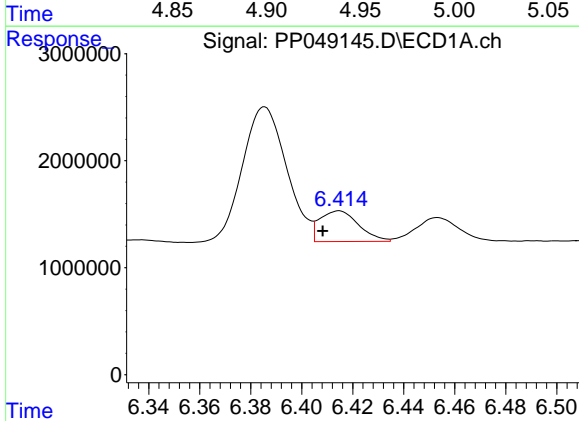
R.T.: 6.008 min
 Delta R.T.: 0.007 min
 Response: 19771201
 Conc: 369.21 ng/ml

Instrument :
 ECD_P
 ClientSampleId :



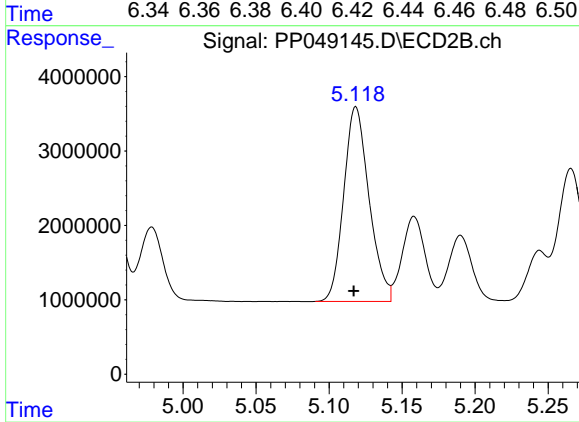
#23 AR-1248-3

R.T.: 4.947 min
 Delta R.T.: 0.001 min
 Response: 30521752
 Conc: 372.41 ng/ml



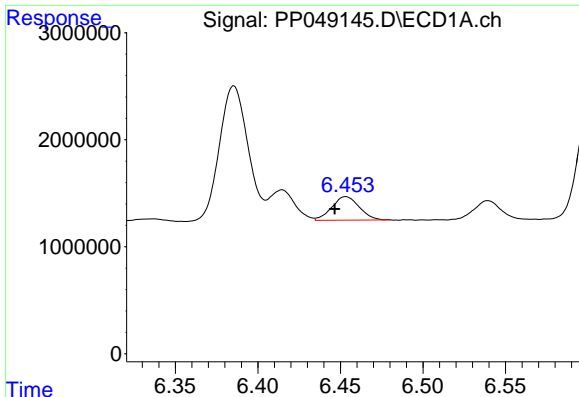
#24 AR-1248-4

R.T.: 6.415 min
 Delta R.T.: 0.006 min
 Response: 3038446
 Conc: 49.17 ng/ml



#24 AR-1248-4

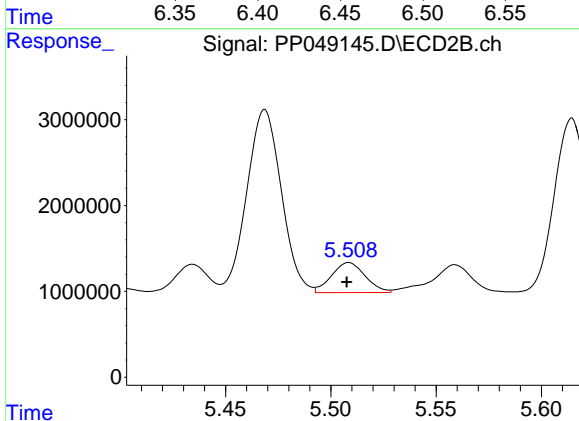
R.T.: 5.118 min
 Delta R.T.: 0.001 min
 Response: 31654417
 Conc: 320.88 ng/ml



#25 AR-1248-5

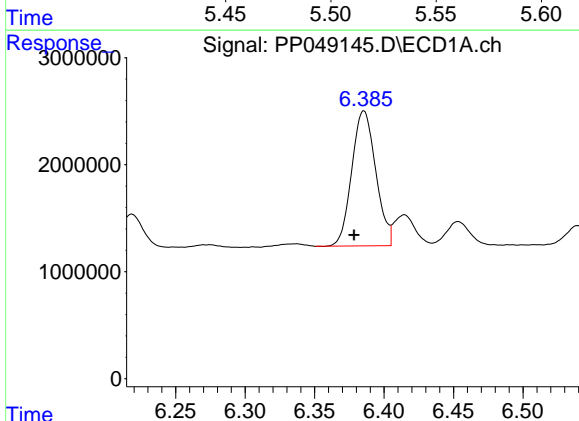
R.T.: 6.453 min
 Delta R.T.: 0.007 min
 Response: 2543667
 Conc: 44.12 ng/ml

Instrument :
 ECD_P
 ClientSampleId :



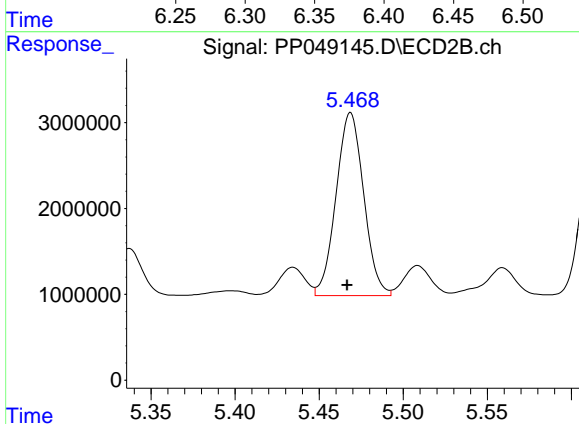
#25 AR-1248-5

R.T.: 5.509 min
 Delta R.T.: 0.000 min
 Response: 3907923
 Conc: 38.96 ng/ml



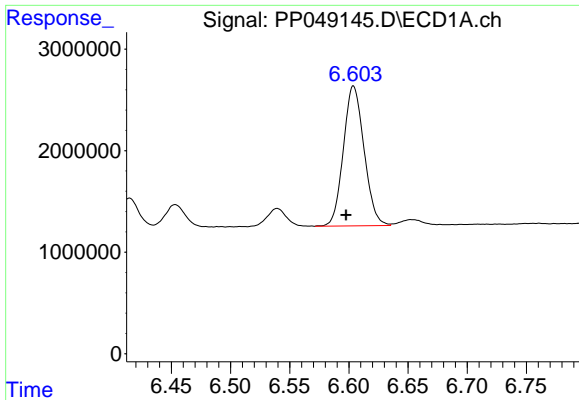
#26 AR-1254-1

R.T.: 6.385 min
 Delta R.T.: 0.007 min
 Response: 15174064
 Conc: 225.11 ng/ml



#26 AR-1254-1

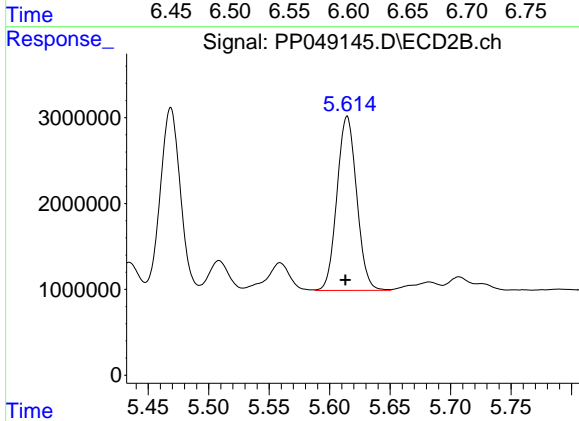
R.T.: 5.469 min
 Delta R.T.: 0.002 min
 Response: 24393895
 Conc: 166.16 ng/ml



#27 AR-1254-2

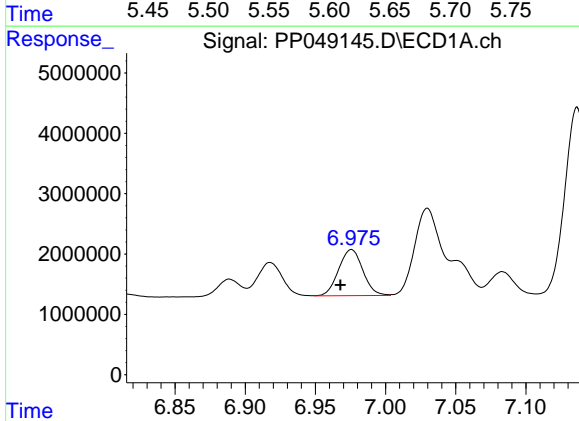
R.T.: 6.604 min
 Delta R.T.: 0.006 min
 Response: 16767309
 Conc: 178.78 ng/ml

Instrument :
 ECD_P
 ClientSampleId :



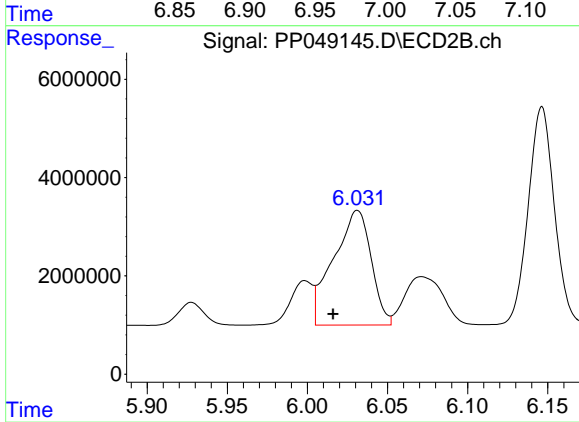
#27 AR-1254-2

R.T.: 5.615 min
 Delta R.T.: 0.002 min
 Response: 23008404
 Conc: 184.42 ng/ml



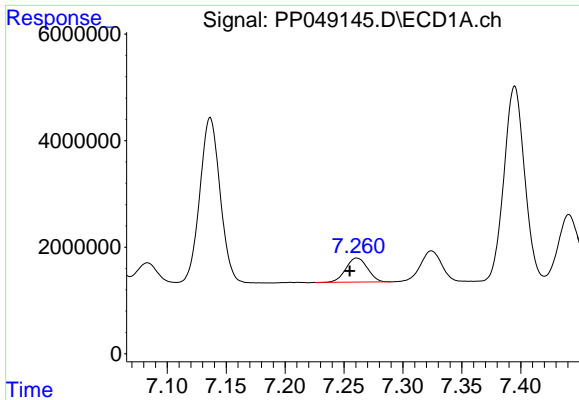
#28 AR-1254-3

R.T.: 6.976 min
 Delta R.T.: 0.008 min
 Response: 9162097
 Conc: 90.29 ng/ml



#28 AR-1254-3

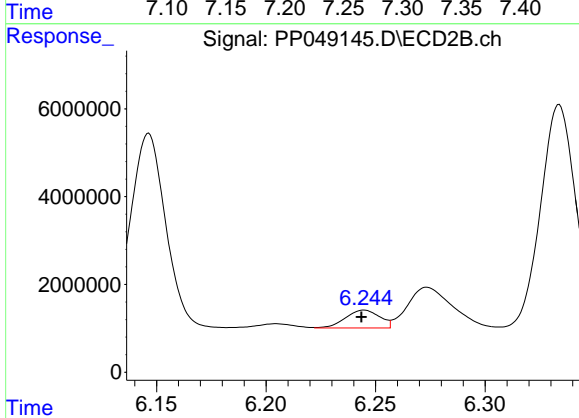
R.T.: 6.031 min
 Delta R.T.: 0.015 min
 Response: 38165390
 Conc: 211.96 ng/ml



#29 AR-1254-4

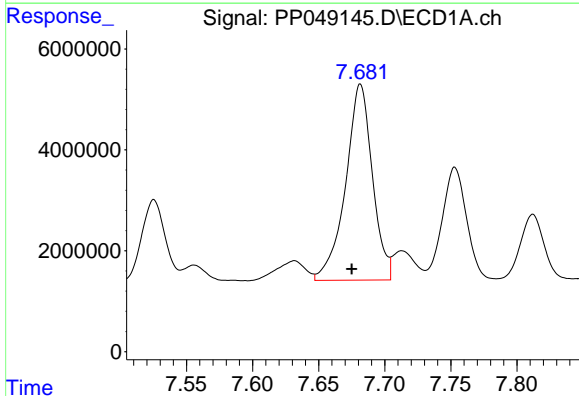
R.T.: 7.261 min
 Delta R.T.: 0.006 min
 Response: 5772832
 Conc: 76.95 ng/ml

Instrument :
 ECD_P
 ClientSampleId :



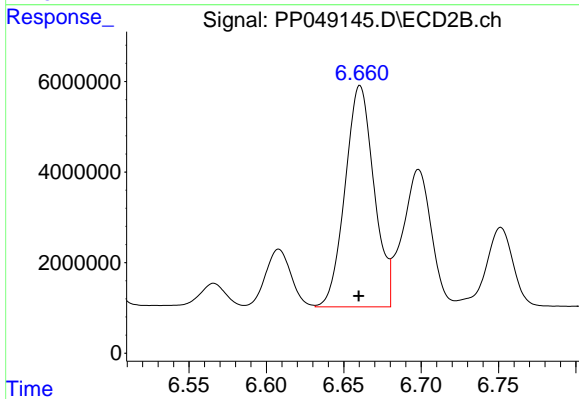
#29 AR-1254-4

R.T.: 6.245 min
 Delta R.T.: 0.001 min
 Response: 4429645
 Conc: 40.94 ng/ml



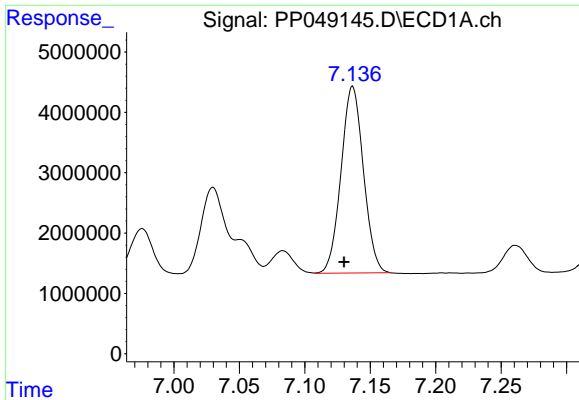
#30 AR-1254-5

R.T.: 7.682 min
 Delta R.T.: 0.006 min
 Response: 54831864
 Conc: 649.91 ng/ml



#30 AR-1254-5

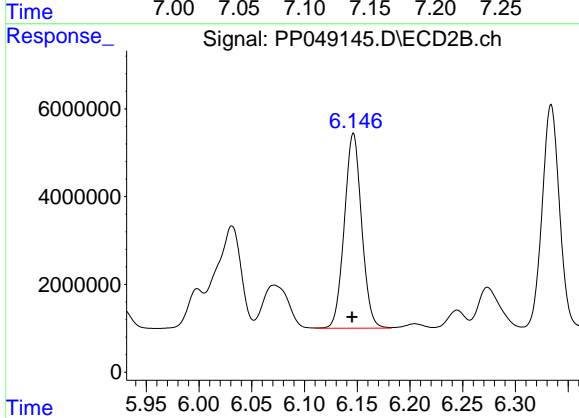
R.T.: 6.660 min
 Delta R.T.: 0.000 min
 Response: 63588815
 Conc: 438.12 ng/ml



#31 AR-1260-1

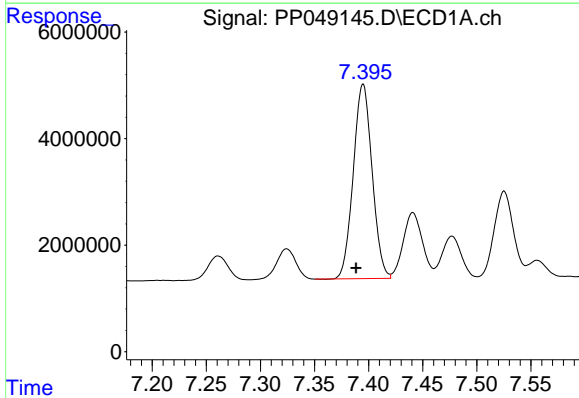
R.T.: 7.136 min
 Delta R.T.: 0.006 min
 Response: 36811912
 Conc: 506.02 ng/ml

Instrument :
 ECD_P
 ClientSampleId :



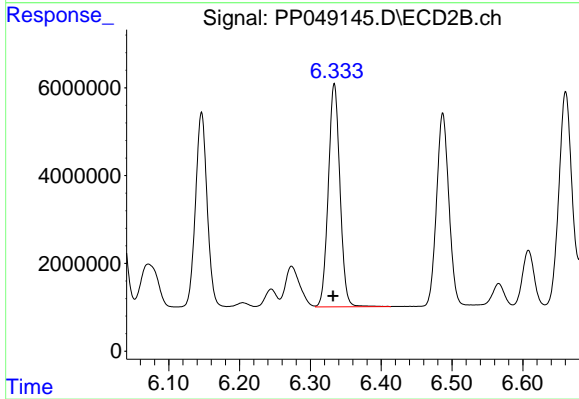
#31 AR-1260-1

R.T.: 6.146 min
 Delta R.T.: 0.001 min
 Response: 50564817
 Conc: 438.92 ng/ml



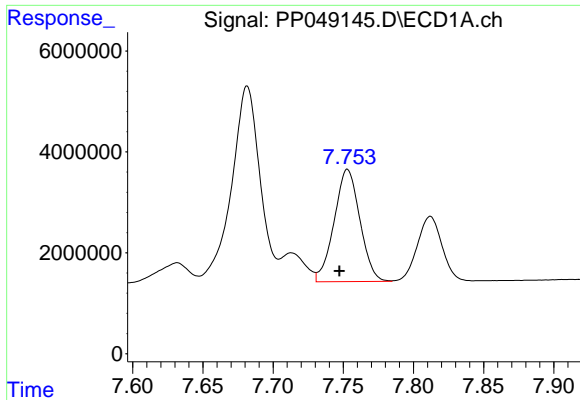
#32 AR-1260-2

R.T.: 7.395 min
 Delta R.T.: 0.006 min
 Response: 44220575
 Conc: 525.41 ng/ml



#32 AR-1260-2

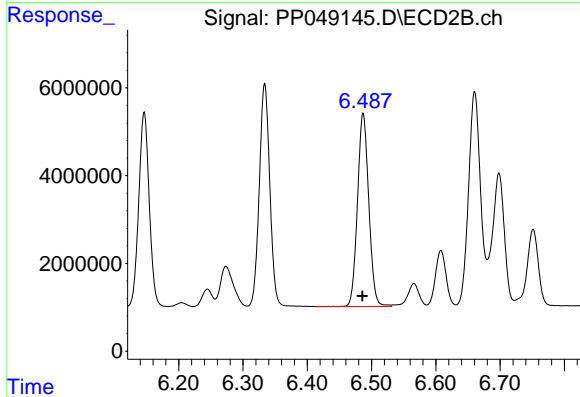
R.T.: 6.334 min
 Delta R.T.: 0.002 min
 Response: 58089258
 Conc: 433.08 ng/ml



#33 AR-1260-3

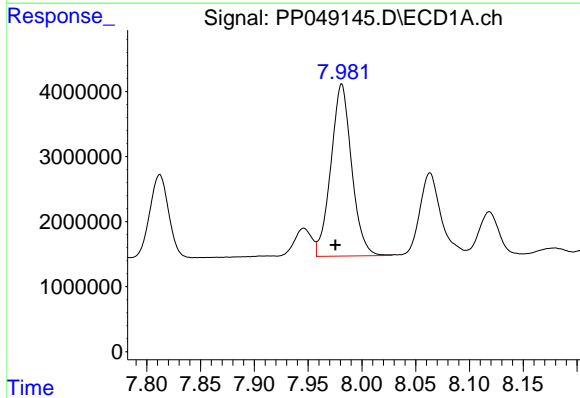
R.T.: 7.753 min
 Delta R.T.: 0.006 min
 Response: 28397151
 Conc: 507.58 ng/ml

Instrument :
 ECD_P
 ClientSampleId :



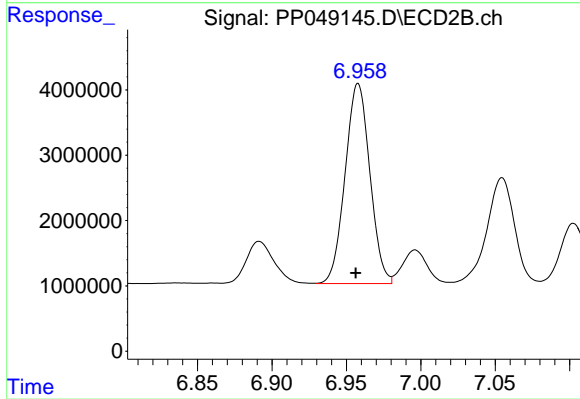
#33 AR-1260-3

R.T.: 6.487 min
 Delta R.T.: 0.001 min
 Response: 53857200
 Conc: 442.42 ng/ml



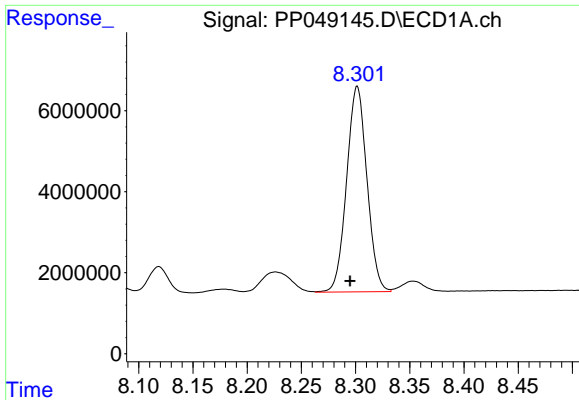
#34 AR-1260-4

R.T.: 7.981 min
 Delta R.T.: 0.006 min
 Response: 35522265
 Conc: 507.94 ng/ml



#34 AR-1260-4

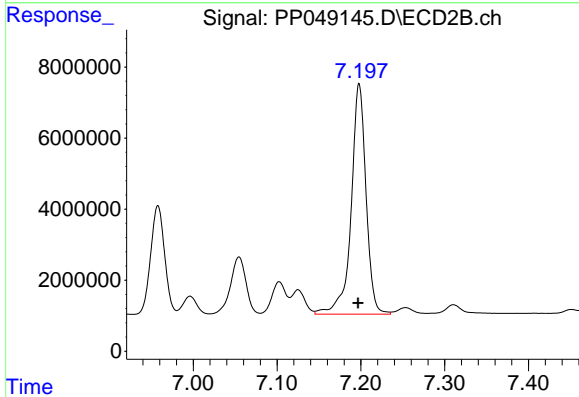
R.T.: 6.958 min
 Delta R.T.: 0.002 min
 Response: 35448896
 Conc: 420.15 ng/ml



#35 AR-1260-5

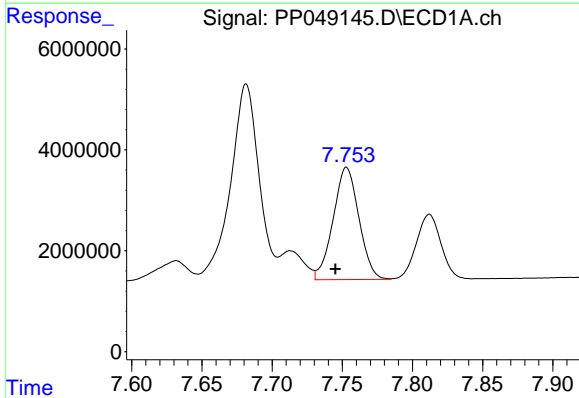
R.T.: 8.302 min
 Delta R.T.: 0.007 min
 Response: 66188109
 Conc: 483.05 ng/ml

Instrument :
 ECD_P
 ClientSampleId :



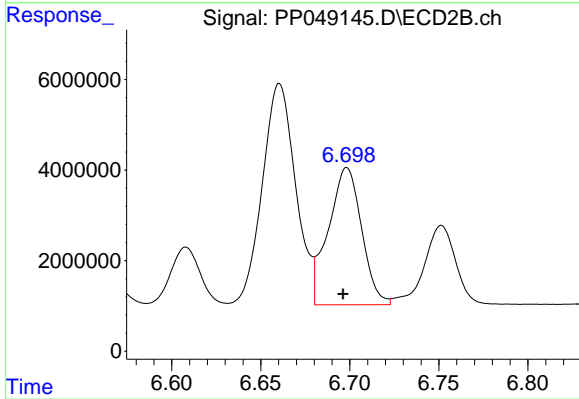
#35 AR-1260-5

R.T.: 7.198 min
 Delta R.T.: 0.001 min
 Response: 80035553
 Conc: 424.54 ng/ml



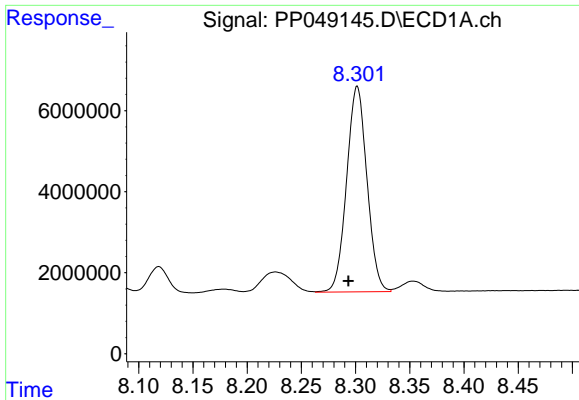
#36 AR-1262-1

R.T.: 7.753 min
 Delta R.T.: 0.008 min
 Response: 28397151
 Conc: 302.96 ng/ml



#36 AR-1262-1

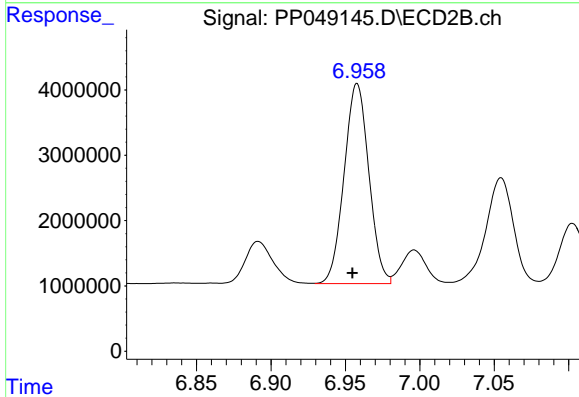
R.T.: 6.698 min
 Delta R.T.: 0.002 min
 Response: 39378770
 Conc: 296.03 ng/ml



#37 AR-1262-2

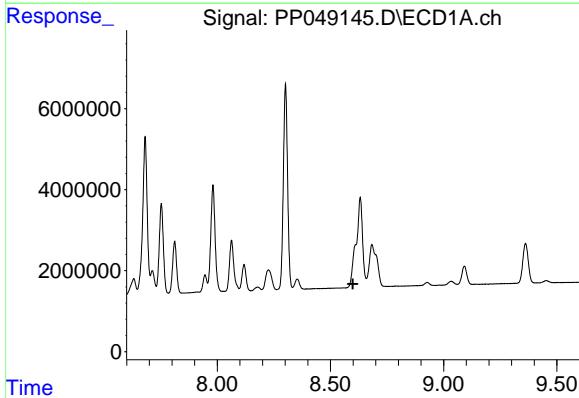
R.T.: 8.302 min
 Delta R.T.: 0.008 min
 Response: 66188109
 Conc: 386.78 ng/ml

Instrument :
 ECD_P
 ClientSampleId :



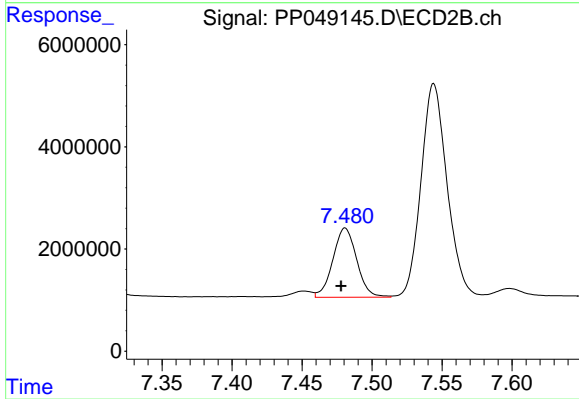
#37 AR-1262-2

R.T.: 6.958 min
 Delta R.T.: 0.003 min
 Response: 35448896
 Conc: 312.82 ng/ml



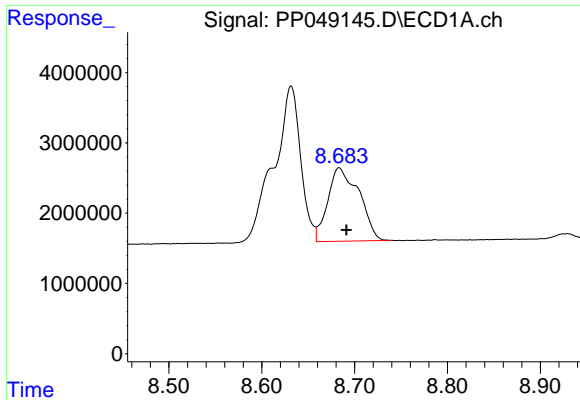
#38 AR-1262-3

R.T.: 0.000 min
 Exp R.T. : 8.599 min
 Response: 0
 Conc: N.D.



#38 AR-1262-3

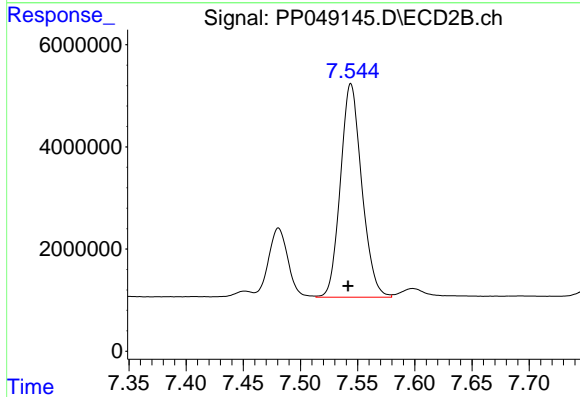
R.T.: 7.481 min
 Delta R.T.: 0.003 min
 Response: 16089271
 Conc: 197.47 ng/ml



#39 AR-1262-4

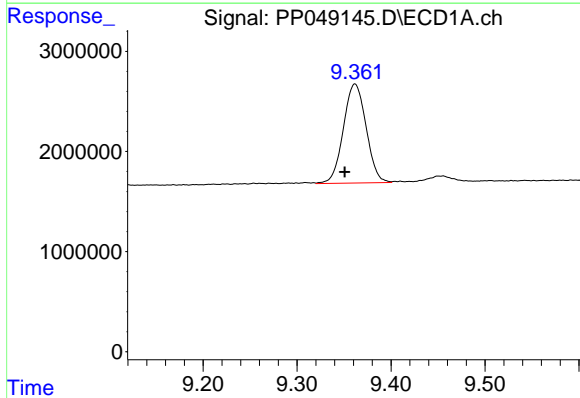
R.T.: 8.683 min
 Delta R.T.: -0.008 min
 Response: 24450584
 Conc: 520.93 ng/ml

Instrument :
 ECD_P
 ClientSampleId :



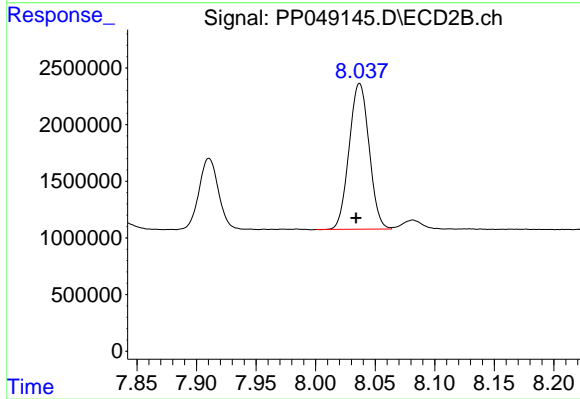
#39 AR-1262-4

R.T.: 7.544 min
 Delta R.T.: 0.003 min
 Response: 54291459
 Conc: 372.45 ng/ml



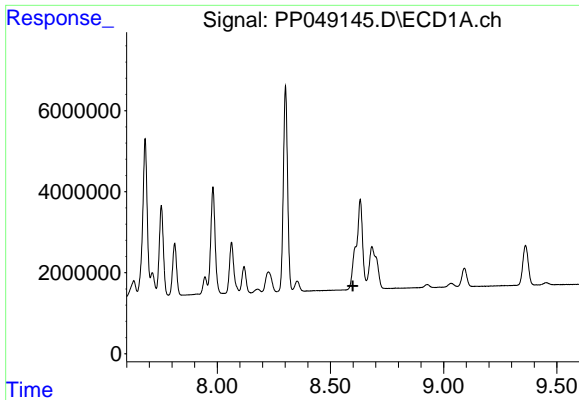
#40 AR-1262-5

R.T.: 9.362 min
 Delta R.T.: 0.011 min
 Response: 16653670
 Conc: 275.45 ng/ml



#40 AR-1262-5

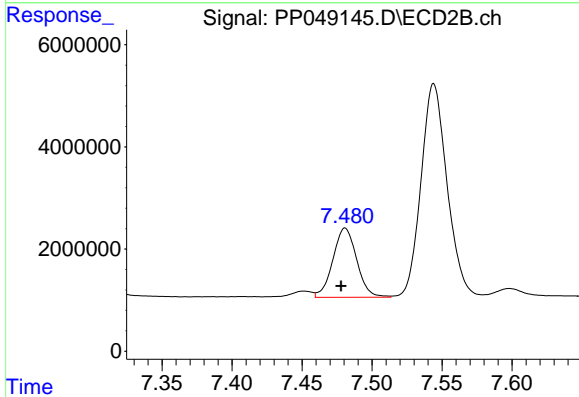
R.T.: 8.037 min
 Delta R.T.: 0.003 min
 Response: 15033451
 Conc: 249.24 ng/ml



#41 AR-1268-1

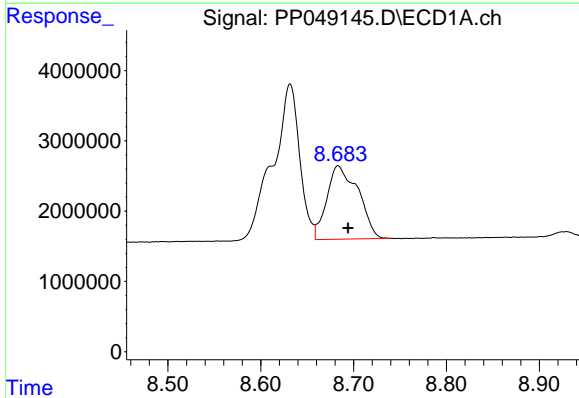
R.T.: 0.000 min
 Exp R.T.: 8.599 min
 Response: 0
 Conc: N.D.

Instrument :
 ECD_P
 ClientSampleId :



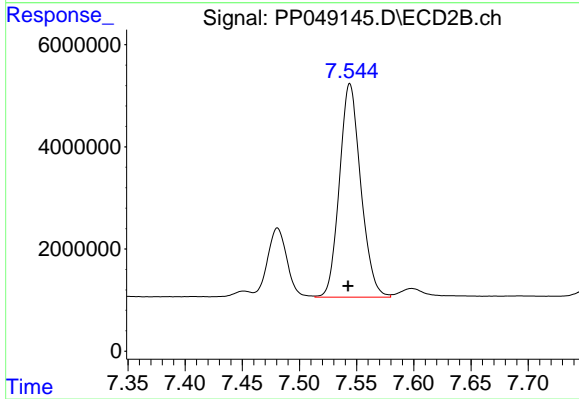
#41 AR-1268-1

R.T.: 7.481 min
 Delta R.T.: 0.003 min
 Response: 16089271
 Conc: 74.79 ng/ml



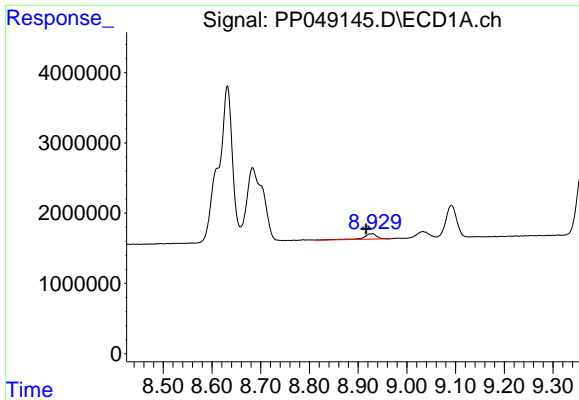
#42 AR-1268-2

R.T.: 8.683 min
 Delta R.T.: -0.010 min
 Response: 24450584
 Conc: 139.75 ng/ml



#42 AR-1268-2

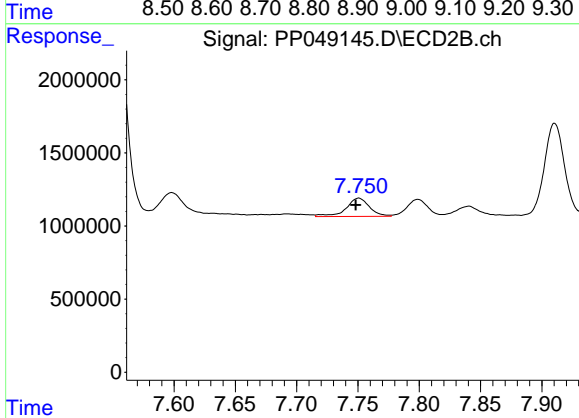
R.T.: 7.544 min
 Delta R.T.: 0.002 min
 Response: 54291459
 Conc: 283.82 ng/ml



#43 AR-1268-3

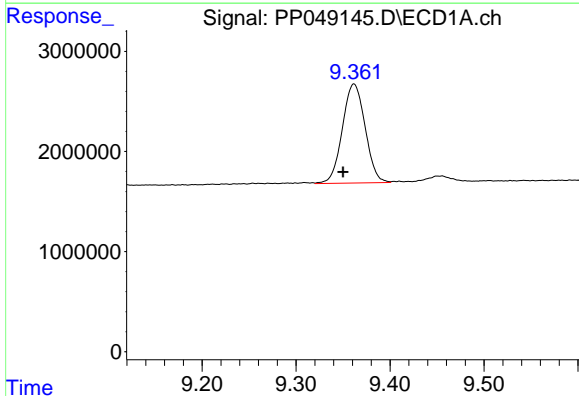
R.T.: 8.929 min
 Delta R.T.: 0.013 min
 Response: 1455888
 Conc: 10.16 ng/ml

Instrument :
 ECD_P
 ClientSampleId :



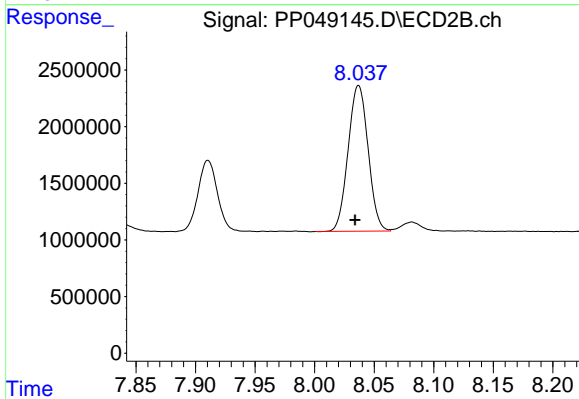
#43 AR-1268-3

R.T.: 7.751 min
 Delta R.T.: 0.002 min
 Response: 1663285
 Conc: 10.92 ng/ml



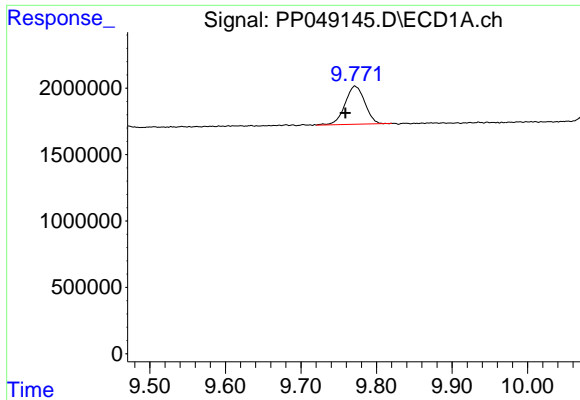
#44 AR-1268-4

R.T.: 9.362 min
 Delta R.T.: 0.011 min
 Response: 16653670
 Conc: 259.97 ng/ml



#44 AR-1268-4

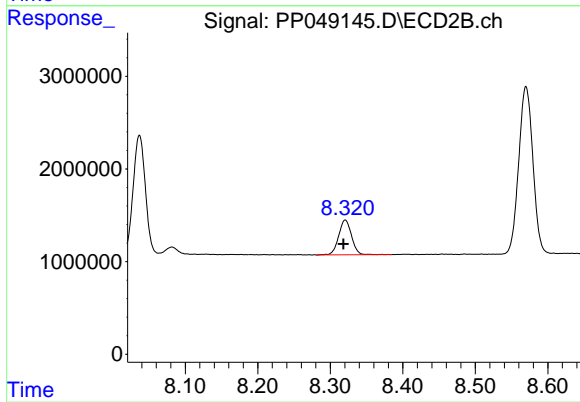
R.T.: 8.037 min
 Delta R.T.: 0.003 min
 Response: 15033451
 Conc: 235.89 ng/ml



#45 AR-1268-5

R.T.: 9.772 min
Delta R.T.: 0.013 min
Response: 5224754
Conc: 11.33 ng/ml

Instrument :
ECD_P
ClientSampleId :



#45 AR-1268-5

R.T.: 8.321 min
Delta R.T.: 0.003 min
Response: 4629232
Conc: 11.60 ng/ml