

Data Path : Z:\pestpcbsrv\HPCHEM1\ECD_P\Data\PP070125\
 Data File : PP073421.D
 Signal(s) : Signal #1: ECD1A.ch Signal #2: ECD2B.ch
 Acq On : 01 Jul 2025 16:16
 Operator : YP\AJ
 Sample : AR1242ICC750
 Misc :
 ALS Vial : 11 Sample Multiplier: 1

Instrument :
 ECD_P
 ClientSampleId :
 AR1242ICC750

Integration File signal 1: autoint1.e
 Integration File signal 2: autoint2.e
 Quant Time: Jul 02 02:30:51 2025
 Quant Method : Z:\pestpcbsrv\HPCHEM1\ECD_P\methods\PP070125.M
 Quant Title : GC EXTRACTABLES
 QLast Update : Wed Jul 02 02:29:51 2025
 Response via : Initial Calibration
 Integrator: ChemStation

Volume Inj. : 2 µl
 Signal #1 Phase : ZB-MR1 Signal #2 Phase: ZB-MR2
 Signal #1 Info : 30Mx0.32mmx 0.50µ Signal #2 Info : 30M x 0.32mm x 0.25µm

Compound	RT#1	RT#2	Resp#1	Resp#2	ng/ml	ng/ml

System Monitoring Compounds						
1) SA Tetrachlo...	4.489	3.785	122.4E6	139.0E6	71.873	72.468
2) SA Decachlor...	10.180	8.790	112.7E6	108.8E6	70.344	71.196
Target Compounds						
16) L4 AR-1242-1	5.641	4.865	36200676	41020324	716.198	711.947
17) L4 AR-1242-2	5.662	4.882	55456988	61448360	716.263	704.816
18) L4 AR-1242-3	5.724	5.059	34007076	33023112	705.977	705.628
19) L4 AR-1242-4	5.822	5.143	28511287	31561188	704.277	699.875
20) L4 AR-1242-5	6.551	5.664	30265176	39725471	685.958	700.248

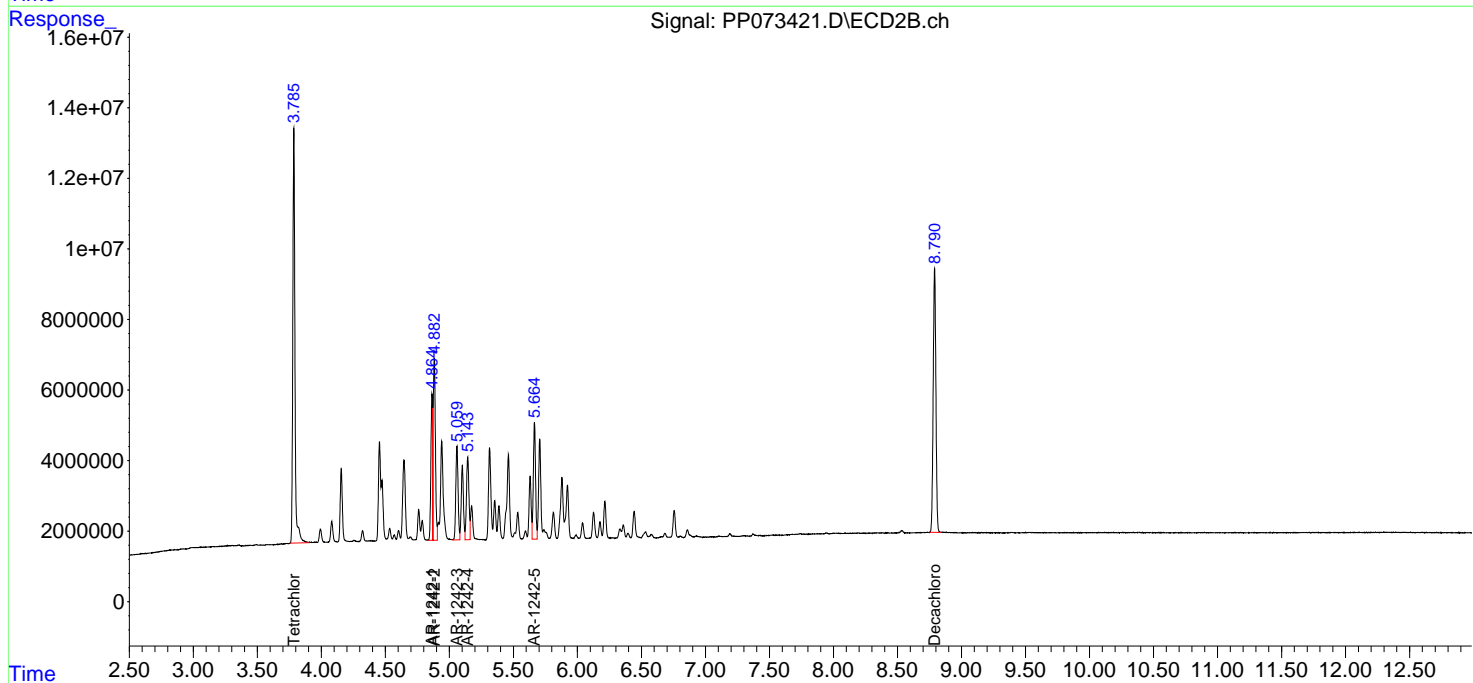
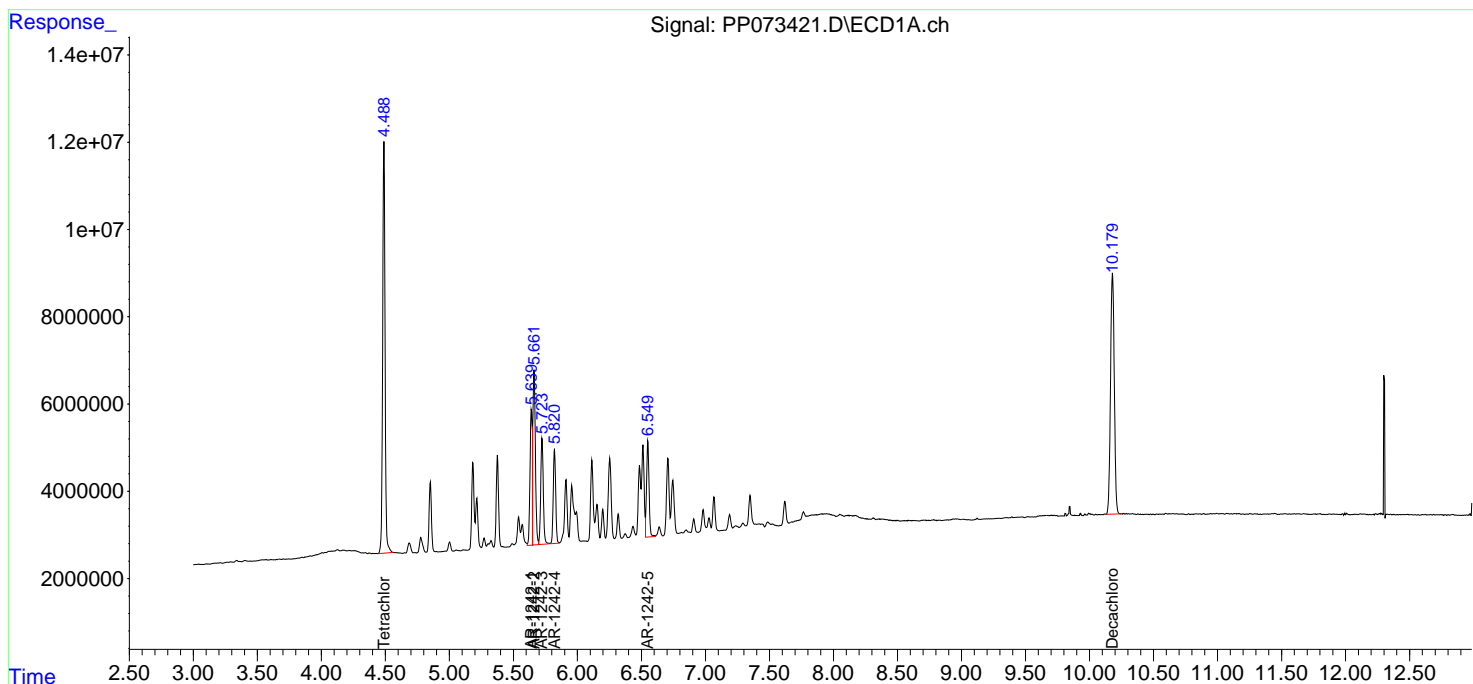
(f)=RT Delta > 1/2 Window (#)=Amounts differ by > 25% (m)=manual int.

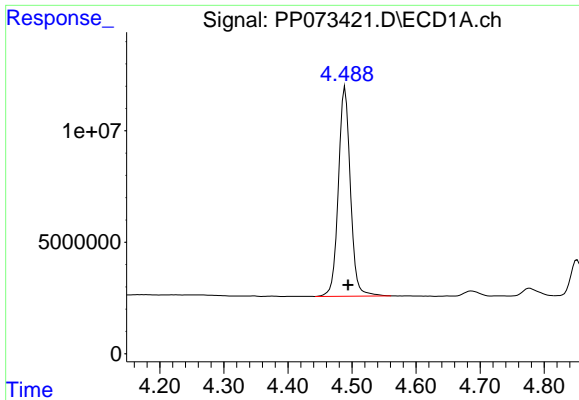
Data Path : Z:\pestpcbsrv\HPCHEM1\ECD_P\Data\PP070125\
Data File : PP073421.D
Signal(s) : Signal #1: ECD1A.ch Signal #2: ECD2B.ch
Acq On : 01 Jul 2025 16:16
Operator : YP\AJ
Sample : AR1242ICC750
Misc :
ALS Vial : 11 Sample Multiplier: 1

Instrument :
ECD_P
ClientSampleId :
AR1242ICC750

Integration File signal 1: autoint1.e
Integration File signal 2: autoint2.e
Quant Time: Jul 02 02:30:51 2025
Quant Method : Z:\pestpcbsrv\HPCHEM1\ECD_P\methods\PP070125.M
Quant Title : GC EXTRACTABLES
QLast Update : Wed Jul 02 02:29:51 2025
Response via : Initial Calibration
Integrator: ChemStation

Volume Inj. : 2 µl
Signal #1 Phase : ZB-MR1 Signal #2 Phase: ZB-MR2
Signal #1 Info : 30Mx0.32mmx 0.50µ Signal #2 Info : 30M x 0.32mm x 0.25µm

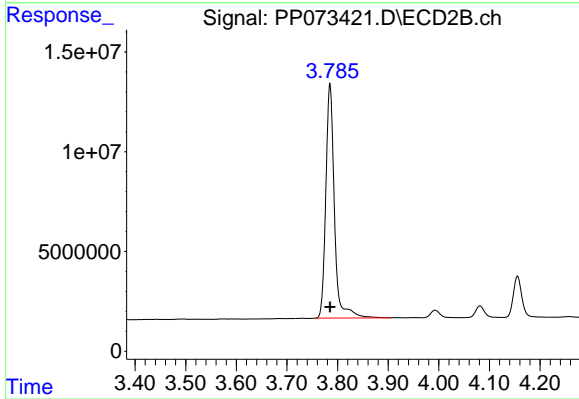




#1 Tetrachloro-m-xylene

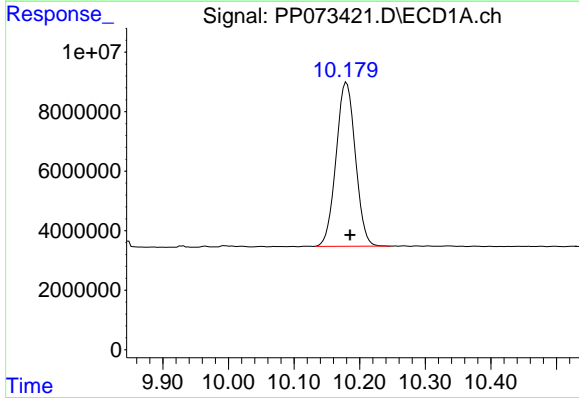
R.T.: 4.489 min
 Delta R.T.: -0.005 min
 Response: 122405946
 Conc: 71.87 ng/ml

Instrument :
 ECD_P
 ClientSampleId :
 AR1242ICC750



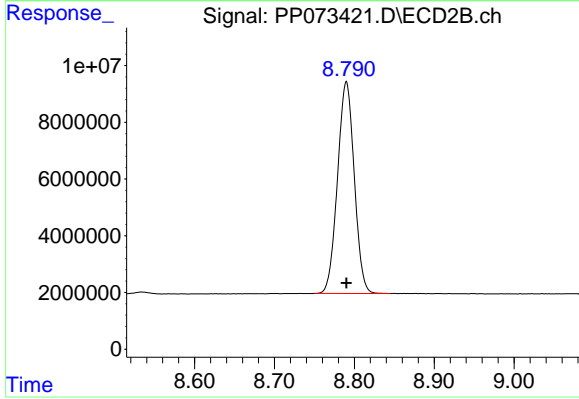
#1 Tetrachloro-m-xylene

R.T.: 3.785 min
 Delta R.T.: 0.000 min
 Response: 139045731
 Conc: 72.47 ng/ml



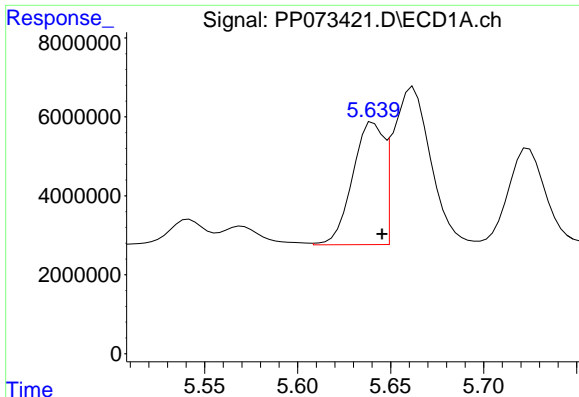
#2 Decachlorobiphenyl

R.T.: 10.180 min
 Delta R.T.: -0.005 min
 Response: 112703875
 Conc: 70.34 ng/ml



#2 Decachlorobiphenyl

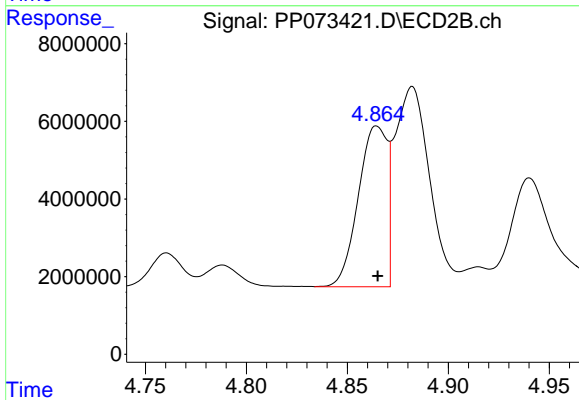
R.T.: 8.790 min
 Delta R.T.: 0.000 min
 Response: 108823058
 Conc: 71.20 ng/ml



#16 AR-1242-1

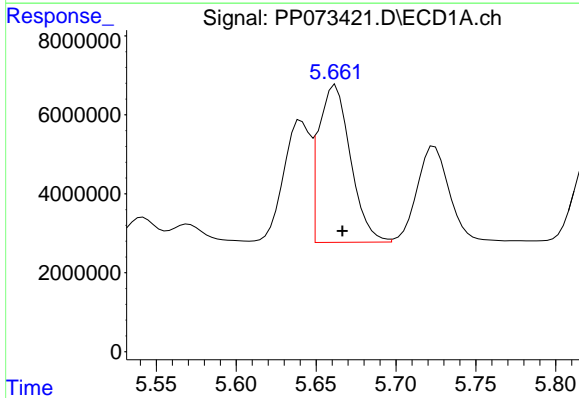
R.T.: 5.641 min
Delta R.T.: -0.005 min
Response: 36200676
Conc: 716.20 ng/ml

Instrument :
ECD_P
ClientSampleId :
AR1242ICC750



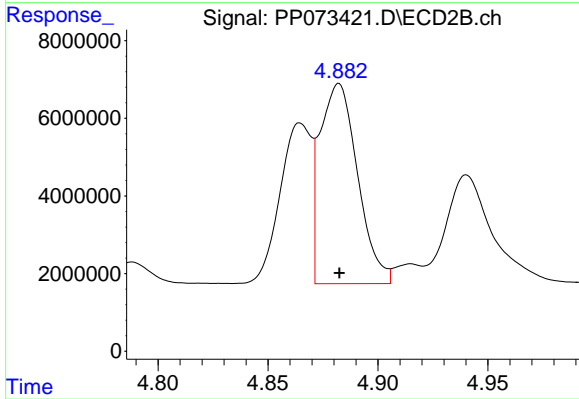
#16 AR-1242-1

R.T.: 4.865 min
Delta R.T.: 0.000 min
Response: 41020324
Conc: 711.95 ng/ml



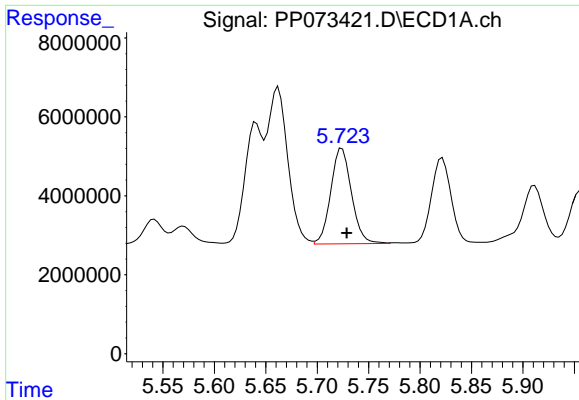
#17 AR-1242-2

R.T.: 5.662 min
Delta R.T.: -0.004 min
Response: 55456988
Conc: 716.26 ng/ml



#17 AR-1242-2

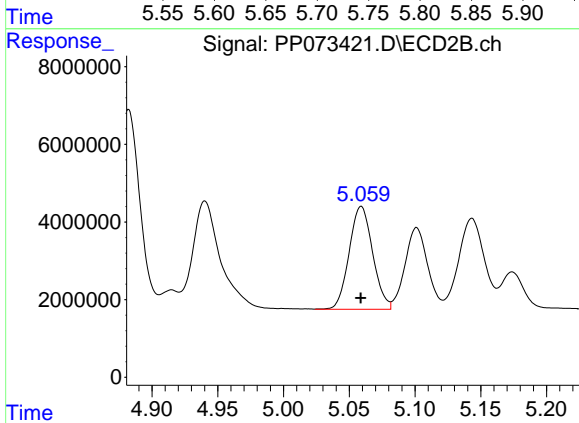
R.T.: 4.882 min
Delta R.T.: 0.000 min
Response: 61448360
Conc: 704.82 ng/ml



#18 AR-1242-3

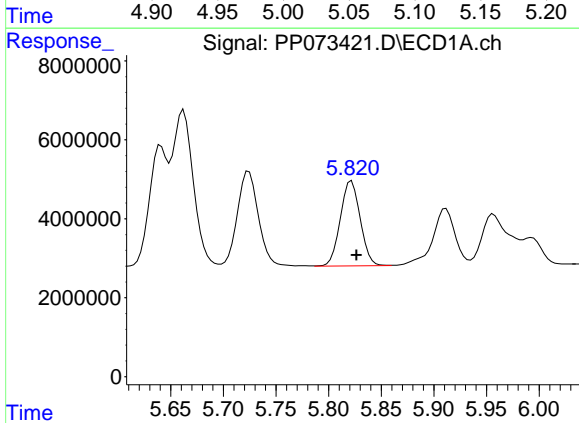
R.T.: 5.724 min
 Delta R.T.: -0.005 min
 Response: 34007076
 Conc: 705.98 ng/ml

Instrument :
 ECD_P
 ClientSampleId :
 AR1242ICC750



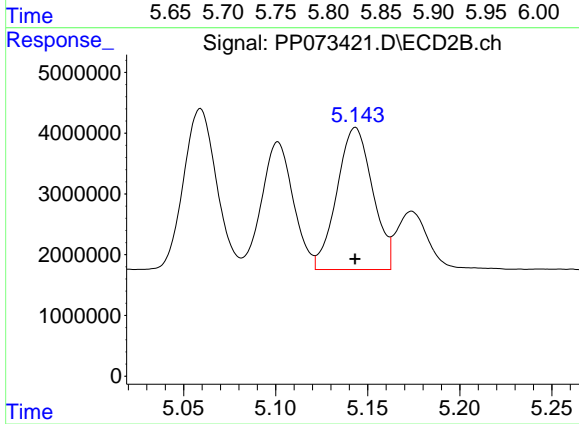
#18 AR-1242-3

R.T.: 5.059 min
 Delta R.T.: 0.000 min
 Response: 33023112
 Conc: 705.63 ng/ml



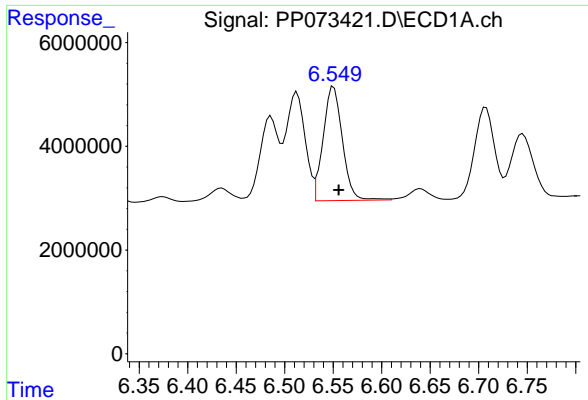
#19 AR-1242-4

R.T.: 5.822 min
 Delta R.T.: -0.005 min
 Response: 28511287
 Conc: 704.28 ng/ml



#19 AR-1242-4

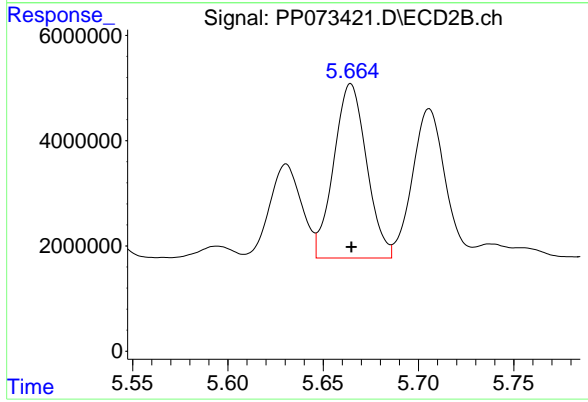
R.T.: 5.143 min
 Delta R.T.: 0.000 min
 Response: 31561188
 Conc: 699.88 ng/ml



#20 AR-1242-5

R.T.: 6.551 min
Delta R.T.: -0.005 min
Response: 30265176
Conc: 685.96 ng/ml

Instrument :
ECD_P
ClientSampleId :
AR1242ICC750



#20 AR-1242-5

R.T.: 5.664 min
Delta R.T.: 0.000 min
Response: 39725471
Conc: 700.25 ng/ml