

Data Path : Z:\pestpcbsrv\HPCHEM1\ECD\_P\Data\PP070221\  
 Data File : PP036999.D  
 Signal(s) : Signal #1: ECD1A.CH Signal #2: ECD2B.CH  
 Acq On : 02 Jul 2021 18:45  
 Operator : DD\AJ  
 Sample : M2913-11  
 Misc :  
 ALS Vial : 26 Sample Multiplier: 1

Instrument :  
 ECD\_P  
 ClientSampled :

Integration File signal 1: autoint1.e  
 Integration File signal 2: autoint2.e  
 Quant Time: Jul 03 02:06:45 2021  
 Quant Method : Z:\pestpcbsrv\HPCHEM1\ECD\_P\methods\PP061721.M  
 Quant Title : GC EXTRACTABLES  
 QLast Update : Fri Jun 18 06:06:19 2021  
 Response via : Initial Calibration  
 Integrator: ChemStation 6890 Scale Mode: Small noise peaks clipped

Volume Inj. : 2 µl  
 Signal #1 Phase : ZB-MR1 Signal #2 Phase: ZB-MR2  
 Signal #1 Info : 30Mx0.32mmx 0.50µ Signal #2 Info : 30M x 0.32mm x 0.25µm

Compound	RT#1	RT#2	Resp#1	Resp#2	ng/ml	ng/ml
System Monitoring Compounds						
1) SA Tetrachlo...	4.963	3.952	427404	723682	9.670	23.365 #
2) SA Decachlor...	10.998	9.250	865700	404958	20.181	12.663 #
Target Compounds						
3) L1 AR-1016-1	6.283	5.228	48576	192096	28.678	162.950 #
4) L1 AR-1016-2	6.306	5.228	83194	192096	34.503	118.275 #
5) L1 AR-1016-3	6.376	5.410	53097	57027	34.540	63.207 #
6) L1 AR-1016-4	6.475	5.468	72944	24177	56.742	34.057 #
7) L1 AR-1016-5	6.794	5.698	158603	33607	124.000	37.084 #
8) L2 AR-1221-1	5.228	0.000	63045	0	112.297	N.D. #
9) L2 AR-1221-2	5.315	4.303	21914	11964	50.851	40.082
10) L2 AR-1221-3	5.417	4.396	531788	5990	412.488	6.634 #
11) L3 AR-1232-1	5.417f	4.396	531788	5990	499.296	8.143 #
12) L3 AR-1232-2	5.987	5.228	65752	192096	119.554	287.280 #
13) L3 AR-1232-3	6.306	5.410	83194	57027	81.439	157.196 #
14) L3 AR-1232-4	6.475	5.529	72944	220525	135.137	704.232 #
15) L3 AR-1232-5	6.577	5.698	47648	33607	130.007	94.350 #
16) L4 AR-1242-1	6.283	5.228f	48576	192096	37.880	215.815 #
17) L4 AR-1242-2	6.306	5.228	83194	192096	45.590	157.480 #
18) L4 AR-1242-3	6.376	5.410	53097	57027	45.260	84.750 #
19) L4 AR-1242-4	6.475	5.529	72944	220525	75.374	340.617 #
20) L4 AR-1242-5	7.284f	6.077	235405	341255	223.796	418.254 #
21) L5 AR-1248-1	6.283	5.228	48576	192096	48.151	275.695 #
22) L5 AR-1248-2	6.577	5.468	47648	24177	35.085	25.525 #
23) L5 AR-1248-3	6.794	5.529	158603	220525	97.477	222.879 #
24) L5 AR-1248-4	7.235	5.698	165920	33607	90.878	28.731 #
25) L5 AR-1248-5	7.284f	6.121	235405	68140	130.560	57.446 #
26) L6 AR-1254-1	7.205	6.077	527902	341255	300.173	201.406 #
27) L6 AR-1254-2	7.433	6.234	509535	80833	188.318	54.345 #
28) L6 AR-1254-3	7.809	6.655	330812	77903	111.684	32.044 #
29) L6 AR-1254-4	8.098	6.898	105900	55492	48.173	35.860 #
30) L6 AR-1254-5	8.528	7.326	253778	400725	106.713	186.359 #
31) L7 AR-1260-1	7.969	6.793	192760	100829	88.809	62.625 #
32) L7 AR-1260-2	8.234	6.992	600642	122732	234.356	63.288 #
33) L7 AR-1260-3	8.601	7.144	148014	100519	73.842	55.270 #
34) L7 AR-1260-4	8.831	7.629	241467	78103	101.918	50.365 #
35) L7 AR-1260-5	9.161	7.878	281157	196617	63.013	53.505
36) L8 AR-1262-1	8.601	7.326	148014	400725	51.945	336.211 #
37) L8 AR-1262-2	9.161	7.878	281157	196617	55.337	50.157
38) L8 AR-1262-3	9.475	8.166	68735	41281	18.554	25.939 #
39) L8 AR-1262-4	9.549f	8.228	134274	134824	46.750	45.298
40) L8 AR-1262-5	10.239	8.728	109335	37574	51.751	26.367 #
41) L9 AR-1268-1	9.475	8.166	68735	41281	11.457	8.865

Data Path : Z:\pestpcbsrv\HPCHEM1\ECD\_P\Data\PP070221\  
 Data File : PP036999.D  
 Signal(s) : Signal #1: ECD1A.CH Signal #2: ECD2B.CH  
 Acq On : 02 Jul 2021 18:45  
 Operator : DD\AJ  
 Sample : M2913-11  
 Misc :  
 ALS Vial : 26 Sample Multiplier: 1

Instrument :  
 ECD\_P  
 ClientSampleId :

Integration File signal 1: autoint1.e  
 Integration File signal 2: autoint2.e  
 Quant Time: Jul 03 02:06:45 2021  
 Quant Method : Z:\pestpcbsrv\HPCHEM1\ECD\_P\methods\PP061721.M  
 Quant Title : GC EXTRACTABLES  
 QLast Update : Fri Jun 18 06:06:19 2021  
 Response via : Initial Calibration  
 Integrator: ChemStation 6890 Scale Mode: Small noise peaks clipped

Volume Inj. : 2 µl  
 Signal #1 Phase : ZB-MR1 Signal #2 Phase: ZB-MR2  
 Signal #1 Info : 30Mx0.32mmx 0.50µ Signal #2 Info : 30M x 0.32mm x 0.25µm

	Compound	RT#1	RT#2	Resp#1	Resp#2	ng/ml	ng/ml
42)	L9 AR-1268-2	9.549f	8.228	134274	134824	23.555	31.256 #
43)	L9 AR-1268-3	9.797	0.000	30461	0	6.336	N.D. #
44)	L9 AR-1268-4	10.239	8.728	109335	37574	46.417	23.620 #
45)	L9 AR-1268-5	10.663	9.008	143823	42971	9.352	3.635 #

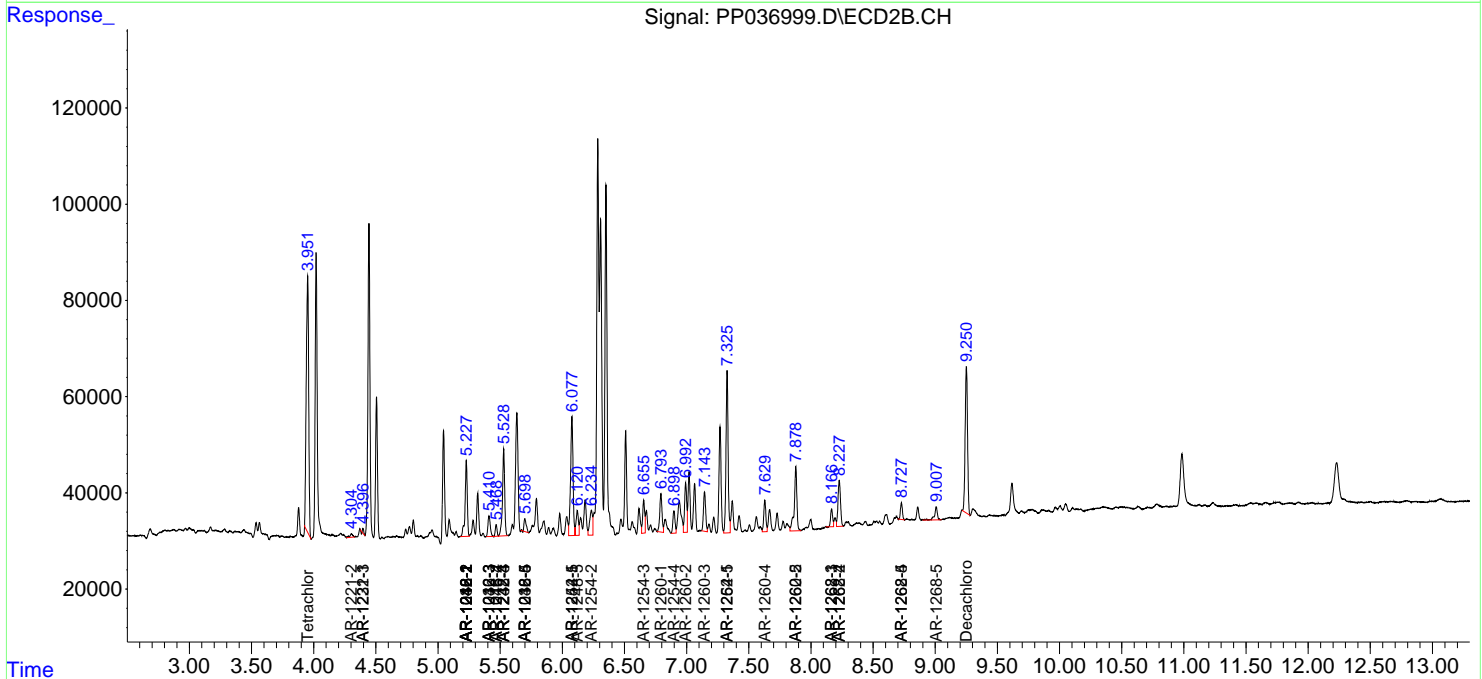
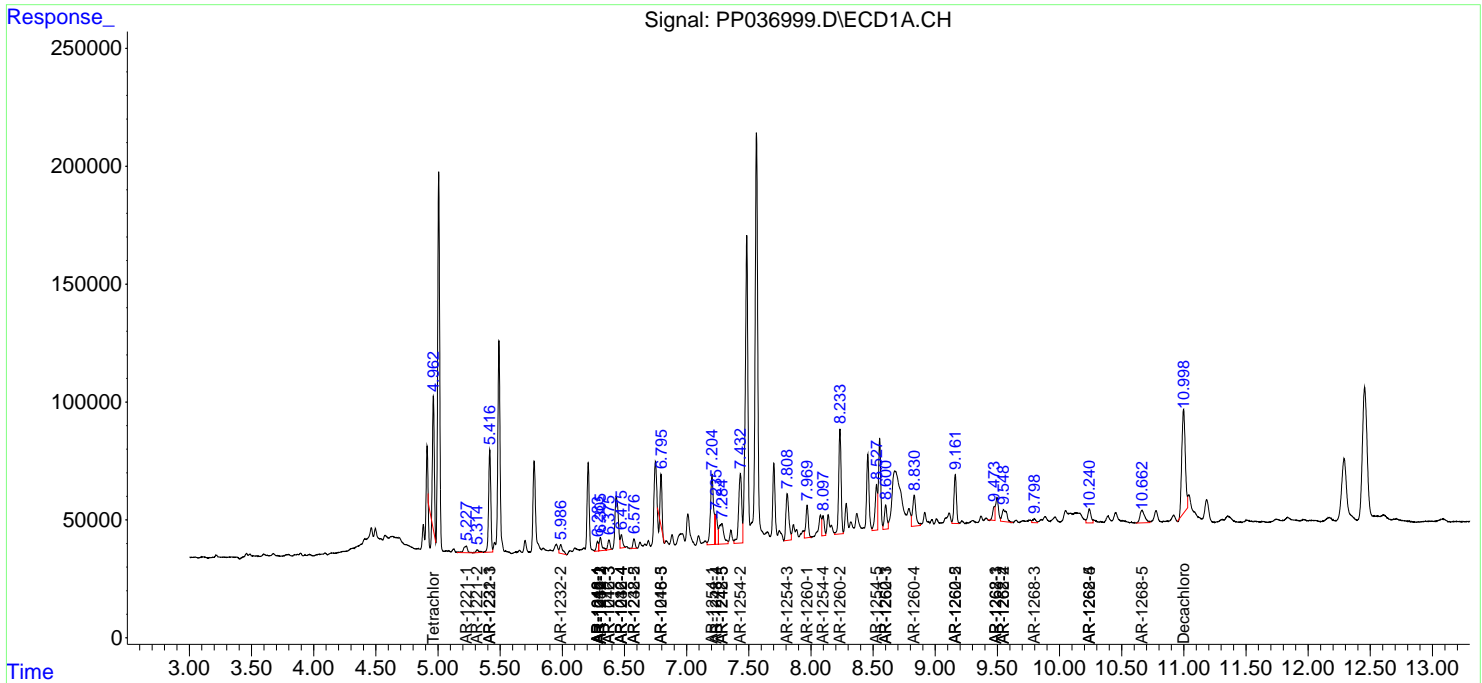
(f)=RT Delta > 1/2 Window (#)=Amounts differ by > 25% (m)=manual int.

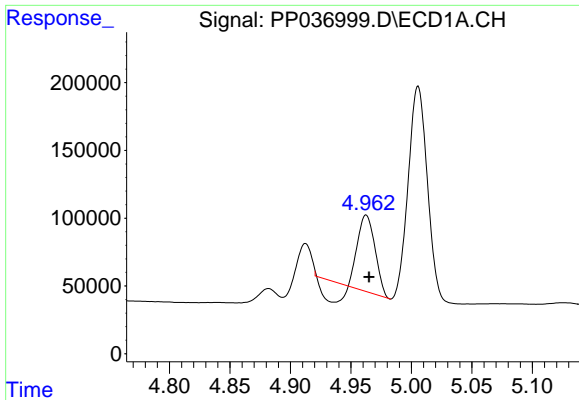
Data Path : Z:\pestpcbsrv\HPCHEM1\ECD\_P\Data\PP070221\  
 Data File : PP036999.D  
 Signal(s) : Signal #1: ECD1A.CH Signal #2: ECD2B.CH  
 Acq On : 02 Jul 2021 18:45  
 Operator : DD\AJ  
 Sample : M2913-11  
 Misc :  
 ALS Vial : 26 Sample Multiplier: 1

Instrument :  
 ECD\_P  
 ClientSampled :

Integration File signal 1: autoint1.e  
 Integration File signal 2: autoint2.e  
 Quant Time: Jul 03 02:06:45 2021  
 Quant Method : Z:\pestpcbsrv\HPCHEM1\ECD\_P\methods\PP061721.M  
 Quant Title : GC EXTRACTABLES  
 QLast Update : Fri Jun 18 06:06:19 2021  
 Response via : Initial Calibration  
 Integrator: ChemStation 6890 Scale Mode: Small noise peaks clipped

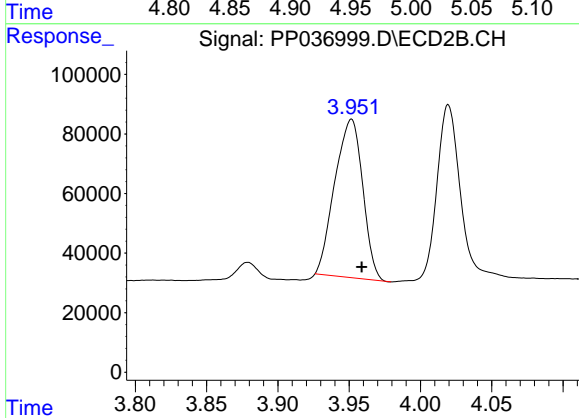
Volume Inj. : 2 µl  
 Signal #1 Phase : ZB-MR1 Signal #2 Phase: ZB-MR2  
 Signal #1 Info : 30Mx0.32mmx 0.50µ Signal #2 Info : 30M x 0.32mm x 0.25µm



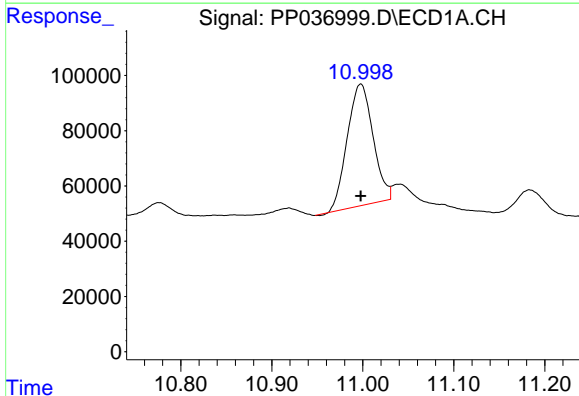


#1 Tetrachloro-m-xylene  
 R.T.: 4.963 min  
 Delta R.T.: -0.002 min  
 Response: 427404  
 Conc: 9.67 ng/ml

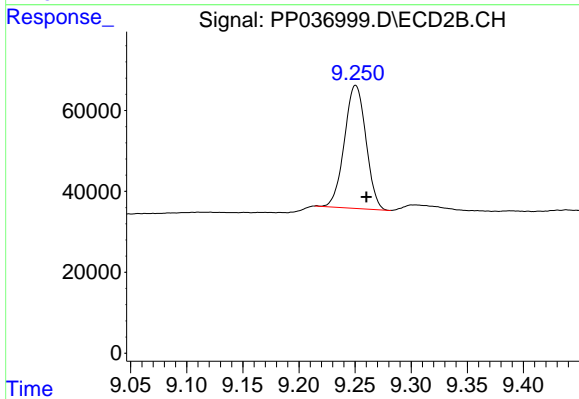
Instrument :  
 ECD\_P  
 ClientSampleId :



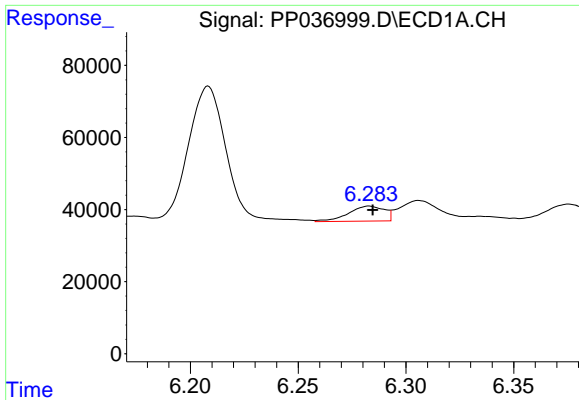
#1 Tetrachloro-m-xylene  
 R.T.: 3.952 min  
 Delta R.T.: -0.007 min  
 Response: 723682  
 Conc: 23.36 ng/ml



#2 Decachlorobiphenyl  
 R.T.: 10.998 min  
 Delta R.T.: 0.000 min  
 Response: 865700  
 Conc: 20.18 ng/ml



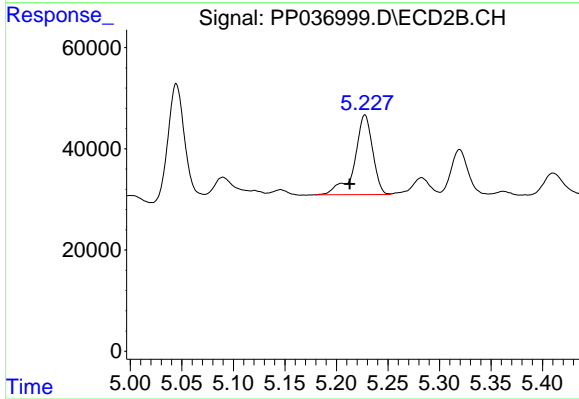
#2 Decachlorobiphenyl  
 R.T.: 9.250 min  
 Delta R.T.: -0.010 min  
 Response: 404958  
 Conc: 12.66 ng/ml



#3 AR-1016-1

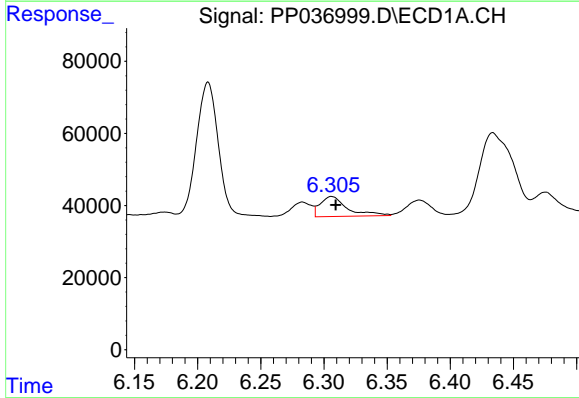
R.T.: 6.283 min  
 Delta R.T.: -0.002 min  
 Response: 48576  
 Conc: 28.68 ng/ml

Instrument :  
 ECD\_P  
 ClientSampleId :



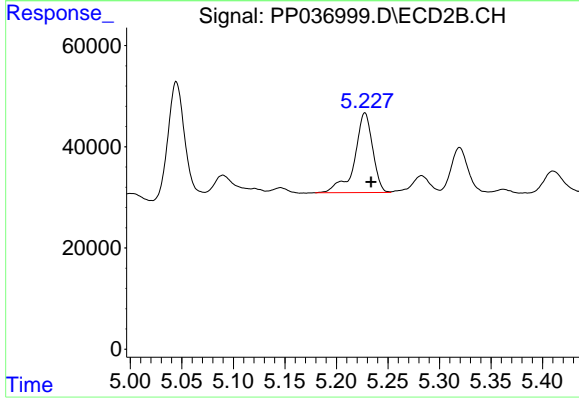
#3 AR-1016-1

R.T.: 5.228 min  
 Delta R.T.: 0.015 min  
 Response: 192096  
 Conc: 162.95 ng/ml



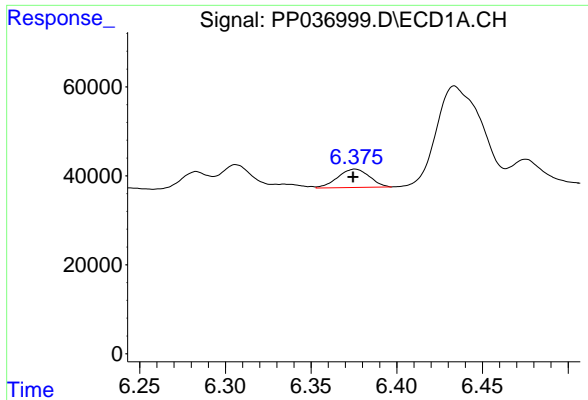
#4 AR-1016-2

R.T.: 6.306 min  
 Delta R.T.: -0.003 min  
 Response: 83194  
 Conc: 34.50 ng/ml



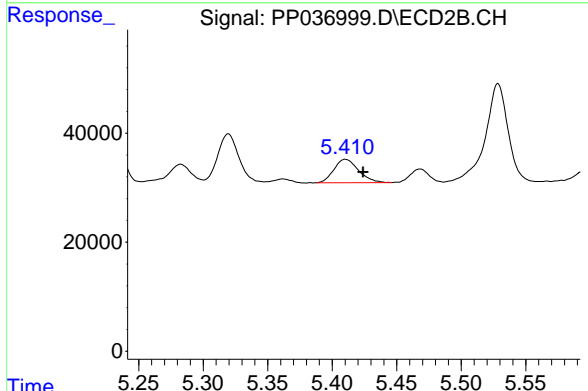
#4 AR-1016-2

R.T.: 5.228 min  
 Delta R.T.: -0.006 min  
 Response: 192096  
 Conc: 118.28 ng/ml

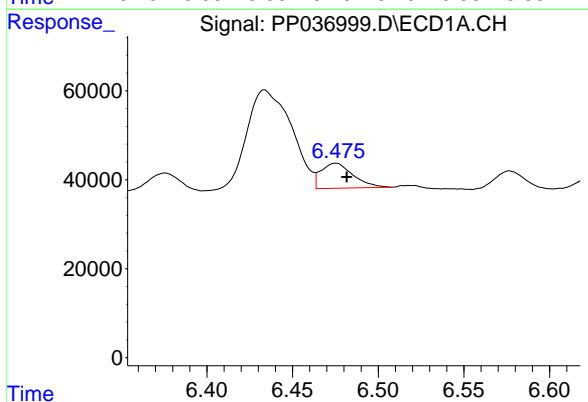


#5 AR-1016-3  
 R.T.: 6.376 min  
 Delta R.T.: 0.001 min  
 Response: 53097  
 Conc: 34.54 ng/ml

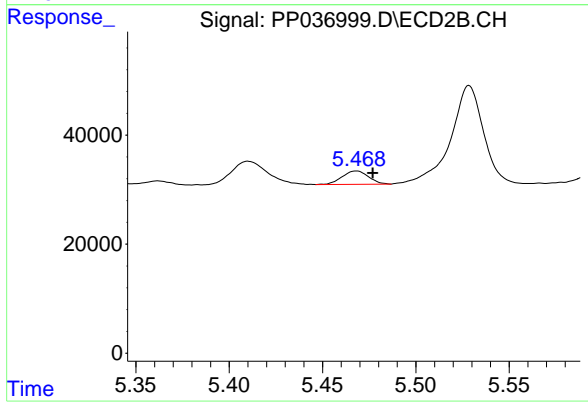
Instrument :  
 ECD\_P  
 ClientSampleId :



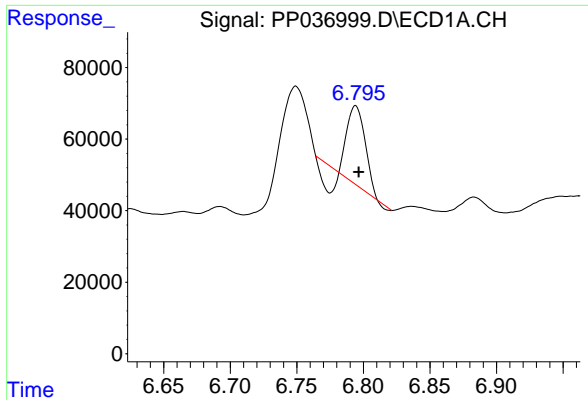
#5 AR-1016-3  
 R.T.: 5.410 min  
 Delta R.T.: -0.014 min  
 Response: 57027  
 Conc: 63.21 ng/ml



#6 AR-1016-4  
 R.T.: 6.475 min  
 Delta R.T.: -0.006 min  
 Response: 72944  
 Conc: 56.74 ng/ml

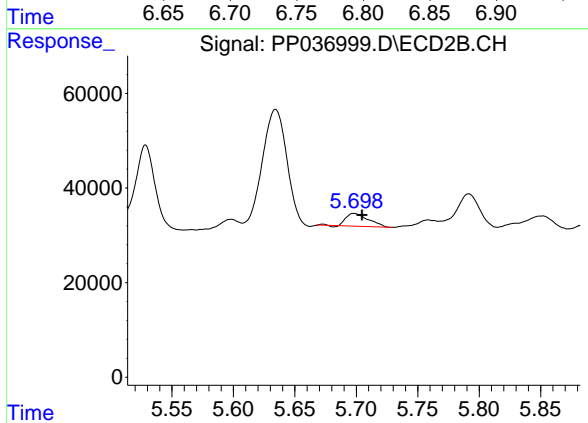


#6 AR-1016-4  
 R.T.: 5.468 min  
 Delta R.T.: -0.009 min  
 Response: 24177  
 Conc: 34.06 ng/ml

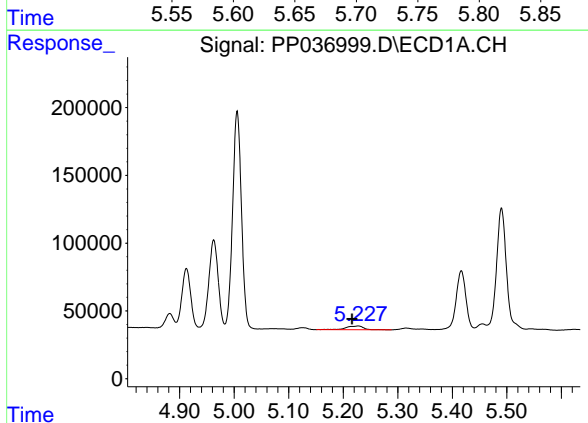


#7 AR-1016-5  
 R.T.: 6.794 min  
 Delta R.T.: -0.002 min  
 Response: 158603  
 Conc: 124.00 ng/ml

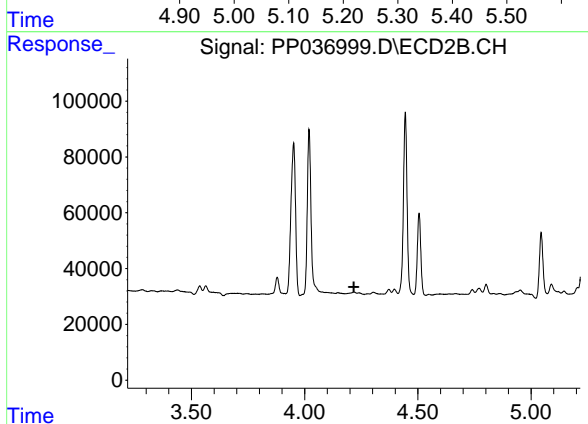
Instrument :  
 ECD\_P  
 ClientSampleId :



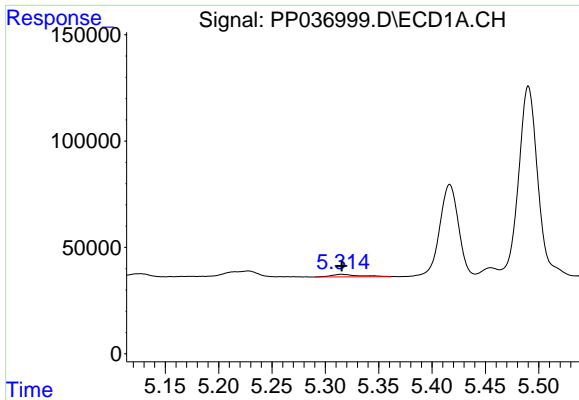
#7 AR-1016-5  
 R.T.: 5.698 min  
 Delta R.T.: -0.006 min  
 Response: 33607  
 Conc: 37.08 ng/ml



#8 AR-1221-1  
 R.T.: 5.228 min  
 Delta R.T.: 0.011 min  
 Response: 63045  
 Conc: 112.30 ng/ml

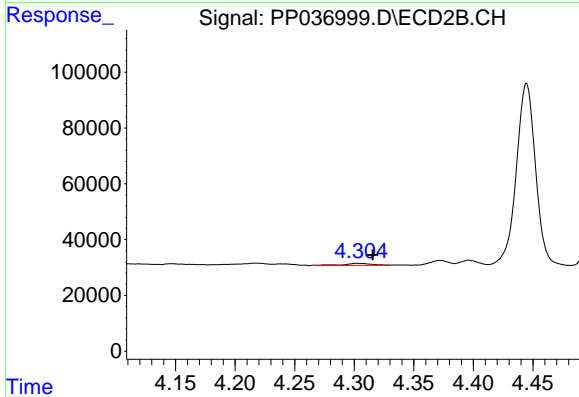


#8 AR-1221-1  
 R.T.: 0.000 min  
 Exp R.T. : 4.217 min  
 Response: 0  
 Conc: N.D.

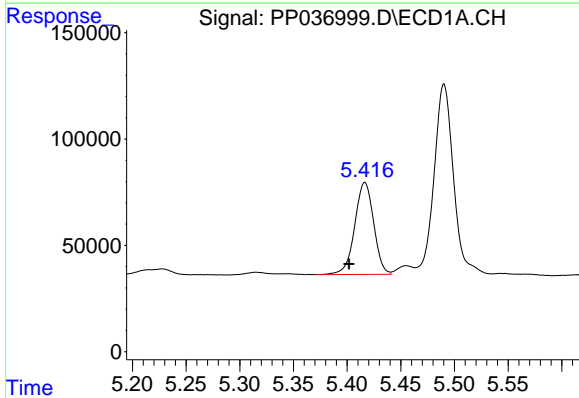


#9 AR-1221-2  
 R.T.: 5.315 min  
 Delta R.T.: 0.000 min  
 Response: 21914  
 Conc: 50.85 ng/ml

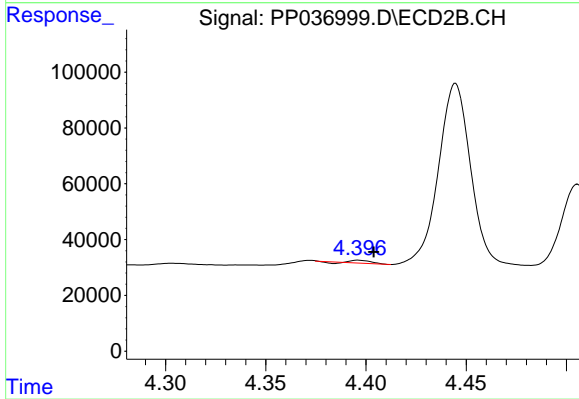
Instrument :  
 ECD\_P  
 ClientSampled :



#9 AR-1221-2  
 R.T.: 4.303 min  
 Delta R.T.: -0.012 min  
 Response: 11964  
 Conc: 40.08 ng/ml

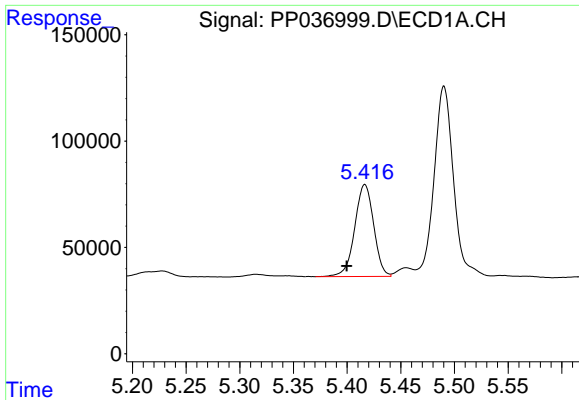


#10 AR-1221-3  
 R.T.: 5.417 min  
 Delta R.T.: 0.015 min  
 Response: 531788  
 Conc: 412.49 ng/ml



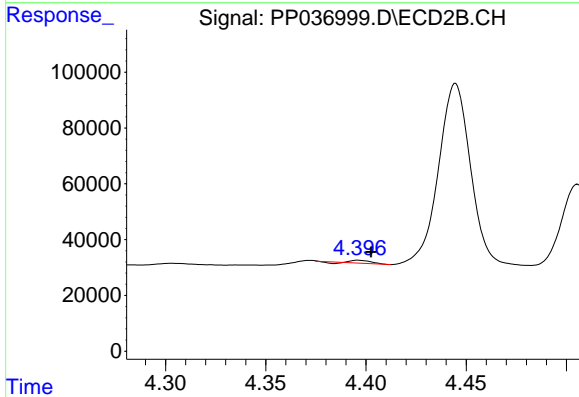
#10 AR-1221-3  
 R.T.: 4.396 min  
 Delta R.T.: -0.008 min  
 Response: 5990  
 Conc: 6.63 ng/ml



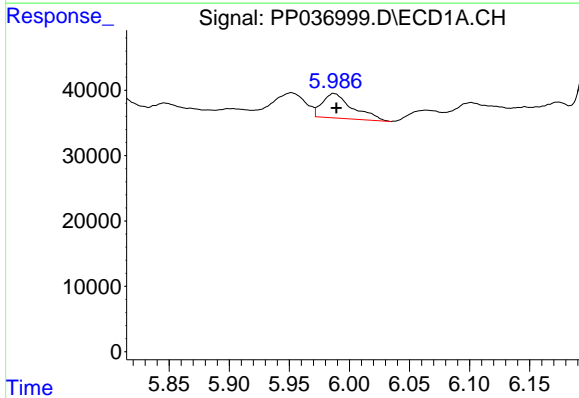


#11 AR-1232-1  
 R.T.: 5.417 min  
 Delta R.T.: 0.017 min  
 Response: 531788  
 Conc: 499.30 ng/ml

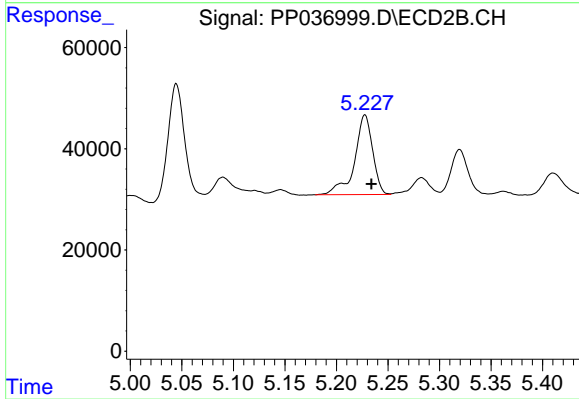
Instrument :  
 ECD\_P  
 ClientSampled :



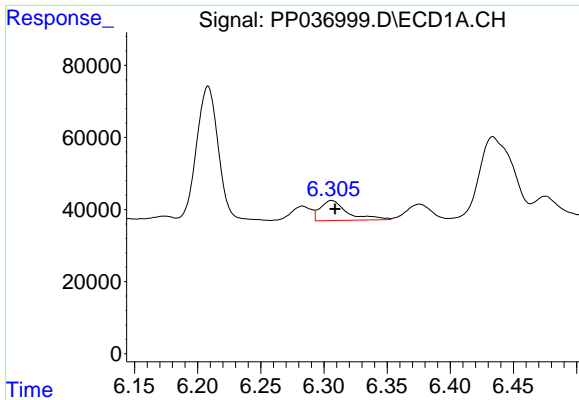
#11 AR-1232-1  
 R.T.: 4.396 min  
 Delta R.T.: -0.006 min  
 Response: 5990  
 Conc: 8.14 ng/ml



#12 AR-1232-2  
 R.T.: 5.987 min  
 Delta R.T.: -0.002 min  
 Response: 65752  
 Conc: 119.55 ng/ml



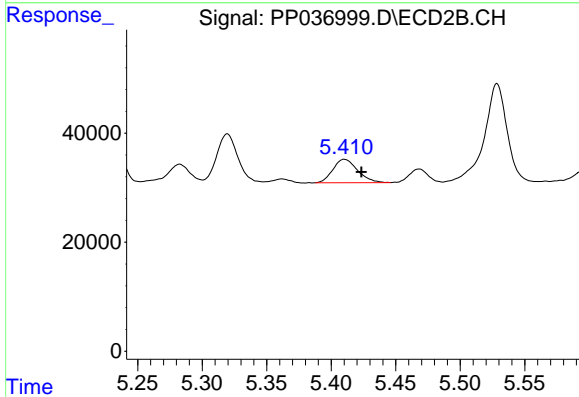
#12 AR-1232-2  
 R.T.: 5.228 min  
 Delta R.T.: -0.006 min  
 Response: 192096  
 Conc: 287.28 ng/ml



#13 AR-1232-3

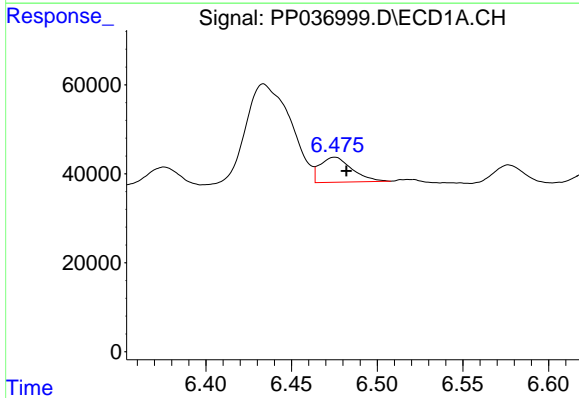
R.T.: 6.306 min  
 Delta R.T.: -0.003 min  
 Response: 83194  
 Conc: 81.44 ng/ml

Instrument :  
 ECD\_P  
 ClientSampleId :



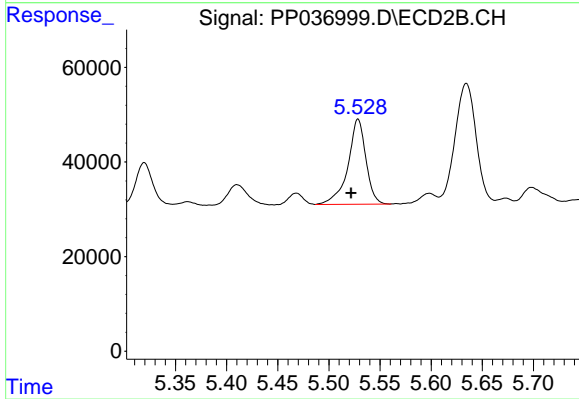
#13 AR-1232-3

R.T.: 5.410 min  
 Delta R.T.: -0.013 min  
 Response: 57027  
 Conc: 157.20 ng/ml



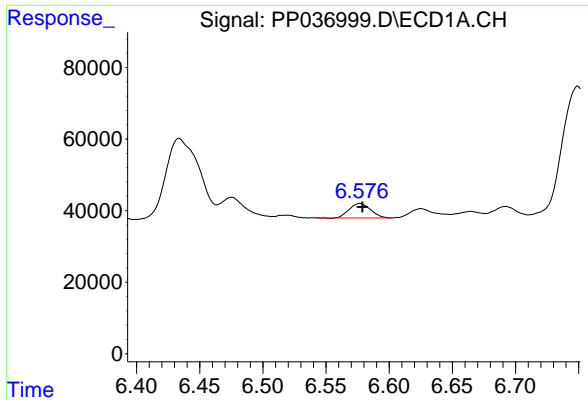
#14 AR-1232-4

R.T.: 6.475 min  
 Delta R.T.: -0.007 min  
 Response: 72944  
 Conc: 135.14 ng/ml



#14 AR-1232-4

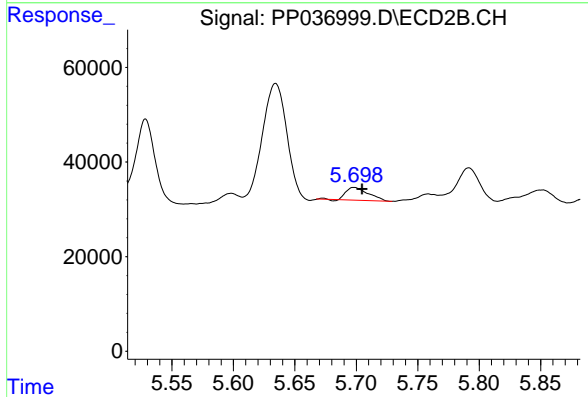
R.T.: 5.529 min  
 Delta R.T.: 0.007 min  
 Response: 220525  
 Conc: 704.23 ng/ml



#15 AR-1232-5

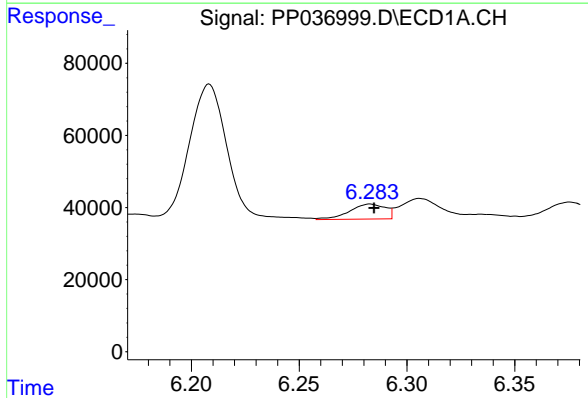
R.T.: 6.577 min  
 Delta R.T.: -0.002 min  
 Response: 47648  
 Conc: 130.01 ng/ml

Instrument :  
 ECD\_P  
 ClientSampleId :



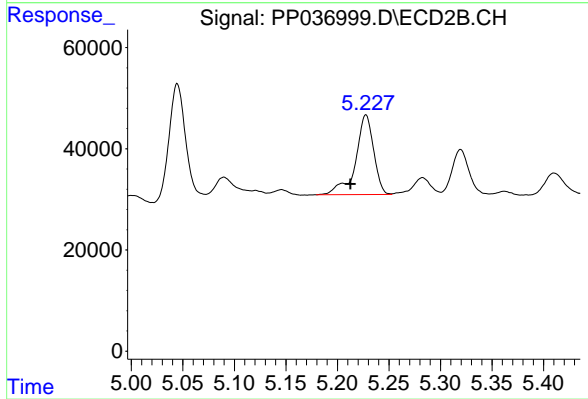
#15 AR-1232-5

R.T.: 5.698 min  
 Delta R.T.: -0.007 min  
 Response: 33607  
 Conc: 94.35 ng/ml



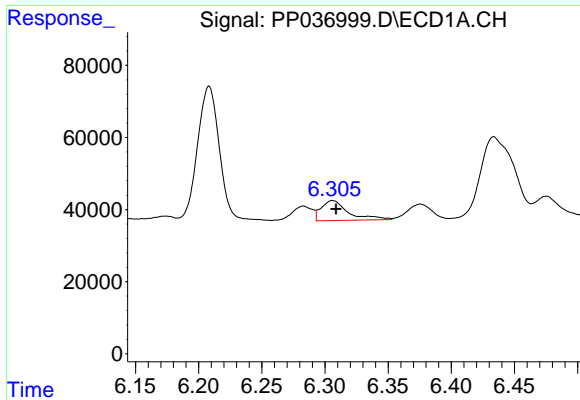
#16 AR-1242-1

R.T.: 6.283 min  
 Delta R.T.: -0.002 min  
 Response: 48576  
 Conc: 37.88 ng/ml



#16 AR-1242-1

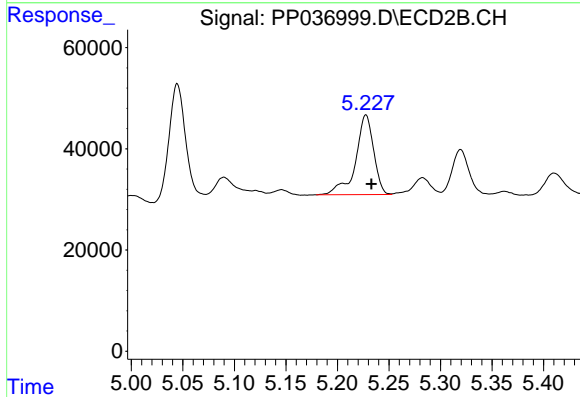
R.T.: 5.228 min  
 Delta R.T.: 0.015 min  
 Response: 192096  
 Conc: 215.82 ng/ml



#17 AR-1242-2

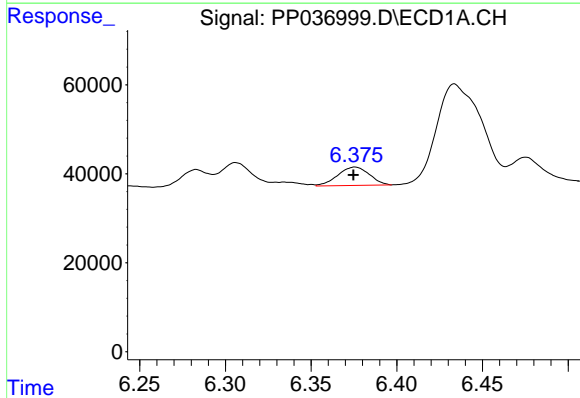
R.T.: 6.306 min  
 Delta R.T.: -0.003 min  
 Response: 83194  
 Conc: 45.59 ng/ml

Instrument :  
 ECD\_P  
 ClientSampled :



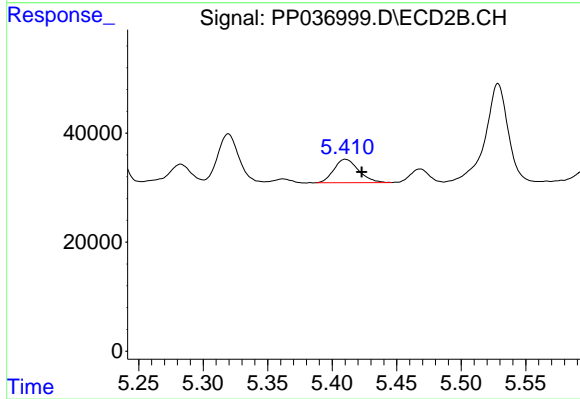
#17 AR-1242-2

R.T.: 5.228 min  
 Delta R.T.: -0.005 min  
 Response: 192096  
 Conc: 157.48 ng/ml



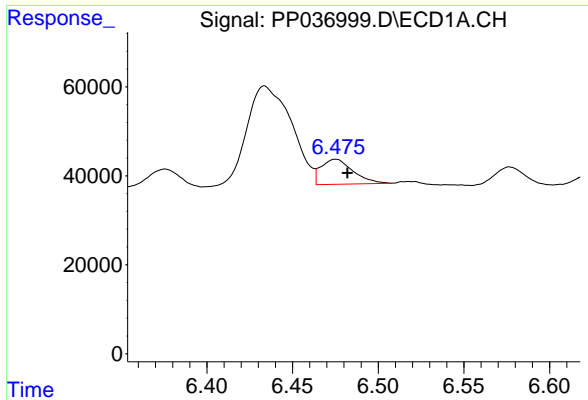
#18 AR-1242-3

R.T.: 6.376 min  
 Delta R.T.: 0.000 min  
 Response: 53097  
 Conc: 45.26 ng/ml



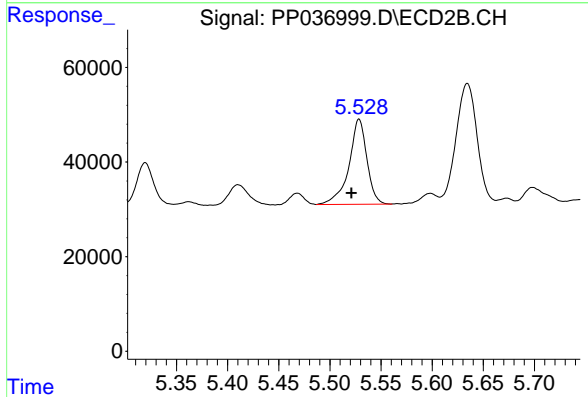
#18 AR-1242-3

R.T.: 5.410 min  
 Delta R.T.: -0.013 min  
 Response: 57027  
 Conc: 84.75 ng/ml

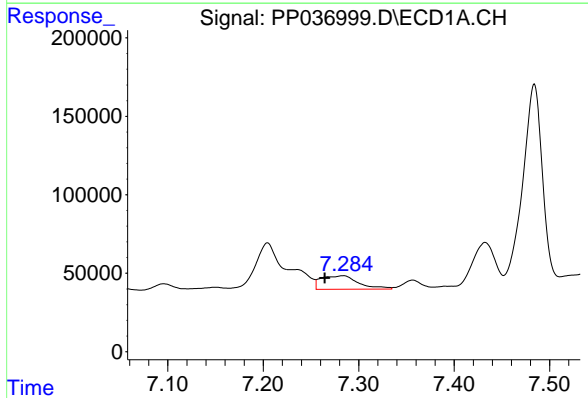


#19 AR-1242-4  
 R.T.: 6.475 min  
 Delta R.T.: -0.007 min  
 Response: 72944  
 Conc: 75.37 ng/ml

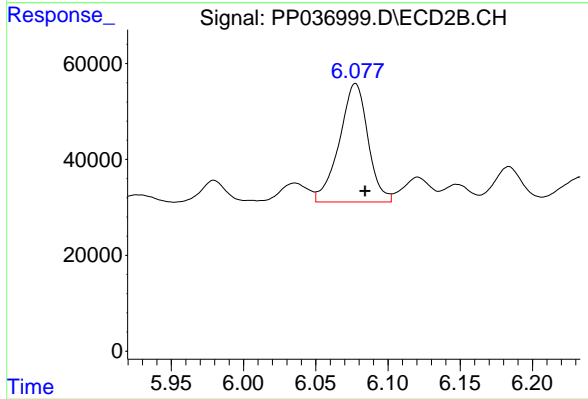
Instrument :  
 ECD\_P  
 ClientSampled :



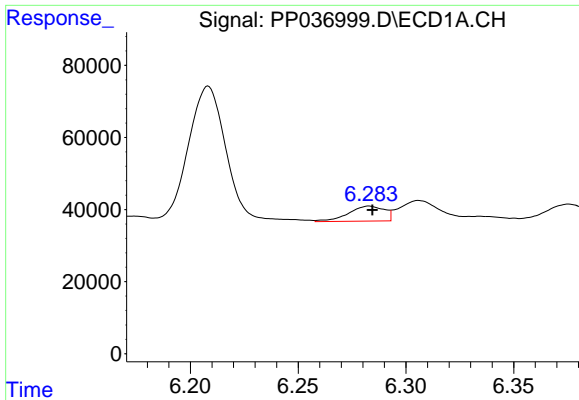
#19 AR-1242-4  
 R.T.: 5.529 min  
 Delta R.T.: 0.007 min  
 Response: 220525  
 Conc: 340.62 ng/ml



#20 AR-1242-5  
 R.T.: 7.284 min  
 Delta R.T.: 0.020 min  
 Response: 235405  
 Conc: 223.80 ng/ml

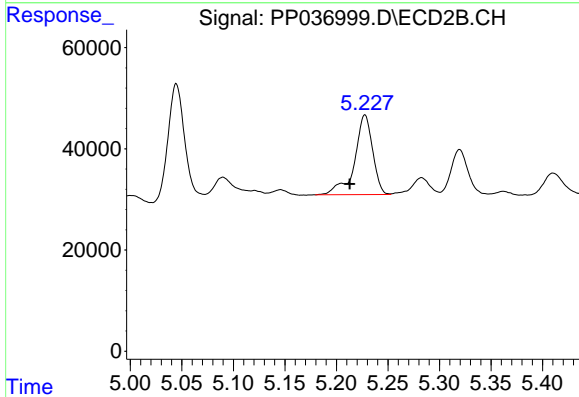


#20 AR-1242-5  
 R.T.: 6.077 min  
 Delta R.T.: -0.007 min  
 Response: 341255  
 Conc: 418.25 ng/ml

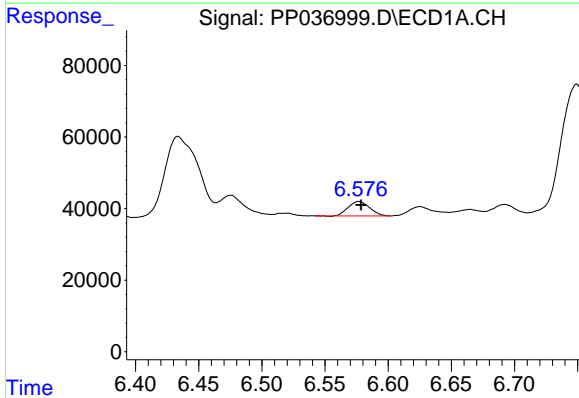


#21 AR-1248-1  
 R.T.: 6.283 min  
 Delta R.T.: -0.002 min  
 Response: 48576  
 Conc: 48.15 ng/ml

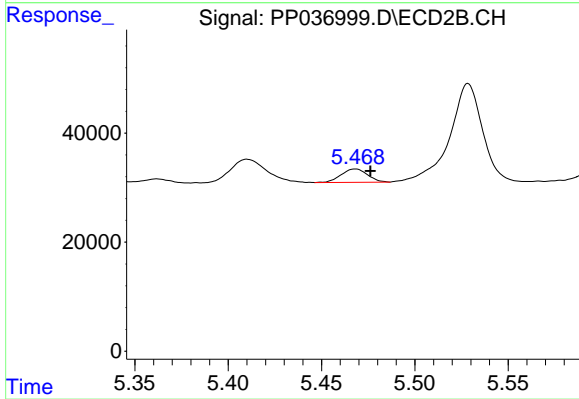
Instrument :  
 ECD\_P  
 ClientSampleId :



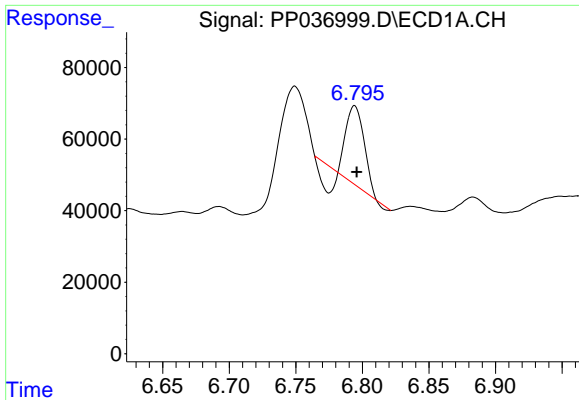
#21 AR-1248-1  
 R.T.: 5.228 min  
 Delta R.T.: 0.015 min  
 Response: 192096  
 Conc: 275.70 ng/ml



#22 AR-1248-2  
 R.T.: 6.577 min  
 Delta R.T.: -0.002 min  
 Response: 47648  
 Conc: 35.09 ng/ml



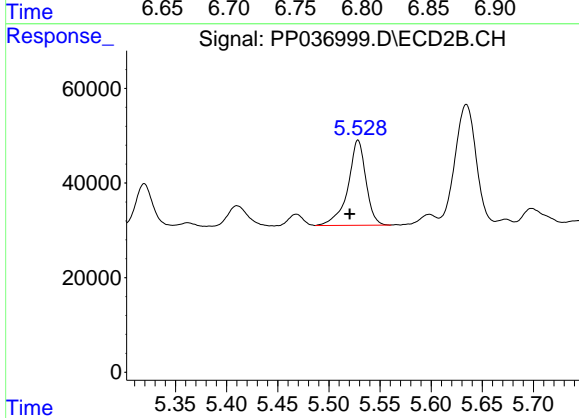
#22 AR-1248-2  
 R.T.: 5.468 min  
 Delta R.T.: -0.008 min  
 Response: 24177  
 Conc: 25.53 ng/ml



#23 AR-1248-3

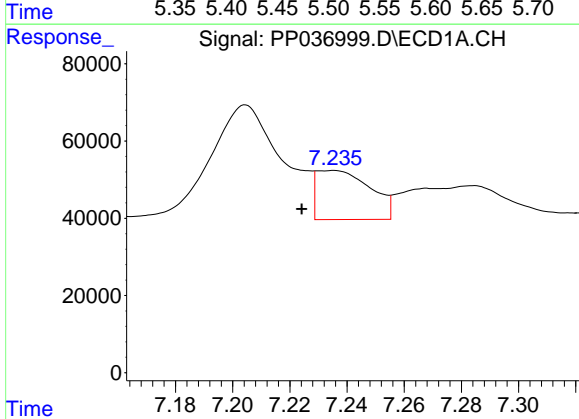
R.T.: 6.794 min  
 Delta R.T.: -0.002 min  
 Response: 158603  
 Conc: 97.48 ng/ml

Instrument :  
 ECD\_P  
 ClientSampleId :



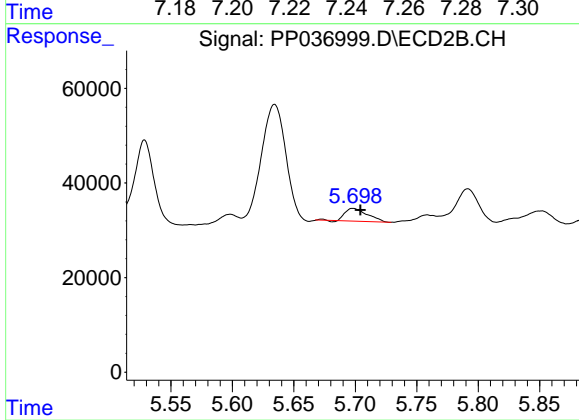
#23 AR-1248-3

R.T.: 5.529 min  
 Delta R.T.: 0.008 min  
 Response: 220525  
 Conc: 222.88 ng/ml



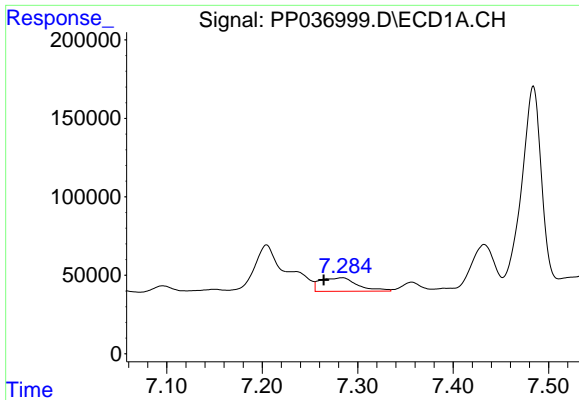
#24 AR-1248-4

R.T.: 7.235 min  
 Delta R.T.: 0.011 min  
 Response: 165920  
 Conc: 90.88 ng/ml



#24 AR-1248-4

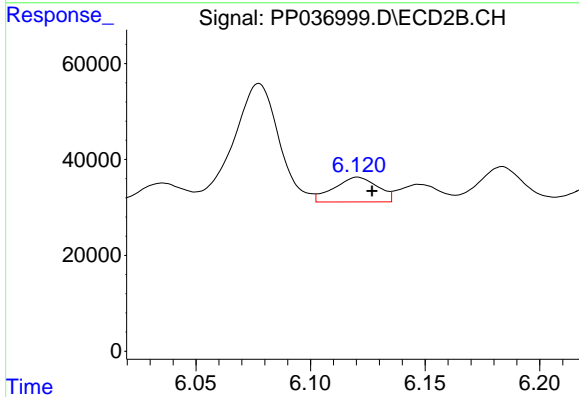
R.T.: 5.698 min  
 Delta R.T.: -0.006 min  
 Response: 33607  
 Conc: 28.73 ng/ml



#25 AR-1248-5

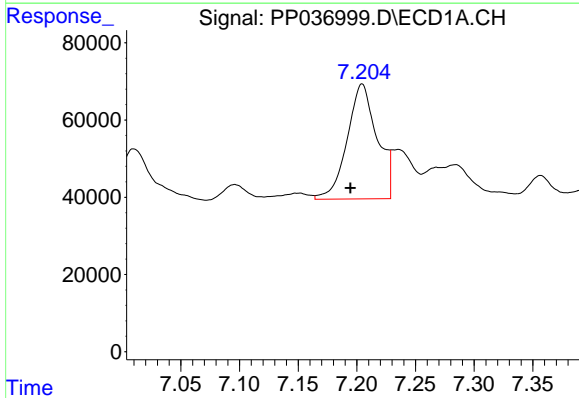
R.T.: 7.284 min  
 Delta R.T.: 0.019 min  
 Response: 235405  
 Conc: 130.56 ng/ml

Instrument :  
 ECD\_P  
 ClientSampled :



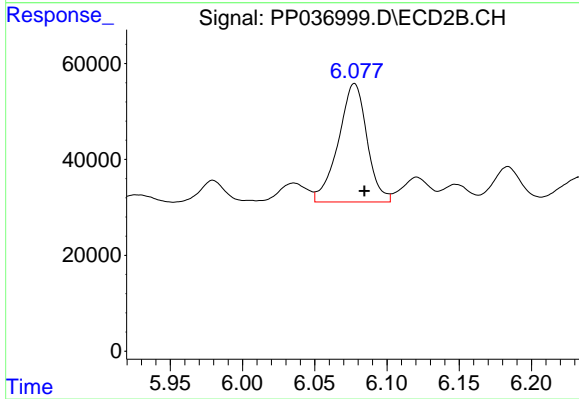
#25 AR-1248-5

R.T.: 6.121 min  
 Delta R.T.: -0.006 min  
 Response: 68140  
 Conc: 57.45 ng/ml



#26 AR-1254-1

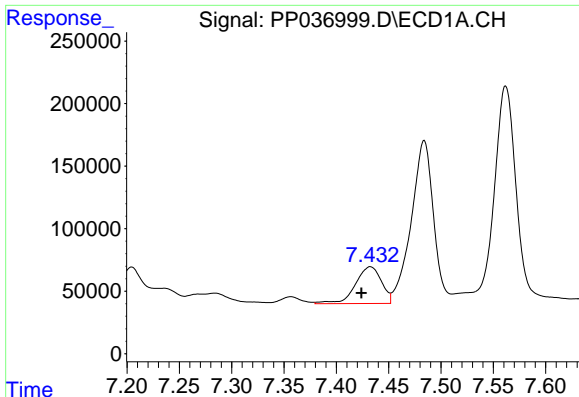
R.T.: 7.205 min  
 Delta R.T.: 0.010 min  
 Response: 527902  
 Conc: 300.17 ng/ml



#26 AR-1254-1

R.T.: 6.077 min  
 Delta R.T.: -0.007 min  
 Response: 341255  
 Conc: 201.41 ng/ml

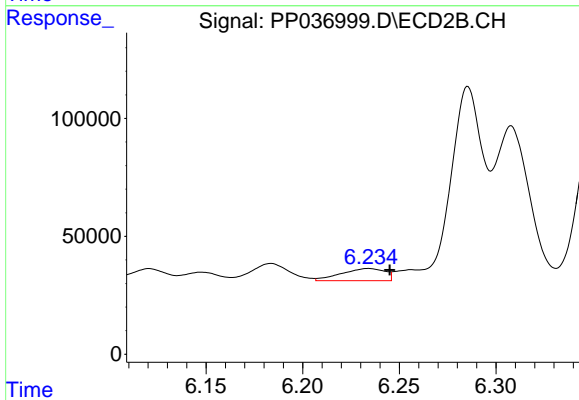




#27 AR-1254-2

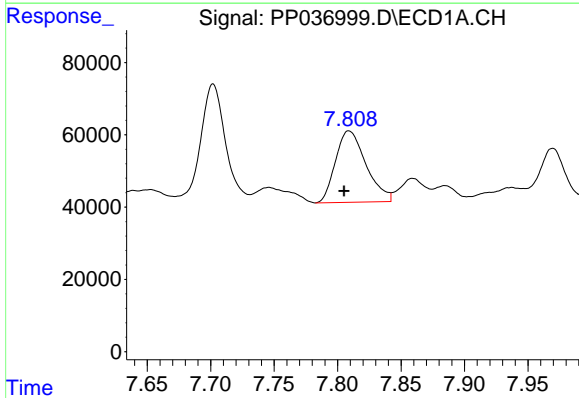
R.T.: 7.433 min  
 Delta R.T.: 0.009 min  
 Response: 509535  
 Conc: 188.32 ng/ml

Instrument :  
 ECD\_P  
 ClientSampleId :



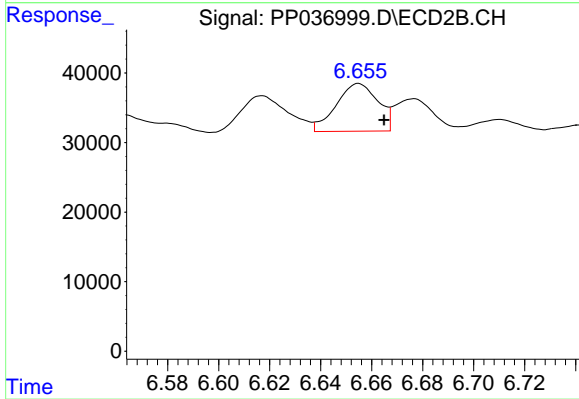
#27 AR-1254-2

R.T.: 6.234 min  
 Delta R.T.: -0.011 min  
 Response: 80833  
 Conc: 54.35 ng/ml



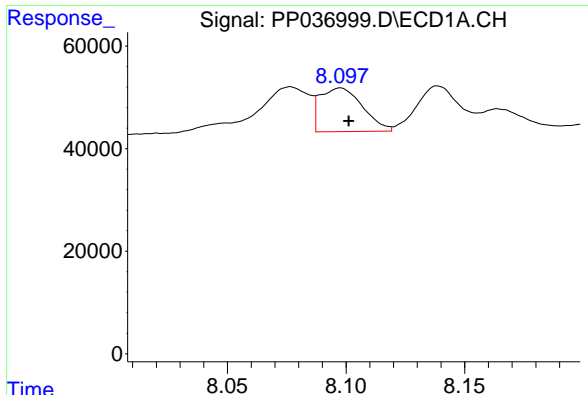
#28 AR-1254-3

R.T.: 7.809 min  
 Delta R.T.: 0.004 min  
 Response: 330812  
 Conc: 111.68 ng/ml



#28 AR-1254-3

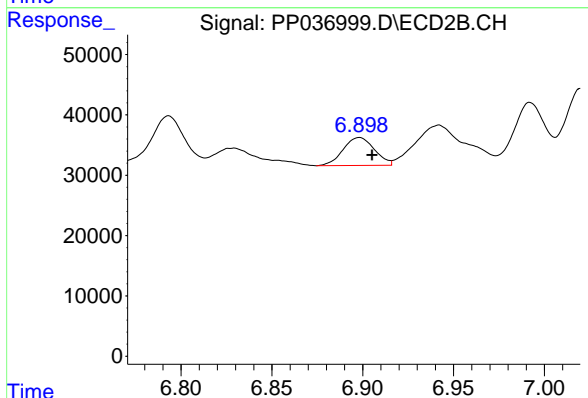
R.T.: 6.655 min  
 Delta R.T.: -0.010 min  
 Response: 77903  
 Conc: 32.04 ng/ml



#29 AR-1254-4

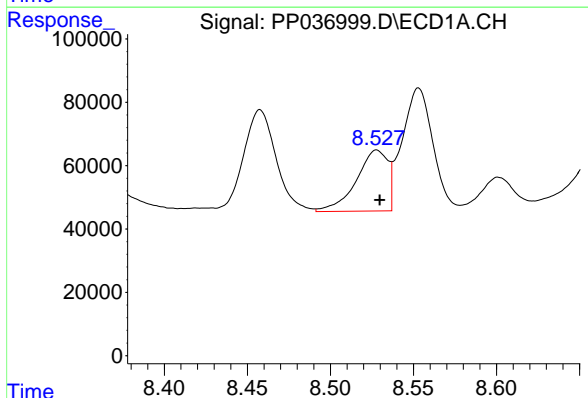
R.T.: 8.098 min  
 Delta R.T.: -0.003 min  
 Response: 105900  
 Conc: 48.17 ng/ml

Instrument :  
 ECD\_P  
 ClientSampled :



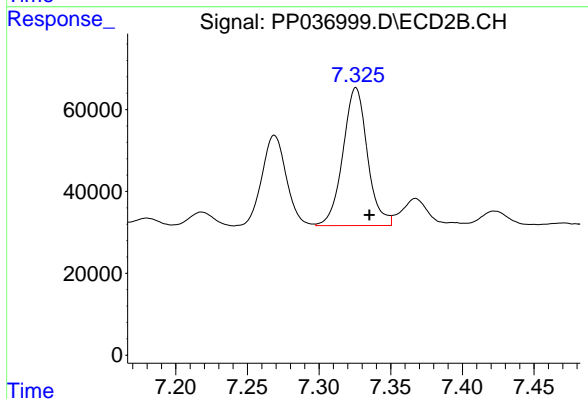
#29 AR-1254-4

R.T.: 6.898 min  
 Delta R.T.: -0.007 min  
 Response: 55492  
 Conc: 35.86 ng/ml



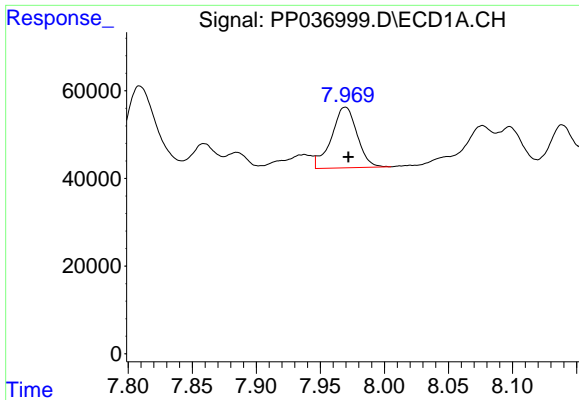
#30 AR-1254-5

R.T.: 8.528 min  
 Delta R.T.: -0.002 min  
 Response: 253778  
 Conc: 106.71 ng/ml



#30 AR-1254-5

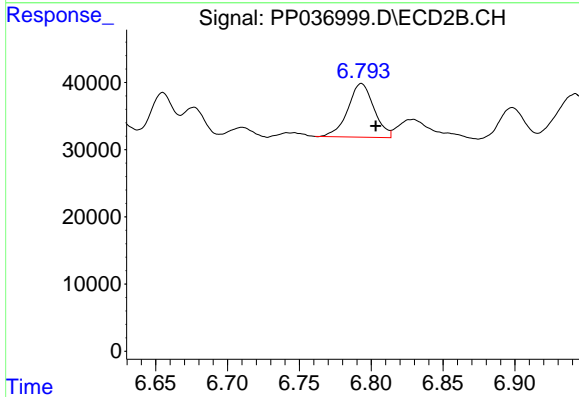
R.T.: 7.326 min  
 Delta R.T.: -0.010 min  
 Response: 400725  
 Conc: 186.36 ng/ml



#31 AR-1260-1

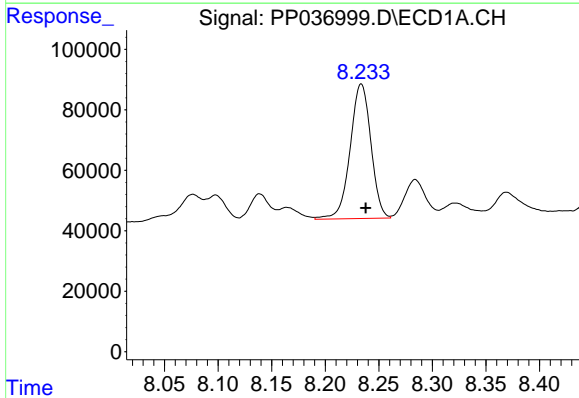
R.T.: 7.969 min  
 Delta R.T.: -0.002 min  
 Response: 192760  
 Conc: 88.81 ng/ml

Instrument :  
 ECD\_P  
 ClientSampled :



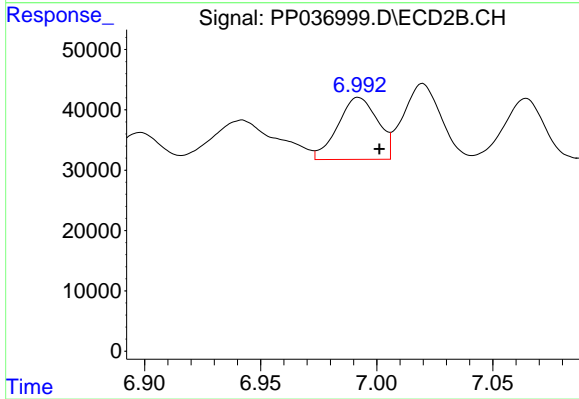
#31 AR-1260-1

R.T.: 6.793 min  
 Delta R.T.: -0.010 min  
 Response: 100829  
 Conc: 62.63 ng/ml



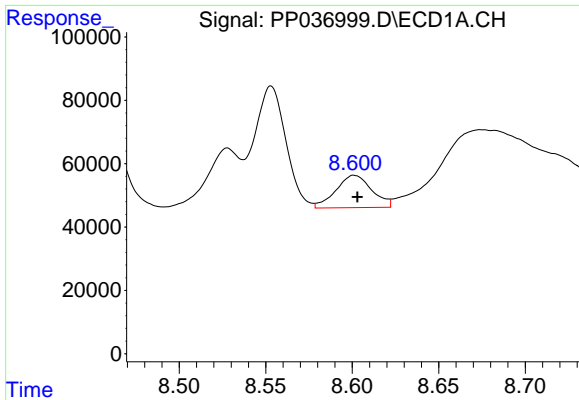
#32 AR-1260-2

R.T.: 8.234 min  
 Delta R.T.: -0.004 min  
 Response: 600642  
 Conc: 234.36 ng/ml



#32 AR-1260-2

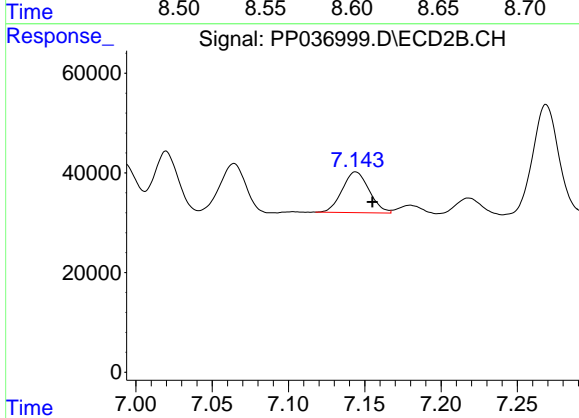
R.T.: 6.992 min  
 Delta R.T.: -0.009 min  
 Response: 122732  
 Conc: 63.29 ng/ml



#33 AR-1260-3

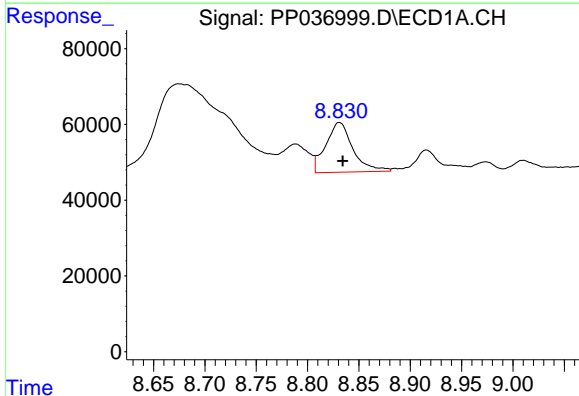
R.T.: 8.601 min  
 Delta R.T.: -0.002 min  
 Response: 148014  
 Conc: 73.84 ng/ml

Instrument :  
 ECD\_P  
 ClientSampleId :



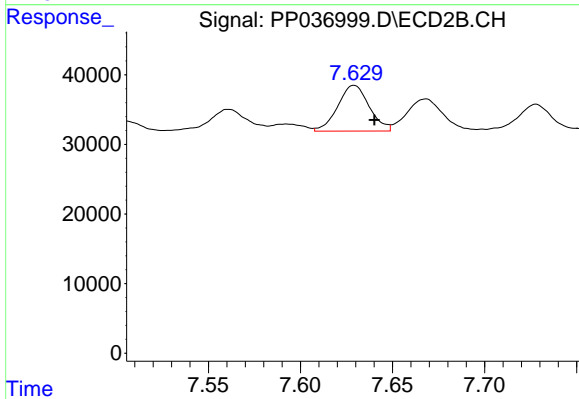
#33 AR-1260-3

R.T.: 7.144 min  
 Delta R.T.: -0.011 min  
 Response: 100519  
 Conc: 55.27 ng/ml



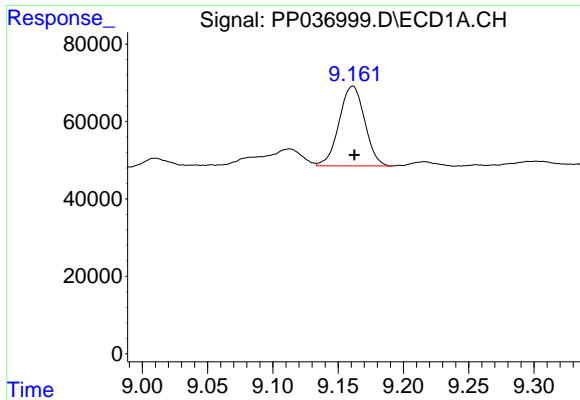
#34 AR-1260-4

R.T.: 8.831 min  
 Delta R.T.: -0.003 min  
 Response: 241467  
 Conc: 101.92 ng/ml



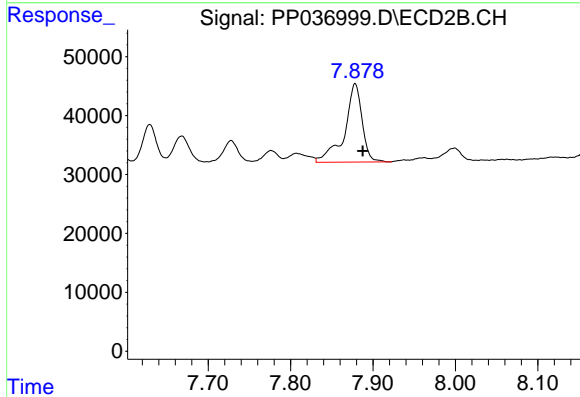
#34 AR-1260-4

R.T.: 7.629 min  
 Delta R.T.: -0.011 min  
 Response: 78103  
 Conc: 50.36 ng/ml

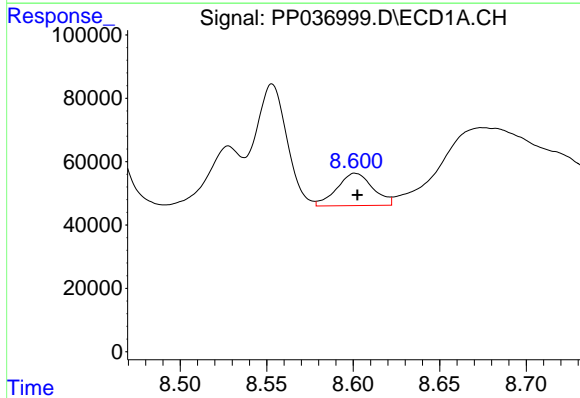


#35 AR-1260-5  
 R.T.: 9.161 min  
 Delta R.T.: -0.001 min  
 Response: 281157  
 Conc: 63.01 ng/ml

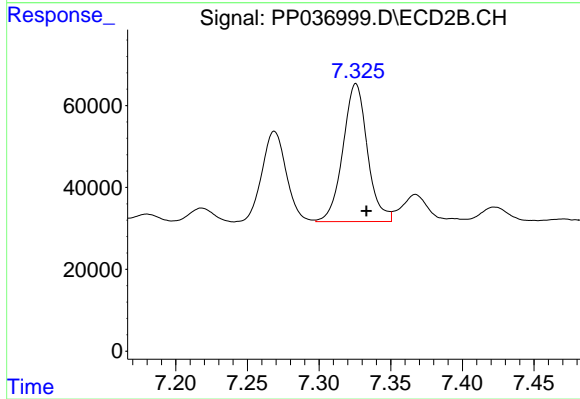
Instrument :  
 ECD\_P  
 ClientSampleId :



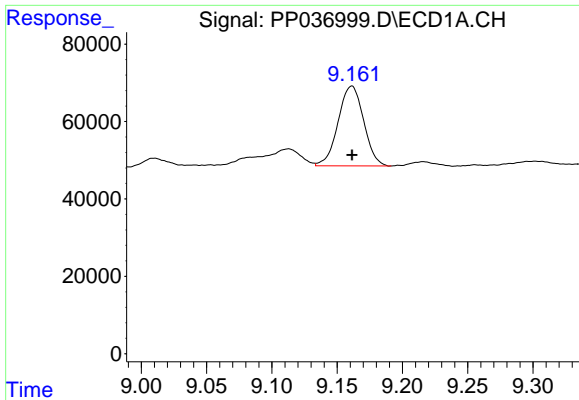
#35 AR-1260-5  
 R.T.: 7.878 min  
 Delta R.T.: -0.009 min  
 Response: 196617  
 Conc: 53.50 ng/ml



#36 AR-1262-1  
 R.T.: 8.601 min  
 Delta R.T.: -0.001 min  
 Response: 148014  
 Conc: 51.94 ng/ml



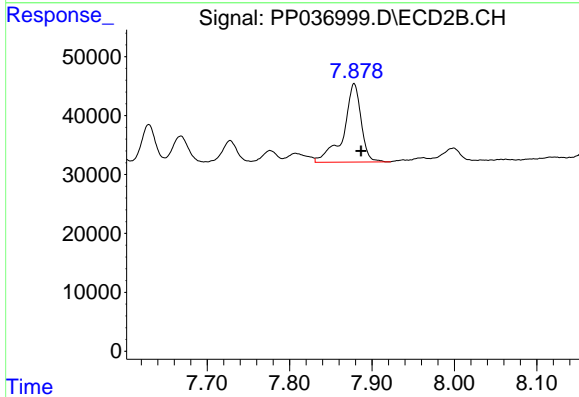
#36 AR-1262-1  
 R.T.: 7.326 min  
 Delta R.T.: -0.007 min  
 Response: 400725  
 Conc: 336.21 ng/ml



#37 AR-1262-2

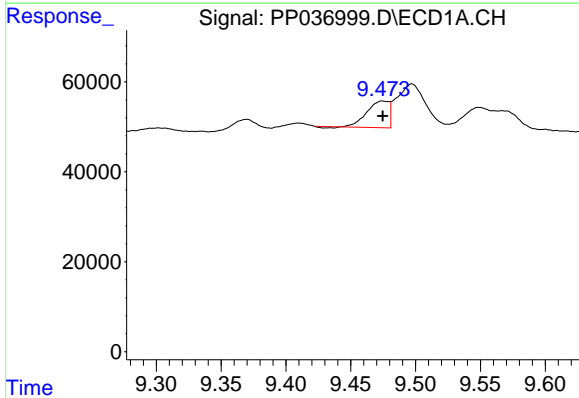
R.T.: 9.161 min  
 Delta R.T.: 0.000 min  
 Response: 281157  
 Conc: 55.34 ng/ml

Instrument :  
 ECD\_P  
 ClientSampleId :



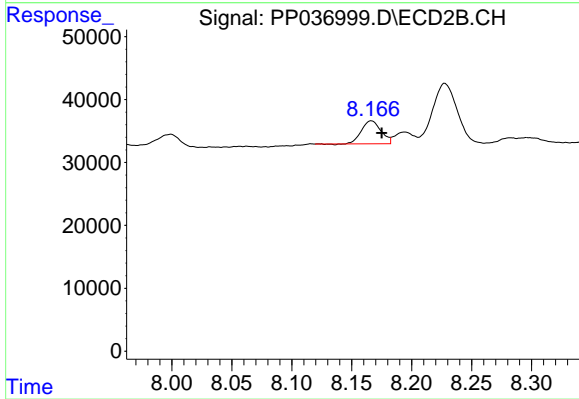
#37 AR-1262-2

R.T.: 7.878 min  
 Delta R.T.: -0.008 min  
 Response: 196617  
 Conc: 50.16 ng/ml



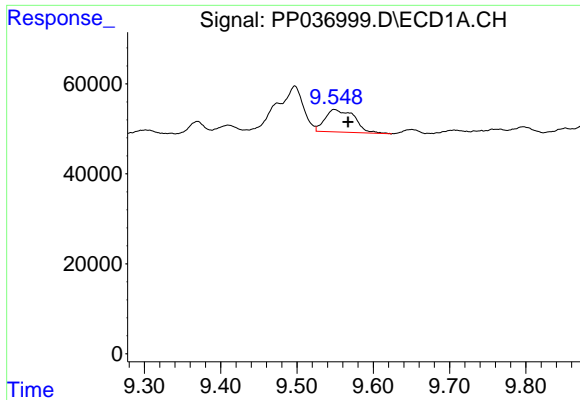
#38 AR-1262-3

R.T.: 9.475 min  
 Delta R.T.: 0.000 min  
 Response: 68735  
 Conc: 18.55 ng/ml



#38 AR-1262-3

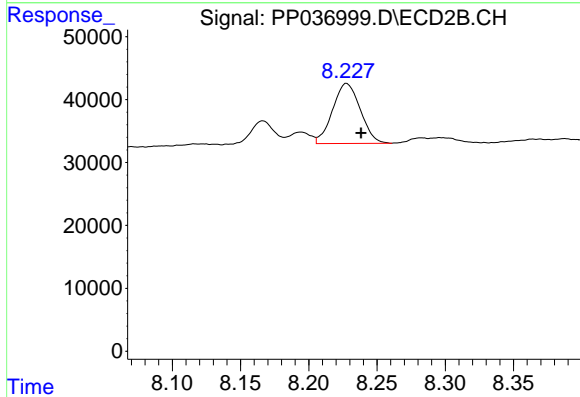
R.T.: 8.166 min  
 Delta R.T.: -0.009 min  
 Response: 41281  
 Conc: 25.94 ng/ml



#39 AR-1262-4

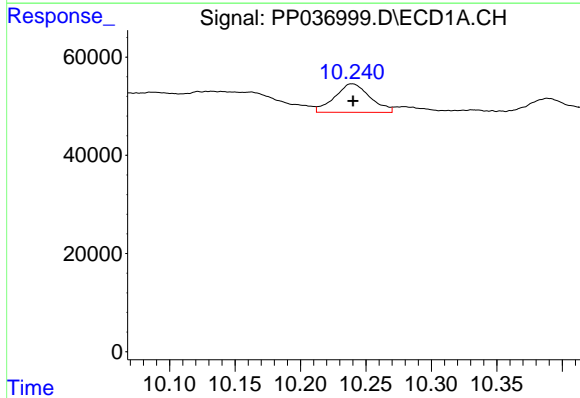
R.T.: 9.549 min  
 Delta R.T.: -0.018 min  
 Response: 134274  
 Conc: 46.75 ng/ml

Instrument :  
 ECD\_P  
 ClientSampled :



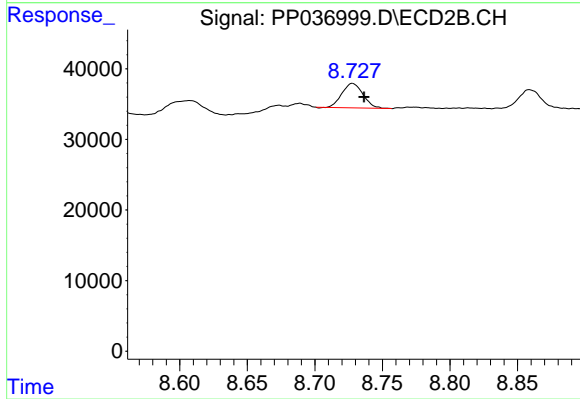
#39 AR-1262-4

R.T.: 8.228 min  
 Delta R.T.: -0.011 min  
 Response: 134824  
 Conc: 45.30 ng/ml



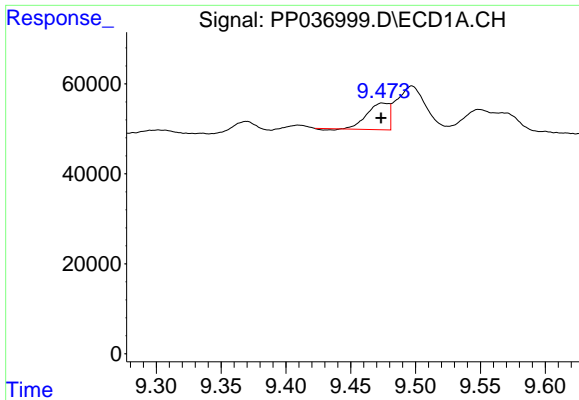
#40 AR-1262-5

R.T.: 10.239 min  
 Delta R.T.: 0.000 min  
 Response: 109335  
 Conc: 51.75 ng/ml



#40 AR-1262-5

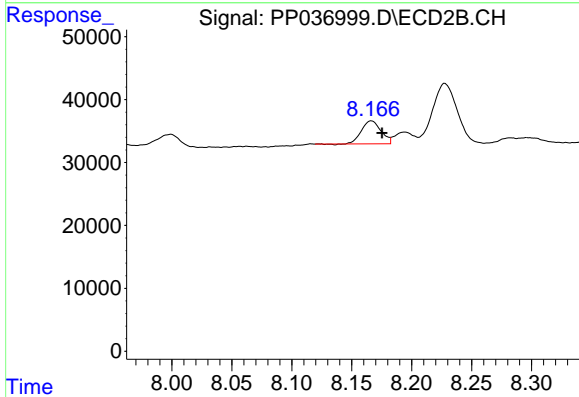
R.T.: 8.728 min  
 Delta R.T.: -0.009 min  
 Response: 37574  
 Conc: 26.37 ng/ml



#41 AR-1268-1

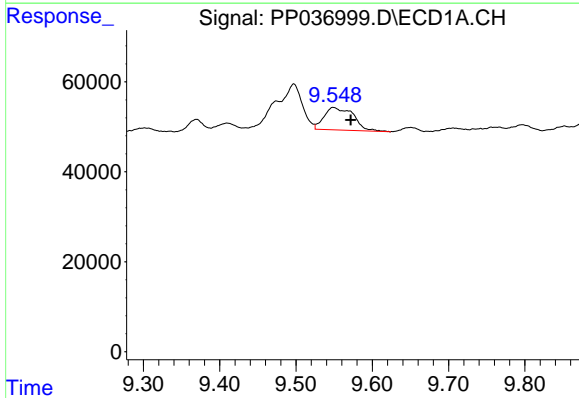
R.T.: 9.475 min  
 Delta R.T.: 0.001 min  
 Response: 68735  
 Conc: 11.46 ng/ml

Instrument :  
 ECD\_P  
 ClientSampleId :



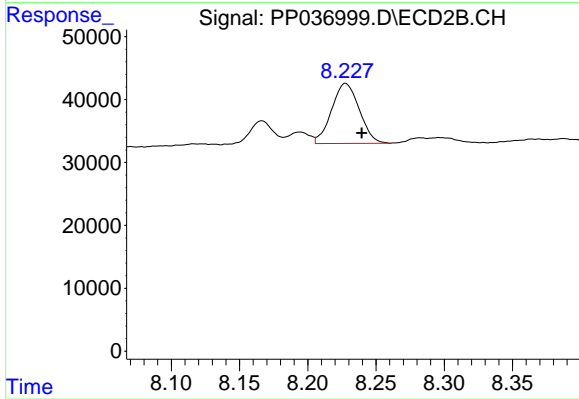
#41 AR-1268-1

R.T.: 8.166 min  
 Delta R.T.: -0.009 min  
 Response: 41281  
 Conc: 8.87 ng/ml



#42 AR-1268-2

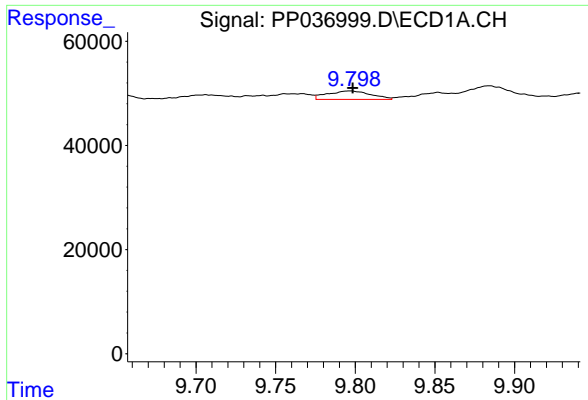
R.T.: 9.549 min  
 Delta R.T.: -0.022 min  
 Response: 134274  
 Conc: 23.56 ng/ml



#42 AR-1268-2

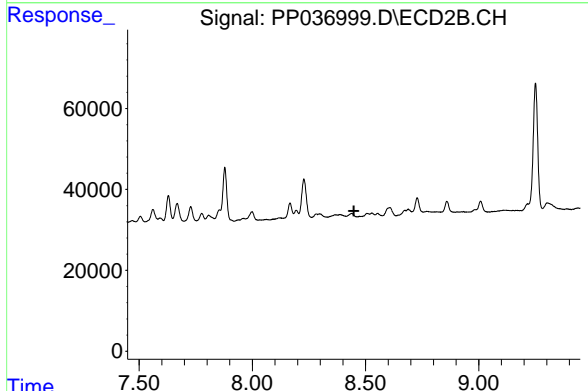
R.T.: 8.228 min  
 Delta R.T.: -0.012 min  
 Response: 134824  
 Conc: 31.26 ng/ml



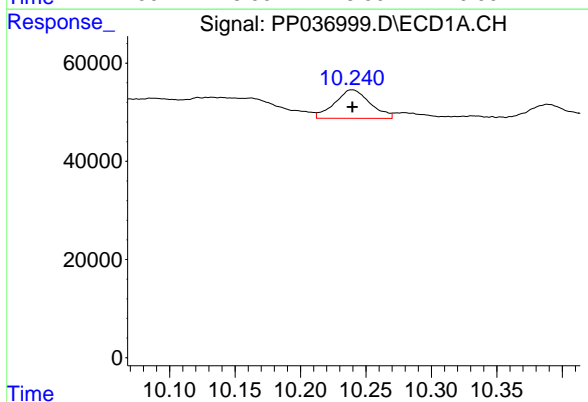


#43 AR-1268-3  
 R.T.: 9.797 min  
 Delta R.T.: -0.002 min  
 Response: 30461  
 Conc: 6.34 ng/ml

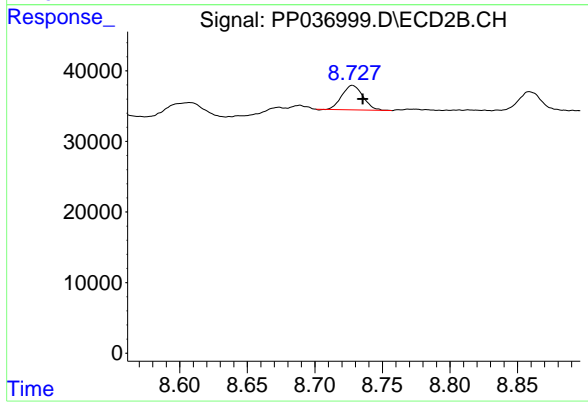
Instrument :  
 ECD\_P  
 ClientSampled :



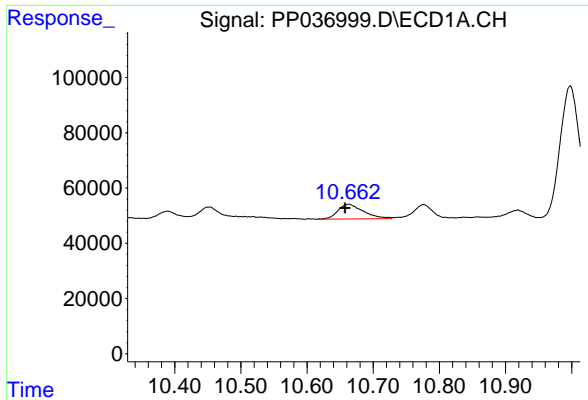
#43 AR-1268-3  
 R.T.: 0.000 min  
 Exp R.T. : 8.449 min  
 Response: 0  
 Conc: N.D.



#44 AR-1268-4  
 R.T.: 10.239 min  
 Delta R.T.: 0.000 min  
 Response: 109335  
 Conc: 46.42 ng/ml



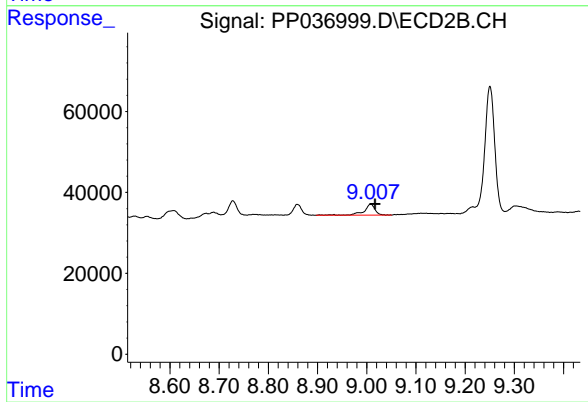
#44 AR-1268-4  
 R.T.: 8.728 min  
 Delta R.T.: -0.008 min  
 Response: 37574  
 Conc: 23.62 ng/ml



#45 AR-1268-5

R.T.: 10.663 min  
Delta R.T.: 0.006 min  
Response: 143823  
Conc: 9.35 ng/ml

Instrument :  
ECD\_P  
ClientSampleId :



#45 AR-1268-5

R.T.: 9.008 min  
Delta R.T.: -0.009 min  
Response: 42971  
Conc: 3.63 ng/ml