

Data Path : Z:\pestpcbsrv\HPCHEM1\ECD_P\Data\PP070325\
 Data File : PP073488.D
 Signal(s) : Signal #1: ECD1A.ch Signal #2: ECD2B.ch
 Acq On : 03 Jul 2025 09:35
 Operator : YP\AJ
 Sample : I.BLK
 Misc :
 ALS Vial : 2 Sample Multiplier: 1

Instrument :
 ECD_P
 ClientSampleId :
 I.BLK

Integration File signal 1: autoint1.e
 Integration File signal 2: autoint2.e
 Quant Time: Jul 03 11:57:07 2025
 Quant Method : Z:\pestpcbsrv\HPCHEM1\ECD_P\methods\PP070125.M
 Quant Title : GC EXTRACTABLES
 QLast Update : Wed Jul 02 04:02:48 2025
 Response via : Initial Calibration
 Integrator: ChemStation

Volume Inj. : 2 µl
 Signal #1 Phase : ZB-MR1 Signal #2 Phase: ZB-MR2
 Signal #1 Info : 30Mx0.32mmx 0.50µ Signal #2 Info : 30M x 0.32mm x 0.25µm

| Compound | RT#1 | RT#2 | Resp#1 | Resp#2 | ng/ml | ng/ml |
|-----------------------------|--------|-------|----------|----------|--------|--------|
| ----- | | | | | | |
| System Monitoring Compounds | | | | | | |
| 1) SA Tetrachlo... | 4.489 | 3.781 | 29411920 | 32248004 | 18.425 | 18.183 |
| 2) SA Decachlor... | 10.178 | 8.785 | 24701370 | 26346468 | 17.383 | 19.041 |

Target Compounds

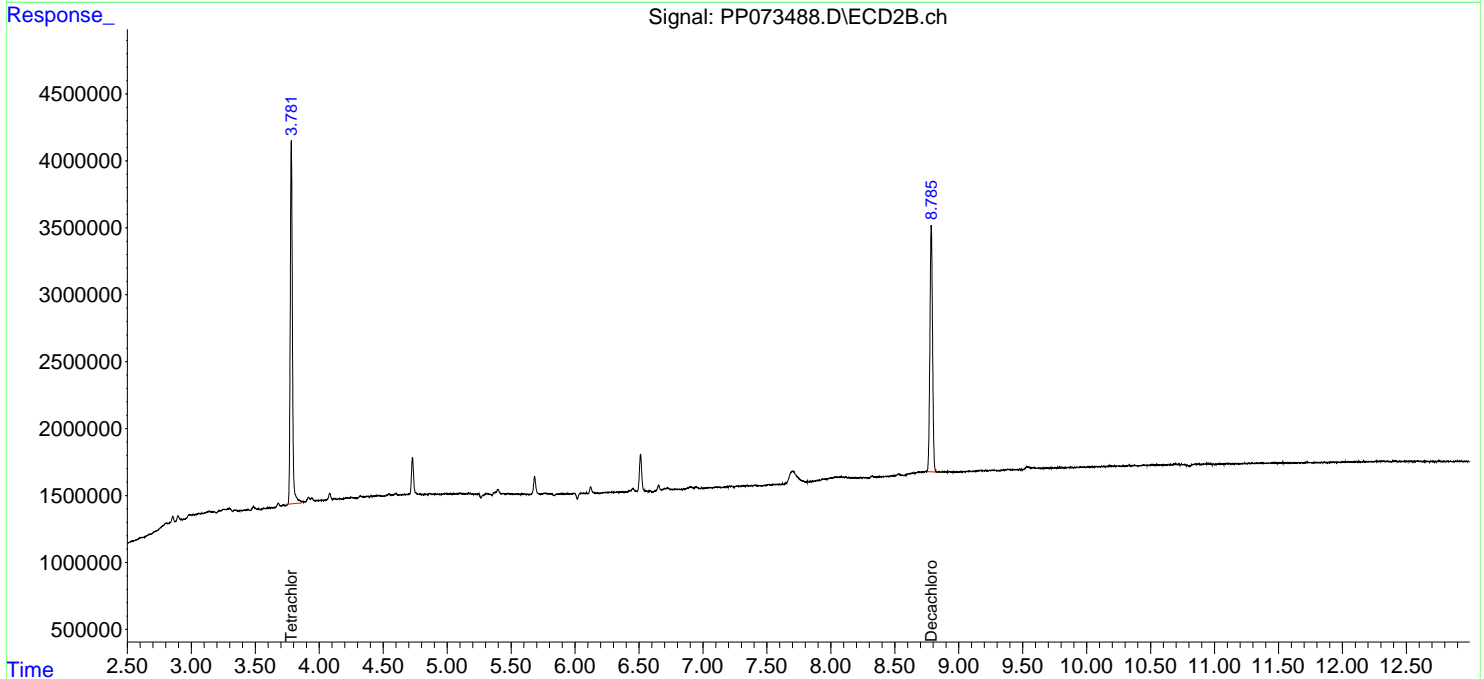
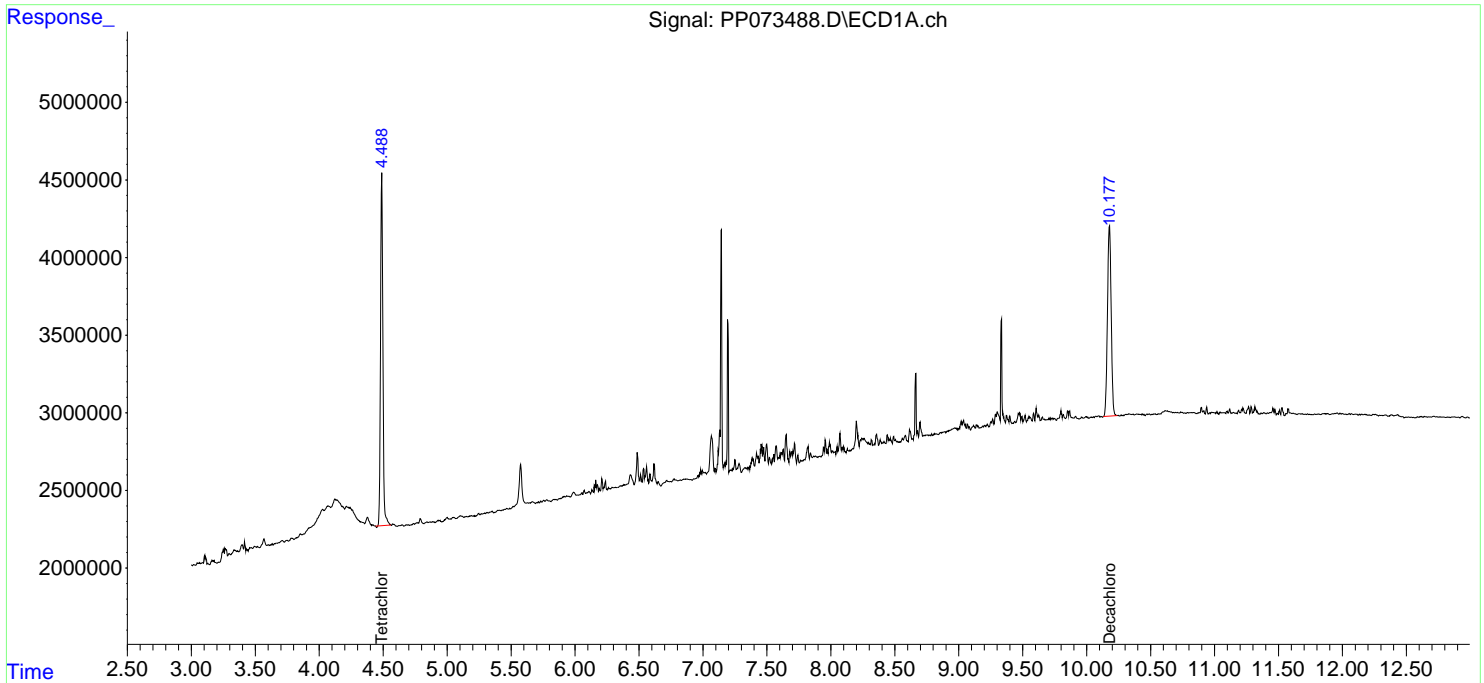
(f)=RT Delta > 1/2 Window (#)=Amounts differ by > 25% (m)=manual int.

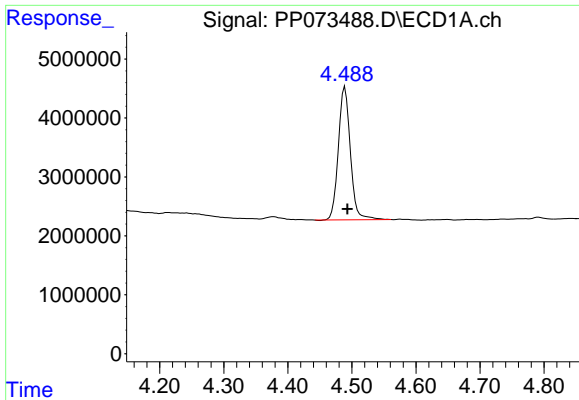
Data Path : Z:\pestpcbsrv\HPCHEM1\ECD_P\Data\PP070325\
 Data File : PP073488.D
 Signal(s) : Signal #1: ECD1A.ch Signal #2: ECD2B.ch
 Acq On : 03 Jul 2025 09:35
 Operator : YP\AJ
 Sample : I.BLK
 Misc :
 ALS Vial : 2 Sample Multiplier: 1

Instrument :
 ECD_P
 ClientSampleId :
 I.BLK

Integration File signal 1: autoint1.e
 Integration File signal 2: autoint2.e
 Quant Time: Jul 03 11:57:07 2025
 Quant Method : Z:\pestpcbsrv\HPCHEM1\ECD_P\methods\PP070125.M
 Quant Title : GC EXTRACTABLES
 QLast Update : Wed Jul 02 04:02:48 2025
 Response via : Initial Calibration
 Integrator: ChemStation

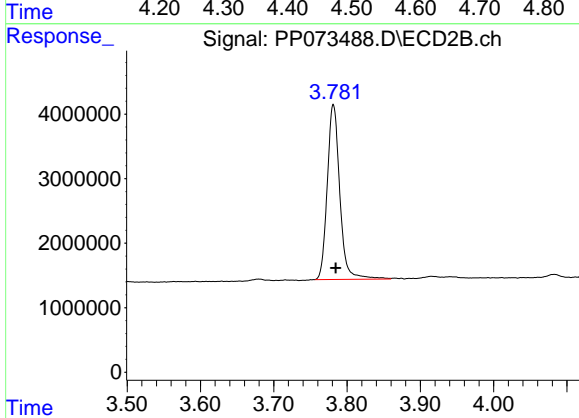
Volume Inj. : 2 µl
 Signal #1 Phase : ZB-MR1 Signal #2 Phase: ZB-MR2
 Signal #1 Info : 30Mx0.32mmx 0.50µ Signal #2 Info : 30M x 0.32mm x 0.25µm



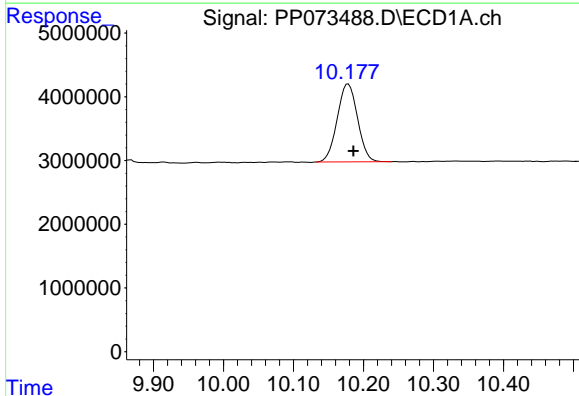


#1 Tetrachloro-m-xylene
 R.T.: 4.489 min
 Delta R.T.: -0.004 min
 Response: 29411920
 Conc: 18.43 ng/ml

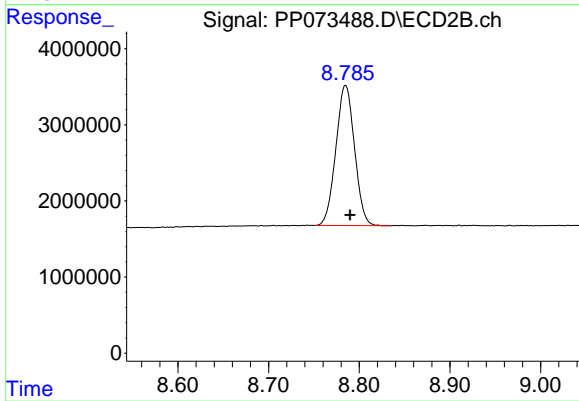
Instrument :
 ECD_P
 ClientSampleId :
 I.BLK



#1 Tetrachloro-m-xylene
 R.T.: 3.781 min
 Delta R.T.: -0.003 min
 Response: 32248004
 Conc: 18.18 ng/ml



#2 Decachlorobiphenyl
 R.T.: 10.178 min
 Delta R.T.: -0.007 min
 Response: 24701370
 Conc: 17.38 ng/ml



#2 Decachlorobiphenyl
 R.T.: 8.785 min
 Delta R.T.: -0.005 min
 Response: 26346468
 Conc: 19.04 ng/ml