

Data Path : Z:\pestpcbsrv\HPCHEM1\ECD_P\Data\PP070325\
 Data File : PP073499.D
 Signal(s) : Signal #1: ECD1A.ch Signal #2: ECD2B.ch
 Acq On : 03 Jul 2025 14:59
 Operator : YP\AJ
 Sample : AR1242CCC500
 Misc :
 ALS Vial : 4 Sample Multiplier: 1

Instrument :
 ECD_P
 ClientSampleId :
 AR1242CCC500

Integration File signal 1: autoint1.e
 Integration File signal 2: autoint2.e
 Quant Time: Jul 04 04:03:25 2025
 Quant Method : Z:\pestpcbsrv\HPCHEM1\ECD_P\methods\PP070125.M
 Quant Title : GC EXTRACTABLES
 QLast Update : Wed Jul 02 04:02:48 2025
 Response via : Initial Calibration
 Integrator: ChemStation

Volume Inj. : 2 µl
 Signal #1 Phase : ZB-MR1 Signal #2 Phase: ZB-MR2
 Signal #1 Info : 30Mx0.32mmx 0.50µ Signal #2 Info : 30M x 0.32mm x 0.25µm

Compound	RT#1	RT#2	Resp#1	Resp#2	ng/ml	ng/ml

System Monitoring Compounds						
1) SA Tetrachlo...	4.491	3.783	76227937	85880729	47.753	48.424
2) SA Decachlor...	10.183	8.789	65020276	65600248	45.757	47.411
Target Compounds						
16) L4 AR-1242-1	5.643	4.863	23004378	27005298	452.747	462.415
17) L4 AR-1242-2	5.664	4.880	34393778	40182670	453.596	465.745
18) L4 AR-1242-3	5.726	5.057	21381210	21785910	445.098	474.800
19) L4 AR-1242-4	5.824	5.141	18004155	21030166	467.568	478.939
20) L4 AR-1242-5	6.553	5.663	19342317	27266653	455.073	498.325

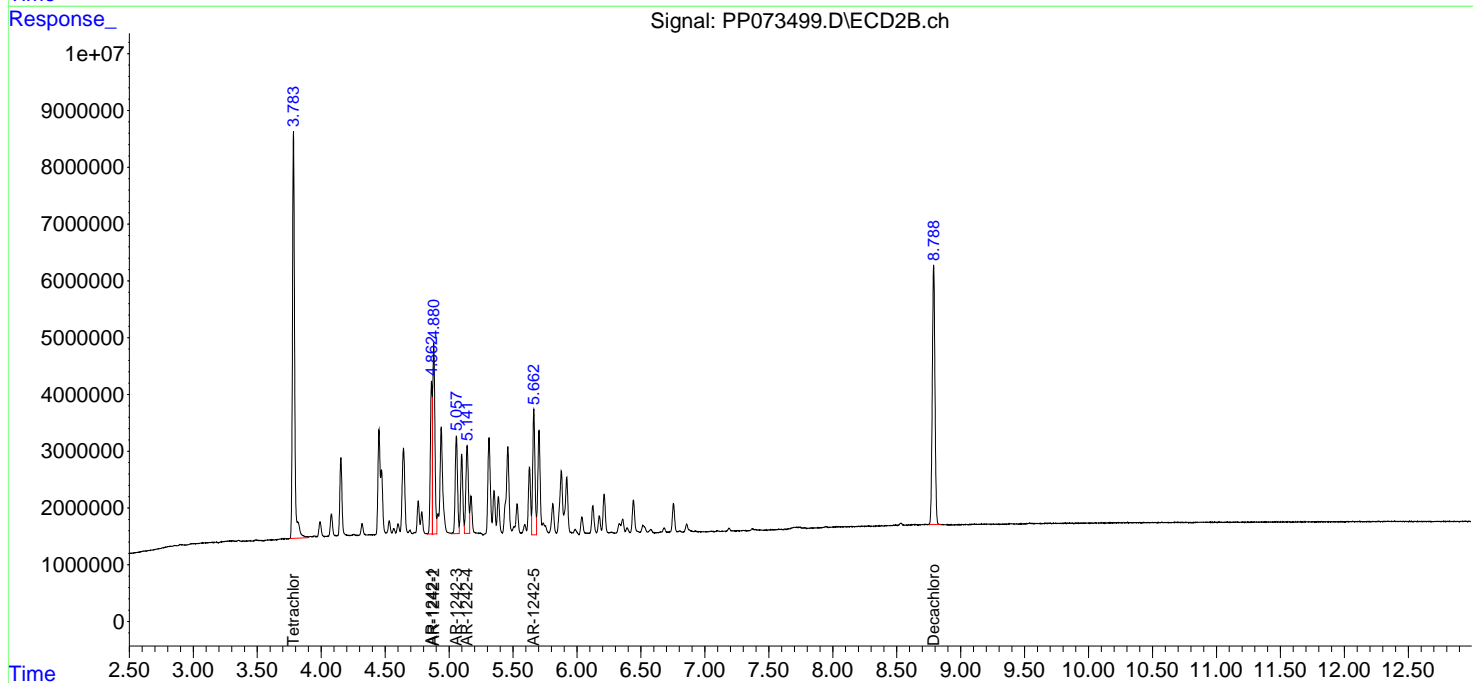
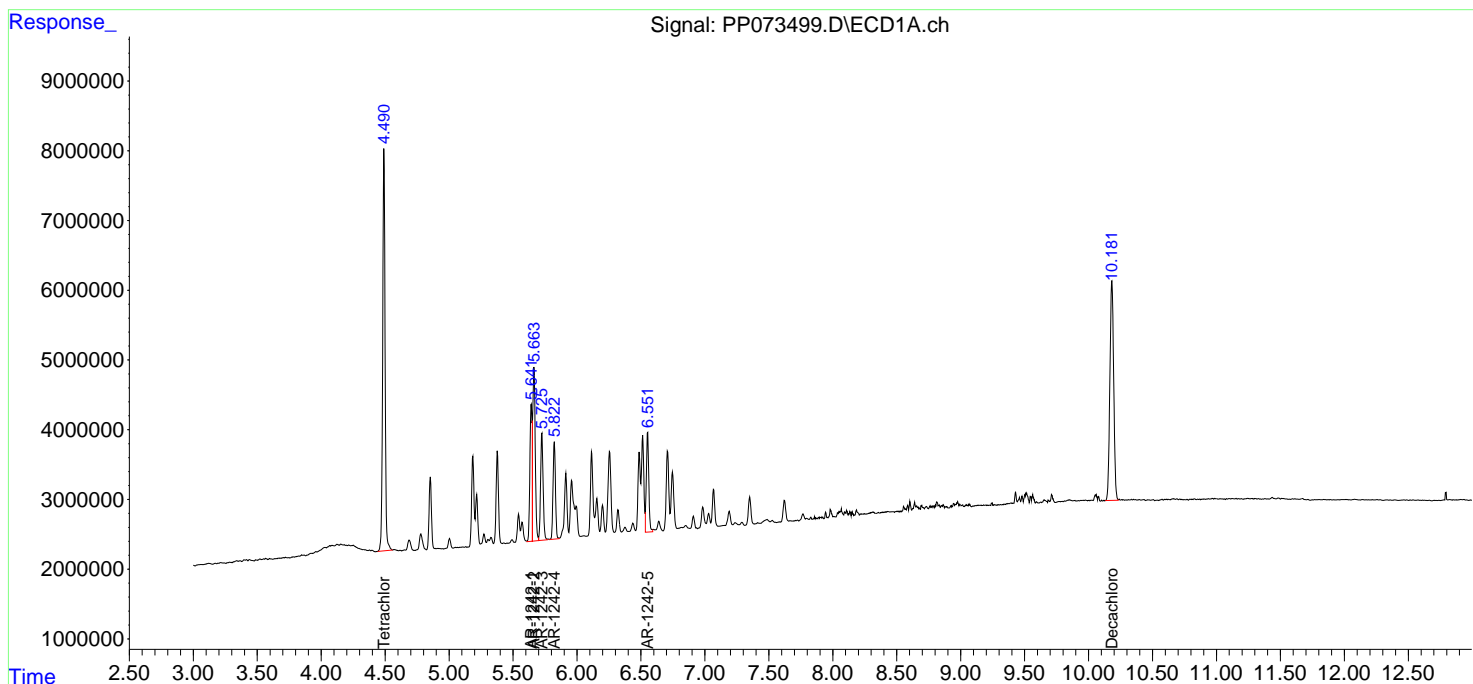
(f)=RT Delta > 1/2 Window (#)=Amounts differ by > 25% (m)=manual int.

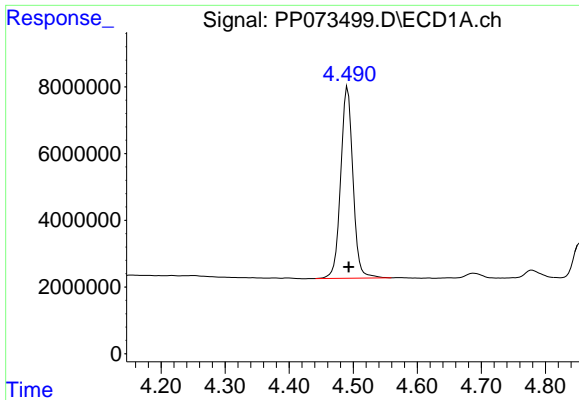
Data Path : Z:\pestpcbsrv\HPCHEM1\ECD_P\Data\PP070325\
Data File : PP073499.D
Signal(s) : Signal #1: ECD1A.ch Signal #2: ECD2B.ch
Acq On : 03 Jul 2025 14:59
Operator : YP\AJ
Sample : AR1242CCC500
Misc :
ALS Vial : 4 Sample Multiplier: 1

Instrument :
ECD_P
ClientSampleId :
AR1242CCC500

Integration File signal 1: autoint1.e
Integration File signal 2: autoint2.e
Quant Time: Jul 04 04:03:25 2025
Quant Method : Z:\pestpcbsrv\HPCHEM1\ECD_P\methods\PP070125.M
Quant Title : GC EXTRACTABLES
QLast Update : Wed Jul 02 04:02:48 2025
Response via : Initial Calibration
Integrator: ChemStation

Volume Inj. : 2 µl
Signal #1 Phase : ZB-MR1 Signal #2 Phase: ZB-MR2
Signal #1 Info : 30Mx0.32mmx 0.50µ Signal #2 Info : 30M x 0.32mm x 0.25µm

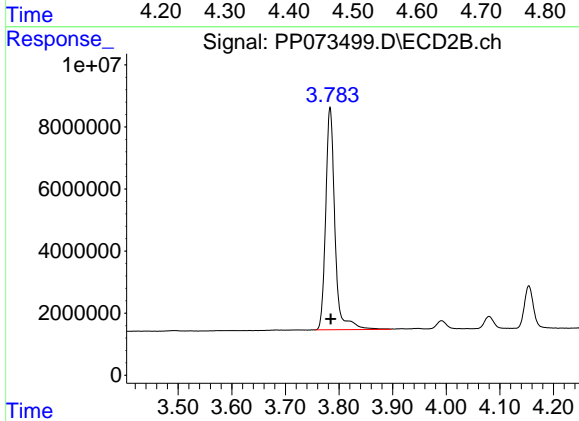




#1 Tetrachloro-m-xylene

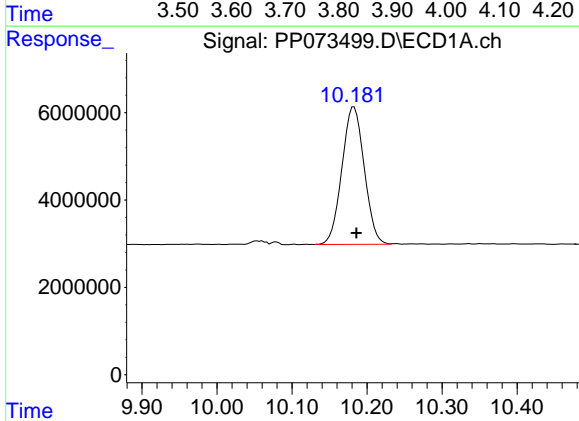
R.T.: 4.491 min
 Delta R.T.: -0.002 min
 Response: 76227937
 Conc: 47.75 ng/ml

Instrument :
 ECD_P
 ClientSampleId :
 AR1242CCC500



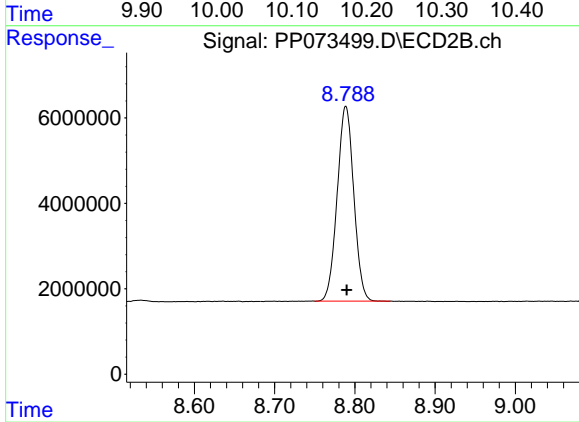
#1 Tetrachloro-m-xylene

R.T.: 3.783 min
 Delta R.T.: -0.001 min
 Response: 85880729
 Conc: 48.42 ng/ml



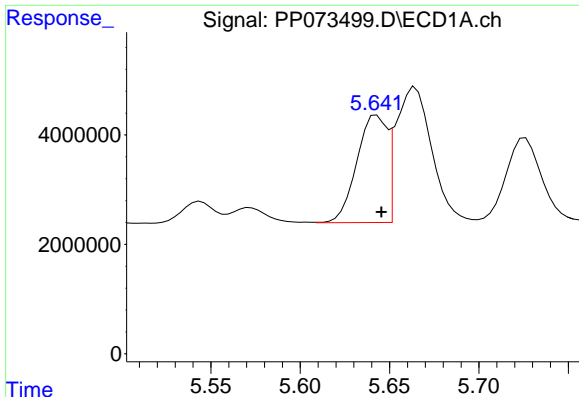
#2 Decachlorobiphenyl

R.T.: 10.183 min
 Delta R.T.: -0.003 min
 Response: 65020276
 Conc: 45.76 ng/ml



#2 Decachlorobiphenyl

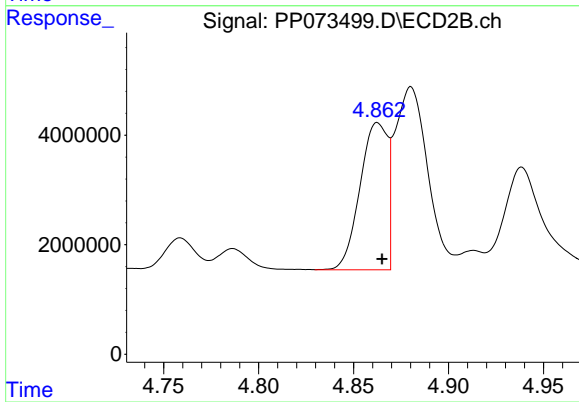
R.T.: 8.789 min
 Delta R.T.: -0.001 min
 Response: 65600248
 Conc: 47.41 ng/ml



#16 AR-1242-1

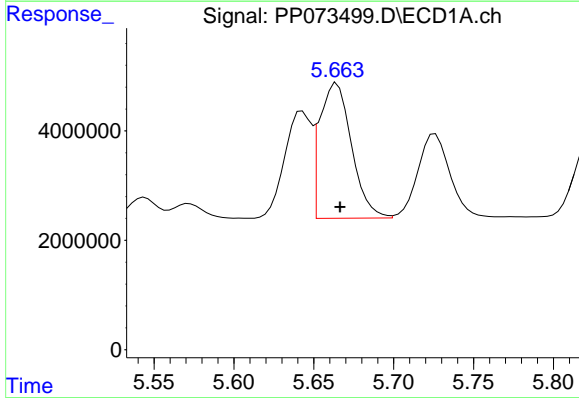
R.T.: 5.643 min
 Delta R.T.: -0.003 min
 Response: 23004378
 Conc: 452.75 ng/ml

Instrument :
 ECD_P
 ClientSampleId :
 AR1242CCC500



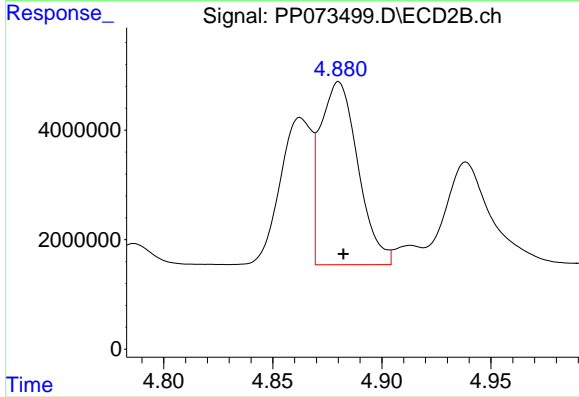
#16 AR-1242-1

R.T.: 4.863 min
 Delta R.T.: -0.002 min
 Response: 27005298
 Conc: 462.41 ng/ml



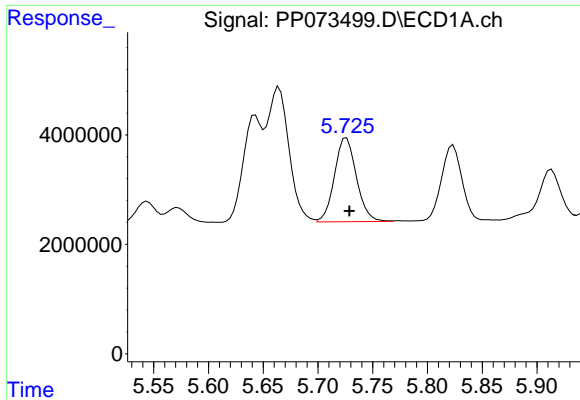
#17 AR-1242-2

R.T.: 5.664 min
 Delta R.T.: -0.002 min
 Response: 34393778
 Conc: 453.60 ng/ml



#17 AR-1242-2

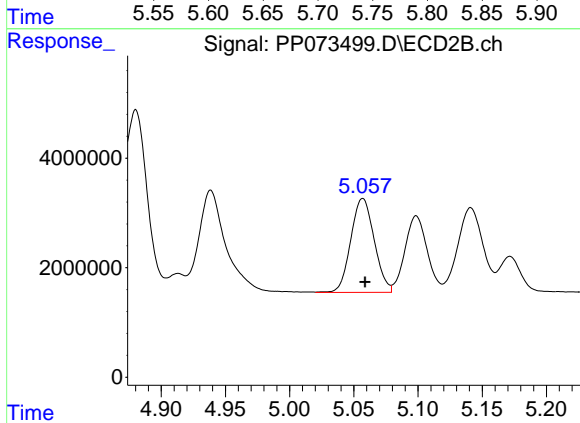
R.T.: 4.880 min
 Delta R.T.: -0.002 min
 Response: 40182670
 Conc: 465.74 ng/ml



#18 AR-1242-3

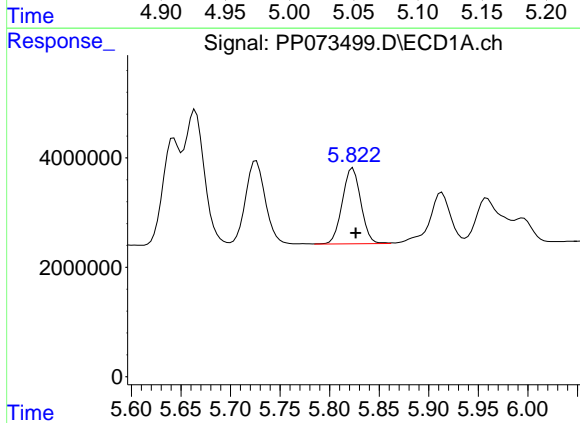
R.T.: 5.726 min
 Delta R.T.: -0.003 min
 Response: 21381210
 Conc: 445.10 ng/ml

Instrument :
 ECD_P
 ClientSampleId :
 AR1242CCC500



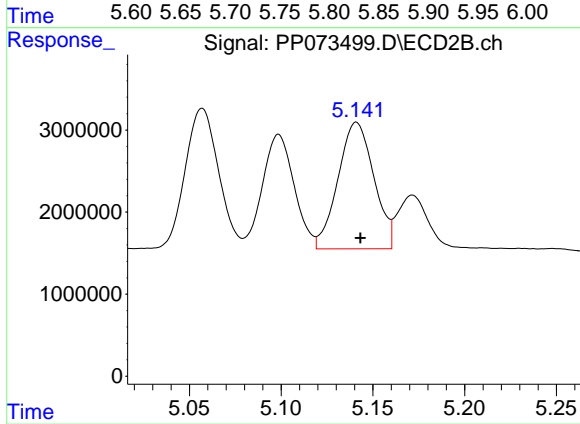
#18 AR-1242-3

R.T.: 5.057 min
 Delta R.T.: -0.002 min
 Response: 21785910
 Conc: 474.80 ng/ml



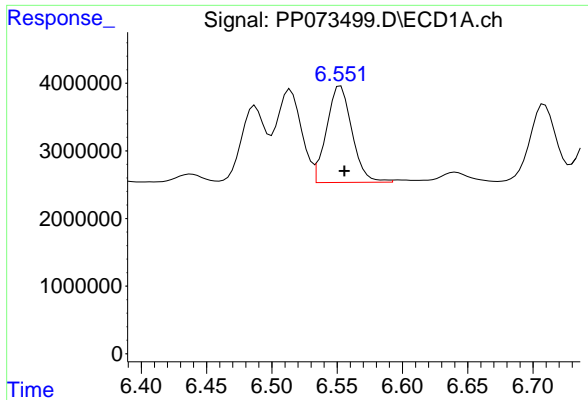
#19 AR-1242-4

R.T.: 5.824 min
 Delta R.T.: -0.003 min
 Response: 18004155
 Conc: 467.57 ng/ml



#19 AR-1242-4

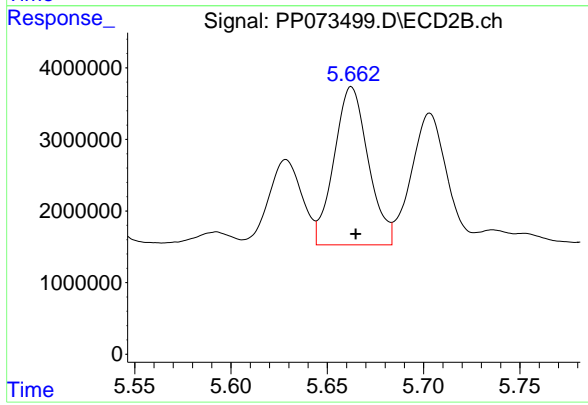
R.T.: 5.141 min
 Delta R.T.: -0.002 min
 Response: 21030166
 Conc: 478.94 ng/ml



#20 AR-1242-5

R.T.: 6.553 min
Delta R.T.: -0.003 min
Response: 19342317
Conc: 455.07 ng/ml

Instrument :
ECD_P
ClientSampleId :
AR1242CCC500



#20 AR-1242-5

R.T.: 5.663 min
Delta R.T.: -0.002 min
Response: 27266653
Conc: 498.32 ng/ml