

Data Path : Z:\pestpcbsrv\HPCHEM1\ECD\_P\Data\PP070524\  
 Data File : PP066189.D  
 Signal(s) : Signal #1: ECD1A.ch Signal #2: ECD2B.ch  
 Acq On : 05 Jul 2024 13:54  
 Operator : YP\AJ  
 Sample : PB161921BS  
 Misc :  
 ALS Vial : 10 Sample Multiplier: 1

Instrument :  
 ECD\_P  
 ClientSampleId :

Integration File signal 1: autoint1.e  
 Integration File signal 2: autoint2.e  
 Quant Time: Jul 05 14:22:44 2024  
 Quant Method : Z:\pestpcbsrv\HPCHEM1\ECD\_P\methods\PP070124.M  
 Quant Title : GC EXTRACTABLES  
 QLast Update : Tue Jul 02 06:34:47 2024  
 Response via : Initial Calibration  
 Integrator: ChemStation

Volume Inj. : 2 µl  
 Signal #1 Phase : ZB-MR1 Signal #2 Phase: ZB-MR2  
 Signal #1 Info : 30Mx0.32mmx 0.50µ Signal #2 Info : 30M x 0.32mm x 0.25µm

Compound	RT#1	RT#2	Resp#1	Resp#2	ng/ml	ng/ml
-----						
System Monitoring Compounds						
1) SA Tetrachlo...	4.783	4.023	38575821	44768227	21.914	19.350
2) SA Decachlor...	10.782	9.197	42774015	27578222	23.661	24.243
Target Compounds						
3) L1 AR-1016-1	5.963	5.136	32194079	27639034	481.706	408.847
4) L1 AR-1016-2	5.987	5.156	46949339	40247795	475.464	413.062
5) L1 AR-1016-3	6.050	5.338	30700869	21378865	507.223	423.032
6) L1 AR-1016-4	6.149	5.377	23987018	21091408	480.387	526.200
7) L1 AR-1016-5	6.445	5.596	23817541	23543158	484.078	476.712
8) L2 AR-1221-1	4.986	4.238	2934472	3019554	120.910	105.226
9) L2 AR-1221-2	5.079	4.329	4702986	4953640	257.047	225.863
10) L2 AR-1221-3	5.156	4.407	16994511	17432188	309.725	268.010
11) L3 AR-1232-1	5.156	4.407	16994511	17432188	398.705	337.882
12) L3 AR-1232-2	5.693	5.156	24397402	40247795	976.380	891.202
13) L3 AR-1232-3	5.987	5.338	46949339	21378865	1023.569	834.394
14) L3 AR-1232-4	6.149	5.420	23987018	21215227	885.712	986.773
15) L3 AR-1232-5	6.237	5.596	22765924	23543158	1203.418	1023.512
16) L4 AR-1242-1	5.963	5.136	32194079	27639034	594.270	500.800
17) L4 AR-1242-2	5.987	5.156	46949339	40247795	583.074	527.475
18) L4 AR-1242-3	6.050	5.338	30700869	21378865	631.373	499.880
19) L4 AR-1242-4	6.149	5.420	23987018	21215227	577.465	527.185
20) L4 AR-1242-5	6.891	5.954	4519442	15545470	91.811	363.957 #
21) L5 AR-1248-1	5.963	5.136	32194079	27639034	768.725	656.531
22) L5 AR-1248-2	6.237	5.377	22765924	21091408	357.030	371.012
23) L5 AR-1248-3	6.445	5.420	23817541	21215227	354.731	362.879
24) L5 AR-1248-4	6.824f	5.596	23004111	23543158	305.131	353.441
25) L5 AR-1248-5	6.891	5.995	4519442	2196825	57.835	37.282 #
26) L6 AR-1254-1	6.824	5.954	23004111	15545470	290.868	177.114 #
27) L6 AR-1254-2	7.042	6.100	22868206	14252739	189.679	188.452
28) L6 AR-1254-3	7.412	6.525f	10890666	29773337	91.637	262.500 #
29) L6 AR-1254-4	7.699	6.741	7114082	2239654	81.162	35.742 #
30) L6 AR-1254-5	8.119	7.162	60002300	42777964	625.715	461.747 #
31) L7 AR-1260-1	7.577	6.643	44646739	33604644	469.686	426.984
32) L7 AR-1260-2	7.831	6.829	56129288	38568262	518.845	421.529
33) L7 AR-1260-3	8.196	6.988	33815998	35946248	446.533	429.732
34) L7 AR-1260-4	8.439	7.463	39434907	26077176	448.503	428.627
35) L7 AR-1260-5	8.785	7.703	75278488	63051378	455.762	472.571
36) L8 AR-1262-1	8.258	7.254	24919052	18337583	464.391	434.363
37) L8 AR-1262-2	8.785	7.463	75278488	26077176	355.127	305.189
38) L8 AR-1262-3	9.143f	7.989	48749759	11827818	332.422	178.469 #
39) L8 AR-1262-4	9.224	8.054	18064723	44847688	150.757	371.488 #
40) L8 AR-1262-5	9.945	8.581	17745401	13039734	238.301	236.070
41) L9 AR-1268-1	9.143f	7.989	48749759	11827818	196.117	65.207 #

Data Path : Z:\pestpcbsrv\HPCHEM1\ECD\_P\Data\PP070524\  
 Data File : PP066189.D  
 Signal(s) : Signal #1: ECD1A.ch Signal #2: ECD2B.ch  
 Acq On : 05 Jul 2024 13:54  
 Operator : YP\AJ  
 Sample : PB161921BS  
 Misc :  
 ALS Vial : 10 Sample Multiplier: 1

Instrument :  
 ECD\_P  
 ClientSampleId :

Integration File signal 1: autoint1.e  
 Integration File signal 2: autoint2.e  
 Quant Time: Jul 05 14:22:44 2024  
 Quant Method : Z:\pestpcbsrv\HPCHEM1\ECD\_P\methods\PP070124.M  
 Quant Title : GC EXTRACTABLES  
 QLast Update : Tue Jul 02 06:34:47 2024  
 Response via : Initial Calibration  
 Integrator: ChemStation

Volume Inj. : 2 µl  
 Signal #1 Phase : ZB-MR1 Signal #2 Phase: ZB-MR2  
 Signal #1 Info : 30Mx0.32mmx 0.50µ Signal #2 Info : 30M x 0.32mm x 0.25µm

	Compound	RT#1	RT#2	Resp#1	Resp#2	ng/ml	ng/ml
42)	L9 AR-1268-2	9.224	8.054	18064723	44847688	75.308	262.876 #
43)	L9 AR-1268-3	9.482	8.270	1310926	1595342	6.539	11.041 #
44)	L9 AR-1268-4	9.945	8.581	17745401	13039734	232.300	213.089
45)	L9 AR-1268-5	10.405	8.907	8078327	4518368	12.493	10.609

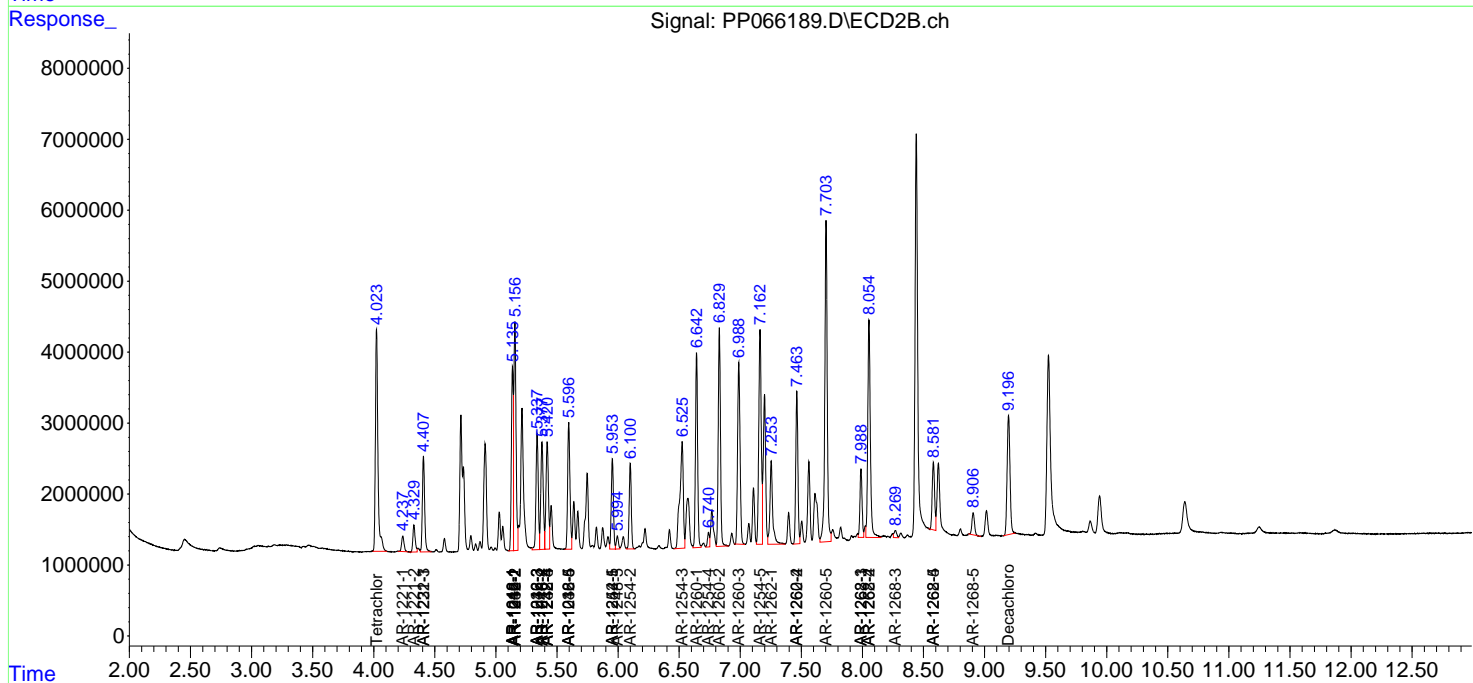
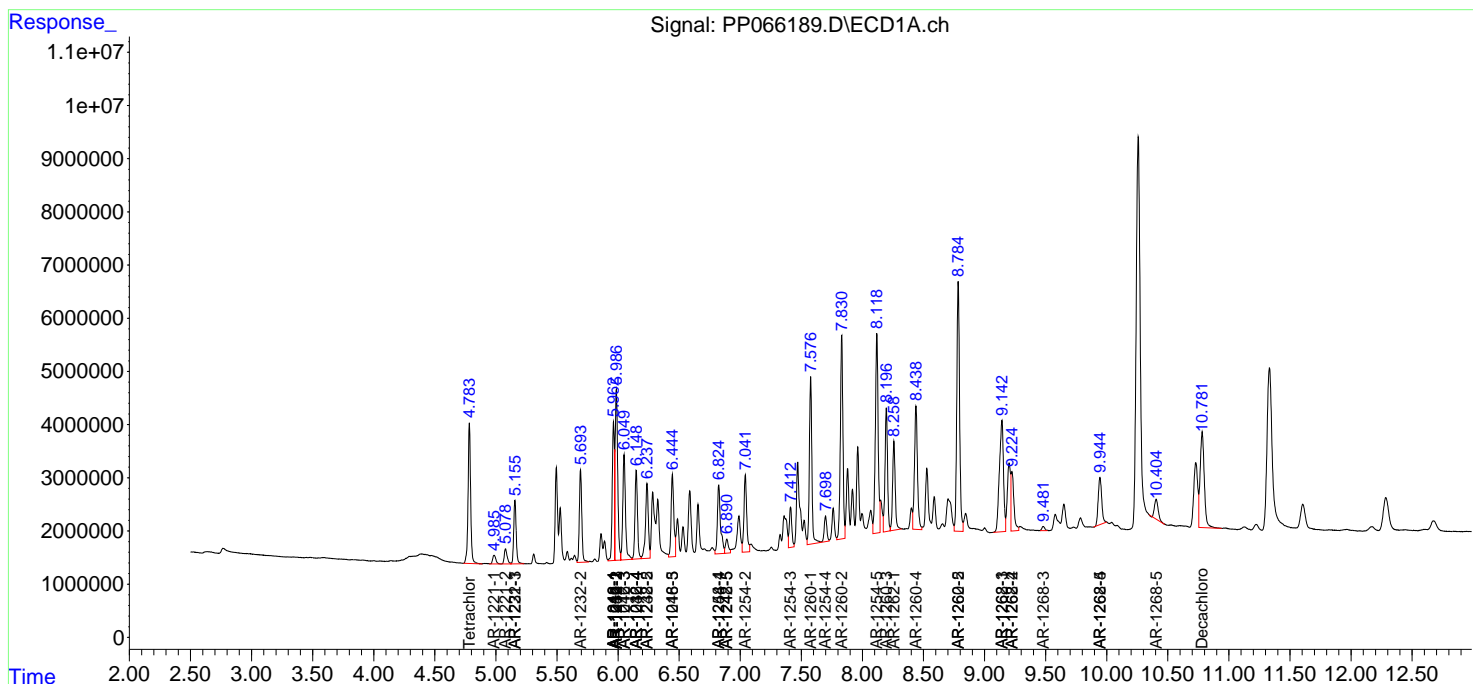
(f)=RT Delta > 1/2 Window (#)=Amounts differ by > 25% (m)=manual int.

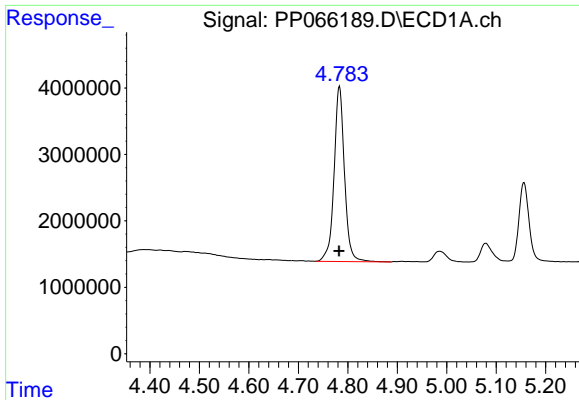
Data Path : Z:\pestpcbsrv\HPCHEM1\ECD\_P\Data\PP070524\  
 Data File : PP066189.D  
 Signal(s) : Signal #1: ECD1A.ch Signal #2: ECD2B.ch  
 Acq On : 05 Jul 2024 13:54  
 Operator : YP\AJ  
 Sample : PB161921BS  
 Misc :  
 ALS Vial : 10 Sample Multiplier: 1

Instrument :  
 ECD\_P  
 ClientSampleId :

Integration File signal 1: autoint1.e  
 Integration File signal 2: autoint2.e  
 Quant Time: Jul 05 14:22:44 2024  
 Quant Method : Z:\pestpcbsrv\HPCHEM1\ECD\_P\methods\PP070124.M  
 Quant Title : GC EXTRACTABLES  
 QLast Update : Tue Jul 02 06:34:47 2024  
 Response via : Initial Calibration  
 Integrator: ChemStation

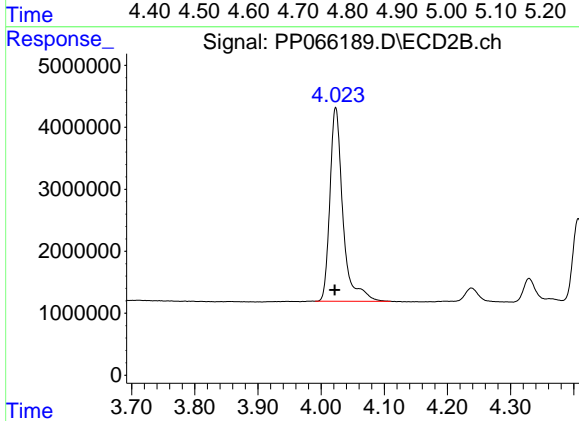
Volume Inj. : 2 µl  
 Signal #1 Phase : ZB-MR1 Signal #2 Phase: ZB-MR2  
 Signal #1 Info : 30Mx0.32mmx 0.50µ Signal #2 Info : 30M x 0.32mm x 0.25µm



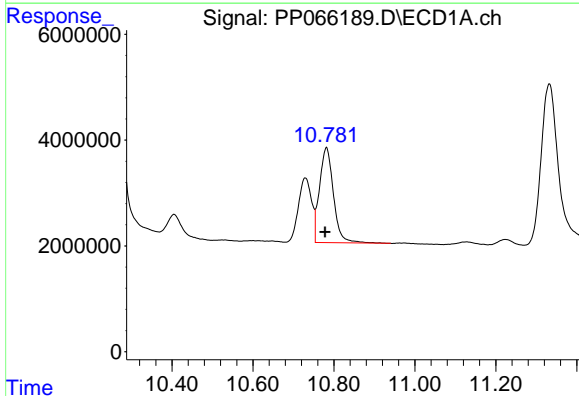


#1 Tetrachloro-m-xylene  
R.T.: 4.783 min  
Delta R.T.: 0.001 min  
Response: 38575821  
Conc: 21.91 ng/ml

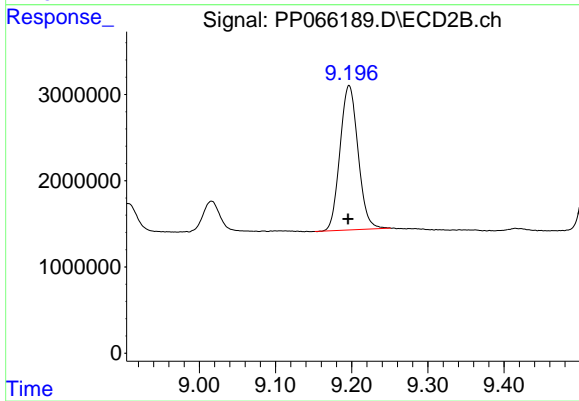
Instrument :  
ECD\_P  
ClientSampleId :



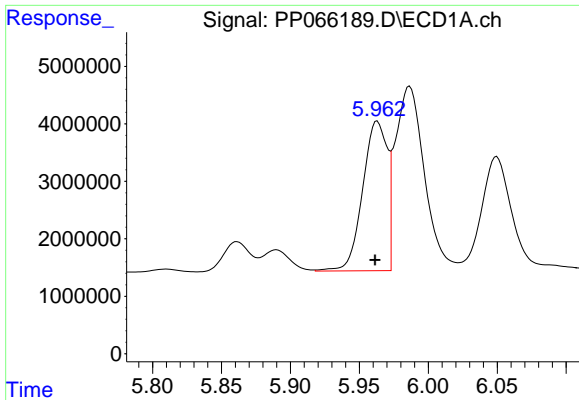
#1 Tetrachloro-m-xylene  
R.T.: 4.023 min  
Delta R.T.: 0.001 min  
Response: 44768227  
Conc: 19.35 ng/ml



#2 Decachlorobiphenyl  
R.T.: 10.782 min  
Delta R.T.: 0.003 min  
Response: 42774015  
Conc: 23.66 ng/ml



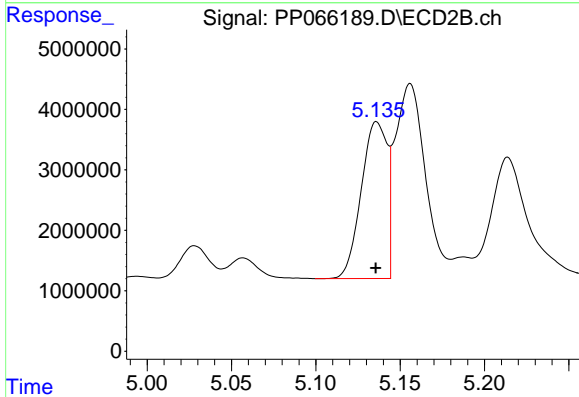
#2 Decachlorobiphenyl  
R.T.: 9.197 min  
Delta R.T.: 0.001 min  
Response: 27578222  
Conc: 24.24 ng/ml



#3 AR-1016-1

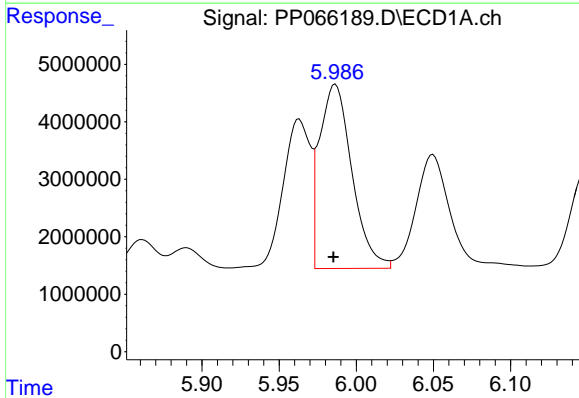
R.T.: 5.963 min  
 Delta R.T.: 0.002 min  
 Response: 32194079  
 Conc: 481.71 ng/ml

Instrument :  
 ECD\_P  
 ClientSampleId :



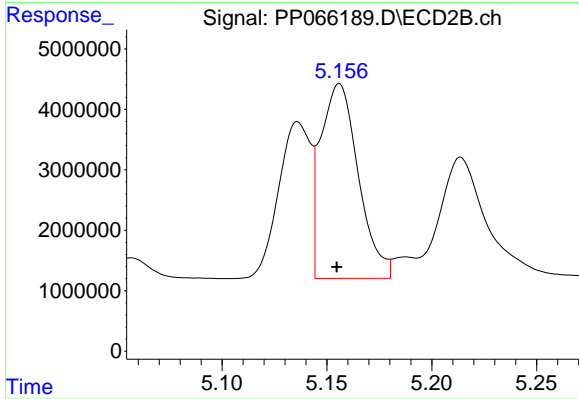
#3 AR-1016-1

R.T.: 5.136 min  
 Delta R.T.: 0.000 min  
 Response: 27639034  
 Conc: 408.85 ng/ml



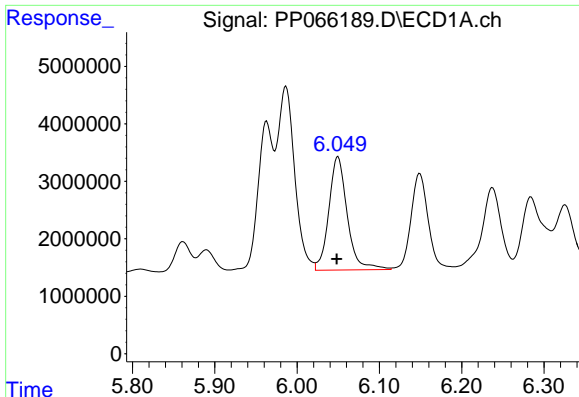
#4 AR-1016-2

R.T.: 5.987 min  
 Delta R.T.: 0.001 min  
 Response: 46949339  
 Conc: 475.46 ng/ml



#4 AR-1016-2

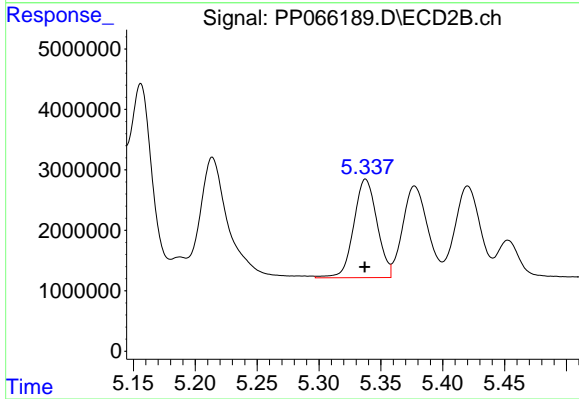
R.T.: 5.156 min  
 Delta R.T.: 0.001 min  
 Response: 40247795  
 Conc: 413.06 ng/ml



#5 AR-1016-3

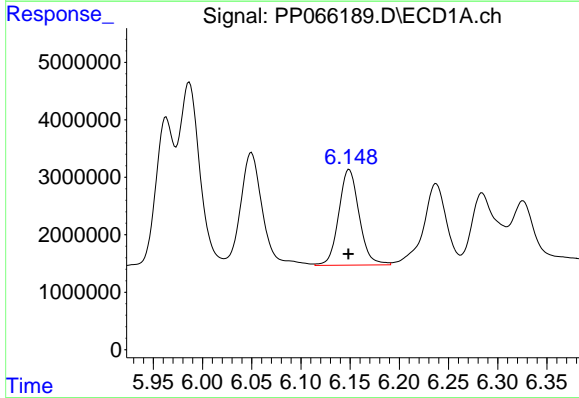
R.T.: 6.050 min  
 Delta R.T.: 0.002 min  
 Response: 30700869  
 Conc: 507.22 ng/ml

Instrument :  
 ECD\_P  
 ClientSampleId :



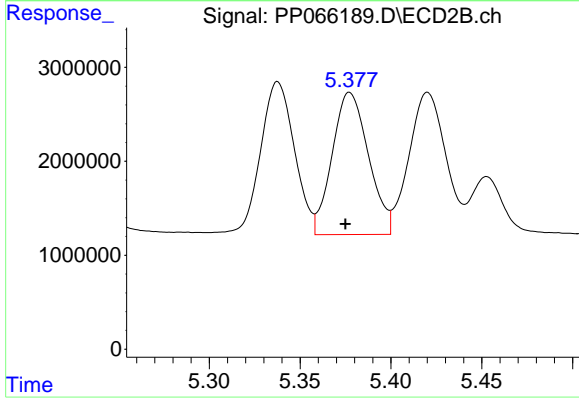
#5 AR-1016-3

R.T.: 5.338 min  
 Delta R.T.: 0.000 min  
 Response: 21378865  
 Conc: 423.03 ng/ml



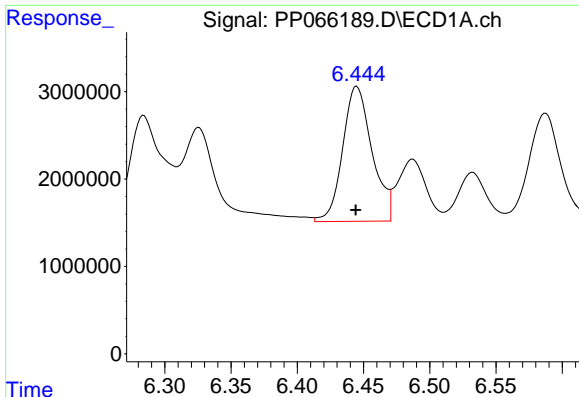
#6 AR-1016-4

R.T.: 6.149 min  
 Delta R.T.: 0.000 min  
 Response: 23987018  
 Conc: 480.39 ng/ml



#6 AR-1016-4

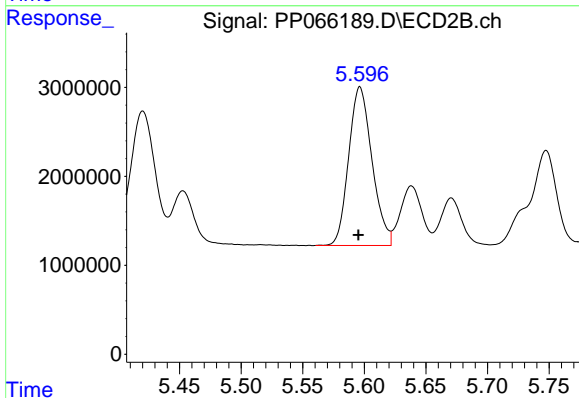
R.T.: 5.377 min  
 Delta R.T.: 0.002 min  
 Response: 21091408  
 Conc: 526.20 ng/ml



#7 AR-1016-5

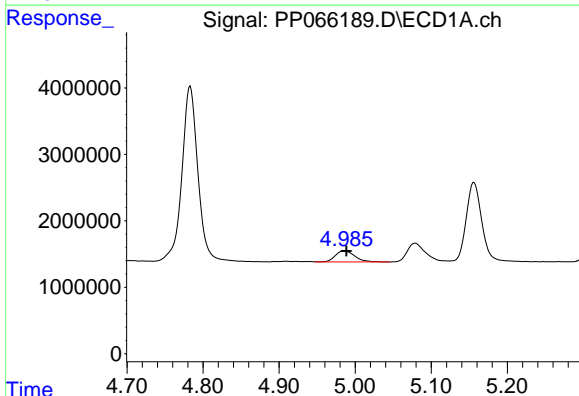
R.T.: 6.445 min  
 Delta R.T.: 0.000 min  
 Response: 23817541  
 Conc: 484.08 ng/ml

Instrument :  
 ECD\_P  
 ClientSampleId :



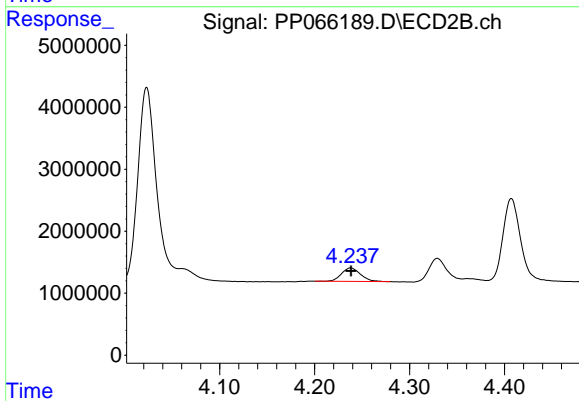
#7 AR-1016-5

R.T.: 5.596 min  
 Delta R.T.: 0.001 min  
 Response: 23543158  
 Conc: 476.71 ng/ml



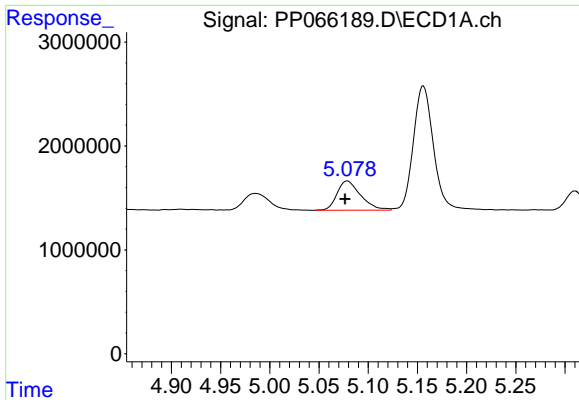
#8 AR-1221-1

R.T.: 4.986 min  
 Delta R.T.: -0.003 min  
 Response: 2934472  
 Conc: 120.91 ng/ml



#8 AR-1221-1

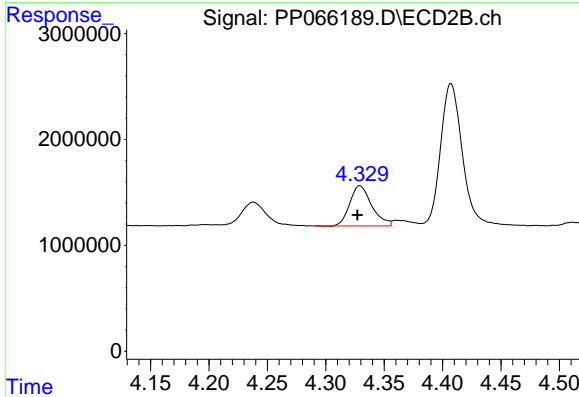
R.T.: 4.238 min  
 Delta R.T.: 0.000 min  
 Response: 3019554  
 Conc: 105.23 ng/ml



#9 AR-1221-2

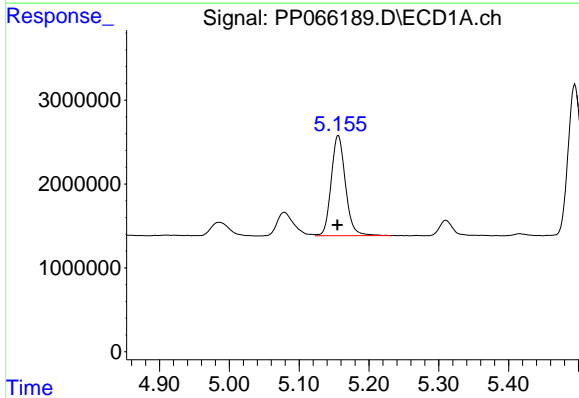
R.T.: 5.079 min  
 Delta R.T.: 0.003 min  
 Response: 4702986  
 Conc: 257.05 ng/ml

Instrument :  
 ECD\_P  
 ClientSampleId :



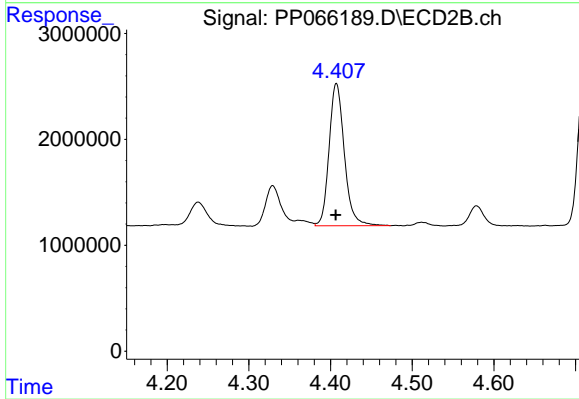
#9 AR-1221-2

R.T.: 4.329 min  
 Delta R.T.: 0.002 min  
 Response: 4953640  
 Conc: 225.86 ng/ml



#10 AR-1221-3

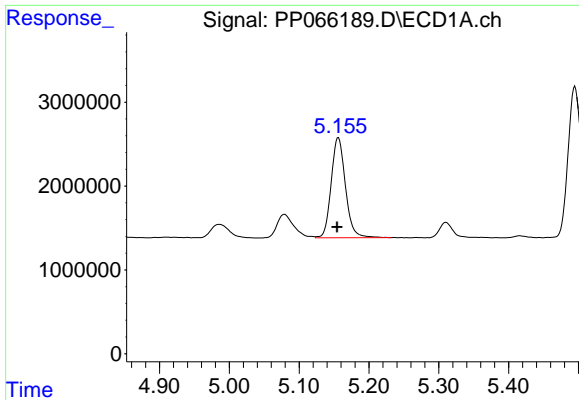
R.T.: 5.156 min  
 Delta R.T.: 0.001 min  
 Response: 16994511  
 Conc: 309.73 ng/ml



#10 AR-1221-3

R.T.: 4.407 min  
 Delta R.T.: 0.000 min  
 Response: 17432188  
 Conc: 268.01 ng/ml

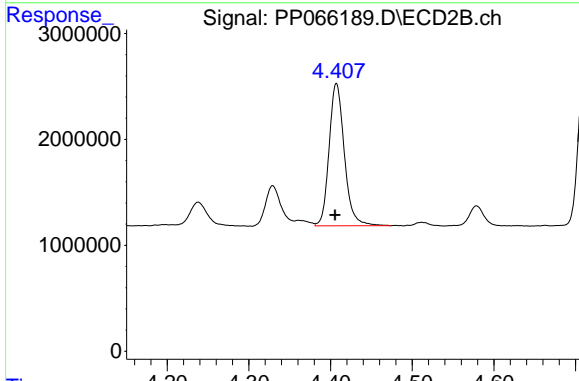




#11 AR-1232-1

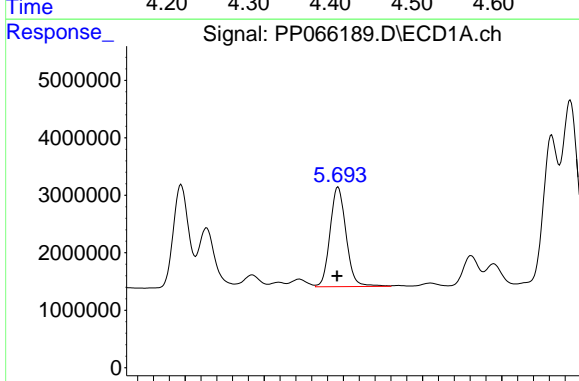
R.T.: 5.156 min  
 Delta R.T.: 0.002 min  
 Response: 16994511  
 Conc: 398.70 ng/ml

Instrument :  
 ECD\_P  
 ClientSampleId :



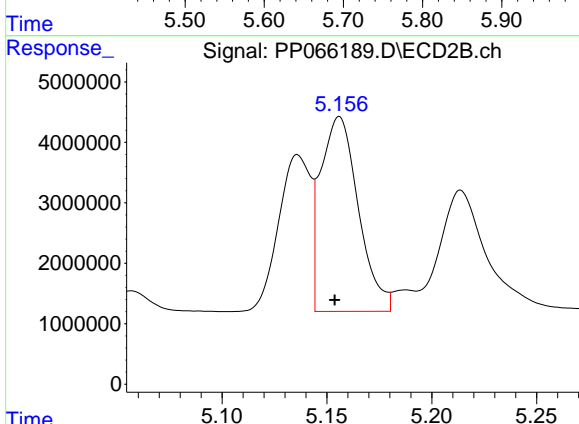
#11 AR-1232-1

R.T.: 4.407 min  
 Delta R.T.: 0.002 min  
 Response: 17432188  
 Conc: 337.88 ng/ml



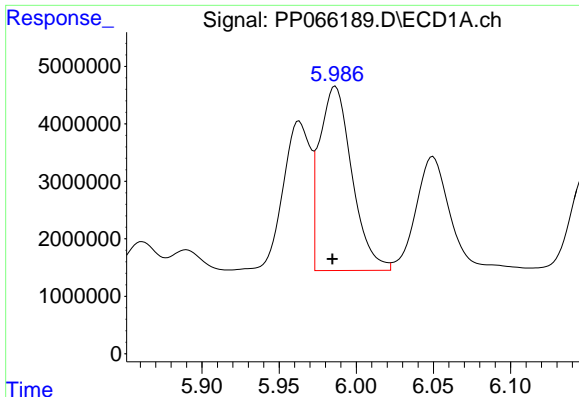
#12 AR-1232-2

R.T.: 5.693 min  
 Delta R.T.: 0.001 min  
 Response: 24397402  
 Conc: 976.38 ng/ml



#12 AR-1232-2

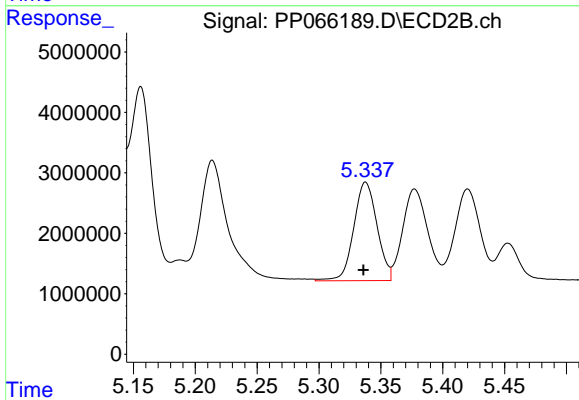
R.T.: 5.156 min  
 Delta R.T.: 0.002 min  
 Response: 40247795  
 Conc: 891.20 ng/ml



#13 AR-1232-3

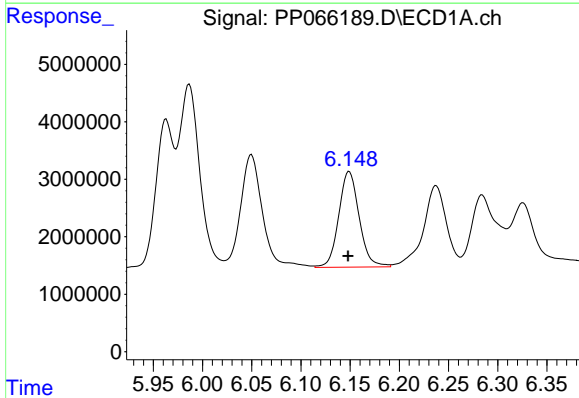
R.T.: 5.987 min  
Delta R.T.: 0.002 min  
Response: 46949339  
Conc: 1023.57 ng/ml

Instrument :  
ECD\_P  
ClientSampleId :



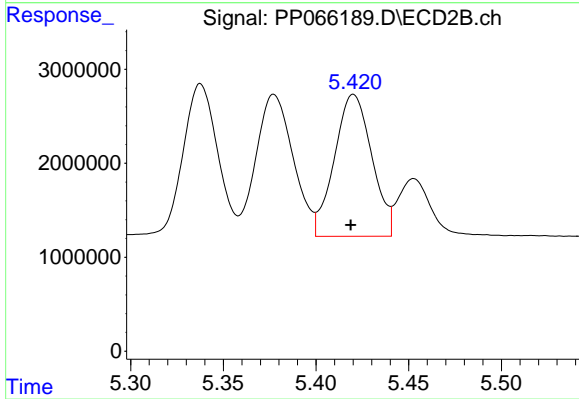
#13 AR-1232-3

R.T.: 5.338 min  
Delta R.T.: 0.002 min  
Response: 21378865  
Conc: 834.39 ng/ml



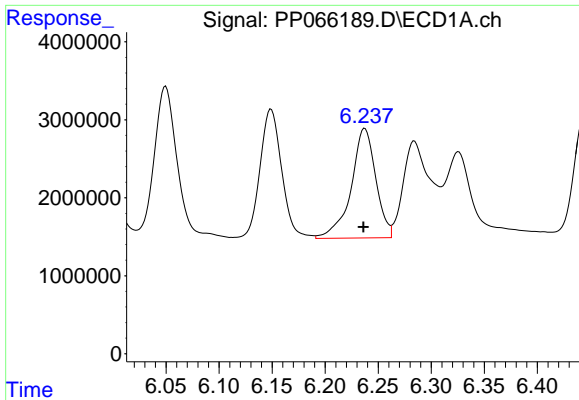
#14 AR-1232-4

R.T.: 6.149 min  
Delta R.T.: 0.001 min  
Response: 23987018  
Conc: 885.71 ng/ml



#14 AR-1232-4

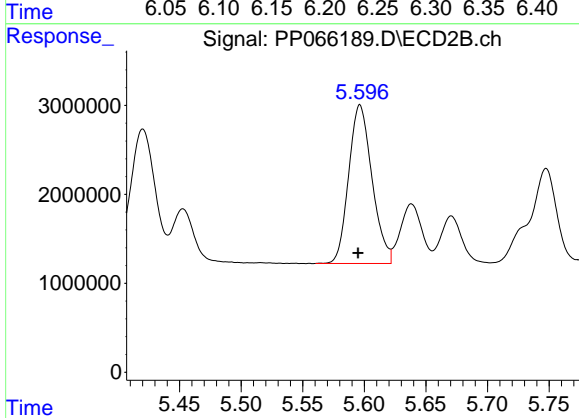
R.T.: 5.420 min  
Delta R.T.: 0.001 min  
Response: 21215227  
Conc: 986.77 ng/ml



#15 AR-1232-5

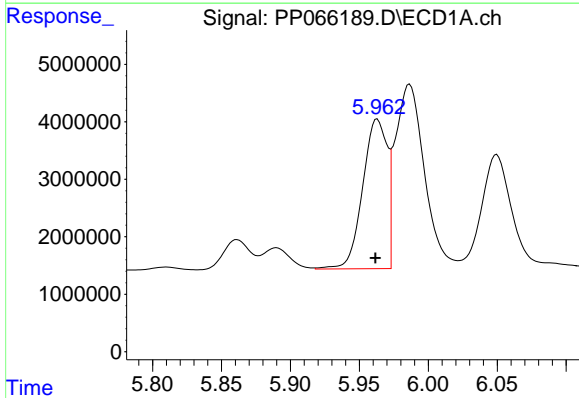
R.T.: 6.237 min  
 Delta R.T.: 0.001 min  
 Response: 22765924  
 Conc: 1203.42 ng/ml

Instrument :  
 ECD\_P  
 ClientSampleId :



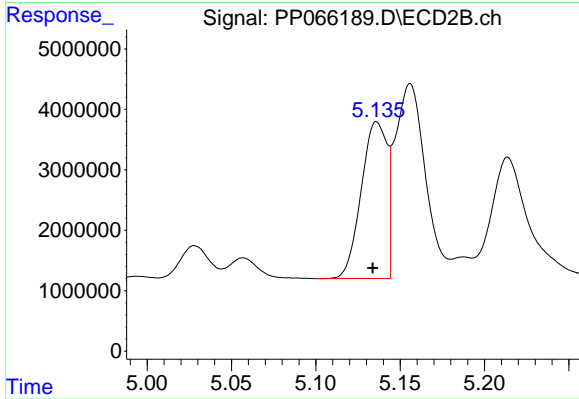
#15 AR-1232-5

R.T.: 5.596 min  
 Delta R.T.: 0.001 min  
 Response: 23543158  
 Conc: 1023.51 ng/ml



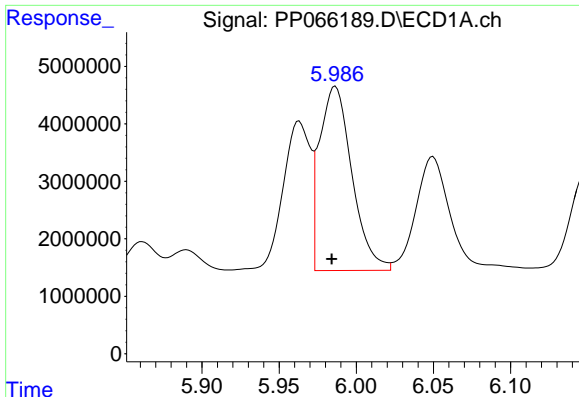
#16 AR-1242-1

R.T.: 5.963 min  
 Delta R.T.: 0.002 min  
 Response: 32194079  
 Conc: 594.27 ng/ml



#16 AR-1242-1

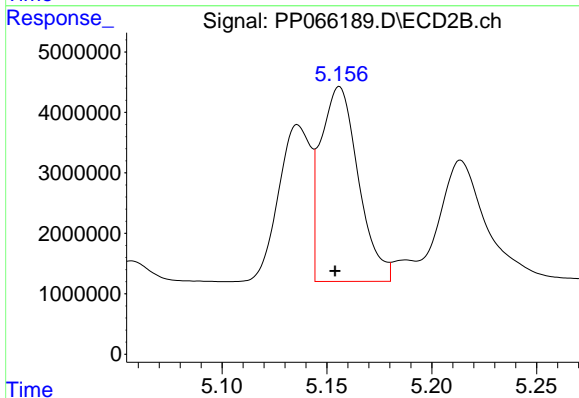
R.T.: 5.136 min  
 Delta R.T.: 0.002 min  
 Response: 27639034  
 Conc: 500.80 ng/ml



#17 AR-1242-2

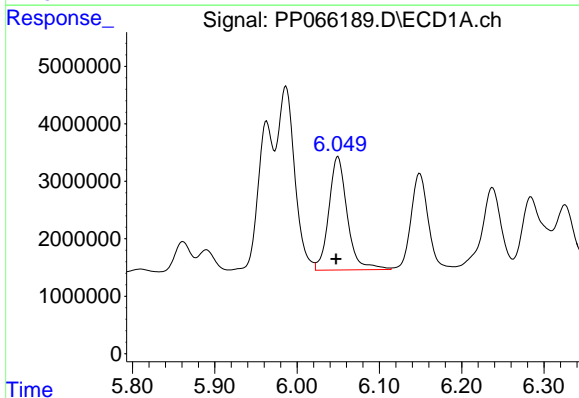
R.T.: 5.987 min  
 Delta R.T.: 0.002 min  
 Response: 46949339  
 Conc: 583.07 ng/ml

Instrument :  
 ECD\_P  
 ClientSampleId :



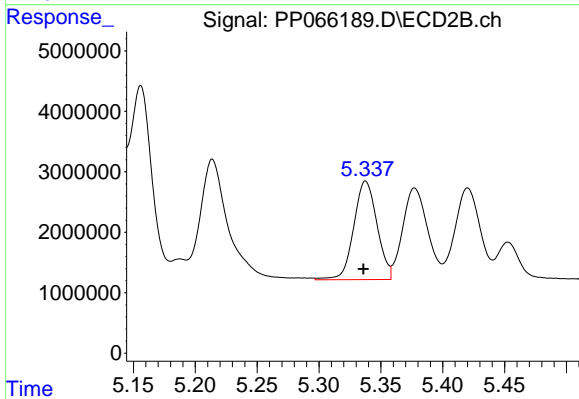
#17 AR-1242-2

R.T.: 5.156 min  
 Delta R.T.: 0.002 min  
 Response: 40247795  
 Conc: 527.47 ng/ml



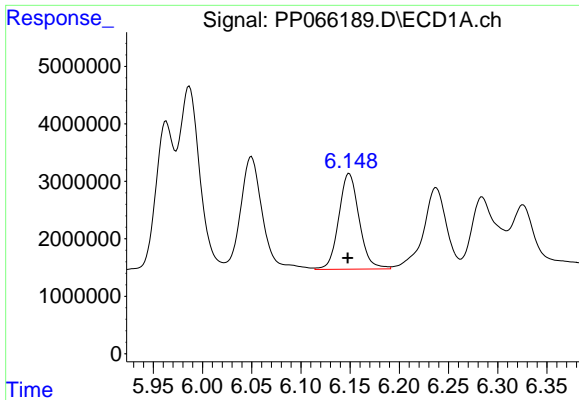
#18 AR-1242-3

R.T.: 6.050 min  
 Delta R.T.: 0.002 min  
 Response: 30700869  
 Conc: 631.37 ng/ml



#18 AR-1242-3

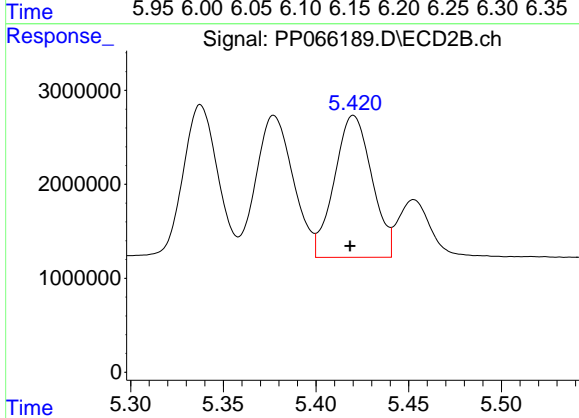
R.T.: 5.338 min  
 Delta R.T.: 0.002 min  
 Response: 21378865  
 Conc: 499.88 ng/ml



#19 AR-1242-4

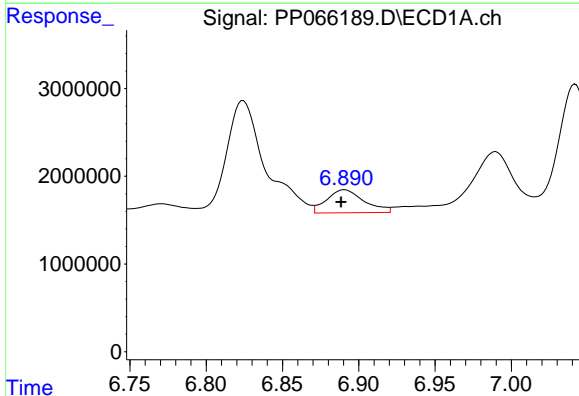
R.T.: 6.149 min  
 Delta R.T.: 0.002 min  
 Response: 23987018  
 Conc: 577.47 ng/ml

Instrument :  
 ECD\_P  
 ClientSampleId :



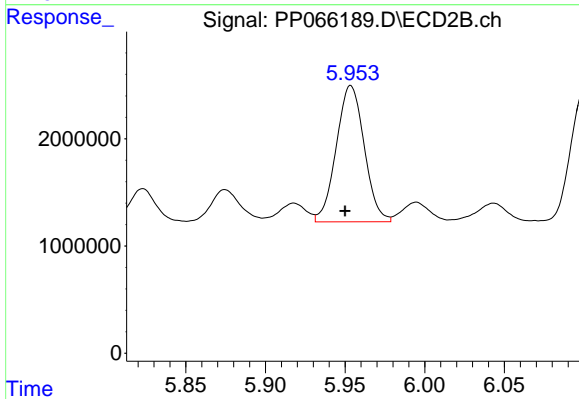
#19 AR-1242-4

R.T.: 5.420 min  
 Delta R.T.: 0.002 min  
 Response: 21215227  
 Conc: 527.19 ng/ml



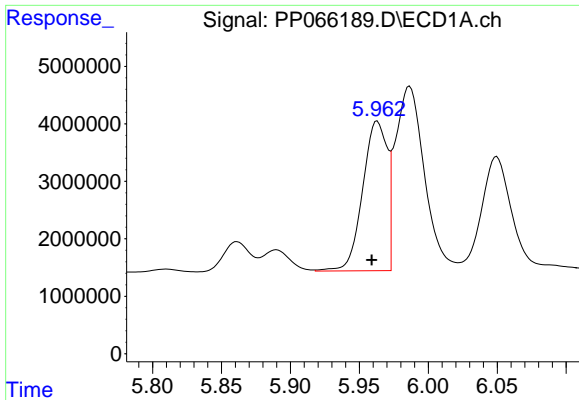
#20 AR-1242-5

R.T.: 6.891 min  
 Delta R.T.: 0.002 min  
 Response: 4519442  
 Conc: 91.81 ng/ml



#20 AR-1242-5

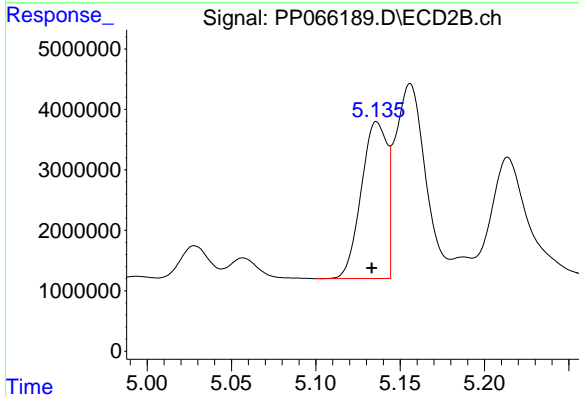
R.T.: 5.954 min  
 Delta R.T.: 0.003 min  
 Response: 15545470  
 Conc: 363.96 ng/ml



#21 AR-1248-1

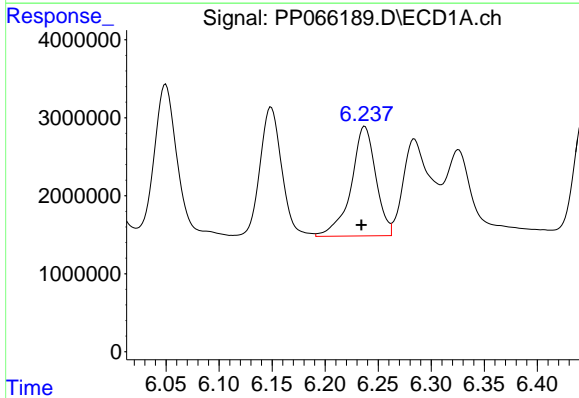
R.T.: 5.963 min  
 Delta R.T.: 0.004 min  
 Response: 32194079  
 Conc: 768.73 ng/ml

Instrument :  
 ECD\_P  
 ClientSampleId :



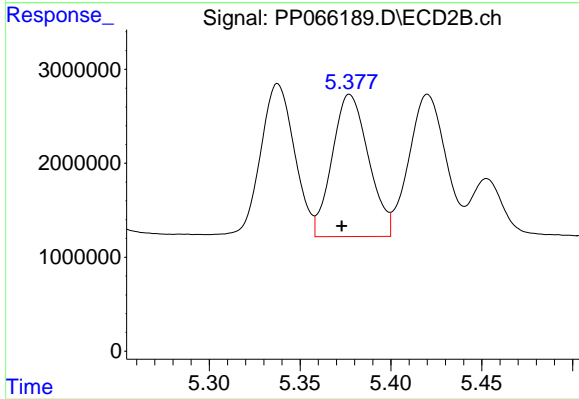
#21 AR-1248-1

R.T.: 5.136 min  
 Delta R.T.: 0.003 min  
 Response: 27639034  
 Conc: 656.53 ng/ml



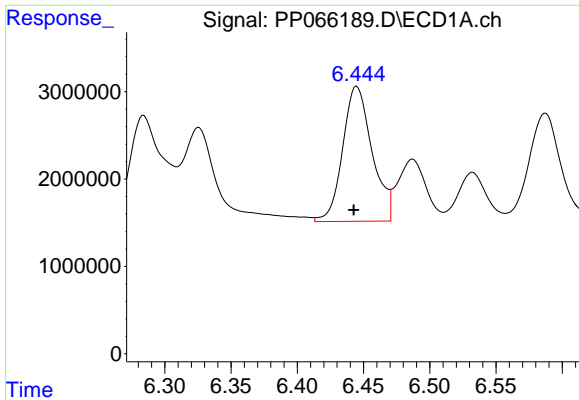
#22 AR-1248-2

R.T.: 6.237 min  
 Delta R.T.: 0.003 min  
 Response: 22765924  
 Conc: 357.03 ng/ml



#22 AR-1248-2

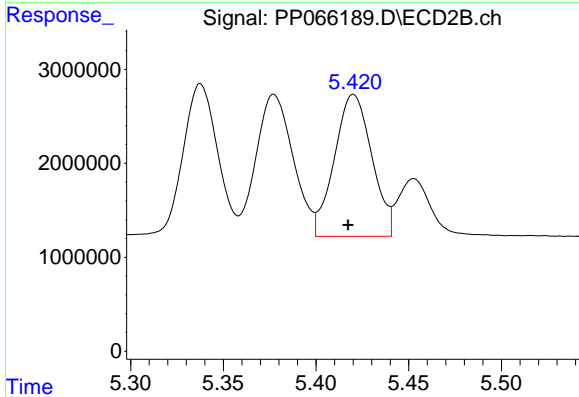
R.T.: 5.377 min  
 Delta R.T.: 0.004 min  
 Response: 21091408  
 Conc: 371.01 ng/ml



#23 AR-1248-3

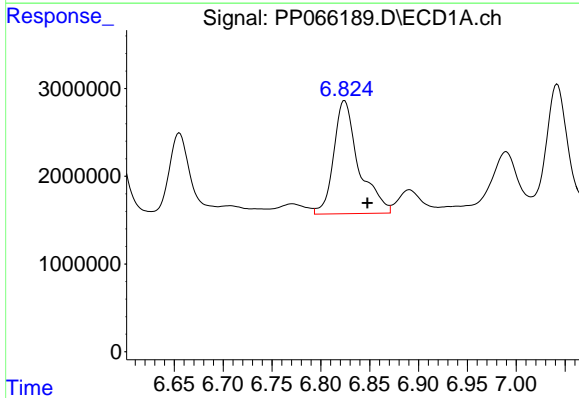
R.T.: 6.445 min  
 Delta R.T.: 0.002 min  
 Response: 23817541  
 Conc: 354.73 ng/ml

Instrument :  
 ECD\_P  
 ClientSampleId :



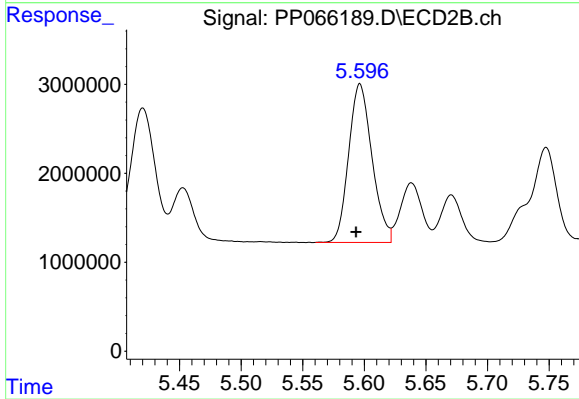
#23 AR-1248-3

R.T.: 5.420 min  
 Delta R.T.: 0.003 min  
 Response: 21215227  
 Conc: 362.88 ng/ml



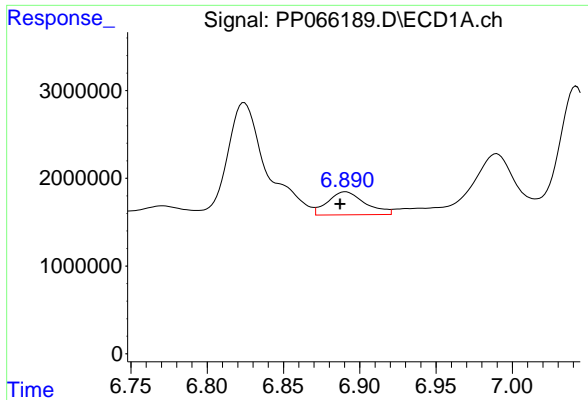
#24 AR-1248-4

R.T.: 6.824 min  
 Delta R.T.: -0.023 min  
 Response: 23004111  
 Conc: 305.13 ng/ml



#24 AR-1248-4

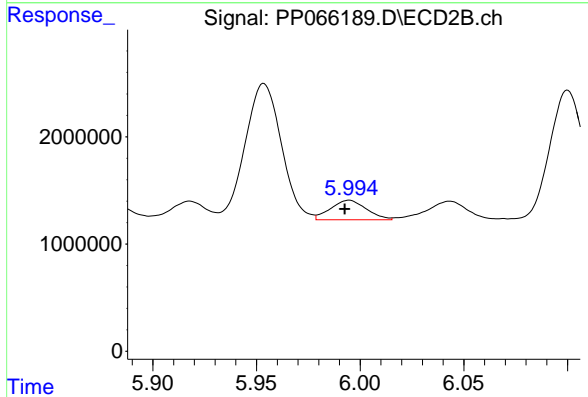
R.T.: 5.596 min  
 Delta R.T.: 0.003 min  
 Response: 23543158  
 Conc: 353.44 ng/ml



#25 AR-1248-5

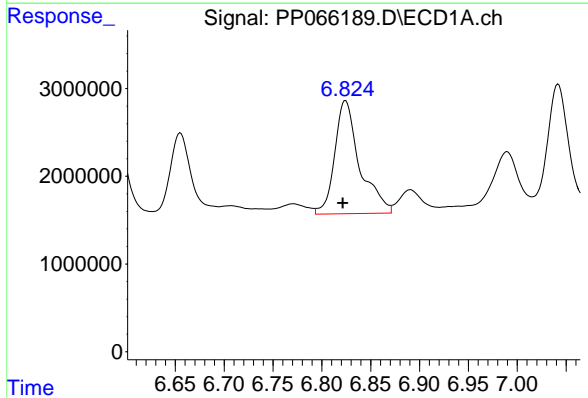
R.T.: 6.891 min  
 Delta R.T.: 0.004 min  
 Response: 4519442  
 Conc: 57.84 ng/ml

Instrument :  
 ECD\_P  
 ClientSampleId :



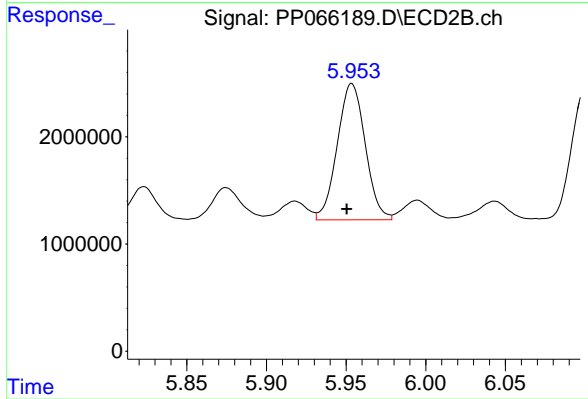
#25 AR-1248-5

R.T.: 5.995 min  
 Delta R.T.: 0.002 min  
 Response: 2196825  
 Conc: 37.28 ng/ml



#26 AR-1254-1

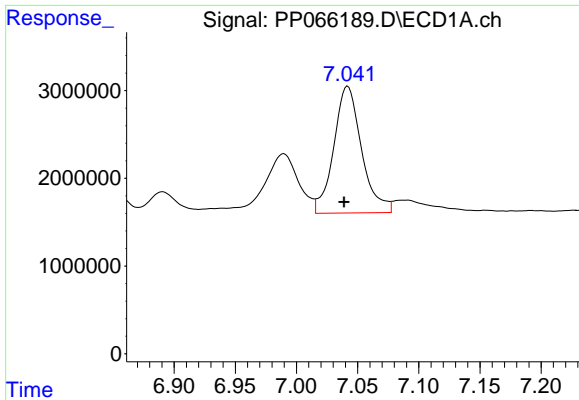
R.T.: 6.824 min  
 Delta R.T.: 0.003 min  
 Response: 23004111  
 Conc: 290.87 ng/ml



#26 AR-1254-1

R.T.: 5.954 min  
 Delta R.T.: 0.003 min  
 Response: 15545470  
 Conc: 177.11 ng/ml

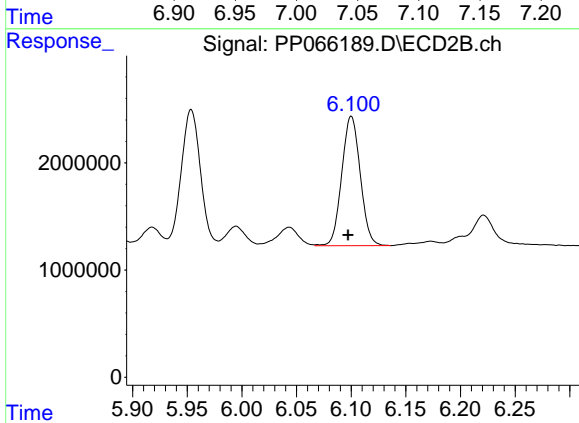




#27 AR-1254-2

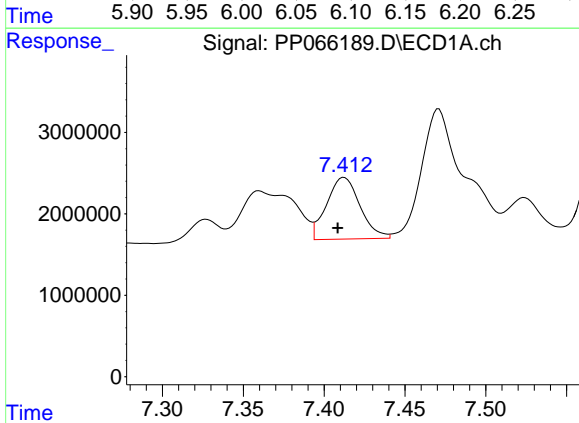
R.T.: 7.042 min  
 Delta R.T.: 0.003 min  
 Response: 22868206  
 Conc: 189.68 ng/ml

Instrument :  
 ECD\_P  
 ClientSampleId :



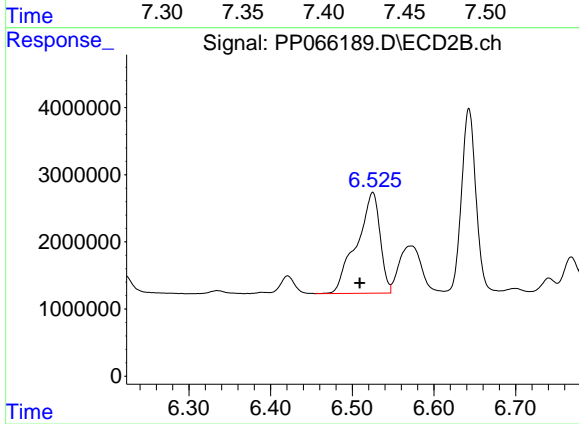
#27 AR-1254-2

R.T.: 6.100 min  
 Delta R.T.: 0.003 min  
 Response: 14252739  
 Conc: 188.45 ng/ml



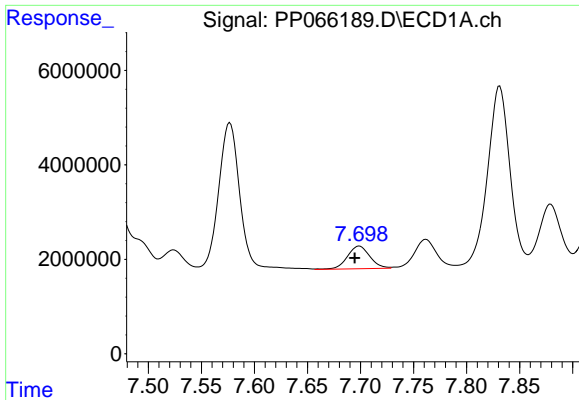
#28 AR-1254-3

R.T.: 7.412 min  
 Delta R.T.: 0.004 min  
 Response: 10890666  
 Conc: 91.64 ng/ml



#28 AR-1254-3

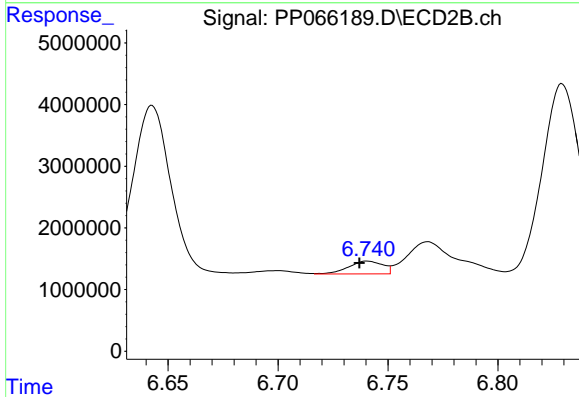
R.T.: 6.525 min  
 Delta R.T.: 0.016 min  
 Response: 29773337  
 Conc: 262.50 ng/ml



#29 AR-1254-4

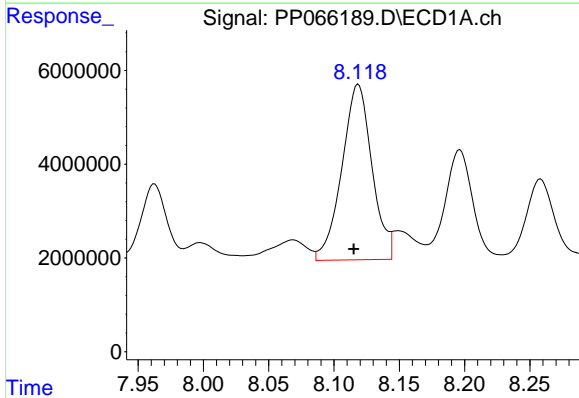
R.T.: 7.699 min  
 Delta R.T.: 0.004 min  
 Response: 7114082  
 Conc: 81.16 ng/ml

Instrument :  
 ECD\_P  
 ClientSampleId :



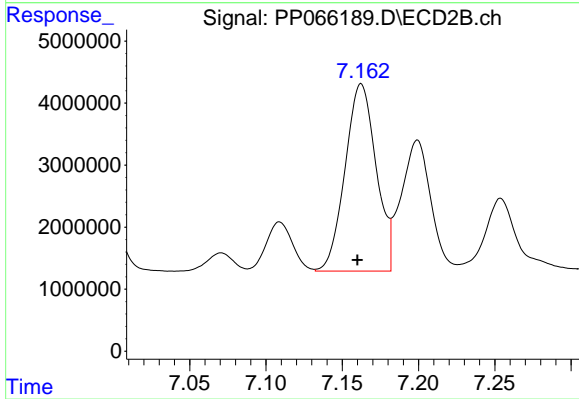
#29 AR-1254-4

R.T.: 6.741 min  
 Delta R.T.: 0.004 min  
 Response: 2239654  
 Conc: 35.74 ng/ml



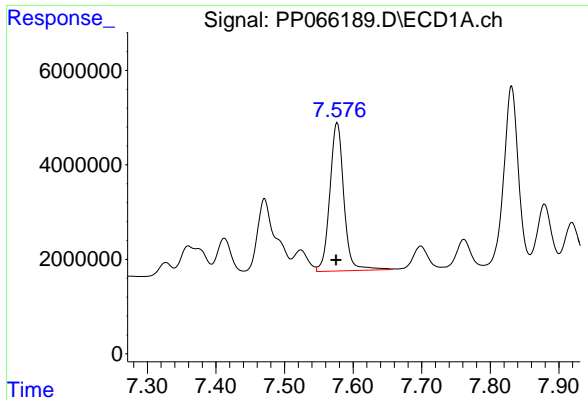
#30 AR-1254-5

R.T.: 8.119 min  
 Delta R.T.: 0.003 min  
 Response: 60002300  
 Conc: 625.71 ng/ml



#30 AR-1254-5

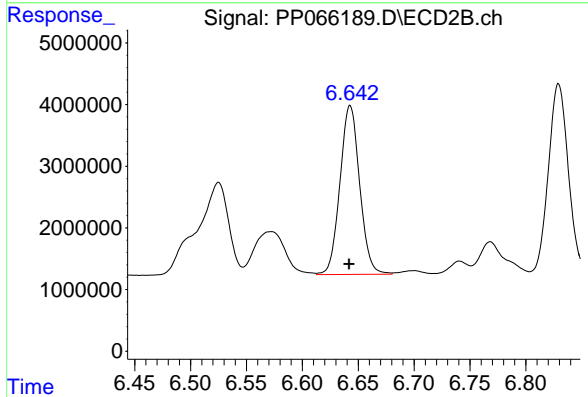
R.T.: 7.162 min  
 Delta R.T.: 0.002 min  
 Response: 42777964  
 Conc: 461.75 ng/ml



#31 AR-1260-1

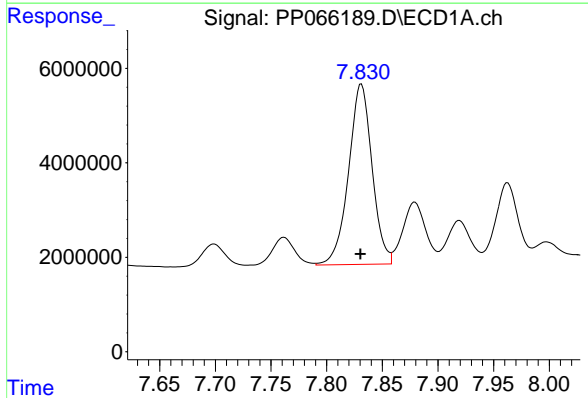
R.T.: 7.577 min  
 Delta R.T.: 0.002 min  
 Response: 44646739  
 Conc: 469.69 ng/ml

Instrument :  
 ECD\_P  
 ClientSampleId :



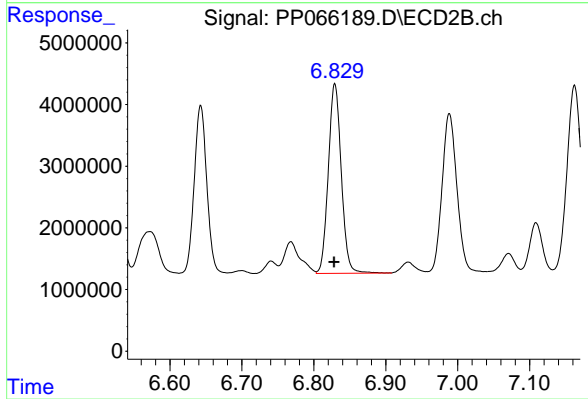
#31 AR-1260-1

R.T.: 6.643 min  
 Delta R.T.: 0.001 min  
 Response: 33604644  
 Conc: 426.98 ng/ml



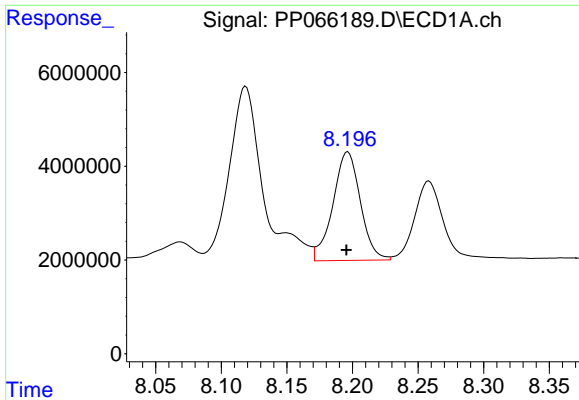
#32 AR-1260-2

R.T.: 7.831 min  
 Delta R.T.: 0.000 min  
 Response: 56129288  
 Conc: 518.84 ng/ml



#32 AR-1260-2

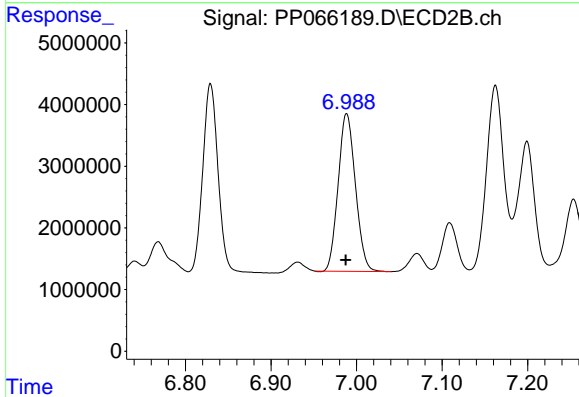
R.T.: 6.829 min  
 Delta R.T.: 0.001 min  
 Response: 38568262  
 Conc: 421.53 ng/ml



#33 AR-1260-3

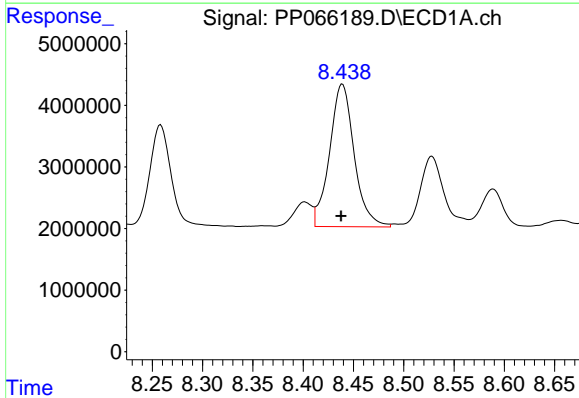
R.T.: 8.196 min  
 Delta R.T.: 0.001 min  
 Response: 33815998  
 Conc: 446.53 ng/ml

Instrument :  
 ECD\_P  
 ClientSampleId :



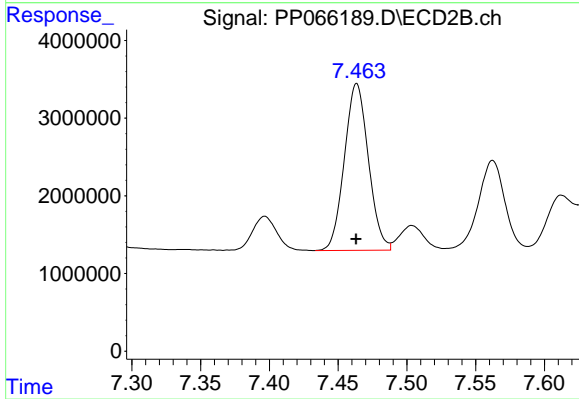
#33 AR-1260-3

R.T.: 6.988 min  
 Delta R.T.: 0.001 min  
 Response: 35946248  
 Conc: 429.73 ng/ml



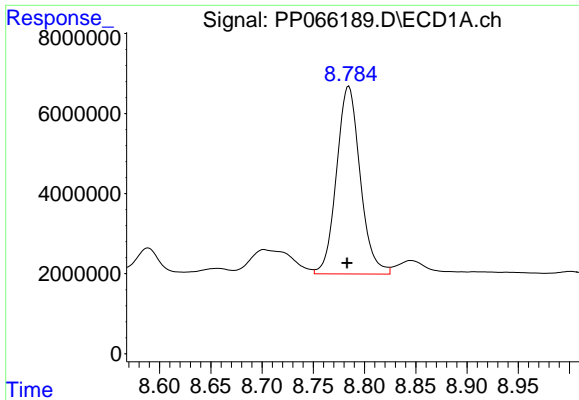
#34 AR-1260-4

R.T.: 8.439 min  
 Delta R.T.: 0.001 min  
 Response: 39434907  
 Conc: 448.50 ng/ml



#34 AR-1260-4

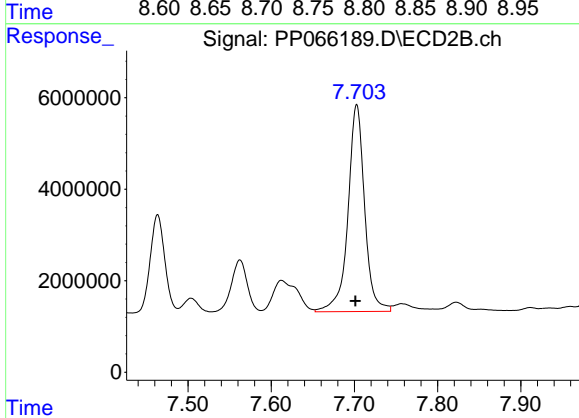
R.T.: 7.463 min  
 Delta R.T.: 0.000 min  
 Response: 26077176  
 Conc: 428.63 ng/ml



#35 AR-1260-5

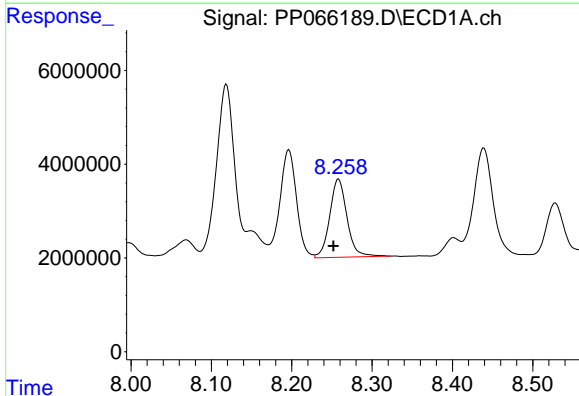
R.T.: 8.785 min  
Delta R.T.: 0.002 min  
Response: 75278488  
Conc: 455.76 ng/ml

Instrument :  
ECD\_P  
ClientSampleId :



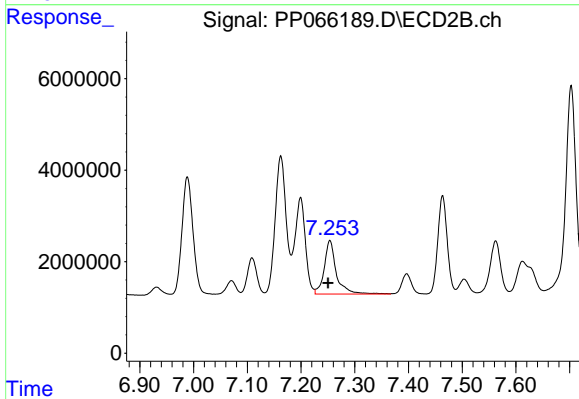
#35 AR-1260-5

R.T.: 7.703 min  
Delta R.T.: 0.002 min  
Response: 63051378  
Conc: 472.57 ng/ml



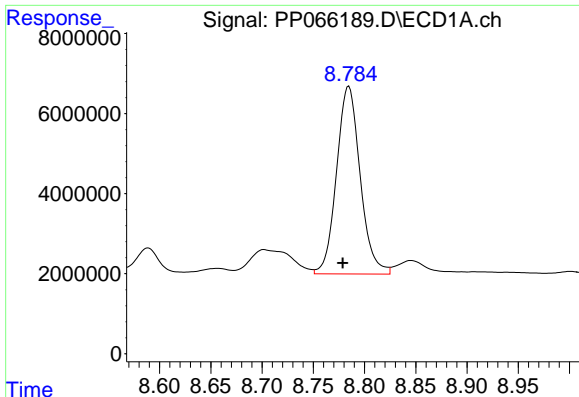
#36 AR-1262-1

R.T.: 8.258 min  
Delta R.T.: 0.006 min  
Response: 24919052  
Conc: 464.39 ng/ml



#36 AR-1262-1

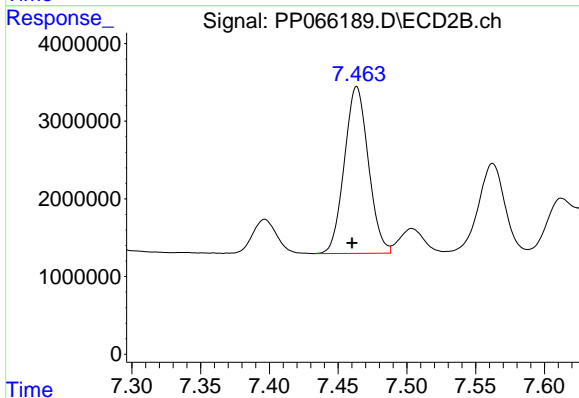
R.T.: 7.254 min  
Delta R.T.: 0.003 min  
Response: 18337583  
Conc: 434.36 ng/ml



#37 AR-1262-2

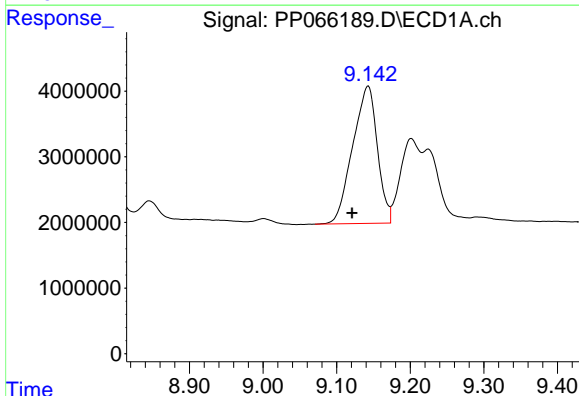
R.T.: 8.785 min  
 Delta R.T.: 0.006 min  
 Response: 75278488  
 Conc: 355.13 ng/ml

Instrument :  
 ECD\_P  
 ClientSampleId :



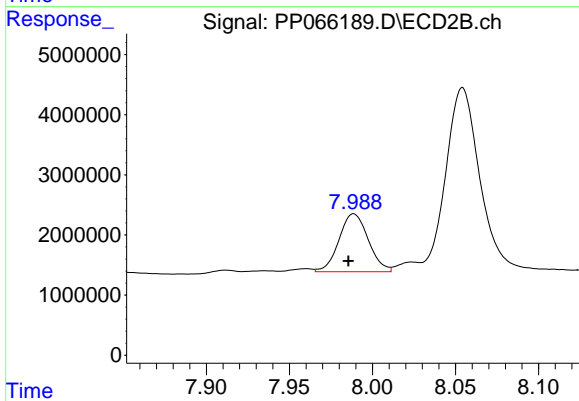
#37 AR-1262-2

R.T.: 7.463 min  
 Delta R.T.: 0.003 min  
 Response: 26077176  
 Conc: 305.19 ng/ml



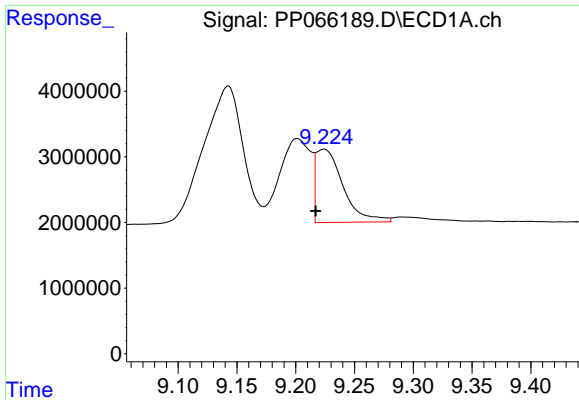
#38 AR-1262-3

R.T.: 9.143 min  
 Delta R.T.: 0.022 min  
 Response: 48749759  
 Conc: 332.42 ng/ml



#38 AR-1262-3

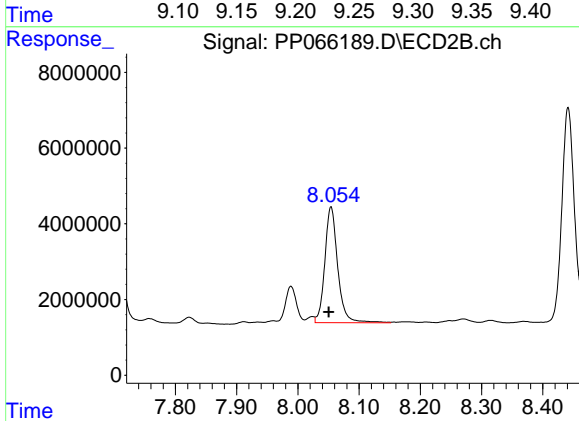
R.T.: 7.989 min  
 Delta R.T.: 0.003 min  
 Response: 11827818  
 Conc: 178.47 ng/ml



#39 AR-1262-4

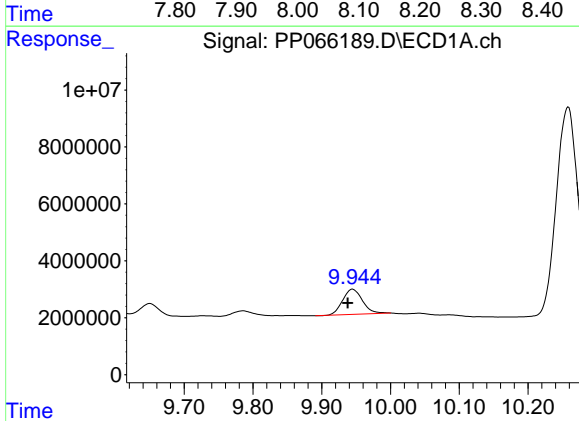
R.T.: 9.224 min  
Delta R.T.: 0.007 min  
Response: 18064723  
Conc: 150.76 ng/ml

Instrument :  
ECD\_P  
ClientSampleId :



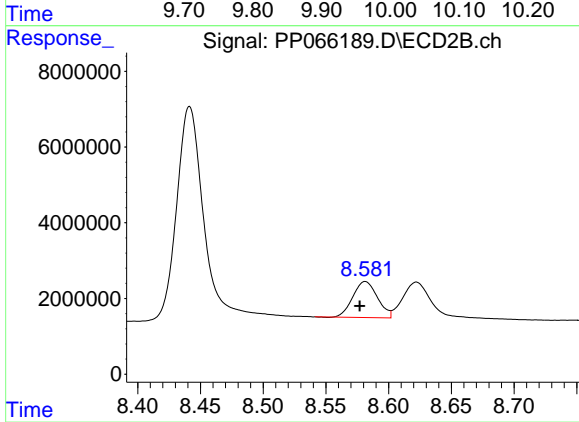
#39 AR-1262-4

R.T.: 8.054 min  
Delta R.T.: 0.004 min  
Response: 44847688  
Conc: 371.49 ng/ml



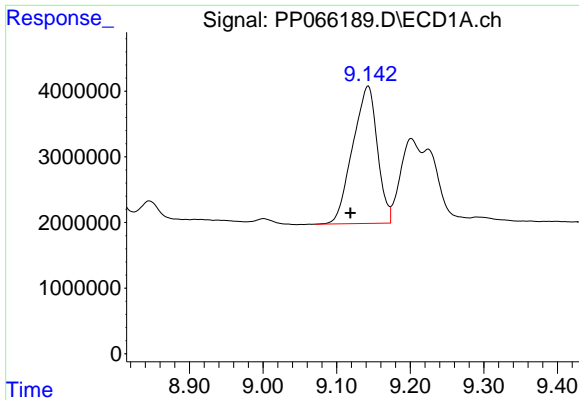
#40 AR-1262-5

R.T.: 9.945 min  
Delta R.T.: 0.007 min  
Response: 17745401  
Conc: 238.30 ng/ml



#40 AR-1262-5

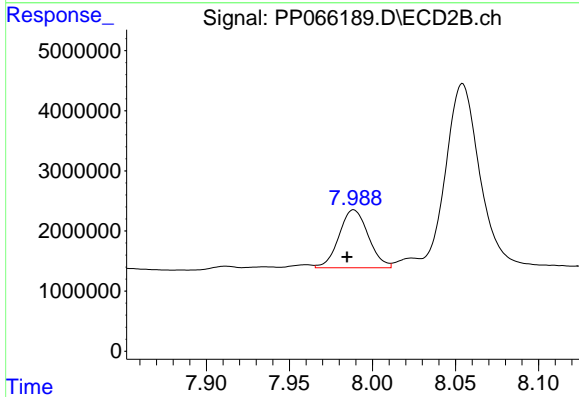
R.T.: 8.581 min  
Delta R.T.: 0.004 min  
Response: 13039734  
Conc: 236.07 ng/ml



#41 AR-1268-1

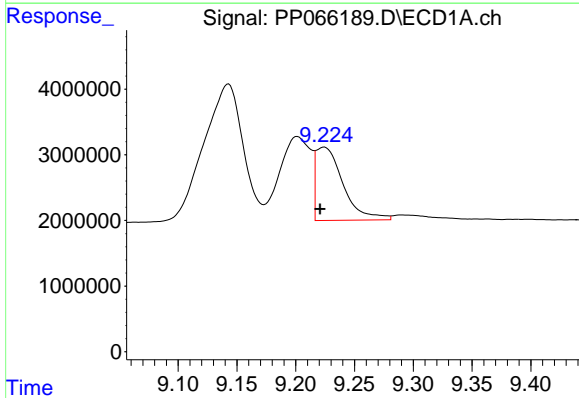
R.T.: 9.143 min  
 Delta R.T.: 0.024 min  
 Response: 48749759  
 Conc: 196.12 ng/ml

Instrument :  
 ECD\_P  
 ClientSampleId :



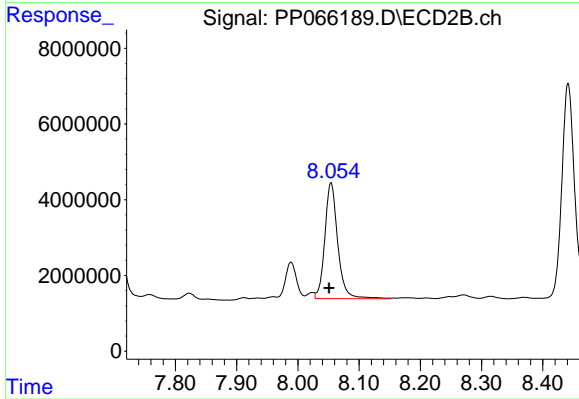
#41 AR-1268-1

R.T.: 7.989 min  
 Delta R.T.: 0.004 min  
 Response: 11827818  
 Conc: 65.21 ng/ml



#42 AR-1268-2

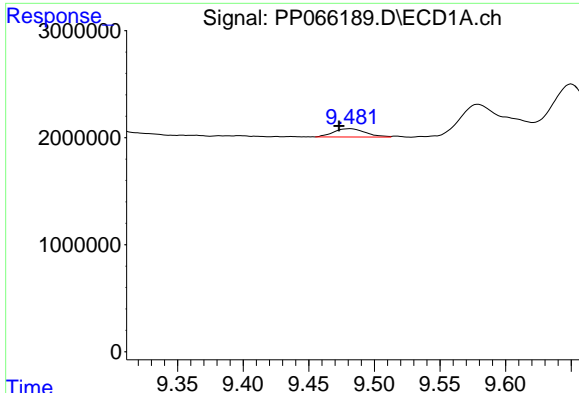
R.T.: 9.224 min  
 Delta R.T.: 0.004 min  
 Response: 18064723  
 Conc: 75.31 ng/ml



#42 AR-1268-2

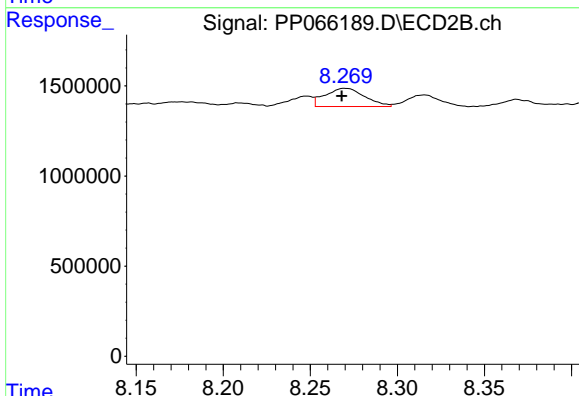
R.T.: 8.054 min  
 Delta R.T.: 0.003 min  
 Response: 44847688  
 Conc: 262.88 ng/ml



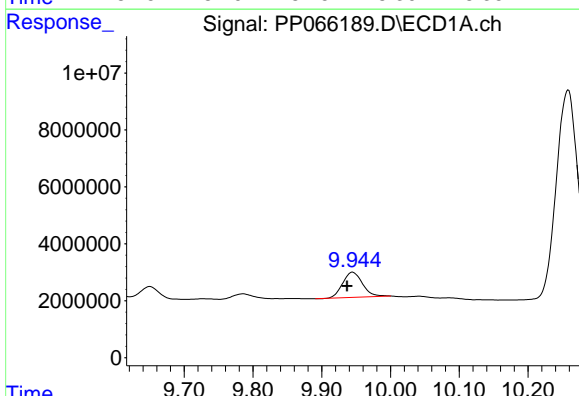


#43 AR-1268-3  
 R.T.: 9.482 min  
 Delta R.T.: 0.009 min  
 Response: 1310926  
 Conc: 6.54 ng/ml

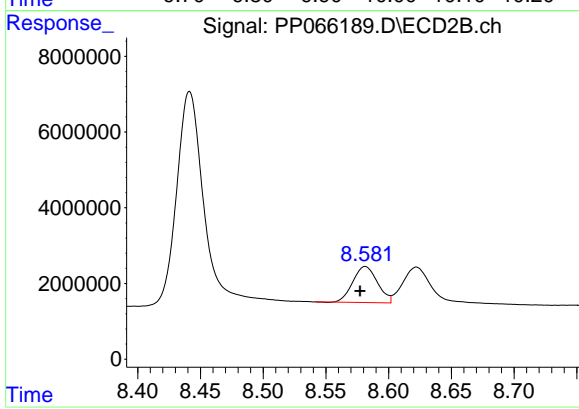
Instrument :  
 ECD\_P  
 ClientSampleId :



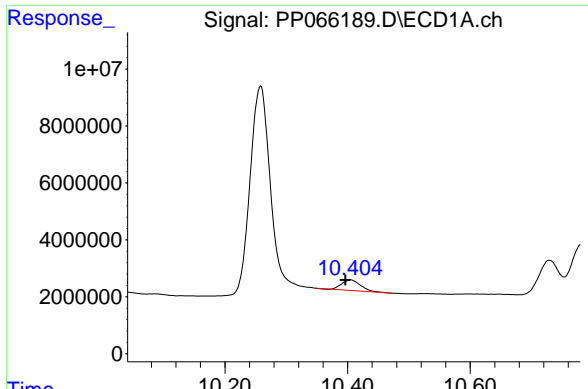
#43 AR-1268-3  
 R.T.: 8.270 min  
 Delta R.T.: 0.002 min  
 Response: 1595342  
 Conc: 11.04 ng/ml



#44 AR-1268-4  
 R.T.: 9.945 min  
 Delta R.T.: 0.008 min  
 Response: 17745401  
 Conc: 232.30 ng/ml



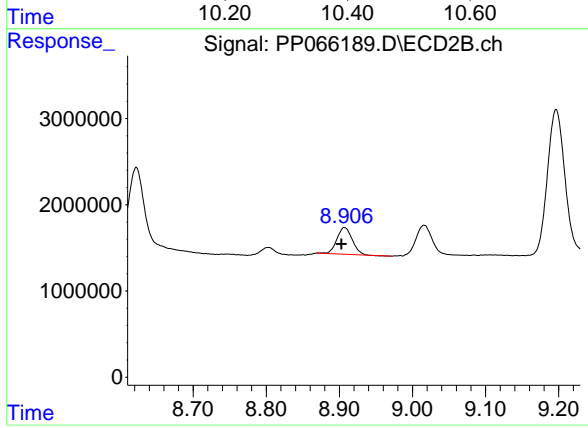
#44 AR-1268-4  
 R.T.: 8.581 min  
 Delta R.T.: 0.004 min  
 Response: 13039734  
 Conc: 213.09 ng/ml



#45 AR-1268-5

R.T.: 10.405 min  
Delta R.T.: 0.008 min  
Response: 8078327  
Conc: 12.49 ng/ml

Instrument :  
ECD\_P  
ClientSampleId :



#45 AR-1268-5

R.T.: 8.907 min  
Delta R.T.: 0.004 min  
Response: 4518368  
Conc: 10.61 ng/ml