

Data Path : Z:\pestpcbsrv\HPCHEM1\ECD_P\Data\PP070621\
 Data File : PP037044.D
 Signal(s) : Signal #1: ECD1A.CH Signal #2: ECD2B.CH
 Acq On : 06 Jul 2021 23:37
 Operator : DD\AJ
 Sample : AR1262ICC250
 Misc :
 ALS Vial : 28 Sample Multiplier: 1

Instrument :
 ECD_P
 ClientSampleId :
 AR1262ICC250

Integration File signal 1: autoint1.e
 Integration File signal 2: autoint2.e
 Quant Time: Jul 07 08:09:01 2021
 Quant Method : Z:\pestpcbsrv\HPCHEM1\ECD_P\methods\PP070621.M
 Quant Title : GC EXTRACTABLES
 QLast Update : Wed Jul 07 08:07:16 2021
 Response via : Initial Calibration
 Integrator: ChemStation 6890 Scale Mode: Small noise peaks clipped

Volume Inj. : 2 µl
 Signal #1 Phase : ZB-MR1 Signal #2 Phase: ZB-MR2
 Signal #1 Info : 30Mx0.32mmx 0.50µ Signal #2 Info : 30M x 0.32mm x 0.25µm

Compound	RT#1	RT#2	Resp#1	Resp#2	ng/ml	ng/ml

System Monitoring Compounds						
1) SA Tetrachlo...	4.959	3.949	1165259	700964	25.608	25.056
2) SA Decachlor...	10.989	9.245	1238020	734782	27.070	26.379
Target Compounds						
36) L8 AR-1262-1	8.597	7.320	759170	267276	271.734	258.222
37) L8 AR-1262-2	9.156	7.874	1348075	889558	267.199	257.151
38) L8 AR-1262-3	9.468	8.161	1005600	364708	272.915	262.347
39) L8 AR-1262-4	9.562	8.226	774174	684310	274.449	259.345
40) L8 AR-1262-5	10.233	8.723	557958	326937	270.538	257.877

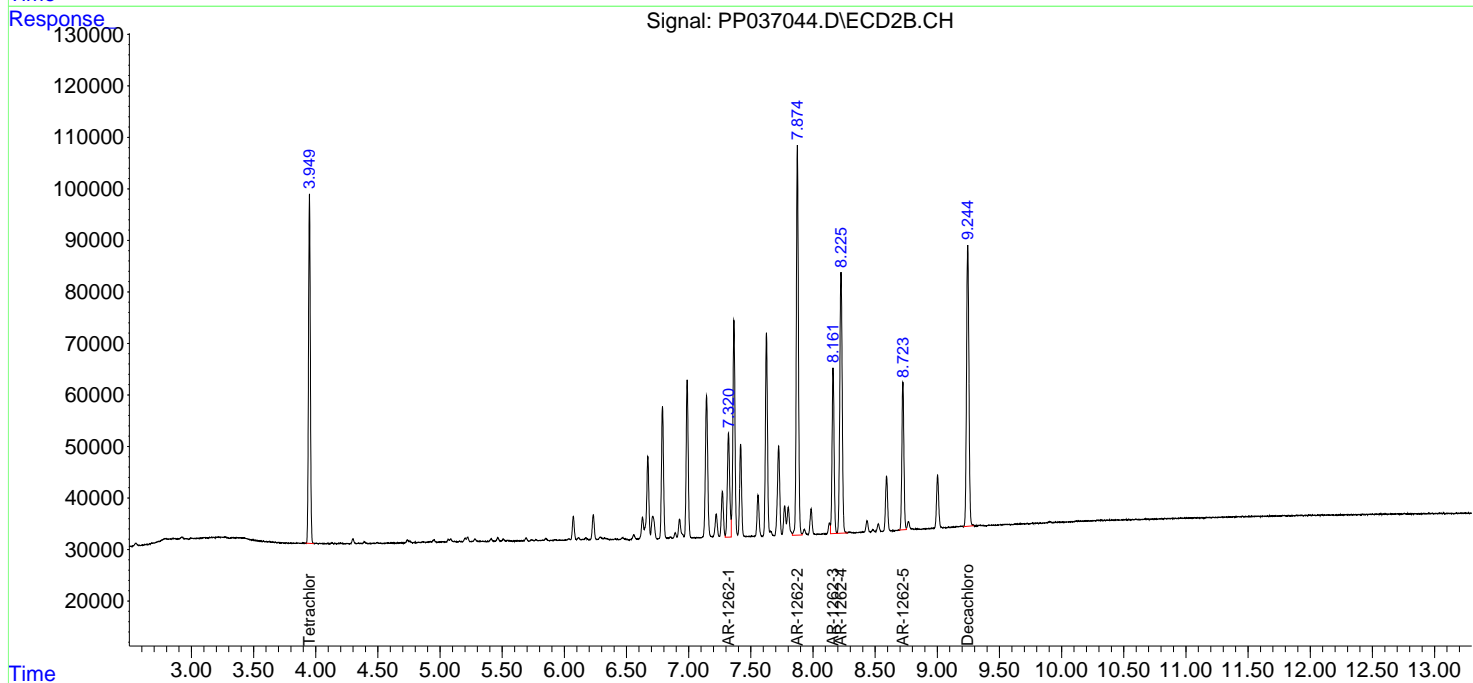
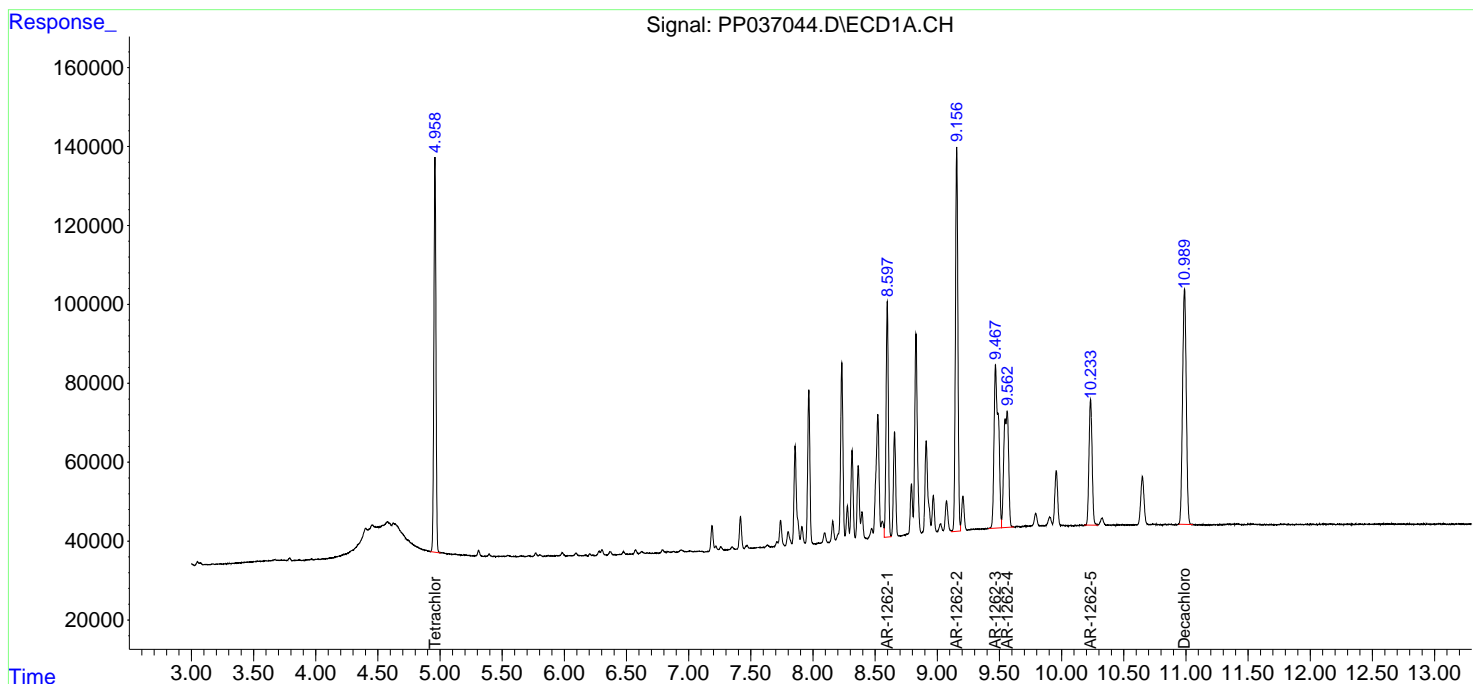
(f)=RT Delta > 1/2 Window (#)=Amounts differ by > 25% (m)=manual int.

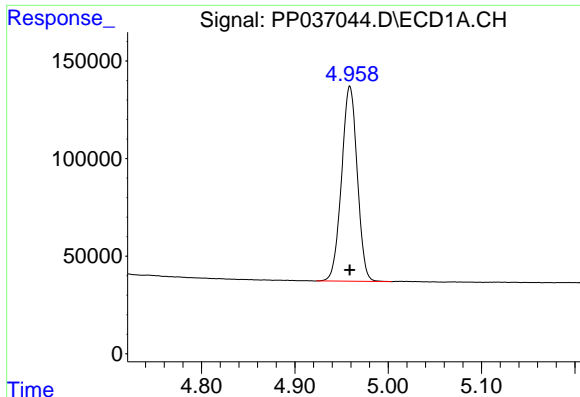
Data Path : Z:\pestpcbsrv\HPCHEM1\ECD_P\Data\PP070621\
 Data File : PP037044.D
 Signal(s) : Signal #1: ECD1A.CH Signal #2: ECD2B.CH
 Acq On : 06 Jul 2021 23:37
 Operator : DD\AJ
 Sample : AR1262ICC250
 Misc :
 ALS Vial : 28 Sample Multiplier: 1

Instrument :
 ECD_P
 ClientSampled :
 AR1262ICC250

Integration File signal 1: autoint1.e
 Integration File signal 2: autoint2.e
 Quant Time: Jul 07 08:09:01 2021
 Quant Method : Z:\pestpcbsrv\HPCHEM1\ECD_P\methods\PP070621.M
 Quant Title : GC EXTRACTABLES
 QLast Update : Wed Jul 07 08:07:16 2021
 Response via : Initial Calibration
 Integrator: ChemStation 6890 Scale Mode: Small noise peaks clipped

Volume Inj. : 2 µl
 Signal #1 Phase : ZB-MR1 Signal #2 Phase: ZB-MR2
 Signal #1 Info : 30Mx0.32mmx 0.50µ Signal #2 Info : 30M x 0.32mm x 0.25µm

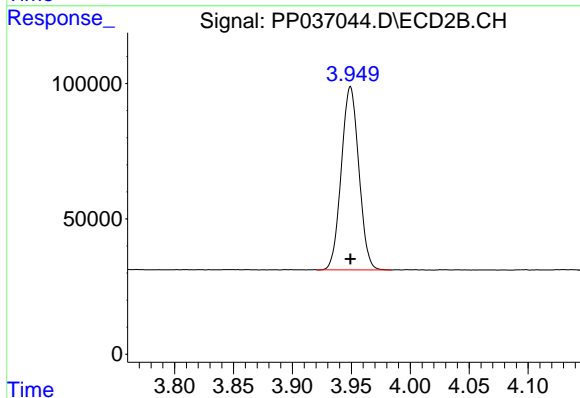




#1 Tetrachloro-m-xylene

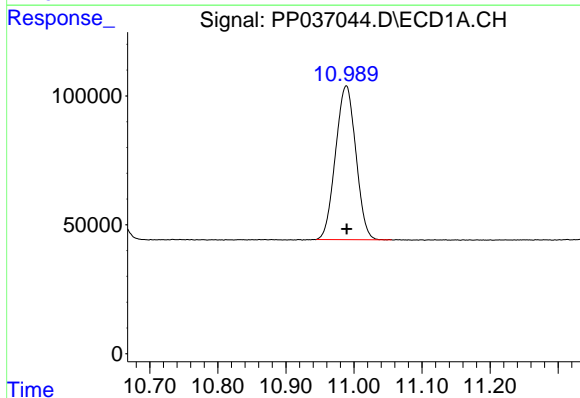
R.T.: 4.959 min
 Delta R.T.: 0.000 min
 Response: 1165259
 Conc: 25.61 ng/ml

Instrument :
 ECD_P
 ClientSampleId :
 AR1262ICC250



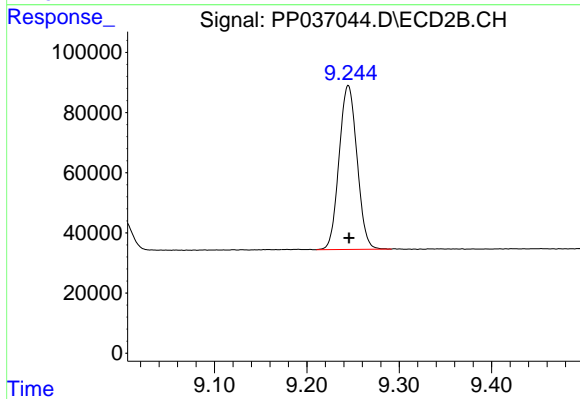
#1 Tetrachloro-m-xylene

R.T.: 3.949 min
 Delta R.T.: 0.000 min
 Response: 700964
 Conc: 25.06 ng/ml



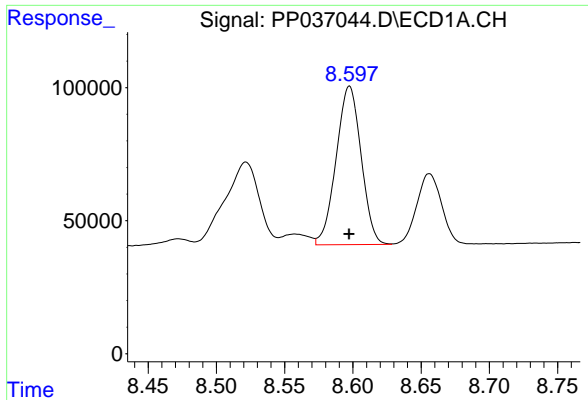
#2 Decachlorobiphenyl

R.T.: 10.989 min
 Delta R.T.: 0.000 min
 Response: 1238020
 Conc: 27.07 ng/ml



#2 Decachlorobiphenyl

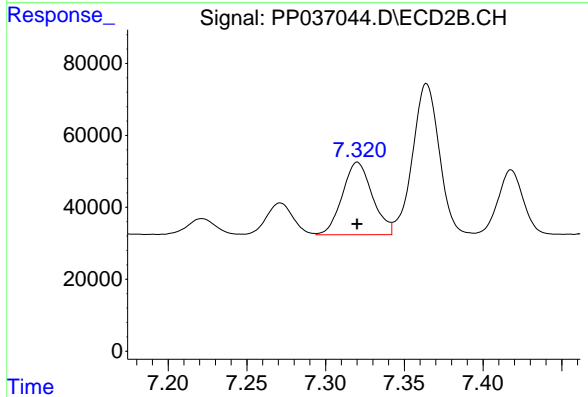
R.T.: 9.245 min
 Delta R.T.: 0.000 min
 Response: 734782
 Conc: 26.38 ng/ml



#36 AR-1262-1

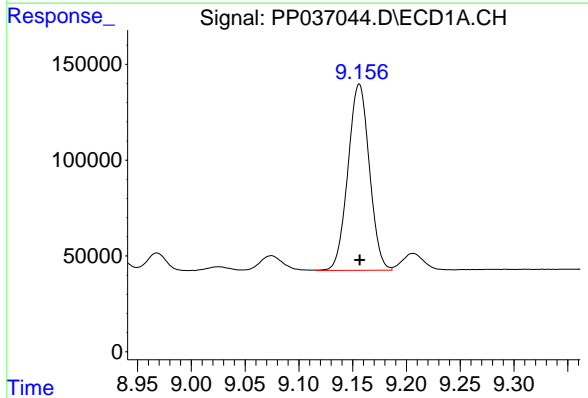
R.T.: 8.597 min
 Delta R.T.: 0.000 min
 Response: 759170
 Conc: 271.73 ng/ml

Instrument :
 ECD_P
 ClientSampleId :
 AR1262ICC250



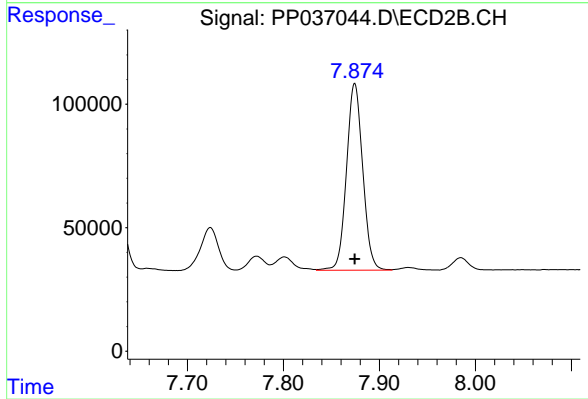
#36 AR-1262-1

R.T.: 7.320 min
 Delta R.T.: 0.000 min
 Response: 267276
 Conc: 258.22 ng/ml



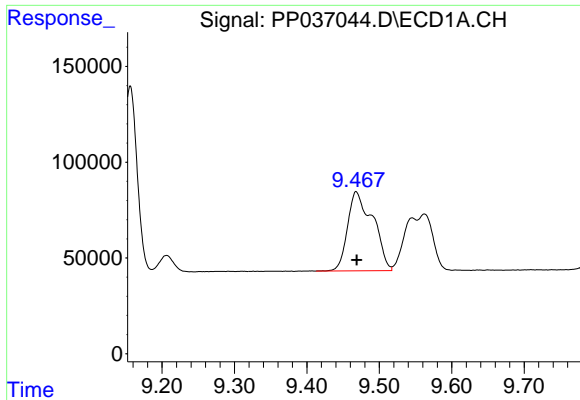
#37 AR-1262-2

R.T.: 9.156 min
 Delta R.T.: 0.000 min
 Response: 1348075
 Conc: 267.20 ng/ml



#37 AR-1262-2

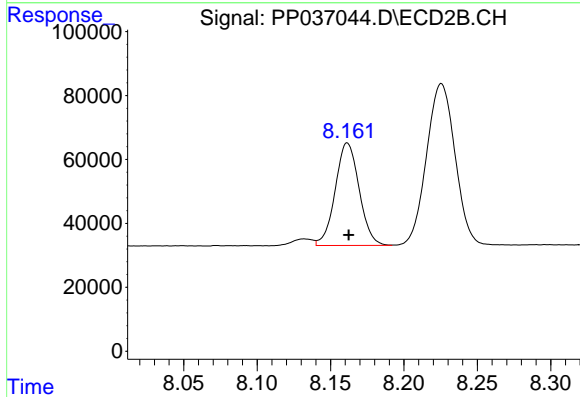
R.T.: 7.874 min
 Delta R.T.: 0.000 min
 Response: 889558
 Conc: 257.15 ng/ml



#38 AR-1262-3

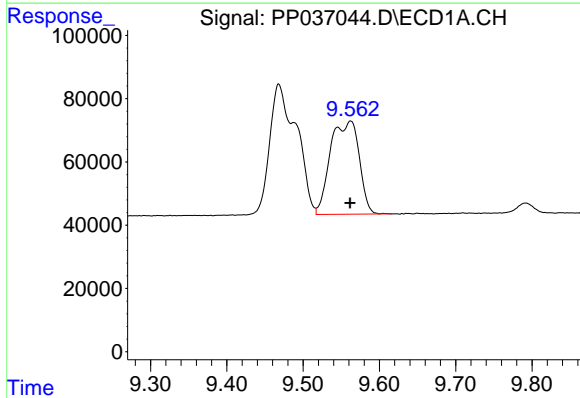
R.T.: 9.468 min
Delta R.T.: 0.000 min
Response: 1005600
Conc: 272.91 ng/ml

Instrument :
ECD_P
ClientSampled :
AR1262ICC250



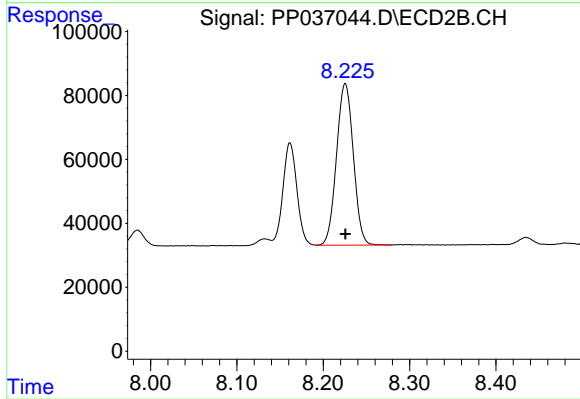
#38 AR-1262-3

R.T.: 8.161 min
Delta R.T.: 0.000 min
Response: 364708
Conc: 262.35 ng/ml



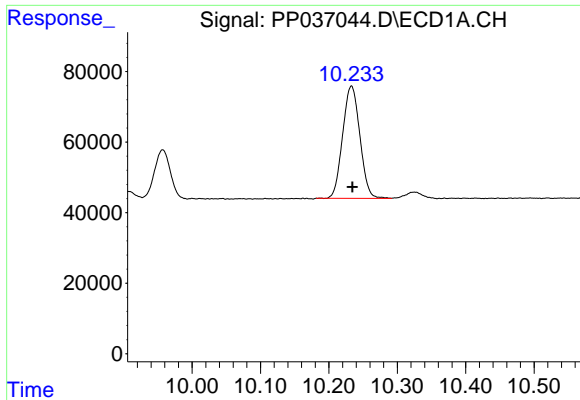
#39 AR-1262-4

R.T.: 9.562 min
Delta R.T.: 0.000 min
Response: 774174
Conc: 274.45 ng/ml



#39 AR-1262-4

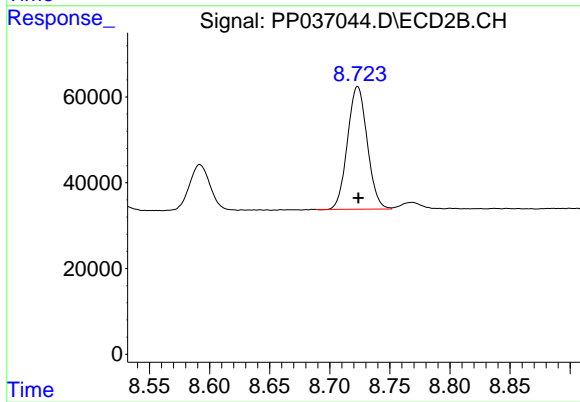
R.T.: 8.226 min
Delta R.T.: 0.000 min
Response: 684310
Conc: 259.35 ng/ml



#40 AR-1262-5

R.T.: 10.233 min
Delta R.T.: -0.001 min
Response: 557958
Conc: 270.54 ng/ml

Instrument :
ECD_P
ClientSampled :
AR1262ICC250



#40 AR-1262-5

R.T.: 8.723 min
Delta R.T.: 0.000 min
Response: 326937
Conc: 257.88 ng/ml