

Data Path : Z:\pestpcbsrv\HPCHEM1\ECD_P\Data\PP070621\
 Data File : PP037052.D
 Signal(s) : Signal #1: ECD1A.CH Signal #2: ECD2B.CH
 Acq On : 07 Jul 2021 1:52
 Operator : DD\AJ
 Sample : AR1242ICV500
 Misc :
 ALS Vial : 36 Sample Multiplier: 1

Instrument :
 ECD_P
 ClientSampleId :
 ICVPP070621AR1242

Integration File signal 1: autoint1.e
 Integration File signal 2: autoint2.e
 Quant Time: Jul 07 08:36:45 2021
 Quant Method : Z:\pestpcbsrv\HPCHEM1\ECD_P\methods\PP070621.M
 Quant Title : GC EXTRACTABLES
 QLast Update : Wed Jul 07 08:32:32 2021
 Response via : Initial Calibration
 Integrator: ChemStation 6890 Scale Mode: Small noise peaks clipped

Volume Inj. : 2 µl
 Signal #1 Phase : ZB-MR1 Signal #2 Phase: ZB-MR2
 Signal #1 Info : 30Mx0.32mmx 0.50µ Signal #2 Info : 30M x 0.32mm x 0.25µm

Compound	RT#1	RT#2	Resp#1	Resp#2	ng/ml	ng/ml

System Monitoring Compounds						
1) SA Tetrachlo...	4.959	3.949	2352480	1441447	51.760	52.676
2) SA Decachlor...	10.989	9.245	2322738	1416421	50.455	50.887
Target Compounds						
16) L4 AR-1242-1	6.278	5.201	661504	390895	518.954	518.636
17) L4 AR-1242-2	6.303	5.220	938049	545267	517.368	529.915
18) L4 AR-1242-3	6.368	5.411	607200	301567	527.924	529.607
19) L4 AR-1242-4	6.476	5.508	507584	280546	530.223	544.352
20) L4 AR-1242-5	7.258	6.071	544291	360468	523.376	529.572

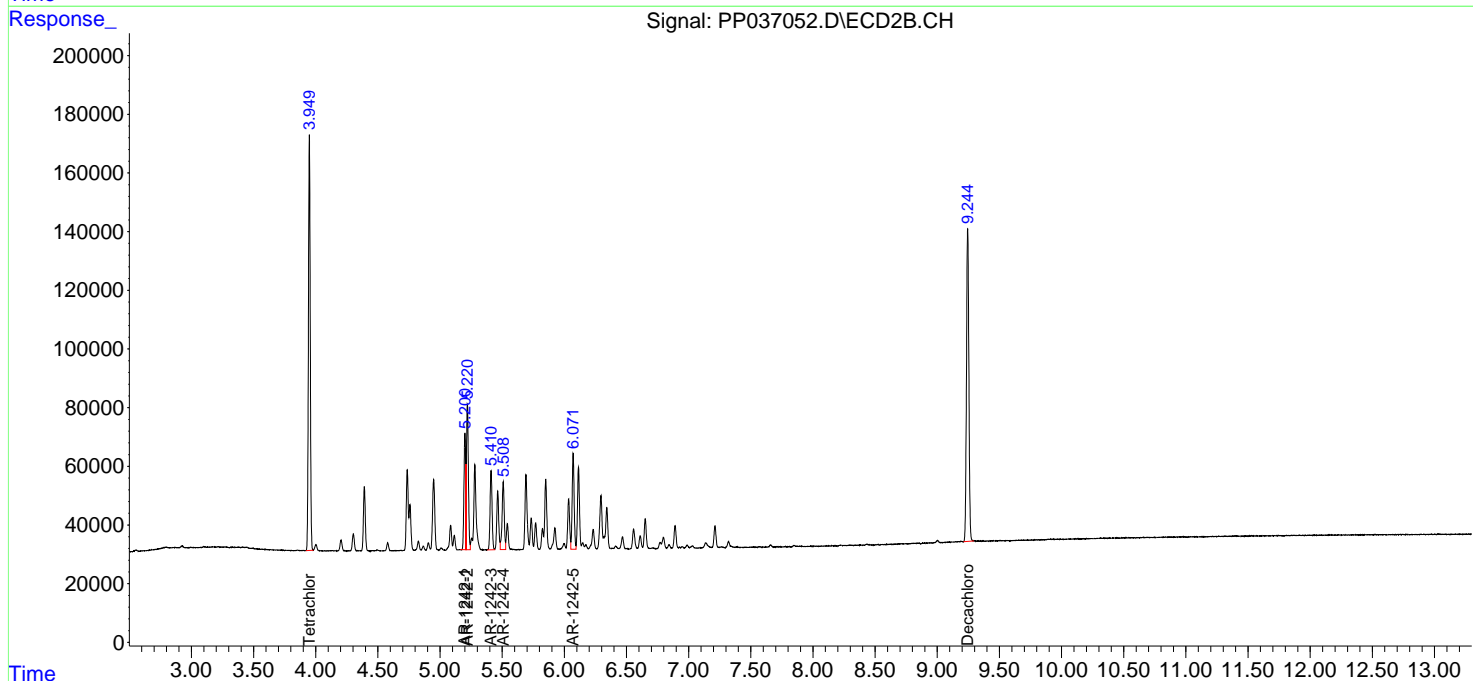
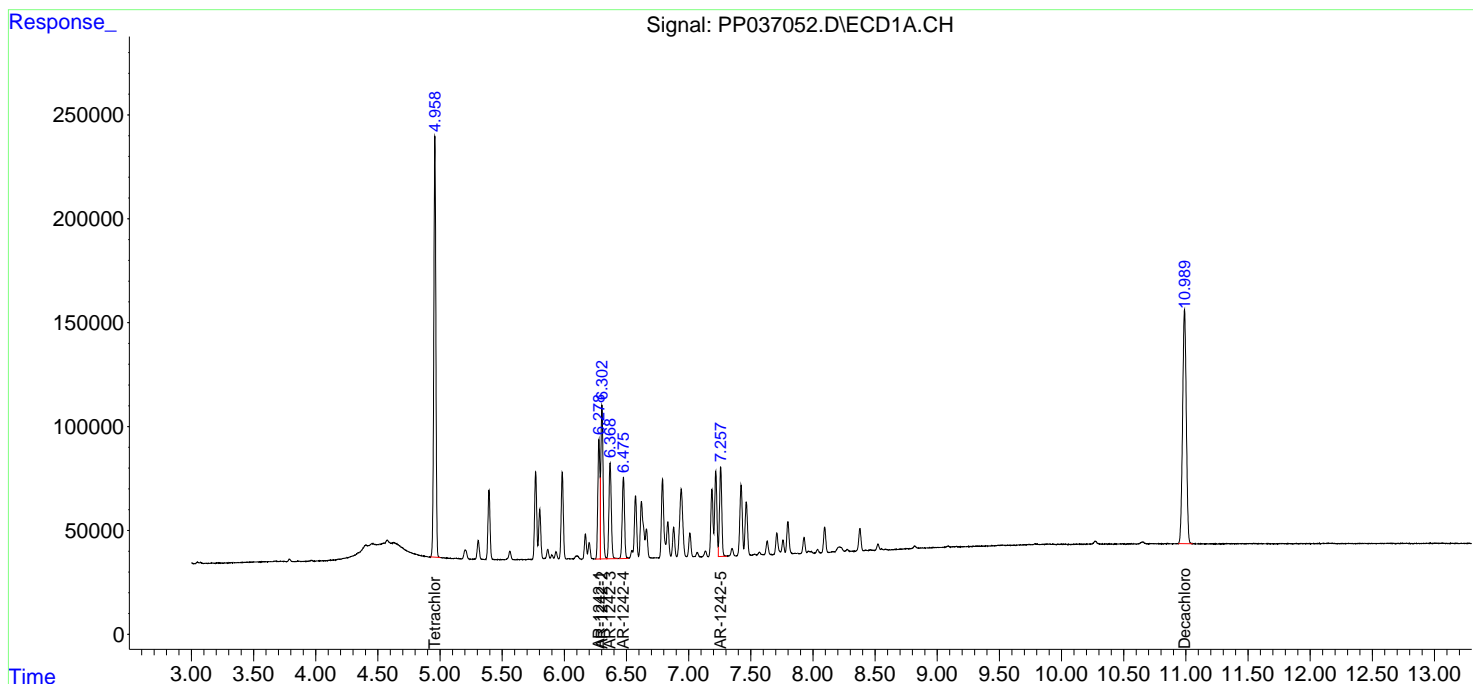
(f)=RT Delta > 1/2 Window (#)=Amounts differ by > 25% (m)=manual int.

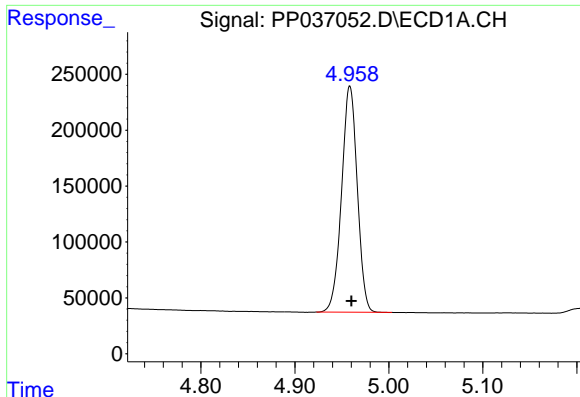
Data Path : Z:\pestpcbsrv\HPCHEM1\ECD_P\Data\PP070621\
 Data File : PP037052.D
 Signal(s) : Signal #1: ECD1A.CH Signal #2: ECD2B.CH
 Acq On : 07 Jul 2021 1:52
 Operator : DD\AJ
 Sample : AR1242ICV500
 Misc :
 ALS Vial : 36 Sample Multiplier: 1

Instrument :
 ECD_P
 ClientSampleId :
 ICVPP070621AR1242

Integration File signal 1: autoint1.e
 Integration File signal 2: autoint2.e
 Quant Time: Jul 07 08:36:45 2021
 Quant Method : Z:\pestpcbsrv\HPCHEM1\ECD_P\methods\PP070621.M
 Quant Title : GC EXTRACTABLES
 QLast Update : Wed Jul 07 08:32:32 2021
 Response via : Initial Calibration
 Integrator: ChemStation 6890 Scale Mode: Small noise peaks clipped

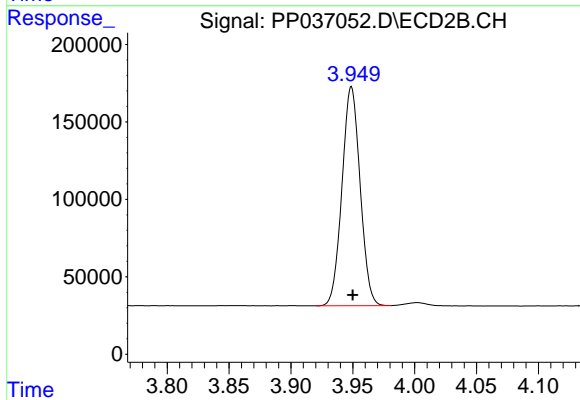
Volume Inj. : 2 µl
 Signal #1 Phase : ZB-MR1 Signal #2 Phase: ZB-MR2
 Signal #1 Info : 30Mx0.32mmx 0.50µ Signal #2 Info : 30M x 0.32mm x 0.25µm



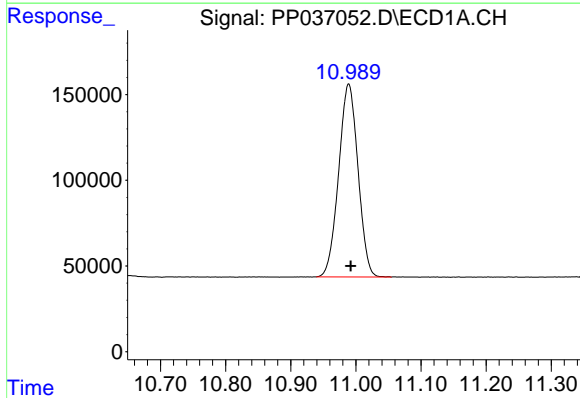


#1 Tetrachloro-m-xylene
 R.T.: 4.959 min
 Delta R.T.: -0.001 min
 Response: 2352480
 Conc: 51.76 ng/ml

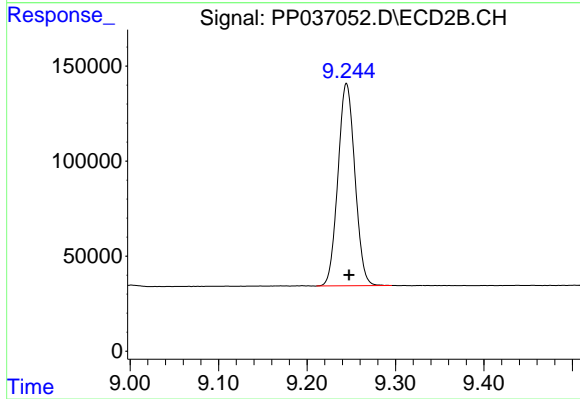
Instrument :
 ECD_P
 ClientSampleId :
 ICVPP070621AR1242



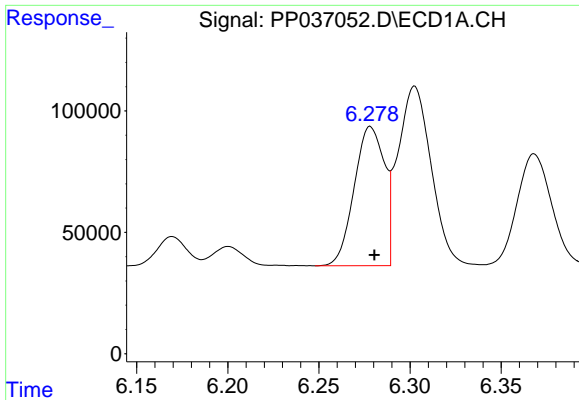
#1 Tetrachloro-m-xylene
 R.T.: 3.949 min
 Delta R.T.: 0.000 min
 Response: 1441447
 Conc: 52.68 ng/ml



#2 Decachlorobiphenyl
 R.T.: 10.989 min
 Delta R.T.: -0.003 min
 Response: 2322738
 Conc: 50.46 ng/ml



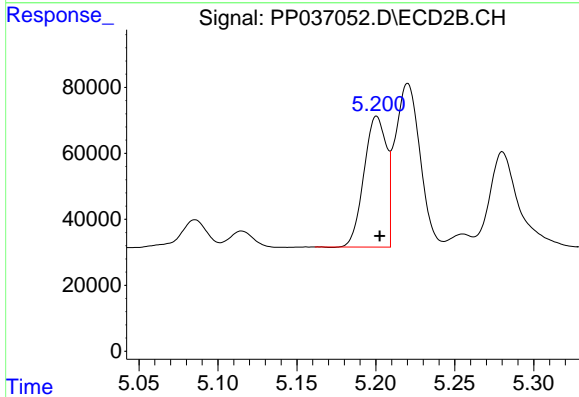
#2 Decachlorobiphenyl
 R.T.: 9.245 min
 Delta R.T.: -0.003 min
 Response: 1416421
 Conc: 50.89 ng/ml



#16 AR-1242-1

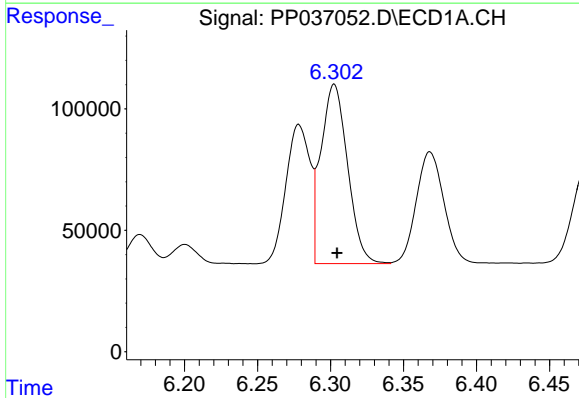
R.T.: 6.278 min
 Delta R.T.: -0.002 min
 Response: 661504
 Conc: 518.95 ng/ml

Instrument :
 ECD_P
 ClientSampleId :
 ICVPP070621AR1242



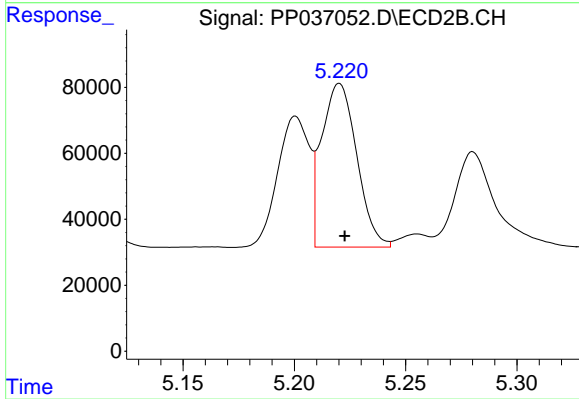
#16 AR-1242-1

R.T.: 5.201 min
 Delta R.T.: -0.002 min
 Response: 390895
 Conc: 518.64 ng/ml



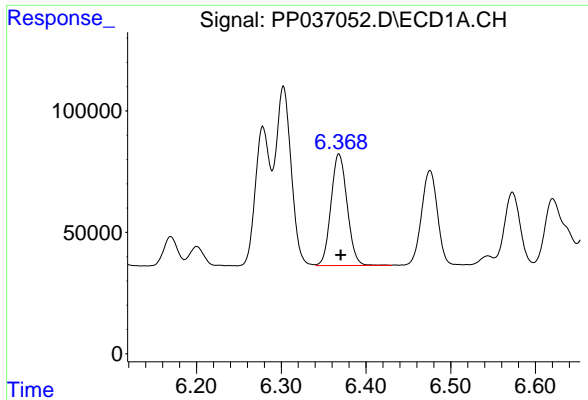
#17 AR-1242-2

R.T.: 6.303 min
 Delta R.T.: -0.002 min
 Response: 938049
 Conc: 517.37 ng/ml



#17 AR-1242-2

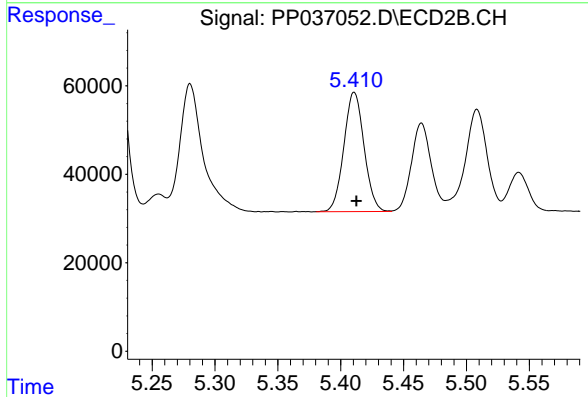
R.T.: 5.220 min
 Delta R.T.: -0.002 min
 Response: 545267
 Conc: 529.91 ng/ml



#18 AR-1242-3

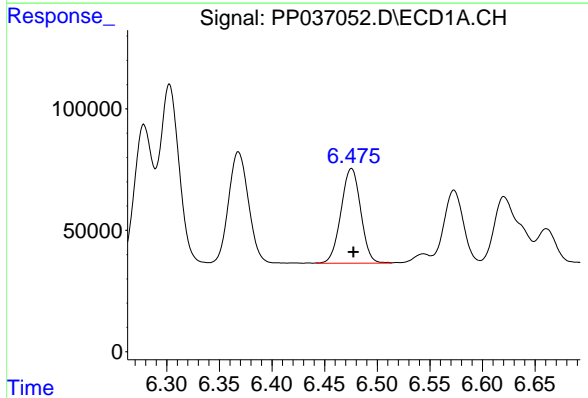
R.T.: 6.368 min
 Delta R.T.: -0.002 min
 Response: 607200
 Conc: 527.92 ng/ml

Instrument :
 ECD_P
 ClientSampleId :
 ICVPP070621AR1242



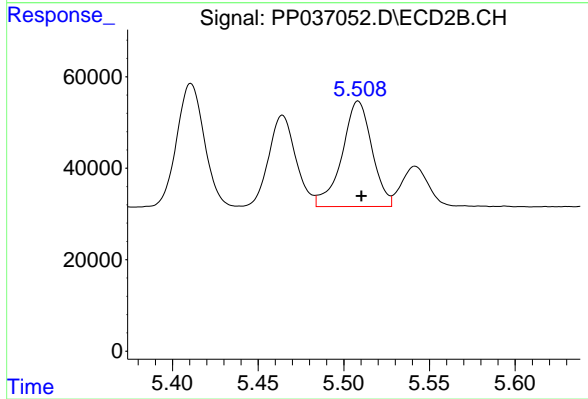
#18 AR-1242-3

R.T.: 5.411 min
 Delta R.T.: -0.002 min
 Response: 301567
 Conc: 529.61 ng/ml



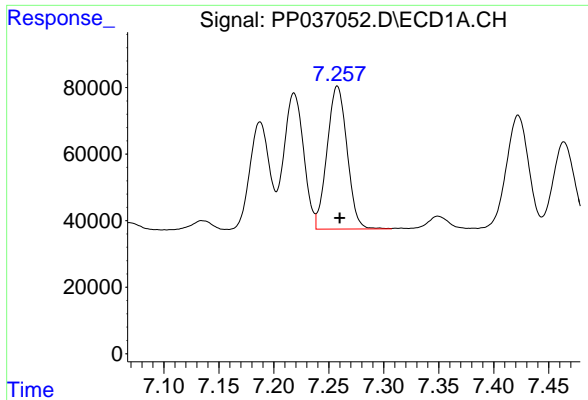
#19 AR-1242-4

R.T.: 6.476 min
 Delta R.T.: -0.002 min
 Response: 507584
 Conc: 530.22 ng/ml



#19 AR-1242-4

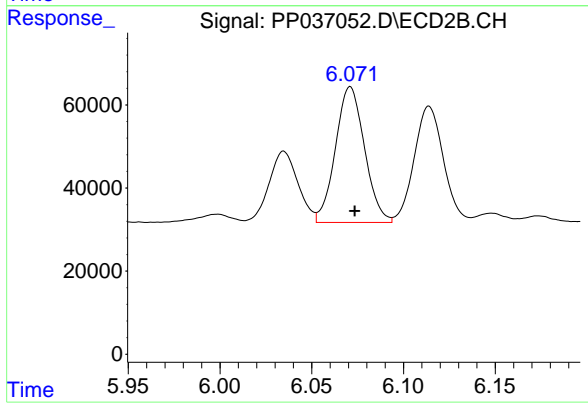
R.T.: 5.508 min
 Delta R.T.: -0.002 min
 Response: 280546
 Conc: 544.35 ng/ml



#20 AR-1242-5

R.T.: 7.258 min
Delta R.T.: -0.002 min
Response: 544291
Conc: 523.38 ng/ml

Instrument :
ECD_P
ClientSampleId :
ICVPP070621AR1242



#20 AR-1242-5

R.T.: 6.071 min
Delta R.T.: -0.002 min
Response: 360468
Conc: 529.57 ng/ml