

Data Path : Z:\pestpcbsrv\HPCHEM1\ECD_P\Data\PP070622\
 Data File : PP049239.D
 Signal(s) : Signal #1: ECD1A.ch Signal #2: ECD2B.ch
 Acq On : 06 Jul 2022 22:59
 Operator : YP\AJ
 Sample : N3588-08 10X
 Misc :
 ALS Vial : 26 Sample Multiplier: 1

Instrument :
 ECD_P
 ClientSampleId :
 BC226482-1-2

Integration File signal 1: autoint1.e
 Integration File signal 2: autoint2.e
 Quant Time: Jul 07 03:20:36 2022
 Quant Method : Z:\pestpcbsrv\HPCHEM1\ECD_P\methods\PP062822.M
 Quant Title : GC EXTRACTABLES
 QLast Update : Wed Jun 29 09:37:18 2022
 Response via : Initial Calibration
 Integrator: ChemStation

Volume Inj. : 2 µl
 Signal #1 Phase : ZB-MR1 Signal #2 Phase: ZB-MR2
 Signal #1 Info : 30Mx0.32mmx 0.50µ Signal #2 Info : 30M x 0.32mm x 0.25µm

Compound	RT#1	RT#2	Resp#1	Resp#2	ng/ml	ng/ml

System Monitoring Compounds						
1) SA Tetrachlo...	4.345	3.596	2594579	4602312	1.825	1.797
2) SA Decachlor...	10.093	8.566	2562174	2273441	2.089	2.017m

Target Compounds

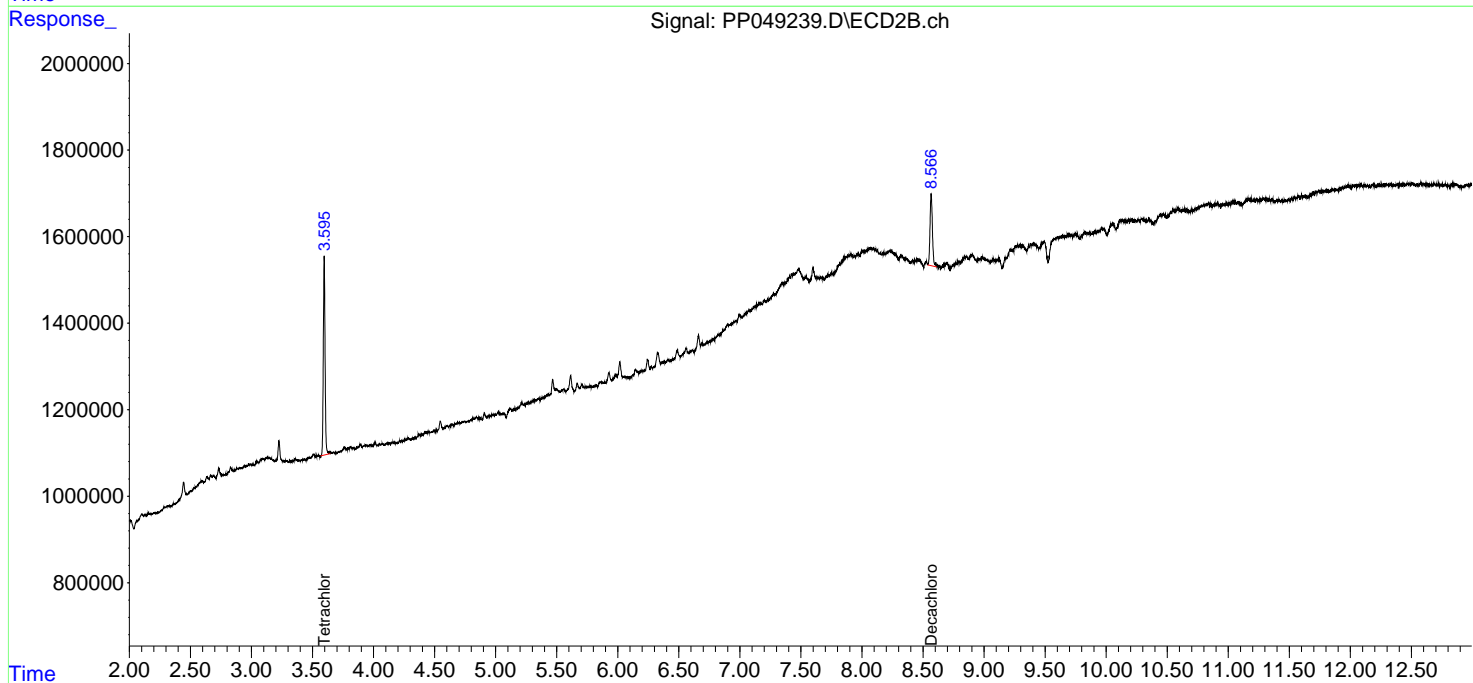
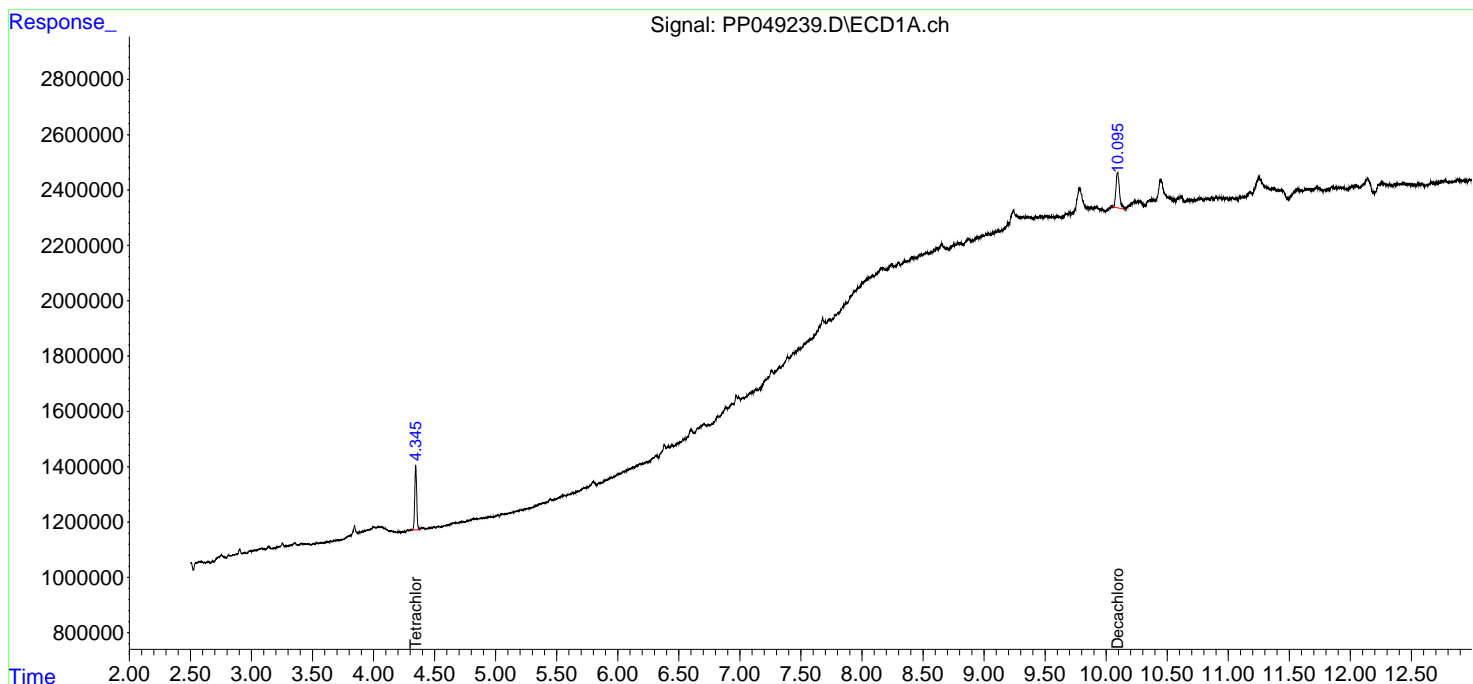
(f)=RT Delta > 1/2 Window (#)=Amounts differ by > 25% (m)=manual int.

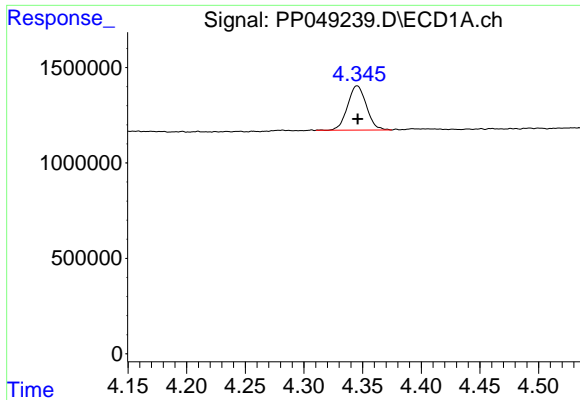
Data Path : Z:\pestpcbsrv\HPCHEM1\ECD_P\Data\PP070622\
Data File : PP049239.D
Signal(s) : Signal #1: ECD1A.ch Signal #2: ECD2B.ch
Acq On : 06 Jul 2022 22:59
Operator : YP\AJ
Sample : N3588-08 10X
Misc :
ALS Vial : 26 Sample Multiplier: 1

Instrument :
ECD_P
ClientSampleId :
BC226482-1-2

Integration File signal 1: autoint1.e
Integration File signal 2: autoint2.e
Quant Time: Jul 07 03:20:36 2022
Quant Method : Z:\pestpcbsrv\HPCHEM1\ECD_P\methods\PP062822.M
Quant Title : GC EXTRACTABLES
QLast Update : Wed Jun 29 09:37:18 2022
Response via : Initial Calibration
Integrator: ChemStation

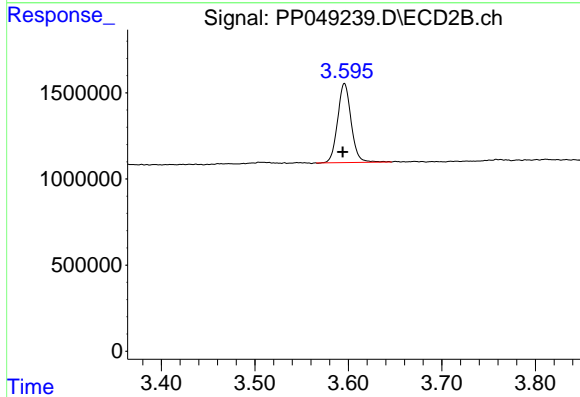
Volume Inj. : 2 µl
Signal #1 Phase : ZB-MR1 Signal #2 Phase: ZB-MR2
Signal #1 Info : 30Mx0.32mmx 0.50µ Signal #2 Info : 30M x 0.32mm x 0.25µm



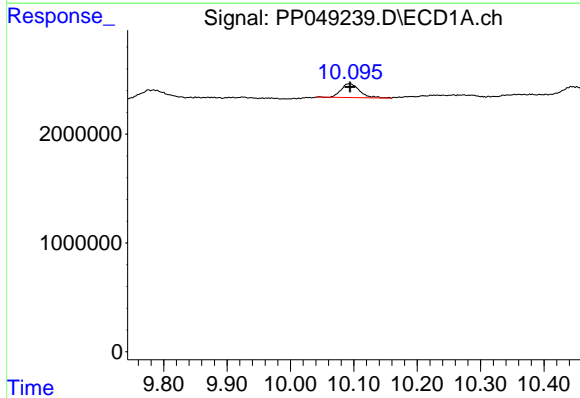


#1 Tetrachloro-m-xylene
 R.T.: 4.345 min
 Delta R.T.: 0.000 min
 Response: 2594579
 Conc: 1.83 ng/ml

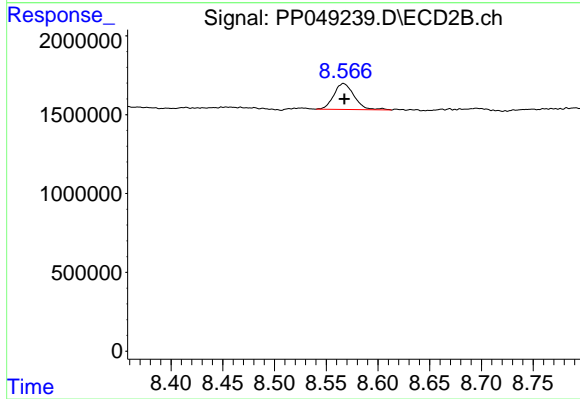
Instrument :
 ECD_P
 ClientSampleId :
 BC226482-1-2



#1 Tetrachloro-m-xylene
 R.T.: 3.596 min
 Delta R.T.: 0.002 min
 Response: 4602312
 Conc: 1.80 ng/ml



#2 Decachlorobiphenyl
 R.T.: 10.093 min
 Delta R.T.: -0.001 min
 Response: 2562174
 Conc: 2.09 ng/ml



#2 Decachlorobiphenyl
 R.T.: 8.566 min
 Delta R.T.: -0.001 min
 Response: 2273441
 Conc: 2.02 ng/ml m